

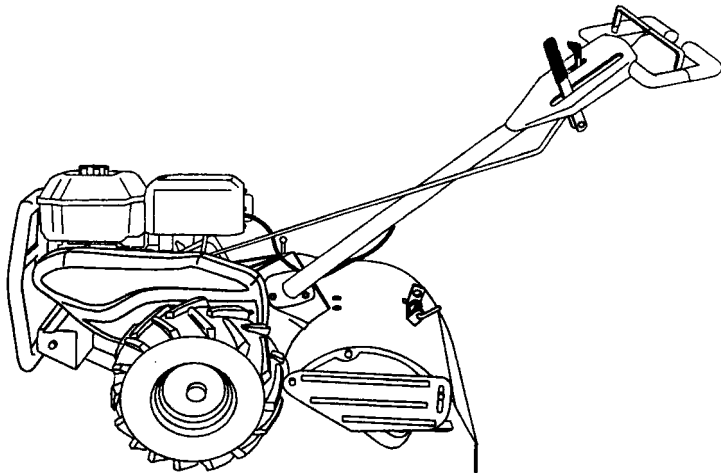
Owner's Manual

**CRAFTSMAN®**

**6.0 HP  
17 INCH TINE WIDTH  
REAR TINE WITH  
COUNTER ROTATING TINES  
TILLER**

Model No.  
**917.293310**

- Safety
- Assembly
- Operation
- Maintenance
- Español
- Repair Parts



This product has a low emission engine which operates differently from previously built engines. Before you start the engine, read and understand this Owner's Manual.

**CAUTION:**

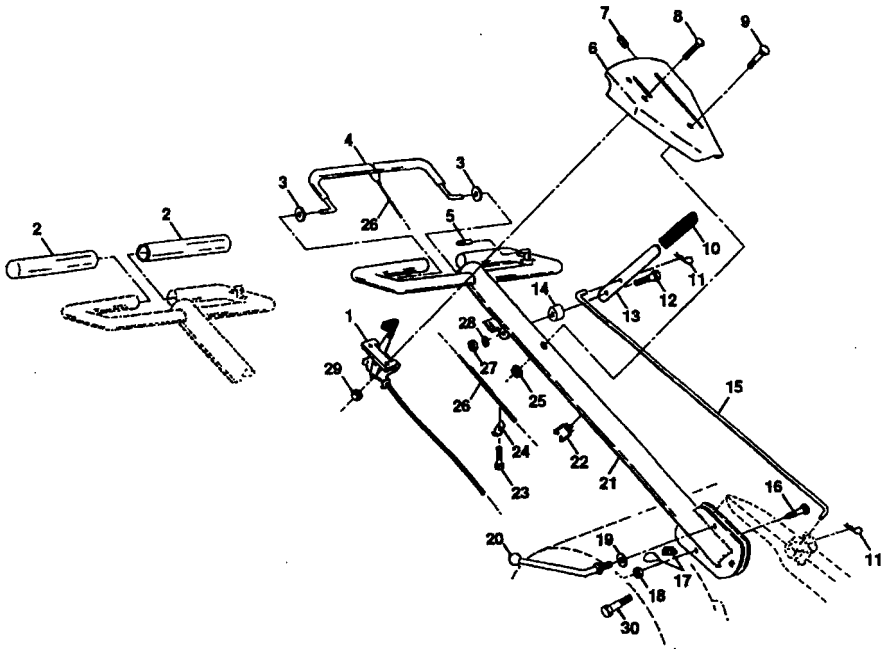
Read and follow all  
Safety Rules and Instructions  
before operating this equipment

Sears, Roebuck and Co., Hoffman Estates, IL 60179

# REPAIR PARTS

## TILLER - - MODEL NUMBER 917.293310

### HANDLES



#### KEY PART NO. NO.

NO.	NO.	DESCRIPTION
1	164743	Throttle, Control
2	141406	Grip, Handle
3	110673X	Grommet, Handle
4	127254X	Bar, Drive Control Assembly
5	6712J	Cap, Vinyl
6	137119	Panel, Control
7	110641X	Bushing, Split
8	71191008	*Screw, Pan Head #10-24
9	72010520	*Bolt, 5/16-18 x 2-1/2
10	110646X	Handle, Grip
11	STD624003	*Clip, Hairpin
12	81328	Bolt, Shoulder
13	110741X	Handle, Shift
14	109313X	Grommet, Rubber
15	110702X	Rod, Shift
16	STD533710	*Bolt, Carriage 3/8-16 x 1 Gr. 5
17	109229X	Lock, Handle

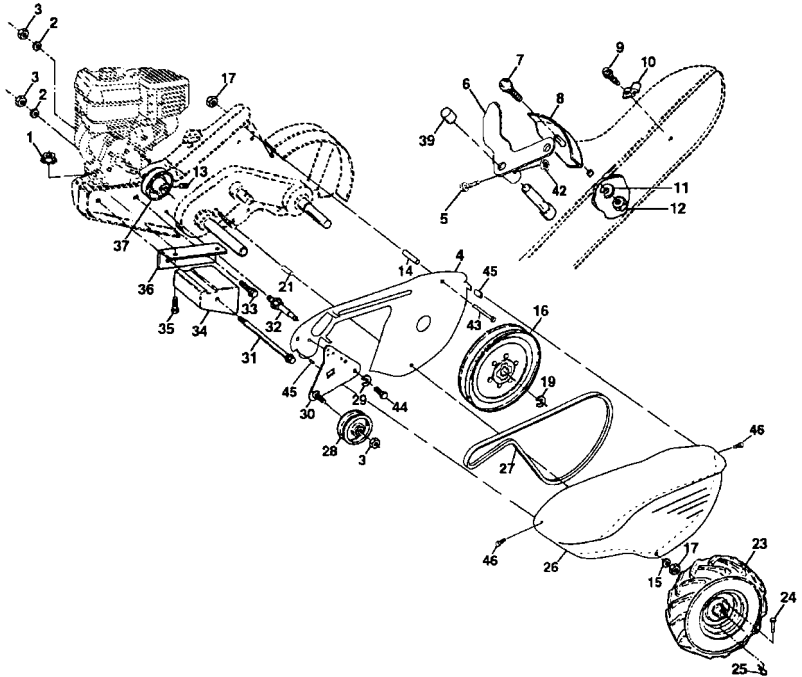
#### KEY PART NO. NO.

NO.	NO.	DESCRIPTION
18	STD541437	*Nut, Centerlock 3/8-16
19	19131611	Washer 13/32 x 1 x 11 Ga.
20	109228X	Lever, Lock, Handle
21	150258	Handle, Assemble
22	165197	Clip, Plastic, Cable
23	86777	Screw, Hex, Washer Hd, Slotte #10-24 x 1/2
24	9484R	Clip
25	73970500	Locknut, Hex, Flange
26	110675X	Clutch, Cable
27	STD541025	*Nut, Hex 1/4-20
28	STD551125	*Washer, Lock 1/4
29	STD541462	*Nut, Keps #10-24
31	150696	Bolt, Pivot

\* STANDARD HARDWARE - - PURCHASE LOCALLY  
NOTE: All component dimensions given in U.S. inches  
1 inch = 25.4 mm

# TILLER - - MODEL NUMBER 917.293310

## MAINFRAME, LEFT SIDE



### KEY PART

NO.	NO.	DESCRIPTION
1	STD541431	Nut, Keps 5/16-18
2	STD551137	*Washer, Lock 3/8
3	STD541037	*Nut, Hex 3/8-16
4	165710	Shield, Inner Belt Guard
5	154734	Screw Shift Lever
6	110111X	Lever, Shift
7	STD532505	*Bolt, Carriage 1/4-20 x 1/2 Gr. 5
8	8700J	Plate, Shift Indicator
9	86777	Screw, Hex, Washer Head, Slotted #10-24 x 1/2
10	9484R	Clip
11	STD551125	*Washer, Lock 1/4
12	STD541025	*Nut, Hex 1/4-20
13	23230506	*Screw, Set, 5/16-18 x 3/8
14	110652X	Spacer, Split .327 x .42 x 2.09
15	STD551031	*Washer 11/32 x 11/16 x 16 Ga.
16	145102	Sheave, Transmission
17	STD541031	*Nut, Hex 5/16-18
19	12000028	Ring, Retainer
21	156117	Spacer, Split .327 x .42 x 1.220
23	5015J	Tire
	128952	Rim
	795R	Tire Valve

### KEY PART

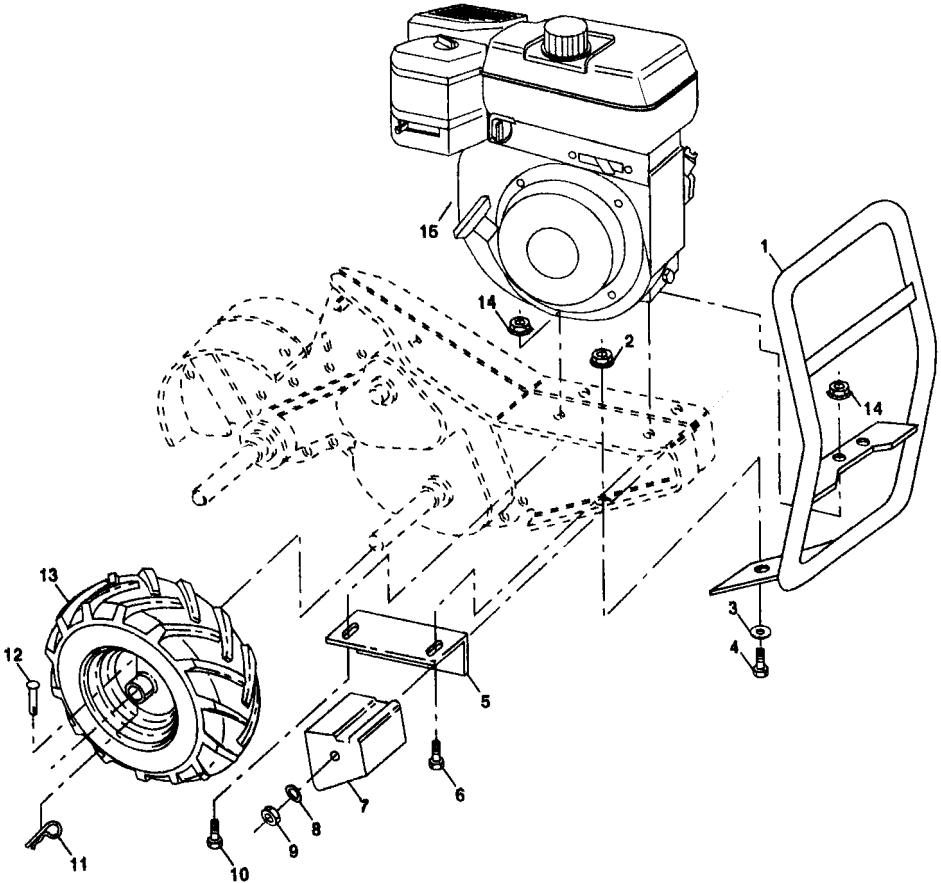
NO.	NO.	DESCRIPTION
24	126875X	Rivet, Drilled
25	STD624003	*Clip, Hairpin
26	165501X558	Guard, Belt
27	132801	Belt, V
28	104679X	Pulley, Idler
29	12000032	Ring, Klip
30	159229	Bracket, Idler
31	102384X	Bolt, Hex 5/16-16 x 12
32	102141X	Shaft, Idler Arm
33	STD523710	*Bolt, Hex 3/8-16 x 1
34	102383X	Counterweight, L.H.
35	STD523120	Bolt, Hex 5/16-18 x 1 1/2
36	102331X	Bracket, Reinforcement, L.H.
37	130812	Sheave, Engine
39	140062	Cap, Plunger
42	69180	Nut Lock #10-24
43	74760544	Bolt, Fin Hex 5/16-18 x 2-3/4
44	74770508	Belt, Fin Hex 5/16-24 x 1/2
45	165504	Nut, J Clip #8
46	165503	Screw Hex Wsh. Hd #8-18 x 1/2

\*STANDARD HARDWARE - - PURCHASE LOCALLY

NOTE: All component dimensions given in U.S. inches.  
1 inch = 25.4 mm

# TILLER - - MODEL NUMBER 917.293310

## MAINFRAME, RIGHT SIDE



### KEY PART

NO.	NO.	DESCRIPTION
1	166532	Bumper
2	73970500	Locknut, Hex, Flange 5/16-18
3	STD551031	*Washer 11/32 x 11/16 x 16Ga.
4	STD523107	Bolt, Hex 5/16-18 x 3/4
5	102332X	Bracket, Reinforcement
6	STD523120	Bolt, Hex 5/16-18 x 2
7	102173X	Counter Weight, R.H.
8	STD551137	*Washer, Lock 3/8
9	STD541037	*Nut, Hex 3/8-16
10	74760524	Bolt, Hex 5/16-18 x 1-1/2

### KEY PART

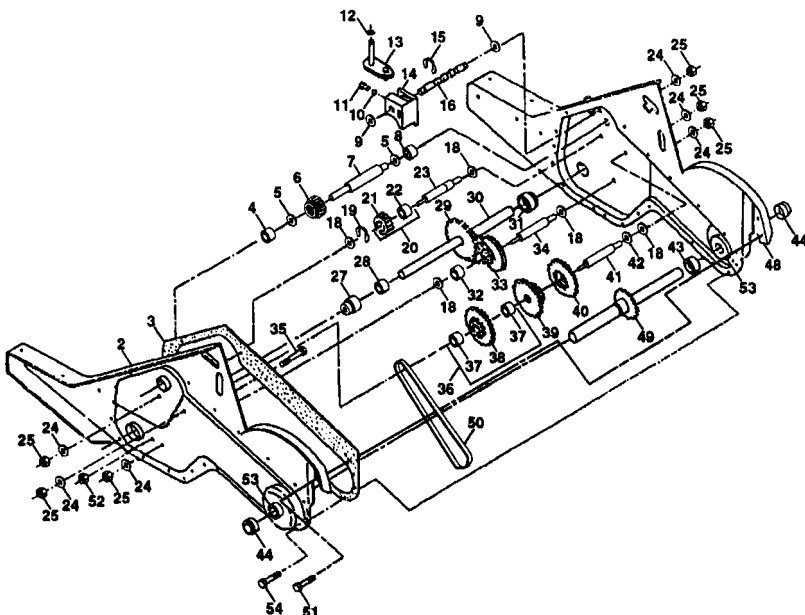
NO.	NO.	DESCRIPTION
11	STD624003	*Clip, Hairpin
12	126875X	Rivet, Drilled
13	5015J	Tire
	128952	Rim
	795R	Tire Valve
14	STD541431	*Nut, Keps 5/16-18
15	-----	Engine, (See Breakdown) Craftsman Model No. 121432-0124-E1

STANDARD HARDWARE - - PURCHASE LOCALLY

NOTE: All component dimensions given in U.S.inches.  
1 inch = 25.4 mm

# TILLER - - MODEL NUMBER 917.293310

## TRANSMISSION



### KEY PART NO. NO.

NO.	NO.	DESCRIPTION
1	165728	Transmission Assembly (Includes Key Nos. 2-52)
2	165729	Gearcase, L.H. w/Bearing (Includes Key No. 4)
3	161963	Gasket, Gearcase
4	5020J	Bearing, Needle
5	1370H	Washer, Thrust 5/8 x 1.10 x 1/32
6	137335	Pinion, Input
7	145101	Shaft, Input
8	4895H	Bearing, Needle
9	154467	Washer, Seal
10	7392M	Bail, Steel
11	100371K	Spring, Shift, Fork
12	106160X	O-Ring
13	142145	Arm, Shift
14	8353J	Fork, Shift
15	12000039	Ring, Klip
16	154466	Shaft, Shift
18	4358J	Washer
19	12000040	Ring, Klip
20	102114X	Gear, Assembly, Reverse Idler (Includes Key Nos. 21 and 22)
21	102115X	Gear, Reverse Idler
22	6803J	Bearing, Needle
23	102111X	Shaft, Reverse Idler
24	STD551143	*Washer, Lock 7/16
25	STD541143	*Nut, Hex 7/16-20
27	143009	Bearing, Shaft, Ground Drive L.H.
28	106390X	Spacer 0.765 x 1.125 x 1.23
29	102134X	Chain #35-50 Pitch

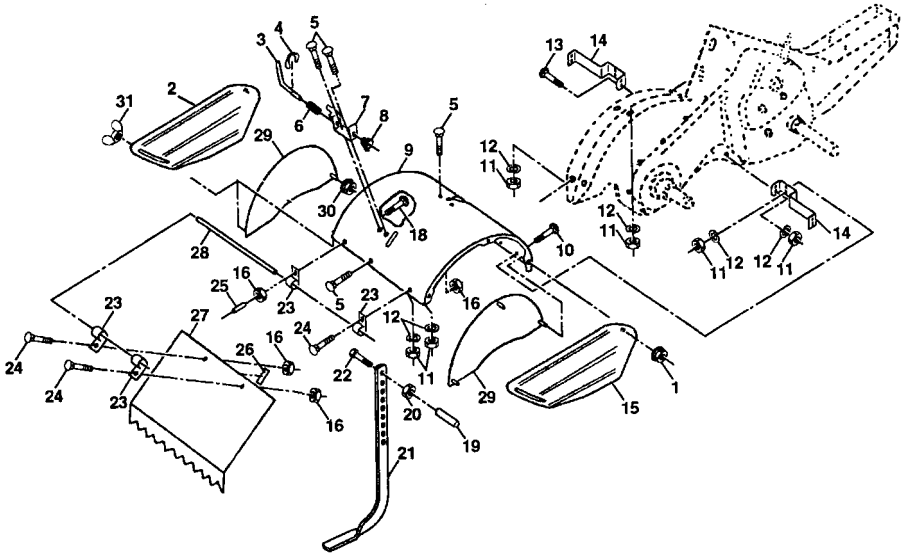
### KEY PART NO. NO.

NO.	NO.	DESCRIPTION
30	150737	Ground Shaft Assembly
31	143008	Bearing, Shaft, Ground Drive R.H.
32	106388X	Spacer 0.70 x 1.00 x 1.150
33	102121X	Sprocket and Gear Assembly
34	102112X	Shaft, Reduction (2nd)
35	102101X	Screw, Whiz, Lock 5/16-18 x 3-1/2
36	154355	Sprocket Assembly w/Bearing (Includes Key Nos. 37 and 38)
37	4422J	Bearing, Needle
38	154356	Sprocket, Tine
39	105345X	Gear, Cluster, Red 1st & 2nd
40	105346X	Gear, Reverse
41	8358J	Shaft, Reduction (1st)
42	4220R	Washer, Thrust
43	106146X	Spacer 1.01 x 1.75 x 0.760
44	155236	Seal Asm. Oil
48	165732	Gearcase, R.H. w/Bearing (Includes Key No. 8)
49	132688	Shaft, Tine
50	106147X	Chain, Roller #50-50 Pitch
51	17720408	Screw 1/4-20 x 1/2
52	STD541031	*Nut, Hex 5/16-18
53	165140	Bearing Kit, Tine Shaft
54	17720412	Screw 1/4-20 x 3/4
--	6066J	Grease, Plastilube #1

\* STANDARD HARDWARE - - PURCHASE LOCALLY  
 NOTE: All component dimensions given in U.S.inches.  
 1 inch = 25.4 mm

# TILLER - - MODEL NUMBER 917.293310

## TINE SHIELD



### KEY PART

NO.	NO.	DESCRIPTION
1	98000129	Nut, Flange 5/16-18
2	161415X558	Shield, Side, Outer L. H.
3	8393J	Pin, Stake, Depth
4	12000036	Ring, Klip
5	STD533107	*Bolt, Carriage 5/16-18 x 3/4 Gr 5
6	8394J	Spring
7	8392J	Bracket, Latch
8	109230X	Spring, Depth Stake
9	124289X558	Shield, Tine
10	STD533110	*Bolt, Carriage 5/16-18 x 1 Gr. 5
11	STD541031	*Nut, Hex 5/16-18
12	STD551131	*Washer, Lock 5/16
13	STD533112	Bolt, Carriage 5/16-18 x 1-1/4
14	124311X	Bracket, Shield Tine
15	161414X558	Shield, Side, Outer R.H.
16	73510400	Nut, Hex 1/4-20

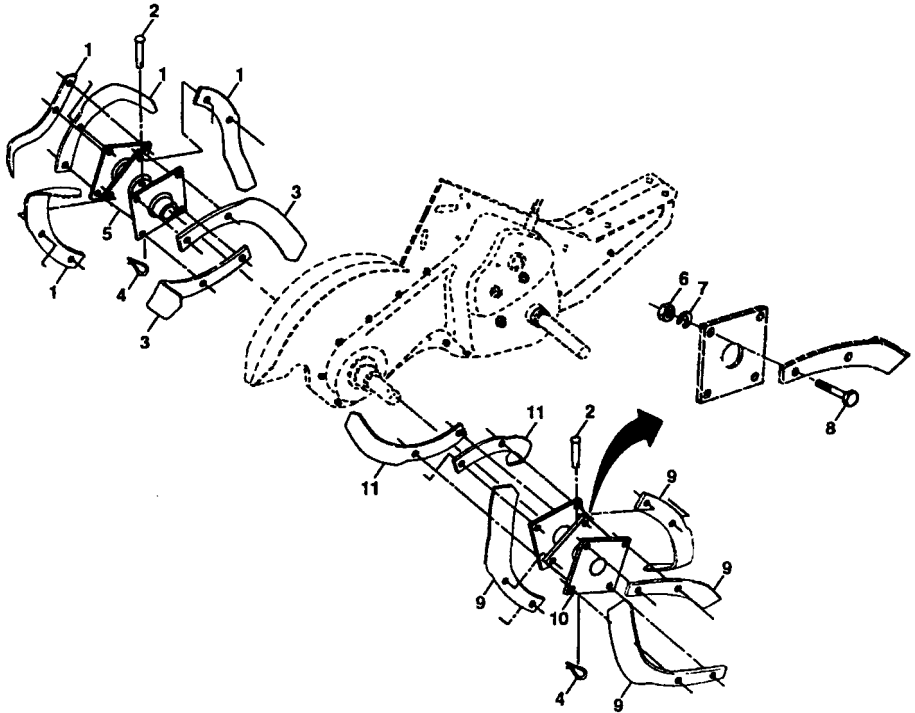
### KEY PART

NO.	NO.	DESCRIPTION
18	STD532512	*Bolt, Carriage 1/4-20 x 1-1/4 Gr. 5
19	102701X	Grip
20	STD541037	*Nut, Hex 3/8-16
21	102156X	Stake, Depth
22	74930632	Bolt, Hex 3/8-16 x 2
23	4440J	Hinge
24	STD532505	*Bolt, Carriage 1/4-20 x 1/4
25	6712J	Cap, Vinyl
26	109227X	Pad, Idler
27	102695X558	Shield, Leveling
28	120588X	Pin, Hinge
29	124309X558	Shield, Side
30	73970500	Locknut, Hex, Flange
31	162175	Nut, Wing Forged 5/16-18

\* STANDARD HARDWARE - - PURCHASE LOCALLY  
**NOTE:** All component dimensions given in U.S. inches  
 1 inch = 25.4 mm

# TILLER -- MODEL NUMBER 917.293310

## TINE ASSEMBLY



### KEY PART

NO.	NO.	DESCRIPTION
1	4459J	Tine, Outer, L.H.
2	132673	Pin, Shear
3	6554J	Tine, Inner, L.H.
4	163552	*Clip, Hairpin
5	132727	Assembly, Hub and Plate, L.H.
6	73610600	Nut, Hex 3/8-24
7	STD551137	*Washer, Lock 3/8
8	74610616	Bolt, Hex 3/8-24 x 1

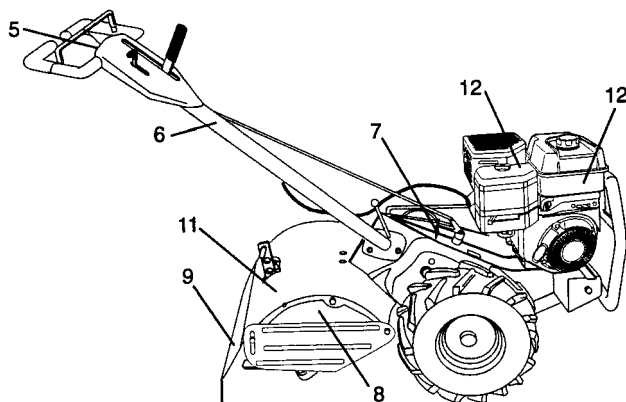
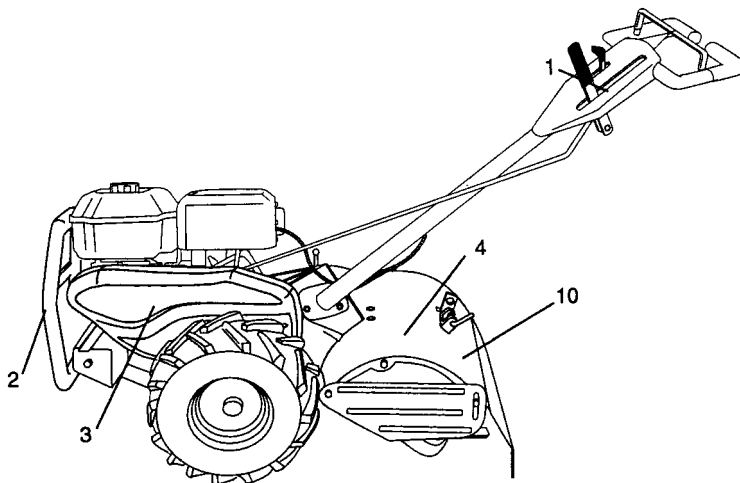
### KEY PART

NO.	NO.	DESCRIPTION
9	4460J	Tine, Outer, R.H.
10	132728	Assembly, Hub and Plate, R.H.
11	6555J	Tine, Inner, R.H.

\* STANDARD HARDWARE -- PURCHASE LOCALLY  
 NOTE: All component dimensions given in U.S. inches.  
 1 inch = 25.4 mm

# TILLER -- MODEL NUMBER 917.293310

## DECALS



### KEY PART NO. NO.

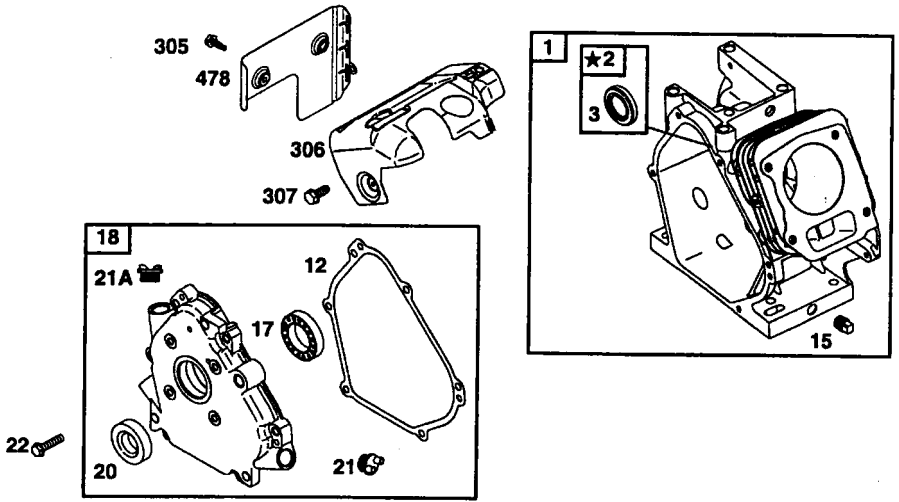
1	166213
2	145023
3	166134
4	166133
5	137538
6	120431X
7	102180X
8	157984
9	120075X
10	163094
11	162215
12	166138
13	166854
--	166007

### DESCRIPTION

1	Decal, Logo
2	Decal, Logo
3	Decal, Logo
4	Decal, Description
5	Decal, Caution, Drive Control
6	Decal, Hand Placement
7	Decal, Shift Indicator
8	Decal, Tine, Shield, Counter Rotating Tines
9	Decal, Warning, Rotating Tines
10	Decal, Tine Depth Stake
11	Decal, Tine, Shield, Warning Dome
12	Decal, Engine
13	Decal, Engine OHP REF
--	Manual, Owner's (Eng/Span)



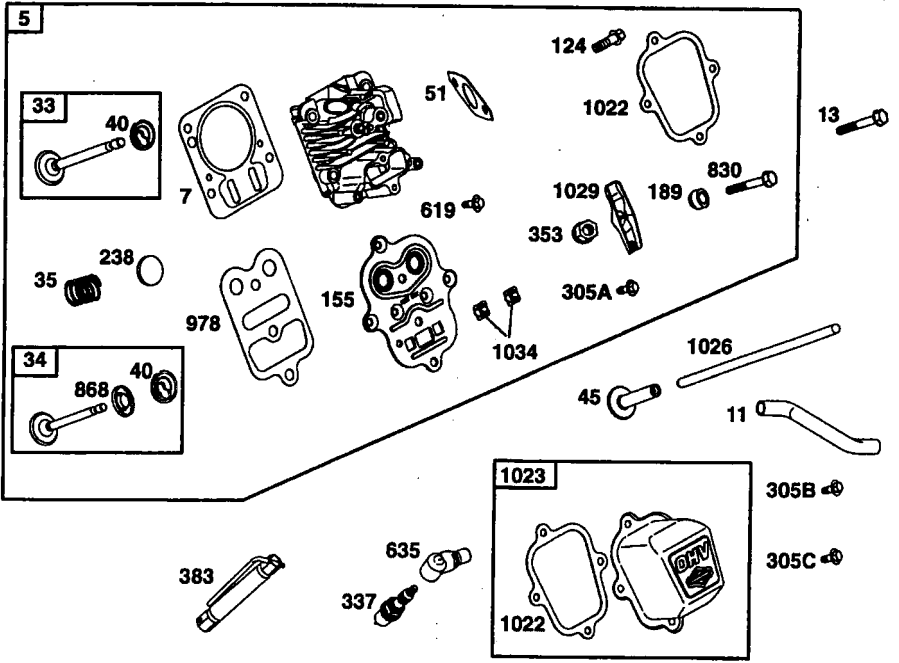
**TILLER - - MODEL NUMBER 917.293310**  
**ENGINE, BRIGGS & STRATTON - - MODEL NUMBER 121432-0124-E1**



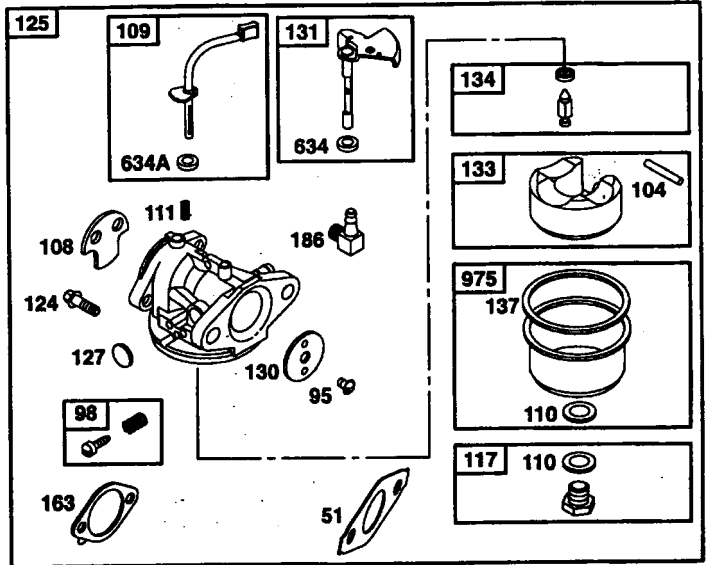
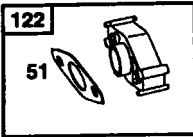
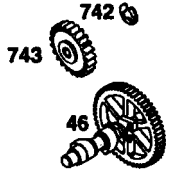
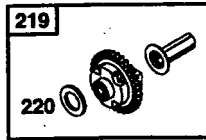
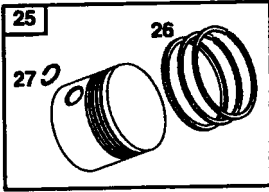
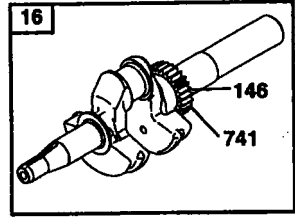
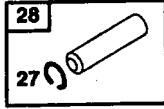
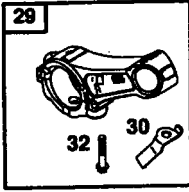
**1019 LABEL KIT**

**1058 OWNER'S MANUAL**

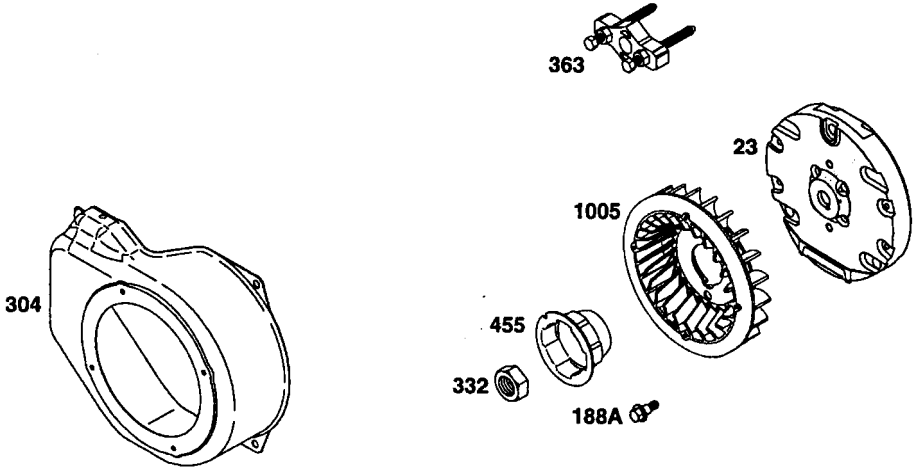
**\* REQUIRES SPECIAL TOOLS TO INSTALL. SEE REPAIR INSTRUCTION MANUAL.**



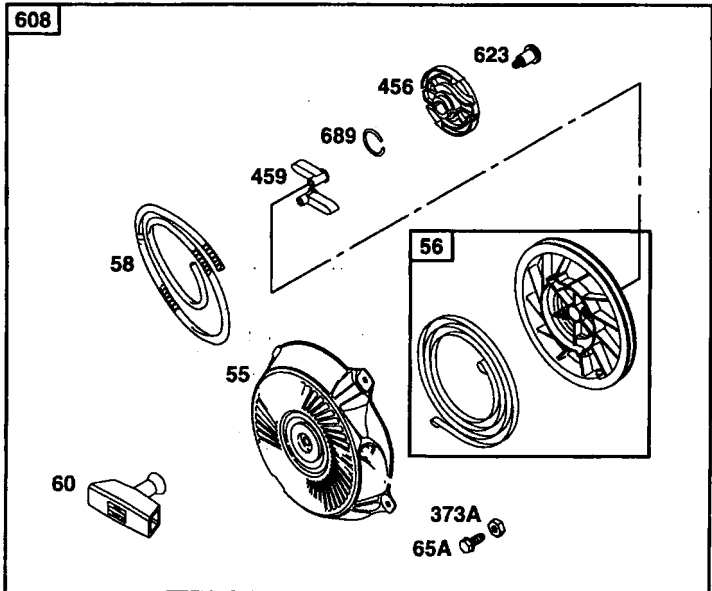
**TILLER - - MODEL NUMBER 917.293310**  
**ENGINE, BRIGGS & STRATTON - - MODEL NUMBER 121432-0124-E1**



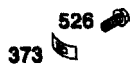
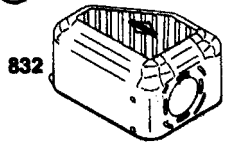
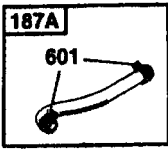
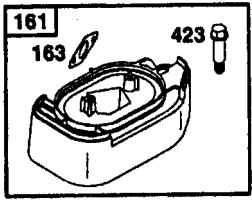
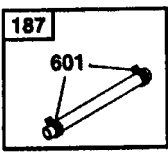
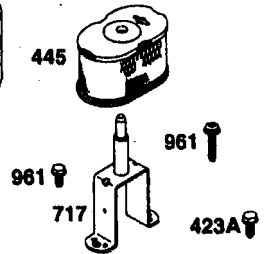
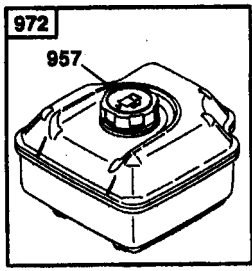
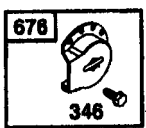
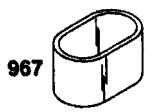
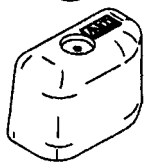
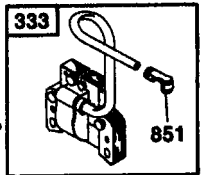
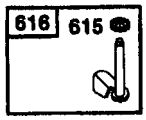
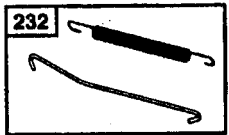
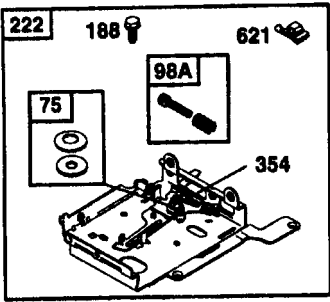
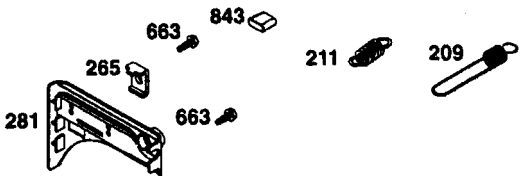
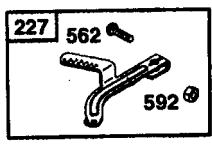
**TILLER -- MODEL NUMBER 917.293310**  
**ENGINE, BRIGGS & STRATTON -- MODEL NUMBER 121432-0124-E1**



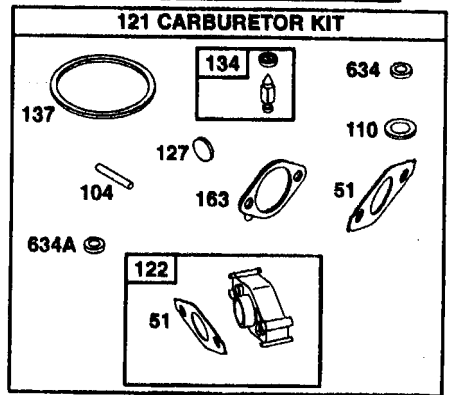
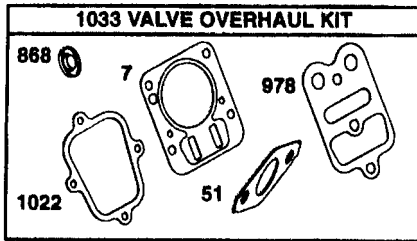
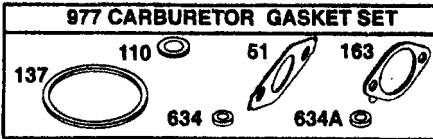
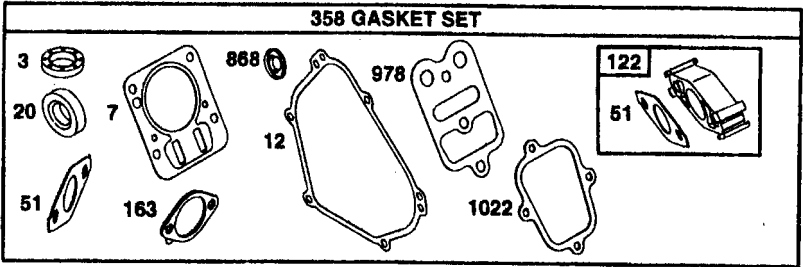
305A 



**TILLER - - MODEL NUMBER 917.293310**  
**ENGINE, BRIGGS & STRATTON - - MODEL NUMBER 121432-0124-E1**



**TILLER - - MODEL NUMBER 917.293310**  
**ENGINE, BRIGGS & STRATTON - - MODEL NUMBER 121432-0124-E1**



# TILLER - - MODEL NUMBER 917.293310

## ENGINE, BRIGGS & STRATTON - - MODEL NUMBER 121432-0124-E1

KEY NO.	PART NO.	DESCRIPTION	KEY NO.	PART NO.	DESCRIPTION
1	690045	Cylinder Assembly	109	693628	Choke Shaft
2	399269	Bushing, Cylinder	110	— —	◆● Washer, Seal (Sold In Kit Only)
3	299819	★ Seal, Oil	111	262715	Spring Friction (Choke)
5	693643	Head, Cylinder	117	690048	Jet, Main (Standard)
7	273489	Δ★ Gasket, Cylinder Head	121	690032	Carburetor kit
11	693647	Tube, Breather	122	690043	★ Spacer, Carburetor
12	692549	★ Gasket, Crankcase	124	692568	Screw, Carburetor
13	95049	Screw, Cylinder Head	125	693518	Carburetor
15	94916	Plug, Oil Drain	127	— —	● Plug, Welch (Sold in Kit Only)
16	693403	Crankshaft	130	223470	Valve, Throttle
17	498185	Bearing, Ball	131	690024	Shaft Throttle
18	693204	Cover-Crankcase	133	398187	Float Carburetor
20	692550	★ Seal, Oil	134	398188	● Valve, Needle
21	281658	Cap, Oil Fill	137	— —	◆● Gasket Float Bowl (Sold In Kit Only)
21A	693463	Cap, Oil Fill	146	94388	Key, Timing
22	692551	Screw, Crankcase Cover	155	225430	Plate, Cylinder Head
23	692987	Flywheel	161	693459	Base, Air Cleaner
24	222698	Key, Flywheel	163	272948	◆●★ Gasket, Air Cleaner
25	499627	Piston Assembly (Std.)	176	94905	Screw, Shoulder
	692788	Piston Assembly, .010" O/S	186	493496	Connector, Hose
	692789	Piston Assembly, .020" O/S	187	298049	Line, Fuel (Cut to Required Length)
	692790	Piston Assembly, .030" O/S	187A	692601	Line, Fuel (Molded)
26	499631	Ring Set, (Std.)	188	94644	Screw, Control Bracket
	692785	Ring Set, .010" O/S	188A	692590	Screw, Shoulder
	692786	Ring Set, .020" O/S	189	263108	Ball, Rocker Arm
	692787	Ring Set, .030" O/S	209	693710	Spring, Governor
27	263190	Lock, Piston Pin	211	693710	Spring, Governor Idle
28	499423	Pin, Piston	219	693578	Gear Governor
29	690124	Rod, Connecting	220	221551	Washer -Thrust
30	225279	Dipper, Connecting Rod	222	693405	Bracket, Control
32	94699	Screw, Connecting Rod	227	499506	Lever, Governor
33	499642	Valve, Exhaust	232	693408	Spring, Link, Mechanical Governor
34	499641	Valve, Intake			
35	263149	Spring, Valve			
40	93312	Retainer, Valve			
45	262679	Tappet, Valve			
46	693404	Camshaft			
51	692555	★◆●Δ Gasket, Intake			
55	497442	Housing, Rewind Starter			
56	498144	Pulley, Starter			
58	280399	Rope, Starter			
60	281101	Grip, Starter Rope			
65	692608	Screw, Hex.			
65A	94904	Screw, Hex.			
75	495659	Washer, Set			
95	94098	Screw, Choke/Slotted			
98	398185	Screw, Idle Speed			
98A	493280	Screws Idle Speed			
104	231371	● Pin, Float Hinge			
108	223471	Valve, Choke			

RPM Settings Low: 1650-1850; High: 3500-3700.

★ Included in Gasket Set, Ref Number 358.

● Included in Carburetor Kit, Ref Number 121.

◆ Included in Carburetor Gasket Set, Ref Number 977.

Δ Included in Valve Overhaul Kit, Ref Number 1033.

**NOTE:** All component dimensions are given in U.S. inches. 1 inch = 25.4 mm

**TILLER - - MODEL NUMBER 917.293310**  
**ENGINE, BRIGGS & STRATTON - - MODEL NUMBER 121432-0124-E1**

KEY NO.	PART NO.	DESCRIPTION	KEY NO.	PART NO.	DESCRIPTION
238	263131	Cap, Valve	743	692566	Gear, Idler
265	221535	Clamp, Casing	819	692598	Screw, Muffler Strap
281	693407	Panel, Control	819A	94914	Screw
285	692595	Strap, Muffler	830	94993	Screw-Hex.
300	693593	Muffler, Exhaust	832	693583	Guard, Muffler
304	693621	Housing, Blower	836	94896	Screw, Muffler Guard
305	692577	Screw, Panel	836A	692596	Bracket, Muffler
305A	690960	Screw, Blower Housing	851	493880	Terminal, Cable
305B	692557	Screw, Rocker Cover 3/8" Long	863A	692596	Bracket, Muffler
305C	94786	Screw, Rocker Cover 7/16" Long	868	498592	★ Seal, Valve
306	693610	Shield, Cylinder	883	272309	Gasket, Exhaust
307	94515	Screw, Cylinder Shield	957	493988	Cap, Fuel Tank
332	94877	Nut, Flywheel	958	692586	Valve, Shutoff
333	692605	Armature, Magneto	961	963598	Screw, Air Cleaner Bracket
334	94731	Screw, Armature Magneto	967	273356	Filter, Air Pre-Cleaner
337	491055	Spark Plug	972	692587	Tank, Fuel
346	94896	Screw	975	493640	Bowl, Float
353	95137	Nut-Hex	977	690033	Gasket Set, Carburetor
354	692575	Nut, Lock	978	273346	★ Gasket, Plate
356	398808	Wire, Stop	1005	692592	Fan, Flywheel
358	690031	Gasket Set	1019	690035	Label Kit
363	19069	Flywheel Puller	1022	273241	★ Gasket, Rocker Cover
373	692582	Nut, Clip	1023	499924	Cover, Rocker
373A	94907	Nut, Hex.	1026	693517	Rod, Push
383	19374	Wrench, Spark Plug	1029	225246	Arm, Rocker
423	94655	Screw, Air Cleaner Base	1033	690034	Kit, Valve Overhaul
423A	94929	Screw, Air Cleaner Base	1034	281621	Guide, Push Rod
445	498596	Filter A/C Cartridge	1058	273700	Owner's Manual
455	225457	Cup, Flywheel	---	---	Replacement Engine 121432-0036-E2
456	281503	Retainer, Spring	---	---	Replacement S/B not available at this time
459	281505	Pawl, Ratchet			
467	493903	Knob, Air Cleaner			
478	693709	Panel			
526	94974	Screw			
562	94852	Bolt, Governor Lever			
592	231082	Nut, Governor Lever			
601	93053	Clamp, Hose			
608	497830	Starter, Rewind			
613	94706	Screw, Muffler Mounting			
615	94672	Retainer, Governor			
616	692547	Crank, Governor			
619	94744	Screw, Cyl. Head Plate			
621	396847	Switch, Stop			
623	94943	Screw, Shoulder			
634	---	◆● Washer Sold in Kit Only			
634A	---	◆● Washer (Sold in Kit Only)			
635	805529	Boot, Spark Plug			
642	693460	Cover, Air Cleaner			
663	692577	Screw, Casing Clamp			
676	393757	Deflector, Muffler			
689	263073	Spring, Friction			
717	693462	Air Cleaner Bracket			
741	263157	Gear, Timing			
742	692564	Ring, Retaining			

**RPM Settings Low: 1650-1850; High: 3500-3700.**

★ Included in Gasket Set, Ref Number 358.

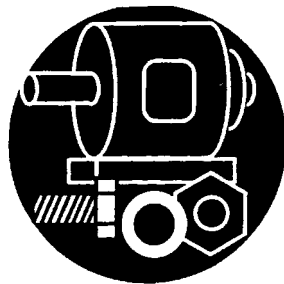
● Included in Carburetor Kit, Ref Number 121.

◆ Included in Carburetor Gasket Set, Ref Number 977.

△ Included in Valve Overhaul Kit, Ref Number 1033.

**NOTE: All component dimensions are given in U.S. inches. 1 inch = 25.4 mm**

For the repair or replacement parts you need  
delivered directly to your home  
Call 7 am - 7 pm, 7 days a week  
**1-800-366-PART**  
(1-800-366-7278)  
Para ordenar piezas con entrega a  
domicilio – 1-800-659-7084



For in-house major brand repair service  
Call 24 hours a day, 7 days a week  
**1-800-4-REPAIR**  
(1-800-473-7274)  
Para pedir servicio de reparación a  
domicilio – 1-800-676-5811



For the location of a Sears Parts and  
Repair Center in your area  
Call 24 hours a day, 7 days a week  
**1-800-488-1222**



For information on purchasing a Sears  
Maintenance Agreement or to inquire  
about an existing Agreement  
Call 9 am – 5 pm, Monday–Saturday  
**1-800-827-6655**



When requesting service or ordering  
parts, always provide the following  
information:

- Product Type
- Part Number
- Model Number
- Part Description

**SEARS**  
**REPAIR SERVICES**  
*America's Repair Specialists*