

SEARS

CRAFTSMAN[®]

MODEL NUMBER 917.373491 OWNER'S MANUAL

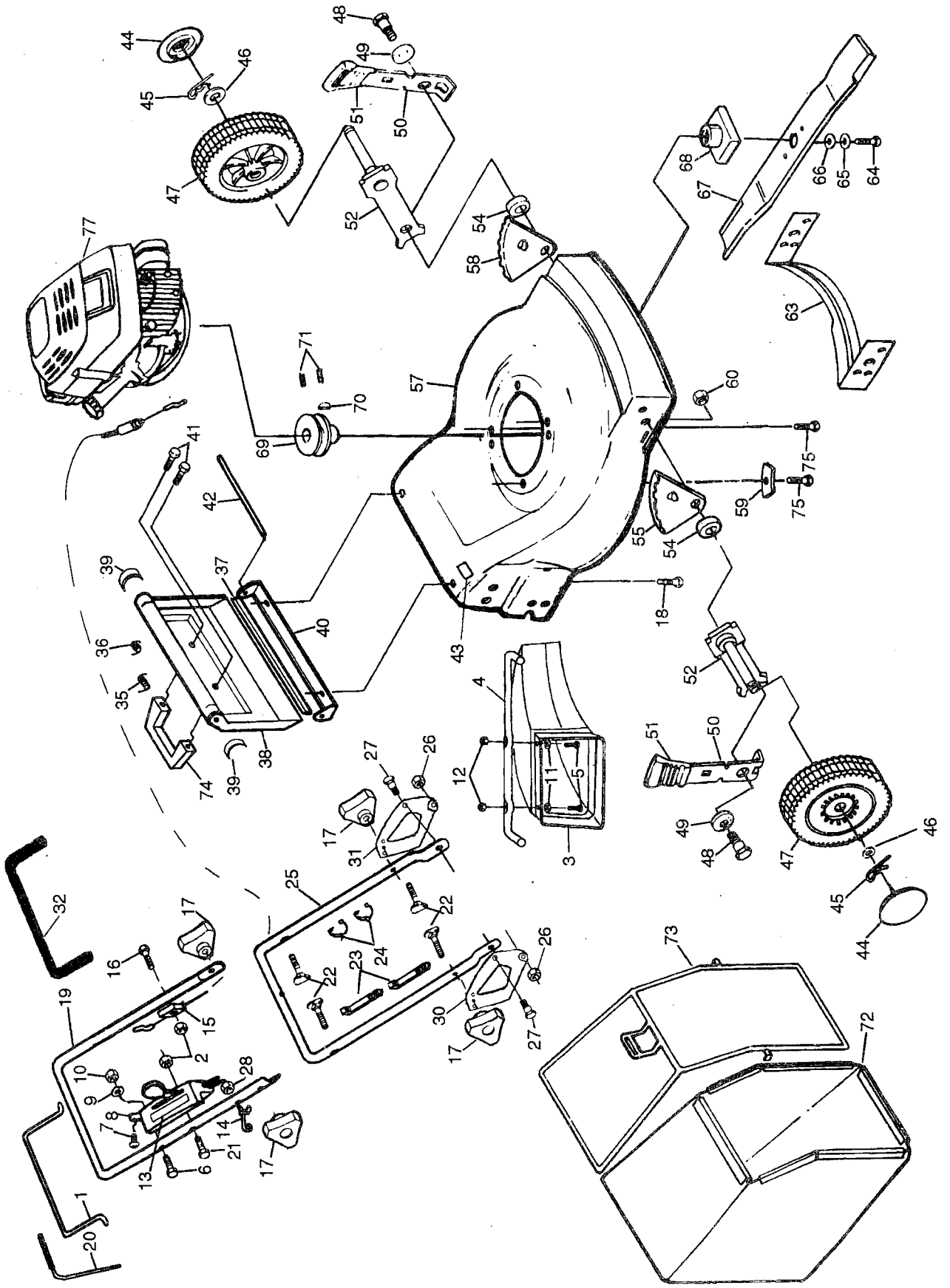
- **Assembly**
- **Operation**
- **Customer Responsibilities**
- **Service**
- **Adjustments**
- **Repair Parts**

Caution:
Read and Follow
all Safety Rules
and Instructions
Before Operating
This Equipment



Sears, Roebuck and Co., Hoffman Estates, IL 60179 U.S.A.

REPAIR PARTS
CRAFTSMAN 22" ROTARY LAWN MOWER - MODEL NO. 917.373491

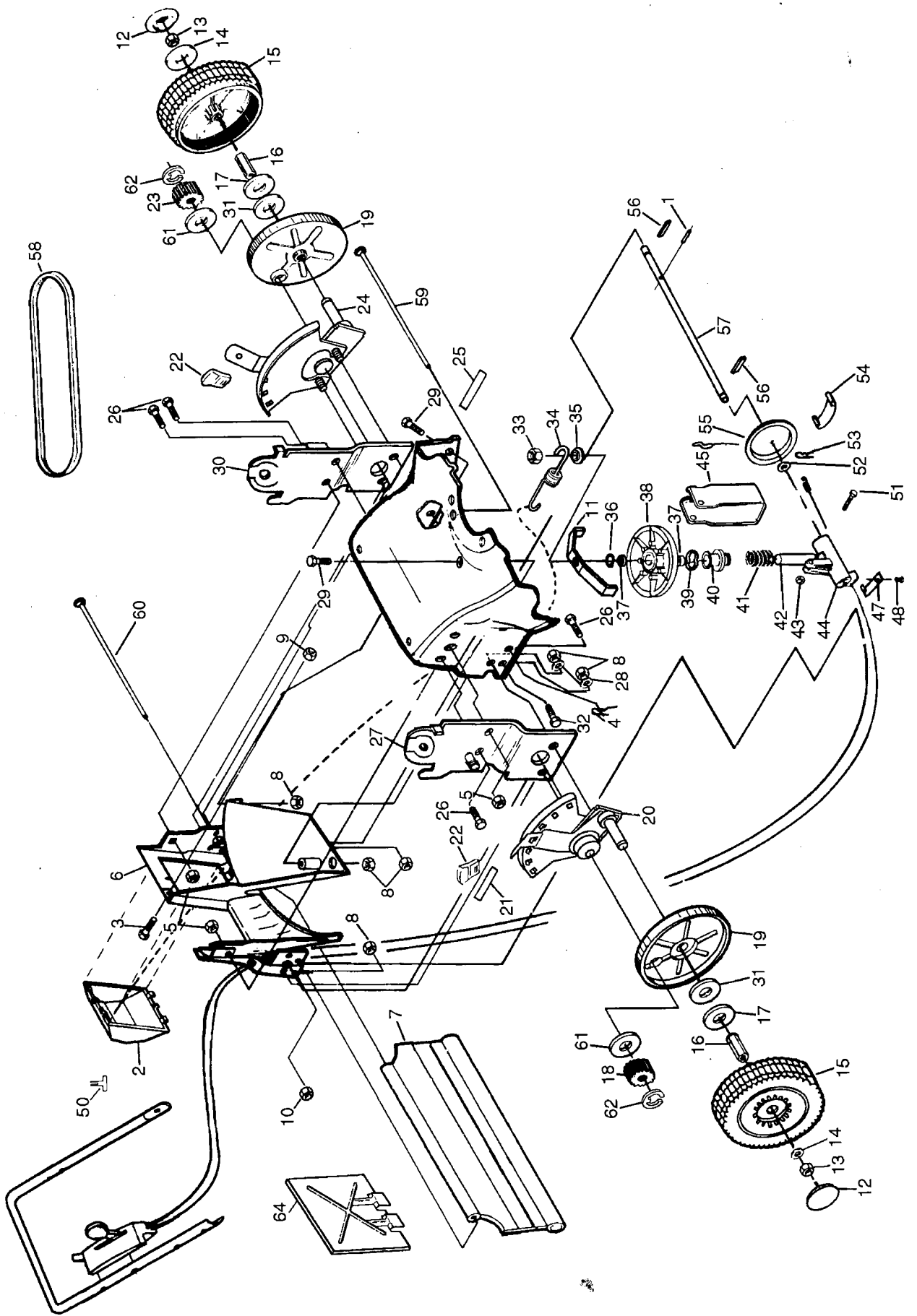


REPAIR PARTS

CRAFTSMAN 22" ROTARY LAWN MOWER- -MODEL NO. 917.373491

KEY NO.	PART NO.	DESCRIPTION	KEY NO.	PART NO.	DESCRIPTION
1	700618	Operator Presence Control Bar	45	85179	Retainer Clip
2	STD541425	Locknut 1/4-20	46	52160	Washer
3	701539	Clipping Deflector	47	132646	Wheel & Tire Assembly
4	851625	Deflector Bar	48	84921	Shoulder Bolt
5	86536	Truss Head Screw #10-24 x 3/4	49	62335	Belleville Washer
6	751311	Machine Screw 1/4 x 2-1/2	50	850862X004	Selector Spring
7	701036	Screw #6-32 x 1/2	51	132800	Selector Knob
8	701275	Rear Disc Drive Assembly Control	52	87886X004	Axle Arm Assembly
9	751050	Spacer	54	84920	Spacer
10	128861	Locknut 1/4-20	55	132512	Wheel Adjusting Bracket (Right)
11	52784	Washer	57	48361	Lawn Mower Housing (Incl. Key #43,63)
12	69180	Locknut #10-24	58	132513	Wheel Adjusting Bracket (Left)
13	751266	Speed Control Decal	59	851201X004	Engine Washer
14	132001	Rope Guide	60	751592	Locknut 3/8-16
15	701162	Engine Zone Control Cable	63	132251X479	Front Baffle
16	74350424	Hex Head Screw 1/4-20 x 1-1/2	64	851084	Hex Head Screw 3/8-24 x 1-3/8 (Grd. 8)
17	87692	Handle Knob	65	850263	Helical Lockwasher 3/8
18	54583	Hex Tapping Screw 1/4-20 x 1/2	66	851074	Hardened Washer
19	132670X479	Upper Handle	67	752234	22" Blade
20	700619	Drive Control Lever w/Grip	68	851514	Blade Adapter
21	86055	Screw 1/4-20 x 2-1/4	69	85543	Engine Pulley
22	131959	Handle Bolt 5/16-18 x 1-3/4	70	87677	Hi-Pro Key
23	66426	Wire Tie	71	STD502502	Set Screw 1/4-20 x 5/16
24	85827	Cable Clip	72	701558	Grass Bag
25	750579X479	Lower Handle	73	750675	Catcher Frame
26	STD541431	Locknut 5/16-18	74	750621	Door Handle
27	752183	Shoulder Bolt	75	850998	Hex Head Thread Rolling Screw 3/8-16 x 1-1/8
28	73510400	Locknut 1/4-20	77	700528	Engine - Craftsman Model No. 143.434032
30	752100X479	Handle Link (Right)	--	131986	Housing Decal "4 Speed Rear Drive"
31	752102X479	Handle Link (Left)	--	701696	Owner's Manual
32	129714	Handle Grip	Available accessories not included with lawn mower:		
35	750619	Spring (Right)	71	33623	Gas Can (2.5 gal.)
36	750620	Spring (Left)	71	33500	Fuel Stabilizer
37	128554	Seal Extrusion	71	33300	SAE 30W Oil (20 oz.)
38	750674	Rear Door	71	33417	Dust Shield
39	851639	Seal	71	33316	Mower Cover
40	750672X479	Hinge Bracket			
41	851552	Pan Head Hi Lo Screw #10-16 x 1/2			
42	752295	Hinge Rod			
43	85463	Danger Decal			
44	77400	Hubcap			

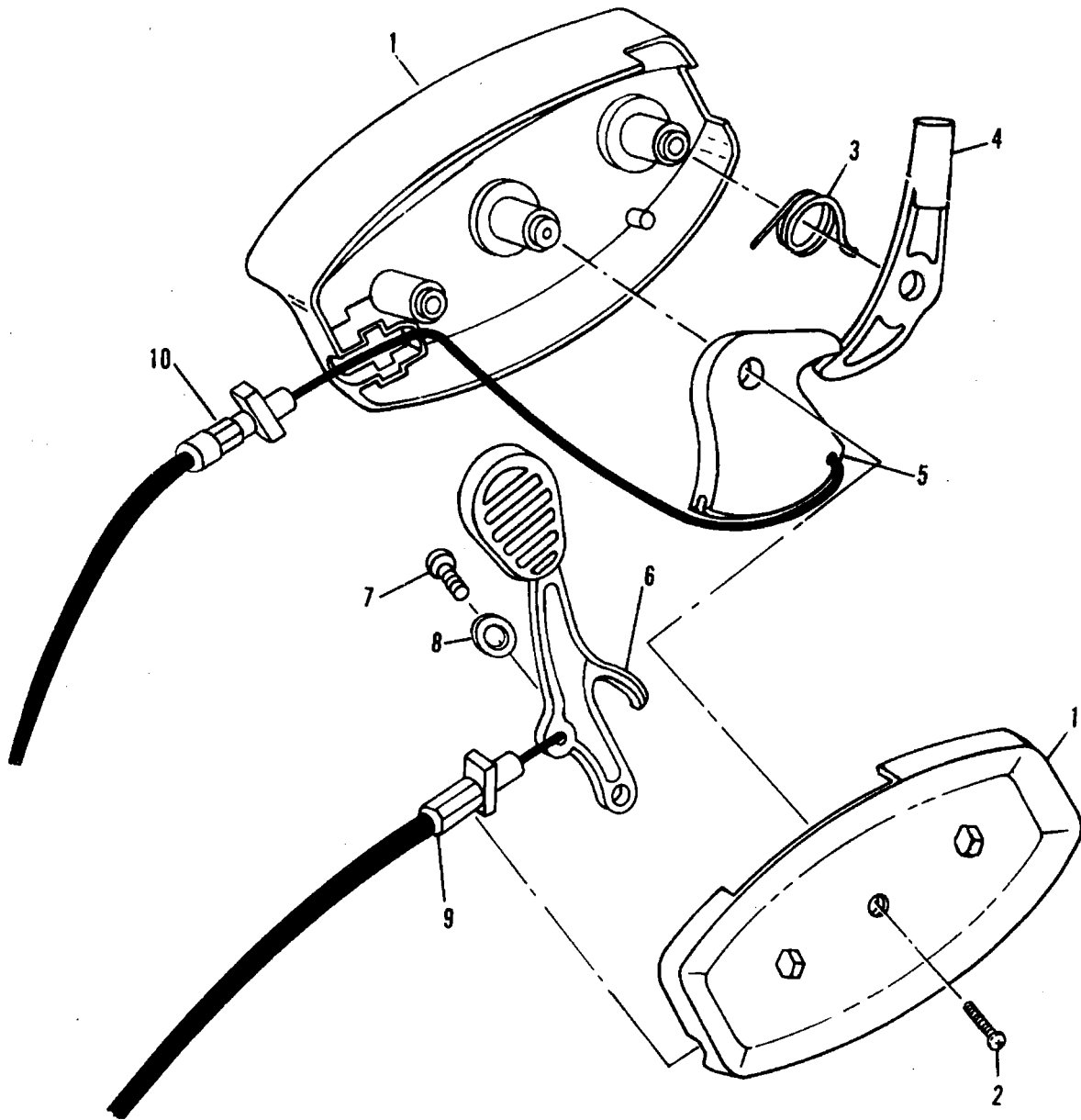
REPAIR PARTS
CRAFTSMAN 22" ROTARY LAWN MOWER - MODEL NO. 917.373491



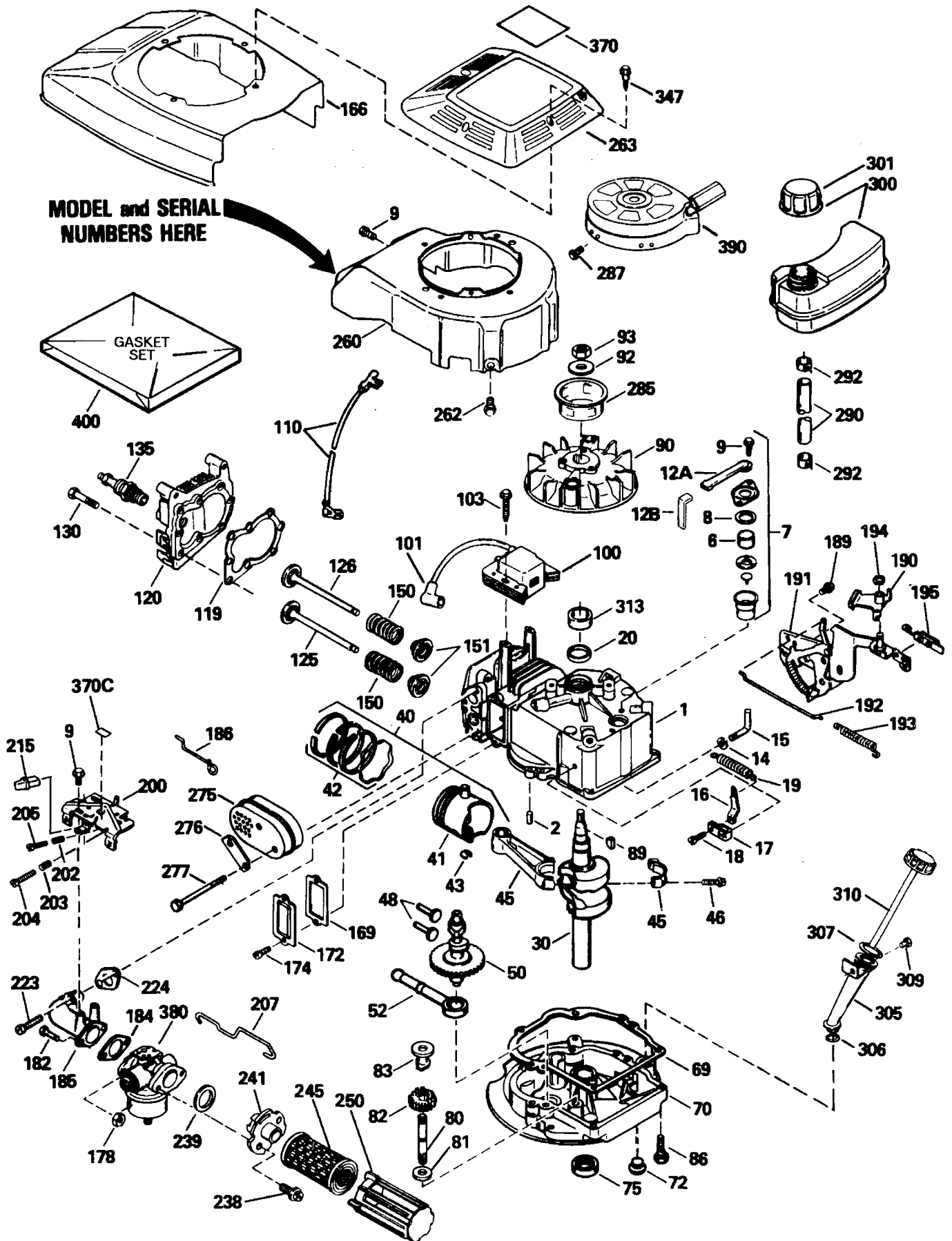
REPAIR PARTS

CRAFTSMAN 22" ROTARY LAWN MOWER- MODEL NO. 917.373491

KEY NO.	PART NO.	DESCRIPTION	KEY NO.	PART NO.	DESCRIPTION
1	851980	Drive Pawl	32	50705	Hex Head Screw 1/4-20 x 5/8
2	752036	Access Door	33	750253	Locknut 5/16-18
3	71011007	Hex Washer Head Screw #10-24 x 7/16	34	751888	Drive Spring
4	700279	Retainer Clip	35	750892	Spacer
5	751153	Locknut 5/16-18	36	12000028	Retaining Ring
6	133976	Back Plate/Baffle	37	751991	Bearing
7	750996	Rear Deflector	38	750684	Pulley
8	88349	Locknut 1/4-20	39	751659	Wave Washer
9	74189	Locknut #10-24	40	750680	Stand-Off
10	69180	Locknut #10-24	41	750834	Compression Spring
11	752170X004	Belt Keeper	42	750679	Oilite Bearing
12	77400	Hubcap	43	74189	Locknut #10-24
13	83923	Flanged Hex Locknut 3/8-16	44	48292	Drive Housing Kit
14	61537	Washer	45	752007X004	Rocker Arm
15	132965	Wheel & Tire Assembly	47	750682X004	Clamp
16	88446	Wheel Bushing	48	84026	Hex Head Screw #10-24 x 1/2
17	67725	Washer	50	752027X004	Drive Spring Retainer
18	752258	Pinion (Right)	51	751996	Shoulder Bolt
19	750734	Dust Cover	52	52160	Washer
20	132214	Wheel Adjuster Assembly (Right)	53	STD560607	Cotter Key
21	132958	Seven Position Decal (Right)	54	751581	Shield
22	132800	Selector Knob	55	750688	Friction Wheel Assembly
23	752259	Pinion (Left)	56	850018	Drive Pawl
24	132216	Wheel Adjuster Assembly (Left)	57	48308	Drive Shaft Kit
25	132959	Seven Position Decal (Left)	58	752035	Drive Belt
26	72070506	Carriage Bolt 5/16-18 x 3/4	59	750841	Hinge Rod
27	133060	Handle Bracket Assembly (Right)	60	128875	Skirt Rod
28	53847	Flat Washer 1/4	61	751999	Pinion Seal
29	72140405	Carriage Bolt 1/4-20 x 5/8 (Grd. 5)	62	12000057	E-Ring 7/16
30	133061	Handle Bracket Assembly (Left)	64	133170X479	Mulcher Plate
31	751658	Wave Washer			



KEY NO.	PART NO.	DESCRIPTION
1	48356	Control Head Kit (Incl. Ref. #2)
2	751837	Plastite Screw #8 x 7/8
3	751834	Torsion Spring
4	701599	Drive Actuator
5	751829	Drive Pulley
6	701100	Speed Lever
7	751831	Lever Mounting Plastite Screw #4 x 5/8
8	751840	Washer 1/8 x 3/8
9	128218	Speed Cable Assembly
10	128219	Drive Cable Assembly



CRAFTSMAN 4-CYCLE ENGINE

MODEL NUMBER 143.434032

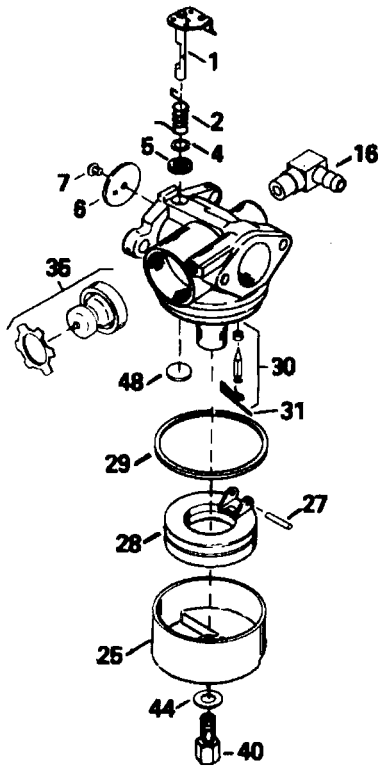
REF PART NO.	NO.	DESCRIPTION	REF PART NO.	NO.	DESCRIPTION
1	36265	Cylinder Assy. (Includes #2, 9 & 20)	166	35827	Shroud, Engine
2	26727	Pin, Dowel	169	27234A	* Gasket, Valve Spring Box
6	33734	Element, Breather	172	32755	Cover, Valve Spring Box
7	34214A	Breather Assembly (Includes Reference #6, 8, 9, 12A and 12B)	174	650128	Screw, Sems, Hex #10-24 x 1/2
8	33735	* Gasket, Breather	178	29752	Nut and Lock Washer 1/4-28
9	30200	Screw, Sems, Hex Washer Head, Self-Tapping #10-24 x 9/16	182	6201	Screw, Hex Cap Head 1/4-28 x 7/8
12A	33886	Tube, Breather	184	26756	* Gasket, Carburetor
12B	34695	Elbow, Breather Tube	185	31384A	Pipe, Intake (Includes Ref. #224)
14	28277	Washer, Flat	186	34337	Link, Governor Spring
15	30589	Rod, Governor (Includes Ref. #14)	189	650839	Screw, Sems, Hex Head, Powerlok 1/4-20 x 3/8
16	31383A	Lever, Governor	190	35831	Lever, Brake
17	31335	Clamp Governor Lever	191	35039B	Bracket, S.E. Brake (Includes #195)
18	650548	Screw, Hex Wash. Hd. #8-32 x 5/16	192	34966	Link, Control
19	36281	Spring, Extension	193	34965	Spring, Extension
20	32600	Seal, Oil	194	32309	Ring, Retaining
30	35996	Crankshaft Assembly	195	610973	Terminal Assembly
40	36073	Piston, Pin & Ring Assembly, Std.	200	35727	Bracket Assembly, Control (Includes Reference #202 thru 205)
	36074	Piston, Pin & Ring Assy., .010 Over	202	33802	Spring, Compression
	36075	Piston, Pin & Ring Assy., .020 Over (Assemblies Include #41, 42 and 43)	203	31342	Spring, Compression
41	36070	Piston & Pin Assembly, Std.	204	650549	Screw, Fillister Head #5-40 x 7/16
	36071	Piston & Pin Assembly .010 Over	205	650777	Screw, Fillister Head #6-32 x 21/32
	36072	Piston & Pin Assembly .020 Over (Assemblies Include Reference #43)	207	34336	Link, Throttle
42	36076	Ring Set, Piston, Standard Size	215	35511	Knob, Control
	36077	Ring Set, Piston .010 Oversize	223	650451	Screw, Sems, Hex Head 1/4-20 x 1
	36078	Ring Set, Piston .020 Oversize	224	34690A	* Gasket, Intake Pipe
43	20381	Ring, Piston Pin Retaining	238	650932	Screw, Hex Washer Head, Shoulder #10-32 x 49/64
45	30963B	Rod Assy., Connecting (Incl. #46)	239	34338	* Gasket, Air Cleaner
46	32610A	Bolt, Connecting Rod	241	35797	Collar, Air Cleaner
48	27241	Valve, Lifter	245	35066	Filter, Air Cleaner, Paper
50	35992	Camshaft (Mech. Comp. Release)	250	35065	Cover, Air Cleaner
52	29914	Pump Assembly, Oil	260	35826	Housing, Blower
69	35261	* Gasket, Mounting Flange	262	650831	Screw, Hex Washer Head, Powerlok Thread 1/4-20 x 15/32
70	34311D	Flange, Mounting (Incl. #72, 75, 80)	263	35821	Grill Assembly, Recoil
72	36083	Plug, Oil Drain	275	34613	Muffler Assembly (Includes #277)
75	27897	Seal, Oil	276	33753	Plate, Lock
80	30574A	Shaft, Governor	277	650795	Screw, Hex Head 1/4-20 x 2-1/4
81	30590A	Washer, Flat	285	35000	Hub, Starter
82	30591	Gear Assy., Governor (Incl. #81)	287	650926	Screw, Hex Washer Hd. #8-32 x 1/2
83	30588A	Spool, Governor	290	34357	Line, Fuel
86	650488	Screw, Sems, Hex 1/4-20 x 1-1/4	292	26460	Clamp, Fuel Line
89	611004	Key, Flywheel	300	35586	Tank Assembly (Incl. #292 & 301)
90	611109	Flywheel	301	35355	Cap, Fuel
92	650815	Washer, Belleville	305	35819A	Tube, Oil Fill (Includes Ref. # 309)
93	650816	Nut, Flywheel	306	34265	* Gasket, Fill Tube
100	34443A	Solid State Assembly	307	35499	"O" Ring
101	610118	Cover, Spark Plug	309	650936	Screw, Hex Washer Head, Shoulder #10-32 x 13/32
103	650814	Screw, Sems, Torx T-15, Hex Washer Head #10-24 x 1	310	35822	Dipstick, Oil Fill
110	34961	Wire, Ground	313	34080	Spacer, Flywheel Key
119	33554A	* Gasket, Cylinder Head	347	650898	Screw, Hex Washer Head, Shoulder #10-32 x 27/32
120	34342	Head, Cylinder	370	35840	Decal, Name
125	29313C	Valve, Exhaust, Standard Size	370C	35167	Decal, Instruction
	29315C	Valve, Exhaust, 1/32" Oversize	380	632644	Carburetor (Includes Ref. #184)
126	29314B	Valve, Intake, Standard Size	390	590637	Starter, Rewind
	29315C	Valve, Intake, 1/32" Oversize (All Valves Include Reference #151)	400	35997	Gasket Set (Incl. Items Marked *)
130	6021A	Screw, Hex Flange 5/16-18 x 1-1/2			
135	35395	Spark Plug, Resistor Type (Champion RJ-19LM or Equivalent)			
150	35991	Spring, Valve			
151	31673	Cap, Lower Valve Spring			

RPM Setting: Low Speed: 2450-2750, High: 2900-3200
 * Indicates Parts Included in Gasket Set, Ref. #400
NOTE: All component dimensions given in U.S. inches
 1 inch = 25.4 mm

CRAFTSMAN 4-CYCLE ENGINE

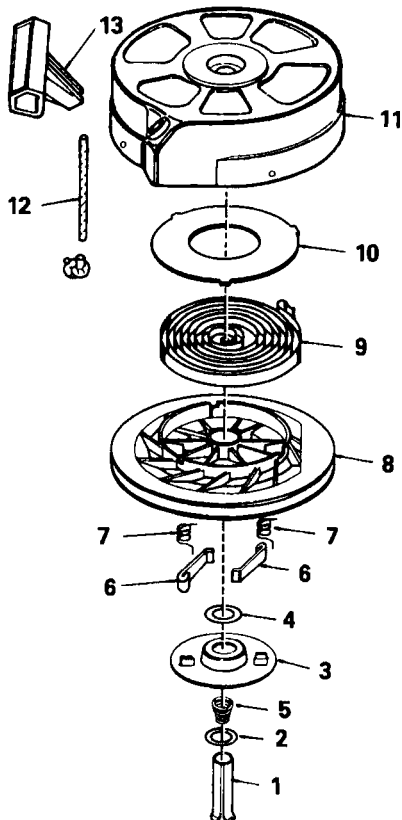
MODEL NUMBER 143.434032

CARBURETOR NO. 632644



REF PART NO.	PART NO.	DESCRIPTION
1	631615	Throttle Shaft and Lever Assembly
2	631767	Throttle Return Spring
4	631184	Dust Seal Washer, Throttle
5	631183	Dust Seal, Throttle
6	632590	Throttle Shutter
7	650506	Throttle and Choke Shutter Screw
16	632527	Fuel Fitting
25	631867	Float Bowl
27	631024	Shaft, Float
28	632019	Float
29	631028	"O" Ring, Float Bowl to Body
30	631021	Inlet Needle, Seat and Clip (Includes Reference Number 31)
31	631022	Spring Clip
35	36045	Primer Bulb/Retainer Ring
40	632578	High Speed Bowl Nut
44	27110	Bowl Nut Washer
48	631027	Welch Plug, Atmospheric Vent

REWIND STARTER NO. 590637



REF PART NO.	PART NO.	DESCRIPTION
--	590637	Starter, Rewind
1	590599A	Pin, Spring (Includes Reference #4)
2	590600	Washer
3	590615	Retainer
4	590601	Washer
5	590598	Spring, Brake
6	590616	Dog, Starter
7	590617	Spring, Dog
8	590618	Pulley
9	590619	Spring, Rewind
10	590620	Cover, Spring
11	590638	Housing Assembly, Starter
12	590535	Rope, Starter (98" Long, 9/64" Dia.)
13	590452	Handle, Starter

NOTE: All component dimensions given in U.S. inches
1 inch = 25.4 mm

TROUBLESHOOTING POINTS

PROBLEM	CAUSE	CORRECTION
Does not start	<ol style="list-style-type: none"> 1. Dirty air filter. 2. Out of fuel. 3. Stale fuel. 4. Water in fuel. 5. Spark plug wire is disconnected. 6. Bad spark plug. 7. Loose blade or broken blade adapter. 8. Control bar in released position 9. Control bar defective 	<ol style="list-style-type: none"> 1. Clean/replace air filter. 2. Fill fuel tank. 3. Drain tank and refill with fresh clean fuel. 4. Drain fuel tank and carburetor and refill tank with fresh gasoline. 5. Connect wire to plug. 6. Replace spark plug. 7. Tighten blade bolt or replace blade adapter. 8. Depress control bar to handle. 9. Replace control bar.
Loss of power	<ol style="list-style-type: none"> 1. Rear of lawn mower housing/blade dragging in heavy grass. 2. Cutting too much grass. 3. Dirty air filter. 4. Buildup of grass, leaves and trash under mower. 5. Too much oil in engine. 6. Walking speed too fast. 	<ol style="list-style-type: none"> 1. Set in "Higher Cut" position. 2. Set in "Higher Cut" position. 3. Clean/replace air filter. 4. Clean underside of mower housing. 5. Check oil level. 6. Cut at slower walking speed.
Poor cut - uneven	<ol style="list-style-type: none"> 1. Worn, bent or loose blade. 2. Low engine speed. 3. Buildup of grass, leaves, and trash under mower. 	<ol style="list-style-type: none"> 1. Replace blade. Tighten blade bolt. 2. Set engine speed control in fast position. 3. Clean underside of mower housing.
Excessive vibration	<ol style="list-style-type: none"> 1. Worn, bent or loose blade. 2. Bent engine crankshaft. 	<ol style="list-style-type: none"> 1. Replace blade. Tighten blade bolt. 2. Contact an authorized service center/department.
Starter rope hard to pull	<ol style="list-style-type: none"> 1. Engine flywheel brake is on when control bar is released. 2. Bent engine crankshaft 3. Blade adapter broken. 4. Blade dragging in grass. 	<ol style="list-style-type: none"> 1. Depress control bar to upper handle before pulling starter rope. 2. Contact an authorized service center/department. 3. Replace blade adapter. 4. Move lawn mower to cut grass or to hard surface to start engine.
Grass catcher not filling (If so equipped)	<ol style="list-style-type: none"> 1. Cutting height too low. 2. Lift on blade worn off. 3. Catcher not venting air. 4. Low engine speed. 	<ol style="list-style-type: none"> 1. Raise cutting height. 2. Replace blade. 3. Clean grass catcher. 4. Set engine speed control in fast position.
Hard to push	<ol style="list-style-type: none"> 1. Grass is too high or wheel height is too low. 2. Rear of lawn mower housing/blade dragging in grass. 3. Grass catcher too full. 4. Handle height position not right for you. 	<ol style="list-style-type: none"> 1. Raise cutting height. 2. Raise rear of lawn mower housing one (1) setting higher. 3. Empty grass catcher. 4. Adjust handle height to suit.
Loss of drive	<ol style="list-style-type: none"> 1. Drive not fully engaged. 2. Belt wear. 3. Belt off of pulley. 4. Lost spring tension retainer. 5. Friction wheel worn. 6. Friction wheel excessively wet. 	<ol style="list-style-type: none"> 1. Check and adjust drive control. 2. Check/replace drive belt. 3. Check/reinstall drive belt. 4. Replace spring retainer. 5. Check/replace friction wheel. 6. Allow wheel to dry before use.