

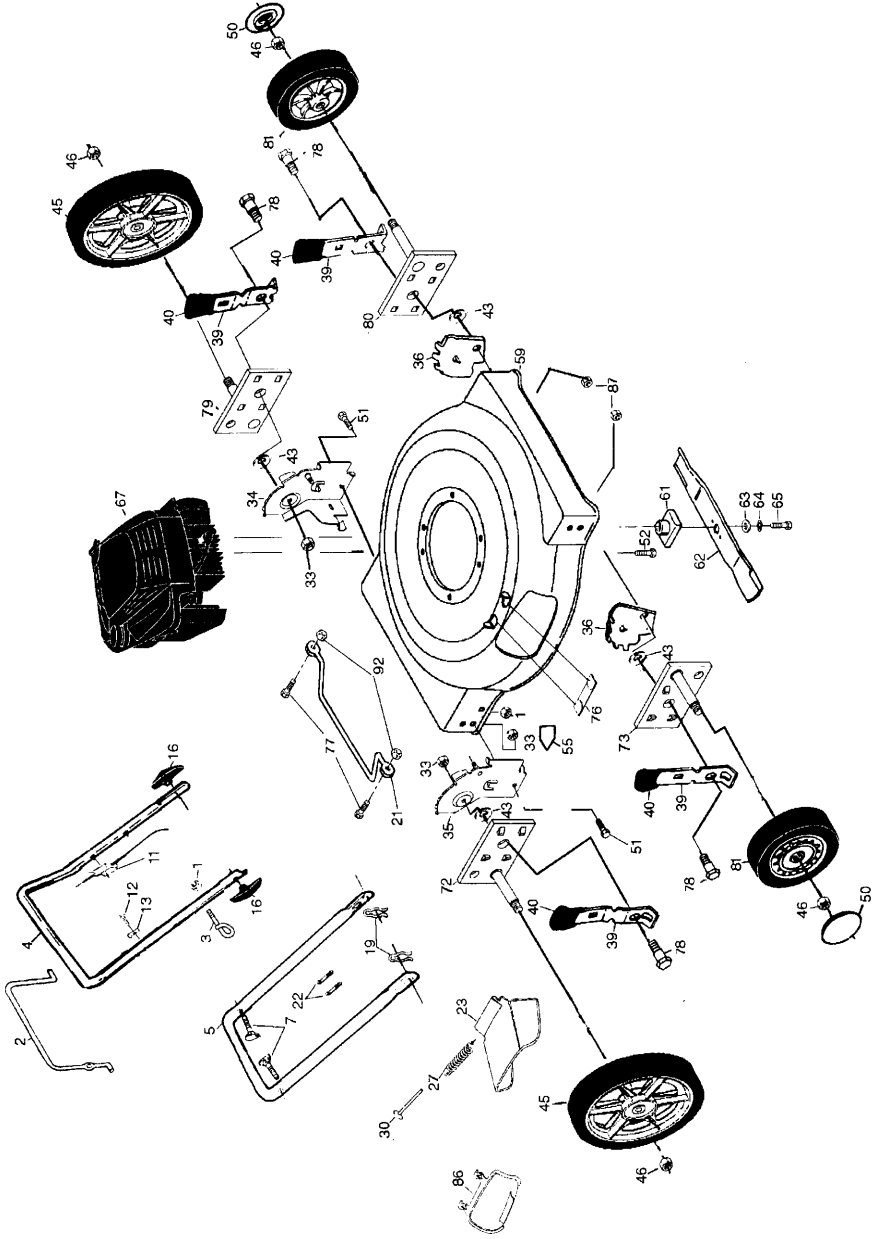
**REPAIR PARTS MANUAL  
MODEL NO. 377720  
LAWN MOWER**

---

**CRAFTSMAN<sup>®</sup>**

**REPAIR PARTS**

**ROTARY LAWN MOWER -- MODEL NUMBER 377720**



# REPAIR PARTS

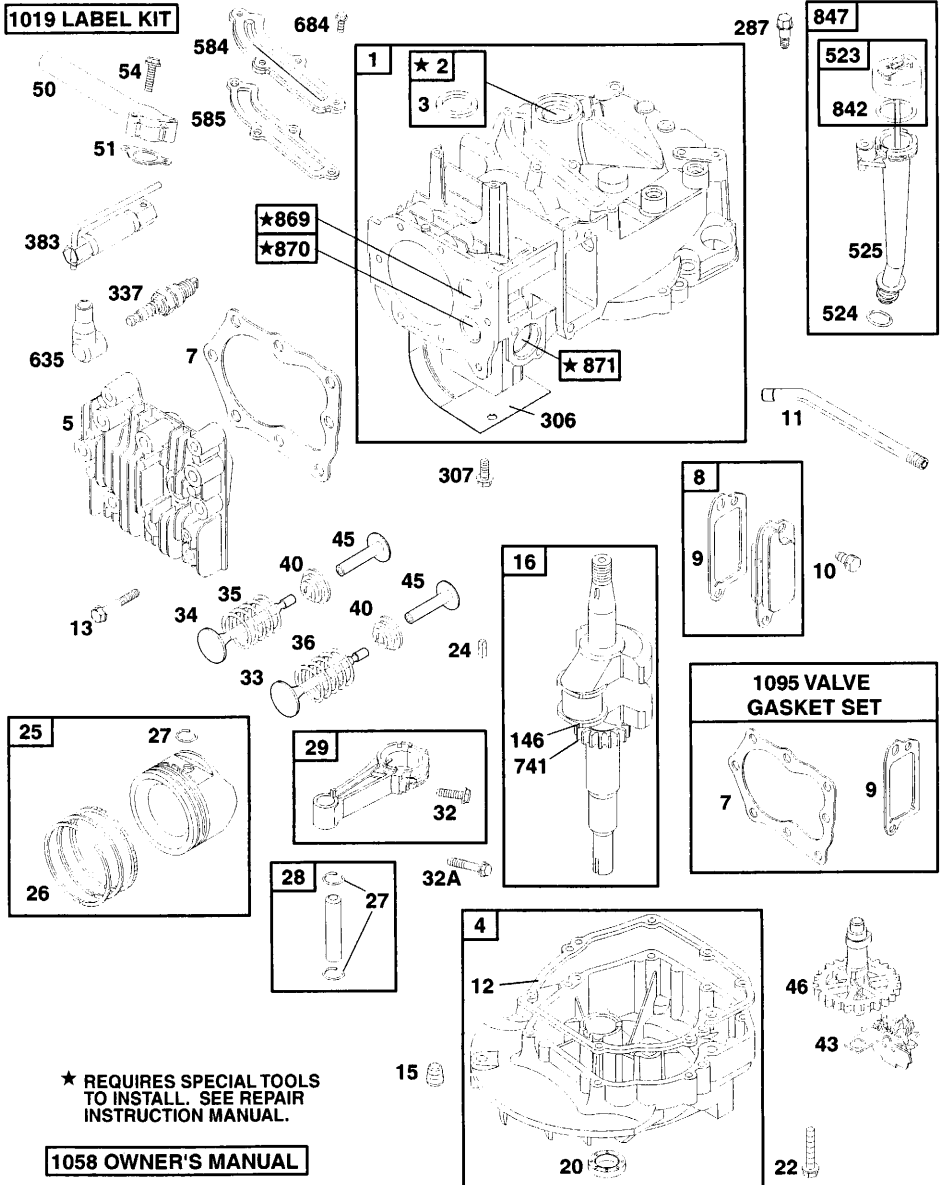
## ROTARY LAWN MOWER -- MODEL NUMBER 377720

KEY NO.	PART NO.	DESCRIPTION	KEY NO.	PART NO.	DESCRIPTION
1	63601	Locknut 1/4-20	52	150406	Hex Head Thread Rolling Screw 3/8-16 x 1
2	86902	Control Bar	55	145494	Danger Decal
3	132001	Rope Guide	59	168996	Lawn Mower Housing (Incl. Key Nos. 55)
4	169709X479	Upper Handle	61	851514	Blade Adapter
5	169708X479	Lower Handle	62	141114	22" Blade
7	131959	Handle Bolt 5/16-18	63	851074	Hardened Washer
11	130861	Engine Zone Control Cable	64	850263	Helical Lockwasher 3/8
12	750097	Hex Washer Head Screw #10-24 x 1/2	65	851084	Screw Hex Head 3/8-24 x 1-3/8 (Grd. 8)
13	86899X004	Up-Stop Bracket	67	-----	Engine, Briggs & Stratton, Model Number 12H802-2639-B1 (See Breakdown)
16	136376	Handle Knob	72	167131X004	Axle Arm Assm. (RR)
19	51793	Hairpin Cotter	73	167133X004	Axle Arm Assm. (RF)
21	154147	Footguard	76	161622	Clip, Closeout
22	66426	Wire Tie	77	85825	Screw
23	160831	Discharge Guard	78	160828	Shoulder Bolt
27	160832	Torsion Spring	79	167130X004	Axle Arm Assm. (LR)
30	160833	Hinge Rod	80	167132X004	Axle Arm Assm. (LF)
33	63124	Nut Hex Flange Lock 5/16 - 18	81	151162	Wheel Assembly (Front)
34	170373X479	Wheel Bracket Support (Left)	86	160830	Mulch Plate
35	170374X479	Wheel Bracket Support (Right)	87	751153	Lock Nut 5/16-18
36	160835X007	Wheel Bracket Adjuster	92	69180	Nut (for footguard)
39	168360X004	Selector Spring	--	178046	Operator's Manual (Euro)
40	701037	Selector Knob	--	178048	Operator's Manual (Scan)
43	19112222	Washer	--	178054	Replacement Parts Manual
45	172120	Wheel Assembly (Rear)			
46	83923	Locknut 1/16-18			
50	77400	Hubcap			
51	74760514	Hex Bolt			

**NOTE:** All component dimensions given in U.S. inches  
1 inch = 25.4 mm

# REPAIR PARTS

ROTARY LAWN MOWER - - MODEL NUMBER 377720  
 BRIGGS & STRATTON ENGINE MODEL NUMBER 12H802, TYPE NUMBER 2639-B1

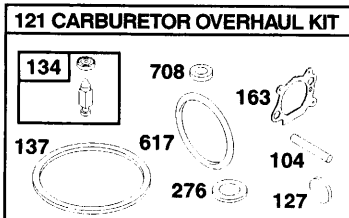
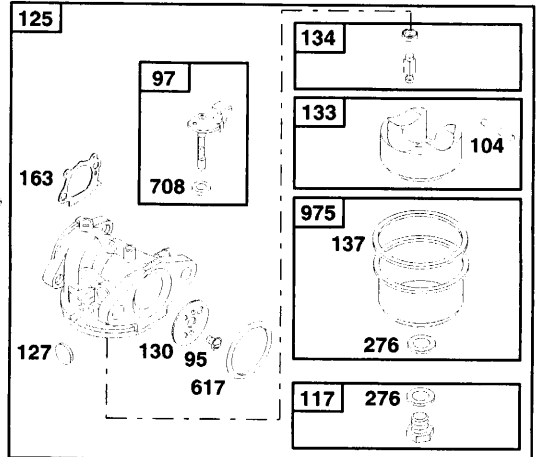
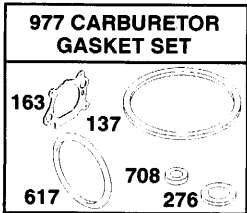
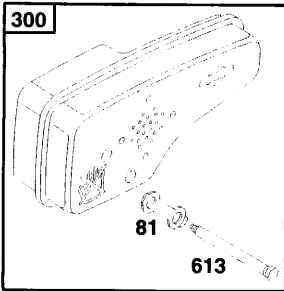
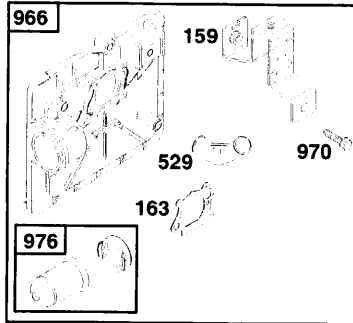
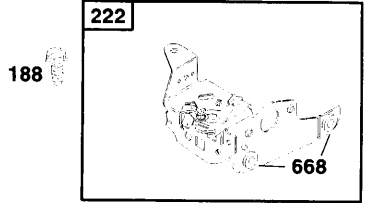
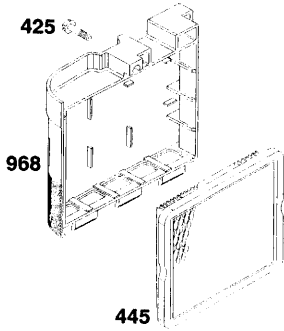


★ REQUIRES SPECIAL TOOLS TO INSTALL. SEE REPAIR INSTRUCTION MANUAL.

1058 OWNER'S MANUAL

# REPAIR PARTS

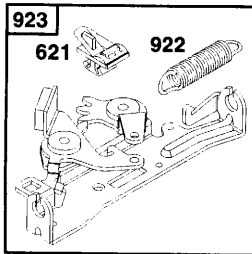
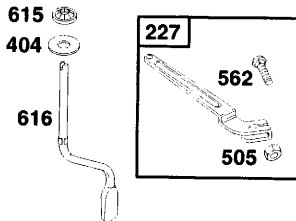
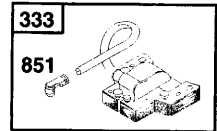
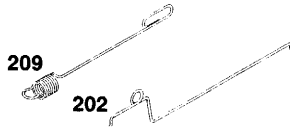
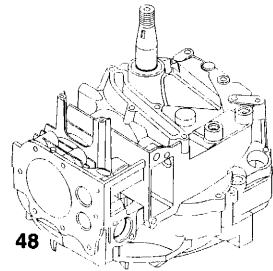
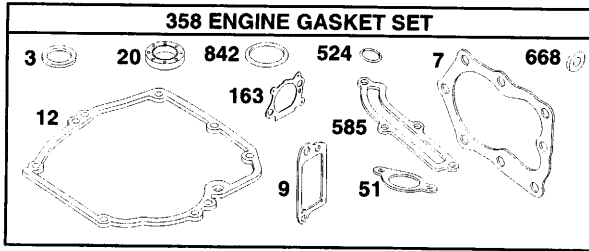
ROTARY LAWN MOWER - - MODEL NUMBER 377720  
BRIGGS & STRATTON ENGINE MODEL NUMBER 12H802, TYPE NUMBER 2639-B1





# REPAIR PARTS

ROTARY LAWN MOWER - - MODEL NUMBER 377720  
BRIGGS & STRATTON ENGINE MODEL NUMBER 12H802, TYPE NUMBER 2639-B1



# REPAIR PARTS

## ROTARY LAWN MOWER - - MODEL NUMBER 377720 BRIGGS & STRATTON ENGINE MODEL NUMBER 12H802, TYPE NUMBER 2639-B1

KEY PART NO. NO.	DESCRIPTION	KEY PART NO. NO.	DESCRIPTION
1	493260 Cylinder Assembly	48	498826 Short Block (Replacement Engine 12J802-2915-B1)
2	399269 Kit-Bushing/Seal	50	497465 Manifold-Intake
3	299819 • Seal-Oil (Magneto Side)	51	272199 • Gasket-Intake
4	493279 Sump-Engine	54	691650 Screw (Intake Manifold)
5	691160 Head-Cylinder	55	691421 Housing-Rewind Starter
7	692249 •+ Gasket-Cylinder Head	58	692259 Rope-Starter (Cut to Required Length)
8	695250 Breather Assembly	60	281434 Grip-Starter Rope
9	272481 •+ Gasket-Breather	65	690759 Screw (Rewind Starter)
10	691125 Screw (Breather Assembly)	81	691740 Lock-Muffler Screw
11	691781 Tube-Breather	95	691636 Screw (Throttle Valve)
12	692232 • Gasket-Crankcase	97	493267 Shaft-Throttle
13	690912 Screw (Cylinder Head)	104	691242 Ø Pin-Float Hinge
15	691680 Plug-Oil Drain	117	494870 Jet-Main (Standard)
16	691451 Crankshaft		497315 Jet-Main (High Altitude)
20	399781 • Seal-Oil (PTO Side)	121	498260 Kit-Carburetor Overhaul
22	691092 Screw (Engine Sump)	125	498170 Carburetor
23	692315 Flywheel	127	694468 Ø Plug-Welch
24	222698 Key-Flywheel	130	691203 Valve-Throttle
25	499429 Piston Assembly (Standard)	133	398187 Float-Carburetor
	499430 Piston Assy. (.010" O.S.)	134	398188 Ø Valve-Needle/Seat
	499431 Piston Assy. (.020" O.S.)	137	693981 Ø‡ Gasket-Float Bowl
	499432 Piston Assy. (.030" O.S.)	146	690979 Key-Timing
26	499425 Ring Set-Piston (Standard)	159	691753 Bracket-Air Cleaner Primer
	499426 Ring Set-Piston (.010" O.S.)	163	272653 •Ø‡ Gasket-Air Cleaner
	499427 Ring Set-Piston (.020" O.S.)	187	691050 Line-Fuel (Cut to Length)
	499428 Ring Set-Piston (.030" O.S.)	188	690877 Screw (Control Bracket)
27	691866 Lock-Piston Pin	190	690940 Screw (Fuel Tank)
28	499423 Pin-Piston	202	691829 Link-Mechanical Governor
29	499424 Rod-Connecting	209	690319 Spring-Governor
32	691664 Screw (Connecting Rod)	222	692467 Bracket-Control
32A	695759 Screw (Connecting Rod)	227	690783 Control Lever-Governor
33	262651 Valve-Exhaust	276	271716 Ø‡ Sealing Washer
34	262652 Valve-Intake	287	690940 Screw (Dipstick Tube)
35	691270 Spring-Valve (Intake)	300	692038 Muffler
36	691270 Spring-Valve (Exhaust)	304	695892 Housing-Blower
40	692194 Retainer-Valve	305	691108 Screw (Blower Housing)
43	691997 Slinger-Governor/Oil	306	690450 Shield-Cylinder
45	690548 Tappet-Valve		
46	691449 Camshaft		



# REPAIR PARTS

ROTARY LAWN MOWER - - MODEL NUMBER 377720  
BRIGGS & STRATTON ENGINE MODEL NUMBER 12H802, TYPE NUMBER 2639-B1

KEY PART NO. NO.	DESCRIPTION	KEY PART NO. NO.	DESCRIPTION
307 690345	Screw (Cylinder Shield)	684 690345	Screw
332 690662	Nut (Flywheel)		(Breather Passage Cover)
333 802574	Armature-Magneto	689 691855	Spring-Friction
334 691061	Screw (Armature Magneto)	708 691321	Ø‡ Seal-Throttle Shaft
337 802592	Spark Plug	741 691830	Gear-Timing
356 692390	Wire-Stop	842 691031	• Seal-O Ring (Dipstick Tube)
358 497316	Engine Gasket Set	847 692017	Assembly-Dipstick/Tube
363 19069	Flywheel Puller	851 493880	Terminal-Sparkplug
365 692524	Screw (Carburetor)	869 691155	Seat-Valve (Intake)
383 89838	Wrench-Spark Plug	870 690380	Seat-Valve (Exhaust)
404 690272	Washer (Governor Crank)	871 262001	Bushing-Guide (Exhaust)
425 690670	Screw (Air Cleaner Cover)	63709	Bushing-Guide (Intake)
443 692523	Screw	921 497233	Cover-Blower Housing
	(Air Cleaner Primer Base)	922 692135	Spring-Brake
445 491588	Filter-Air Cleaner Cartridge	923 695891	Brake
455 691219	Cup-Flywheel	957 397974	Cap-Fuel Tank
456 692299	Plate-Pawl Friction	966 496116	Base-Air Cleaner Primer
459 281505	Pawl-Ratchet	968 692298	Cover-Air Cleaner
505 231082	Nut (Gov. Control Lever)	969 690700	Screw
523 495264	Dipstick		(Blower Housing Cover)
524 692296	• Seal-Dipstick Tube	970 691669	Screw
525 495265	Tube-Dipstick		(Air Cleaner Primer Bracket)
529 691923	Grommet	972 495224	Tank-Fuel
562 92613	Bolt (Gov. Control Lever)	975 493640	Bowl-Float
584 692342	Cover-Breather Passage	976 496115	Primer-Carburetor
585 691879	• Gasket-Breather Passage	977 498261	Set-Carburetor Gasket
592 690800	Nut (Rewind Starter)	1019494256	Kit-Label
597 691696	Screw (Pawl Friction Plate)	1036695111	Label-Emissions
601 95162	Clamp-Hose	1058274265	Owner's Manual
608 497680	Starter-Rewind	1059692311	Kit-Screw/Washer
613 691340	Screw (Muffler)	1095498528	Set-Valve Gasket
615 690340	Retainer-Governor Shaft	1210498144	Assy-Pulley/Spring (Pulley)
616 691306	Crank-Governor	1211498144	Assy-Pulley/Spring (Spring)
617 270344	Ø‡ Seal-O Ring		
	(Intake Manifold)		
621 692310	Switch-Stop		
635 66538	Boot-Sparkplug		
668 493823	• Spacer (Includes 2)		
670 692294	Spacer-Fuel Tank		

- Included in Engine Gasket Set, Key #358
- Ø Included in Carb. Overhaul Kit, Key #121
- ‡ Included in Carb. Gasket Set, Key #977
- + Included in Valve Overhaul Kit, Key #1095

**NOTE:** All component dimensions given in U.S. inches  
1 inch = 25.4 mm

# SERVICE NOTES