

SEARS

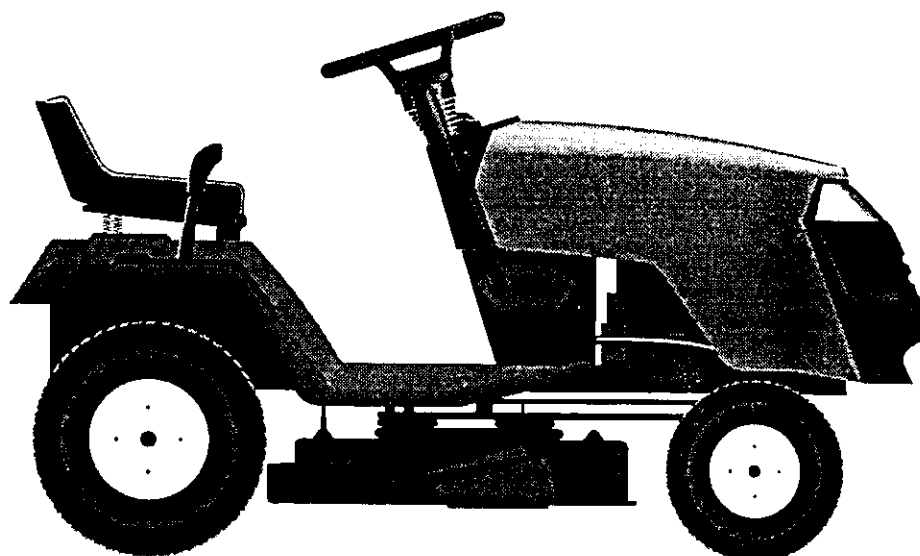
CRAFTSMAN[®]

MODEL NUMBER 917.252551 OWNER'S MANUAL

- Assembly
- Operation
- Customer Responsibilities
- Service and Adjustments
- Repair Parts

3one[™]
Convertible

1447



CAUTION: Read and follow all safety rules and instructions before operating this equipment.

Sears, Roebuck and Co., Hoffman Estates, IL 60179 U.S.A.



SAFETY RULES

Safe Operation Practices for Ride-On Mowers



IMPORTANT: THIS CUTTING MACHINE IS CAPABLE OF AMPUTATING HANDS AND FEET AND THROWING OBJECTS. FAILURE TO OBSERVE THE FOLLOWING SAFETY INSTRUCTIONS COULD RESULT IN SERIOUS INJURY OR DEATH.

I. GENERAL OPERATION

- Read, understand, and follow all instructions in the manual and on the machine before starting.
- Only allow responsible adults, who are familiar with the instructions, to operate the machine.
- Clear the area of objects such as rocks, toys, wire, etc., which could be picked up and thrown by the blade.
- Be sure the area is clear of other people before mowing. Stop machine if anyone enters the area.
- Never carry passengers.
- Do not mow in reverse unless absolutely necessary. Always look down and behind before and while backing.
- Be aware of the mower discharge direction and do not point it at anyone. Do not operate the mower without either the entire grass catcher or the guard in place.
- Slow down before turning.
- Never leave a running machine unattended. Always turn off blades, set parking brake, stop engine, and remove keys before dismounting.
- Turn off blades when not mowing.
- Stop engine before removing grass catcher or unclogging chute.
- Mow only in daylight or good artificial light.
- Do not operate the machine while under the influence of alcohol or drugs.
- Watch for traffic when operating near or crossing roadways.
- Use extra care when loading or unloading the machine into a trailer or truck.

II. SLOPE OPERATION

Slopes are a major factor related to loss-of-control and tipover accidents, which can result in severe injury or death. All slopes require extra caution. If you cannot back up the slope or if you feel uneasy on it, do not mow it.

DO:

- Mow up and down slopes, not across.
- Remove obstacles such as rocks, tree limbs, etc.
- Watch for holes, ruts, or bumps. Uneven terrain could overturn the machine. *Tall grass can hide obstacles.*
- Use slow speed. Choose a low gear so that you will not have to stop or shift while on the slope.
- Follow the manufacturer's recommendations for wheel weights or counterweights to improve stability.
- Use extra care with grass catchers or other attachments. These can change the stability of the machine.
- Keep all movement on the slopes *slow* and *gradual*. Do not make sudden changes in speed or direction.
- Avoid starting or stopping on a slope. If tires lose traction, disengage the blades and proceed slowly *straight* down the slope.

DO NOT:

- *Do not* turn on slopes unless necessary, and then, turn slowly and gradually downhill, if possible.
- *Do not* mow near drop-offs, ditches, or embankments. The mower could suddenly turn over if a wheel is over the edge of a cliff or ditch, or if an edge caves in.
- *Do not* mow on wet grass. Reduced traction could cause sliding.
- *Do not* try to stabilize the machine by putting your foot on the ground.
- *Do not* use grass catcher on steep slopes.

III. CHILDREN

Tragic accidents can occur if the operator is not alert to the presence of children. Children are often attracted to the machine and the mowing activity. *Never* assume that children will remain where you last saw them.

- Keep children out of the mowing area and under the watchful care of another responsible adult.
- Be alert and turn machine off if children enter the area.
- Before and when backing, look behind and *down* for small children.
- Never carry children. They may fall off and be seriously injured or interfere with safe machine operation.
- Never allow children to operate the machine.
- Use extra care when approaching blind corners, shrubs, trees, or other objects that may obscure vision.

IV. SERVICE

- Use extra care in handling gasoline and other fuels. They are flammable and vapors are explosive.
 - Use only an approved container.
 - Never remove gas cap or add fuel with the engine running. Allow engine to cool before refueling. Do not smoke.
 - Never refuel the machine indoors.
 - Never store the machine or fuel container inside where there is an open flame, such as a water heater.
- Never run a machine inside a closed area.
- Keep nuts and bolts, especially blade attachment bolts, tight and keep equipment in good condition.
- Never tamper with safety devices. Check their proper operation regularly.
- Keep machine free of grass, leaves, or other debris build-up. Clean oil or fuel spillage. Allow machine to cool before storing.
- Stop and inspect the equipment if you strike an object. Repair, if necessary, before restarting.
- Never make adjustments or repairs with the engine running.
- Grass catcher components are subject to wear, damage, and deterioration, which could expose moving parts or allow objects to be thrown. Frequently check components and replace with manufacturer's recommended parts, when necessary.
- Mower blades are sharp and can cut. Wrap the blade(s) or wear gloves, and use extra caution when servicing them.
- Check brake operation frequently. Adjust and service as required.



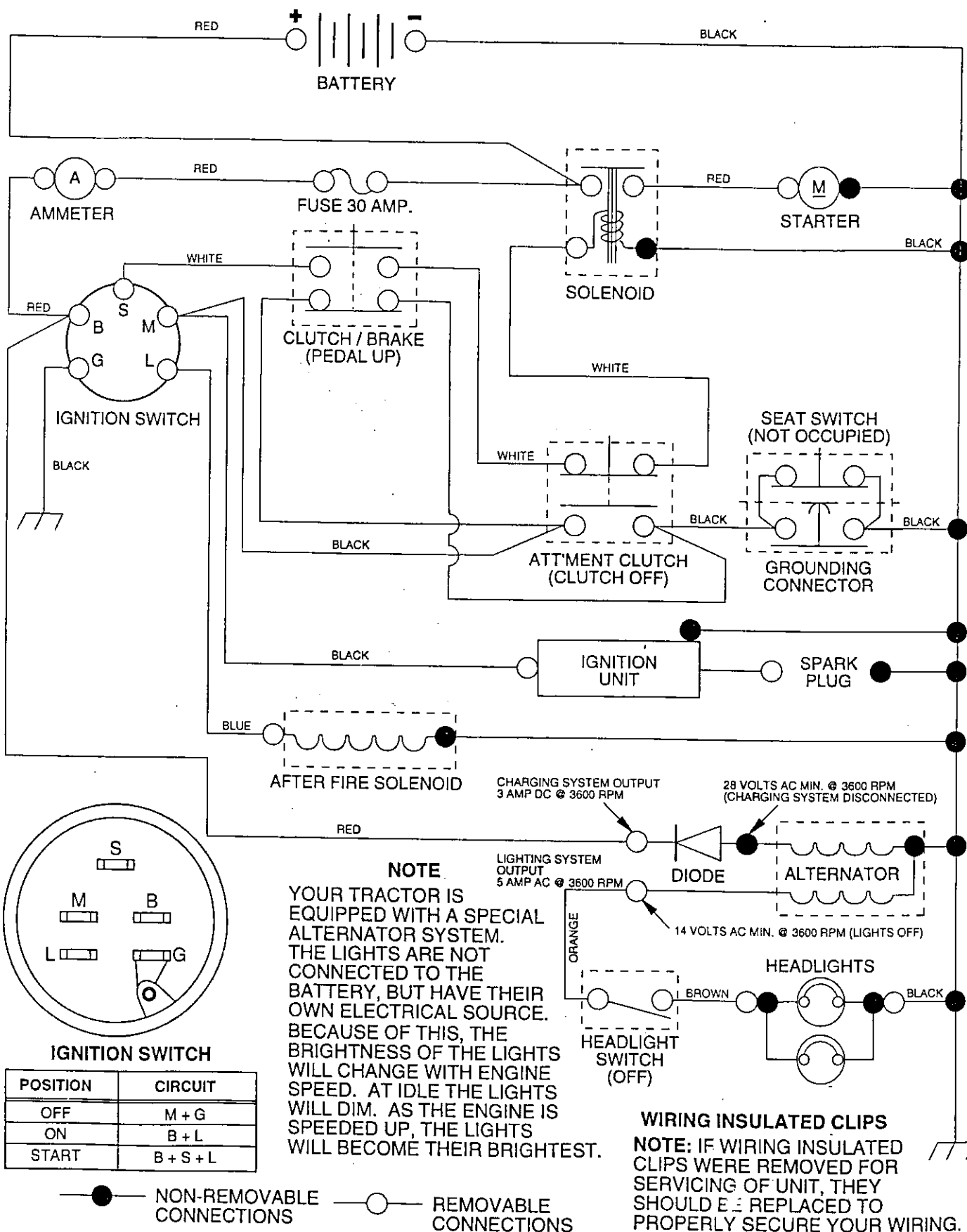
Look for this symbol to point out important safety precautions. It means **CAUTION!!! BECOME ALERT!!! YOUR SAFETY IS INVOLVED.**



CAUTION: Always disconnect spark plug wire and place wire where it cannot contact spark plug in order to prevent accidental starting when setting up, transporting, adjusting or making repairs.

TRACTOR -- MODEL NUMBER 917.252551

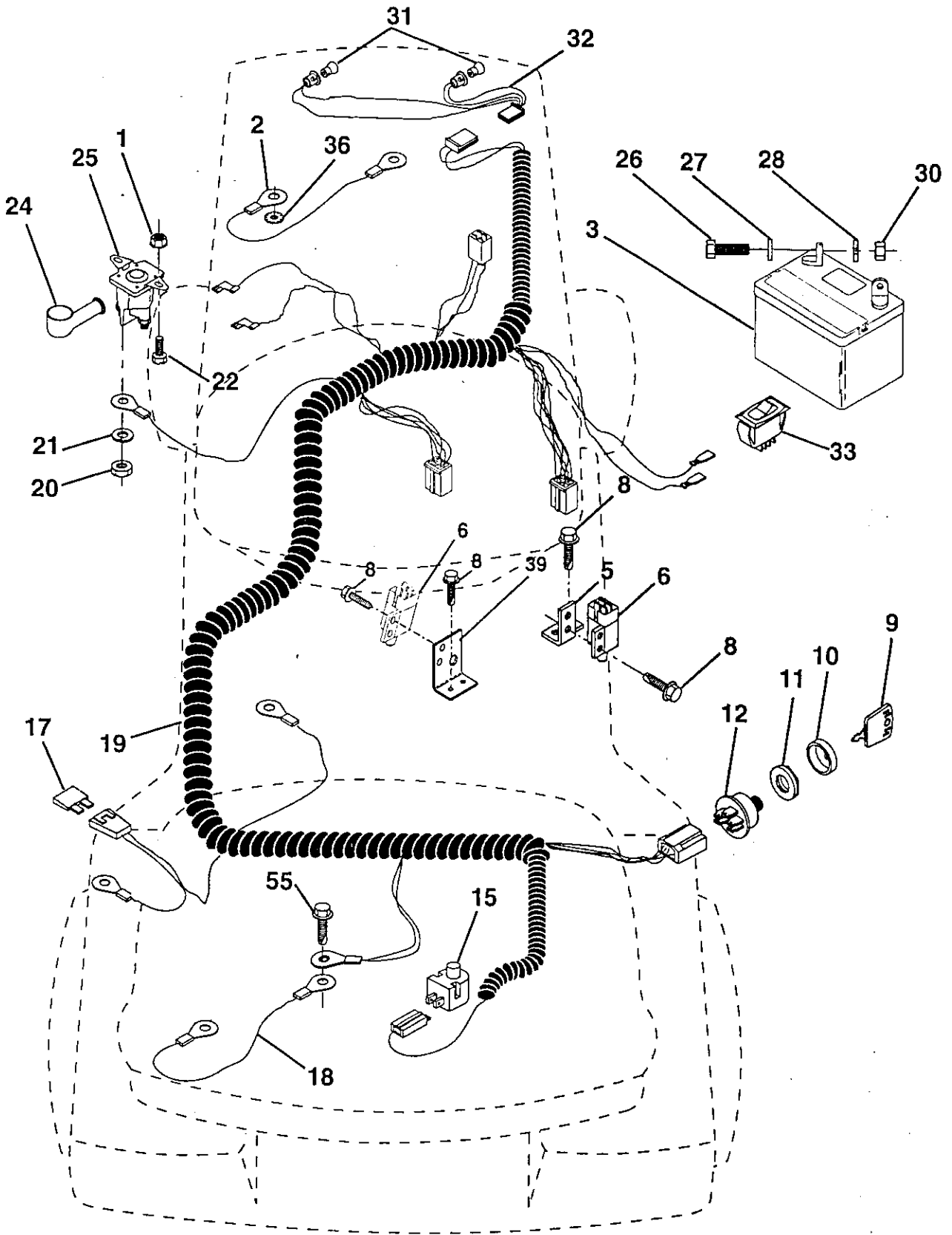
SCHEMATIC



REPAIR PARTS

TRACTOR -- MODEL NUMBER 917.252551

ELECTRICAL



REPAIR PARTS

TRACTOR -- MODEL NUMBER 917.252551

ELECTRICAL

KEY NO.	PART NO.	DESCRIPTION
1	73640400	Nut, Hex, Keps 1/4-20
2	108423X	Assembly, Cable
3	144925	Battery
5	108236X	Bracket, Switch
6	109553X	Switch, Interlock, 4 Terminal
8	STD601005	Screw, Hex Head, Self-Tapping #10-24 x 1/2
9	140403	Key, Molded
10	141226	Cover, Ignition Key
11	140400	Nut, Ignition
12	144921	Switch, Ignition
15	121305X	Switch, Plunger
17	108824X	Fuse
18	128353	Assembly, Cable
19	146064	Harness, Ignition
20	73350400	Nut, Hex, Jam 1/4-20
21	STD551125	Washer, Lock 1/4
22	71110408	Bolt, Hex, Fin. 1/4-20 UNC x 1/2 Grade 5
24	131563	Cover, Terminal
25	145673	Solenoid
26	74760412	Bolt, Hex Head 1/4-20 UNC x 3/4
27	STD551025	Washer 9/32 x 5/8 x 16 Gauge
28	STD551125	Washer, Lock 1/4
30	STD541025	Nut, Hex, Fin. 1/4-20 UNC
31	4152J	Bulb, Light
32	136850	Harness, Headlight
33	110712X	Switch, Light
36	STD551225	Washer, Lock, Internal Tooth 1/4
39	141735	Bracket Switch Clutch
55	17490508	Screw Thdrol 5/16 - 18 x 1/2

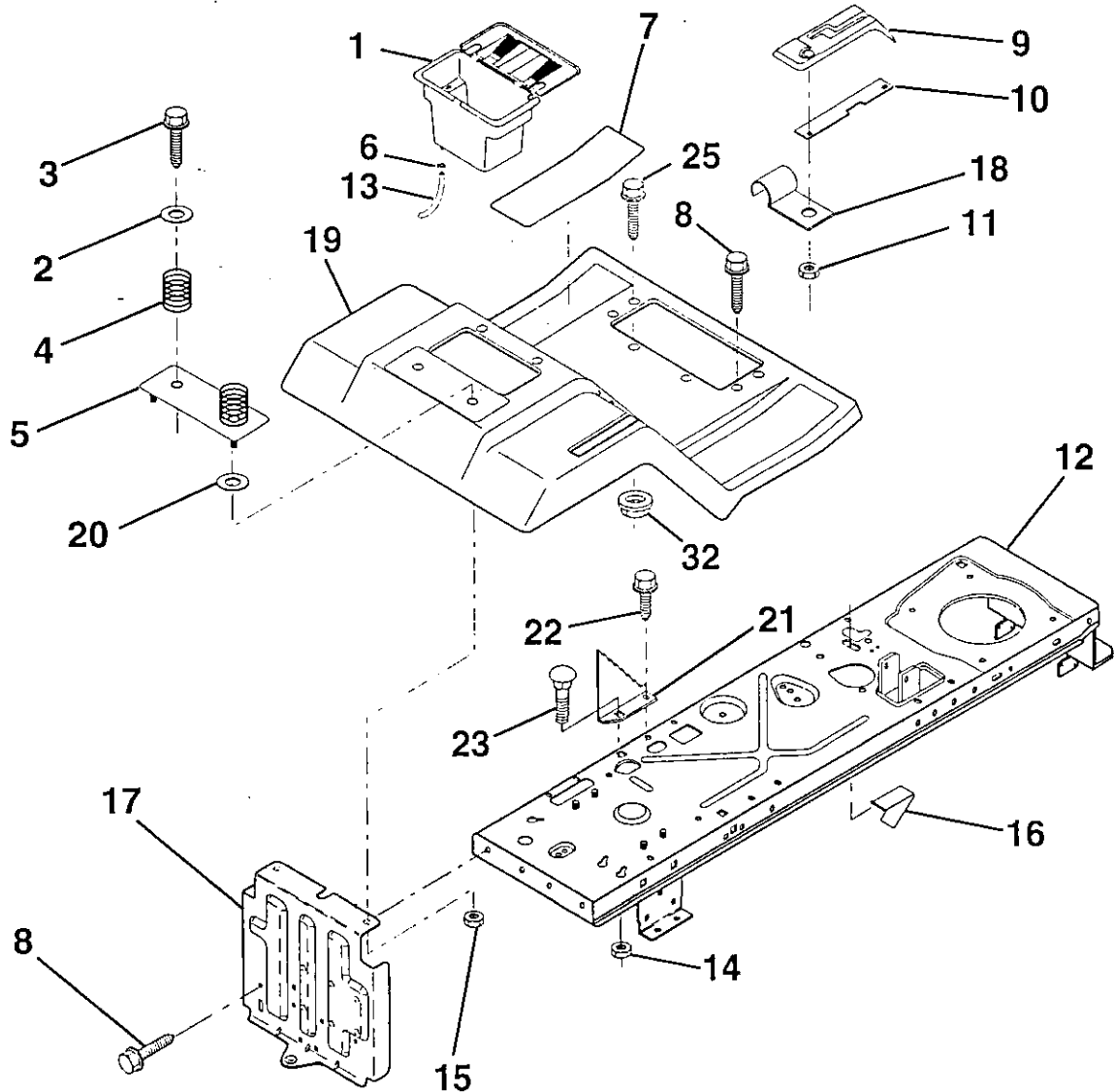
NOTE: All component dimensions given in U.S. inches
1 inch = 25.4 mm

HARDWARE SHOWN LARGER FOR EASIER IDENTIFICATION

REPAIR PARTS

TRACTOR - - MODEL NUMBER 917.252551

FENDER/CHASSIS



KEY NO.	PART NO.	DESCRIPTION
1	144940	Case, Battery
2	19132012	Washer 13/32 x 1-1/4 x 12 Gauge
3	17490612	Screw, Hex Washer Head, Thd. Roll. 3/8-16 x 3/4
4	124181X	Spring, Compression, Seat
5	127115X459	Plate, Battery
6	109596X	Clamp, Hose
7	126700X	Pad, Footrest
8	17490512	Screw, Hex Washer Head, Thd. Roll. 5/16-18 x 3/4
9	126994X	Console, Shift Control
10	139783	Bar, Shift Lock
11	124346X	Nut, Self-Threading 3/16
12	145190	Assembly, Frame
13	109238X	Tube, Battery Drain
14	73680500	Nut, Crownlock 5/16-18

KEY NO.	PART NO.	DESCRIPTION
15	STD541425	Nut, Hex, Keps 1/4-20
16	141736	Switch, Actuator
17	140782	Drawbar
18	126470X	Clip, Insulated
19	140956X459	Fender/Footrest
20	19091413	Washer 9/32 x 7/8 x 13 Gauge
21	140297	Bracket Stop Depth Lr
22	17490508	Screw Thdrol 5/16 - 18 x 1/2
23	STD533107	Bolt RdhdSqnk 5/16 - 18 x 1.25
25	17580520	Scr.-Hx Wsh Thd Rol 5/16 - 18 x 1T
30	146374	Keeper Actuator
31	69180	Nut Lock 10-24
32	73970500	Nut Flang 5/16-18 (Sears Only)

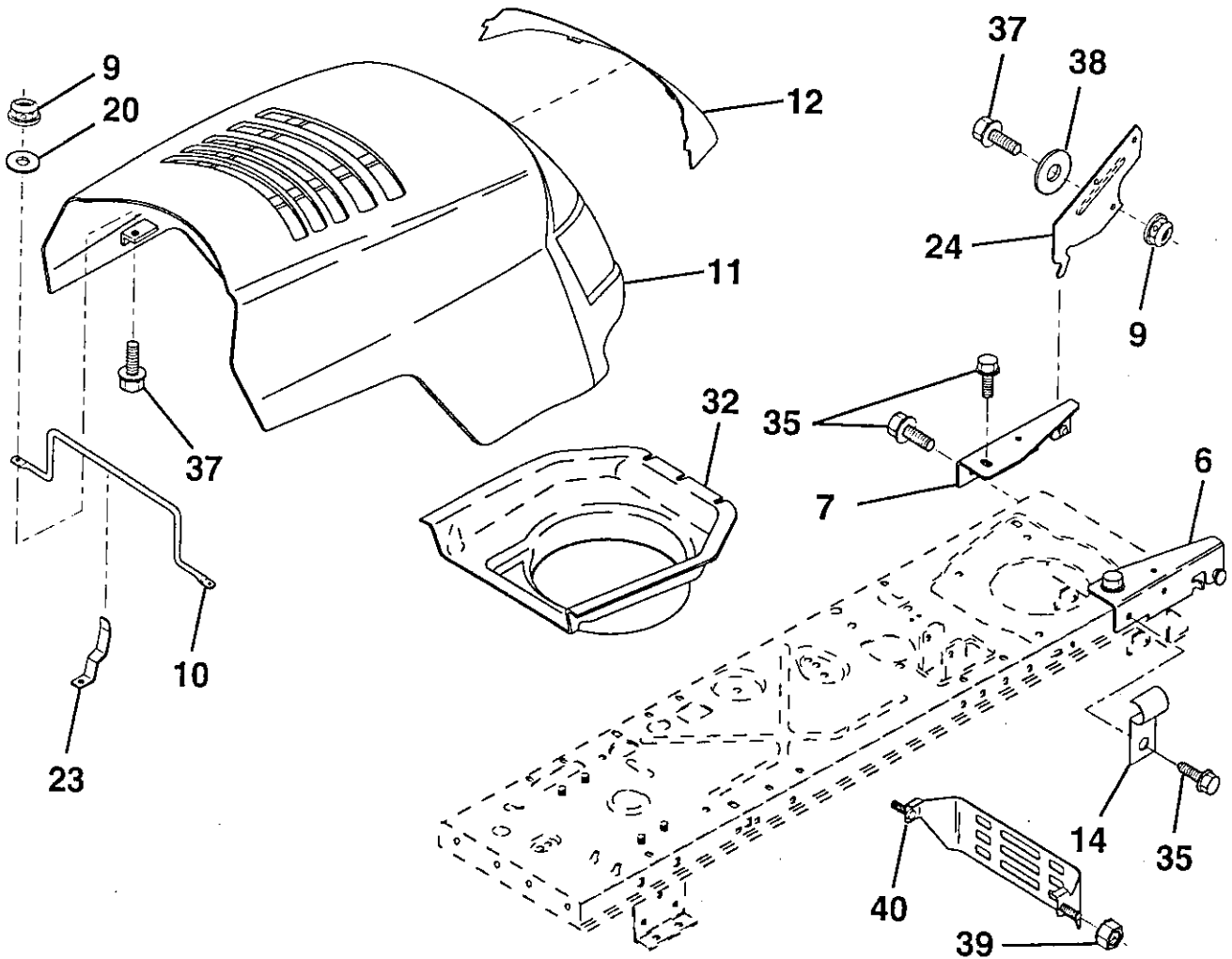
NOTE: All component dimensions given in U.S. inches.
1 inch = 25.4 mm.

HARDWARE SHOWN LARGER FOR EASIER IDENTIFICATION

REPAIR PARTS

TRACTOR - - MODEL NUMBER 917.252551

HOOD



KEY NO.	PART NO.	DESCRIPTION
6	140051	Bracket Asm. Pivot Hood RH
7	140050	Bracket Asm. Pivot Hood LH
9	73800400	Locknut W/Insert 1/4-20
10	141321	Rod Support
11	146921	Hood
12	139298	Lens Bar
14	2751R	Clip Insulated
20	19091016	Washer, Flat 1/4
23	139969	Latch Hood

KEY NO.	PART NO.	DESCRIPTION
24	139158	Bracket Pivot Hood
32	139067	Duct Air Hood
35	17490512	Screw Thdrol 5/16-28 x 3/4
37	74760412	Bolt Fin Hex 1/4-20 x 3/4
38	19092016	Washer
39	73510400	Nut Keps Hex 1/4-20
40	148833	Muffler, Guard

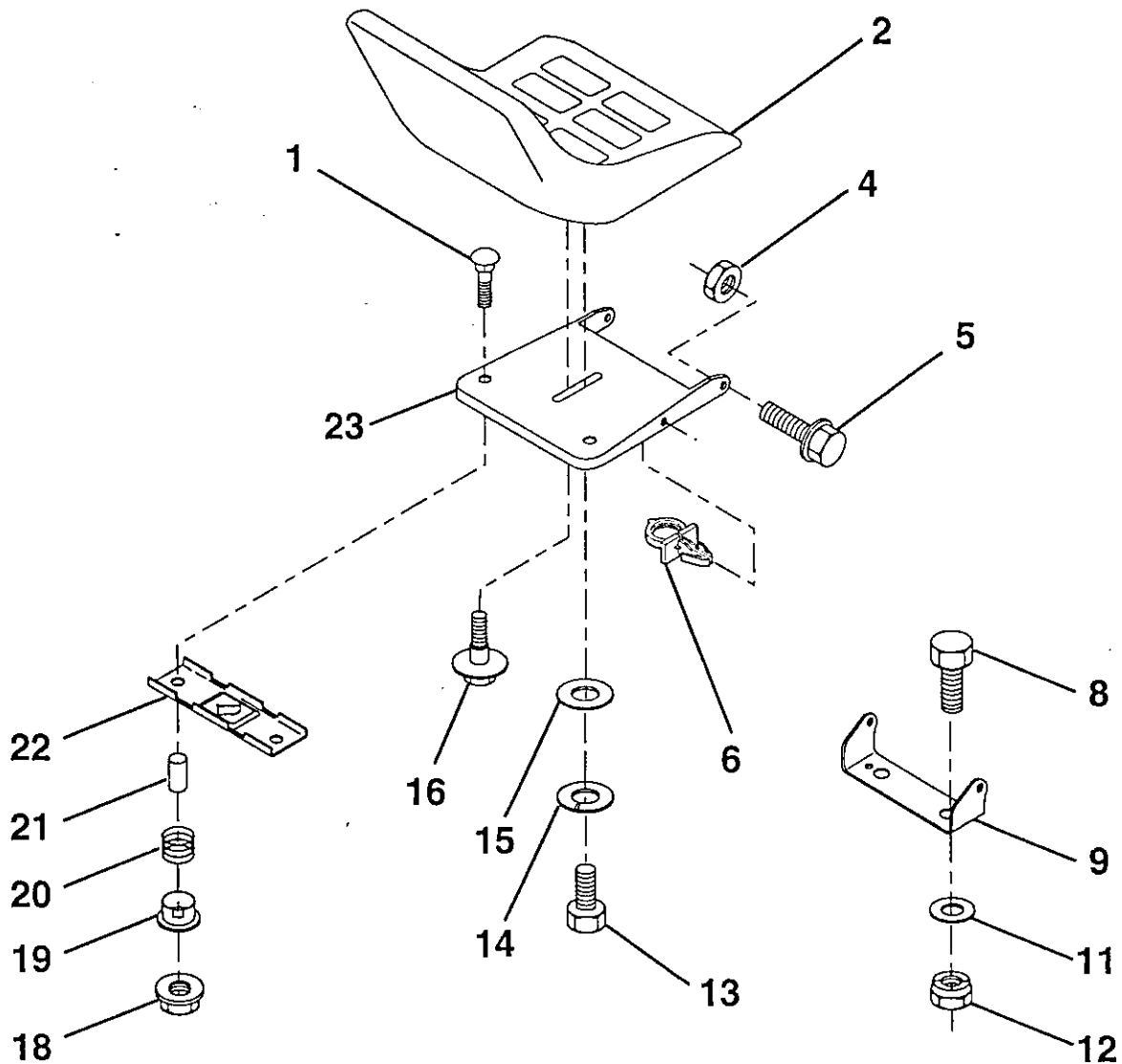
NOTE: All component dimensions given in U.S. inches
1 inch = 25.4 mm

HARDWARE SHOWN LARGER FOR EASIER IDENTIFICATION

REPAIR PARTS

TRACTOR - - MODEL NUMBER 917.252551

SEAT



KEY NO.	PART NO.	DESCRIPTION
1	72050411	Bolt, Carriage 1/4-20 x 1-3/8
2	140123	Seat
4	STD541431	Nut, Lock Hex W/Ins. 5/16-18
5	139888	Bolt, Shld. 5/16-18
6	145006	Clip, Push-In
8	STD523710	Bolt, Hex, Fin 3/8-16 UNC x 1
9	140551	Bracket, Pivot, Seat
11	19133210	Washer 13/32 x 2 x 10 Gauge
12	STD541437	Nut, Lock Hex W/Wsh 3/8-16
13	74780814	Bolt, Fin Hex 1/2 - 13 x 7/8 Gr. 5
14	STD551125	Washer Lock Hvy HLCL Spr. 1/2

KEY NO.	PART NO.	DESCRIPTION
15	19171912	Washer 17/32 x 13/16 x 12 Gauge
16	127018X	Bolt, Shoulder
18	123976X	Locknut, Hex, Large, Flange
19	121248X	Bushing, Snap
20	121250X	Spring, Compression
21	134300	Spacer, Split, Large .28 ld. x .96
22	121246X	Bracket, Switch, Mounting
23	140552	Pan, Seat

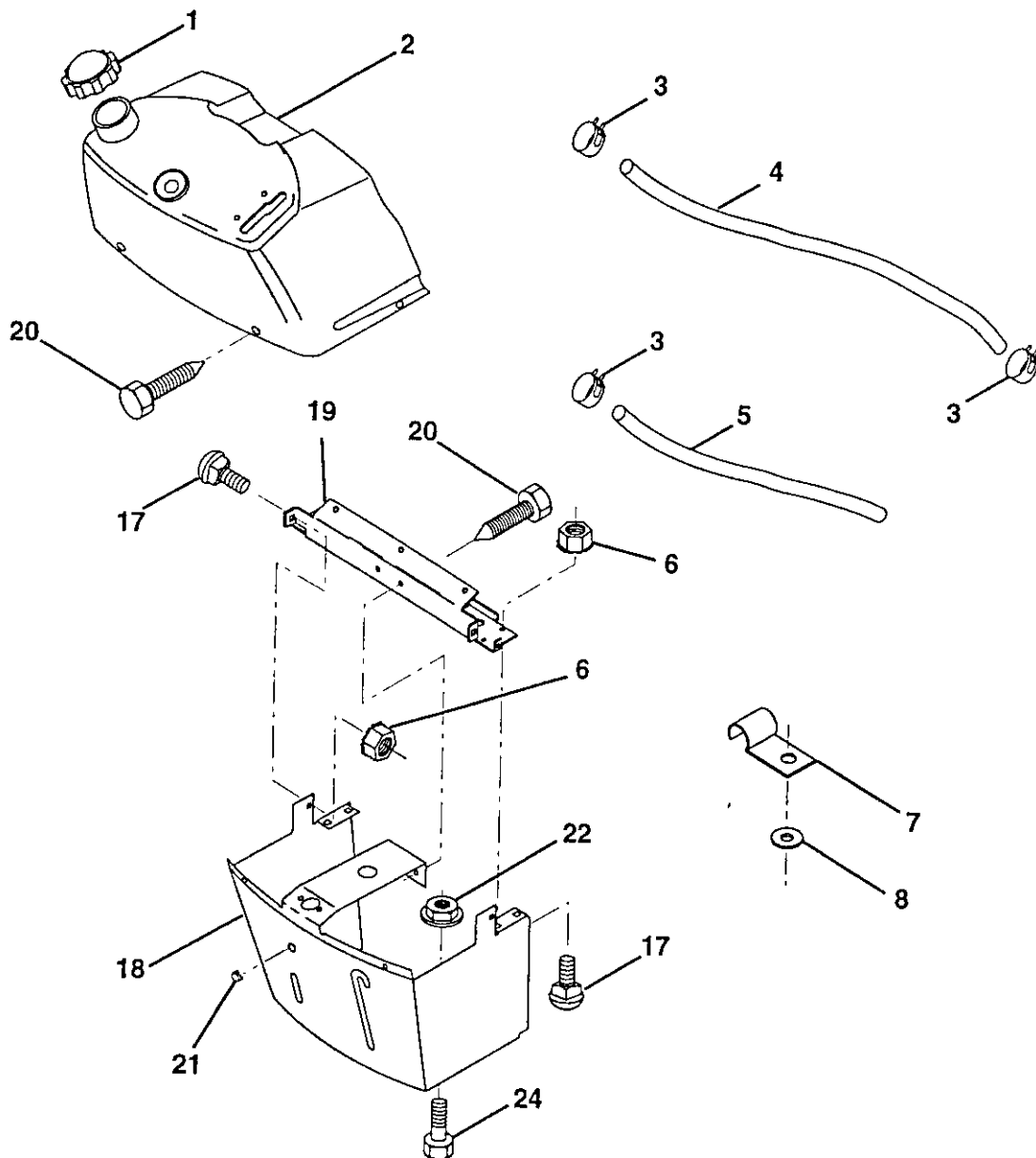
NOTE: All component dimensions given in U.S. inches
1 inch = 25.4 mm.

HARDWARE SHOWN LARGER FOR EASIER IDENTIFICATION

REPAIR PARTS

TRACTOR - - MODEL NUMBER 917.252551

DASH



KEY NO.	PART NO.	DESCRIPTION
1	141523	Cap, Fuel
2	138392	Assembly, Dash & Fuel Tank
3	123487X	Clamp, Hose
4	8544R	Line, Fuel
5	8548R	Line, Fuel
6	73640400	Nut, Hex, Keps 1/4-20
7	2751R	Clip, Fuel Line
8	STD551025	Washer 9/32 x 3/4 x 16 Gauge
17	STD532505	Bolt, Carriage 1/4-20 x 1/2 Grade 5

KEY NO.	PART NO.	DESCRIPTION
18	131886	Support Assembly, Dash
19	134744	Brace, Cross
20	17060408	Screw, Tap 1/4-20 x 1/2
21	134014	Plug, Dome
22	73970500	Nut, Lock, Hex Flange
24	17580520	Screw, Hex Head, Thdrol 5/16-18 x 1-1/4

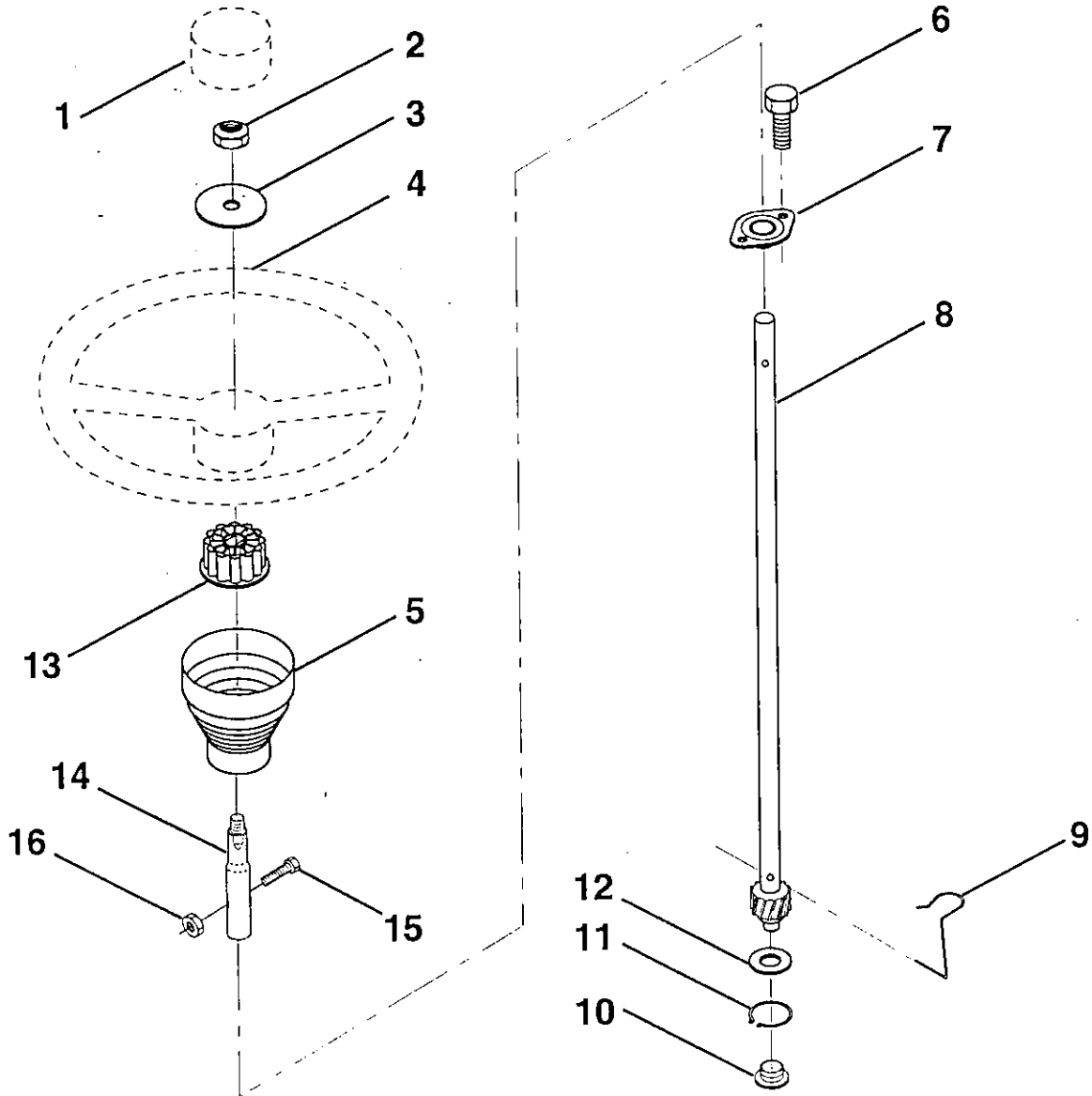
NOTE: All component dimensions given in U.S. inches.
1 inch = 25.4 mm.

HARDWARE SHOWN LARGER FOR EASIER IDENTIFICATION

REPAIR PARTS

TRACTOR -- MODEL NUMBER 917.252551

STEERING WHEEL



KEY NO.	PART NO.	DESCRIPTION
1	126805X	Insert, Steering Wheel
2	7810H	Locknut 3/8-24 UNF
3	19133808	Washer 13/32 x 2-3/8 x 8 Ga.
4	121472X	Wheel, Steering
5	121897X	Sleeve, Steering
6	STD611005	Screw, Hex Self-Tapping #10-16 x 1/2
7	102803X	Bushing, Steering
8	147391	Shaft, Steering
9	124210X	Clip, Steering

KEY NO.	PART NO.	DESCRIPTION
10	123438X	Bushing, Lower, Steering
11	12000045	Ring, Retaining
12	STD551062	Washer 21/32 x 1 x 16 Ga.
13	104820X	Adaptor, Steering Wheel
14	147392	Extension, Steering Shaft
15	74780520	Bolt 5/16-18 x 1-1/4
16	73800500	Nut 5/16-18 UNC

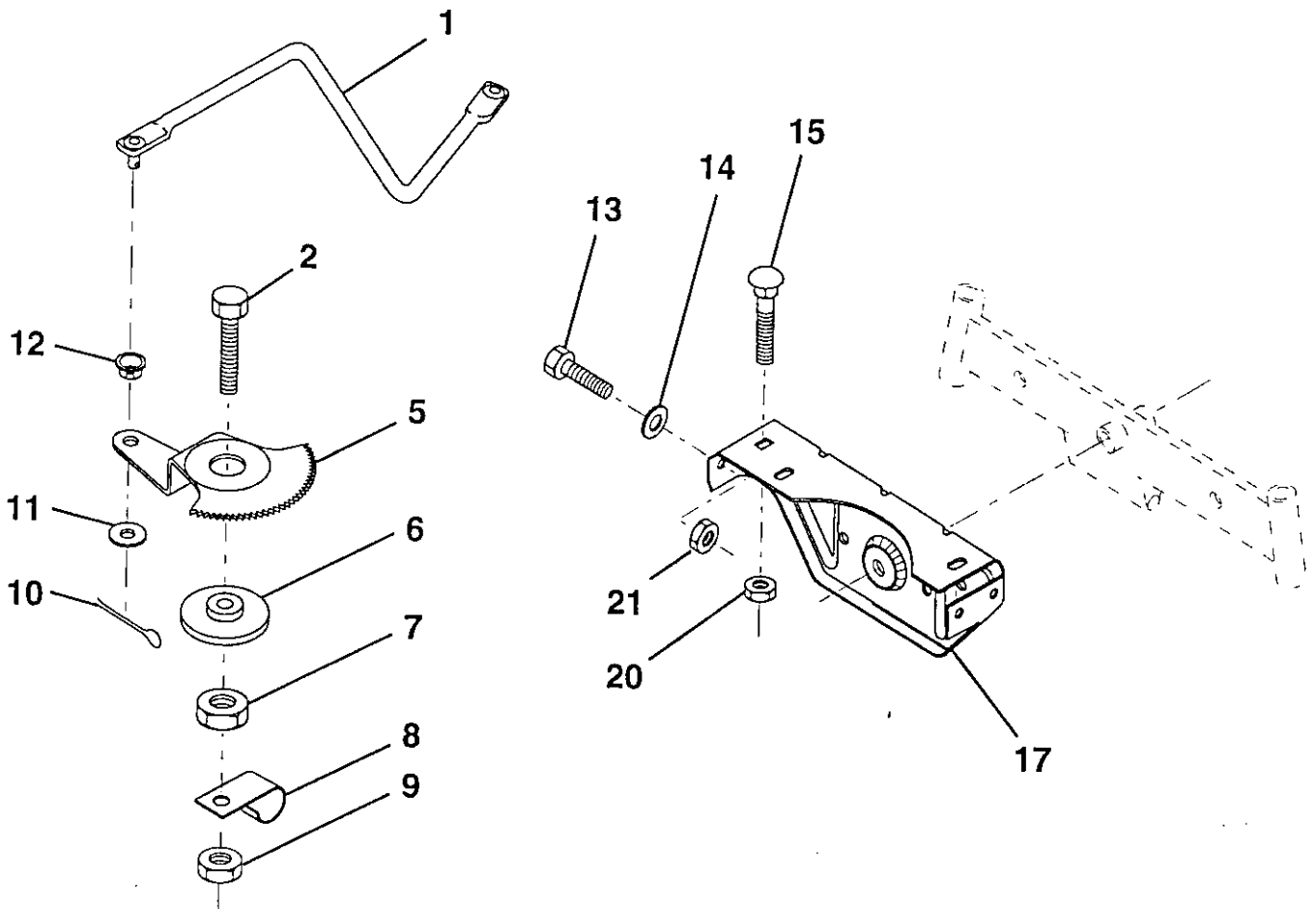
NOTE: All component dimensions given in U.S. inches
1 inch = 25.4 mm.

HARDWARE SHOWN LARGER FOR EASIER IDENTIFICATION

REPAIR PARTS

TRACTOR - - MODEL NUMBER 917.252551

SECTOR GEAR / AXLE SUPPORT



KEY NO.	PART NO.	DESCRIPTION
1	132566	Link, Drag
2	74780828	Bolt, Hex, Fin 1/2-13 x 1-3/4
5	121926X	Gear, Sector
6	121927X	Bushing
7	73030800	Nut, Hvy, Hex, Top Lock 1/2-13 UNC
8	126472X	Clip, Wire
9	STD541437	Nut, Crownlock 1/2-13
10	STD561210	Pin, Cotter 1/8 x 3/4
11	STD551037	Washer 13/32 x 13/16 x 16 Ga.

KEY NO.	PART NO.	DESCRIPTION
12	126847X	Bushing
13	STD523107	Bolt, Hex 5/16-18 x 3/4
14	19111416	Washer 11/32 x 7/8 x 16 Ga.
15	STD533707	Bolt, Carriage 3/8-16 UNC x 3/4
17	137096	Support, Front Axle
20	STD541437	Nut, Crownlock 3/8-16
21	STD541431	Nut, Crownlock 5/16-18

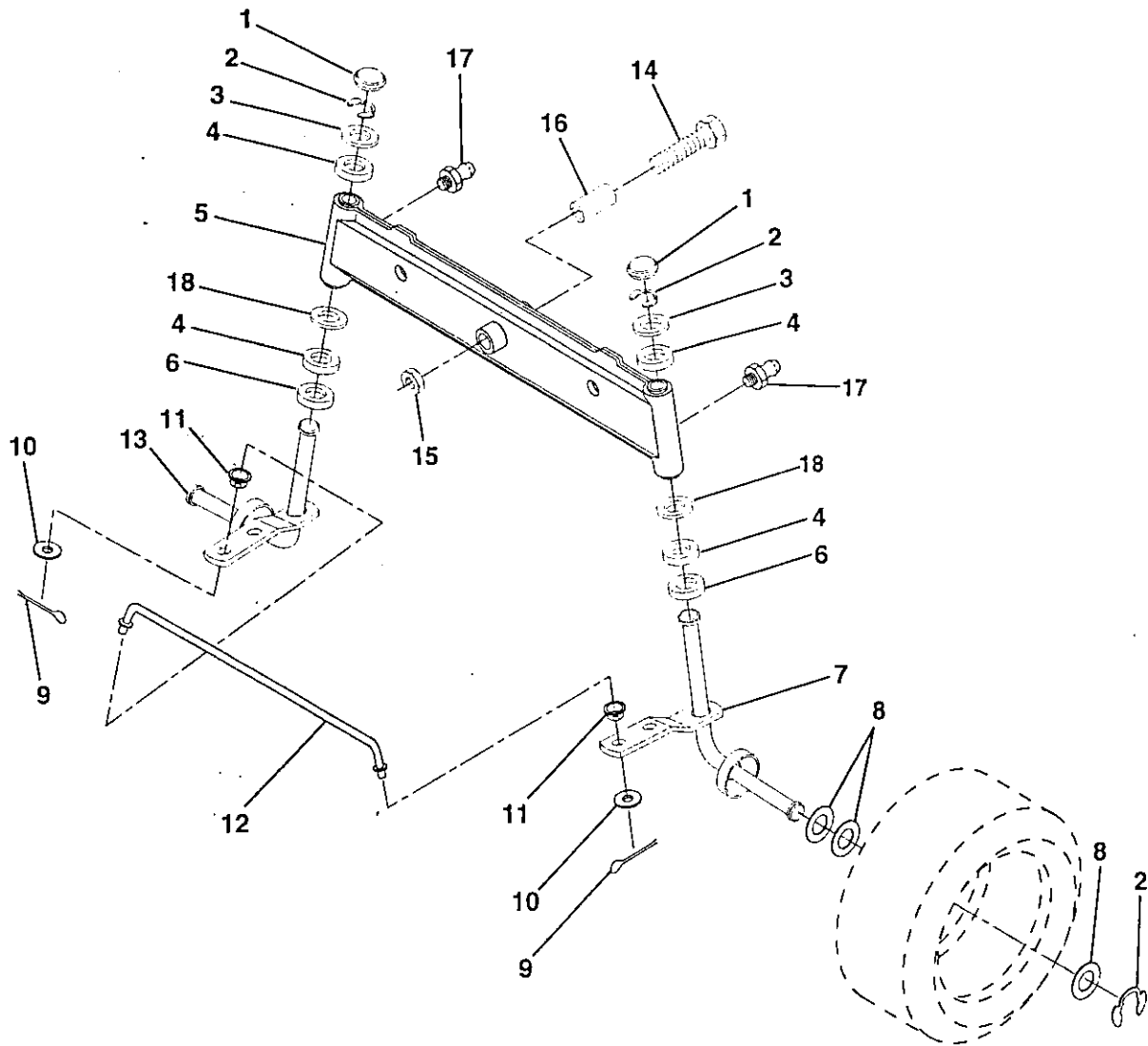
NOTE: All component dimensions given in U.S. inches
1 inch = 25.4 mm.

HARDWARE SHOWN LARGER FOR EASIER IDENTIFICATION

REPAIR PARTS

TRACTOR - - MODEL NUMBER 917.252551

FRONT AXLE



KEY NO.	PART NO.	DESCRIPTION
1	121232X	Cap, Spindle
2	12000029	Ring, Klip
3	121748X	Washer 25/32 x 1-5/8 x 16 Gauge
4	3366R	Bearing
5	142033	Axle, Front
6	6266H	Bearing, Thrust
7	137062	Spindle Assembly, R.H.
8	121749X	Washer 25/32 x 1-1/4 x 16 Gauge
9	STD561210	Pin, Cotter 1/8 x 3/4
10	STD551037	Washer 13/32 x 13/16 x 16 Gauge

KEY NO.	PART NO.	DESCRIPTION
11	126847X	Bushing
12	130465	Rod, Tie
13	137061	Spindle Assembly, L.H.
14	74011056	Bolt, Hex 5/8-11 x 3-1/2
15	73901000	Nut, Lock Flange 5/8-11
16	110438X	Spacer
17	6855M	Fitting, Grease
18	19272016	Washer 27/32 x 1-1/4 x 16 Ga.

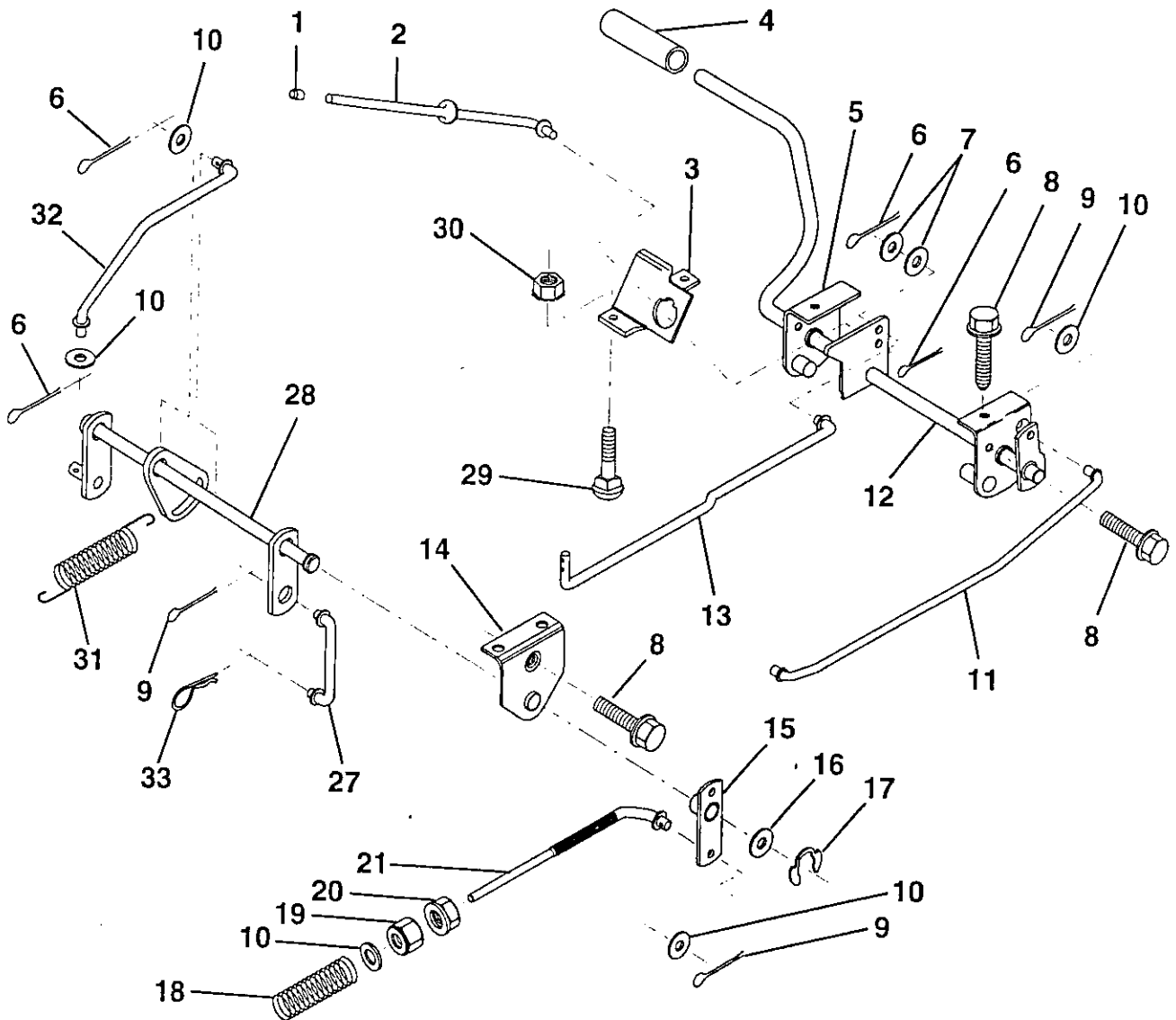
NOTE: All component dimensions given in U.S. inches
1 inch = 25.4 mm.

HARDWARE SHOWN LARGER FOR EASIER IDENTIFICATION

REPAIR PARTS

TRACTOR - - MODEL NUMBER 917.252551

BRAKE / REAR MOWER LIFT ASSEMBLY



KEY NO.	PART NO.	DESCRIPTION	KEY NO.	PART NO.	DESCRIPTION
1	124236X	Cap, Parking Brake	16	19251816	Washer 25/32 x 1-1/8 x 16 Gauge
2	123436X	Rod, Parking Brake	17	12000034	Ring, Klip
3	123437X	Bracket, Parking Brake	18	106888X	Spring, Brake Rod
4	8883R	Cover, Pedal	19	STD541437	Nut, Lock Hex W/Wsh 3/8-16
5	132205	Bracket, Pedal, Clutch LH	20	STD541237	Nut, Hex, Jam 3/8-16 UNC
6	STD560907	Pin, Cotter 3/32 x 3/4	21	131460	Rod, Rear Brake
7	STD551037	Washer 13/32 x 5/8 x 16 Gauge	27	136780	Link, Lift Rear
8	17490508	Screw, Hex, Thdrol 5/16-18 x 1/2	28	140777	Assembly, Rear Mower Lift
9	STD561210	Pin, Cotter 1/8 x 3/4	29	STD533107	Bolt, Carriage 5/16-18 UNC x 3/4
10	STD551037	Washer 13/32 x 13/16 x 16 Gauge	30	STD541431	Nut, Keps 5/16-18 UNC
11	123543X	Rod, Front Brake	31	133095	Spring Counter Balance
12	139934	Assembly, Clutch/Brake Pedal	32	133721	Link Lever Lift
13	123394X	Rod, Clutch	33	4939M	Retainer Spring
14	121978X	Bracket, Lift, Shaft			
15	133332	Assembly, Brake, Pivot, Arm			

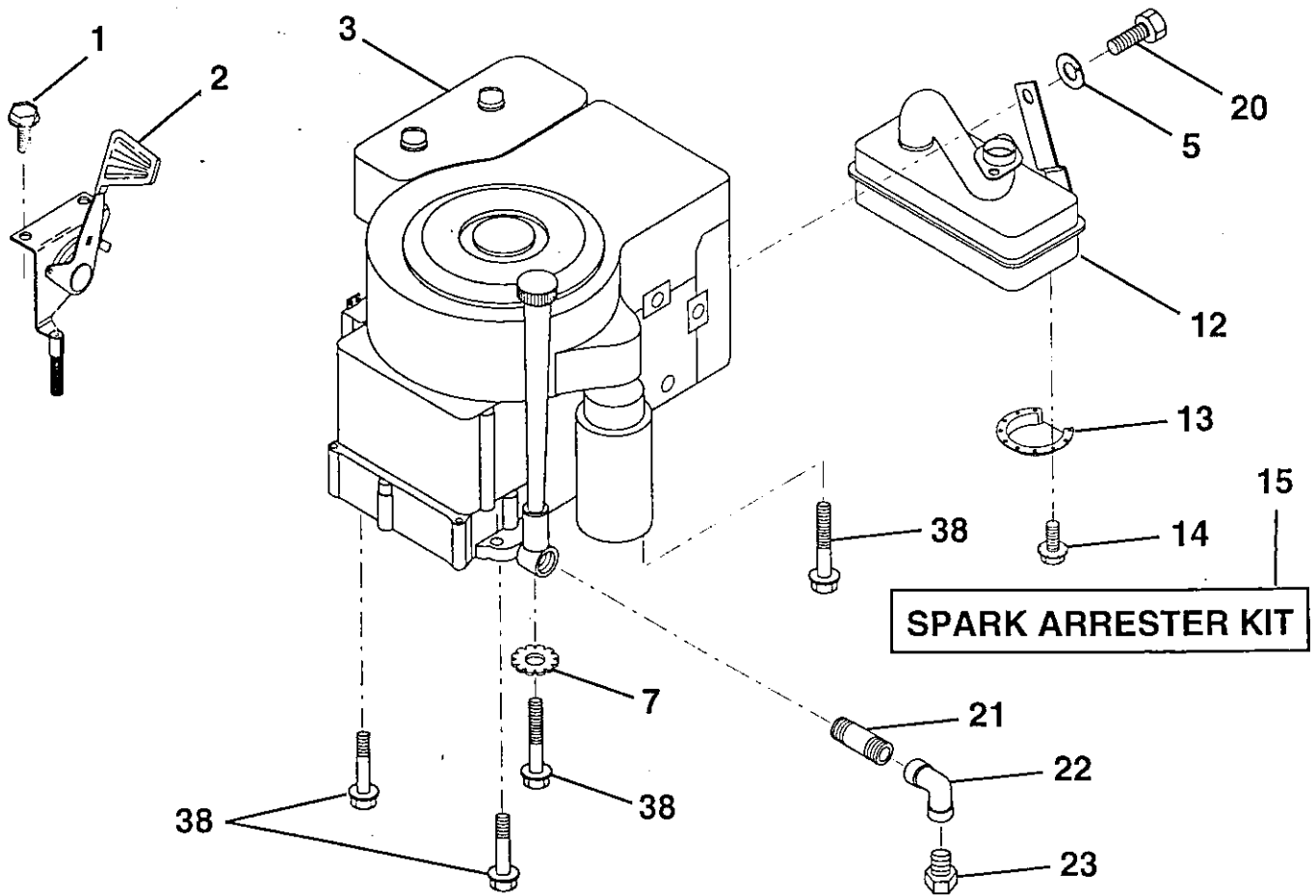
NOTE: All component dimensions given in U.S. inches
1 inch = 25.4 mm.

HARDWARE SHOWN LARGER FOR EASIER IDENTIFICATION

REPAIR PARTS

TRACTOR - - MODEL NUMBER 917.252551

ENGINE / THROTTLE



KEY NO.	PART NO.	DESCRIPTION
1	17060408	Screw, Hex, Thdcut 1/4-20 x 1/2
2	146346	Control, Throttle
3	137510	Engine, Model Kohl LT14 PS1452
5	STD551131	Washer, Lock, Hvy Hlcl Spring 5/16
7	STD551237	Washer, Lock, Ext. Tooth 3/8
12	138149	Muffler
13	101326L	Deflector Muffler
14	17030808	Screw, Spider
15	137180	Kit, Spark Arrester (Optional)

KEY NO.	PART NO.	DESCRIPTION
19	2751R	Clip, Fuel Line
20	74760508	Bolt, Hex, Head 5/16-18 x 1/2
21	13280328	Nipple, Pipe
22	13200300	Elbow Std 90 Degree
23	-----	Order from Eng. Mfg.
38	M740108025	Bolt, Hex
39	73510400	Nut Keps Hex 1/4-20

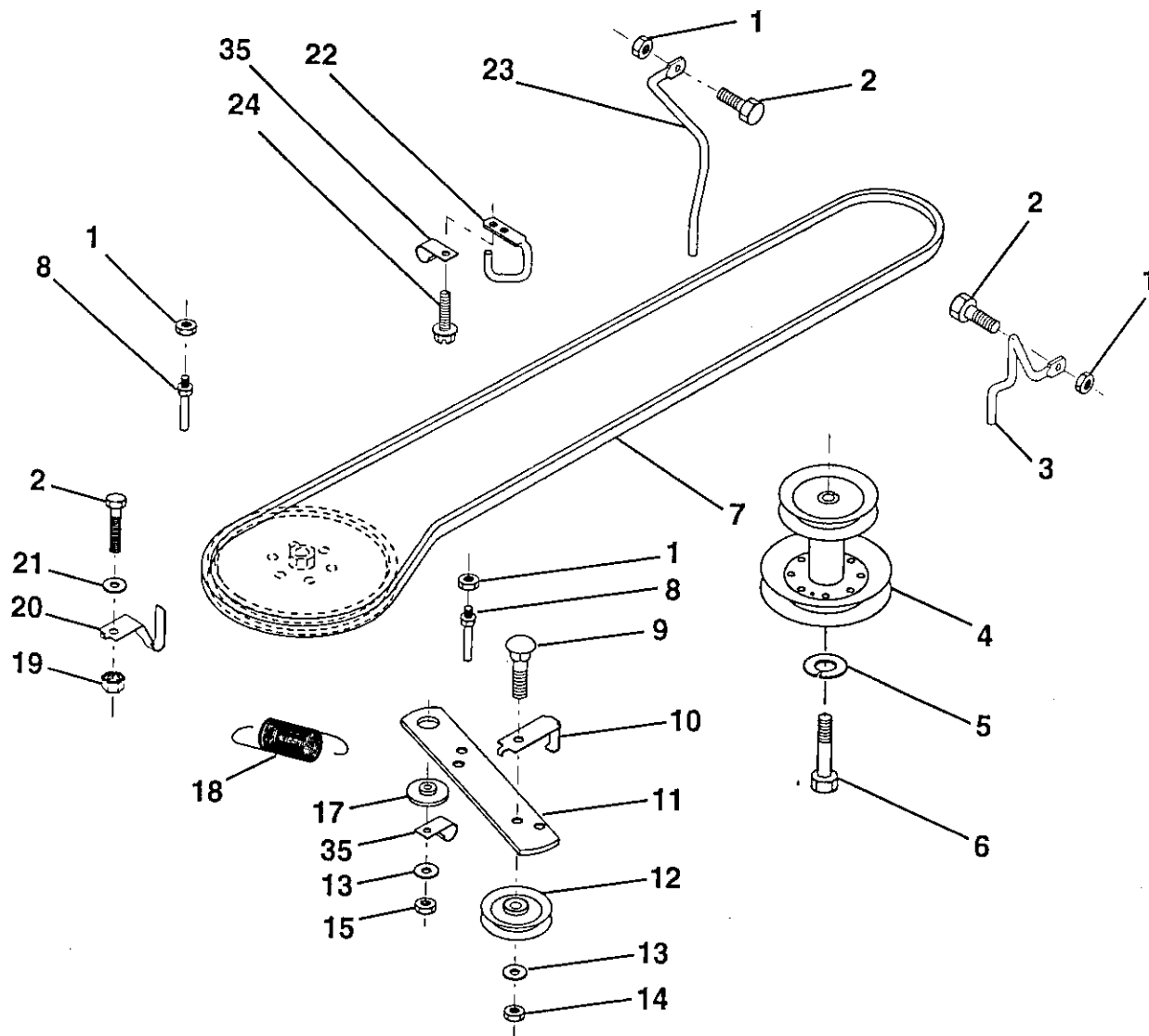
NOTE: All component dimensions given in U.S. inches.
1 inch = 25.4 mm

HARDWARE SHOWN LARGER FOR EASIER IDENTIFICATION

REPAIR PARTS

TRACTOR - - MODEL NUMBER 917.252551

GROUND DRIVE



KEY NO.	PART NO.	DESCRIPTION
1	STD541431	Nut, Lock Hex W/Ins 5/16-18
2	STD523107	Bolt, Hex 5/16-18 UNC x 3/4
3	141341	Keeper, Mower Drive Belt, Engine, R.H.
4	138029	Pulley, Engine
5	STD551143	Washer, Lock, Heavy Helical Spring 7/16
6	M747810075	Bolt, Hex, 7/16-20 x 2-3/4 Grade 5
7	124525X	Traction, V-Belt Drive
8	123405X	Keeper, T/A Ground Drive Belt
9	STD533715	Bolt, Carriage 3/8-16 UNC x 1-1/2
10	123396X	Keeper, Ground Drive Belt, Idler
11	140911	Arm, Ground Drive Clutch
12	123674X	Idler, Flat

KEY NO.	PART NO.	DESCRIPTION
13	STD551037	Washer 13/32 x 13/16 x 16 Gauge
14	73930600	Nut, Centerlock 3/8-16 UNC
15	73680600	Nut, Lock Hex W/Wsh 3/8-16
17	122052X	Spacer, Retainer
18	131459	Spring, Extension
19	STD541431	Nut, Keps 5/16-18 UNC
20	139919	Keeper, T/A Ground Drive Belt
21	19111016	Washer 11/32 x 5/8 x 16 Gauge
22	123404X	Keeper, Ground Drive Belt, Frame
23	146792	Keeper, Mower Drive Belt, L.H.
24	17720408	Screw Thdcut 14-20 x 1/2
35	126472X	Clip, Insulated

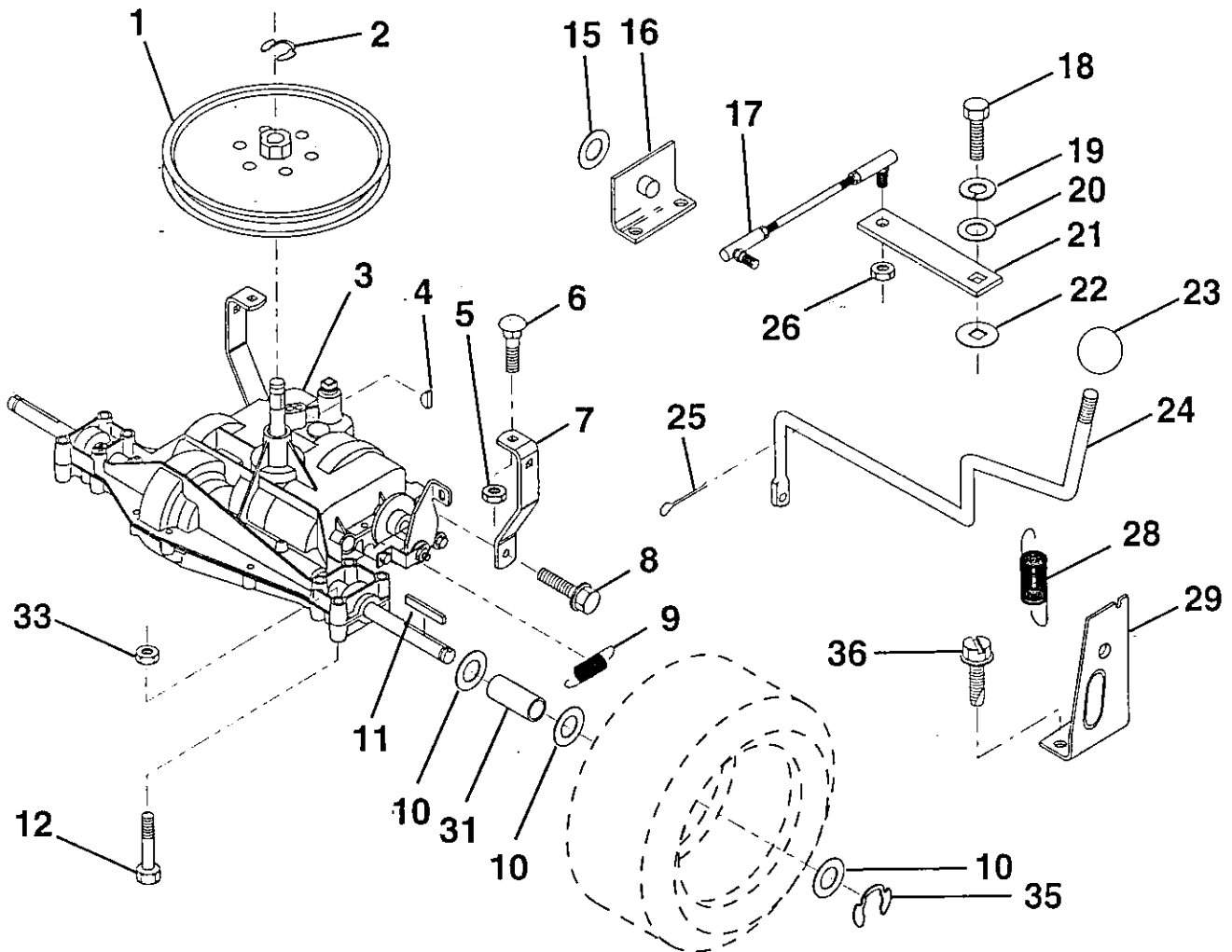
NOTE: All component dimensions given in U.S. inches.
1 inch = 25.4 mm

HARDWARE SHOWN LARGER FOR EASIER IDENTIFICATION

REPAIR PARTS

TRACTOR - - MODEL NUMBER 917.252551

TRANSAXLE



KEY NO.	PART NO.	DESCRIPTION
1	123385X	Pulley
2	12000028	Ring, Retainer
3	142602	Transaxle Model Number 4360-78
4	2228M	Key, Woodruff #9
5	STD541431	Nut, Lock Hex 5/16-18
6	STD533107	Bolt, Carriage 5/16-18 UNC x 3/4
7	123378X	Strap, Torque
8	17490512	Screw 5/16-18 x 3/4
9	146682	Spring, Brake
10	121749X	Washer 25/32 x 1-1/4 x 16 Gauge
11	123583X	Key, Square
12	STD523727	Bolt Fin Hex 5/16-18 x 2-1/2
15	STD551050	Washer 17/32 x 16 Ga.
16	124600X	Support, Handle Shift
17	123632X	Link, Shift
18	74550412	Bolt, Hex, Fin. 1/4-28 UNF x 3/4 Grade 8

KEY NO.	PART NO.	DESCRIPTION
19	STD551125	Washer, Lock 1/4
20	19091210	Washer 9/32 x 3/4 x 10 Gauge
21	123484X	Arm, Shift
22	105701X	Washer, Shift Plate
23	130564	Knob, Deluxe
24	130714	Rod, Shift
25	STD561210	Pin, Cotter 1/8 x 1
26	STD541531	Nut, Hex, Nylon 5/16-24 UNF
28	128085	Spring, Extension
29	128084	Support, Handle, Shift, R.H.
31	109502X	Spacer, Split
33	73680600	Nut, Crownlock 3/8-16 UNC
35	12000001	E-Ring
36	17720408	Screw Thdcut

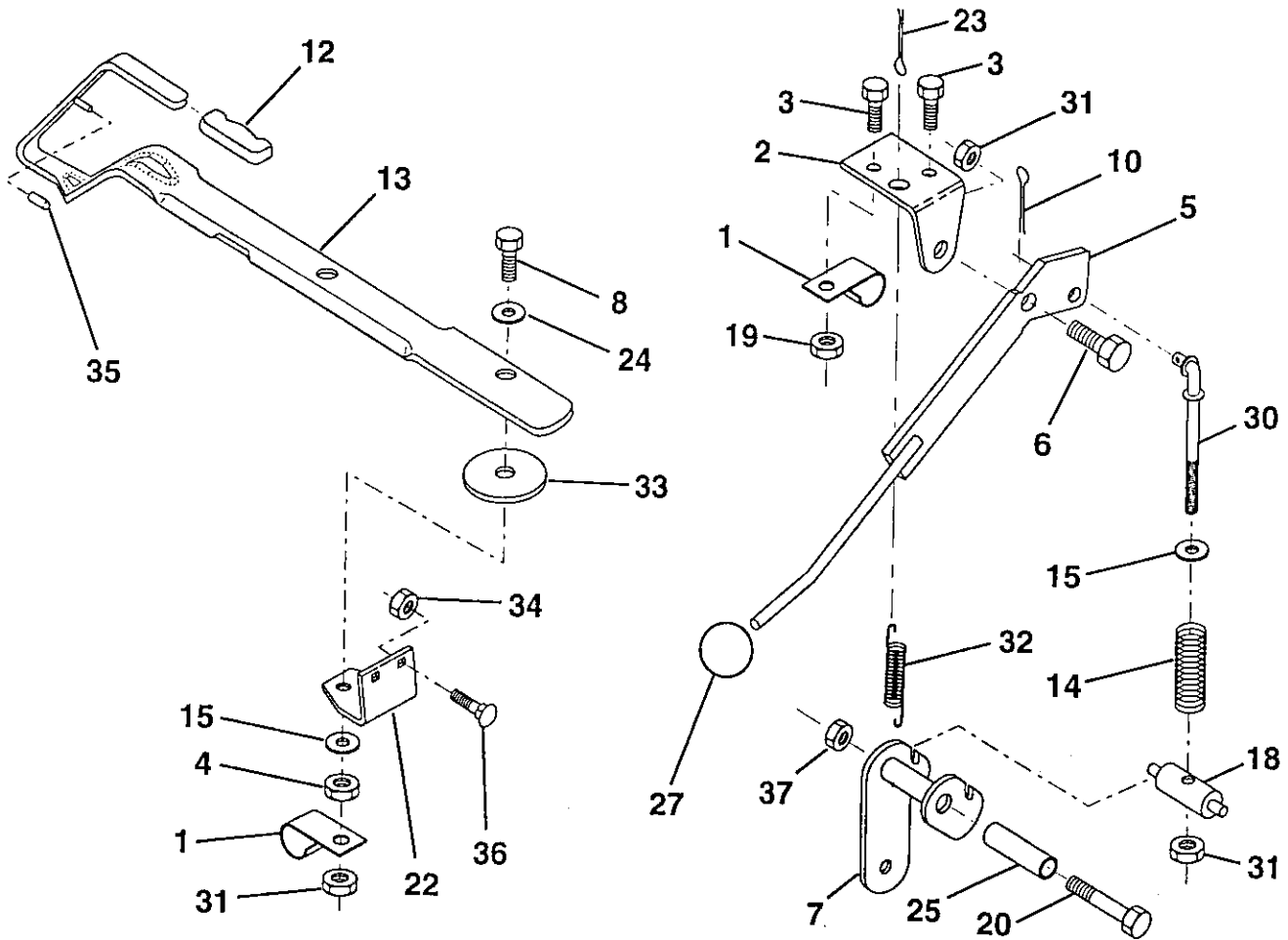
NOTE: All component dimensions given in U.S. inches.
1 inch = 25.4 mm.

HARDWARE SHOWN LARGER FOR EASIER IDENTIFICATION

REPAIR PARTS

TRACTOR - - MODEL NUMBER 917.252551

MOWER LIFT LEVER



KEY NO.	PART NO.	DESCRIPTION
1	126470X	Clip, Insulated
2	122018X	Bracket, Mower Clutch
3	71110408	Bolt, Hex, Fin 1/4-20 UNC x 1/2 Grade 5
4	STD541437	Nut, Lock Hex W/Wsh 3/8-16
5	145187	Assembly, Clutch Lever
6	106451X	Bolt, Shoulder
7	141435	Assembly, Mower Clutch Arm
8	74930624	Bolt, Hex 3/8-16 x 1-1/2
10	STD560907	Pin, Cotter 1/8 x 3/4
12	122027X	Handle, Lift Lever
13	136658	Lever, Lift
14	133939	Spring, Compression, Clutch
15	19131616	Washer 13/32 x 1 x 16 Gauge
18	135107	Trunnion
19	73680400	Nut, Crownlock 1/4-20

KEY NO.	PART NO.	DESCRIPTION
20	STD523727	Bolt, Hex, Fin. 3/8-16 UNC x 2-3/4
22	132561	Bracket, Lift Lever
23	STD561210	Pin, Cotter 3/32 x 3/4
24	7672J	Washer 17/32 x 1 x 16 Gauge
25	121933X	Tube, Spacer
27	106932X	Knob
30	135039	Rod, Tension, Clutch
31	STD541437	Nut, Lock Hex W/Wsh 3/8-16
32	133435	Spring, Extension, Return
33	62333	Washer
34	STD541431	Nut, Crownlock 5/16-18
35	133603	Cap, Vinyl, Red
36	STD533107	Bolt, Carriage 5/16-18 x 3/4
37	STD541437	Nut, Lock Hex W/Wsh 3/8-16

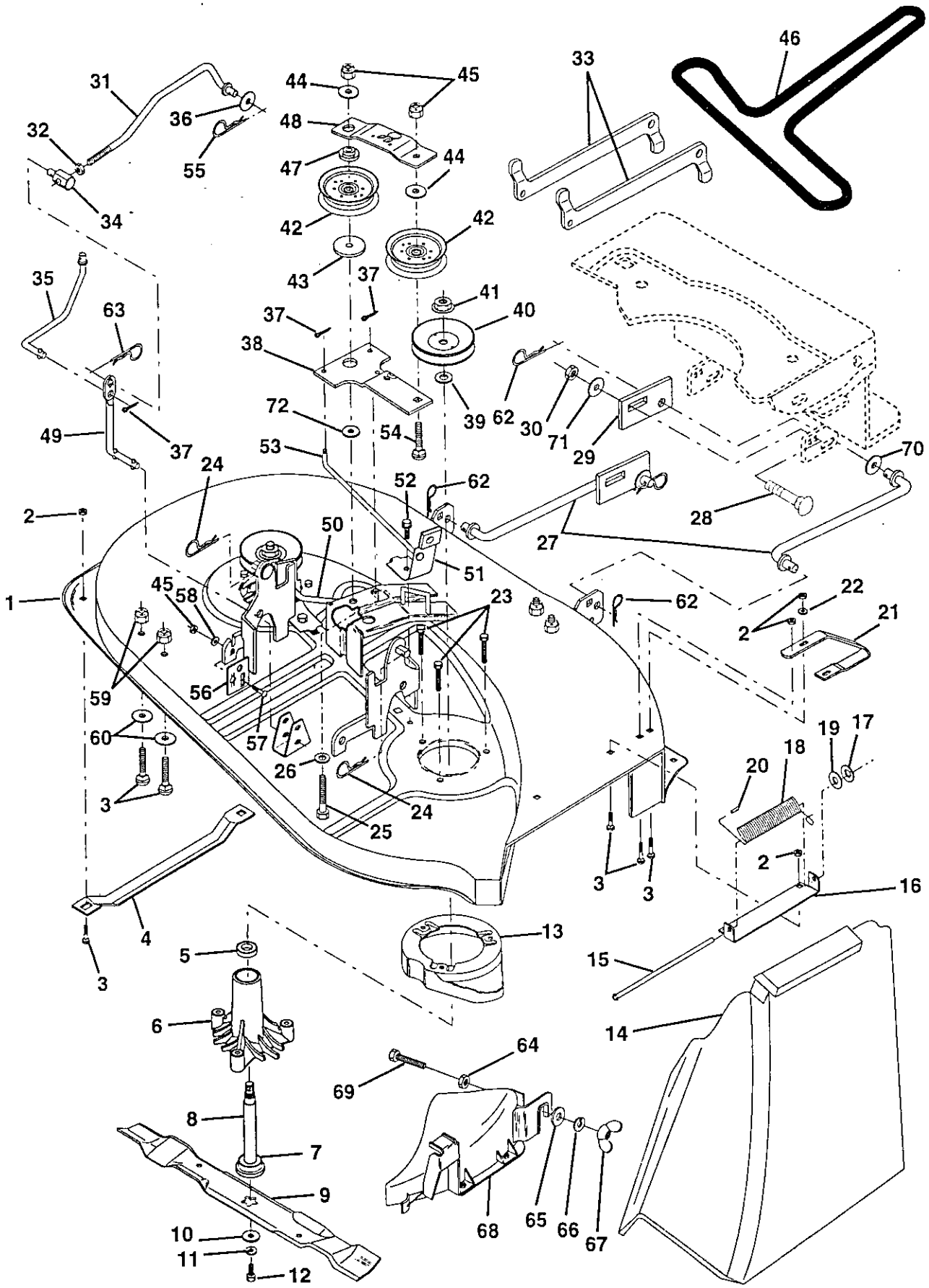
NOTE: All component dimensions given in U.S. inches.
1 inch = 25.4 mm.

HARDWARE SHOWN LARGER FOR EASIER IDENTIFICATION

REPAIR PARTS

TRACTOR -- MODEL NUMBER 917.252551

MOWER DECK



REPAIR PARTS

TRACTOR - - MODEL NUMBER 917.252551

MOWER DECK

KEY NO.	PART NO.	DESCRIPTION	KEY NO.	PART NO.	DESCRIPTION
1	142830	Mower Deck Assembly	39	129963	Washer .150 Thick
2	STD541431	Nut, Crownlock 5/16-18 x 3/4	40	129206	Pulley, Mandrel
3	STD533107	Bolt, Carriage 5/16-18 x 3/4	41	137266	Nut, Flangelock 9/16
4	7631J	Runner, L.H.	42	131494	Pulley, Flat Idler
5	110485X	Bearing	43	122052X	Spacer, Retainer
6	128774	Housing, Mandrel	44	19131612	Washer 13/32 x 1 x 12 Gauge
7	129895	Bearing	45	STD541437	Nut, Crownlock 3/8-16
8	137645	Shaft and Bearing Assembly, Mandrel (Includes Key Number 7)	46	126520X	Belt
9	134148	Blade, 38" Mulching	47	133502	Spacer, Idler Arm
10	140296	Washer, Hardened	48	133503	Stiffener, Idler Arm
11	STD551137	Washer, Lock 3/8	49	133551	Rod, Pivot
12	850857	Bolt, Hex 3/8-24 x 1-1/4 Grade 8	50	131289	Rod, Brake, L.H.
13	140329	Stripper, Mower, Vented	51	130840	Brake Assembly
14	106736X	Shield, Deflector	52	17490512	Screw, Hex Washer Head, Thd., Roll. 5/16-18 x 3/4
15	106735X	Rod, Hinge	53	131288	Rod, Brake, R.H.
16	137607	Bracket Assembly, Deflector	54	STD533717	Bolt, Carriage 3/8-16 x 1-3/4 Gr. 5
17	110452X	Pushnut	55	4921H	Spring, Retainer
18	123713X	Spring, Deflector	56	136782	Plate Adj. Link Rear LH
19	19111016	Washer 11/32 x 5/8 x 16 Gauge	57	STD533710	Bolt Rdhd Sqnk 3/8-16 Unc x 1
20	105304X	Cap, Sleeve	58	19131212	Washer 13/32 x 3/4 x 12 Ga.
21	128772	Runner, R.H.	59	STD541431	Nut, Crownlock 5/16-18
22	19111216	Washer 11/32 x 3/4 x 16 Gauge	60	19111112	Washer 11/32 x 11/16 x 16 Ga.
23	138776	Screw Thdrol Hex Head	62	3146R	Retainer Spring
24	4939M	Retainer, Spring	63	4497H	Spring, Retainer
25	74600636	Bolt, Carriage 3/8-16 x 2-1/4	64	STD541437	Nut, Crownlock
26	19131612	Washer 13/32 x 1 x 12 Gauge	65	19132016	Washer 13/32 x 1-1/4 x 16
27	139756	Link Assembly, Front	66	STD551137	Washer Lock Hvy
28	STD533710	Bolt, Rdhd Sqnk 3/8 - 16 x 1	67	135651	Nut Wing
29	139757	Plate Slide Link	68	132803	Cover Asm. Mulching
30	STD541437	Nut, Lock Hex w/Washer 1/2-13 UNC	69	74930620	Bolt 3/8-16 x 1-1/4
31	140915	Clutch Rod, Primary	70	19162016	Washer 1/2 x 1-1/4 x 16 Ga.
32	STD541237	Nut, Hex, Jam 3/8-16	71	19131610	Washer Flat 13/32 x 1 x 10 Ga.
33	132559	Arm, Suspension, Rear	72	133943	Washer Hardened
34	133604	Trunnion 3/8-16	--	142862	Mower Deck, Complete
35	132554	Clutch Rod, Secondary	--	130794	Mandrel Assembly (Includes Key Numbers 5-8, 10-12, 39 and 41)
36	STD551037	Washer 13/32 x 13/16 x 16 Gauge			
37	STD560907	Pin, Cotter 3/32 x 3/4			
38	133840	Idler Arm			

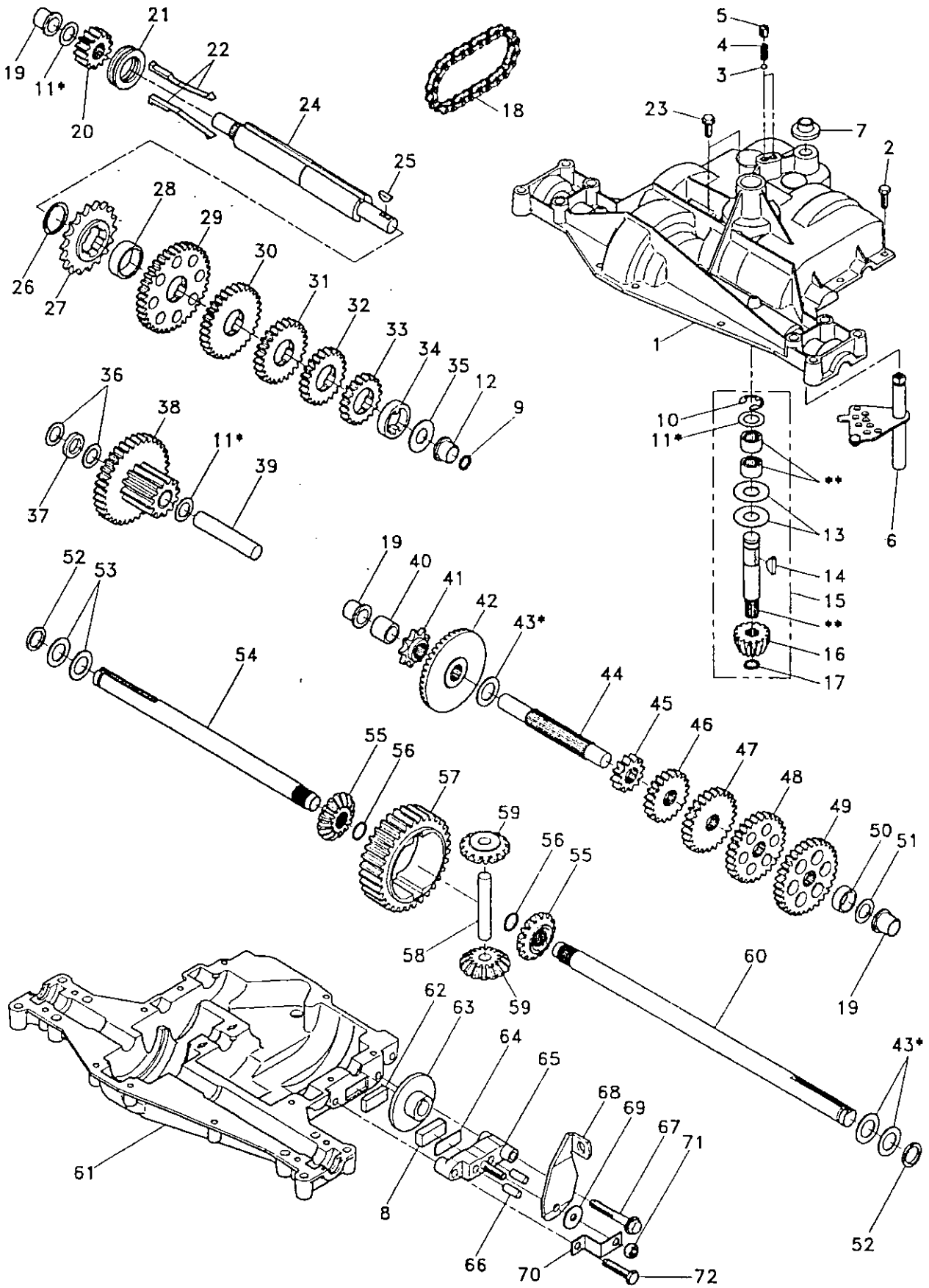
NOTE: All component dimensions given in U.S. inches.
1 inch = 25.4 mm.

HARDWARE SHOWN LARGER FOR EASIER IDENTIFICATION

REPAIR PARTS

TRACTOR -- MODEL NUMBER 917.252551

DANA TRANSAXLE - MODEL NUMBER 4360-78



REPAIR PARTS

TRACTOR - - MODEL NUMBER 917.252551

DANA TRANSAXLE - MODEL NUMBER 4360-78

KEY PART NO. NO.	DESCRIPTION	KEY PART NO. NO.	DESCRIPTION
1 142671	Housing, Upper	41 105928X	Sprocket, 9 Teeth
2 2274J	Screw, Self-Tapping, Large 1/4-20 x .734	42 110084X	Gear, Bevel, 42 Teeth
3 134400	Ball, Detent	43 134394	* Assembly, Kit, Shim .750 Shaft
4 105904X	Spring, Detent	44 120473X	Shaft, Drive
5 105905X	Screw, Set	45 142678	Gear, Spur, 12 Teeth
6 138235	Kit, Shifter Assembly	46 120407X	Gear, Spur, 20 Teeth
7 134399	Boot, Shifter	47 106589X	Gear, Spur, 25 Teeth
8 120951X	Puck, Friction	48 120408X	Gear, Spur, 28 Teeth
9 143045	Seal, Oil	49 105937X	Gear, Spur, 31 Teeth
10 142672	Ring, Retaining	50 105936X	Spacer .781 x 1.00 x .375
11 134793	* Assembly, Kit, Shim .625 Shaft	51 2226J	Washer, Plain .632 x 1.00 x .060
12 143051	Bearing, Flange	52 134401	Washer, Neoprene
13 120415X	Washer, Plain .632 x 1.38 x .046	53 2264J	Washer, Plain .758 x 1.25 x .031
14 142674	Key, Woodruff, #9	54 120474X	Axle, L.H.
15 138234	Assembly, Kit, Input Shaft	55 110081X	Gear, Miter, 15 Teeth
16 110078X	Pinion, Bevel, 14 Teeth	56 105941X	Ring, Retaining
17 105909X	Ring, Retaining	57 110071X	Gear, Spur, 32 Teeth
18 105910X	Chain, 24 Pitches	58 120952X	Shaft, Cross
19 105911X	Bearing, Flange	59 110082X	Gear, Miter, 15 Teeth
20 142675	Gear, Spur, 14 Teeth	60 120475X	Axle, R.H.
21 138246	Collar, Clutch	61 142680	Housing, Lower
22 138236	Assembly, Kit, Clutch Keys	62 120961X	Puck, Friction
23 134791	Screw, Tapping w/Sealer	63 7294J	Disc, Brake
24 142676	Shaft, Intermediate	64 108989X	Spacer
25 2244J	Key, Woodruff, #61	65 120953X	Jaw, Brake
26 105916X	Ring, Retaining	66 120954X	Pin, Dowel
27 120470X	Sprocket, 18 Teeth	67 134799	Screw, Self-Tapping, Large 5/16-18 x 2.25
28 110070X	Spacer	68 138244	Lever, Actuating
29 142677	Gear, Spur, 37 Teeth	69 108996X	Washer, Plain .321 x 1.00 x .055
30 120405X	Gear, Spur, 30 Teeth	70 120956X	Bracket, Anti-Rotation
31 108980X	Gear, Spur, 25 Teeth	71 73810500	Locknut 5/16-24
32 120406X	Gear, Spur, 22 Teeth	72 106596X	Screw, Self-Tapping, Large 5/16-18 x 1.44
33 134796	Gear, Spur, 19 Teeth	73 120416X	Grease
34 134797	Spacer 1.133 x 1.50 x .375		
35 105925X	Washer, Plain .640 x 1.37 x .061		
36 2232J	Washer, Plain .632 x 1.00 x .026		
37 108978X	Spacer .630 x 1.00 x .169		
38 110079X	Assembly, Gear, Combination of 12 Teeth and 35 Teeth		
39 124639X	Shaft, Idler		
40 120472X	Spacer .635 x .875 x .755		

* Use in combinations to maintain proper clearances

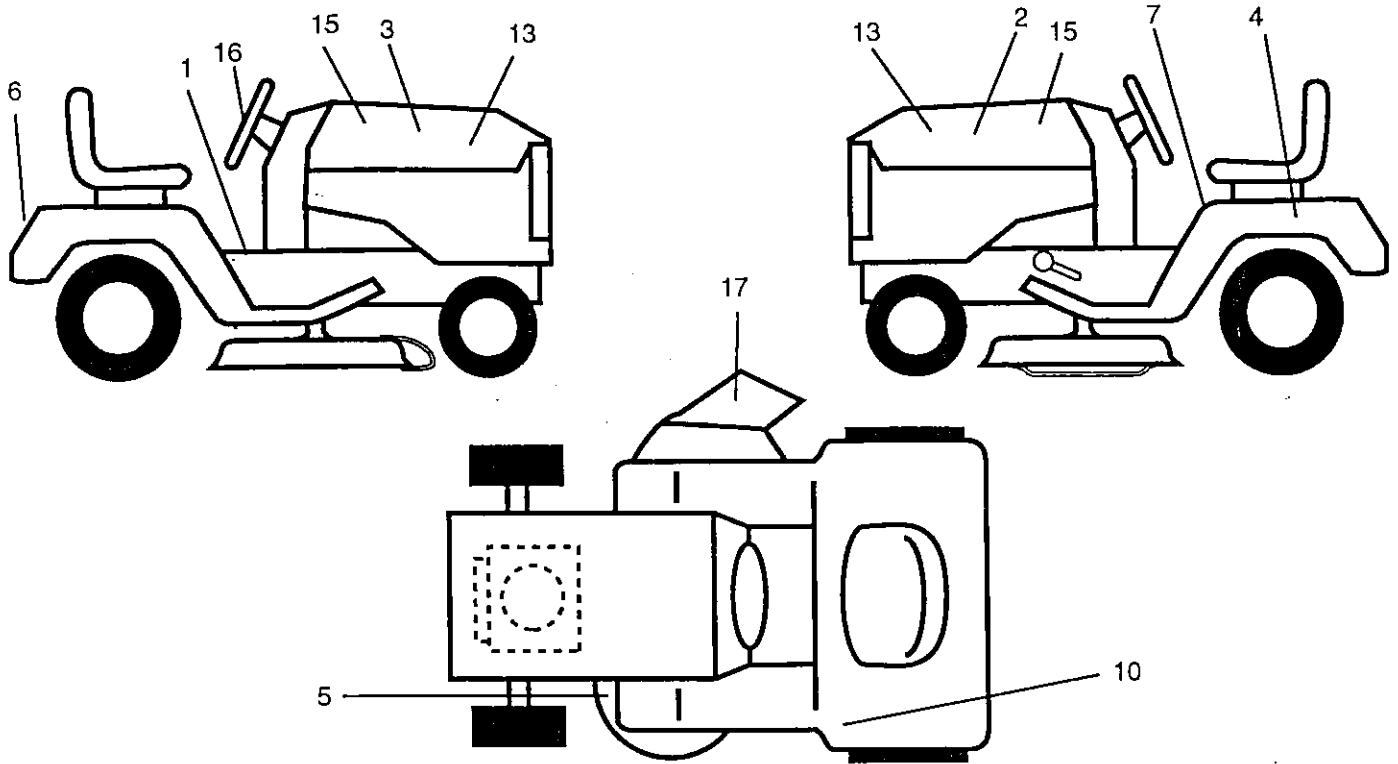
** Order Key No. 15

NOTE: All component dimensions given in U.S. inches
1 inch = 25.4 mm

REPAIR PARTS

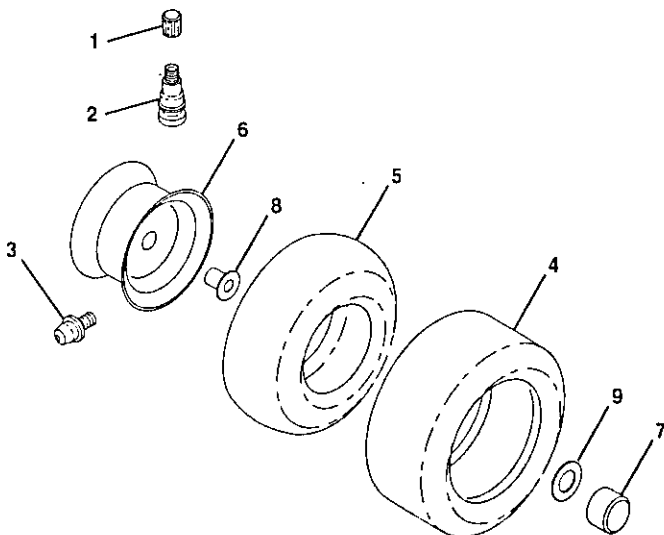
TRACTOR -- MODEL NUMBER 917.252551

DECALS



KEY NO.	PART NO.	DESCRIPTION	KEY NO.	PART NO.	DESCRIPTION
1	138272	Decal, Inst. Oper. E	10	132928	Decal, Indicator Height
2	146816	Decal, Crafts., Vert, Hood, R.H.	13	142241	Decal, PNL, Side, Kohler, Command
3	146817	Decal, Crafts., Vert, Hood, L.H.	15	142244	Decal, Hood Insert
4	145003	Decal, Battery Dan/Poi, Sears Eng	16	132266	Decal, Insert Steering
5	136832	Decal, V-Belt Sch.	17	133178	Decal, Housing
6	128314	Decal, Fender, Sears	--	149128	Manual, Owner's (English)
7	137537	Decal, Caution	--	149129	Manual, Owner's (Spanish)

TIRES & WHEELS



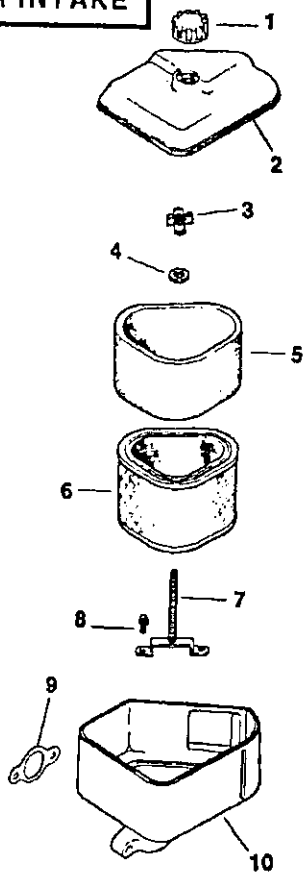
KEY NO.	PART NO.	DESCRIPTION
1	59192	Cap, Valve
2	65139	Stem, Valve
3	278H	Fitting, Grease (Front Only)
4	137422	Tire, Front
	132703	Tire, Rear
5	59904	Tube, Tire, Front
	8134H	Tube, Tire, Rear
		(Optional, Service Item Only)
6	122394X427	Rim Assembly, Front
	140325X427	Rim Assembly, Rear
7	104757X	Cap, Axle
8	9040H	Bearing, Flange (Front Only)
9	121748X	Washer, Axle Cap
--	144334	Sealant, Tire (10 oz. Tube)

REPAIR PARTS

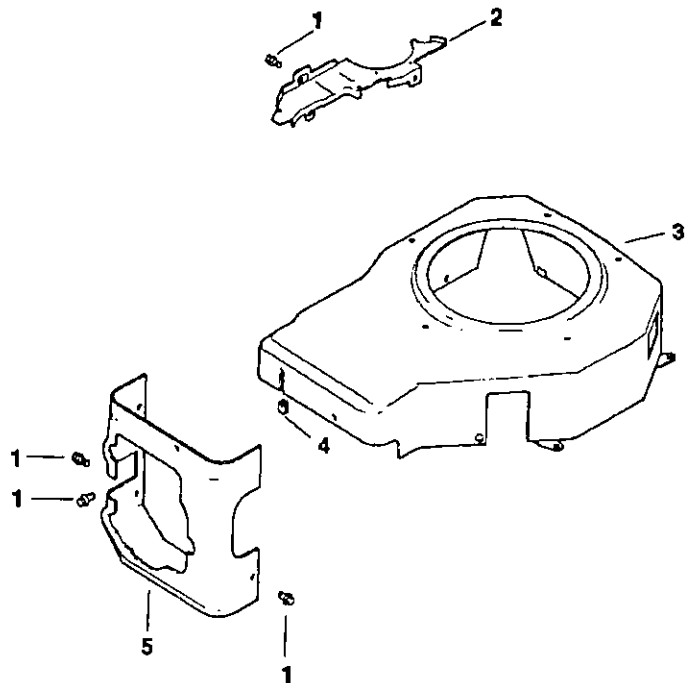
TRACTOR - - MODEL NUMBER 917. 252551

KOHLER ENGINE - MODEL NUMBER CV14, TYPE NUMBER PS1452

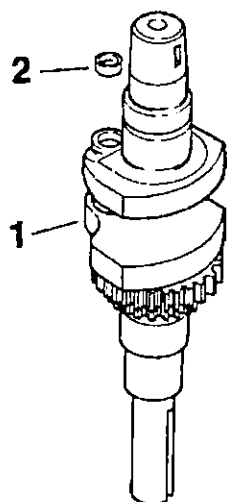
AIR INTAKE



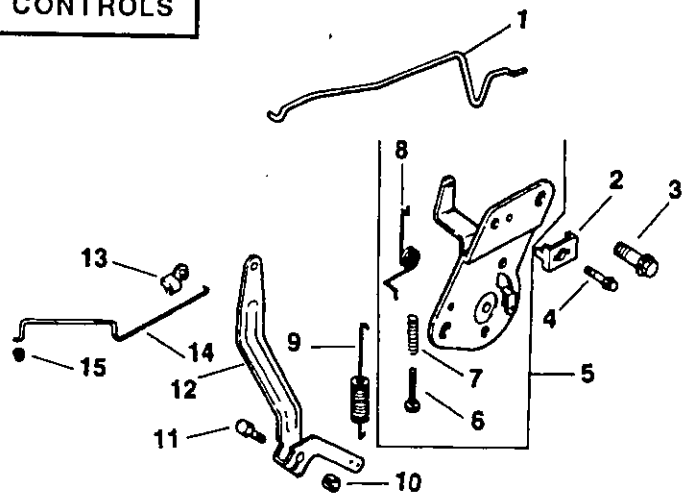
BLOWER HOUSING AND BAFFLES



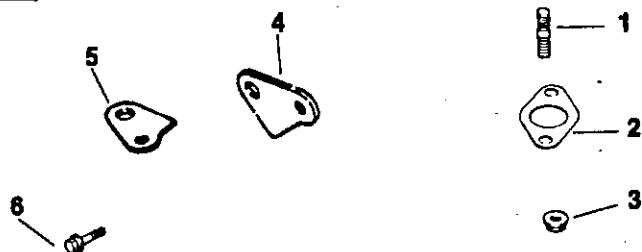
CRANKSHAFT



ENGINE CONTROLS



EXHAUST



REPAIR PARTS

TRACTOR - - MODEL NUMBER 917. 252551

KOHLER ENGINE - MODEL NUMBER CV14, TYPE NUMBER PS1452

AIR INTAKE

KEY PART NO. NO.	DESCRIPTION
1 12 341 01	Knob, Air Cleaner Cover
2 12 096 06	Cover, Air Cleaner
3 12 100 01	Wing Nut
4 X-25-63	Washer, Plain 1/4
5 12 083 08	Precleaner Element
6 12 083 05	Element, Air Cleaner
7 12 072 03	Stud, Mounting Plate
8 12 086 01	Screw, Mounting Plate Stud
9 12 041 02	Gasket, Air Cleaner
10 12 094 01	Base, Air Cleaner

NOT ILLUSTRATED

-- 12 113 27 Decal, Air Cleaner

EXHAUST

KEY PART NO. NO.	DESCRIPTION
1 M-0829033	Stud, Exhaust Manifold M8 x 1.25 x 20 (2)
2 12 041 03	Gasket, Exhaust Manifold
3 M-0841080	Nut, Muffler Mounting M8 x 1.25 (2)
4 12 126 11	Bracket, Muffler
5 12 445 01	Strap, Lifting
6 M-0645025	Screw, Lifting Strap M6 x 1.0 x 25 (2)
-- 12 522 01	Short Block
-- 12 755 01	Gasket Set

CRANKSHAFT

KEY PART NO. NO.	DESCRIPTION
1 12 014 02	Crankshaft
2 12 139 01	Plug, Cup

BLOWER HOUSING AND BAFFLES

KEY PART NO. NO.	DESCRIPTION
1 SM-0545010	Screw, Mounting M5 x 0.8 x 10 (12)
2 12 146 07	Plate, Blower Housing
3 12 027 14	Housing, Blower
4 12 313 03	Grommet, Blower Housing
5 12 063 08	Baffle, Cylinder Head

NOT ILLUSTRATED

-- 12 113 28 Decal, Horsepower

ENGINE CONTROLS

KEY PART NO. NO.	DESCRIPTION
1 12 079 07	Linkage, Choke
2 12 237 01	Clamp, Cable
3 SM-0645016	Screw, Hex Head M6 x 1.0 x 16 (2)
4 SM-0545016	Screw, Cable Clamp
5 12 536 01	Control, Speed Assembly (Includes Key Numbers 6 through 8)
6 SM-0443025	Screw
7 12 089 11	Spring, Choke Adjust
8 12 089 04	Spring, Choke Return
9 12 089 19	Spring, Governor
10 SM-0641060	Nut, Governor Arm M6 x 1.0
11 SM-0642025	Screw, Governor Arm M6 x 1.0 x 25
12 12 090 05	Lever, Governor
13 25 158 11	Bushing
14 12 079 01	Linkage, Throttle
15 25 158 08	Bushing

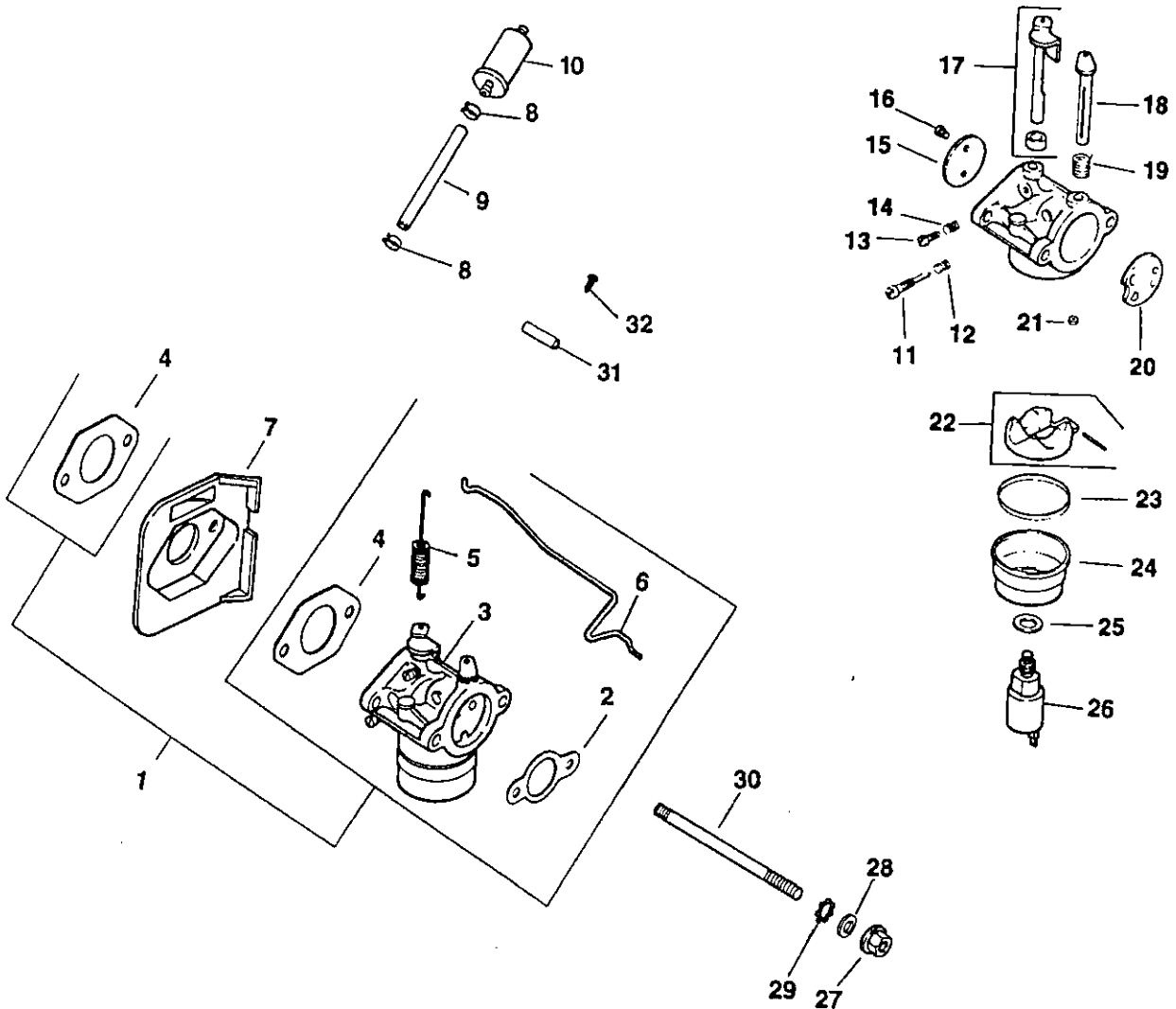
NOTE: All component dimensions given in U.S. inches
1 inch = 25.4 mm

REPAIR PARTS

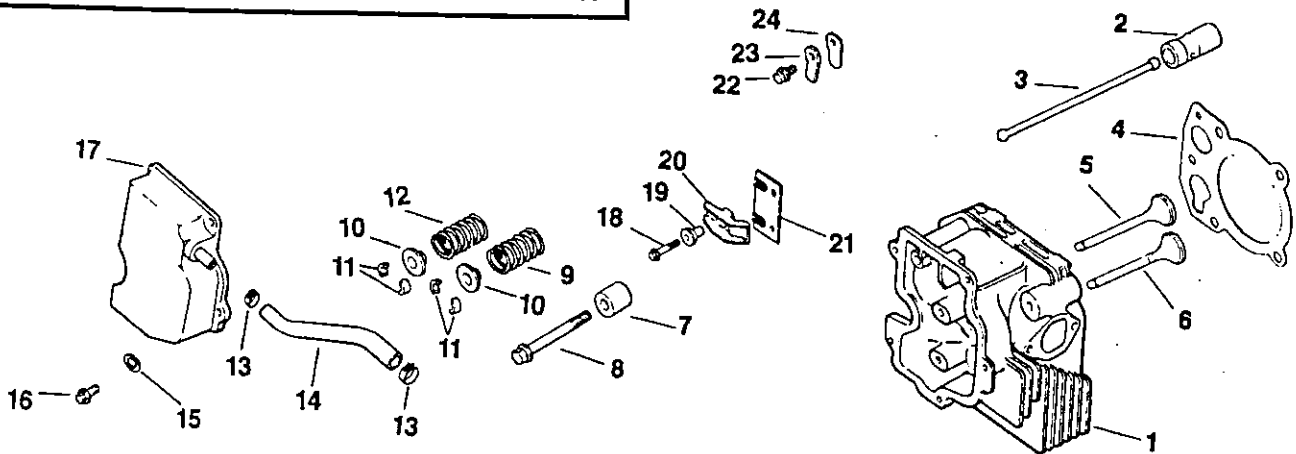
TRACTOR - - MODEL NUMBER 917. 252551

KOHLER ENGINE - MODEL NUMBER CV14, TYPE NUMBER PS1452

FUEL SYSTEM



CYLINDER HEAD, VALVE AND BREATHER



REPAIR PARTS

TRACTOR - - MODEL NUMBER 917. 252551

KOHLER ENGINE - MODEL NUMBER CV14, TYPE NUMBER PS1452

FUEL SYSTEM

KEY PART NO. NO.	DESCRIPTION
1 12 853 26	Kit, Carburetor (Includes Key Numbers 2 thru 6)
2 12 041 02	Gasket, Air Cleaner
3 12 053 32	Carburetor Assembly (For Information Only - Not Available Separately) (Includes Key Numbers 11 thru 26)
4 12 041 01	Gasket, Carburetor (2)
5 12 089 04	Spring, Choke Return
6 12 079 07	Linkage, Choke
7 12 265 01	Deflector, Heat
8 X-426-9	Clamp, Hose (2)
9 25 353 02	Fuel Line, 3"
10 25 050 02	Filter, Fuel
11 12 368 01	Needle, Idle, Fuel Adjust
12 12 089 09	Spring, Idle Fuel
13 12 086 04	Screw, Idle Speed Adjust
14 12 089 09	Spring, Idle Speed
15 12 146 03	Plate, Throttle
16 25 086 27	Screw, Throttle Plate (2)
17 12 144 09	Shaft, Throttle with Lever and Seal
18 12 144 08	Shaft, Choke
19 12 089 10	Spring, Choke Return
20 12 146 02	Plate, Choke
21 12 337 01	Jet, Main
22 12 757 02	Kit, Float
23 12 041 05	Gasket, Bowl
24 12 104 01	Bowl, Fuel
25 12 041 06	Gasket, Bowl Retainer Screw
26 12 757 09	Kit, Solenoid Assembly
27 SM-0641060	Nut, Carburetor M6 x 1.0 (2)
28 X-25-63	Washer, Plain 1/4
29 X-22-11	Washer, Internal Tooth 1/4
30 M-0629122	Stud, Carburetor M6 x 1.0 x 110 (2)
31 12 431 01	Sleeve, Insulating
32 12 086 07	Screw, Ground Wire

NOT ILLUSTRATED

-- 12 757 03	Kit, Carburetor Repair
-- 12 755 09	Kit, High Altitude Jet
-- 12 518 05	Lead, Solenoid, Black, 5", 14 Gauge, Uninsulated Push-On Tabs
-- 41 518 34	Lead, Ground, Green, 5", 18 Gauge Insulated Grip Barrel Eyelets

CYLINDER HEAD, VALVE AND BREATHER

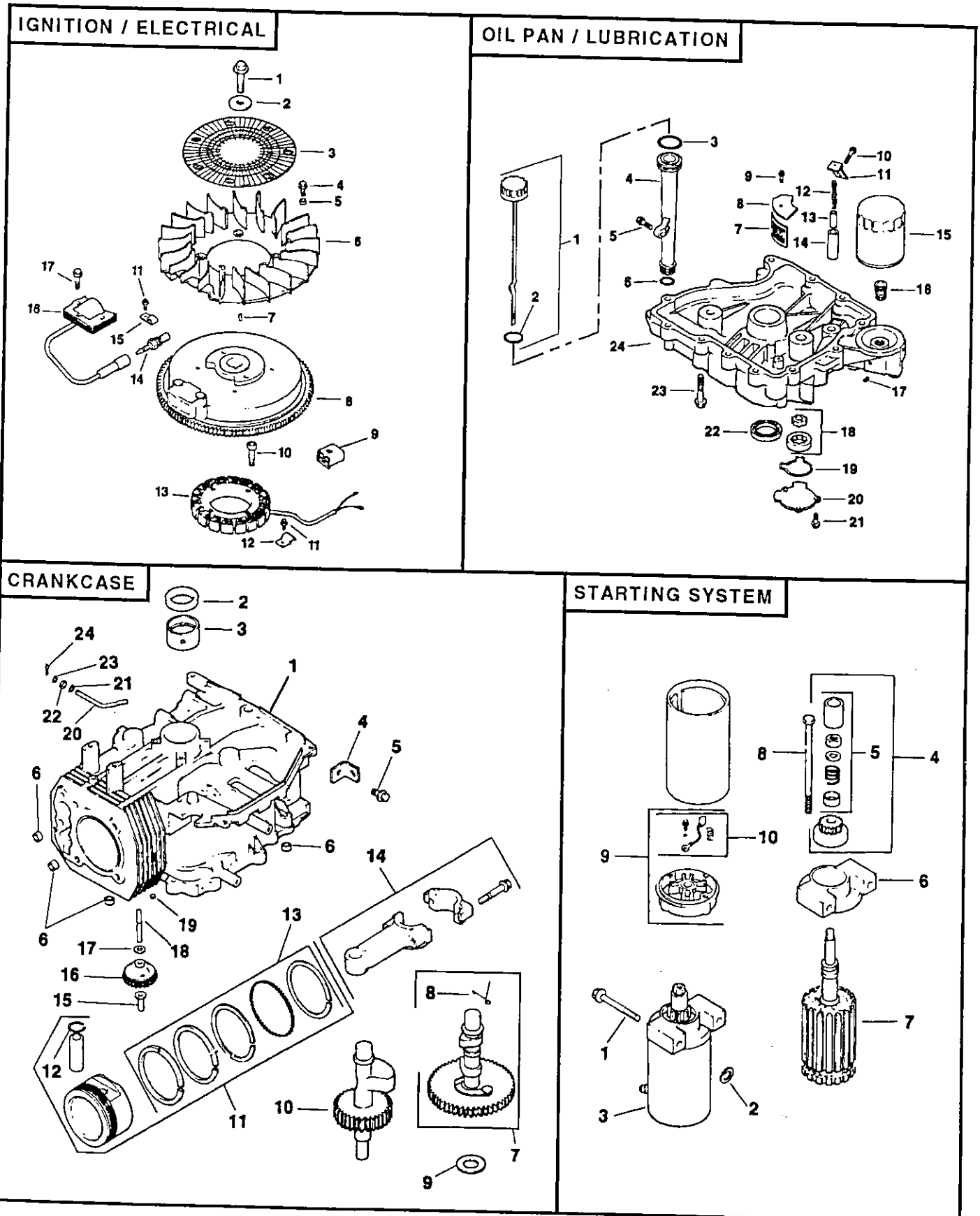
KEY PART NO. NO.	DESCRIPTION
1 12 318 02	Head, Cylinder
2 12 351 01	Lifter, Valve (2)
3 12 411 01	Rod, Push (2)
4 12 041 08	Gasket, Cylinder Head
5 12 017 01	Valve, Intake, Standard Size
12 017 02	Valve, Intake, .25" Oversize
6 12 016 01	Valve, Exhaust, Standard Size
12 016 02	Valve, Exhaust, .25" Oversize
7 12 112 13	Spacer, Head Bolt Exhaust Port
8 12 086 15	Screw, Cylinder Head M10 x 1.5 x 80 (5)
9 12 089 15	Spring, Exhaust Valve
10 12 173 01	Cap, Valve Spring (2)
11 12 755 03	Kit, Retainer (2)
12 12 089 01	Spring, Intake Valve
13 X-426-9	Clamp, Hose (2)
14 12 326 03	Hose, Breather
15 12 468 05	Washer, Flat
16 SM-0645020	Screw, Valve Cover M6 x 1.0 x 20 (5)
17 12 096 07	Cover, Valve with Nipple
18 M-0640034	Screw, Rocker Arm M6 x 1 x 34 (2)
19 24 194 01	Ball, Rocker Pivot (2)
20 24 186 01	Arm, Rocker (2)
21 12 146 13	Plate, Guide
22 SM-0545010	Screw, Breather Reed Retainer M5 x 0.8 x 10
23 12 018 01	Retainer, Breather Reed
24 12 402 01	Reed, Breather

NOTE: All component dimensions given in U.S. inches
1 inch = 25.4 mm

REPAIR PARTS

TRACTOR - - MODEL NUMBER 917. 252551

KOHLER ENGINE - MODEL NUMBER CV14, TYPE NUMBER PS1452



REPAIR PARTS

TRACTOR - - MODEL NUMBER 917. 252551

KOHLER ENGINE - MODEL NUMBER CV14, TYPE NUMBER PS1452

IGNITION / ELECTRICAL

KEY PART NO. NO.	DESCRIPTION
1 12 086 14	Screw, Flywheel M10 x 1.5 x 45.8
2 12 468 03	Washer, Flywheel
3 12 162 01	Screen, Grass
4 M-0639016	Screw, Fan M6 x 1 x 13 (4)
5 12 112 01	Spacer, Fan (4)
6 12 157 02	Fan
7 X-42-15	Key
8 12 025 25	Flywheel Assembly
9 41 155 02	Connector
10 M-0548025	Screw, Stator Mounting M5 x 0.8 x 25 (4)
11 SM-0545010	Screw, Stator Harness Clip M5 x 0.8 x 10 (2)
12 12 154 02	Clip, Stator Harness
13 12 085 03	Stator Assembly, 15 Amp
14 12 132 02	Spark Plug
15 X-728-1	Clip, Cable
16 12 584 01	Module, Ignition
17 SM-0545020	Screw, Ignition Module M5 x 0.8 x 20 (2)
NOT ILLUSTRATED	
-- 12 518 01	Lead, White, Ground To Kill (19", 18 Gauge, Fully Insulated Push-on Tab and Uninsulated Push-on Tab Terminals)
-- 55 755 01	Kit, Diode

OIL PAN / LUBRICATION

KEY PART NO. NO.	DESCRIPTION
1 12 038 01	Dipstick Assembly (Includes #2)
2 12 153 03	O-Ring, Dipstick
3 12 153 02	O-Ring, Upper Oil Fill Tube
4 12 123 04	Tube, Oil Fill
5 SM-0545020	Screw, Oil Fill Tube M5 x 0.8 x 20
6 12 153 01	O-Ring, Lower Oil Fill Tube
7 12 162 02	Screen, Oil Pickup
8 12 096 03	Cover, Oil Pickup Screen
9 SM-0545016	Screw, Screen Cover
10 M-1051025	Screw, Oil Pump Relief Valve Bracket M10 x 1.5 x 25
11 12 126 02	Bracket, Oil Pump Relief Valve
12 12 089 03	Spring, Oil Pump Relief Valve
13 12 462 01	Piston, Oil Pump Relief Valve
14 12 208 01	Body, Oil Pump Relief Valve
15 12 050 01	Filter, Oil
16 12 136 01	Adapter, Oil Filter
17 X-75-10	Plug, Square Head, Solid 3/8 NPTF
18 12 393 01	Oil Pump Assembly
19 12 032 04	O-Ring, Oil Pump Cover
20 12 096 02	Cover, Oil Pump
21 SM-0545016	Screw, Oil Pump Cover M5 x 0.8 x 16 (3)
22 12 032 03	Seal, Oil (P.T.O. End)
23 SM-0839045	Screw, Oil Pan M8 x 1.25 x 45 (12)
24 12 199 33	Pan, Oil

CRANKCASE

KEY PART NO. NO.	DESCRIPTION
1 ---	Block, Cylinder (Use Short Block, Part Number 12 522 01)
2 12 032 03	Seal, Crankshaft
3 12 030 01	Bearing, Crankshaft, Standard (Flywheel End)
12 030 02	Bearing, Crankshaft .25" oversize
12 030 03	Bearing, Crankshaft .50" oversize
4 12 445 02	Strap, Lifting
5 M-0839025	Screw, Lifting Strap M8 x 1.25 x 22
6 12 380 03	Dowel, Locating (4)
7 12 010 04	Camshaft Assembly (Includes #8)
8 12 089 18	Spring, Actuating
9 12 422 08	Shim, Camshaft
12 422 09	Shim, Camshaft (as required)
12 422 10	Shim, Camshaft (as required)
12 422 11	Shim, Camshaft (as required)
12 422 12	Shim, Camshaft (as required)
12 422 13	Shim, Camshaft (as required)
12 422 07	Shim, Camshaft (as required)
10 12 144 04	Shaft, Balance
11 12 874 01	Piston w/Ring Set, Standard
12 874 02	Piston w/Ring Set .25" oversize
12 874 03	Piston w/Ring Set .50" oversize
12 12 018 02	Retainer, Piston Pin (2)
13 12 108 01	Ring Set, Standard
12 108 02	Ring Set .25" oversize
12 108 03	Ring Set .50" oversize
14 12 067 01	Connecting Rod, Standard
12 067 02	Connecting Rod .25" oversize
15 12 380 01	Pin, Governor Regulating
16 12 043 05	Gear, Governor Assembly
17 SM-0631005	Washer, Governor Gear Thrust
18 12 144 02	Shaft, Governor Gear
19 52 139 09	Plug, Cup
20 12 144 01	Shaft, Governor Cross
21 SM-0631015	Washer, Governor Shaft
22 12 032 01	Seal, Governor Cross Shaft
23 X-25-102	Washer, Plain 1/4
24 12 380 04	Pin, Governor Hitch

STARTING SYSTEM

KEY PART NO. NO.	DESCRIPTION
1 M-0839070	Screw, Bendix Starter M8 x 1.25 x 70 (2)
2 12 468 01	Washer (2)
3 12 098 05	Starter Bendix (Includes #4-10)
4 12 755 12	Kit, Drive (Includes Key Number 5)
5 12 755 06	Kit, Drive Parts
6 12 227 01	Cap, Drive End
7 12 170 02	Armature
8 12 086 02	Screw, Hex Flange
9 12 243 01	Cap, Commutator End (Includes Key Number 10)
10 52 755 15	Kit, Brush
NOT ILLUSTRATED	
-- 52 357 01	Lubricant, Starter

NOTE: All component dimensions given in U.S. inches
1 inch = 25.4 mm