

SEARS

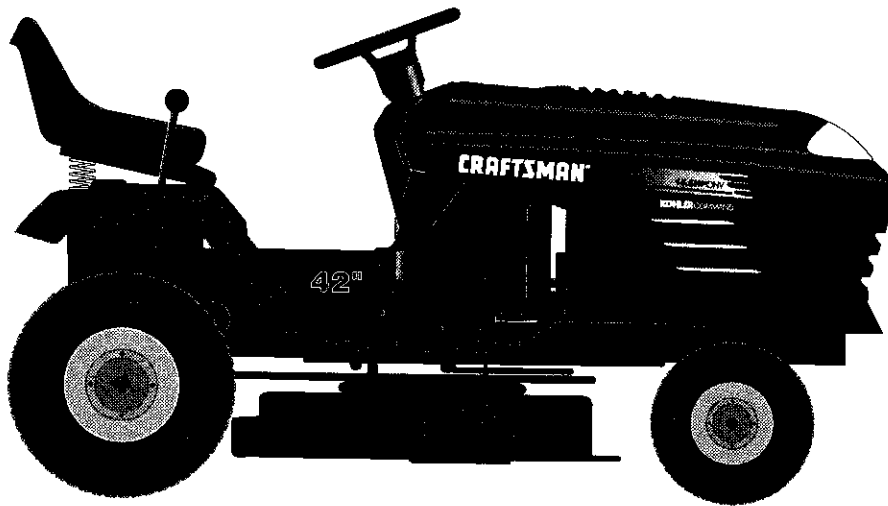
CRAFTSMAN®

MODEL NUMBER 917.252590 OWNER'S MANUAL

- Assembly
- Operation
- Customer Responsibilities
- Service and Adjustments
- Repair Parts

3one™
Convertible

15A 22,5HK



CAUTION: Read and follow all safety rules and instructions before operating this equipment.

Sears, Roebuck and Co., Hoffman Estates, IL 60179 U.S.A.



SAFETY RULES

Safe Operation Practices for Ride-On Mowers



IMPORTANT: THIS CUTTING MACHINE IS CAPABLE OF AMPUTATING HANDS AND FEET AND THROWING OBJECTS. FAILURE TO OBSERVE THE FOLLOWING SAFETY INSTRUCTIONS COULD RESULT IN SERIOUS INJURY OR DEATH.

I. GENERAL OPERATION

- Read, understand, and follow all instructions in the manual and on the machine before starting.
- Only allow responsible adults, who are familiar with the instructions, to operate the machine.
- Clear the area of objects such as rocks, toys, wire, etc., which could be picked up and thrown by the blade.
- Be sure the area is clear of other people before mowing. Stop machine if anyone enters the area.
- Never carry passengers.
- Do not mow in reverse unless absolutely necessary. Always look down and behind before and while backing.
- Be aware of the mower discharge direction and do not point it at anyone. Do not operate the mower without either the entire grass catcher or the guard in place.
- Slow down before turning.
- Never leave a running machine unattended. Always turn off blades, set parking brake, stop engine, and remove keys before dismounting.
- Turn off blades when not mowing.
- Stop engine before removing grass catcher or unclogging chute.
- Mow only in daylight or good artificial light.
- Do not operate the machine while under the influence of alcohol or drugs.
- Watch for traffic when operating near or crossing roadways.
- Use extra care when loading or unloading the machine into a trailer or truck.

II. SLOPE OPERATION

Slopes are a major factor related to loss-of-control and tipover accidents, which can result in severe injury or death. All slopes require extra caution. If you cannot back up the slope or if you feel uneasy on it, do not mow it.

DO:

- Mow up and down slopes, not across.
- Remove obstacles such as rocks, tree limbs, etc.
- Watch for holes, ruts, or bumps. Uneven terrain could overturn the machine. *Tall grass can hide obstacles.*
- Use slow speed. Choose a low gear so that you will not have to stop or shift while on the slope.
- Follow the manufacturer's recommendations for wheel weights or counterweights to improve stability.
- Use extra care with grass catchers or other attachments. These can change the stability of the machine.
- Keep all movement on the slopes *slow* and *gradual*. Do not make sudden changes in speed or direction.
- Avoid starting or stopping on a slope. If tires lose traction, disengage the blades and proceed slowly *straight* down the slope.

DO NOT:

- *Do not* turn on slopes unless necessary, and then, turn slowly and gradually downhill, if possible.
- *Do not* mow near drop-offs, ditches, or embankments. The mower could suddenly turn over if a wheel is over the edge of a cliff or ditch, or if an edge caves in.
- *Do not* mow on wet grass. Reduced traction could cause sliding.
- *Do not* try to stabilize the machine by putting your foot on the ground.
- *Do not* use grass catcher on steep slopes.

III. CHILDREN

Tragic accidents can occur if the operator is not alert to the presence of children. Children are often attracted to the machine and the mowing activity. *Never* assume that children will remain where you last saw them.

- Keep children out of the mowing area and under the watchful care of another responsible adult.
- Be alert and turn machine off if children enter the area.
- Before and when backing, look behind and *down* for small children.
- Never carry children. They may fall off and be seriously injured or interfere with safe machine operation.
- Never allow children to operate the machine.
- Use extra care when approaching blind corners, shrubs, trees, or other objects that may obscure vision.

IV. SERVICE

- Use extra care in handling gasoline and other fuels. They are flammable and vapors are explosive.
 - Use only an approved container.
 - Never remove gas cap or add fuel with the engine running. Allow engine to cool before refueling. Do not smoke.
 - Never refuel the machine indoors.
 - Never store the machine or fuel container inside where there is an open flame, such as a water heater.
- Never run a machine inside a closed area.
- Keep nuts and bolts, especially blade attachment bolts, tight and keep equipment in good condition.
- Never tamper with safety devices. Check their proper operation regularly.
- Keep machine free of grass, leaves, or other debris build-up. Clean oil or fuel spillage. Allow machine to cool before storing.
- Stop and inspect the equipment if you strike an object. Repair, if necessary, before restarting.
- Never make adjustments or repairs with the engine running.
- Grass catcher components are subject to wear, damage, and deterioration, which could expose moving parts or allow objects to be thrown. Frequently check components and replace with manufacturer's recommended parts, when necessary.
- Mower blades are sharp and can cut. Wrap the blade(s) or wear gloves, and use extra caution when servicing them.
- Check brake operation frequently. Adjust and service as required.



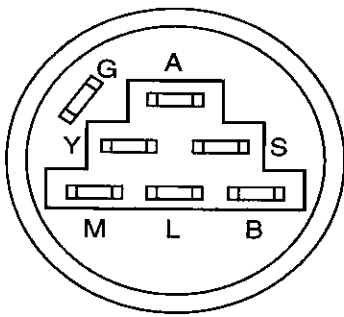
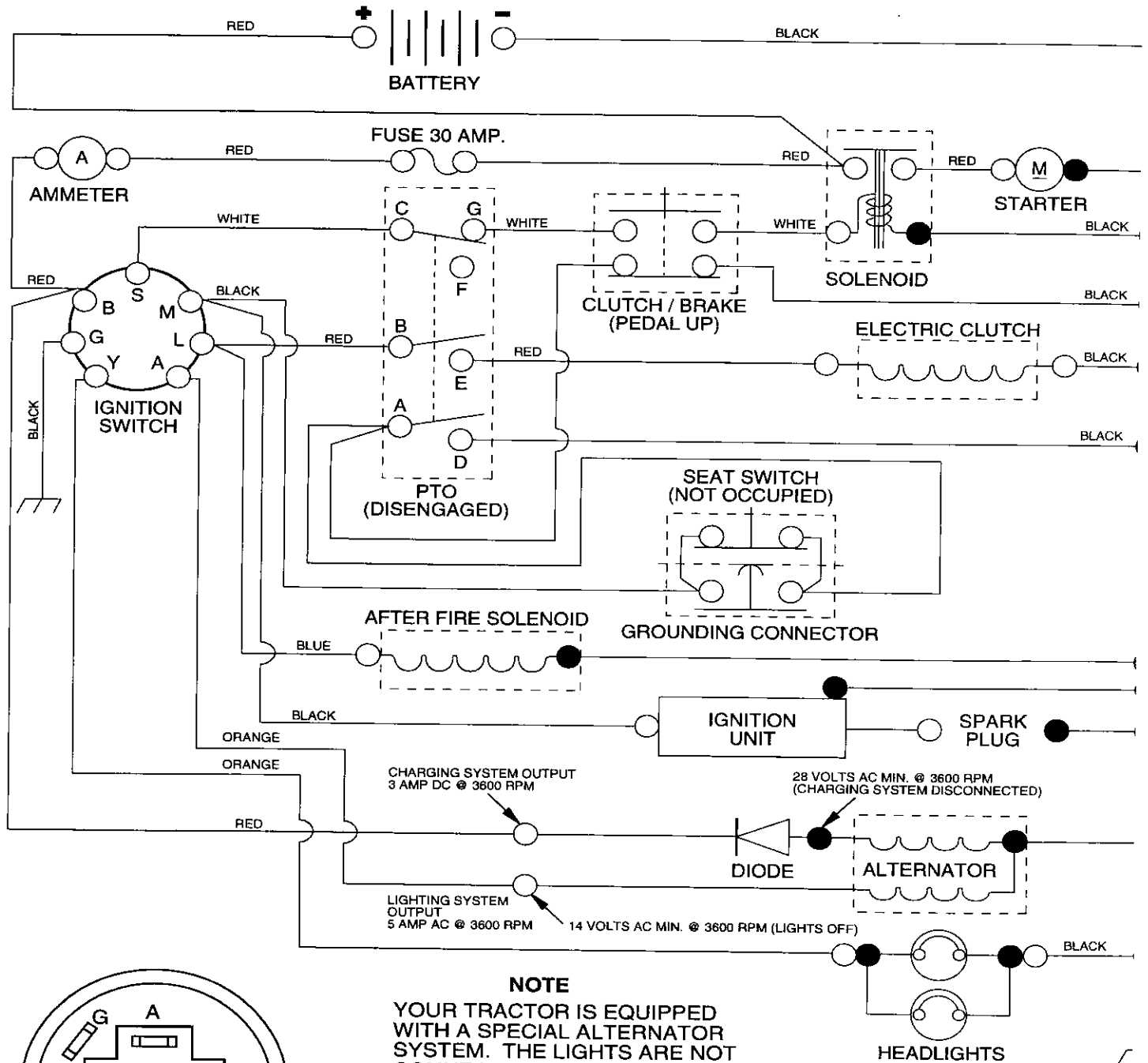
Look for this symbol to point out important safety precautions. It means CAUTION!!! BECOME ALERT!!! YOUR SAFETY IS INVOLVED.



CAUTION: Always disconnect spark plug wire and place wire where it cannot contact spark plug in order to prevent accidental starting when setting up, transporting, adjusting or making repairs.

TRACTOR - - MODEL NUMBER 917.252590

SCHEMATIC



IGNITION SWITCH

POSITION	CIRCUIT	"MAKE"
OFF	G + M + L	NONE
RUN/LIGHT	B + L	A + Y
RUN	B + L	NONE
START	B + L + S	NONE

NOTE

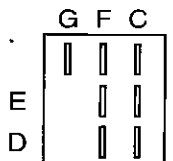
YOUR TRACTOR IS EQUIPPED WITH A SPECIAL ALTERNATOR SYSTEM. THE LIGHTS ARE NOT CONNECTED TO THE BATTERY, BUT HAVE THEIR OWN ELECTRICAL SOURCE. BECAUSE OF THIS, THE BRIGHTNESS OF THE LIGHTS WILL CHANGE WITH ENGINE SPEED. AT IDLE THE LIGHTS WILL DIM. AS THE ENGINE IS SPEEDED UP, THE LIGHTS WILL BECOME THEIR BRIGHTEST.

WIRING INSULATED CLIPS

NOTE: IF WIRING INSULATED CLIPS WERE REMOVED FOR SERVICING OF UNIT, THEY SHOULD BE REPLACED TO PROPERLY SECURE YOUR WIRING.

NON-REMOVABLE CONNECTIONS

REMOVABLE CONNECTIONS



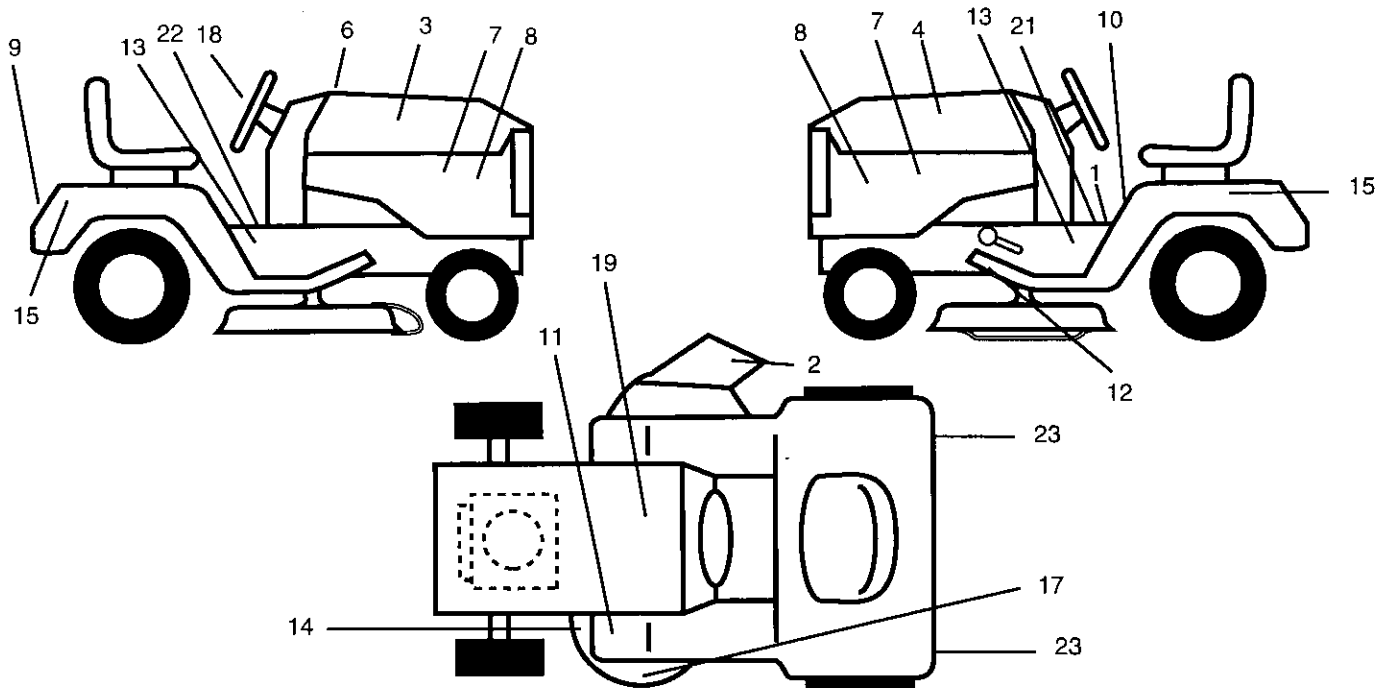
PTO SWITCH

POSITION	CIRCUIT
OFF	C + G
ON	C + F, B + E, A +

REPAIR PARTS

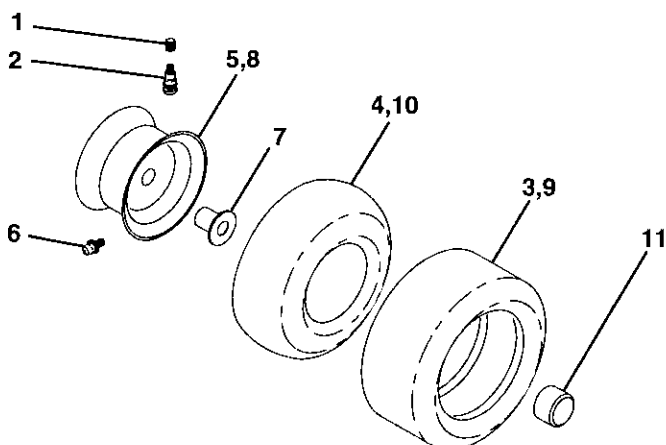
TRACTOR - - MODEL NUMBER 917.252590

DECALS



KEY NO.	PART NO.	DESCRIPTION	KEY NO.	PART NO.	DESCRIPTION
1	140819	Decal, Operating Instruction	15	142270	Decal, Fender Hydro White
2	133178	Decal, Mower, 3 In One	17	133179	Decal, Mower QC System
3	149405	Decal, Hood, Craftsman, RH	18	132266	Decal, Insert Strg
4	149406	Decal, Hood, Craftsman, LH	19	138047	Decal, Battery
6	133644	Decal, Maintenance	21	140837	Decal Brake Parking Saddle
7	138048	Decal, Side Panel	22	142336	Decal, Sdl Cold Start Hydro Eng.
8	149407	Decal, Side Panel	23	106202X	Reflector, Taillight
9	128314	Decal, Fender, Craftsman	--	138311	Decal, Handle Lift Height Adj.
10	137537	Decal, Caution	--	142341	Decal, Drawbar Cntrl Mvt. Hyd Lt
11	4900J	Decal, Clutch/Brake	--	145245	Pad Footrest Rbr Sq Craftsman
12	146046	Decal, V-Belt Drive Schematic	--	145247	Fastner Pop In Footrest
13	138145	Decal, Chassis 42"	--	147523	Manual, Owner's (Eng)
14	136832	Decal, V-Belt Schematic	--	147524	Manual, Owners (Span)

WHEELS & TIRES



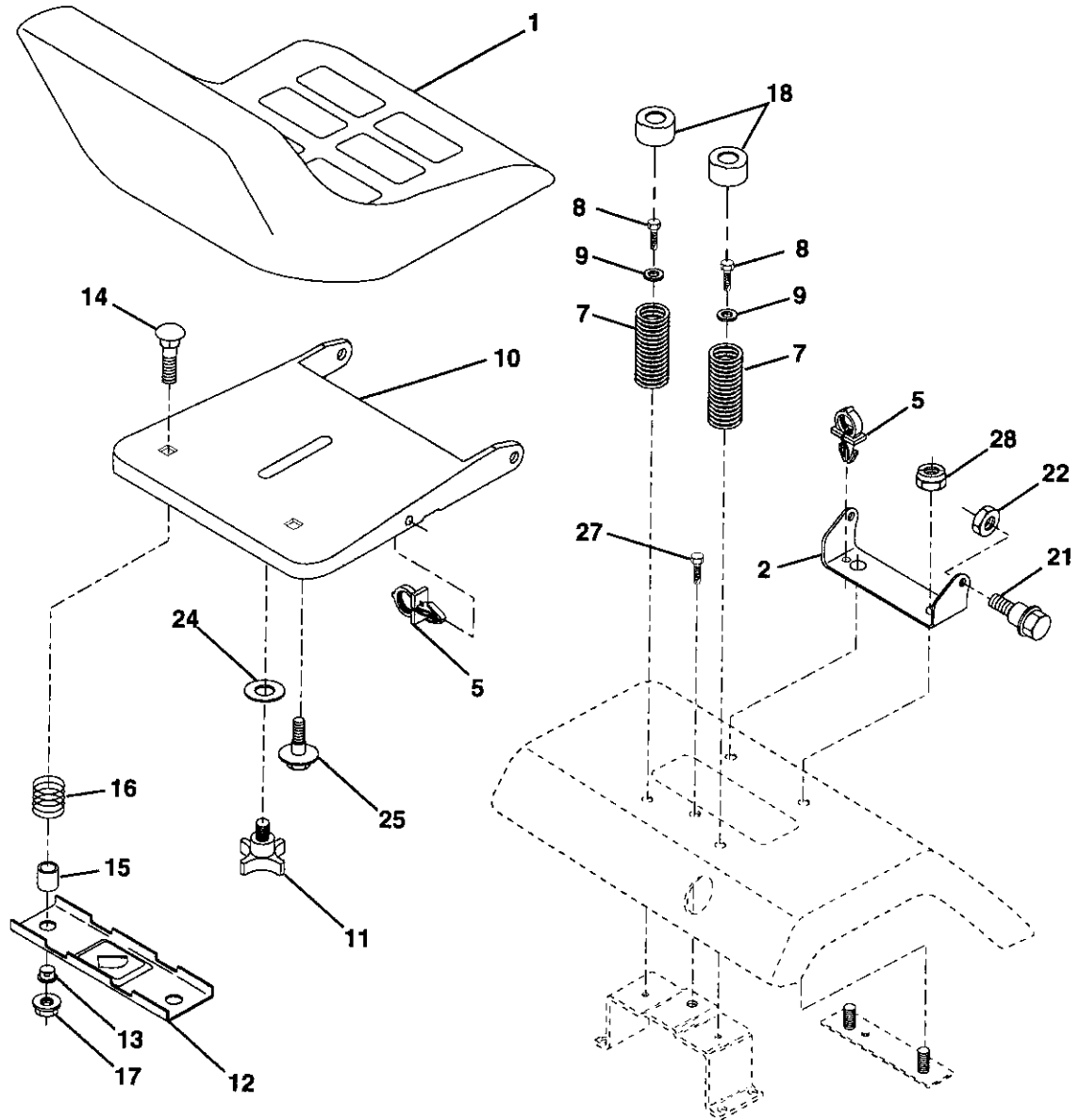
KEY NO.	PART NO.	DESCRIPTION
1	59192	Cap, Valve, Tire
2	65139	Stem, Valve
3	106222X	Tire, Front
4	59904	Tube, Front (Service Item Only)
5	106732X427	Rim Assembly, Front
6	278H	Fitting, Grease (Front Wheel Only)
7	9040H	Bearing, Flange (Front Wheel Only)
8	106108X427	Rim Assembly, Rear
9	122082X	Tire, Rear
10	7152J	Tube, Rear (Service Item Only)
11	104757X	Cap, Axle
--	144334	Sealant, Tire (10 oz. Tube)

NOTE: All component dimensions given in U.S. inches
1 inch = 25.4 mm

REPAIR PARTS

TRACTOR - - MODEL NUMBER 917.252590

SEAT ASSEMBLY



KEY NO.	PART NO.	DESCRIPTION
1	140123	Seat
2	140551	Bracket, Pivot, Seat
5	145006	Clip Push-In, Hinged
7	124181X	Spring, Seat
8	17490508	Screw Thdrol. 5/16-18 x 1/2
9	19131614	Washer 13/32 x 1 x 14 Gauge
10	140552	Pan, Seat
11	120068X	Knob, Seat
12	121246X	Bracket, Switch Mounting
13	121248X	Bushing, Snap, Nylon
14	72050411	Bolt, Carriage 1/4-20 x 1-3/8
15	134300	Spacer, Split

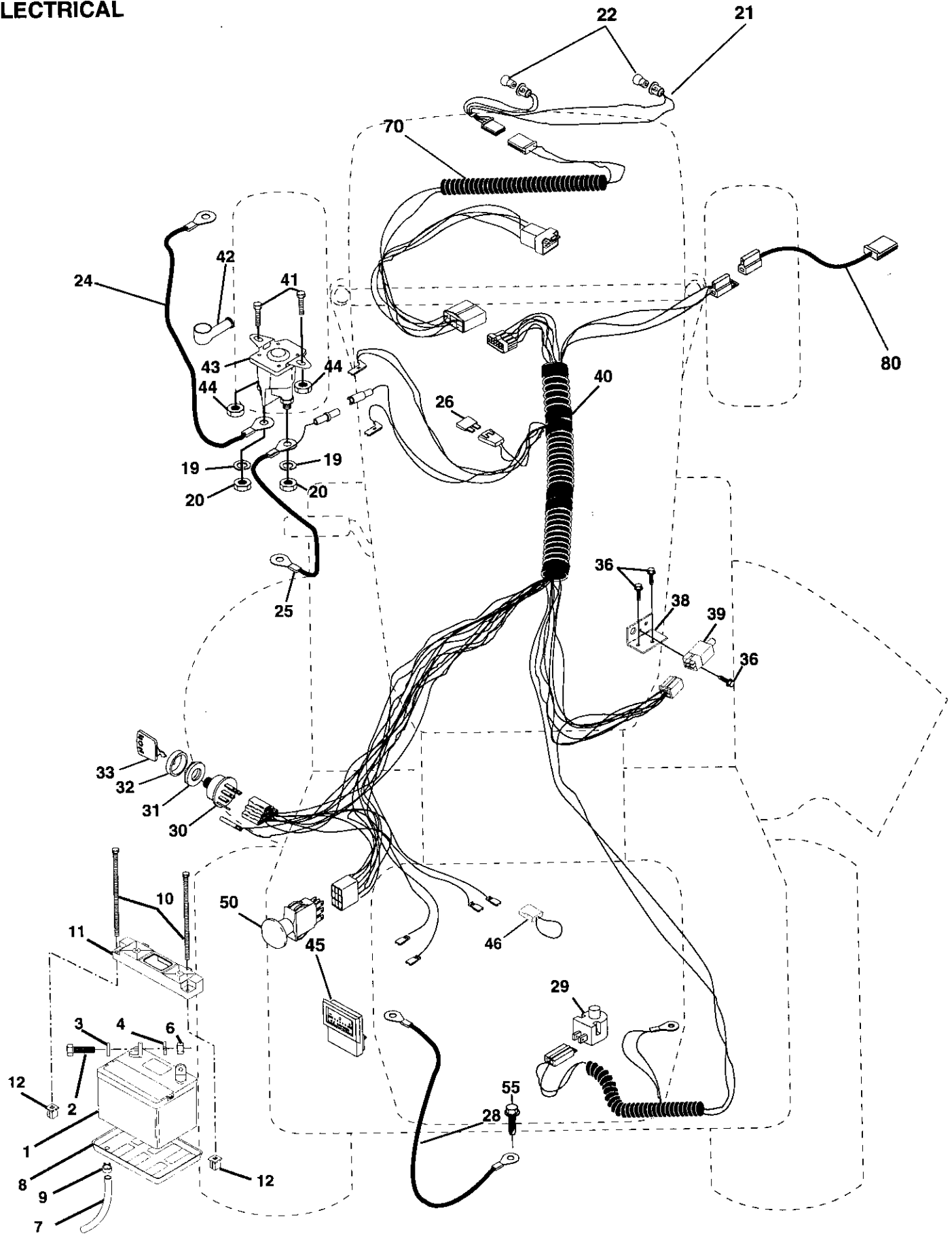
KEY NO.	PART NO.	DESCRIPTION
16	121250X	Spring
18	124238X	Cap, Spring, Seat
17	123976X	Nut, Flangelock 1/4 Grade 5
21	139888	Bolt, Shoulder 5/16-18 UNC
22	STD541431	Nut
24	19171912	Washer 17/32 x 1-3/16 x 12 Gauge
25	127018X	Bolt, Shoulder 5/16-18 x .62
27	17490608	Screw Thdrol. 3/8-16 x 1/2
28	STD541437	Nut

NOTE: All component dimensions given in U.S. inches
1 inch = 25.4 mm

REPAIR PARTS

TRACTOR -- MODEL NUMBER 917.252590

ELECTRICAL



REPAIR PARTS

TRACTOR - - MODEL NUMBER 917.252590

ELECTRICAL

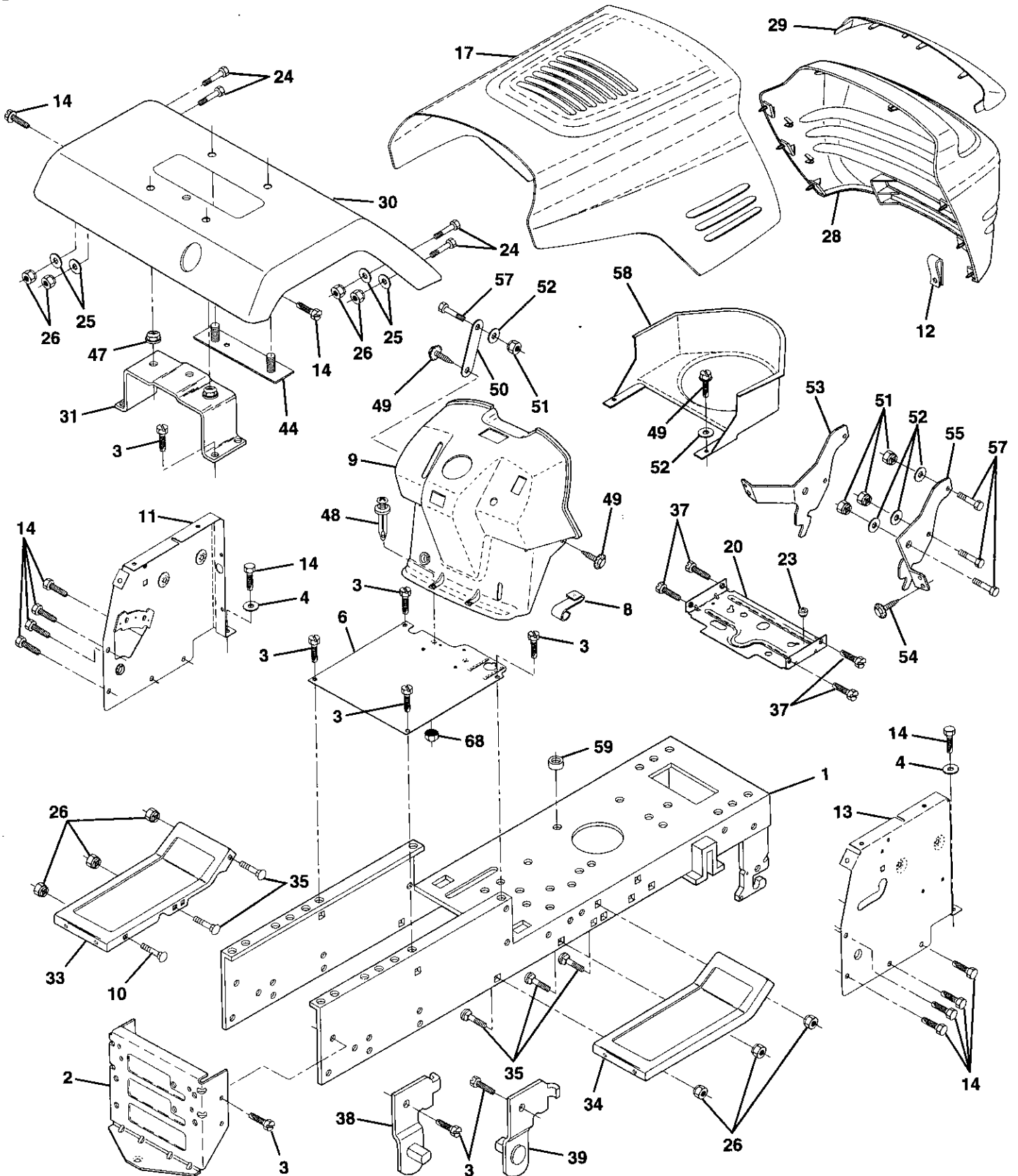
KEY NO.	PART NO.	DESCRIPTION
1	144926	Battery
2	74760412	Bolt, Hex 1/4-20 UNC x 3/4
3	STD551025	Washer
4	STD551125	Washer
6	STD541025	Nut
7	7697J	Tube, Plastic
8	7603J	Tray, Battery
9	109596X	Clamp, Hose
10	145211	Bolt, Battery, Frt 1/4-20 X 7.5 zinc
11	145209	Holdown Battery Dash Mount
12	145769	Nut, Push Nylon 1/4" Battery
19	STD551125	Washer, Lock
20	73350400	Nut, Hex, Jam 1/4-20 UNC
21	147430	Harness, Asm Headlight w/4152J
22	4152J	Bulb, Light
24	4799J	Cable, Battery
25	146148	Cable Battery
26	108824X	Fuse
28	145491	Cable, Ground
29	121305X	Switch, Plunger
30	140301	Switch, Ignition
31	124211X	Nut, Ignition
32	141226	Cover, Ignition Switch
33	109310X	Key, Ignition
36	STD601005	Screw
38	140336	Bracket, Switch
39	109553X	Switch, Interlock
40	146059	Harness, Ignition
41	71110412	Bolt Blk Fin Hex 1/4-20 UNC x 3/4
42	131563	Cover, Terminal
43	145673	Solenoid
44	73800400	Nut Lock w/Insert 1/4-20 UNC
45	121433X	Ammeter Rectangular 6 Amp
46	141940	Protection Wire Loop
50	146283	Switch PTO 3PDT Red Delta
55	17490508	Screw Thdrol 5/16-18 X 1/2
70	142291	Harness Eng LTPL Koh Cmd-L HL
80	146685	Harness Clutch EVX

NOTE: All component dimensions given in U.S. inches
1 inch = 25.4 mm

REPAIR PARTS

TRACTOR -- MODEL NUMBER 917.252590

CHASSIS AND ENCLOSURES



REPAIR PARTS

TRACTOR - - MODEL NUMBER 917.252590

CHASSIS AND ENCLOSURES

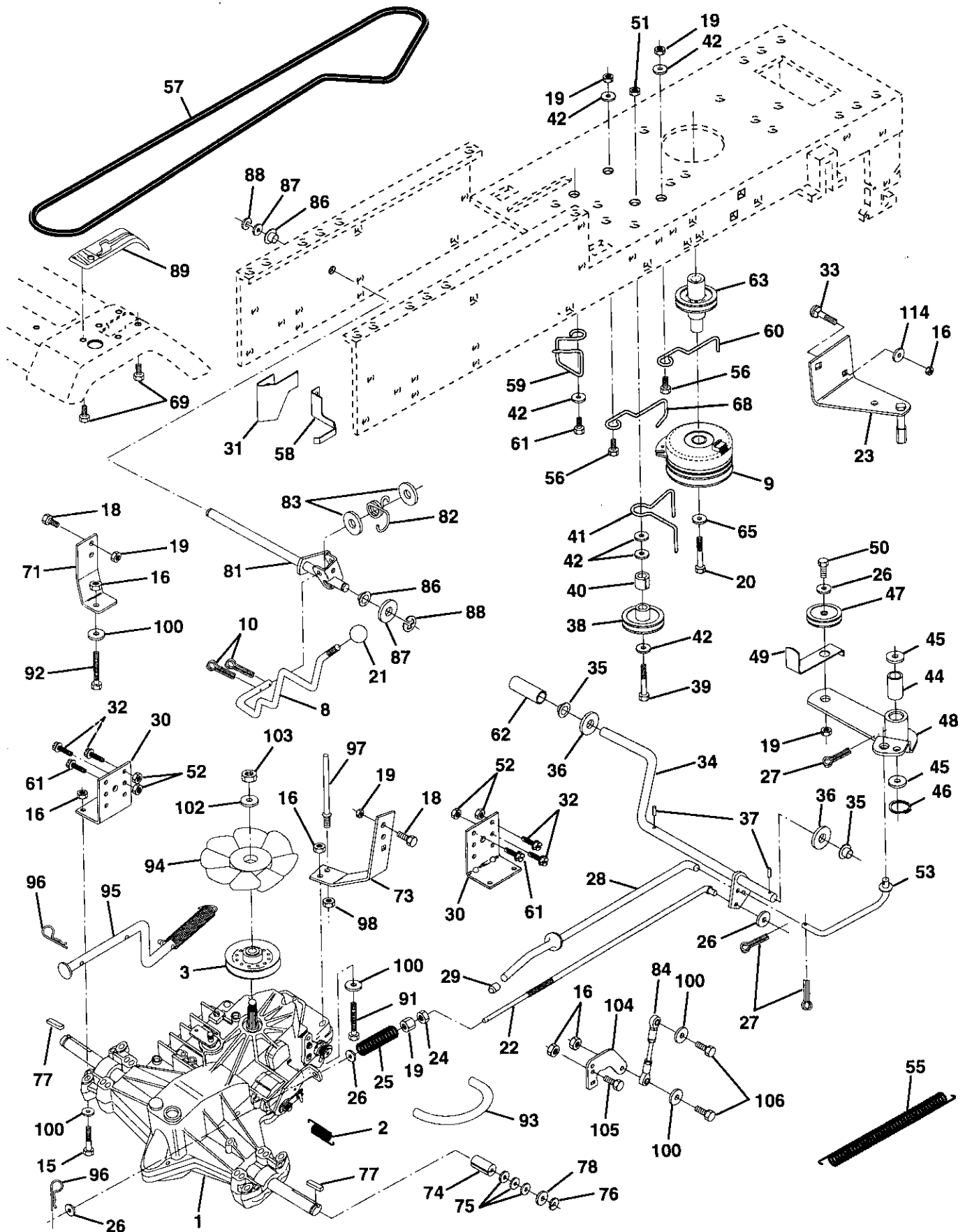
KEY NO.	PART NO.	DESCRIPTION
1	145501	Chassis Wldmt. 11Ga.
2	140356	Drawbar Stretch 94
3	17490612	Screw Thdrol. 3/8-16 x 3/4 Ty-Tt
4	19131216	Washer 13/32 x 3/4 x 16 Ga.
6	145206	Saddle Lt Shift Fender
8	126471X	Clip Insulator .406 Mtg Hole
9	140621	Dash Private Label
10	72140608	Bolt RdHd Sqnk. 3/8-16 x 1
11	135464	Panel Dash LH
12	145660	Clip Tinnerman Grille P/L
13	126276X	Panel Dash Rh
14	17490608	Screw Thdrol. 3/8-16 x 1/2 Ty-Tt
17	144983X459	Hood Pnt w/side Louver
20	145210	Plate Mtg Battery/Fuel Tank
23	124028X	Bushing Snap Nyl. Blk Fuel Line
24	74780616	Bolt Fin Hex 3/8-16 Unc x 1 Gr. 5
25	19131312	Washer 13/32 x 13/16 x 12 Ga.
26	73800600	Nut Lock Hex w/Ins 3/8-16 Unc
28	145198X459	Grill w/clips MS-459
29	145199	Lens Grille
30	140002X459	Fender Pnt Ms-459
31	137113	Bracket Fender
33	145244X459	Footrest Pnt. Lh
34	145243X459	Footrest Pnt. Rh
35	72110606	Bolt RdHd Sht. Sqnk. 3/8-16 x 3/4
37	17490516	Screw Thdrol 5/16-18 x 1
38	139886	Bracket Asm. Pvt. Lh Mwr. Rear
39	139887	Bracket Asm. Pvt. Rh Mwr. Rear
44	140675	Strap Asm Fender
47	105531X	Nut Push Nylon
48	138096	Rivet Push Plate D Plastic Blk
49	17490412	Screw Hex Wsh. Thdrol. 1/4-20 x 3/4
50	142779	Brace
51	73800400	Nut Lock Hex W/Ins. 1/4-20
52	19091416	Washer 9/32 x 7/8 x 16 Ga.
53	145201	Bracket Grille Pickoff LH
54	17030814	Screw Lock Spider #8 x 7/8
55	145202	Bracket, Grill Pickoff RH
57	74780412	Bolt Fin Hex 1/4-20 x 3/4
58	140806	Air Duct Private Label
59	110436X	Bushing Snap Split Blk
68	73510400	Nut Keps Hex 1/4-20 UNC
--	5479J	Plug Button Blk .359 Dia. Choke
100	105037X	Strip Foam 18"

NOTE: All component dimensions given in U.S. inches
1 inch = 25.4 mm

REPAIR PARTS

TRACTOR - - MODEL NUMBER 917.252590

DRIVE



REPAIR PARTS

TRACTOR - - MODEL NUMBER 917.252590

DRIVE

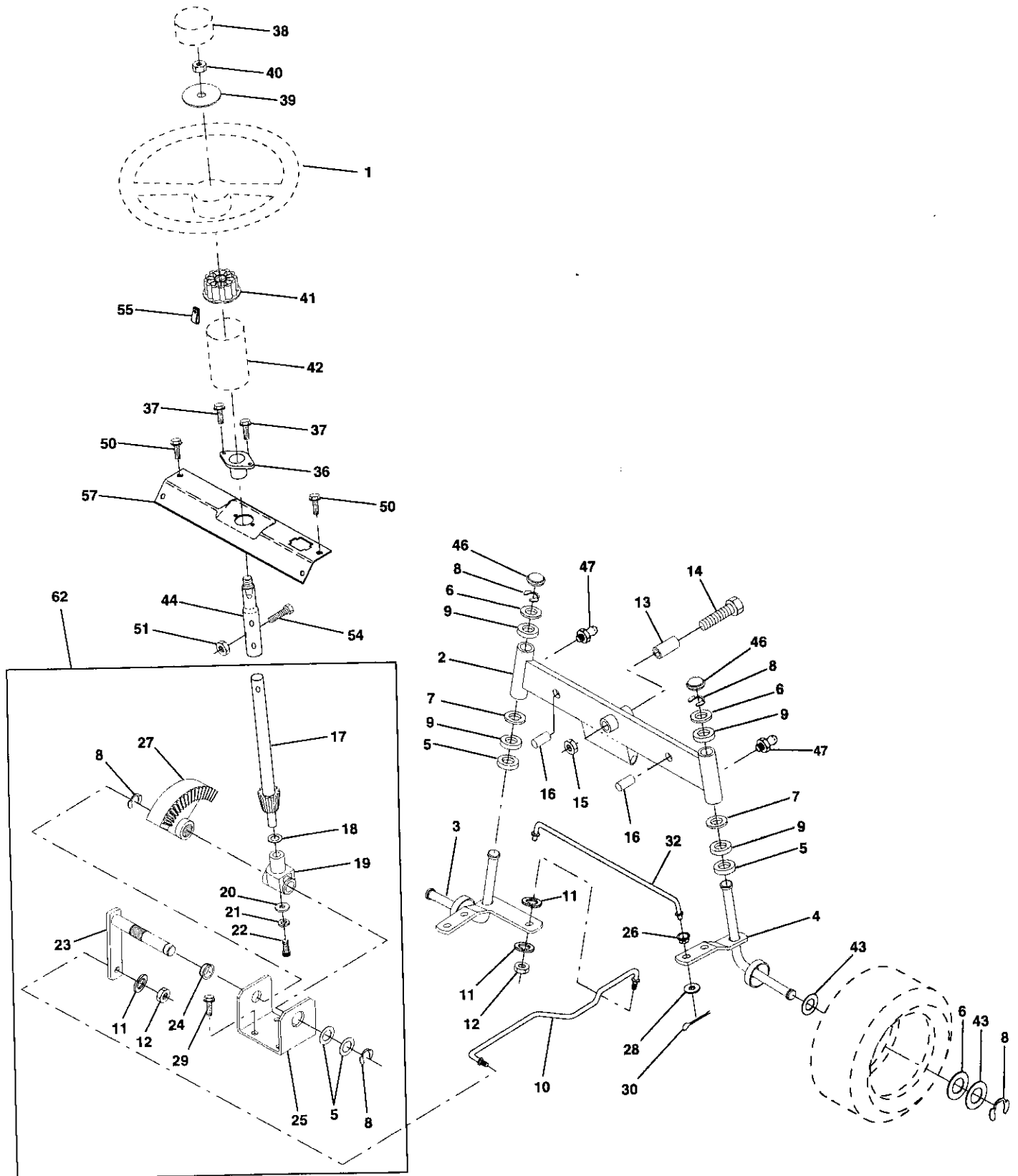
KEY NO.	PART NO.	DESCRIPTION	KEY NO.	PART NO.	DESCRIPTION
1	144436	Transaxle Assembly	58	140470	Keeper Bolt Lh Hydro 0750. 18/20"
2	142431	Spring, Return, Brake	59	140312	Keeper, Center Span
3	143995	Pulley, Transaxle	60	121218X	Keeper Belt Engine LH BZP/Zinc
8	141002	Rod Shift Hydro LT	61	17490612	Screw Thdrol. 3/8-16 x 3/4 Ty. TT
9	145028	Clutch Electric EVX LT Mag 5217-2	62	8883R	Cover, Pedal
10	76020416	Pin Cotter 1/8 x 1 CAD	63	145868	Pulley, Clutch Electric EVX
15	74780544	Bolt Fin Hex 5/16-18 Unc	64	M010110110	Bolt, Hex M10-1.5 X 110
16	73800500	Nut Lock Hex W/Ins. 5/16-18 Unc	65	10040700	Washer
18	74780616	Bolt Fin Hex 3/8-16 Unc x 1 Gr. 5	67	74760616	Bolt Fin Hex 3/8-16 X 1
19	73800600	Nut Lock Hex W/Wsh 3/8-16 Unc	68	105730X	Keeper Belt Engine BZP/Zinc
21	130564	Knob, Deluxe 1/2-13	69	142432	Screw
22	145627	Rod, Brake Hydro	71	140158	Strap Torque Lh Hydro 18/20" T
23	140275	Bracket Asm Clutch Mtg EVX	73	140157	Strap Torque Rh Hydro 18/20" T
24	73350600	Nut, Hex Jam 3/8-16 Unc	74	121199X	Spacer, Split
25	106888X	Spring, Brake Rod	75	121749X	Washer 25/32 x 1-1/4 x 16 Gauge
26	19131316	Washer	76	12000001	E-Ring
27	76020412	Pin Cotter 1/8 x 3/4 CAD.	77	123583X	Key, Square
28	145204	Rod, Parking Brake	78	121748X	Washer 25/32 x 1-5/8 x 16 Gauge
29	124236X	Cap, Parking Brake	81	140154	Shaft Asm. Cross Hydro 20" Tires
30	130807	Bracket, Transaxle	82	123782X	Spring Torsion T/A
31	127275X	Keeper Belt Lh	83	19171216	Washer 17/32 x 3/4 x 16 Ga.
32	74760512	Bolt Hex Hd 5/16-18 Unc x 3/4	84	140548	Rod, Tie Hydro 20" Tires
33	72140506	Bolt Rdhd Sqnk 5/16-18 X 3/4	86	71208	Bushing Rod Strig. 629/632 ID
34	122424X	Shaft, Foot Pedal	87	19212016	Washer 21/32 x 1-1/4 x 16 Ga.
35	120183X	Bearing, Nylon	88	12000008	Ring Klip #5304-62
36	19211616	Washer	89	139989	Console, Shift
37	1572H	Pin, Roll	91	74780536	Bolt Fin Hex 5/16-18 x 2-1/4
38	123674X	Pulley, Idler, Flat	92	74780524	Bolt Fin Hex 5/6-18 Unc x 1-1/2
39	74760644	Bolt	93	142564	Line Fuel Hydro 4"
40	4470J	Spacer, Split	94	140462	Fan, Hydro 7"
41	109070X	Keeper, Belt Retainer	95	144643	Control Bypass Hydro 20" Tires
42	19131312	Washer 13/32 x 13/16 x 12 Gauge	96	4497H	Retainer Spring 1" Zinc/Cad
44	105706X	Bearing, Nylon	97	140469	Keeper Bolt Rh Hydro 0750. 18/20"
45	110812X	Washer, Hardened	98	73510600	Nut Keps Hex 3/8-16 Unc
46	12000039	Ring, Klip	100	19111216	Washer 11/32 x 3/4 x 16 Ga.
47	127783	Pulley, Idler, V-Groove	102	141322	Washer Bellville .501D x 1.50D
48	123789X	Bellcrank Assembly	103	50831	Nut Nylon Insert 1/2-20 Unf.
49	123205X	Retainer, Belt	104	140156	Arm, Control Hydro
50	74760624	Bolt	105	71070516	Screw Cap Hex 5/16 x 18 x 1
51	73680600	Nut Crownlock 3/8-16 UNC	106	74780520	Bolt Fin Hex 5/16-18 Unc x 1-1/4
52	73680500	Nut, Crownlock 5/16-18 Unc	114	72110608	Bolt Rdhd Sqnk 3.8-16 X 1 Gr. 5
53	105710X	Link, Clutch			
55	105709X	Spring, Return, Clutch			
57	140294	V-Belt, Ground Drive			

NOTE: All component dimensions give in U.S. inches.
1 inch = 25.4 mm.

REPAIR PARTS

TRACTOR - - MODEL NUMBER 252590

STEERING ASSEMBLY



REPAIR PARTS

TRACTOR - - MODEL NUMBER 252590

STEERING ASSEMBLY

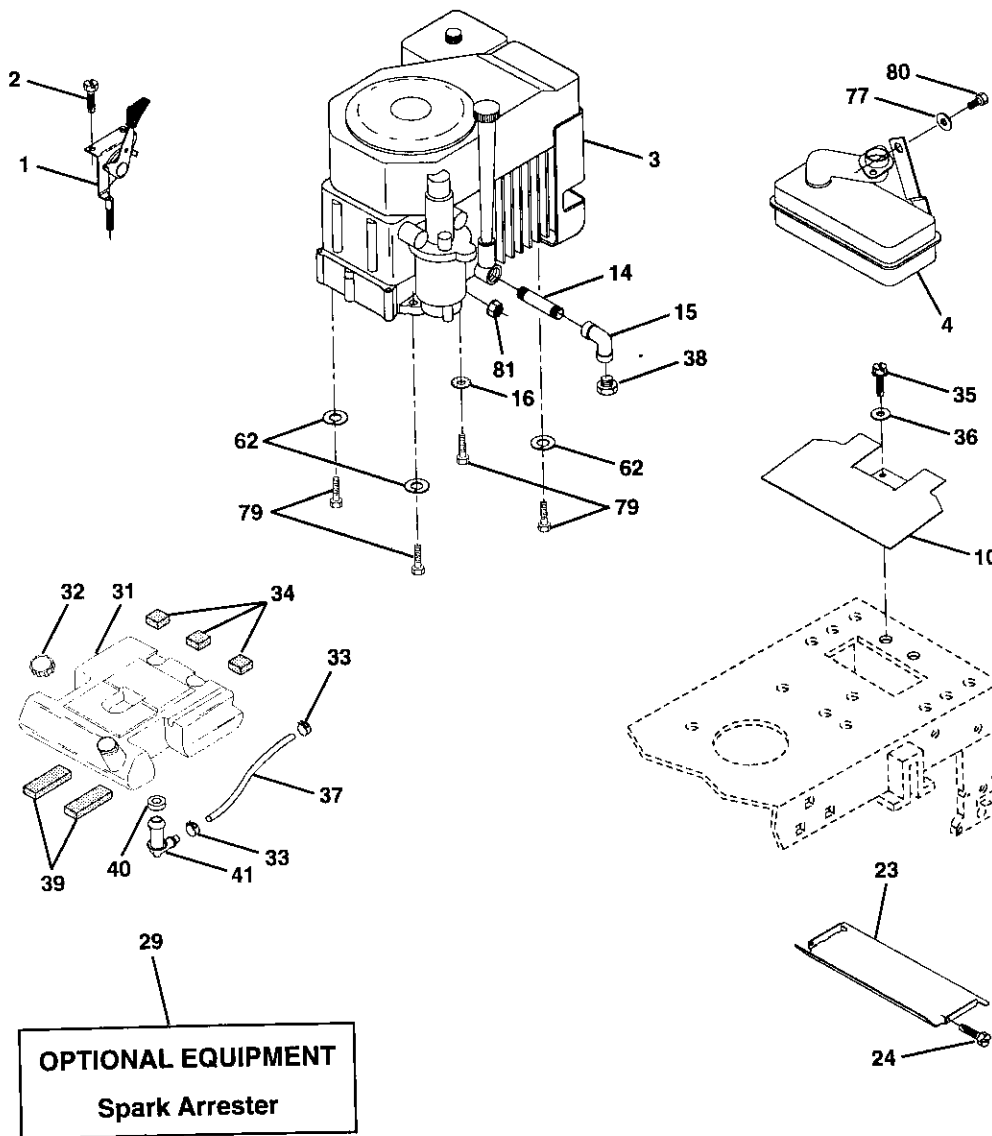
KEY NO.	PART NO.	DESCRIPTION
1	121472X	Wheel Steering Auto Blk
2	142033	Axle Asm Fr LT W/gzks 38/42
3	135227	Spindle Asm LH
4	135228	Spindle Asm RH
5	6266H	WasherThrust .75 x 1.230
6	121748X	Washer 25/32 X 1-5/8 X 16 Ga
7	19272016	Washer 27/32 X 1-1/4 X 16 Ga
8	12000029	Ring Klip #t5304-75
9	3366R	Bearing Col Strg Blk
10	130468	Link Drag Sol Ball Jt 20 064
11	10040600	Washer Lock Hvy Hlcl Spr 3/8
12	73610600	Nut Fin Hex 3/8-24 Unf
13	110438X	Spacer Bearing Axle Front
14	74011056	Bolt Hex 5/8-11 Unc X 3-1/2
15	73901000	Nut Lock Flange 5/8-11 Unc
16	132624	Pin Axle 5/8 X 1 55/1 54 Lg
17	140176	Shaft Asm Strg Private Label
18	57079	Washer Thrust 515x 750x 033
19	124035X	Support Shaft
20	126684X	Washer Shim 1/4 X 5/8 X 062
21	10040400	Washer Lock Hvy Helical 1/4
22	71070410	Screw Hex Socket 1/4-20 X 5/8
23	127501	Shaft Asm Pittman
24	109816X	Nyliner Snap In
25	124036X	Bracket Steering
26	126847X	Bushing Link Drag Blk Lr
27	136874	Gear Sector 22 Teeth
28	19131416	Washer 13/32 x 7/8 x 16 Ga.
29	17490612	Screw Thdrol 3/8-16x3/4 Ty-tt
30	76020412	Pin Cotter 1/8 x 3/4 Cad
32	130465	Rod Tie Wire Form 19 75 Mech
36	102803X	Bushing Steering
37	17431008	Screw Slftp #10-16 X 1/2 Ty-b
38	126805X	Cap Wheel Steer
39	19133808	Washer 13/32 x 2-3/8 x 8 Ga
40	7810H	Nut Lock Center 3/8-24 Unf
41	104820X	Adapter Wheel Strg .640/.635
42	140216	Boot Shaft Steering
43	121749X	Washer 25/32 X 1 1/4 X 16 Ga
44	147392	Shaft Extension Steering LR/LT
46	121232X	Cap Spindle Fr Top Blk
47	6855M	Fitting Grease
50	17490412	Screw Hex Wsh Thdrol 1/4-20 x 3/4
51	73800500	Nut Lock Hex W/Ins. 5/16-18 Unc P
54	74780520	Bolt Fin Hex 5/16-18 Unc 6 x 1-1/4
55	140285	Clip Tinnerman
57	140172	Support Shaft Steering
62	149685	Kit Steering Assembly, Service

NOTE: All component dimensions given in U.S. inches
1 inch = 25.4 mm

REPAIR PARTS

TRACTOR - - MODEL NUMBER 917.252590

ENGINE



KEY NO.	PART NO.	DESCRIPTION
1	147025	Control, Throttle
2	17720410	Screw, Hex Head, Thread Cutting 1/4-20 x 5/8
3	140846	Engine, Kohler Model No. CV15S, Type No. PS41508
4	137350	Muffler, Exhaust
10	145552	Shield Heat
14	13280328	Nipple, Pipe
15	13200300	Elbow, Standard 90°, 3/8-18 NPT
16	STD551231	Washer
23	128953	Shield, Heat
24	STD601005	Screw
29	137180	Arrester, Spark
31	141069	Tank, Fuel
32	123549X	Cap Assembly, Fuel
33	123487X	Clamp, Hose

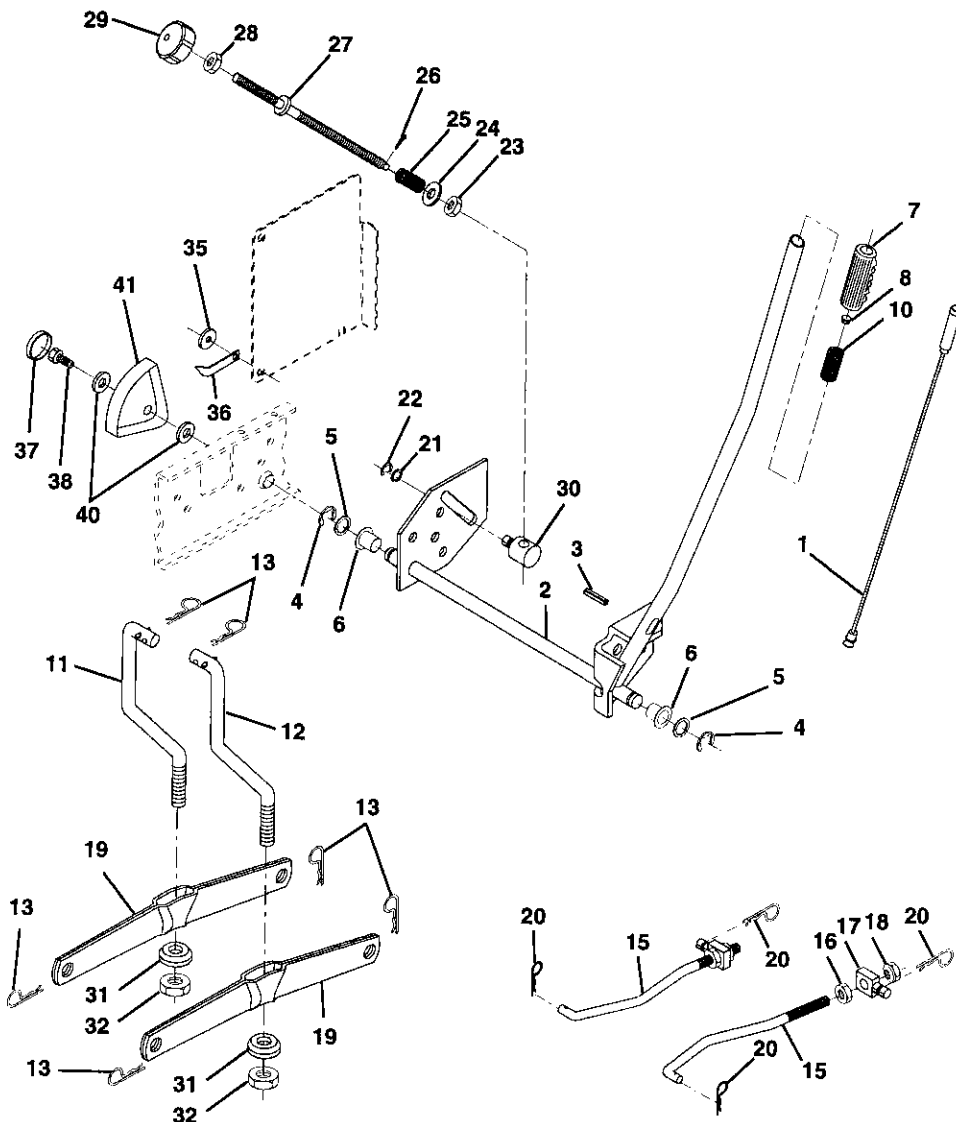
KEY NO.	PART NO.	DESCRIPTION
34	106082X	Spacer, Pad
35	17490512	Screw Thrdrol 5/16-18 X 3/4
36	19132012	Washer 13/32 X 1-1/4 X 12 Ga
37	8543R	Line, Fuel
38	-----	Plug, Oil Drain (Order From Engine Manufacturer)
39	109227X	Spacer Pad
40	3645J	Bushing
41	139277	Stem, Fuel Tank
62	STD551131	Washer Lock Hvy. Hchl. Spr. 5/16
77	STD551031	Washer 5/16 x 3/4 x 16 Ga.
79	M740108025	Hex Bolt
80	STD523105	Bolt
81	73510400	Nut Keps Hex 1/4-20 UNC

NOTE: All component dimensions given in U.S. inches
1 inch = 25.4 mm

REPAIR PARTS

TRACTOR - - MODEL NUMBER 917.252590

MOWER LIFT



KEY NO.	PART NO.	DESCRIPTION
1	136973	Wire Asm., Inner w/plunger
2	145117	Shaft Asm Lift
3	105767X	Pin Groove
4	12000002	E Ring #5133-62
5	19211621	Washer 21/32 X 1 X 21 Ga
6	120183X	Bearing Nylon
7	125631X	Grip Handle Fluted
8	122365X	Button, Plunger
10	122512X	Spring Cprsn
11	139865	Link Lift Lh Fixed Length
12	139866	Link Lift Rh Fixed Length
13	4939M	Retainer Spring
15	127218	Link Front
16	73350800	Nut Jam Hex 1/2-13 Unc
17	130171	Trunnion Blk Zinc
18	73800800	Nut Lock W/Wsh 1/2-13 Unc
19	139868	Arm Suspension Rear
20	3146R	Spring Retainer
21	19151216	Washer 15/32 X 3/4 X 16

KEY NO.	PART NO.	DESCRIPTION
22	12000037	Ring Klip #T5304-37
23	110807X	Nut Special
24	19131016	Washer 13/32 X 5/8 X 16 Ga
25	2876H	Spring 2-1/8"
26	76020308	Pin Cotter 3/32 x 1/2
27	126971X	Rod Adjust Lift
28	73350600	Nut Hex Jam 3/8-16 Unc
29	138057	Knob Infinite 3/8-16 Unc Black
30	110810X	Trunnion Dp Stop Dbl Thds Plt
31	140302	Bearing Pvt. Lift Spherical
32	73540600	Nut Crownlock 3/8-24
35	120529X	Washer, Nylon .44 x .75 x .032
36	123933X505	Pointer, Height Indicator
37	123935X	Plug, Hole
38	17490512	Scr-Hx Wsh Thdrol 5/16-18 x 3/4 Tyt
40	19112410	Washer 11/32 x 1-1/2 x 10 Gauge
41	123934X	Scale, Height Indicator

NOTE: All component dimensions given in U.S. inches
1 inch = 25.4 mm

REPAIR PARTS

TRACTOR - - MODEL NUMBER 917.252590

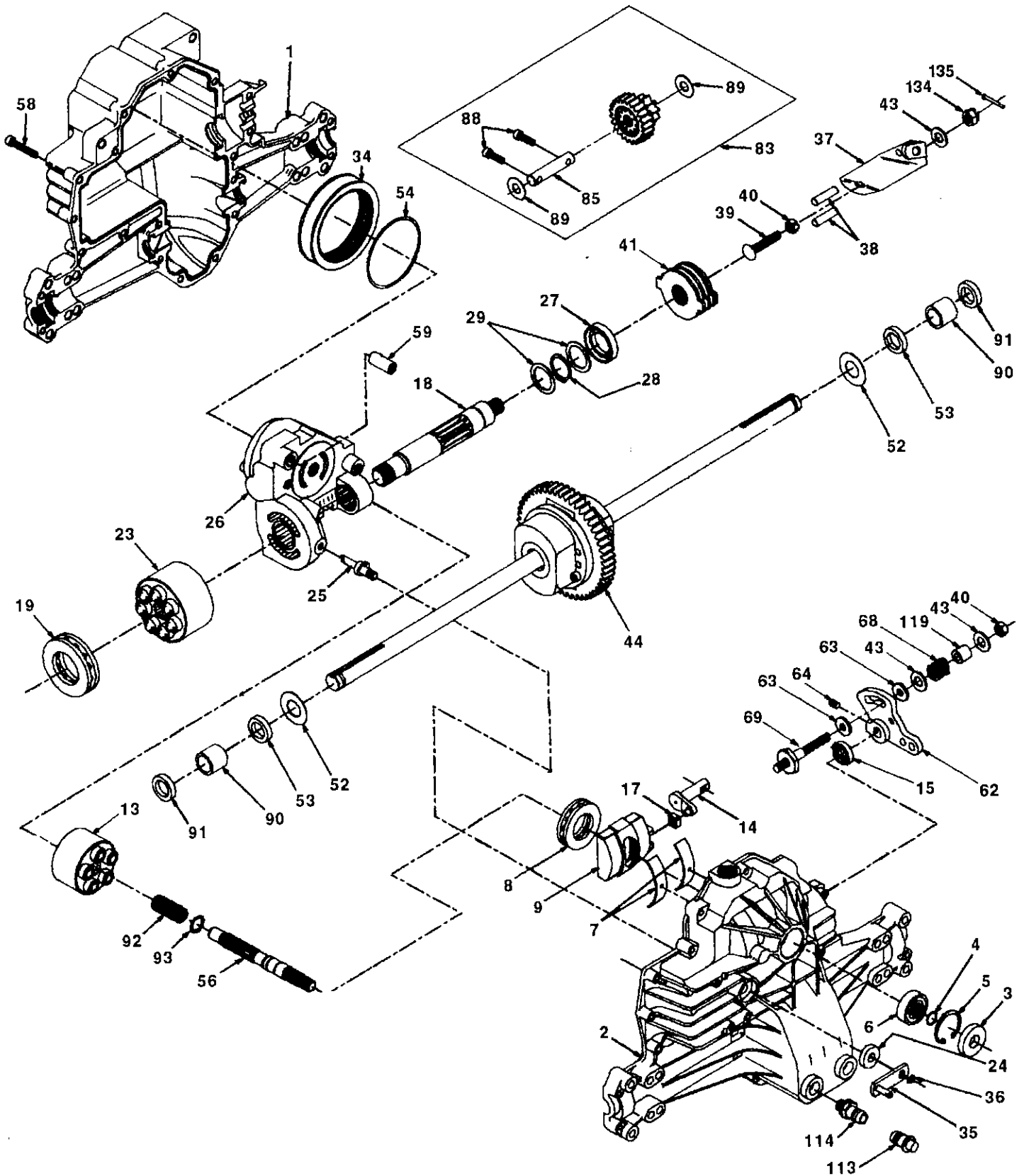
MOWER DECK

KEY NO.	PART NO.	DESCRIPTION	KEY NO.	PART NO.	DESCRIPTION
1	144393	Mower Deck Assembly, 42"	37	STD551037	Washer 13/32 x 13/16 x 16 Gauge
2	STD533107	Bolt	38	132823	Spacer Spring Stop Idler
3	138017	Bracket Asm Fr. Sway Bar	40	STD541437	Nut
4	138440	Bracket Asm Deck 42" Sway Bar	44	140088	Guard, Mandrel, LH
5	STD624008	Retainer Spring	46	137729	Screw, Thd. Roll 1/4-20 X 5/8
6	130832	Arm, Suspension, Rear	54	133943	Washer, Hardened
8	850857	Bolt 3/8-24 x 1.25 Grade 8	55	140084	Arm, Idler
9	STD551137	Washer, Lock	56	122052X	Spacer, Retainer
10	140296	Washer, Hardened	59	141043	Guard Tuv Idler
11	134149	Blade, Mulching, 42" Mower Deck	61	131950	Spring Ext Elect Cl 38 & 42" Deck
12	129895	Bearing, Ball	68	144200	V-Belt, 42" Mower
13	137645	Shaft Assembly, Mandrel, Vented (Includes Key Number 12)	83	120958X	Washer Sintered
14	128774	Housing, Mandrel, Vented	84	144394	Keeper, Belt Idler Fixed
15	110485X	Bearing, Ball, Mandrel	85	72140620	Bolt, Carriage 3/8-16 x 2-1/2 Gr. 5
16	140329	Stripper, Vented Mower Deck	101	136420	Mulcher Cover
17	72110618	Bolt, Carriage 3/8-16 x 2-1/4	102	71161010	Screw
18	72140505	Bolt, Carriage 5/16-18 x 5/8	103	19061216	Washer #10
19	132827	Bolt, Shoulder	104	STD551110	Washer, Lock
20	136888	Baffle, Vortex	105	130758	Latch Assembly, Bagger
21	STD541431	Nut	106	2029J	Nut, Weld
22	134753	Stiffener Bracket	111	140353	Bracket, Gauge, Wheel LH
23	131267	Bracket, Deflector	112	132262	Bracket, Gauge, Wheel RH
24	105304X	Cap, Sleeve	113	17490512	Screw Thdrol 5/16-18 x 3/4 Ty.T
25	123713X	Spring, Torsion, Deflector	114	73510500	Nut, Keps 5/16 - 18 UNC
26	110452X	Nut, Push	115	72110504	Bolt, Carriage 5/16 UNC x 1/2
27	130968	Shield, Deflector	116	137644	Bolt, Shoulder
28	19111016	Washer 11/32 x 5/8 x 16 Gauge	117	133957	Wheel, Gauge, Donut
29	131491	Rod, Hinge	118	73930600	Nut, Locking 3/8 - 16
30	138776	Screw Thdrol. Hex Head Zinc Mower	119	19121414	Washer 3/8 x 7/8 x 14 Ga.
31	129963	Washer, Spacer	121	143723	Bracket Extruded Gauge Wheel
32	129861	Pulley, Mandrel	125	76020816	Pin Cotter 1/4 X 1 Plated
33	137266	Nut, Toplock Flanged	--	130794	Mandrel Assembly (Includes Key Numbers 8-10, 12-15, 31 and 33))
34	STD533727	Bolt	--	145452	Mower Deck, Complete (Std Deck - order mulching and gauge wheel components separately - key nos. 101 thru 106 and 111 thru 121)
35	133835	Fastner, Christmas Tree			
36	131494	Pulley, Idler, Flat			

NOTE: All component dimensions given in U.S. inches
1 inch = 25.4 mm

REPAIR PARTS

TRACTOR - - MODEL NUMBER 917.252590
HYDRO GEAR TRANSAXLE - MODEL NUMBER 310-0750



REPAIR PARTS

TRACTOR - - MODEL NUMBER 917.252590 HYDRO GEAR TRANSAXLE - MODEL NUMBER 310-0750

KEY PART NO. NO.	DESCRIPTION	KEY PART NO. NO.	DESCRIPTION
1 142930	Housing, Lower	43 142884	Washer 7/16 x 7/8 x .060
2 142931	Assembly, Upper Housing	44 142959	Differential Assembly
3 142932	Seal, Lip	52 142960	Washer 3/4 x 1.5 x .03
4 142928	Ring, Wire Retaining	53 142961	Seal .75 x 1.25 x .250
5 142933	Ring, Retaining	54 142962	O-Ring .103 x 2.987 ID
6 142934	Bearing, Shaft Ball	56 142963	Shaft, Input
7 142935	Bearing, Cradle	58 142964	Bolt 1/4-20 x 1.38
8 142936	Bearing, Thrust 30 x 52 x 13	59 142965	Pin .5 OD x .43 ID x .750
9 142937	Swashplate, Variable	62 142966	Arm, Control
13 142938	Block, Cylinder Assembly	63 142967	Puck, Dampener
14 142939	Arm, Trunnion	64 142920	Set Screw
15 142940	Seal, Lip	68 142969	Spring
17 142941	Guide, Slot	69 144610	Stud 5/16-24
18 142942	Shaft, Motor	83 142971	Jack Shaft Assembly
19 142943	Bearing, Thrust 42 x 68 x 16	85 142972	Jack Shaft
23 142944	Block, Cylinder Assembly	88 142973	Capscrew
24 142945	Seal, Lip 10 x 25 x 7	89 142974	Washer
25 142946	Actuator, Bypass	90 142975	Sleeve Bearing
26 142947	Center Section Assembly Kit	91 142976	Seal, Wiper
27 142948	Seal, Lip 26 x 42 x 8	92 142977	Spring, Block
28 142949	Ring, Retaining	93 142978	Washer, Block Thrust
29 142950	Washer 26 x 35 x 1	113 142917	Cap, Vent Assembly
34 142951	Oil Filter Element	114 142918	Fitting, O-Ring Assembly
35 142952	Arm, Bypass	119 142980	Spacer
36 142953	Ring, Retaining	134 144607	Nut, Castle 5/16-24
37 142954	Arm, Actuating	135 144608	Pin, Cotter
38 142955	Pin, Actuating		
39 142956	Bolt 5/16-24 x 1-3/4		
40 142957	Locknut, Hex 5/16-24 UNJC		
41 142958	Brake Rotor/Stator Kit		

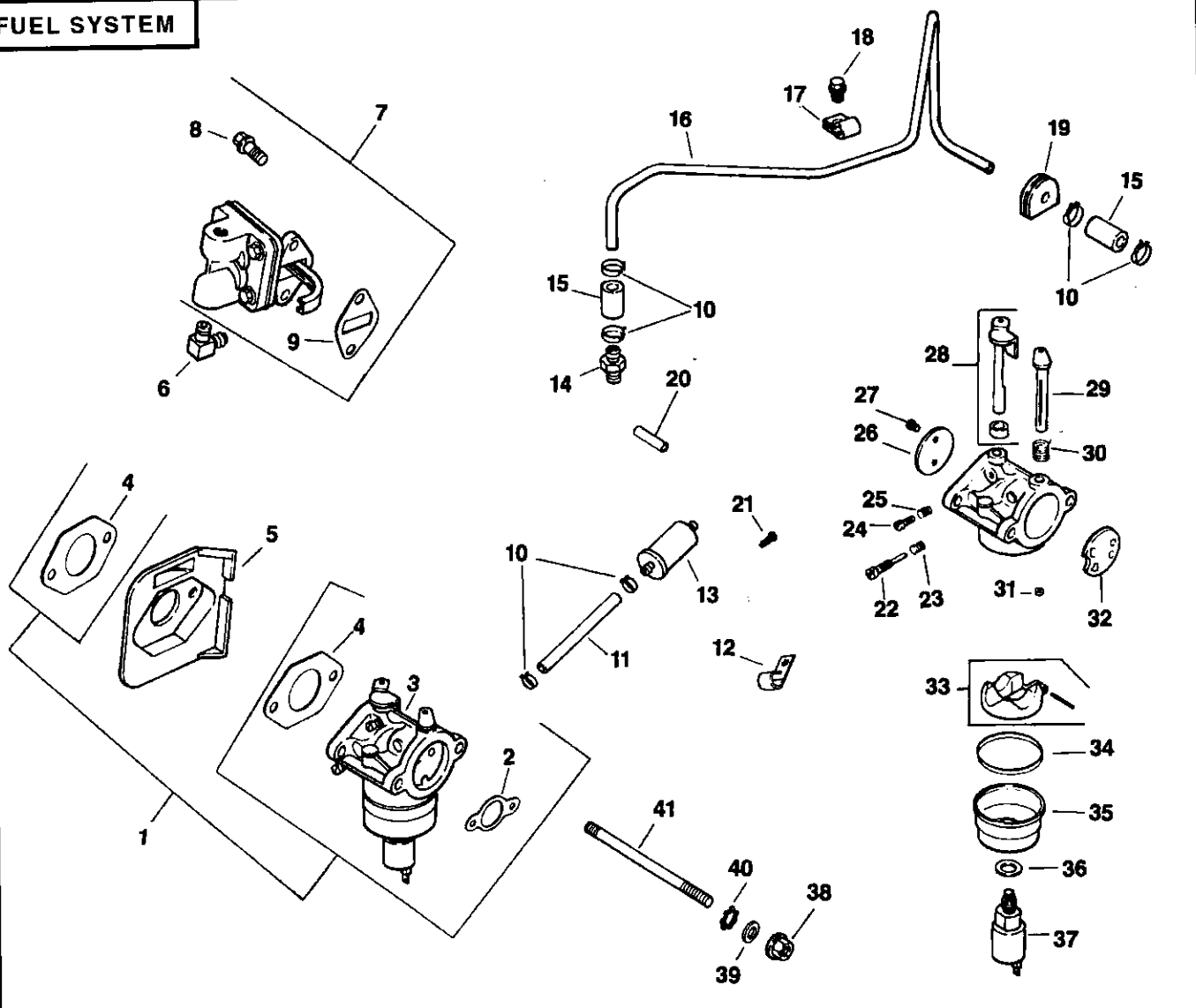
NOTE: All component dimensions given in U.S. inches
1 inch = 25.4 mm

REPAIR PARTS

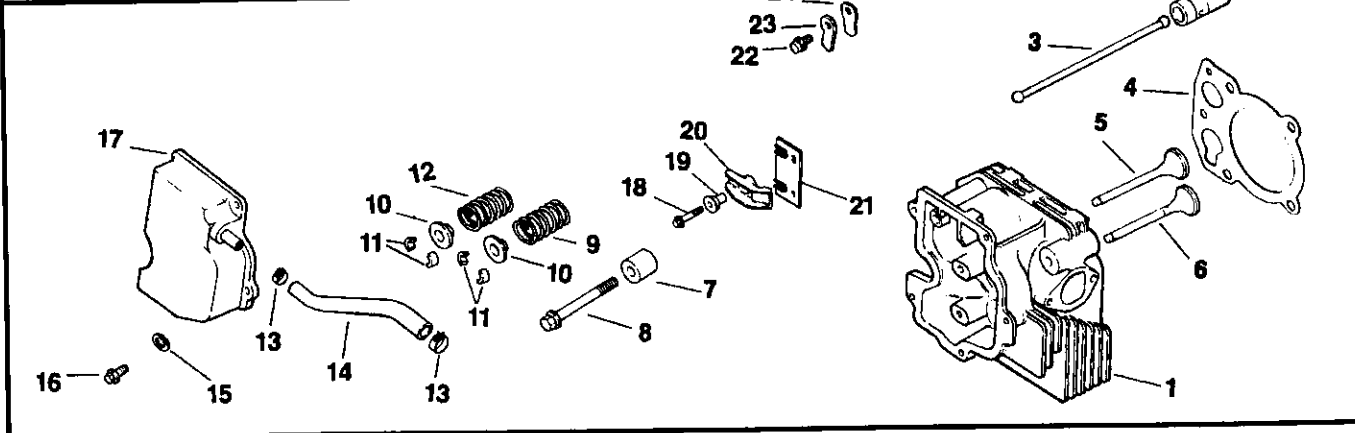
TRACTOR - - MODEL NUMBER 917.252590

KOHLER ENGINE - MODEL NUMBER CV15S, TYPE NUMBER PS41508

FUEL SYSTEM



CYLINDER HEAD, VALVE AND BREATHER



REPAIR PARTS

TRACTOR - - MODEL NUMBER 917.252590

KOHLER ENGINE - MODEL NUMBER CV15S, TYPE NUMBER PS41508

FUEL SYSTEM

KEY NO.	PART NO.	DESCRIPTION
1	12 853 08	Kit, Carburetor (Includes Key Numbers 2 through 4)
2	12 041 02	Gasket, Air Cleaner
3	12 053 09	Carburetor Assembly (For Information Only - Not Available Separately) (Includes Key Numbers 22 thru 37)
4	12 041 01	Gasket, Carburetor (2)
5	12 265 01	Deflector, Heat
6	25 155 02	Connector, Hose
7	12 559 01	Kit, Fuel Pump (Includes Key Numbers 8 and 9)
8	SM-0645020	Screw, Fuel Pump M6 x 1.0 x 20 (2)
9	25 041 09	Gasket, Fuel Pump
10	X-426-9	Clamp, Hose (6)
11	52 353 22	Fuel Line, Flexible
12	47 154 01	Clip, Cable
13	25 050 02	Filter, Fuel
14	X-380-1	Connector, Hose
15	12 353 01	Line, Fuel, Rubber, 1-1/4" (2)
16	12 123 01	Line, Fuel, Metal
17	12 154 01	Clamp, Fuel Line
18	M-0545010	Screw, Fuel Line Clamp
19	12 313 01	Grommet, Fuel Line
20	12 431 01	Sleeve, Insulating
21	12 086 07	Screw, Ground Wire
22	12 368 01	Needle, Idle, Fuel Adjust
23	12 089 09	Spring, Idle Fuel
24	12 086 04	Screw, Idle Speed Adjust
25	12 089 09	Spring, Idle Speed
26	12 146 03	Plate, Throttle
27	25 086 27	Screw, Throttle Plate (2)
28	12 144 09	Shaft, Throttle with Lever and Seal
29	12 144 08	Shaft, Choke
30	12 089 10	Spring, Choke Return
31	12 337 01	Jet, Main
32	12 146 02	Plate, Choke
33	12 757 02	Kit, Float
34	12 041 05	Gasket, Bowl
35	12 104 01	Bowl, Fuel
36	12 041 06	Gasket, Bowl Retainer Screw
37	12 757 09	Kit, Solenoid Assembly
38	SM-0641060	Nut, Carburetor M6 x 1.0 (2)
39	X-25-63	Washer, Plain 1/4
40	X-22-11	Washer, Internal Tooth 1/4
41	M-0629122	Stud, Carburetor M6 x 1.0 x 110 (2)

NOT ILLUSTRATED

--	12 757 01	Kit, Carburetor Repair
--	12 755 09	Kit, High Altitude Jet
--	12 518 05	Lead, Solenoid, Black, 5", 14 Gauge, Uninsulated Push-On Tabs
--	41 518 34	Lead, Ground, Green, 5", 18 Gauge Insulated Grip Barrel Eyelets

CYLINDER HEAD, VALVE AND BREATHER

KEY NO.	PART NO.	DESCRIPTION
1	12 318 02	Head, Cylinder
2	12 351 01	Lifter, Valve (2)
3	12 411 01	Rod, Push (2)
4	12 041 10	Gasket, Cylinder Head
5	12 017 01	Valve, Intake, Standard Size
	12 017 02	Valve, Intake, .25" Oversize
6	12 016 01	Valve, Exhaust, Standard
	12 016 02	Valve, Exhaust, .25" Oversize
7	12 112 13	Spacer, Head Bolt Exhaust Port
8	12 086 15	Screw, Cylinder Head M10 x 1.5 x 80 (5)
9	12 089 15	Spring, Exhaust Valve
10	12 173 01	Cap, Valve Spring (2)
11	12 755 03	Kit, Retainer (2)
12	12 089 01	Spring, Intake Valve
13	X-426-9	Clamp, Hose (2)
14	12 326 03	Hose, Breather
15	12 468 05	Washer, Flat
16	SM-0645020	Screw, Valve Cover M6 x 1.0 x 20 (5)
17	12 096 07	Cover, Valve with Nipple
18	M-0640034	Screw, Rocker Arm M6 x 1 x 34 (2)
19	24 194 01	Ball, Rocker Pivot (2)
20	24 186 01	Arm, Rocker (2)
21	12 146 13	Plate, Guide
22	M-0545010	Screw, Breather Reed Retainer M5 x 0.8 x 10
23	12 018 01	Retainer, Breather Reed
24	24 402 03	Reed, Breather

NOTE: All component dimensions given in U.S. inches
1 inch = 25.4 mm

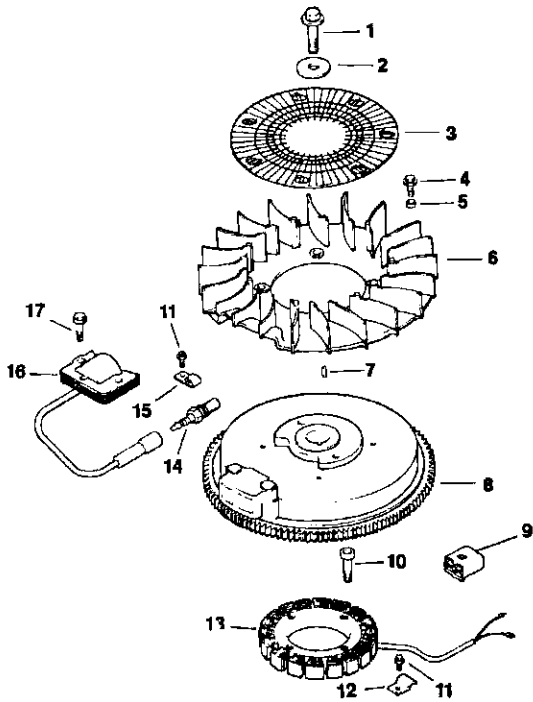
RPM Settings: Low Speed 1500 - 2000
 High Speed 3200 - 3400

REPAIR PARTS

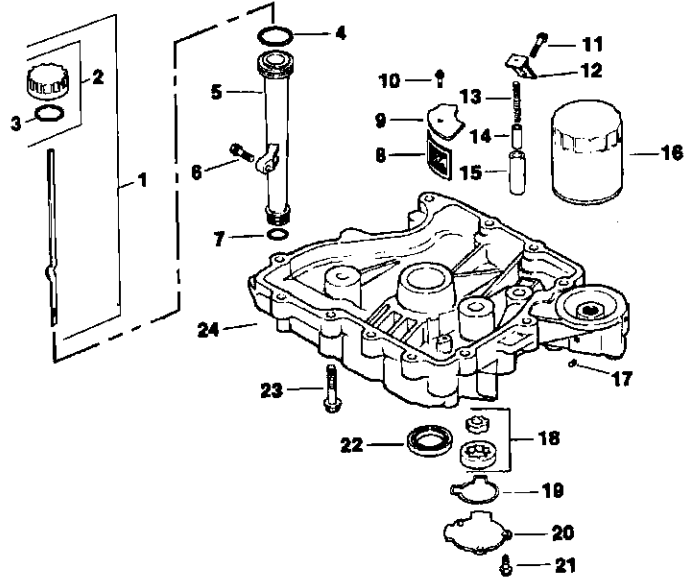
TRACTOR -- MODEL NUMBER 917.252590

KOHLER ENGINE - MODEL NUMBER CV15S, TYPE NUMBER PS41508

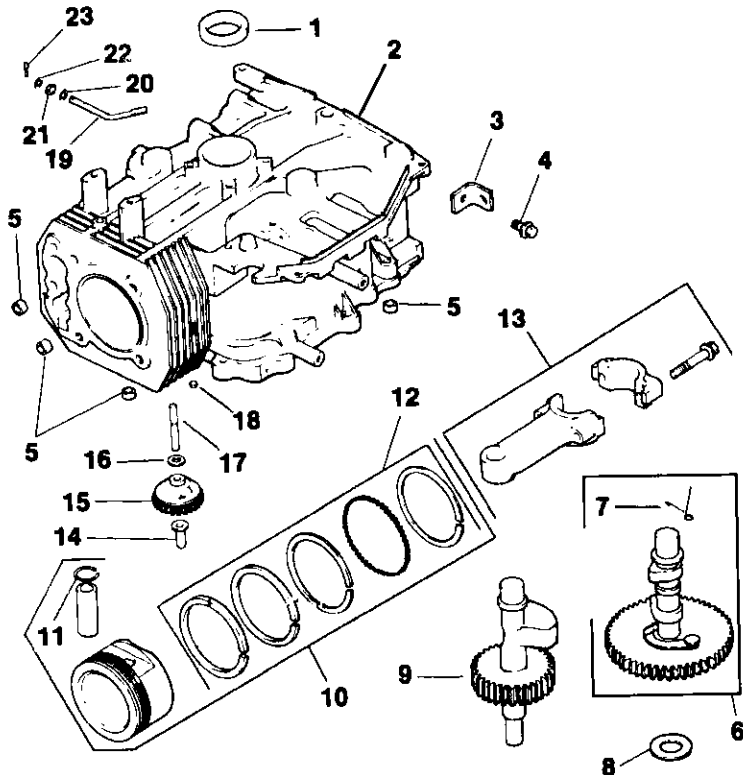
IGNITION / ELECTRICAL



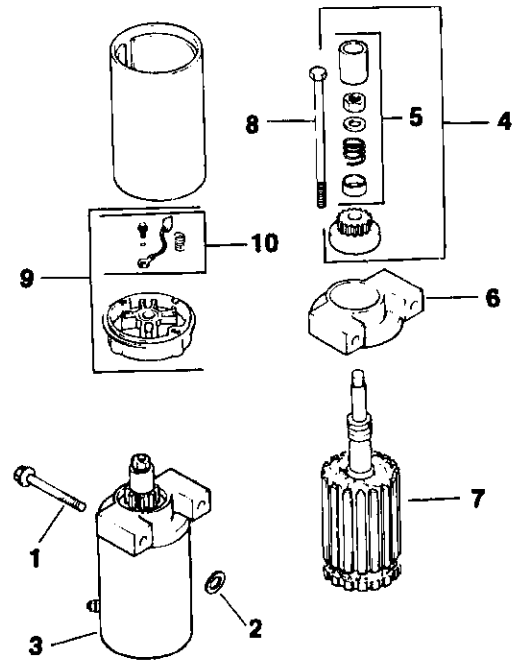
OIL PAN / LUBRICATION



CRANKCASE



STARTING SYSTEM



REPAIR PARTS

TRACTOR - - MODEL NUMBER 917.252590

KOHLER ENGINE - MODEL NUMBER CV15S, TYPE NUMBER PS41508

IGNITION / ELECTRICAL

KEY PART NO.	PART NO.	DESCRIPTION
1	12 086 14	Screw, Flywheel M10 x 1.5 x 45.8
2	12 468 03	Washer, Flywheel
3	12 162 03	Screen, Grass
4	M-0639016	Screw, Fan M6 x 1 x 13 (4)
5	12 112 01	Spacer, Fan (4)
6	12 157 02	Fan
7	X-42-15	Key
8	12 025 25	Flywheel Assembly (4 Contact)
9	41 155 02	Connector
10	M-0548025	Screw, Stator Mounting M5 x 0.8 x 25 (4)
11	M-0545010	Screw, Stator Harness Clip M5 x 0.8 x 10 (2)
12	12 154 02	Clip, Stator Harness
13	12 085 03	Stator Assembly
14	12 132 02	Spark Plug
15	X-728-1	Clip, Cable
16	12 584 01	Module, Ignition
17	SM-0545020	Screw, Ignition Module M5 x 0.8 x 20 (2)

NOT ILLUSTRATED

--	12 518 01	Lead, White, Ground To Kill (19", 18 Gauge, Fully Insulated Push-on Tab and Uninsulated Push-on Tab Terminals)
--	51 755 01	Kit, Diode

OIL PAN / LUBRICATION

KEY PART NO.	PART NO.	DESCRIPTION
1	12 038 01	Dipstick Assembly (Includes Key Numbers 2 and 3)
2	25 755 13	Kit, Oil Fill Cap (Includes Key #3)
3	12 153 03	O-Ring, Dipstick
4	12 153 02	O-Ring, Upper Oil Fill Tube
5	12 123 04	Tube, Oil Fill
6	SM-0545020	Screw, Oil Fill Tube M5 x 0.8 x 20
7	12 153 01	O-Ring, Lower Oil Fill Tube
8	12 162 02	Screen, Oil Pick-up
9	12 096 03	Cover, Oil Pick-up Screen
10	SM-0545016	Screw, Screen Cover
11	M-1051025	Screw, Oil Pump Relief Valve Bracket M10 x 1.5 x 25
12	12 126 02	Bracket, Oil Pump Relief Valve
13	12 089 03	Spring, Oil Pump Relief Valve
14	12 462 01	Piston, Oil Pump Relief Valve
15	12 208 01	Body, Oil Pump Relief Valve
16	12 050 01	Filter, Oil
17	X-75-10	Plug, Square Head, Solid 3/8 NPTF
18	12 393 01	Oil Pump Assembly
19	12 032 04	O-Ring, Oil Pump Cover
20	12 096 02	Cover, Oil Pump
21	SM-0545016	Screw, Oil Pump Cover M5 x 0.8 x 16 (3)
22	12 032 03	Seal, Oil (P.T.O. End)
23	SM-0839045	Screw, Oil Pan M8 x 1.25 x 45 (12)
24	12 199 30	Pan, Oil

CRANKCASE

KEY PART NO.	PART NO.	DESCRIPTION
1	12 032 03	Seal, Crankshaft
2	---	Block, Cylinder (Use Short Block)
3	12 445 02	Strap, Lifting
4	M-0839025	Screw, Lifting Strap M8 x 1.25 x 22
5	12 380 03	Dowel, Locating (4)
6	12 010 02	Camshaft Assembly (Includes #7)
7	12 089 18	Spring, Actuating
8	12 422 08	Shim, Camshaft
	12 422 09	Shim, Camshaft (as required)
	12 422 10	Shim, Camshaft (as required)
	12 422 11	Shim, Camshaft (as required)
	12 422 12	Shim, Camshaft (as required)
	12 422 13	Shim, Camshaft (as required)
	12 422 07	Shim, Camshaft (as required)
9	12 144 19	Shaft, Balance
10	12 874 07	Piston w/Ring Set, Standard
	12 874 08	Piston w/Ring Set .25" Oversize
	12 874 09	Piston w/Ring Set .50" Oversize
11	12 018 02	Retainer, Piston Pin (2)
12	12 108 07	Ring Set, Standard
	12 108 08	Ring Set .25" Oversize
	12 108 09	Ring Set .50" Oversize
13	12 067 01	Connecting Rod, Standard
	12 067 02	Connecting Rod .25" Oversize
14	12 380 01	Pin, Governor Regulating
15	12 043 05	Gear, Governor Assembly
16	SM-0631005	Washer, Governor Gear Thrust
17	12 144 02	Shaft, Governor Gear
18	52 139 09	Plug, Cup
19	12 144 01	Shaft, Governor Cross
20	SM-0631015	Washer, Governor Shaft
21	12 032 01	Seal, Governor Cross Shaft
22	X-25-102	Washer, Plain 1/4
23	12 380 04	Pin, Governor Hitch

STARTING SYSTEM

KEY PART NO.	PART NO.	DESCRIPTION
1	M-0839070	Screw, Bendix Starter M8 x 1/25 x 70 (2)
2	12 468 01	Washer (2)
3	12 098 05	Starter Bendix (Includes #4-10)
4	12 755 12	Kit, Drive (Includes Key Number 5)
5	12 755 06	Kit, Drive Parts
6	12 227 01	Cap, Drive End
7	12 170 02	Armature
8	12 086 02	Screw, Hex Flange
9	12 243 01	Cap, Commutator End (Includes Key Number 10)
10	82 755 28	Kit, Brush and Spring

NOT ILLUSTRATED

--	52 357 01	Lubricant, Starter
----	-----------	--------------------

NOTE: All component dimensions given in U.S. inches
1 inch = 25.4 mm

SEARS

**OWNER'S
MANUAL**

**MODEL NO.
917.252590**

**IF YOU NEED
REPAIR SERVICE
OR PARTS:**

FOR REPAIR SERVICE, CALL
THIS TOLL FREE NUMBER:

1-800-4-REPAIR
(1-800-473-7247)

FOR REPLACEMENT PARTS
INFORMATION AND
ORDERING, CALL THIS
TOLL FREE NUMBER:

1-800-FON-PART
(1-800-366-7278)

CRAFTSMAN®

**15.5 HP
ELECTRIC START
3 in One Convertible
42" MOWER
AUTOMATIC (HYDROSTATIC)
DRIVE
LAWN TRACTOR**

Each tractor has its own model number. Each engine has its own model number.

The model number for your tractor will be found on the model plate located under the seat.

The model number for your engine will be found on the blower housing of the engine.

All parts listed herein may be ordered from any Sears, Roebuck and Co. Service Center/Department and most Retail Stores.

**WHEN ORDERING REPAIR PARTS, ALWAYS GIVE THE
FOLLOWING INFORMATION:**

- **PRODUCT - TRACTOR**
- **MODEL NUMBER - 917.252590**
- **ENGINE MODEL NO. - CV15S-PS41508**
- **PART NUMBER**
- **PART DESCRIPTION**

Your Sears merchandise has added value when you consider Sears has service units nationwide staffed with Sears trained technicians... professional technicians specifically trained to insure that we meet our pledge to you, we service what we sell.