

**REPAIR PARTS MANUAL**  
**MODEL NO. 253201**  
**Lawn Tractor**

---



# HOW TO USE THIS MANUAL

This manual is designed to provide the customer with a means to identify the parts on his/her tractor when ordering repair parts. The illustrations may or may not represent the actual assemblies; therefore, it is not recommended to use this manual as a guide to assemble or disassemble the tractor. Some hardware and parts are drawn larger in order to more readily identify them.

Each tractor has its own model number.

The model number for your tractor can be found on the fender under the seat.

When ordering parts, always give the following information:

- Product - "Tractor"
- Model Number - "253201"
- Part Number
- Part Description

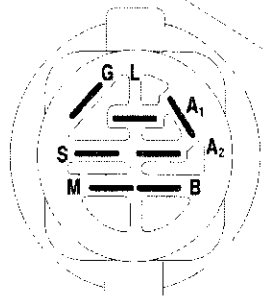
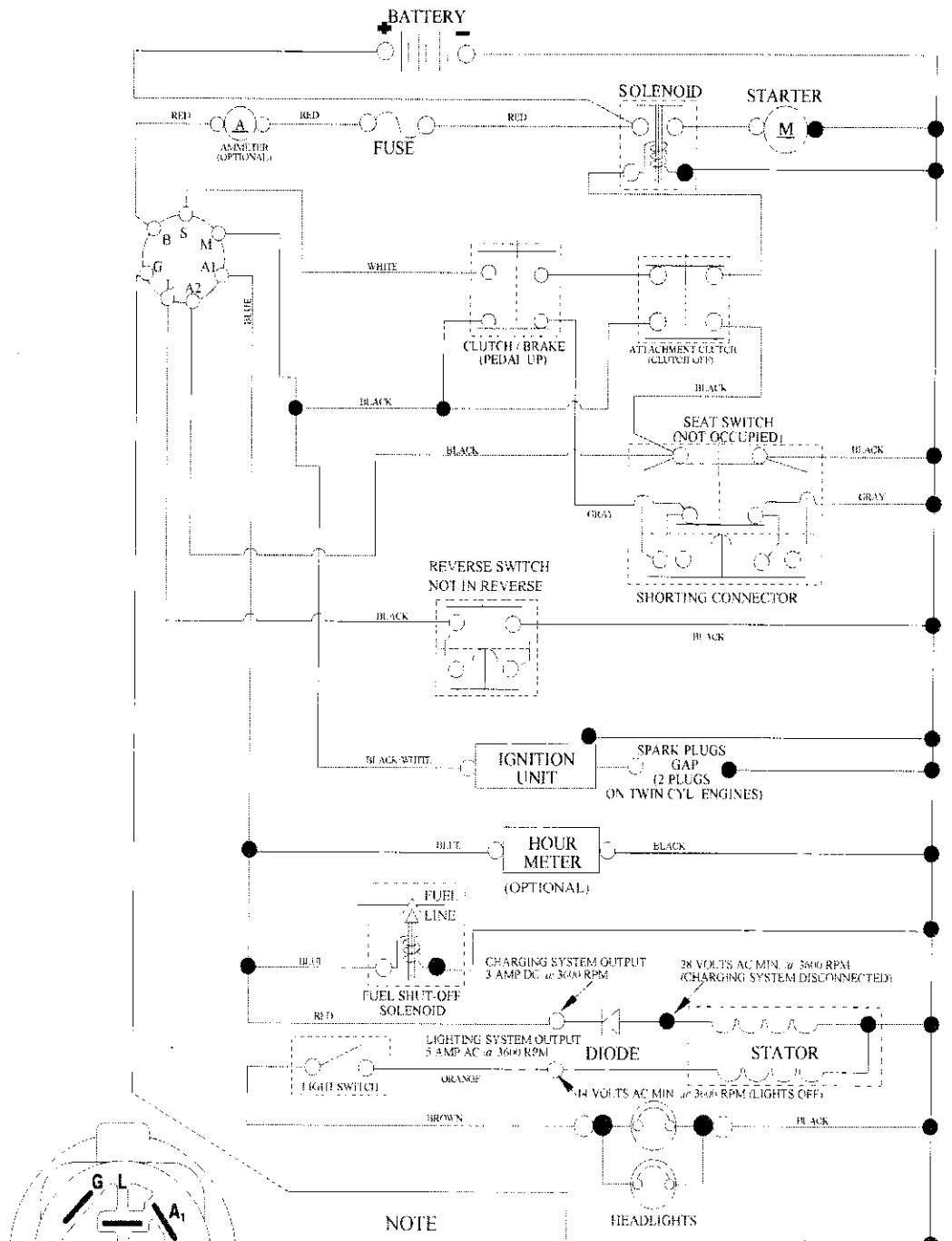
## TABLE OF CONTENTS

<b>SCHEMATIC .....</b>	<b>3</b>
<b>ELECTRICAL.....</b>	<b>4-5</b>
<b>CHASSIS AND ENCLOSURES.....</b>	<b>6-7</b>
<b>DRIVE.....</b>	<b>8-9</b>
<b>STEERING ASSEMBLY.....</b>	<b>10-11</b>
<b>ENGINE.....</b>	<b>12-13</b>
<b>SEAT ASSEMBLY.....</b>	<b>14</b>
<b>DECALS.....</b>	<b>15</b>
<b>MOWER LIFT.....</b>	<b>16-17</b>
<b>MOWER DECK .....</b>	<b>18-19</b>
<b>TRANSAXLE BREAKDOWN .....</b>	<b>20-21</b>
<b>ENGINE BREAKDOWN.....</b>	<b>22-27</b>
<b>WARRANTY.....</b>	<b>BACK COVER</b>

# TRACTOR- -MODEL NO. 917. 253201

## SCHEMATIC

SCH03



IGNITION SWITCH

POSITION	CIRCUIT	"MAKE"
OFF	M-G+A1	
RUN-OVERRIDE	B+A1	
RUN	B+A1	L+A2
START	B+S+A1	

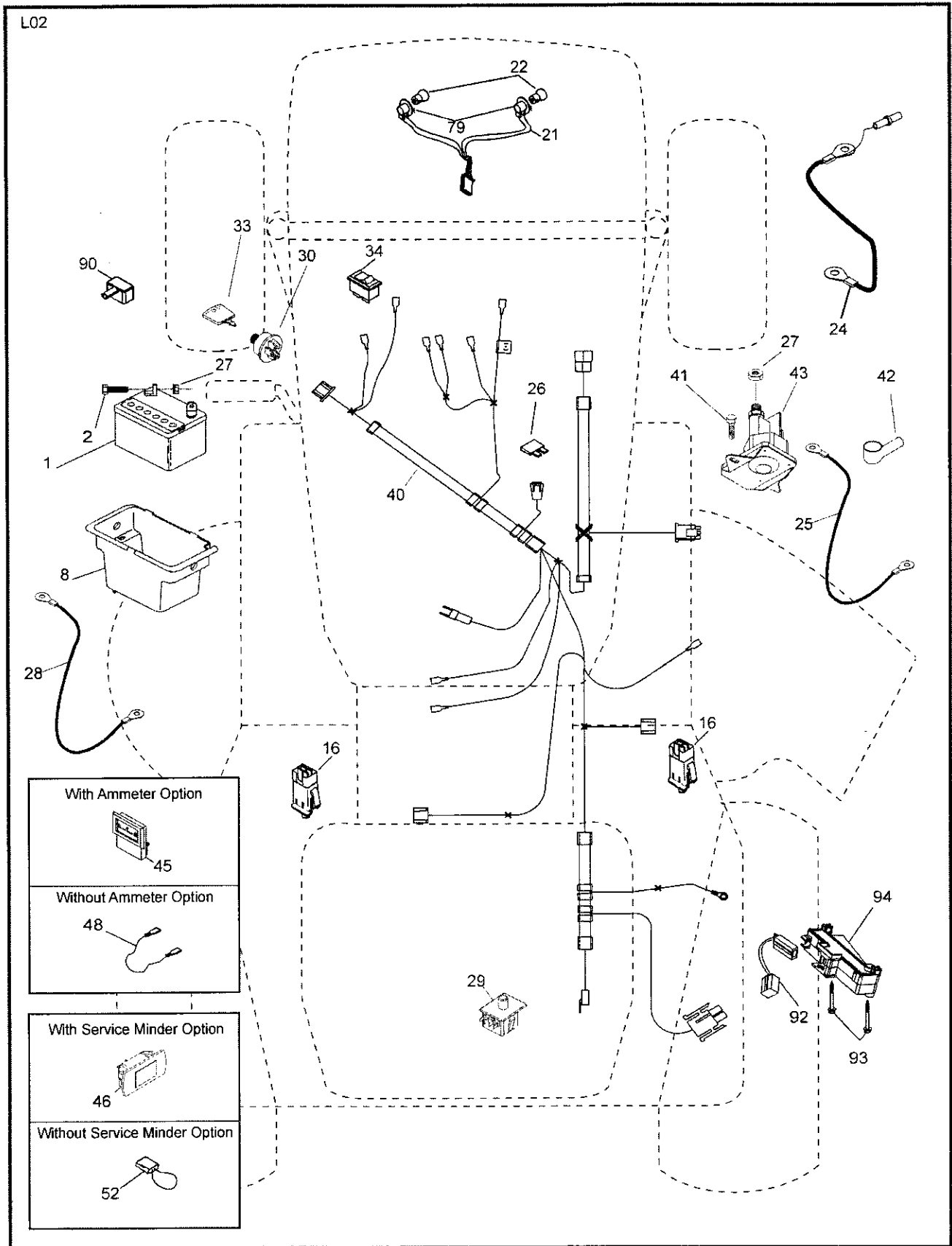
**NOTE**  
YOUR TRACTOR IS EQUIPPED WITH A SPECIAL ALTERNATOR SYSTEM. THE LIGHTS ARE NOT CONNECTED TO THE BATTERY, BUT HAVE THEIR OWN ELECTRICAL SOURCE. BECAUSE OF THIS, THE BRIGHTNESS OF THE LIGHTS WILL CHANGE WITH ENGINE SPEED. AT IDLE THE LIGHTS WILL DIM. AS THE ENGINE IS SPEEDED UP, THE LIGHTS WILL BECOME THEIR BRIGHTEST.

NON-REMOVABLE CONNECTIONS      REMOVABLE CONNECTIONS

WIRING INSULATED CLIPS  
NOTE: IF WIRING INSULATED CLIPS WERE REMOVED FOR SERVICING OF UNIT, THEY SHOULD BE RE-INSTALLED TO PROPERLY SECURE YOUR WIRING.

# TRACTOR- -MODEL NO. 917. 253201

## ELECTRICAL



# TRACTOR- -MODEL NO. 917. 253201

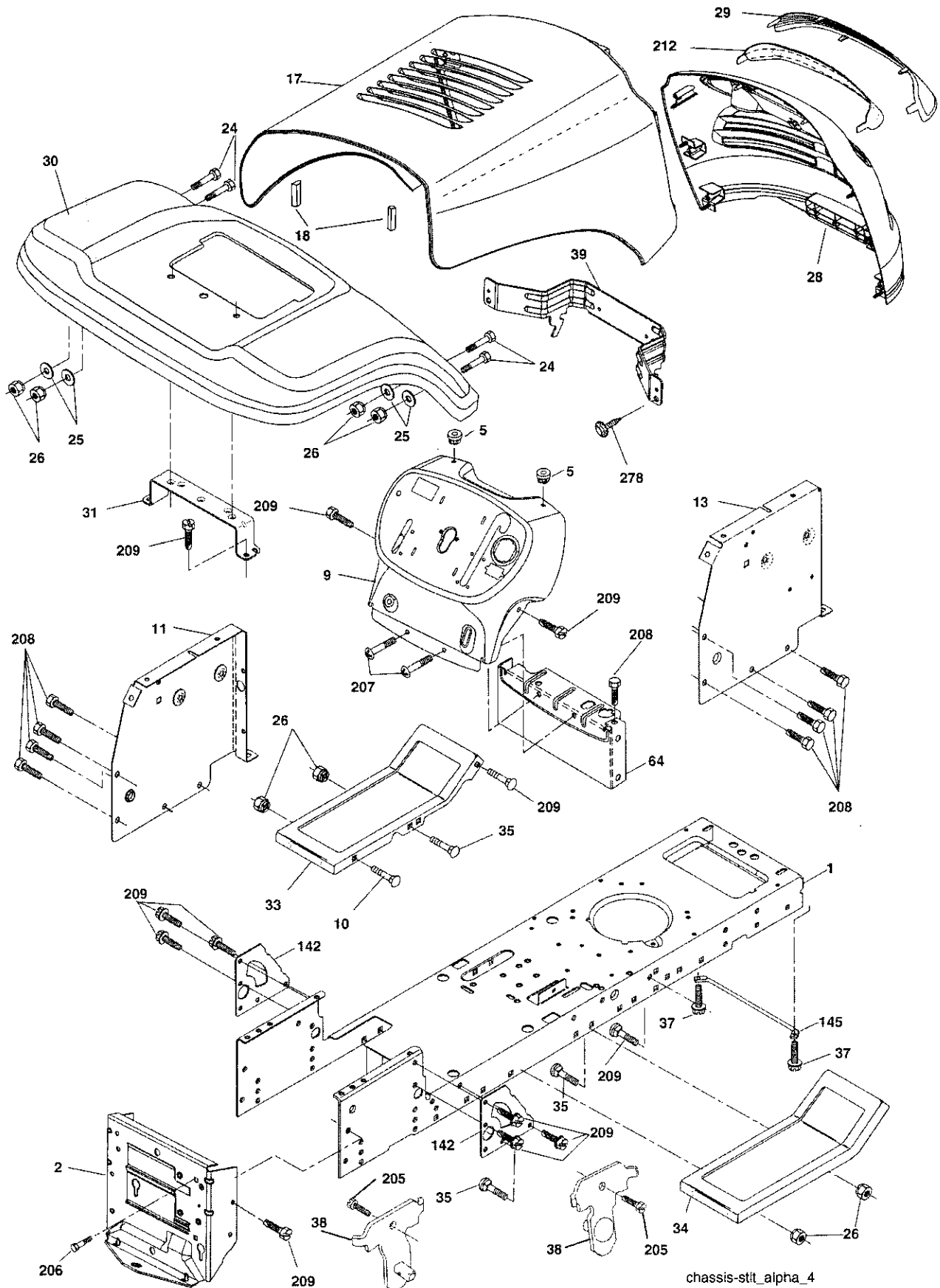
## ELECTRICAL

KEY NO.	PART NO.	DESCRIPTION
1	163465	Battery
2	74760412	Bolt Hex Hd 1/4-20 unc x 3/4
8	176689	Box Battery Fender
16	176138	Switch, Interlock
21	175688	Harness Asm Light W/4152j
22	4152J	Bulb Light #1156
24	4799J	Cable Battery 6 Ga. 11" Red
25	146147	Cable Battery 6 Ga. w/16 Wire Red
26	175158	Fuse 20 AMP
27	73510400	Nut, Keps Hex 1/4-20 unc
28	4207J	Cable Ground 6 Ga. 12" Black
29	192749	Switch Seat
30	193350	Switch Ign
33	411934	Key/Chain
34	110712X	Switch Light
40	197428	Harness Ign
41	71110408	Bolt Blk. Fin Hex 1/4-20 unc x 1/2
42	131563	Cover Terminal Red
43	192507	Solenoid
48	140844	Adapter Ammeter
52	141940	Protection Wire Loop
79	175242	Socket Asm Bulb Twistlock
90	180449	Cover Battery Terminal
92	196615	Harness Pigtail
93	192540	Screw Plastic 10-14 x 2.0
94	191834	Module Reverse ROS

**NOTE:** All component dimensions give in U.S. inches  
1 inch = 25.4 mm

# TRACTOR- -MODEL NO. 917. 253201

## CHASSIS AND ENCLOSURES



chassis-st1t\_alpha\_4

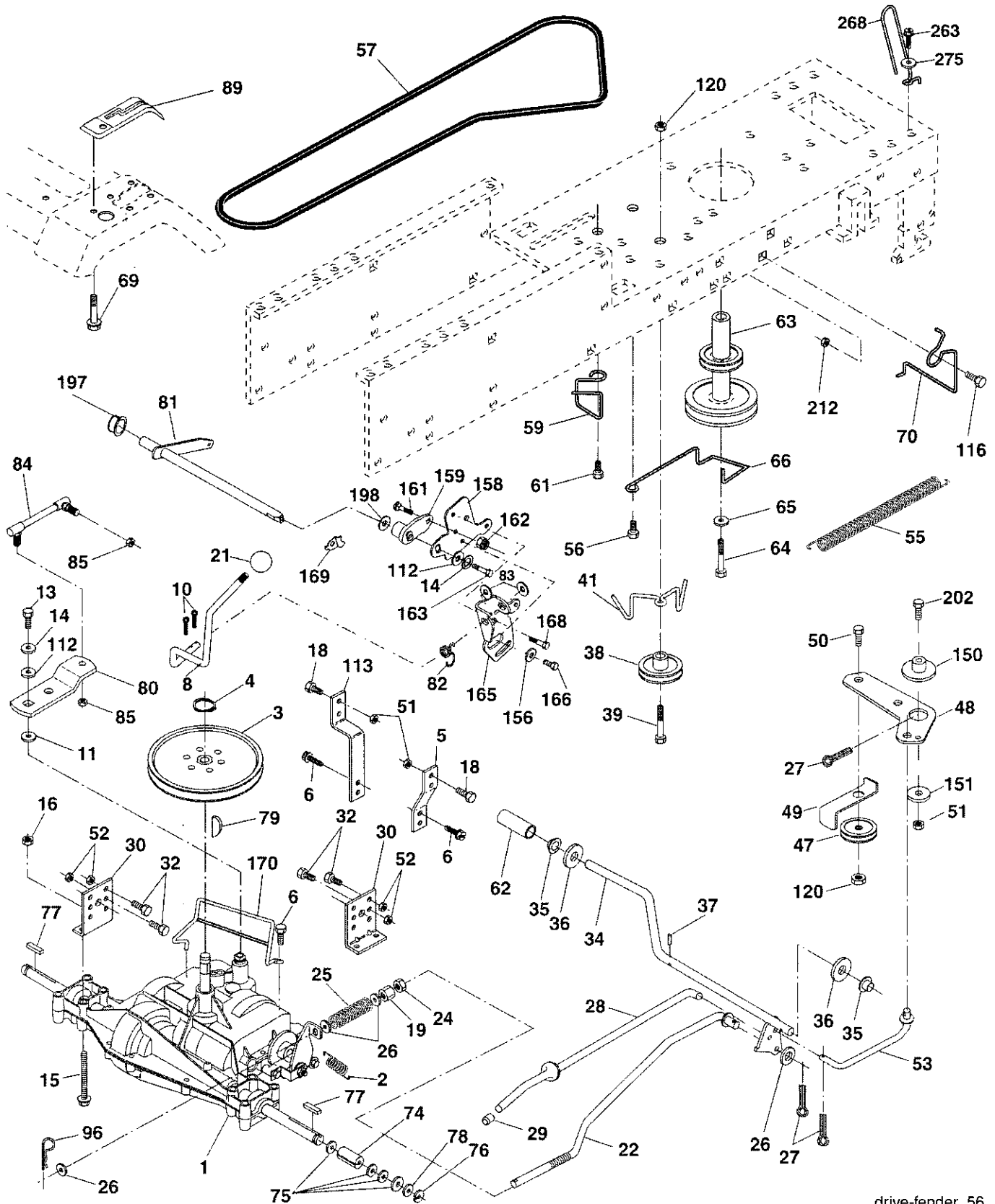
**TRACTOR- -MODEL NO. 917. 253201**  
**CHASSIS AND ENCLOSURES**

<b>KEY NO.</b>	<b>PART NO.</b>	<b>DESCRIPTION</b>
1	174619	Chassis Stamping
2	176554	Drawbar
5	155272	Bumper Hood/Dash
9	193510X013	Dash
10	STD533710	Bolt, Carriage 3/8-16 x 1
11	174996	Panel, Dash, L.H.
13	172105X010	Panel, Dash, R.H.
17	187559X613	Hood Assembly Alpha
18	184921	Bumper Hood Large 1.75
24	STD523710	Bolt Fin Hex 3/8-16 unc x 1 Gr. 5
25	19131312	Washer 13/32 x 13/16 x 12 Ga.
26	STD541437	Nut
28	187598	Grille Asm Alpha (Includes Key Nos. 29 and 212)
29	187567X599	Lens, Alpha
30	192526X613	Fender
31	136619	Bracket, Fender Support
33	179716X613	Footrest LH
34	179717X613	Footrest RH
35	STD533707	Bolt Rdhd Sht Sqnk 3/8-16 x 3/4
37	17490508	Screw Thdrol 5/16-18 x 1/2 Tyt
38	175710	Bracket Asm. Pivot Mower Rear
39	187658	Bracket Pivot Alpha
64	154798	Dash Lower
142	175702	Plate Reinforcement
145	409167	Rod Pivot Chassis/Hood
205	17490608	Screw Thdrol 3/8-16 x 1/2
206	170165	Bolt Shoulder 5/16 -18 TT
207	17670508	Screw 5/16-18 x 1/2
208	17670608	Screw Thdrol 3/8-16 x 1/2
209	17000612	Screw Hex Wsh Thdr 3/8-16 x 3/4
212	187569	Insert Lens Reflective
278	416358	Screw #10 x 0.750 BOS THREAD
--	5479J	Plug, Button

**NOTE:** All component dimensions given in U.S. inches  
1 inch = 25.4 mm

# TRACTOR- -MODEL NO. 917. 253201

## DRIVE



drive-fender\_56



# TRACTOR- -MODEL NO. 917. 253201

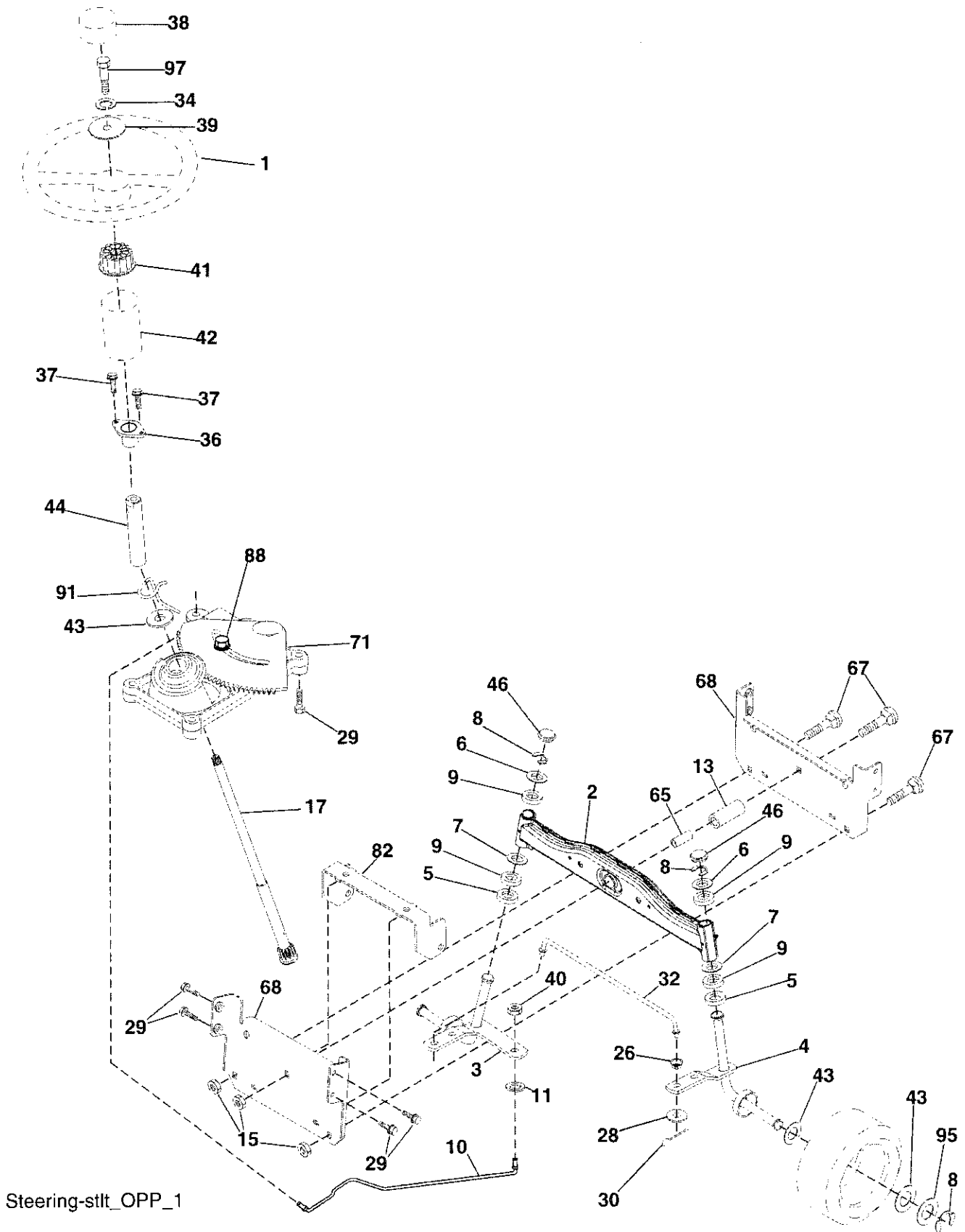
## DRIVE

KEY NO.	PART NO.	DESCRIPTION	KEY NO.	PART NO.	DESCRIPTION
1	-----	Transaxle Peerless 206-545C (See Breakdown)	64	173937	Bolt Hex 7/16-20 x 4 Gr. 5-1.5
2	146682	Spring Brake Return	65	STD551143	Washer
3	123666X	Pulley Transaxle	66	154778	Keeper Belt Engine Hydro
4	12000028	Ring Retainer	69	142432	Screw Hex Wsh Hi-Lo 1/4 x 1/2 unc
5	121520X	Strap Torque 30 Degrees	70	134683	Keeper Belt Engine
6	17000512	Screw 5/16-18 x 3/4	74	137057	Spacer Axle
8	192706	Rod Shift Fender Adjust	75	121749X	Washer 25/32 x 1-1/4 x 16 Ga.
10	STD561210	Pin Cotter 1/8 x 1 CAD	76	STD581075	E-Ring
11	105701X	Washer Plate Shift	77	123583X	Key, Square
13	74550412	Bolt 1/4-28 unF Gr. 8 W/Patch	78	121748X	Washer 25/32 x 1-5/8 x 16 Ga.
14	10040400	Washer Lock Hvy Helical	79	2228M	Key Woodruff
15	74490544	Bolt Hex FLGHD 5/16-18 x Gr. 5	80	131486	Arm Shift
16	STD541431	Nut Lock Hex W/Ins. 5/16-18 unc	81	165594	Shaft Asm Cross Tapered
18	74780616	Bolt Fin Hex 3/8-16 x 1 Gr. 5	82	165711	Spring Torsion
19	STD541437	Nut Lock Hex W/Wsh 3/8-16 unc	83	19171216	Washer 17/32 x 3/4 x 16 Ga.
21	106933X	Knob	84	166228	Link Transaxle
22	130804	Rod, Brake	85	150360	Nut Lock Center 1/4-20
24	73350600	Nut, Hex Jam 3/8-16 unc	89	192053X428	Console, Shift
25	106888X	Spring, Brake Rod	96	4497H	Retainer Spring 1" Zinc/Cad
26	STD551037	Washer 13/32 x 13/16 Ga.	112	19091210	Washer 9/32 x 3/4 x 10 Ga.
27	STD561210	Pin Cotter 1/8 x 3/4 CAD.	113	127285X	Strap Torque 90 Degrees
28	175765	Rod, Parking Brake	116	72140608	Bolt Rdhd Sqneck 3/8-16 x 1.25
29	71673	Cap, Parking Brake	120	73900600	Nut Lock Fig 3/8-16
30	174973	Bracket, Transaxle	150	175456	Spacer Retainer
32	74760512	Bolt Hex Hd 5/16-18 unc x 3/4	151	19133210	Washer 13/32 x 2 x 10 Ga.
34	175578	Shaft, Foot Pedal	156	166002	Washer Srrted 5/16 ID x 1.125
35	120183X	Bearing, Nylon	158	165589	Bracket Shift Mount
36	19211616	Washer	159	183900	Hub Shift
37	1572H	Pin, Roll	161	72140406	Bolt Rdhd Sqnk 1/4-20 x 3/4 Gr. 5
38	179114	Pulley, Composite, Flat	162	73680400	Nut Crownlock 1/4-20 unc
39	72110622	Bolt Fin Hex 3/8-16 x 2-3/4	163	74780416	Bolt Hex Fin 1/4-20 unc x 1 Gr. 5
41	175556	Keeper, Belt Idler	165	165623	Bracket Pivot Lever
47	127783	Pulley, Idler, V-Groove	166	17490510	Screw 5/16-18 x 5/8
48	154407	Bellcrank, Clutch	168	165492	Bolt Shoulder 5/16-18 x .561
49	123205X	Retainer, Belt	169	165580	Plate Fastening
50	72110612	Bolt Carr 3/8-16 x 1-1/2	170	187414	Keeper Belt T/A
51	STD541437	Nut Crownlock 3/8-16 unc	197	169613	Nyliner Snap-In 5/8"ID
52	STD541431	Nut, Crownlock 5/16-18 unc	198	169593	Washer Nyl
53	199652	Link, Clutch	202	72110614	Bolt Carr Sh 3/8-16 x 1-3/4 Gr. 5
55	105709X	Spring, Return, Clutch	212	145212	Nut Hex Fig. Lock
56	17060620	Screw 3/8-16 x 1-1/4	263	17000612	Screw 3/8-16 x 3/4
57	138255	V-Belt	268	182402	Guard Muffler
59	169691	Keeper, Center Span	275	19131614	Washer 13/32 x 1 x 14 Ga.
61	17120614	Screw, 3/8-16 x .875			
62	8883R	Cover, Pedal			
63	175410	Pulley, Engine			

**NOTE:** All component dimensions give in U.S. inches  
1 inch = 25.4 mm

# TRACTOR- -MODEL NO. 917. 253201

## STEERING ASSEMBLY



Steering-stlt OPP\_1

# TRACTOR- -MODEL NO. 917. 253201

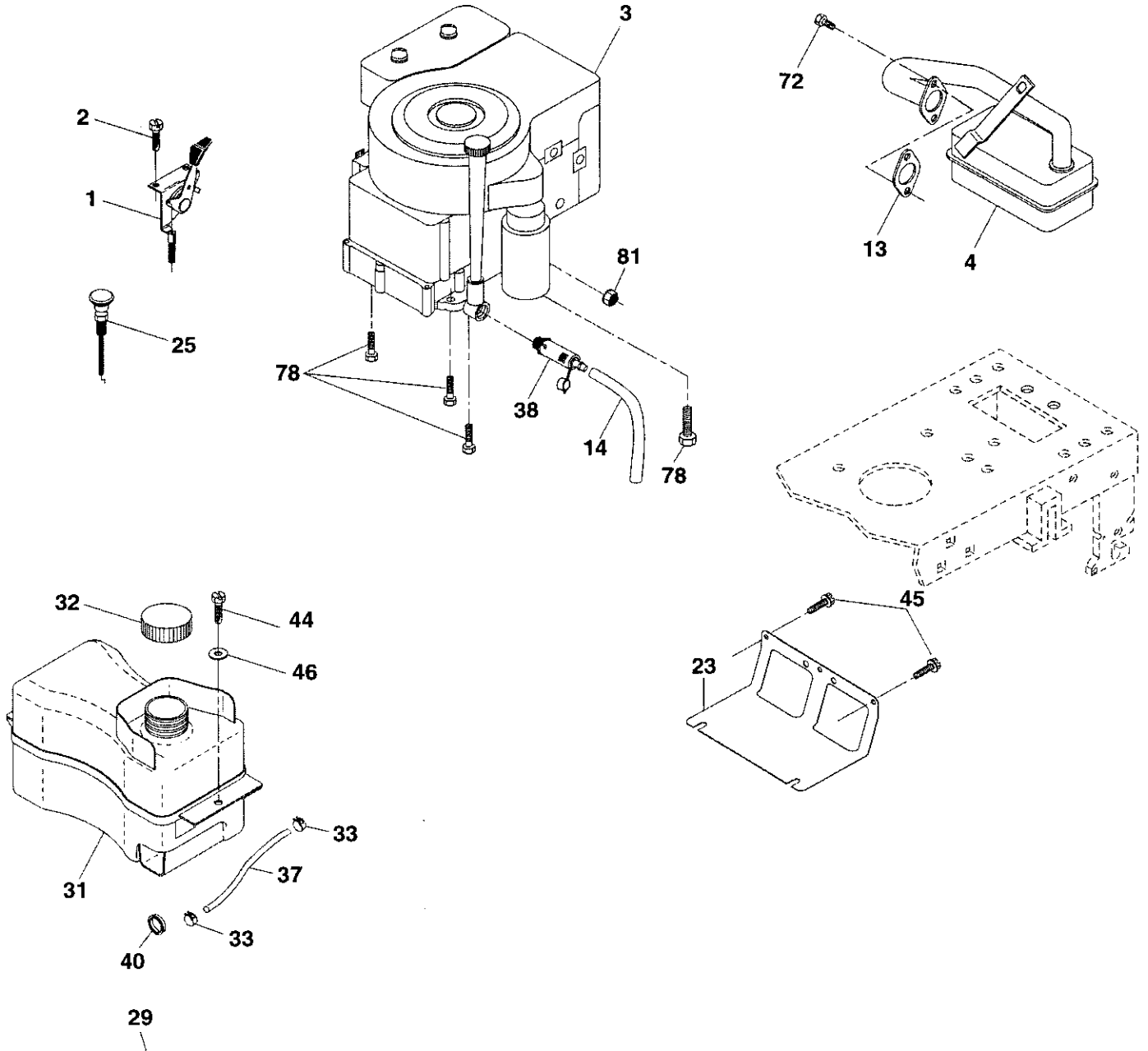
## STEERING ASSEMBLY

KEY NO.	PART NO.	DESCRIPTION
1	186780	Steering Wheel
2	418168	Axle Assembly
3	169840	Spindle Assembly, L.H.
4	169839	Spindle Assembly, R.H.
5	6266H	Bearing, Race, Thrust, Hardened
6	121748X	Washer 27/32 x 1-1-1/4 x 16 Ga.
7	19272016	Washer 25/32 x 1-1/2 x 14 Ga.
8	12000029	Ring, Klip
9	3366R	Bearing Col. Strg.
10	175121	Draglink
11	STD551137	Washer, Lock
13	136518	Spacer Brg Axle Front
15	145212	Nut, Hexflange Lock
17	190753	Shaft, Steering
26	126847X	Bushing, Link, Drag
28	19131416	Washer 13/32 x 7/8 x 16 Ga.
29	17000612	Screw 3/8-16 x 3/4
30	STD561210	Pin
32	192757	Rod, Tie
34	10040500	Washer Lock Hvy Hlcl Spr. 5/16
36	155099	Bushing, Steering
37	152927	Screw
38	192916	Insert, Steering Wheel
39	19113812	Washer 11/32 x 2-3/8 x 12 Ga.
40	73540600	Nut Crownlock 3/8-24
41	186737	Adaptor, Steering Wheel
42	145054x428	Boot, Steering Shaft
43	121749X	Washer 25/32 x 1-1/4 x 16 Ga.
44	190752	Extension Shaft Steering
46	121232X	Cap, Spindle
65	414736	Spacer Brace Axle
67	72110618	Bolt Rdhd Sqnk 3/8-16 x 2-1/4
68	169827	Axle, Brace
71	175146	Steering Asm
82	199978	Bracket Susp Chassis Front
88	175118	Bolt Shoulder 7/16-20
91	175553	Clip Steering
95	188967	Washer Hardened .793 x 1.637 x .060
97	74780564	Bolt 5/16-18 unc x 4 Gr. 5

**NOTE:** All component dimensions given in U.S. inches  
1 inch = 25.4 mm

# TRACTOR- -MODEL NO. 917. 253201

## ENGINE



**OPTIONAL EQUIPMENT**  
**Spark Arrester**

engine-stlt\_bs\_2

# TRACTOR- -MODEL NO. 917. 253201

## ENGINE

KEY NO.	PART NO.	DESCRIPTION
1	170545	Control, Throttle/Choke
2	17720408	Screw, Hex Head, Thread Cutting 1/4-20 x 1/2
3	-----	Engine, Briggs Model No. 31A607-0740-B1
4	137352	Muffler
13	165291	Gasket
14	148456	Tube Drain Oil Easy
23	169837	Shield Brn/Dbr Guard
25	187770X428	Control Choke
29	137180	Arrestor, Spark
31	407516	Tank, Fuel
32	197725	Cap Assembly, Fuel
33	123487X	Clamp, Hose
37	137040	Line, Fuel
38	181654	Plug, Drain Oil Easy
40	124028X	Bushing Snap
44	17670412	Screw, Hex Washer Head, Thd., Roll. 1/4-20 x 3/4
45	17000612	Screw Hex Wsh Thdr 3/8-16 x 3/4
46	19091416	Washer 9/32 x 7/8 x 16 Ga.
72	192334	Screw Socket 5/16-18 x.75
78	17060620	Screw 3/8-16 x 1-1/4
81	73510400	Nut Keps Hex 1/4-20 unc

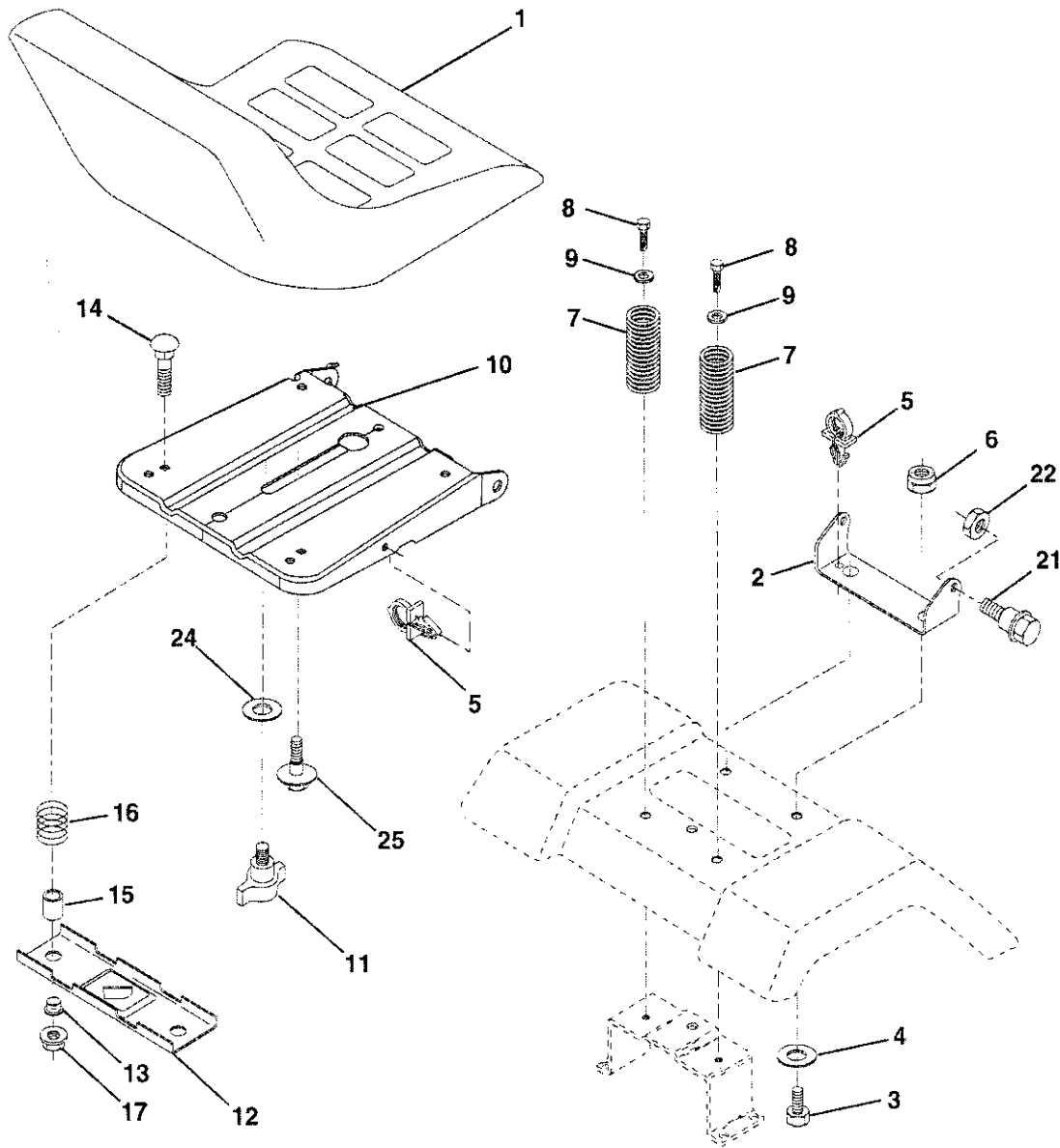
**NOTE:** All component dimensions given in U.S. inches  
1 inch = 25.4 mm

### Engine Power Rating Information

The gross power rating for individual gas engine models is labeled in accordance with SAE (Society of Automotive Engineers) code J11940 (Small Engine Power & Torque Rating Procedure), and rating performance has been obtained and corrected in accordance with SAE J1995 (Revision 2002-5). Actual gross engine power will be lower and is affected by, among other things, ambient operating conditions and engine-to-engine variability. Given both the wide array of products on which engines are placed and the variety of environmental issues applicable to operating the equipment, the gas engine will not develop the rated gross power when used in a given piece of power equipment (actual "on-site" or net horsepower). This difference is due to a variety of factors including, but not limited to, accessories (air cleaner, exhaust, charging, cooling, carburetor, fuel pump, etc.), application limitations, ambient operating conditions (temperature, humidity, altitude), and engine-to-engine variability. Due to manufacturing and capacity limitations, Briggs & Stratton may substitute an engine of higher rated power for this Series engine.

# TRACTOR- -MODEL NO. 917. 253201

## SEAT ASSEMBLY



seat-stit\_knob\_1

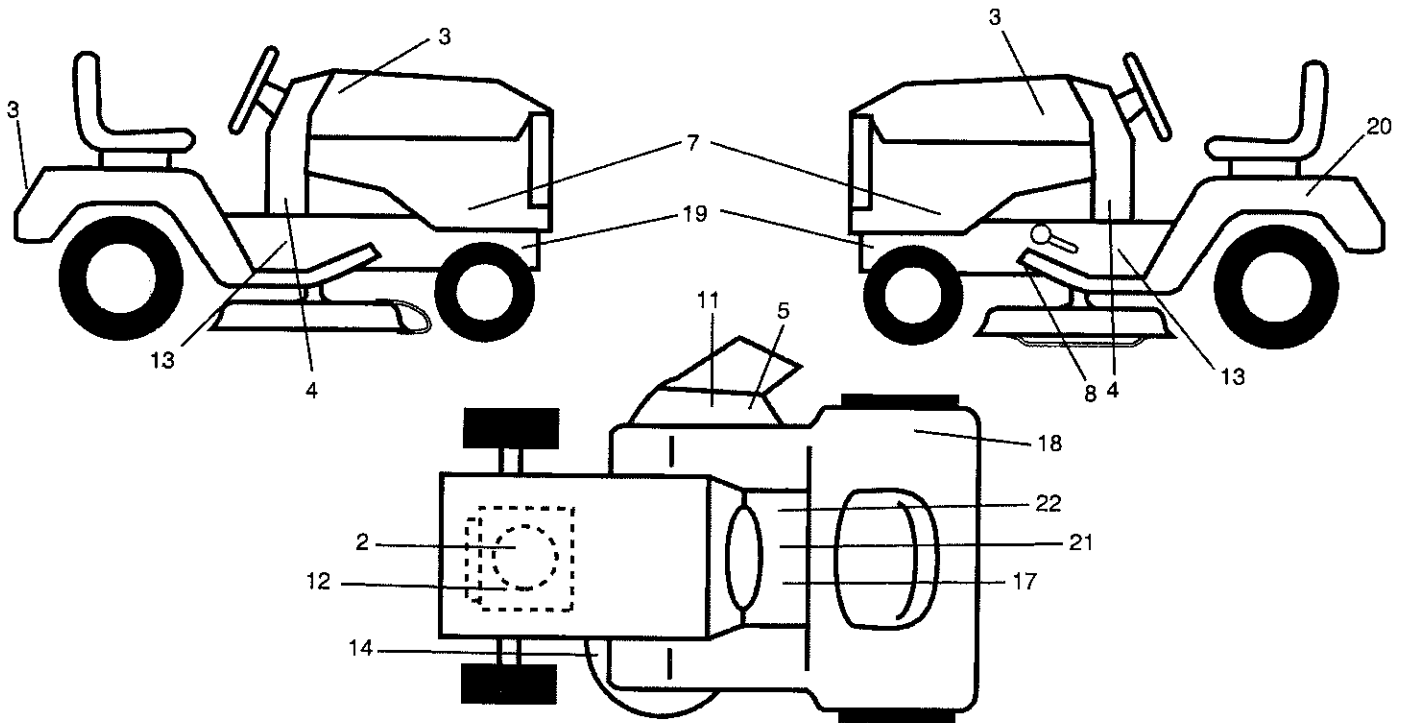
KEY NO.	PART NO.	DESCRIPTION
1	401042	Seat
2	140551	Bracket, Pivot, Seat
3	71110616	Bolt
4	19131610	Washer 13/32 x 1 x 10 Ga.
5	145006	Clip, Push-In Hinged
6	STD541437	Nut
7	124181X	Spring, Seat
8	17000616	Screw 3/8-16 x 1-1/2
9	19131614	Washer 13/32 x 1 x 14 Ga.
10	195530	Pan, Seat
11	166369	Knob Seat
12	174648	Bracket, Switch Mounting

KEY NO.	PART NO.	DESCRIPTION
13	121248X	Bushing, Snap
14	72050412	Bolt, Carriage 1/4-20 x 1-1/2
15	134300	Spacer, Split .28 x .88
16	121250X	Spring
17	123976X	Locknut, Flange 1/4 Gr. 5
21	171852	Bolt, Shoulder 5/16-18 unc
22	STD541431	Nut
24	19171912	Washer 17/32 x 1-3/16 x 12 Ga.
25	127018X	Washer 17/32 x 1-3/16 x 12 Ga.

**NOTE:** All component dimensions given in U.S. inches  
1 inch = 25.4 mm

# TRACTOR- -MODEL NO. 917. 253201

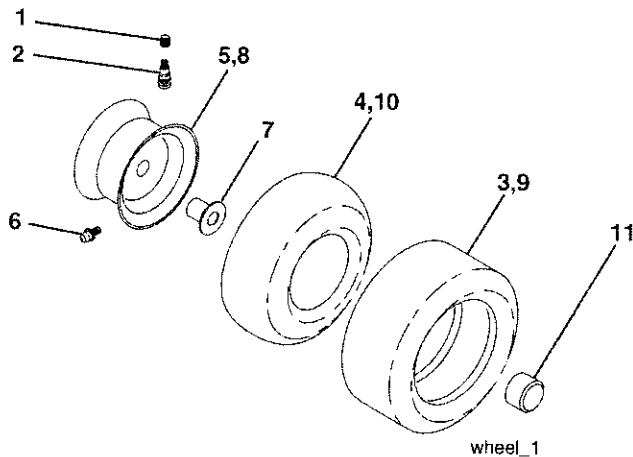
## DECALS



KEY NO.	PART NO.	DESCRIPTION
2	416729	Decal, HP Engine
3	411697	Decal, Hood
4	181685	Decal, Lower Dash
5	196357	Decal, Warning
7	411698	Decal, Hood Side
8	197490	Decal, V-Belt Schematic
11	182166	Decal, Cutfinger CE
12	196841	Decal, Warning, Sym.
14	194302	Decal, V-Belt Schematic
17	400389	Decal, Warning Sym. CE
18	180432	Decal, Fender DB/CE

KEY NO.	PART NO.	DESCRIPTION
19	159736	Decal, Hot Muffler
20	145005	Decal, Battery Dngr/Psn Eng
21	159737	Decal, Brake/Clutch Sym
22	140837	Decal, Saddle Brake/Parking
--	138311	Decal, Lift Handle
--	162598	Decal, Load Limit
--	419992	Manual, Operator's (Euro)
--	419993	Manual, Operator's (Scan)
--	419994	Manual, Operator's (E-Bloc)
--	419995	Manual, Operator's (Baltic)
--	419996	Manual, Parts

## WHEELS & TIRES

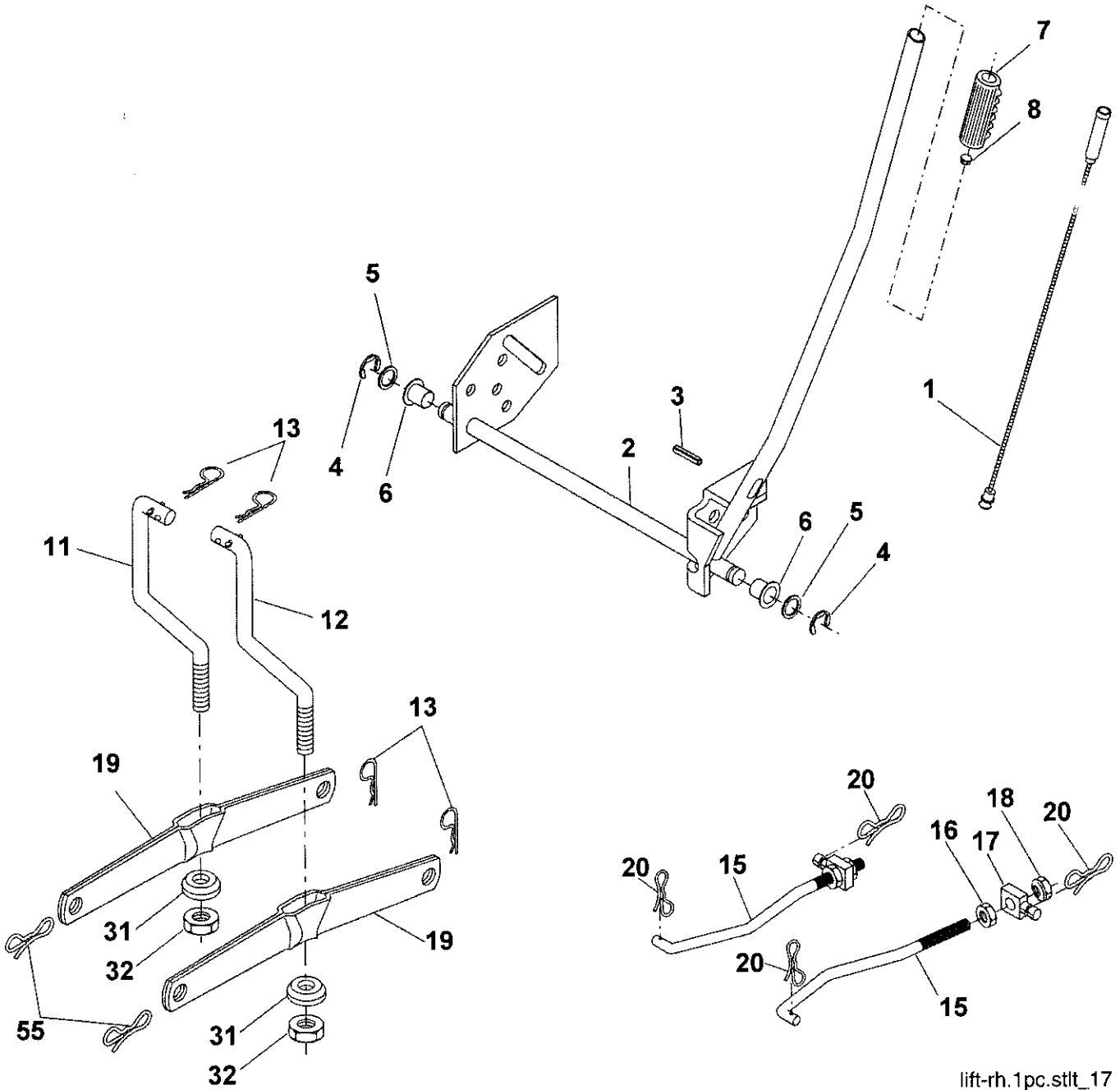


KEY NO.	PART NO.	DESCRIPTION
1	59192	Valve Cap, Tire
2	65139	Stem, Valve
3	124157X	Tire, Front
4	59904	Tube, Front Tire (Not Provided, Service Item Only)
5	106732X624	Rim, Front
6	278H	Fitting, Grease (Front Wheel Only)
7	9040H	Bearing, Flange (Front Wheel Only)
8	106108X624	Rim, Rear
9	123969X	Tire, Rear
10	7152J	Tube, Rear Tire (Not Provided, Service Item Only)
11	104757X428	Cap, Axle
--	144334	Sealant, Tire 10 oz.

**NOTE:** All component dimensions given in U.S. inches  
1 inch = 25.4 mm

# TRACTOR- -MODEL NO. 917. 253201

## MOWER LIFT



lift-rh.1pc.stlt\_17



# TRACTOR- -MODEL NO. 917. 253201

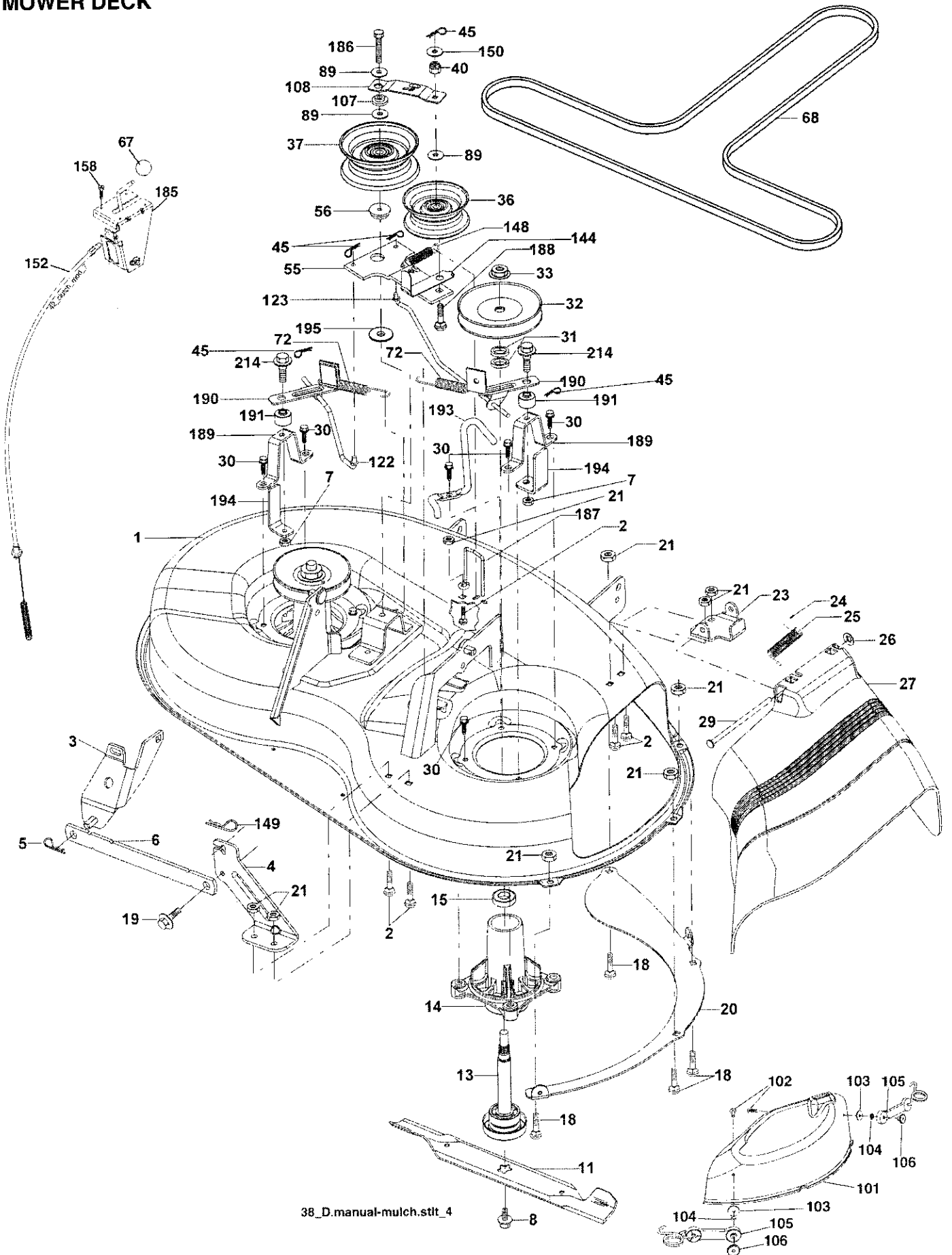
## MOWER LIFT

KEY NO.	PART NO.	DESCRIPTION
1	159460	Lift Lever Inner Wire Assembly
2	159471	Shaft Assembly, Lift
3	105767X	Pin, Groove
4	12000002	E-Ring
5	19211621	Washer 21/32 x 1 x 21 Ga.
6	120183X	Bearing, Nylon
7	125631X	Grip, Handle, Fluted
8	122365X	Button, Plunger, Red
11	139865	Link, Lift, L.H.
12	139866	Link, Lift, R.H.
13	STD624008	Retainer Spring
15	173288	Link, Front
16	73350800	Nut, Hex, Jam 1/2-13 unc
17	175689	Trunnion
18	73800800	Locknut, Hex, with Washer Insert 1/2-13 unc
19	139868	Arm, Suspension, Rear
20	194209	Pin Cotter 7/16 Bow Tie Lock
31	169865	Bearing, Pvt, Lift
32	73540600	Nut, Crownlock 3/8-24
55	194208	Pin Cotter 5/16 Bow Tie Lock

**NOTE:** All component dimensions given in U.S. inches  
1 inch = 25.4 mm

# TRACTOR- -MODEL NO. 917. 253201

## MOWER DECK



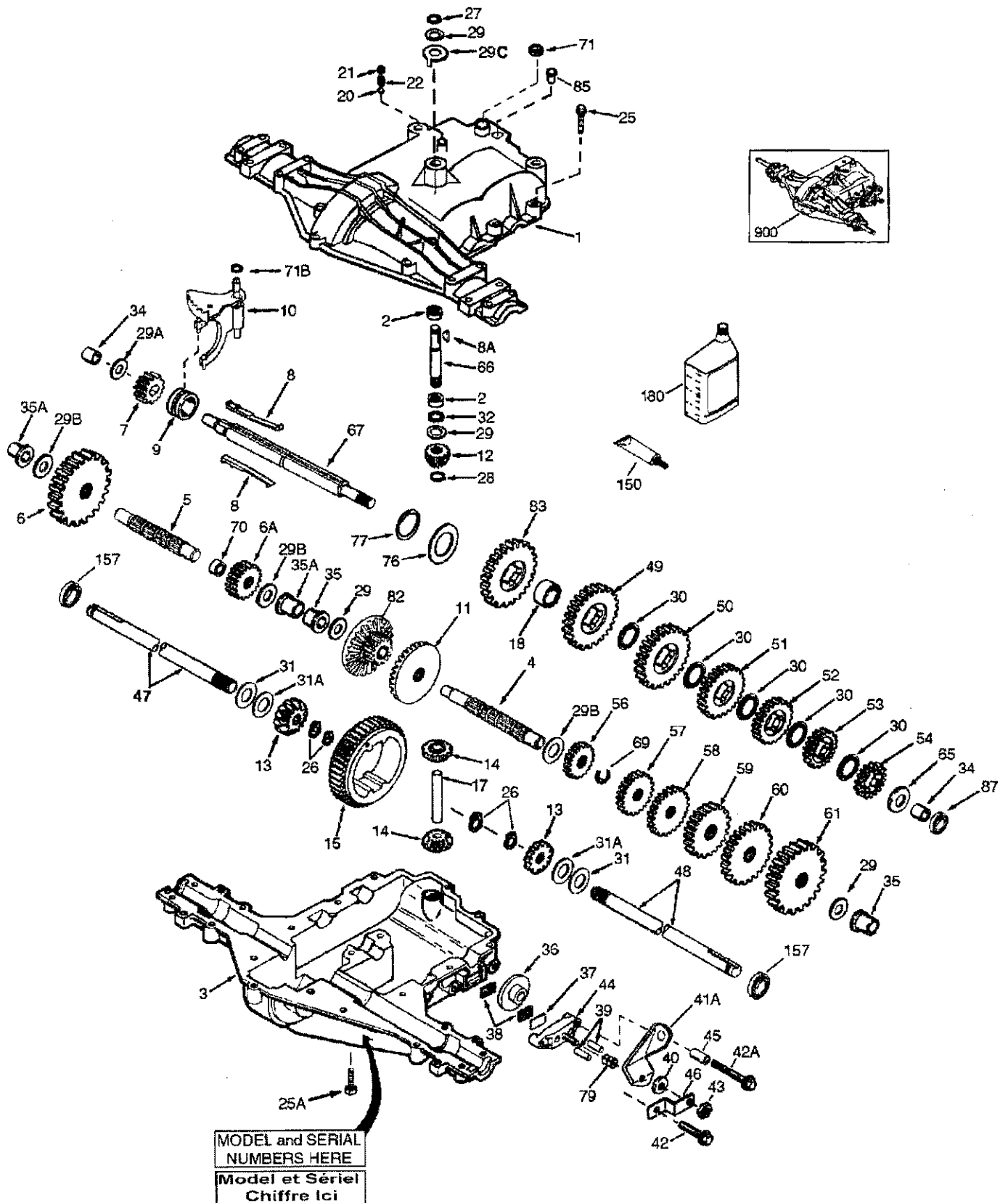
# TRACTOR- -MODEL NO. 917. 253201

## MOWER DECK

KEY NO.	PART NO.	DESCRIPTION	KEY NO.	PART NO.	DESCRIPTION
1	19 2556	Mower Housing Assembly	103	19061216	Washer #10
2	72140506	Bolt Carriage 5/16-18 x 3/4	104	10071000	Washer Lock
3	138017	Bracket Asm Fr. Sway Bar	105	160793	Latch Asm.
4	192568	Bracket Deck Sway Bar 38"/42"	106	2029J	Nut Weld .327/.304 #10-24
5	STD624008	Retainer Spring	107	133502	Spacer Retainer
6	178024	Bar Sway Deck	108	133503	Stiffener, Idler Arm
7	73800500	Nut Lock Hx W/INs. 5/16-18 unc	122	410189	Link, Brake LH
8	193003	Bolt 3/8-24 x 1.25 Gr. 8	123	410190	Link, Brake RH
11	193957	Blade Mower	144	193414	Keeper Belt Idler Tension
13	192872	Shaft Assembly, Mandrel, Vented	148	169022	Spring Return Idler
14	187281	Housing, Mandrel, Vented	149	165898	Retainer Spring Yellow
15	110485X	Bearing, Ball, Mandrel	150	19091210	Washer 9/32 x 3/4 x 10 Ga.
18	72140505	Boit Rdhd Sqnk 5/16-18 x 5/8	152	193235	Clutch Cable 38"/46"
19	132827	Bolt, Shoulder	158	17720408	Screw Hex Thd Cut 1/4-20 x 1/2
20	400095	Baffle Vortex Front	185	188234	Head Asm Cable Clutch
21	73680500	Nut	186	17490644	Screw Hex Wsh Thdrol 3/8-16 x 2-3/4
23	192557	Bracket, Mower Deflector	187	193412	Keeper Belt
24	105304X	Cap, Sleeve	188	165891	Bolt Carriage Idler
25	197026	Spring, Torsion, Deflector	189	192559	Stand, Brake
26	110452X	Nut, Push	190	192560	Arm, Brake
27	192572X428	Shield, Deflector	191	192561	Spacer, Brake
29	131491	Rod, Hinge	193	193413	Keeper Belt RH Mandrel
30	173984	Screw Thdrol.	194	194105	Guard Brake
31	187690	Washer, Spacer	195	19133210	Washer
32	153532	Pulley, Mandrel	214	193782	Bolt/Washer Asm 5/16-18
33	400234	Nut, Toplock	--	192558	Brake Assembly (Includes Stand, Arm and Guard Components)
36	131494	Pulley, Idler, Flat	--	192870	Mandrel Assembly (Includes housing, shaft assembly, and bearing only - pulley/nut/washer and blade bolt/washers not included)
37	193198	Pulley Idler Flat	--	193646	Replacement Mower, Complete
40	73680600	Nut, Crownlock 3/8-16 unc			
45	STD624003	Retainer			
55	133840	Idler Arm Assembly			
56	165723	Spacer, Retainer			
67	149846	Knob			
68	193214	V-Belt			
72	193216	Spring Brake Return			
89	19131311	Washer 13/32 x 13/16 x 11 Ga.			
101	192573	Cover Mulching			
102	71081010	Screw Pan Hd Phillip 10-24 x 5/8			

**NOTE:** All component dimensions given in U.S. inches  
1 inch = 25.4 mm

**TRACTOR- -MODEL NO. 917. 253201**  
**PEERLESS TRANSAXLE - MODEL NUMBER 206-545C**



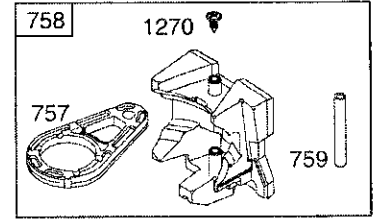
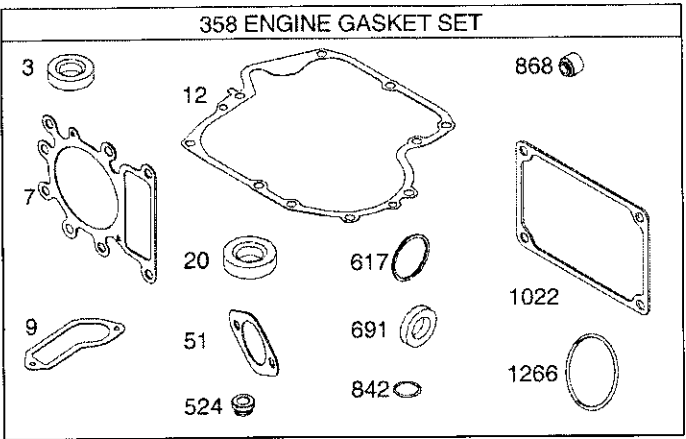
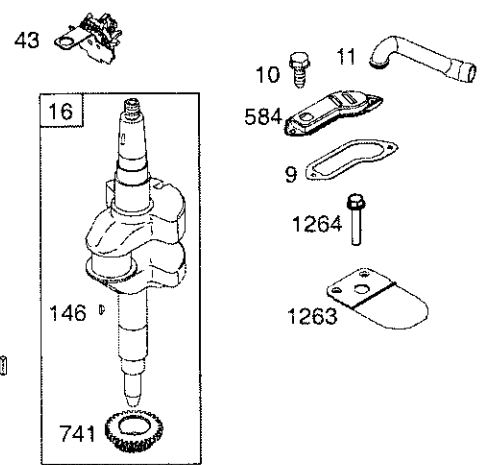
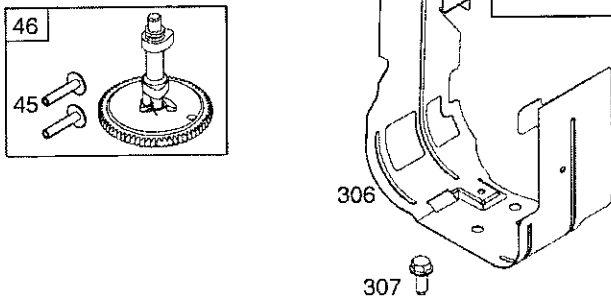
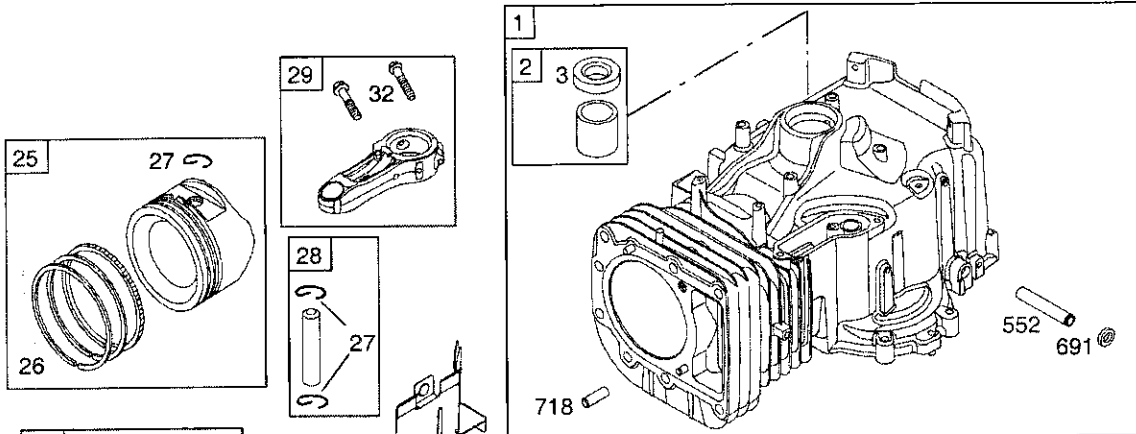
## TRACTOR- -MODEL NO. 917. 253201

### PEERLESS TRANSAXLE - MODEL NUMBER 206-545C

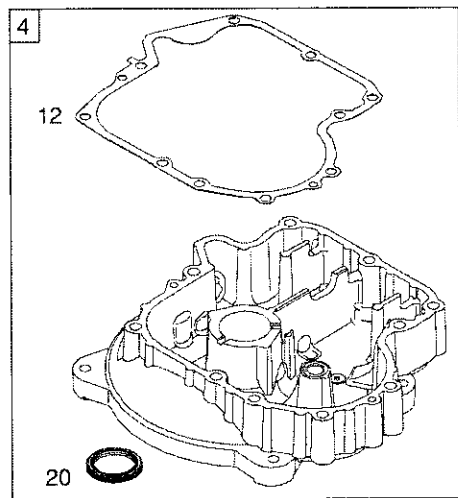
KEY NO.	PART NO.	DESCRIPTION	KEY NO.	PART NO.	DESCRIPTION
1	772147	Transaxle Cover	42A	792085A	Screw 1/4 - 20 x 2 1/4"
2	780086A	Needle Bearing 5/8"	43	792075	Locknut 5 / 16 - 24
3	770128	Transaxle Case	44	790025	Brake Pad Holder
4	776395	Countershaft	45	786066	Spacer .2625 x 1.0
5	776409	Output Shaft	46	786086	Brake Lever Bracket
6	778364	Spur Gear (38 teeth)	47	774690	Axle (11-15 / 16" Long)
6A	778369	Spur Gear (15 teeth)	48	774691	Axle (16 - 1 / 2" long)
7	778330	Spur Gear (11 teeth)	49	778356	Spur Gear (29 teeth)
8	792180	Shift Key	50	778338	Spur Gear (27 teeth)
8A	792047	Woodruff Key #9	51	778354	Spur Gear (23 teeth)
9	784352	Shift Collar	52	778352	Spur Gear (19 teeth)
10	784378	Shift Rod & Fork	53	778350	Spur Gear (16 teeth)
11	778334	Bevel Gear (30 teeth)	54	778346	Spur Gear (15 teeth)
12	778309	Input Bevel Pinion (13 teeth)	56	778355	Spur Gear (11 teeth)
13	778368	Bevel Gear (13 teeth) (Include. 14)	57	778337	Spur Gear (13 teeth)
14	778368	Bevel Pinion (13 teeth) (Include. 13)	58	778353	Spur Gear (17 teeth)
15	778370	Ring Gear (43 teeth)	59	778351	Spur Gear (21 teeth)
17	786188	Drive Pin	60	778349	Spur Gear (24 teeth)
18	786102	Spacer 1.130 X .695	61	778345	Spur Gear (25 teeth)
20	792077A	Ball 5/16" dia	65	780189	Flat Washer .563 ID x .062W
21	792078	Set Screw 3/8 - 16 x 3/8"	66	776422	Input Shaft
22	792079	Spring .310 OD x .625 L	67	776396	Shifter & Brake Shaft
25	792073A	Screw 1/4 - 20 x 1-1/4"	69	792170	Retaining Ring
25A	792177	Screw 1/4-20 x 1-3/8"	70	786187	Spacer .890
26	792125	Retaining Ring (pkg of 2)	71	788069	Square Cut Ring
27	792035	Retaining Ring	71B	788092	"O" Ring
28	788040	Retaining Ring	76	780090	Flat Washer 1.128 ID x .058W
29	780072	Thrust Washer .627 ID x .031W	77	788078A	Inverted Retaining Ring
29A	780160	Thrust Washer .762 ID x .031W	79	792144	Spring .430 OD x .5000 L
29B	780051	Thrust Washer .762 ID x .031W	82	778333	Bevel & Spur Gear (30 & 13 teeth)
29C	780199	Anti-Rotation Washer .632	83	778338	Spur Gear (27 teeth)
30	780108	Cup Washer 1.127 ID x .032W	85	792154	Oil Fill Plug
31	780001	Flat Washer .750 ID x .056W (Use As Needed)	87	788089A	Oil Seal 9 / 16"
31A	780195	Flat Washer .750 ID x .062W	150	788093A	Liquid Gasket RTV Silicone
32	788083	Oil Seal 5/8"	157	788088A	Oil Seal 3 / 4"
34	780194	Bushing .563	180	730229A	Gear Oil 80W90
35	780193	Flanged Bushing 5 / 8" ID	900	794712	Replacement MST - 206-545C
35A	780197	Flanged Bushing .751			Transaxle
36	790075	Brake Disk			
37	790007	Brake Pad Plate			
38	799021	Brake Pad (pkg of 2)			
39	786026	Dowel Pin			
40	792076A	Flat Washer .312 ID x .059W			
41A	790079	Brake Lever			
42	792073A	Screw 1/4 - 20 x 1-1 / 4"			

**NOTE:** All component dimensions given in U.S.inches  
1 inch = 25.4 mm

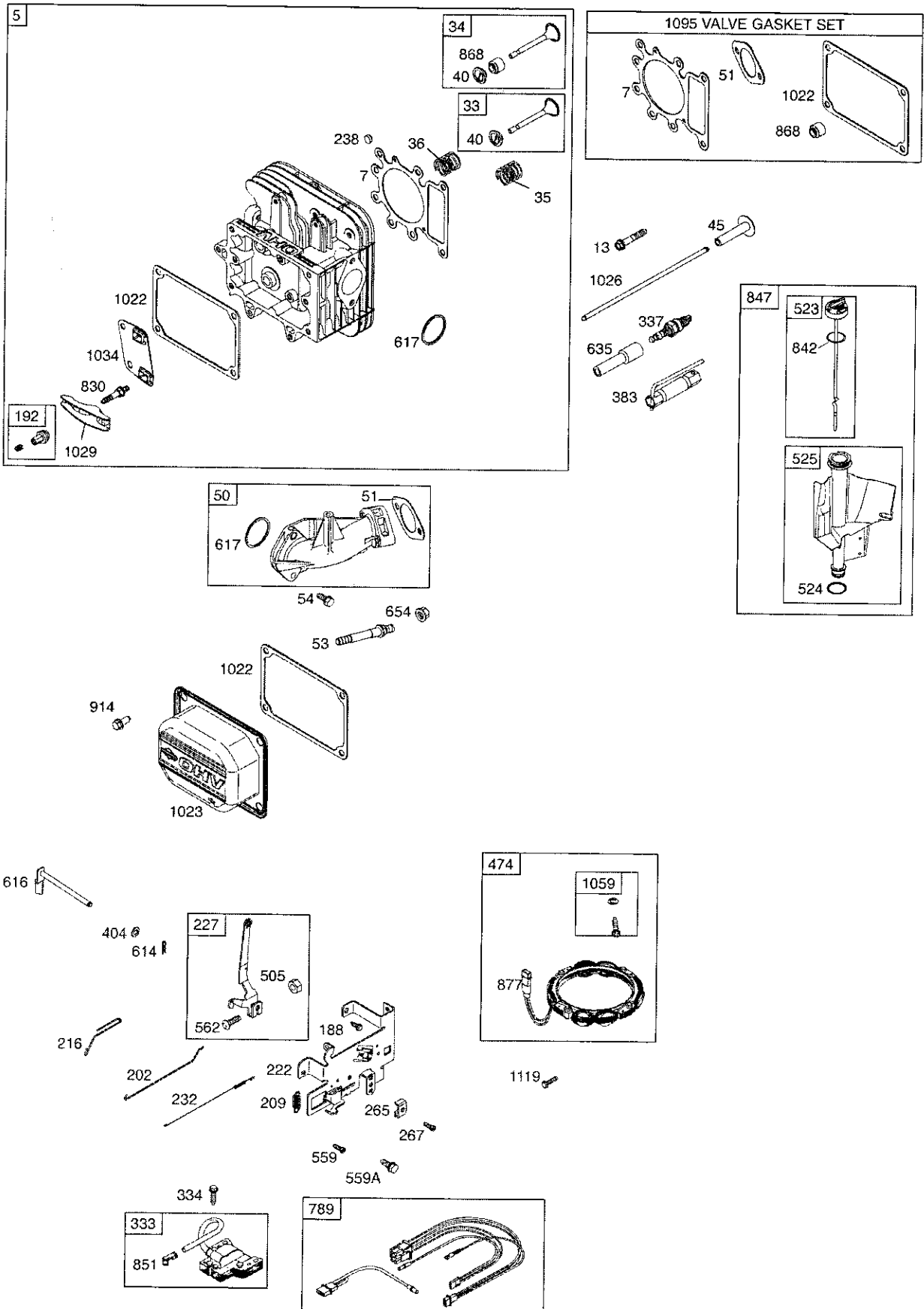
**TRACTOR- -MODEL NO. 917. 253201**  
**BRIGGS AND STRATTON ENGINE - MODEL NO. 31A607-0740-B1**



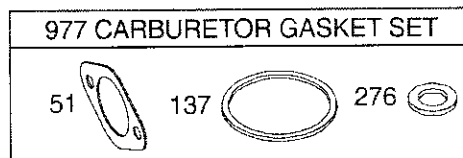
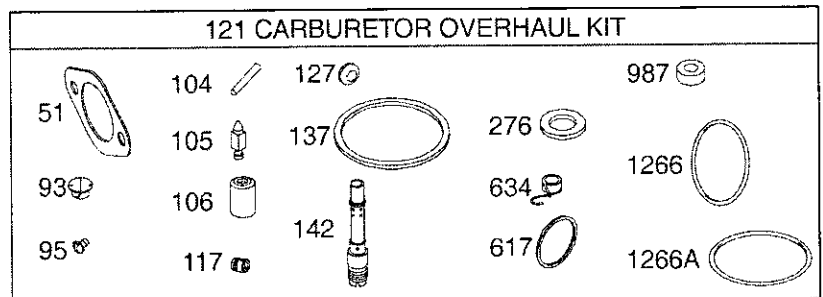
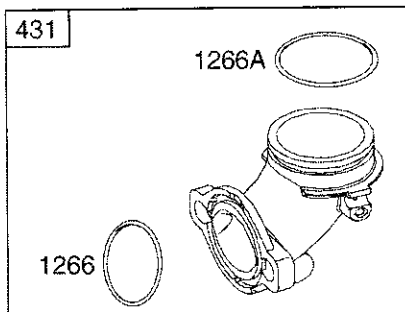
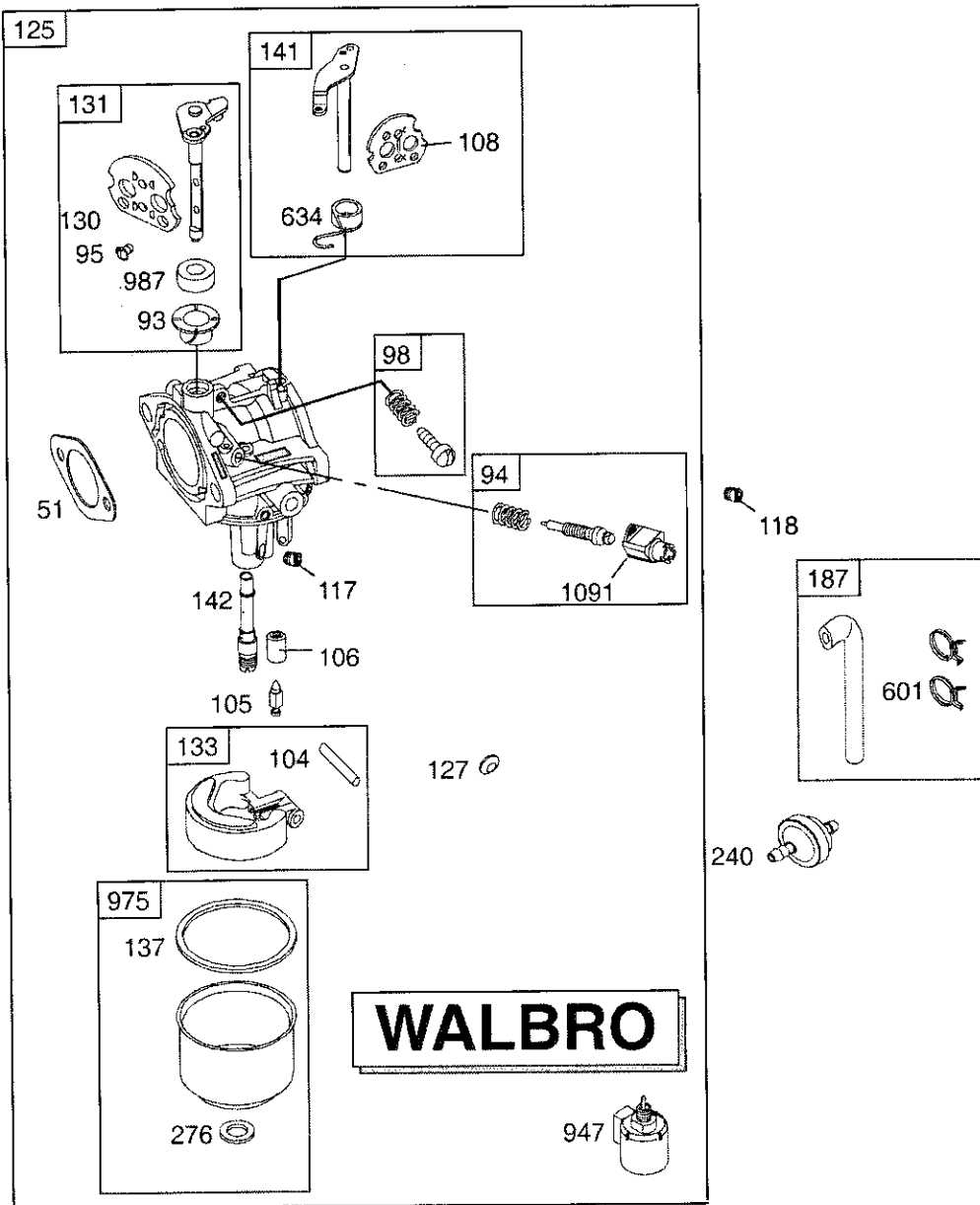
- 48 SHORT BLOCK
- 1058 OPERATOR'S MANUAL
- 1036 EMISSIONS LABEL
- 1329 REPLACEMENT ENGINE
- 1330 REPAIR MANUAL



**TRACTOR- -MODEL NO. 917. 253201**  
**BRIGGS AND STRATTON ENGINE - MODEL NO. 31A607-0740-B1**



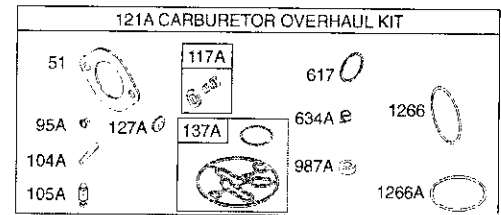
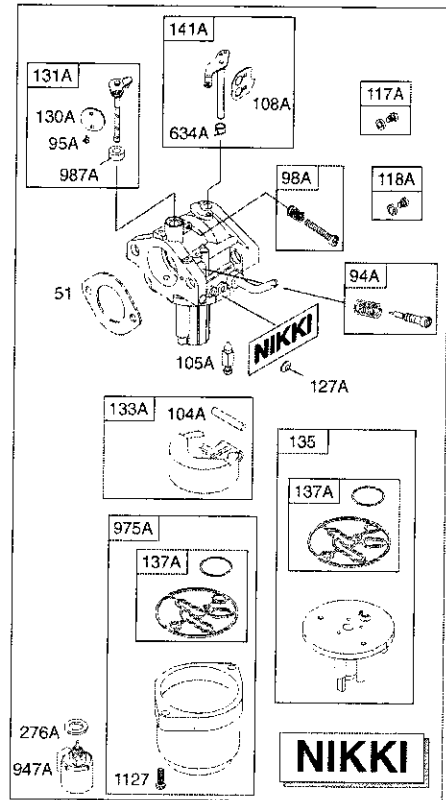
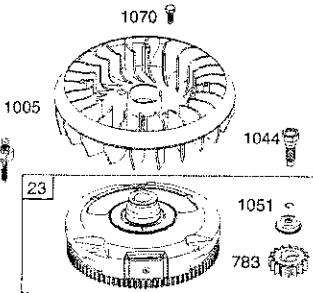
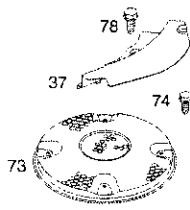
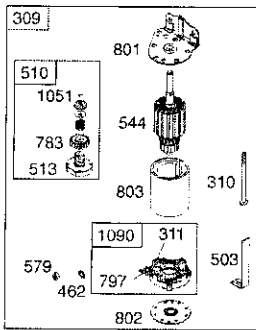
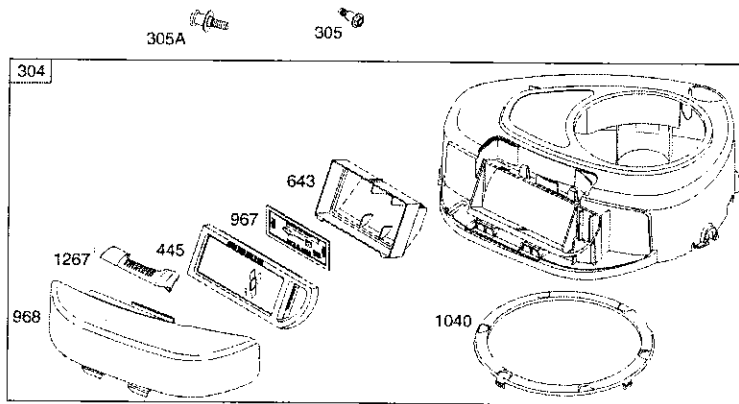
**TRACTOR- -MODEL NO. 917. 253201**  
**BRIGGS AND STRATTON ENGINE - MODEL NO. 31A607-0740-B1**





# TRACTOR- -MODEL NO. 917. 253201

## BRIGGS AND STRATTON ENGINE - MODEL NO. 31A607-0740-B1



# TRACTOR- -MODEL NO. 917. 253201

## BRIGGS AND STRATTON ENGINE - MODEL NO. 31A607-0740-B1

KEY NO.	PART NO.	DESCRIPTION	KEY NO.	PART NO.	DESCRIPTION
1	793987	Cylinder Assembly	118A	699458	Jet-Main (High Altitude) (Nikki)
2	399265	Kit-Bushing/Seal (Magneto Side)	121	697241	Kit-Carburetor Overhaul (Walbro)
3	391086s	• Seal-Oil (Magneto Side)	121A	699521	Kit-Carburetor Overhaul (Nikki)
4	697106	Sump-Engine	125	791888	Carburetor (Walbro)
5	793989	Head-Cylinder	127	695005	Plug-Welch (Walbro)
7	699168	•+ Gasket-Cylinder Head	127A	690727	Ø Plug-Welch (Nikki)
9	697109	• Gasket-Breather	130	691750	Valve-Throttle (Walbro)
10	697157	Screw (Breather Assembly)	130A	699500	Valve-Throttle (Nikki)
11	697113	Tube-Breather	131	494379	Kit-Throttle Shaft (Walbro)
12	697110	• Gasket-Crankcase	131A	699501	Kit-Throttle Shaft (Nikki)
13	793988	Screw (Cylinder Head)	133	494381	Float-Carburetor (Walbro)
15	690946	Plug-Oil Drain	133A	694914	Float-Carburetor (Nikki)
16	697127	Crankshaft	135	698780	Tube-Fuel Transfer (Nikki)
20	791892	• Seal-Oil (PTO Side)	137	281165s	Ø‡ Gasket-Float Bowl (Walbro)
22	692125	Screw (Crankcase Cover/Sump)	137A	698781	Ø Gasket-Float Bowl (Nikki)
23	693557	Flywheel	141	495931	Kit-Choke Shaft (Walbro)
24	222698s	Key-Flywheel	141A	695420	Kit-Choke Shaft (Nikki)
25	792507	Piston Assembly (Standard)	142	697140	Ø Nozzle-Carburetor (Walbro)
	792648	Piston Assembly (.020" Oversize)	146	691639	Key-Timing
26	791936	Ring Set (Standard)	187	791805	Line-Fuel (Molded) (Cut to Required Length)
	791947	Ring Set (.020" Oversize)			Screw (Control Bracket)
27	698469	Lock-Piston Pin	188	691693	Adjuster-Rocker Arm
28	697099	Pin-Piston	192	691986	Link-Mechanical Governor
29	791631	Rod-Connecting (Standard)	202	691841	Spring-Governor
32	791118	Screw (Connecting Rod)	209	692208	Link-Choke
33	791934	Valve-Exhaust	216	691840	Bracket-Control
34	791935	Valve-Intake	222	694042	Lever-Governor Control
35	691279	Spring-Valve (Intake)	227	691374	Spring-Governor
36	691279	Spring-Valve (Exhaust)	232	691842	Cap-Valve
37	697352	Guard-Flywheel	238	691843	Filter-Fuel
42	499586	Keeper-Valve	240	394358s	Clamp-Casing
43	691968	Slinger-Governor/Oil	265	691024	Screw (Casing Clamp)
45	690564	Tappet-Valve	267	792629	Ø‡ Washer-Sealing (Walbro)
46	793583	Camshaft	276	692255	Washer-Sealing (Nikki)
48	697761	Short Block	276A	695410	Housing-Blower
50	690193	Manifold-Intake	304	698402	Screw (Blower Housing)
51	692137	•Ø‡+ Gasket-Intake	305	697102	Screw (Blower Housing)
53	690227	Stud (Carburetor)	305A	793376	Shield-Cylinder
54	691148	Screw (Intake Manifold)	306	697107	Screw (Cylinder Shield)
73	697133	Screen-Rotating	307	691003	Motor-Starter
74	697897	Screw (Rotating Screen)	309	693551	Bolt (Starter Motor)
78	691003	Screw (Flywheel Guard)	310	690323	Brush Set
93	690602	Ø Bushing-Throttle Shaft (Walbro)	311	497608	Armature-Magneto
94	498030	Kit-Idle Mixture (Walbro)	333	492341	Screw (Magneto Armature)
94A	695425	Kit-Idle Mixture (Nikki)	334	691061	Plug-Spark
95	691636	Ø Screw (Throttle Valve) (Walbro)	337	691043	Gasket Set-Engine
95A	690718	Ø Screw (Throttle Valve) (Nikki)	358	697191	Flywheel Puller
98	495800	Kit-Idle Speed (Walbro)	363	19203	Wrench-Spark Plug
98A	695408	Kit-Idle Speed (Nikki)	383	89838s	Washer (Governor Crank)
104	690525	Ø Pin-Float Hinge (Walbro)	404	691691	Elbow-Intake
104A	694918	Ø Pin-Float Hinge (Nikki)	431	697122	Filter-Air Cleaner Cartridge
105	231855s	Ø Valve-Float Needle (Walbro)	445	698083	Washer (Starter Cable)
105A	696136	Ø Valve-Float Needle (Nikki)	462	691261	Alternator
106	690577	Ø Seat-Inlet (Walbro)	474	696459	Strap-Starter
108	692344	Valve-Choke (Walbro)	503	691532	Nut (Governor Control Lever)
108A	695419	Valve-Choke (Nikki)	505	691251	Drive-Starter
117	694352	Ø Jet-Main (Standard) (Walbro)	510	693699	Clutch-Drive
117A	699457	Ø Jet-Main (Standard) (Nikki)	513	692024	Dipstick
118	697228	Jet-Main (High Altitude) (Walbro)	523	699908	

**TRACTOR- -MODEL NO. 917. 253201**  
**BRIGGS AND STRATTON ENGINE - MODEL NO. 31A607-0740-B1**

KEY NO.	PART NO.	DESCRIPTION	KEY NO.	PART NO.	DESCRIPTION
524	691032	• Seal-Dipstick Tube			Service Dealer)
525	697184	Tube-Dipstick	1040	698368	Plate-Trim
544		Starter-Armature (For service see	1044	698139	Screw (Flywheel)
		Starter Motor 693551)	1051	691265	Ring-Retaining
552	697144	Bushing-Governor Crank	1058	MS3787	Operator's Manual
559	697561	Screw (Remote Choke)	1059	698516	Kit-Screw/Washer
559A	693675	Screw (Remote Choke)	1070	690372	Screw (Flywheel Fan)
562	691119	Bolt (Governor Control Lever)	1090	691293	Retainer-Brush
579	691029	Nut (Starter Cable)	1091	691333	Cap-Limiter
584	697112	Cover-Breather Passage	1095	690190	Gasket Set-Valve
601	791850	Clamp-Hose	1119	691183	Screw (Alternator)
614	691620	Pin-Cotter	1127	695407	Screw (Float Bowl) (Nikki)
616	692012	Crank-Governor	1263	697124	Reed-Breather
617	692138	∅ • Seal-O Ring (Intake Manifold)	1264	697104	Screw (Breather Reed)
634	690802	∅ Spring/Seal Assembly (Walbro)	1266	691917	•∅ Seal-O Ring (Intake Elbow)
634A	698779	∅ Spring/Seal Assembly (Nikki)	1266A	697123	∅ Seal-O Ring (Intake Elbow)
635	691909	Boot-Spark Plug	1267	697419	Latch-Blower Housing
643	698401	Retainer-Air Filter	1270	697156	Plug-AVS Counterweight
654	690958	Nut (Carburetor)	1329	31B707-0026	Replacement Engine (If the original engine is equipped with a six pin wiring harness transfer to the replacement engine. Transfer Muffler and/or Spark Arrester Assembly from the original engine if suitable for additional service or add new parts as required. Remove 691840 add 790544. Transfer the speed limiter control assembly to the replacement engine. Transfer governor spring to the replacement engine.)
691	692407	• Seal-Governor Shaft			Repair Manual
697	690372	Screw (Drive Cap)			
718	690959	Pin-Locating			
729	691224	Clip-Wire			
741	697128	Gear-Timing			
757	693242	Link-Counterweight			
758	697134	Counterweight			
759	697392	Pin-Counterweight			
783	693713	Gear-Pinion			
789	698329	Harness-Wiring			
797	693167	Nut (Brush Retainer)			
801	691283	Cap-Drive			
802	691286	Cap-End	1330	272147	
803		Housing-Starter (For service see Starter Motor 693551)			
830	691095	Stud (Rocker Arm)			
842	691031	• Seal-O Ring (Dipstick Tube)	•		Included in Engine Gasket Set, Key. No. 358
847	790442	Dipstick/Tube Assembly	∅		Included in Carburetor Overhaul Kit, Key. No. 121 Or 121A
851	692424	Terminal-Spark Plug	‡		Included in Carburetor Gasket Set, Key. No. 977
868	690968	•+ Seal-Valve	+		Included in Valve Gasket Set, Key. No. 1095
877	393456	Wire-Connector/Alternator			
914	691108	Screw (Rocker Cover)			
947	694393	Solenoid-Fuel (Walbro)			
947A	699915	Solenoid-Fuel (Nikki)			
967	697015	Filter-Pre Cleaner			
968	698403	Cover-Air Cleaner			
975	495933	Bowl-Float (Walbro)			
975A	699502	Bowl-Float (Nikki)			
977	690192	Gasket Set-Carburetor			
987	691326	∅ Seal-Throttle Shaft (Walbro)			
987A	698777	∅ Seal-Throttle Shaft (Nikki)			
1005	699043	Fan-Flywheel			
1022	272475s	•+ Gasket-Rocker Cover			
1023	791079	Cover-Rocker Arm			
1026	692003	Rod-Push (Intake)			
	692011	Rod-Push (Exhaust)			
1029	691751	Arm-Rocker			
1034	690822	Guide-Push Rod			
1036		Label-Emissions (Available from a Briggs & Stratton authorized			

NOTE: All component dimensions given in U.S. inches  
1 inch = 25.4 mm

### **LIMITED WARRANTY ON CRAFTSMAN RIDING EQUIPMENT**

For two (2) years from the date of purchase, if this Craftsman Riding Equipment is maintained, lubricated and tuned up according to the instructions in the owner's manual, Sears will repair or replace free of charge any parts that are found to be defective in material or workmanship according to the guidelines of coverage listed below. Sears will also provide free labor for these applicable warranted parts for the two full years. During the first 30 days of purchase, there will be no charges to service the product at your home for issues covered by this warranty. (See exclusions below). For your convenience, IN HOME warranty service will still be available after the first 30 days of purchase, but a trip charge will apply. This charge will be waived if the Craftsman product is dropped off at an authorized Sears location. For the nearest authorized Sears location, please call 1-800-4-MY-HOME®. This warranty applies only while this product is within the United States.

This Warranty does not cover:

- Expendable items which become worn during normal use, including but not limited to blades, spark plugs, air cleaners, belts, and oil filters.
- Standard Maintenance Servicing, oil changes, or tune-ups
- Tire replacement or repair caused by punctures from outside objects, such as nails, thorns, stumps, or glass.
- Repairs necessary because of operator abuse, including but not limited to, damage caused by towing objects beyond the capability of the riding equipment, impacting objects that bend the frame or crankshaft, or over-speeding the engine.
- Repairs necessary because of operator negligence, including but not limited to, electrical and mechanical damage caused by improper storage, failure to use the proper grade and amount of engine oil, failure to keep the deck clear of flammable debris, or failure to maintain the equipment according to the instructions contained in the owner's manual.
- Engine (fuel system) cleaning or repairs caused by fuel determined to be contaminated or oxidized (stale). In general, fuel should be used within 30 days of its purchase date.
- Normal deterioration and wear of the exterior finishes, or product label replacement.
- Riding equipment used for commercial or rental purposes.

### **LIMITED WARRANTY ON BATTERY**

For ninety (90) days from date of purchase, if any battery included with this riding equipment proves defective in material or workmanship and our testing determines the battery will not hold a charge, Sears will replace the battery at no charge. During the first 30 days of purchase, there will be no charges to replace the battery at your HOME. After the first 30 days, for your convenience, IN-HOME warranty service will still be available but a trip charge will apply. This charge will be waived if the Craftsman product is dropped off at an authorized Sears location. For the nearest authorized Sears location, please call 1-800-4-MY-HOME®.

This battery warranty applies only while this product is within the United States.

This warranty gives you specific legal rights, and you may also have other rights, which vary, from state to state.

Sears, Roebuck and Co., Dept. 817WA, Hoffman Estates, IL 60179

