

REPAIR PARTS MANUAL
MODEL NO. 253220
Lawn Tractor

CRAFTSMAN[®]

HOW TO USE THIS MANUAL

This manual is designed to provide the customer with a means to identify the parts on his/her tractor when ordering repair parts. The illustrations may or may not represent the actual assemblies; therefore, it is not recommended to use this manual as a guide to assemble or disassemble the tractor. Some hardware and parts are drawn larger in order to more readily identify them.

Each tractor has its own model number.

The model number for your tractor can be found on the fender under the seat.

When ordering parts, always give the following information:

- Product - Lawn Tractor
- MODEL NUMBER - **253220**
- Part Number
- Part Description

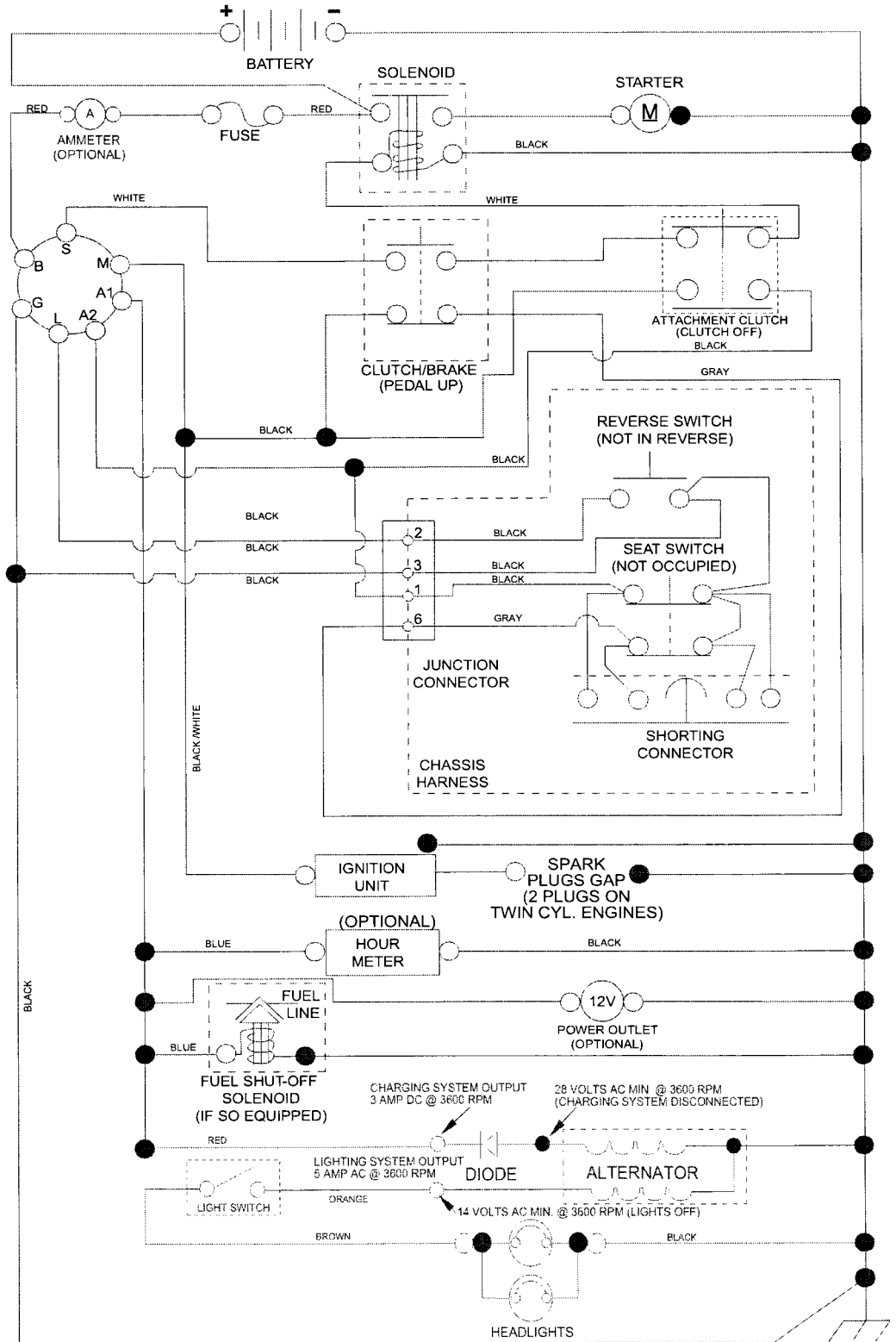
TABLE OF CONTENTS

SCHEMATIC	3
ELECTRICAL.....	4-5
CHASSIS	6-7
DRIVE.....	8-9
ENGINE.....	10-11
STEERING	12
SEAT	13
MOWER DECK	14-15
DECALS.....	16
MOWER LIFT.....	17
WARRANTY.....	BACK PAGE

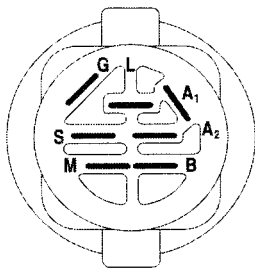
TRACTOR -- MODEL NUMBER 917.253220

SCHEMATIC

SCH11

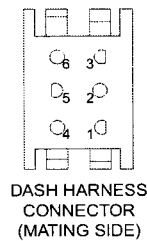
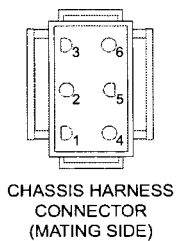


NOTE
YOUR TRACTOR IS EQUIPPED WITH A SPECIAL ALTERNATOR SYSTEM. THE LIGHTS ARE NOT CONNECTED TO THE BATTERY, BUT HAVE THEIR OWN ELECTRICAL SOURCE. BECAUSE OF THIS, THE BRIGHTNESS OF THE LIGHTS WILL CHANGE WITH ENGINE SPEED. AT IDLE THE LIGHTS WILL DIM. AS THE ENGINE IS SPEEDED UP, THE LIGHTS WILL BECOME THEIR BRIGHTEST.



IGNITION SWITCH

POSITION	CIRCUIT	"MAKE"
OFF	M+G+A1	
RUN/OVERRIDE	B+A1	
RUN	B+A1	L+A2
START	B + S + A1	

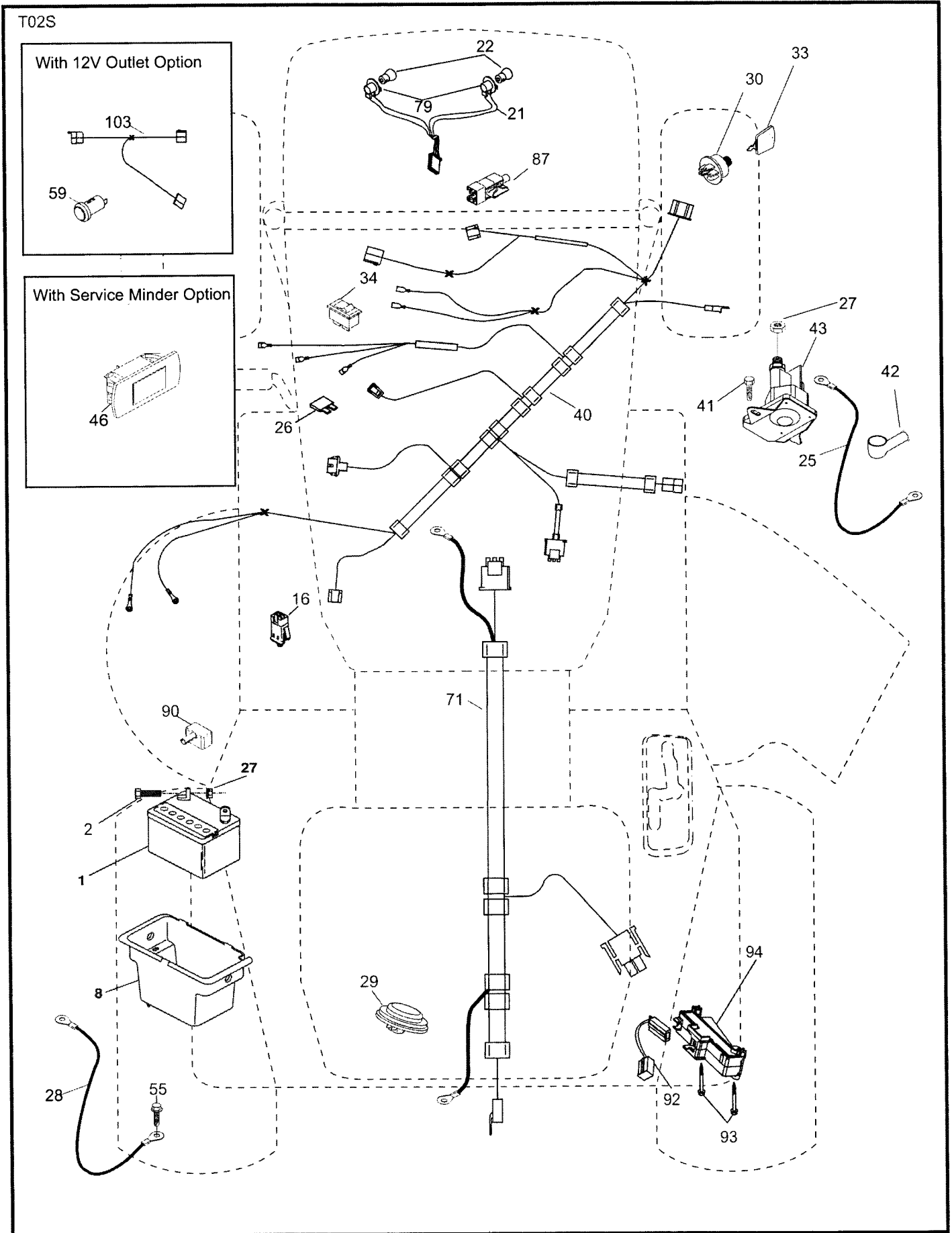


WIRING INSULATED CLIPS
NOTE: IF WIRING INSULATED CLIPS WERE REMOVED FOR SERVICING OF UNIT, THEY SHOULD BE RE-INSTALLED TO PROPERLY SECURE YOUR WIRING.

NON-REMOVABLE CONNECTIONS
REMOVABLE CONNECTIONS

TRACTOR - - MODEL NUMBER 917.253220

ELECTRICAL



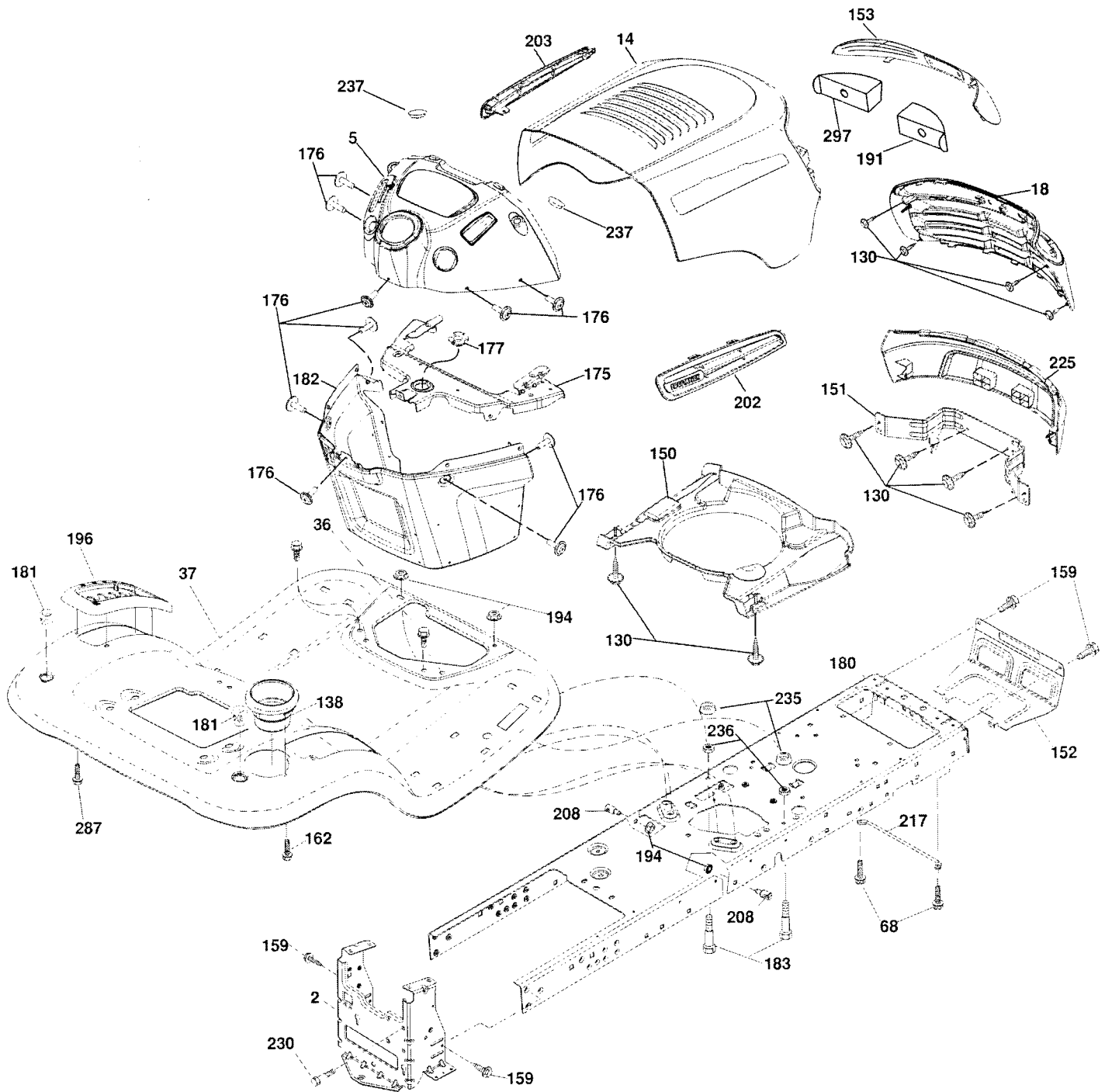
TRACTOR - - MODEL NUMBER 917.253220**ELECTRICAL**

KEY NO.	PART NO.	DESCRIPTION
1	163465	Battery
2	74760412	Bolt Hex Hd 1/4-20 unc x 3/4
8	193228	Box Battery
16	176138	Switch Interlock Push-In
21	400252	Harness Socket Light w/4152J
22	4152J	Bulb Light
25	412894	Cable Starter
26	175158	Fuse
27	73510400	Nut Keps Hex 1/4-20 unc
28	198885	Cable, Ground
29	401545	Switch, Seat
30	193350	Switch, Ign
33	411934	Key/Chain
34	110712X	Switch Light / Reset
40	401098	Harness Ign. Dash
41	17720408	Screw Thd Cut 1/4-20 x 1/2
42	131563	Cover, Terminal
43	192507	Solenoid
55	17060512	Screw Thdrol 5/16-18 x 3/4 TYTT
71	400449	Harness Ign.
79	175242	Bulbholder Asm. Incandescent
87	197802	Switch Interlock Clutch Cable
90	400725	Cover Terminal Battery
92	196615	Harness Pigtail
93	192540	Screw Plastite 10-14 x 2.0
94	191834	Module Reverse ROS

NOTE: All component dimensions give in U.S. inches
1 inch = 25.4 mm

TRACTOR - - MODEL NUMBER 917.253220

CHASSIS ASSEMBLY



chassis-tex_TEX LT PRED_12_r1

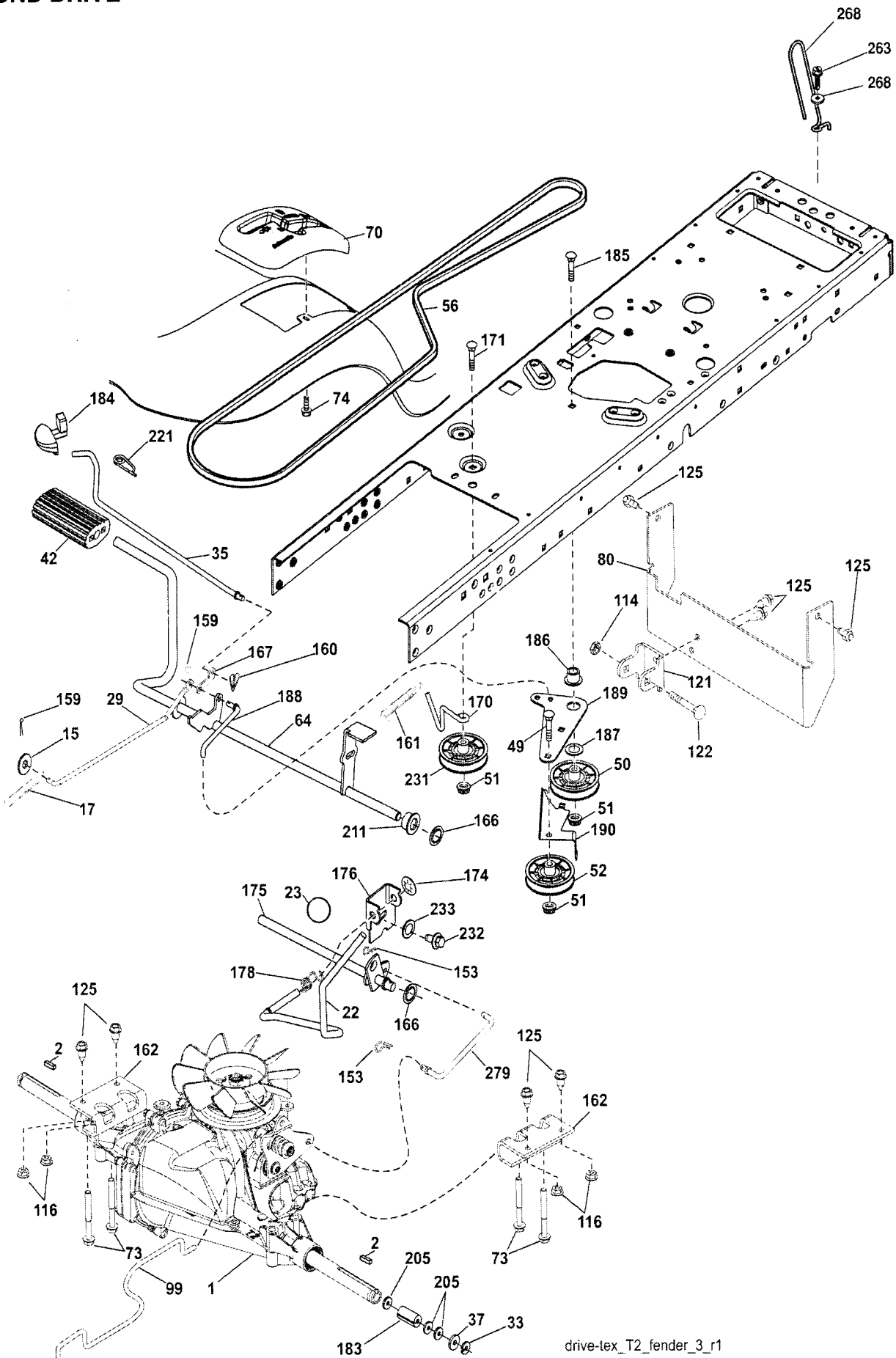
TRACTOR - - MODEL NUMBER 917.253220**CHASSIS ASSEMBLY**

KEY NO.	PART NO.	DESCRIPTION
2	194263	Drawbar
5	408874X428	Dash
14	198416X615	Hood
18	400551	Grille
36	17060512	Screw 5/16-18 x 3/4
37	414872X615	Fender
68	17490508	Screw Thdrol 5/16-18 x 1/2
130	416358	Screw 10 x .750 BOS Thread
138	193224X428	Cupholder
150	400267	Duct Heat Hood
151	187568	Bracket Pivot
152	194329	Shield Browning/Debris
153	400550X599	Lens Bar
159	17000612	Screw Hexwsh Thdrol 3/8-16 x 3/4
162	142432	Screw Hex Wsh Hi-Lo 1/4 x 1/2
175	199472	Crossmember
176	400776	Screw 10-24 x 5/8 Wshd Qdrx
177	195228	Bushing Steering
180	194260	Chassis
181	193102X428	Bushing Mtg. Fender Crgo.
182	407176	Dash Lower
183	74780520	Bolt Fin Hex 5/16-18 x 1-1/4
191	401827	Reflector Insert RH
194	73900500	Nut Lock Hex Flange 5/16-18
196	414579	Console Asm. Deck Lift
202	400263X428	Vent Side Hood RH
203	400264X428	Vent Side Hood LH
217	409167	Rod Pivot Chassis
225	400549X615	Bumper
228	195161	Stud Fastener
230	170165	Bolt Shoulder 5/16-18
235	406129	Spacer Fender
236	73930500	Nut center Lock 5/16-18
237	403704	Plug Mount Cargo
287	17600406	Screw Hex Washhead 1/4-20 x 3/8
297	416500	Reflector Insert RH

NOTE: All component dimensions give in U.S. inches
1 inch = 25.4 mm

TRACTOR -- MODEL NUMBER 917.253220

GROUND DRIVE



drive-tex_T2_fender_3_r1

TRACTOR - - MODEL NUMBER 917.253220

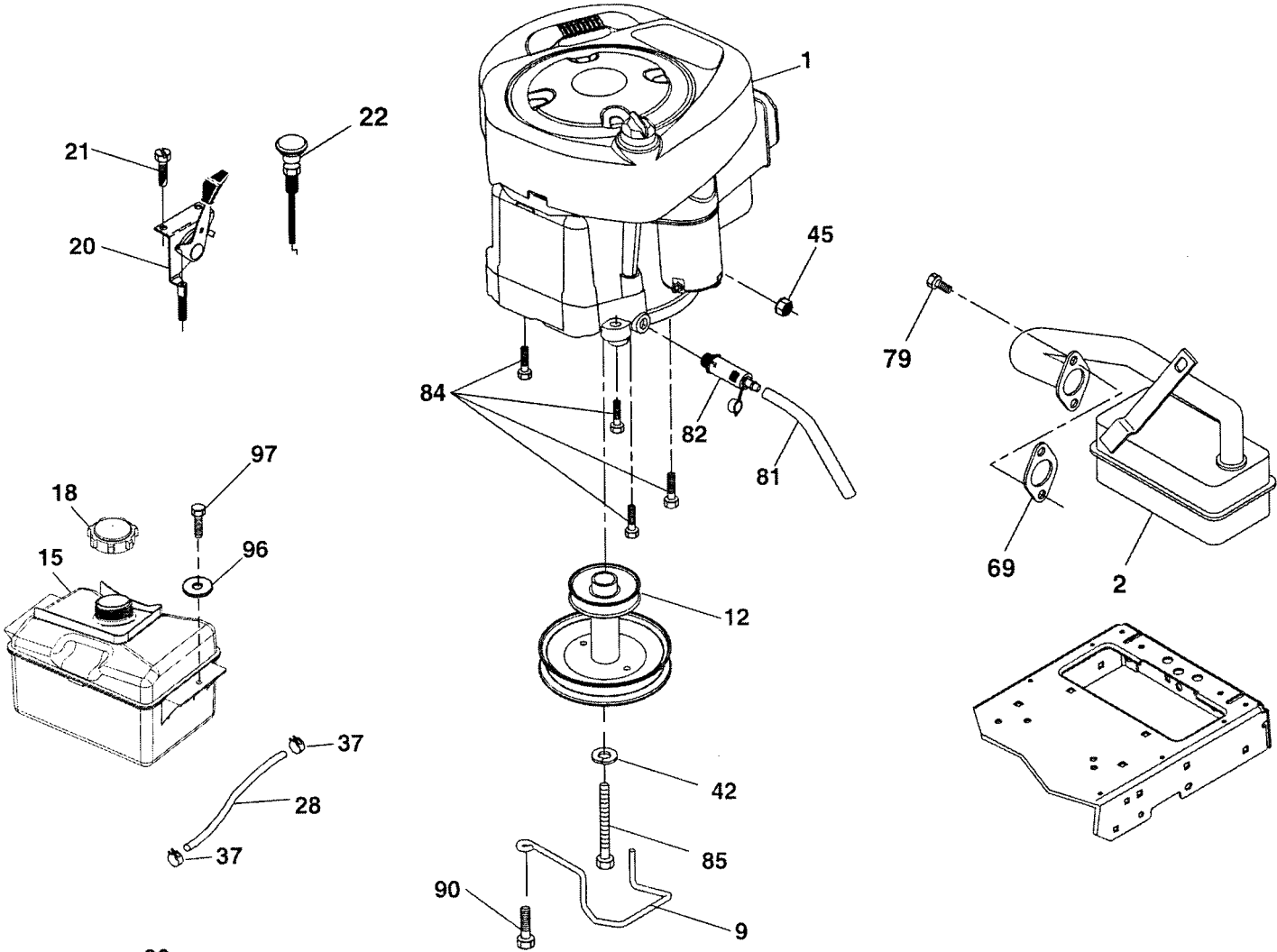
GROUND DRIVE

KEY NO.	PART NO.	DESCRIPTION	KEY NO.	PART NO.	DESCRIPTION
1	418219	Transaxle, Hydro Gear T2 (See Transaxle Breakdown)	161	105709X	Spring, Return, Clutch
2	123583X	Key Square	162	408784	Adapter Transaxle
15	19131316	Washer 13/32 x 13/16 x 16 Ga.	166	197290	Nut Push .625
17	197296	Spring, Brake	167	405257	Latch Brake Parking
22	197660	Rod Shift	170	413430	Keeper V-Idler
23	130564	Knob	171	72110622	Bolt
29	408391	Rod, Brake	174	197289	Nut Push
33	12000001	Ring E	175	408539	Shaft Asm Shift
35	401031	Rod, Brake, Park	176	196214	Arm Clevis Rod Shift
37	121749X	Washer 25/32 x 1-1/4 x 16 Ga.	178	197456	Spring Shift
42	8883R	Cover, Foot Pedal	184	199996X505	Handle Parking Brake
49	72110614	Bolt	185	72110620	Bolt
50	194327	Pulley Idler Flat	186	194321	Spacer Retainer
51	73900600	Lock Nut 3/8-16	187	19133210	Washer
52	194326	Idler V-Groove 910" Offset	188	194323	Link Clutch Ground Drive
56	125907X	V-Belt, Drive	189	194317	Bellcrank Ground Drive
64	196200	Shaft Asm. Pedal Brake Control	190	194318	Keeper Bellcrank Ground Drive
70	193220X428	Console	205	121748X	Washer 25/32 x 1-5/8 x 16 Ga.
73	74490544	Bolt Hex 5/16-18 Gr. 5	211	196212	Bushing
74	142432	Screw 1/4 x 1/2	221	403187	Retainer Spring Clip Handle
80	408393	Strap Torque	231	407287	Idler V-Groove 1.688" Offset
99	408418	Rod Spring Bypass	232	74780716	Bolt 7/16-14 x 1 Gr 5
114	73800500	Nut Lock 5/16-18 unc	233	405296	Washer Serrated
116	73900500	Nut Lock Hex Flange 5/16-18	263	17000612	Screw Hexwsh Thdr 3/8-16 x 3/4
121	175611	Bracket Strap Torque	268	182402	Guard Muffler
122	72010520	Bolt 5/16-18 x 2.50	275	19131614	Washer 13/32 x 1 x 14 Ga.
125	17000512	Screw 5/16-18 x 3/4	279	408538	Link Shift
153	4497H	Retainer Spring 1"			
159	76020412	Pin Cotter 1/8 x 3/4			
160	169484	Retainer Clip			

NOTE: All component dimensions give in U.S. inches
1 inch = 25.4 mm

TRACTOR - - MODEL NUMBER 917.253220

ENGINE



OPTIONAL EQUIPMENT
Spark Arrester

engine-tex_BS_5

TRACTOR - - MODEL NUMBER 917.253220

ENGINE

KEY NO.	PART NO.	DESCRIPTION
1	-----	Engine B&S Model No. 31P977-1094-B1(See Engine Breakdown)
2	137352	Muffler
9	194319	Keeper Belt Engine
12	401985	Pulley Engine
15	407545	Tank Fuel
18	197725	Cap Asm
20	176636X428	Control Throttle/Choke
21	416358	Screw 10 x 3/4 Single Lead-Hex
22	187771X428	Control Choke
28	137040	Fuel Line
29	137180	Spark Arrester Kit
37	123487X	Clamp Hose
42	STD551143	Washer Lock 7/16
45	73510400	Nut Keps Hex 1/4-20 unc
69	165291	Gasket
79	192334	Screw Socket Hd 5/16-18 x .75
81	148456	Tube Drain Oil Easy
82	181654	Plug Drain Oil
84	17060620	Screw 3/8-16 x 1-1/4
85	173937	Bolt Hex 7/16-20 x 4 x Gr. 5-1.5
90	17000616	Screw 3/8-16 x 1.0
96	19091416	Washer 9/32 x 7/8 x 16 Ga.
97	17670412	Screw 1/4-20 x 3/4

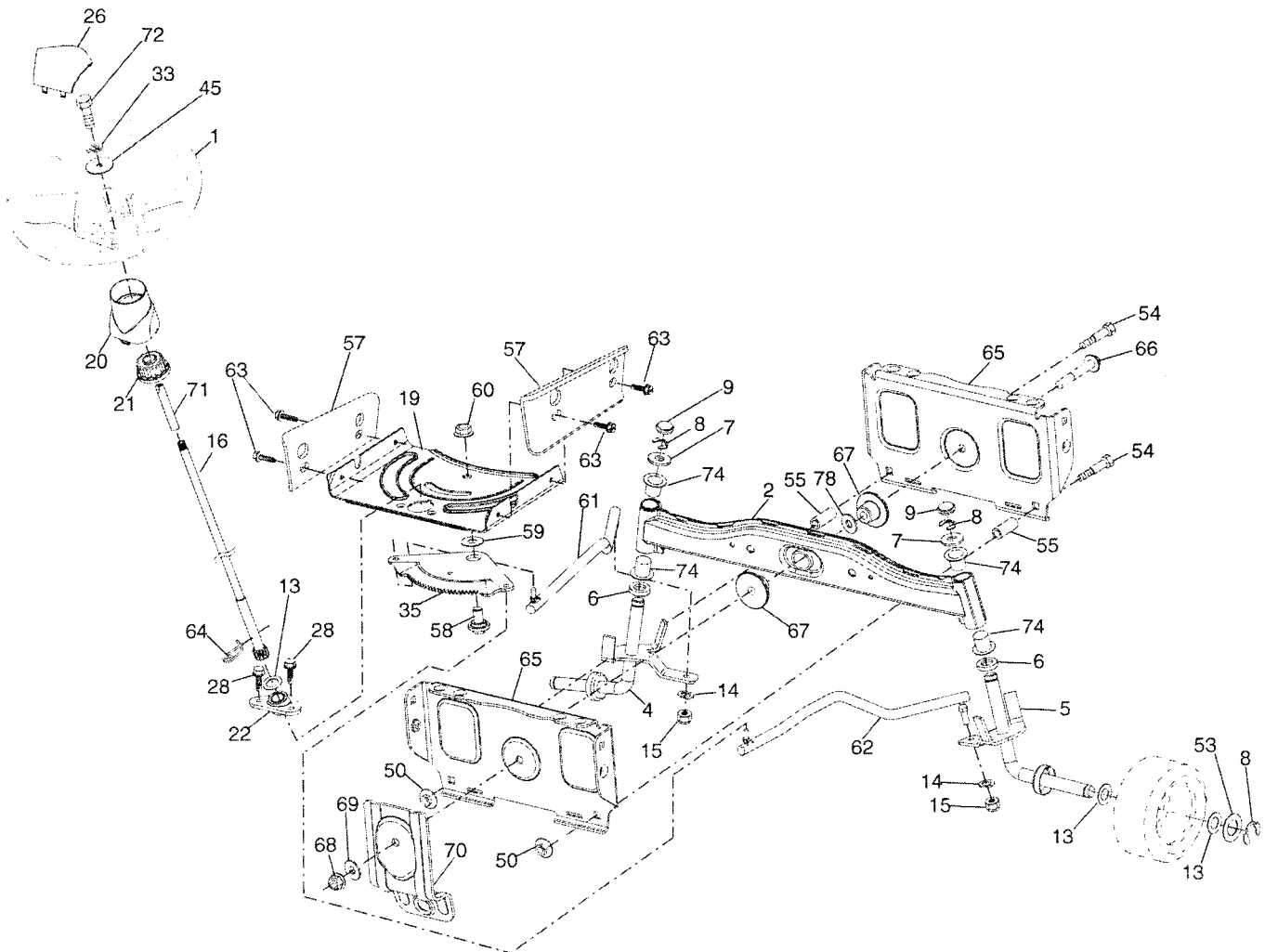
NOTE: All component dimensions give in U.S. inches
1 inch = 25.4 mm

Engine Power Rating Information

The gross power rating for individual gas engine models is labeled in accordance with SAE (Society of Automotive Engineers) code J11940 (Small Engine Power & Torque Rating Procedure), and rating performance has been obtained and corrected in accordance with SAE J1995 (Revision 2002-5). Actual gross engine power will be lower and is affected by, among other things, ambient operating conditions and engine-to-engine variability. Given both the wide array of products on which engines are placed and the variety of environmental issues applicable to operating the equipment, the gas engine will not develop the rated gross power when used in a given piece of power equipment (actual "on-site" or net horsepower). This difference is due to a variety of factors including, but not limited to, accessories (air cleaner, exhaust, charging, cooling, carburetor, fuel pump, etc.), application limitations, ambient operating conditions (temperature, humidity, altitude), and engine-to-engine variability. Due to manufacturing and capacity limitations, Briggs & Stratton may substitute an engine of higher rated power for this Series engine.

TRACTOR - - MODEL NUMBER 917.253220

STEERING ASSEMBLY



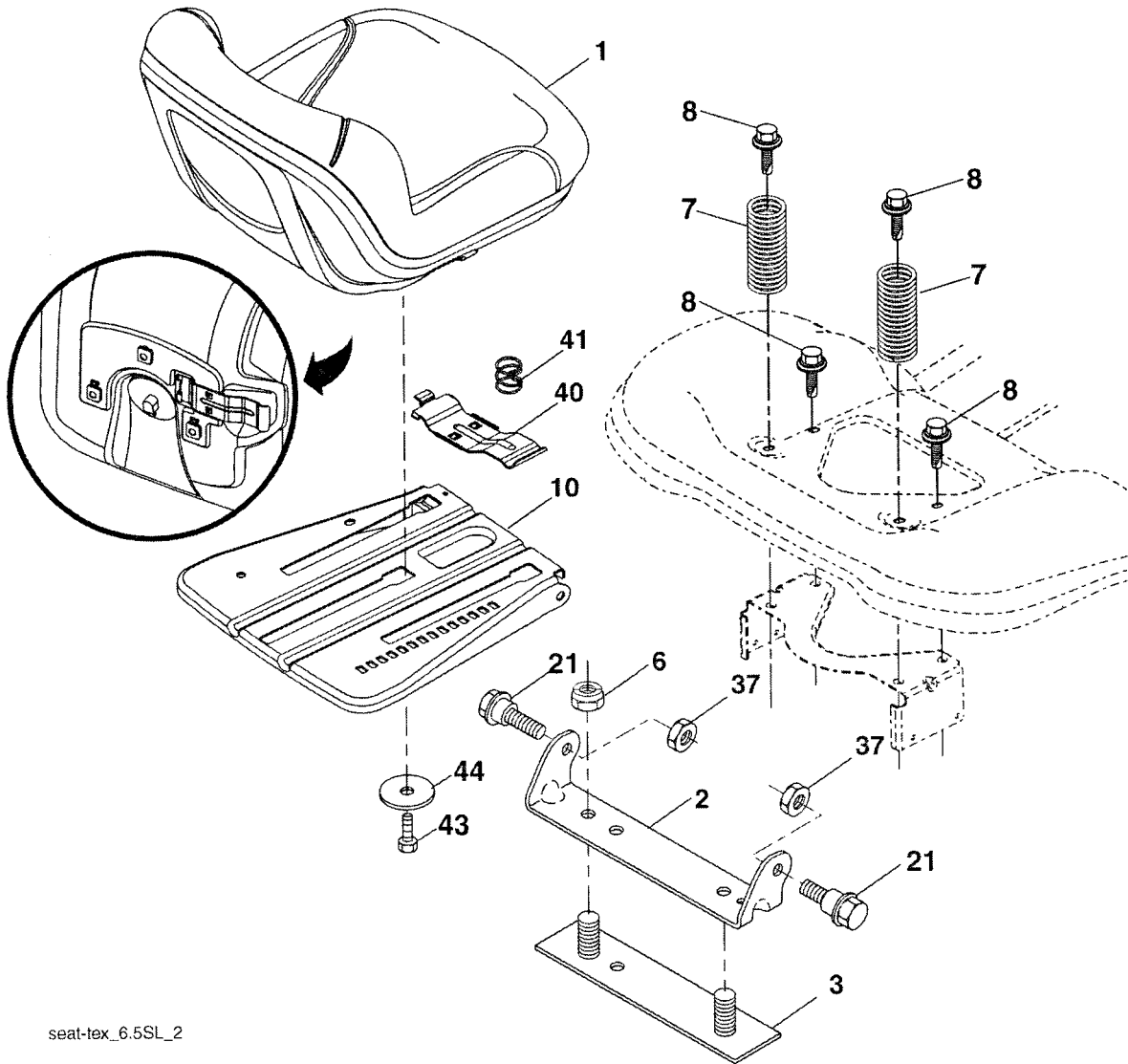
steering-tex_OPP_1

KEY NO.	PART NO.	DESCRIPTION	KEY NO.	PART NO.	DESCRIPTION
1	414851X428	Wheel, Steering	55	414736	Spacer Brace Axle
2	418168	Axle Asm., Front	57	407465	Bracket Upstop
4	403087	Spindle Asm., LH	58	194747	Bolt Shoulder Sector Pivot CFM
5	403088	Spindle Asm., RH	59	194748	Washer Thrust Sector Steering
6	6266H	Bearing, Race Thrust Harden	60	73971000	Nut Flange Lock 5/8-11
7	121748X	Washer 25/32 x 1-5/8 x 16 Ga.	61	194740	Draglink, LH
8	12000029	Ring, Clip #T5304-75	62	194741	Draglink, RH
9	121232X	Cap, Spindle	63	17000512	Screw 5/16-18 x 3/4
13	121749X	Washer 25/32 x 1-1/4 x 16 Ga.	64	199849	Retainer Clip Spring Steering
14	STD551137	Washer, Lock Hvy Hlcl Spr 3/8	65	194734	Brace Axle Front
15	73540600	Nut, Crown Lock 3/8-24 unf	66	71020748	Bolt Hex Fghd 7/16-14 x 3 Serr
16	196074	Shaft Steering	67	194737	Bushing PM Front Axle
19	194729	Plate Steering	68	73900700	Nut Lock Flange 7/16-14 Gr. 5
20	400803X428	Boot, Steering	69	199162	Washer 1.5 x .505 x .118
21	186737	Adapter, Wheel Steering	70	196197	Bracket Deck Susp. Front
22	194845	Bushing, Strg. Blk	71	196075	Shaft Ext. Steering
26	414852X428	Insert, Wheel Steering	72	74780572	Bolt 5/16-18 x 4.5 Gr. 5
28	17000612	Screw 3/8-16 x 3/4	74	3366R	Bearing Col. Strg.
33	10040500	Washer Lock 5/16	78	57079	Washer Thrust .515 x .750 x .033
35	194732	Gear, Sector Plate			
45	19113812	Washer 11/32 x 2-3/8 x 12 Ga.			
50	73900600	Nut Lock Flg 3/8-16 unc			
53	188967	Washer Hardened .793 x 1.637 x .060			
54	74760636	Bolt Hex HS 3/8-16 unc x 2-1/4			

NOTE: All component dimensions give in U.S. inches
1 inch = 25.4 mm

TRACTOR -- MODEL NUMBER 917.253220

SEAT ASSEMBLY



seat-tex_6.5SL_2

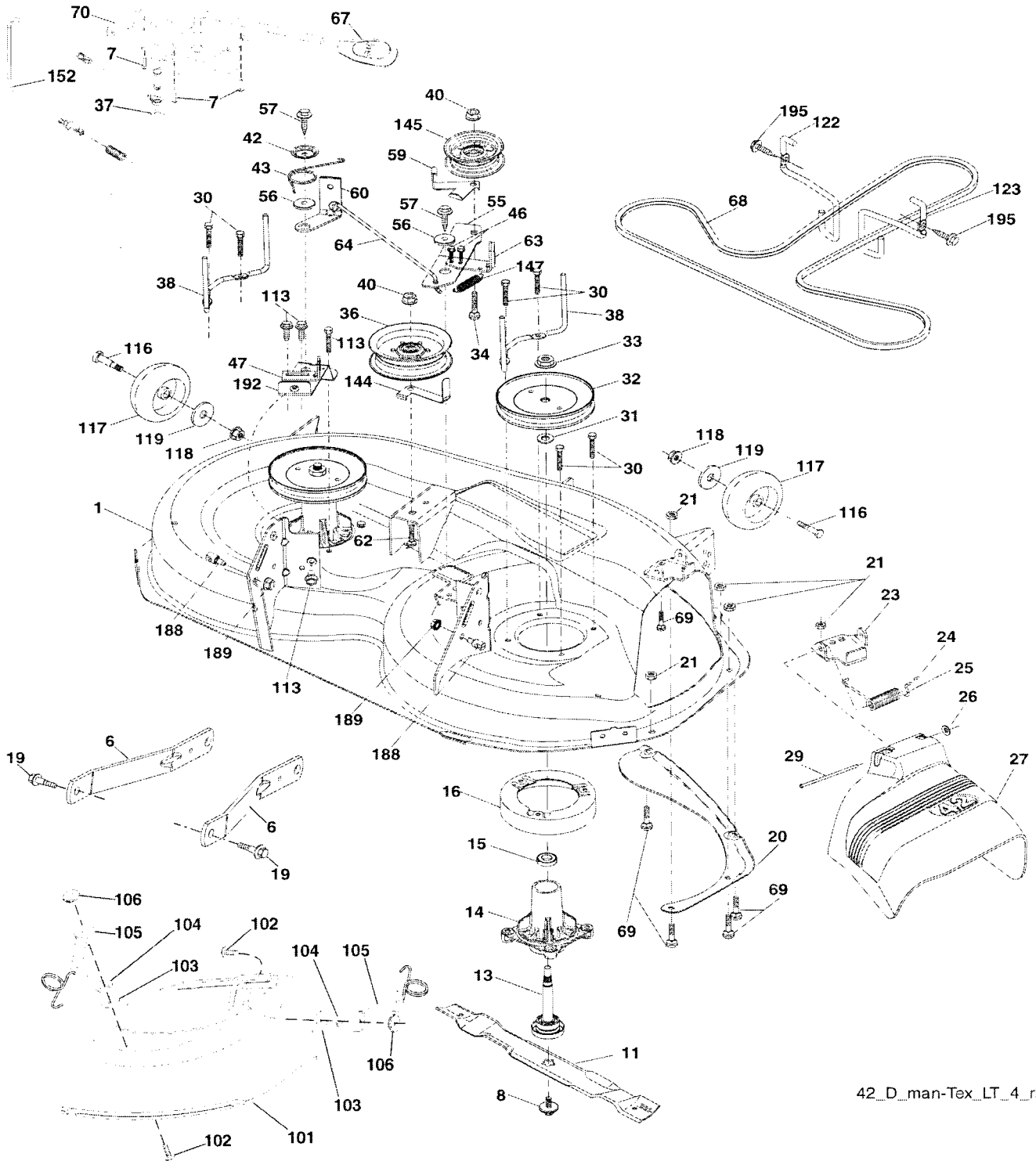
KEY NO.	PART NO.	DESCRIPTION
1	197516	Seat
2	180166	Bracket Pivot Fender
3	140675	Strap, Asm Fender
6	STD541437	Nut, Lock W/Ins. 3/8-16 unc
7	124181X	Spring, Seat Cprsn
8	171877	Bolt 5/16-18 unc x 3/4 w/Sems
10	196977	Pan, Seat
21	171852	Bolt, Shoulder 5/16-18

KEY NO.	PART NO.	DESCRIPTION
37	STD541431	Nut, Lock 5/16-18 unc
40	197661	Handle Slide Seat
41	198200	Spring Latch Seat
43	74760612	Bolt 3/8-16 x 3/4
44	19133812	Washer 13/32 x 2-3/8 x 12 Ga.

NOTE: All component dimensions give in U.S. inches
1 inch = 25.4 mm

TRACTOR - - MODEL NUMBER 917.253220

MOWER DECK



42_D_man-Tex_LT_4_r2

TRACTOR - - MODEL NUMBER 917.253220

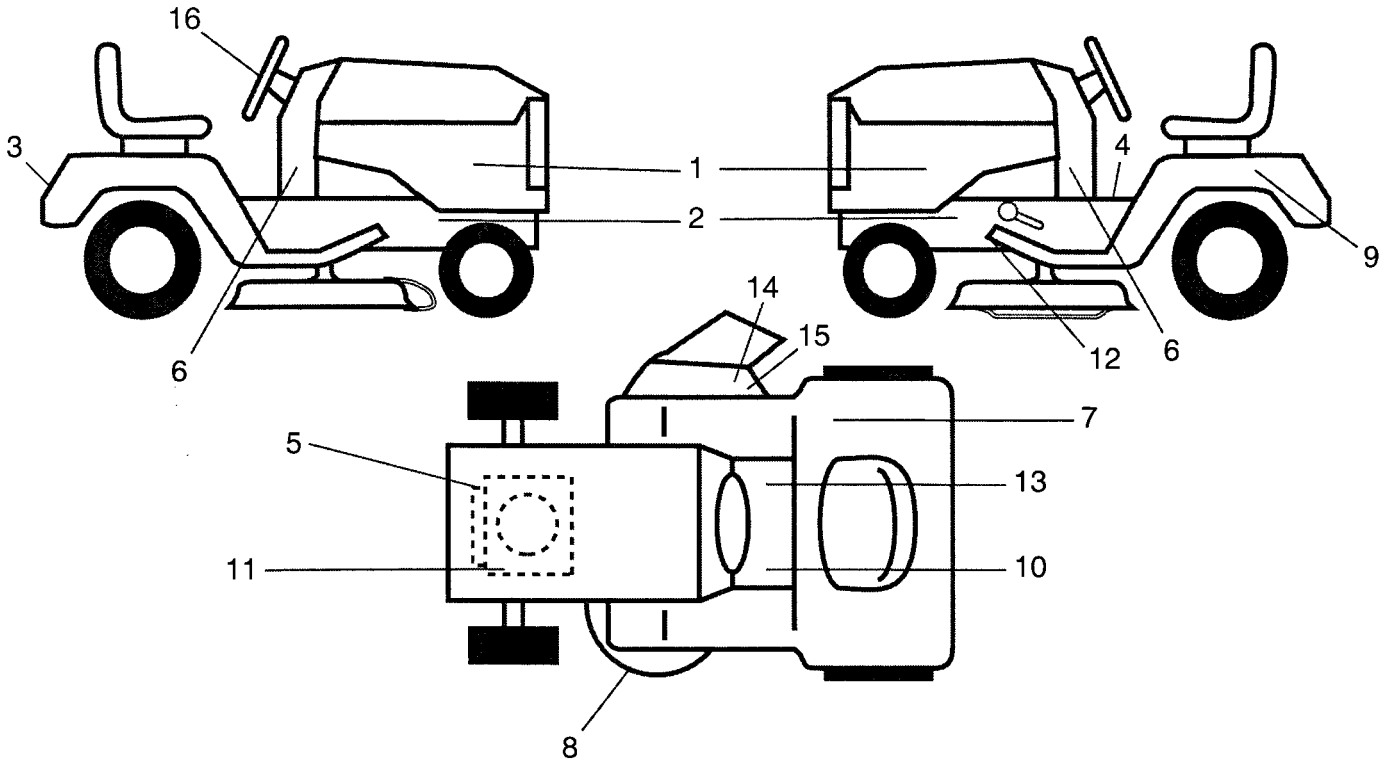
MOWER DECK

KEY NO.	PART NO.	DESCRIPTION	KEY NO.	PART NO.	DESCRIPTION
1	196495	Mower Housing	62	72110616	Bolt Rdhd Sqnk 3/8-16 unc x 2
6	195186	Arm Suspension	63	199477	Arm Brake Mower
7	416358	Screw 10 x .750 BOS Thread	64	199790	Linkage Brake
8	193003	Bolt/Washer Asm 7/16-20 unf	67	198398X428	Handle, Clutch Cable
11	138971	Blade, 42" Hi-Lift (For bagging or discharge)	68	197253	V-Belt
13	192872	Shaft Assembly, Mandrel	69	72140505	Bolt Rdhd Sqnk 5/16-18 x 5/8
14	187281	Housing, Mandrel	70	401246	Clutch Asm. Manual
15	110485X	Bearing, Ball, Mandrel	101	193107	Cover Mulching
16	174493	Stripper, Mower Deck	102	71081010	Screw Pan HD Phillip 10-24 x 5/8
19	196539	Bolt, Shoulder	103	19061216	Washer #10
20	159770	Baffle, Vortex	104	10071000	Washer Lock #10
21	STD541431	Nut, Crownlock 5/16-18 unc	105	160793	Latch Asm Mulch
23	192557	Bracket, Deflector	106	2029J	Nut Weld .327/.304 #10-24
24	105304X	Cap, Sleeve	113	17000510	Screw 5/16-18
25	197026	Spring, Torsion, Deflector	116	4898H	Bolt, Shoulder
26	110452X	Nut, Push	117	188606	Wheel, Gauge
27	193108X428	Shield, Deflector	118	73930600	Nut, Crownlock 3/8-1
29	131491	Rod, Hinge	119	19121414	Washer 13/32 x 7/8 x 14 Ga.
30	173984	Screw Thdrol Rolling Wsh Hd	122	197258	Keeper Belt Eng. LH
31	187690	Washer, Spacer	123	197259	Keeper Belt Eng. RH
32	197473	Pulley, Mandrel	144	199204	Keeper Belt
33	400234	Nut, Toplock, Flanged	145	193197	Pulley, Idler, Flat
34	72110612	Bolt Carr Sh. 3/8-16 x 1-1/2 Gr. 5	147	401971	Spring Return
36	197379	Pulley Idler	152	408714	Cable Clutch Manual w/Spr.
37	19131316	Washer 13/32 x 13/16 x 16 Ga.	188	195161	Stud Fastener
38	199189	Keeper Belt LH Mandrel	189	73900500	Nut Lock Hex Flange
40	73900600	Nut, Lock Flg. 3/8-16 unc	192	197260	Bracket Brake Stand LH
42	198410	Spring Torsion Brake	195	17000612	Screw Hexwsh Thdr 3/8-16 x 3/4
43	197256	Spring Torsion Retainer	--	192870	Mandrel Assembly (Includes hous- ing, shaft assembly, and bearing only - pulley/nut/washer and blade bolt/washers not included)
46	137729	Screw Thd Roll 1/4-20 x 5/8	--	405126	Replacement Mower, Complete
47	197250	Bracket Clutch Cable			
55	197249	Arm, Idler			
56	199092	Spacer, Retainer			
57	17000616	Screw Hexwsh Thd 3/8-16 x 1			
59	141043	Guard, Tuv Idler (94)			
60	197261	Arm Brake Mower			

NOTE: All component dimensions give in U.S. inches
1 inch = 25.4 mm

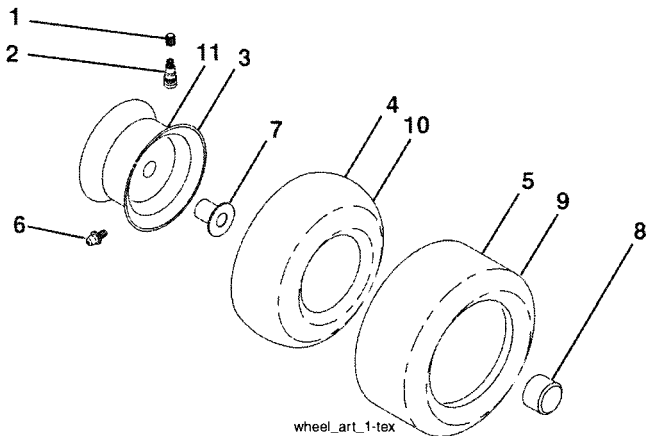
TRACTOR -- MODEL NUMBER 917.253220

DECALS



KEY NO.	PART NO.	DESCRIPTION	KEY NO.	PART NO.	DESCRIPTION
1	409079	Decal, Panel SD	14	182166	Decal, Cutfinger CE
2	159736	Decal, Chassis Hot Muffler	15	196357	Decal, Deflect Warning Cutfinger Sym.
3	411697	Decal, Fender	16	420121	Decal, Wheel Steering
4	400389	Decal, Oper/Wrng.	--	193226X428	Pad, Footrest, LH
5	418178	Decal, Engine HP	--	193227X428	Pad, Footrest, RH
6	405070	Decal, Chassis	--	162598	Decal, Drawbar Load Limit
7	180432	Decal, Fender 100 DB/CE	--	166960	Decal, Bypass
8	160396	Decal, V-Belt Schematic	--	420049	Manual, Parts
9	145005	Decal, Battery Dngc/Poi	--	420045	Manual, Operator's Euro
10	159737	Decal, Brake/Clutch Sym.	--	420046	Manual, Operator's Scand
11	196841	Decal, Engine Warning Sym.	--	420047	Manual, Operator's E-Bloc
12	199135	Decal, Mower V-Belt Schematic	--	420048	Manual, Operator's Baltic
13	140837	Decal, Saddle Brake Parking			

WHEELS & TIRES

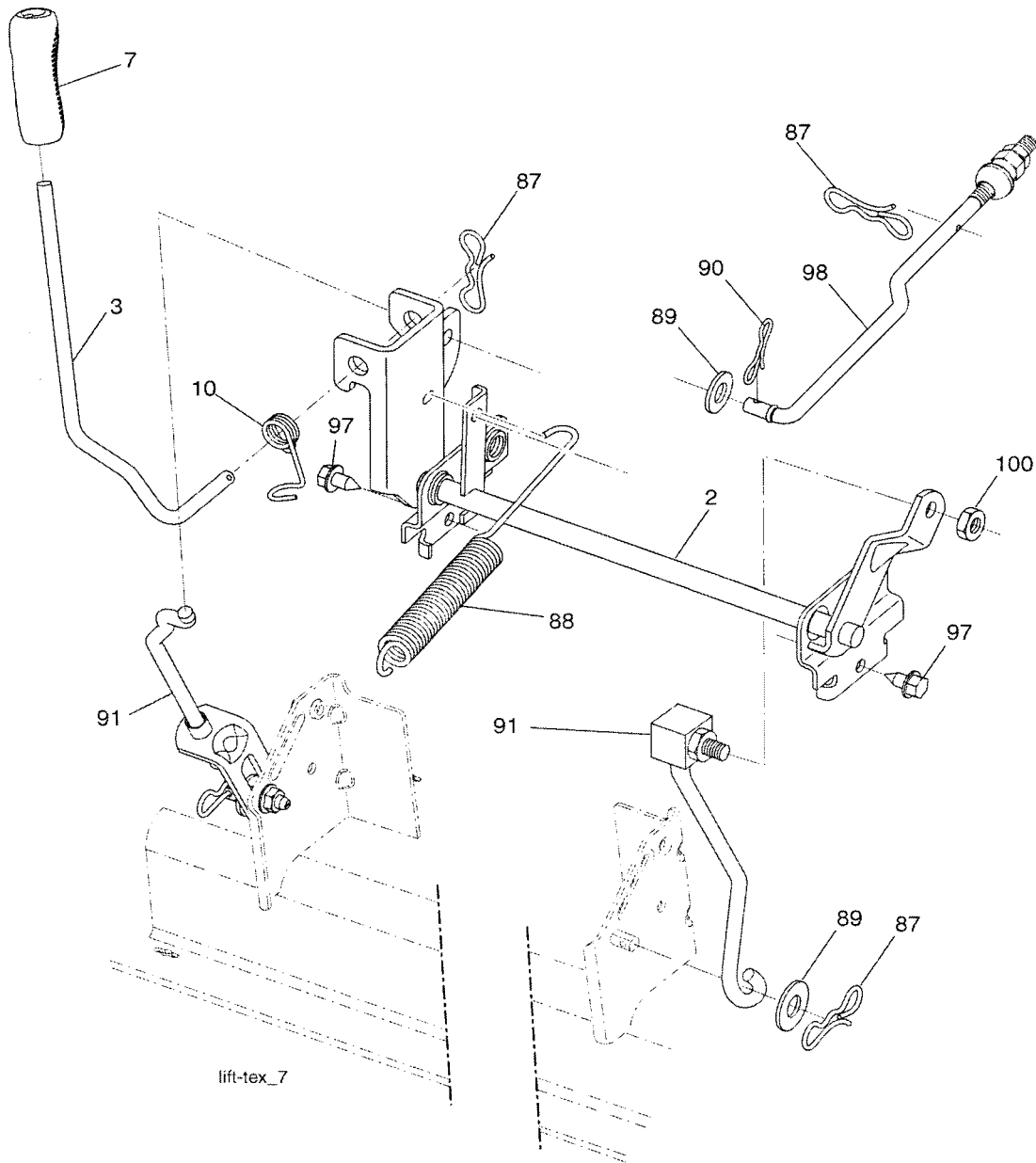


KEY NO.	PART NO.	DESCRIPTION
1	59192	Cap, Valve, Tire
2	65139	Stem, Valve
3	106732X645	Rim Assembly, Front
4	59904	Tube, Front
5	106222X	Tire, Front
6	278H	Fitting, Grease
7	9040H	Bearing, Flange
8	104757X645	Cap, Axle (Front Wheel Only)
9	106268X	Tire, Rear
10	7152J	Tube, Rear
11	106108X645	Rim Assembly, Rear
--	144334	Sealant, Tire (10 oz. Tube)

NOTE: All component dimensions give in U.S. inches
1 inch = 25.4 mm

TRACTOR - - MODEL NUMBER 917.253220

LIFT ASSEMBLY



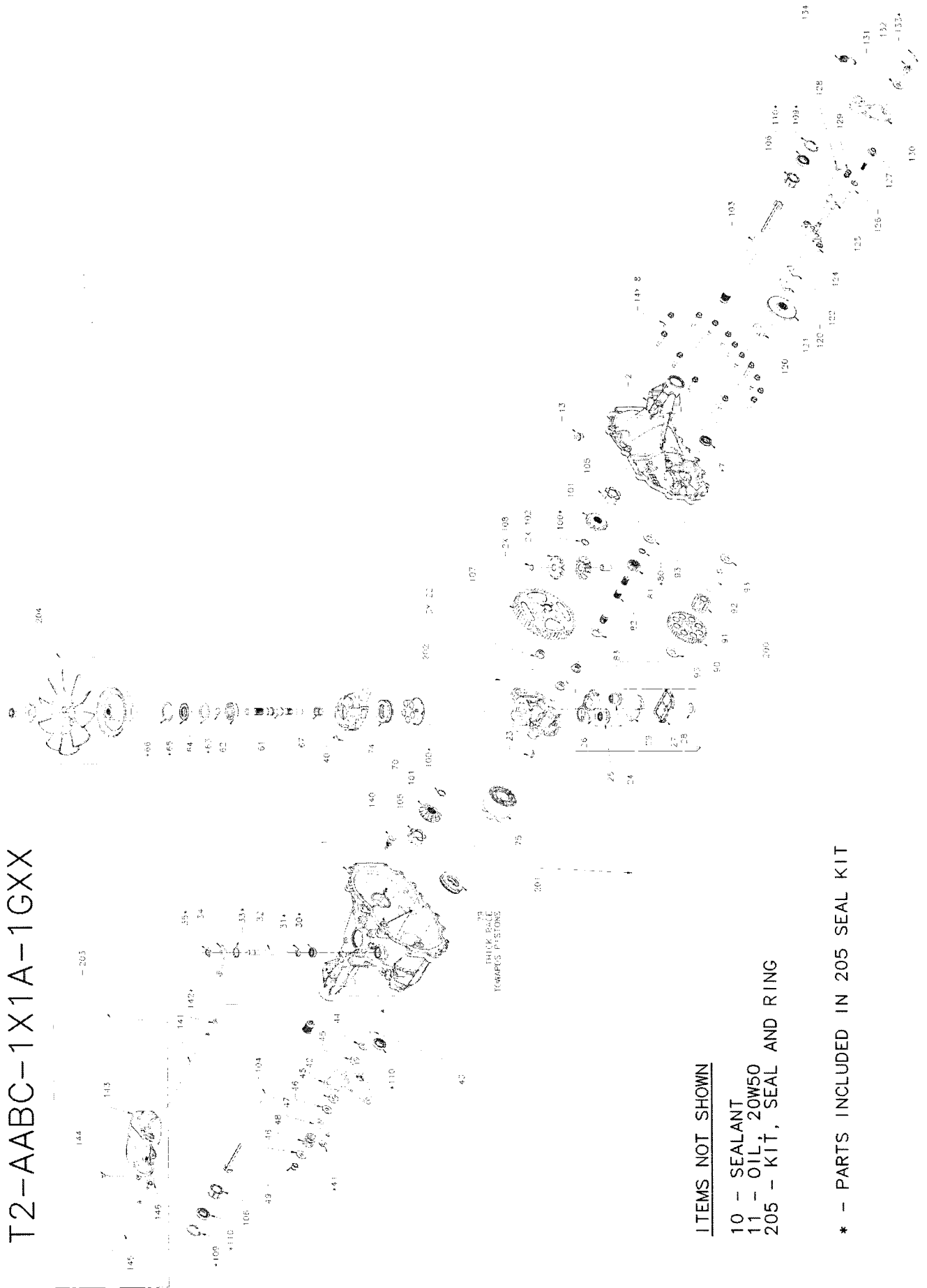
KEY NO.	PART NO.	DESCRIPTION
2	195223	Shaft Asm., Lift
3	195231	Lever Asm., Lift RH
7	196492X428	Grip, Lever
10	196314	Spring Torsion
87	194209	Pin Cotter 7/16 Bow Tie Lock
88	410710	Spring Lift Assist
89	19191912	Washer Clear Zinc
90	194208	Pin Cotter 5/16 Bow Tie Lock

KEY NO.	PART NO.	DESCRIPTION
91	195181	Link Lift Susp Mower Rear
97	17000612	Screw 3/8-16 x .75
98	195270	Link Lift Susp. Front Mower
100	73930600	Nut Centerlock 3/8 - 16 unc

NOTE: All component dimensions give in U.S. inches
1 inch = 25.4 mm

**TRACTOR - - MODEL NUMBER 917.253220
HYDRO GEAR T2 TRANSAXLE MODEL T2**

T2-AABC-1X1A-1GXX



ITEMS NOT SHOWN

- 10 - SEALANT
- 11 - OIL 20W50
- 205 - KIT, SEAL AND RING

* - PARTS INCLUDED IN 205 SEAL KIT

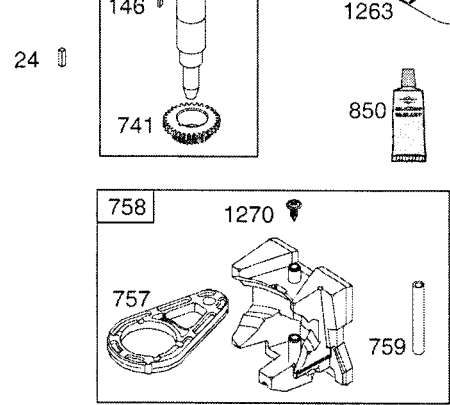
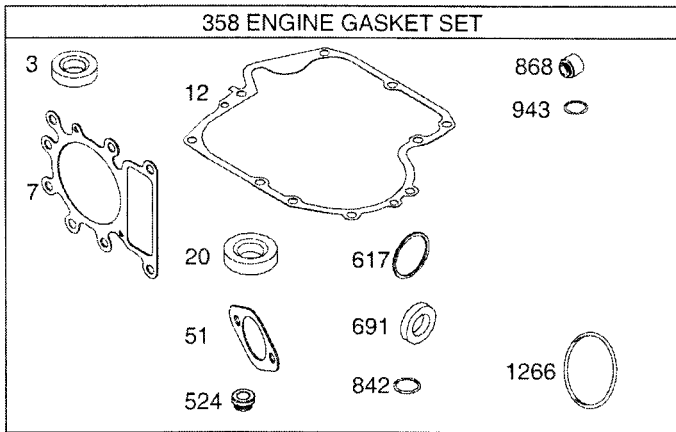
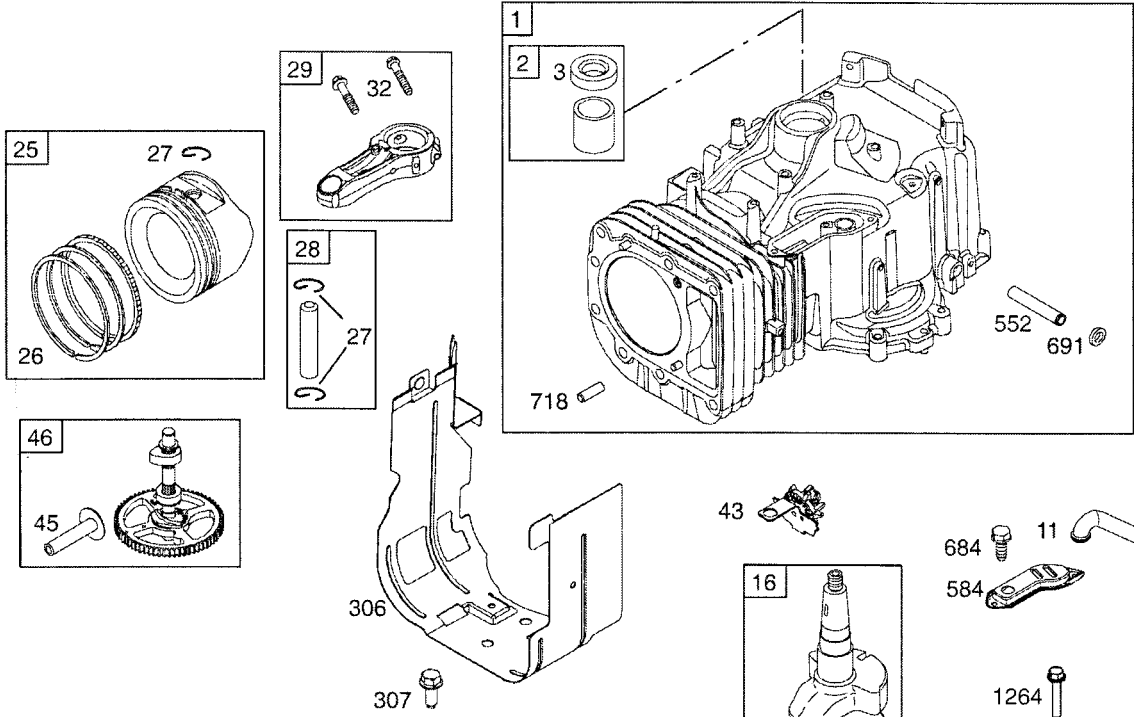
TRACTOR - - MODEL NUMBER 917.253220

HYDRO GEAR T2 TRANSAXLE MODEL T2

KEY NO.	PART NO.	DESCRIPTION	KEY NO.	PART NO.	DESCRIPTION
1	412015	Kit, Hsg, Main	91	412049	Gear, Jackshaft 11t
2	412016	Kit, Hsg, Side	92	412050	Jack Shaft (P1n)
7	412018	Seal, Lip .50xl.0x.25 Tc	93	170418	Washer.51x1.10x.03
8	170356	Hfhcs 1/4-20 X 1 .25"	100	170393	Ring, Ret - Spiral .625 Ext
10	178322	Sealant	101	401260	Gear, Bevel 12t Spiine Id
11		Oil, 20w50	102	401261	Gear, Bevel 12t .50 Id
13	170434	Plug 9/16-18 (Metal)	103	170391	Shaft, Axle, Keyed, 11.39 X 0.75
20	412020	C-section Mach	104	170392	Shaft. Axle, Keyed, 16.99 X 0.75
21	412021	Brg, Jrnl 15mm X 17mm X 15mm L	105	412052	Bushing, Inboard
22	412022	Bolt, Hex Flange. 3/8-16, C/s	106	412053	Bushing, Outboard
23	412023	Plate, Bypass	107	412054	Gear, 53t Bull
24	170420	Assembly, Check Plug w/Washer. .027	108	421055	Pin. Differential
25	412024	Assembly, Check Plug w/Washer, .027, Spring	109	412056	Ring, Ret, Int Axle
26	412025	Base, Filter	110	142961	Seal, Lip.75x1.125x.25 Tc
27	412026	Cover, Filter	120	142883	Puck, Brake
28	170395	Ring, Magnet	121	412057	Rotor, Brake
29	412027	Deflector	122	142882	Plate, Puck
30	412028	Seal, Lip.375x.75x.25 Tc	124	142929	Yoke, Brake
31	412029	Ring, Ret .375 Ext	125	142887	Pin. Brk .31x.73 Plated
32	412030	Rod, Actuator Bypass	126	161174	Spacer .26x.57x.87
33	412031	Ring, Ret .750 Int	127	170410	Hfhcs 1/4-20 X 2.0 W/patch
34	412032	Arm. Bypass	128	142892	Hhcs 1/4-20x1 (Patch)
35	412033	Ring, Ret .375 Ext	129	161181	Spring. Comp Brake Anti-drag
40	412034	Trunnion. Swash Plate	130	142954	Arm, Brake
41	412035	Screw 5/16-18x1	131	142884	Washer .34x.88x.06
42	412036	Arm, Cntrl	132	142885	Nut, Castle 5/16-24 Pl
43	412037	Screw. Set 3/16-24 X 2.50	133	142886	Pin, Cotter 3/32x3/4
44	412038	Washer, Belleville	134	189386	Spring, Brake Arm Bias
45	412039	Washer,plastic, .32x.80x.21	140	170425	5/16 Sae, 5/32 Tube
46	142884	Washer .34x.88x.06	141	412058	Hose
47	142980	Spacer .32x.59x.50	142	170435	O-ring .103x.299 Id
48	142969	Spring, Helical Comp	143	412059	Tank. Expansion
49	150778	Nut, Hex 5/16-24 Nylon Lnsert	144	161175	Bolt, Self-tapping 10-32x1/2
61	412040	Shaft, Lnpnt	146	401264	Cap, Barbed Vent
62	142934	Ball Bear L Ng 15x35x 1 1	147	412060	Fastener, Ratchet
63	142928	Ring, Ret Wire .512 Id	150	170439	Fan, 7", 10 Blade
64	161125	Washer 1.23x1.56x.04	151	412061	Pulley, Flanged, 4.13"
65	142932	Seal, Lip 15x35x7	152	170441	Nut, Hex Lock, 1/2-20 (Nylon Insert)
66	142933	Ring, Ret 1.56 Int	153	170442	Washer, Od Slotted .53x1.63x.06
67	412041	Spring. Helical	200	412062	Kit, Filter
70	412042	Kit, Block, Cyl 8cc	201	412063	Kit, Center Section W/filter
74	412043	Brg, Thrust Ball 27x47x14	202	412064	Kit, Center Section
75	169898	Kit, Block, Cyl 10cc Rm	203	412065	Kit, Tank Expansion
79	150771	Brg, Thrust Ball 30x52x13	204	412066	Kit, Fan & Pulley
80	412044	Ring, Ret .50 Ext	205	412067	Kit, Seal
81	412045	Gear. 13t Pinion			
82	412046	Shaft, Motor			
83	412047	Washer .60x1.00x.03			
90	412048	Gear, 11t/48t			

NOTE: All component dimensions give in U.S. inches
1 inch = 25.4 mm

TRACTOR - - MODEL NUMBER 917.253220
BRIGGS & STRATTON ENGINE-MODEL NUMBER 31P977, TYPE NUMBER 1094-B1

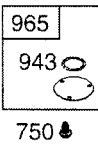
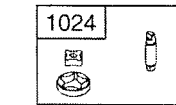


1058 OPERATOR'S MANUAL

1036 EMISSIONS LABEL

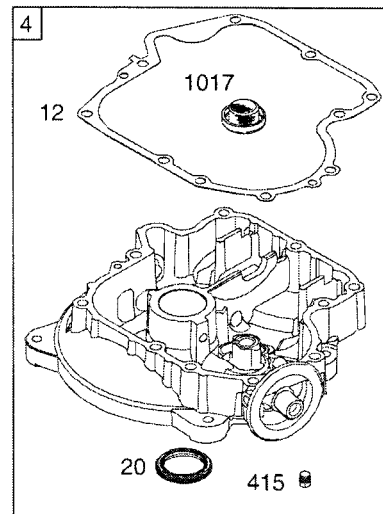
48 SHORT BLOCK

1329 REPLACEMENT ENGINE

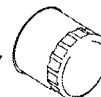


15

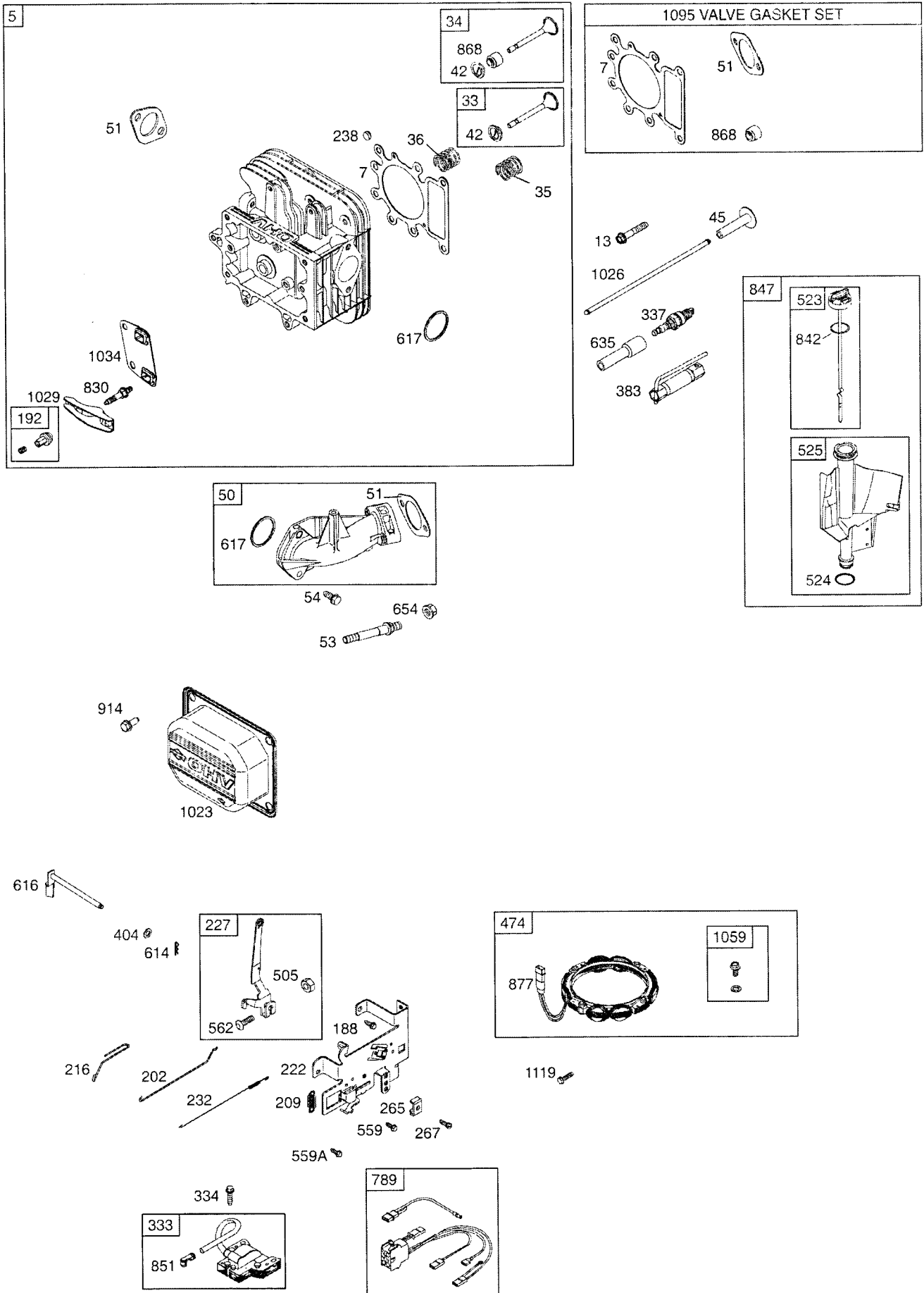
22



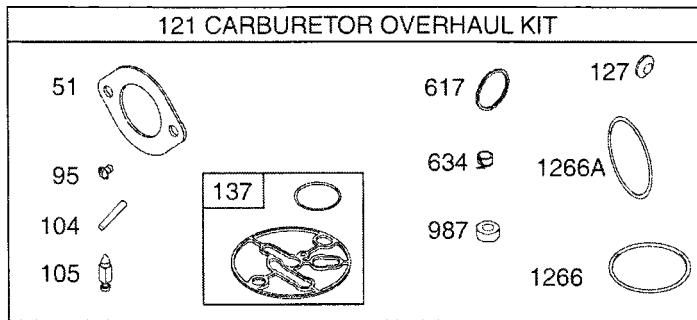
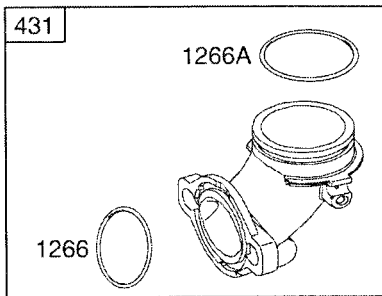
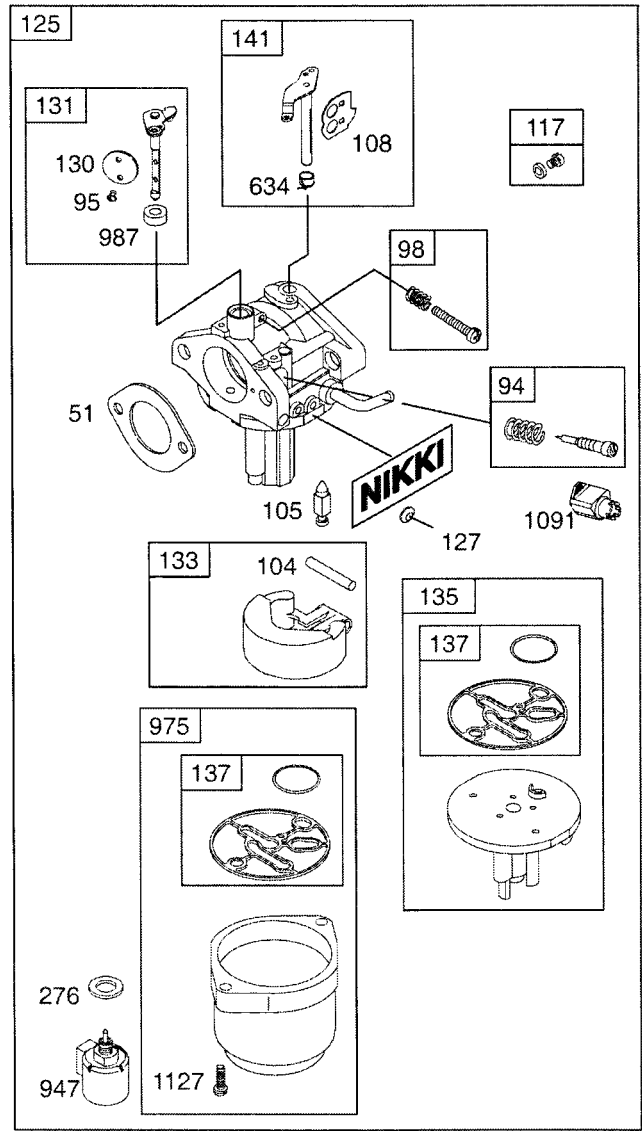
1027



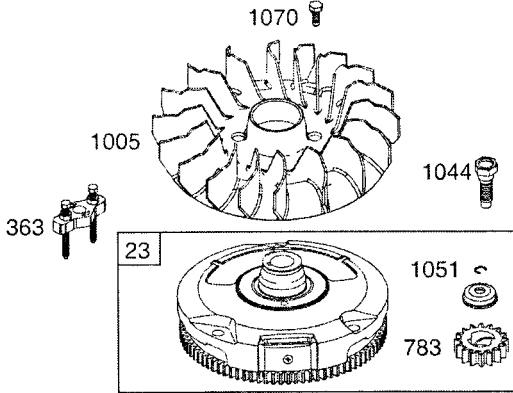
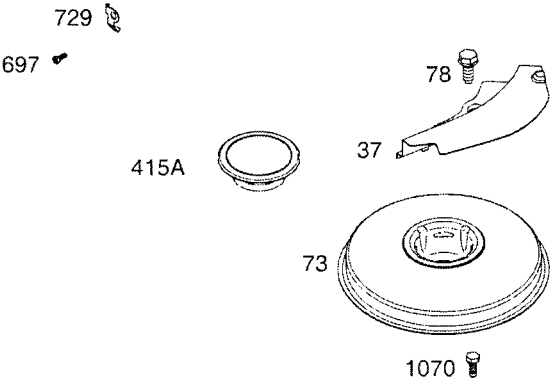
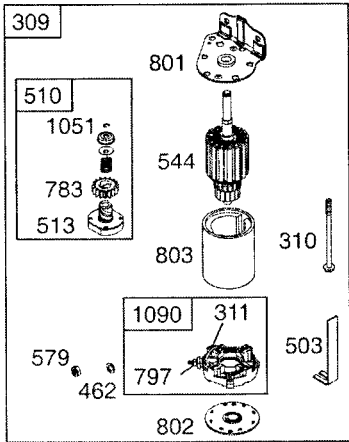
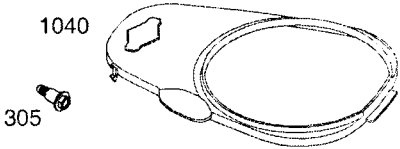
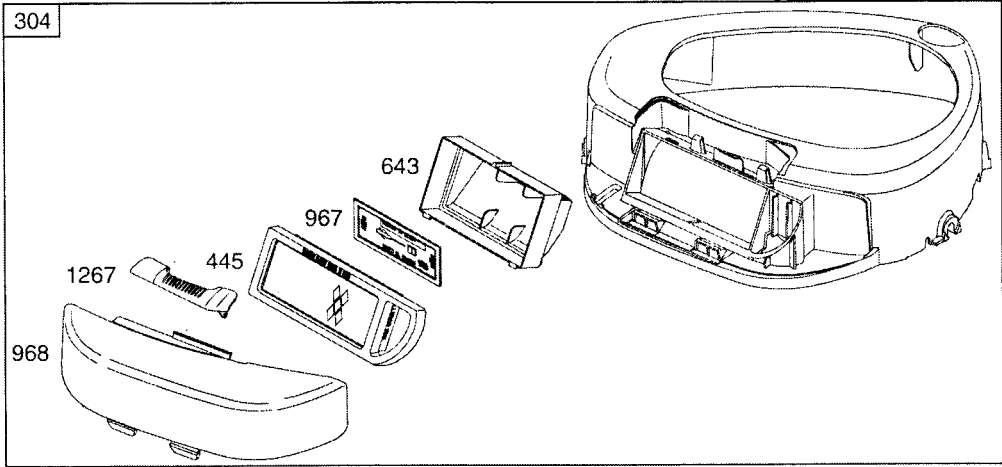
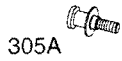
TRACTOR - - MODEL NUMBER 917.253220
BRIGGS & STRATTON ENGINE-MODEL NUMBER 31P977, TYPE NUMBER 1094-B1



TRACTOR - - MODEL NUMBER 917.253220
BRIGGS & STRATTON ENGINE-MODEL NUMBER 31P977, TYPE NUMBER 1094-B1



TRACTOR - - MODEL NUMBER 917.253220
BRIGGS & STRATTON ENGINE-MODEL NUMBER 31P977, TYPE NUMBER 1094-B1



TRACTOR - - MODEL NUMBER 917.253220

BRIGGS & STRATTON ENGINE-MODEL NUMBER 31P977, TYPE NUMBER 1094-B1

KEY NO.	PART NO.	DESCRIPTION	KEY NO.	PART NO.	DESCRIPTION
1	793987	Cylinder Assembly	232	691842	Spring-Governor
2	399265	Kit-Bushing/Seal (Magneto Side)	238	691843	Cap-Valve
3	391086s	• Seal-Oil (Magneto Side)	240	394358s	Filter-Fuel
4	697188	Sump-Engine	265	691024	Clamp-Casing
5	793991	Head-Cylinder	267	794904	Screw (Casing Clamp)
7	699168	•+ Gasket-Cylinder Head	276	695410	Ø Washer-Sealing
11	794683	Tube-Breather	304	699704	Housing-Blower
12	697110	• Gasket-Crankcase	305	697102	Screw (Blower Housing)
13	793988	Screw (Cylinder Head)	305A	793376	Screw (Blower Housing)
15	690946	Plug-Oil Drain	306	697107	Shield-Cylinder
16	697516	Crankshaft	307	691003	Screw (Cylinder Shield)
20	795387	• Seal-Oil (PTO Side)	309	693551	Motor-Starter
22	692125	Screw (Crankcase Cover/Sump)	310	690323	Bolt (Starter Motor)
23	693557	Flywheel	311	497608	Brush Set
24	222698s	Key-Flywheel	333	795315	Armature-Magneto
25	791937	Piston Assembly (Standard)	334	691061	Screw (Magneto Armature)
25	793019	Piston Assembly (.020" Oversize)	337	691043	Plug-Spark
26	791936	Ring Set (Standard)	358	697191	Gasket Set-Engine
26	792649	Ring Set (.020" Oversize)	363	19203	Flywheel Puller
27	698469	Lock-Piston Pin	383	89838s	Wrench-Spark Plug
28	697099	Pin-Piston	404	691691	Washer (Governor Crank)
29	794571	Rod-Connecting (Standard)	415	690283	Plug
32	791118	Screw (Connecting Rod)	415A	794129	Plug
33	791934	Valve-Exhaust	431	697122	Elbow-Intake
34	791935	Valve-Intake	445	697153	Filter-Air Cleaner Cartridge
35	691279	Spring-Valve (Intake)	462	691261	Washer (Starter Cable)
36	691279	Spring-Valve (Exhaust)	474	696459	Alternator
37	697352	Guard-Flywheel	503	691532	Strap-Starter
42	499586	Retainer-Valve	505	691251	Nut (Governor Control Lever)
43	691968	Slinger-Governor/Oil	510	693699	Drive-Starter
45	690564	Tappet-Valve	513	692024	Clutch-Drive
46	793880	Camshaft	523	699908	Dipstick
48		Short Block	524	691032	• Seal-Dipstick Tube
50	690193	Manifold-Intake	525	697184	Tube-Dipstick
51	692137	•Ø+ Gasket-Intake	544	692034	Starter-Armature
53	690227	Stud (Carburetor)	552	697144	Bushing-Governor Crank
54	691148	Screw (Intake Manifold)	559	697561	Screw (Remote Choke Stop)
73	794437	Screen-Rotating	559A	693675	Screw (Remote Choke Stop)
78	691003	Screw (Flywheel Guard)	562	691119	Bolt (Governor Control Lever)
94	695425	Kit-Idle Mixture	579	691029	Nut (Starter Cable)
95	690718	Ø Screw (Throttle Valve)	584	794682	Cover-Breather Passage
98	695408	Kit-Idle Speed	601	791850	Clamp-Hose
104	694918	Ø Pin-Float Hinge	614	691620	Pin-Cotter
105	696136	Ø Valve-Float Needle	616	692012	Crank-Governor
108	695419	Valve-Choke	617	692138	Ø • Seal-O Ring (Intake Manifold)
117	792296	Jet-Main (Standard)	634	698779	Ø Spring/Seal Assembly (Choke A Matic)
121	792369	Kit-Carburetor Overhaul			Boot-Spark Plug
125	792768	Carburetor	635	691909	Retainer-Air Filter
127	690727	Ø Plug-Welch	643	698401	Nut (Carburetor)
130	792747	Valve-Throttle	654	690958	Screw (Breather Passage Cover)
131	792765	Kit-Throttle Shaft	684	697157	• Seal-Governor Shaft
133	694914	Float-Carburetor	691	692407	Screw (Drive Cap)
135	698780	Tube-Fuel Transfer	697	690372	Pin-Locating
137	698781	Ø Gasket-Float Bowl	718	690959	Clip-Wire
141	792777	Kit-Choke Shaft	729	691224	Gear-Timing
146	691639	Key-Timing	741	697128	Screw (Oil Pump Cover)
187	791805	Line-Fuel	750	790832	Link-Counterweight
188	691693	Screw (Control Bracket)	757	793242	Counterweight
192	691986	Adjuster-Rocker Arm	758	697134	Pin-Counterweight
202	691841	Link-Mechanical Governor	759	697392	Gear-Pinion
209	692208	Spring-Governor	783	693713	Harness-Wiring
216	691840	Link-Choke	789	698329	Nut (Brush Retainer)
222	694042	Bracket-Control	797	693167	Cap-Drive
227	691374	Lever-Governor Control	801	691283	

TRACTOR - - MODEL NUMBER 917.253220
BRIGGS & STRATTON ENGINE-MODEL NUMBER 31P977, TYPE NUMBER 1094-B1

KEY NO.	PART NO.	DESCRIPTION
802	691286	Cap-End
803		Housing-Starter (For service order complete starter motor reference 309)
830	691095	Stud (Rocker Arm)
842	691031	• Seal-O Ring (Dipstick Tube)
847	790442	Dipstick/Tube Assembly
850	100100	Sealant-Liquid
851	692424	Terminal-Spark Plug
868	690968	•+ Seal-Valve
877	393456	Wire/Connector-Alternator
914	691108	Screw (Rocker Cover)
943	690589	• Seal-O Ring (Oil Pump Cover)
947	699915	Solenoid-Fuel
965	499613	Cover-Oil Pump
967	697015	Filter-Pre Cleaner
968	698403	Cover-Air Cleaner
975	699502	Bowl-Float
987	698777	∅ Seal-Throttle Shaft
1005	794438	Fan-Flywheel
1017	690770	Screen-Oil Pump
1023	791079	Cover-Rocker Arm
1024	794644	Pump-Oil
1026	692003	Rod-Push (Intake)
	692011	Rod-Push (Exhaust)
1027	696854	Filter-Oil
1029	691751	Arm-Rocker
1034	690822	Guide-Push Rod
1036	791932	Label-Emissions
1040	699852	Plate-Trim
1044	698139	Screw (Flywheel)
1051	691265	Ring-Retaining
1058	275935	Owner's Manual
1059	698516	Kit-Screw/Washer
1070	690363	Screw (Flywheel Fan)
1090	691293	Retainer-Brush
1091	691333	Cap-Limiter
1095	690190	Gasket Set-Valve
1119	691183	Screw (Alternator)
1127	695407	Screw (Float Bowl)
1263	697124	Reed-Breather
1264	697104	Screw (Breather Reed)
1266	691917	•∅ Seal-O Ring (Intake Elbow)
1266A	697123	∅ Seal-O Ring (Intake Elbow)
1267	697419	Latch-Blower Housing
1270	793243	Plug-AVS Counterweight
1329		Replacement Engine

•Included in Engine Gasket Set, Key. No. 358

∅Included in Carburetor Overhaul Kit, Key. No. 121

+Included in Valve Gasket Set, Key. No. 1095

NOTE: All component dimensions give in U.S. inches
1 inch = 25.4 mm

SERVICE NOTES

SERVICE NOTES

LIMITED WARRANTY ON CRAFTSMAN RIDING EQUIPMENT

For two (2) years from the date of purchase, if this Craftsman Riding Equipment is maintained, lubricated and tuned up according to the instructions in the owner's manual, Sears will repair or replace free of charge any parts that are found to be defective in material or workmanship according to the guidelines of coverage listed below. Sears will also provide free labor for these applicable warranted parts for the two full years. During the first 30 days of purchase, there will be no charges to service the product at your home for issues covered by this warranty. (See exclusions below). For your convenience, IN HOME warranty service will still be available after the first 30 days of purchase, but a trip charge will apply. This charge will be waived if the Craftsman product is dropped off at an authorized Sears location. For the nearest authorized Sears location, please call 1-800-4-MY-HOME®. This warranty applies only while this product is within the United States.

This Warranty does not cover:

- Expendable items which become worn during normal use, including but not limited to blades, spark plugs, air cleaners, belts, and oil filters.
- Standard Maintenance Servicing, oil changes, or tune-ups
- Tire replacement or repair caused by punctures from outside objects, such as nails, thorns, stumps, or glass.
- Repairs necessary because of operator abuse, including but not limited to, damage caused by towing objects beyond the capability of the riding equipment, impacting objects that bend the frame or crankshaft, or over-speeding the engine.
- Repairs necessary because of operator negligence, including but not limited to, electrical and mechanical damage caused by improper storage, failure to use the proper grade and amount of engine oil, failure to keep the deck clear of flammable debris, or failure to maintain the equipment according to the instructions contained in the owner's manual.
- Engine (fuel system) cleaning or repairs caused by fuel determined to be contaminated or oxidized (stale). In general, fuel should be used within 30 days of its purchase date.
- Normal deterioration and wear of the exterior finishes, or product label replacement.
- Riding equipment used for commercial or rental purposes.

LIMITED WARRANTY ON BATTERY

For ninety (90) days from date of purchase, if any battery included with this riding equipment proves defective in material or workmanship and our testing determines the battery will not hold a charge, Sears will replace the battery at no charge. During the first 30 days of purchase, there will be no charges to replace the battery at your HOME. After the first 30 days, for your convenience, IN-HOME warranty service will still be available but a trip charge will apply. This charge will be waived if the Craftsman product is dropped off at an authorized Sears location. For the nearest authorized Sears location, please call 1-800-4-MY-HOME®.

This battery warranty applies only while this product is within the United States.

This warranty gives you specific legal rights, and you may also have other rights, which vary, from state to state.

Sears, Roebuck and Co., Dept. 817WA, Hoffman Estates, IL 60179

CRAFTSMAN®