

REPAIR PARTS MANUAL
MODEL NO. 253250
Lawn Tractor

CRAFTSMAN[®]

HOW TO USE THIS MANUAL

This manual is designed to provide the customer with a means to identify the parts on his/her tractor when ordering repair parts. The illustrations may or may not represent the actual assemblies; therefore, it is not recommended to use this manual as a guide to assemble or disassemble the tractor. Some hardware and parts are drawn larger in order to more readily identify them.

Each tractor has its own model number.

The model number for your tractor can be found on the fender under the seat.

When ordering parts, always give the following information:

- Product - Lawn Tractor
- MODEL NUMBER - **253250**
- Part Number
- Part Description

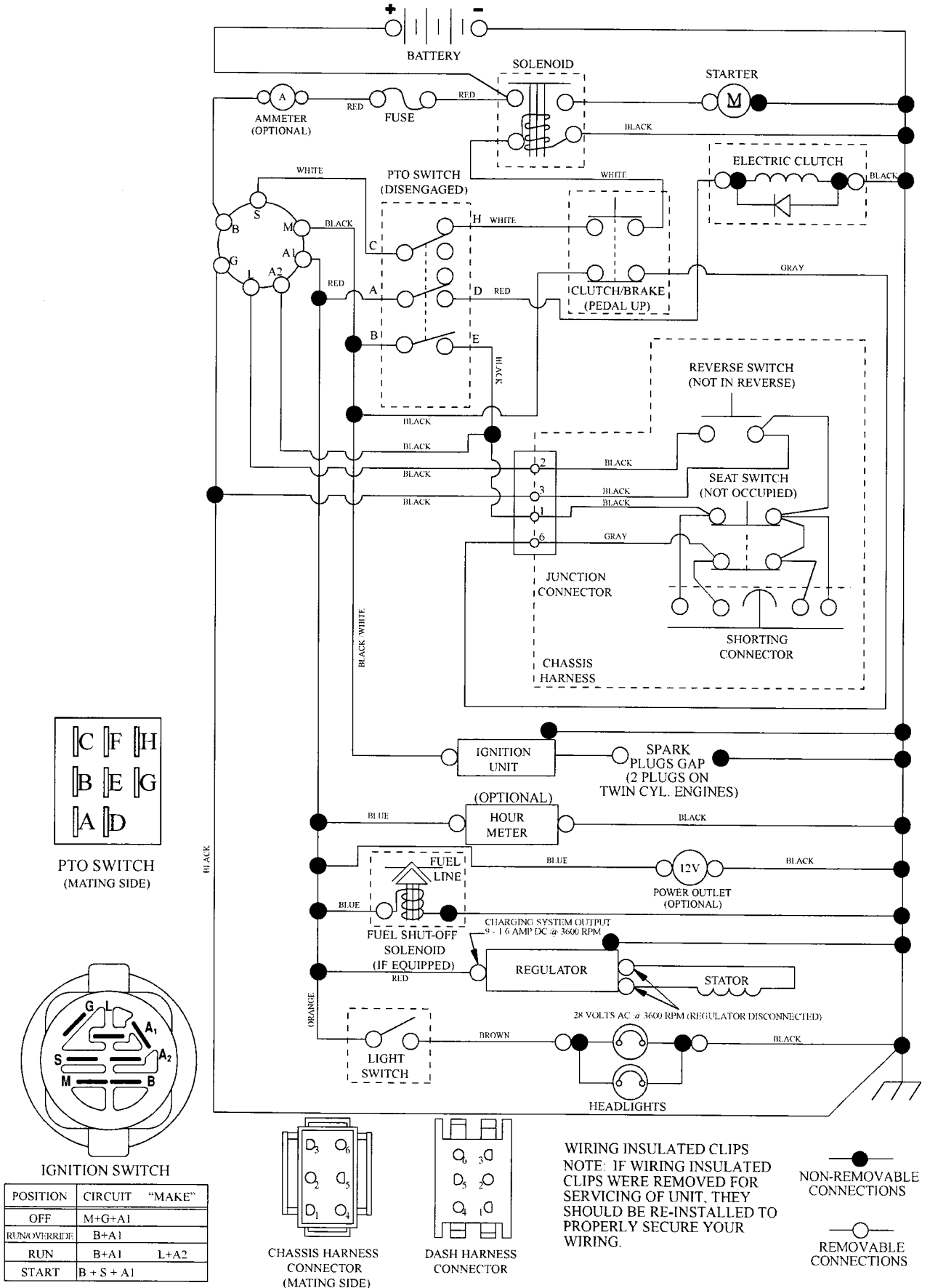
TABLE OF CONTENTS

SCHEMATIC	3
ELECTRICAL.....	4-5
CHASSIS	6-7
DRIVE.....	8-9
ENGINE.....	10-11
STEERING	12
SEAT	13
MOWER DECK	14-15
DECALS.....	16
MOWER LIFT.....	17
TRANSAXLE BREAKDOWN	18-19
ENGINE BREAKDOWN.....	20-24
WARRANTY.....	BACK COVER

TRACTOR - - MODEL NUMBER 917.253250

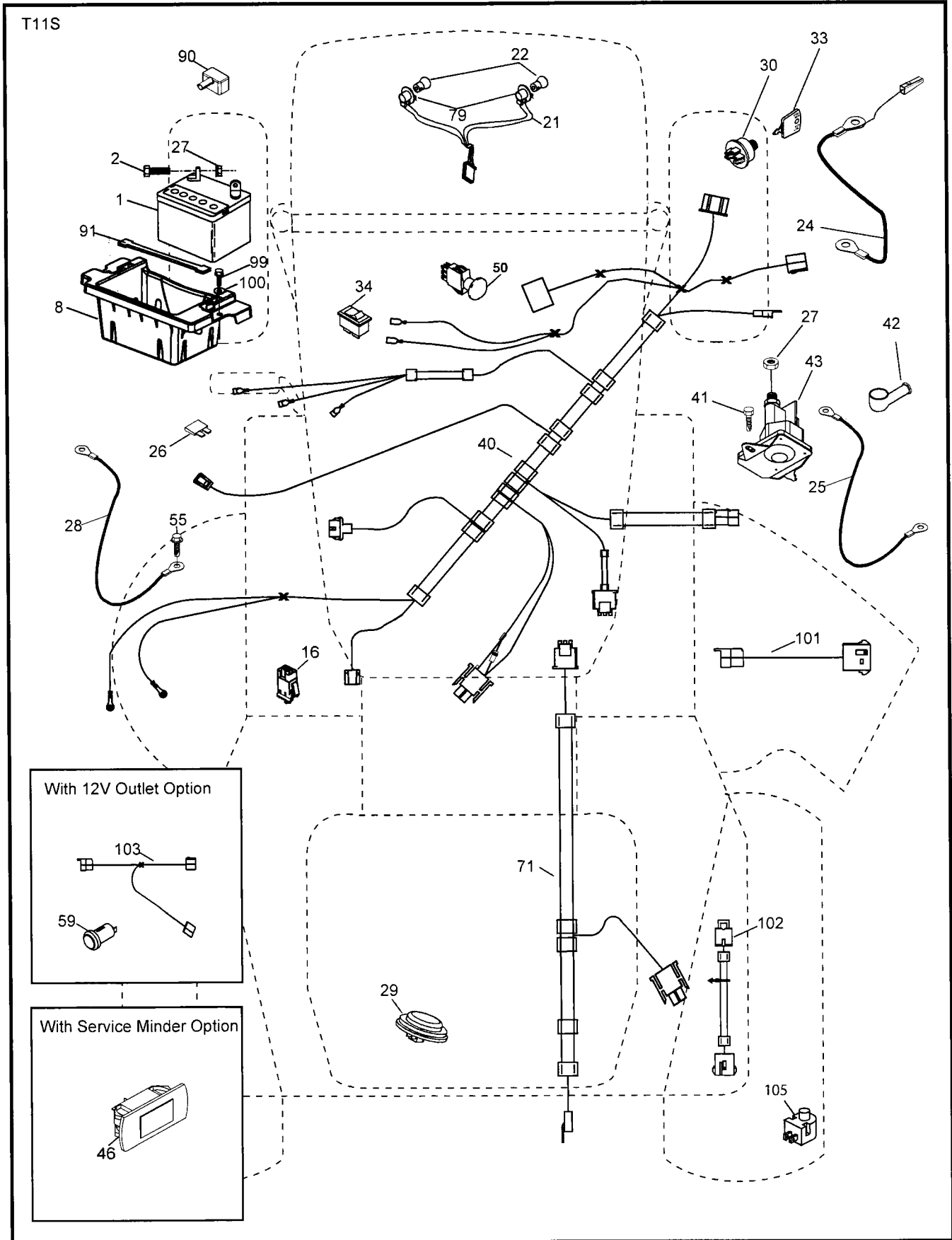
SCHEMATIC

SCH12



TRACTOR -- MODEL NUMBER 917.253250

ELECTRICAL



ELECTRICAL

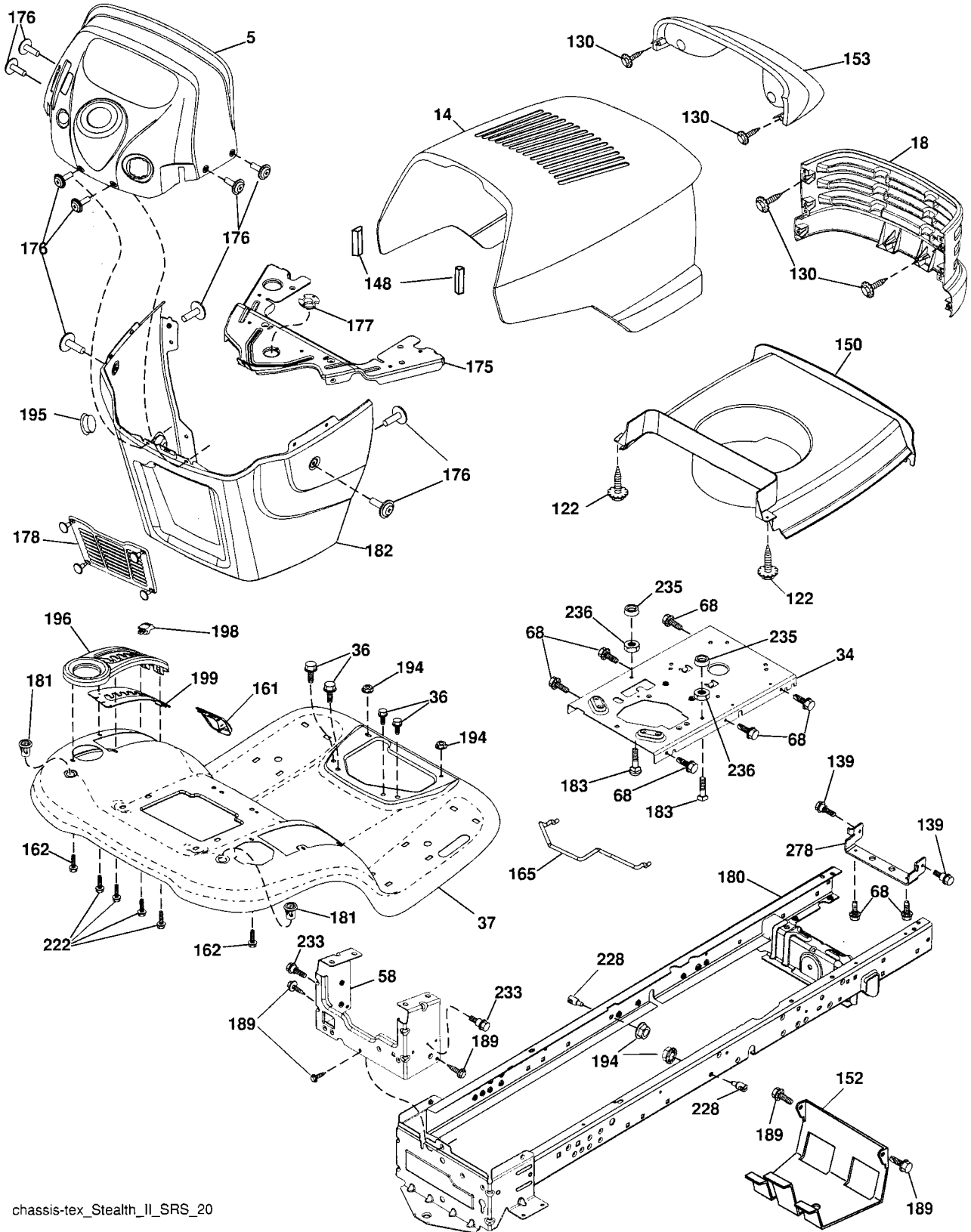
TRACTOR - - MODEL NUMBER 917.253250

KEY NO.	PART NO.	DESCRIPTION
1	144927	Battery
2	74760412	Bolt Hex Head 1/4-20 x 3/4
8	186491	Box Battery
16	176138	Switch Interlock Push-In
21	175688	Harness Socket Light w/4152J
22	4152J	Bulb Light
24	400253	Cable Battery
25	412895	Cable Starter
26	175158	Fuse
27	73510400	Nut Keps Hex 1/4-20 unc
28	145491	Cable, Ground
29	401545	Switch, Seat
30	193350	Switch, Ign
33	411934	Key/Chain
34	110712X	Switch Light/Reset
40	401104	Harness Ign. Dash
41	17720408	Screw Thd Cut 1/4-20 x 1/2
42	131563	Cover, Terminal
43	192507	Solenoid
46	413931	Gauge Hourmeter
50	174652	Switch, PTO
55	17060512	Screw 5/16-18 x 3/4
71	194276	Harness Ignition Chassis
79	175242	Bulbholder Asm. Incandescent
90	400724	Cover Terminal
91	190270	Strap Battery Mount Front
99	17670412	Screw Hexwsh Thdrol 1/4-20 x 3/4
100	19091416	Washer 9/32 x 7/8 x 16 Ga.
101	198317	Pigtail Matlink
102	404454	Harness Pigtail
105	407568	Switch Reverse TT Pedal Control

NOTE: All component dimensions given in U.S. inches
1 inch = 25.4 mm

TRACTOR - - MODEL NUMBER 917.253250

CHASSIS ASSEMBLY



chassis-tex_Stealth_II_SRS_20

CHASSIS ASSEMBLY

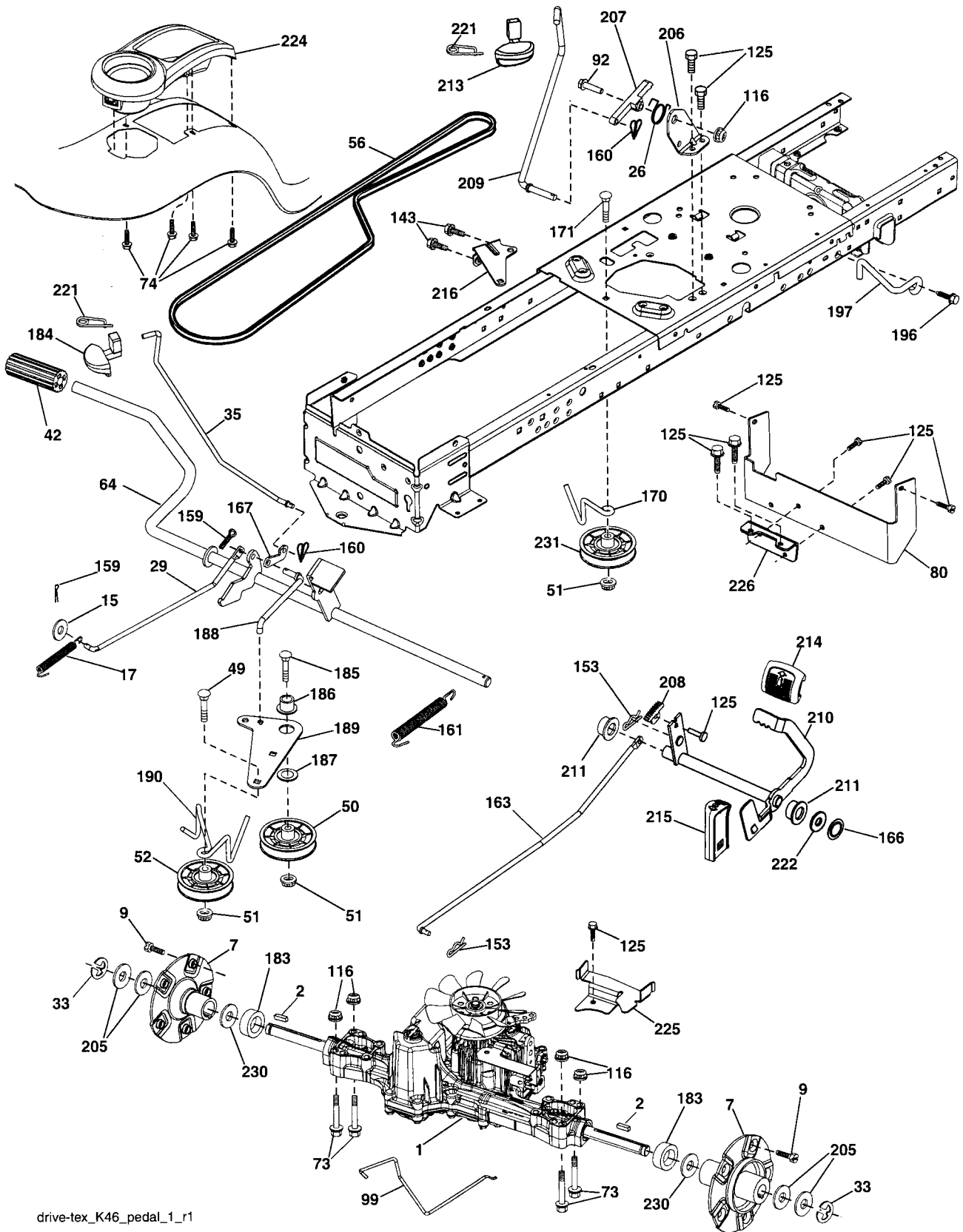
TRACTOR - - MODEL NUMBER 917.253250

KEY NO.	PART NO.	DESCRIPTION
5	195102X418	Dash
14	175260X615	Hood
18	174515X418	Grille, Assembly
34	196125	Plate Engine
36	17060512	Screw 5/16-18 x 3/4
37	400009X615	Fender
58	412281	Drawbar Upper
68	17490508	Screw Thdrol 5/16-18 x 1/2
122	192512	Screw WSHD HEX 10-32 x 5/8
130	416358	Screw #10 x 0.750
139	171873	Bolt Shoulder 5/16-18
148	164655	Bumper Extrusion
150	175351	Duct Heat Hood
152	199535	Shield Browning/Debris
153	161840	Lens Bar
161	193097X418	Console Fuel Window
162	142432	Screw Hex Wsh Hi-Lo 1/4 x 1/2
165	196826	Bracket Support Tank
175	193236	Crossmember
176	400776	Screw 10-24 x 5/8
177	195227	Bushing Steering
178	195651	Cargo Asm Net
180	415063	Chassis
181	193102X428	Bushing Mtg. Fender Crgo.
182	192551	Dash Lower
183	74780520	Bolt Fin Hex 5/16-18 unc x 1-1/4
189	17000512	Screw 5/16-18 x 3/4
194	73900500	Nut Lock Hex Flange 5/16-18
195	401556X428	Plug 12V Adapter Caplug
196	193098X418	Console Asm. Deck Lift
198	197300X505	Indicator Deck Lift
199	196377	Plate Deck Lift
228	195161	Stud Fastener
222	137729	Screw Thd Roll 1/4-20 x 5/8
233	196539	Bolt Shoulder
235	406129	Spacer Fender
236	73930500	Nut 5/16-18 unc
278	196394	X-Piece Hood Stop

NOTE: All component dimensions given in U.S. inches
1 inch = 25.4 mm

TRACTOR - - MODEL NUMBER 917.253250

GROUND DRIVE



drive-tex_K46_pedal_1_r1

TRACTOR - - MODEL NUMBER 917.253250

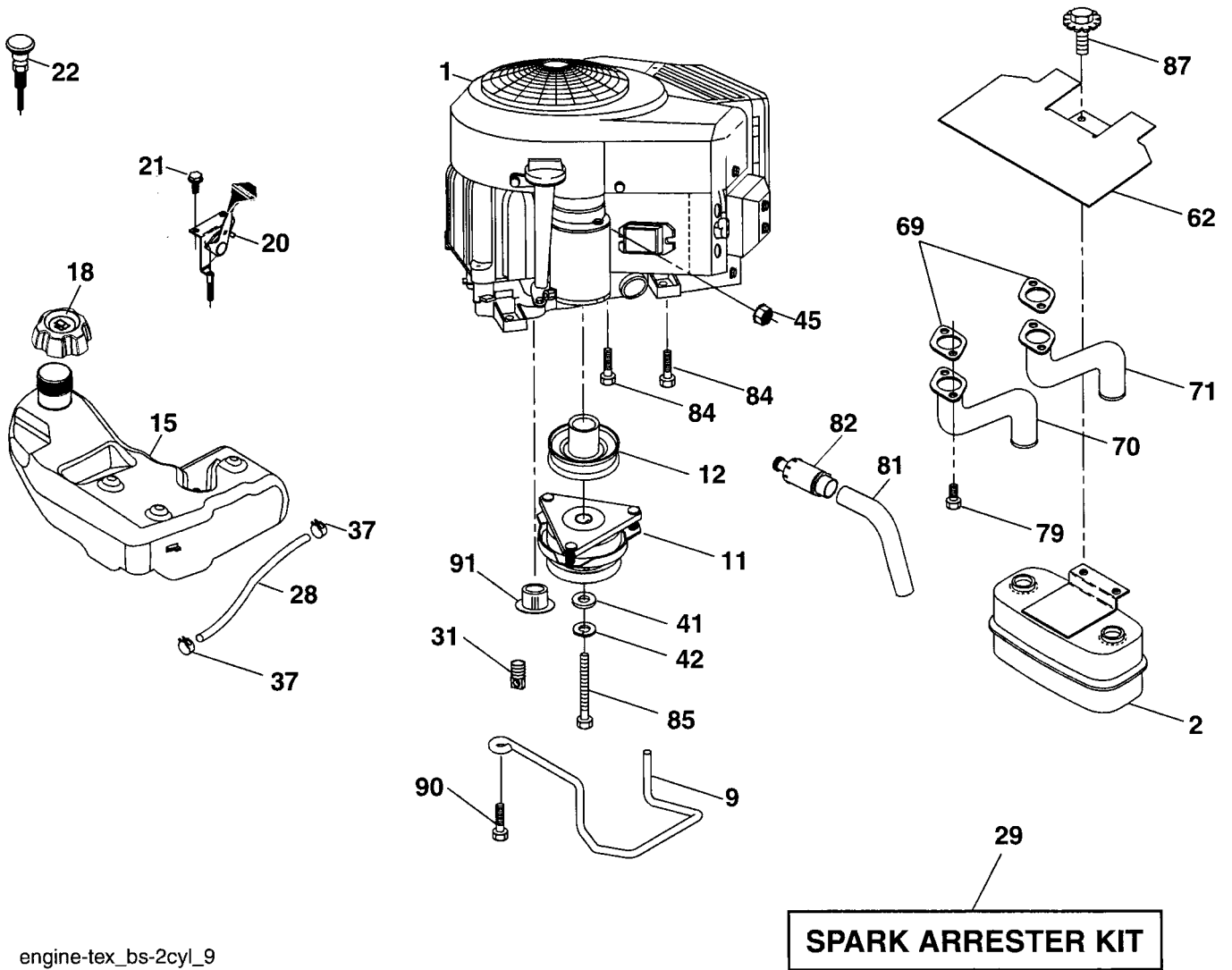
GROUND DRIVE

KEY NO.	PART NO.	DESCRIPTION	KEY NO.	PART NO.	DESCRIPTION
1	414006	Transaxle, TUFFTORQ K46 BN	183	400424	Spacer Split
2	186211	Key SQUARE	184	195361X505	Handle Parking Brake
7	199844	Hub Asm Wheel	185	72110620	Bolt Rdhd Sqnk 3/8-16 x 2-1/2
9	140080	Bolt Hub Wheel	186	194321	Spacer Retainer
15	19131316	Washer 13/32 x 13/16 x 16 Ga.	187	19133210	Washer
17	413678	Spring, Brake	188	194323	Link Clutch Ground Drive
26	199679	Spring Return Cruise	189	194317	Bellcrank Ground Drive
29	403806	Rod, Brake	190	194318	Keeper Bellcrank Ground Drive
33	12000001	Ring E	196	17000616	Screw 3/8-16 x 1
35	197275	Rod, Brake, Park	197	199769	Link Clutch Anti-Rotation
42	8883R	Cover, Foot Pedal	205	121748X	Washer
49	72110614	Bolt	206	197867	Bracket Mount Latch Cruise
50	194327	Pulley Idler Flat	207	197868	Latch Control Cruise
51	73900600	Lock Nut 3/8-16	208	197869	Gear Sector Control Cruise
52	194326	Idler V-Groove 910" Offset	209	199466	Rod Control Cruise
56	130969	V-Belt, Drive	210	197860	Rocker Asm. Pedal Control
64	197865	Shaft Asm. Pedal Brake Control	211	120183X	Bearing Nylon
73	74490544	Bolt 5/16-18 Gr. 5	213	195352X428	Knob Control Cruise
74	142432	Screw 1/4 x 1/2	214	197302X428	Pedal Forward
80	412170	Strap Torque	215	197301X428	Pedal Reverse
92	74760520	Bolt Fin Hex 5/16-18 unc x 1.25	216	196131	Bracket Pulley Idler
99	415742	Rod Bypass	221	403187	Retainer Spring Clip Handle
116	73900500	Nut Lock Hex Flange 5/16-18	222	79212010	Washer 21/32 x 1-1/4 x 10 Ga.
125	17000512	Screw 5/16-18 x 3/4	224	193099X428	Console Toolbox
143	17490508	Screw 5/16-18 x 1/2	225	403319	Keeper Belt Trans.
153	STD624003	Retainer Spring	226	401564	Bracket Mount Torque
159	76020412	Pin Cotter 1/8 x 3/4	230	188967	Washer Harden
160	169484	Retainer Clip	231	407287	Idler V-Groove
161	105709X	Spring, Return, Clutch			
163	401034	Rod Pedal Control			
166	197290	Nut Push .625			
167	405257	Latch Brake Parking			
170	413430	Keeper Belt Centerspan			
171	72110622	Bolt RDHD 3/8-16 unc x 2-3/4 Gr. 5			

NOTE: All component dimensions given in U.S. inches
1 inch = 25.4 mm

TRACTOR - - MODEL NUMBER 917.253250

ENGINE



engine-tex_bs-2cyl_9

TRACTOR - - MODEL NUMBER 917.253250

ENGINE

KEY NO.	PART NO.	DESCRIPTION
1	-----	Engine Briggs Model No. 445677-1145-B1 (See Engine Breakdown)
2	149723	Muffler
9	194320	Keeper Asm. Belt Engine
11	179335	Clutch Electric
12	194343	Pulley Engine
15	193499	Tank Fuel 4.0
18	194267	Cap Asm
20	175437X428	Control Throttle
21	416358	Screw #10 x 0.750 BOS Thread
22	187767X428	Control Choke
28	8543R	Fuel Line
29	137180	Spark Arrester Kit
31	145006	Clip Push-In Hinged
37	123487X	Clamp Hose
41	126197X	Washer 1-1/2 OD x 15/32 ID x .250
42	STD551143	Washer Lock 7/16
45	73510400	Nut Keps 1/4-20 unc
62	146629	Shield Heat Muffler
69	165391	Gasket
70	159955	Tube Exhaust LH
71	160589	Tube Exhaust RH
79	183906	Screw 5/16-18 x 1
81	148456	Tube Drain Oil Easy
82	181654	Plug Drain Oil
84	17060620	Screw 3/8-16 x 1-1/4
85	179953	Bolt Hex 7/16-20 x 3.75 Gr. 5
87	198239	Bolt 5/16-18 unc x 1 w/Sems
90	17000616	Screw 3/8-16 x 1
91	187495	Bushing

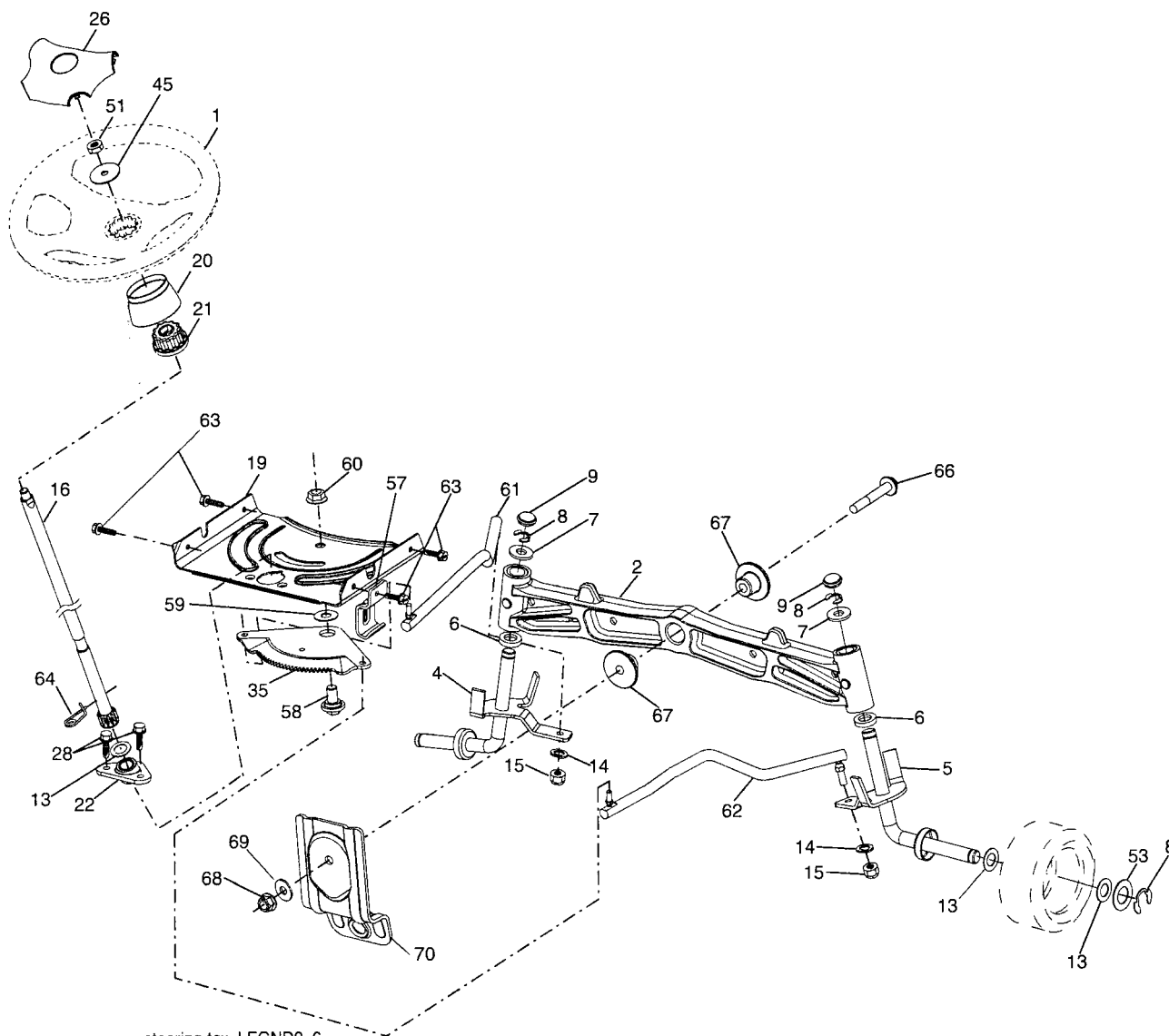
NOTE: All component dimensions given in U.S. inches
1 inch = 25.4 mm

Engine Power Rating Information

The gross power rating for individual gas engine models is labeled in accordance with SAE (Society of Automotive Engineers) code J11940 (Small Engine Power & Torque Rating Procedure), and rating performance has been obtained and corrected in accordance with SAE J1995 (Revision 2002-5). Actual gross engine power will be lower and is affected by, among other things, ambient operating conditions and engine-to-engine variability. Given both the wide array of products on which engines are placed and the variety of environmental issues applicable to operating the equipment, the gas engine will not develop the rated gross power when used in a given piece of power equipment (actual "on-site" or net horsepower). This difference is due to a variety of factors including, but not limited to, accessories (air cleaner, exhaust, charging, cooling, carburetor, fuel pump, etc.), application limitations, ambient operating conditions (temperature, humidity, altitude), and engine-to-engine variability. Due to manufacturing and capacity limitations, Briggs & Stratton may substitute an engine of higher rated power for this Series engine.

TRACTOR - - MODEL NUMBER 917.253250

STEERING ASSEMBLY



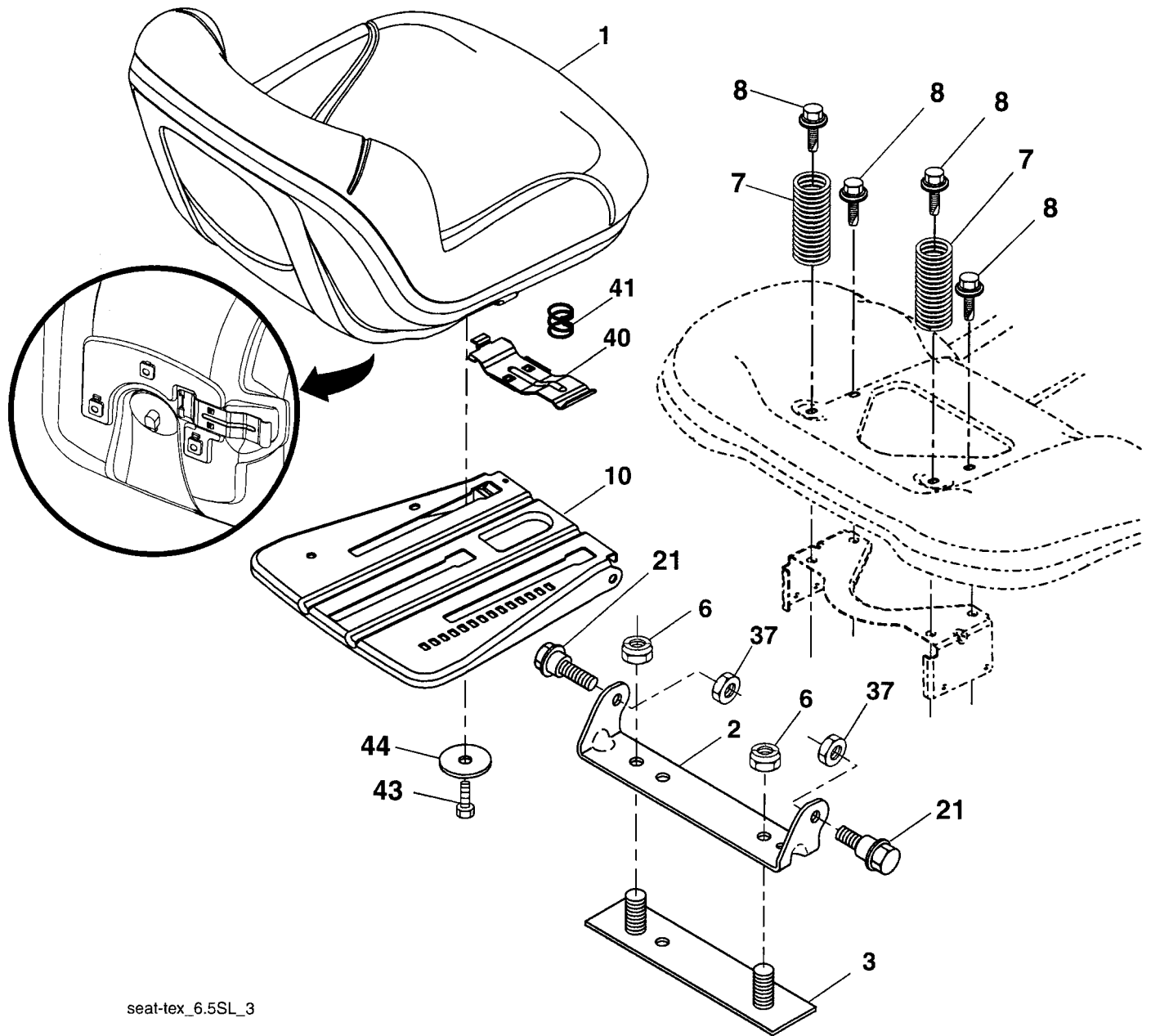
steering-tex_LEGND2_6

KEY NO.	PART NO.	DESCRIPTION	KEY NO.	PART NO.	DESCRIPTION
1	186093X418	Wheel, Steering	51	73940800	Nut Hex Jam Toplock 1/2-20 unf
2	195968	Axle Asm., Front	53	188967	Washer Hardened .793 x 1.637 x .060
4	403089	Spindle Asm., LH	57	197246	Bracket Upstop
5	403090	Spindle Asm., RH	58	194747	Bolt Shoulder Sector Pivot CFM
6	6266H	Bearing, Race Thrust Harden	59	194748	Washer Thrust Sector Steering
7	121748X	Washer 25/32 x 1-5/8 x 16 Ga.	60	73971000	Nut Flange Lock 5/8-11
8	12000029	Ring, Clip #T5304-75	61	194740	Draglink, LH
9	184946X505	Cap, Spindle	62	194741	Draglink, RH
13	121749X	Washer 25/32 x 1-1/4 x 16 Ga.	63	17000512	Screw 5/16-18 x 3/4
14	STD551137	Washer, Lock Hvy Hlcl Spr 3/8	64	199849	Retainer Clip Spring Steering
15	73540600	Nut, Crown Lock 3/8-24 unf	66	71020748	Bolt Hex Fghd 7/16-14 x 3 Serr
16	194746	Shaft Steering	67	194737	Bushing PM Front Axle
19	194729	Plate Steering	68	73900700	Nut Lock Flange 7/16-14 Gr. 5
20	195626X418	Boot, Steering	69	199162	Washer 1.5 x .505 x .118
21	186737	Adapter, Wheel Steering	70	196197	Bracket Deck Susp. Front
22	194845	Bushing, Strg. Blk			
26	186095X418	Insert, Wheel Steering			
28	17000612	Screw 3/8-16 x 3/4			
35	194732	Gear, Sector Plate			
45	19183812	Washer 9/16 ID x 2-3/8 OD 12 GZIN			

NOTE: All component dimensions give in U.S. inches
1 inch = 25.4 mm

TRACTOR - - MODEL NUMBER 917.253250

SEAT ASSEMBLY



seat-tex_6.5SL_3

KEY NO.	PART NO.	DESCRIPTION
1	418490	Seat
2	180166	Bracket Pivot Fender
3	140675	Strap, Asm Fender
6	STD541437	Nut, Lock w/Ins. 3/8-16 unc
7	124181X	Spring, Seat Cprsn
8	171877	Bolt 5/16-18 unc x 3/4 w/Sems
10	196977	Pan, Seat
21	171852	Bolt, Shoulder 5/16-18
37	STD541431	Nut, Lock 5/16-18 unc

KEY NO.	PART NO.	DESCRIPTION
40	197661	Handle Slide Seat
41	198200	Spring Latch Seat
43	74760612	Bolt 3/8-16 unc x 3/4
44	19133812	Washer 13/32 x 2-3/8 x 12 Ga.

NOTE: All component dimensions give in U.S. inches
1 inch = 25.4 mm

TRACTOR - - MODEL NUMBER 917.253250

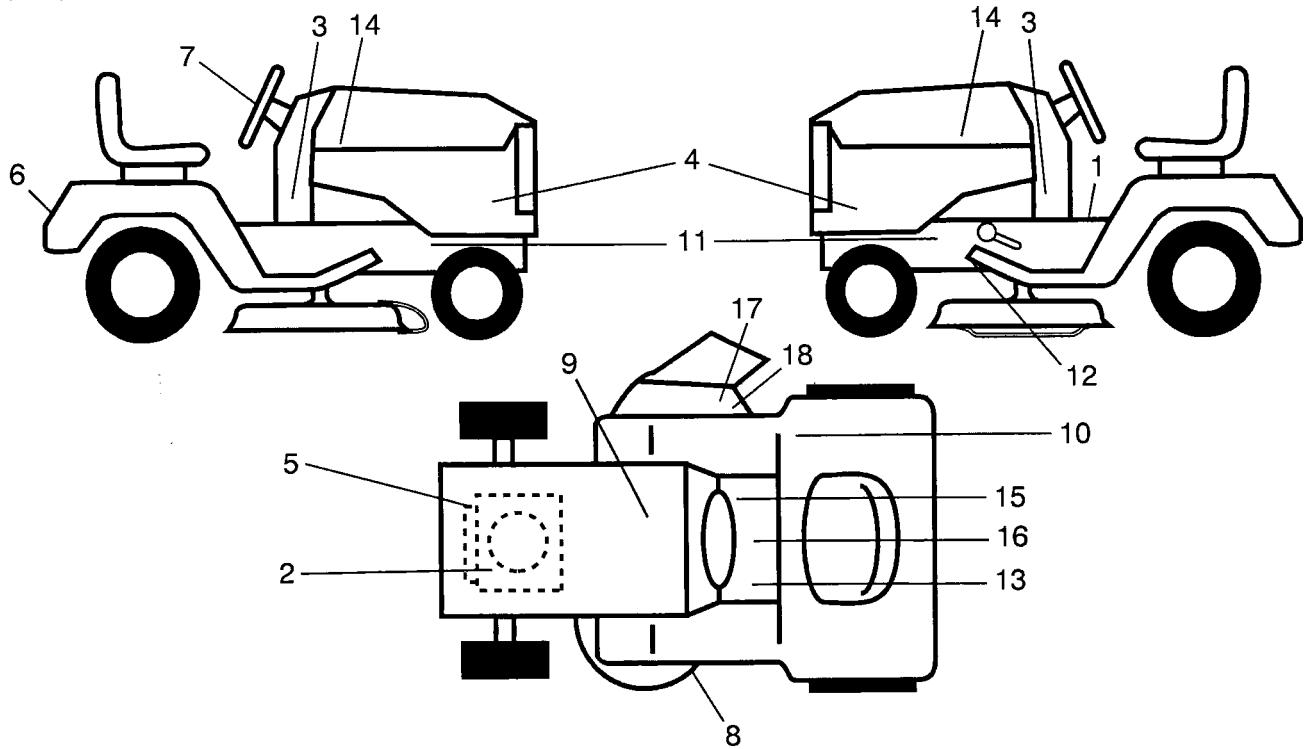
MOWER DECK

KEY NO.	PART NO.	DESCRIPTION	KEY NO.	PART NO.	DESCRIPTION
1	197216	Deck Weldment Mower	52	193197	Pulley Idler Primary
6	197248	Cover Mandrel LH	50	17490636	Screw 3/8-16 x 2-1/4 unc
7	199102	Cover Mandrel RH	54	72110612	Bolt Carr. 3/8-16 x 1-1/2 Gr. 5
8	174365	Bolt 7/16 Asm. Blade	97	178515	Washer Hardened
11	180054	Blade High Lift	98	196105	Spring Drive
12	404851	Rod Anti-Sway	113	72110508	Bolt Rdhd Sqnk 5/16-18 x 3/4
13	187291	Shaft Asm. w/Lower Bearing	114	197451	Rod Tension Relief
14	187281	Housing, Mandrel	116	193406	Bolt, Shoulder
15	110485X	Bearing, Ball, Mandrel	117	174873	Gauge Wheel
16	19131312	Washer 13/32 x 13/16 x 12 Ga.	120	19132012	Washer 13/32 x 1-1/4 x 12 Ga.
17	72110505	Bolt Carr 5/16 x 5/8	122	187557	Bushing Tension Relief
18	72140505	Bolt RdHd 5/16-18 unc x 5/8	185	73900700	Nut Lock Flange 7/16-14 Gr. 5
19	194208	Pin Cotter 5/16 Bow Tie Lock	187	195161	Stud Fastr. w/"D" Anti-Rotation
20	174378	Baffle Vortex	188	73900500	Nut Lock Hex Flange
21	73680500	Nut, Crownlock 5/16-18 unc	189	195185	Arm Susp. Mower Rear
22	174493	Stripper Mandrel Deck	190	196539	Bolt Shoulder
24	105304X	Cap Sleeve	194	72140716	Bolt Carr Sqnk 3/8-16 x 2-1/4
25	178102	Spring, Torsion	241	152927	Screw TT #10-32 5 3/8 Flange
26	110452X	Nut, Push	242	415598	Port, Washout
27	180655X428	Deflector Shield	--	187292	Mandrel Assembly (Includes housing, shaft assembly, and bearing only - pulley/nut/washer and blade bolt/washers not included)
29	131491	Rod, Hinge	--	418069	Replacement Mower, Complete
30	173984	Screw, Thdroll Washer Head			
31	187690	Washer, Spacer Mower Vented			
32	153532	Pulley, Mandrel			
33	400234	Nut, Fig. Top Lock			
39	197380	Pulley, Idler, Stationary			
43	196065	Arm, Idler			
46	137729	Screw, Thdroll. 1/4-20 x 5/8			
47	197242	Belt Drive Deck			
48	197379	Pulley Idler			
49	73900600	Nut, Lock Fig. 3/8-16 unc			

NOTE: All component dimensions give in U.S. inches
1 inch = 25.4 mm

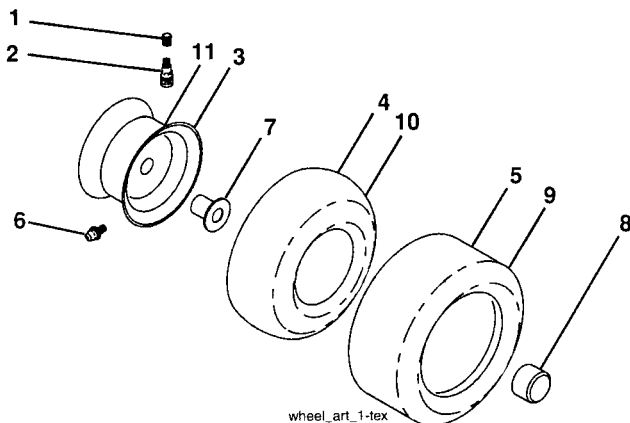
TRACTOR - - MODEL NUMBER 917.253250

DECALS



KEY NO.	PART NO.	DESCRIPTION	KEY NO.	PART NO.	DESCRIPTION
1	400389	Decal, Oper./Warng	15	140837	Decal, Saddle Brake Parking
2	196841	Decal, Warning Eng. Syms	16	178302	Decal, Oper. Cruise Sym
3	404606	Decal, LWR Dash	17	182166	Decal, Cutfingering CE 02
4	413053	Decal, Panel Side Hood	18	196357	Decal, DeflectWarningCutfingeringSym
5	420133	Decal, Engine	--	166960	Decal, Bypass
6	411697	Decal, Fender	--	162598	Decal, Drawbar Load Limit
7	164065	Decal, Steering	--	193101X418	Pad, Footrest, LH
8	198785	Decal, Mower Sch.	--	193279X418	Pad, Footrest, RH
9	145005	Decal, Battery Dnge/Poi	--	420073	Manual, Operator's (Euro)
10	180433	Decal, Fender 105 DB/CE	--	420074	Manual, Operator's (Scan)
11	159736	Decal, Hot Muffler	--	420075	Manual, Operator's (E-Bloc)
12	199135	Decal, Mower V-Belt Schematic	--	420076	Manual, Operator's (Baltic)
13	159737	Decal, Brake/Clutch Sym	--	420077	Manual, Parts
14	417899	Decal, Hood			

WHEELS & TIRES

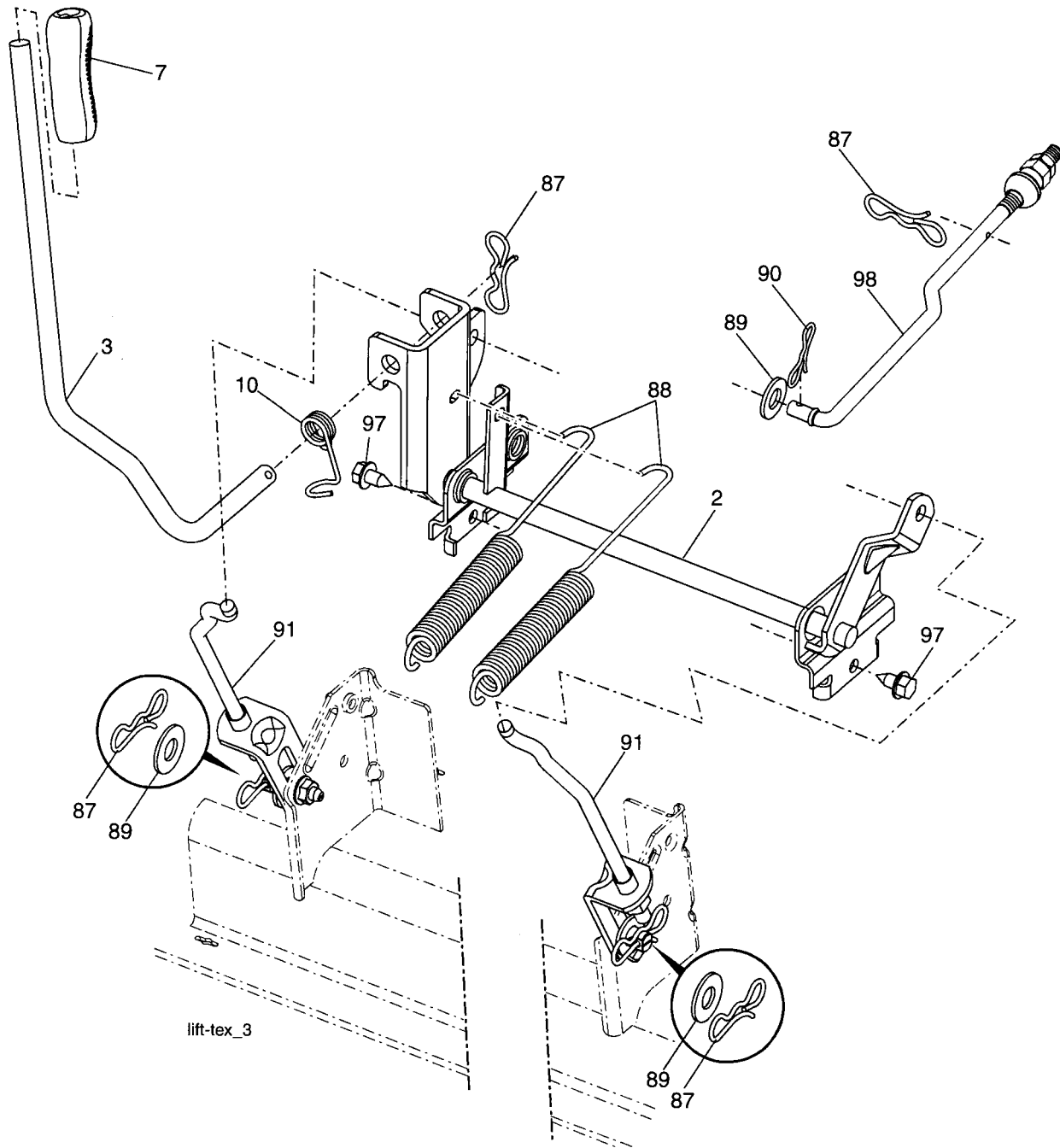


KEY NO.	PART NO.	DESCRIPTION
1	59192	Cap, Valve, Tire
2	65139	Stem, Valve
3	106228X645	Rim Assembly, Front
4	8134H	Tube, Front (Service Item Only)
5	106230X	Tire, Front
6	278H	Fitting, Grease (Front Wheel Only)
7	9040H	Bearing, Flange (Front Wheel Only)
8	104757X645	Cap, Axle (Front Wheel Only)
9	184708	Tire, Rear
10	7154J	Tube, Rear (Service Item Only)
11	400404X645	Rim Assembly, Rear
--	144334	Sealant, Tire (10 oz. Tube)

NOTE: All component dimensions give in U.S. inches
1 inch = 25.4 mm

TRACTOR - - MODEL NUMBER 917.253250

LIFT ASSEMBLY



KEY NO.	PART NO.	DESCRIPTION
2	195223	Shaft Asm., Lift
3	195230	Lever Asm., Lift RH
7	196492X428	Grip, Lever
10	196314	Spring Torsion
87	194209	Pin Cotter 7/16 Bow Tie Lock
88	195303	Spring Lift Assist
89	19191912	Washer Clear Zinc

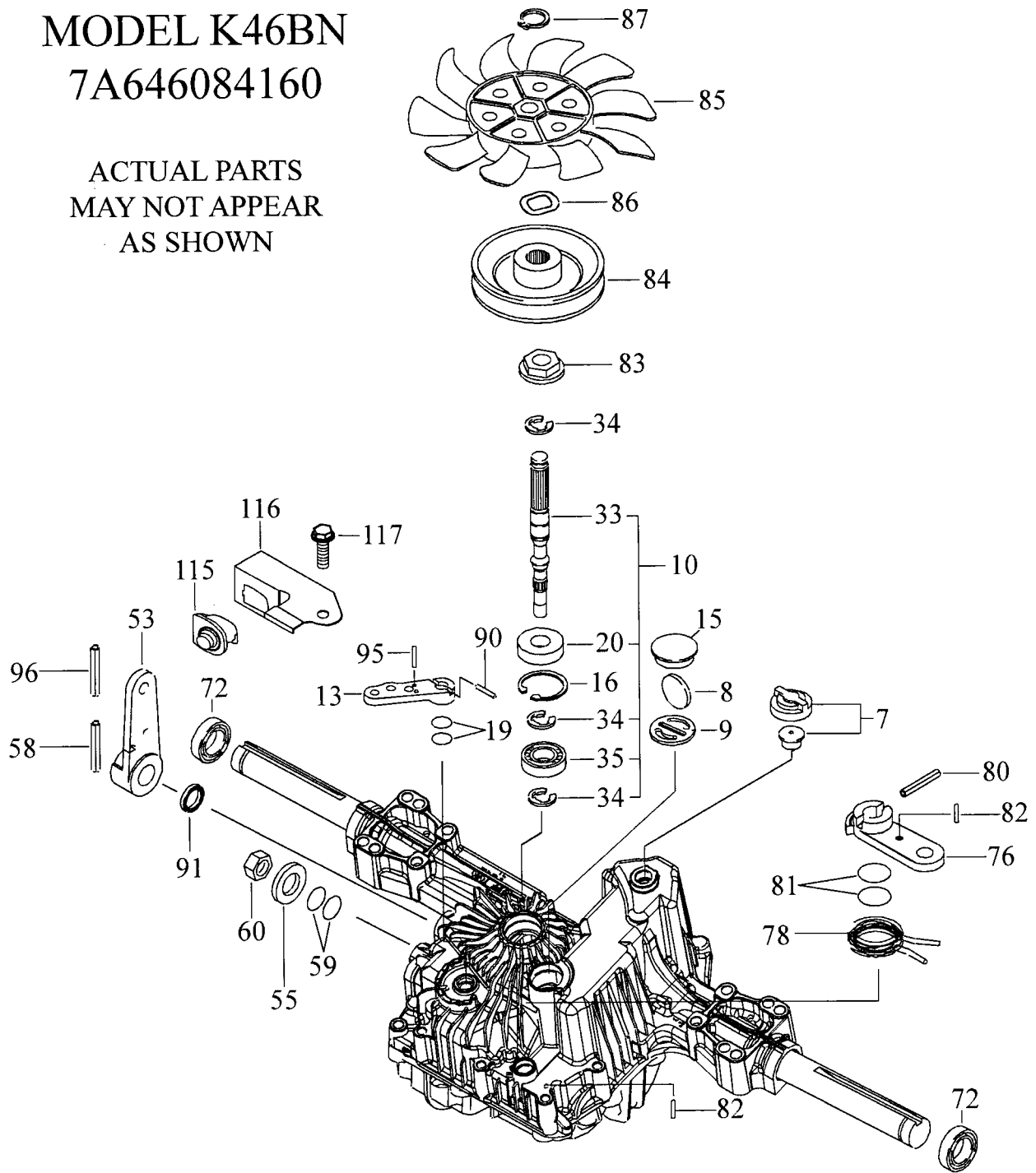
KEY NO.	PART NO.	DESCRIPTION
90	194208	Pin Cotter 5/16 Bow Tie Lock
91	197984	Link Lift Asm. Rear
97	17000612	Screw 3/8-16 x 3/4
98	195264	Link Asm. Susp. Front Mower

NOTE: All component dimensions give in U.S. inches
1 inch = 25.4 mm

TRACTOR - - MODEL NUMBER 917.253250
TUFF TORQ TRANSAXLE - - MODEL NUMBER K46BN

MODEL K46BN
7A646084160

ACTUAL PARTS
MAY NOT APPEAR
AS SHOWN

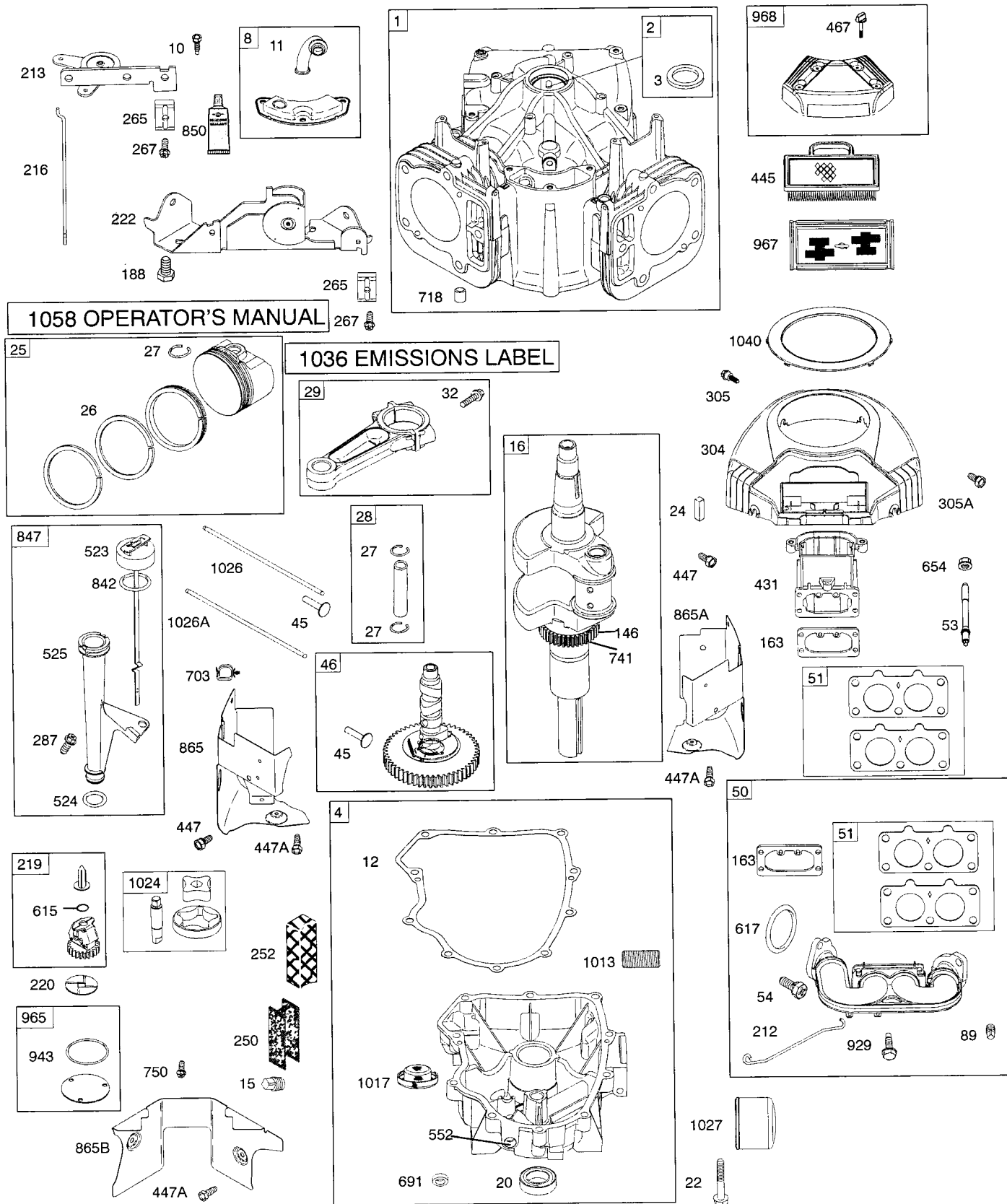


**TRACTOR - - MODEL NUMBER 917.253250
TUFF TORQ TRANSAXLE - - MODEL NUMBER K46BN**

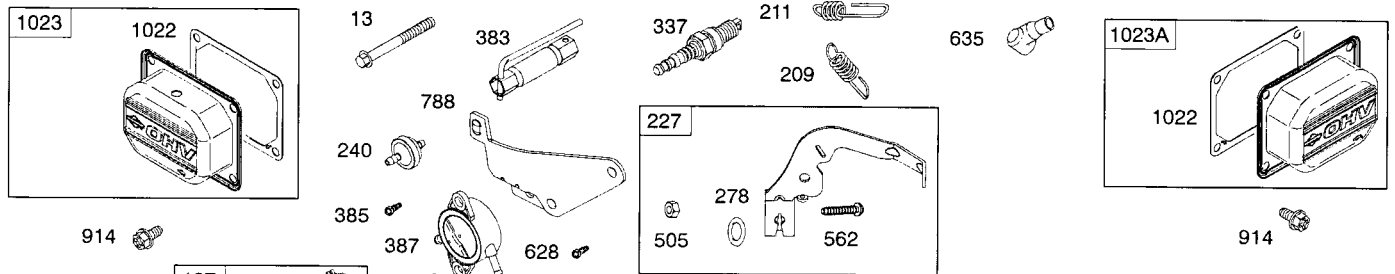
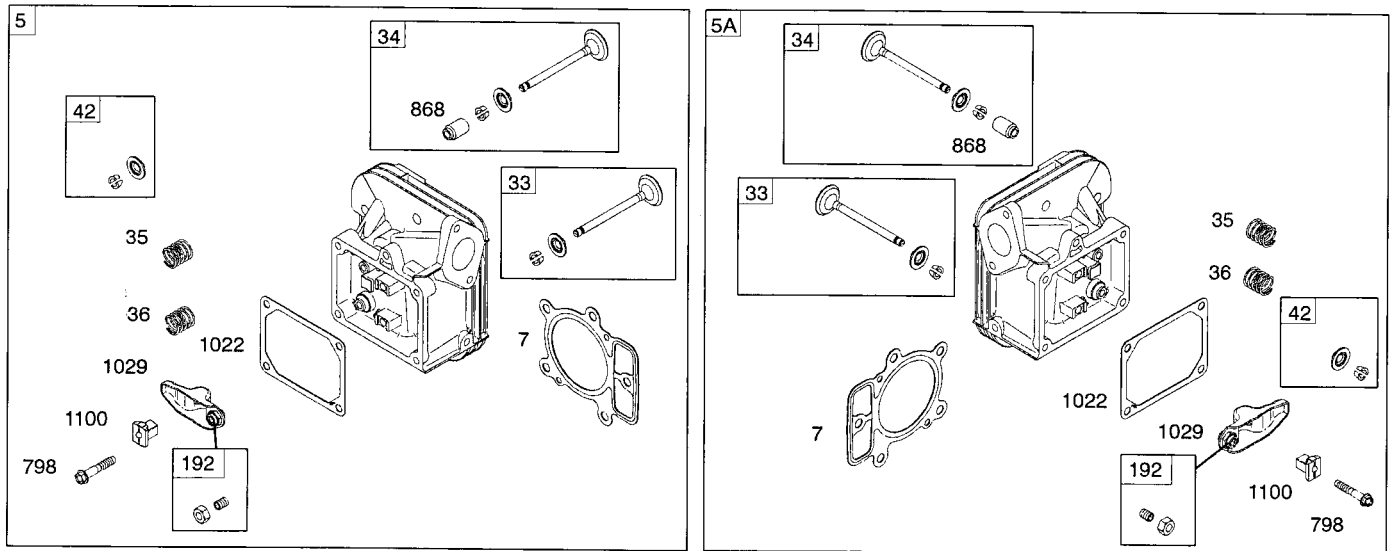
KEY NO.	PART NO.	DESCRIPTION
7	414395	Vent Valve 15
8	414396	Magnet
9	414397	Magnet Holder
10	415923	Pump Shaft/Bearing Kit
13	414398	Bypass Lever
15	414399	Sealing Cap 30
16	414400	Snap Ring C 35
19	414401	O-Ring 1A P10A
20	414402	Seal TC 153507
33	414403	Pump Shaft (Standard)
34	414404	E-ring 15
35	414405	Bearing 6202C3
53	414431	Control Lever F
55	415924	Washer 12
58	415925	Roll Pin 6 * 40
59	415926	O-Ring 1A P14
60	415927	Nut 12
72	414407	Seal 19 * 32 * 8
76	414408	Brake Lever
78	414409	Brake Return Spring
80	414410	Spring Pin 5 * 32
81	414411	O-Ring 1A P12
82	414412	Spring Pin 4 * 16
83	414413	Spine Collar
84	414414	Pulley L
85	414415	Fan, Black
86	414416	Wave Washer
87	414417	Snap Ring
90	414418	Spring Pin 3.0A * 20
91	414419	Oil Seal 16 * 22 *.03
95	415850	Spring Pin 3.0A*16
96	414420	Roll Pin 3.5 * 40
115	415928	Switch 6440-11 Delta
116	415929	Switch Bracket
117	415930	Tapping Screw 8 * 20

NOTE: All component dimensions give in U.S.
1 inch = 25.4 mm

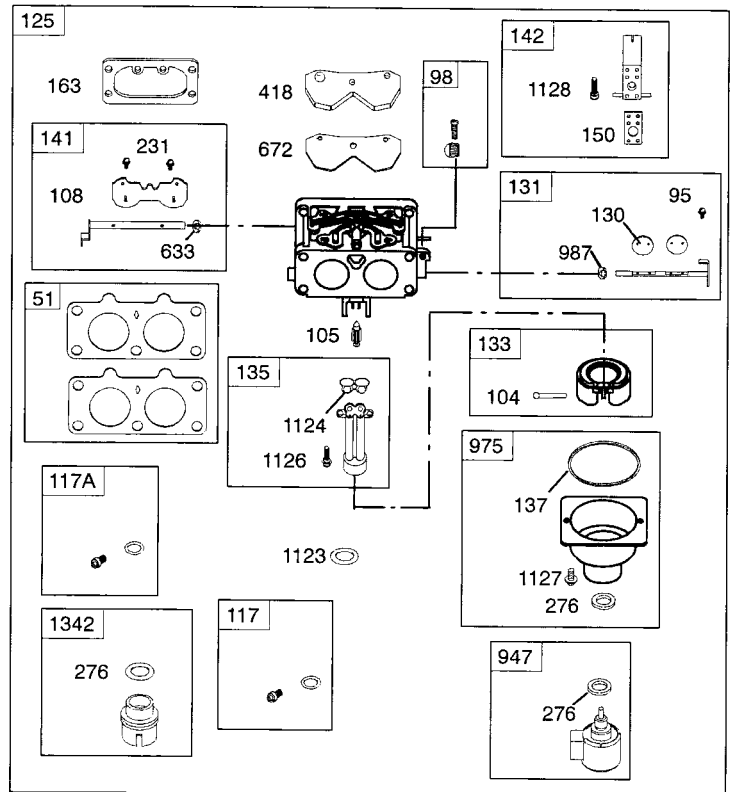
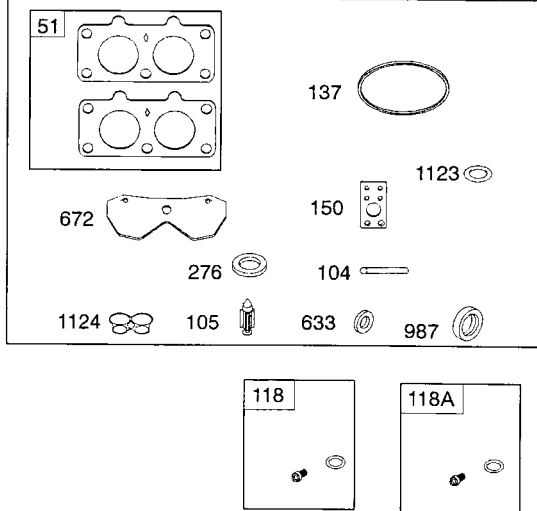
TRACTOR - - MODEL NUMBER 917.253250
BRIGGS & STRATTON ENGINE-MODEL NUMBER 445677, TYPE NUMBER 1145-B1



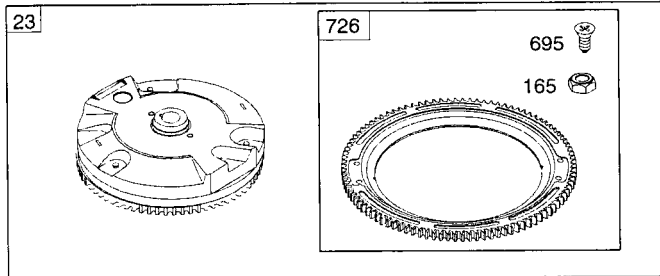
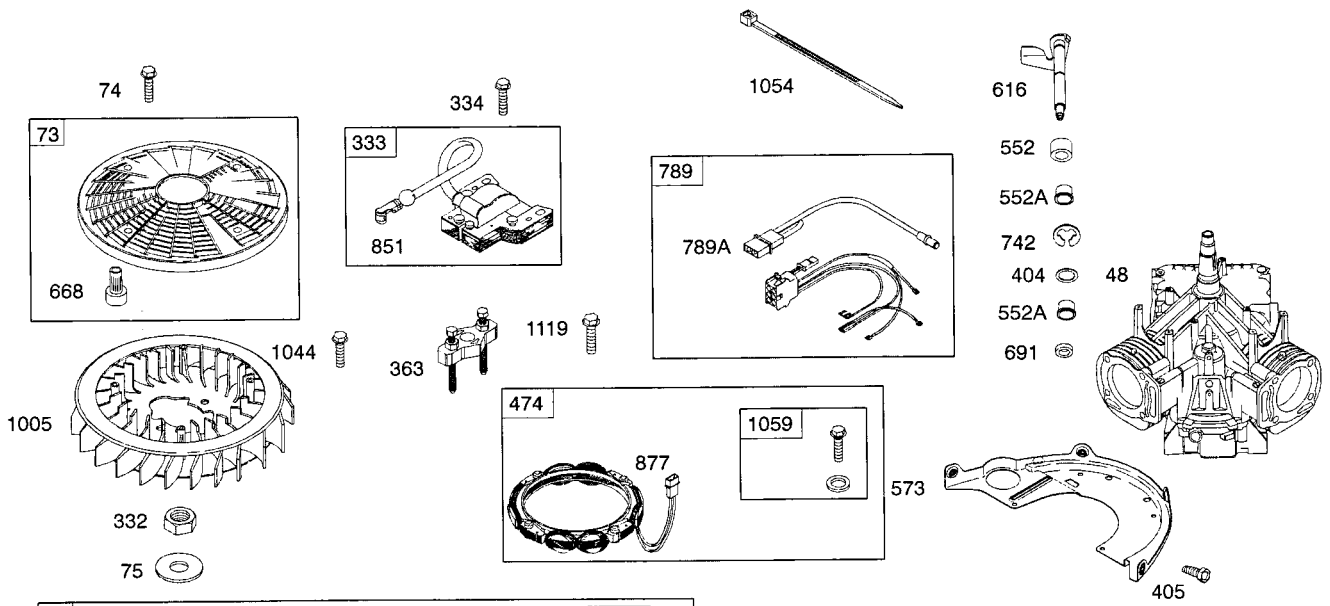
TRACTOR - - MODEL NUMBER 917.253250
BRIGGS & STRATTON ENGINE-MODEL NUMBER 445677, TYPE NUMBER 1145-B1



121 CARBURETOR OVERHAUL KIT

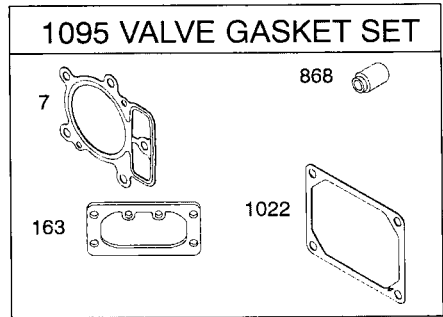


TRACTOR - - MODEL NUMBER 917.253250
BRIGGS & STRATTON ENGINE-MODEL NUMBER 445677, TYPE NUMBER 1145-B1

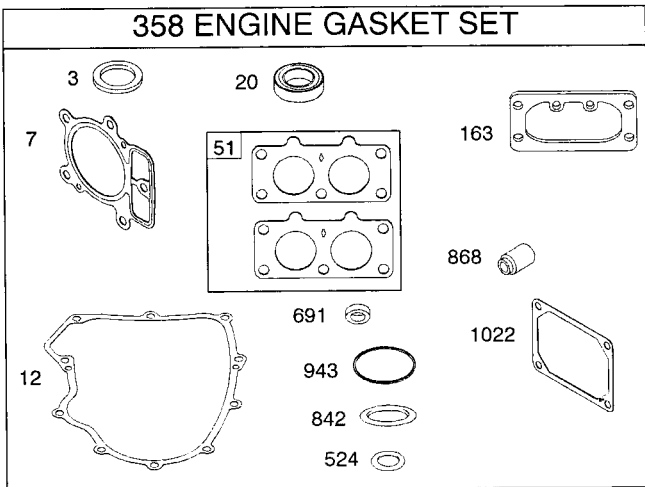


1329 REPLACEMENT ENGINE

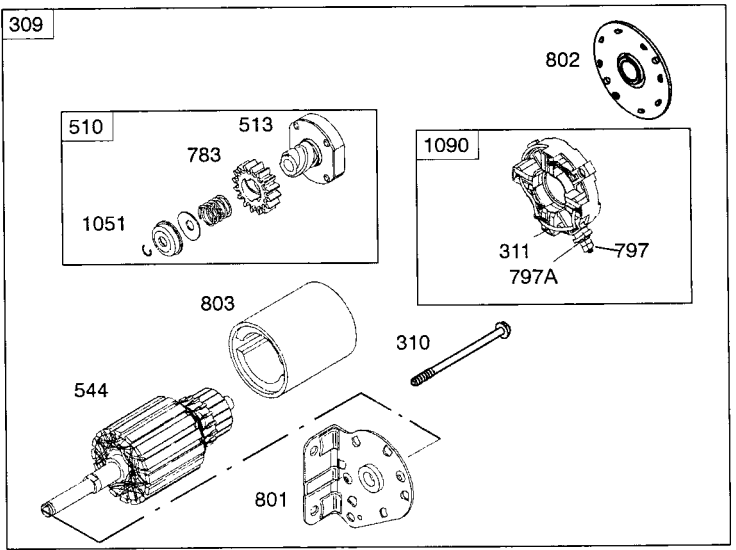
1330 REPAIR MANUAL



1095 VALVE GASKET SET



358 ENGINE GASKET SET



309

TRACTOR - - MODEL NUMBER 917.253250
BRIGGS & STRATTON ENGINE-MODEL NUMBER 445677, TYPE NUMBER 1145-B1

KEY NO.	PART NO.	DESCRIPTION	KEY NO.	PART NO.	DESCRIPTION
1	699753	Cylinder Assembly	146	690979	Key-Timing
2	499585	Kit-Bushing/Seal (Magneto Side)	150	690995 ∅	Gasket-Nozzle
3	391086s•	Seal-Oil (Magneto Side)	163	691001 •+	Gasket-Air Cleaner
4	699747	Sump-Engine	165	693148	Nut (Ring Gear)
5	792299	Head-Cylinder (Cylinder 1)	187	791766	Line-Fuel (Cut to Required Length)
5A	792300	Head-Cylinder (Cylinder 2)			
7	693997 •+	Gasket-Cylinder Head	188	691108	Screw (Control Bracket)
8	792185	Breather Assembly	192	690083	Adjuster-Rocker Arm
10	691108	Screw (Breather Assembly)	209	793340	Spring-Governor
11	792184	Tube-Breather	211	691019	Spring-Governed Idle
12	697227 •	Gasket-Crankcase	212	695238	Link-Governor
13	791130	Screw (Cylinder Head)	213	691021	Bracket-Choke Control
15	690946	Plug-Oil Drain	216	691022	Link-Choke
16	790132	Crankshaft	219	793338	Gear-Governor
20	795387 •	Seal-Oil (PTO Side)	220	690412	Washer (Governor Gear)
22	694966	Screw (Crankcase Cover)	222	698757	Bracket-Control
23	691053	Flywheel	227	792492	Lever-Governor Control
24	222698s	Key-Flywheel	231	690718	Screw (Choke Valve)
25	792117	Piston Assembly (Standard)	240	691035	Filter-Fuel
	792144	Piston Assembly (.020" Oversize)	250	690957	Retainer-Breather
26	792026	Ring Set (Standard)	252	690956	Collector-Oil
	792073	Ring Set (.020" Oversize)	265	691024	Clamp-Casing
27	690975	Lock-Piston Pin	267	792629	Screw (Casing Clamp)
28	690229	Pin-Piston (Standard)	276	695410 •∅	Washer-Sealing
29	699699	Rod-Connecting (Standard)	278	792651	Washer-Sealing (Governor Control Lever)
32	690976	Screw (Connecting Rod)			
33	499596	Valve-Exhaust	287	691108	Screw (Dipstick/Tube Assembly)
34	792200	Valve-Intake	304	790688	Housing-Blower
35	694865	Spring-Valve (Intake)	305	691005	Screw (Blower Housing)
36	694865	Spring-Valve (Exhaust)	305A	790690	Screw (Blower Housing)
42	499586	Keeper-Valve	309	497595	Motor-Starter
45	690977	Tappet-Valve	310	690323	Screw (Starter Motor)
46	790562	Camshaft	311	497608	Brush Set
48	698173	Short Block	332	691059	Nut (Flywheel)
50	695241	Manifold-Intake	333	691060	Armature-Magneto
51	791677 •∅	Gasket-Intake	334	691061	Screw (Magneto Armature)
53	690951	Stud (Carburetor)	337	691043	Plug-Spark
54	699816	Screw (Intake Manifold)	358	694012	Gasket Set-Engine
73	691055	Screen-Rotating	363	19203	Puller-Flywheel
74	698425	Screw (Rotating Screen)	383	89838s	Wrench-Spark Plug
75	691056	Washer (Flywheel)	385	691108	Screw (Fuel Pump)
89	690283	Plug-Oil	387	808656	Pump-Fuel
95	690718	Screw (Throttle Valve)	404	690442	Washer (Governor Crank)
98	699721	Kit-Idle Speed	405	697820	Screw (Back Plate)
104	694918 ∅	Pin-Float Hinge	418	690999	Plate-Carburetor
105	698537 ∅	Valve-Float Needle	431	790816	Elbow-Intake
108	699723	Valve-Choke	445	499486s	Filter-Air Cleaner Cartridge
117	791501	Jet-Main (Standard)(Left)	447	691003	Screw (Air Guide Cover)
117A	791502	Jet-Main (Standard)(Right)	447A	691108	Screw (Air Guide Cover)
118	695415	Jet-Main (High Altitude)(Left)	467	691008	Knob-Air Cleaner
118A	843099	Jet-Main (High Altitude)(Right)	474	696458	Alternator
121	792455	Kit-Carburetor Overhaul	505	691029	Nut (Governor Control Lever)
125	791230	Carburetor	501	691185	Regulator
130	690993	Valve-Throttle	510	696541	Drive-Starter
131	499805	Kit-Throttle Shaft	513	692024	Clutch-Drive
133	699724	Float-Carburetor	523	691036	Dipstick
135	699729	Tube-Fuel Transfer	524	691032 •	Seal-O Ring (Dipstick Tube)
137	690994 ∅	Gasket-Float Bowl	525	691037	Tube-Dipstick
141	699722	Kit-Choke Shaft	526	691108	Screw (Regulator)
142	699726	Nozzle-Carburetor			

TRACTOR - - MODEL NUMBER 917.253250
BRIGGS & STRATTON ENGINE-MODEL NUMBER 445677, TYPE NUMBER 1145-B1

KEY NO.	PART NO.	DESCRIPTION	KEY NO.	PART NO.	DESCRIPTION
544		Armature-Starter (Serviced by 497595 Starter Motor Only)	1023A	499600	Cover-Rocker Arm (Cylinder 2)
			1024	794416	Pump-Oil
552	690552	Bushing-Governor Crank	1026	690981	Rod-Push (Steel)
552A	690553	Bushing-Governor Crank	1026A	690982	Rod-Push (Aluminum)
562	690311	Bolt (Governor Control Lever)	1027	492932s	Filter-Oil
573	790444	Plate-Back	1029	690972	Arm-Rocker
601	791850	Clamp-Hose	1036		Label-Emissions (Available from an authorized Briggs & Stratton Dealer)
615	698290	Retainer-Governor Shaft			
616	691045	Crank-Governor			
617	697891	Seal-O Ring (Intake Manifold)	1040	791237	Plate-Trim
633	690998 Ø	Seal-Choke/Throttle Shaft	1051	691265	Ring-Retaining
635	66538s	Boot-Spark Plug	1054	280275	Cable-Tie
654	690958	Nut (Carburetor)	1058	MS3373	Operator's Manual
668	691215	Spacer	1059	698516	Kit-Screw/Washer
672	690234 Ø	Gasket-Carburetor Plate	1070	690372	Screw (Flywheel Fan)
691	790574 •	Seal-Governor Shaft	1090	691293	Retainer-Brush
695	693149	Screw (Ring Gear)	1095	694013	Set-Valve Gasket
697	690372	Screw (Drive Cap)	1100	690973	Pivot-Rocker Arm
703	691010	Clip	1119	691183	Screw (Alternator)
718	690959	Pin-Locating	1123	841653 Ø	Seal-O Ring (Solenoid Retainer)
726	499612	Gear-Ring	1124	690988 Ø	Seal-O Ring (Fuel Transfer Tube)
741	690980	Gear-Timing	1126	690991	Screw (Fuel Transfer Tube)
742	690328	Retainer-E Ring	1127	695407	Screw (Float Bowl)
750	696999	Screw (Oil Pump Cover)	1128	690990	Screw (Carburetor Nozzle)
783	695708	Gear-Pinion	1329	44P777-0026	Replacement Engine (Transfer the Speed Limiter Control Assembly to the Replacement Engine. Transfer Governor Spring to the replacement engine.)
788	793145	Bracket-Fuel Pump	1330	273521	Repair Manual
789	698330	Harness-Wiring	1342	699731	Extension Fuel Transfer Tube
789A	790544	Harness-Wiring			
797	691029	Nut (Brush Retainer)			
797A	693167	Nut (Brush Retainer)			
798	697890	Screw (Rocker Arm)			
801	691283	Cap-Drive			
802	691286	Cap-End			
803		Housing-Starter (Serviced by 497595 Starter Motor Only)			
842	691031 •	Seal-O Ring (Dipstick)	•		Included in Engine Gasket Set, Key. No. 358
847	499602	Assembly-Dipstick/Tube	Ø		Included in Carburetor Overhaul Kit, Key. No. 121
850	100100	Sealant-Liquid	+		Included in Valve Overhaul Kit, Key. No. 1095
851	493880s	Terminal-Spark Plug			
865	691012	Cover-Air Guide (Cylinder 1)			
865A	793205	Cover-Air Guide (Cylinder 2)			
865B	691015	Cover-Air Guide			
868	690968 •+	Seal-Valve			
877	399916	Wire/Connector-Alternator			
914	691127	Screw (Rocker Arm Cover)			
918	793147	Hose-Vacuum			
929	695239	Screw (Choke Control Bracket)			
943	690589 •	Seal-O Ring (Oil Pump Cover)			
947	841546	Solenoid-Fuel			
965	499613	Cover-Oil Pump			
967	273638s	Filter-Pre Cleaner			
968	791242	Cover-Air Cleaner			
975	791232	Bowl-Float			
987	691000 Ø	Seal-Throttle Shaft			
1005	790698	Fan-Flywheel			
1013	690954	Nipple-Oil Filter			
1017	690770	Screen-Oil Pump			
1022	690971 •+	Gasket-Rocker Cover			
1023	793146	Cover-Rocker Arm (Cylinder 1)			

NOTE: All component dimensions given in U.S. inches
1 inch = 25.4 mm

SERVICE NOTES

SERVICE NOTES

SERVICE NOTES

LIMITED WARRANTY ON CRAFTSMAN RIDING EQUIPMENT

For two (2) years from the date of purchase, if this Craftsman Riding Equipment is maintained, lubricated and tuned up according to the instructions in the owner's manual, Sears will repair or replace free of charge any parts that are found to be defective in material or workmanship according to the guidelines of coverage listed below. Sears will also provide free labor for these applicable warranted parts for the two full years. During the first 30 days of purchase, there will be no charges to service the product at your home for issues covered by this warranty. (See exclusions below). For your convenience, IN HOME warranty service will still be available after the first 30 days of purchase, but a trip charge will apply. This charge will be waived if the Craftsman product is dropped off at an authorized Sears location. For the nearest authorized Sears location, please call 1-800-4-MY-HOME®. This warranty applies only while this product is within the United States.

This Warranty does not cover:

- Expendable items which become worn during normal use, including but not limited to blades, spark plugs, air cleaners, belts, and oil filters.
- Standard Maintenance Servicing, oil changes, or tune-ups
- Tire replacement or repair caused by punctures from outside objects, such as nails, thorns, stumps, or glass.
- Repairs necessary because of operator abuse, including but not limited to, damage caused by towing objects beyond the capability of the riding equipment, impacting objects that bend the frame or crankshaft, or over-speeding the engine.
- Repairs necessary because of operator negligence, including but not limited to, electrical and mechanical damage caused by improper storage, failure to use the proper grade and amount of engine oil, failure to keep the deck clear of flammable debris, or failure to maintain the equipment according to the instructions contained in the owner's manual.
- Engine (fuel system) cleaning or repairs caused by fuel determined to be contaminated or oxidized (stale). In general, fuel should be used within 30 days of its purchase date.
- Normal deterioration and wear of the exterior finishes, or product label replacement.
- Riding equipment used for commercial or rental purposes.

LIMITED WARRANTY ON BATTERY

For ninety (90) days from date of purchase, if any battery included with this riding equipment proves defective in material or workmanship and our testing determines the battery will not hold a charge, Sears will replace the battery at no charge. During the first 30 days of purchase, there will be no charges to replace the battery at your HOME. After the first 30 days, for your convenience, IN-HOME warranty service will still be available but a trip charge will apply. This charge will be waived if the Craftsman product is dropped off at an authorized Sears location. For the nearest authorized Sears location, please call 1-800-4-MY-HOME®.

This battery warranty applies only while this product is within the United States.

This warranty gives you specific legal rights, and you may also have other rights, which vary, from state to state.

Sears, Roebuck and Co., Hoffman Estates, IL 60179

