

REPAIR PARTS MANUAL
MODEL NO. 253632
Lawn Tractor

CRAFTSMAN®

HOW TO USE THIS MANUAL

This manual is designed to provide the customer with a means to identify the parts on his/her tractor when ordering repair parts. The illustrations may or may not represent the actual assemblies; therefore, it is not recommended to use this manual as a guide to assemble or disassemble the tractor. Some hardware and parts are drawn larger in order to more readily identify them.

Each tractor has its own model number.

The model number for your tractor can be found on the fender under the seat.

When ordering parts, always give the following information:

- Product - "Tractor"
- Model Number - "253632"
- Part Number
- Part Description

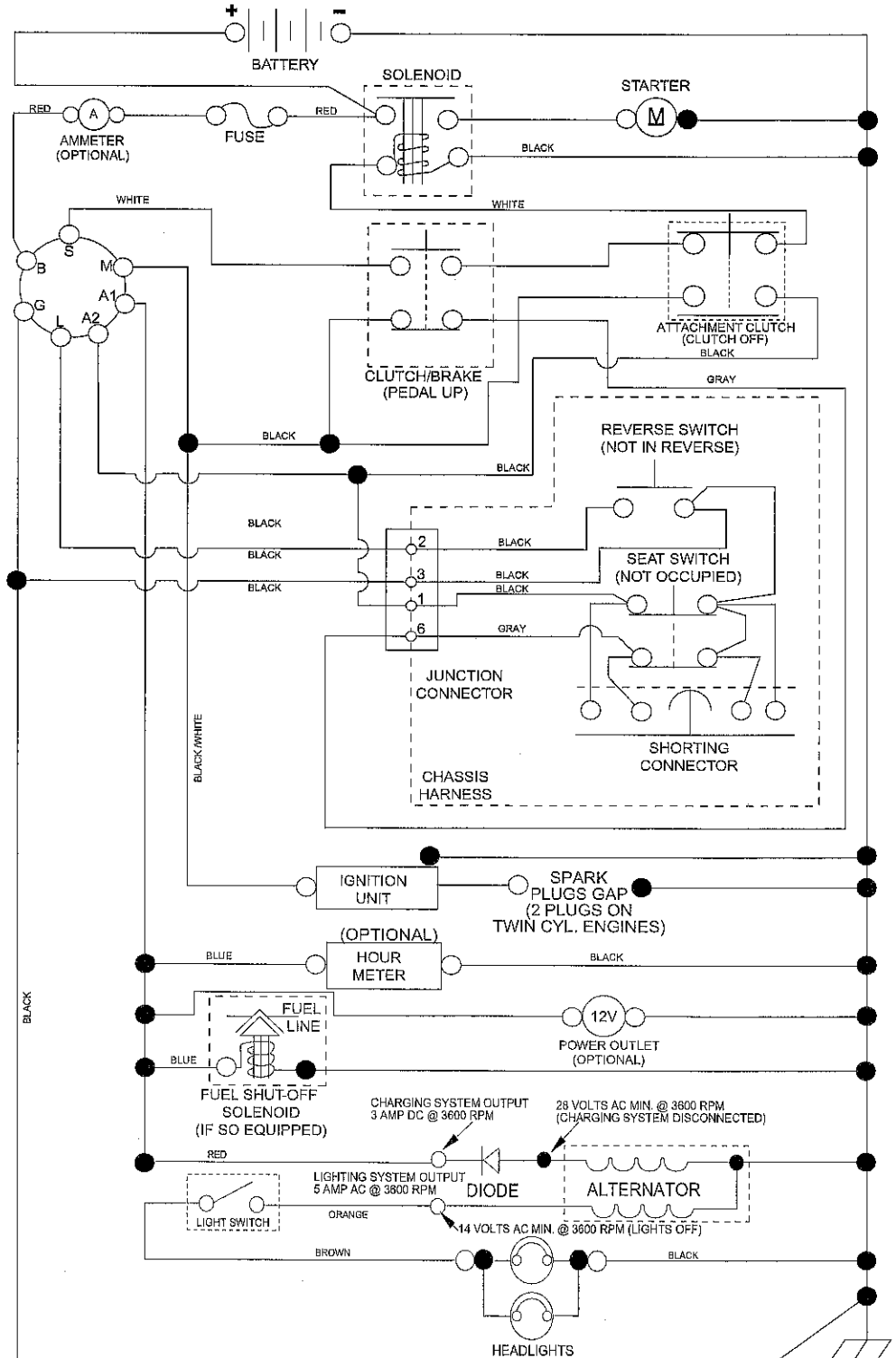
TABLE OF CONTENTS

SCHEMATIC	3
ELECTRICAL.....	4-5
CHASSIS	6-7
DRIVE.....	8-9
STEERING	10-11
SEAT	12
DECALS.....	13
ENGINE.....	14-15
MOWER LIFT.....	16-17
MOWER DECK.....	18-19
TRANSAXLE BREAKDOWN	20-21
ENGINE BREAKDOWN.....	22-25
WARRANTY.....	26

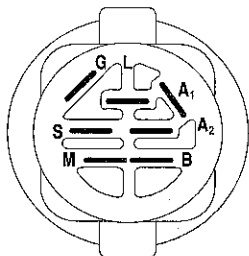
TRACTOR- -MODEL NO. 917.253632

SCHEMATIC

SCH11

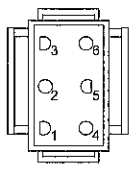


NOTE
 YOUR TRACTOR IS EQUIPPED WITH A SPECIAL ALTERNATOR SYSTEM. THE LIGHTS ARE NOT CONNECTED TO THE BATTERY, BUT HAVE THEIR OWN ELECTRICAL SOURCE. BECAUSE OF THIS, THE BRIGHTNESS OF THE LIGHTS WILL CHANGE WITH ENGINE SPEED. AT IDLE THE LIGHTS WILL DIM. AS THE ENGINE IS SPEEDED UP, THE LIGHTS WILL BECOME THEIR BRIGHTEST.

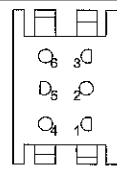


IGNITION SWITCH

POSITION	CIRCUIT	"MAKE"
OFF	M+G+A1	
RUN/OVERRIDE	B+A1	
RUN	B+A1	L+A2
START	B+S+A1	



CHASSIS HARNESS CONNECTOR (MATING SIDE)



DASH HARNESS CONNECTOR (MATING SIDE)

WIRING INSULATED CLIPS
 NOTE: IF WIRING INSULATED CLIPS WERE REMOVED FOR SERVICING OF UNIT, THEY SHOULD BE RE-INSTALLED TO PROPERLY SECURE YOUR WIRING.

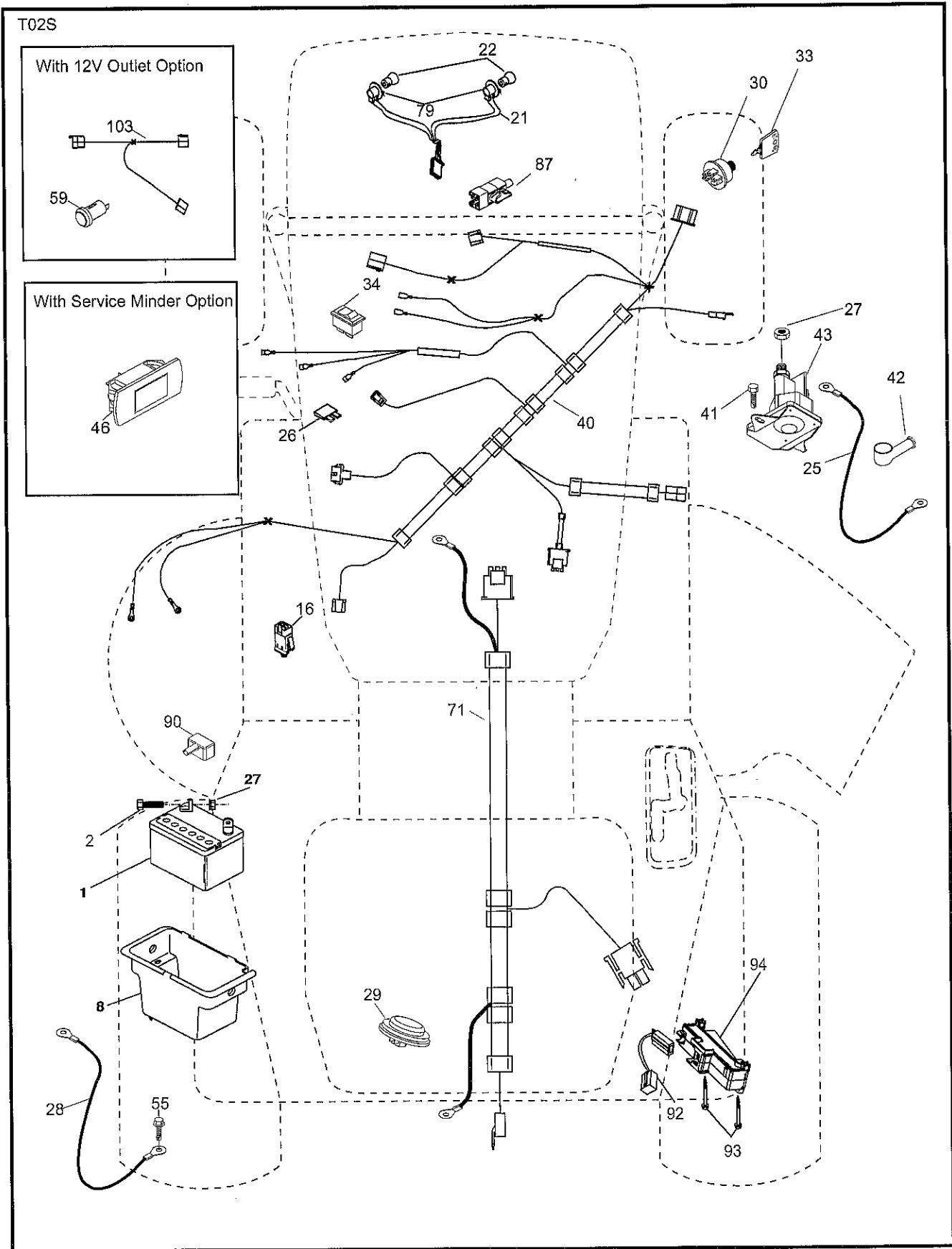
NON-REMOVABLE CONNECTIONS

REMOVABLE CONNECTIONS

REPAIR PARTS

TRACTOR- -MODEL NO. 917.253632

ELECTRICAL



REPAIR PARTS

TRACTOR- -MODEL NO. 917.253632

ELECTRICAL

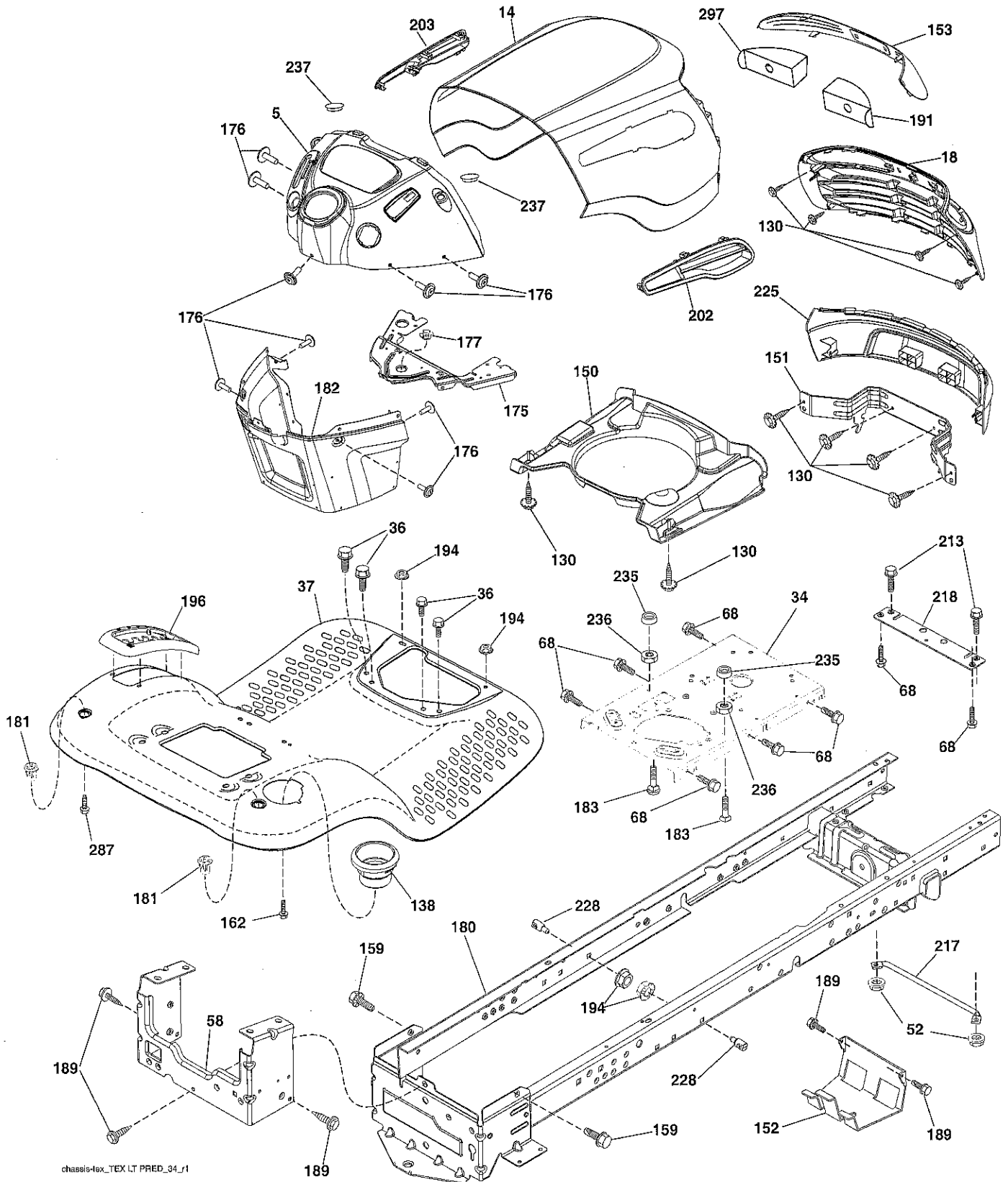
KEY NO.	PART NO.	DESCRIPTION
1	163465	Battery
2	74760412	Bolt Hex Hd 1/4-20 unc x 3/4
8	193228	Box Battery
16	176138	Switch Interlock Push-In
21	400252	Harness Socket Light w/4152J
22	4152J	Bulb Light
25	412894	Cable Starter
26	175158	Fuse
27	73510400	Nut Keps Hex 1/4-20 unc
28	198885	Cable, Ground
29	401545	Switch, Seat
30	193350	Switch, Ign
33	411934	Key/Chain
34	110712X	Switch Light / Reset
40	401098	Harness Ign. Dash
41	17720408	Screw Thd Cut 1/4-20 x 1/2
42	131563	Cover, Terminal
43	192507	Solenoid
55	17060512	Screw Thdrol 5/16-18 x 3/4 TYTT
71	400449	Harness Ign. Chassis
79	175242	Bulbholder Asm. Incan Descent
87	197802	Switch Interlock Clutch Cable
90	435395	Cover Terminal Battery
92	196615	Harness Pigtail Reverse Switch
93	192540	Screw Plastite 10 - 14 x 2 00
94	191834	Module Reverse Ros

NOTE: All component dimensions given in U.S. inches.
1 inch = 25.4 mm.

REPAIR PARTS

TRACTOR- -MODEL NO. 917.253632

CHASSIS AND ENCLOSURES



chassis-tox_TEX LT PRED_34_r1

REPAIR PARTS

TRACTOR- -MODEL NO. 917.253632

CHASSIS AND ENCLOSURES

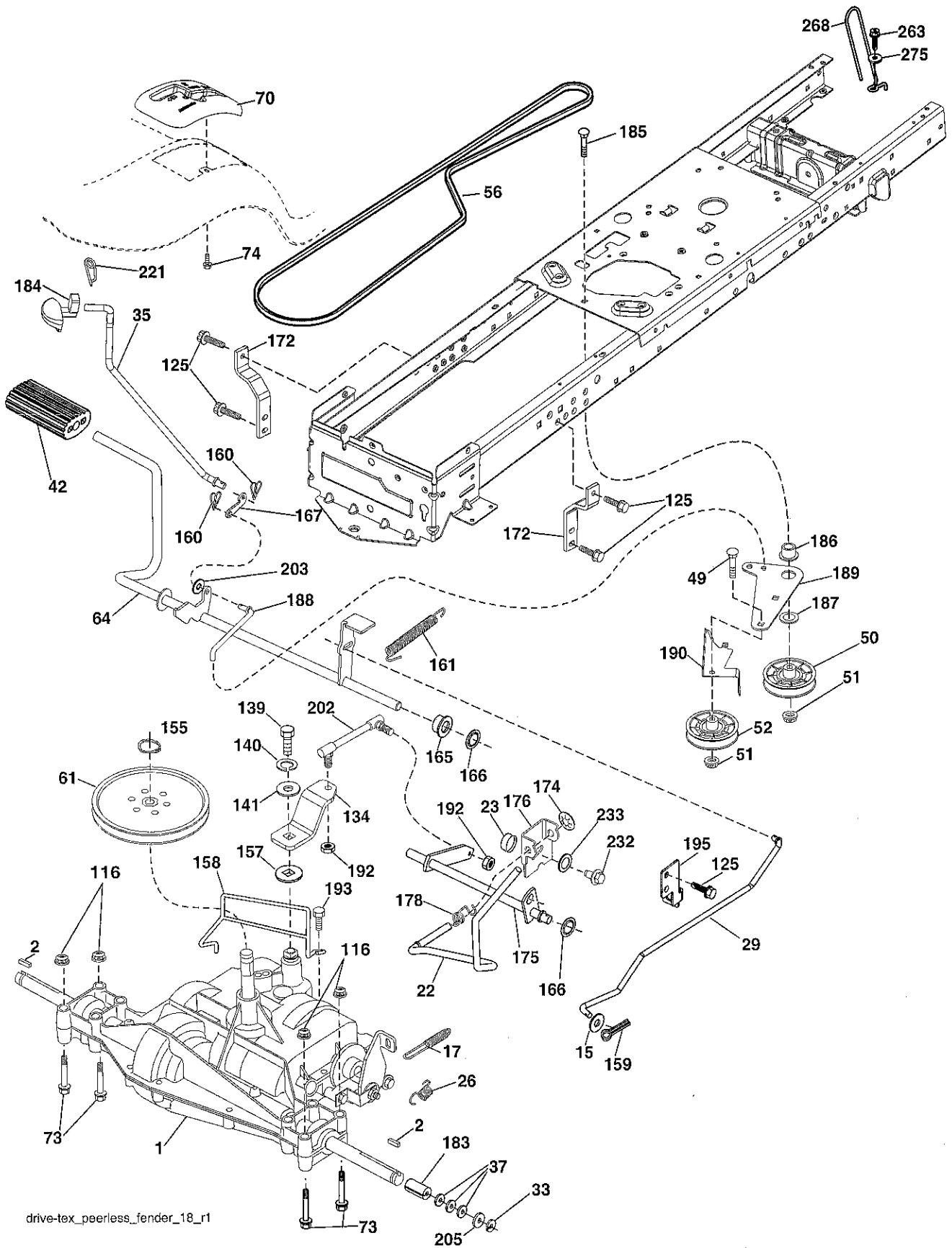
KEY NO.	PART NO.	DESCRIPTION
5	408874X428	Dash
14	198416X613	Hood
18	423156	Grille
34	196125	Plate Engine
36	17060512	Screw 5/16-18 x 3/4
37	414872X613	Fender
52	73680500	Nut Crown Lock 5/16-18
58	412280	Drawbar Upper
68	17490508	Screw Thdrol 5/16-18 x 1/2
130	416358	Screw #10 x 0.750
138	193224X428	Cupholder
150	400267	Duct Heat Hood
151	187568	Bracket Pivot
152	199535	Shield Browning/Debris
153	400550X599	Lens
159	17000612	Screw Hexwsh Thdrol 3/8-16 x 3/4
162	142432	Screw Hex Wsh Hi-Lo 1/4 x 1/2
175	199472	Crossmember
176	400776	Screw 10-24 x 5/8 Wshd Qdrx
177	195228	Bushing Steering
180	415063	Chassis
181	193102X428	Bushing Mtg. Fender Crgo.
182	407176	Dash Lower
183	74520520	Bolt Full Thd 5/16-18 x 1-1/4
189	17000512	Screw 5/16-18 x 3/4
191	416502	Insert Reflective RH
194	73900500	Nut Lock Hex Flange 5/16-18
196	414579	Console Asm. Deck Lift
202	423173	Vent Hood Side Panel RH
203	423172	Vent Hood Side Panel LH
213	74760512	Bolt Hex Hd 5/16-18 x 3/4
217	409167	Rod Pivot Hood
218	196395	X-Piece Hood Stop
225	400549X613	Bumper
228	195161	Stud Fastener
235	406129	Spacer Fender
236	73930500	Nut Center Lock 5/16-18
237	403704	Plug Mount Cargo
287	17600406	Screw 1/4-20 x 3/8
297	401827	Insert Reflective LH

NOTE: All component dimensions given in U.S. inches.
1 inch = 25.4 mm.

REPAIR PARTS

TRACTOR- -MODEL NO. 917.253632

DRIVE



drive-tex_peerless_fender_18_r1

REPAIR PARTS

TRACTOR- -MODEL NO. 917.253632

DRIVE

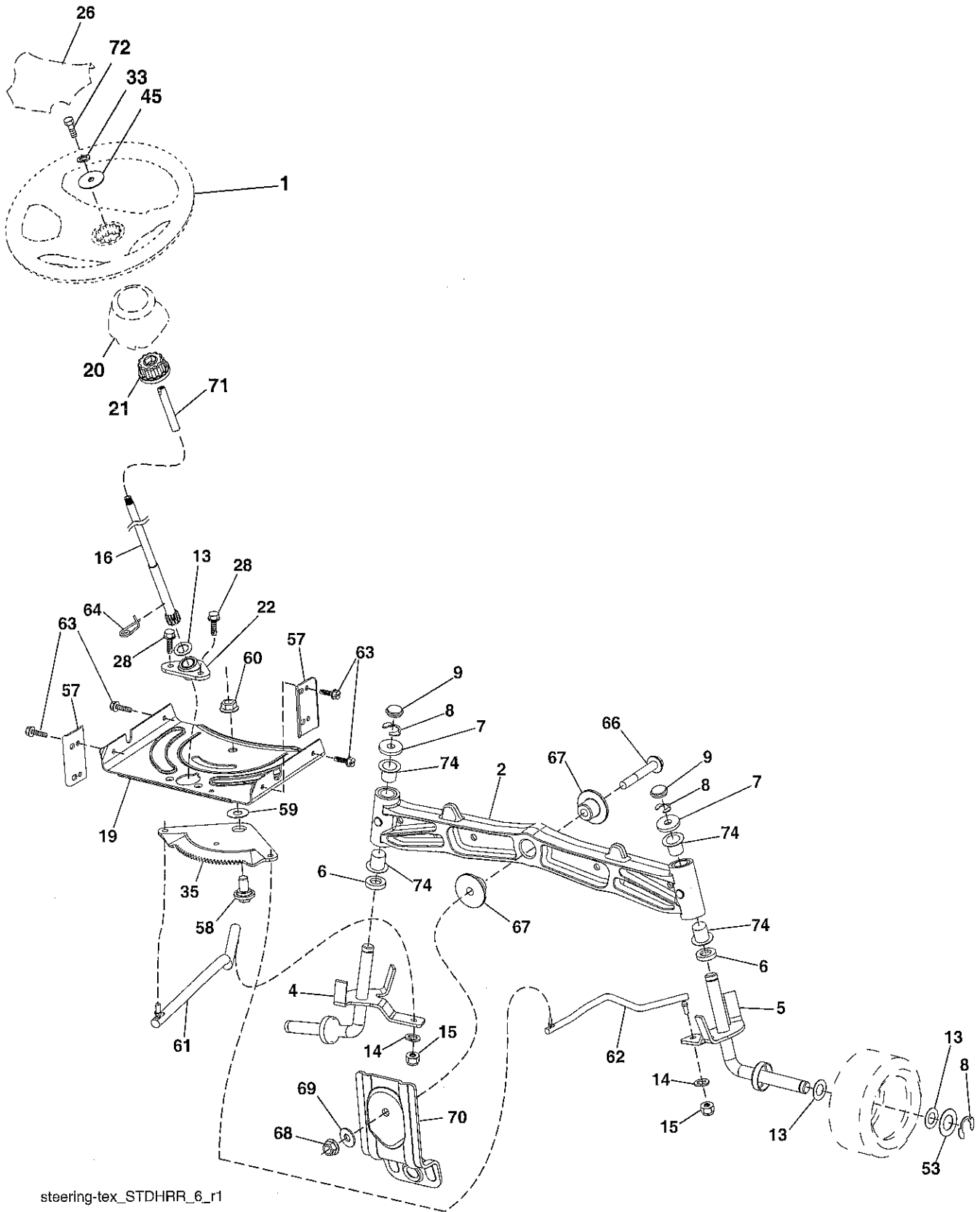
KEY NO.	PART NO.	DESCRIPTION	KEY NO.	PART NO.	DESCRIPTION
1	197941	Transaxle, Peerless 206-565 (See Transaxle Breakdown)	161	105709X	Spring, Return, Clutch
2	123583X	Key Square	165	196212	Busing Shaft Brake Hand Control
15	19131316	Washer 13/32 x 13/16 x 16 Ga.	166	429164	Nut Push .625
17	197297	Spring, Brake	167	405257	Latch Brake Parking
22	197660	Rod Shift	172	197657	Strap Torque LH
23	106933X	Knob	174	197289	Nut Push
26	197455	Spring Brake RTN	175	197858	Shaft Asm Shift
29	197267	Rod, Brake	176	196214	Arm Clevis Rod Shift
33	12000001	Ring E	178	197456	Spring Shift
35	401031	Rod, Brake, Park	183	137057	Spacer, Axle
37	121749X	Washer 25/32 x 1-1/4 x 16 Ga.	184	199996X667	Handle Parking Brake
42	8883R	Cover, Foot Pedal	185	72110622	Bolt
49	72110614	Bolt	186	194321	Spacer Retainer
50	194327	Pulley Idler Flat	187	19133210	Washer
51	73900600	Lock Nut 3/8-16	188	194323	Link Clutch Ground Drive
52	194326	Idler V-Groove	189	194317	Bellcrank Ground Drive
56	194346	V-Belt, Drive	190	194318	Keeper Bellcrank Ground Drive
61	123666X	Pulley Transaxle	192	150360	Nut Lock Center 1/4-28
64	196200	Shaft Asm. Pedal Brake Control	193	17060512	Screw 5/16-18 x 3/4
70	193225X428	Console	195	197332	Bracket Brake Rod
73	74490544	Bolt 5/16-18 Gr. 5	202	197859	Link Shift
74	142432	Screw 1/4 x 1/2	203	19111116	Washer 11/32 x 11/16 x 16 Ga.
116	73900500	Nut Lock Hex Flange 5/16-18	205	121748X	Washer 25/32 x 1-5/8 x 16 Ga.
125	17000512	Screw 5/16-18 x 3/4	221	403187	Retainer Spring Clip Handle
134	197857	Arm Shift	232	74780716	Bolt 7/16-14 x 1 Gr. 5
139	74550412	Bolt 1/4-20 unf Gr. 8 w/Patch	233	405296	Washer Serrated
140	10040400	Washer Lock Hvy Helical 1/4	263	17000612	Screw Hexwsh Thdr 3/8-16 x 3/4
141	19091210	Washer 9/32 x 3/4 x 10 Ga.	268	182402	Guard Muffler
155	12000028	Ring Retainer	275	19131614	Washer 13/32 x 1 x 14 Ga.
157	105701X	Washer Plate Shf			
158	194352	Keeper T/A			
159	76020412	Pin Cotter 1/8 x 3/4			
160	169484	Retainer Clip			

NOTE: All component dimensions given in U.S. inches
1 inch = 25.4 mm

REPAIR PARTS

TRACTOR- -MODEL NO. 917.253632

STEERING ASSEMBLY



steering-tex_STDHRR_6_r1

REPAIR PARTS

TRACTOR- -MODEL NO. 917.253632

STEERING ASSEMBLY

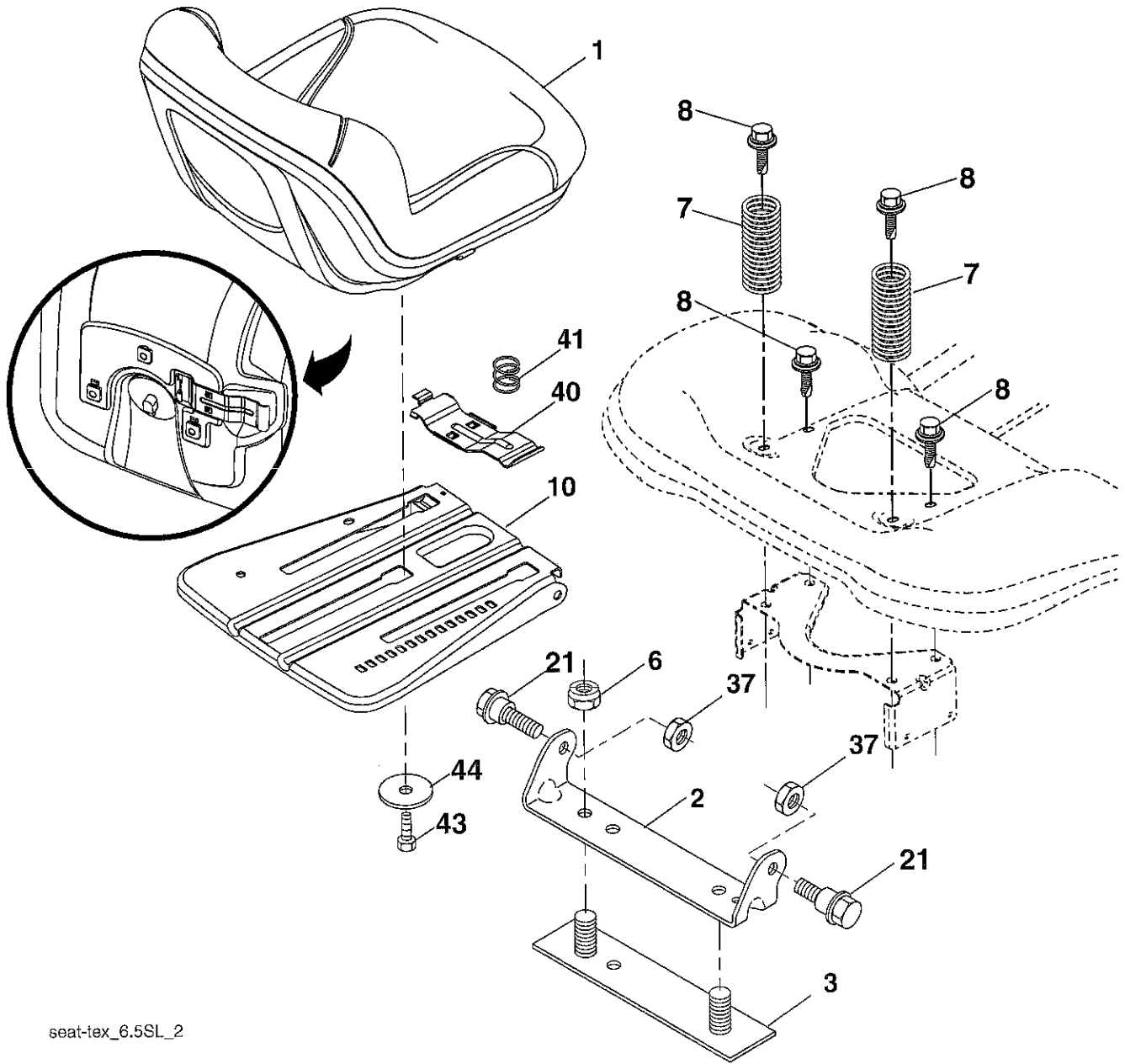
KEY NO.	PART NO.	DESCRIPTION
1	414803X428	Wheel, Steering
2	418168	Axle Asm., Front
4	403087	Spindle Asm., LH
5	403088	Spindle Asm., RH
6	6266H	Washer Thrust 0.75 x 1.23
7	121748X	Washer 25/32 x 1-5/8 x 16 Ga.
8	12000029	Ring, Clip #T5304-75
9	121232X	Cap, Spindle
13	121749X	Washer 25/32 x 1-1/4 x 16 Ga.
14	10040600	Washer Lock 3/8
15	73540600	Nut, Crown Lock 3/8-24 unf
16	429373	Shaft Steering
19	194729	Plate Steering
20	400803X428	Boot, Steering
21	186737	Adapter, Wheel Steering
22	420537	Steering Supt. Lower
26	414852X428	Insert, Wheel Steering
28	17000612	Screw 3/8-16 x 3/4
33	10040500	Washer Lock 5/16
35	194732	Gear, Sector Plate
45	19113812	Washer 11/32 x 2-3/8 x 12 Ga.
53	188967	Washer Hardened .793 x 1.637 x .060
57	407465	Bracket Upstop
58	194747	Bolt Shoulder Sector Pivot CFM
59	194748	Washer Thrust Sector Steering
60	73971000	Nut Flange Lock 5/8-11
61	194740	Draglink, LH
62	194741	Draglink, RH
63	17000512	Screw 5/16-18 x 3/4
64	199849	Retainer Clip Spring Steering
66	71020748	Bolt Hex Fghd 7/16-14 x 3 Serr
67	194737	Bushing PM Front Axle
68	73900700	Nut Lock Flange 7/16-14 Gr. 5
69	199162	Washer 1.5 x .505 x .118
70	196197	Bracket Deck Susp. Front
71	190752	Shaft Ext. Steering
72	428982	Bolt Fin Hex 5/16-18 x 4
74	3366R	Bearing

NOTE: All component dimensions given in U.S. inches.
1 inch = 25.4 mm.

REPAIR PARTS

TRACTOR- -MODEL NO. 917.253632

SEAT ASSEMBLY



seat-tex_6.5SL_2

KEY NO.	PART NO.	DESCRIPTION
1	423644	Seat
2	180166	Bracket Pivot Fender
3	140675	Strap, Asm Fender
6	73800600	Nut, Lock w/Ins. 3/8-16 unc
7	124181X	Spring, Seat Cprsn
8	171877	Bolt 5/16-18 unc x 3/4 w/Sems
10	196977	Pan, Seat
21	171852	Bolt, Shoulder 5/16-18

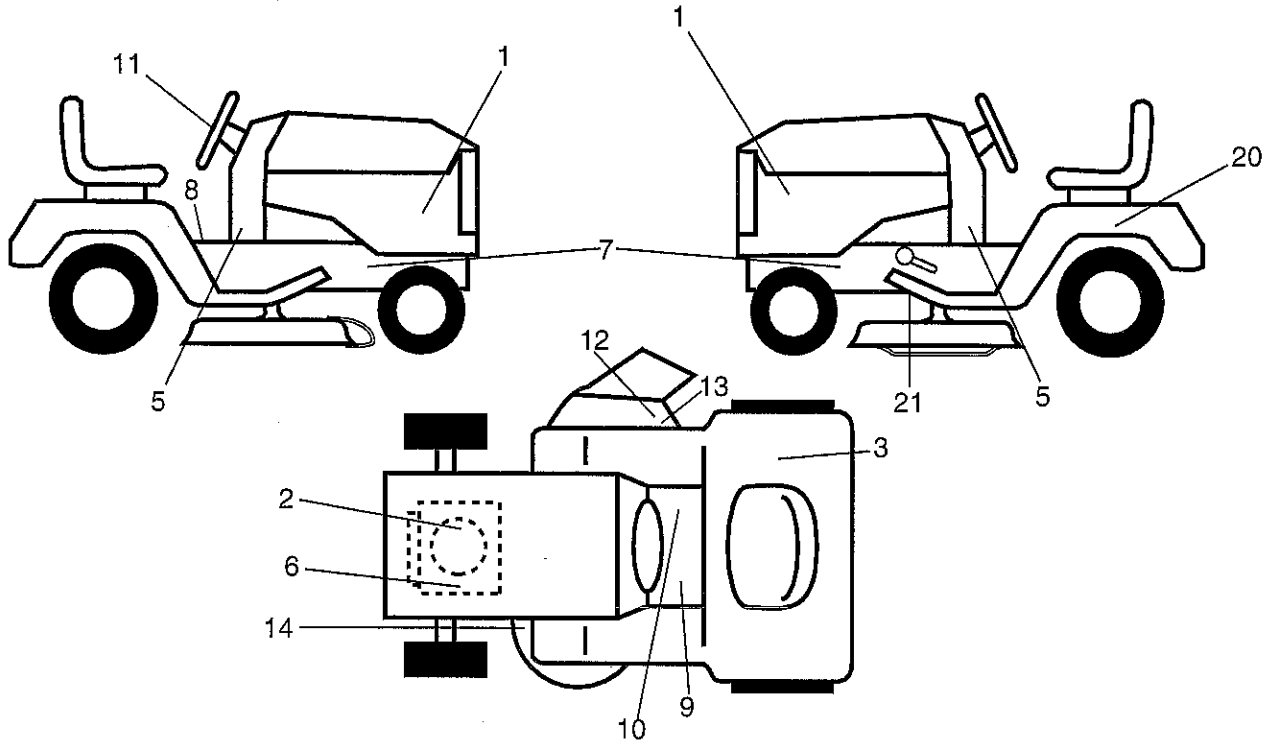
KEY NO.	PART NO.	DESCRIPTION
37	73800500	Nut, Lock 5/16-18 unc
40	197661	Handle Slide
41	198200	Spring Latch
43	74760612	Bolt 3/8-16 unc x 3/4
44	19133812	Washer 13/32 x 2 3/8 x 12 Ga.

NOTE: All component dimensions given in U.S. inches.
1 inch = 25.4 mm

REPAIR PARTS

TRACTOR- -MODEL NO. 917.253632

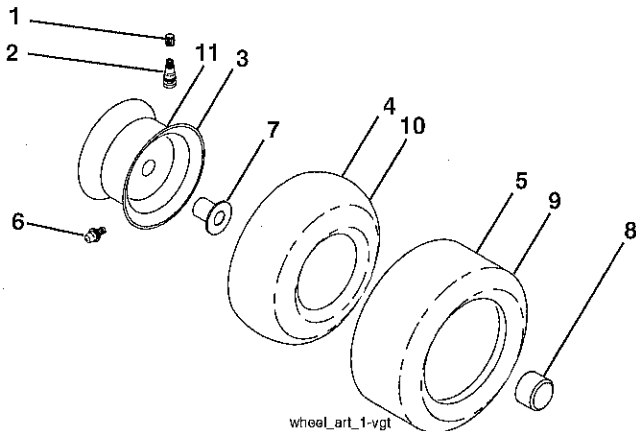
DECALS



KEY NO.	PART NO.	DESCRIPTION
1	433082	Decal Side Panel Logo
2	437417	Decal Eng. H.P.
3	180432	Decal Fender 100 DB/CE
5	425634	Decal Lwr Dash
6	196841	Decal Warning Engine Symbols
7	159736	Decal Chassis Hot Muffler
8	400389	Decal Fender Warn
9	159737	Decal Brake/Clutch Symbols
10	140837	Decal Saddle Brake Parking
11	422885	Decal Ins Strg Whl
12	182166	Decal Cutfinger CE
13	196357	Decal Deflect. Warn. Cutfngr. Sym.

KEY NO.	PART NO.	DESCRIPTION
14	194302	Decal V-Belt Schematic
20	145005	Decal Bat Dan/Psn
21	421534	Decal V-Belt Sch.
--	162598	Decal Drawbar Load Limit
--	193226X428	Pad Footrest LH
--	193227X428	Pad Footrest RH
--	442520	Manual Operator's (Euro)
--	442521	Manual Operator's (Scand)
--	442522	Manual Operator's (Ebloc)
--	442523	Manual Operator's (Baltic)
--	442524	Manual Parts

WHEELS & TIRES



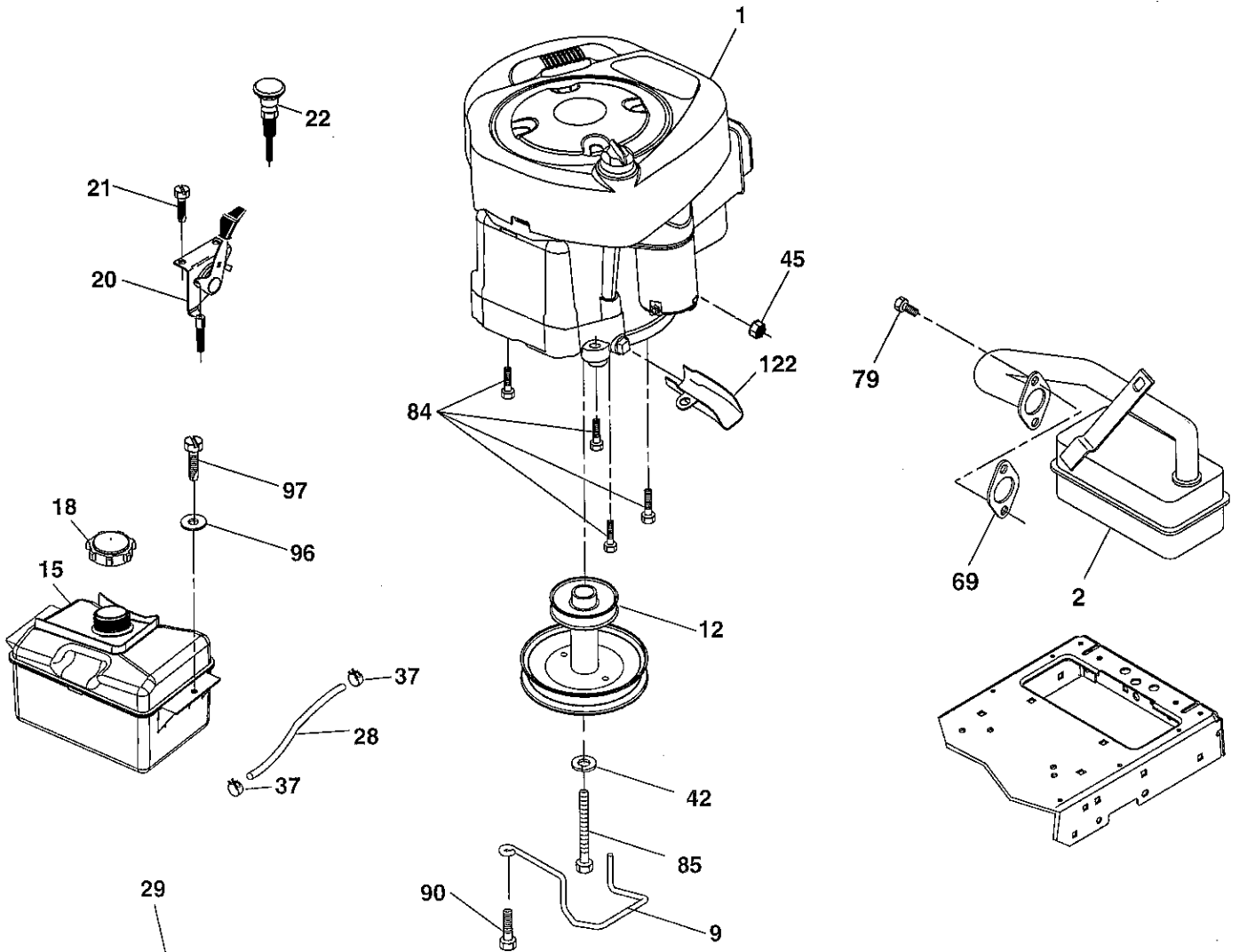
KEY NO.	PART NO.	DESCRIPTION
1	59192	Cap Valve Tire
2	65139	Stem Valve
3	106732X613	Rim Asm 6" Front
4	59904	Tube Front (Service Item Only)
5	106222X	Tire F T 15 x 6 0 - 6
6	278H	Fitting Grease (Front Wheel Only)
7	9040H	Bearing Flange (Front Wheel Only)
8	104757X428	Cap Axle Blk 1 50 x 1 00
9	420531	Tire R T 18 x 9.5-8C
10	7152J	Tube Rear (Service Item Only)
11	106108X613	Rim Asm 8" Rear Service
--	144334	Sealant, Tire (10 oz. Tube)

NOTE: All component dimensions given in U.S. inches
1 inch = 25.4 mm

REPAIR PARTS

TRACTOR- -MODEL NO. 917.253632

ENGINE



OPTIONAL EQUIPMENT
Spark Arrester

engine-tex_BS_35

REPAIR PARTS

TRACTOR- -MODEL NO. 917.253632

ENGINE

KEY NO.	PART NO.	DESCRIPTION
1	438592	Engine B&S Model No. 31C707-2429-B1 (See Transaxle Breakdown)
2	137352	Muffler
9	194319	Keeper Belt Engine
12	401985	Pulley Engine
15	407545	Tank Fuel 1.50
18	430220	Cap Asm
20	176636X428	Control Throttle
21	416358	Screw #10 x 0.750
22	187771X428	Control Choke
28	137040	Fuel Line
29	137180	Spark Arrester Kit
37	123487X	Clamp Hose
42	10040700	Washer Lock 7/16
45	73510400	Nut Keps Hex 1/4-20 unc
69	165291	Gasket
79	192334	Screw Socket Hd 5/16-18 x .75
84	17060620	Screw 3/8-16 x 1-1/4
85	173937	Bolt Hex 7/16-20 x 4 x Gr. 5-1.5
90	17000616	Screw 3/8-16 x 1.0
96	19091416	Washer 9/32 x 7/8 x 16 Ga.
97	17670412	Screw 1/4-20 x 3/4
122	421922	Extension Drain Oil

NOTE: All component dimensions given in U.S. inches
1 inch = 25.4 mm

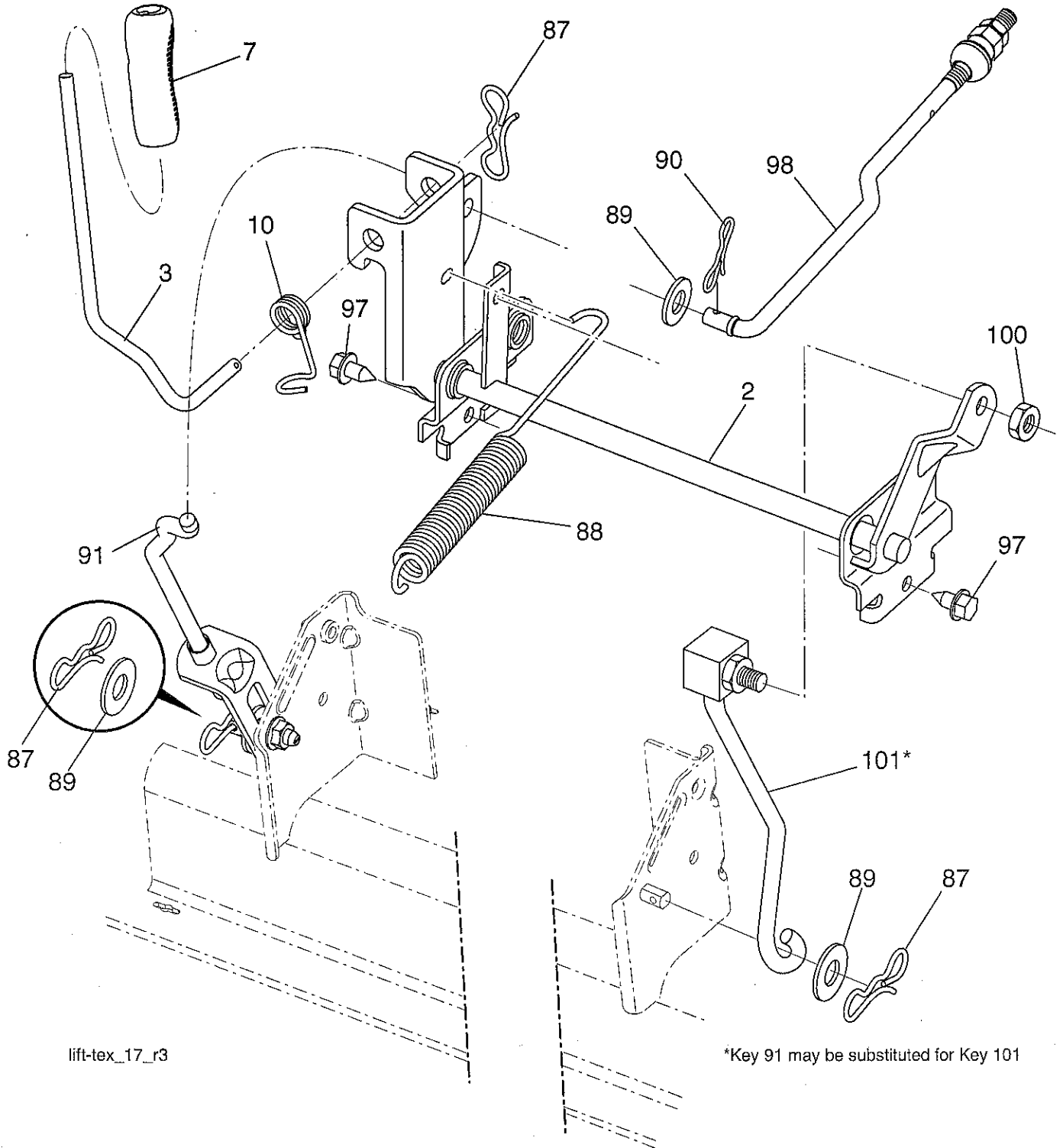
Engine Power Rating Information

The gross power rating for individual gas engine models is labeled in accordance with SAE (Society of Automotive Engineers) code J1940 (Small Engine Power & Torque Rating Procedure), and rating performance has been obtained and corrected in accordance with SAE J1995 (Revision 2002-05). Torque values are derived at 3060 RPM; horsepower values are derived at 3600 RPM. Actual gross engine power will be lower and is affected by, among other things, ambient operating conditions and engine-to-engine variability. Given both the wide array of products on which engines are placed and the variety of environmental issues applicable to operating the equipment, the gas engine will not develop the rated gross power when used in a given piece of power equipment (actual "on-site" or net power). This difference is due to a variety of factors including, but not limited to, accessories (air cleaner, exhaust, charging, cooling, carburetor, fuel pump, etc.), application limitations, ambient operating conditions (temperature, humidity, altitude), and engine-to-engine variability. Due to manufacturing and capacity limitations, Briggs & Stratton may substitute an engine of higher rated power for this Series engine.

REPAIR PARTS

TRACTOR- -MODEL NO. 917.253632

MOWER LIFT



lift-tex_17_r3

*Key 91 may be substituted for Key 101

REPAIR PARTS

TRACTOR- -MODEL NO. 917.253632

MOWER LIFT

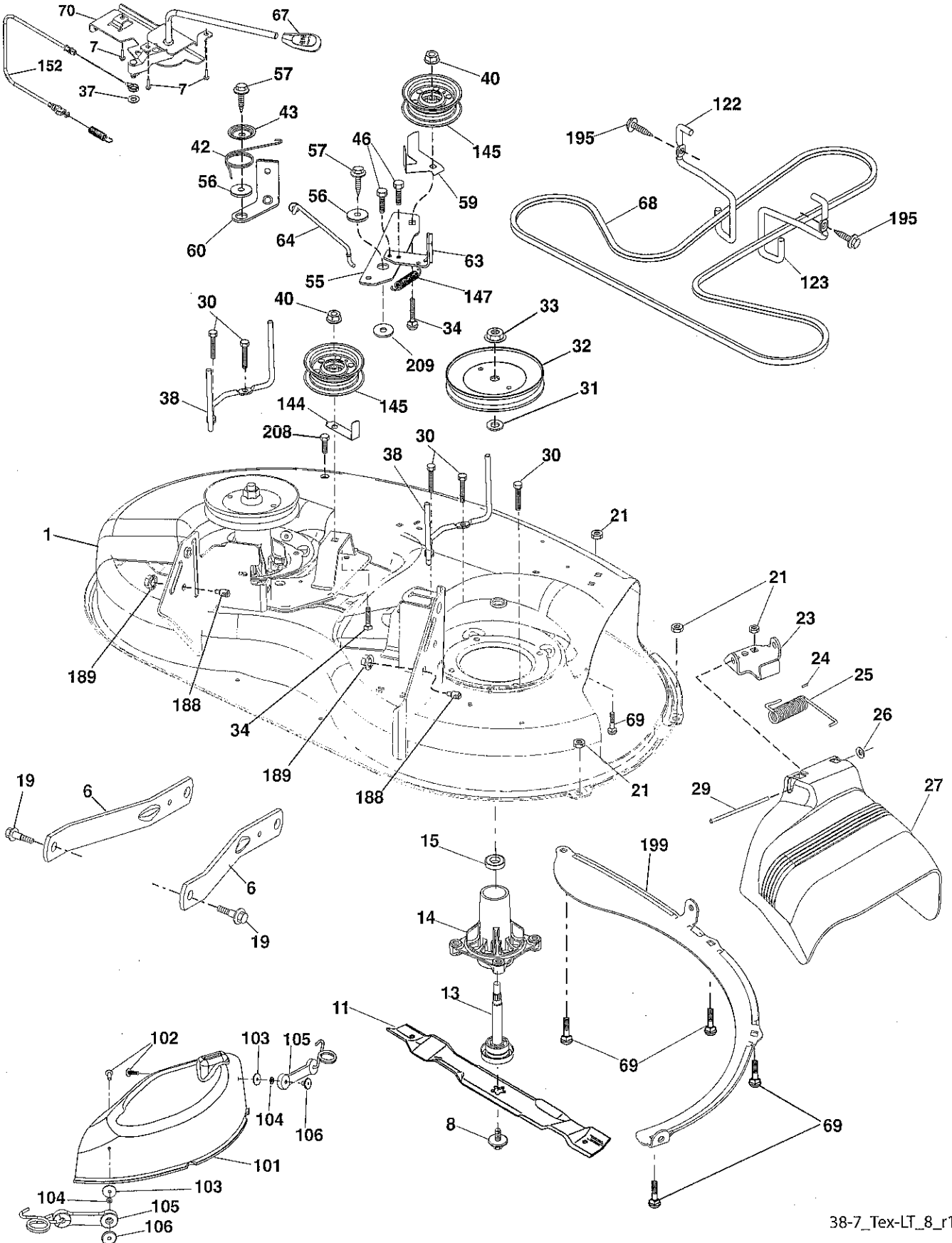
KEY NO.	PART NO.	DESCRIPTION
2	422027	Shaft Asm., Lift
3	195231	Lever Asm., Lift RH
7	196492X428	Grip, Lever
10	196314	Spring Torsion
87	194209	Pin Cotter 7/16 Bow Tie Lock
88	410710	Spring Lift Assist
89	19191912	Washer Clear Zinc
90	194208	Pin Cotter 5/16 Bow Tie Lock
91	195181	Link Lift Susp Mower Rear
97	17000612	Screw 3/8-16 x .75
98	195270	Link Lift Susp. Front Mower
100	73930600	Nut Centerlock 3/8-16 unc
101	407003	Link Asm. Lift FXD

NOTE: All component dimensions given in U.S. inches
1 inch = 25.4 mm

REPAIR PARTS

TRACTOR- -MODEL NO. 917.253632

MOWER



38-deck mulch plug_1

38-7_Tex-LT_8_r1

REPAIR PARTS

TRACTOR- -MODEL NO. 917.253632

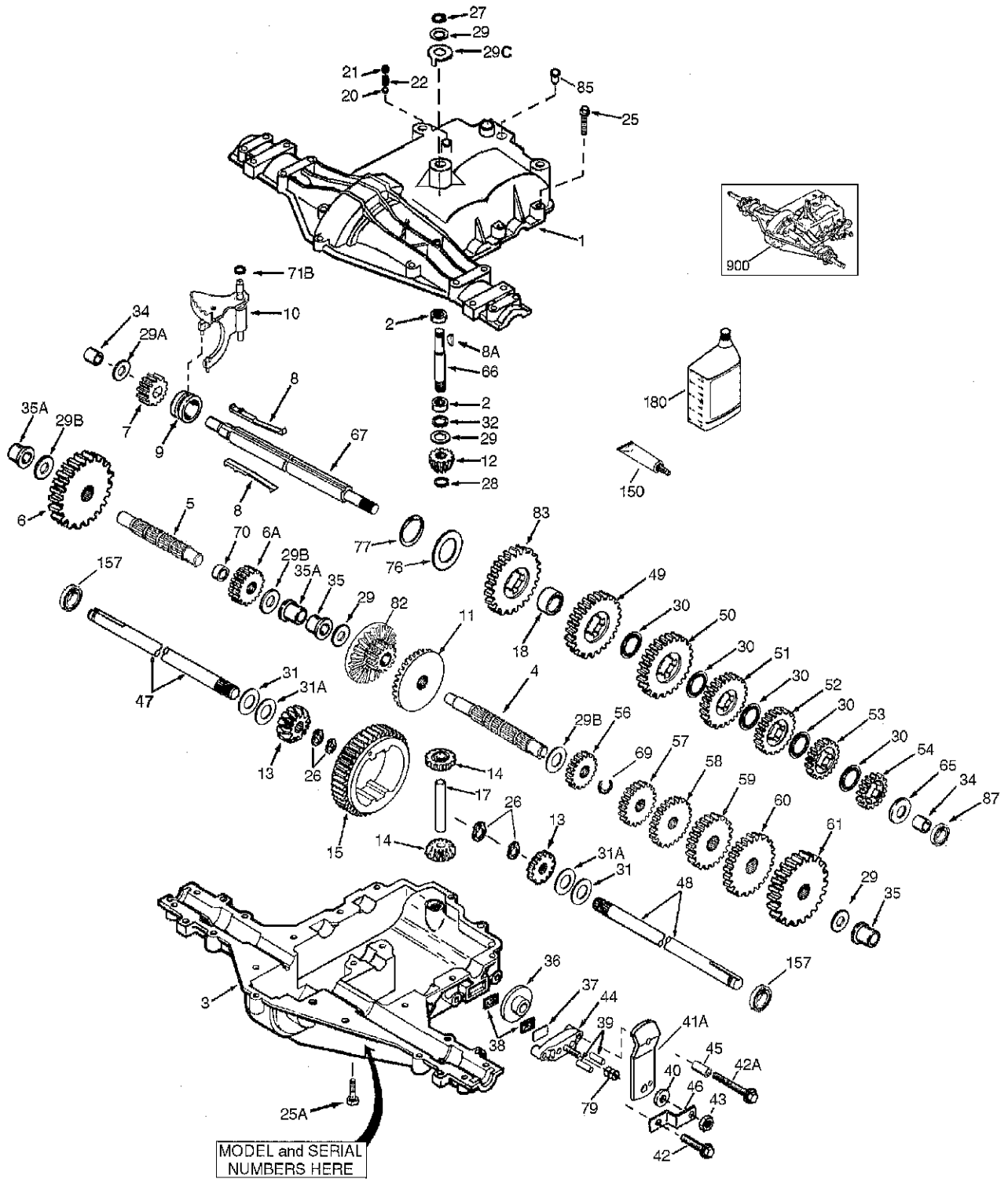
MOWER

KEY NO.	PART NO.	DESCRIPTION	KEY NO.	PART NO.	DESCRIPTION
1	194251	Mower Housing	67	198398X428	Handle, Clutch Cable
6	195186	Arm Suspension	68	408381	V-Belt
7	416358	Screw 10 x .750 BOS Thread	69	72140505	Bolt Rdhd Sqnk 5/16-18 x 5/8
8	193003	Bolt/Washer Asm 7/16-20 unf	70	401246	Clutch Asm. Manual
11	193957	Blade 3 in 1	101	192573	Cover Asm. Mulching 38"
13	192872	Shaft Assembly, Mandrel	102	71081010	Screw Pan HD Phillips 10-24 x 5/8
14	187281	Housing, Mandrel	103	19061216	Washer #10
15	110485X	Bearing, Ball, Mandrel	104	10071000	Washer Lock #10
19	196539	Bolt, Shoulder	105	160793	Latch Asm.
21	73680500	Nut, Crownlock 5/16-18 unc	106	2029J	Nut Weld .327/304 #10 -24
23	192557	Bracket, Deflector	122	197258	Keeper Belt Eng. LH
24	105304X	Cap, Sleeve	123	197259	Keeper Belt Eng. RH
25	197026	Spring, Torsion, Deflector	144	193414	Keeper Belt
26	110452X	Nut, Push	145	193197	Pulley, Idler, Flat
27	199445X428	Shield, Deflector	147	401872	Spring Return
29	131491	Rod, Hinge	152	435111	Cable Clutch Manual w/Spr.
30	173984	Screw Thdrol Rolling Wsh Hd	188	195161	Stud Fastener
31	187690	Washer, Spacer	189	73900500	Nut Lock Hex Flange
32	199789	Pulley, Mandrel	195	17000612	Screw Hexwsh Thdr 3/8-16 x 3/4
33	400234	Nut, Toplock, Flanged	199	400095	Baffle, Vortex
34	72110612	Bolt Carr Sh. 3/8-16 x 1-1/2 Gr. 5	208	17670608	Screw Thdrol 3/8-16 x 1/2
37	19131316	Washer 13/32 x 13/16 x 16 Ga.	209	19133210	Washer 13/32 x 2 x 10 Ga.
38	199541	Keeper Belt LH Mandrel	--	192870	Mandrel Assembly (Mandrel Assembly (Includes housing, shaft assembly, and bearing only - pulley/ nut/washer and blade bolt/washers not included)
40	73900600	Nut, Lock Fig. 3/8-16 unc	--	400422	Replacement Mower, Complete
42	198410	Spring Torsion Brake			
43	197256	Spring Torsion Retainer			
46	137729	Screw Thd Roll 1/4-20 x 5/8			
55	197249	Arm, Idler			
56	199092	Spacer, Retainer			
57	17000616	Screw Hexwsh Thd 3/8-16 x 1			
59	141043	Guard, Tuv Idler (94)			
60	199471	Arm Brake Mower			
63	199470	Arm Brake Mower			
64	199790	Linkage Brake			

NOTE: All component dimensions given in U.S. inches
1 inch = 25.4 mm

TRACTOR - - MODEL NUMBER 917.253632

PEERLESS TRANSAXLE - MODEL NUMBER 206-565



TRACTOR - - MODEL NUMBER 917.253632

PEERLESS TRANSAXLE - MODEL NUMBER 206-565

KEY NO.	PART NO.	DESCRIPTION	KEY NO.	PART NO.	DESCRIPTION
1	772147	Transaxle Cover	42	792073A	Screw 1/4-20 x 1-1/4"
2	780086A	Needle Bearing 5/8"	42A	792085A	Screw 1/4-20 x 2-1/4"
3	770128	Transaxle Case	43	792075	Locknut 5/16-24
4	776395	Countershaft	44	790025	Brake Pad Holder
5	776409	Output Shaft	45	786067	Spacer .2625 x 1.0
6	778364	Spur Gear (38 teeth)	46	786086	Brake Lever Bracket
6A	778369	Spur Gear (15 teeth)	47	774690	Axle (11-15/16" long)
7	778330	Spur Gear (11 teeth)	48	774691	Axle (16-1/2" long)
8	792180	Shift Key	49	778356	Spur Gear (29 teeth)
8A	792047	Woodruff Key #9	50	778338	Spur Gear (27 teeth)
9	784352	Shift Collar	51	778354	Spur Gear (23 teeth)
10	784378	Shift Rod & Fork	52	778313	Spur Gear (19 teeth)
11	778334	Bevel Gear (30 teeth)	53	778350	Spur Gear (16 teeth)
12	778309	Input Bevel Pinion (13 teeth)	54	778346	Spur Gear (15 teeth)
13	778368	Bevel Gear (13 teeth) (Incl. 14)	56	778355	Spur Gear (11 teeth)
14	778368	Bevel Pinion (13 teeth) (Incl. 13)	57	778351	Spur Gear (21 teeth)
15	778370	Ring Gear (43 teeth)	60	778349	Spur Gear (24 teeth)
17	786188	Drive Pin	61	778345	Spur Gear (25 teeth)
18	786102	Spacer 1.130 x .695	65	780189	Flat Washer .563 ID x .062W
20	792077A	Ball 5/16" dia	66	776422	Input Shaft
21	792211	Cap Screw 3/8-16 x 3/8"	67	776396	Shifter & Brake Shaft
22	792079	Spring .310 OD x .625 L	69	792170	Retaining Ring
25	792073A	Screw 1/4-20 x 1-1/4"	70	786187	Spacer .890
25A	792177	Screw 1/4-20 x 1-3/8"	71B	788092	"O" Ring
26	792125	Retaining Ring (pkg of 2)	76	780090	Flat Washer 1.128 ID x .058W
27	792035	Retaining Ring	77	788078A	Inverted Retaining Ring
28	788040	Retaining Ring	79	792144	Spring .430 OD x .5000 L
29	780072	Thrust Washer .627 ID x .031W	82	778333	Bevel & Spur Gear (30 & 13 teeth)
29A	780160	Thrust Washer .563 ID x .031W	83	778338	Spur Gear (27 teeth)
29B	780051	Thrust Washer .762 ID x .031W	85	792154	Oil Fill Plug
29C	780199	Anti-Rotation Washer .632	87	788089A	Oil Seal 9/16"
30	780108	Cup Washer 1.127 ID x .032W	150	788093A	Liquid Gasket RTV Silicone
31	780001	Flat Washer .750 ID x .056W (Use As Needed)	157	788088A	Oil Seal 3/4"
31A	780195	Flat Washer .750 ID x .062W	180	730229A	Gear Oil 80W90
32	788083	Oil Seal 5/8"	900	794691	Replacement MST-206-545C Transaxle
34	780194	Bushing .563	900	--	Remove: 790079 Brake Lever
35	780193	Flanged Bushing 5/8" ID	900	---	Add: 790058 Brake Lever
35A	780197	Flanged Bushing .751			
36	790075	Brake Disk			
37	790007	Brake Pad Plate			
38	799021	Brake Pad (pkg of 2)			
39	786026	Dowel Pin			
40	792076A	Flat Washer .312 ID x .059W			
41A	790058	Brake Lever			

NOTE: All component dimensions given in U.S. inches
1 inch = 25.4 mm

REPAIR PARTS

TRACTOR- -MODEL NO. 917.253632

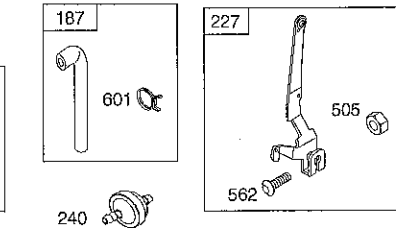
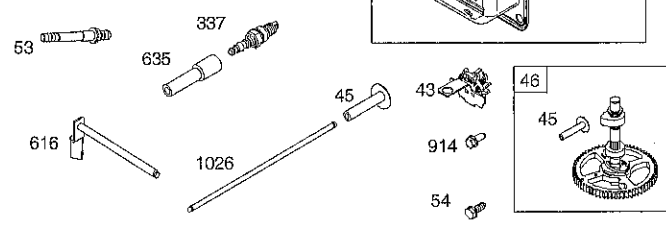
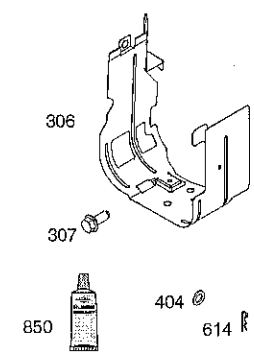
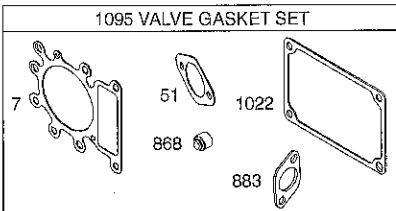
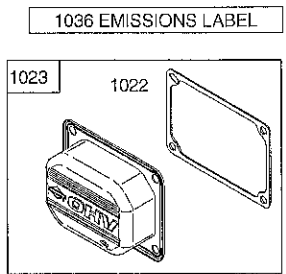
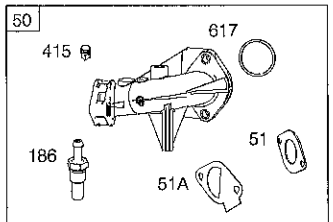
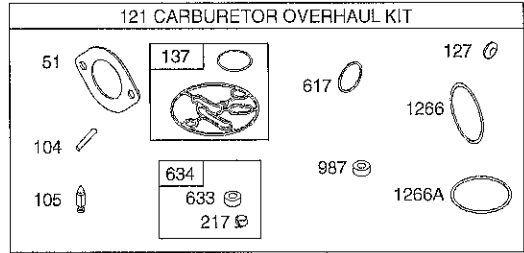
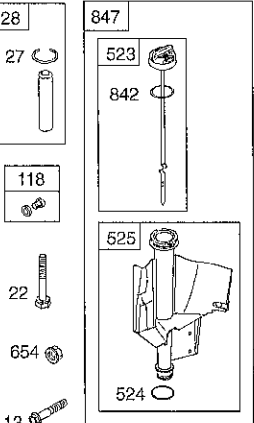
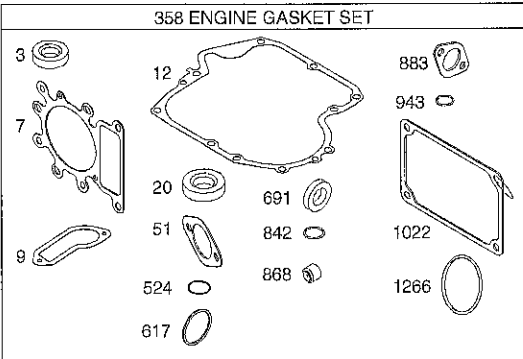
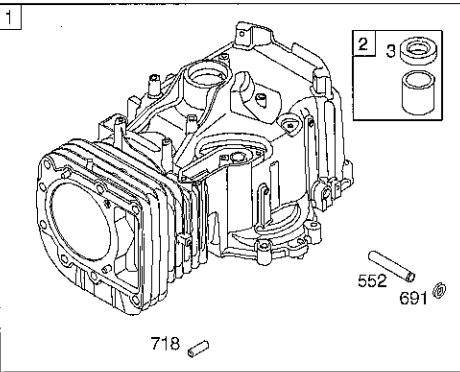
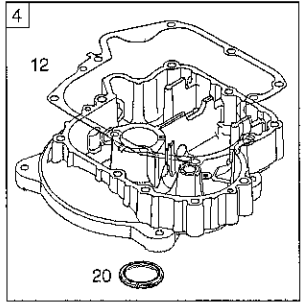
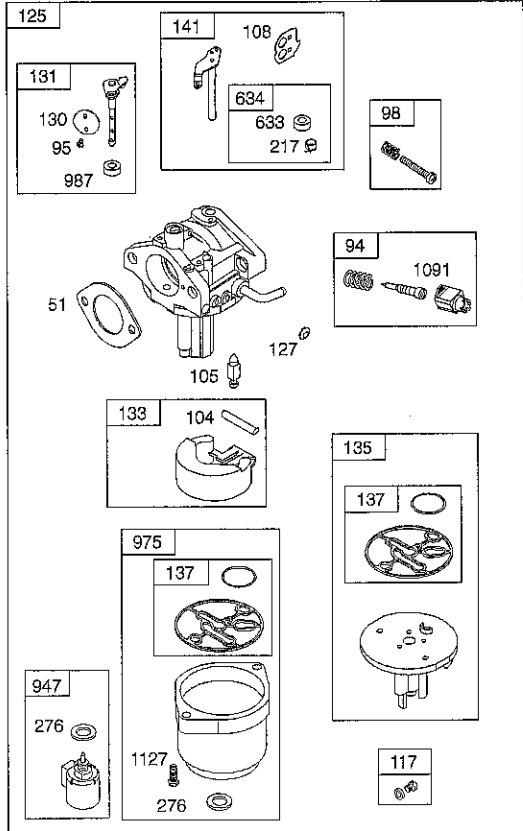
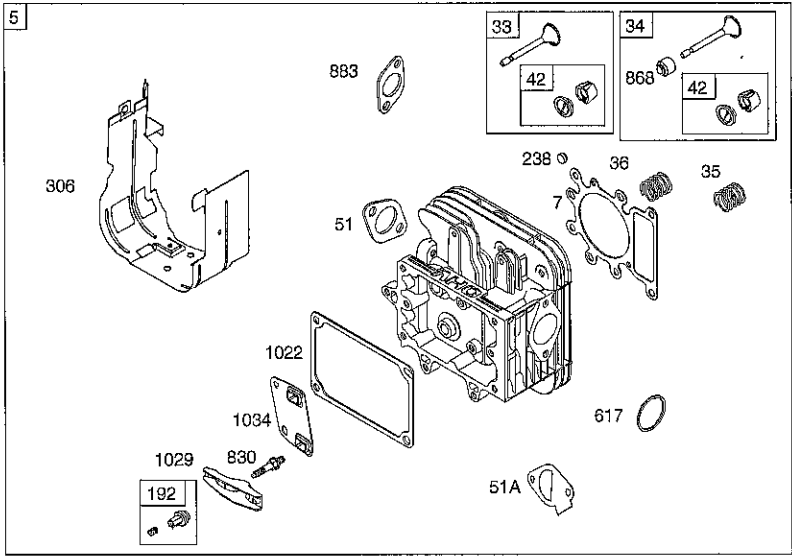
BRIGGS & STRATTON ENGINE - - MODEL NUMBER 31C707, TYPE NUMBER 2429-B1

48 SHORT BLOCK

1036 EMISSIONS LABEL

1058 OPERATOR'S MANUAL

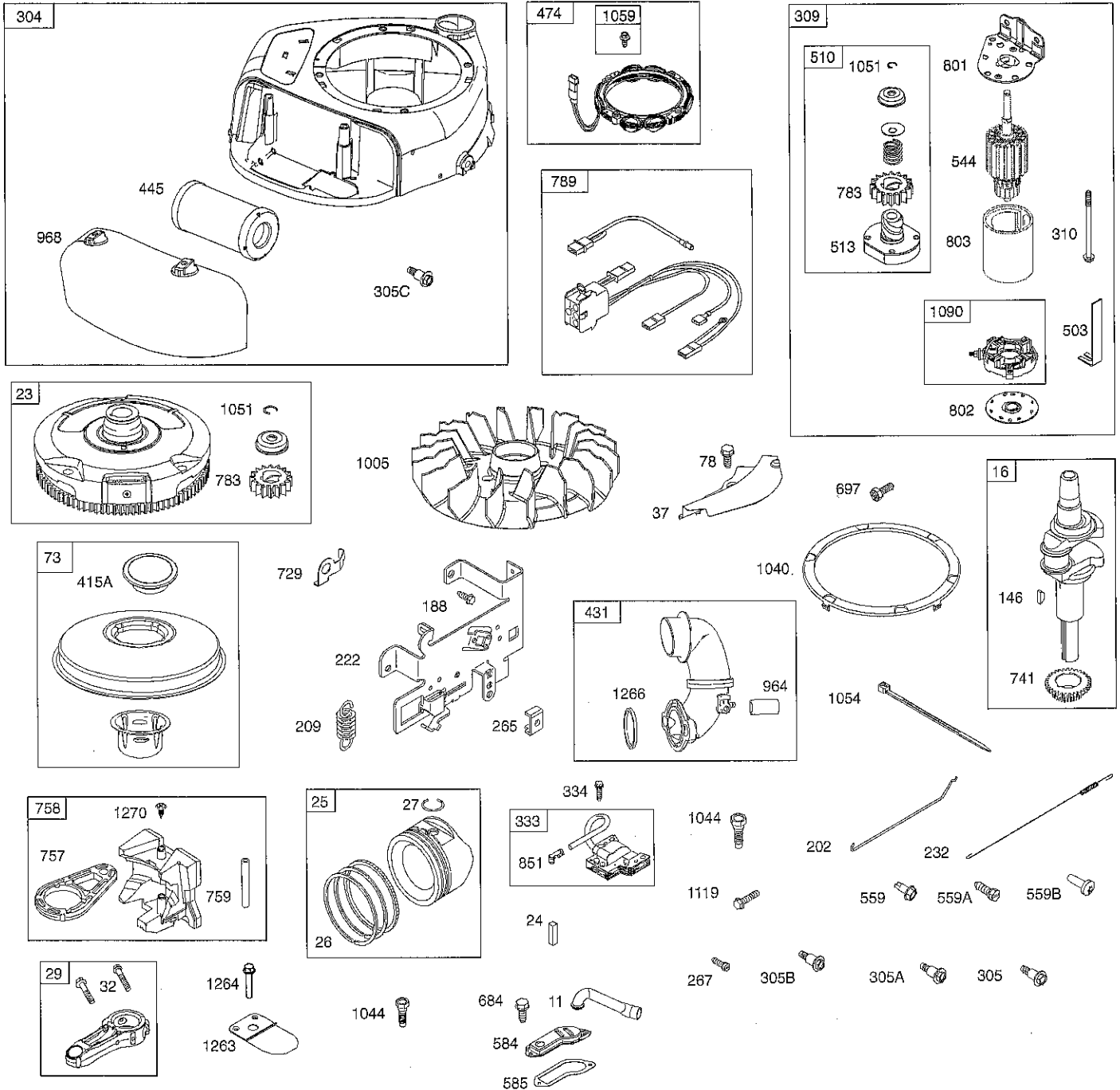
1329 REPLACEMENT ENGINE



REPAIR PARTS

TRACTOR- -MODEL NO. 917.253632

BRIGGS & STRATTON ENGINE - - MODEL NUMBER 31C707, TYPE NUMBER 2429-B1



REPAIR PARTS

TRACTOR- -MODEL NO. 917.253632

BRIGGS & STRATTON ENGINE - - MODEL NUMBER 31C707, TYPE NUMBER 2429-B1

KEY NO.	PART NO.	DESCRIPTION	KEY NO.	PART NO.	DESCRIPTION
1	793564	Cylinder Assembly	131	499805	Kit-Throttle Shaft
2	797673	Bushing/Seal Kit (Magneto Side)	133	699724	Float-Carburetor
3	391086s	Seal-Oil (Magneto Side)	135	699729	Tube-Fuel Transfer
4	796307	Sump-Engine	137	690994	Gasket-Float Bowl
5	796231	Head-Cylinder (Cylinder 1)	141	796228	Kit-Choke Shaft
5A	796232	Head-Cylinder (Cylinder 2)	142	699726	Nozzle-Carburetor
7	693997	Gasket-Cylinder Head	146	690979	Key-Timing
8	792185	Breather Assembly	150	690995	Gasket-Nozzle
9	690937	Gasket-Breather	163	691001	Gasket-Air Cleaner
10	697551	Screw (Breather Assembly)	186A	799158	Hose-Connector (EVAP System)
11	792184	Tube-Breather	186B	845141	Hose-Connector (EVAP System)
12	697227	Gasket-Crankcase	186C	795985	Hose-Connector (Intake Manifold)
13	793988	Screw (Cylinder Head)	187	791766	Line-Fuel (Cut to Required Length)
15	690946	Plug-Oil Drain	188	697551	Screw (Control Bracket)
16	796237	Crankshaft	192	690083	Adjuster-Rocker Arm
20	795387	Seal-Oil (PTO Side)	197	697820	Screw (Back Plate)
22	694966	Screw (Crankcase Cover/Sump)	209	799169	Spring-Governor (Dark Blue)
23	691053	Flywheel	211	691019	Spring-Governed Idle (No Color)
24	222698s	Key-Flywheel	212	695238	Link-Throttle
25	792023	Piston Assembly (Standard)	216	796229	Link-Choke
	792072	Piston Assembly (.020" Oversize)	217	695409	Spring-Choke Return
26	792026	Ring Set (Standard)	219	793338	Gear-Governor
	792073	Ring Set (.020" Oversize)	220	690412	Washer (Governor Gear)
27	690975	Lock-Piston Pin	221	841026	Cup-Governor
28	696581	Pin-Piston	222	798915	Bracket-Control
29	796209	Rod-Connecting	227	798856	Lever-Governor Control
32	690976	Screw (Connecting Rod)	231	690718	Screw (Choke Valve)
33	697576	Valve-Exhaust	240	691035	Filter-Fuel
34	792200	Valve-Intake	250	690957	Retainer-Breather
35	694865	Spring-Valve (Intake)	252	794389	Collector-Oil
36	694865	Spring-Valve (Exhaust)	265	691024	Clamp-Casing
42	499586	Keeper-Valve	267	792629	Screw (Casing Clamp)
45	690977	Tappet-Valve	276	695410	Washer-Sealing
46	792555	Camshaft	278	792651	Washer (Governor Control Lever)
48	698172	Short Block	287	697551	Screw (Dipstick Tube)
50	695241	Manifold-Intake	304	797406	Housing-Blower
51	795123	Gasket-Intake	305	691005	Screw (Blower Housing) (1/4-20x.68)
51A	690950	Gasket-Intake	305B	790690	Screw (Blower Housing to Intake Elbow) (#10-16x.62)
53	690951	Stud (Carburetor)	306	798855	Shield-Cylinder (Cylinder 2)
54	699816	Screw (Intake Manifold)	306A	796852	Shield-Cylinder (Cylinder 1)
73	494439	Screen-Rotating	307	691003	Screw (Cylinder Shield) (10-24x.43)
74	698425	Screw (Rotating Screen)	307A	697551	Screw (Cylinder Shield) (1/4-20x.66)
75	691056	Washer (Flywheel)	309	497595	Motor-Starter
95	690718	Screw (Throttle Valve)	310	690323	Screw (Starter Motor)
98	699721	Kit-Idle Speed	332	691059	Nut (Flywheel)
104	694918	Pin-Float Hinge	333	691060	Armature-Magneto
105	797410	Valve-Float Needle	334	691061	Screw (Magneto Armature)
108	699723	Valve-Choke	337	691043	Plug-Spark
117	791501	Jet-Main (Standard) (Left Jet)	358	694012	Gasket Set-Engine
117A	791502	Jet-Main (Standard) (Right Jet)	385	797409	Screw (Fuel Pump)
118	695415	Jet-Main (High Altitude) (Left Jet)	387	808656	Pump-Fuel
118A	843099	Jet-Main (High Altitude) (Right Jet)	404	690442	Washer (Governor Crank)
121	797890	Kit-Carburetor Overhaul	415	794903	Plug
125	796258	Carburetor			
130	690993	Valve-Throttle			

REPAIR PARTS

TRACTOR- -MODEL NO. 917.253632

BRIGGS & STRATTON ENGINE - - MODEL NUMBER 31C707, TYPE NUMBER 2429-B1

KEY NO.	PART NO.	DESCRIPTION	KEY NO.	PART NO.	DESCRIPTION
418	795912	Plate-Carburetor	965	796221	Cover-Oil Pump
431	798859	Elbow-Intake	967	273638s	Filter-Pre Cleaner
445	499486	Filter-Air Cleaner Cartridge	968	791242	Cover-Air Cleaner
467	691008	Knob-Air Cleaner	975	798778	Bowl-Fuel
474	696458	Alternator	987	691000	Seal-Throttle Shaft
501	797375	Regulator	1005	791236	Fan-Flywheel
505	691029	Nut (Governor Control Lever)	1012	797926	Retainer-Link
510	696541	Drive-Starter	1013	690954	Nipple-Oil Filter
513	692024	Clutch-Drive	1017	796214	Screen-Oil Pump
523	691036	Dipstick	1022	690971	Gasket-Rocker Cover
524	691032	Seal-Dipstick Tube	1023	793146	Cover-Rocker (Cylinder 1)
525	691037	Tube-Dipstick	1023A	499600	Cover-Rocker (Cylinder 2)
526	697551	Screw (Regulator)	1024	796220	Pump-Oil
552	796638	Bushing-Governor Crank	1026	690981	Rod-Push (Steel) (Exhaust)
552A	690553	Bushing-Governor Crank	1026A	690982	Rod-Push (Aluminum) (Intake)
562	690311	Screw (Governor Control Lever)	1027	492932s	Filter-Oil
573	790444	Plate-Back	1029	690972	Arm-Rocker
601	691038	Hose-Clamp (Black)	1036		Label-Emissions (Available from a Briggs & Stratton Authorized Dealer)
615	698290	Retainer-Governor Shaft	1040	791237	Plate-Trim
616	691045	Crank-Governor	1051	691265	Ring-Retaining
617	697891	Seal-O Ring (Intake Manifold) (Red)	1054	280275	Tie-Cable
633	699813	Seal-Choke/Throttle Shaft (Choke Shaft)	1058	278776TRI	Operator's Manual
634	698779	Spring/Seal Assembly	1059	698516	Kit-Screw/Washer
635	66538s	Boot-Spark Plug	1070	791680	Screw (Flywheel Fan)
654	690958	Nut (Carburetor)	1090	691293	Retainer-Brush
668	691215	Spacer (Rotating Screen)	1095	694013	Gasket Set-Valve
668A	691500	Spacer (Rotating Screen)	1100	791959	Pivot-Rocker Arm
672	690234	Gasket-Carburetor Plate	1119	691183	Screw (Alternator)
691	790574	Seal-Governor Shaft	1124	690988	Seal-O Ring (Fuel Transfer Tube)
697	690372	Screw (Drive Cap)	1124A	841653	Seal-O Ring (Fuel Transfer Tube)
703	691010	Clip	1126	690991	Screw (Fuel Transfer Tube)
718	690959	Pin-Locating	1127	695407	Screw (Float Bowl)
729	797454	Clip-Wire	1128	690990	Screw (Carburetor Nozzle)
741	690980	Gear-Timing	1169	690990	Screw (Carburetor Cover Plate)
742	690328	Retainer-E Ring	1329	44Q777	Replacement Engine
750	796208	Screw (Oil Pump Cover)		-3137-G5	
783	695708	Gear-Pinion	1330	273521	Repair Manual
789	797424	Harness-Wiring			
798	697890	Screw (Rocker Arm)			
801	691283	Cap-Drive			
802	691286	Cap-End			
842	691031	Seal-O Ring (Dipstick)			
847	499602	Dipstick/Tube Assembly			
850	100106	Sealant-Liquid			
851	493880s	Terminal-Spark Plug			
865A	691015	Cover-Air Guide (Valley)			
868	690968	Seal-Valve			
883	690970	Gasket-Exhaust			
914	691127	Screw (Rocker Cover)			
918	797408	Hose-Vacuum			
918A	799160	Hose-Vacuum (EVAP System)			
943	796222	Seal-O Ring (Oil Pump Cover)			
947	798779	Solenoid-Fuel			
964	799159	Cap-Connector			

Engine Gasket Set Key No. 358
 Valve Gasket Set Key No. 1095
 Carburetor Overhaul Kit Key No. 121

LIMITED WARRANTY ON CRAFTSMAN RIDING EQUIPMENT

For two (2) years from the date of purchase, if this Craftsman Riding Equipment is maintained, lubricated and tuned up according to the instructions in the owner's manual, Sears will repair or replace free of charge any parts that are found to be defective in material or workmanship according to the guidelines of coverage listed below. Sears will also provide free labor for these applicable warranted parts for the two full years. During the first 30 days of purchase, there will be no charges to service the product at your home for issues covered by this warranty. (See exclusions below). For your convenience, IN HOME warranty service will still be available after the first 30 days of purchase, but a trip charge will apply. This charge will be waived if the Craftsman product is dropped off at an authorized Sears location. For the nearest authorized Sears location, please call 1-800-4-MY-HOME®. This warranty applies only while this product is within the United States.

This Warranty does not cover:

- Expendable items which become worn during normal use, including but not limited to blades, spark plugs, air cleaners, belts, and oil filters.
- Standard Maintenance Servicing, oil changes, or tune-ups
- Tire replacement or repair caused by punctures from outside objects, such as nails, thorns, stumps, or glass.
- Repairs necessary because of operator abuse, including but not limited to, damage caused by towing objects beyond the capability of the riding equipment, impacting objects that bend the frame or crankshaft, or over-speeding the engine.
- Repairs necessary because of operator negligence, including but not limited to, electrical and mechanical damage caused by improper storage, failure to use the proper grade and amount of engine oil, failure to keep the deck clear of flammable debris, or failure to maintain the equipment according to the instructions contained in the owner's manual.
- Engine (fuel system) cleaning or repairs caused by fuel determined to be contaminated or oxidized (stale). In general, fuel should be used within 30 days of its purchase date.
- Normal deterioration and wear of the exterior finishes, or product label replacement.
- Riding equipment used for commercial or rental purposes.

LIMITED WARRANTY ON BATTERY

For ninety (90) days from date of purchase, if any battery included with this riding equipment proves defective in material or workmanship and our testing determines the battery will not hold a charge, Sears will replace the battery at no charge. During the first 30 days of purchase, there will be no charges to replace the battery at your HOME. After the first 30 days, for your convenience, IN-HOME warranty service will still be available but a trip charge will apply. This charge will be waived if the Craftsman product is dropped off at an authorized Sears location. For the nearest authorized Sears location, please call 1-800-4-MY-HOME®.

This battery warranty applies only while this product is within the United States.

This warranty gives you specific legal rights, and you may also have other rights, which vary, from state to state.

Sears, Roebuck and Co., Dept. 817WA, Hoffman Estates, IL 60179

SERVICE NOTES

