

**REPAIR PARTS MANUAL**  
**MODEL NO. 253654**  
**Lawn Tractor**



# HOW TO USE THIS MANUAL

This manual is designed to provide the customer with a means to identify the parts on his/her tractor when ordering repair parts. The illustrations may or may not represent the actual assemblies; therefore, it is not recommended to use this manual as a guide to assemble or disassemble the tractor. Some hardware and parts are drawn larger in order to more readily identify them.

Each tractor has its own model number.

The model number for your tractor can be found on the fender under the seat.

When ordering parts, always give the following information:

- Product - "Tractor"
- Model Number - "253654"
- Part Number
- Part Description

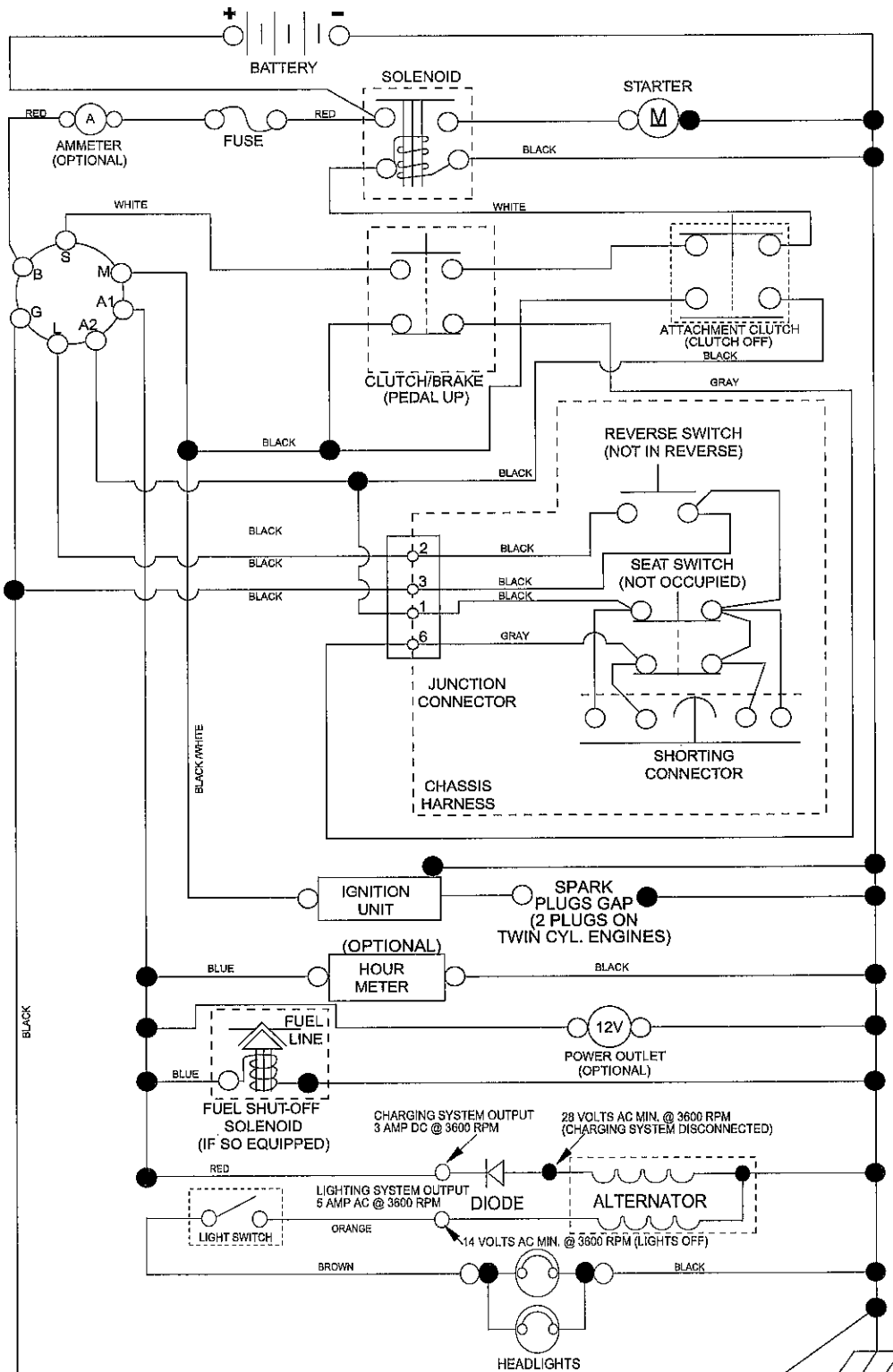
## TABLE OF CONTENTS

<b>SCHEMATIC .....</b>	<b>3</b>
<b>ELECTRICAL.....</b>	<b>4-5</b>
<b>CHASSIS .....</b>	<b>6-7</b>
<b>DRIVE.....</b>	<b>8-9</b>
<b>STEERING .....</b>	<b>10-11</b>
<b>SEAT .....</b>	<b>12</b>
<b>DECALS.....</b>	<b>13</b>
<b>ENGINE.....</b>	<b>14-15</b>
<b>MOWER LIFT.....</b>	<b>16-17</b>
<b>MOWER DECK .....</b>	<b>18-19</b>
<b>TRANSAXLE BREAKDOWN .....</b>	<b>20-21</b>
<b>ENGINE BREAKDOWN.....</b>	<b>22-25</b>
<b>WARRANTY.....</b>	<b>26</b>

# TRACTOR- -MODEL NO. 917.253654

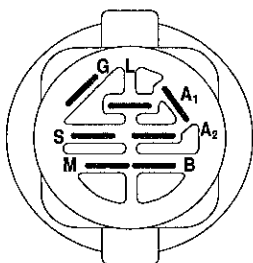
## SCHEMATIC

SCH11



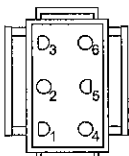
### NOTE

YOUR TRACTOR IS EQUIPPED WITH A SPECIAL ALTERNATOR SYSTEM. THE LIGHTS ARE NOT CONNECTED TO THE BATTERY, BUT HAVE THEIR OWN ELECTRICAL SOURCE. BECAUSE OF THIS, THE BRIGHTNESS OF THE LIGHTS WILL CHANGE WITH ENGINE SPEED. AT IDLE THE LIGHTS WILL DIM. AS THE ENGINE IS SPEEDED UP, THE LIGHTS WILL BECOME THEIR BRIGHTEST.

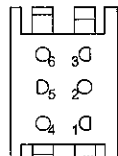


IGNITION SWITCH

POSITION	CIRCUIT	"MAKE"
OFF	M+G+A1	
RUN/OVERRIDE	B+A1	
RUN	B+A1	L+A2
START	B + S + A1	



CHASSIS HARNESS CONNECTOR (MATING SIDE)



DASH HARNESS CONNECTOR (MATING SIDE)

WIRING INSULATED CLIPS  
NOTE: IF WIRING INSULATED CLIPS WERE REMOVED FOR SERVICING OF UNIT, THEY SHOULD BE RE-INSTALLED TO PROPERLY SECURE YOUR WIRING.

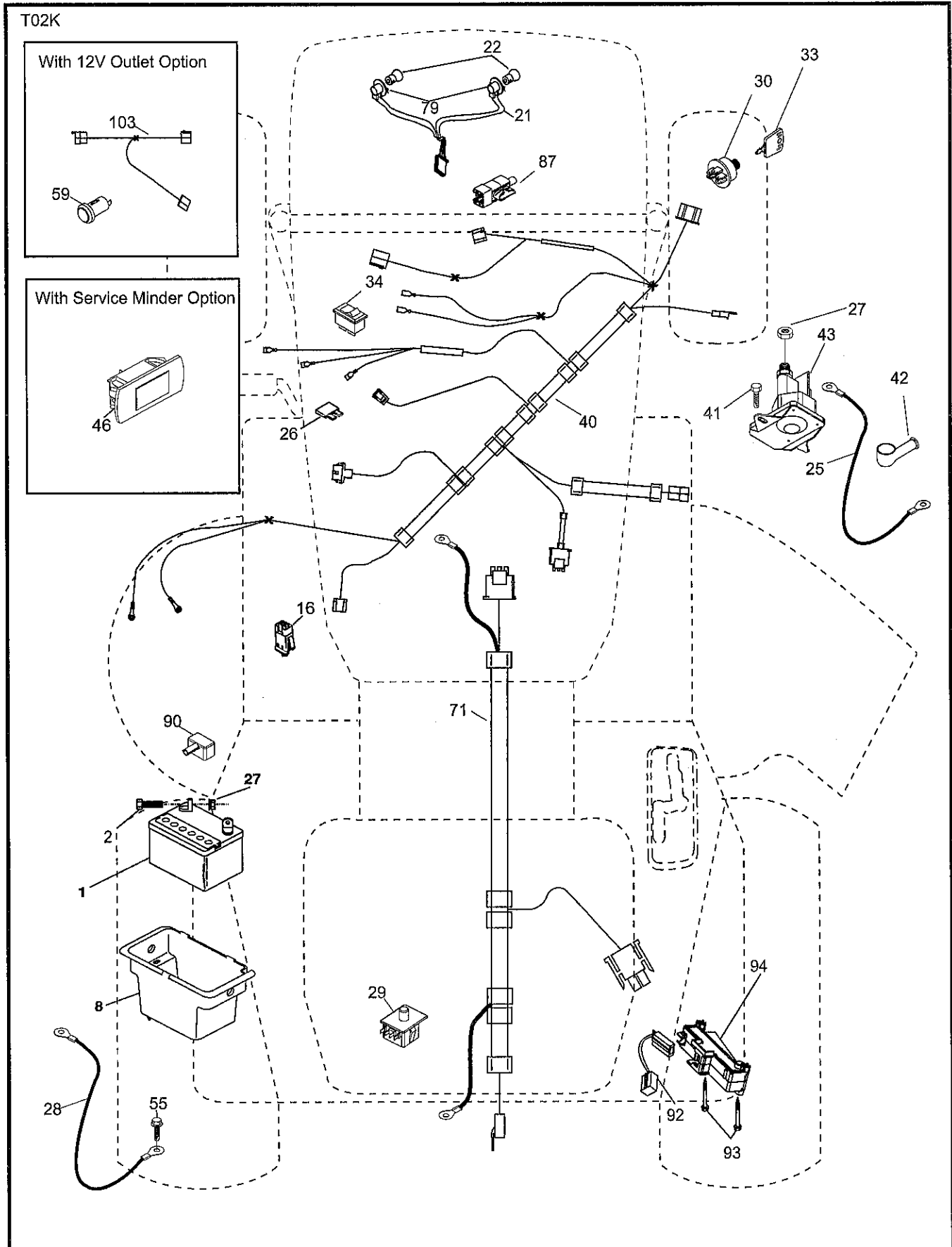
NON-REMOVABLE CONNECTIONS

REMOVABLE CONNECTIONS

# REPAIR PARTS

TRACTOR- -MODEL NO. 917.253654

## ELECTRICAL



# REPAIR PARTS

TRACTOR- -MODEL NO. 917.253654

## ELECTRICAL

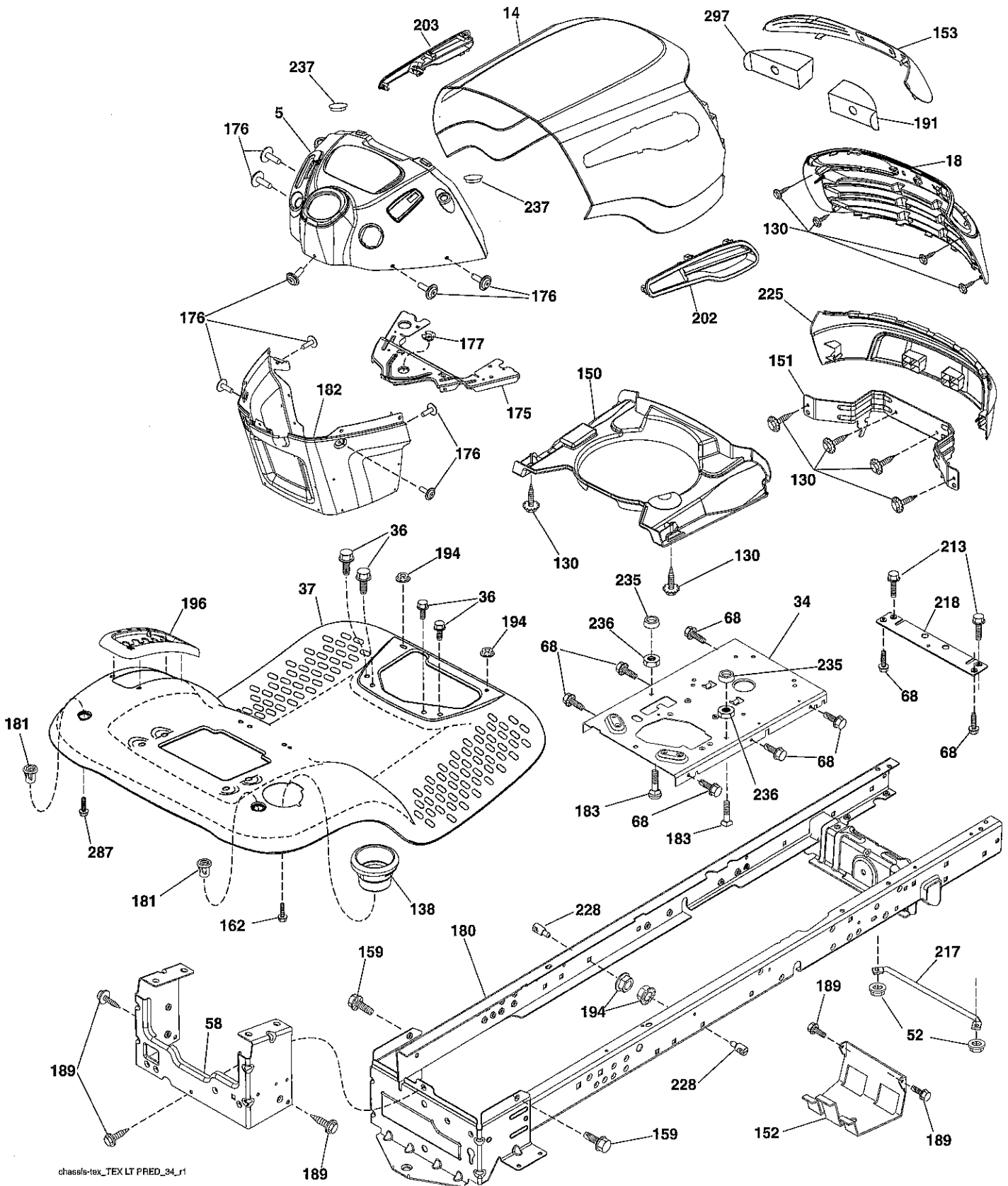
KEY NO.	PART NO.	DESCRIPTION
1	163465	Battery
2	74760412	Bolt Hex Hd 1/4-20 unc x 3/4
8	193228	Box Battery
16	176138	Switch Interlock Push-In
21	400252	Harness Socket Light w/4152J
22	4152J	Bulb Light
25	412894	Cable Starter
26	175158	Fuse
27	73510400	Nut Keps Hex 1/4-20 unc
28	198885	Cable, Ground
29	401545	Switch, Seat
30	193350	Switch, Ign
33	411934	Key/Chain
34	110712X	Switch Light / Reset
40	401098	Harness Ign. Dash
41	17720408	Screw Thd Cut 1/4-20 x 1/2
42	131563	Cover, Terminal
43	192507	Solenoid
55	17060512	Screw Thdrol 5/16-18 x 3/4 TYTT
71	400449	Harness Ign. Chassis
79	175242	Bulbholder Asm. Incan Descent
87	197802	Switch Interlock Clutch Cable
90	435395	Cover Terminal Battery
92	196615	Harness Pigtail Reverse Switch
93	192540	Screw Plastite 10 - 14 x 2 00
94	191834	Module Reverse Ros

**NOTE:** All component dimensions given in U.S. inches.  
1 inch = 25.4 mm.

# REPAIR PARTS

TRACTOR- -MODEL NO. 917.253654

## CHASSIS AND ENCLOSURES



chassis-tex\_TEX LT PRED\_34\_r1

# REPAIR PARTS

## TRACTOR- -MODEL NO. 917.253654

### CHASSIS AND ENCLOSURES

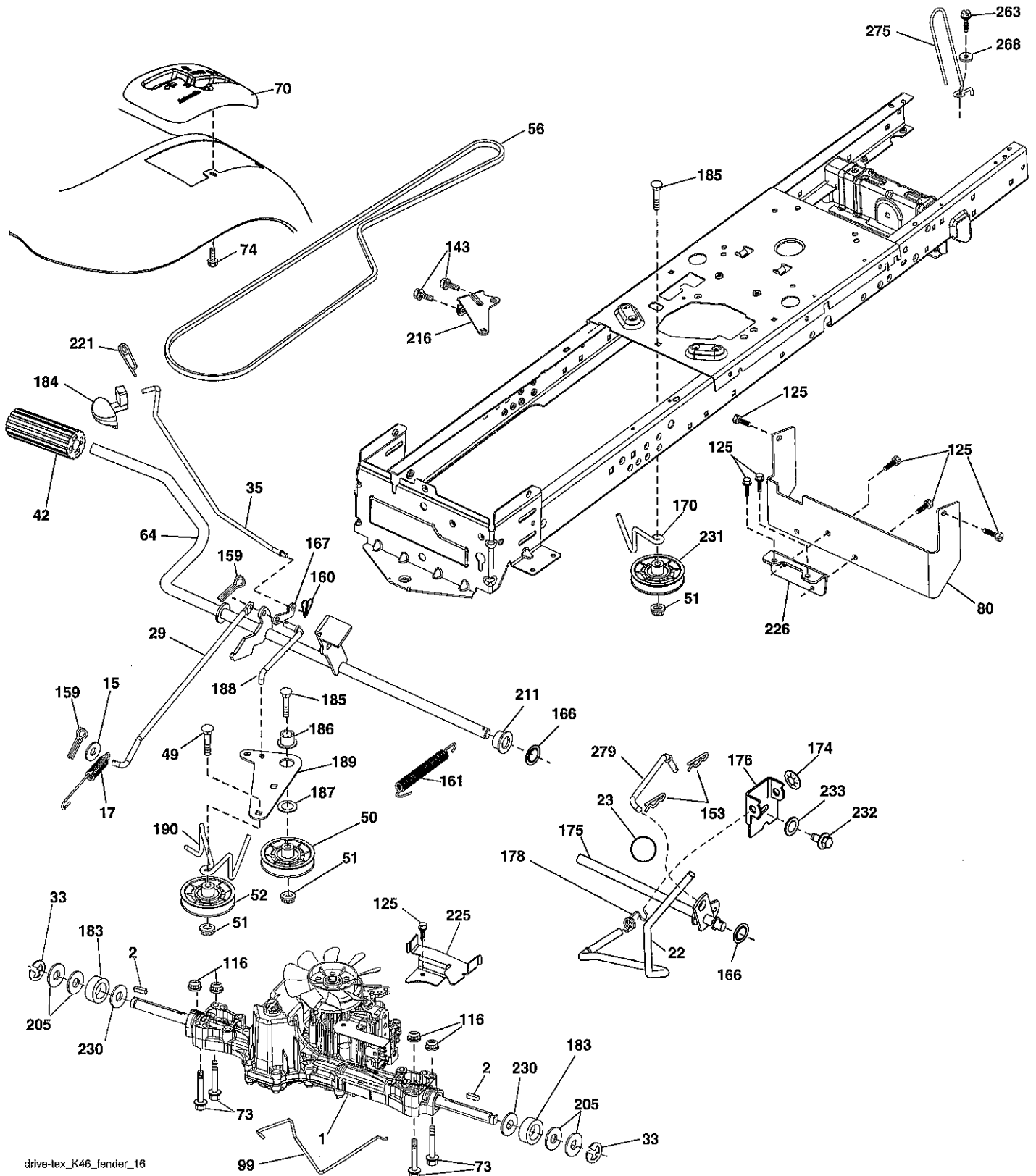
KEY NO.	PART NO.	DESCRIPTION
5	408874X428	Dash
14	198416X613	Hood
18	423156	Grille
34	196125	Plate Engine
36	17060512	Screw 5/16-18 x 3/4
37	414872X613	Fender
52	73680500	Nut Crown Lock 5/16-18
58	412280	Drawbar Upper
68	17490508	Screw Thdrol 5/16-18 x 1/2
130	416358	Screw #10 x 0.750
138	193224X428	Cupholder
150	400267	Duct Heat Hood
151	187568	Bracket Pivot
152	199535	Shield Browning/Debris
153	400550X599	Lens
159	17000612	Screw Hexwsh Thdrol 3/8-16 x 3/4
162	142432	Screw Hex Wsh Hi-Lo 1/4 x 1/2
175	199472	Crossmember
176	400776	Screw 10-24 x 5/8 Wshd Qdrx
177	195228	Bushing Steering
180	415063	Chassis
181	193102X428	Bushing Mtg. Fender Crgo.
182	407176	Dash Lower
183	74520520	Bolt Full Thd 5/16-18 x 1-1/4
189	17000512	Screw 5/16-18 x 3/4.
191	416502	Insert Reflective RH
194	73900500	Nut Lock Hex Flange 5/16-18
196	414579	Console Asm. Deck Lift
202	423173	Vent Hood Side Panel RH
203	423172	Vent Hood Side Panel LH
213	74760512	Bolt Hex Hd 5/16-18 unc x 3/4
217	409167	Rod Pivot Hood
218	196395	X-Piece Hood Stop
225	400549X613	Bumper
228	195161	Stud Fastener
235	406129	Spacer Fender
236	73930500	Nut Center Lock 5/16-18
237	403704	Plug Mount Cargo
287	17600406	Screw 1/4-20 x 3/8
297	401827	Insert Reflective LH

**NOTE:** All component dimensions given in U.S. inches.  
1 inch = 25.4 mm.

# REPAIR PARTS

TRACTOR- -MODEL NO. 917.253654

## DRIVE



drive-tex\_K46\_fender\_16



# REPAIR PARTS

## TRACTOR- -MODEL NO. 917.253654

### DRIVE

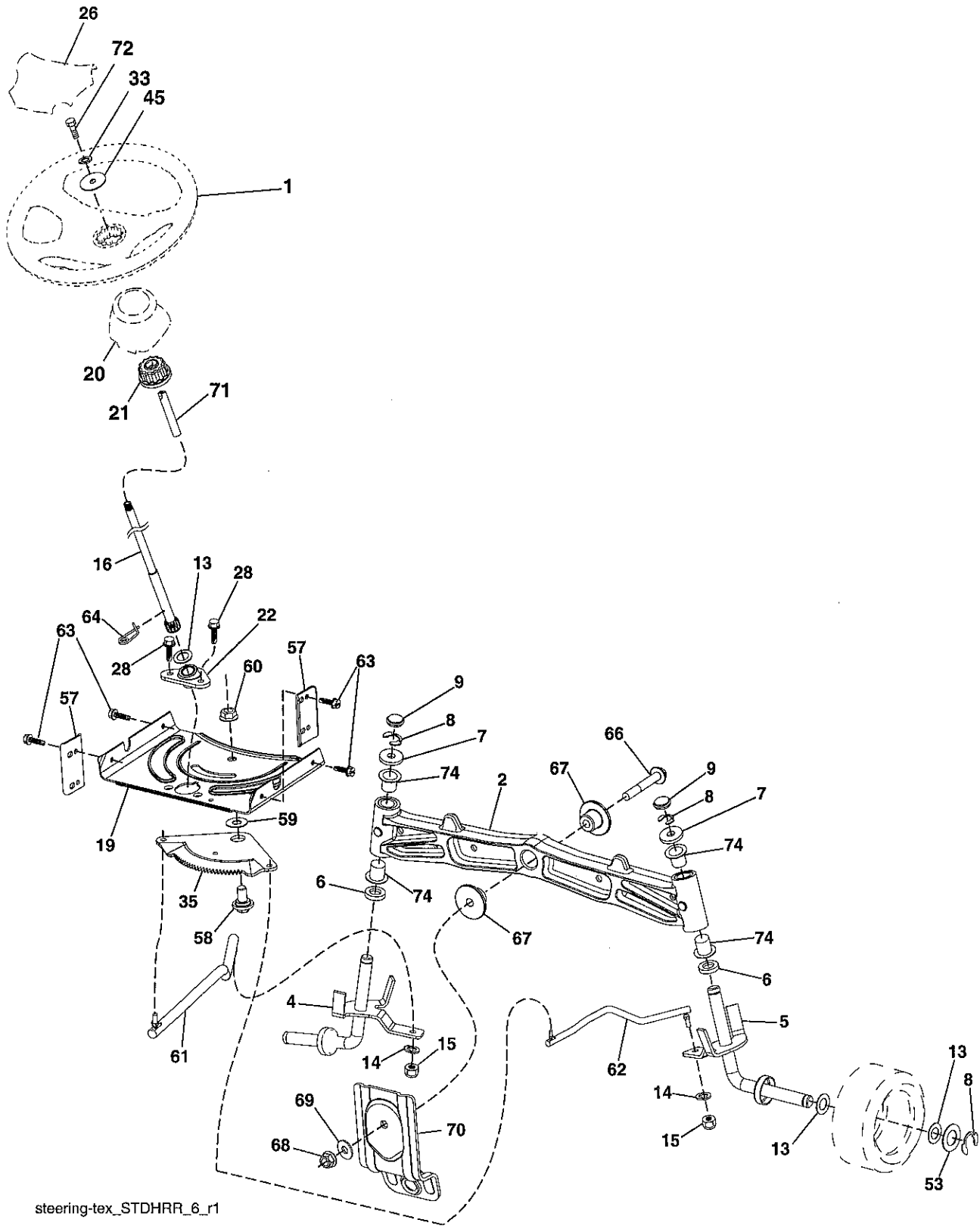
KEY NO.	PART NO.	DESCRIPTION	KEY NO.	PART NO.	DESCRIPTION
1	408214	Transaxle Tufftorq K46BA (See Transaxle Breakdown)	170	413430	Keeper V-Idler
2	123583X	Key Square	174	197289	Nut Push
15	19131316	Washer 13/32 x 13/16 x 16 Ga.	175	406208	Shaft Asm Shift
17	413678	Spring, Brake	176	196214	Arm Clevis Rod Shift
22	197660	Rod Shift	178	197456	Spring Shift
23	106933X	Knob	183	137057	Spacer Axle
29	403806	Rod, Brake	184	199996X667	Handle Parking Brake
33	12000001	Ring E	185	72110622	Bolt
35	401031	Rod, Brake, Park Control	186	194321	Spacer Retainer
42	8883R	Cover, Foot Pedal	187	19133210	Washer
49	72110614	Bolt	188	194323	Link Clutch Ground Drive
50	194327	Pulley Idler Flat	189	194317	Bellcrank Ground Drive
51	73900600	Lock Nut 3/8-16	190	194318	Keeper Bellcrank Ground Drive
52	194326	Idler V-Groove 910" Offset	205	121748X	Washer 25/32 x 1-5/8 x 16 Ga.
56	130969	V-Belt, Drive	211	196212	Bushing
64	196200	Shaft Asm. Pedal Brake Control	216	196131	Bracket Pulley Idler
70	193220X428	Console	221	403187	Retainer Spring Clip Handle
73	74490540	Bolt Hex 5/16-18 Gr. 5	225	403319	Keeper Belt Transaxle
74	142432	Screw 1/4 x 1/2	226	401564	Bracket Mount Torque
80	440619	Strap Torque	230	188967	Washer Harden .793 x 1.637
99	415742	Rod Spring Bypass	231	407287	Idler V-Groove 1.688" Offset
116	73900500	Nut Lock Hex Flange 5/16-18	232	74780716	Bolt 7/16-14 x 1 Gr. 5
125	17000512	Screw 5/16-18 x 3/4	233	405296	Washer Serrated
143	17490508	Screw Thdrol 5/16-18 x 1/2	263	17000612	Screw Hexwsh Thdr 3/8-16 x 3/4
153	4497H	Retainer Spring 1"	268	19131614	Washer 13/32 x 1 x 14 Ga.
159	76020412	Pin Cotter 1/8 x 3/4	275	182402	Guard Muffler
160	169484	Retainer Clip	279	413150	Link Shift
161	105709X	Spring, Return, Clutch			
166	429164	Nut Push .625			
167	405257	Latch Brake Parking			

**NOTE:** All component dimensions given in U.S. inches  
1 inch = 25.4 mm

# REPAIR PARTS

TRACTOR- -MODEL NO. 917.253654

## STEERING ASSEMBLY



steering-tex\_STDHRR\_6\_r1

# REPAIR PARTS

## TRACTOR- -MODEL NO. 917.253654

### STEERING ASSEMBLY

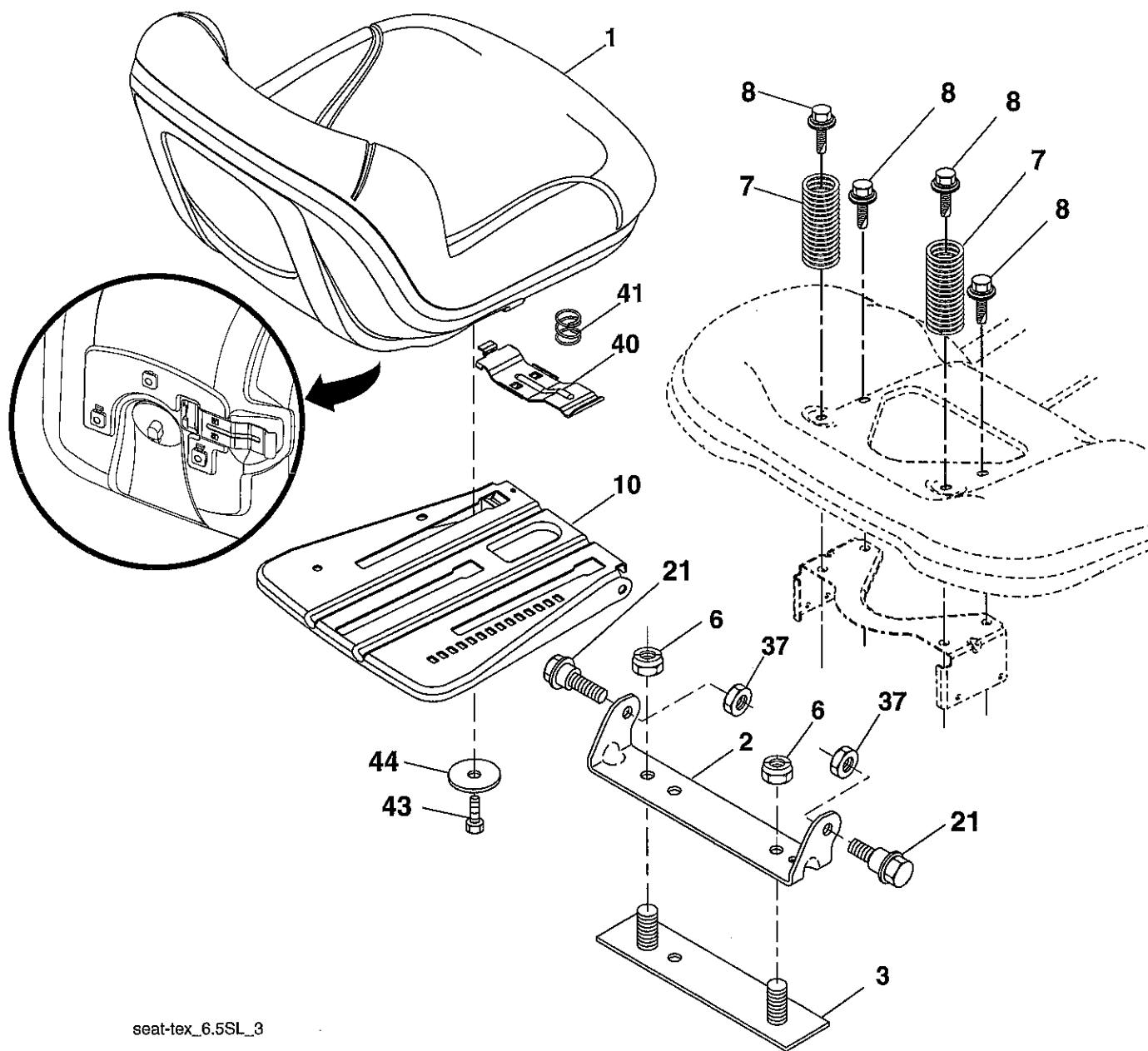
KEY NO.	PART NO.	DESCRIPTION
1	414803X428	Wheel, Steering
2	418168	Axle Asm., Front
4	403087	Spindle Asm., LH
5	403088	Spindle Asm., RH
6	6266H	Washer Thrust
7	121748X	Washer 25/32 x 1-5/8 x 16 Ga.
8	12000029	Ring, Klip #T5304-75
9	121232X	Cap, Spindle
13	121749X	Washer 25/32 x 1-1/4 x 16 Ga.
14	10040600	Washer, Lock Hvy Hlcl Spr 3/8
15	73540600	Nut, Crown Lock 3/8-24 unf
16	429373	Shaft Steering
19	194729	Plate Steering
20	400803X428	Boot, Steering
21	186737	Adapter, Wheel Steering
22	420537	Steering Supt. Lower
26	414852X428	Insert, Wheel Steering
28	17000612	Screw 3/8-16 x 3/4
33	10040500	Washer Lock Hvy HLCL Spr 5/16
35	194732	Gear, Sector Plate
45	19113812	Washer 11/32 ID x 2 3/8
53	188967	Washer Hardened .793 x 1.637 x .060
57	407465	Bracket Upstop
58	194747	Bolt Shoulder Sector Pivot CFM
59	194748	Washer Thrust Sector Steering
60	73971000	Nut Flange Lock 5/8-11
61	194740	Draglink LH
62	194741	Draglink, RH
63	17000512	Screw 5/16-18 x 3/4
64	199849	Retainer Clip Spring Steering
66	71020748	Bolt Hex Fghd 7/16-14 x 3 Serr
67	194737	Bushing PM Front Axle
68	73900700	Nut Lock Flange 7/16-14 Gr. 5
69	199162	Washer 1.5 x .505 x .118
70	196197	Bracket Deck Susp. Front
71	190752	Shaft Exten. Strg. Spline Tex
72	428982	Bolt Fin Hex 5/16-18 x 4
74	3366R	Bearing Col Strg Blk

**NOTE:** All component dimensions given in U.S. inches.  
1 inch = 25.4 mm.

# REPAIR PARTS

TRACTOR- -MODEL NO. 917.253654

## SEAT ASSEMBLY



seat-tex\_6.5SL\_3

KEY NO.	PART NO.	DESCRIPTION
1	423644	Seat
2	180166	Bracket Pivot Fender
3	140675	Strap, Asm Fender
6	73800600	Nut, Lock w/Ins. 3/8-16 unc
7	124181X	Spring, Seat Cprsn
8	171877	Bolt 5/16-18 unc x 3/4 w/Sems
10	196977	Pan, Seat
21	171852	Bolt, Shoulder 5/16-18

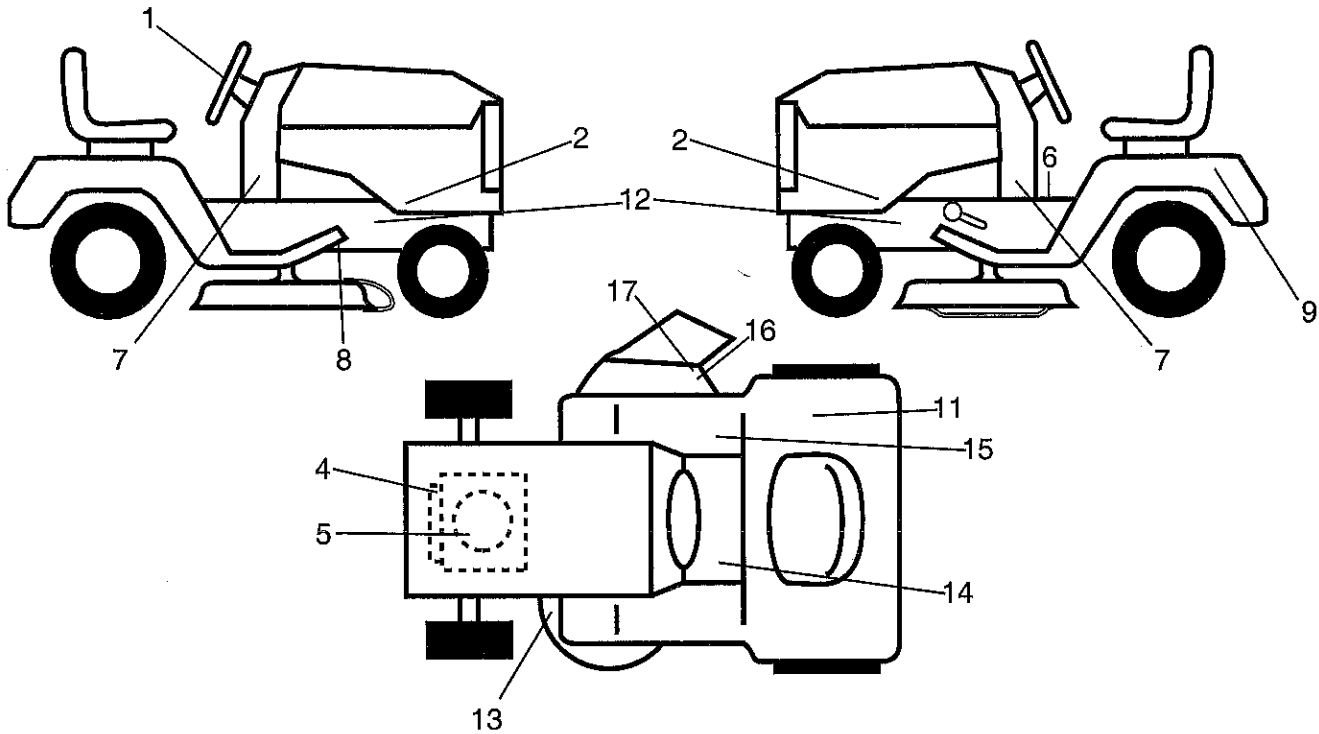
KEY NO.	PART NO.	DESCRIPTION
37	73800500	Nut, Lock 5/16-18 unc
40	197661	Handle Slide
41	198200	Spring Latch
43	74760612	Bolt 3/8-16 unc x 3/4
44	19133812	Washer 13/32 x 2 3/8 x 12 Ga.

**NOTE:** All component dimensions given in U.S. inches.  
1 inch = 25.4 mm

# REPAIR PARTS

TRACTOR- -MODEL NO. 917.253654

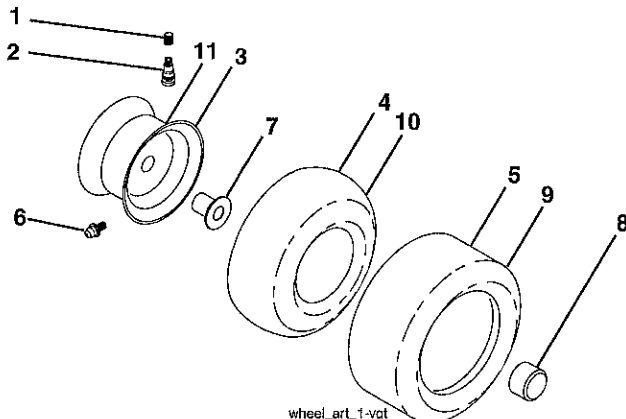
## DECALS



KEY NO.	PART NO.	DESCRIPTION
1	422885	Decal, Steering
2	433082	Decal, Panel SD
4	196841	Decal, Warning Engine Sym.
5	442545	Decal, Engine HP
6	400389	Decal, Fender Operator's
7	425634	Decal, Lower Dash
8	421534	Decal, V-Belt Schematic Drive
9	145005	Decal, Battery Dnge/Poi
11	180432	Decal, Fender 100 DB/CE
12	159736	Decal, Chassis Hot Muffler
13	160396	Decal, Mower V-Belt SCH.
14	159737	Decal, Brake/Clutch Sym.

KEY NO.	PART NO.	DESCRIPTION
15	140837	Decal, Saddle Brake Parking
16	196357	Decal, Deflector Wrn. Cutfin. Sym.
17	182166	Decal, Cutfinger CE
--	193226X428	Pad, Footrest LH
--	193227X428	Pad, Footrest RH
--	166960	Decal, Bypass
--	162598	Decal, Drawbar Load Limit
--	435185	Manual, Operator's (Euro)
--	435186	Manual, Operator's (Scand)
--	435187	Manual, Operator's (E-Bloc)
--	435188	Manual, Operator's (Baltic)
--	441787	Manual, Parts

## WHEELS & TIRES



wheel\_art\_1-vgt

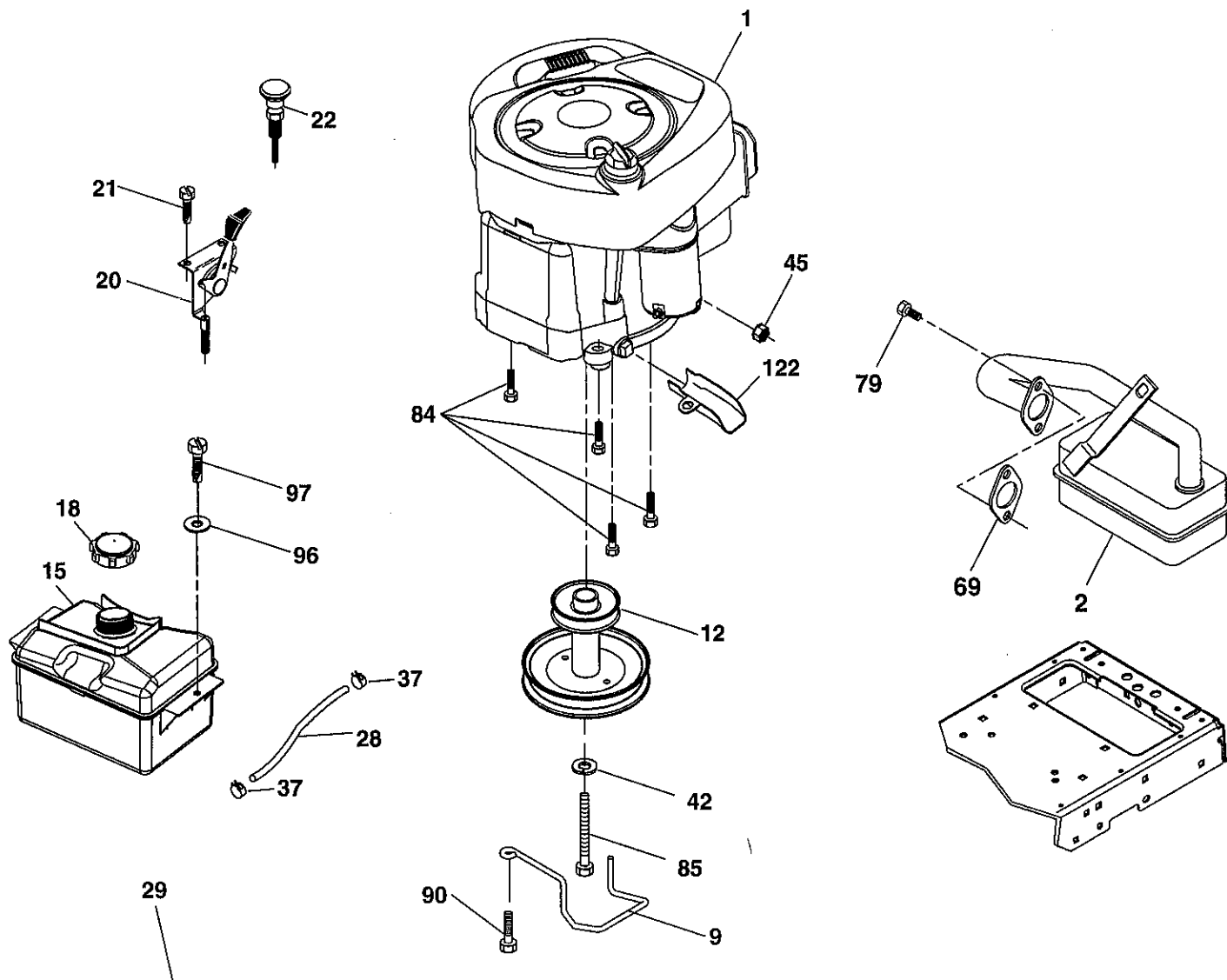
KEY NO.	PART NO.	DESCRIPTION
1	59192	Cap, Valve, Tire
2	65139	Stem, Valve
3	106732X613	Rim Assembly, Front
4	59904	Tube, Front
5	106222X	Tire, Front
6	278H	Fitting, Grease
7	9040H	Bearing, Flange
8	104757X428	Cap, Axle (Front Wheel Only)
9	420531	Tire, 18 x 9.5-8 TurfSaver LT
10	7152J	Tube, Rear
11	106108X613	Rim Assembly, Rear
--	144334	Sealant, Tire (10 oz. Tube)

**NOTE:** All component dimensions given in U.S. inches  
1 inch = 25.4 mm

# REPAIR PARTS

TRACTOR- -MODEL NO. 917.253654

ENGINE



**OPTIONAL EQUIPMENT**

**Spark Arrester**

engine-tex\_BS\_35

# REPAIR PARTS

## TRACTOR- -MODEL NO. 917.253654

### ENGINE

KEY NO.	PART NO.	DESCRIPTION
1	438592	Engine B&S Model No. 31C707-2429-B1
2	137352	Muffler
9	194320	Keeper Belt Engine
12	405471	Pulley Engine
15	407545	Tank Fuel 1.50
18	430220	Cap Asm
20	176636X428	Control Throttle
21	416358	Screw #10 x 0.750
22	187771X428	Control Choke
28	137040	Fuel Line
29	137180	Spark Arrester Kit
37	123487X	Clamp Hose
42	10040700	Washer Lock 7/16
45	73510400	Nut Keps Hex 1/4-20 unc
69	165291	Gasket
79	192334	Screw Socket Hd 5/16-18 x .75
84	17060620	Screw 3/8-16 x 1-1/4
85	173937	Bolt Hex 7/16-20 x 4 x Gr. 5-1.5
90	17000616	Screw 3/8-16 x 1.0
96	19091416	Washer 9/32 x 7/8 x 16 Ga.
97	17670412	Screw 1/4-20 x 3/4
122	421922	Extension Drain Oil

**NOTE:** All component dimensions given in U.S. inches  
1 inch = 25.4 mm

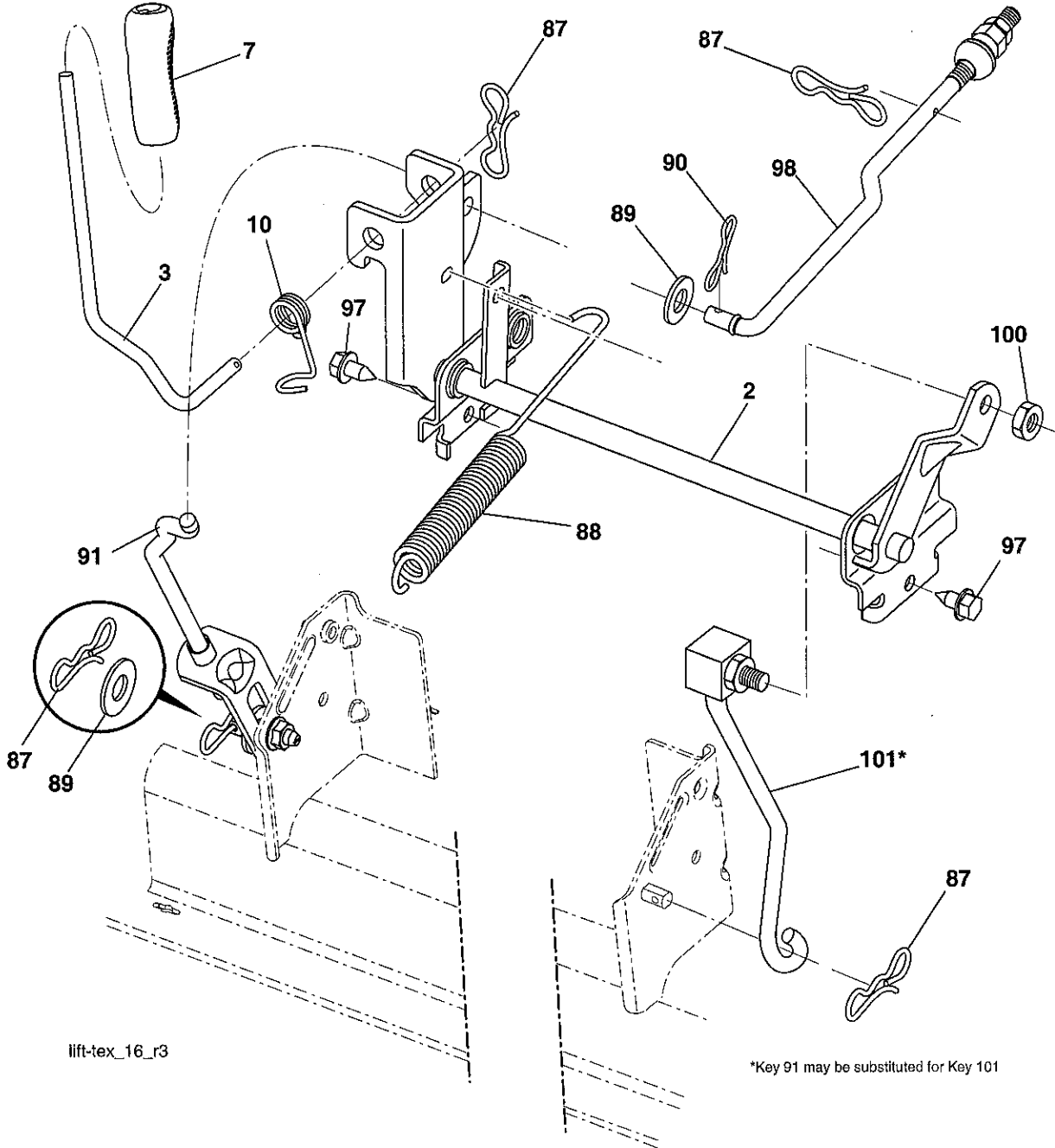
### Engine Power Rating Information

The gross power rating for individual gas engine models is labeled in accordance with SAE (Society of Automotive Engineers) code J1940 (Small Engine Power & Torque Rating Procedure), and rating performance has been obtained and corrected in accordance with SAE J1995 (Revision 2002-05). Torque values are derived at 3060 RPM; horsepower values are derived at 3600 RPM. Actual gross engine power will be lower and is affected by, among other things, ambient operating conditions and engine-to-engine variability. Given both the wide array of products on which engines are placed and the variety of environmental issues applicable to operating the equipment, the gas engine will not develop the rated gross power when used in a given piece of power equipment (actual "on-site" or net power). This difference is due to a variety of factors including, but not limited to, accessories (air cleaner, exhaust, charging, cooling, carburetor, fuel pump, etc.), application limitations, ambient operating conditions (temperature, humidity, altitude), and engine-to-engine variability. Due to manufacturing and capacity limitations, Briggs & Stratton may substitute an engine of higher rated power for this Series engine.

# REPAIR PARTS

TRACTOR- -MODEL NO. 917.253654

## MOWER LIFT





# REPAIR PARTS

TRACTOR- -MODEL NO. 917.253654

## MOWER LIFT

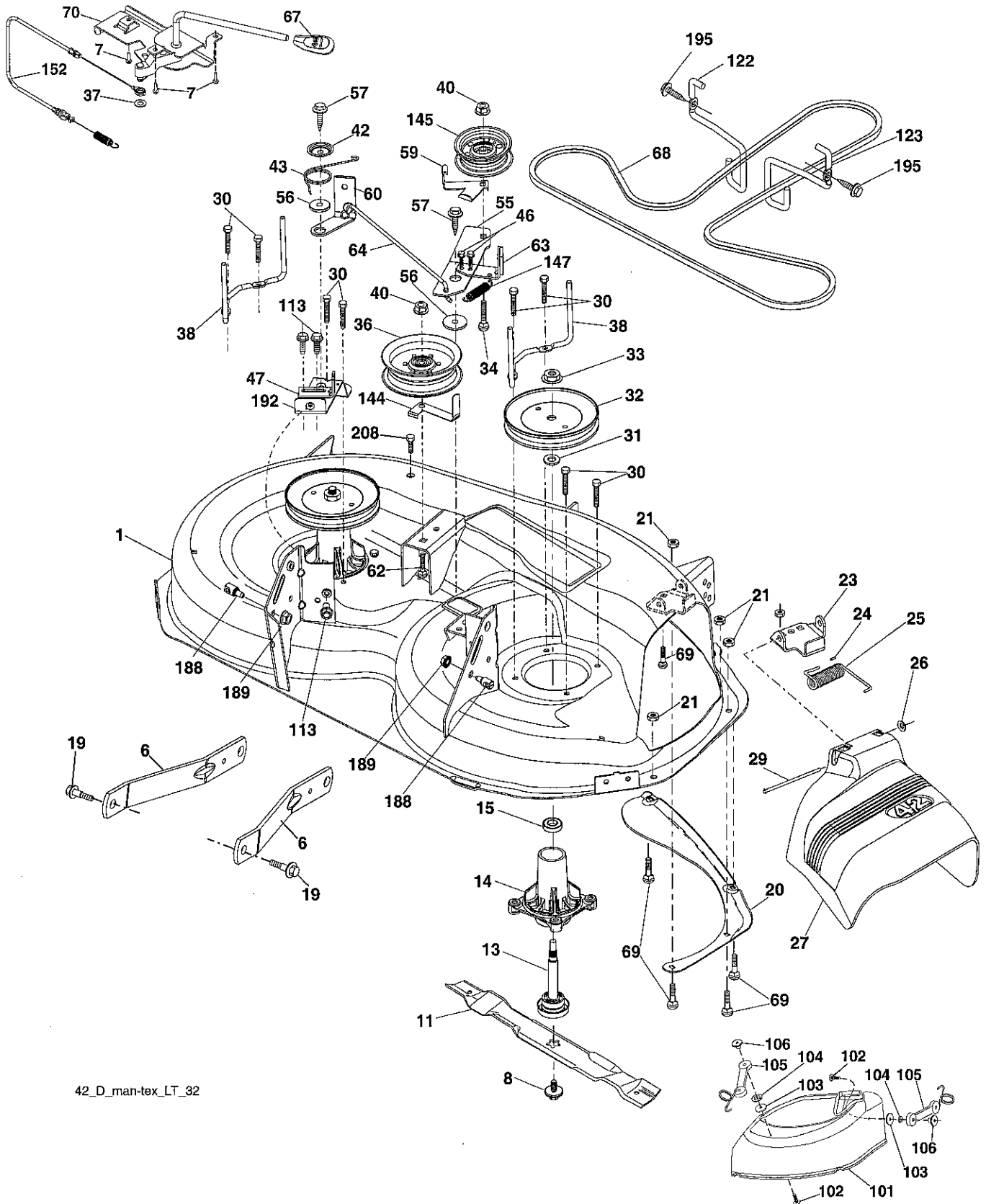
KEY NO.	PART NO.	DESCRIPTION
2	422027	Shaft Asm., Lift
3	195231	Lever Asm., Lift RH
7	196492X428	Grip, Lever
10	196314	Spring Torsion
87	194209	Pin Cotter 7/16 Bow Tie Lock
88	410710	Spring Lift Assist
89	19191912	Washer Clear Zinc
90	194208	Pin Cotter 5/16 Bow Tie Lock
91	195181	Link Lift Susp Mower Rear
97	17000612	Screw 3/8-16 x .75
98	195270	Link Lift Susp. Front Mower
100	73930600	Nut Centerlock 3/8-16 unc
101	407003	Link Asm. Lift FXD

**NOTE:** All component dimensions given in U.S. inches  
1 inch = 25.4 mm

# REPAIR PARTS

## TRACTOR- -MODEL NO. 917.253654

### MOWER



42\_D\_man-tex\_LT\_32

# REPAIR PARTS

TRACTOR- -MODEL NO. 917.253654

## MOWER

KEY NO.	PART NO.	DESCRIPTION	KEY NO.	PART NO.	DESCRIPTION
1	199911	Mower Housing	62	72110616	Bolt Rdhd Sqnk 3/8-16 unc x 2
6	195186	Arm Suspension	63	199477	Arm Brake Mower
7	416358	Screw 10 x .750 BOS Thread	64	199790	Linkage Brake
8	193003	Bolt/Washer Asm 7/16-20 unf	67	198398X428	Handle, Clutch Cable
11	424752	Blade, 3N1	68	429636	V-Belt
13	192872	Shaft Assembly, Mandrel	69	72140505	Bolt Rdhd Sqnk 5/16-18 x 5/8
14	187281	Housing, Mandrel	70	401246	Clutch Asm. Manual
15	110485X	Bearing, Ball, Mandrel	101	193107	Cover Mulching
19	196539	Bolt, Shoulder	102	71081010	Screw Pan Hd. Phillip 10-24 x 5/8
20	159770	Baffle Vortex	103	19061216	Washer #10
21	73680500	Nut, Crownlock 5/16-18 unc	104	10071000	Washer Lock #10
23	192557	Bracket, Deflector	105	160793	Latch Asm.
24	105304X	Cap, Sleeve	106	2029J	Nut Weld 327/304 #10-24
25	197026	Spring, Torsion, Deflector	113	17000510	Screw 5/16-18
26	110452X	Nut, Push	122	197258	Keeper Belt Eng. LH
27	424469	Shield, Deflector	123	197259	Keeper Belt Eng. RH
29	131491	Rod, Hinge	144	199204	Keeper Belt
30	173984	Screw Thdrol Rolling Wsh Hd	145	193197	Pulley, Idler, Flat
31	187690	Washer, Spacer	147	401971	Spring Return
32	197473	Pulley, Mandrel	152	435111	Cable Clutch Manual w/Spr.
33	400234	Nut, Toplock, Flanged	188	195161	Stud Fastener
34	72110612	Bolt Carr Sh. 3/8-16 x 1-1/2 Gr. 5	189	73900500	Nut Lock Hex Flange
36	197379	Pulley Idler	192	197260	Bracket Brake Stand LH
37	19131316	Washer 13/32 x 13/16 x 16 Ga.	195	17000612	Screw Hexwsh Thdr 3/8-16 x 3/4
38	432520	Keeper Belt LH Mandrel	208	17670608	Screw 3/8-16 x 1/2
40	73900600	Nut, Lock Flg. 3/8-16 unc	--	426340	Replacement Mower, Complete
42	197256	Spring Torsion Retainer	--	192870	Mandrel Assembly (Mandrel Assembly (Includes housing, shaft assembly, and bearing only - pulley/nut/washer and blade bolt/washers not included)
43	198410	Spring Torsion Brake			
46	137729	Screw Thd Roll 1/4-20 x 5/8			
47	197250	Bracket Clutch Cable			
55	437110	Arm, Idler			
56	199092	Spacer, Retainer			
57	17000616	Screw Hexwsh Thd 3/8-16 x 1			
59	141043	Guard, Tuv Idler (94)			
60	197261	Arm Brake Mower			

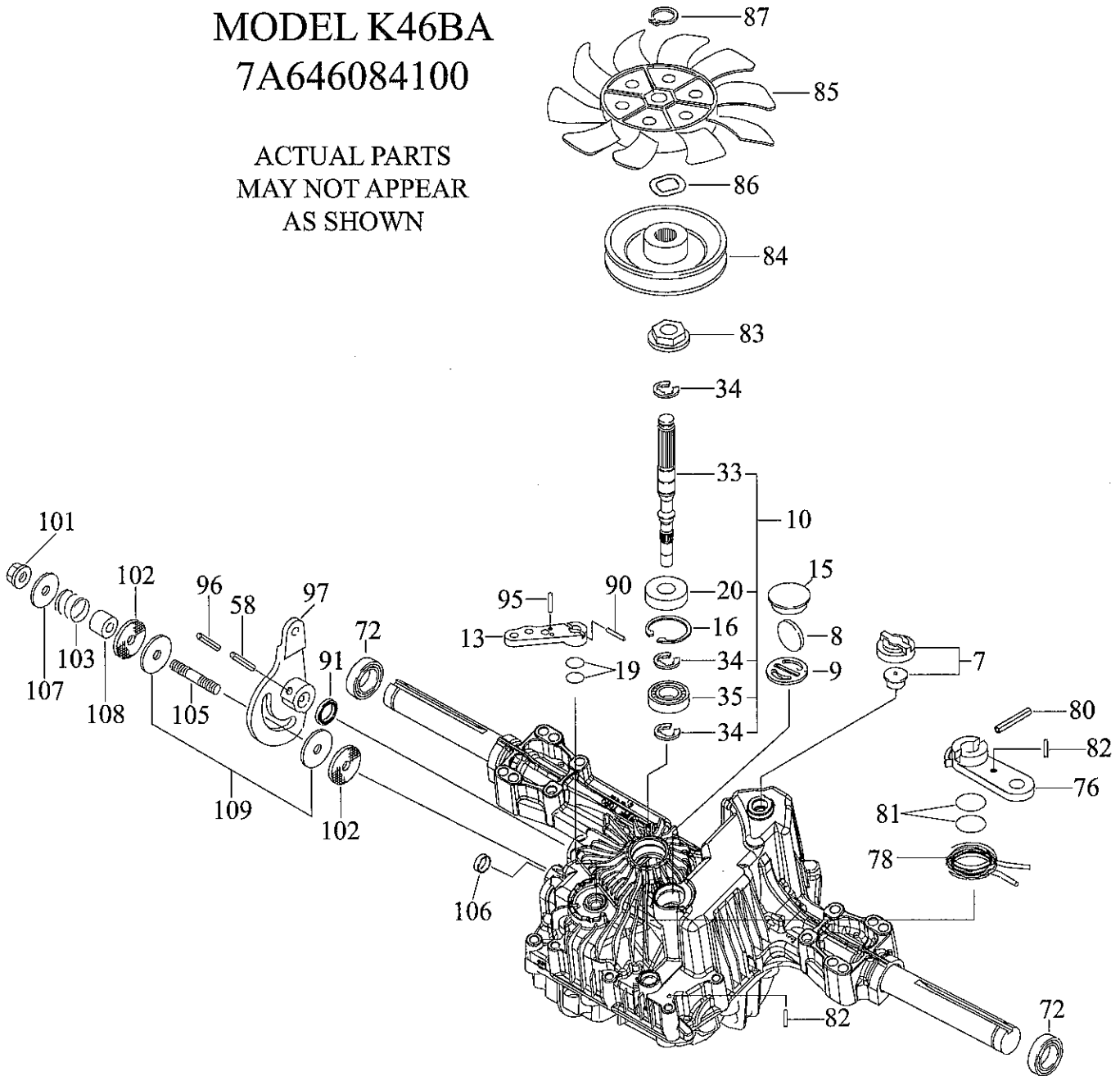
**NOTE:** All component dimensions given in U.S. inches  
1 inch = 25.4 mm

TRACTOR - - MODEL NUMBER 917.253654

TUFFTORQ TRANSAXLE - MODEL NUMBER K46BA

MODEL K46BA  
7A646084100

ACTUAL PARTS  
MAY NOT APPEAR  
AS SHOWN



# TRACTOR - - MODEL NUMBER 917.253654

## TUFFTORQ TRANSAXLE - MODEL NUMBER K46BA

KEY NO.	PART NO.	DESCRIPTION
7	414395	VENT VALVE 15
8	414396	MAGNET
9	414397	MAGNET HOLDER
10	415923	PUMP SHAFT/BEARING KIT
13	414398	BYPASS LEVER
15	414399	SEALING CAP 30
16	414400	SNAP RING C 35
19	414401	O-RING 1A P10A
20	414402	SEAL TC 153507
33	414403	PUMP SHAFT (STANDARD
34	414404	E-RING 15
35	414405	BEARING 6202C3
58	414406	ROLL PIN 6 * 40
72	414407	SEAL 19 * 32 * 8
76	414408	BRAKE LEVER
78	414409	BRAKE RETURN SPRING
80	414410	SPRING PIN 5 * 32
81	414411	O-RING 1A P12
82	414412	SPRING PIN 4 * 16
83	414413	SPINE COLLAR
84	414414	PULLEY L
85	414415	FAN, BLACK
86	414416	WAVE WASHER
87	414417	SNAP RING
90	414418	SPRING PIN 3.0A * 20
91	414419	OIL SEAL 16 * 22 * 03
95	415850	SPRING PIN 3.0A * 16
96	414420	ROLL PIN 3.5 * 40
97	414421	CONTROL LEVER
101	414216	LOCK NUT 10
102	414423	WASHER 10 * 40 * 4
103	414424	SPRING
105	414425	STUD 10 * 60
106	414426	SEALING CAP 18
107	414427	WASHER 10 * 36 * 2.8
108	414428	COLLAR 10 * 20 * 17
109	414429	FRICTION PLATE KIT

**NOTE:** All component dimensions given in U.S. inches  
1 inch = 25.4 mm

# REPAIR PARTS

## TRACTOR- -MODEL NO. 917.253654

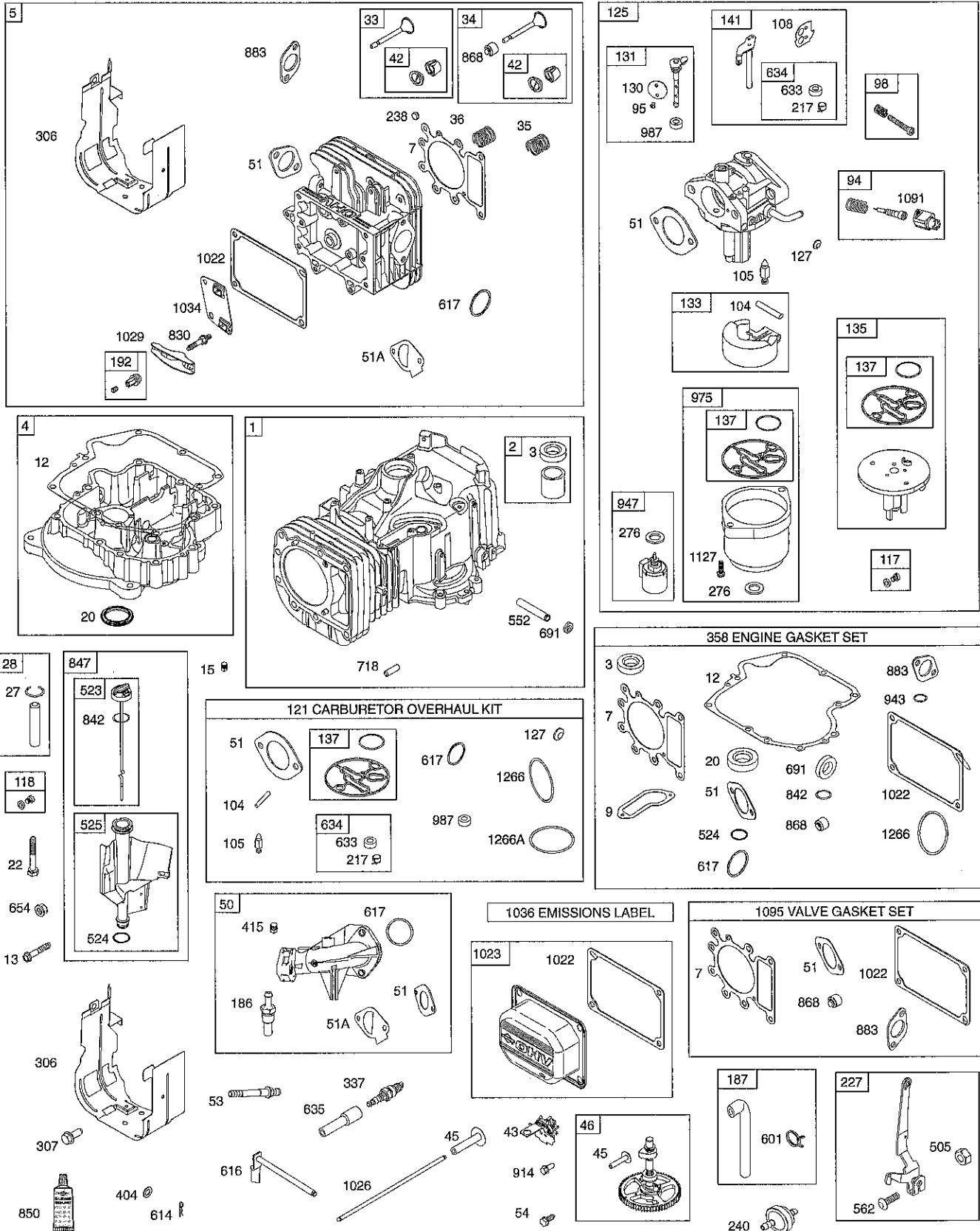
### BRIGGS & STRATTON ENGINE - - MODEL NUMBER 31C707, TYPE NUMBER 2429-B1

48 SHORT BLOCK

1036 EMISSIONS LABEL

1058 OPERATOR'S MANUAL

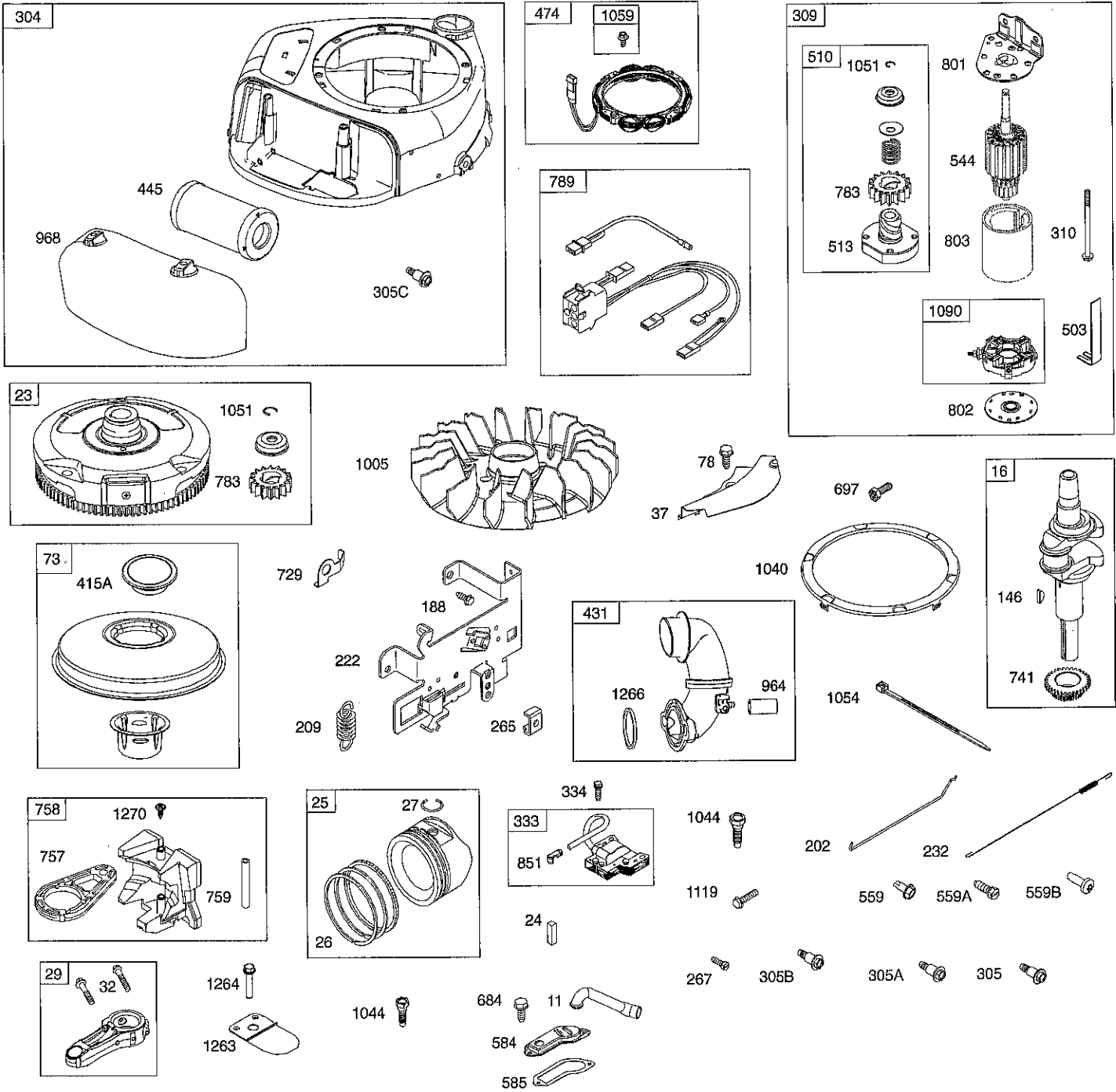
1329 REPLACEMENT ENGINE



# REPAIR PARTS

TRACTOR- -MODEL NO. 917.253654

BRIGGS & STRATTON ENGINE - - MODEL NUMBER 31C707, TYPE NUMBER 2429-B1



# REPAIR PARTS

## TRACTOR- -MODEL NO. 917.253654

BRIGGS & STRATTON ENGINE - - MODEL NUMBER 31C707, TYPE NUMBER 2429-B1

KEY NO.	PART NO.	DESCRIPTION	KEY NO.	PART NO.	DESCRIPTION
1	796010	Cylinder Assembly	141	792777	Kit-Choke Shaft
2	399265	Bushing/Seal Kit (Magneto Side)	146	691639	Key-Timing
3	391086s	Seal-Oil (Magneto Side)	186	794873	Connector-Hose (Intake Manifold)
4	697106	Sump-Engine	187	791805	Line-Fuel (Formed) (Cut to Required Length)
5	796026	Head-Cylinder			Screw (Control Bracket)
7	796584	Gasket-Cylinder Head	188	691693	Adjuster-Rocker Arm
11	794683	Tube-Breather	192	691986	Link-Mechanical Governor
12	697110	Gasket-Crankcase	202	691841	Spring-Governor (Green)
13	793988	Screw (Cylinder Head)	209	692208	Spring-Choke Return
15	690946	Plug-Oil Drain	217	695409	Bracket-Control
16	797579	Crankshaft	222	694042	Lever-Governor Control
20	795387	Seal-Oil (PTO Side)	227	691374	Spring-Governor Link
22	692125	Screw (Crankcase Cover/Sump)	232	691842	Cap-Valve
23	698281	Flywheel	238	691843	Filter-Fuel
24	796335	Key-Flywheel (Steel)	240	394358s	Clamp-Casing
25	796172	Piston Assembly (Standard)	265	691024	Screw (Casing Clamp)
	796173	Piston Assembly (.020" Oversize)	267	794904	Washer-Sealing
26	791936	Ring Set (Standard)	276	695410	Blower Housing
	792649	Ring Set (.020" Oversize)	304	797900	Screw (Blower Housing)
27	698469	Lock-Piston Pin	305	697102	(1/4-20x1.14)
28	796007	Pin-Piston			Screw (Blower Housing)
29	794122	Rod-Connecting	305A	793376	(1/4-20x.82)
32	791118	Screw (Connecting Rod)			Screw (Blower Housing)
33	792868	Valve-Exhaust	305B	795891	(10-16x.43)
34	791935	Valve-Intake			Screw (Blower Housing)
35	691279	Spring-Valve (Intake)	305C	799370	(1/4-20x.90)
36	691279	Spring-Valve (Exhaust)			Shield-Cylinder
37	697352	Guard-Flywheel	306	796006	Screw (Cylinder Shield)
42	499586	Keeper-Valve	307	691693	Motor-Starter
43	691968	Slinger-Governor/Oil	309	693551	Screw (Starter Motor)
45	690564	Tappet-Valve	310	690323	Screen/Cup Assembly
46	793880	Gear-Cam	324	796308	Armature-Magneto
48	697761	Short Block	333	795315	Screw (Magneto Armature)
50	796180	Manifold-Intake	334	691061	Plug-Spark
51	692137	Gasket-Intake	337	691043	Gasket Set-Engine
51A	796081	Gasket-Intake	358	796187	Washer (Governor Crank)
53	690227	Stud (Carburetor)	404	691691	Plug (Intake Manifold)
54	691148	Screw (Intake Manifold)	415	794903	Plug (Cover/Retainer)
78	691693	Screw (Flywheel Guard)	415A	794129	Elbow-Intake
94	793610	Kit-Idle Mixture	431	797901	Filter-Air Cleaner Cartridge
95	690718	Screw (Throttle Valve)	445	796031	Alternator
98	695408	Kit-Idle Speed	474	696459	Strap-Starter
104	694918	Pin-Float Hinge	503	691532	Nut (Governor Control Lever)
105	696136	Valve-Float Needle	505	691251	Drive-Starter
108	695419	Valve-Choke	510	693699	Clutch-Drive
117	843099	Jet-Main (Standard)	513	692024	Dipstick
118	790890	Jet-Main (High Altitude)	523	699908	Seal-Dipstick Tube
121	796184	Kit-Carburetor Overhaul	524	691032	Tube-Dipstick
125	796109	Carburetor	525	697184	Bushing-Governor Crank
127	690727	Plug-Welch	552	697144	Screw (Remote Choke Stop)
130	699500	Valve-Throttle	559	697561	(#8-32x.37) (Control Bracket)
131	699501	Kit-Throttle Shaft			Screw (Remote Choke Stop)
133	694914	Float-Carburetor	559A	693675	(T-25x.4) (Control Bracket)
135	698780	Tube-Fuel Transfer			Screw (Remote Choke Stop)
137	698781	Gasket-Float Bowl	559B	699881	(T20 #8-32x.5) (Control Bracket)



# REPAIR PARTS

TRACTOR- -MODEL NO. 917.253654

BRIGGS & STRATTON ENGINE - - MODEL NUMBER 31C707, TYPE NUMBER 2429-B1

KEY NO.	PART NO.	DESCRIPTION	KEY NO.	PART NO.	DESCRIPTION
562	691119	Screw (Governor Control Lever)	968	797902	Cover-Air Cleaner
584	794682	Cover-Breather Passage	975	699502	Bowl-Fuel
585	697109	Gasket-Breather Passage	987	698777	Seal-Throttle Shaft
601	791850	Hose-Clamp (Green)	1005	796201	Fan-Flywheel
614	691620	Pin-Cotter	1022	272475s	Gasket-Rocker Cover
616	692012	Crank-Governor	1023	797421	Cover-Rocker
617	692138	Seal-O Ring (Intake Manifold) (Red)	1026	692003	Rod-Push (Intake)
				692011	Rod-Push (Exhaust)
633	699813	Seal-Choke/Throttle Shaft (Choke Shaft)	1029	691751	Arm-Rocker
			1034	690822	Guide-Push Rod
634	698779	Spring/Seal Assembly (Choke Shaft)	1036		Label-Emissions (Available from a Briggs & Stratton Authorized Dealer)
635	691909	Boot-Spark Plug			Plate-Trim
654	690958	Nut (Carburetor)	1040	698368	Screw (Flywheel)
684	697157	Screw (Breather Assembly)	1044	698139	Ring-Retaining
691	692407	Seal-Governor Shaft	1051	691265	Tie-Cable
697	791680	Screw (Drive Cap)	1054	280275	Operator's Manual
718	690959	Pin-Locating	1058	276344TRI	Kit-Screw/Washer
729	691224	Clip-Wire	1059	698516	Retainer-Brush
741	697128	Gear-Timing	1090	691293	Cap-Limiter
757	793242	Link-Counterweight	1091	691333	Gasket Set-Valve
758	793763	Counterweight	1095	794152	Screw (Alternator)
759	697392	Pin-Counterweight	1119	691183	Screw (Float Bowl)
783	693713	Gear-Pinion	1127	695407	Reed-Breather
789	698329	Harness-Wiring	1263	697124	Screw (Breather Reed)
801	691283	Cap-Drive	1264	697104	Seal-O Ring (Intake Elbow) (Red)
802	691286	Cap-End	1266	691917	Seal-O Ring (Intake Elbow)
830	691095	Stud-Rocker Arm	1266A	697123	Plug-AVS Counterweight
842	691031	Seal-O Ring (Dipstick Tube)	1270	793243	
847	790442	Dipstick/Tube Assembly	1329	31C707- 3026-G5	Replacement Engine Repair Manual
850	100106	Sealant-Liquid			
851	692424	Terminal-Spark Plug	1330	272147	
868	690968	Seal-Valve			
883	692236	Gasket-Exhaust			Engine Gasket Set
914	697551	Screw (Rocker Cover)			Valve Gasket Set
947	699915	Solenoid-Fuel			Carburetor Overhaul Kit
964	799159	Cap-Connector			Key No. 358
					Key No. 1095
					Key No. 121

### **LIMITED WARRANTY ON CRAFTSMAN RIDING EQUIPMENT**

For two (2) years from the date of purchase, if this Craftsman Riding Equipment is maintained, lubricated and tuned up according to the instructions in the owner's manual, Sears will repair or replace free of charge any parts that are found to be defective in material or workmanship according to the guidelines of coverage listed below. Sears will also provide free labor for these applicable warranted parts for the two full years. During the first 30 days of purchase, there will be no charges to service the product at your home for issues covered by this warranty. (See exclusions below). For your convenience, IN HOME warranty service will still be available after the first 30 days of purchase, but a trip charge will apply. This charge will be waived if the Craftsman product is dropped off at an authorized Sears location. For the nearest authorized Sears location, please call 1-800-4-MY-HOME®. This warranty applies only while this product is within the United States.

This Warranty does not cover:

- Expendable items which become worn during normal use, including but not limited to blades, spark plugs, air cleaners, belts, and oil filters.
- Standard Maintenance Servicing, oil changes, or tune-ups
- Tire replacement or repair caused by punctures from outside objects, such as nails, thorns, stumps, or glass.
- Repairs necessary because of operator abuse, including but not limited to, damage caused by towing objects beyond the capability of the riding equipment, impacting objects that bend the frame or crankshaft, or over-speeding the engine.
- Repairs necessary because of operator negligence, including but not limited to, electrical and mechanical damage caused by improper storage, failure to use the proper grade and amount of engine oil, failure to keep the deck clear of flammable debris, or failure to maintain the equipment according to the instructions contained in the owner's manual.
- Engine (fuel system) cleaning or repairs caused by fuel determined to be contaminated or oxidized (stale). In general, fuel should be used within 30 days of its purchase date.
- Normal deterioration and wear of the exterior finishes, or product label replacement.
- Riding equipment used for commercial or rental purposes.

### **LIMITED WARRANTY ON BATTERY**

For ninety (90) days from date of purchase, if any battery included with this riding equipment proves defective in material or workmanship and our testing determines the battery will not hold a charge, Sears will replace the battery at no charge. During the first 30 days of purchase, there will be no charges to replace the battery at your HOME. After the first 30 days, for your convenience, IN-HOME warranty service will still be available but a trip charge will apply. This charge will be waived if the Craftsman product is dropped off at an authorized Sears location. For the nearest authorized Sears location, please call 1-800-4-MY-HOME®.

This battery warranty applies only while this product is within the United States.

This warranty gives you specific legal rights, and you may also have other rights, which vary, from state to state.

Sears, Roebuck and Co., Dept. 817WA, Hoffman Estates, IL 60179

---

# SERVICE NOTES

---

