

REPAIR PARTS MANUAL
MODEL NO. 253690
Lawn Tractor



HOW TO USE THIS MANUAL

This manual is designed to provide the customer with a means to identify the parts on his/her tractor when ordering repair parts. The illustrations may or may not represent the actual assemblies; therefore, it is not recommended to use this manual as a guide to assemble or disassemble the tractor. Some hardware and parts are drawn larger in order to more readily identify them.

Each tractor has its own model number.

The model number for your tractor can be found on the fender under the seat.

When ordering parts, always give the following information:

- Product - "Tractor"
- Model Number - "253690"
- Part Number
- Part Description

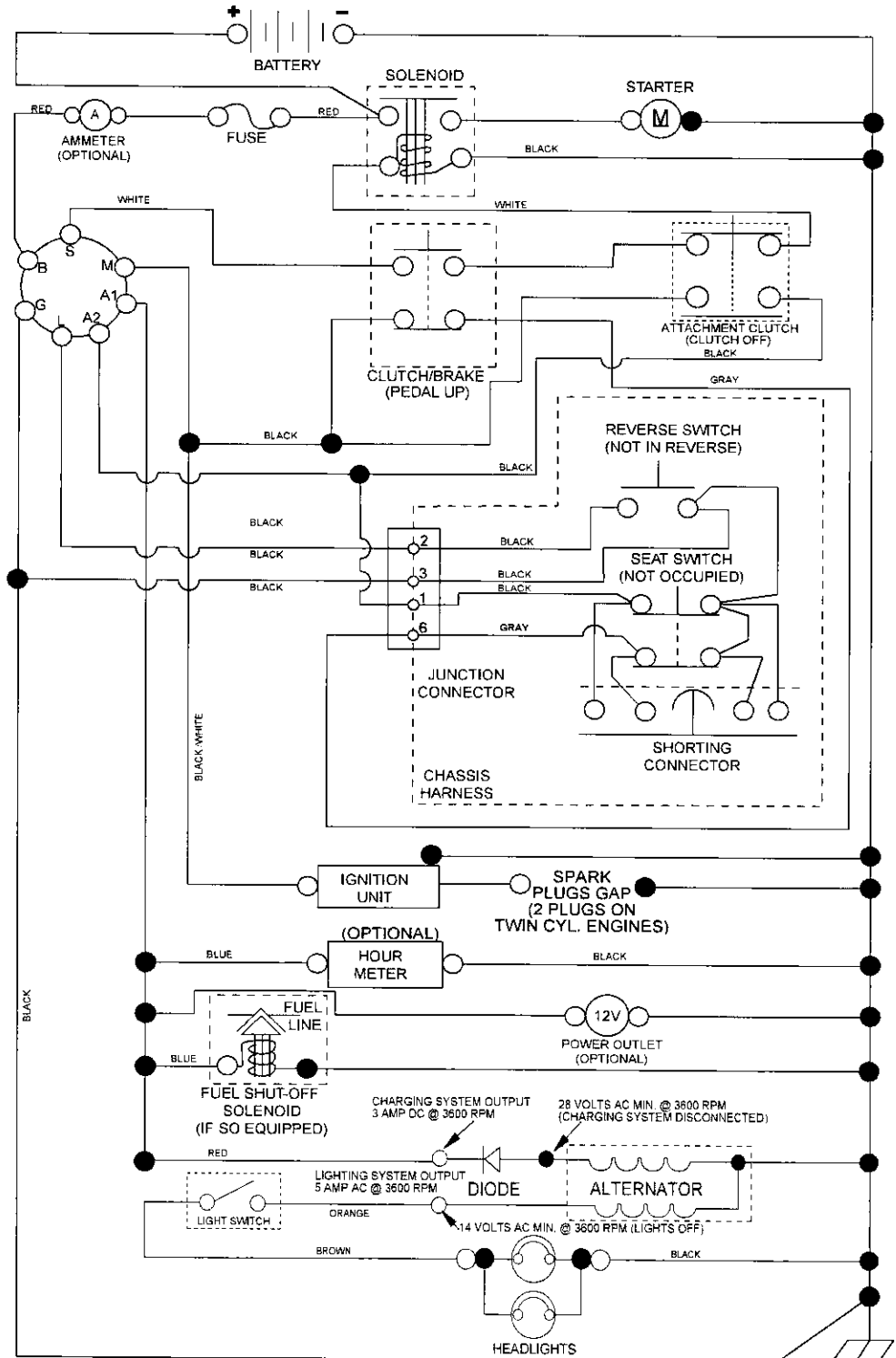
TABLE OF CONTENTS

SCHEMATIC	3
ELECTRICAL.....	4-5
CHASSIS	6-7
DRIVE.....	8-9
ENGINE.....	10-11
STEERING	12-13
SEAT	14
DECALS.....	15
MOWER DECK	16-17
MOWER LIFT.....	18-19
TRANSAXLE BREAKDOWN	20-21
ENGINE BREAKDOWN.....	22-26
WARRANTY.....	BACK COVER

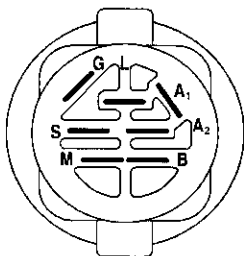
TRACTOR- -MODEL NO. 917.253690

SCHEMATIC

SCH11

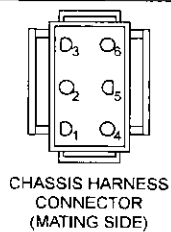


NOTE
YOUR TRACTOR IS EQUIPPED WITH A SPECIAL ALTERNATOR SYSTEM. THE LIGHTS ARE NOT CONNECTED TO THE BATTERY, BUT HAVE THEIR OWN ELECTRICAL SOURCE. BECAUSE OF THIS, THE BRIGHTNESS OF THE LIGHTS WILL CHANGE WITH ENGINE SPEED. AT IDLE THE LIGHTS WILL DIM. AS THE ENGINE IS SPEEDED UP, THE LIGHTS WILL BECOME THEIR BRIGHTEST.



IGNITION SWITCH

POSITION	CIRCUIT	"MAKE"
OFF	M+G+A1	
RUN/OVERRIDE	B+A1	
RUN	B+A1	L+A2
START	B + S + A1	



CHASSIS HARNESS CONNECTOR (MATING SIDE)



DASH HARNESS CONNECTOR (MATING SIDE)

WIRING INSULATED CLIPS
NOTE: IF WIRING INSULATED CLIPS WERE REMOVED FOR SERVICING OF UNIT, THEY SHOULD BE RE-INSTALLED TO PROPERLY SECURE YOUR WIRING.

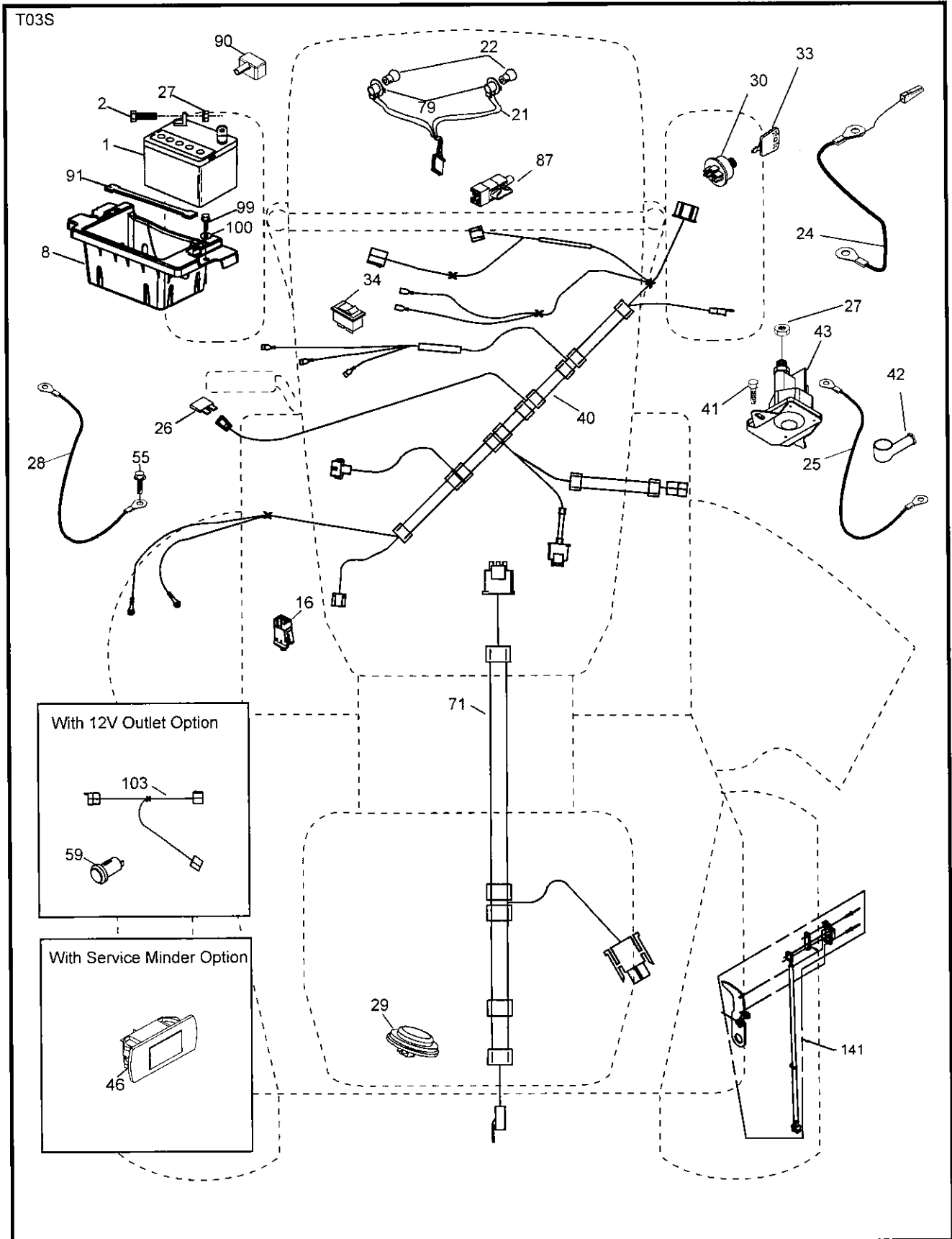
● NON-REMOVABLE CONNECTIONS

○ REMOVABLE CONNECTIONS

REPAIR PARTS

TRACTOR- -MODEL NO. 917.253690

ELECTRICAL



REPAIR PARTS

TRACTOR- -MODEL NO. 917.253690

ELECTRICAL

KEY NO.	PART NO.	DESCRIPTION
1	163465	Battery
2	74760412	Bolt Hex Hd 1/4-20 unc x 3/4
8	186491	Box Battery
16	176138	Switch Interlock Push-In
21	400252	Harness Socket Light w/4152J
22	4152J	Bulb Light
24	400253	Cable Btry.
25	412895	Cable Starter
26	175158	Fuse
27	73510400	Nut Keps Hex 1/4-20 unc
28	145491	Cable, Ground
29	401545	Switch, Seat
30	193350	Switch, Ign
33	411934	Key/Chain
34	110712X	Switch Light / Reset
40	401098	Harness Ign. Dash
41	17720408	Screw Thd Cut 1/4-20 x 1/2
42	131563	Cover, Terminal
43	192507	Solenoid
46	413931	Gauge SRVCMNDR HRMTR
55	17060512	Screw Thdrol 5/16-18 x 3/4 TYTT
71	194276	Harness Ign. Chassis
79	175242	Bulbholder Asm. Incan Descent
87	197802	Switch Interlock Clutch Cable
90	400724	Cover Terminal Battery
91	190270	Strap Btry.
99	17670412	Screw Hexwsh Thdrol 1/4-20 x 3/4
100	19091416	Washer 9/32 x 7/8 16 Ga.
141	416977	Kit T2 ROS

NOTE: All component dimensions given in U.S. inches.
1 inch = 25.4 mm.

REPAIR PARTS

TRACTOR- -MODEL NO. 917.253690

CHASSIS AND ENCLOSURES

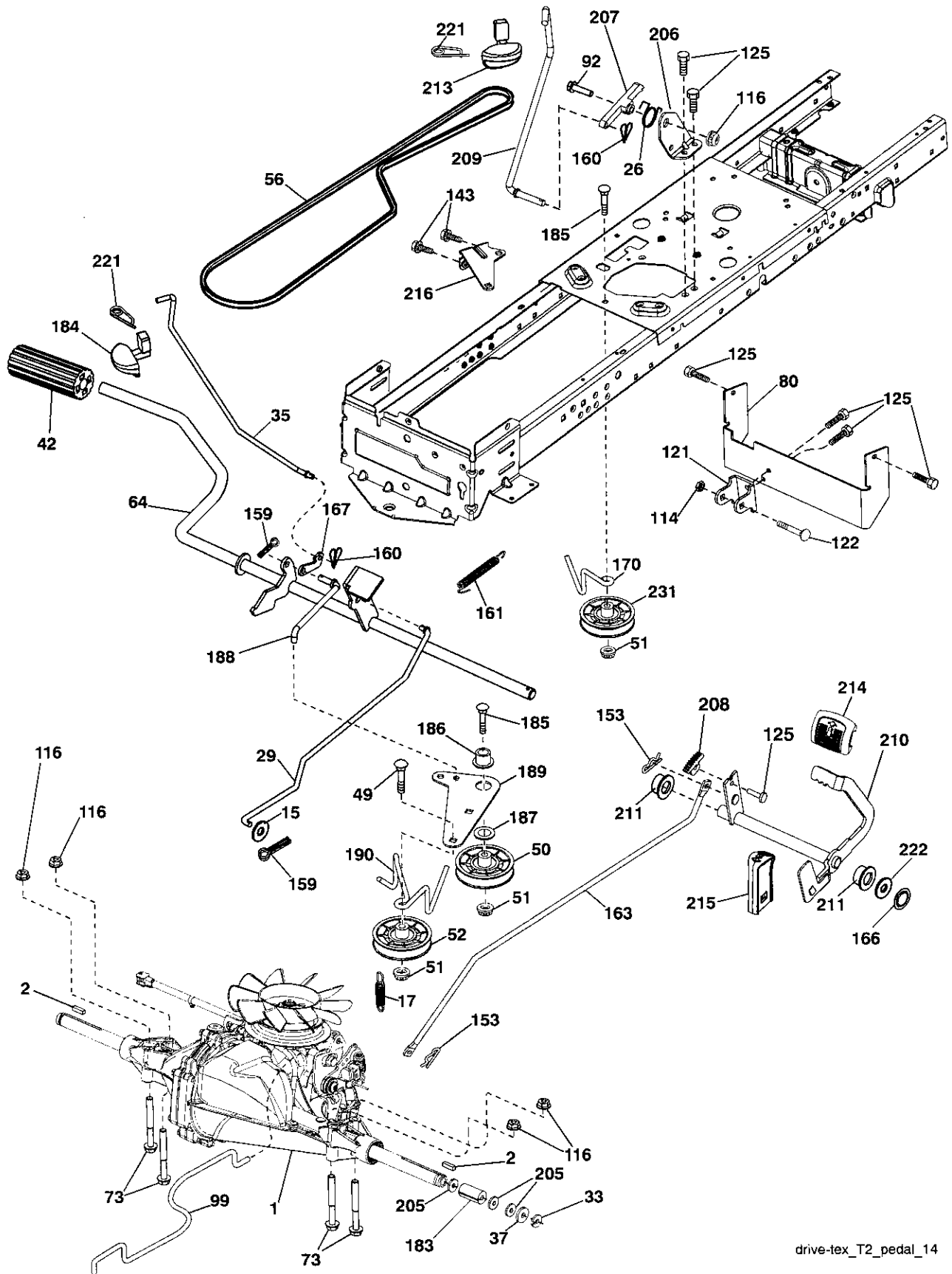
KEY NO.	PART NO.	DESCRIPTION
5	421809X428	Dash
14	421154X615	Hood
15	421493X599	Lens LH
18	423157	Grille
25	421494X599	Lens RH
34	196125	Plate Engine
36	17060512	Screw 5/16-18 x 3/4
37	414878X615	Fender
52	73680500	Nut Crown Lock 5/16-18
58	412280	Drawbar Upper
68	17490508	Screw Thdrol 5/16-18 x 1/2
130	416358	Screw # 10 x .750 BOS Thread
138	193224X428	Cupholder
150	199411	Duct Heat Hood
151	196332	Bracket Pivot
152	199535	Shield Browning/Debris
159	17000612	Screw Hexwsh Thdrol 3/8-16 x 3/4
161	193229X428	Window Fuel
162	142432	Screw Hex Wsh Hi-Lo 1/4 x 1/2
165	196826	Support Tank Rear
175	196304	Crossmember
176	400776	Screw 10-24 x 5/8 Wshd Qdrx
177	195227	Bushing Steering
180	415063	Chassis
181	193102X428	Bushing Mtg. Fender Crgo.
182	406859	Dash Lower
183	74780520	Bolt Fin Hex 5/16-18 x 1-1/4
189	17000512	Screw 5/16 - 18 x 3/4
191	425407	Insert Reflective RH
194	73900500	Nut Lock Hex Flange 5/16-18
195	401556X428	Plug Hole Dash 12V Adapter
196	414579	Console Asm. Deck Lift
202	423175	Vent Side Hood RH
203	423174	Vent Side Hood LH
213	74760512	Bolt hex HD 5/16-18 unc x 3/4
217	409167	Rod Pivot Chassis
218	196395	X piece hood stop
225	421255X615	Bumper
228	195161	Stud Fastener
235	406129	Spacer Fender
236	73930500	Nut Center Lock 5/16-18
237	403704	Plug Mount Cargo
287	17600406	Screw Hex Washhead 1/4-20 x 3/8
297	425406	Insert Reflective LH
314	423145	Trim SD LH
315	423146	Trim SD RH

NOTE: All component dimensions given in U.S. inches.
1 inch = 25.4 mm.

REPAIR PARTS

TRACTOR- -MODEL NO. 917.253690

DRIVE



drive-tex_T2_pedal_14

REPAIR PARTS

TRACTOR- -MODEL NO. 917.253690

DRIVE

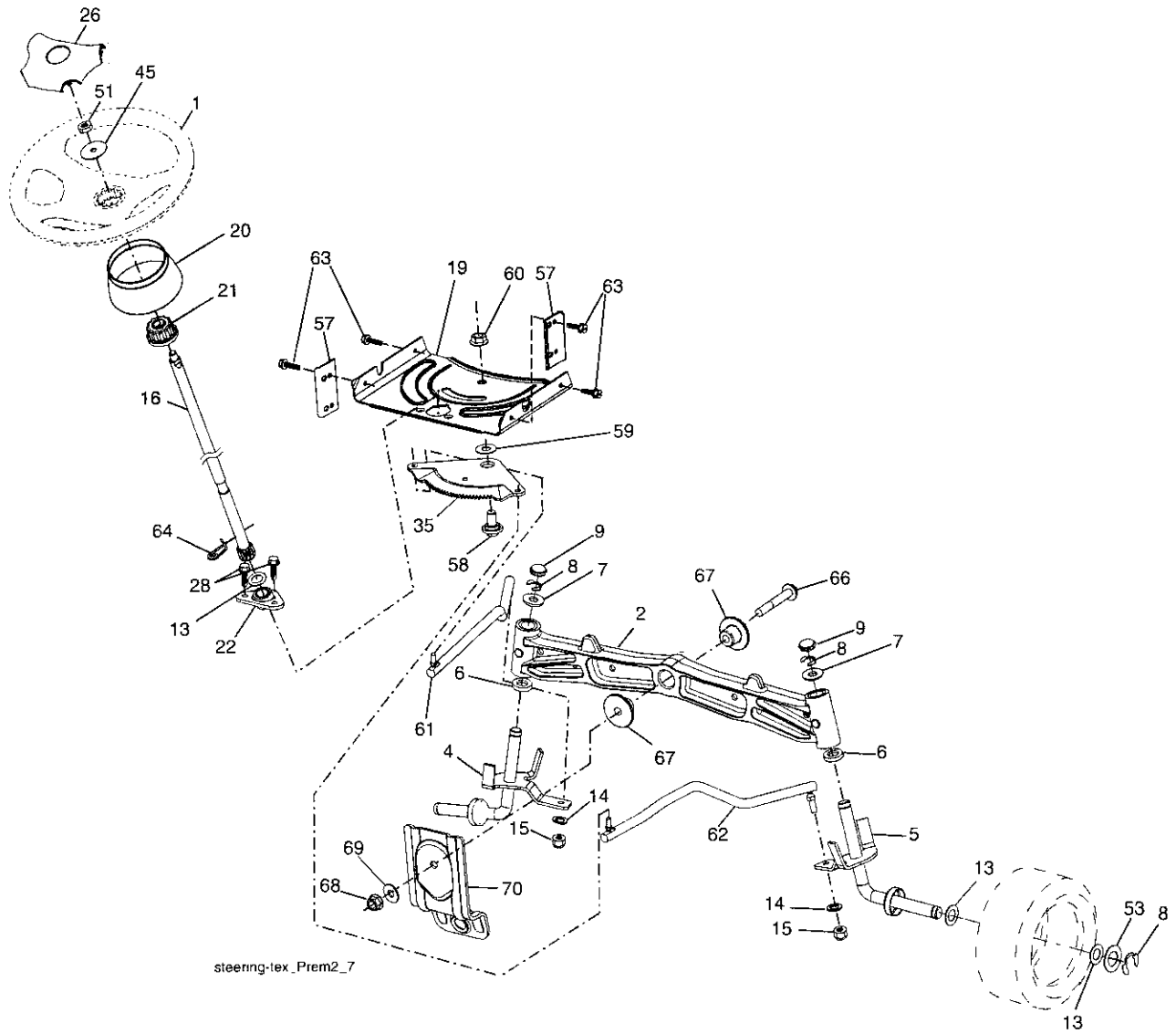
KEY NO.	PART NO.	DESCRIPTION	KEY NO.	PART NO.	DESCRIPTION
1	--	Transaxle, Hydro GR T2-AABC-1X2B-1GX1	163	413322	Rod Pedal Control
2	123583X	Key	166	197290	Nut, Push
15	19131316	Washer 13/32 x 13/16 x 16 Ga.	167	405257	Latch Brake Parking
17	197296	Spring, Brake	170	413430	Keeper Belt Centerspan
26	199679	Spring Return Cruise	183	156972	Spacer Axle
29	423239	Rod, Brake	184	196439X505	Handle Parking Brake
33	12000001	Ring E	185	72110622	Bolt
35	199591	Rod, Brake, Park	186	194321	Spacer Retainer
37	121749x	Washer 25/32 x 1-1/4 x 16 Ga.	187	19133210	Washer
42	8883R	Cover, Foot Pedal	188	194323	Link Clutch Ground Drive
49	72110614	Bolt	189	194317	Bellcrank Ground Drive
50	194327	Pulley Idler Flat	190	194318	Keeper Bellcrank Ground Drive
51	73900600	Lock Nut 3/8-16	205	121748X	Washer
52	194326	Idler V-Groove 910" Offset	206	197867	Bracket Mount Latch Cruise
56	125907x	V-Belt, Drive	207	197868	Latch Control Cruise
64	197865	Shaft Asm. Pedal Brake Control	208	197869	Bolt Sector Control Cruise
73	74490544	Bolt Hex Flghd. 5/16-18 Gr. 5	209	199592	Rod Control Cruise
80	408393	Strap Torque	210	400980	Rocker Asm. Pedal Control
92	74760520	Bolt Fin. Hex 5/16-18 unc x 1.25	211	120183X	Bearing, Nylon
99	408418	Rod Asm. Bypass	213	196441X428	Knob Control Cruise
114	73800500	Nut Lock 5/16-18 unc	214	421263	Pad Pedal Forward
116	73900500	Nut Lock Hex Flange 5/16-18	215	197301X428	Pad Pedal Reverse
121	175611	Bracket Mount Torque	216	196131	Bracket Pulley Idler
122	72010520	Bolt 5/16-18 2.50	221	403187	Retainer Spring Clip Handle
125	17000512	Screw 5/16-18 x 3/4	222	79212010	Washer
143	17490508	Screw 5/16-18 x 1/2	231	407287	Idler V-Groove 1.688" OFFSET
153	4497H	Retainer Spring			
159	76020412	Pin Cotter 1/8 x 3/4			
160	169484	Retainer Clip			
161	105709x	Spring, Return, Clutch			

NOTE: All component dimensions given in U.S. inches
1 inch = 25.4 mm

REPAIR PARTS

TRACTOR- -MODEL NO. 917.253690

STEERING ASSEMBLY



REPAIR PARTS

TRACTOR- -MODEL NO. 917.253690

STEERING ASSEMBLY

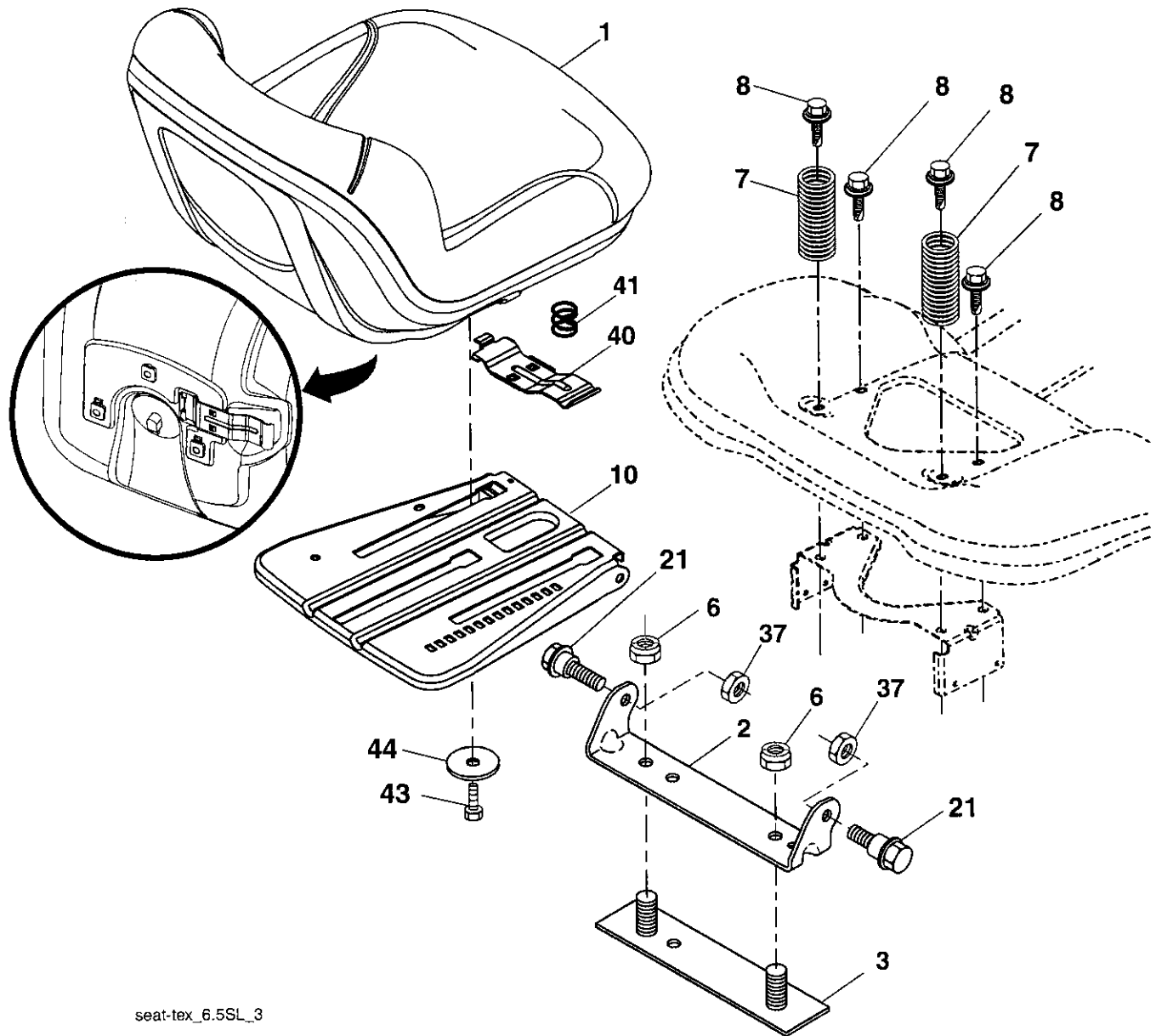
KEY NO.	PART NO.	DESCRIPTION
1	414803X428	Wheel, Steering
2	195968	Axle Asm., Front
4	403087	Spindle Asm., LH
5	403088	Spindle Asm., RH
6	6266H	Bearing, Race Thrust Harden
7	121748X	Washer 25/32 x 1-5/8 x 16 Ga.
8	12000029	Ring, Klip #T5304-75
9	184946X505	Cap, Spindle
13	121749X	Washer 25/32 x 1-1/4 x 16 Ga.
14	STD551137	Washer, Lock Hvy Hlcl Spr 3/8
15	73540600	Nut, Crown Lock 3/8-24 unf
16	194746	Shaft Steering
19	194729	Plate Steering
20	199676X428	Boot, Steering
21	186737	Adapter, Wheel Steering
22	194845	Bushing, Strg. Blk
26	414852X428	Insert, Wheel Steering
28	17000612	Screw 3/8-16 x 3/4
35	194732	Gear, Sector Plate
45	19183812	Washer 9/16 x 2-3/8 x 12 Ga.
51	73940800	Nut Hex 1/2-20 unf
53	188967	Washer Hardened .793 x 1.637 x .060
57	407465	Bracket Upstop
58	194747	Bolt Shoulder Sector Pivot CFM
59	194748	Washer Thrust Sector Steering
60	73971000	Nut Flange Lock 5/8-11
61	194740	Draglink LH
62	194741	Draglink, RH
63	17000512	Screw 5/16-18 x 3/4
64	199849	Retainer Clip Spring Steering
66	71020748	Bolt Hex Fghd 7/16-14 x 3 Serr
67	194737	Bushing PM Front Axle
68	73900700	Nut Lock Flange 7/16-14 Gr. 5
69	199162	Washer 1.5 x .505 x .118
70	196197	Bracket Deck Susp. Front

NOTE: All component dimensions given in U.S. inches.
1 inch = 25.4 mm.

REPAIR PARTS

TRACTOR- -MODEL NO. 917.253690

SEAT ASSEMBLY



KEY NO.	PART NO.	DESCRIPTION
1	423645	Seat
2	180166	Bracket Pivot Fender
3	140675	Strap, Asm Fender
6	STD541437	Nut, Lock W/Ins. 3/8-16 unc
7	124181X	Spring, Seat Cprsn
8	171877	Bolt 5/16-18 uncx 3/4 w/Sems
10	196977	Pan, Seat
21	171852	Bolt, Shoulder 5/16-18

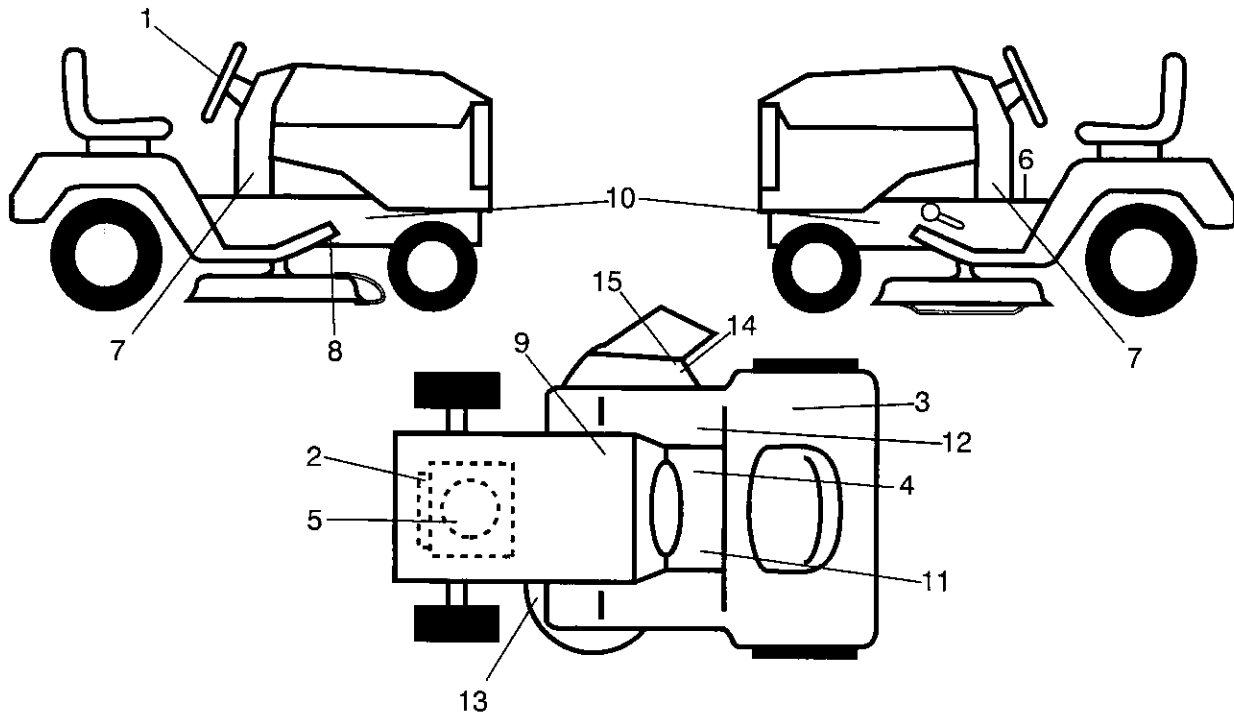
KEY NO.	PART NO.	DESCRIPTION
37	STD541431	Nut, Lock 5/16-18 unc
40	197661	Handle Slide Seat
41	198200	Spring Latch Seat
43	74760612	Bolt 3/8-16 x 3/4
44	19133812	Washer 13/32 x 2-3/8 x 12 Ga.

NOTE: All component dimensions given in U.S. inches.
1 inch = 25.4 mm

REPAIR PARTS

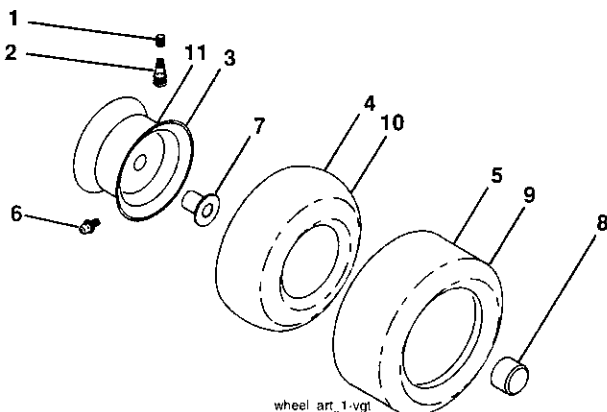
TRACTOR- -MODEL NO. 917.253690

DECALS



KEY NO.	PART NO.	DESCRIPTION	KEY NO.	PART NO.	DESCRIPTION
1	422885	Decal, Steering	13	160396	Decal, Mower V-Belt SCH.
2	196841	Decal, Warning Engine Sym.	14	196357	Decal, Deflector Wrn. Cutfinger Sym.
3	180432	Decal, Fender 100 DB/CE	15	182166	Decal, Cutfinger CE
4	178302	Decal, Operator Cruise Sym.	--	193226X428	Pad, Footrest LH
5	420133	Decal, Engine HP	--	400981X428	Pad, Footrest
6	400389	Decal, Fender Operator's	--	166960	Decal, Bypass
7	425787	Decal, Lower Dash	--	162598	Decal, Drawbar Load Limit
8	199135	Decal, V-Belt Schematic Drive	--	427571	Manual, Operator's (Euro)
9	145005	Decal, Battery Dnge/Poi	--	427572	Manual, Operator's (Scand)
10	159736	Decal, Chassis Hot Muffler	--	427573	Manual, Operator's (E-Bloc)
11	159737	Decal, Brake/Clutch Sym.	--	427574	Manual, Operator's (Baltic)
12	140837	Decal, Saddle Brake Parking	--	427205	Manual, Parts

WHEELS & TIRES



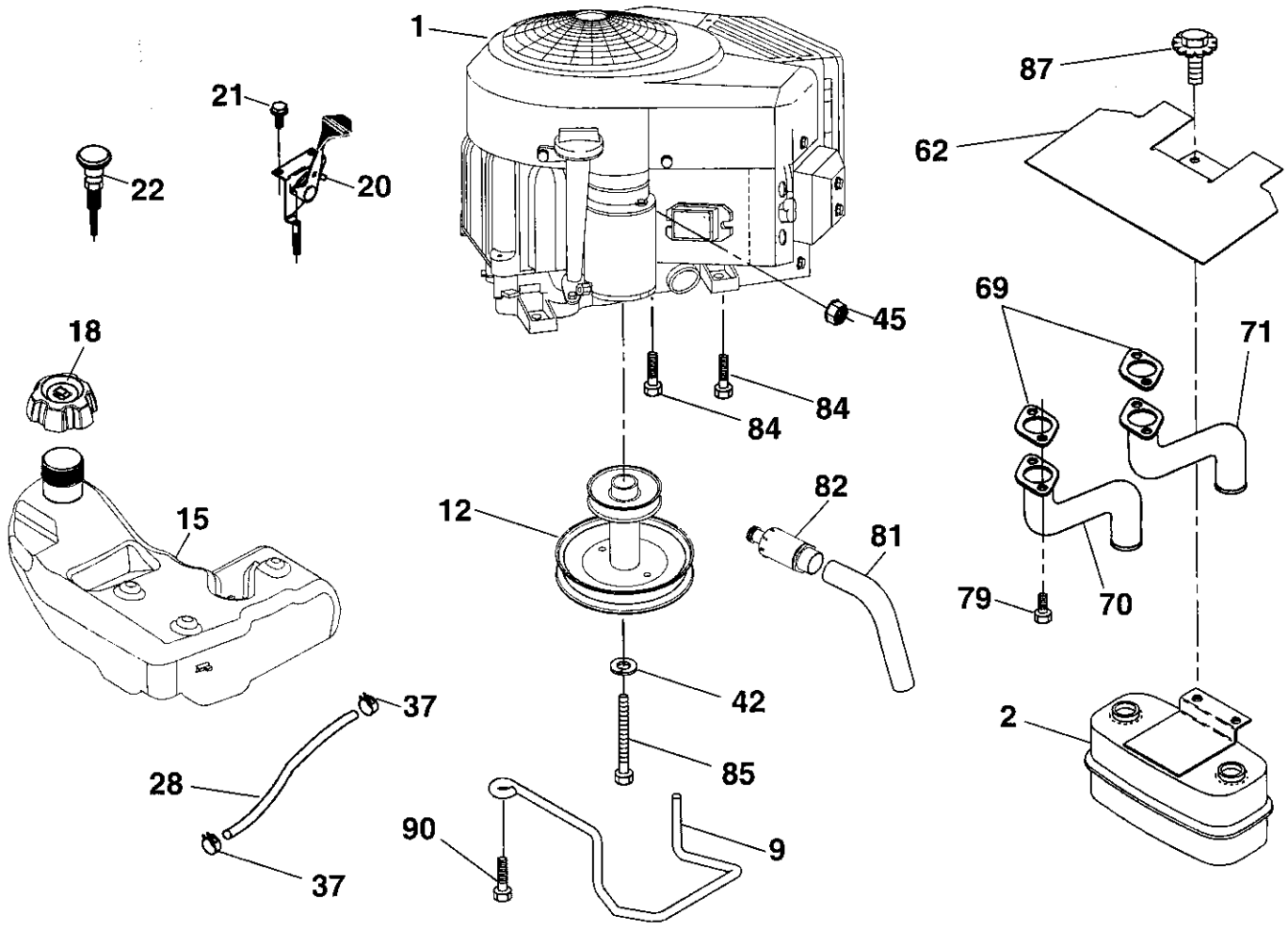
KEY NO.	PART NO.	DESCRIPTION
1	59192	Cap, Valve, Tire
2	65139	Stem, Valve
3	106732X613	Rim Assembly, Front
4	59904	Tube, Front
5	106222X	Tire, Front
6	278H	Fitting, Grease
7	9040H	Bearing, Flange
8	104757X428	Cap, Axle (Front Wheel Only)
9	420531	Tire, 18 x 9.5-8 TurfSaver LT
10	7152J	Tube, Rear
11	106108X613	Rim Assembly, Rear
--	144334	Sealant, Tire (10 oz. Tube)

NOTE: All component dimensions given in U.S. inches
1 inch = 25.4 mm

REPAIR PARTS

TRACTOR- -MODEL NO. 917.253690

ENGINE



29

SPARK ARRESTER KIT

engine-tex_bs-2cyl_13

REPAIR PARTS

TRACTOR- -MODEL NO. 917.253690

ENGINE

KEY NO.	PART NO.	DESCRIPTION
1	-----	Engine B&S Model No. 445677-1344-B1 (See Engine Breakdown)
2	149723	Muffler
9	194319	Keeper Belt Engine
12	405140	Pulley Engine
15	400021	Tank Fuel
18	195951	Cap Asm
20	175437X428	Control Throttle
21	416358	Screw 10 x .750 BOS Thread
22	187767X428	Control Choke
28	8543R	Fuel Line
29	137180	Spark Arrester Kit
37	123487X	Clamp Hose
42	10040700	Washer Lock 7/16
45	73510400	Nut Keps Hex 1/4-20 unc
62	146629	Shield Heat Muffler
69	165391	Gasket
70	159955	Exhaust Tube LH
71	160589	Exhaust Tube RH
79	183906	Screw 5/16-18 x .75
81	148456	Tube Drain Oil Easy
82	181654	Plug Drain Oil
84	17060620	Screw 3/8-16 x 1-1/4
85	173937	Bolt Hex 7/16-20 x 4 x Gr. 5-1.5
87	171877	Bolt 5/16-18 unc x 3/4 w/Sems
90	17000616	Screw 3/8-16 x 1.0

NOTE: All component dimensions given in U.S. inches
1 inch = 25.4 mm

For engine service and replacement parts, call the toll free number for your engine manufacturer listed below:

Briggs & Stratton 1-800-233-3723

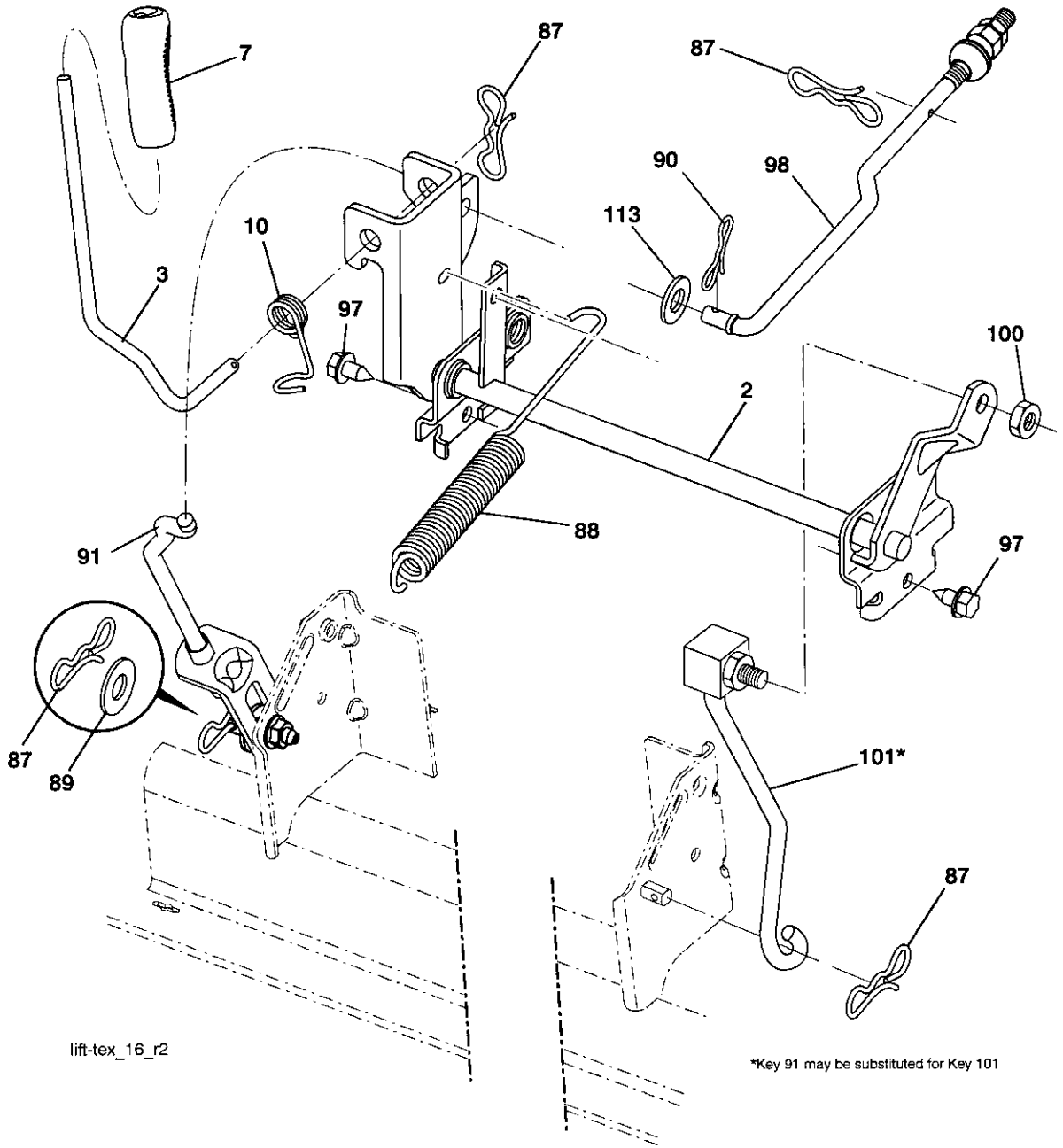
Engine Power Rating Information

The gross power rating for individual gas engine models is labeled in accordance with SAE (Society of Automotive Engineers) code J11940 (Small Engine Power & Torque Rating Procedure), and rating performance has been obtained and corrected in accordance with SAE J1995 (Revision 2002-5). Actual gross engine power will be lower and is affected by, among other things, ambient operating conditions and engine-to-engine variability. Given both the wide array of products on which engines are placed and the variety of environmental issues applicable to operating the equipment, the gas engine will not develop the rated gross power when used in a given piece of power equipment (actual "on-site" or net horsepower). This difference is due to a variety of factors including, but not limited to, accessories (air cleaner, exhaust, charging, cooling, carburetor, fuel pump, etc.), application limitations, ambient operating conditions (temperature, humidity, altitude), and engine-to-engine variability. Due to manufacturing and capacity limitations, Briggs & Stratton may substitute an engine of higher rated power for this Series engine.

REPAIR PARTS

TRACTOR- -MODEL NO. 917.253690

MOWER LIFT



lift-tex_16_r2

*Key 91 may be substituted for Key 101

REPAIR PARTS

TRACTOR- -MODEL NO. 917.253690

MOWER LIFT

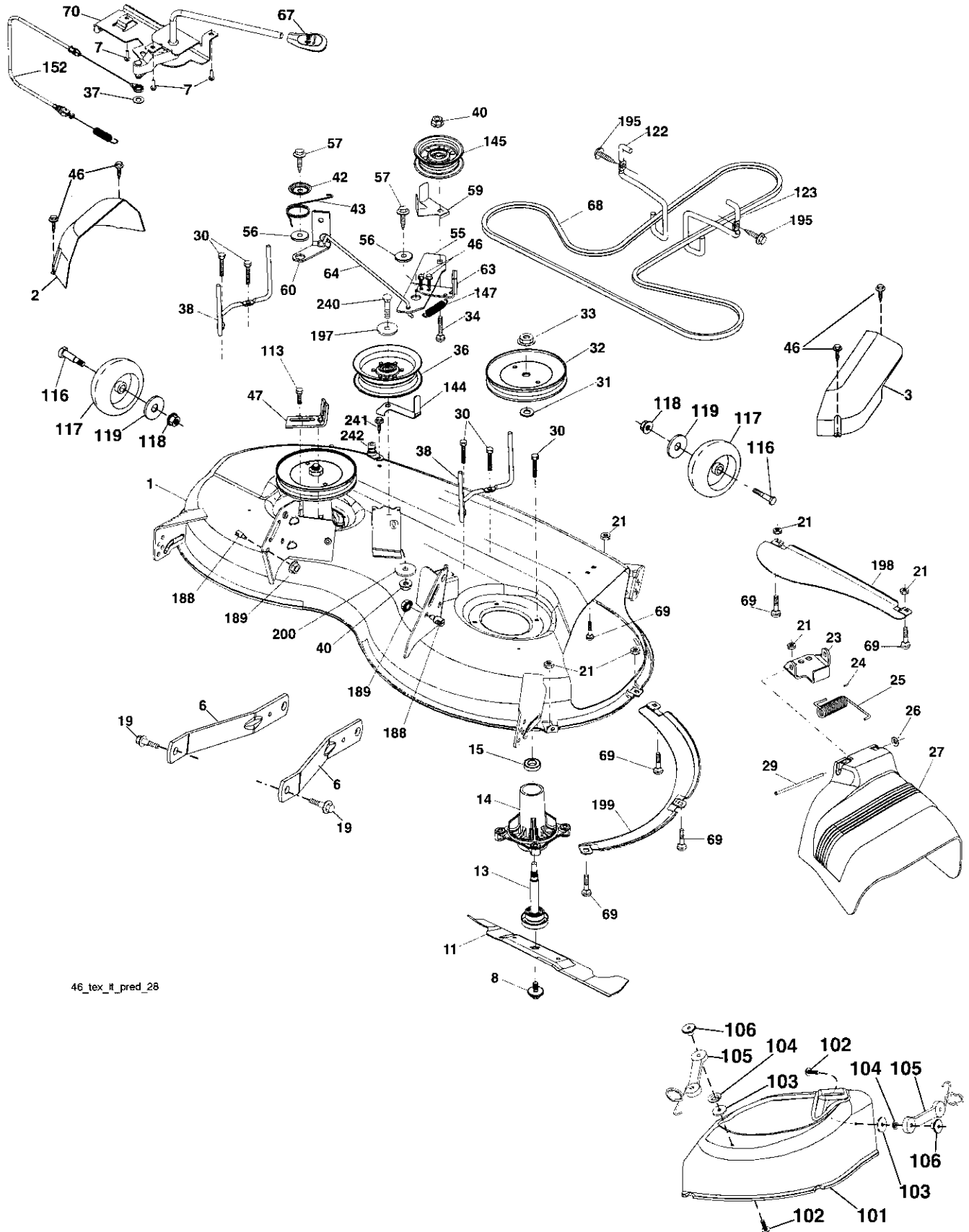
KEY NO.	PART NO.	DESCRIPTION
2	195223	Shaft Asm., Lift
3	195231	Lever Asm., Lift RH
7	196492X428	Grip, Lever
10	196314	Spring Torsion
87	194209	Pin Cotter 7/16 Bow Tie Lock
88	410710	Spring Lift Assist
89	19191912	Washer Clear Zinc
90	194208	Pin Cotter 5/16 Bow Tie Lock
91	195181	Link Lift Susp Mower Rear
97	17000612	Screw 3/8-16 x .75
98	195270	Link Lift Susp. Front Mower
100	73930600	Nut Centerlock 3/8-16 unc
101	407003	Link Asm. Lift FXD
113	19171912	Washer 17/32 X 1-3/16 X 12 Ga

NOTE: All component dimensions given in U.S. inches
1 inch = 25.4 mm

REPAIR PARTS

TRACTOR- -MODEL NO. 917.253690

MOWER



REPAIR PARTS

TRACTOR- -MODEL NO. 917.253690

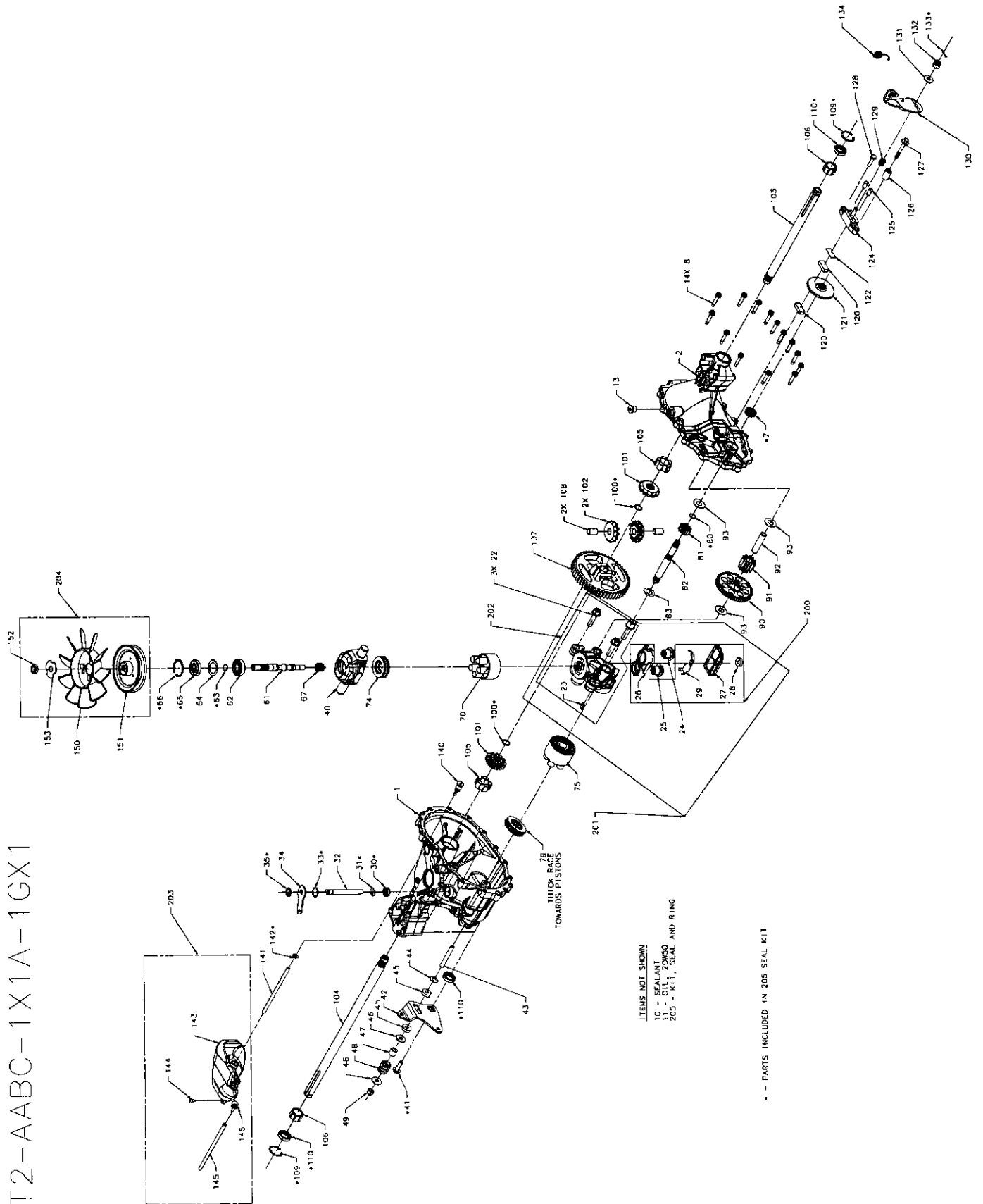
MOWER

KEY NO.	PART NO.	DESCRIPTION	KEY NO.	PART NO.	DESCRIPTION
1	405049X615	Mower Housing	69	72140505	Bolt
2	405507	Cover Mandrel LH	70	199972	Clutch Asm. Manual
3	405506	Cover Mandrel RH	101	405454	Cover Mulch 46"
6	195186	Arm Suspension	102	71081010	Screw Pan HD Phillip 10-24 x 5/8
7	416358	Screw #10 x 0.750 BOS Thread	103	10071000	Washer Lock #10
8	193003	Bolt/Washer Asm. 7/16-20 unf	104	19061216	Washer #10
11	403107	Blade Mulching	105	160793	Latch Asm.
13	192872	Shaft Assembly, Mandrel	106	2029J	Nut Weld .327/.304 #10-24
14	187281	Housing, Mandrel	113	17000510	Screw 5/16-18
15	110485X	Bearing, Ball, Mandrel	116	4898H	Bolt, Shoulder
19	196539	Bolt, Shoulder	117	188606	Wheel, Gauge
21	73680500	Nut	118	73930600	Nut, Crownlock 3/8-1
23	192557	Bracket, Deflector	119	19121414	Washer 13/32 x 7/8 x 14 Ga.
24	105304X	Cap, Sleeve	122	197258	Keeper Belt Eng. LH
25	197026	Spring, Torsion, Deflector	123	197259	Keeper Belt Eng. RH
26	110452X	Nut, Push	144	199204	Keeper Belt
27	405357	Shield, Deflector	145	193197	Pulley Idler
29	131491	Rod, Hinge	147	401872	Spring Return
30	173984	Screw Thdrol. Rolling Wsh. Hd.	152	408714	Cable Clutch Manual w/Spr.
31	187690	Washer, Spacer	188	195161	Stud Fastener
32	197473	Pulley, Mandrel	189	73900500	Nut Lock Hex Flange
33	400234	Nut, Toplock, Flanged	195	17000612	Screw Hex Wsh. Thdr. 3/8 -16 x 3/4
34	72110612	Bolt Carr. Sh. 3/8-16 x 1-1/2 Gr. 5	197	19131312	Washer 13/32 x 13/16 x 12 Ga.
36	197379	Pulley, Idler, Flat	198	403149	Baffle Center Front
37	19131316	Washer 13/32 x 13/16 x 16 Ga.	199	403150	Baffle Front RH
38	199189	Keeper Belt LH Mandrel	200	413524	Washer 13/32 x 1 x 1/2 x 11 Ga
40	73900600	Nut, Lock Flg. 3/8-16 unc	240	74520636	Bolt Fin. Hex 3/8-16 x 2-1/4 Gr. 5
42	197256	Spring Torsion Retainer	241	152927	Screw
43	198410	Spring Trosion Brake	242	415598	Port Washout
46	137729	Screw	--	416405	Coupling Quick Connect
47	197250	Bracket Clutch Cable	--	192870	Mandrel Assembly (Includes housing, shaft assembly, and bearing only - pulley/nut/washer and blade bolt/washers not included)
55	197249	Arm, Idler			Replacement Mower, Complete
56	199092	Spacer, Retainer			
57	17000616	Screw Hex Wsh. Thd. 3/8-16 x 1			
59	141043	Guard, Tuv. Idler (94)	--	427650	
60	199471	Arm Brake Mower			
63	199477	Arm Brake Mower			
64	405138	Linkage Brake			
67	198398X505	Handle, Clutch Cable			
68	405143	V-Belt			

NOTE: All component dimensions given in U.S. inches
1 inch = 25.4 mm

TRACTOR - - MODEL NUMBER 917.253690
HYDRO GEAR TRANSAXLE - MODEL NUMBER T2

T2-AABC-1X1A-1GX1



TRACTOR - - MODEL NUMBER 917.253690

HYDRO GEAR TRANSAXLE - MODEL NUMBER T2

KEY NO.	PART NO.	DESCRIPTION	KEY NO.	PART NO.	DESCRIPTION
1	412015	Kit, Hsg, Main	100	170393	Ring, Ret - Spiral .625 Ext
2	412016	Kit, Hsg, Side	101	401260	Gear, Bevel 12T Spillne Id
7	422987	Seal, Lip .50x1.0x.25 TC	102	401261	Gear, Bevel 12T .50 ID
8	170356	HFHCS 1/4-20 X 1 .25"	103	170391	Shaft, Axle, Keyed, 11.39 x 0.75
10	178322	Sealant	104	170392	Shaft, Axle, Keyed, 16.99 x 0.75
11	N/A	Oil, 20w50	105	412052	Bushing, Inboard
13	170434	Plug 9/16-18 (Metal)	106	412053	Bushing, Outboard
22	412022	Bolt, Hex Flange. 3/8-16, C/S	107	412054	Gear, 53T Bull
23	412023	Plate, Bypass	108	421055	Pin, Differential
24	170420	Assembly, Check Plug w/Washer .027	109	412056	Ring, Ret, Int Axle
25	412024	Assembly, Check Plug w/Washer, 027, Spring	110	142961	Seal, Lip .75 x 1.125 x .25 TC
26	412025	Base, Filter	120	142883	Puck, Brake
27	412026	Cover, Filter	121	412057	Rotor, Brake
28	170395	Ring, Magnet	122	142882	Plate, Puck
29	412027	Deflector	124	142929	Yoke, Brake
30	412028	Seal, Lip.375x.75x.25 TC	125	142887	Pin, Brk .31 x .73 Plated
31	412029	Ring, Ret .375 Ext	126	161174	Spacer .26 x .57 x .87
32	412030	RoD, Actuator Bypass	127	170410	Hfhcs 1/4-20 x 2.0 w/Patch
33	412031	Ring, Ret .750 Int	128	142892	HHCS 1/4-20 x 1 (Patch)
34	412032	Arm, Bypass	129	161181	Spring, Comp Brake Anti-Drag
35	412033	Ring, Ret .375 Ext	130	142954	Arm, Brake
40	412034	Trunnion. Swash Plate	131	142884	Washer .34 x .88 x .06
41	412035	Screw 5/16-18 x 1	132	142885	Nut, Castle 5/16-24 Pl
42	412036	Arm, Cntrl	133	142886	Pin, Cotter 3/32 x 3/4
43	412037	Screw. Set 3/16-24 X 2.50	134	189386	Spring, Brake Arm Bias
44	412038	Washer, Belleville	140	170425	5/16 SAE, 5/32 Tube
45	412039	Washer,Plastic, .32 x .80 x .21	141	412058	Hose
46	142884	Washer .34 x .88 x .06	142	170435	O-Ring .103 x .299 ID
47	142980	Spacer .32 x .59 x .50	143	412059	Tank, Expansion
48	142969	Spring, Helical Comp	144	422988	Bolt, Self-Tapping 10-32 x 1/2
49	150778	Nut, Hex 5/16-24 Nylon Lnsert	145	412058	Hose
61	412040	Shaft, Lnput	146	401264	Cap, Barbed Vent
62	142934	Ball Bear L Ng 15 x 35 x 11	150	170439	Fan, 7', 10 Blade
63	142928	Ring, Ret Wire .512 ID	151	412061	Pulley, Flanged, 4.13"
64	161125	Washer 1.23 x 1.56 x .04	152	170441	Nut, Hex Lock, 1/2-20 (Nylon Insert)
65	142932	Seal, Lip 15 x 35 x 7	153	170442	Washer,Odslotted .53 x 1.63 x .06
66	142933	Ring, Ret 1.56 Int	200	412062	Kit, Filter
67	412041	Spring, Helical	201	412063	Kit, Center Section W/Filter
70	412042	Kit, Block, Cyl 8cc	202	412064	Kit, Center Section
74	412043	Brg, Thrust Ball 27 x 47 x 14	203	412065	Kit, Tank Expansion
75	169898	Kit, Block, Cyl 10cc Rm	204	412066	Kit, Fan & Pulley
79	150771	Brg, Thrust Ball 30 x 52 x 13	205	412067	Kit, Seal
80	412044	Ring, Ret .50 Ext			
81	412045	Gear, 13T Pinion			
82	412046	Shaft, Motor			
83	412047	Washer .60 x 1.00 x .03			
90	412048	Gear, 11T/48T			
91	412049	Gear, Jackshaft 11T			
92	412050	Jack Shaft (P1N)			
93	170418	Washer .51 x 1.10 x .03			

NOTE: All component dimensions given in U.S. inches
1 inch = 25.4 mm

REPAIR PARTS

TRACTOR- -MODEL NO. 917.253690

BRIGGS & STRATTON ENGINE - - MODEL NUMBER 445677, TYPE NUMBER 1344-B1

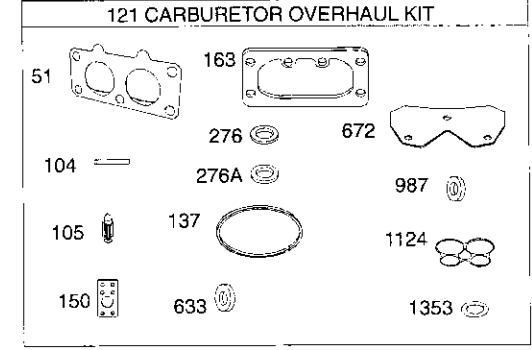
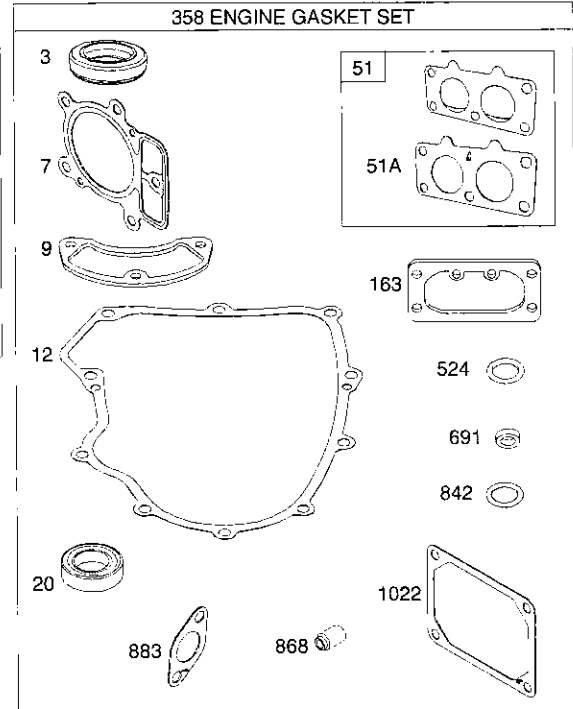
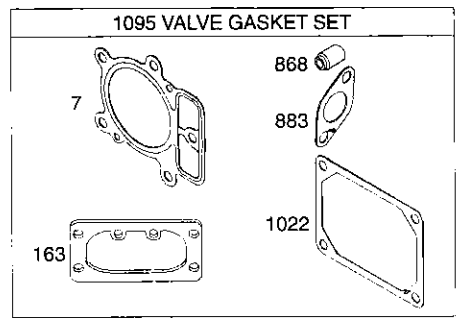
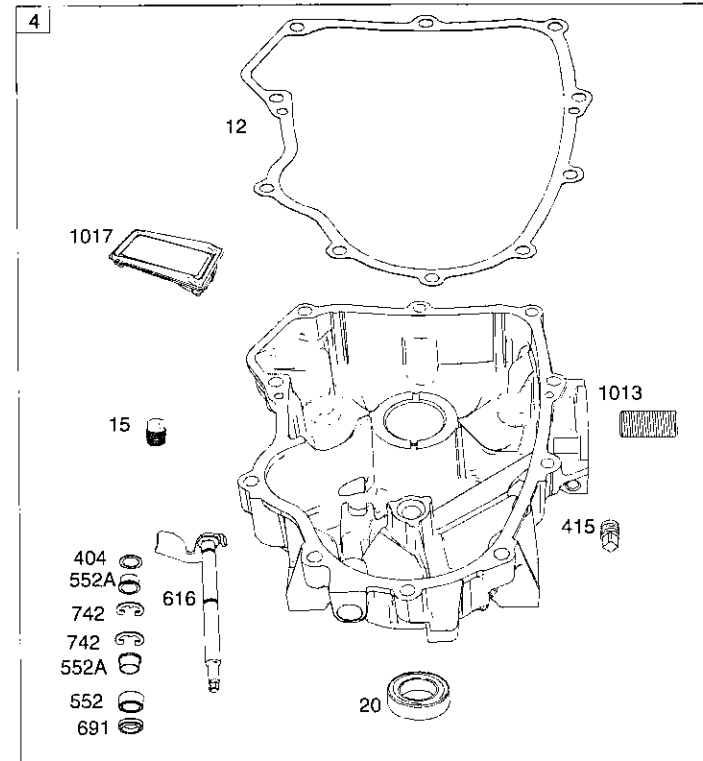
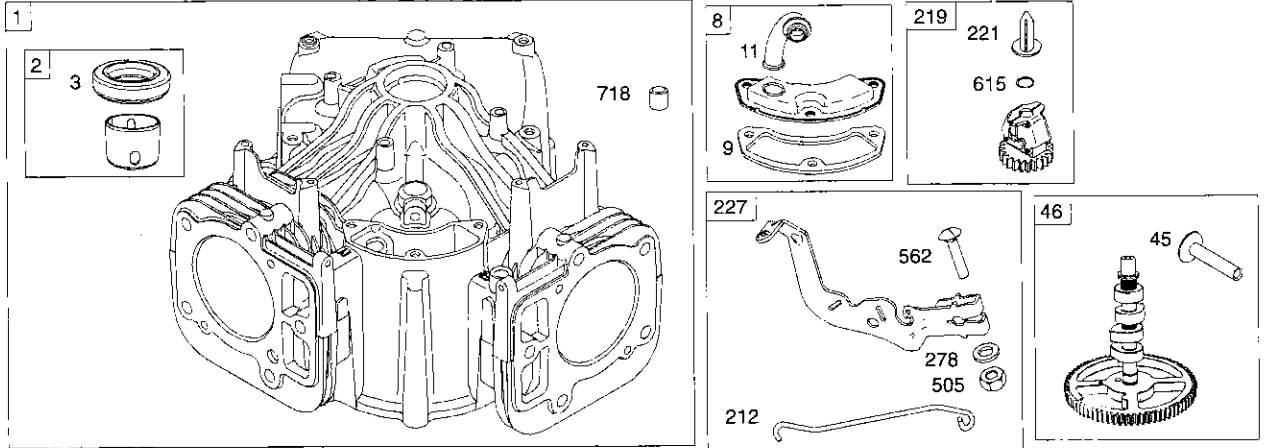
48 SHORT BLOCK

1058 OPERATOR'S MANUAL

1329 REPLACEMENT ENGINE

1330 REPAIR MANUAL

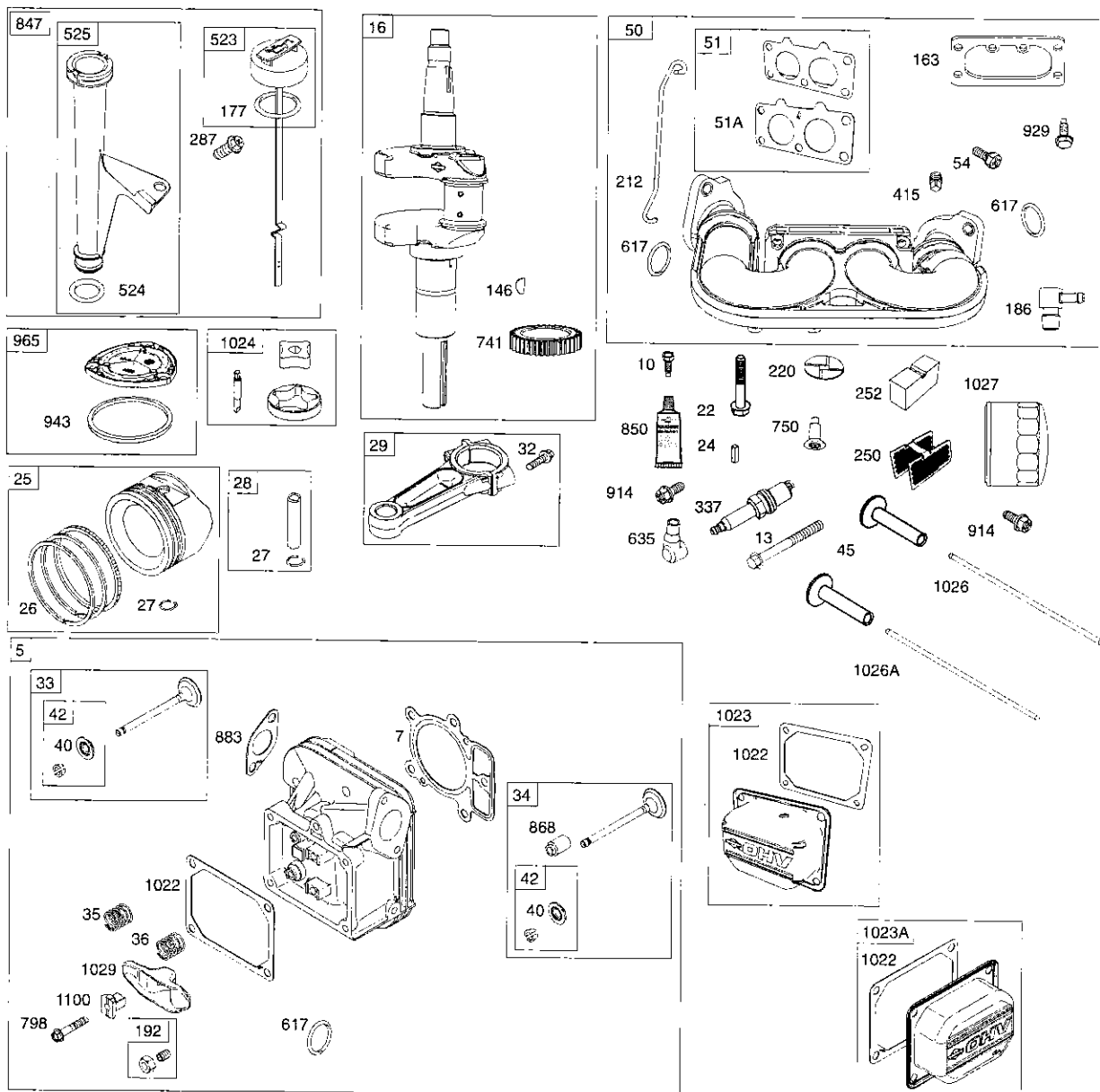
LIQUID GASKET AND THE BREATHER GASKET ARE INTERCHANGEABLE



REPAIR PARTS

TRACTOR- -MODEL NO. 917.253690

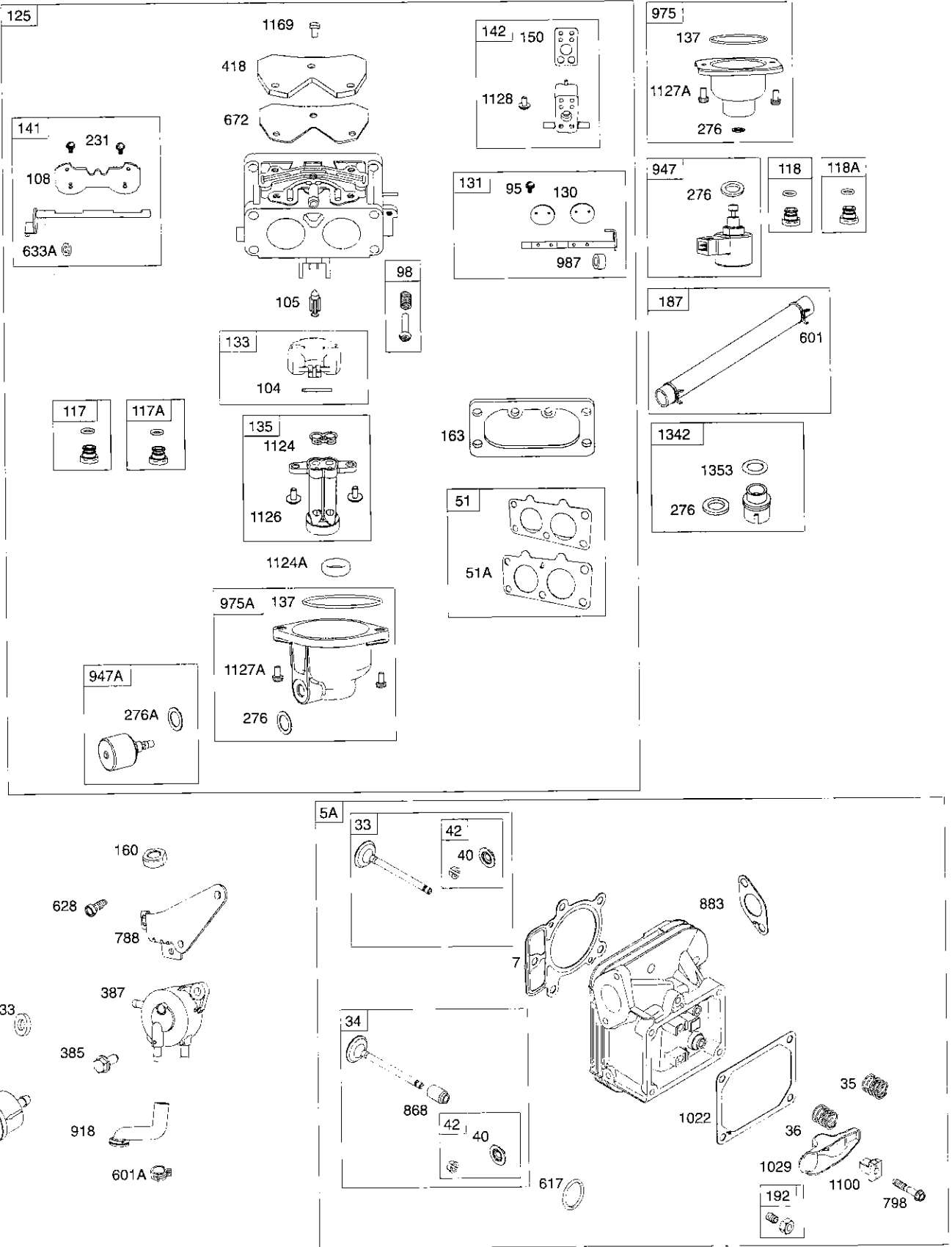
BRIGGS & STRATTON ENGINE - - MODEL NUMBER 445677, TYPE NUMBER 1344-B1



REPAIR PARTS

TRACTOR- -MODEL NO. 917.253690

BRIGGS & STRATTON ENGINE - - MODEL NUMBER 445677, TYPE NUMBER 1344-B1



REPAIR PARTS

TRACTOR- -MODEL NO. 917.253690

BRIGGS & STRATTON ENGINE - - MODEL NUMBER 445677, TYPE NUMBER 1344-B1

KEY NO.	PART NO.	DESCRIPTION	KEY NO.	PART NO.	DESCRIPTION
1	793564	Cylinder Assembly	135	699729	Tube-Fuel Transfer
2	499585	Bushing/Seal Kit (Magneto Side)	137	♣ 690994	Gasket-Float Bowl
3	• 391086s	Seal-Oil (Magneto Side)	141	699722	Kit-Choke Shaft
4	796230	Sump-Engine	142	699726	Nozzle-Carburetor
5	796231	Head-Cylinder (Cylinder #1)	146	690979	Key-Timing
5A	796232	Head-Cylinder (Cylinder #2)	150	690995	Gasket-Nozzle
7	♦♦ 693997	Gasket-Cylinder Head	160	699727	Retainer-Solenoid (Brass) (Original Carburetor)
8	792185	Breather Assembly			
9	• 690937	Gasket-Breather (Liquid Gasket and The Breather Gasket Are Interchangeable)	163	691001	Gasket-Air Cleaner
10	697551	Screw (Breather Assembly)	177	691031	Seal-O Ring (Dipstick)
11	792184	Tube-Breather	187	791766	Line-Fuel (Cut to Required Length)
12	• 697227	Gasket-Crankcase	188	697551	Screw (Control Bracket)
13	793988	Screw (Cylinder Head)	192	690083	Adjuster-Rocker Arm
15	690946	Plug-Oil Drain	197	697820	Screw (Back Plate)
16	796540	Crankshaft	209	796224	Spring-Governor (Yellow/Black)
20	• 795387	Seal-Oil (PTO Side)	211	796225	Spring-Governed Idle (Orange)
22	694966	Screw (Crankcase Cover/Sump)	212	695238	Link-Throttle
23	691054	Flywheel	213	691021	Bracket-Choke Control
24	222698s	Key-Flywheel	216	691022	Link-Choke
25	792023	Piston Assembly (Standard)	219	793338	Gear-Governor
	792072	Piston Assembly (.020" Oversize)	220	690412	Washer (Governor Gear)
26	793561	Ring Set (Standard)	221	841026	Cup-Governor
	792073	Ring Set (.020" Oversize)	222	796630	Bracket-Control
27	690975	Lock-Piston Pin	227	796223	Lever-Governor Control
28	696581	Pin-Piston	231	690718	Screw (Choke Valve)
29	699699	Rod-Connecting	240	691035	Filter-Fuel
32	690976	Screw (Connecting Rod)	250	690957	Retainer-Breather
33	697576	Valve-Exhaust	252	794389	Collector-Oil
34	792200	Valve-Intake	265	691024	Clamp-Casing
35	694865	Spring-Valve (Intake)	267	792629	Screw (Casing Clamp)
36	694865	Spring-Valve (Exhaust)	276	794271	Washer-Sealing (Aluminum)
40	690964	Retainer-Valve	276A	695410	Washer-Sealing (Used On Service Carburetor)
42	499586	Keeper-Valve	278	792651	Washer (Governor Control Lever)
45	690977	Tappet-Valve	287	697551	Screw (Dipstick Tube)
46	792555	Camshaft	304	796597	Housing-Blower
48	698172	Short Block	305	691005	Screw (Blower Housing)
50	695241	Manifold-Intake	305A	698336	Screw (Blower Housing)
51	♦♦♣ 795123	Gasket-Intake	305B	790690	Screw (Blower Housing) (Blower Housing to Intake Elbow)
51A	♦♦♣ 690950	Gasket-Intake	309	499521	Motor-Starter
53	690951	Stud (Carburetor)	310	691263	Screw (Starter Motor)
54	699816	Screw (Intake Manifold)	332	691059	Nut (Flywheel)
73	494439	Screen-Rotating	333	691060	Armature-Magneto
74	698425	Screw (Rotating Screen)	334	691061	Screw (Magneto Armature)
75	691056	Washer (Flywheel)	337	691043	Plug-Spark
95	690718	Screw (Throttle Valve)	358	694012	Gasket Set-Engine
98	699721	Kit-Idle Speed	385	697551	Screw (Fuel Pump)
104	♣ 694918	Pin-Float Hinge	387	808656	Pump-Fuel
105	♣ 698537	Valve-Float Needle	404	690442	Washer (Governor Crank)
--	699723	Valve-Choke	415	794903	Plug (Oil Pressure Switch Hole)
117	791501	Jet-Main (Standard) (Left)	415A	690283	Plug (Intake Manifold)
117A	791502	Jet-Main (Standard) (Right)	418	795912	Plate-Carburetor
118	695415	Jet-Main (High Altitude) (Left)	431	790816	Elbow-Intake
118A	843099	Jet-Main (High Altitude) (Right)	445	499486s	Filter-Air Cleaner Cartridge
121	792455	Kit-Carburetor Overhaul	447	691003	Screw (Air Guide Cover) (Long)
125	791230	Carburetor	447A	697551	Screw (Air Guide Cover) (Short)
130	690993	Valve-Throttle	462	691261	Washer (Starter Cable)
131	499805	Kit-Throttle Shaft	467	691008	Knob-Air Cleaner
133	699724	Float-Carburetor	474	696459	Alternator

REPAIR PARTS

TRACTOR- -MODEL NO. 917.253690

BRIGGS & STRATTON ENGINE - - MODEL NUMBER 445677, TYPE NUMBER 1344-B1

KEY NO.	PART NO.	DESCRIPTION	KEY NO.	PART NO.	DESCRIPTION
505	691029	Nut (Governor Control Lever)	965	796221	Cover-Oil Pump
510	696541	Drive-Starter	967	273638s	Filter-Pre Cleaner
513	692024	Clutch-Drive	968	791242	Cover-Air Cleaner
523	691036	Dipstick	975	499810	Bowl-Fuel
524	• 691032	Seal-Dipstick Tube	975A	793592	Bowl-Fuel (Used On Service Carburetor)
525	691037	Tube-Dipstick	987	♣ 691000	Seal-Throttle Shaft
544		Armature-Starter (Service by 499521 Starter Motor Only, Reference 309)	1005	791236	Fan-Flywheel
552	690552	Bushing-Governor Crank	1013	690954	Nipple-Oil Filter
552A	690553	Bushing-Governor Crank	1017	796214	Screen-Oil Pump
562	690311	Screw (Governor Control Lever)	1022	♦• 690971	Gasket-Rocker Cover (Liquid Gasket and Rocker Cover Gasket are interchangeable)
573	790444	Plate-Back	1023	793146	Cover-Rocker (Cylinder #1)
601	791850	Hose-Clamp (Green)	1023A	499600	Cover-Rocker (Cylinder #2)
601A	691038	Hose-Clamp (Black)	1024	796220	Pump-Oil
615	698290	Retainer-Governor Shaft	1026	690981	Rod-Push (Steel)
616	691045	Crank-Governor	1026A	690982	Rod-Push (Aluminum)
617	♣• 697891	Seal-O Ring (Intake Manifold) (Red)	1027	492932s	Filter-Oil
628	697551	Screw (Fuel Pump Bracket)	1029	690972	Arm-Rocker
633	699813	Seal-Choke/Throttle Shaft (Choke Shaft)	1036		Label-Emissions (Available from a Briggs & Stratton Authorized Dealer)
633A	690998	Seal-Choke/Throttle Shaft (Choke Shaft)	1040	791237	Plate-Trim
635	66538s	Boot-Spark Plug	1051	691265	Ring-Retaining
654	690958	Nut (Carburetor)	1054	280275	Tie-Cable
668	691215	Spacer (Rotating Screen)	1058	276245	Operator's Manual
672	690234	Gasket-Carburetor Plate	1059	698516	Kit-Screw/Washer
691	• 790574	Seal-Governor Shaft	1070	791680	Screw (Flywheel Fan)
697	690372	Screw (Drive Cap)	1090	691293	Retainer-Brush
703	691010	Clip	1095	694013	Gasket Set-Valve
718	690959	Pin-Locating	1000	791959	Pivot-Rocker Arm
741	690980	Gear-Timing	1119	691183	Screw (Alternator)
742	690328	Retainer-E Ring	1124	690988	Seal-O Ring (Fuel Transfer Tube)
750	796208	Screw (Oil Pump Cover)	1124A	842653	Seal-O Ring (Fuel Transfer Tube) (Used On Service Carburetor)
783	695708	Gear-Pinion	1126	690991	Screw (Fuel Transfer Tube)
788	793145	Bracket-Fuel Pump	1127	690992	Screw (Float Bowl) (M5x10mm)
789	698330	Harness-Wiring	1127A	695407	Screw (Float Bowl) (Used On Service Carburetor) (M5x16mm)
798	697890	Screw (Rocker Arm)	1128	690990	Screw (Carburetor Nozzle)
801	691283	Cap-Drive	1169	690990	Screw (Carburetor Cover Plate)
802	691286	Cap-End	1329	44Q7770037G1	Replacement Engine
803		Housing-Starter (Service by 499521 Starter Motor Only, Reference 309)	1330	273521	Repair Manual
847	499602	Dipstick/Tube Assembly	1342	699731	Extension-Fuel Transfer Tube (Original Carburetor)
850	100106	Sealant-Liquid (Used to Seal Breather Assembly and Rocker Cover)	1353	699725	Seal-O Ring (Fuel Transfer Tube Extension)
851	493880s	Terminal-Spark Plug			
865	691012	Cover-Air Guide (Cylinder #1)			
865A	796541	Cover-Air Guide (Cylinder #2)			
865B	691015	Cover-Air Guide (Cylinder #3)			
868	♦• 690968	Seal-Valve			
877	• 790544	Wire/Connector-Alternator			
883	• 690970	Gasket-Exhaust			
914	691127	Screw (Rocker Cover)			
918	793147	Hose-Vacuum			
929	695239	Screw (Choke Control Bracket)			
943	• 796222	Seal-O Ring (Oil Pump Cover)			
947	699728	Solenoid-Fuel (Original Carburetor)			
947A	841546	Solenoid-Fuel (Used On Service Carburetor)			

♣Included in Engine Gasket Set, Key. No. 358

♦•Included in Valve Gasket Set, Key No. 1095

♣Included in Carburetor Overhaul Kit, Key, No. 121

NOTE: All component dimensions given in U.S. inches
1 inch = 25.4 mm

SERVICE NOTES

LIMITED WARRANTY ON CRAFTSMAN RIDING EQUIPMENT

For two (2) years from the date of purchase, if this Craftsman Riding Equipment is maintained, lubricated and tuned up according to the instructions in the owner's manual, Sears will repair or replace free of charge any parts that are found to be defective in material or workmanship according to the guidelines of coverage listed below. Sears will also provide free labor for these applicable warranted parts for the two full years. During the first 30 days of purchase, there will be no charges to service the product at your home for issues covered by this warranty. (See exclusions below). For your convenience, IN HOME warranty service will still be available after the first 30 days of purchase, but a trip charge will apply. This charge will be waived if the Craftsman product is dropped off at an authorized Sears location. For the nearest authorized Sears location, please call 1-800-4-MY-HOME®. This warranty applies only while this product is within the United States.

This Warranty does not cover:

- Expendable items which become worn during normal use, including but not limited to blades, spark plugs, air cleaners, belts, and oil filters.
- Standard Maintenance Servicing, oil changes, or tune-ups
- Tire replacement or repair caused by punctures from outside objects, such as nails, thorns, stumps, or glass.
- Repairs necessary because of operator abuse, including but not limited to, damage caused by towing objects beyond the capability of the riding equipment, impacting objects that bend the frame or crankshaft, or over-speeding the engine.
- Repairs necessary because of operator negligence, including but not limited to, electrical and mechanical damage caused by improper storage, failure to use the proper grade and amount of engine oil, failure to keep the deck clear of flammable debris, or failure to maintain the equipment according to the instructions contained in the owner's manual.
- Engine (fuel system) cleaning or repairs caused by fuel determined to be contaminated or oxidized (stale). In general, fuel should be used within 30 days of its purchase date.
- Normal deterioration and wear of the exterior finishes, or product label replacement.
- Riding equipment used for commercial or rental purposes.

LIMITED WARRANTY ON BATTERY

For ninety (90) days from date of purchase, if any battery included with this riding equipment proves defective in material or workmanship and our testing determines the battery will not hold a charge, Sears will replace the battery at no charge. During the first 30 days of purchase, there will be no charges to replace the battery at your HOME. After the first 30 days, for your convenience, IN-HOME warranty service will still be available but a trip charge will apply. This charge will be waived if the Craftsman product is dropped off at an authorized Sears location. For the nearest authorized Sears location, please call 1-800-4-MY-HOME®.

This battery warranty applies only while this product is within the United States.

This warranty gives you specific legal rights, and you may also have other rights, which vary, from state to state.

Sears, Roebuck and Co., Dept. 817WA, Hoffman Estates, IL 60179

CRAFTSMAN®