

SEARS

**OWNERS
MANUAL**

**MODEL NO.
917.254244**

**Caution:
Read and Follow
All Safety Rules
And Instructions
Before Operating
This Equipment**



CRAFTSMAN

**LT 12 HP ELECTRIC START
6 SPEED - 38" MOWER
LAWN TRACTOR**

- **Assembly**
- **Operation**
- **Maintenance**
- **Repair and Adjustment**
- **Repair Parts**

SAFETY RULES

1. Know the controls and how to stop quickly. READ THIS OPERATOR'S MANUAL and instructions furnished with attachments.
2. Do not allow children to operate the machine. Do not allow adults to operate it without proper instruction.
3. Do not carry passengers. Do not mow when children and others are around.
4. Always wear substantial footwear. Do not wear loose fitting clothing that could get caught in moving parts.
5. Keep your eyes and mind on your tractor, mower and the area being cut. Do not let other interests distract you.
6. Do not attempt to operate your tractor or mower when not in the drivers seat.
7. Always get on or off your tractor from the operator's left hand side.
8. Clear the work area of objects (wire, rocks, etc.) which might be picked up and thrown.
9. Disengage all attachment clutches before attempting to start the engine.
10. Disengage power to attachments and stop the engine before leaving the operator's position.
11. Disengage power to mower, stop the engine and disconnect spark plug wire(s) from spark plug(s) before cleaning, making an adjustment or repair. Be careful to avoid touching hot muffler or engine components.
12. Disengage power to attachments when transporting or not in use.
13. Take all possible precautions when leaving the vehicle unattended. Disengage the power-take-off, lower the attachments, shift into neutral, set the parking brake, stop the engine and remove the key.
14. Do not stop or start suddenly when going, uphill or downhill. Mow up and down the face of slopes (not greater than 15°); never across the face. Refer to page 47.
15. Reduce speed on slopes and make turns gradually to prevent tipping or loss of control. Exercise extreme caution when changing direction on slopes.
16. While going up or down slopes, place Gear Shift Control Lever in 1st gear position to negotiate the slope without stopping.
17. Never mow in wet or slippery grass, when traction is unsure or at a speed which could cause a skid.
18. Stay alert for holes in the terrain and other hidden hazards. Keep away from drop-offs.
19. Do not drive too close to creeks, ditches and public highways.
20. Exercise special care when mowing around fixed objects in order to prevent the blades from striking them. Never deliberately run tractor or mower into or over any foreign objects.
21. Never shift gears until tractor comes to a stop.
22. Never place hands or feet under the mower, in discharge chute or near any moving parts while tractor or mower are running. Always keep clear of discharge chute.
23. Use care when pulling loads or using heavy equipment.
 - a. Use only approved drawbar hitch points.
 - b. Limit loads to those you can safely control.
 - c. Do not turn sharply. Use care when backing.
 - d. Use counterweight or wheel weights when suggested in the owner's manual.
24. Watch out for traffic when crossing or near roadways.
25. When using any attachments, never direct discharge of material toward bystanders nor allow anyone near the vehicle while in operation.
26. Handle gasoline with care - it is highly flammable.
 - a. Use approved gasoline containers .
 - b. Never remove the fuel cap of the fuel tank or add gasoline to a running or hot engine or an engine that has not been allowed to cool for several minutes after running. Never fill tank indoors, always clean up spilled gasoline.
 - c. Open doors if the engine is run in the garage - exhaust fumes are dangerous. Do not run the engine indoors.
27. Keep the vehicle and attachments in good operating condition, and keep safety devices in place and working.
28. Keep all nuts, bolts and screws tight to be sure the equipment is in safe working condition.
29. Never store the equipment with gasoline in the tank inside a building where fumes may reach an open flame or spark. Allow the engine to cool before storing in any enclosure.
30. To reduce fire hazard, keep the engine free of grass, leaves or excessive grease. Do not clean product while engine is running.
31. Except for adjustments; DO NOT operate Engine if air cleaner or cover directly over carburetor air intake is removed. Removal of such part could create a fire hazard.
32. Do not operate without a muffler or tamper with exhaust system. Damaged mufflers or spark arresters could create a fire hazard. Inspect periodically and replace if necessary.
33. The vehicle and attachments should be stopped and inspected for damage after striking a foreign object and the damage should be repaired before restarting and operating the equipment.
34. Do not change the engine governor settings or overspeed the engine; severe damage or injury may result.
35. When using the vehicle with mower, proceed as follows;
 - a. Mow only in daylight or in good artificial light.
 - b. Shut the engine off when unclogging chute.
 - c. Check the blade mounting bolts for proper tightness at frequent intervals.
36. Do not operate the mower without the deflector shield in place.
37. Disengage power to mower before backing up. Do not mow in reverse unless absolutely necessary and then only after careful observation of the entire area behind the mower.
38. Under normal usage the grass catcher bag material is subject to deterioration and wear. It should be checked frequently for bag replacement. Replacement bags should be checked to ensure compliance with the original manufacturer's recommendations or specifications.



LOOK FOR THIS SYMBOL TO POINT OUT IMPORTANT SAFETY PRECAUTIONS.
IT MEANS--ATTENTION! BECOME ALERT! YOUR SAFETY IS INVOLVED.

CAUTION: LOOK FOR THIS WORD TO POINT OUT IMPORTANT EQUIPMENT PRECAUTIONS.

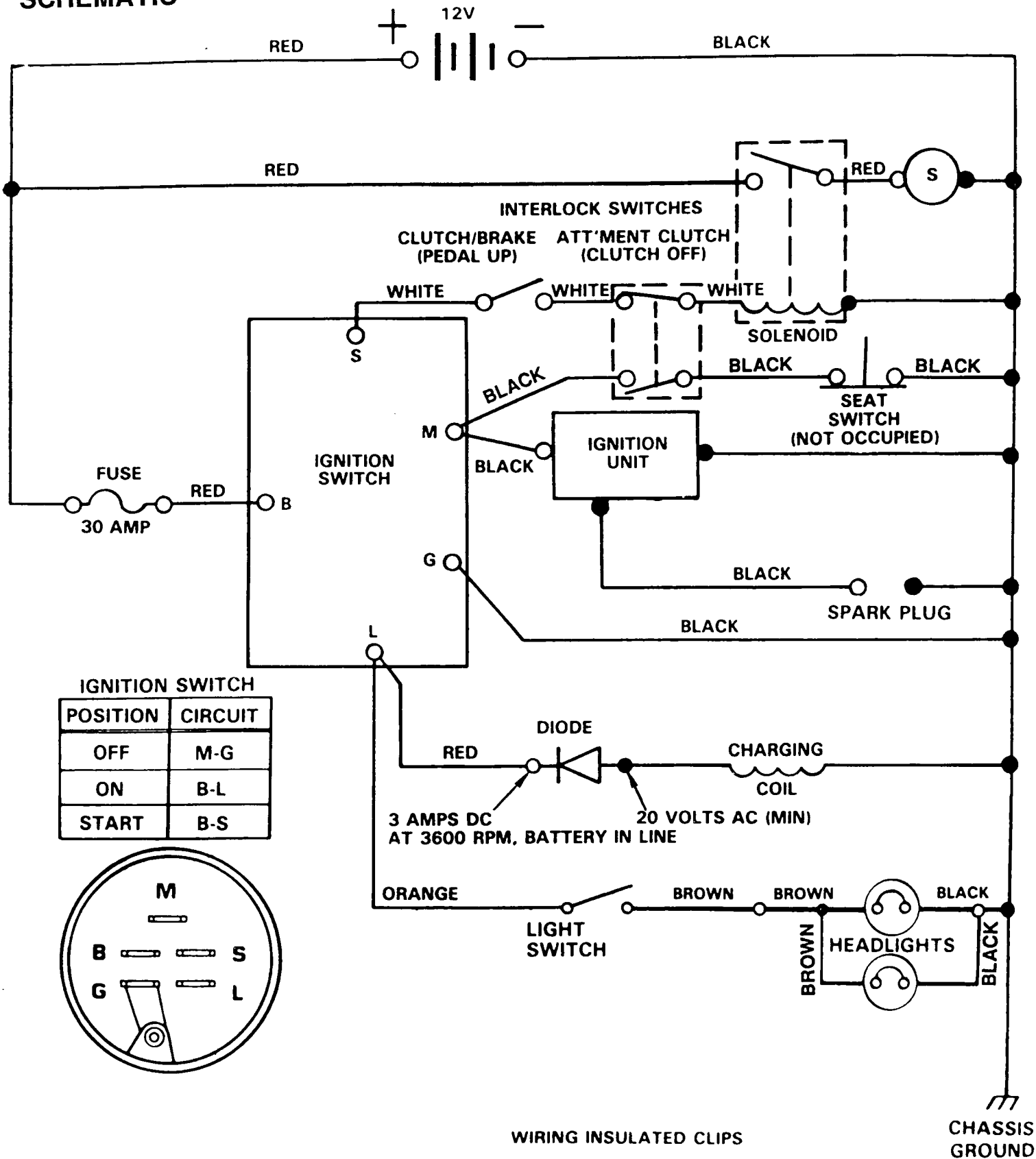


THIS UNIT IS EQUIPPED WITH AN INTERNAL COMBUSTION ENGINE AND SHOULD NOT BE USED ON OR NEAR ANY UNIMPROVED FOREST COVERED, BRUSH COVERED, OR GRASS COVERED LAND UNLESS THE ENGINE'S EXHAUST SYSTEM IS EQUIPPED WITH A SPARK ARRESTER MEETING APPLICABLE LOCAL OR STATE LAWS (IF ANY). IF A SPARK ARRESTER IS USED, IT SHOULD BE MAINTAINED IN EFFECTIVE WORKING ORDER BY THE OPERATOR.

In the State of California the above is required by law (Section 4442 of the California Public Resources Code). Other states may have similar laws. Federal laws apply on federal lands. Refer to the Repair Parts Section, page 32.

12 H.P. 38" RIDING LAWN TRACTOR--MODEL NUMBER 917.254244

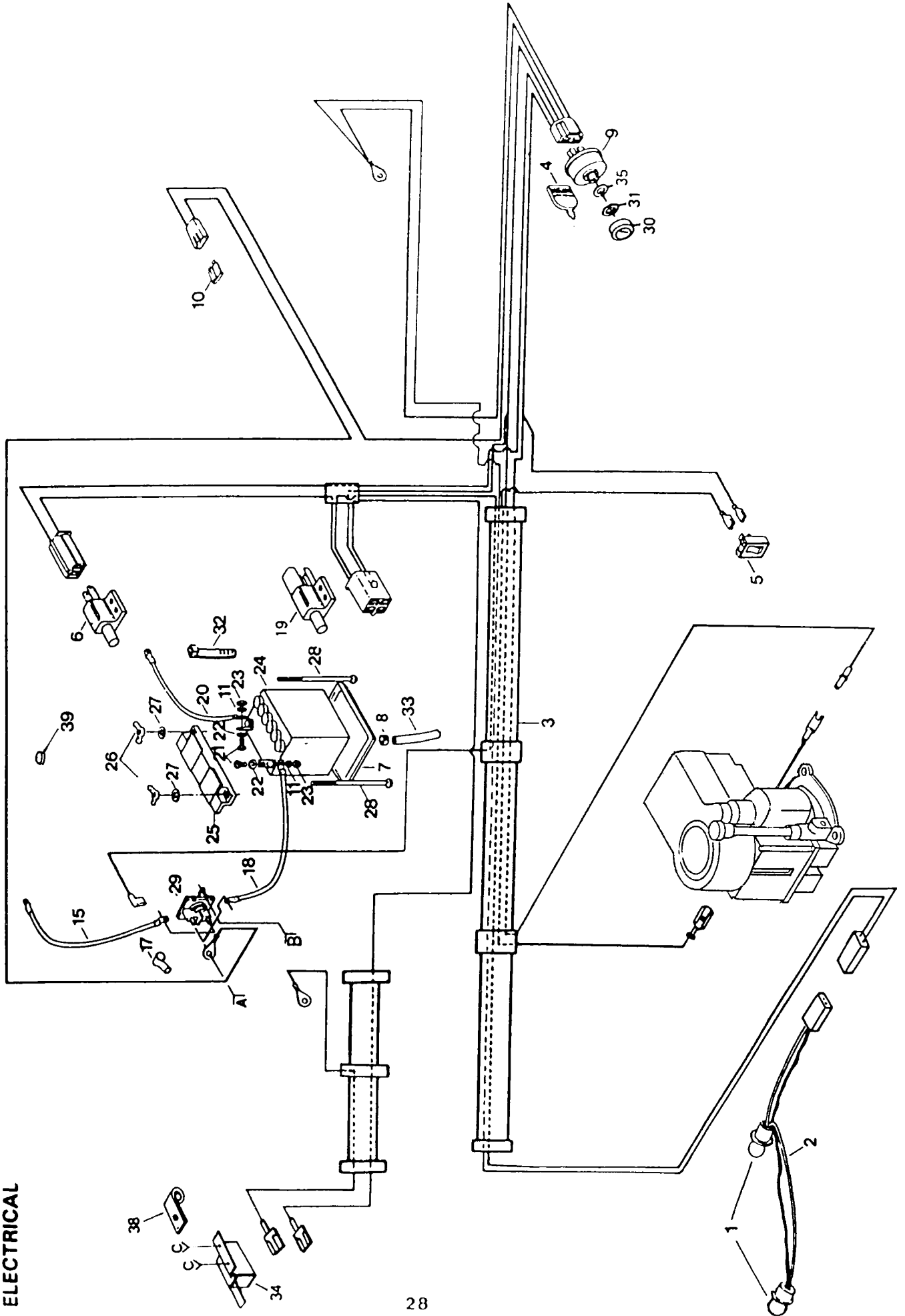
SCHEMATIC



REPAIR PARTS

12 H.P. 38" RIDING LAWN TRACTOR--MODEL NUMBER 917.254244

ELECTRICAL

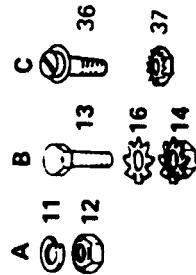


REPAIR PARTS

12 H.P. 38" RIDING LAWN TRACTOR--MODEL NUMBER 917.254244

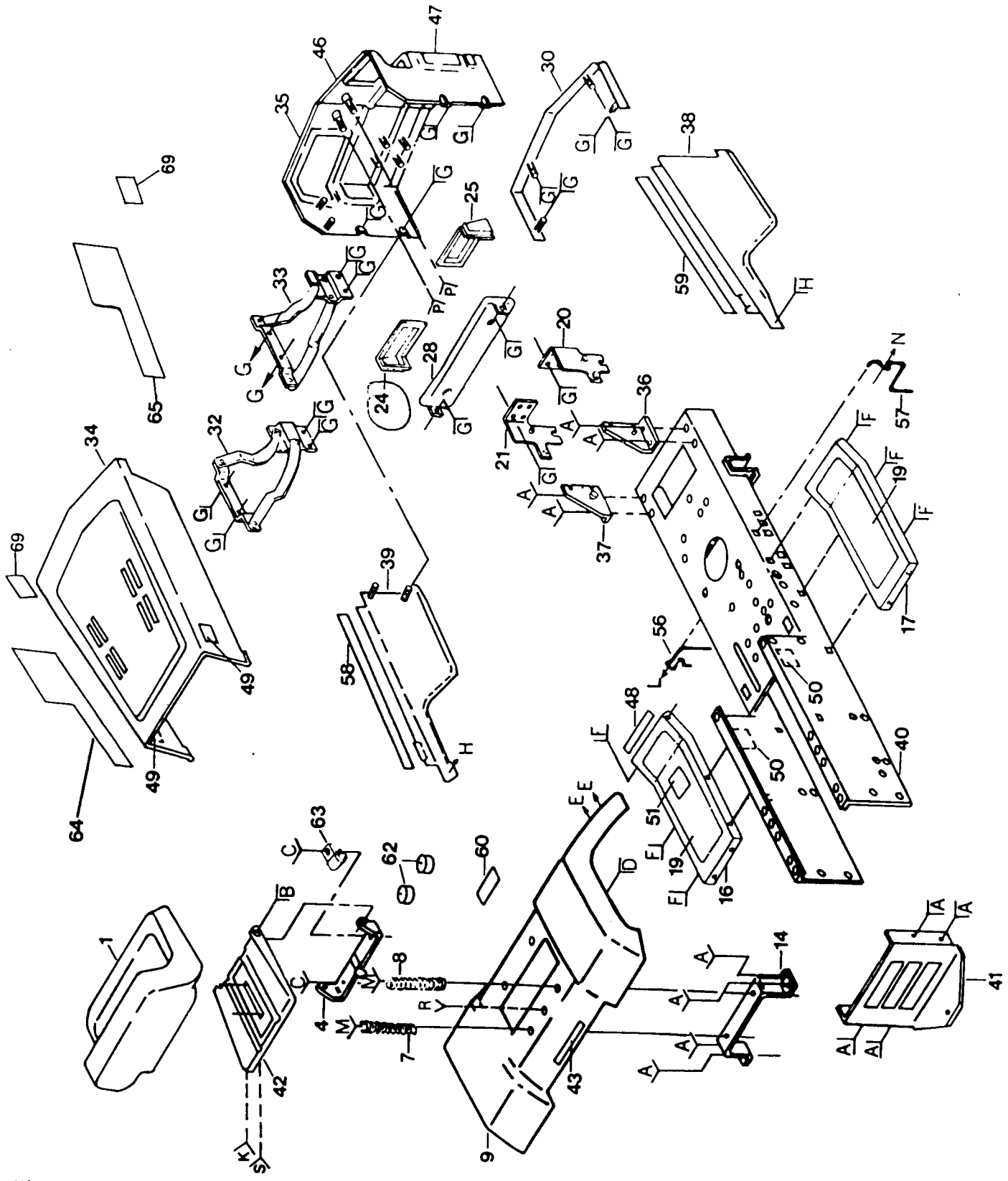
ELECTRICAL

KEY NO.	PART NO.	DESCRIPTION	KEY NO.	PART NO.	DESCRIPTION
1	7662J	Bulb, Light	17	719J	Cover, Terminal
2	110859X	Harness, Light Socket	18	5114J	Cable, Battery
3	120309X	Harness, Ignition	19	109553X	Switch-Interlock
4	109310X	Key, Molded	20	4207J	Cable, Battery
5	110712X	Switch, Light	21	STD522507	* Bolt, Hex, 1/4 - 20 x 3/4
6	104445X	Switch, Interlock	22	STD551025	* Washer 9/32 x 5/8 x 16 Ga.
7	7603J	Tray, Battery	23	STD541025	* Nut, Hex 1/4 - 20
8	109596X	Clamp, Hose	24	9272R	Battery, 12V., Sears (Includes electrolyte)
9	STD365402	Switch, Ignition	25	102476X	Terminal Guard
10	108824X	Fuse, 30 Amp.	26	STD541625	* Wing Nut 1/4-20
11	STD551125	* Washer, Lock, 1/4	27	11030400	In/Ext. Tooth Lockwasher 1/4
12	STD541225	* Nut, Hex Jam 1/4 - 20	28	72240460	Bolt - Rd. Hd. Sq. Nk. 1/4 - 20 x 7-1/2
13	STD522505	* Bolt, Hex, 1/4 - 20 x 1/2 Gr. 5	29	109081X	Solenoid
14	73510400	Nut, Keys 1/4 - 20	30	109787X	Bezel - Ignition
15	108423X	Cable Assembly	31	109788X	Nut, Ignition
16	11050400	Washer Lock, Ext. Tooth, 1/4	32	7192J	Cable Tie
			33	105687X	Tube, Plastic
			34	121064X	Switch - Seat
			35	19221616	Washer 11/16 x 1 x 16 Ga.
			36	74641008	Screw - Slotted Pan Hd. #10-32 x 1/2
			37	73951000	Nut - Keys #10-32 x 1/2
			38	4171R	Clip - Insulated
			39	120353X	Battery Caps Set
			---	101539X	Sheet - Instruction, Tractor 15° Slope
			---	120586X	Owners Manual



* STANDARD HARDWARD--PURCHASE LOCALLY

ENCLOSURE



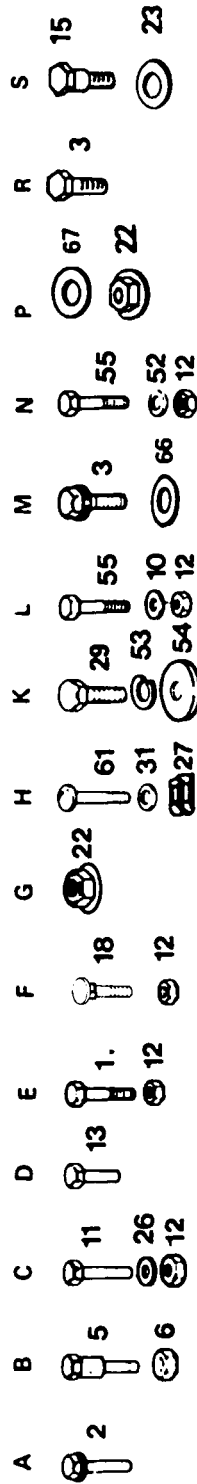
REPAIR PARTS

12 H.P. 38" RIDING LAWN TRACTOR--MODEL NUMBER 917.254244

ENCLOSURE

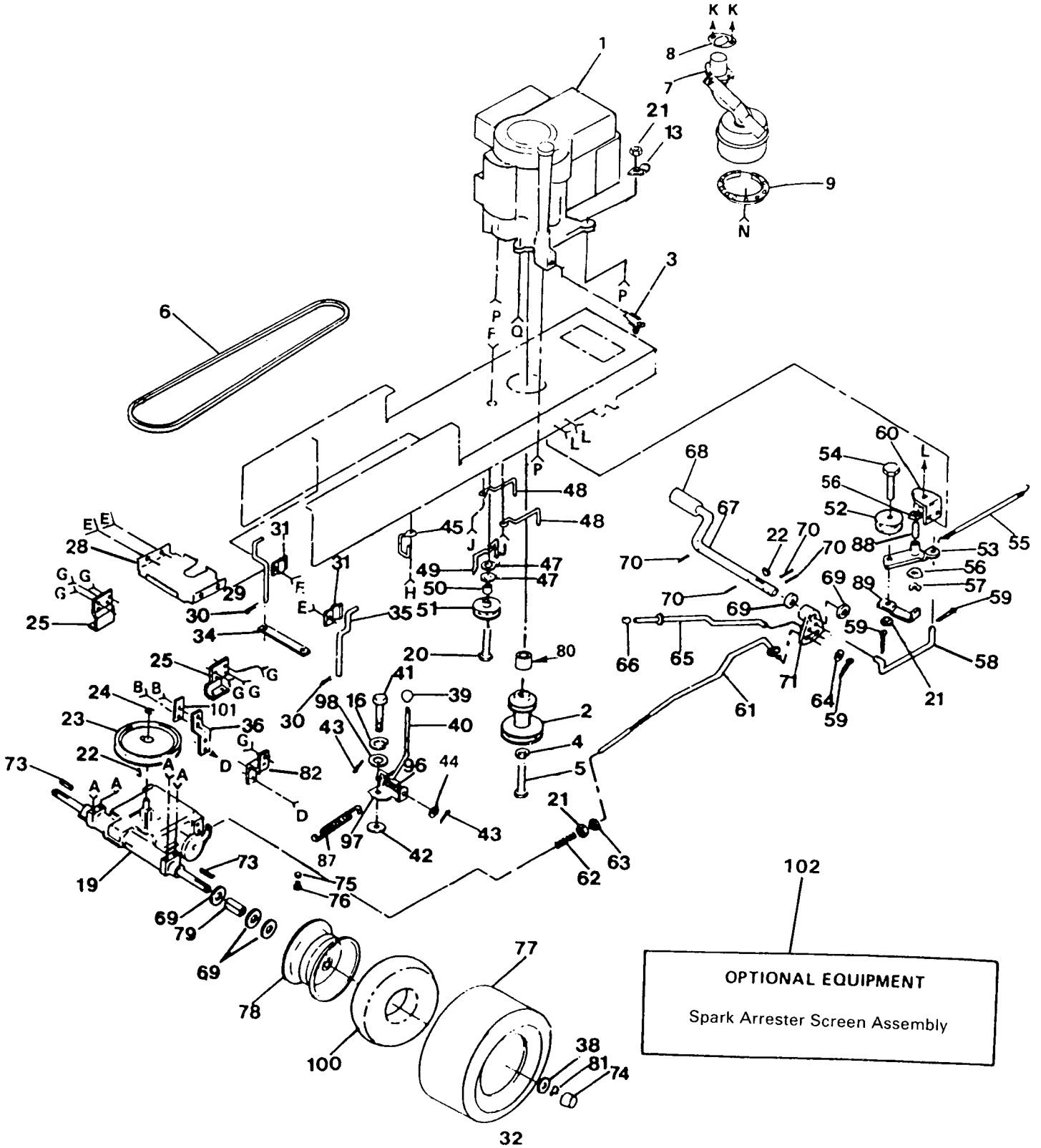
KEY NO.	PART NO.	DESCRIPTION	KEY NO.	PART NO.	DESCRIPTION
1	120039X	Seat	33	105792X	Hinge, Hood, R.H.
2	17490612	Screw, Hex Washer Thd. Roll 3/8-16 x 3/4 Type TT	34	105682X	Hood Assembly
3	17490616	Screw, Hex Washer Thd. Rolling 3/8-16 x 1	35	105678X	Grill Assembly
4	105513X	Bracket - Pivot, Seat	36	108500X	Bracket, Frame, Pivot, R.H.
5	105529X	Bolt, Shoulder, 5/16-18	37	108501X	Bracket, Frame, Pivot, L.H.
6	73680500	Nut, Lock, 5/16-18	38	106927X	Side Panel, R.H.
7	121068X	Spring - Compression L.H.	39	106929X	Side Panel, L.H.
8	121067X	Spring - Compression R.H.	40	109512X	Chassis Assembly
9	109872X	Fender	41	102481X	Drawbar
10	19131312	Washer 13/32 x 13/16 x 12 Ga.	42	121069X	Ran - Seat
11	STD523707	* Bolt, Hex, 3/8-16 x 3/4	43	105801X	Decal - Fender
12	73680600	Nut, Lock 3/8-16	46	105806X	Decal, Grill Craftsman
13	17490608	Screw, Hex Washer Thd. Roll 3/8-16 x 1/2	47	105807X	Decal, Grill, Stripe
14	109873X	Bracket, Fender	48	4900J	Decal, Clutch/Brake
15	121094X	Bolt - Shoulder 5/16-18	49	110010X	Decal, 12 H. P.
16	105465X	Footrest, L.H.	50	108428X	Decal, 6 Speed, 38"
17	105464X	Footrest, R.H.	51	109199X	Decal, V-Belt Schematic
18	STD533707	* Bolt, Carr. 3/8-16 x 3/4	52	19132012	Washer 13/32 x 1-1/4 x 12 Ga.
19	105466X	Pad, Footrest	53	STD551150	Lockwasher 1/2
20	108504X	Bracket, Pivot, Grill, R.H.	54	19171912	Washer 17/32 x 1-3/16 x 12 Ga.
21	108505X	Bracket, Pivot, Grill, L.H.	55	STD523710	* Bolt, Hex 3/8-16 x 1
22	108067X	Pal Nut 1/4-20	56	106301X	Guide - Belt, Lower, Eng. Pulley, L.H.
23	19151616	Washer 15/32 x 1 x 16 Ga.	57	106300X	Guide - Belt, Lower, Eng. Pulley, R.H.
24	108361X	Lens, L.H.	58	106811X	Decal - Stripe, Side Panel, L.H.
25	108360X	Lens, R.H.	59	106812X	Decal - Stripe, Side Panel, R.H.
26	19131210	Washer 13/32 x 3/4 x 10 Ga.	60	106974X	Decal - OPEI, Caution
27	106911X	Clip	61	106909X	Screw - Special
28	110897X	Bezel, Headlight	62	121093X	Cap - Spring
29	74780816	Bolt, Hex 1/2 - 13 x 1	63	2751R	Clip
30	109745X	Strap Assembly - Grill	64	105802X	Decal, Stripe, L.H.
31	106910X	Washer	65	105803X	Decal, Stripe, R.H.
32	105797X	Hinge, Hood, L.H.	66	19131614	Washer 13/32 x 1 x 14 Ga.
			67	19091216	Washer 9/32 x 3/4 x 16 Ga.
			69	108631X	Decal II

*STANDARD HARDWARE -- PURCHASE LOCALLY



REPAIR PARTS

DRIVE 12 H.P. 38" RIDING LAWN TRACTOR--MODEL NUMBER 917.254244



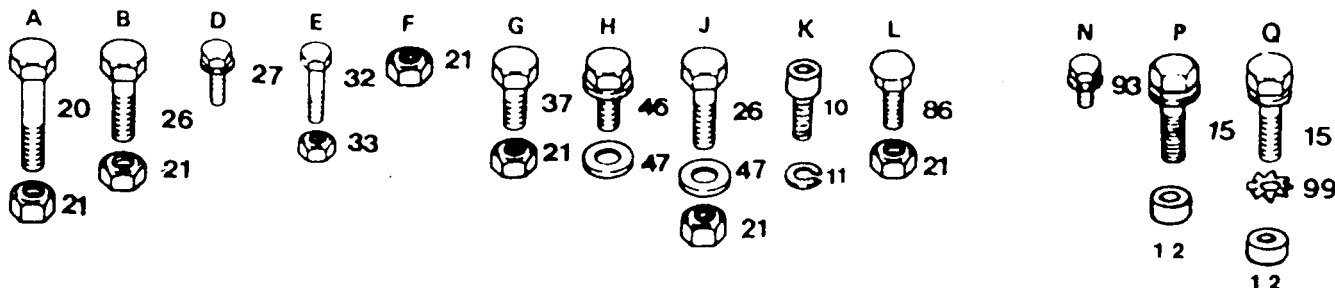
REPAIR PARTS

12 H.P. 38" RIDING LAWN TRACTOR--MODEL NUMBER 917.254244

DRIVE

KEY NO.	PART NO.	DESCRIPTION	KEY NO.	PART NO.	DESCRIPTION
1	120358X	Engine, 12 H.P. Tecumseh Model No. 143.386012	49	109070X	Retainer Belt
2	105731X	Pulley, Engine	50	4470J	Spacer
3	120374X	Valve, Drain Oil	51	4859J	Idler, Flat
4	STD551143	*Washer, Lock 7/16	52	106298X	Pulley, Idler
5	74770728	Bolt, Hex 7/16 - 20 x 1-3/4	53	105705X	Bellcrank Assembly (Inc. Key No. 88)
6	120302X	V-Belt, Drive	54	STD523715	*Bolt, Hex 3/8 - 16 x 1 - 1/2
7	108835X	Muffler	55	105709X	Spring, Return, Clutch
8	2949R	Gasket	56	110812X	Washer, Hardened
9	101326L	Deflector, Muffler	57	12000039	Ring, Klip
10	71070510	Hex Hd. Cap Screw 5/16-18 x 5/8	58	105710X	Link, Clutch
11	STD551131	Washer, Lock 5/16	59	76020412	Pin, Cotter 1/8 x 3/4
12	101200K	Spacer	60	105724X	Bracket, Clutch
13	2751R	Clip	61	109127X	Rod, Brake
15	17490628	Screw, Hex Washer Thd. Rolling 3/8-16x1-3/4	62	106888X	Spring, Rod, Brake
16	STD551125	*Washer, Lock 1/4	63	73350600	Nut - Jam 3/8 - 16
19	110195X	Transaxle Foote, 6 Speed, Model No. 4150-40 (see pages 40 and 41 for parts breakdown)	64	19131316	Washer 13/32 x 13/16 x 16 Ga.
20	STD523727	*Bolt, Hex 3/8 - 16 x 2 - 3/4	65	105758X	Rod, Brake, Parking
21	73680600	Nut, Lock 3/8 - 16	66	71673	Cap - Plunger
22	STD580025	*Key, Woodruff #9 3/16 x 3/4	67	109037X	Shaft, Foot Pedal
23	105703X	Pulley, Transaxle	68	8883R	Cover - Pedal
24	12000028	Ring, Retainer	69	19252016	Washer 25/32 x 1 - 1/4 x 16 Ga.
25	109167X	Bracket, Transaxle	70	STD571810	*Pin, Roll, 3/16 x 1
26	STD523710	*Bolt, Hex 3/8 - 16 x 1	71	106918X	Arm, Brake
27	17490512	Screw, Hex Washer Thread Rolling 5/16 - 18 x 3/4	73	STD580105	*Key, Square 3/16 x 2
28	108171X	Support, Battery	74	104757X	Cap, Hub, Rear
29	109368X	Keeper, Belt, L.H.	75	59192	Cap, Valve
30	4921H	Retainer, Spring	76	65139	Stem, Valve
31	106190X	Clamp	77	106268X	Tire, Rear - 18 x 9.50 x 8
32	STD523107	*Bolt, Hex 5/16 - 18 x 3/4	78	106108X	Rim Assembly, Rear
33	73680500	Nut, Lock 5/16 - 18	79	109502X	Spacer
34	109370X	Strap, Locator	80	6404J	Spacer, Engine Pulley
35	109369X	Keeper, Belt, R.H.	81	12000001	E-Ring
36	106157X	Strap, Torque, Transaxle	82	105842X	Strap, Torque, Transaxle
37	STD523707	*Bolt, Hex 3/8 - 16 x 3/4	86	STD533707	*Bolt, Carriage 3/8 - 16 x 3/4
38	19252616	Washer 25/32 x 1 - 5/8 x 16 Ga.	87	110422X	Spring - Brake
39	106933X	Knob, Shift	88	105706X	Bearing
40	110458X	Rod, Shift	89	106499X	Retainer - Belt
41	71040412	Bolt - Hex 1/4-28 x 3/4	93	17450808	Screw - Spider Lock #8 x 1/2 1/2 AB
42	105701X	Washer - Shift, Plate	96	105700X	Spring
43	STD561210	*Cotter Pin, 1/8 x 1	97	106919X	Plate, Shift
44	19151216	Washer 15/32 x 3/4 x 16 Ga.	98	19091210	Washer 9/32 x 3/4x 10 Ga.
45	104777X	Retainer, Belt	99	11050600	Washer, Lock, Ext. Tooth 3/8
46	17490612	Screw, Hex Washer Thd. Rolling 3/8 - 16 x 3/4	100	7152J	Tube, Tire (not furnished with tractor)
47	19131312	Washer 13/32 x 13/16 x 12 Ga.	101	106157X	Plate - Torque Strap
48	105730X	Keeper, Belt, Engine	102	677V1	Spark Arrester Screen Assembly

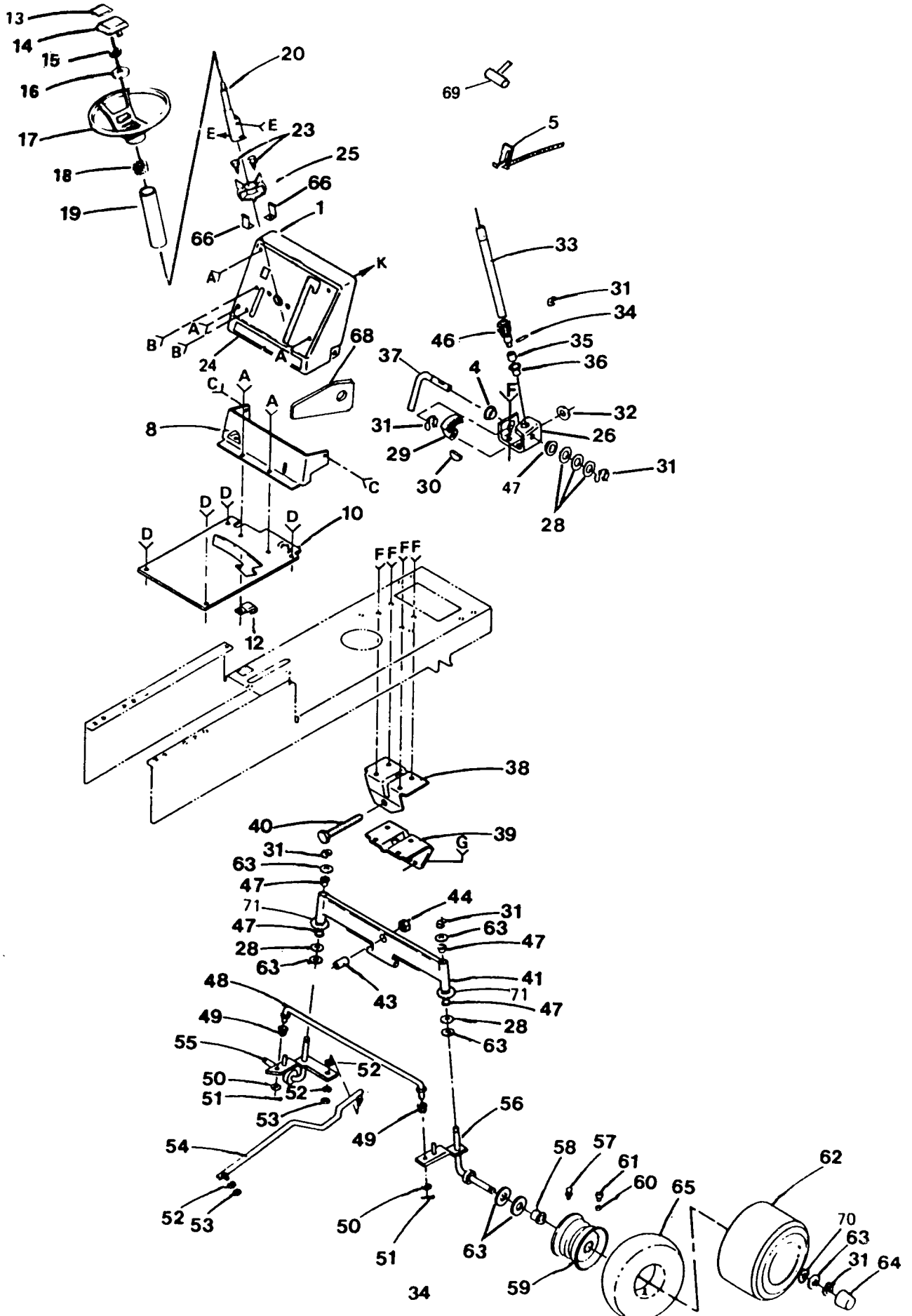
*STANDARD HARDWARE--PURCHASE LOCALLY



REPAIR PARTS

12 H.P. 38" RIDING LAWN TRACTOR--MODEL NUMBER 917.254244

STEERING AND FRONT AXLE



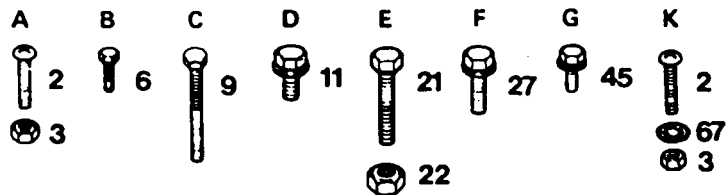
REPAIR PARTS

12 H.P. 38" RIDING LAWN TRACTOR--MODEL NUMBER 917.254244

STEERING AND FRONT AXLE

KEY NO.	PART NO.	DESCRIPTION	KEY NO.	PART NO.	DESCRIPTION
1	109283X012	Dash	34	2882J	Pin - Drive 3/16 x 1
2	74180512	Screw - Truss Hd. Cross Recess 5/16 - 18 x 3/4	35	74580	Spacer .627 x .88 x .695
3	73510500	Nut - Keps 5/16 - 18	36	71208	Bushing
4	109816X	Nyliner, Snap In	37	108683X	Rod - Steering
5	120139X	Control - Throttle	38	105663X	Support - Saddle, Rear
6	17720408	Screw - Hex Thread Cut. 1/4 - 20 x 1/2	39	105664X	Support - Saddle, Front
8	105621X	Dash - Lower	40	74761060	Bolt - Hex 5/8 - 11 x 3 - 3/4
9	17190508	Screw - Hex Washer Hd. Thread Cut. 5/16 - 18 x 1/2	41	105669X	Axle - Front
10	110657X012	Saddle	43	110438X	Spacer, Bearing, Front Axle
11	17490608	Screw - Hex Washer Hd. Thread Rolling 3/8 - 16 x 1/2	44	73901000	Nut - Lock, Flange 5/8 - 11
12	2751R	Clip - Insulated	45	17490508	Screw - Hex Washer Thread Rolling 5/16 - 18 x 1/2 Type TT
13	105810X	Decal - Cap, Steering Wheel	46	108685X	Gear, Pinion
14	100710L	Insert - Steering Wheel	47	3366R	Bearing
15	73940800	Nut - Hex Jam Lock 1/2 - 20	48	105715X	Rod - Tie
16	100712K	Washer	49	120382X	Bushing
17	100713N	Wheel - Steering	50	19131416	Washer 13/32 x 7/8 x 16 Ga.
18	100711L	Adapter - Steering Wheel	51	76020412	Pin - Cotter 1/8 x 3/4
19	109285X	Sleeve - Steering	52	STD551137	*Washer - Lock 3/8
20	105643X	Shaft - Steering Upper	53	STD541137	*Nut - Hex 3/8 - 24
21	STD523712	*Bolt - Hex 3/8 - 16 x 1 - 1/4	54	105727X	Link - Drag
22	73680600	Nut - Lock 3/8 - 16	55	105656X	Spindle - L.H.
23	98000165	Screw - Hex Self Tap. No. 10 - 16 x 1/2	56	105654X	Spindle - R.H.
24	108456X	Decal - Instruction, Operating	57	278H	Fitting - Grease
25	109284X	Bushing - Steering	58	9040H	Bearing - Flange
26	109432X	Bracket - Steering	59	106732X	Rim - 6" - Front
27	17490612	Screw - Hex Washer Thread Rolling 3/8 - 16 x 3/4 Type TT	60	59192	Cap - Valve
28	6266H	Bearing - Thrust	61	65139	Stem - Valve
29	108684X	Gear - Sector	62	106222X	Tire - Turf
30	106126X	Key - Woodruff	63	19252016	Washer 25/32 x 1-1/4 x 16 Ga.
31	12000029	Klip Ring	64	104757X	Cap - Hub, Front
32	101930X	Washer, Hardened	65	59904	Tube - Front (Not furnished with tractor)
33	109068X	Shaft - Steering, Lower	66	110130X	Retainer, Steering
			67	11150500	Washer, Lock, Int. Tooth 5/16
			68	110307X	Stop - Mower, Clutch Lever
			69	61159	Knob - Throttle Control
			70	19252616	Washer 25/32 x 1-5/8 x 16 Ga.
			71	19272016	Washer 27/32 x 1-1/4 x 16 Ga.

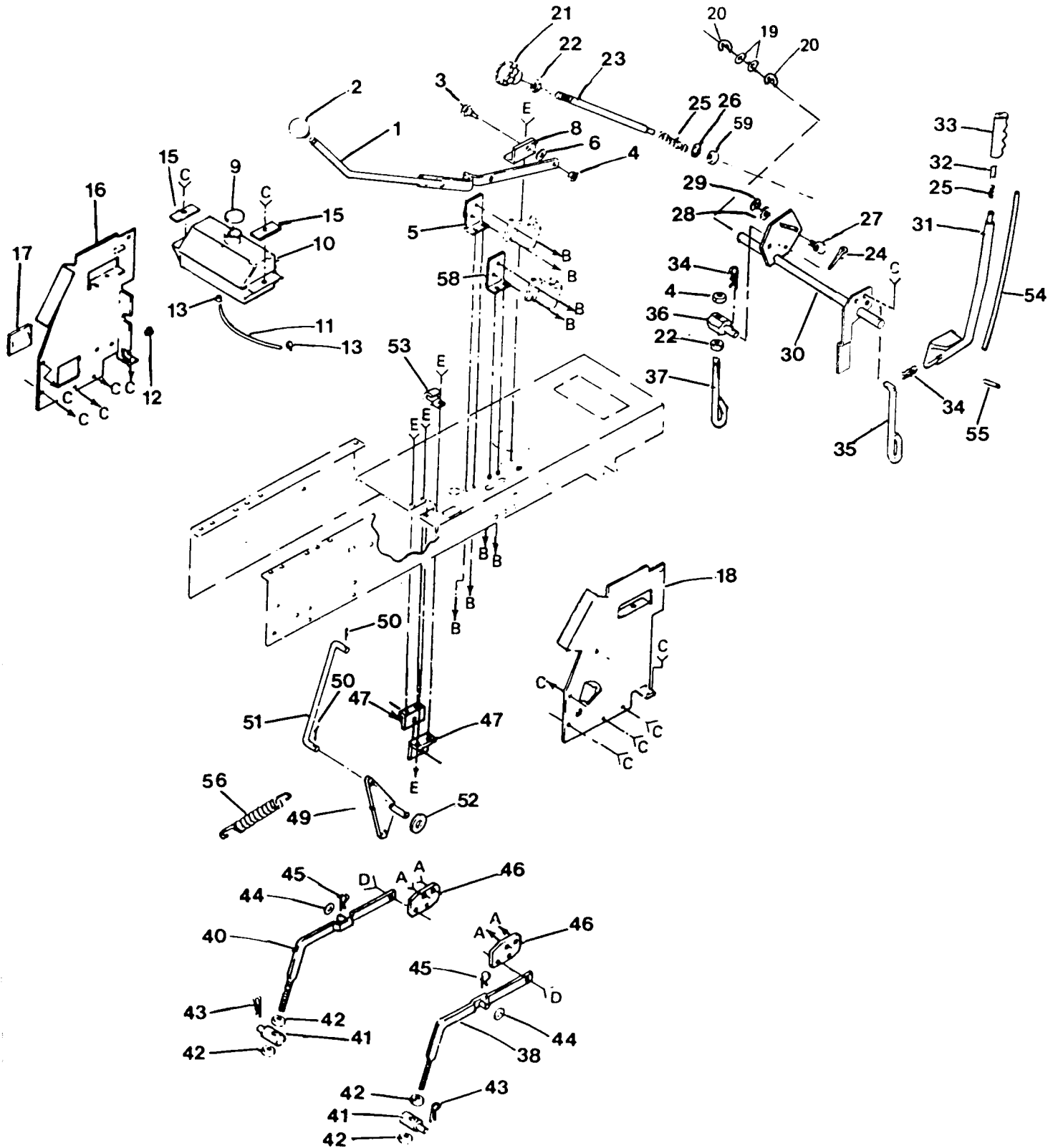
*STANDARD HARDWARE--PURCHASE LOCALLY



REPAIR PARTS

12 H.P. 38" RIDING LAWN TRACTOR--MODEL NUMBER 917.254244

LIFT ADJUSTMENT



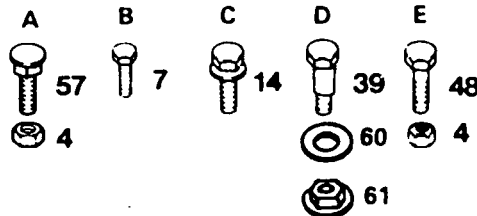
REPAIR PARTS

12 H.P. 38" RIDING LAWN TRACTOR--MODEL NUMBER 917.254244

LIFT ADJUSTMENT

KEY NO.	PART NO.	DESCRIPTION	KEY NO.	PART NO.	DESCRIPTION
1	106448X	Lever, Clutch, Mower	31	105768X	Lever, Assembly
2	106932X	Knob	32	105723X	Plunger
3	106451X	Bolt, Shoulder	33	109413X	Grip, Handle
4	73680600	Nut, Lock, 3/8 - 16	34	4939M	Retainer, Spring
5	106452X	Bracket, Switch, Interlock	35	110029X	Link, Lift
6	19171713	Washer 17/32 x 1 - 1/16 x 13 Ga.	36	106204X	Trunnion, Lift
7	17021008	Screw, Hex, Tapping, No. 10 - 24 x 1/2	37	105855X	Link, Lift, Adjustable
8	106447X	Support, Lever, Clutch	38	105862X	Arm, Suspension, R.H.
9	109462X	Cap, Fuel	39	105848X	Bolt, Shoulder, 3/8 - 16
10	109202X	Tank, Fuel	40	105863X	Arm, Suspension, L.H.
11	101335K	Line, Fuel	41	106308X	Trunnion, Lift, Lower
12	9151R	Grommet	42	STD541250	*Nut - Hex 1/2 - 13
13	6999R	Clamp - Hose	43	9135R	Retainer, Spring
14	17490612	Screw, Hex Washer Thd. Rolling 3/8 - 16 x 3/4	44	19171516	Washer 17/32 x 15/16 x 16 Ga.
15	106901X	Clamp - Tank, Fuel	45	4921H	Retainer, Spring
16	106920X	Panel, Dash, L.H.	46	105864X	Bracket, Suspension
17	105505X	Cover, Access	47	106444X	Bracket, Bellcrank
18	106921X	Panel, Dash, R.H.	48	STD523707	*Bolt, Hex 3/8 - 16 x 3/4
19	19292016	Washer 29/32 x 1 - 1/4 x 16 Ga.	49	109728X	Bellcrank Assembly
20	12000022	E Ring	50	76020412	Pin, Cotter, 1/8 x 3/4
21	100734K	Knob	51	106446X	Rod, Clutch, Primary
22	STD541237	*Nut, Hex Jam 3/8 - 16	52	19131410	Washer 13/32 x 7/8 x 10 Ga.
23	110809X	Rod, Adjust, Lift	53	5320R	Clip - Insulated
24	76020308	Pin, Cotter 3/32 x 1/2	54	105764X	Rod Assembly - Lever, Lift (Includes Key 32)
25	2876H	Spring	55	105767X	Pin - Groove
26	19131016	Washer 13/32 x 5/8 x 16 Ga.	56	106810X	Spring - Extension
27	110810X	Trunnion - Depth Stop	57	72140606	Screw 3/8-16 x 3/4
28	19151216	Washer 15/32 x 3/4 x 16 Ga.	58	108236X	Bracket - Switch
29	12000037	Klip Ring	59	110807X	Nut - Special
30	120420X	Shaft, Lift	60	110739X	Washer - Spring
			61	73980600	Nut - Flangelock 3/8 - 16

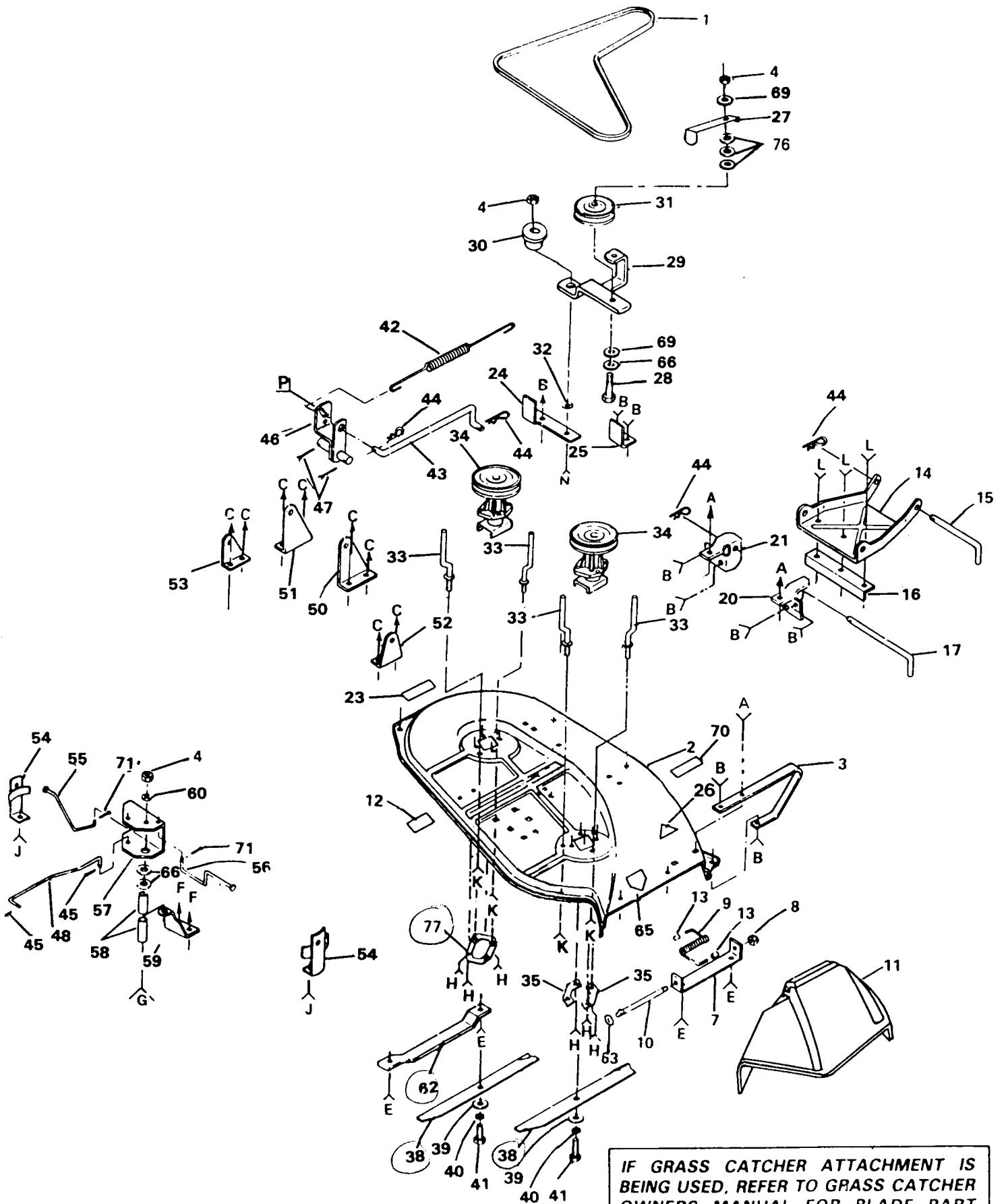
*STANDARD HARDWARE--PURCHASE LOCALLY



REPAIR PARTS

12 H.P. 38" RIDING LAWN TRACTOR--MODEL NUMBER 917.254244

38" MOWER



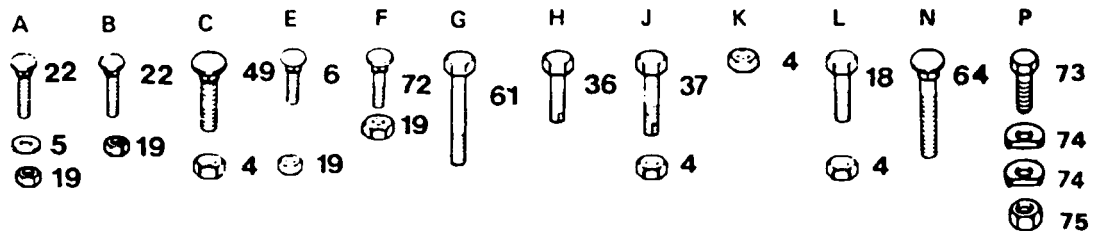
REPAIR PARTS

12 H.P. 38" RIDING LAWN TRACTOR--MODEL NUMBER 917.254244

38" MOWER

KEY NO.	PART NO.	DESCRIPTION	KEY NO.	PART NO.	DESCRIPTION
1	106085X	V-Belt	38	106634X	**Blade
2	105689X	Housing	39	19132012	Washer 13/32 x 1 - 1/4 x 12 Ga.
3	8417J	Runner, R.H.	40	STD551137	*Washer, Lock 3/8
4	73680600	Nut, Lock, 3/8 - 16	41	STD623715	*Bolt, Hex, 3/8 - 24 x 1 - 1/2 Gr. 5
5	19111216	Washer 11/32 x 3/4 x 16 Ga.	42	108250X	Spring, Extension
6	72140505	Bolt, Carr., 5/16 - 18 x 5/8	43	108235X	Rod - Clutch, Mower
7	105896X	Bracket, Deflector	44	4921H	Spring - Retainer
8	110452X	Pushnut	45	STD560907	*Pin, Cotter 3/32 x 3/4
9	106734X	Spring, Deflector	46	109892X	Rock Shaft Assembly
10	106735X	Rod - Hinge	47	76020616	Pin, Cotter, 3/16 x 1
11	106736X	Deflector - Shield	48	108247X	Rod, Brake, Primary
12	105814X	Decal	49	72140606	*Bolt, Carr. 3/8 - 16 x 3/4
13	105304X	Cap	50	108243X	Bracket, Pivot, R.H.
14	105662X	Link, Parallel	51	108241X	Bracket, Pivot, L.H.
15	105744X	Pin - Hinge, Front	52	105857X	Bracket, Suspension, Rear, R.H.
16	105872X	Stop, Link	53	108673X	Bracket, Suspension, Rear, L.H.
17	105743X	Pin - Hinge, Rear	54	106578X	Brake Assembly
18	STD523707	*Bolt 3/8 - 16 x 3/4	55	106463X	Rod, Brake, Secondary L.H.
19	73680500	Nut, Lock 5/16 - 18	56	108249X	Rod, Brake, Secondary, R.H.
20	109598X	Bracket, Lift, R.H.	57	106456X	Bracket, Brake, Pivot
21	109597X	Bracket, Lift, L.H.	58	100672K	Spacer, Brake
22	STD533107	*Bolt, Carr. 5/16 - 18 x 3/4	59	100673L	Bracket, Support
23	3713J	Instruction - Caution Decal	60	19131614	Washer 13/32 x 1 x 14 Ga.
24	109503X	Support, Arm	61	74760684	Bolt, 3/8 - 16 x 5 - 1/4
25	109504X	Stop, Deck, Front	62	7631J	Runner, L.H.
26	109984X	Decal - Safety Standard	63	19111016	Washer 11/32 x 5/8 x 16 Ga.
27	106461X	Guide Belt	64	72140610	Bolt, Carr. 3/8 - 16 x 1 - 1/4
28	STD523722	Bolt Hex 3/8 - 16 x 2-1/4	65	78850	Decal - Warning
29	108832X	Arm, Idler	66	STD551037	*Washer 13/32 x 13/16 x 16 Ga.
30	106902X	Spacer - Retainer	69	19132012	Washer 13/32 x 1-1/4 x 12 Ga.
31	102403X	Pulley - Idler	70	106679X	Decal - Warning
32	106513X	Washer, Wear, 1/16	71	76020308	Pin, Cotter, 3/32 x 1/2
33	102669X	Keeper, Belt	72	72110506	Bolt, Carriage 5/16-18 x 3/4
34	105891X	Mandrel Assembly	73	STD522507	*Bolt Hex 1/4-20 x 3/4
35	100668L	Plate, Support, Mandrel	74	109893X	Washer, Special
36	17490612	Screw, Hex Washer Hd. 3/8 - 16 x 3/4	75	73680400	Nut, Lock 1/4-20
37	17490620	Screw, Hex Washer Hd. 3/8 - 16 x 1 - 1/4	76	19131407	Washer 13/32 x 7/8 x 7 Ga.
			77	110445X	L.H. Mandrel Support

*STANDARD HARDWARE--PURCHASE LOCALLY



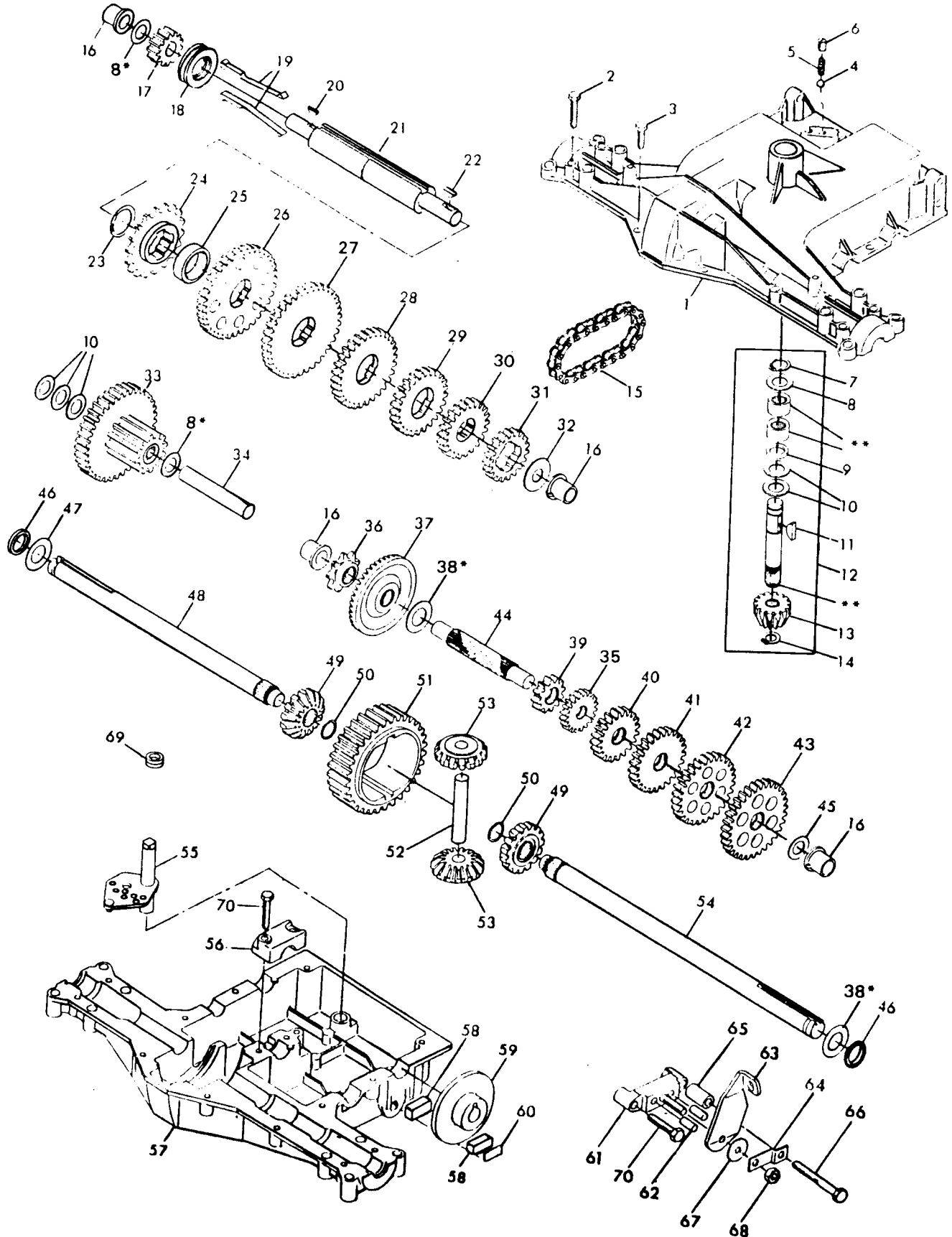
3

** IF GRASS CATCHER ATTACHMENT IS BEING USED, REFER TO GRASS CATCHER OWNERS MANUAL FOR BLADE PART NUMBER.

REPAIR PARTS

12 H.P. 38" RIDING LAWN TRACTOR - MODEL NUMBER 917.254244
TRANSAXLE FOOTE - MODEL NUMBER 4150-40

TRANSAXLE



REPAIR PARTS

12 H.P. 38" RIDING LAWN TRACTOR - MODEL NUMBER 917.254244 TRANSAXLE FOOTE - MODEL NUMBER 4150-40

TRANSAXLE

KEY NO.	PART NO.	DESCRIPTION	KEY NO.	PART NO.	DESCRIPTION
1	105903X	Housing, Upper	38	106097X	Washer, Plain, .758 x 1.25 x .025
2	2276J	Screw, Tapping, 1/4-20 x 1.31 Lg.	38	2264J	Washer, Plain, .758 x 1.25 x .031
3	2274J	Screw, Tapping, 1/4-20 x .875 Lg.	38	106098X	Washer, Plain, .758 x 1.25 x .035
4	68003	Ball, Detent	38	2265J	Washer, Plain, .758 x 1.25 x .040
5	105904X	Spring, Detent	38	106586X	Washer, Plain, .758 x 1.25 x .045
6	105905X	Screw, Set	38	106587X	Washer, Plain, .758 x 1.25 x .050
7	2267J	Ring, Retaining	38	106588X	Washer, Plain, .758 x 1.25 x .055
8	2233J	Washer, Plain, .632 x 1.00 x .020	38	2263J	Washer, Plain, .758 x 1.25 x .062
8	2232J	Washer, Plain, .632 x 1.00 x .026	39	105933X	Gear, Spur, 12T.
8	2231J	Washer, Plain, .632 x 1.00 x .031	40	105934X	Gear, Spur, 20T.
8	2230J	Washer, Plain, .632 x 1.00 x .036	41	106589X	Gear, Spur, 25T.
8	2229J	Washer, Plain, .632 x 1.00 x .041	42	106130X	Gear, Spur, 28T.
8	2228J	Washer, Plain, .632 x 1.00 x .046	43	105937X	Gear, Spur, 31T.
8	2227J	Washer, Plain, .632 x 1.00 x .050	44	110469X	Shaft, Drive
8	2226J	Washer, Plain, .632 x 1.00 x .060	45	2226J	Washer, Plain, .640 x 1.00 x .060
8	105906X	Washer, Plain, .632 x 1.00 x .082	46	2272J	Seal, Felt
9	6725J	O-Ring	47	2264J	Washer, Plain, .758 x 1.25 x .031
10	2228J	Washer, Plain, .632 x 1.00 x .046	48	110080X	Axle, L.H.
11	2257J	Key, Woodruff, #9	49	110081X	Gear, Miter, 15T.
12	3331J	Ass'y., Kit, Input Shaft	50	105941X	Ring, Retaining, Spirolox®
13	2287J	Pinion, Bevel, 16T.	51	110071X	Gear, Spur, 32T.
14	2286J	Ring, Retaining	52	110072X	Shaft, Cross
15	105910X	Chain, 24 Pitches	53	110082X	Gear, Miter, 15T.
16	105911X	Bearing, Flange	54	110083X	Axle, R.H.
17	110463X	Gear, Spur, 13T.	55	110475X	Ass'y., Shifter
18	105913X	Collar, Clutch	56	108987X	Cap, Support
19	110464X	Key, Clutch	57	110476X	Housing, Lower
20	110465X	Key, Woodruff, #3, Special	58	108988X	Puck, Friction
21	110466X	Shaft, Intermediate	59	64260	Disc, Brake
22	2244J	Key, Woodruff #61	60	108989X	Spacer
23	105916X	Ring, Retaining	61	110477X	Ass'y., Jaw, Brake
24	110467X	Sprocket, 18T.	62	108991X	Pin, Dowel
25	110070X	Spacer	63	108992X	Lever, Actuating
26	108977X	Gear, Spur, 37T.	64	110074X	Bracket, Anti-Rotation
27	109001X	Gear, Spur, 35T.	65	108994X	Spacer, .323 x .563 x 1.00 Lg.
28	108979X	Gear, Spur, 30T.	66	108995X	Screw, Tapping, 5/16-18 x 2.50 Lg.
29	108980X	Gear, Spur, 25T.	67	108996X	Washer, Plain, .321 x 1.00 x .055
30	108998X	Gear, Spur, 22T.	68	.73810500	Nut, Lock, 5/16-24
31	108455X	Gear, Spur, 19T.	69	108727X	V-Ring
32	105925X	Washer, Plain, .640 x 1.37 x .061	70	106596X	Screw, Tapping, 5/16-18 x 1.44 Lg.
33	110468X	Ass'y., Gear, Comb., 12T. & 37T.			
34	105927X	Shaft, Idler			
35	106151X	Gear, Spur, 15T.			
36	105928X	Sprocket, 9T.			
37	110478X	Gear, Bevel, 42T.			
38	108983X	Washer, Plain, .758 x 1.12 x .010			
38	105930X	Washer, Plain, .758 x 1.12 x .015			
38	105931X	Washer, Plain, .758 x 1.12 x .020			
38	105932X	Washer, Plain, .758 x 1.12 x .025			
38	3417J	Washer, Plain, .758 x 1.25 x .020			

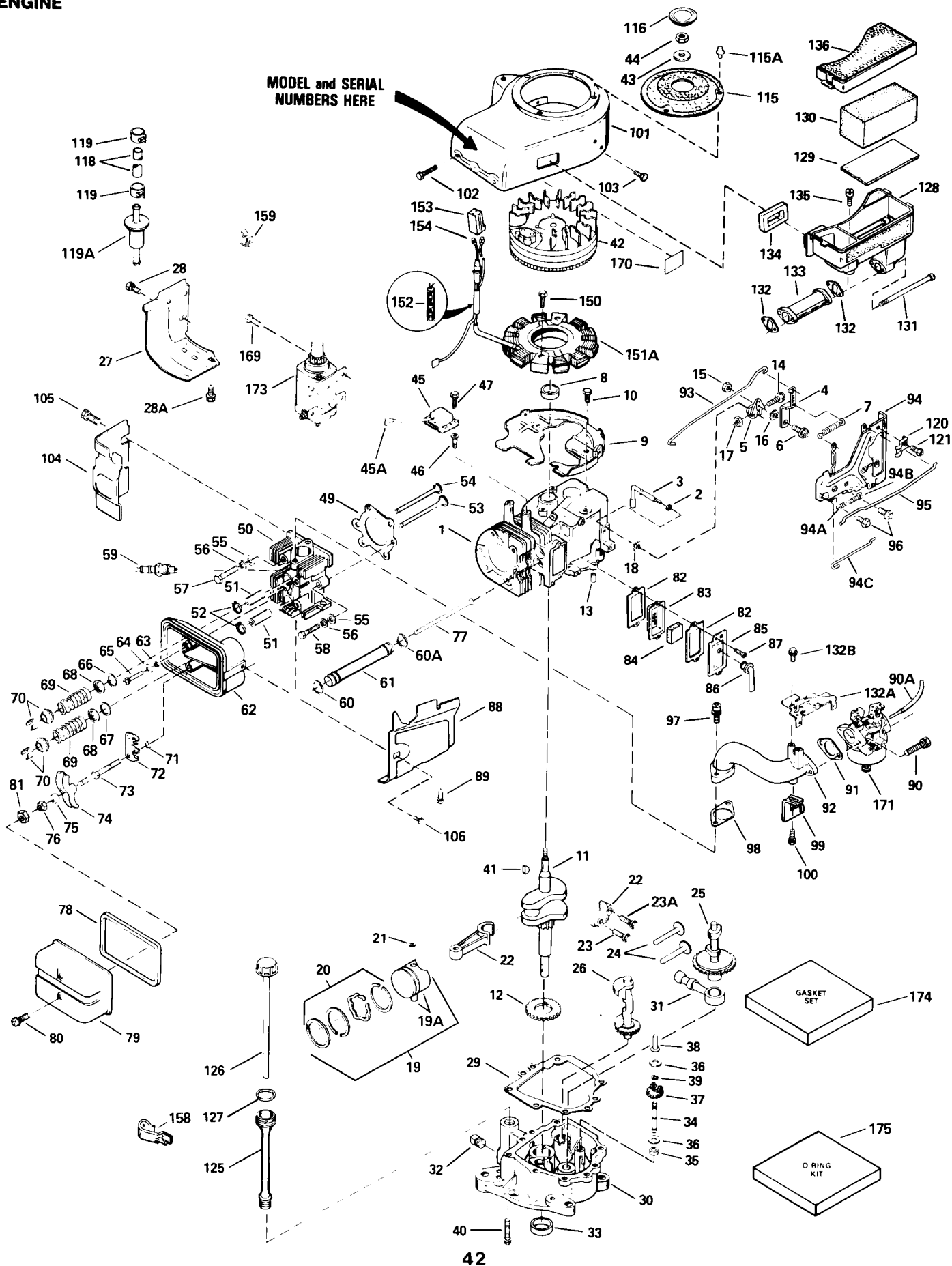
* Use in various combinations to maintain proper clearances.

** Not sold separately - Order Key No. 12.

REPAIR PARTS

12 H.P. 38" RIDING LAWN TRACTOR - MODEL NUMBER 917.254244
ENGINE TECUMSEH - MODEL NUMBER 143.386012

ENGINE



REPAIR PARTS

12 H.P. 38" RIDING LAWN TRACTOR - MODEL NUMBER 917.254244

ENGINE TECUMSEH - MODEL NUMBER 143.386012

ENGINE

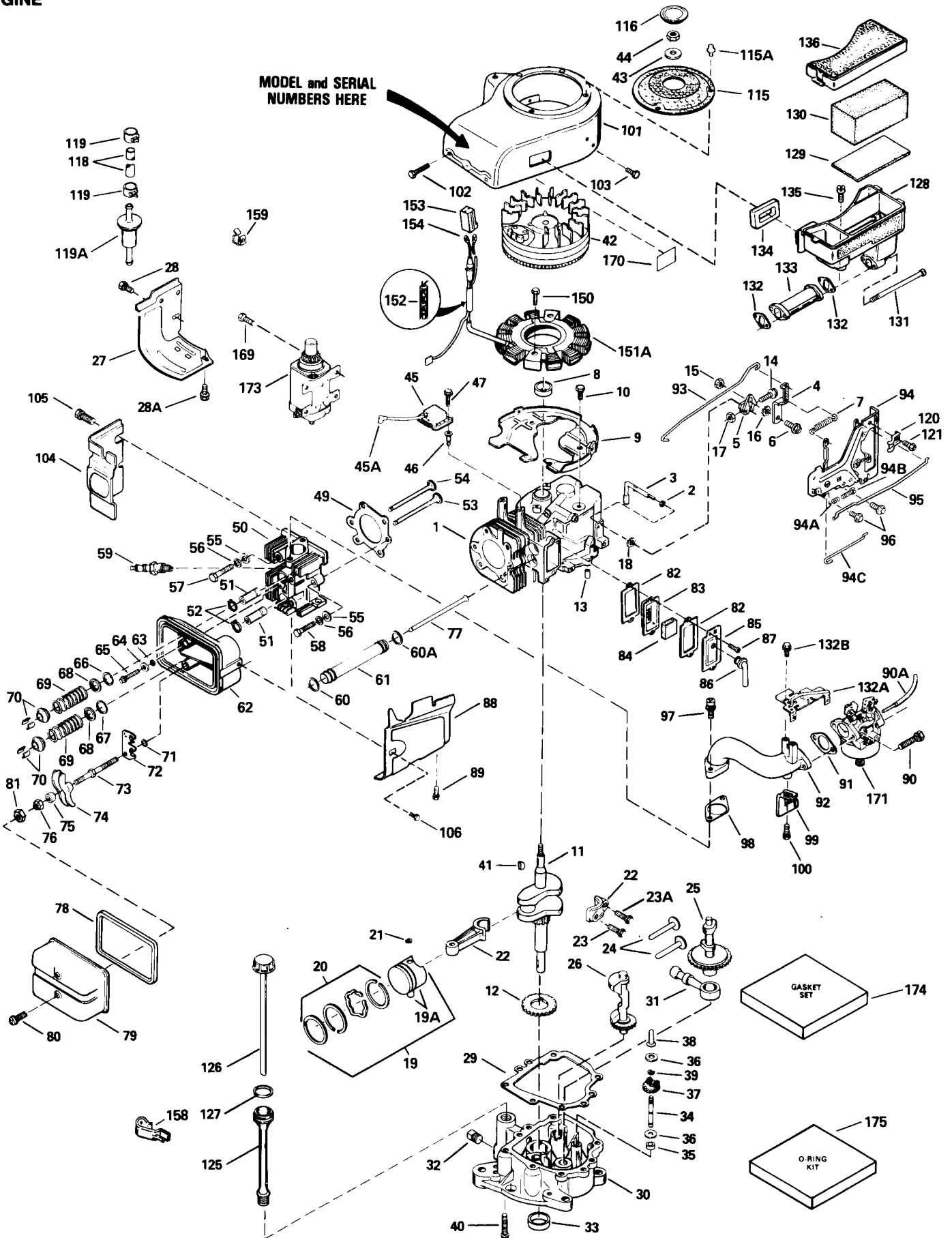
Ref. No.	Part No.	Part Name	Ref. No.	Part No.	Part Name
1	35323A	Cylinder Assy. (Incl. Nos. 8 & 13)	53	35308	Valve, Exhaust (Std.)
2	28277	Washer, Flat	53	35433	Valve, Exhaust (1/32" oversize)
3	35324	Rod, Governor	54	35309	Valve, Intake (Std.)
4	35520	Lever, Governor	54	35432	Valve, Intake (1/32" oversize)
5	29916	Clamp, Governor lever	55	650691	Washer, Flat
6	650548	Screw, Hex washer hd., 8-32 x 5/16	56	650690	Washer, Belleville
7	35521	Spring, Control	57	650746	Screw, Hex hd., 5/16-18 x 1-3/8
8	35319	Seal, Oil	58	650692	Screw, Hex hd., 5/16-18 x 1-3/4
9	35326	Baffle, Blower housing	59	34046	Resistor Spark Plug (Champion RL-86C or equivalent)
10	650561	Screw, Hex washer hd. Durlok, 1/4-20 x 5/8	60	†*33481	"O" Ring
11	35336A	Crankshaft Assy.	60A	†*33481	"O" Ring
12	35327	Gear, Counterbalance	61	35475	Tube, Push rod
13	27652	Pin, Dowel	62	35310	Housing, Rocker arm
14	29826	Screw, Hex washer hd., 10-32 x 3/4	63	†*33484	"O" Ring
15	30322	Locknut, Hex "Keps", 8-32	64	650168	Washer, Flat
16	29918	Washer, E.T. Lock #8	65	32610A	Screw, Flanged hex hd., 1/4-20 x 29/32
17	29216	Locknut, Hex "Keps", 10-32	66	†*33509	"O" Ring (Intake)
18	29642	Ring, Retaining	67	†*34410	"O" Ring (Exhaust)
19	35339	Piston, Pin & Ring Assy. (Std.) (Incl. Nos. 19A, 20 & 21)	68	33510	Cap, Valve spring
19	35340	Piston, Pin & Ring Assy. (.010 oversize) (Incl. Nos. 19A, 20 & 21)	69	33507	Spring, Valve
19	35341	Piston, Pin & Ring Assy. (.020 oversize) (Incl. Nos. 19A, 20 & 21)	70	33508	Keeper valve retainer & cap set
19A	35329	Piston & Pin Assy. (Std.) (Incl. No. 21)	71	†*35295	"O" Ring
19A	35430	Piston & Pin Assy. (.010 oversize) (Incl. No. 21)	72	35296	Guide, Push rod
19A	35431	Piston & Pin Assy. (.020 oversize) (Incl. No. 21)	73	650878	Stud, Rocker arm
20	34866	Ring Set, Piston (Std.)	74	35297	Arm, Rocker
20	34867	Ring Set, Piston (.010 oversize)	75	35298	Bearing, Rocker arm
20	34868	Ring Set, Piston (.020 oversize)	76	†*28264	Nut Assy. (Incl. No. 81)
21	31919	Ring, Piston pin retaining	77	35466	Rod, Push
22	35330A	Rod Assy., Connecting (Incl. No. 23 & 23A)	78	†*35299A	"O" Ring
23	650908	Screw, Connecting rod	79	35300	Cover, Rocker arm housing
23A	650882	Screw, Connecting rod	80	†*650879	Screw, Truss hd. w/sealing
24	35313	Lifter, Valve	81	†*650903	Lockwasher, 8-32 x 1/2
25	35314A	Camshaft Assy. (Mech. Compression Release) (Incl. No. 24)	82	*27896	Nut, Hex jam
26	35315	Weight Assy., Counterbalance	83	28423	Gasket, Valve cover
27	35316	Extension, Blower housing	84	28424	Body, Breather
28	650128	Screw, Fil. hd. Sems, 10-24 x 1/2	85	28425	Element, Breather
28A	30063	Screw, Hex hd. Sems, 1/4-20 x 1/2	86	35350	Cover, Valve spring box
29	*35317	Gasket, Mounting flange	87	650128	Tube, Breather
30	35318	Flange, Mounting (Incl. Nos. 28A, 32, 33 & 34)	88	35301	Screw, Fil. hd. Sems, 10-24 x 1/2
31	31356	Pump Assy., Oil	89	650128	Screw, Fil. hd. Sems, 10-24 x 1/2
32	31927	Plug, Oil drain (square hd., 3/18-18)	90	650517	Screw, Fil. flex hd., 1/4-20 x 7/8
33	35319	Seal, Oil	90A	35043	Tube, Carburetor
34	35320	Shaft, Governor	91	*33263	Gasket, Carburetor to intake pipe
35	31707A	Spacer Assy., Governor	92	35304	Pipe, Intake
36	35479	Washer, Flat	93	35522	Link, Governor
37	35321	Gear Assy., Governor	94	35524	Bracket Assy., Control (Incl. Nos. 94A & 94B)
38	35322	Spool, Governor	94A	33802	Spring, Compression
39	29193	Ring, Retaining	94B	650777	Screw, Fil. hd., 6-32 x 21/32
40	650833	Screw, Hex washer hd. Powerlok, 1/4-20 x 1-3/16	94C	35525	Link, Control bracket
41	32589	Key, Flywheel	95	35523	Link, Governor spring
42	611093	Flywheel	96	650902	Screw, Hex washer hd. Sems, 10-32 x 7/16
43	650880	Washer, Lock	97	792028	Screw, Hex hd. Sems, 5/16-18 x 7/8
44	650881	Nut, Flywheel (Hex, 5/8-18)	98	*33515	Gasket, Intake pipe
45	35135	Solid State Assy.	99	35288	Brace, Intake pipe
45A	610118	Cover, Spark plug	100	650738	Screw, Hex washer spinlock hd. thread forming, 1/4-20 x 5/8
46	650872	Stud, Solid state assy.	101	35338A	Housing, Blower
47	650814	Screw, Hex hd. Sems, 10-24 x 1	102	30688	Screw, Hex hd. Sems, 1/4-20 x 1/2
49	*35306	Gasket, Cylinder head	103	29747B	Screw, Hex hd. Sems, 5/16-24 x 21/32
50	35307	Head Assy., Cylinder			
51	730218	Valve Guide Kit (Incl. 2 of No. 52)			
52	792035	Ring, Retaining			

*Indicates Parts Included in Gasket Set, Ref. No. 174.

REPAIR PARTS

12 H.P. 38" RIDING LAWN TRACTOR - MODEL NUMBER 017.254244
ENGINE TECUMSEH - MODEL NUMBER 143.386012

ENGINE



REPAIR PARTS

12 H.P. 38" RIDING LAWN TRACTOR - MODEL NUMBER 917.254244 ENGINE TECUMSEH - MODEL NUMBER 143.386012

ENGINE

Ref. No.	Part No.	Part Name	Ref. No.	Part No.	Part Name
104	35290	Cover, Cylinder head	134	*34912	Gasket, Air cleaner
105	650273	Screw, Fil. hd. Sems, 5/16-18 x 1/2	135	650784	Screw, Hex hd. taptite, w/flatwasher, 10-24 x 11/16
106	30688	Screw, Hex hd. Sems, 1/4-20 x 1/2	136	34911	Cover, Air cleaner
115	35411	Screen, Starter	150	650873	Screw, Hex hd. Sems, 1/4-20 x 3/4
115A		Pop Rivet (Can be purchased locally)	151A	611113	Coil Assy., Alternator (3 Amp D.C.) (Incl. Nos. 152, 153 & 154)
116	34113	Plug, Blower housing	152	610935	Diode
118	29774	Line, Fuel	153	610921	Connector Body
119	26460	Clamp, Fuel line	154	610922	Terminal, Female
119A	34279A	Filter, Fuel (Incl. No. 119)	158	35437	Clip, Oil fill tube
120	27793	Clip, Conduit	159	27275	Clip, Wire
121	28942	Screw, Hex washer hd. Sems, 10-32 x 3/8	169	30688	Screw, Hex hd. Sems, 1/4-20 x 1/2
125	35574	Tube, Oil fill	170	34346	Decal, Instruction
126	35576	Dipstick, Oil	171	632469	Carburetor (Incl. No. 91)
127	35499	"O" Ring	173	33605	Starter Motor (12 Volt)
128	34909	Body, Air cleaner	174	35331	Gasket Set (Incl. items marked *)
129	35108	Filter, Air cleaner (Flocked)	175	35332	"O" Ring Kit (Incl. items marked †)
130	34910	Element, Air cleaner			RPM Settings: Low Speed, 1700; High Speed, 3500.
131	650875	Screw, Fil. hd. Sems, 10-32 x 5-1/4			*Indicates Parts Included in Gasket Set, Ref. No. 174.
132	*33629	Gasket, Air cleaner elbow			†Indicates Parts Included in Gasket Set, Ref. No. 175.
132A	35516	Bracket			
132B	30200	Screw, Hex washer hd., self-tap Sems, 10-24 x 9/16			
133	35286	Adapter, Air cleaner			

CARBURETOR NO. 632469

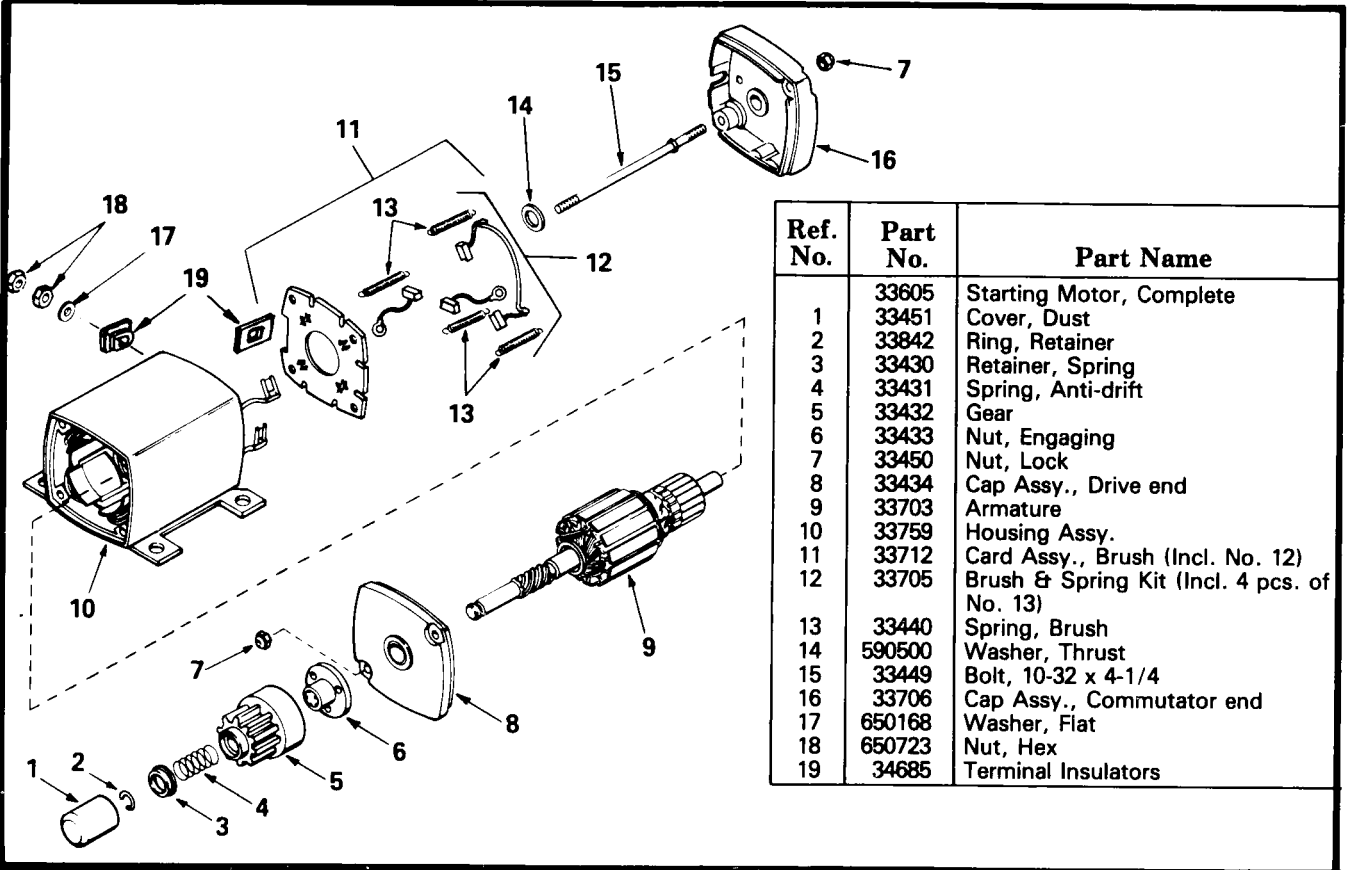
Ref. No.	Part No.	Part Name
	632469	Carburetor
1	632471	Shaft & Lever Assy., Throttle
2	632244	Spring, Throttle return
3	632245	Shutter, Throttle
4	650506	Screw, Rd. hd., 4-40 x 3/16
5	630766	Spring, Idle regulating screw
5A	630766	Spring, Main adjustment screw
6	650417	Screw, Idle regulating
7	632472	Shaft & Lever Assy., Choke
8	632473	Spring, Return
9	632429	Shutter, Choke
10	630748	Plug, Welch
11	631027	Plug, Welch
12	631021	Inlet Needle, Seat & Clip Assy. (Incl. No. 13)
13	631022	Clip, Inlet needle
14	632019	Float, Carburetor
15	631024	Shaft, Float
16	631867	Bowl, Float
21	27110	Gasket, Bowl-to-body
22	632470	Nut, Float bowl
23	630740	"O" Ring, Adjustment screw
24	632281	Screw, Idle adjustment
25	631028	Gasket, Bowl-to-body
27	631184	Washer
29	631971	Seal, Dust
29A	631183	Seal, Dust
30	630739	Washer, Flat
31	631775	Fitting, Fuel

REPAIR PARTS

12 H.P. 38" RIDING LAWN TRACTOR - MODEL NUMBER 917.254244
 ENGINE TECUMSEH - MODEL NUMBER 143.386012

ENGINE

STARTER MOTOR NO. 33605



Ref. No.	Part No.	Part Name
	33605	Starting Motor, Complete
1	33451	Cover, Dust
2	33842	Ring, Retainer
3	33430	Retainer, Spring
4	33431	Spring, Anti-drift
5	33432	Gear
6	33433	Nut, Engaging
7	33450	Nut, Lock
8	33434	Cap Assy., Drive end
9	33703	Armature
10	33759	Housing Assy.
11	33712	Card Assy., Brush (Incl. No. 12)
12	33705	Brush & Spring Kit (Incl. 4 pcs. of No. 13)
13	33440	Spring, Brush
14	590500	Washer, Thrust
15	33449	Bolt, 10-32 x 4-1/4
16	33706	Cap Assy., Commutator end
17	650168	Washer, Flat
18	650723	Nut, Hex
19	34685	Terminal Insulators