

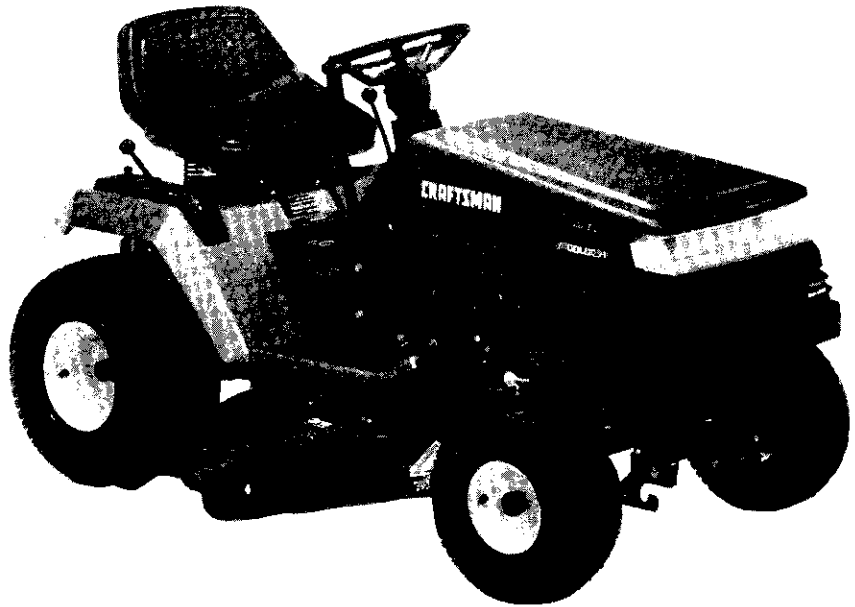
SEARS

**OWNER'S
MANUAL**

**MODEL NO.
917.255440**

Caution:
Read and follow
all Safety Rules
and Instructions
Before Operating
This Equipment

3One™
Convertible



CRAFTSMAN®

12.5 HP I/C

ELECTRIC START

3 in One Convertible

42" MOWER DECK

6 SPEED TRANSAXLE

LAWN TRACTOR

- Assembly
- Operation
- Customer Responsibilities
- Service and Adjustment
- Repair Parts



SAFETY RULES

Safe Operation Practices for Ride-On Mowers



IMPORTANT: THIS CUTTING MACHINE IS CAPABLE OF AMPUTATING HANDS AND FEET AND THROWING OBJECTS. FAILURE TO OBSERVE THE FOLLOWING SAFETY INSTRUCTIONS COULD RESULT IN SERIOUS INJURY OR DEATH.

I. GENERAL OPERATION

- Read, understand, and follow all instructions in the manual and on the machine before starting.
- Only allow responsible adults, who are familiar with the instructions, to operate the machine.
- Clear the area of objects such as rocks, toys, wire, etc., which could be picked up and thrown by the blade.
- Be sure the area is clear of other people before mowing. Stop machine if anyone enters the area.
- Never carry passengers.
- Do not mow in reverse unless absolutely necessary. Always look down and behind before and while backing.
- Be aware of the mower discharge direction and do not point it at anyone. Do not operate the mower without either the entire grass catcher or the guard in place.
- Slow down before turning.
- Never leave a running machine unattended. Always turn off blades, set parking brake, stop engine, and remove keys before dismounting.
- Turn off blades when not mowing.
- Stop engine before removing grass catcher or unclogging chute.
- Mow only in daylight or good artificial light.
- Do not operate the machine while under the influence of alcohol or drugs.
- Watch for traffic when operating near or crossing roadways.
- Use extra care when loading or unloading the machine into a trailer or truck.

II. SLOPE OPERATION

Slopes are a major factor related to loss-of-control and tipover accidents, which can result in severe injury or death. All slopes require extra caution. If you cannot back up the slope or if you feel uneasy on it, do not mow it.

DO:

- Mow up and down slopes, not across.
- Remove obstacles such as rocks, tree limbs, etc.
- Watch for holes, ruts, or bumps. Uneven terrain could overturn the machine. *Tall grass can hide obstacles.*
- Use slow speed. Choose a low gear so that you will not have to stop or shift while on the slope.
- Follow the manufacturer's recommendations for wheel weights or counterweights to improve stability.
- Use extra care with grass catchers or other attachments. These can change the stability of the machine.
- Keep all movement on the slopes *slow* and *gradual*. Do not make sudden changes in speed or direction.
- Avoid starting or stopping on a slope. If tires lose traction, disengage the blades and proceed slowly *straight* down the slope.

DO NOT:

- *Do not* turn on slopes unless necessary, and then, turn slowly and gradually downhill, if possible.
- *Do not* mow near drop-offs, ditches, or embankments. The mower could suddenly turn over if a wheel is over the edge of a cliff or ditch, or if an edge caves in.
- *Do not* mow on wet grass. Reduced traction could cause sliding.
- *Do not* try to stabilize the machine by putting your foot on the ground.
- *Do not* use grass catcher on steep slopes.

III. CHILDREN

Tragic accidents can occur if the operator is not alert to the presence of children. Children are often attracted to the machine and the mowing activity. *Never* assume that children will remain where you last saw them.

- Keep children out of the mowing area and under the watchful care of another responsible adult.
- Be alert and turn machine off if children enter the area.
- Before and when backing, look behind and *down* for small children.
- Never carry children. They may fall off and be seriously injured or interfere with safe machine operation.
- Never allow children to operate the machine.
- Use extra care when approaching blind corners, shrubs, trees, or other objects that may obscure vision.

IV. SERVICE

- Use extra care in handling gasoline and other fuels. They are flammable and vapors are explosive.
 - Use only an approved container.
 - Never remove gas cap or add fuel with the engine running. Allow engine to cool before refueling. Do not smoke.
 - Never refuel the machine indoors.
 - Never store the machine or fuel container inside where there is an open flame, such as a water heater.
- Never run a machine inside a closed area.
- Keep nuts and bolts, especially blade attachment bolts, tight and keep equipment in good condition.
- Never tamper with safety devices. Check their proper operation regularly.
- Keep machine free of grass, leaves, or other debris build-up. Clean oil or fuel spillage. Allow machine to cool before storing.
- Stop and inspect the equipment if you strike an object. Repair, if necessary, before restarting.
- Never make adjustments or repairs with the engine running.
- Grass catcher components are subject to wear, damage, and deterioration, which could expose moving parts or allow objects to be thrown. Frequently check components and replace with manufacturer's recommended parts, when necessary.
- Mower blades are sharp and can cut. Wrap the blade(s) or wear gloves, and use extra caution when servicing them.
- Check brake operation frequently. Adjust and service as required.



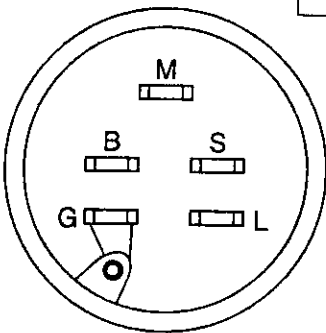
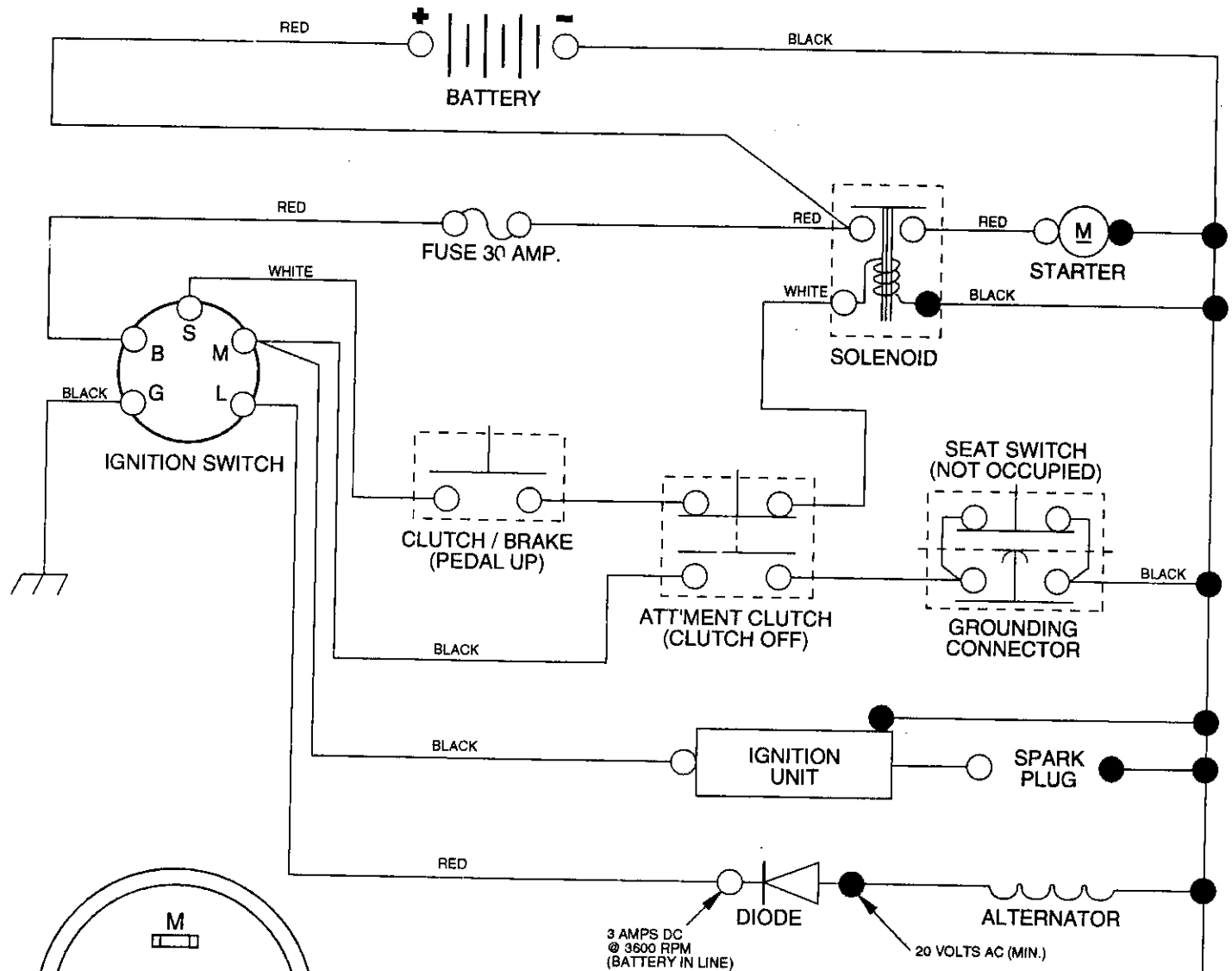
Look for this symbol to point out important safety precautions. It means CAUTION!!! BECOME ALERT!!! YOUR SAFETY IS INVOLVED.



CAUTION: Always disconnect spark plug wire and place wire where it cannot contact spark plug in order to prevent accidental starting when setting up, transporting, adjusting or making repairs.

12.5 HP 42" TRACTOR - - MODEL NUMBER 917.255440

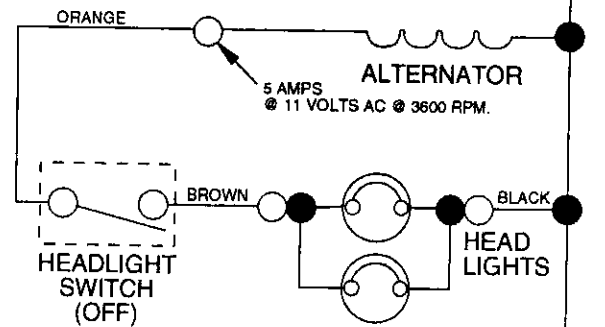
SCHEMATIC



IGNITION SWITCH

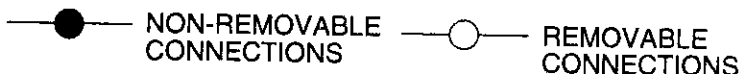
POSITION	CIRCUIT
OFF	M + G
ON	B + L
START	B + S

NOTE
 YOUR TRACTOR IS EQUIPPED WITH A SPECIAL ALTERNATOR SYSTEM. THE LIGHTS ARE NOT CONNECTED TO THE BATTERY, BUT HAVE THEIR OWN ELECTRICAL SOURCE. BECAUSE OF THIS, THE BRIGHTNESS OF THE LIGHTS WILL CHANGE WITH ENGINE SPEED. AT IDLE THE LIGHTS WILL DIM. AS THE ENGINE IS SPEEDED UP, THE LIGHTS WILL BECOME THEIR BRIGHTEST.



WIRING INSULATED CLIPS

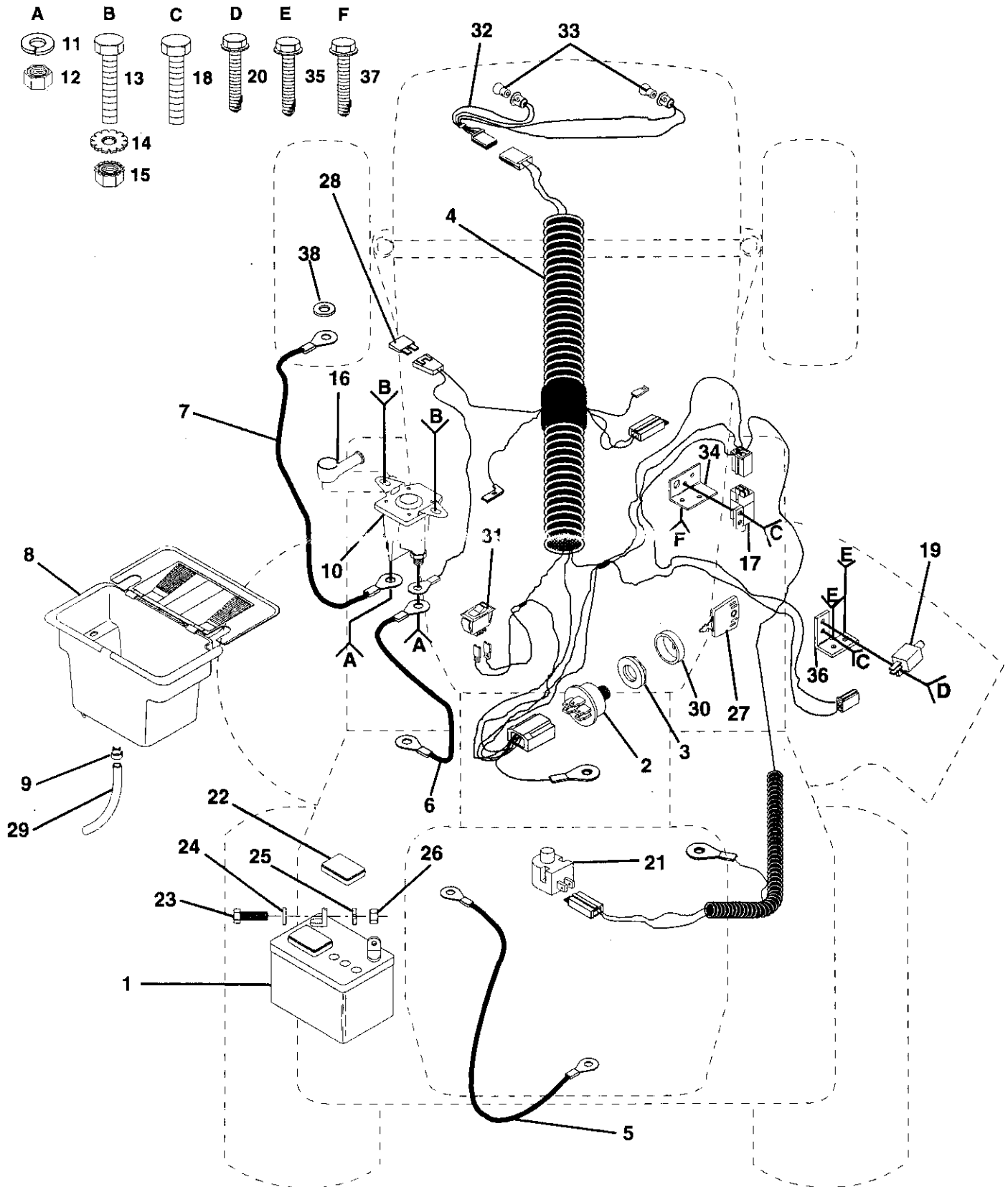
NOTE: If wiring insulated clips were removed for servicing of unit, they should be replaced to properly secure your wiring.



REPAIR PARTS

12.5 HP 42" TRACTOR - - MODEL NUMBER 917.255440

ELECTRICAL



REPAIR PARTS

12.5 HP 42" TRACTOR - - MODEL NUMBER 917.255440

ELECTRICAL

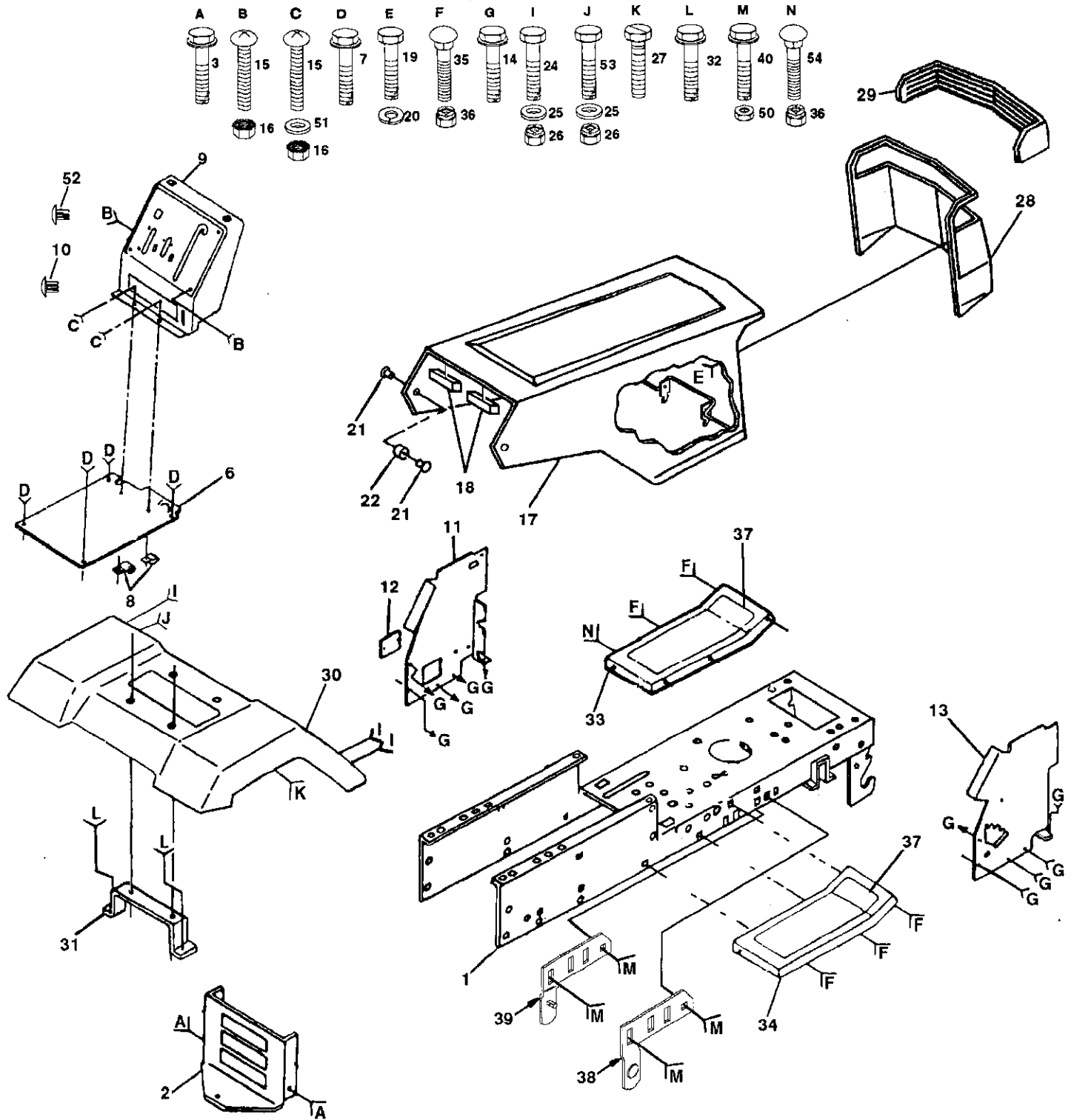
KEY PART NO.	NO.	DESCRIPTION
1	121265X	Battery 12 Volt 25 Amp
2	STD365402	Starter Swtch
3	124211X	Nut Ignition
4	132653	Harness Ign B&s Fender HI
5	4207J	Cable Ground 6ga 12"black
6	132202	Cable Battery 6 Ga 43"red
7	4799J	Cable Battery 6ga 11"red
8	129965	Case Battery Hng Mech W/lid
9	109596X	Clamp Hose Olive
10	138406	Solenoid
11	STD551125	Lockwasher
12	73350400	Nut Jam Hex 1/4-20 Unc
13	74780408	Bolt Fin Hex 1/4-20uncx1/2 Gr5
14	STD551225	Washer
15	STD541425	Nut
16	131563	Cover Terminal Red
17	109553X	Switch Intlk Clutch Red 4 Term
18	STD601005	Screw
19	104445X	Switch Intlk Clutch Red 2 Term
20	STD601005	Screw
21	121305X	Switch Plunger Nc Gray
22	121264X	Caps Battery 20/25/30 Amp
23	74760412	Bolt Hex Hd 1/4-20unc X 3/4
24	STD551025	Washer
25	STD551125	Washer
26	STD541025	Nut
27	109310X	Key Ign Molded Craftsman
28	108824X	Fuse 30 Amp Auto Green
29	109238X	Tube Plastic 12"
30	123620X	Cover Sw Key Blk 1 25 Text Slr
31	110712X	Switch Light Blk Blk Red
32	136849	Harness Socket Light (Includes Key # 33)
33	7662J	Bulb Light #1141
34	108236X	Bracket Switch Clutch
35	STD601005	Screw
36	130890	Bracket Switch Interlock
37	STD601005	Screw
38	STD551225	Washer

NOTE: All component dimensions given in U.S. inches
1 inch = 25.4 mm

REPAIR PARTS

12.5 HP 42" TRACTOR - - MODEL NUMBER 917.255440

CHASSIS AND ENCLOSURES



REPAIR PARTS

12.5 HP 42" TRACTOR - - MODEL NUMBER 917.255440

CHASSIS AND ENCLOSURES

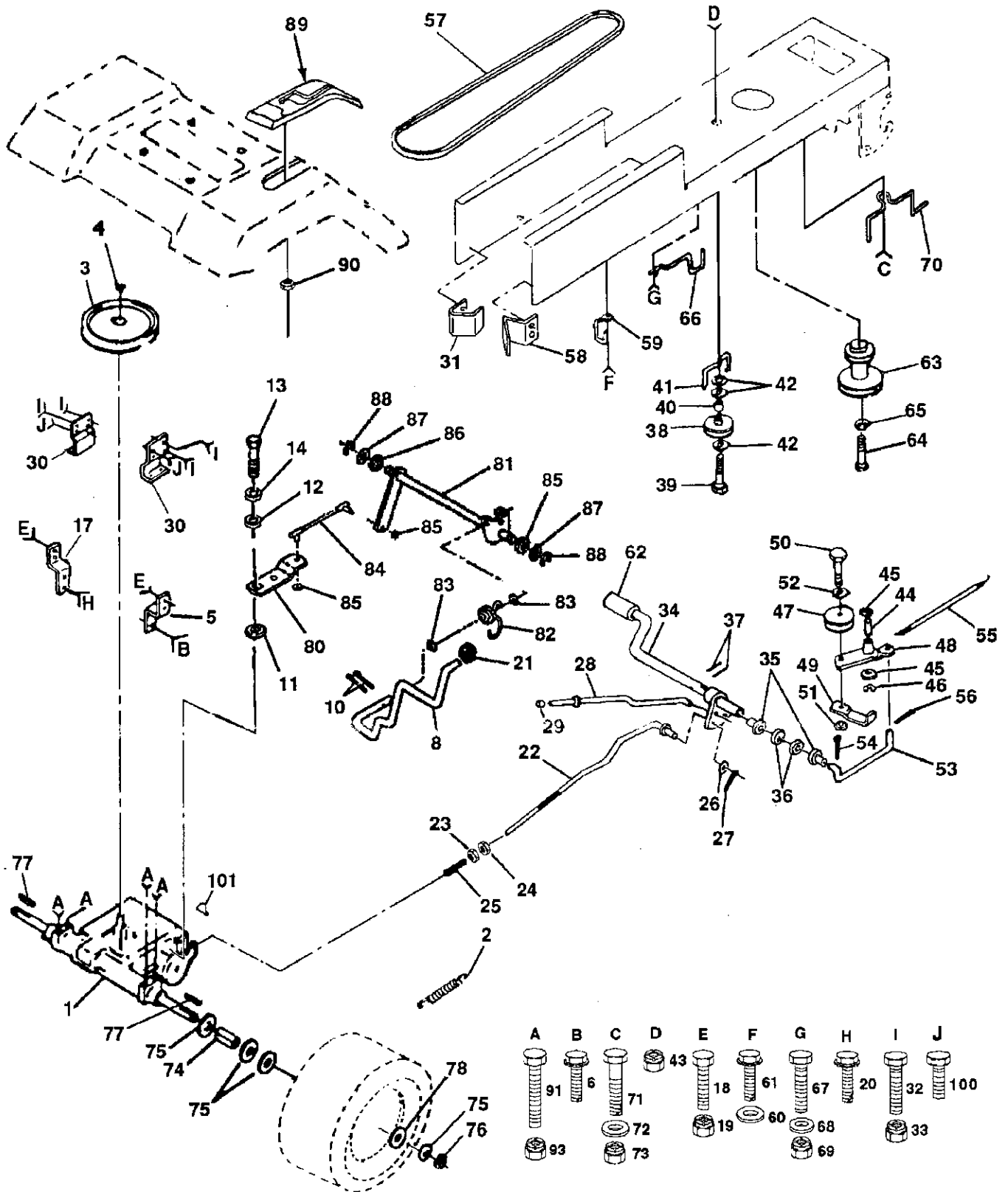
KEY NO.	PART NO.	DESCRIPTION
1	135034	Chassis Weldment
2	130805	Drawbar 11 Ga 46 5"wheel Base
3	17490612	Screw Thdrol 3/8-16x3/4 Ty-tt
6	126595X014	Saddle Silkscreened
7	17490608	Screw Thdrol 3/8-16x1/2 Ty-tt
8	126471X	Clip Insulated 406 Mtg Hole
9	137411X011	Dash Silkscreened
10	5479J	Plug Button Blk 359 Dia
11	122795X	Panel Pnt Dash Lh
12	121794X	Cover Access Black Square
13	126276X	Panel Dash Rh Weldment
14	17490608	Screw Thdrol 3/8-16x1/2 Ty-tt
15	74180512	Screw Mach Trhd 5/16-18uncx3/4
16	STD541431	Nut
17	131445X459	Hood Asm Pnt Weld Dover Slpe
18	126938X	Bumper Hood
19	STD512505	Screw
20	STD551125	Washer
21	122933X	Rivet Ratchet Nylon
22	124479X	Washer Nylon Blk 28x 75x 19
24	STD523707	Bolt
25	19131312	Washer 13/32 X 13/16 X 12 Ga
26	STD541437	Nut
27	17490608	Screw Thdrol 3/8-16x1/2 Ty-tt
28	126741X	Grille Black
29	124029X	Lens Headlight Bar Clear
30	126599X459	Fender Pnt
31	136619	Bracket Pnt Fender
32	17490612	Screw Thdrol 3/8-16x3/4 Ty-tt
33	105465X459	Footrest Pnt Lh
34	105464X459	Footrest Pnt Rh (dover Gray)
35	STD533707	Bolt
36	STD541437	Nut
37	105466X	Pad Footrest Rbr Sq Craftsman
38	134775	Bracket, Assembly, Pivot R.H.
39	134774	Bracket, Assembly, Pivot L.H.
40	STD533707	Bolt
50	STD541437	Nut
51	19131216	Washer 13/32 x 3/4 x 16 Ga.
52	134014	Plug, Dome Blk
53	74760614	Bolt, Hex 3/8-16 x 7/8
54	72140608	Bolt, Carriage 3/8-16 x 3/4

NOTE: All component dimensions given in U.S. inches
1 inch = 25.4 mm

REPAIR PARTS

12.5 HP 42" TRACTOR -- MODEL NUMBER 917.255440

DRIVE



REPAIR PARTS

12.5 HP 42" TRACTOR - - MODEL NUMBER 917.255440

DRIVE

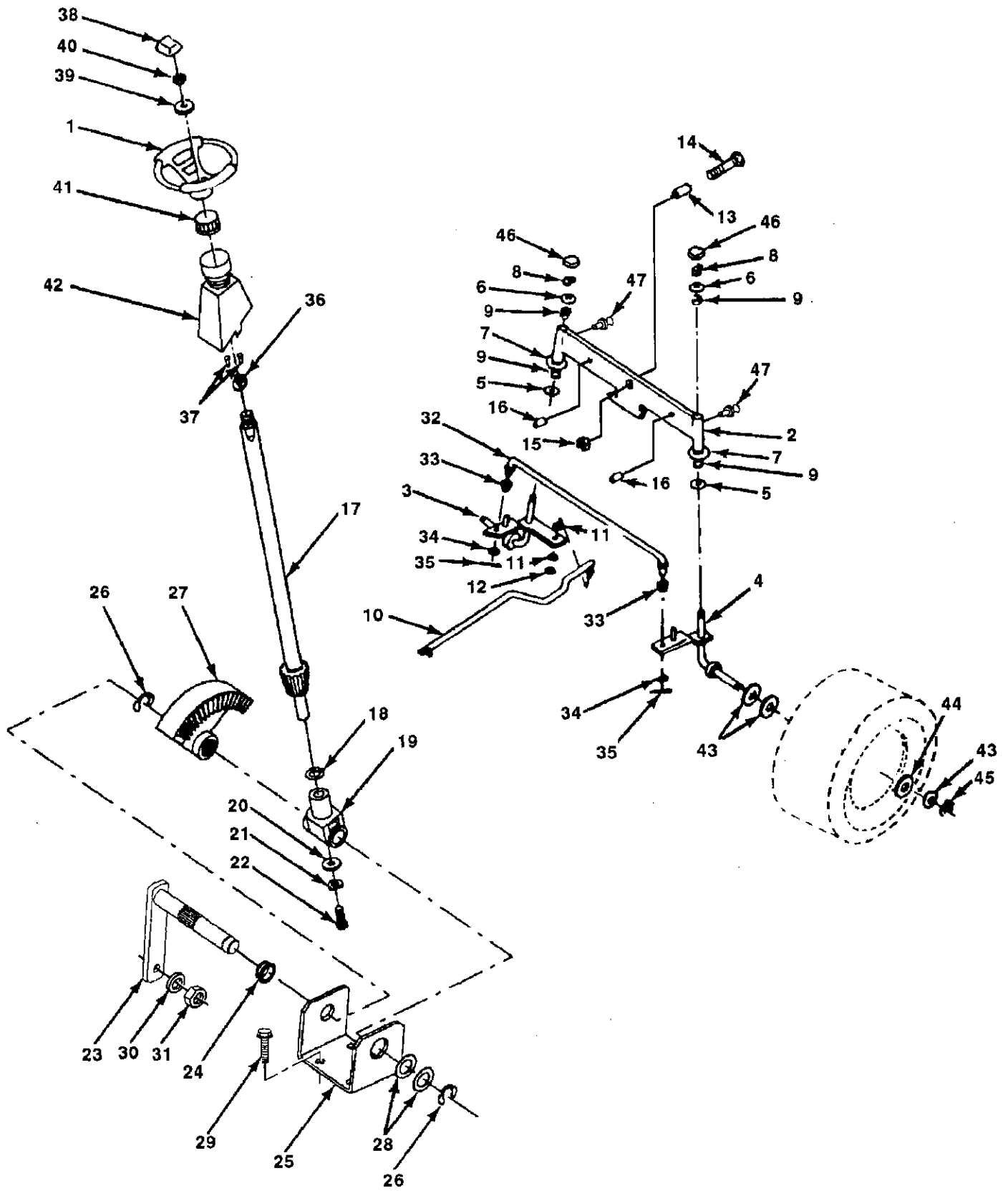
KEY PART NO. NO.	DESCRIPTION	KEY PART NO. NO.	DESCRIPTION
1 137363	Transaxle 6 sp. Dana 4360-48	50 STD523715	Bolt
2 110422X	Spring Extension Brake	51 STD541437	Nut
3 123666X	Pulley Transaxle 18" tires	52 STD551037	Washer
4 12000028	Ring Retainer # 5100-62	53 105710X	Link Clutch 7 66
5 121520X	Strap Torque Rh Pnt Blk	54 STD561210	Pin
6 17490512	Screw Thdrol 5/16-18 X 3/4 Tyt	55 105709X	Spring Return Clutch 6 75
8 127270	Lever Shift Weld Pnt	56 STD561210	Pin
10 76020416	Pin Cotter	57 130801	V-belt Ground Drive 95 25
11 105701X	Washer Shift Plate	58 127274X	Keeper Belt Rh Lt Pnt/zinc 16g
12 19151216	Washer 15/32 x 3/4 x 16 Ga.	59 136715	Keeper Belt Chassis Span Ctr
13 71040412	Bolt Fin Hex 1/4-28unfx3/4 Gr8	60 19131312	Washer 13/32 X 13/16 X 12 Ga
14 STD551125	Washer	61 17490612	Screw Thdrol 3/8-16x3/4 Ty-tt
17 121520X	Strap Pnt Torque Lh	62 8883R	Cover Pedal Blk Round
18 STD523707	Bolt	63 134825	Pulley Engine
19 STD541437	Nut	64 71170764	Bolt Fin Hex 7/16-20 x 4 Gr.5
20 17490512	Screw Thdrol 3/8-16x3/4 Ty-tt	65 STD551143	Washer
21 106933X	Knob Rd 1/2-13 Plstc Thds Blk	66 129921	Keeper Belt Engine Lh Lt
22 130804	Rod, Brake	67 STD523710	Bolt
23 STD541437	Locknut	68 19131312	Washer 13/32 X 13/16 X 12 Ga
24 STD541237	Nut	69 STD541437	Nut
25 106888X	Spring Rod Brake 2 00 Zinc	70 134683	Guide Belt Dr Mower Rh
26 STD551037	Washer	71 STD523710	Bolt
27 STD561210	Pin	72 19132012	Washer 13/32 X 1-1/4 X 12 Ga
28 128904	Rod Brake Parking Lt	73 STD541437	Nut
29 124236X	Cap Parking Brake Red	74 109502X	Spacer Split 80 X 94
30 130807	Bracket Mtg Transaxle	75 121749X	Washer 25/32 X 1 1/4 X 16 Ga
31 127275X	Keeper Belt Lh Lt 14 Ga	76 STD581075	E Ring
32 STD523107	Bolt	77 123583X	Key Square 2 0 X 1845/ 1865
33 STD541431	Nut	78 121748X	Washer 25/32 X 1 5/8 X 16ga
34 122424X	Shaft Asm Pedal Foot 1 930	80 131488	Arm, Shift
35 120183X	Bearing Nylon Blk 629 Id	81 136932	Shaft Asm., Cross Stretch
36 STD551062	Washer	82 123782X	Spring Torsion
37 STD571810	Roll Pin	83 19171216	Washer 17/32 x 3/4 x 16 Ga.
38 123674X	Pulley Idler Flat	84 132182	Rod Tie Shft. Adj. Ball
39 STD523727	Bolt	85 73530400	Nut, Nylock
40 4470J	Spacer Split 395 X 59 Bzp	86 71208	Bushing Pivot
41 109070X	Keeper Belt Retainer	87 19212016	Washer
42 19131312	Washer 13/32 X 13/16 X 12 Ga	88 12000008	Ring, E
43 STD541437	Nut	89 131636	Console Shift 6sp W/ign Lt
44 105706X	Bearing, Nylon	90 124346X	Nut Self-thd Wsh-hd 1/4 Zinc
45 110812X	Washer Hardened	91 74760540	Bolt, Hex 5/16-18 x 2-1/2
46 12000039	Ring Klip #15304-50	93 STD541431	Nut, Crownlock 5/16-18 UNC
47 127783	Pulley Idler V Groove Plastic	100 17490612	Screw Thdrol 3/8 - 16 x 3/4
48 123789X	Bellcrank Asm	101 2228M	Key, Woodruff
49 123205X	Retainer Belt Style Spring		

NOTE: All component dimensions given in U.S. inches
1 inch = 25.4 mm

REPAIR PARTS

12.5 HP 42" TRACTOR - - MODEL NUMBER 917.255440

STEERING ASSEMBLY



REPAIR PARTS

12.5 HP 42" TRACTOR - - MODEL NUMBER 917.255440

STEERING ASSEMBLY

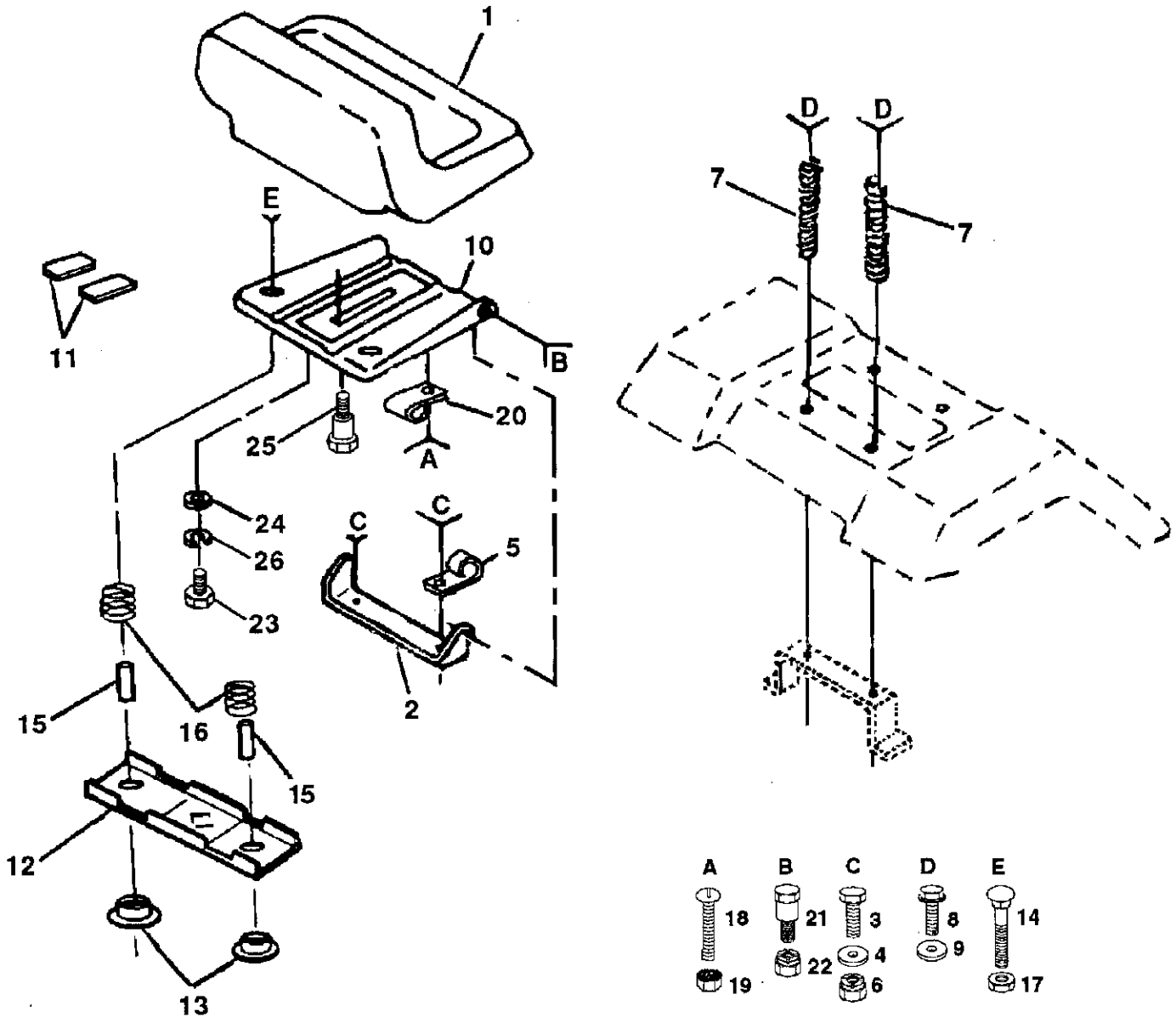
KEY NO.	PART NO.	DESCRIPTION
1	133741	Wheel Steering
2	133988	Axle Asm Front
3	135227	Spindle Asm Lh
4	135228	Spindle Asm Rh
5	6266H	Bearing Race Thrust Harden
6	121748X	Washer 25/32 X 1 5/8 X 16ga
7	19272016	Washer 27/32 X 1 1/4 X 16 Ga
8	12000029	Ring Klip #t5304-75
9	3366R	Bearing Col Strg Blk
10	130468	Link Drag Sol Ball Jt 20 064
11	STD551137	Lockwasher
12	73610600	Nut Fin Hex 3/8-24 Unf
13	110438X	Spacer Bearing Axle Front
14	74011056	Bolt Hex 5/8-11 Unc X 3-1/2
15	73901000	Nut Lock Flange 5/8-11 Unc
16	132624	Pin Axle 5/8 X 1 55/1 54 Lg
17	132614	Shaft Asm Strg 5/8 X 15 19 Lt
18	57079	Washer Thrust 515x 750x 033
19	124035X	Support Shaft
20	126684X	Washer Shim 1/4 X 5/8 X 062
21	STD551125	Washer
22	71070410	Screw Hex Socket 1/4-20 X 5/8
23	127501	Shaft Asm Pittman
24	109816X	Nyliner Snap In
25	124036X	Bracket Steering
26	12000029	Ring Klip #t5304-75
27	136874	Gear Sector
28	6266H	Bearing Race Thrust Harden
29	17490612	Screw Thdrol 3/8-16x3/4 Ty-tt
30	STD551137	Lockwasher
31	73610600	Nut Fin Hex 3/8-24 Unf
32	130465	Rod Tie Wire Form 19 75 Mech
33	126847X	Bushing Link Drag
34	19131416	Washer 13/32 X 7/8 X 16ga
35	STD561210	Pin
36	132196	Bushing Strg 5/8 Id Dash
37	STD611005	Screw
38	133742	Insert Cap Strg Wh Au Gen Blk
39	19133808	Washer 13/32 X 2-3/8 X 8 Ga
40	STD541537	Gripco Nut
41	104820X	Adaptor Wheel Strg 640/ 635id
42	124417X	Boot Shaft Steering
43	121749X	Washer 25/32 X 1 1/4 X 16 Ga
44	121748X	Washer 25/32 X 1 5/8 X 16ga
45	12000029	Ring Klip #t5304-75
46	121232X	Cap Spindle Fr Top Blk
47	6855M	Fitting Grease

NOTE: All component dimensions given in U.S. inches
1 inch = 25.4 mm

REPAIR PARTS

12.5 HP 42" TRACTOR - - MODEL NUMBER 917.255440

SEAT ASSEMBLY



KEY PART NO. NO.

KEY PART NO.	NO.	DESCRIPTION
1	127438X	Seat V-450 Blk/red Craftsman
2	126656X	Bracket Pnt Pivot Seat (blk)
3	STD523707	Bolt
4	19131210	Washer 13/32 X 3/4 X 10 Ga
5	2751R	Clip Line Fuel 13/32 Mtg Hole
6	STD541437	Nut
7	124181X	Spring Seat Cprsn 2 250 Blk Zi
8	17490616	Screw Thdrol 3/8-16 X 1 Ty-tt
9	19131614	Washer 13/32 X 1 X 14 Ga
10	131451	Pan Pnt Seat (blk)
11	121251X	Strip Foam Gray Or Black
12	121246X	Bracket Pnt Mounting Switch
13	121248X	Bushing Snap Blk Nyl 50 Id
14	72050411	Bolt Rdhd Sht Nk 1/4-20x1-3/8

KEY PART NO. NO.

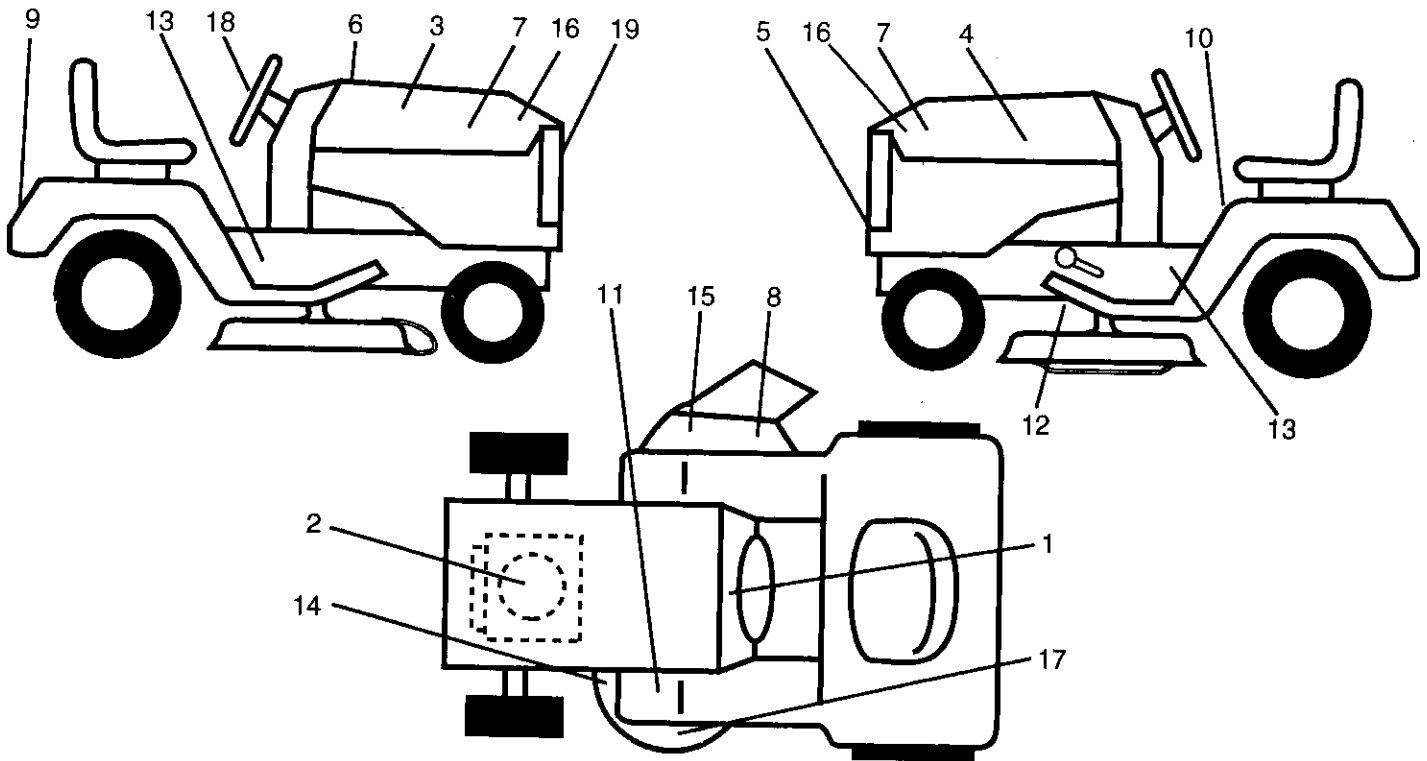
KEY PART NO.	NO.	DESCRIPTION
15	134300	Spacer Split 28 X 88 Zinc
16	121250X	Spring Cprsn 1 27 Blk Pnt
17	123976X	Nut Lock 1/4 Lge Flg Gr 5 Zinc
18	STD511005	Screw
19	73951000	Nut Keps #10-32 Unf
20	4171R	Clip Insulated 11/32 Mtg Hole
21	105529X	Bolt Shoulder 5/16-18 Unc Blkz
22	STD541431	Nut
23	74780814	Bolt Fin Hex 1/2-13 X 7/8 Gr 5
24	19171912	Washer 17/32 X 1-3/16 X 12 Ga
25	127018X	Bolt Shoulder 5/16-18 X 62
26	STD551150	Lockwasher

NOTE: All component dimensions given in U.S. inches
1 inch = 25.4 mm

REPAIR PARTS

12.5 HP 42" TRACTOR - - MODEL NUMBER 917.255440

DECALS



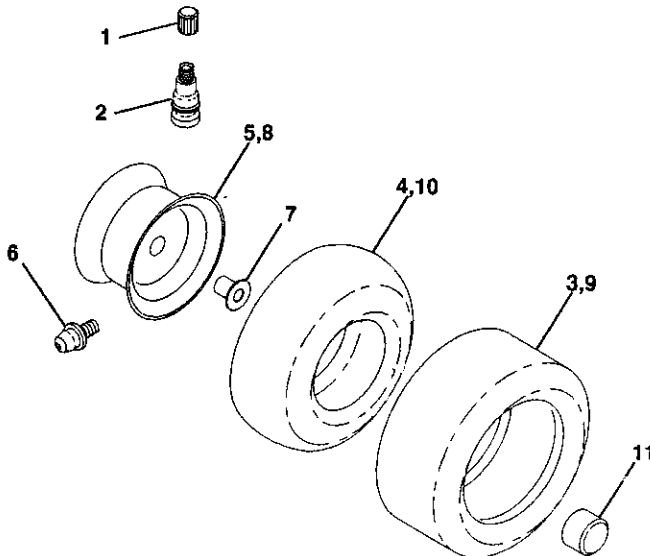
KEY PART NO. NO.

KEY PART NO.	NO.	DESCRIPTION
1	136794	Decal Instruction Operat Eng
2	127908	Decal Eng 12 5hp lc Gold Craft
3	138137	Decal Hood Rh Craftsman Lt4000
4	128382	Decal Hood Lh Craftsman Lt4000
5	132674	Decal Grille Lt4000 Craft Usa
6	133644	Decal Maint Cust Sears Domesti
7	136332	Decal Panel Side l/c Gold Wht
8	133178	Decal Mower 3 In One Conv
9	128314	Decal Fender Craftsman White
10	137537	Decal Caution English
11	4900J	Decal Clutch/brake English

KEY PART NO. NO.

KEY PART NO.	NO.	DESCRIPTION
12	109199X	Decal V-belt Dr Sch Tractor E
13	131473	Decal Chassis 6sp 42"
14	136832	Decal V-belt Schematic 42"eng
15	121343X	Decal Danger English
16	108631X	Decal II
17	133179	Decal Mower Qc System
18	132268	Decal Insr Wh Strg Crafts Usa
19	131265	Decal, Lightbox Grill
--	138311	Decal, Lift Handle
--	137747	Manual Owner's (English)
--	137748	Manual Owner's (Spanish)

WHEELS & TIRES



NOTE: All component dimensions given in U.S. inches
1 inch = 25.4 mm

KEY PART NO. NO.

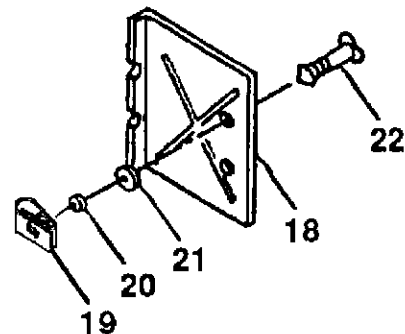
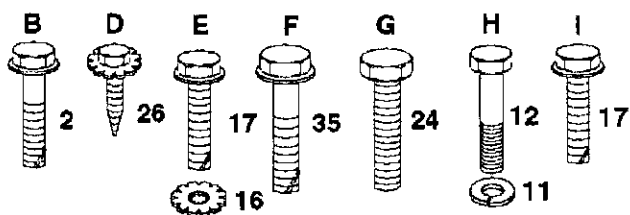
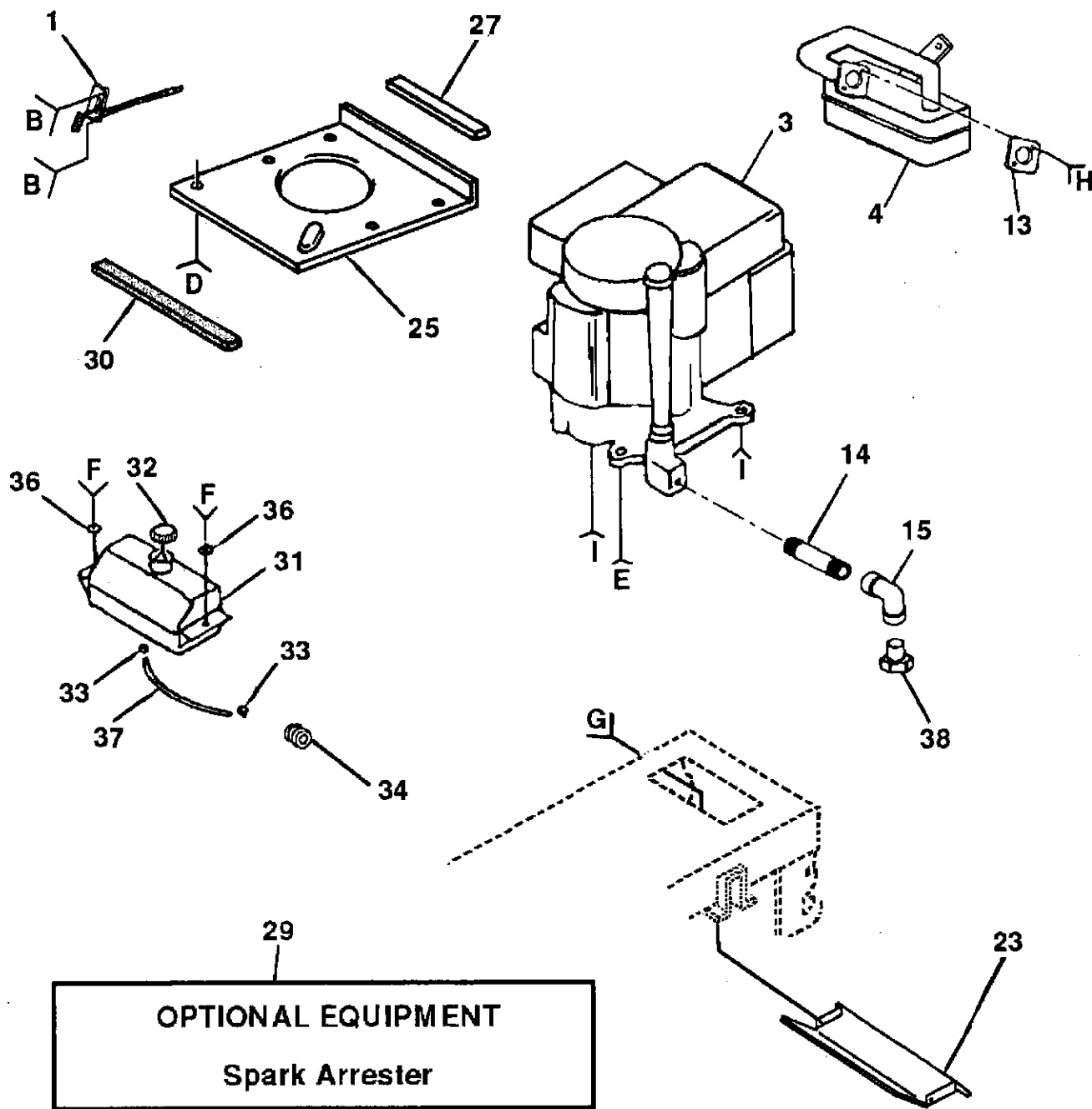
KEY PART NO.	NO.	DESCRIPTION
1	59192	Cap Valve Tire
2	65139	Stem Valve
3	106222X	Tire F Ts 15 X 6 0 - 6 Service
4	59904	Tube Front (Service Item Only)
5	106732X311	Rim Asm 6"front White Service
6	278H	Fitting Grease (Front Wheel Only)
7	9040H	Bearing Flange (Front Wheel Only)
8	106108X311	Rim Asm 8"rear White Service
9	106268X	Tire R Ts 18x9 5-8 C Service
10	7152J	Tube Rear (Service Item Only)
11	104757X	Cap Axle Blk 1 50 X 1 00

NOTE: All component dimensions given in U.S. inches
1 inch = 25.4 mm

REPAIR PARTS

12.5 HP 42" TRACTOR - - MODEL NUMBER 917.255440

ENGINE



REPAIR PARTS

12.5 HP 42" TRACTOR - - MODEL NUMBER 917.255440

ENGINE

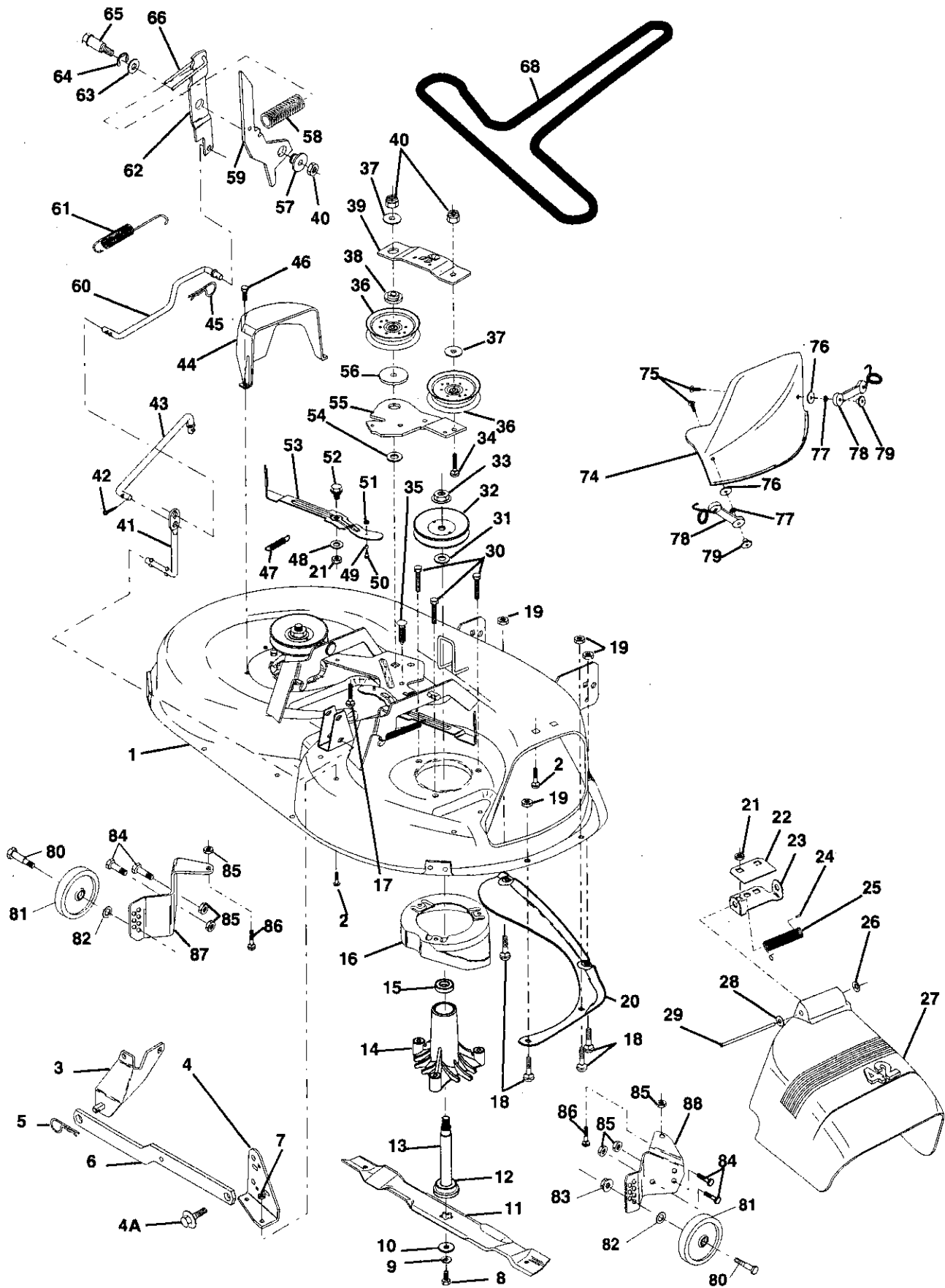
KEY NO.	PART NO.	DESCRIPTION
1	132759	Control Throt Rh Blk Pdl 15 10
2	17720410	Screw Hex Thd Cut 1/4-20x5/8 T
3	137418	Engine B&s 12 5 HP lq Dual 1 Vt Model Number 286707, Type 0441-01
4	137348	Muffler Lt B&s
11	STD551131	Lockwasher
12	71070510	Screw Hexhd Cap 5/16-18x5/8
13	125593X	Gasket 1 313 Id Tin Plated
14	13280324	Nipple Pipe 3/8 Npt X 3"
15	13200300	Elbow Std 90 Degree 3/8-18 Npt
16	STD551237	Washer
17	17490620	Screw Thdrol 3/8-16x1-1/4 Tytt
18	136718	Shield Pnt Heat
19	105839X	Receptacle 1/4 Turn Dacrotized
20	105838X	Retainer 1/4 Turn 365odx 222id
21	STD551025	Washer
22	123650X	Stud 1/4 Turn (replaces 105751
23	128953X	Shield Pnt Heat Browning Grass
24	STD601005	Screw
25	124027X	Shield Pnt Heat Hood Lt
26	17030808	Screw Spiderloc Hexhd#8x1/2 Ab
27	105037X	Strip Foam 18"
29	137180	Arrestor Spark
30	127057X	Pinch Weld Hood Black 2 00
31	109202X	Tank Fuel 1 25 Fr
32	123549X	Cap Asm Fuel W/sym Vented
33	123487X	Clamp Hose Blk
34	124028X	Bushing Snap Nyl Blk Fuel Line
35	17490412	Screw Hexwsh Thdrol 1/4-20x3/4
36	19091416	Washer 9/32 X 7/8 X 16ga
37	101335K	Line Fuel 9 50"
38	---	Plug Oil Drain (Order From Engine Manufacturer)

NOTE: All component dimensions given in U.S. inches
1 inch = 25.4 mm

REPAIR PARTS

12.5 HP 42" TRACTOR - - MODEL NUMBER 917.255440

42" MOWER DECK



REPAIR PARTS

12.5 HP 42" TRACTOR - - MODEL NUMBER 917.255440

42" MOWER DECK

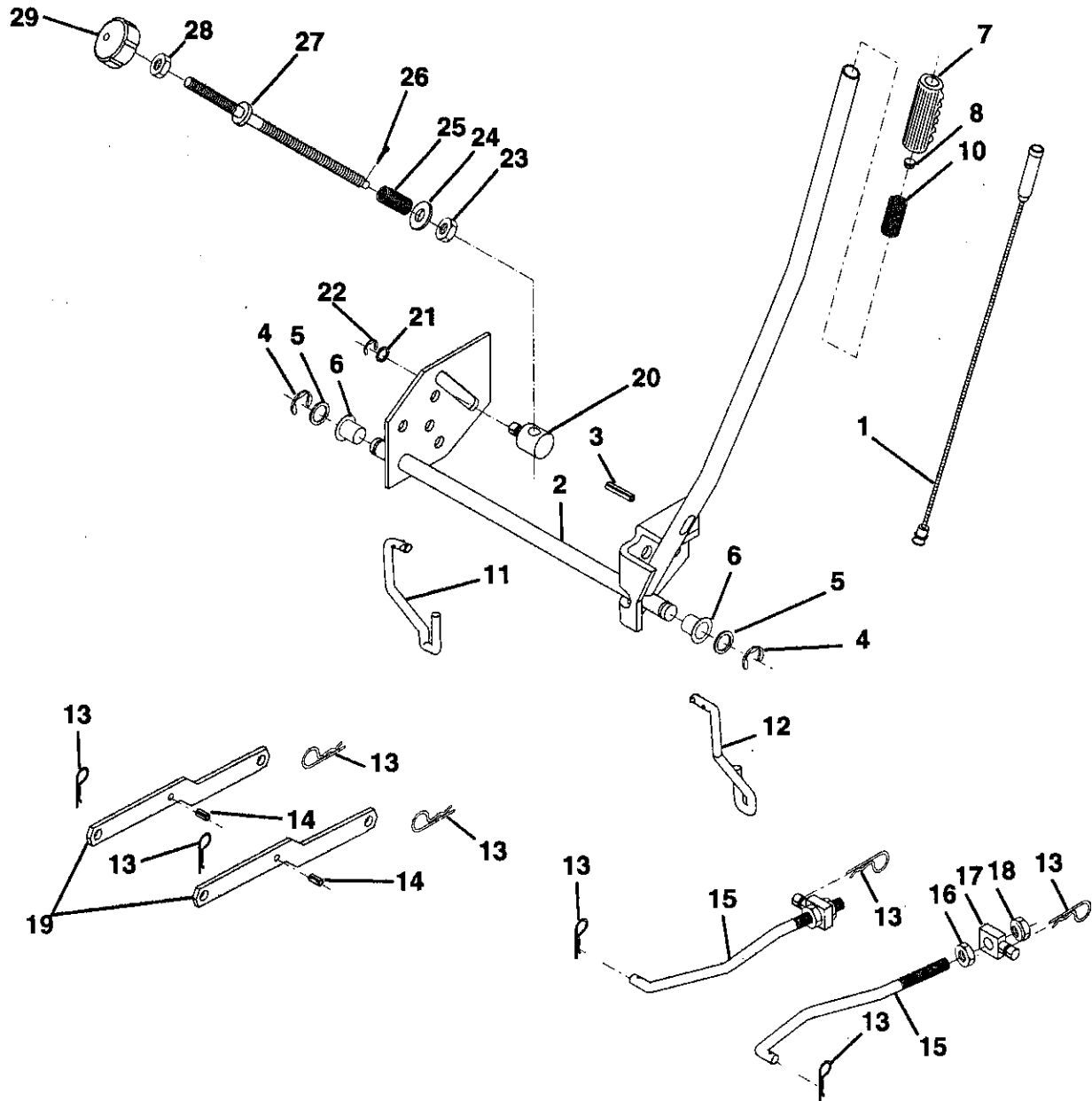
KEY PART NO.	NO.	DESCRIPTION	KEY PART NO.	NO.	DESCRIPTION
1	138024	Mower Deck Assembly, 42"	45	STD624003	Retainer
2	STD533107	Bolt	46	17720410	Screw, Hex Head, Thread Cutting 1/4-20 x 5/8
3	138017	Bracket Asm Fr. Sway Bar	47	131335	Spring, Extension
4	138440	Bracket Asm Deck 42" Sway Bar	48	133944	Washer, Hardened
4A	132827	Bolt, Shoulder	49	133940	Roller Assembly, Cam Follower
5	STD624008	Retainer Spring	50	131340	Bolt, Shloulder #10-24 Grade 5
6	130832	Arm, Suspension, Rear	51	STD541410	Locknut
7	73800500	Locknut 5/16-18	52	105529X	Bolt, Shoulder 5/16-18 UNC
8	850857	Bolt 3/8-24 x 1.25 Grade 8	53	131845	Arm Assembly, Pad, Brake
9	STD551137	Washer, Lock	54	133943	Washer, Hardened
10	129962	Washer, Hardened	55	133844	Arm, Idler
11	134149	Blade, Mulching, 42" Mower Deck	56	122052X	Spacer, Retainer
12	129895	Bearing, Ball	57	127498	Bushing, Large, Brass
13	133172	Shaft Assembly, Mandrel, Vented (Includes Key Number 6)	58	128759	Spring, Mower Clutch
14	128774	Housing, Mandrel, Vented	59	133573	Arm, Clutch, Primary
15	110485X	Bearing, Ball, Mandrel	60	134666	Rod, Clutch, Primary, with Nibs
16	136929	Stripper, Vented Mower Deck	61	133435	Spring, Extension, Return
17	72110618	Bolt, Carriage 3/8-16 x 2-1/4	62	127847	Arm, Clutch, Secondary
18	72140505	Bolt, Carriage 5/16-18 x 5/8	63	121748X	Washer 25/32 x 1-5/8 x 16 Gauge
19	73800500	Locknut 5/16-18	64	12000029	Ring, Klip
20	136888	Baffle, Vortex	65	128903	Bolt, Shoulder 3/8-16 UNC x 1.44
21	STD541431	Nut	66	127845	Keeper, Spring
22	134753	Stiffener Bracket	67	106932X	Knob Rd 3/8-16 UNC
23	131267	Bracket, Deflector	68	130969	V-Belt, 42" Mower
24	105304X	Cap, Sleeve	74	136420	Mulcher Cover
25	123713X	Spring, Torsion, Deflector	75	71161010	Screw
26	110452X	Nut, Push	76	19061216	Washer #10
27	130968	Shield, Deflector	77	STD551110	Washer, Lock
28	19111016	Washer 11/32 x 5/8 x 16 Gauge	78	130758	Latch Assembly, Bagger
29	131491	Rod, Hinge	79	2029J	Nut, Weld
30	78158	Bolt 5/16-18 x 1.25	80	133814	Bolt, Shoulder
31	129963	Washer, Spacer	81	133957	Wheel, Gauge, Donut
32	129861	Pulley, Mandrel	82	19171512	Washer 17/32 x 15/16 x 12
33	73050900	Nut, Toplock 9/16	83	73980600	Nut, Crownlock 3/8 - 16
34	STD533717	Bolt	84	74760512	Bolt, Hex Head 5/16 - 18 UNC x 3/4
35	133835	Fastner, Christmas Tree	85	73510500	Nut, Keps 5/16 - 18 UNC
36	131494	Pulley, Idler, Flat	86	72110504	Bolt, Carriage 5/16 UNC x 1/2
37	19131612	Washer 13/32 x 1 x 12 Gauge	87	132263	Bracket, Gauge, Wheel LH
38	133502	Spacer, Idler Arm, Upper	88	132262	Bracket, Gauge, Wheel RH
39	133503	Stiffner, Idler Arm, Upper, Hardened	--	130794	Mandrel Assembly (Includes Key Numbers 5-8, 10-12, 39 and 41)
40	STD541437	Nut	--	138357	Mower Deck, Complete (Does Not Include Mulching Components)
41	133551	Rod, Pivot, with Nibs			
42	STD560907	Cotter Pin			
43	133504	Rod, Clutch, Secondary, with Nibs			
44	134236	Guard, Mandrel, LH			

NOTE: All component dimensions given in U.S. inches
1 inch = 25.4 mm

REPAIR PARTS

12.5 HP 42" TRACTOR - - MODEL NUMBER 917.255440

MOWER LIFT



REPAIR PARTS

12.5 HP 42" TRACTOR - - MODEL NUMBER 917.255440

MOWER LIFT

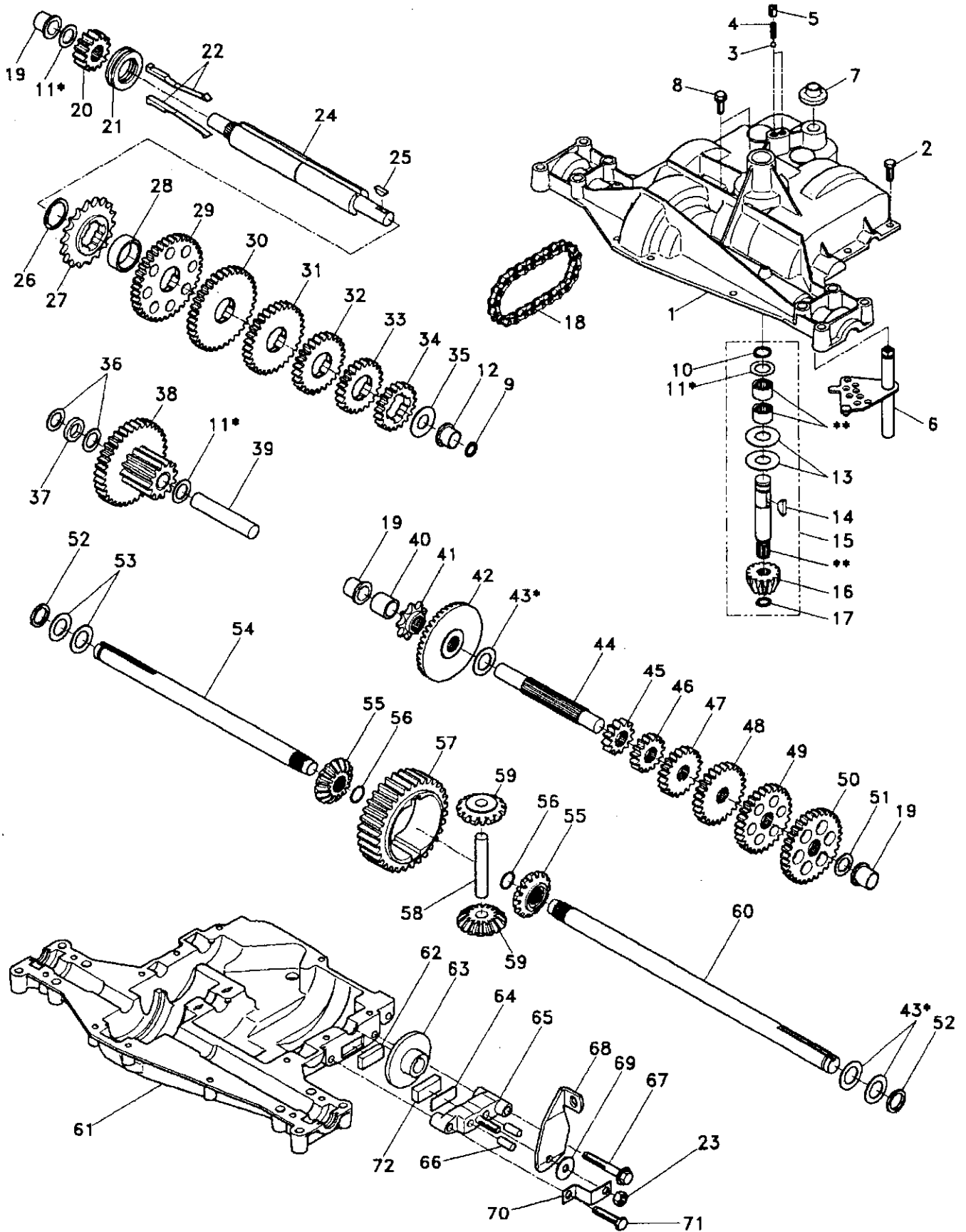
KEY PART NO.	PART NO.	DESCRIPTION
1	136973	Lift Lever Inner Wire Asm.
2	122507X	Shaft Asm Lift
3	138284	Pin Groove
4	12000002	E Ring #5133-62
5	19211621	Washer 21/32 x 1 x 21 Ga
6	120183X	Bearing Nylon
7	125631X	Grip Handle Fluted
8	122365X	Button Plunger Red
10	122512X	Spring Cprsn
11	134619	Link Lift Lh Fixed Length
12	135388	Link Lift Rh Fixed Length
13	4939M	Retainer Spring
14	135563	Pin Roll Slit 5/16 x 1.25
15	127218	Link Front
16	73350800	Nut Jam Hex 1/2-13 Unc
17	130171	Trunnion Blk Zinc
18	73800800	Nut Lock W/Wsh 1/2-13 Unc
19	130832	Arm Suspension Rear
20	110810X	Trunnion Dp Stop Dbl Thds Plt
21	19151216	Washer 15/32 x 3/4 x 16 Ga
22	12000037	Ring Klip #T5304-37
23	110807X	Nut Special
24	19131216	Washer 15/32 x 5/8 x 16 Ga
25	2876H	Spring 2-1/8"
26	76020308	Pin Cotter 3/32 x 1/2
27	126971X	Rod Adjust Lift
28	73350600	Nut Hex Jam 3/8-16 Unc
29	138057	Knob Infinite 3/8-16 Unc Black

NOTE: All component dimensions given in U.S. inches
1 inch = 25.4 mm

REPAIR PARTS

12.5 HP 42" TRACTOR - - MODEL NUMBER 917.255440

DANA TRANSAXLE - MODEL NUMBER 4360-48



REPAIR PARTS

12.5 HP 42" TRACTOR - - MODEL NUMBER 917.255440

DANA TRANSAXLE - MODEL NUMBER 4360-48

KEY PART NO. NO.	DESCRIPTION	KEY PART NO. NO.	DESCRIPTION
1 138248	Housing, Upper	41 105928X	Sprocket, 9 Teeth
2 2274J	Screw, Self-Tapping, Large 1/4-20 x .734	42 110084X	Gear, Bevel, 42 Teeth
3 134400	Ball, Detent	43 134394	* Assembly, Kit, Shim .750 Shaft
4 105904X	Spring, Detent	44 120473X	Shaft, Drive
5 105905X	Screw, Set	45 105933X	Gear, Spur, 12 Teeth
6 138235	Kit, Shifter Assembly	46 106151X	Gear, Spur, 15 Teeth
7 134399	Boot, Shifter	47 120407X	Gear, Spur, 20 Teeth
8 134791	Screw, Tapping w/Sealer	48 106589X	Gear, Spur, 25 Teeth
9 138241	Square Ring	49 120408X	Gear, Spur, 28 Teeth
10 2267J	Ring, Retaining	50 105937X	Gear, Spur, 31 Teeth
11 134793	* Assembly, Kit, Shim .625 Shaft	51 2226J	Washer, Plain .632 x 1.00 x .060
12 138240	Bearing, Flange	52 134401	Washer, Neoprene
13 120415X	Washer, Plain .632 x 1.38 x .046	53 2264J	Washer, Plain .758 x 1.25 x .031
14 2257J	Key, Woodruff, #9	54 120474X	Axle, L.H.
15 138234	Assembly, Kit, Input Shaft	55 110081X	Gear, Miter, 15 Teeth
16 110078X	Pinion, Bevel, 14 Teeth	56 105941X	Ring, Retaining
17 105909X	Ring, Retaining	57 110071X	Gear, Spur, 32 Teeth
18 105910X	Chain, 24 Pitches	58 120952X	Shaft, Cross
19 105911X	Bearing, Flange	59 110082X	Gear, Miter, 15 Teeth
20 138242	Gear, Spur, 14 Teeth	60 120475X	Axle, R.H.
21 138246	Collar, Clutch	61 138247	Housing, Lower
22 138236	Assembly, Kit, Clutch Keys	62 120961X	Puck, Friction
23 73810500	Locknut 5/16-24	63 7294J	Disc, Brake
24 138243	Shaft, Intermediate	64 108989X	Spacer
25 2244J	Key, Woodruff, #61	65 120953X	Jaw, Brake
26 105916X	Ring, Retaining	66 120954X	Pin, Dowel
27 120470X	Sprocket, 18 Teeth	67 134799	Screw, Self-Tapping, Large 5/16-18 x 2.25
28 110070X	Spacer	68 138244	Lever, Actuating
29 108977X	Gear, Spur, 37 Teeth	69 108996X	Washer, Plain .321 x 1.00 x .055
30 109254X	Gear, Spur, 35 Teeth	70 120956X	Bracket, Anti-Rotation
31 120405X	Gear, Spur, 30 Teeth	71 106596X	Screw, Self-Tapping, Large 5/16-18 x 1.44
32 108980X	Gear, Spur, 25 Teeth	72	Puck, Friction
33 120406X	Gear, Spur, 22 Teeth	73 120416X	Grease
34 134796	Gear, Spur, 19 Teeth		
35 105925X	Washer, Plain .640 x 1.37 x .061		
36 2232J	Washer, Plain .632 x 1.00 x .026		
37 108978X	Spacer .630 x 1.00 x .169		
38 110079X	Assembly, Gear, Combination of 12 Teeth and 35 Teeth		
39 124639X	Shaft, Idler		
40 120472X	Spacer .635 x .875 x .755		

* Use in combinations to maintain proper clearances

** Order Key No. 15

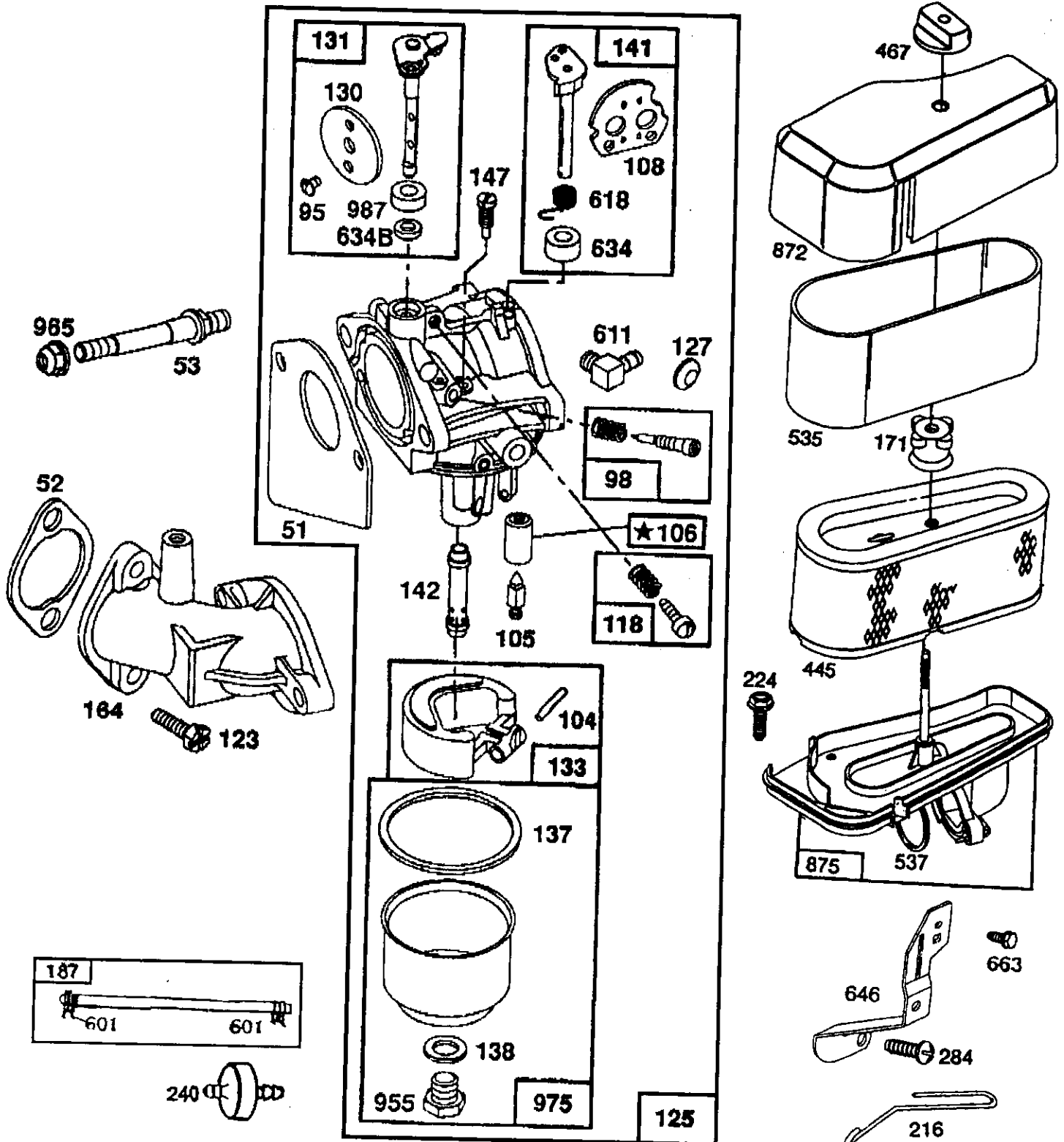
NOTE: All component dimensions given in U.S. inches
1 inch = 25.4 mm

REPAIR PARTS

12.5 HP 42" TRACTOR - - MODEL NUMBER 917.255440

BRIGGS & STRATTON ENGINE - MODEL NUMBER 286707, TYPE NUMBER 0441-01

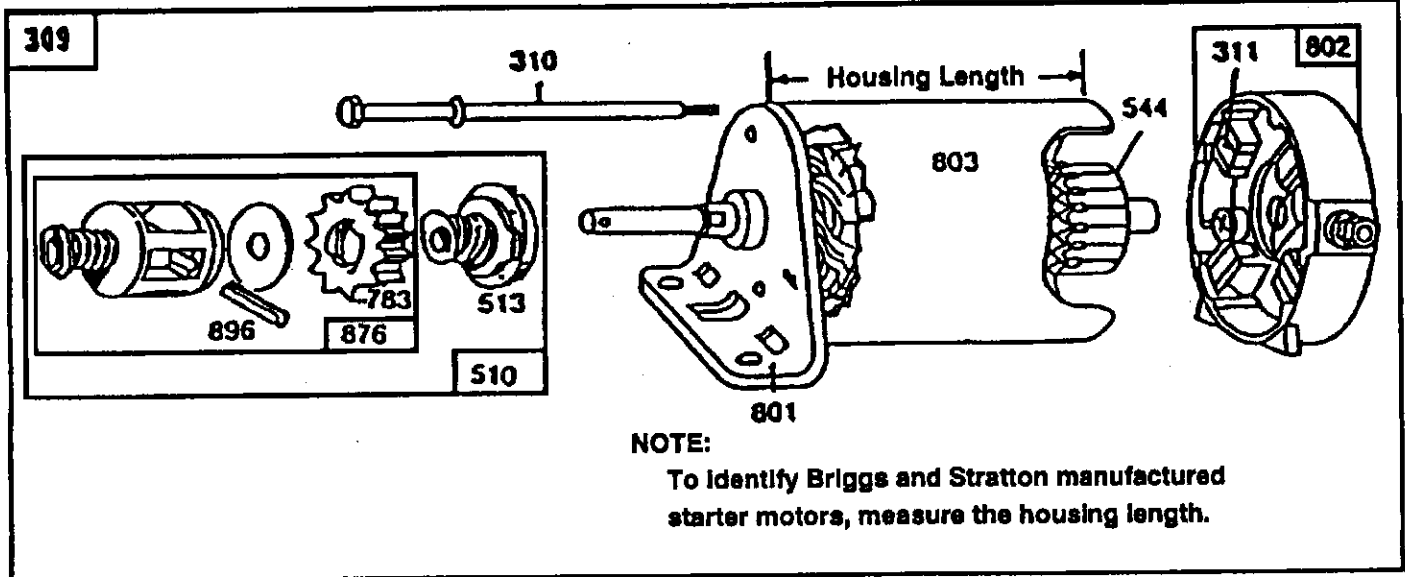
121 CARBURETOR OVERHAUL KIT



REPAIR PARTS

12.5 HP 42" TRACTOR - - MODEL NUMBER 917.255440

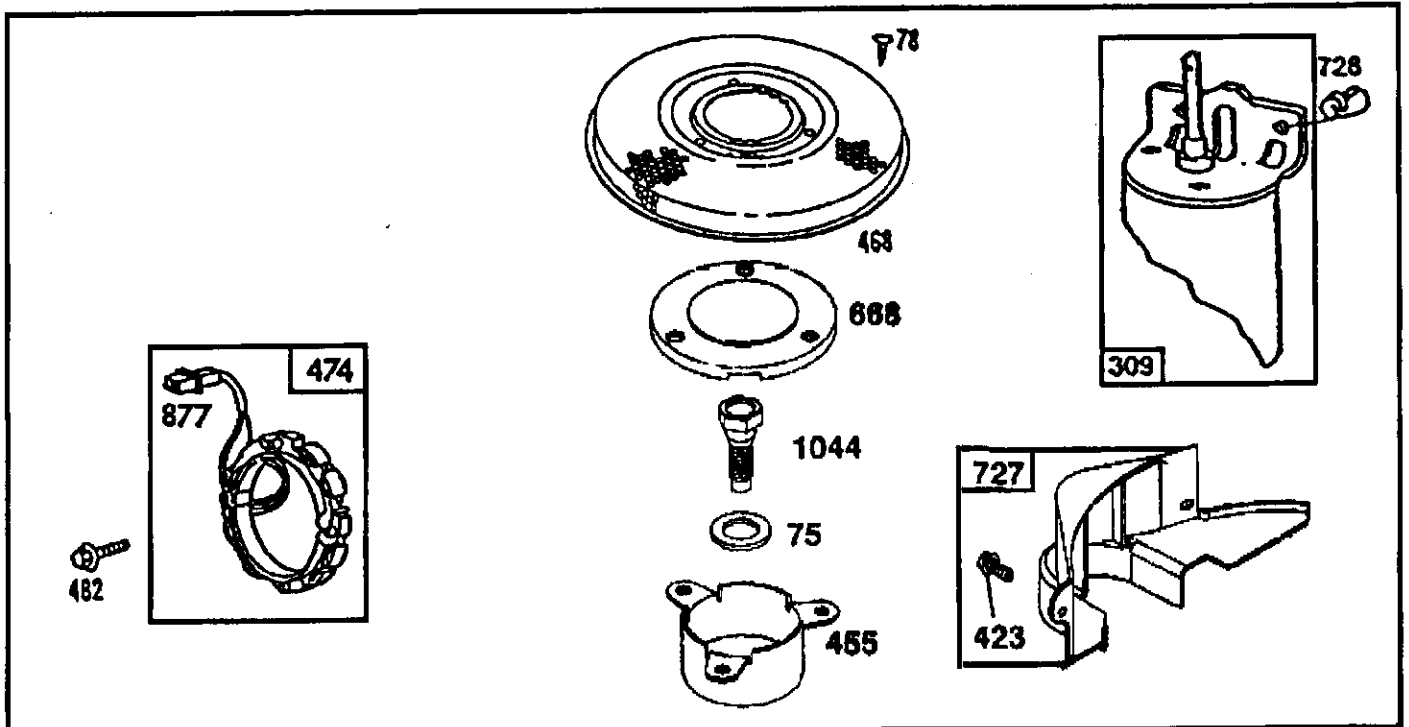
BRIGGS & STRATTON ENGINE - MODEL NUMBER 286707, TYPE NUMBER 0441-01



KEY NUMBER		309	310	311	510	544	801	802	803
MANUFACTURER		Motor and Drive Assy.	Thru Bolt Assembly	Brush Assembly	Drive Assembly	Armature Assembly	Drive End Cap Assembly	End Cap Assy. Commutator	Housing Assembly
Briggs & Stratton	Housing Length								
12V	3-21/32"	394805	94003	395538	490421**	390837	394856	395537*	398159

*Includes Brush Set

**Includes #398003 Clutch Assembly (Key Number 513)
 #280104 Gear (Key Number 783)
 #490467 Retainer and Pin (Key Number 876)
 #94288 Roll Pin (Key Number 896)



REPAIR PARTS

12.5 HP 42" TRACTOR - - MODEL NUMBER 917.255440

BRIGGS & STRATTON ENGINE - MODEL NUMBER 286707, TYPE NUMBER 0441-01

KEY PART NO. NO.	DESCRIPTION	KEY PART NO. NO.	DESCRIPTION
1 490450	Cylinder Assembly	45 262248	Tappet-Valve
2 399265	Bearing, Cylinder (Requires Special Tools For Installation)	46 212897	Gear, Cam
3 391086	* Seal, Oil	51 272465	*** Gasket, Carburetor (Carburetor to Elbow)
5 494240	Head, Cylinder	52 272554	* Gasket, Carburetor (Elbow to Cylinder)
7 271866	* Gasket, Cylinder Head	53 94637	Stud, Carburetor Mounting
8 391406	Breather Assembly	75 224061	Washer, Spring
9 27803	Gasket, Valve Cover	78 93805	Screw, Sems
10 94621	Screw, Sems	95 94098	** Screw, Throttle
11 280100	Tube, Breather	98 495800	Screw, Idle Speed
12 271916	* Gasket, Crankcase Cover 1/64"	104 231789	** Pin, Float Hinge
271997	* Gasket, Crankcase Cover .005"	105 231855	** Valve Assembly, Inlet Needle
271996	* Gasket, Crankcase Cover .009"	106 231854	Inlet Valve Seat
13 94622	Screw, Cylinder Head 3"	108 224540	Valve, Choke
15 94239	Plug, Oil Drain	118 494383	** Valve, Needle
16 495162	Crankshaft	121 495799	Carburetor Overhaul Kit (Includes Items marked ** and ***)
94196	Key, Timing Gear	123 94616	Screw, Elbow Mounting
18 494238	Base, Engine	125 495706	Carburetor Assembly
20 291675	* Seal, Oil	127 - - -	** Plug, Welch (Sold in Kit Only)
22 94624	Screw, Sems, Base Mounting	130 224539	Valve, Throttle
23 492326	Flywheel and Ring Gear Assembly, Magneto	131 494379	Shaft and Lever, Throttle
24 222698	Key, Flywheel	133 494381	Float, Carburetor
25 394661	Piston Assembly, Standard	137 281165	*** Gasket, Float Bowl
394662	Piston Assembly .010" Oversize	138 281164	*** Washer, Float Bowl Screw
394663	Piston Assembly .020" Oversize	141 494380	** Shaft and Lever, Choke
394664	Piston Assembly .030" Oversize	142 494537	** Nozzle/Jet, Carburetor
26 391780	Ring Set, Piston, Standard	494499	High Altitude Kit:
392331	Ring Set, Piston, Chrome, Standard	147 231794	231796 Pilot Jet, High Altitude
391781	Ring Set, Piston .010" Oversize	164 213819	281164 Seal, Bowl Screw
391782	Ring Set, Piston .020" Oversize	171 281051	** Pilot, Jet
391783	Ring Set, Piston .030" Oversize	187 393815	Carburetor, Elbow
27 260924	Lock, Piston Pin	188 93535	Nut, Air Cleaner Mounting
28 299691	Pin Assembly, Piston, Standard	201 262767	Line, Fuel, 11" (Cut To Suit)
391286	Pin Assembly, Piston .005" Over	209 260871	Screw, Sems 3/4"
29 490348	Rod Assembly, Connecting	216 262766	Link, Governor
490469	Rod Assembly, Connecting .020" Undersize Crankpin Bore	219 490815	Spring, Governor
31 222299	Lock, Connecting Rod Screw		Link, Choke
32 92909	Screw, Connecting Rod		Oil Slinger, Governor Gear and Bracket Assembly
33 262246	Valve, Exhaust		
34 262247	Valve, Intake		
35 65906	Spring, Intake Valve		
36 26828	Spring, Exhaust Valve		
37 224502	Guard, Flywheel		
40 221596	Retainer, Intake Valve		
41 292260	Rotocoil, Exhaust Valve		
42 93630	Retainer, Exhaust Valve Rotocoil		

* Included in Gasket Set (494241)

** Included in Carburetor Overhaul Kit (495799)

*** Included in both Carburetor Overhaul Kit (495799) and Carburetor Gasket Set (494385)

NOTE: All component dimensions given in U.S. inches
1 inch = 25.4 mm

REPAIR PARTS

12.5 HP 42" TRACTOR - - MODEL NUMBER 917.255440

BRIGGS & STRATTON ENGINE - MODEL NUMBER 286707, TYPE NUMBER 0441-01

KEY PART NO.	NO.	DESCRIPTION	KEY PART NO.	NO.	DESCRIPTION
222	494887	Plate, Governor Control (Choke-A-Matic)	615	93307	Retainer, E-Ring
224	94729	Screw, Sem, Air Cleaner	618	262803	Spring, Choke Return
308	491490	Cover, Cylinder Head	634	281168	** Seal, Choke Shaft
225	231058	Crank, Governor, 1/4" Diameter	634A	491323	* Seal, Governor
227	493935	Lever Assembly, Governor	634B	281167	Washer, Throttle Shaft
230	94742	Washer, Governor Crank, 1/4" I.D.	635	66538	Elbow, Spark Plug
232	262785	Spring, Governor Link	646	224546	Brace, Air Cleaner
240	394358	Filter, Fuel	657	93496	Screw, Sems
265	221535	Clamp, Casing	663	94620	Screw, Hex Head
284	94326	Screw, Air Cleaner	668	280848	Spacer
304	224504	Housing, Blower, Red	726	392134	Gear, Ring (Includes Mounting Parts)
305	94619	Screw, Sems, Blower Housing Mounting	727	490324	Cover, Starter (Includes Mounting Screws)
306	224545	Shield, Cylinder	728	94627	Screw, Sems
307	94623	Screw, Sems, Cylinder Shield Mtg.	729	281159	Clip, Lead Wire
309	---	Motor, Starting, 12 Volt (See Chart on Illustrated Pages for Replacement Parts)	741	262135	Gear, Timing
333	492341	Armature, Magneto	757	212359	Link, Counterweight
334	93381	Screw, Sems, Armature Mounting	758	399891	Counterweight Assembly
337	802592	Plug, Spark, (1-7/8" or 47 mm) (Resistor Type)	759	298909	Pin, Counterweight
346	93705	Screw, Hex Head	761	93875	Screw, Counterweight
356	494328	Wire, Ground	842	270920	Seal, Oil Filler Cap
358	494241	Gasket Set (Includes all items marked *)	847	490474	Fill Group, Oil
363	19203	Puller, Flywheel	851	221798	Terminal, Ignition Cable
383	89838	Wrench, Spark Plug	869	261463	Seat, Intake Valve, Standard
422	224390	Clamp, Oil Filler Tube	870	210940	Seat, Exhaust Valve, Standard
423	93984	Screw, Sems	871	261961	Guide, Exhaust Valve
445	493909	Cartridge, Air Cleaner	872	281104	Cover, Air Cleaner
455	222561	Cup, Screen Mounting	875	494237	Body, Air Cleaner
467	493903	Knob, Air Cleaner	877	393456	Diode and Connector Assembly, Dual Circuit
468	222562	Screen, Flush Rotating	955	94642	** Screw, Fuel Bowl
474	393474	Stator, Alternator, Dual Circuit	965	94108	Locknut, Air Cleaner Mounting
482	93621	Screw, Sems	975	494378	Bowl Assembly, Carburetor
523	495230	Cap and Dipstick, Oil Filler	977	494385	Carburetor Gasket Kit (Includes items marked ***)
524	68838	Seal, Filler Tube	987	281166	** Seal, Throttle Shaft
525	280741	Tube, Oil Filler	1005	280687	Fan, Flywheel
535	272403	Element, Air Cleaner	1006	224413	Retainer, Fan
537	281106	* O-Ring, Air Cleaner	1044	94673	Screw, Shoulder, Hex Head
552	231597	Bushing, Governor Crank, 1/4" I.D.			
562	92613	Bolt, Governor Lever			
592	231082	Nut, Hex #10-24			
601	93053	Clamp, Fuel Pipe			
611	494451	Fuel Inlet Tube			
614	93306	Cotter, Hair Pin			

* Included in Gasket Set (494241)
 ** Included in Carburetor Overhaul Kit (495799)
 *** Included in both Carburetor Overhaul Kit (495799) and Carburetor Gasket Set (494385)

NOTE: All component dimensions given in U.S. inches
 1 inch = 25.4 mm