

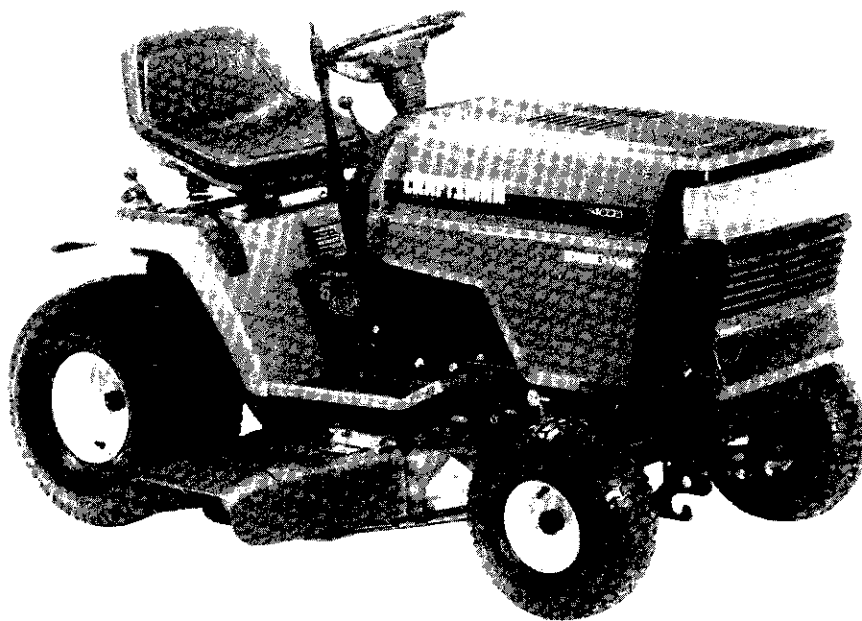
**SEARS**

**OWNER'S  
MANUAL**

**MODEL NO.  
917.255450**

**Caution:**  
Read and follow  
all Safety Rules  
and Instructions  
Before Operating  
This Equipment

**3One™**  
Convertible



**CRAFTSMAN®**

**14.0 HP**

**ELECTRIC START**

**3 in One Convertible**

**42" MOWER DECK**

**6 SPEED TRANSAXLE**

**LAWN TRACTOR**

- Assembly
- Operation
- Customer Responsibilities
- Service and Adjustments
- Repair Parts



# SAFETY RULES

## Safe Operation Practices for Ride-On Mowers



**IMPORTANT: THIS CUTTING MACHINE IS CAPABLE OF AMPUTATING HANDS AND FEET AND THROWING OBJECTS. FAILURE TO OBSERVE THE FOLLOWING SAFETY INSTRUCTIONS COULD RESULT IN SERIOUS INJURY OR DEATH.**

### I. GENERAL OPERATION

- Read, understand, and follow all instructions in the manual and on the machine before starting.
- Only allow responsible adults, who are familiar with the instructions, to operate the machine.
- Clear the area of objects such as rocks, toys, wire, etc., which could be picked up and thrown by the blade.
- Be sure the area is clear of other people before mowing. Stop machine if anyone enters the area.
- Never carry passengers.
- Do not mow in reverse unless absolutely necessary. Always look down and behind before and while backing.
- Be aware of the mower discharge direction and do not point it at anyone. Do not operate the mower without either the entire grass catcher or the guard in place.
- Slow down before turning.
- Never leave a running machine unattended. Always turn off blades, set parking brake, stop engine, and remove keys before dismounting.
- Turn off blades when not mowing.
- Stop engine before removing grass catcher or unclogging chute.
- Mow only in daylight or good artificial light.
- Do not operate the machine while under the influence of alcohol or drugs.
- Watch for traffic when operating near or crossing roadways.
- Use extra care when loading or unloading the machine into a trailer or truck.

### II. SLOPE OPERATION

Slopes are a major factor related to loss-of-control and tipover accidents, which can result in severe injury or death. All slopes require extra caution. If you cannot back up the slope or if you feel uneasy on it, do not mow it.

#### DO:

- Mow up and down slopes, not across.
- Remove obstacles such as rocks, tree limbs, etc.
- Watch for holes, ruts, or bumps. Uneven terrain could overturn the machine. *Tall grass can hide obstacles.*
- Use slow speed. Choose a low gear so that you will not have to stop or shift while on the slope.
- Follow the manufacturer's recommendations for wheel weights or counterweights to improve stability.
- Use extra care with grass catchers or other attachments. These can change the stability of the machine.
- Keep all movement on the slopes *slow* and *gradual*. Do not make sudden changes in speed or direction.
- Avoid starting or stopping on a slope. If tires lose traction, disengage the blades and proceed slowly *straight* down the slope.

#### DO NOT:

- *Do not* turn on slopes unless necessary, and then, turn slowly and gradually downhill, if possible.
- *Do not* mow near drop-offs, ditches, or embankments. The mower could suddenly turn over if a wheel is over the edge of a cliff or ditch, or if an edge caves in.
- *Do not* mow on wet grass. Reduced traction could cause sliding.
- *Do not* try to stabilize the machine by putting your foot on the ground.
- *Do not* use grass catcher on steep slopes.

### III. CHILDREN

Tragic accidents can occur if the operator is not alert to the presence of children. Children are often attracted to the machine and the mowing activity. *Never* assume that children will remain where you last saw them.

- Keep children out of the mowing area and under the watchful care of another responsible adult.
- Be alert and turn machine off if children enter the area.
- Before and when backing, look behind and *down* for small children.
- Never carry children. They may fall off and be seriously injured or interfere with safe machine operation.
- Never allow children to operate the machine.
- Use extra care when approaching blind corners, shrubs, trees, or other objects that may obscure vision.

### IV. SERVICE

- Use extra care in handling gasoline and other fuels. They are flammable and vapors are explosive.
  - Use only an approved container.
  - Never remove gas cap or add fuel with the engine running. Allow engine to cool before refueling. Do not smoke.
  - Never refuel the machine indoors.
  - Never store the machine or fuel container inside where there is an open flame, such as a water heater.
- Never run a machine inside a closed area.
- Keep nuts and bolts, especially blade attachment bolts, tight and keep equipment in good condition.
- Never tamper with safety devices. Check their proper operation regularly.
- Keep machine free of grass, leaves, or other debris build-up. Clean oil or fuel spillage. Allow machine to cool before storing.
- Stop and inspect the equipment if you strike an object. Repair, if necessary, before restarting.
- Never make adjustments or repairs with the engine running.
- Grass catcher components are subject to wear, damage, and deterioration, which could expose moving parts or allow objects to be thrown. Frequently check components and replace with manufacturer's recommended parts, when necessary.
- Mower blades are sharp and can cut. Wrap the blade(s) or wear gloves, and use extra caution when servicing them.
- Check brake operation frequently. Adjust and service as required.



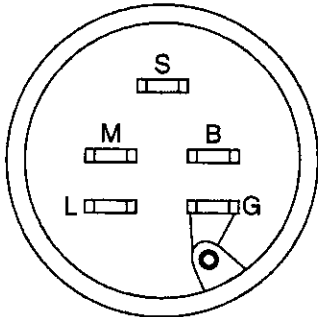
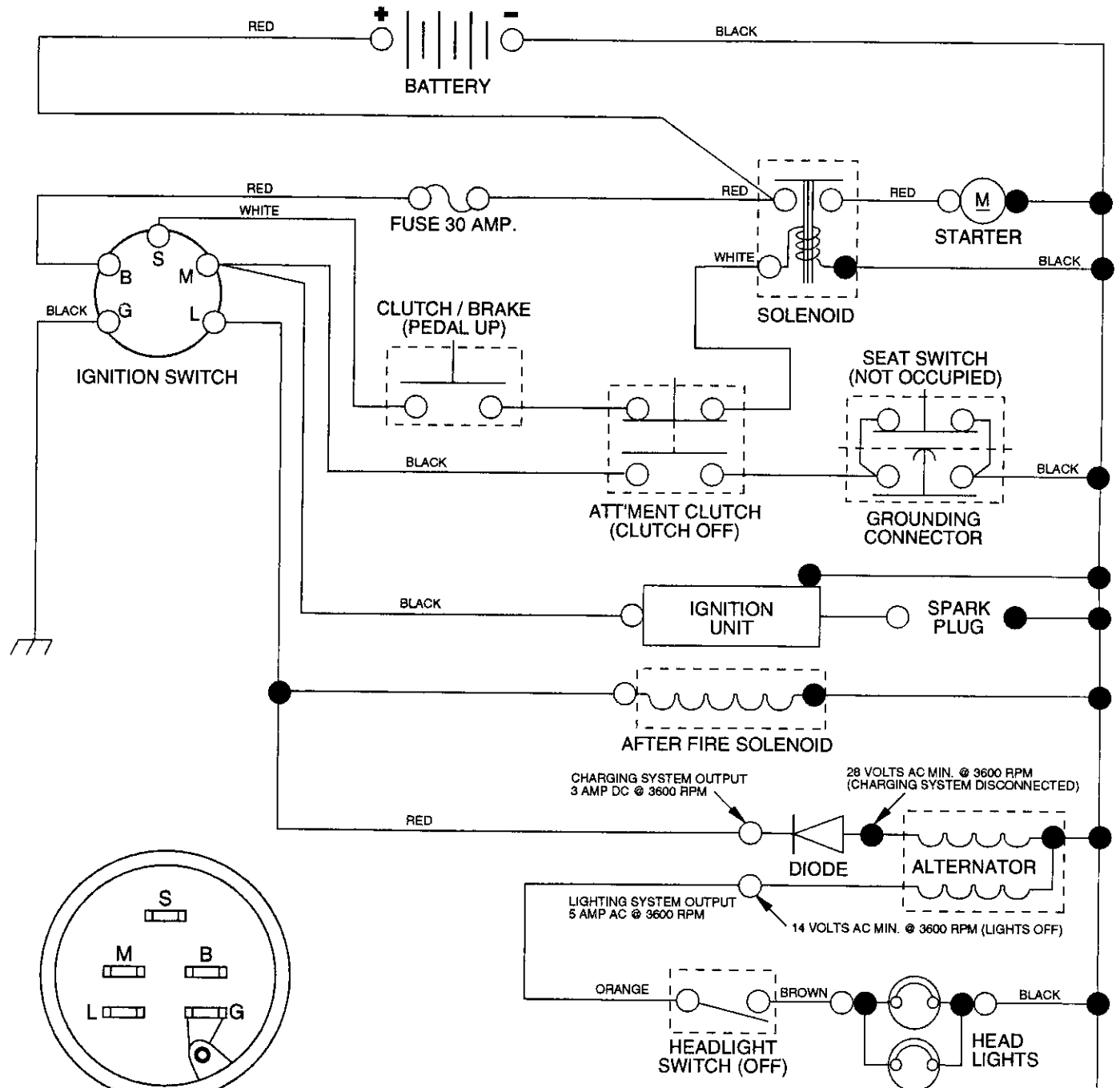
**Look for this symbol to point out important safety precautions. It means CAUTION!!! BECOME ALERT!!! YOUR SAFETY IS INVOLVED.**



**CAUTION: Always disconnect spark plug wire and place wire where it cannot contact spark plug in order to prevent accidental starting when setting up, transporting, adjusting or making repairs.**

# 14 HP 42" TRACTOR - - MODEL NUMBER 917.255450

## SCHEMATIC



IGNITION SWITCH

POSITION	CIRCUIT
OFF	M + G
ON	B + L
START	B + S + L

### WIRING INSULATED CLIPS

**NOTE:** IF WIRING INSULATED CLIPS WERE REMOVED FOR SERVICING OF UNIT, THEY SHOULD BE REPLACED TO PROPERLY SECURE YOUR WIRING

### NOTE

YOUR TRACTOR IS EQUIPPED WITH A SPECIAL ALTERNATOR SYSTEM. THE LIGHTS ARE NOT CONNECTED TO THE BATTERY, BUT HAVE THEIR OWN ELECTRICAL SOURCE. BECAUSE OF THIS, THE BRIGHTNESS OF THE LIGHTS WILL CHANGE WITH ENGINE SPEED. AT IDLE THE LIGHTS WILL DIM. AS THE ENGINE IS SPEEDED UP, THE LIGHTS WILL BECOME THEIR BRIGHTEST.

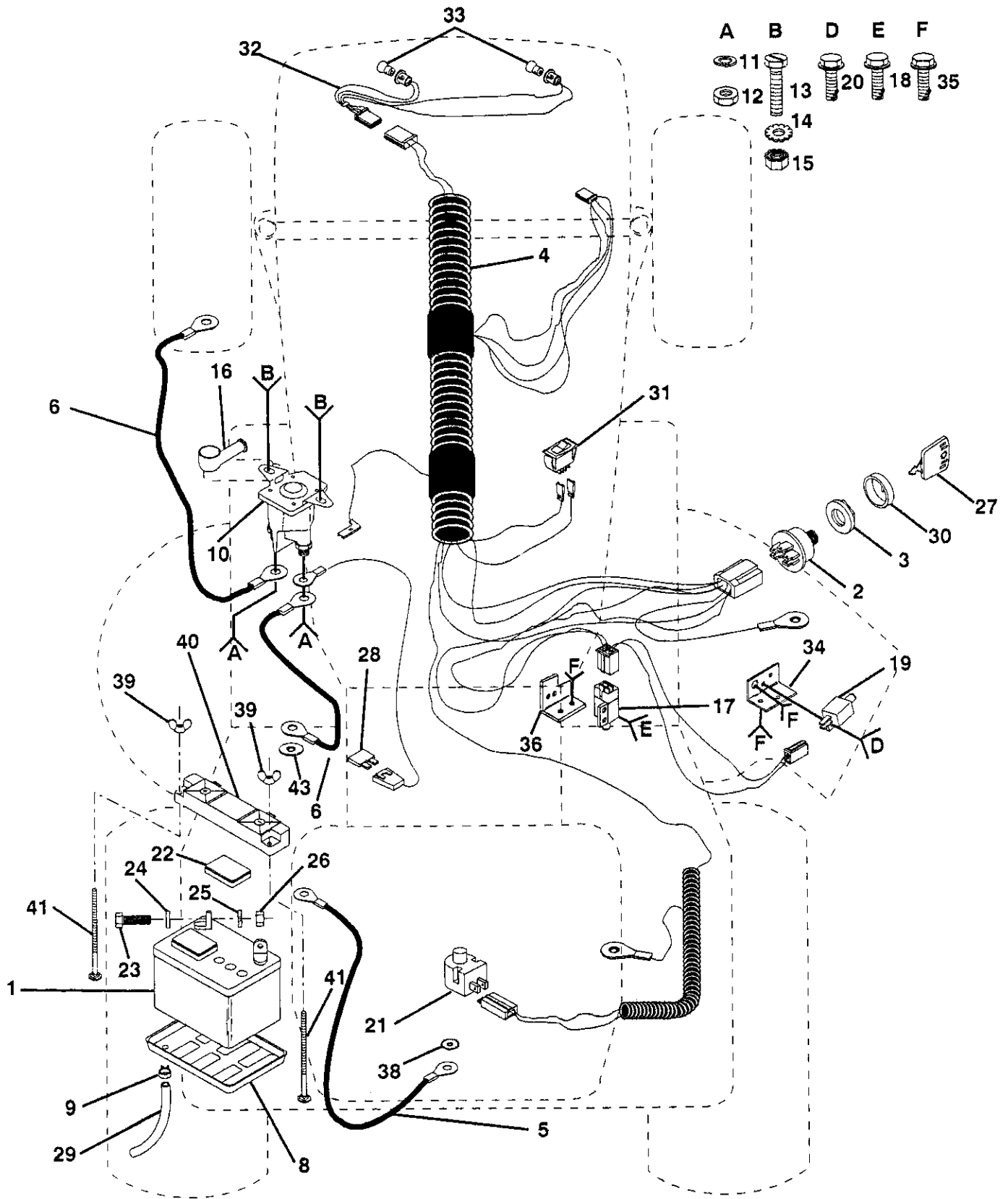
● NON-REMOVABLE CONNECTIONS

○ REMOVABLE CONNECTIONS

# REPAIR PARTS

14 HP 42" TRACTOR - - MODEL NUMBER 917.255450

## ELECTRICAL



# REPAIR PARTS

14 HP 42" TRACTOR - - MODEL NUMBER 917.255450

## ELECTRICAL

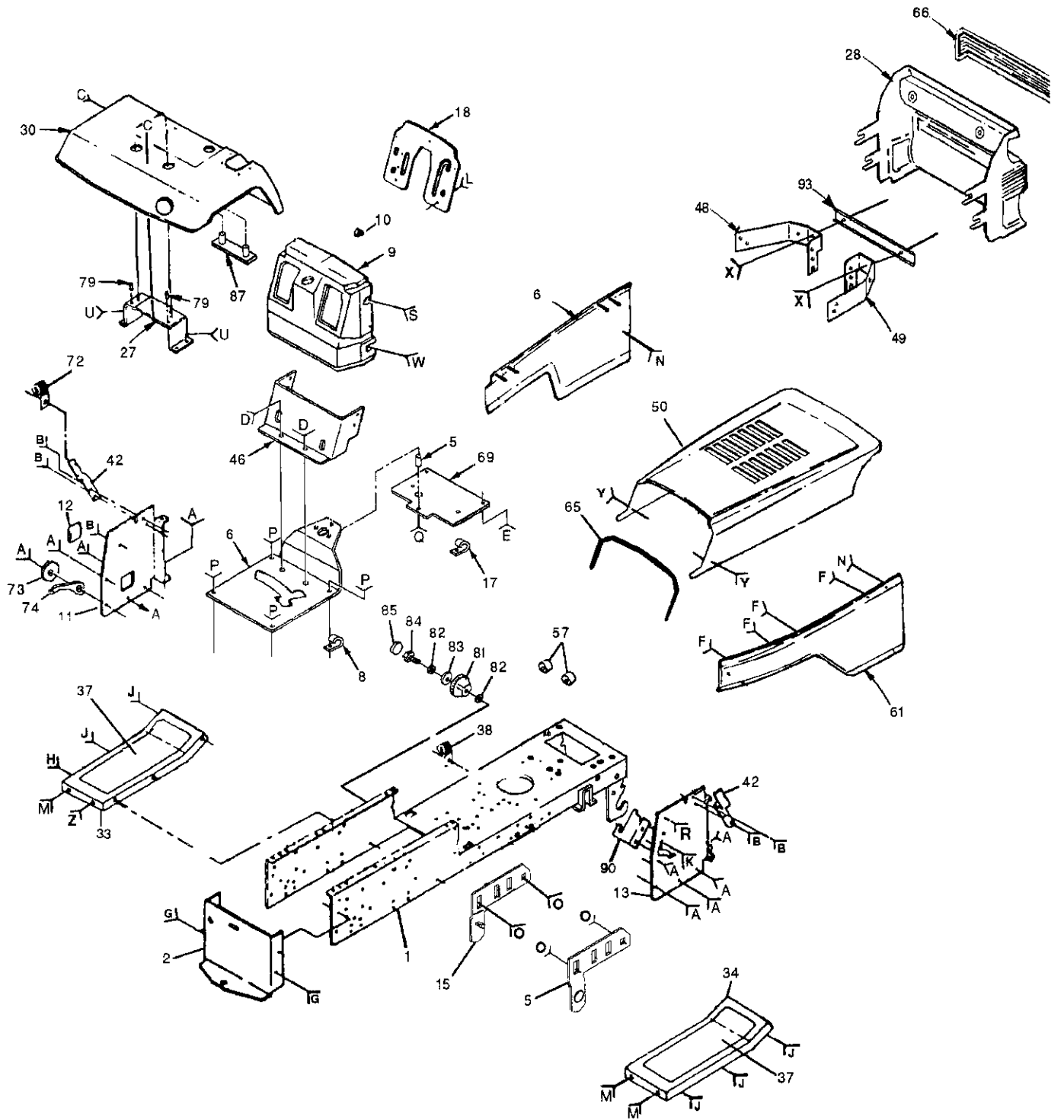
KEY PART NO. NO.	DESCRIPTION	KEY PART NO. NO.	DESCRIPTION		
1	121537X	Battery	23	74760412	Bolt, Hex 1/4-20 UNC x 3/4
2	102972X	Switch, Ignition	24	STD551025	Washer
3	124211X	Nut, Ignition	25	STD551125	Washer
4	138007	Harness, Ignition	26	STD541025	Nut
5	4207J	Cable, Ground	27	109310X	Key, Ignition
6	4206J	Cable, Battery	28	108824X	Fuse
8	7603J	Tray, Battery	29	100541K	Tube, Plastic
9	109596X	Clamp, Hose	30	123620X	Cover, Key Switch
10	109081X	Solenoid	31	110712X	Switch, Light
11	STD551125	Washer, Lock	32	136850	Harness, Light Socket
12	73350400	Nut, Hex, Jam 1/4-20 UNC	33	4152J	Bulb, Light
13	74780408	Bolt, Hex, Fin. 1/4-20 UNC x 1/2 Grade 5	34	108236X	Bracket, Switch
14	STD551225	Washer	35	STD601005	Screw
15	STD541425	Nut	36	130890	Bracket, Switch
16	131563	Cover, Terminal	38	STD551237	Washer
17	109553X	Switch, Interlock	39	123198X	Nut, Plastic, Wing 1/4-20
18	STD601005	Screw	40	102476X	Guard, Terminal
19	104445X	Switch, Interlock	41	STD532575	Bolt
20	STD601005	Screw	43	11150400	Washer Lock Int. Tooth 1/4
21	121305X	Switch, Plunger			
22	121264X	Cap, Battery			

**NOTE:** All component dimensions given in U.S. inches  
1 inch = 25.4 mm

# REPAIR PARTS

14 HP 42" TRACTOR - - MODEL NUMBER 917.255450

## CHASSIS AND ENCLOSURES



A	B	C	D	E	F	G	H	J	K	L	M	N	O	P	Q	R	S	T	U	V	W	X	Y	Z

# REPAIR PARTS

## 14 HP 42" TRACTOR - - MODEL NUMBER 917.255450

### CHASSIS AND ENCLOSURES

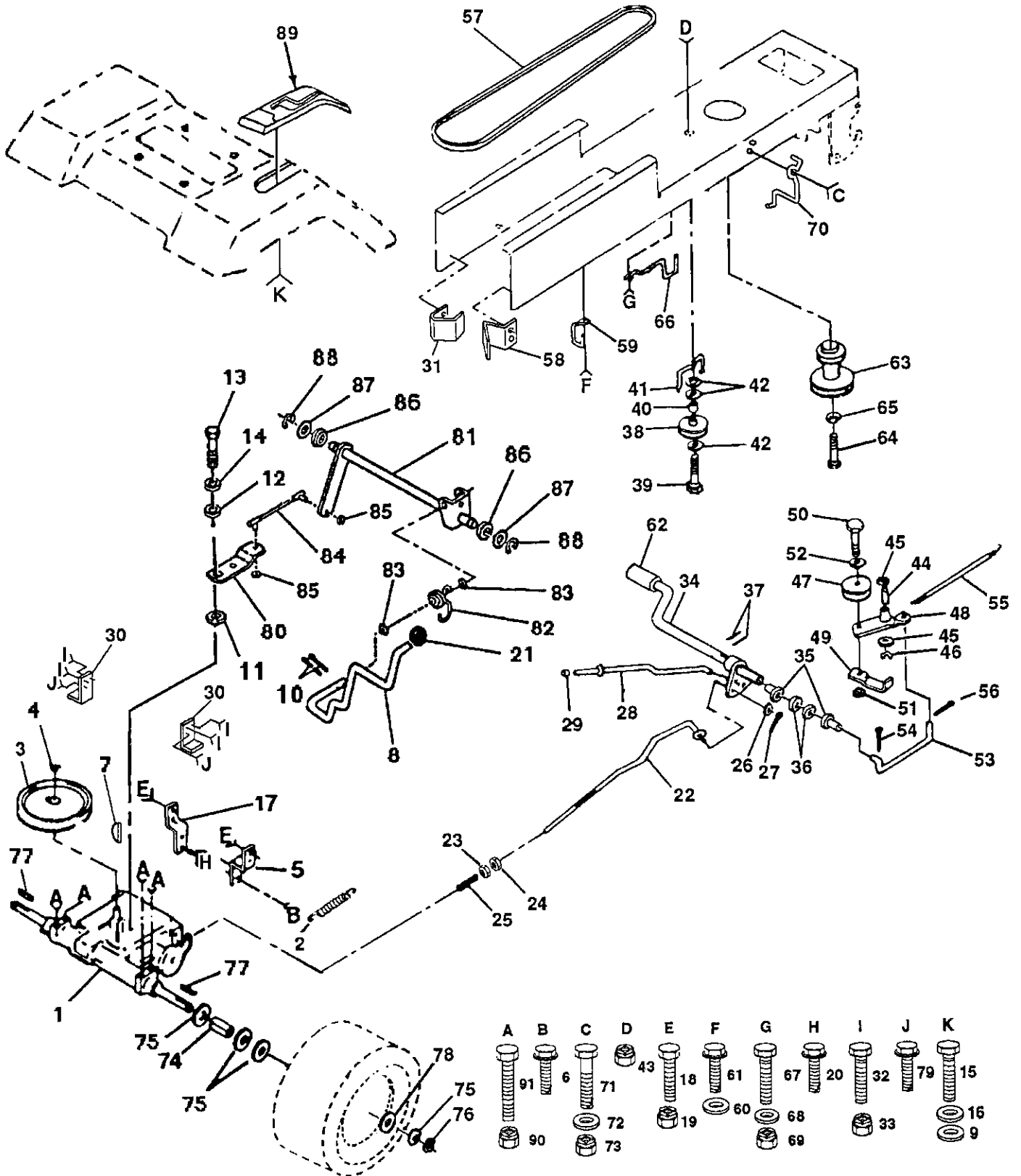
KEY PART NO. NO.	DESCRIPTION	KEY PART NO. NO.	DESCRIPTION
1	135034 Chassis	46	105518X Dash, Lower
2	137275 Drawbar	47	17490608 Screw, Thd., Roll. 3/8-16 x 1/2 Type TT
3	17490612 Screw, Thd., Roll. 3/8-16 x 3/4 Type TT	48	136814 Bracket Assembly, Front Pivot Hinge, LH
4	72140606 Bolt, Carriage 3/8-16 x 3/4	49	136813 Bracket Assembly, Front Pivot Hinge, RH
5	134775 Bracket Assembly, Pivot, RH	50	136673X459 Hood Assembly
6	123783X016 Saddle, Silkscreened	52	19131416 Washer 13/32 x 7/8 x 16 Gauge
7	17490608 Screw, Thd., Roll. 3/8-16 x 1/2 Type TT	53	121236X Spacer, Split
8	2751R Clip, Fuel Line	54	108067X Nut, Pal
9	136696 Dash, Plastic	57	110436X Bushing, Snap, Split
10	5479J Plug, Button	59	STD541037 Nut
11	136967 Panel, Dash, LH	60	STD523727 Bolt
12	121794X Cover, Access	61	136670X459 Panel Assembly, RH
13	136970 Panel, Dash, RH	62	136671X459 Panel Assembly, LH
14	17490612 Screw, Thd., Roll. 3/8-16 x 3/4 Type TT	63	STD523707 Bolt
15	134774 Bracket Assembly, Pivot, LH	64	10040400 Washer, Lock
16	STD523710 Bolt	65	137304 Rod, Support Hood
17	2751R Clip, Fuel Line	66	136374 Lens, Bar, Clear
18	129621X013 Plate, Dash	67	137270 Rivet, Ratchet, Male
19	74180412 Screw, Machine 1/4-20 x 3/4	68	137271 Rivet, Ratchet, Female
20	STD551025 Washer 17/64	69	128231 Plate, Support, Battery
21	STD541425 Nut	70	137269 Washer, Nylon
22	74180512 Screw, Machine, Truss Head 5/16-18 UNC x 3/4	72	5320R Clip, Insulated
23	73680500 Nut, Crownlock 5/16-18	73	120529X Washer, Nylon .44 x .75 x .032
24	STD523707 Bolt	74	123933X394 Pointer, Height Indicator
25	19131312 Washer 13/32 x 13/16 x 12 Gauge	75	108067X Nut, Pal
26	STD541437 Nut	76	19092016 Washer 9/32 x 1-1/4 x 16 Ga.
27	105509X Bracket Assembly, Fender	77	74760412 Bolt Hex 1/4 - 20 x 3/4
28	136373X428 Grill	78	108067X Nut, Pal
29	STD541431 Nut, Crownlock 5/16-18	79	105531X Nut, Push, Nylon
30	123784X459 Fender	80	17490612 Screw, Thd. Roll. 3/8-16 x 3/4 Type TT
31	73680600 Nut, Crownlock	81	123934X Scale, Height Indicator
32	STD523120 Bolt, Hex 5/16-18 x 2	82	19112410 Washer 11/32 x 1-1/2 x 10 Gauge
33	105465X459 Footrest, LH	83	STD551131 Washer, Lock
34	105464X459 Footrest, RH	84	74780516 Bolt, Hex, Fin. 5/16-18 UNC x 1
35	STD533707 Bolt	85	120579X Nut, Pal
36	STD541437 Nut	86	123935X Plug, Hole
37	105466X Pad, Footrest	87	105511X Fender Strap
38	2751R Clip, Fuel Line	88	73800600 Locknut 3/8 - 16 UNC
39	STD551237 Washer	90	110923X Bracket, Mower Clutch
40	STD541437 Nut	91	STD533710 Bolt
42	138193 Bracket, Support, Dash	92	74760614 Bolt, Hex 3/8 - 16 x 7/8
43	STD523707 Bolt		
44	STD523710 Bolt		
45	STD541437 Nut		

**NOTE:** All component dimensions given in U.S. inches  
1 inch = 25.4 mm

# REPAIR PARTS

14 HP 42" TRACTOR - - MODEL NUMBER 917.255450

## DRIVE





# REPAIR PARTS

## 14 HP 42" TRACTOR - - MODEL NUMBER 917.255450

### DRIVE

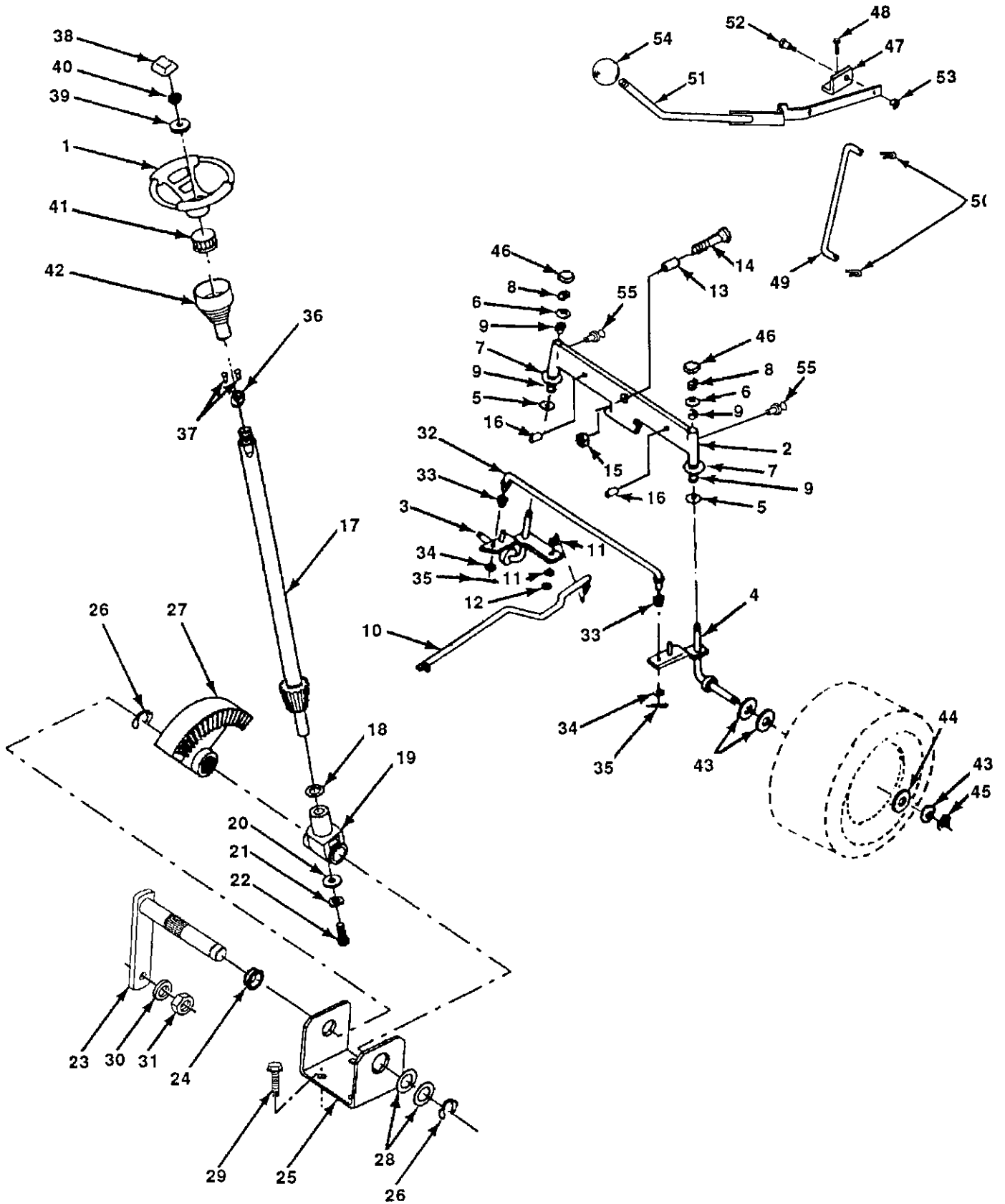
KEY PART NO. NO.	DESCRIPTION	KEY PART NO. NO.	DESCRIPTION	
1	137370	48	123789X	Bellcrank Assembly
2	110422X	49	123205X	Retainer, Belt
3	123667X	50	STD523715	Bolt
4	12000028	51	STD541437	Nut
5	121520X	52	STD551037	Washer
6	17490512	53	105710X	Link, Clutch
		54	STD561210	Pin
7	2228M	55	105709X	Spring, Return, Clutch
8	127288X	56	STD561210	Pin
9	19060718	57	131006	V-Belt, Ground Drive
10	STD561210	58	127290	Keeper, Belt, RH
11	105701X	59	136715	Keeper, Chassis, Center Span Belt
12	19151216	60	19131312	Washer 13/32 x 13/16 x 12 Gauge
13	71040412	61	17490612	Screw, Thd., Roll. 3/8-16 x 3/4 Type TT
		62	8883R	Cover, Pedal, Round
14	STD551125	63	134825	Pulley, Engine
15	74640808	64	M010110100	Bolt, Hex M10-1.5 x 100
16	10100800	65	STD551143	Washer
17	121520X	66	129921	Keeper, Belt, Engine, LH
18	STD523707	67	STD523710	Bolt
19	STD541437	68	19131312	Washer 13/32 x 13/16 x 12 Gauge
20	17490512	69	STD541437	Nut
		70	134683	Guide, Mower Drive Belt, RH
21	106933X	71	STD523710	Bolt
22	130804	72	19132012	Washer 13/32 x 1-1/4 x 12 Gauge
23	STD541437	73	STD541437	Nut
24	STD541237	74	109502X	Spacer, Split
25	106888X	75	121749X	Washer 25/32 x 1-1/4 x 16 Gauge
26	STD551037	76	STD581075	E-Ring
27	STD561210	77	123583X	Key, Square 2.0 x .1845/.1865
28	133261	78	121748X	Washer 25/32 x 1-5/8 x 16 Gauge
29	124236X	79	17490612	Screw, Thd., Roll. 3/8-16 x 3/4 Type TT
30	130807			Arm, Shift, Transaxle
31	127289	80	131487	Shaft Assembly, Shifter
32	STD523107	81	136933	Spring, Torsion, Transaxle
33	STD541431	82	123782X	Washer 17/32 x 3/4 x 16 Gauge
34	122424X	83	19171216	Tie Rod
35	120183X	84	132183	Nut, Nylock 1/4-28
36	STD551062	85	73530400	Bushing, Pivot
37	STD571810	86	71208	Washer
38	123674X	87	19212016	E-Ring
39	STD523727	88	12000008	Console, Shifter, 6 Speed
40	4470J	89	127287X	Nut
41	109070X	90	STD541431	Bolt, Hex, Fin. 5/16-18 UNC x 2-1/2
42	19131312	91	74760540	
43	STD541437			
44	105706X			
45	110812X			
46	12000039			
47	127783			

**NOTE:** All component dimensions given in U.S. inches  
1 inch = 25.4 mm

# REPAIR PARTS

14 HP 42" TRACTOR - - MODEL NUMBER 917.255450

## STEERING ASSEMBLY



# REPAIR PARTS

## 14 HP 42" TRACTOR - - MODEL NUMBER 917.255450

### STEERING ASSEMBLY

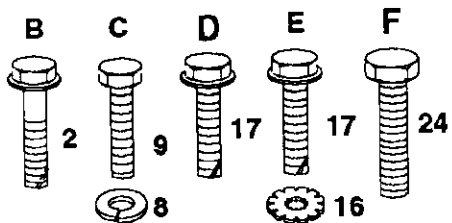
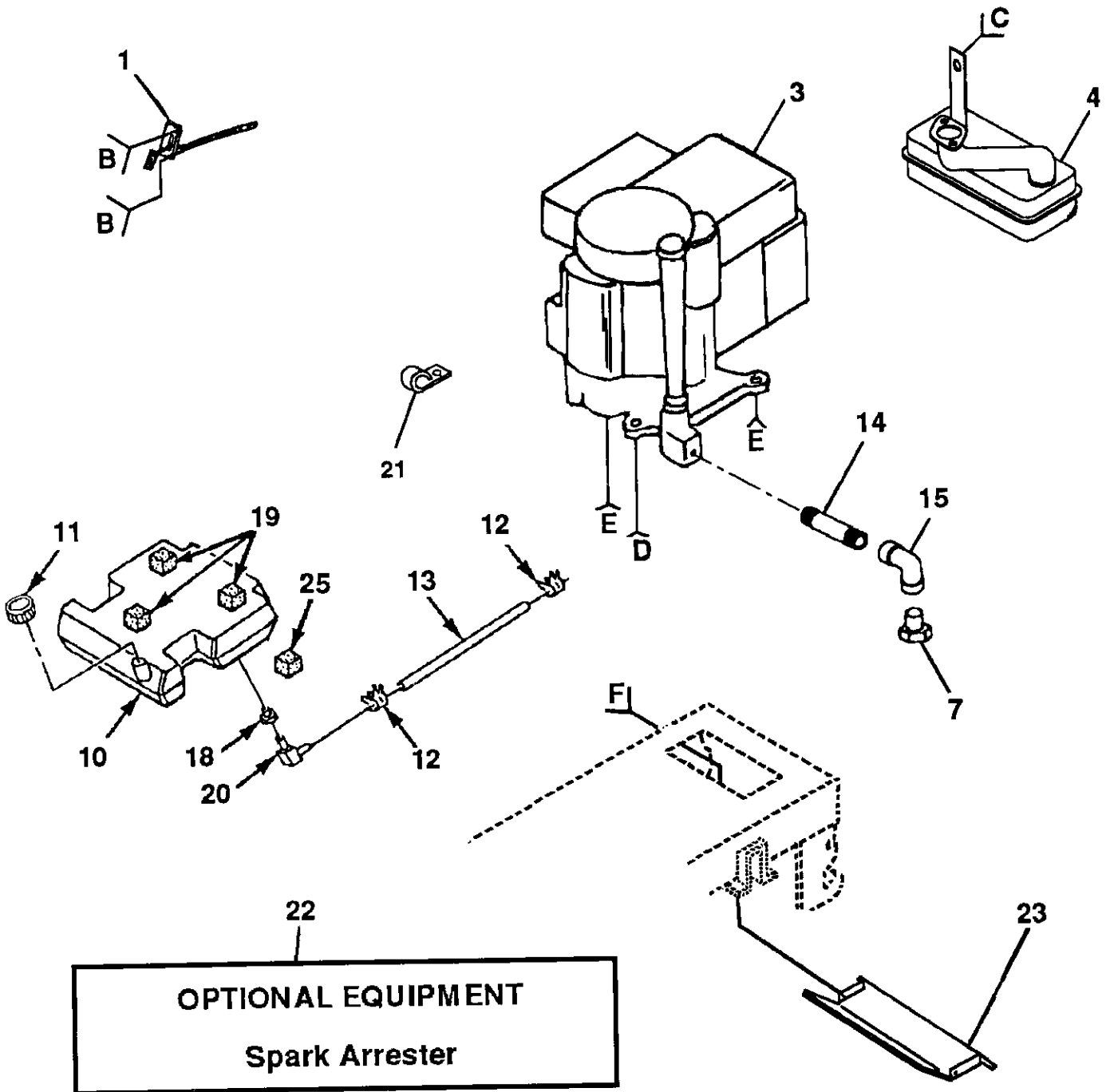
KEY PART NO. NO.	DESCRIPTION	KEY PART NO. NO.	DESCRIPTION
1 121472X	Steering Wheel	29 17490612	Screw, Thd., Roll. 3/8-16 x 3/4 Type TT
2 133988	Axle Assembly, Front	30 STD551137	Washer, Lock
3 135227	Spindle Assembly, LH	31 73610600	Nut, Hex, Fin. 3/8-24 UNF
4 135228	Spindle Assembly, RH	32 130465	Tie Rod
5 6266H	Bearing, Race, Thrust, Hardened	33 126847X	Bushing, Link, Drag
6 121748X	Washer 25/32 x 1-5/8 x 16 Gauge	34 19131416	Washer 13/32 x 7/8 x 16 Gauge
7 19272016	Washer 27/32 x 1-1/4 x 16 Gauge	35 STD561210	Pin
8 12000029	Ring, Klip	36 1554J	Bushing, Steering
9 3366R	Bearing	37 STD611005	Screw #10 - 16 x 1/2
10 130468	Link, Drag	38 126805X	Insert, Cap, Steering Wheel
11 STD551137	Washer, Lock	39 100712K	Washer .53 x 2.25 x .160
12 73610600	Nut, Hex, Fin. 3/8-24 UNF	40 STD541350	Nut
13 110438X	Spacer, Bearing, Front Axle	41 100711L	Adapter, Steering Wheel
14 74011056	Bolt, Hex 5/8-11 UNC x 3-1/2	42 110709X	Column, Steering
15 73901000	Locknut, Hex, Jam, with Washer Insert 5/8-11 UNC	43 121749X	Washer 25/32 x 1-1/4 x 16 Gauge
16 132624	Pin, Axle, Large 5/8 x 1.55/1.54	44 121748X	Washer 25/32 x 1-5/8 x 16 Gauge
17 128755	Shaft Assembly, Steering	45 12000029	Ring, Klip
18 57079	Washer, Thrust .515 x .750 x .033	46 121232X	Cap, Spindle
19 124035X	Support, Shaft	47 131672	Bracket, Pivot, Manual Clutch Lever
20 126684X	Washer, Shim 1/4 x 5/8 x .062	48 17490512	Screw, Thd. Roll. 5/16 - 18 x 3/4
21 STD551125	Washer	49 131291	Link, Clutch, with Nibs
22 71070410	Screw, Hex Socket Head 1/4-20 x 5/8	50 STD561210	Pin
23 127501	Shaft Assembly, Pittman	51 125916X	Lever Assembly, Mower Clutch
24 109816X	Nyliner, Snap-In	52 106451X	Bolt, Shoulder 3/8-16 UNC Grade 2
25 124036X	Bracket, Steering	53 STD541437	Nut
26 12000029	Ring, Klip	54 106933X	Knob, Round
27 136874	Gear, Sector	55 6855M	Fitting, Grease
28 6266H	Bearing, Race, Thrust, Hardened		

**NOTE:** All component dimensions given in U.S. inches  
1 inch = 25.4 mm

# REPAIR PARTS

14 HP 42" TRACTOR - - MODEL NUMBER 917.255450

## ENGINE



# REPAIR PARTS

## 14 HP 42" TRACTOR - - MODEL NUMBER 917.255450

### ENGINE

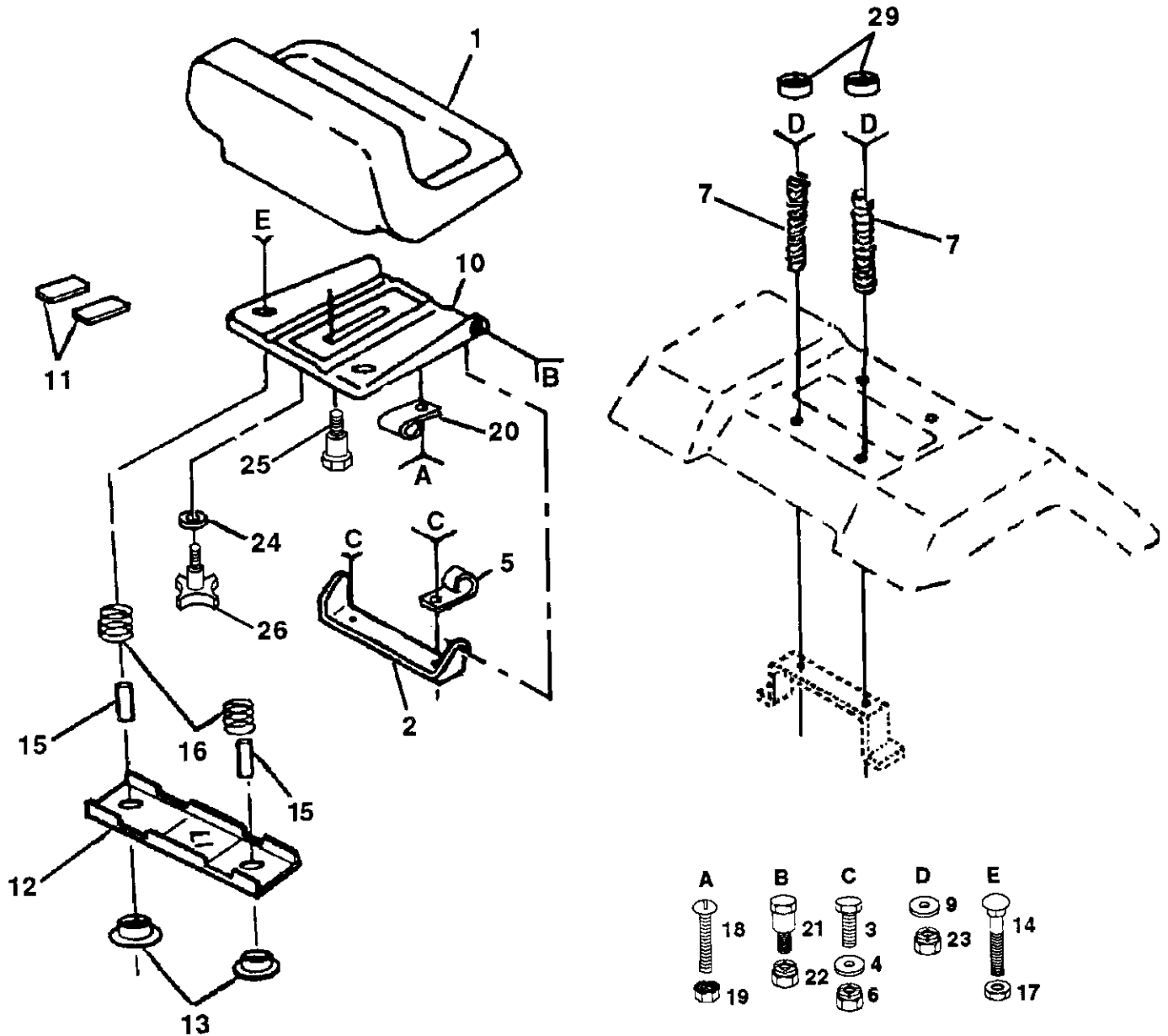
KEY PART NO.	NO.	DESCRIPTION
1	134265	Control, Throttle
2	17720410	Screw, Hex Head, Thread Cutting 1/4-20 x 5/8
3	137511	Engine, Kohler, 14 HP, Model No. CV14S, Type No. PS1451
4	137350	Muffler, Exhaust
7	---	Plug, Oil Drain (Order From Engine Manufacturer)
8	STD551131	Washer, Lock
9	STD523105	Bolt
10	127334X	Tank, Fuel
11	123549X	Cap Assembly, Fuel
12	123487X	Clamp, Hose
13	8543R	Line, Fuel
14	13280328	Nipple, Pipe
15	13200300	Elbow, Standard 90°, 3/8-18 NPT
16	STD551231	Washer
17	M740108025	Hex Bolt
18	3645J	Bushing
19	106082X	Spacer, Pad
20	8710J	Stern, Fuel Tank
21	2751R	Clip, Fuel Line
22	137180	Arrester, Spark
23	128953	Shield, Heat
24	STD601005	Screw
25	109227X	Spacer Pad

**NOTE:** All component dimensions given in U.S. inches  
1 inch = 25.4 mm

# REPAIR PARTS

14 HP 42" TRACTOR -- MODEL NUMBER 917.255450

## SEAT ASSEMBLY



### KEY PART NO. NO.

### DESCRIPTION

1	127438X	Seat
2	126656X	Bracket, Pivot, Seat
3	STD523707	Bolt
4	19131210	Washer 13/32 x 3/4 x 10 Gauge
5	2751R	Clip, Fuel Line
6	STD541437	Nut
7	124181X	Spring, Seat
9	19131614	Washer 13/32 x 1 x 14 Gauge
10	131451	Pan, Seat
11	121251X	Strip, Foam
12	121246X	Bracket, Switch Mounting
13	121248X	Bushing, Snap, Nylon
14	72050411	Bolt, Carriage 1/4-20 x 1-3/8
15	134300	Spacer, Split

### KEY PART NO. NO.

### DESCRIPTION

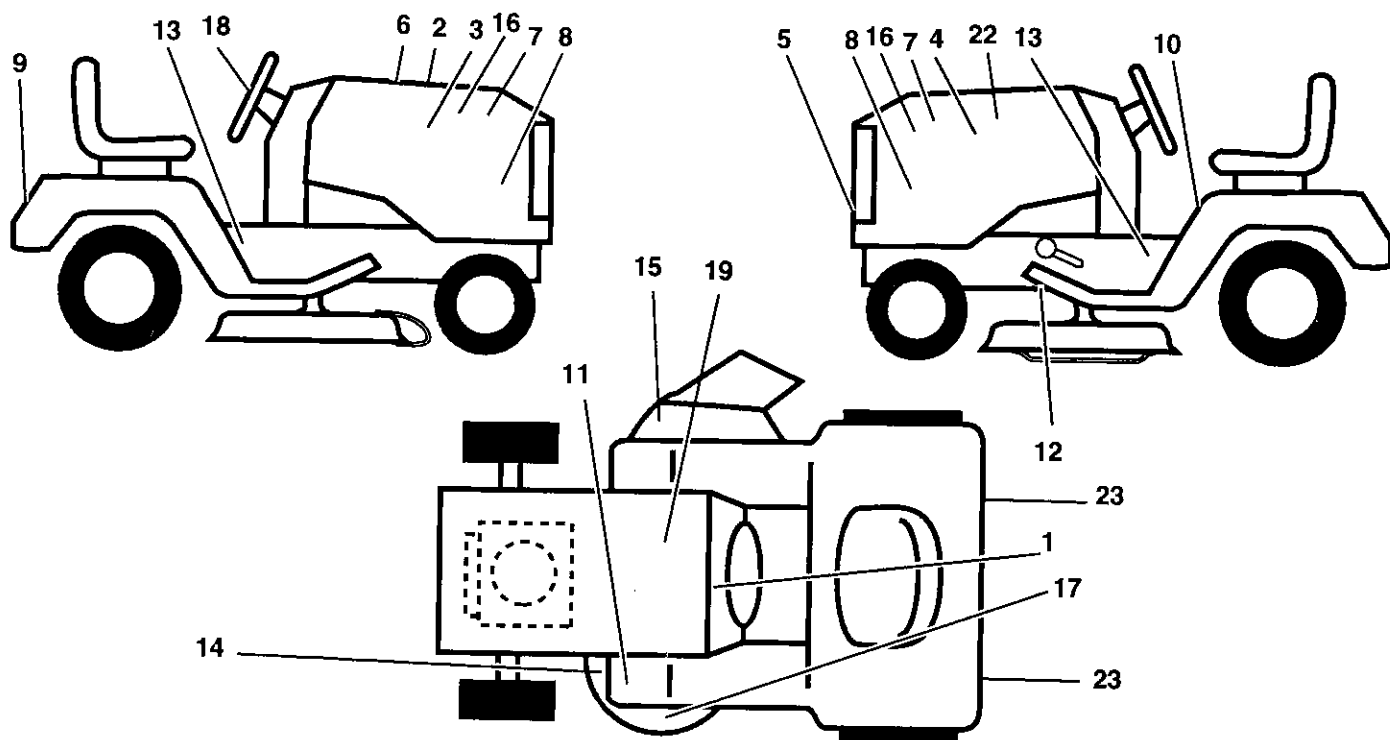
16	121250X	Spring
17	123976X	Nut, Flangelock 1/4 Grade 5
18	STD511005	Screw
19	73951000	Nut, Keps #10-32 UNF
20	4171R	Clip, Insulated
21	105529X	Bolt, Shoulder 5/16-18 UNC
22	STD541431	Nut
23	STD541437	Nut
24	19171912	Washer 17/32 x 1-3/16 x 12 Gauge
25	127018X	Bolt, Shoulder 5/16-18 x .62
26	120068X	Knob, Seat
29	124238X	Cap, Spring, Seat

NOTE: All component dimensions given in U.S. inches  
1 inch = 25.4 mm

# REPAIR PARTS

14 HP 42" TRACTOR - - MODEL NUMBER 917.255450

## DECALS



### KEY PART NO. NO.

### DESCRIPTION

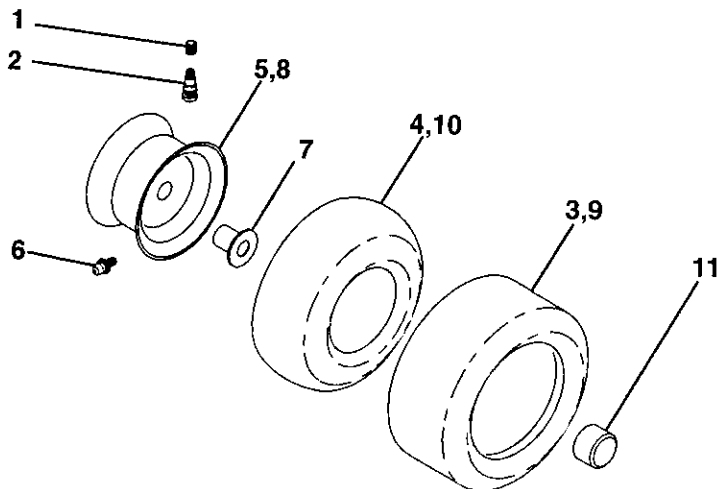
1	136794	Decal, Operating Instruction
2	133178	Decal, Mower, 3 In One
3	138042	Decal, Hood, Craftsman, RH
4	138043	Decal, Hood, Craftsman, LH
5	138046	Decal, Grille, Craftsman
6	133644	Decal, Maintenance
7	138048	Decal, Side Panel
8	133204	Decal, Side Panel
9	128314	Decal, Fender, Craftsman
10	137537	Decal, Caution
11	4900J	Decal, Clutch/Brake
12	109199X	Decal, V-Belt Drive Schematic

### KEY PART NO. NO.

### DESCRIPTION

13	131473	Decal, Chassis, 6 Speed/42"
14	136832	Decal, V-Belt Schematic
15	121343X	Decal, Danger
16	108631X	Decal II
17	133179	Decal, Mower QC System
18	132266	Decal, Insert Strg
19	120960X	Decal, Battery
23	106202X	Reflector, Taillight
--	137784	Manual, Owner's (Eng)

## WHEELS & TIRES



### KEY PART NO. NO.

### DESCRIPTION

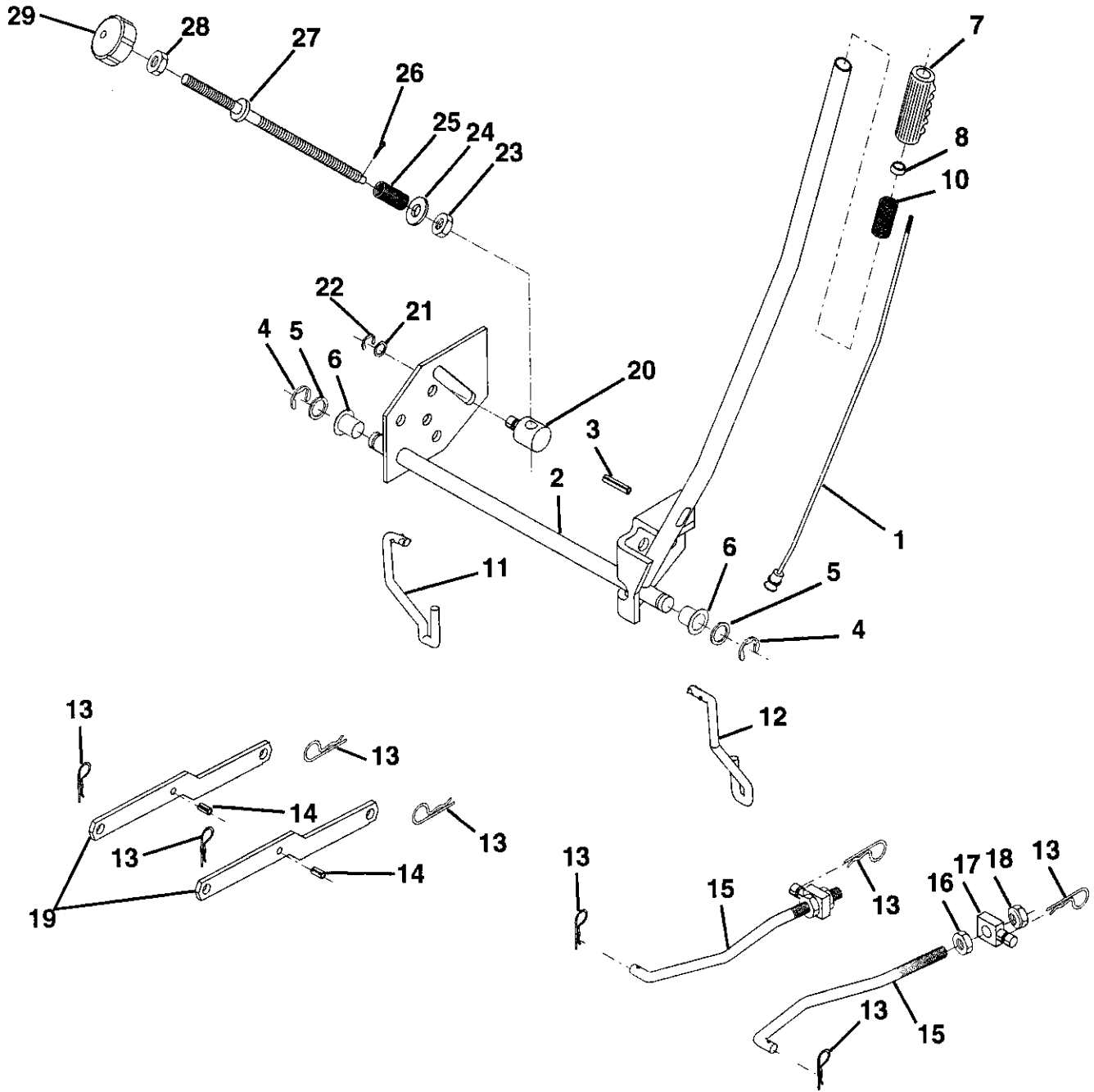
1	59192	Cap, Valve, Tire
2	65139	Stem, Valve
3	106222X	Tire, Front
4	59904	Tube, Front (Service Item Only)
5	106732X311	Rim Assembly, Front
6	278H	Fitting, Grease (Front Wheel Only)
7	9040H	Bearing, Flange (Front Wheel Only)
8	106108X311	Rim Assembly, Rear
9	122082X	Tire, Rear
10	7152J	Tube, Rear (Service Item Only)
11	104757X	Cap, Axle

NOTE: All component dimensions given in U.S. inches  
1 inch = 25.4 mm

# REPAIR PARTS

14 HP 42" TRACTOR - - MODEL NUMBER 917.255450

## 42" MOWER LIFT





# REPAIR PARTS

14 HP 42" TRACTOR - - MODEL NUMBER 917.255450

42" MOWER LIFT

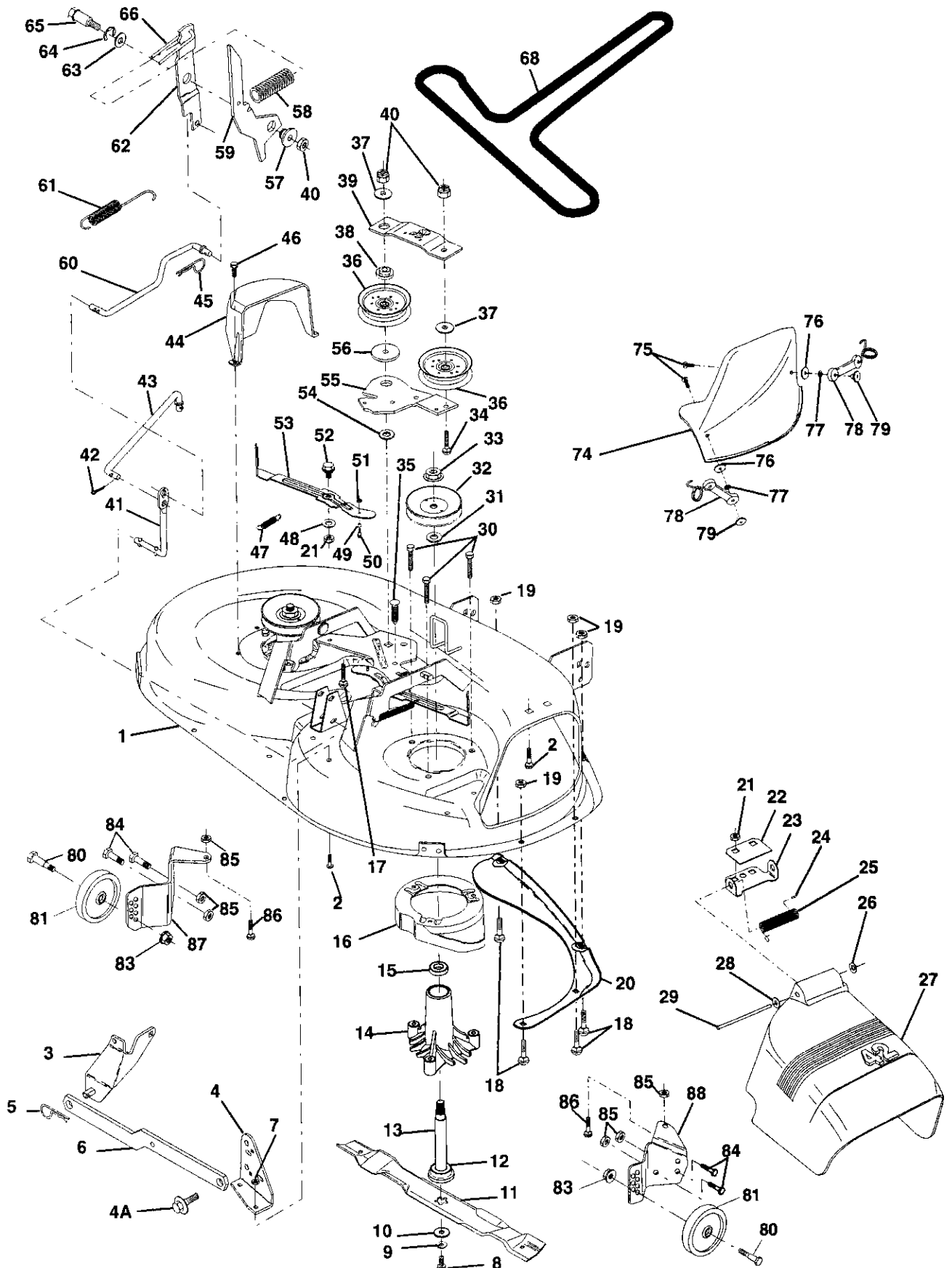
KEY PART NO.	PART NO.	DESCRIPTION
1	136971	Wire Asm., Inner w/plunger
2	136968	Shaft Asm Lift
3	138284	Pin Groove
4	12000002	E Ring #5133-62
5	19211416	Washer 21/32 X 7/8 X 16 Ga
6	120183X	Bearing Nylon
7	125631X	Grip Handle Fluted
8	122365X	Button, Plunger
10	122512X	Spring Cprsn
11	134619	Link Lift Lh Fixed Length
12	135388	Link Lift Rh Fixed Length
13	4939M	Retainer Spring
14	135563	Pin Roll Slit 5/16 X 1.25
15	127218	Link Front
16	73350800	Nut Jam Hex 1/2-13 Unc
17	130171	Trunnion Blk Zinc
18	73800800	Nut Lock W/Wsh 1/2-13 Unc
19	130832	Arm Suspension Rear
20	110810X	Trunnion Dp Stop Dbl Thds Plt
21	19151216	Washer 15/32 X 3/4 X 16 Ga
22	12000037	Ring Klip #T5304-37
23	110807X	Nut Special
24	19131016	Washer 13/32 X 5/8 X 16 Ga
25	2876H	Spring 2-1/8"
26	76020308	Pin Cotter 3/32 x 1/2
27	126971X	Rod Adjust Lift
28	73350600	Nut Hex Jam 3/8-16 Unc
29	138057	Knob Infinite 3/8-16 Unc Black

**NOTE:** All component dimensions given in U.S. inches  
1 inch = 25.4 mm

# REPAIR PARTS

14 HP 42" TRACTOR - - MODEL NUMBER 917.255450

## 42" MOWER DECK



# REPAIR PARTS

## 14 HP 42" TRACTOR - - MODEL NUMBER 917.255450

### 42" MOWER DECK

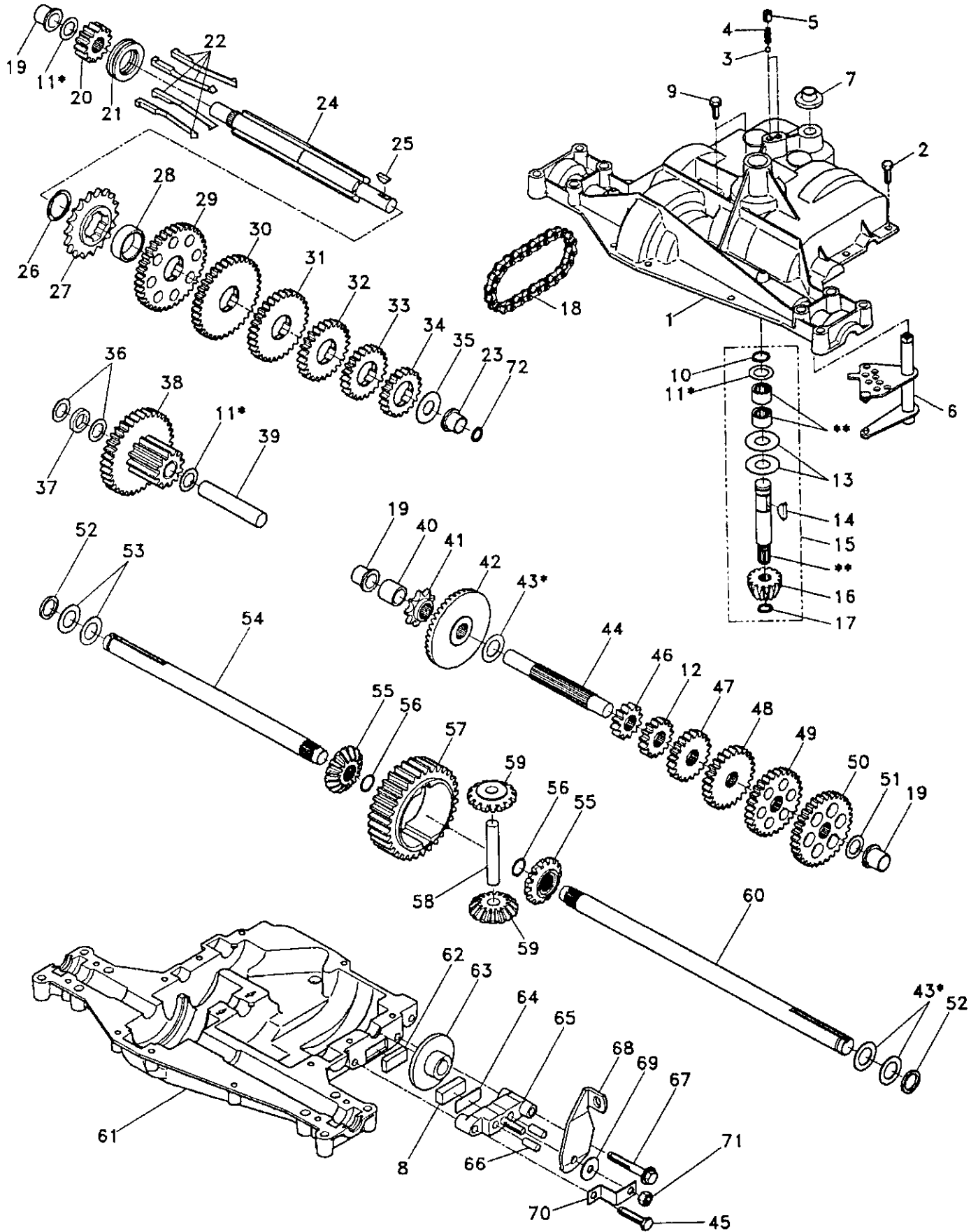
KEY PART NO. NO.	DESCRIPTION	KEY PART NO. NO.	DESCRIPTION
1	138024 Mower Deck Assembly, 42"	43	133504 Rod, Clutch, Secondary, with Nibs
2	STD533107 Bolt	44	134236 Guard, Mandrel, LH
3	138017 Bracket Asm Fr. Sway Bar	45	STD624003 Retainer
4	138440 Bracket Asm Deck 42" Sway Bar	46	17720410 Screw, Hex Head, Thread Cutting 1/4-20 x 5/8
4A	132827 Bolt, Shoulder	47	131335 Spring, Extension
5	STD624008 Retainer Spring	48	133944 Washer, Hardened
6	130832 Arm, Suspension, Rear	49	133940 Roller Assembly, Cam Follower
7	73800500 Locknut 5/16-18	50	131340 Bolt, Shoulder #10-24 Grade 5
8	850857 Bolt 3/8-24 x 1.25 Grade 8	51	STD541410 Locknut
9	STD551137 Washer, Lock	52	105529X Bolt, Shoulder 5/16-18 UNC
10	129962 Washer, Hardened	53	131845 Arm Assembly, Pad, Brake
11	134149 Blade, Mulching, 42" Mower Deck	54	133943 Washer, Hardened
12	129895 Bearing, Ball	55	133844 Arm, Idler
13	133172 Shaft Assembly, Mandrel, Vented (Includes Key Number 6)	56	122052X Spacer, Retainer
14	128774 Housing, Mandrel, Vented	57	127498 Bushing, Large, Brass
15	110485X Bearing, Ball, Mandrel	58	128759 Spring, Mower Clutch
16	136929 Stripper, Vented Mower Deck	59	127846 Arm, Clutch, Primary
17	72110618 Bolt, Carriage 3/8-16 x 2-1/4	60	134666 Rod, Clutch, Primary, with Nibs
18	72110505 Bolt, Carriage 5/16-18 x 5/8	61	133435 Spring, Extension, Return
19	73800500 Locknut 5/16-18	62	127847 Arm, Clutch, Secondary
20	136888 Baffle, Vortex	63	121748X Washer 25/32 x 1-5/8 x 16 Gauge
21	STD541431 Nut	64	12000029 Ring, Klip
22	134753 Stiffener Bracket	65	128903 Bolt, Shoulder 3/8-16 UNC x 1.44
23	131267 Bracket, Deflector	66	127845 Keeper, Spring
24	105304X Cap, Sleeve	68	130969 V-Belt, 42" Mower
25	123713X Spring, Torsion, Deflector	74	136420 Mulcher Cover
26	110452X Nut, Push	75	71161010 Screw
27	130968 Shield, Deflector	76	19061216 Washer #10
28	19111016 Washer 11/32 x 5/8 x 16 Gauge	77	STD551110 Washer, Lock
29	131491 Rod, Hinge	78	130758 Latch Assembly, Bagger
30	78158 Bolt 5/16-18 x 1.25	79	2029J Nut, Weld
31	129963 Washer, Spacer	80	133814 Bolt, Shoulder
32	129861 Pulley, Mandrel	81	133957 Wheel, Gauge, Donut
33	73050900 Nut, Toplock 9/16	83	73980600 Nut, Crownlock 3/8 - 16
34	STD533717 Bolt	84	74760512 Bolt, Hex Head 5/16 - 18 UNC x 3/4
35	133835 Fastner, Christmas Tree	85	73510500 Nut, Keps 5/16 - 18 UNC
36	131494 Pulley, Idler, Flat	86	72110504 Bolt, Carriage 5/16 UNC x 1/2
37	19131612 Washer 13/32 x 1 x 12 Gauge	87	132263 Bracket, Gauge, Wheel LH
38	133502 Spacer, Idler Arm, Upper	88	132262 Bracket, Gauge, Wheel RH
39	133503 Stiffner, Idler Arm, Upper, Hardened	--	130794 Mandrel Assembly (Includes Key Numbers 8-10, 12-15, 31 and 33))
40	STD541437 Nut	--	136322 Mower Deck, Complete (Std Deck - order mulcher blade, mulching and gauge wheel components separately - key nos. 11, 74 thru 79 and 80 thru 88)
41	133551 Rod, Pivot, with Nibs		
42	STD560907 Cotter Pin		

**NOTE:** All component dimensions given in U.S. inches  
1 inch = 25.4 mm

# REPAIR PARTS

14 HP 42" TRACTOR - - MODEL NUMBER 917.255450

DANA TRANSAXLE - MODEL NUMBER 4360-55



# REPAIR PARTS

14 HP 42" TRACTOR - - MODEL NUMBER 917.255450

DANA TRANSAXLE - MODEL NUMBER 4360-55

KEY PART NO. NO.	DESCRIPTION	KEY PART NO. NO.	DESCRIPTION
1 138248	Housing, Upper	41 105928X	Sprocket, 9 Teeth
2 2274J	Screw, Self-Tapping, Large 1/4-20 x .734	42 106605X	Gear, Bevel, 42 Teeth
3 134400	Ball, Detent	43 134394	* Assembly, Kit, Shim .750 Shaft
4 105904X	Spring, Detent	44 120473X	Shaft, Drive
5 105905X	Screw, Set	45 106596X	Screw, Self-Tapping, Large 5/16-18 x 1.44
6 134788	Kit, Shifter Assembly	46 105933X	Gear, Spur, 12 Teeth
7 134399	Boot, Shifter	47 120407X	Gear, Spur, 20 Teeth
8 120951X	Puck, Friction	48 106589X	Gear, Spur, 25 Teeth
9 134791	Screw, Self-Tapping, with Sealer	49 120408X	Gear, Spur, 28 Teeth
10 2267J	Ring, Retaining	50 105937X	Gear, Spur, 31 Teeth
11 134793	* Assembly, Kit, Shim, .625 Shaft	51 2226J	Washer, Plain .632 x 1.00 x .060
12 106151X	Gear, Spur, 15 Teeth	52 134401	Washer, Neoprene
13 120415X	Washer, Plain .632 x 1.38 x .046	53 2264J	Washer, Plain .758 x 1.25 x .031
14 2257J	Key, Woodruff, #9	54 120474X	Axle, L.H.
15 106846X	Assembly, Kit, Input Shaft	55 120409X	Gear, Miter, 15 Teeth
16 106095X	Pinion, Bevel, 14 Teeth	56 105941X	Ring, Retaining
17 105909X	Ring, Retaining	57 110071X	Gear, Spur, 32 Teeth
18 105910X	Chain, 24 Pitches	58 120952X	Shaft, Cross
19 105911X	Bearing, Flange	59 106592X	Gear, Miter, 15 Teeth
20 138242	Gear, Spur, 14 Teeth	60 120475X	Axle, R.H.
21 138246	Collar, Clutch	61 138247	Housing, Lower
22 138238	Assembly, Kit, Clutch Keys	62 120961X	Puck, Friction
23 138240	Bearing, Flange	63 7294J	Disc, Brake
24 138245	Shaft, Intermediate	64 108989X	Spacer
25 2244J	Key, Woodruff, #61	65 120953X	Jaw, Brake
26 105916X	Ring, Retaining	66 120954X	Pin, Dowel
27 120470X	Sprocket, 18 Teeth	67 134799	Screw, Self-Tapping, Large 5/16-18 x 2.25
28 110070X	Spacer	68 138244	Lever, Actuating
29 108977X	Gear, Spur, 37 Teeth	69 108996X	Washer, Plain .321 x 1.00 x .055
30 109254X	Gear, Spur, 35 Teeth	70 120956X	Bracket, Anti-Rotation
31 124644X	Gear, Spur, 30 Teeth	71 73810500	Locknut 5/16-24
32 108980X	Gear, Spur, 25 Teeth	72 138241	Square Ring
33 120406X	Gear, Spur, 22 Teeth	73 120416X	Grease
34 134796	Gear, Spur, 19 Teeth		
35 105925X	Washer, Plain .640 x 1.37 x .061		
36 2232J	Washer, Plain .632 x 1.00 x .026		
37 108978X	Spacer .630 x 1.00 x .169		
38 110079X	Assembly, Gear, Combination of 12 Teeth and 35 Teeth		
39 124639X	Shaft, Idler		
40 120472X	Spacer .633 x .87 x .755		

\* Use in combinations to maintain proper clearances

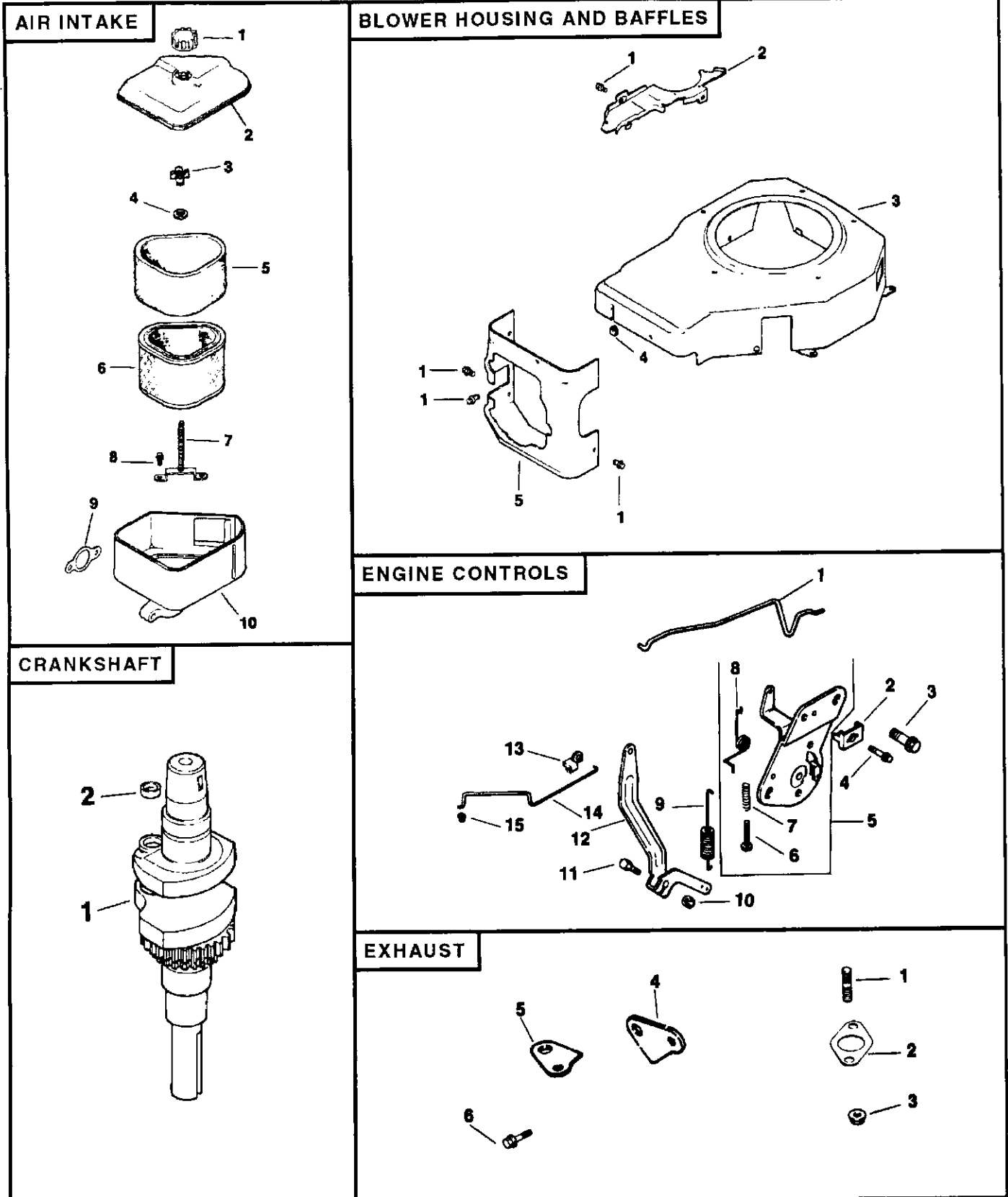
\*\* Order Key No. 15

**NOTE:** All component dimensions given in U.S. inches  
1 inch = 25.4 mm

# REPAIR PARTS

14 HP 42" TRACTOR - - MODEL NUMBER 917.255450

KOHLER ENGINE - MODEL NUMBER CV14S, TYPE NUMBER 1451



# REPAIR PARTS

## 14 HP 42" TRACTOR - - MODEL NUMBER 917.255450

### KOHLER ENGINE - MODEL NUMBER CV14S, TYPE NUMBER 1451

#### AIR INTAKE

KEY PART NO. NO.	DESCRIPTION
1 12 341 01	Knob, Air Cleaner Cover
2 12 096 06	Cover, Air Cleaner
3 12 100 01	Wing Nut
4 X-25-63	Washer, Plain 1/4
5 12 083 08	Precleaner Element
6 12 083 05	Element, Air Cleaner
7 12 072 03	Stud, Mounting Plate
8 12 086 01	Screw, Mounting Plate Stud
9 12 041 02	Gasket, Air Cleaner
10 12 094 01	Base, Air Cleaner

#### NOT ILLUSTRATED

-- 12 113 27	Decal, Air Cleaner
--------------	--------------------

#### EXHAUST

KEY PART NO. NO.	DESCRIPTION
1 M-0829033	Stud, Exhaust Manifold M8 x 1.25 x 20 (2)
2 12 041 03	Gasket, Exhaust Manifold
3 SM-0841080	Nut, Muffler Mounting M8 x 1.25 (2)
4 12 126 11	Bracket, Muffler
5 12 445 01	Strap, Lifting
6 SM-0645025	Screw, Lifting Strap M6 x 1.0 x 25 (3)

#### CRANKSHAFT

KEY PART NO. NO.	DESCRIPTION
1 12 014 02	Crankshaft
2 12 139 01	Plug, Cup
-- 12 522 01	Short Block
-- 12 755 01	Gasket Set

#### BLOWER HOUSING AND BAFFLES

KEY PART NO. NO.	DESCRIPTION
1 SM-0545010	Screw, Mounting M5 x 0.8 x 10 (12)
2 12 146 07	Plate, Blower Housing
3 12 027 14	Housing, Blower
4 12 313 03	Grommet, Blower Housing
5 12 063 08	Baffle, Cylinder Head

#### NOT ILLUSTRATED

-- 12 113 28	Decal, Horsepower
--------------	-------------------

#### ENGINE CONTROLS

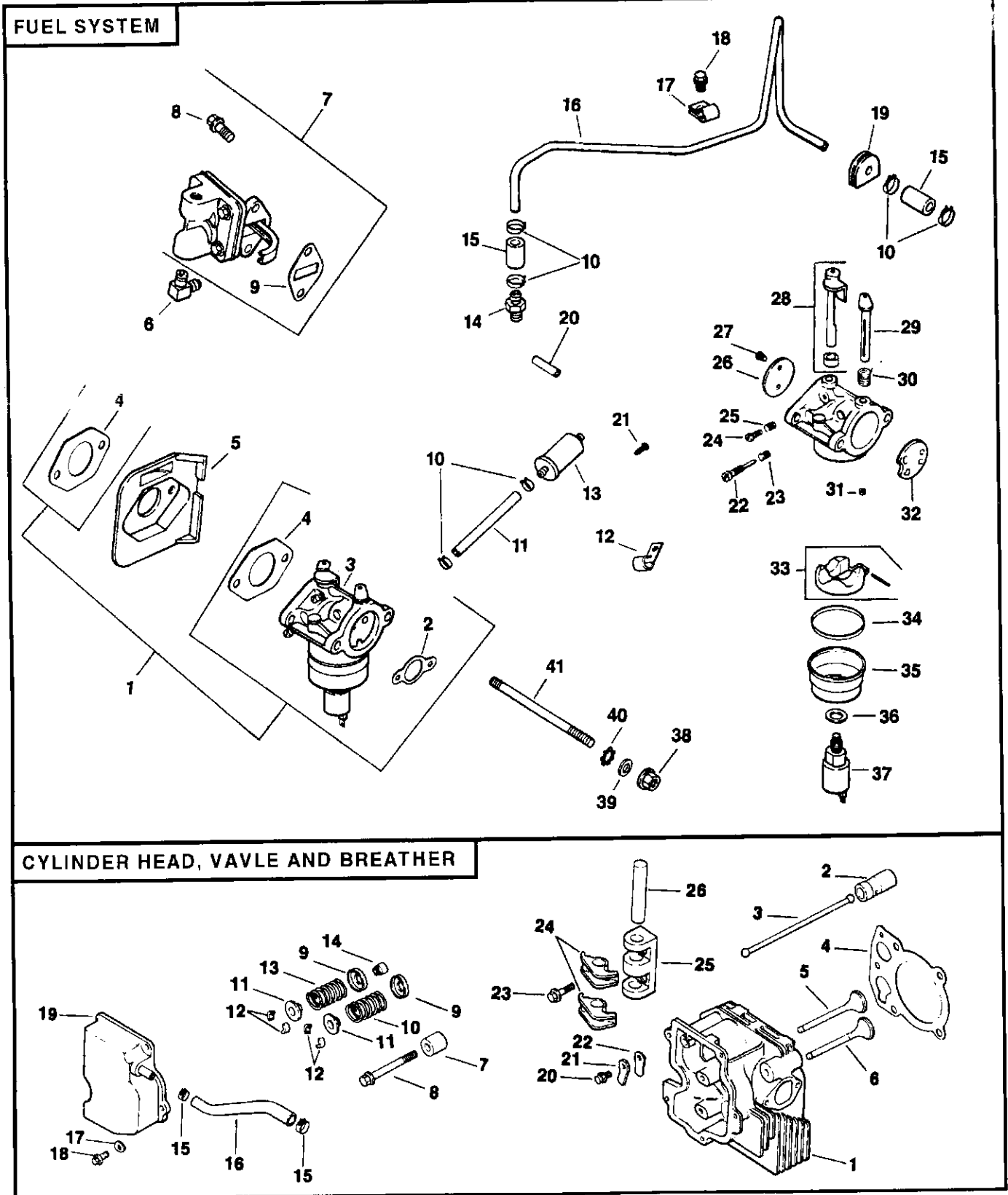
KEY PART NO. NO.	DESCRIPTION
1 12 079 07	Linkage, Choke
2 12 237 01	Clamp, Cable
3 SM-0645016	Screw, Hex Head M6 x 1.0 x 16 (2)
4 SM-0545016	Screw, Cable Clamp M5 x .8 x 16
5 12 536 01	Control, Speed Assembly (Includes Key Numbers 6 through 8)
6 SM-0443025	Screw
7 12 089 11	Spring, Choke Adjust
8 12 089 04	Spring, Choke Return
9 12 089 19	Spring, Governor
10 SM-0641060	Nut, Governor Arm M6 x 1.0
11 SM-0642025	Screw, Governor Arm M6 x 1.0 x 25
12 12 090 05	Lever, Governor
13 25 158 11	Bushing
14 12 079 01	Linkage, Throttle
15 25 158 08	Bushing

**NOTE:** All component dimensions given in U.S. inches  
1 inch = 25.4 mm

# REPAIR PARTS

14 HP 42" TRACTOR - - MODEL NUMBER 917.255450

KOHLER ENGINE - MODEL NUMBER CV14S, TYPE NUMBER 1451





# REPAIR PARTS

## 14 HP 42" TRACTOR - - MODEL NUMBER 917.255450

### KOHLER ENGINE - MODEL NUMBER CV14S, TYPE NUMBER 1451

#### FUEL SYSTEM

KEY PART NO. NO.	DESCRIPTION
1 12 853 08	Kit, Carburetor (Includes Key Numbers 2 through 4)
2 12 041 02	Gasket, Air Cleaner
3 12 053 09	Carburetor Assembly (For Information Only - Not Available Separately) (Includes Key Numbers 22 thru 37)
4 12 041 01	Gasket, Carburetor (2)
5 12 265 01	Deflector, Heat
6 25 155 02	Connector, Hose
7 12 559 01	Kit, Fuel Pump (Includes Key Numbers 8 and 9)
8 SM-0645020	Screw, Fuel Pump M6 x 1.0 x 20 (2)
9 25 041 09	Gasket, Fuel Pump
10 X-426-9	Clamp, Hose (6)
11 52 353 22	Fuel Line, Flexible
12 47 154 01	Clip, Cable
13 25 050 02	Filter, Fuel
14 X-380-1	Connector, Hose
15 12 353 01	Line, Fuel, Rubber, 1/4" (2)
16 12 123 01	Line, Fuel, Metal
17 12 154 01	Clamp, Fuel Line
18 SM-0545010	Screw, Fuel Line Clamp
19 12 313 01	Grommet, Fuel Line
20 12 431 01	Sleeve, Insulating
21 12 086 07	Screw, Ground Wire
22 12 368 01	Needle, Idle, Fuel Adjust
23 12 089 09	Spring, Idle Fuel
24 12 086 04	Screw, Idle Speed Adjust
25 12 089 09	Spring, Idle Speed
26 12 146 03	Plate, Throttle
27 25 086 27	Screw, Throttle Plate (2)
28 12 144 09	Shaft, Throttle with Lever and Seal
29 12 144 08	Shaft, Choke
30 12 089 10	Spring, Choke Return
31 12 337 01	Jet, Main
32 12 146 02	Plate, Choke
33 12 757 02	Kit, Float
34 12 041 05	Gasket, Bowl
35 12 104 01	Bowl, Fuel
36 12 041 06	Gasket, Bowl Retainer Screw
37 12 757 09	Kit, Solenoid Assembly
38 SM-0641060	Nut, Carburetor M6 x 1.0 (2)
39 X-25-63	Washer, Plain 1/4
40 X-22-11	Washer, Internal Tooth 1/4
41 M-0629122	Stud, Carburetor M6 x 1.0 x 110 (2)

#### NOT ILLUSTRATED

-- 12 757 01	Kit, Carburetor Repair
-- 12 755 09	Kit, High Altitude Jet
-- 12 518 05	Lead, Solenoid, Black, 5", 14 Gauge, Uninsulated Push-On Tabs
-- 41 518 34	Lead, Ground, Green, 5", 18 Gauge Insulated Grip Barrel Eyelets

#### CYLINDER HEAD, VALVE AND BREATHER

KEY PART NO. NO.	DESCRIPTION
1 12 318 02	Head, Cylinder
2 12 351 01	Lifter, Valve (2)
3 12 411 01	Rod, Push (2)
4 12 041 08	Gasket, Cylinder Head
5 12 017 01	Valve, Intake, Standard Size
12 017 02	Valve, Intake, .25" Oversize
6 12 016 01	Valve, Exhaust, Standard
12 016 02	Valve, Exhaust, .25" Oversize
7 12 112 13	Spacer, Head Bolt Exhaust Port
8 12 086 15	Screw, Cylinder Head M10 x 1.5 x 80 (5)
9 12 089 15	Spring, Exhaust Valve
10 12 173 01	Cap, Valve Spring (2)
11 12 755 03	Kit, Retainer (2)
12 12 089 01	Spring, Intake Valve
13 X-426-9	Clamp, Hose (2)
14 12 326 03	Hose, Breather
15 12 468 05	Washer, Flat
16 SM-0645020	Screw, Valve Cover M6 x 1.0 x 20 (5)
17 12 096 07	Cover, Valve with Nipple
18 M-0640034	Screw, Rocker Arm M6 x 1 x 34 (2)
19 24 194 01	Ball, Rocker Pivot (2)
20 24 186 01	Arm, Rocker (2)
21 12 146 13	Plate, Guide
22 SM-0545010	Screw, Breather Reed Retainer M5 x 0.8 x 10
23 12 018 01	Retainer, Breather Reed
24 12 402 01	Reed, Breather

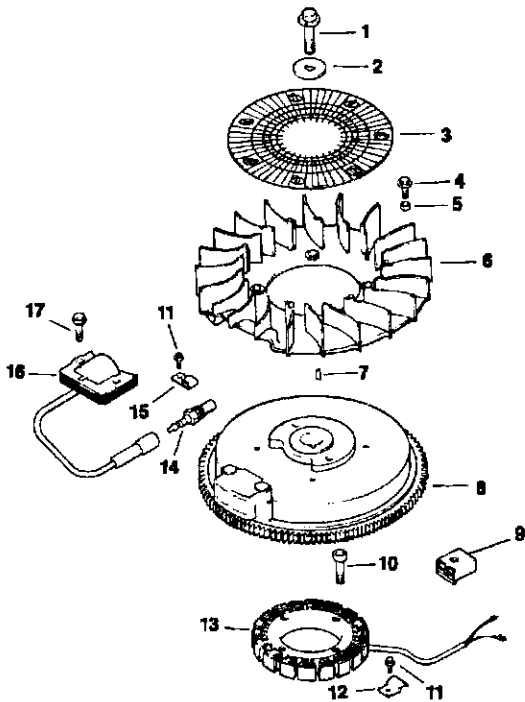
**NOTE:** All component dimensions given in U.S. inches  
1 inch = 25.4 mm

# REPAIR PARTS

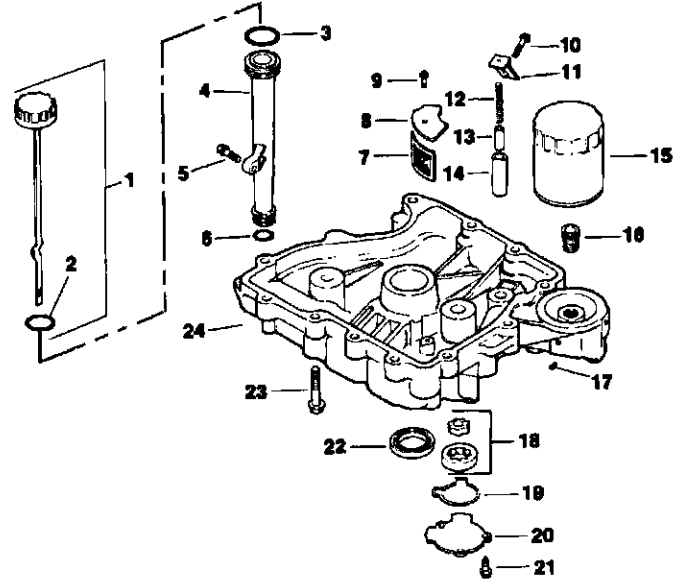
14 HP 42" TRACTOR - - MODEL NUMBER 917.255450

KOHLER ENGINE - MODEL NUMBER CV14S, TYPE NUMBER 1451

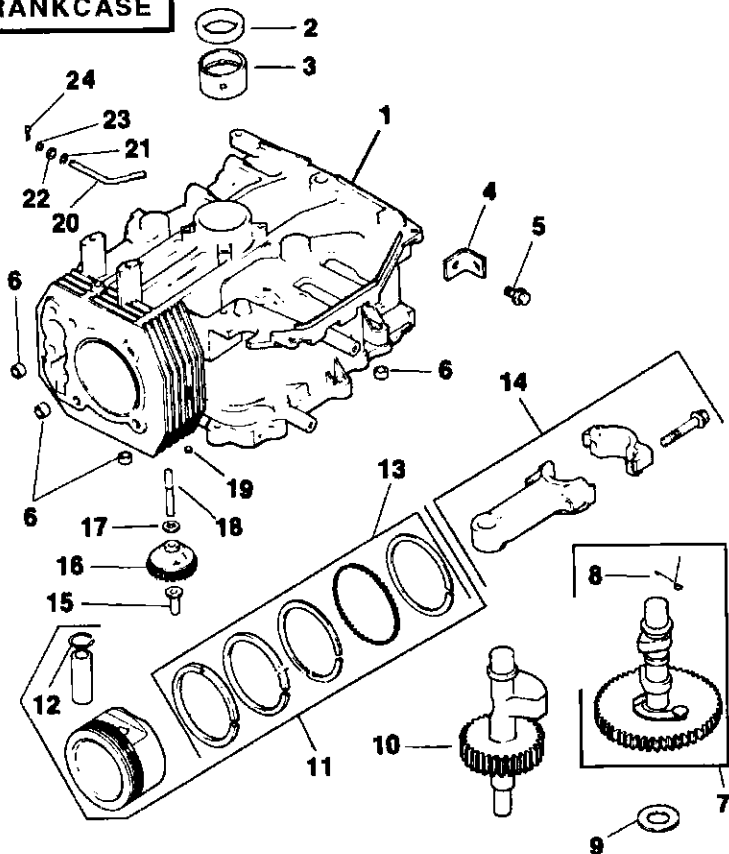
## IGNITION / ELECTRICAL



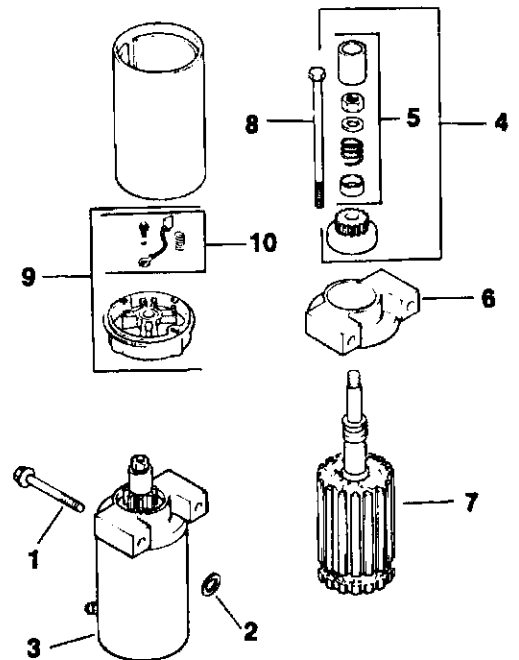
## OIL PAN / LUBRICATION



## CRANKCASE



## STARTING SYSTEM



# REPAIR PARTS

## 14 HP 42" TRACTOR - - MODEL NUMBER 917.255450

### KOHLER ENGINE - MODEL NUMBER CV14S, TYPE NUMBER 1451

#### IGNITION / ELECTRICAL

##### KEY PART

NO.	NO.	DESCRIPTION
1	12 086 14	Screw, Flywheel M10 x 1.5 x 45.8
2	12 468 03	Washer, Flywheel
3	12 162 01	Screen, Grass
4	M-0639016	Screw, Fan M6 x 1 x 13 (4)
5	12 112 01	Spacer, Fan (4)
6	12 157 02	Fan
7	X-42-15	Key
8	12 025 25	Flywheel Assembly
9	41 155 02	Connector
10	M-0548025	Screw, Stator Mounting M5 x 0.8 x 25 (4)
11	SM-0545010	Screw, Stator Harness Clip M5 x 0.8 x 10
12	12 154 02	Clip, Stator Harness
13	12 085 03	Stator Assembly
14	12 132 02	Spark Plug
15	X-728-1	Clip, Cable
16	12 584 01	Module, Ignition
17	SM-0545020	Screw, Ignition Module M5 x 0.8 x 20 (2)

#### NOT ILLUSTRATED

--	12 518 01	Lead, White, Ground To Kill (19", 18 Gauge, Fully Insulated Push-on Tab and Uninsulated Push-on Tab Terminals)
--	51 755 01	Kit, Diode

#### OIL PAN / LUBRICATION

##### KEY PART

NO.	NO.	DESCRIPTION
1	12 038 01	Dipstick Assembly (Includes Key Number 2)
2	12 153 03	O-Ring, Dipstick
3	12 153 02	O-Ring, Upper Oil Fill Tube
4	12 123 04	Tube, Oil Fill
5	SM-0545020	Screw, Oil Fill Tube M5 x 0.8 x 20
6	12 153 01	O-Ring, Lower Oil Fill Tube
7	12 162 02	Screen, Oil Pick-up
8	12 096 03	Cover, Oil Pick-up Screen
9	SM-0545016	Screw, Screen Cover
10	M-1051025	Screw, Oil Pump Relief Valve Bracket M10 x 1.5 x 25
11	12 126 02	Bracket, Oil Pump Relief Valve
12	12 089 03	Spring, Oil Pump Relief Valve
13	12 462 01	Piston, Oil Pump Relief Valve
14	12 208 01	Body, Oil Pump Relief Valve
15	12 050 01	Filter, Oil
16	12 136 01	Adapter, Oil Filter
17	X-75-10	Plug, Square Head, Solid 3/8 NPTF
18	12 393 01	Oil Pump Assembly
19	12 032 04	O-Ring, Oil Pump Cover
20	12 096 02	Cover, Oil Pump
21	SM-0545016	Screw, Oil Pump Cover M5 x 0.8 x 16 (3)
22	12 032 03	Seal, Oil (P.T.O. End)
23	SM-0839045	Screw, Oil Pan M8 x 1.25 x 45 (12)
24	12 199 33	Pan, Oil

#### CRANKCASE

##### KEY PART

NO.	NO.	DESCRIPTION
1	---	Block, Cylinder (Use Short Block, Part Number 12 522 01)
2	12 032 03	Seal, Crankshaft
3	12 030 01	Bearing, Crankshaft, Standard (Flywheel End)
	12 030 02	Bearing, Crankshaft .25" Oversize
	12 030 03	Bearing, Crankshaft .50" Oversize
4	12 445 02	Strap, Lifting
5	M-0839025	Screw, Lifting Strap M8 x 1.25 x 22
6	12 380 03	Dowel, Locating (4)
7	12 010 01	Camshaft Assembly (Includes #8)
8	12 089 18	Spring, Actuating
9	12 422 08	Shim, Camshaft
	12 422 09	Shim, Camshaft (as required)
	12 422 10	Shim, Camshaft (as required)
	12 422 11	Shim, Camshaft (as required)
	12 422 12	Shim, Camshaft (as required)
	12 422 13	Shim, Camshaft (as required)
	12 422 07	Shim, Camshaft (as required)
10	12 144 04	Shaft, Balance
11	12 874 01	Piston w/Ring Set, Standard
	12 874 02	Piston w/Ring Set .25" Oversize
	12 874 03	Piston w/Ring Set .50" Oversize
12	12 018 02	Retainer, Piston Pin (2)
13	12 108 01	Ring Set, Standard
	12 108 02	Ring Set .25" Oversize
	12 108 03	Ring Set .50" Oversize
14	12 067 01	Connecting Rod, Standard
	12 067 02	Connecting Rod .25" Oversize
15	12 380 01	Pin, Governor Regulating
16	12 043 05	Gear, Governor Assembly
17	SM-0631005	Washer, Governor Gear Thrust
18	12 144 02	Shaft, Governor Gear
19	52 139 09	Plug, Cup
20	12 144 01	Shaft, Governor Cross
21	SM-0631015	Washer, Governor Shaft
22	12 032 01	Seal, Governor Cross Shaft
23	X-25-102	Washer, Plain 1/4
24	12 380 04	Pin, Governor Hitch

#### STARTING SYSTEM

##### KEY PART

NO.	NO.	DESCRIPTION
1	M-0839070	Screw, Bendix Starter M8 x 1/25 x 70 (2)
2	12 468 01	Washer (2)
3	12 098 05	Starter Bendix (Includes #4-10)
4	12 755 12	Kit, Drive (Includes Key Number 5)
5	12 755 06	Kit, Drive Parts
6	12 227 01	Cap, Drive End
7	12 170 02	Armature
8	12 086 02	Screw, Hex Flange
9	12 243 01	Cap, Commutator End (Includes Key Number 10)
10	52 755 15	Kit, Brush

#### NOT ILLUSTRATED

--	52 357 01	Lubricant, Starter
----	-----------	--------------------

**NOTE:** All component dimensions given in U.S. inches  
1 inch = 25.4 mm

---

# SERVICE NOTES

---

48