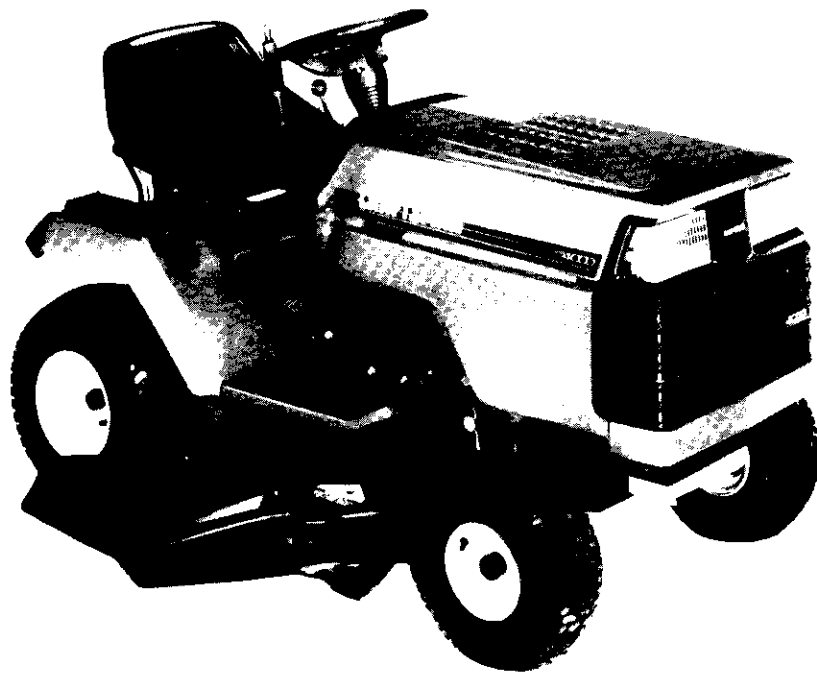


SEARS
OWNER'S
MANUAL

MODEL NO.
917.255541

Caution:
Read and follow
all Safety Rules
and Instructions
Before Operating
This Equipment



CRAFTSMAN[®]
14.0 HP TWIN CYLINDER
ELECTRIC START
38" MOWER
6 SPEED TRANSAXLE
LAWN TRACTOR

- Assembly
- Operation
- Maintenance
- Service and Adjustment
- Repair Parts

SAFETY RULES



CAUTION: ALWAYS DISCONNECT SPARK PLUG WIRE AND PLACE WIRE WHERE IT CANNOT CONTACT SPARK PLUG TO PREVENT ACCIDENTAL STARTING WHEN SETTING-UP, TRANSPORTING, ADJUSTING OR MAKING REPAIRS.



IMPORTANT

SAFETY STANDARDS REQUIRE OPERATOR PRESENCE CONTROLS TO MINIMIZE THE RISK OF INJURY. YOUR UNIT IS EQUIPPED WITH SUCH CONTROLS. DO NOT ATTEMPT TO DEFEAT THE FUNCTION OF THE OPERATOR PRESENCE CONTROLS UNDER ANY CIRCUMSTANCES.

TRAINING:

- Know the controls and how to stop quickly. Read this owner's manual and instructions furnished with attachments.
- Do not allow children to operate the machine. Do not allow adults to operate it without proper instruction.
- Do not carry passengers. Do not mow when children and others are around.
- Do not attempt to operate your vehicle or mower when not in the driver's seat.
- Always get on or off your vehicle from the operator's left hand side.
- The vehicle and attachments should be stopped and inspected for damage after striking a foreign object, and the damage should be repaired before restarting and operating the equipment.
- Never mow in wet or slippery grass, when traction is unsure, or at a speed which could cause a skid.
- Stay alert for holes in the terrain and other hidden hazards. Keep away from drop-offs.
- Do not drive too close to creeks, ditches, and public high-ways.
- Exercise special care when mowing around fixed objects in order to prevent the blades from striking them. Never deliberately run vehicle or mower into or over any foreign objects.
- Never shift gears until vehicle comes to a stop.
- Never place hands or feet under the mower, in discharge chute, or near any moving parts while vehicle or mower is running. Always keep clear of discharge chute.
- Use care when pulling loads or using heavy equipment.
 - Use only approved drawbar hitch points.
 - Limit loads to those you can safely control.
 - Do not turn sharply. Use care when backing.
 - Use counterweight or wheel weights when suggested in owner's manual.
- Watch out for traffic when crossing or near roadways.
- When using any attachments, never direct discharge of material toward bystanders nor allow anyone near the vehicle while in operation.
- Except for adjustments, do not operate engine if air cleaner or cover directly over carburetor air intake is removed. Removal of such part could create a fire hazard.
- Do not change the engine governor settings or overspeed the engine; severe damage or injury may result.
- When using the vehicle with mower, proceed as follows:
 - Mow only in daylight or in good artificial light.
 - Shut the engine off when unclogging chute.
 - Check the blade mounting bolts for proper tightness at frequent intervals.
- Disengage power to mower before backing up. Do not mow in reverse unless absolutely necessary and then only after careful observation of the entire area behind the mower.

PREPARATION:

- Always wear substantial footwear. Do not wear loose fitting clothing that could get caught in moving parts.
- Clear the work area of objects (wire, rocks, etc.) which might be picked up and thrown.
- Disengage all attachment clutches before attempting to start the engine.
- Handle gasoline with care - it is highly flammable.
 - Use approved gasoline containers.
 - Never remove the fuel cap of the fuel tank or add gasoline to a running or hot engine or an engine that has not been allowed to cool for several minutes after running. Never fill tank indoors. Always clean up spilled gasoline.
 - Open doors if the engine is run in the garage - exhaust fumes are dangerous. Do not run the engine indoors.
- Do not operate the mower without the entire grass catcher, on mowers so equipped, or the deflector shield in place.

OPERATION:

- Keep your eyes and mind on your vehicle, mower, and the area being cut. Do not let other interests distract you.
- Disengage power to attachments and stop the engine before leaving the operator's position.
- Disengage power to mower, stop the engine, and disconnect spark plug wire(s) from spark plug(s) before cleaning, making an adjustment, or repair. Be careful to avoid touching hot muffler or engine components.
- Disengage power to attachments when transporting or not in use.
- Take all possible precautions when leaving the vehicle unattended. Disengage the power take-off, lower the attachments, shift into neutral, set the parking brake, stop the engine, and remove the key.
- Do not stop or start suddenly when going uphill or downhill. Mow up and down the face of slopes (not greater than 15°), never across the face.
- Reduce speed on slopes and make turns gradually to prevent tipping or loss of control. Exercise extreme caution when changing direction on slopes.
- While going up or down slopes, place gearshift control lever in 1st gear position to negotiate the slope without stopping.

MAINTENANCE AND STORAGE

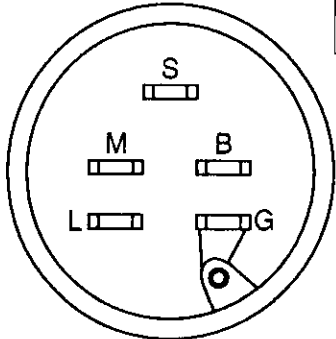
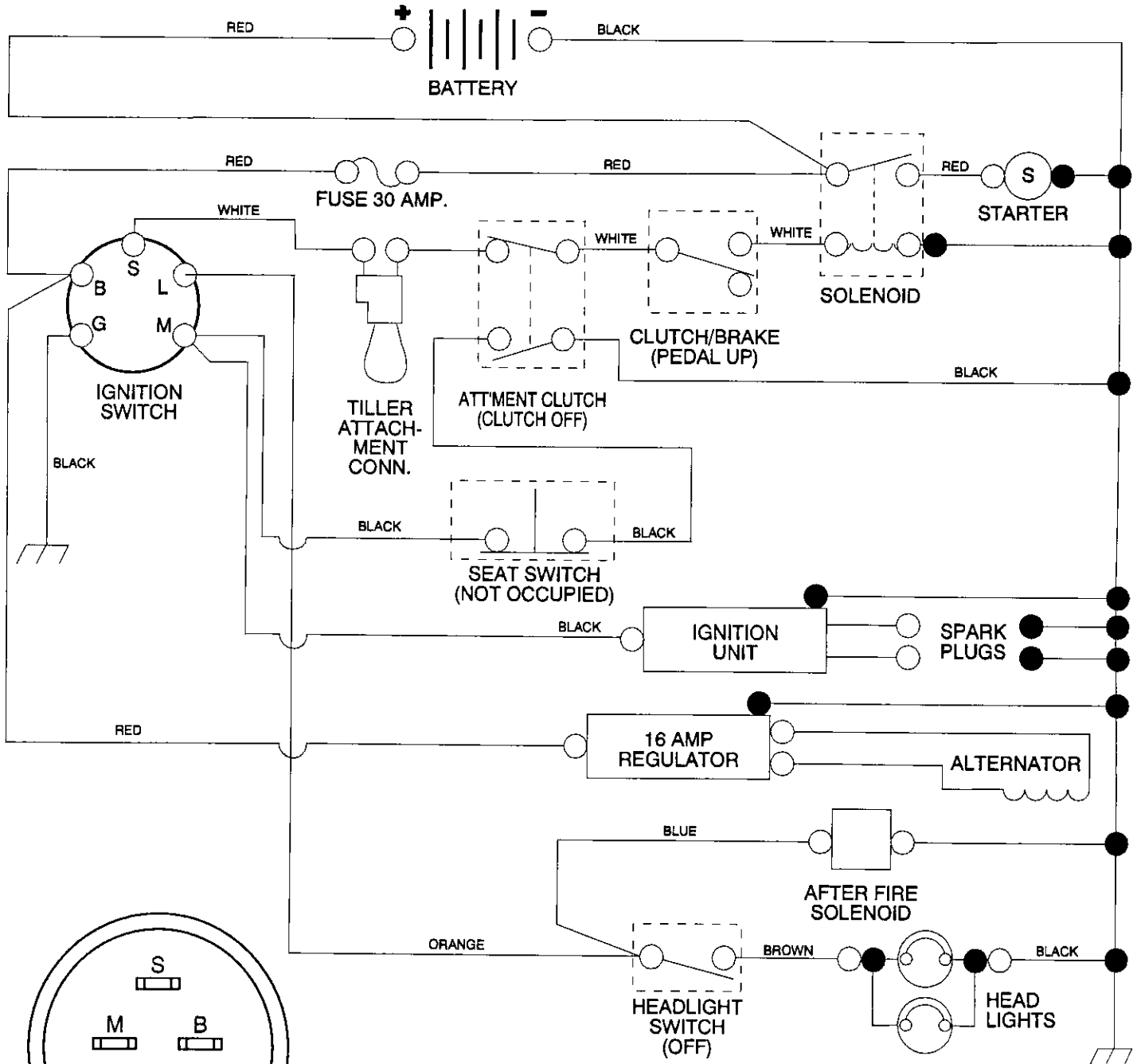
- Keep the vehicle and attachments in good operating condition, and keep safety devices in place and working.
- Keep all nuts, bolts, and screws tight to be sure the equipment is in safe working condition.
- Never store the equipment with gasoline in the tank inside a building where fumes may reach an open flame or spark. Allow the engine to cool before storing in any enclosure.
- To reduce fire hazard, keep the engine free of grass, leaves, or excessive grease. Do not clean product while engine is running.
- Do not operate without a muffler, or tamper with exhaust system. Damaged mufflers or spark arresters could create a fire hazard. Inspect periodically and replace if necessary.
- Under normal usage the grass catcher bag material is subject to deterioration and wear. It should be checked frequently for bag replacement. Replacement bags should be checked to ensure compliance with the original manufacturer's recommendations or specifications.



LOOK FOR THIS SYMBOL TO POINT OUT IMPORTANT SAFETY PRECAUTIONS. IT MEANS - ATTENTION!!! BECOME ALERT!!! YOUR SAFETY IS INVOLVED.

14 HP 38" RIDING LAWN TRACTOR - - MODEL NUMBER 917.255541

SCHEMATIC



IGNITION SWITCH

POSITION	CIRCUIT
OFF	M + G
ON	B + L
START	B + S + L

WIRING INSULATED CLIPS

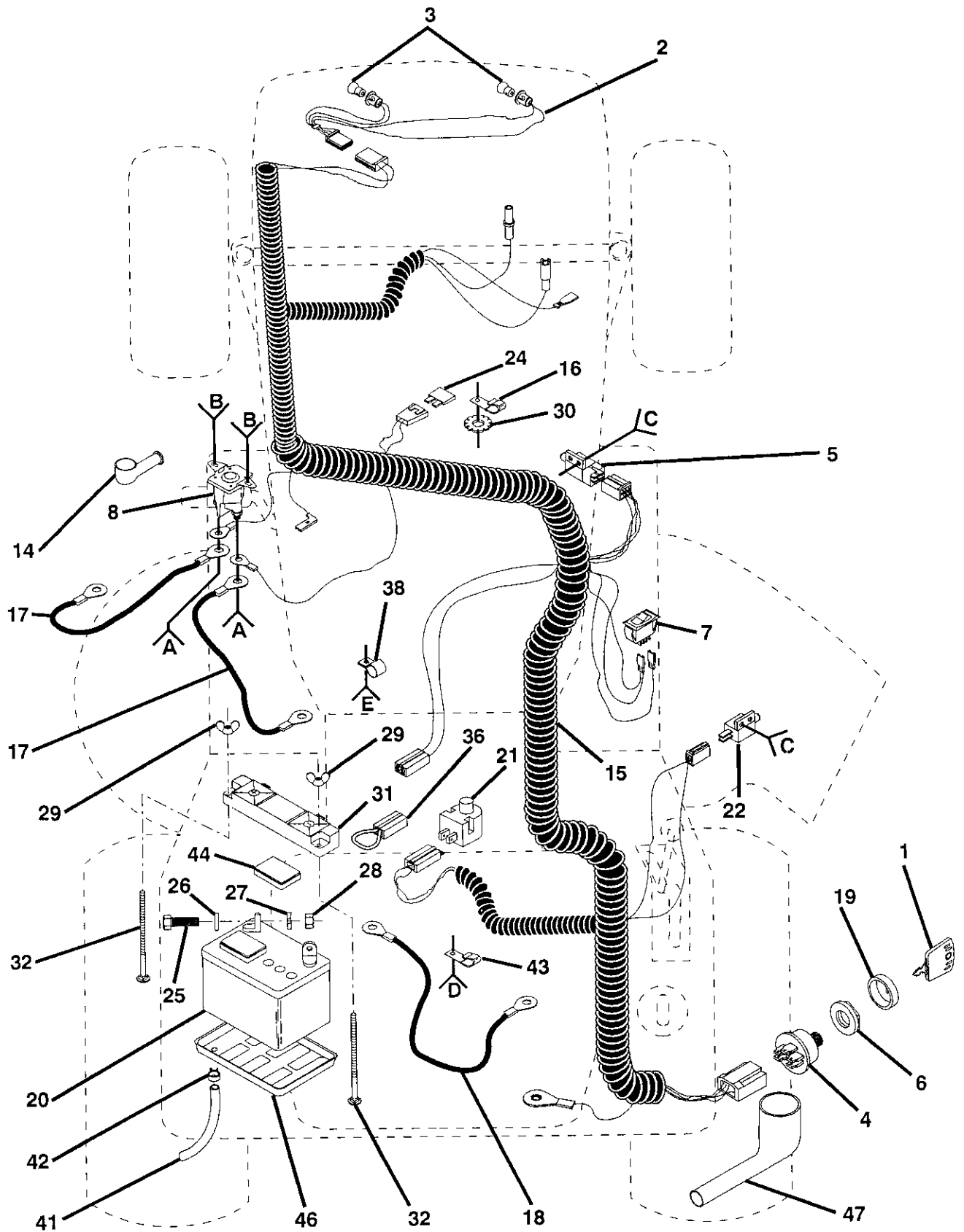
NOTE: IF WIRING INSULATED CLIPS WERE REMOVED FOR SERVICING OF UNIT, THEY SHOULD BE REPLACED TO PROPERLY SECURE YOUR WIRING

- NON-REMOVABLE CONNECTIONS
- REMOVABLE CONNECTIONS

REPAIR PARTS

14 HP 38" RIDING LAWN TRACTOR - - MODEL NUMBER 917.255541

ELECTRICAL



REPAIR PARTS

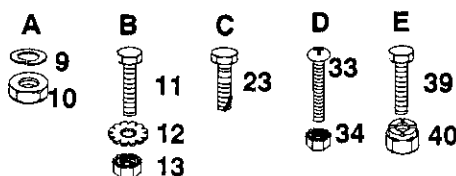
14 HP 38"RIDING LAWN TRACTOR - - MODEL NUMBER 917.255541

ELECTRICAL

KEY NO.	PART NO.	DESCRIPTION	KEY NO.	PART NO.	DESCRIPTION
1	109310X	Molded, Key	26	19091016	Washer 9/32 x 5/8 x 16 Gauge
2	110859X	Harness, Light Socket	27	10040400	Washer, Lock 1/4
3	4152J	Bulb, Light	28	73220400	Nut, Hex 1/4-20
4	102972X	Switch, Ignition	29	123198X	Nut, Wing 1/4-20
5	109553X	Switch, Interlock, Attachment, Clutch	30	11050600	Washer, Lock, External Tooth 3/4
6	124211X	Ignition, Nut	31	102476X	Guard, Terminal
7	110712X	Switch, Light	32	72240460	Bolt, Carriage 1/4-20 x 7-1/2
8	109081X	Solenoid	33	74641008	Screw, Slotted Pan Head #10-32 x 1/2
9	10090400	Washer, Lock 1/4	34	73951000	Nut, Keps #10-32 x 1/2
10	73350400	Nut, Jam 1/4-20	36	102501X	Wire, Loop
11	74780408	Bolt, Hex, Fin 1/4-20 x 1/2	38	235R	Clip, Insulation
12	11050400	Washer, Lock, External Tooth 1/4	39	74780408	Bolt, Hex 1/4-20 x 1/2
13	73510400	Nut, Keps 1/4-20	40	73680400	Nut, Crownlock 1/4-20
14	719J	Cover, Terminal	41	100541K	Tube
15	127873	Harness, Ignition	42	109596X	Clamp, Hose
16	2751R	Clip, Fuel Line	43	4171R	Clip, Insulated
17	4206J	Cable, Battery	44	121264X	Caps, Battery
18	4207J	Cable, Ground	46	7603J	Tray, Battery
19	123620X	Cover, Key Switch	47	123620X	Cover, Key Switch
20	121537X	Battery (Includes Battery Acid)	—	101539X	Sheet, Instruction, Tractor 15° Slope
21	121305X	Switch, Seat	—	120960X	Decal, Battery
22	104445X	Switch, Interlock, Clutch	—	132283	Owners Manual
23	17021008	Screw, Hex, Tap #10-24 x 1/2			
24	108824X	Fuse,			
25	74760412	Bolt, Hex 1/4-20 x 3/4			

* STANDARD HARDWARE - PURCHASE LOCALLY

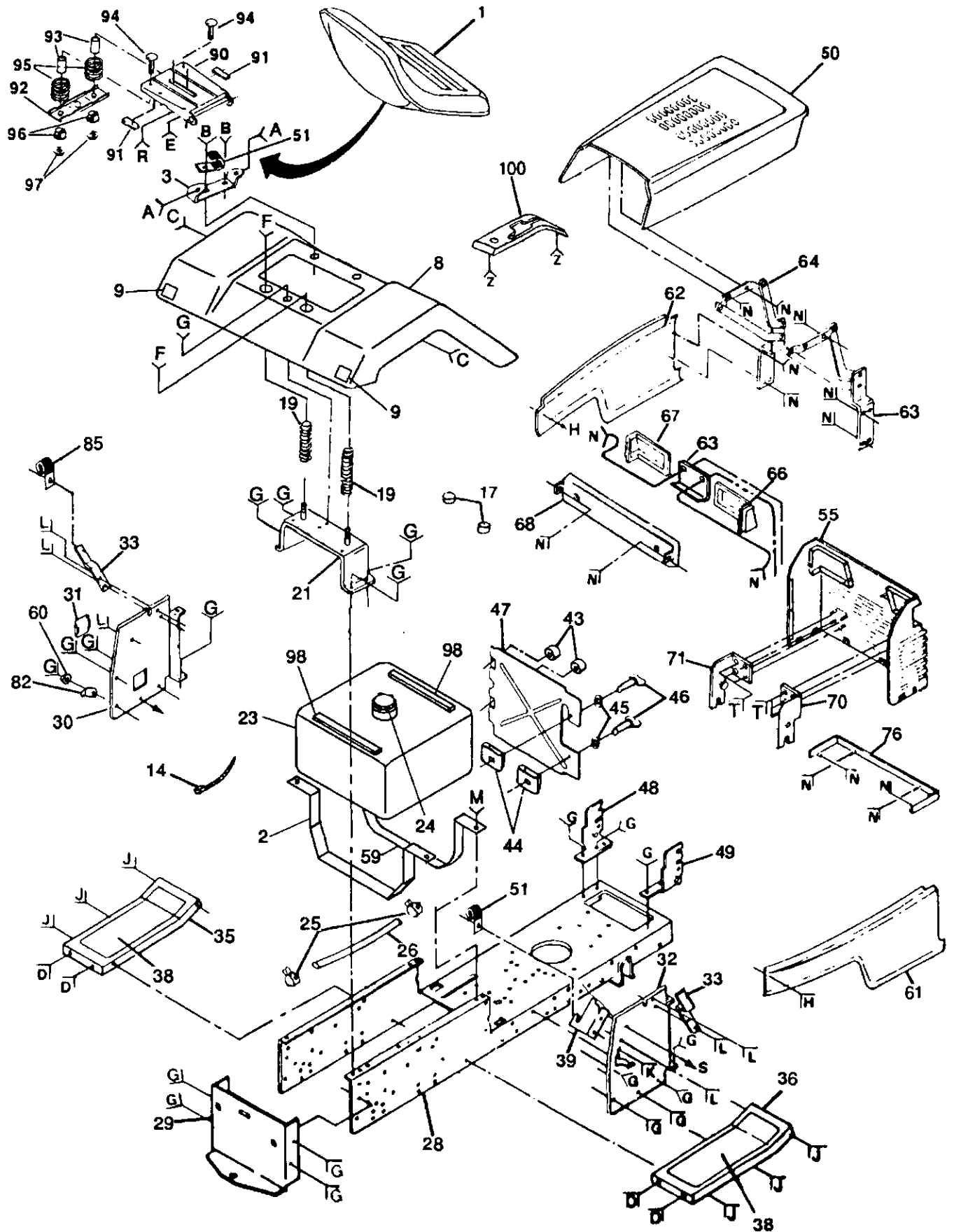
NOTE: All component dimensions given in U.S. inches.
1 inch = 25.4 mm



REPAIR PARTS

14 HP 38" RIDING LAWN TRACTOR - - MODEL NO. 917.255541

CHASSIS



REPAIR PARTS

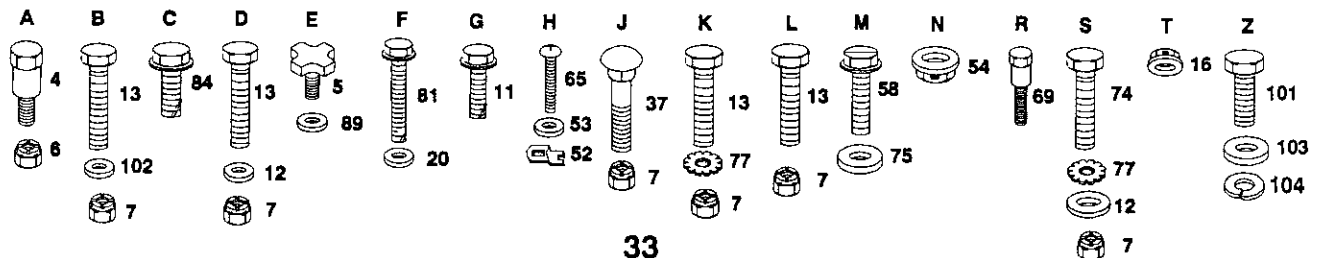
14 HP 38" RIDING LAWN TRACTOR - - MODEL NO. 917.255541

CHASSIS

KEY PART NO. NO.	DESCRIPTION	KEY PART NO. NO.	DESCRIPTION		
1	127438X	Seat	64	106090X	Hinge, L.H.
2	123803X	Strap, Fuel Tank, Back	65	106909X	Screw, Special
3	126656X	Bracket, Pivot, Seat	66	106003X	Lens, R.H.
4	105529X	Bolt, Shoulder 5/16-18	67	106004X	Lens, L.H.
5	120068X	Knob, Adjustment	68	110897X	Bezel, Headlight
6	73680500	Nut, Crownlock 5/16-18	69	127018X	Bolt, Shoulder
7	73680600	Nut, Crownlock 3/8-16	70	108512X	Bracket, Pivot, R.H.
8	126599X459	Fender	71	108513X	Bracket, Pivot, L.H.
9	106202X	Reflector, Rear	74	7476061	Bolt, Hex 3/8-16
11	17490612	Screw, Hex Washer Thd. Roll 3/8-16 X 3/4	75	STD551037	Washer 13/32 x 13/16 x 16 Ga.
12	19131312	Washer 13/32 x 13/16 x 12 Ga.	76	110350X459	Strap Assembly, Grill
13	STD523707	Bolt, Hex 3/8-16 x 3/4	77	11050600	Washer, Lock, External Tooth 3/8
14	7192J	Tie, Cable	81	17490616	Screw, Hex Washer Thd. Roll 3/8-16 x 1
16	120579X	Nut, Pal	82	123933X394	Pointer, Height Indicator
17	124238X	Cap, Spring	84	17490608	Screw, Hex Washer Thd. Roll 3/8 x 16 x 1/2
19	124181X	Spring, Compression	85	5320R	Clip, Insulated
20	19131614	Washer 13/32 x 1 x 14 Ga.	89	19171912	Washer 17/32 x 1-3/16 x 12 Ga.
21	109873X	Bracket, Fender	90	124294X	Pan, Seat
23	127813	Tank, Fuel	91	121251X	Strip, Foam
24	123549X	Cap, Fuel	92	121246X	Bracket, Switch Mount
25	123487X	Clamp, Hose	93	121249X	Spacer, Split
26	8543R	Line, Fuel	94	72170410	Bolt, Carriage 1/4-20 x 1-1/4
28	127213X	Assembly, Chassis	95	121250X	Spring, Compression
29	127866	Drawbar	96	121248X	Bushing, Snap
30	124118X	Panel, Dash, L.H.	97	123976X	Nut, Hex, Flange, Large
31	121794X	Cover, Access	98	126564X	Strip, Foam
32	110828X	Panel, Dash, R.H.	100	127271	Console, Shift
33	105525X	Bracket, Support, Dash	101	74760408	Bolt, Hex, Fin 1/4-20 UNC x 1/2
35	105465X459	Footrest, L.H.	102	19131210	Washer 13/32 x 3/4 x 10 Ga.
36	105464X459	Footrest, R.H.	103	19091216	Washer 9/32 x 3/4 x 16 Ga.
37	72140606	Bolt, Carriage 3/8-16 x 3/4	104	10040400	Washer, Lock Hvy. Helical 1/4
38	105466X	Pad, Footrest	—	128490	Decal, Hood, R.H.
39	110923X	Bracket, Clutch, Mower	—	128491	Decal, Hood, L.H.
43	110436X	Grommet, Split	—	128314	Decal (Fender)
44	105839X	Receptacle	—	127520	Decal, USA
45	105838X	Retainer	—	108428X	Decal, Speed/Deck, Size
46	123650X	Stud 1/4 Turn	—	105806X	Decal (Grill)
47	105867X	Shield, Heat	—	4900J	Decal, Clutch/Brake
48	109015X	Bracket, Pivot, L.H.	—	109199X	Decal, Drive Belt
49	109016X	Bracket, Pivot, R.H.	—	106813X	Decal, Stripe, Side Panel, L.H.
50	106013X459	Hood	—	106814X	Decal, Stripe, Side Panel, R.H.
51	2751R	Clip	—	106974X	Decal, Caution
52	108402X	U-Clip	—	108744X	Decal, Stripe, Hood R.H. Craft. II
53	106910X	Washer	—	108743X	Decal, Stripe, Hood L.H. Craft. II
54	108067X	Nut, Pal	—	128492	Decal, Side Panel
55	105528X	Grill	—	128258	Decal, Hood & Grill
58	17490608	Screw, Hex, Wsh. Thd. Roll. 3/8-16 x 1/2	—	130005	Decal, Stripe Grill
59	127530	Strap, Fuel Tank, Front			
60	120529X	Washer, Nylon .44 x .75 x .032			
61	108403X459	Panel, Side, R.H.			
62	108410X459	Panel, Side, L.H.			
63	106091X	Hinge, R.H.			

* STANDARD HARDWARE - PURCHASE LOCALLY

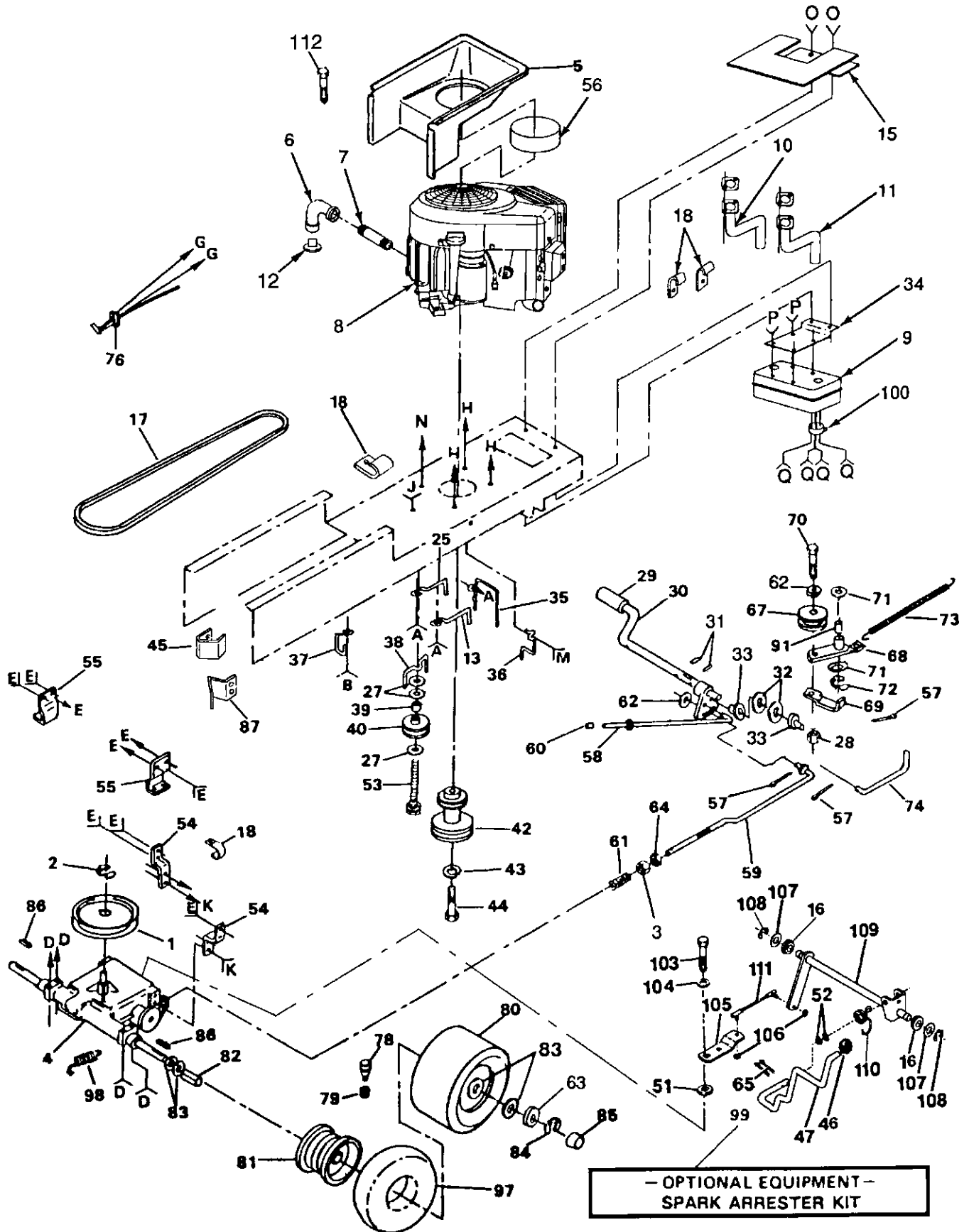
NOTE: All component dimensions given in U.S. inches.
1 inch = 25.4 mm



REPAIR PARTS

14 HP 38" RIDING LAWN TRACTOR -- MODEL NO. 917.255541

DRIVE



REPAIR PARTS

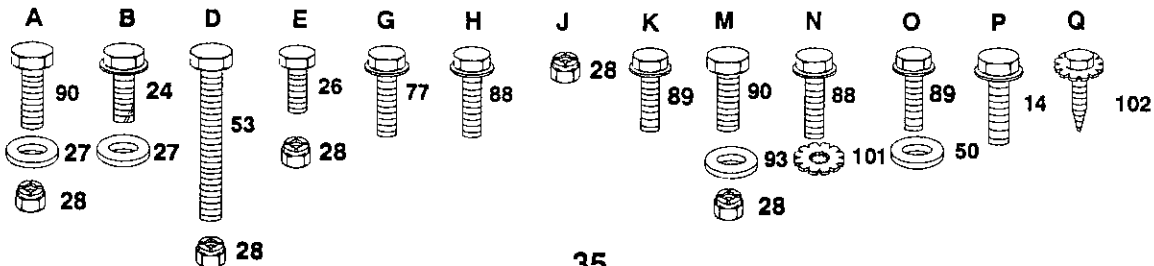
14 HP 38" RIDING LAWN TRACTOR - - MODEL NO. 917.255541

DRIVE

KEY NO.	PART NO.	DESCRIPTION	KEY NO.	PART NO.	DESCRIPTION
1	123666X	Pulley, Transaxle (Driven)	61	106888X	Spring, Rod, Brake
2	1200028	Ring, Retainer	62	19131316	Washer 13/32 x 13/16 x 16 Gauge
3	73800600	Nut, Hex, Lock W/Wsh. Insert 3/8-16	63	121748X	Washer 25/32 x 1-5/8 x 16 Gauge
4	120898X	Transaxle, 6 Speed, Dana Model No. 4360-7	64	73350600	Nut, Hex, Jam 3/8-16
5	105953X	Duct, Air Intake	65	STD561210	Pin, Cotter 1/8 x 1
6	13200300	Elbow, STD. 90° 3/8-18	67	127783	Pulley, Idler
7	13280336	Nipple, Pipe	68	123789X	Arm, Idler
8	131958	Engine, Vanguard, Briggs & Stratton Model No. 303777, Type No. 0332-01 or 0332-07	69	123205X	Retainer, Belt
9	122440X	Muffler	70	74760624	Bolt, Hex 3/8-16 x 1-1/2
10	122434X	Tube, Manifold, L.H.	71	110812X	Washer, Hardened
11	122435X	Tube, Manifold, R.H.	72	12000039	Ring, Klip
12	-----	Plug, Oil Drain (Order from Engine Mfg.)	73	105709X	Spring, Return, Clutch
13	105730X	Keeper, Belt Engine	74	105710X	Link, Clutch
14	17190408	Screw, Hex Wsh. Thd. Cut. 1/4-20	76	124559X	Control, Throttle
15	122981X	Shield, Heat	77	17720410	Screw, Hex Thd. Cut 1/4-20 x 5/8
16	127272X	Bushing, Rod, Steering	78	59192	Cap, Valve
17	125907X	V-Belt, Drive	79	65139	Stem, Valve
18	2751R	Clip	80	106268X	Tire, Rear
24	17490612	Screw, Hex Washer Hd. Thd. Roll. 3/8-16 x 3/4	81	106108X311	Rim,
25	121218X	Keeper, Belt, Engine	82	109502X	Spacer, Split
26	74760612	Bolt, Hex 3/8-16 x 3/4	83	121749X	Washer 25/32 x 1-1/4 x 16 Gauge
27	19131312	Washer 13/32 x 13/16 x 12 Gauge	84	12000001	E-Ring
28	73680600	Nut, Crownlock 3/8-16	85	104757X	Cap, Hub, Rear
29	8883R	Cover, Pedal	86	123583X	Key, Square 2.5 x .1845/.1865
30	122424X	Shaft, Foot Pedal	87	127274X	Keeper, Belt, R.H.
31	STD571810	Pin, Roll 3/16 x 1	88	17490624	Bolt, Hex Washer Thd. Roll. 3/8-16 x 1-1/2
32	STD551062	Washer 21/32 x 1 x 16 Gauge	89	17490512	Screw, Hex Washer Thd. Roll. 5/16-18 x 3/4
33	120183X	Bearing, Nylon	90	74760616	Bolt, Hex 3/8-16 x 1
34	122439X	Bracket, Muffler Mounting	91	105706X	Bearing
35	121440X	Guide, Belt, Lower, Engine Pulley, L.H.	93	19132012	Washer 13/32 x 1-1/4 x 12 Gauge
36	121441X	Guide, Belt, Lower, Engine Pulley, R.H.	97	7152J	Tube
37	104777X	Guide, Belt Retainer, Chassis	98	110422X	Spring, Brake Return
38	109070X	Keeper, Belt	99	121851X	Spark Arrester Kit
39	4470J	Spacer	100	101326L	Deflector, Muffler
40	123674X	Idler, Flat	101	11050600	Washer, Lock, Tooth 3/8
42	131002	Pulley, Engine	102	17030808	Screw, Hex, Spiderlock #8 x 1/2
43	10040700	Washer, Lock 7/16	103	71040412	Bolt, Hex 1/4-28 x 3/4
44	71130720	Bolt, Hex 7/16-20 x 1-1/4	104	STD551025	Washer 9/32 x 3/4 x 16 Gauge
45	127275X	Keeper, Belt, L.H.	105	123794X	Shift, Arm
46	106933X	Knob	106	73530400	Nut, Nylock 1/4-28
47	127270X	Rod, Shifter	107	126591X	Washer 21/32 x 1-1/4 x 16 Gauge
50	19131614	Washer 13/32 x 1 x 14 Gauge	108	12000003	Ring, Klip
51	105701X	Washer, Shift Plate	109	127273X	Shaft Assembly, Shifter
52	19171216	Washer 17/32 x 3/4 x 16 Gauge	110	123782X	Spring, Torsion
53	STD523727	Bolt, Hex 3/8-16 x 2-3/4	111	123793X	Rod, Tie
54	121520X	Strap, Torque	112	18011008	Screw, Self-Drilling
55	109167X	Bracket, Transaxle	—	131972	Decal, Engine
56	131733	Duct, Extension	—	125918X	Decal, Engine, B & S
57	76020412	Pin, Cotter 1/8 x 3/4	—	127781	Decal, Airduct, V-Twin, Engine
58	125637X	Rod, Brake, Park			
59	110437X	Rod, Brake			
60	124236X	Cap			

* STANDARD HARDWARE - PURCHASE LOCALLY

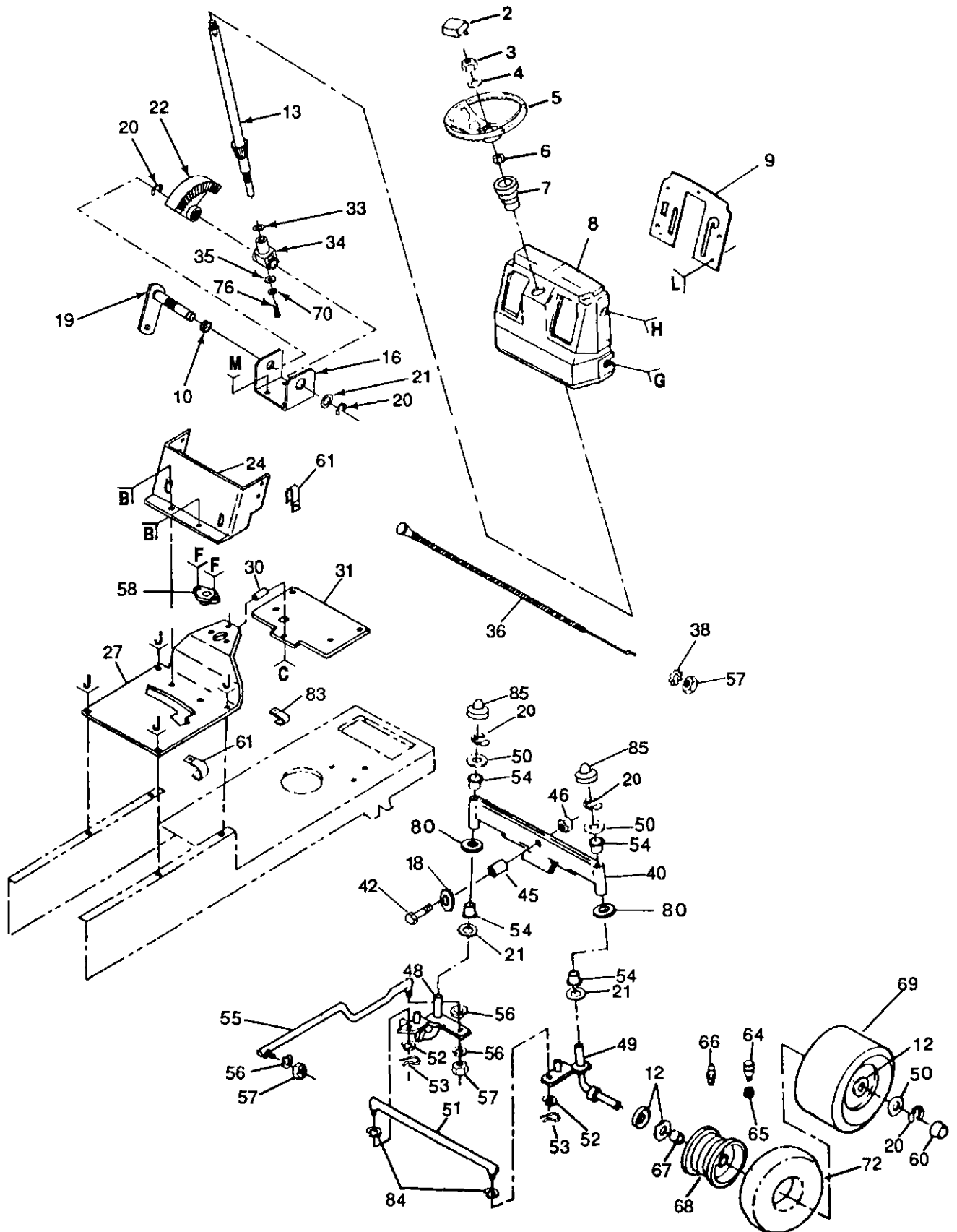
NOTE: All component dimensions given in U.S. inches.
1 inch = 25.4 mm



REPAIR PARTS

14 HP 38" RIDING LAWN TRACTOR - - MODEL NO. 917.255541

STEERING AND FRONT AXLE



REPAIR PARTS

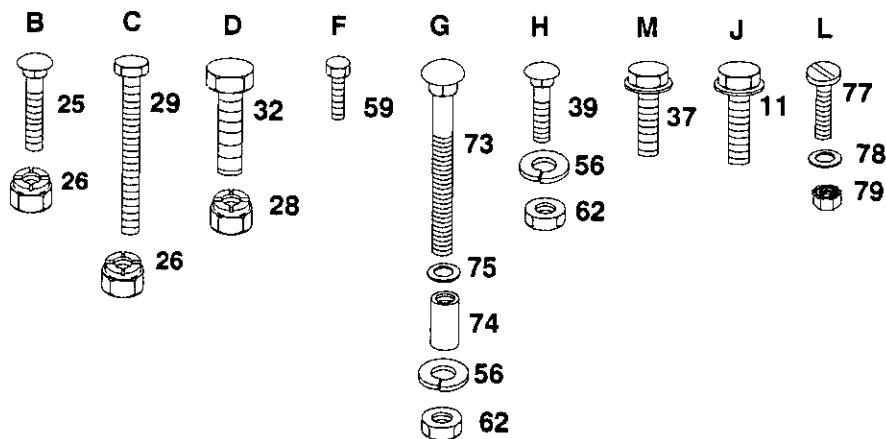
14 HP 38" RIDING LAWN TRACTOR - - MODEL NO. 917.255541

STEERING AND FRONT AXLE

KEY PART NO. NO.	DESCRIPTION	KEY PART NO. NO.	DESCRIPTION
2	126805X	Insert, Steering Wheel	
3	73940800	Nut, Top Lock 1/2-20 UNF	
4	100712K	Washer	
5	121472X	Wheel, Steering	
6	100711L	Adapter, Steering Wheel	
7	110709X	Sleeve, Steering	
8	120028X	Dash	
9	129630X011	Dash Plate	
10	109816X	Nyliner, Snap-In	
11	17490608	Screw, Hex Washer Thd. Roll. 3/8-16 x 1/2	
12	121749X	Washer 25/32 x 1-1/4 x 16 Gauge	
13	128755	Shaft, Steering	
16	124036X	Bracket, Steering	
18	19212010	Washer 21/32 x 1-1/4 x 10 Gauge	
19	127501X	Shaft, Pitman	
20	12000029	Ring, Klip	
21	6266H	Bearing, Thrust	
22	124034X	Gear, Sector	
24	105518X	Dash, Lower	
25	74180512	Screw, Crown Truss Hd. 5/16-18 x 3/4	
26	73680500	Nut, Crownlock 5/16-18	
27	127543X011	Saddle	
28	73680600	Nut, Crownlock 3/8-16	
29	STD523120	* Bolt, Hex 5/16-18 x 2	
30	121236X	Spacer	
31	128231	Support Plate, Battery	
32	STD523707	* Bolt, Hex 3/8-16 x 3/4	
33	57079	Washer	
34	124035X	Support, Shaft	
35	126684X	Washer 5/8 x 1/4 x 16 Gauge	
36	126540X	Control, Choke	
37	17490612	Screw, Hex Wsh. Thd. Roll. 3/8-16 x 3/4	
38	11050600	Washer, Lock, Int./External Tooth 3/8	
39	72110608	Bolt, Carriage	
40	105669X	Axle, Front	
42	74761060	Bolt, Hex 5/8-11 x 3-3/4	
45	110438X	Spacer, Bearing, Front Axle	
46	73601000	Locknut, Flange 5/8-11	
48	105656X	Spindle, L.H.	
49	130524	Spindle, R.H.	
50	121748X	Washer 25/32 x 1-5/8 x 16 Gauge	
51	105715X	Rod, Tie	
52	19131416	Washer 13/32 x 7/8 x 16 Gauge	
53	STD561210	* Pin, Cotter 1/8 x 3/4	
54	3366R	Bearing	
55	128122	Link, Drag	
56	STD551137	* Washer, Lock 3/8	
57	STD541137	* Nut, Hex 3/8-24	
58	1554J	Bushing, Steering	
59	17431008	Screw, Hex #10-16 x 1/2	
60	104757X	Cap, Hub, Front	
61	2751R	Clip, Fuel Line	
62	STD541037	* Nut, Hex 3/8-16	
64	59192	Cap, Valve	
65	65139	Stem, Valve	
66	278H	Fitting, Grease	
67	9040H	Bearing	
68	106732X311	Rim,	
69	106222X	Tire, Front	
70	STD551125	* Washer, Lock 1/4	
72	59904	Tube, Tire, Front	
73	72110622	Bolt, Carriage, Hex 3/8-16 x 2-3/4	
74	121235X	Spacer	
75	19131416	Washer 13/32 x 7/8 x 16 Gauge	
76	71070410	Screw, Hex, Socket, 1/4 x 20 x 5/8	
77	STD512507	* Screw, Pan Head 1/4-20 x 3/4	
78	19091216	Washer 13/32 x 3/4 x 16 Gauge	
79	73510400	Nut, Keps 1/4 UNC	
80	19272016	Washer 27/32 x 1-1/4 x 16 Gauge	
83	5320R	Clip, Insulated	
84	120754X	Bushing	
85	121232X	Cap, Spindle	
--	128315	Decal, Cap, Steering Wheel	
--	108456X	Decal, Operating Instruction, Dash	

* STANDARD HARDWARE - PURCHASE LOCALLY

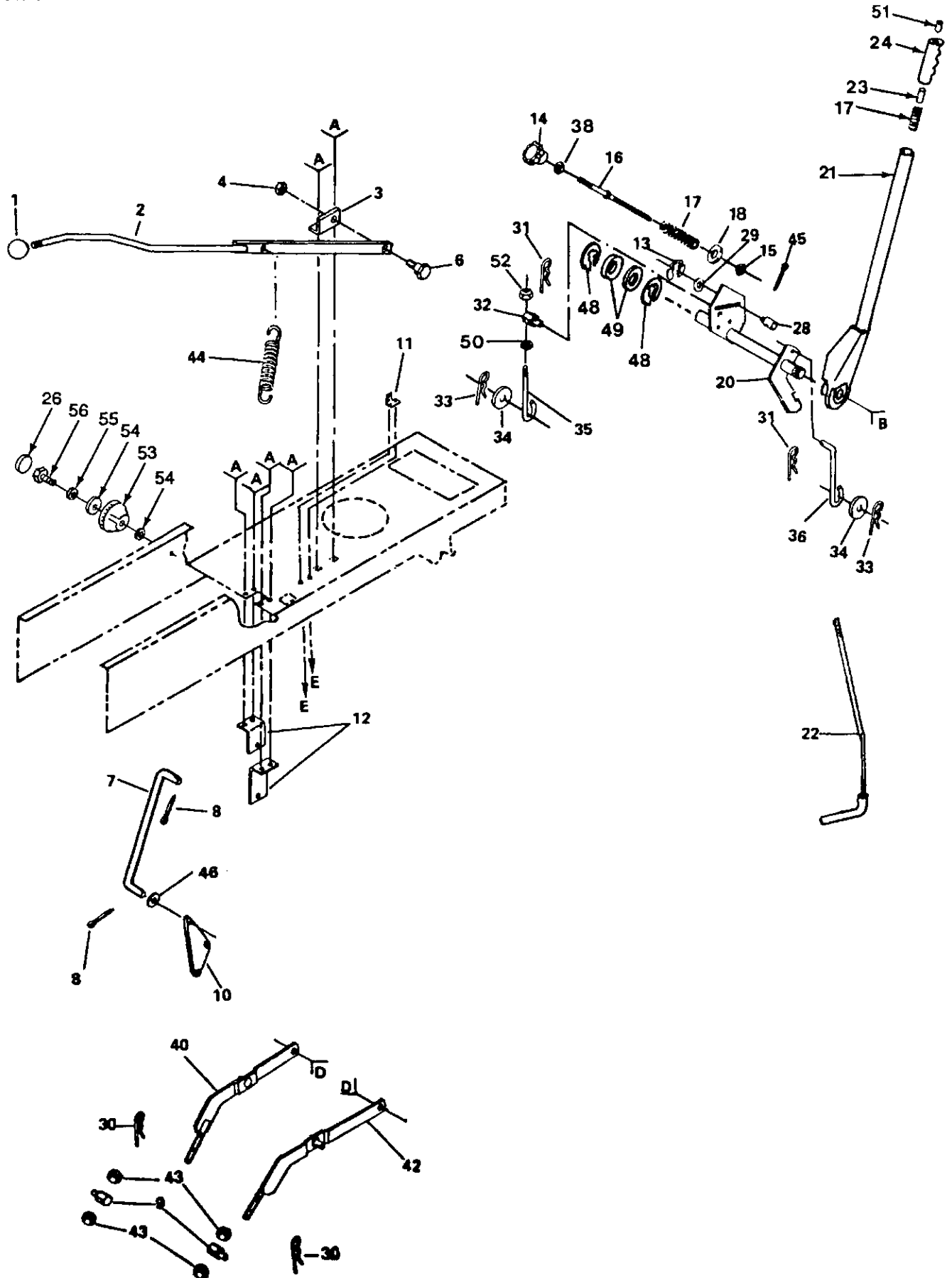
NOTE: All component dimensions given in U.S. inches.
1 inch = 25.4 mm



REPAIR PARTS

14 HP 38" RIDING LAWN TRACTOR - - MODEL NO. 917.255541

LIFT ADJUSTMENT



REPAIR PARTS

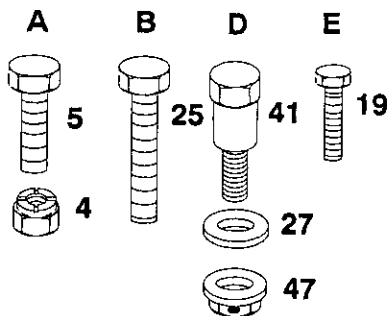
14 HP 38" RIDING LAWN TRACTOR - - MODEL NO. 917.255541

LIFT ADJUSTMENT

KEY PART NO. NO.	DESCRIPTION	KEY PART NO. NO.	DESCRIPTION
1 106933X	Knob	31 4939M	Retainer, Spring
2 125916X	Lever, Mower, Clutch	32 110447X	Trunnion, Lift
3 125914X	Bracket, Pivot	33 4921H	Retainer, Spring
4 73680600	Nut, Crownlock 3/8-16	34 19171516	Washer 17/32 x 5/16 x 16 Gauge
5 STD523707 *	Bolt, Hex 3/8-16 x 3/4	35 110448X	Link, Lift, Adjust
6 106451X	Bolt, Shoulder	36 110029X	Link, Lift
7 108387X	Rod, Clutch, Primary	38 STD541237 *	Nut, Jam 3/8-16
8 76020412	Pin, Cotter 1/8 x 3/4	40 121599X	Arm, Suspension, L.H.
9 106308X	Trunnion, Lift, Lower	41 105848X	Bolt, Shoulder 3/8-16
10 109728X	Bellcrank	42 121598X	Arm, Suspension, R.H.
11 108236X	Bracket, Switch	43 STD541050 *	Nut, Hex, Fin 1/2-13
12 106444X	Bracket, Bellcrank	44 58606	Spring
13 12000037	Ring, Klip	45 76020308	Pin, Cotter 3/32 x 1/2
14 100734K	Knob, Height Adjustment	46 19131410	Washer 13/32 x 7/8 x 10 Gauge
15 110807X	Nut, Special	47 73980600	Nut, Flangelock 3/8-16
16 110729X	Rod, Adjust, Lift	48 12000022	E-Ring
17 2876H	Spring	49 19292016	Washer 29/32 x 1-1/4 x 16 Gauge
18 STD551037 *	Washer 13/32 x 5/8 x 16 Gauge	50 73360700	Nut, Hex, Jam 7/16 x 20
19 17021008	Screw, Hex Hd. Tap. #10-24 x 1/2	51 122365X	Button, Plunger
20 124516X	Shaft, Lift	52 73710700	Nut, Crownlock, Jam 7/16 x 20
21 121002X	Lever, Lift (Inc. Key No. 22)	53 123934X	Scale, Height Indicator
22 121006X	Rod, Lever	54 19112410	Washer 11/32 x 1-1/2 x 10 Gauge
23 122364X	Plunger, Lever	55 STD551131 *	Washer, Lock Hvy. Helical Spring
24 125631X	Grip, Handle	56 74780516	Bolt, Hex, Fin 5/16-18 x 1
25 STD523715 *	Bolt 3/8-16 x 1-1/2		
26 123935X	Plug, Hole		
27 110739X	Washer, Spring 3/8		
28 110810X	Trunnion, Stop Depth		
29 19151216	Washer 15/32 x 3/4 x 16 Gauge		
30 9135R	Retainer, Spring		

* STANDARD HARDWARE - PURCHASE LOCALLY

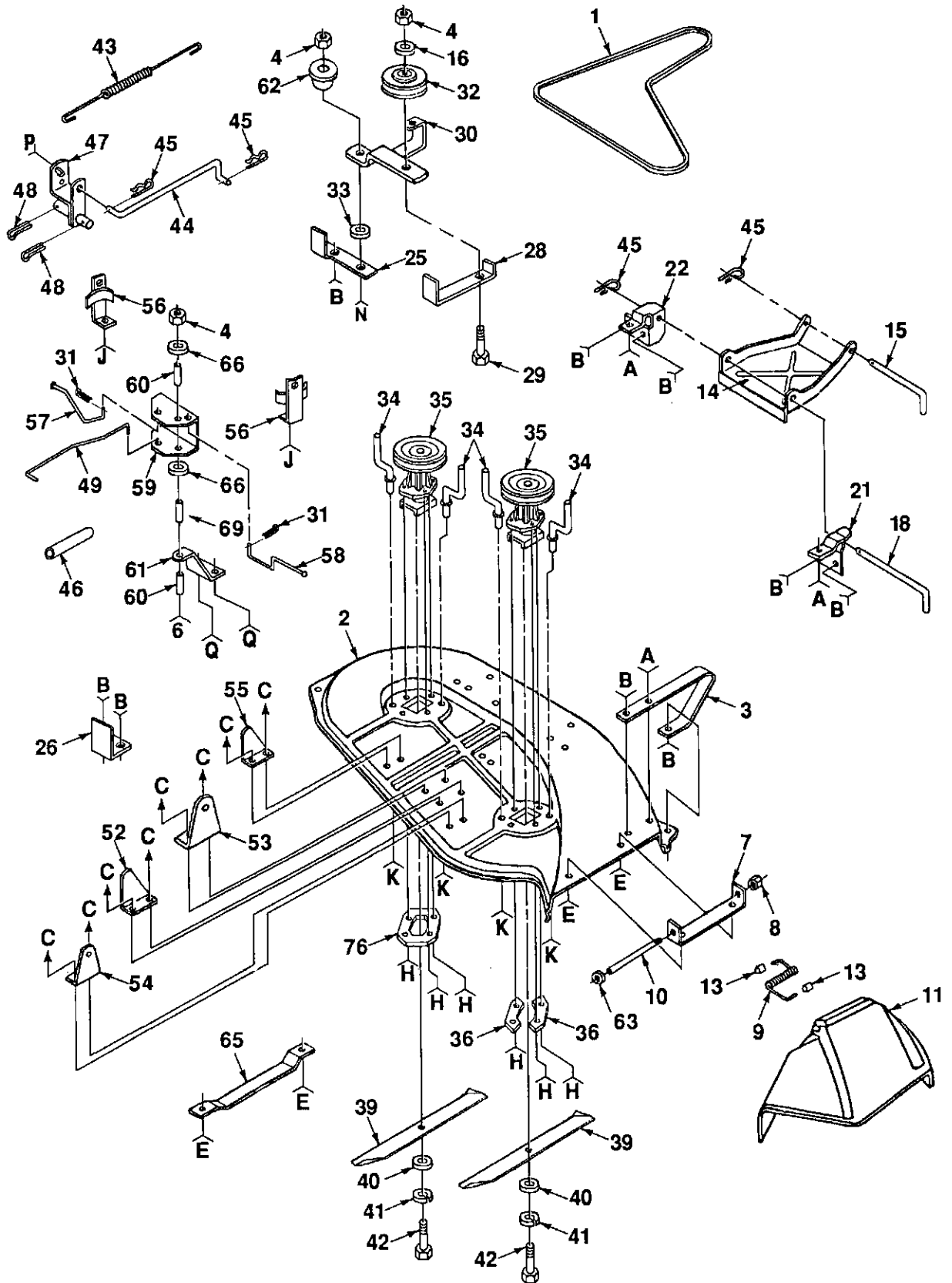
NOTE: All component dimensions given in U.S. inches.
1 inch = 25.4 mm



REPAIR PARTS

14 HP 38" RIDING LAWN TRACTOR - - MODEL NO. 917.255541

MOWER



REPAIR PARTS

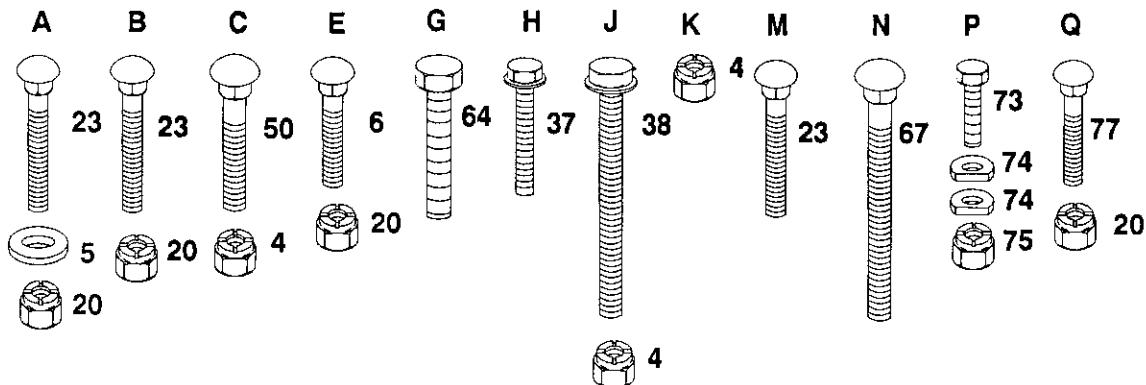
14 HP 38" RIDING LAWN TRACTOR - - MODEL NO. 917.255541

MOWER

KEY PART NO. NO.	DESCRIPTION	KEY PART NO. NO.	DESCRIPTION
1	106085X V-Belt	43	108250X Spring, Extension
2	121259X Housing	44	108235X Rod, Clutch, Mower
3	128772 Runner, R.H.	45	4921H Spring, Retainer
4	73680600 Nut, Crownlock 3/8-16	46	6404J Spacer 1/2 x 9/16
5	19111216 Washer 11/32 x 3/4 x 16 Ga.	47	124066X Rock, Shaft, Assembly
6	72140505 Bolt, Carriage 5/16-18 x 5/8	48	76020616 Pin, Cotter 3/16 x 1
7	105896X Bracket, Deflector	49	108247X Rod, Brake, Primary
8	110452X Nut, Push	50	STD533707 Bolt, Carriage 3/8-16 x 3/4
9	106734X Spring, Deflector	52	108243X Bracket, Pivot, R.H.
10	106735X Rod, Hinge	53	108241X Bracket, Pivot, L.H.
11	106736X Deflector, Shield	54	105857X Bracket, Suspension, Rear, R.H.
13	105304X Cap	55	108673X Bracket, Suspension, Rear, L.H.
14	129762 Link, Parallel	56	106578X Brake Assembly
15	105744X Pin, Hinge, Front	57	106463X Rod, Brake, Secondary, L.H.
16	STD551037 *Washer 13/32 x 13/16 x 16 Ga.	58	108249X Rod, Brake, Secondary, R.H.
18	109835X Pin, Hinge, Rear	59	106456X Bracket, Brake, Pivot
20	73680500 Nut, Crownlock 5/16-18	60	100672K Spacer, Brake
21	109598X Bracket, Lift, R.H.	61	100673L Bracket, Support
22	109597X Bracket, Lift, L.H.	62	106513X Washer, Wear
23	STD533107 *Bolt, Carriage 5/16-18 x 3/4	63	19111016 Washer 11/32 x 5/8 x 16 Ga.
25	109503X Support, Arm	64	74760688 Bolt, Hex 3/8-16 x 5-1/2
26	109504X Stop, Deck, Front	65	7631J Runner, L.H.
28	126756X Guide, Belt	66	19131614 Washer 13/32 x 1 x 14 Ga.
29	STD523720 *Bolt, Hex 3/8-16 x 2	67	72140610 Bolt, Carriage 3/8-16 x 1-1/4
30	127163X Arm, Idler	69	122314X Spacer, Split
31	76020308 Pin, Cotter	73	74760412 Bolt, Hex 1/4-20 x 3/4
32	123688X Pulley, Idler	74	109893X Washer, Special
33	106902X Spacer, Retainer	75	73680400 Nut 1/4-20
34	102669X Keeper, Belt	76	110445X Plate, Support, L.H., Mandrel
35	121687X Mandrel Assembly	77	72110506 Bolt, Carriage 5/16-18 x 16 Ga.
36	100668L Plate, Support, Mandrel	—	122215X Mower Assembly Complete
37	17490614 Screw, Hex Washer Hd. 3/8-16 x 3/4	—	105814X Decal (Mower, Housing)
38	17490620 Screw, Hex Washer Hd. 3/8-16 x 1-1/4	—	121343X Decal, Warning (Mower, Housing)
39	121263X Blade, 38"	—	3713J Decal, Rotating Blades
40	19132012 Washer 13/32 x 1-1/4 x 12 Ga.		
41	STD551137 *Washer, Lock 3/8		
42	STD632715 *Bolt, Hex 3/8-24 x 1-1/2 Grade 5		

* STANDARD HARDWARE - PURCHASE LOCALLY

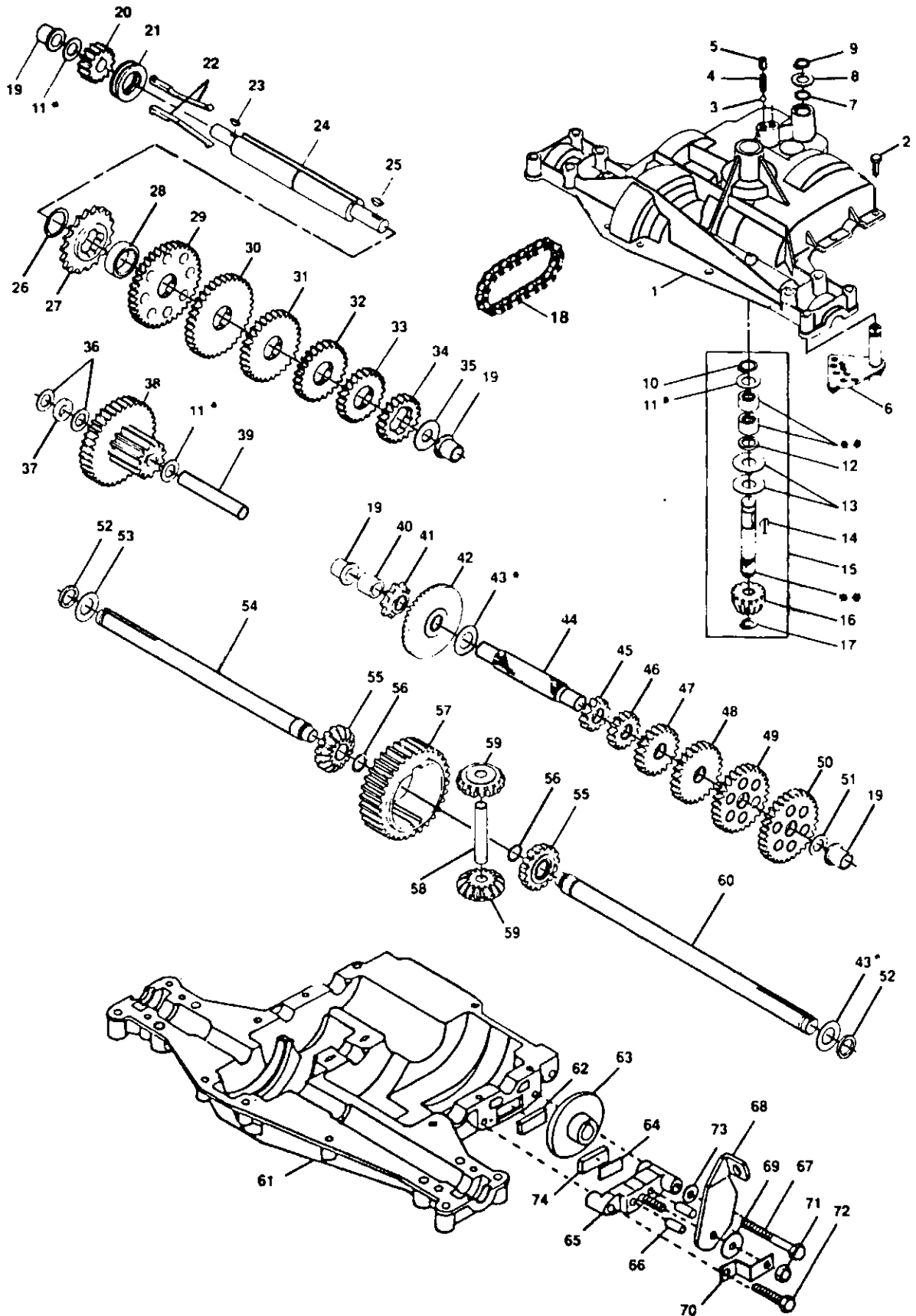
NOTE: All component dimensions given in U.S. inches.
1 inch = 25.4 mm



REPAIR PARTS

14 HP 38" RIDING LAWN TRACTOR - - MODEL NO. 917.255541
TRANSAXLE FOOTE-DANA - - MODEL NO. 4360-7

TRANSAXLE



REPAIR PARTS

14 HP 38" RIDING LAWN TRACTOR - - MODEL NO. 917.255541 TRANSAXLE FOOTE-DANA - - MODEL NO. 4360-7

TRANSAXLE

KEY PART NO. NO.	DESCRIPTION	KEY PART NO. NO.	DESCRIPTION
1 120458X	Housing, Upper	40 120472X	Spacer .635 x .875 x .755
2 2274J	Screw, Tapping, Lg. 1/4-20 x .734	41 105928X	Sprocket, 9 Teeth
3 68003	Ball, Detent	42 110084X	Gear, Bevel, 42 Teeth
4 105904X	Spring, Detent	43 108983X	*Washer, Plain .758 x 1.12 x .010
5 105905X	Screw, Set	43 105930X	*Washer, Plain .758 x 1.12 x .015
6 120460X	Assembly, Shifter	43 105931X	*Washer, Plain .758 x 1.12 x .020
7 120461X	O-Ring	43 105932X	*Washer, Plain .758 x 1.12 x .025
8 120462X	*Washer, Plain .505 x .942 x .006	43 3417J	*Washer, Plain .758 x 1.25 x .020
8 120463X	*Washer, Plain .505 x .942 x .010	43 106097X	*Washer, Plain .758 x 1.25 x .025
8 120464X	*Washer, Plain .505 x .942 x .015	43 2264J	*Washer, Plain .758 x 1.25 x .031
8 120465X	*Washer, Plain .505 x .942 x .020	43 106098X	*Washer, Plain .758 x 1.25 x .035
8 120466X	*Washer, Plain .505 x .942 x .026	43 2265J	*Washer, Plain .758 x 1.25 x .040
8 83818	*Washer, Plain .505 x .942 x .030	43 106586X	*Washer, Plain .758 x 1.25 x .045
8 120467X	*Washer, Plain .505 x .942 x .040	43 106587X	*Washer, Plain .758 x 1.25 x .050
9 2286J	Ring, Retaining	43 106588X	*Washer, Plain .758 x 1.25 x .055
10 2267J	Ring, Retaining	43 2263J	*Washer, Plain .758 x 1.25 x .062
11 3413J	*Washer, Plain .632 x 1.00 x .010	44 120473X	Shaft, Drive
11 2233J	*Washer, Plain .632 x 1.00 x .020	45 105933X	Gear, Spur, 12 Teeth
11 2232J	*Washer, Plain .632 x 1.00 x .026	46 106151X	Gear, Spur, 15 Teeth
11 2231J	*Washer, Plain .632 x 1.00 x .031	47 120407X	Gear, Spur, 20 Teeth
11 2230J	*Washer, Plain .632 x 1.00 x .036	48 106589X	Gear, Spur, 25 Teeth
11 2229J	*Washer, Plain .632 x 1.00 x .041	49 120408X	Gear, Spur, 28 Teeth
11 2228J	*Washer, Plain .632 x 1.00 x .046	50 105937X	Gear, Spur, 31 Teeth
11 2227J	*Washer, Plain .632 x 1.00 x .050	51 2226J	Washer, Plain .632 x 1.00 x .060
11 2226J	*Washer, Plain .632 x 1.00 x .060	52 2272J	Seal, Felt
11 105906X	*Washer, Plain .632 x 1.00 x .082	53 2263J	Washer, Plain .758 x 1.25 x .062
12 6725J	O-Ring	54 120474X	Axle, L.H.
13 120415X	Washer, Plain .632 x 1.38 x .046	55 110081X	Gear, Miter, 15 Teeth
14 2257J	Key, Woodruff #9	56 105941X	Ring, Retaining
15 110077X	Assembly, Kit, Input Shaft	57 110071X	Gear, Spur, 32 Teeth
16 110078X	Pinion, Bevel, 14 Teeth	58 120952X	Shaft, Cross
17 105909X	Ring, Retaining	59 110082X	Gear, Miter, 15 Teeth
18 105910X	Chain, 24 Pitches	60 120475X	Axle, R.H.
19 105911X	Bearing, Flange	61 120476X	Housing, Lower
20 108976X	Gear, Spur, 14 Teeth	62 120961X	Puck, Friction
21 105913X	Collar, Clutch	63 7294J	Disc, Brake
22 120468X	Key, Clutch	64 108989X	Spacer
23 2242J	Key, Woodruff	65 120953X	Jaw, Brake
24 120469X	Shaft, Intermediate	66 120954X	Pin, Dowel
25 2244J	Key, Woodruff #61	67 120955X	Screw, Tapping, Lg. 5/16-18 x 2.25
26 105916X	Ring, Retaining	68 108992X	Lever, Actuating
27 120470X	Sprocket, 18 Teeth	69 108996X	Washer, Plain .321 x 1.00 x .055
28 110070X	Spacer	70 120956X	Bracket, Anti-Rotation
29 108977X	Gear, Spur, 37 Teeth	71 73810500	Locknut 5/16-24
30 109254X	Gear, Spur, 35 Teeth	72 106596X	Screw, Tapping, Lg. 5/16-18 x 1.44
31 120405X	Gear, Spur, 30 Teeth	73 120993X	Washer, Plain .343 x .81 x .059
32 108980X	Gear, Spur, 25 Teeth	74 120951X	Puck, Friction
33 120406X	Gear, Spur, 22 Teeth	75 120416X	Grease
34 108455X	Gear, Spur, 19 Teeth		
35 105925X	Washer, Plain .640 x 1.37 x .061		
36 2232J	Washer, Plain .632 x 1.00 x .026		
37 108978X	Spacer .630 x 1.00 x .169		
38 110079X	Assembly, Gear, Combination 12 Teeth and 35 Teeth		
39 120471X	Shaft, Idler		

*Use in various combinations to maintain proper clearances.

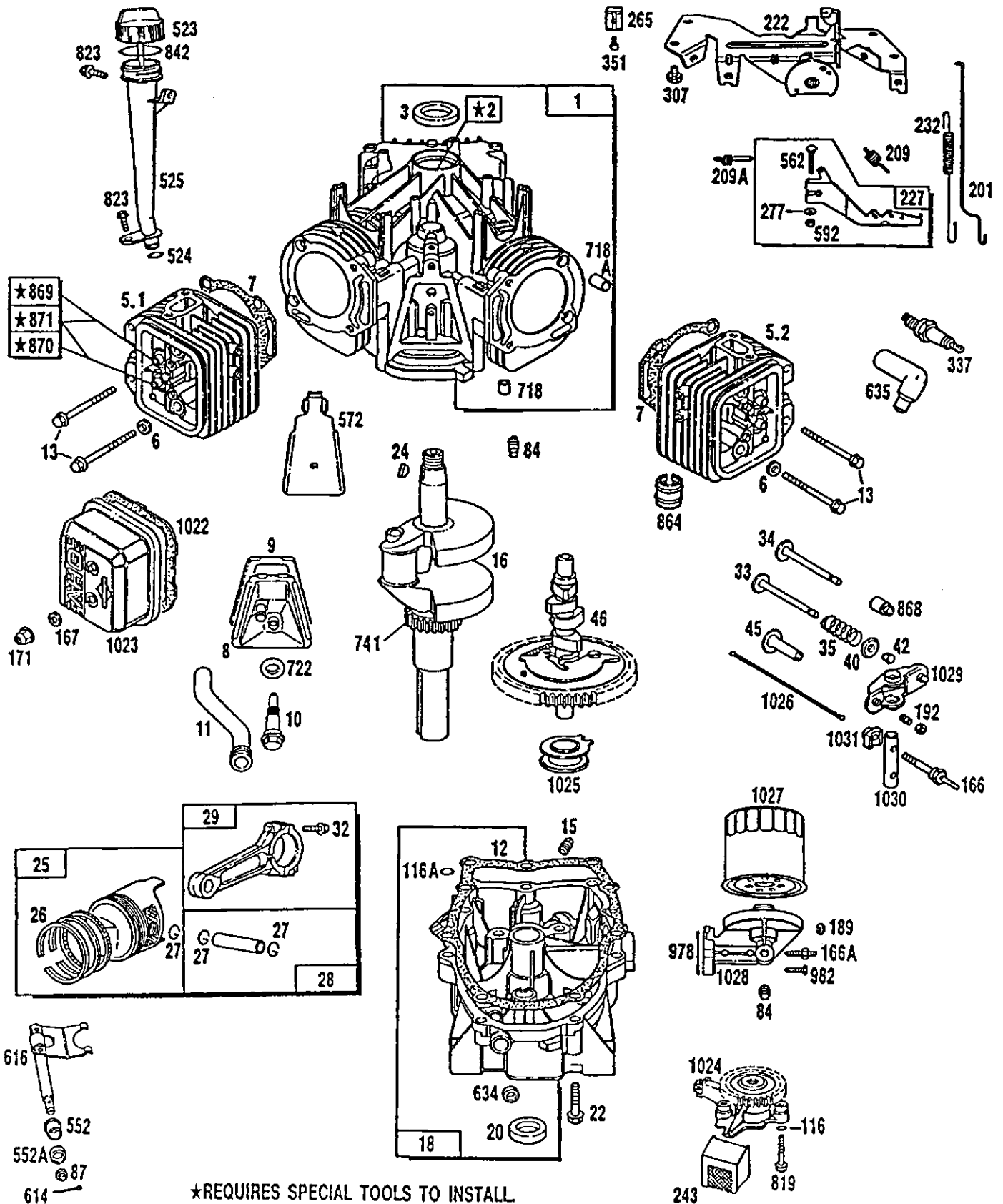
**Order Key Number 15.

NOTE: All component dimensions given in U.S. inches
1 inch = 25.4 mm

REPAIR PARTS

14 HP 38" RIDING TRACTOR -- MODEL NUMBER 917.255541

ENGINE BRIGGS & STRATTON -- MODEL NUMBER 303777, TYPE NUMBER 0332-01 AND 0332-07

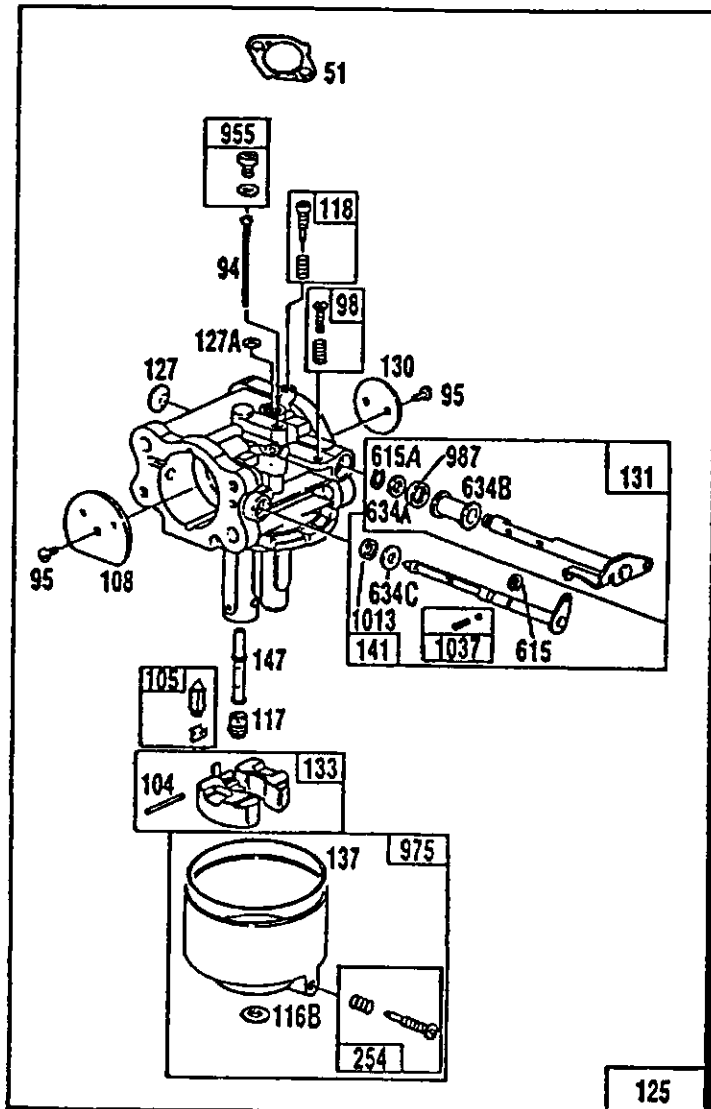


*REQUIRES SPECIAL TOOLS TO INSTALL
SEE REPAIR INSTRUCTION MANUAL

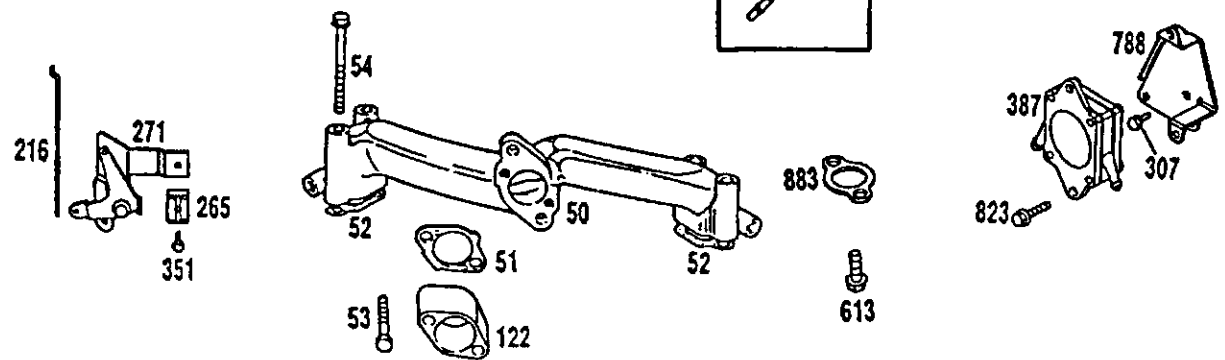
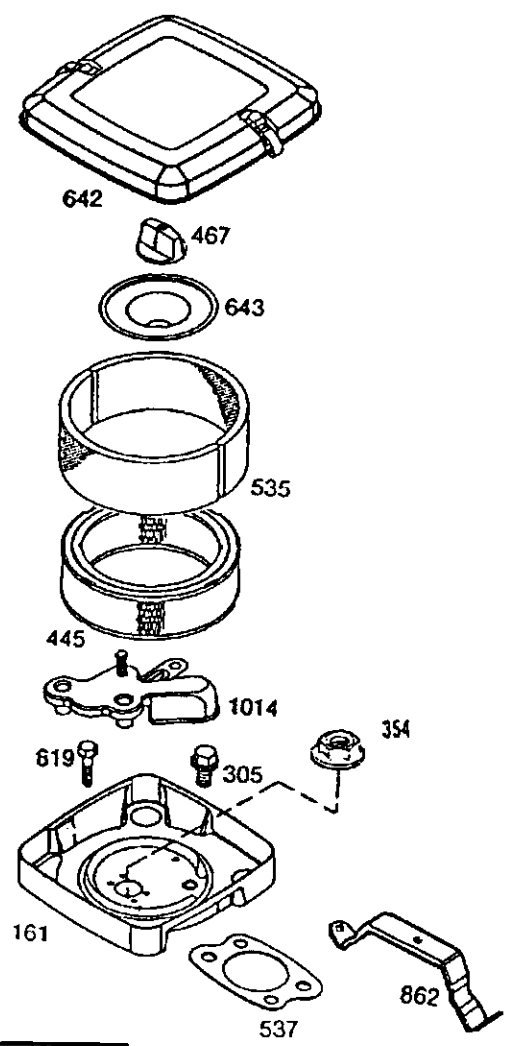
REPAIR PARTS

14 HP 38" RIDING TRACTOR -- MODEL NUMBER 917.255541

ENGINE BRIGGS & STRATTON -- MODEL NUMBER 303777, TYPE NUMBER 0332-01 AND 0332-07



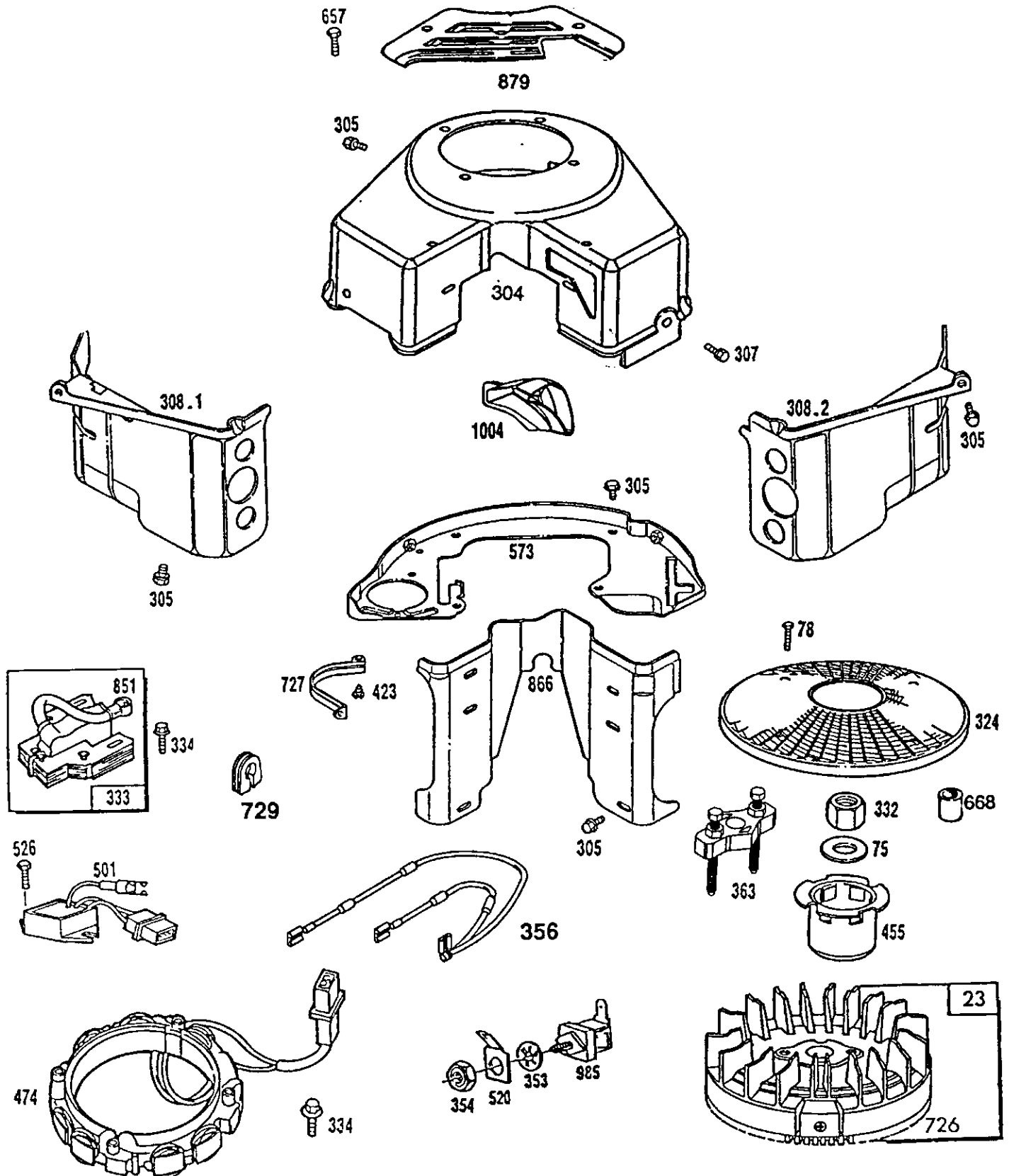
977 CARBURETOR GASKET SET
 121 CARBURETOR OVERHAUL KIT



REPAIR PARTS

14 HP 38" RIDING TRACTOR -- MODEL NUMBER 917.255541

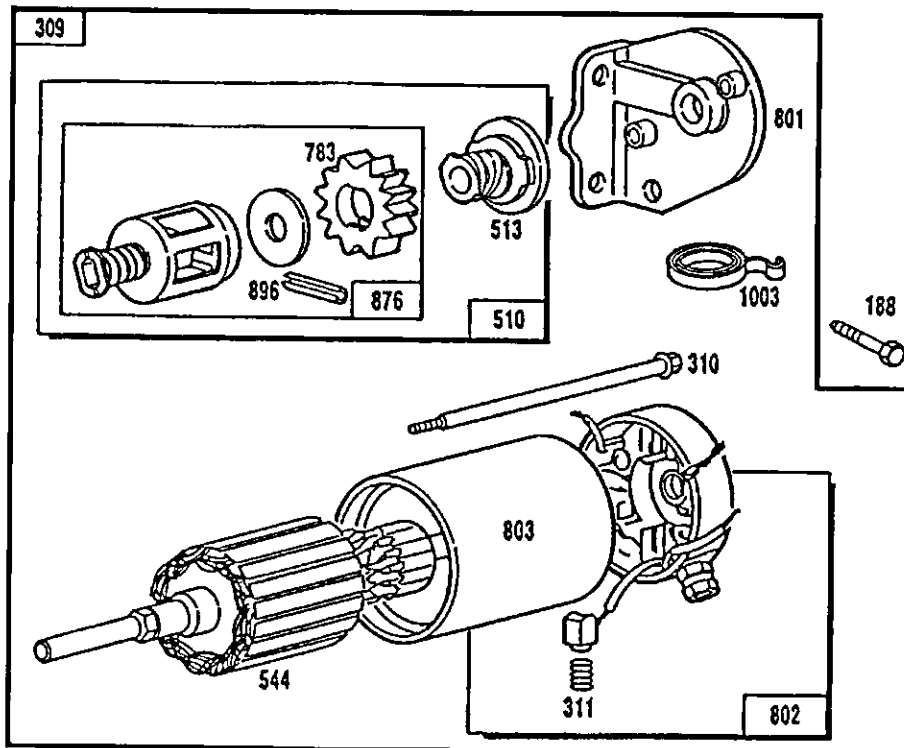
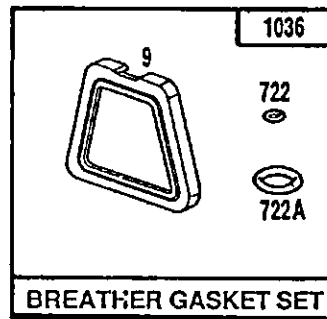
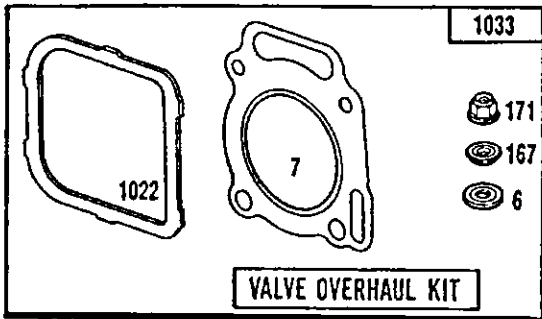
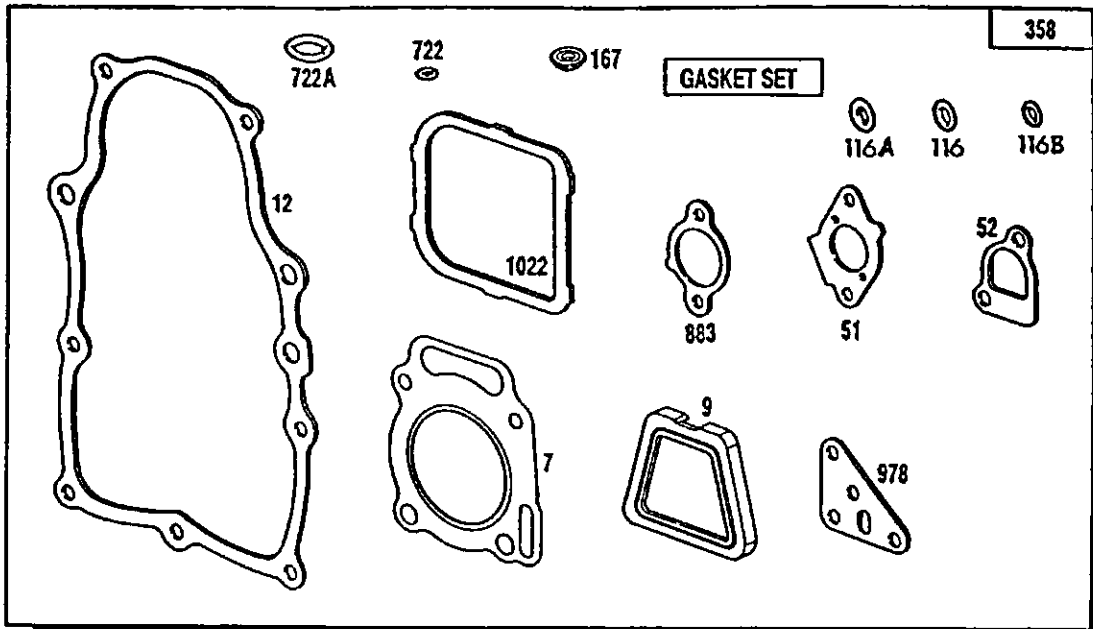
ENGINE BRIGGS & STRATTON -- MODEL NUMBER 303777, TYPE NUMBER 0332-01 AND 0332-07



REPAIR PARTS

14 HP 38" RIDING TRACTOR -- MODEL NUMBER 917.255541

ENGINE BRIGGS & STRATTON -- MODEL NUMBER 303777, TYPE NUMBER 0332-01 AND 0332-07



REPAIR PARTS

14 HP 38" RIDING TRACTOR -- MODEL NUMBER 917.255541

ENGINE BRIGGS & STRATTON -- MODEL NUMBER 303777, TYPE NUMBER 0332-01 AND 0332-07

KEY NO.	PART NO.	DESCRIPTION	KEY NO.	PART NO.	DESCRIPTION
1	807511	Cylinder Assembly	116A	805198	* O-Ring, Crankcase Cover
2	805107	Bearing, Cylinder	116B	---	**** Gasket, Sealing (Sold in Kit)
3	805101	Seal, Oil	117	---	** Jet, Main (Sold in Kit and Key #147)
5.1	807508	Head, Cylinder #1	118	807707	** Valve Assembly, Carburetor Idle
5.2	807510	Head, Cylinder #2	121	807962	Carburetor Overhaul Kit
6	805193	*** Washer, Cylinder Head	122	805329	Spacer, Carburetor
7	805111	* Gasket, Cylinder Head (also Included in Valve Overhaul Kit, Part Number 807716)	125	807961	Carburetor Assembly
8	807795	Breather Assembly	127	805570	** Plug, Welch
9	805379	* Gasket, Breather	127A	805571	** Plug, Welch
10	805751	Screw	130	805572	Valve, Throttle
11	805362	Tube, Breather	131	807709	Shaft, Throttle
12	805112	Gasket, Crankcase Cover	133	807710	Float Assembly, Carburetor
13	805097	Screw, Cylinder Head	137	---	** Gasket, Float Bowl (also included in Carburetor Gasket Set, Part Number 807716)
15	805048	Plug, Oil Drain	141	807711	Shaft, Choke
16	807586	Crankshaft	147	807960	** Nozzle
	94196	Key, Timing Gear	156	805343	Stud, Rocker Arm
	807625	Washers, Thrust	161	807857	Base Assembly, Air Cleaner
18	807638	Cover Assembly, Crankcase	166A	805073	Stud, Oil Filter Adapter
20	805049	Seal, Oil	167	805420	*** Washer, Valve Cover
22	805017	Screw, Crankcase Cover	171	805019	*** Nut, Nylock
23	807531	Flywheel, Magneto	187	393815	Hose, Fuel, 11" (Cut to Suit)
24	805016	Key, Flywheel		296004	Hose, Fuel, 23" (Cut to Suit)
25	807619	Piston Assembly, Standard	188	805247	Screw, Starter Mounting
	807807	Piston Assembly .010" Oversize	189	805449	Lock Washer
	807809	Piston Assembly .020" Oversize	192	807623	Screw, Valve Adjustment (Includes Jam Nut)
	807811	Piston Assembly .030" Oversize	201	805480	Link, Governor
26	807620	Ring Set, Piston, Standard	209	805462	Spring, Governor
	807808	Ring Set, Piston .010" Oversize	209A	805453	Spring, Governed Idle
	807810	Ring Set, Piston .020" Oversize	216	805439	Link, Choke
	807812	Ring Set, Piston .030" Oversize	222	807610	Bracket, Governor Control
27	805099	Lock, Piston Pin	227	807528	Lever Assembly, Governor
28	807621	Pin Assembly, Piston, Standard	232	805465	Spring, Governor Link
29	807622	Rod Assembly, Connecting	240	394358	Finer, Fuel
32	805395	Screw, Connecting Rod	243	805312	Screen, Oil
33	805089	Valve, Exhaust	254	807713	Drain, Carburetor Bowl
34	805090	Valve, Intake	265	221535	Clamp, Casing
35	805078	Spring, Valve	271	807609	Bracket, Choke Control
40	805092	Retainer, Valve Spring	277	805018	Washer
42	805161	Retainer, Valve	304	807899	Housing, Blower
45	805354	Tappet, Valve	305	805406	Screw, Sems
46	807542	Gear, Cam	307	805025	Screw, Sems
50	805409	Manifold, Intake			
51	805149	* Gasket, Carburetor Mounting			* Included in Gasket Set (807640)
52	805023	* Gasket, Intake Manifold			** Included in Carburetor Overhaul Kit (807962)
53	805360	Screw, Sems			*** Included in Valve Overhaul Kit (807668)
54	805006	Screw, Sems			**** Included in Gasket Set (807640); Carburetor Overhaul Kit (807962) and Carburetor Gasket Set (807716)
75	805007	Washer, Spring			
78	805447	Screw, Sems			
84	305059	Plug, Pipe			
87	805054	Seal, Governor Shaft			
94	805777	** Nozzle, Carburetor			
95	805561	Screw, Valve Mounting			
98	807705	Screw, Throttle Adjusting			
104	805586	** Pin, Float Hinge			
105	807706	Valve, Fuel Inlet			
108	805562	Valve, Choke			
116	805058	* O-Ring, Oil Pump			

NOTE: All component dimensions given in U.S. inches
1 inch = 25.4 mm

REPAIR PARTS

14 HP 38" RIDING TRACTOR -- MODEL NUMBER 917.255541

ENGINE BRIGGS & STRATTON -- MODEL NUMBER 303777, TYPE NUMBER 0332-01 AND 0332-07

KEY PART NO.	NO.	DESCRIPTION	KEY PART NO.	NO.	DESCRIPTION
308.1	807868	Cover, Air Guide, Cylinder #1	803	398892	Housing Assembly
308.2	807869	Cover, Air Guide, Cylinder #2	819	805057	Screw, Sems
309	399169	Motor, Starting	823	805317	Screw, Mounting
310	94169	Bolt	842	805012	O-Ring
311	490311	Brush Assembly	851	221798	Terminal, Ignition Cable
324	280829	Screen, Rotating	862	807859	Bracket, Air Cleaner
332	805021	Nut, Hex	864	805083	Liner, Exhaust Port
333	492341	Armature, Magneto	866	805738	Valley Cover, Air Guide
334	805407	Screw, Mounting	868	805094	Seal, Valve Guide
337	491055	Plug, Spark	869	805085	Seat, Intake Valve
353	92791	Washer, Lock, Internal Tooth	870	805086	Seat, Exhaust Valve
354	90576	Nut, Hex	871	805084	Guide, Valve
354A	810078	Nut, Hex Washer Head	876	490467	Retainer Kit
356	493792	Wire Assembly, Ground	879	805636	Cover, Carburetor
358	807640	Gasket Set	883	805024	* Gasket, Exhaust Manifold
363	19203	Puller, Flywheel	896	94288	Roll Pin
387	491922	Pump, Fuel	947	807744	Solenoid
423	805260	Screw, Sems	955	807714	Plug And Seal, Carburetor
445	394018	Cartridge, Air Cleaner	975	807715	Bowl Assembly, Float
467	491875	Knob, Air Cleaner	977	807716	Carburetor Gasket Set
474	393295	Stator, Alternator	978	805250	* Gasket, Oil Filter Adapter
501	394890	Regulator, Alternator	982	805030	Screw, Sems
510	490421	Drive Assembly	985	398525	Insulator, Ground Wire
513	398003	Clutch Assembly	987	805575	** Seal, Throttle Shaft (also included in Carburetor Gasket Set, Part Number 807716)
520	93722	Terminal, Spade			
523	807516	Dipstick	1003	490316	Brush Spring Set
524	805011	Seal, Filler Tube	1004	805632	Tube, Air Inlet
525	807611	Tube, Oil Filler	1013	805581	** Seal, Choke Shaft (also included in Carburetor Gasket Set, Part Number 807716)
526	805448	Screw, Regulator Mounting			
527	223167	Clamp, Fuel Pipe	1014	807797	Deflector, Breather, A.C.
535	271271	Element, Filter	1022	805028	Gasket, Valve Cover
537	805655	Gasket, Air Cleaner	1023	805100	Cover, Valve
544	490309	Armature Assembly		807665	Cover, Valve (Used on Cylinder #1)
552	805412	Bushing, Governor Shaft	1024	807546	Oil Pump Assembly
552A	805413	Bushing, Governor Shaft	1025	805313	Slider, Governor
562	805381	Bolt	1026	805352	Rod, Push, Intake
572	805197	Baffle, Breather		805617	Rod, Push, Exhaust
573	307663	Back Plate Assembly, Black	1027	492932	Filter, Oil
592	805383	Nut, Hex	1028	805292	Adapter, Oil Filter
601	93053	Clamp, Hose	1029	807557	Arm, Rocker
613	805158	Screw, Sems	1030	805342	Shaft, Rocker Arm
614	805417	Pin, Cotter	1031	805341	Support, Rocker Arm
615	805578	** Retainer, Choke Shaft	1033	807668	Overhaul Kit, Valve
615A	805577	** Retainer, Throttle Shaft	1036	807688	Breather Gasket Set
616	807596	Fork, Governor	1037	807717	Ball, Choke Locator
634	805416	Washer, Governor Shaft			
634A	805576	** Washer, Throttle			
634B	805574	** Collar, Throttle			
634C	805580	** Collar, Choke			
635	805529	Elbow, Spark Plug			
642	807862	Cover Assembly, Air Cleaner			
643	805631	Plate, Air Filter			
657	805009	Screw, Sems			
668	805402	Spacer, Rotating Screen			
718	805103	Dowel, Crankcase			
718A	805102	Dowel, Cylinder Head			
722	805483	Seal, Breather Screw			
726	807805	Gear, Flywheel Ring			
727	805505	Shield, Starter			
729	805641	Grommet, Ignition Cable			
741	805675	Gear, Timing			
783	280104	Gear			
788	807685	Bracket, Fuel Pump			
801	394856	Cap Assembly, Drive End			
802	490310	Cap Assembly, Commutator End			

* Included in Gasket Set (807640)
 ** Included in Carburetor Overhaul Kit (807962)
 *** Included in Valve Overhaul Kit (807668)
 **** Included in Gasket Set (807640);
 Carburetor Overhaul Kit (807962) and
 Carburetor Gasket Set (807716)

NOTE: All component dimensions given in U.S. inches
 1 inch = 25.4 mm

SERVICE NOTES
