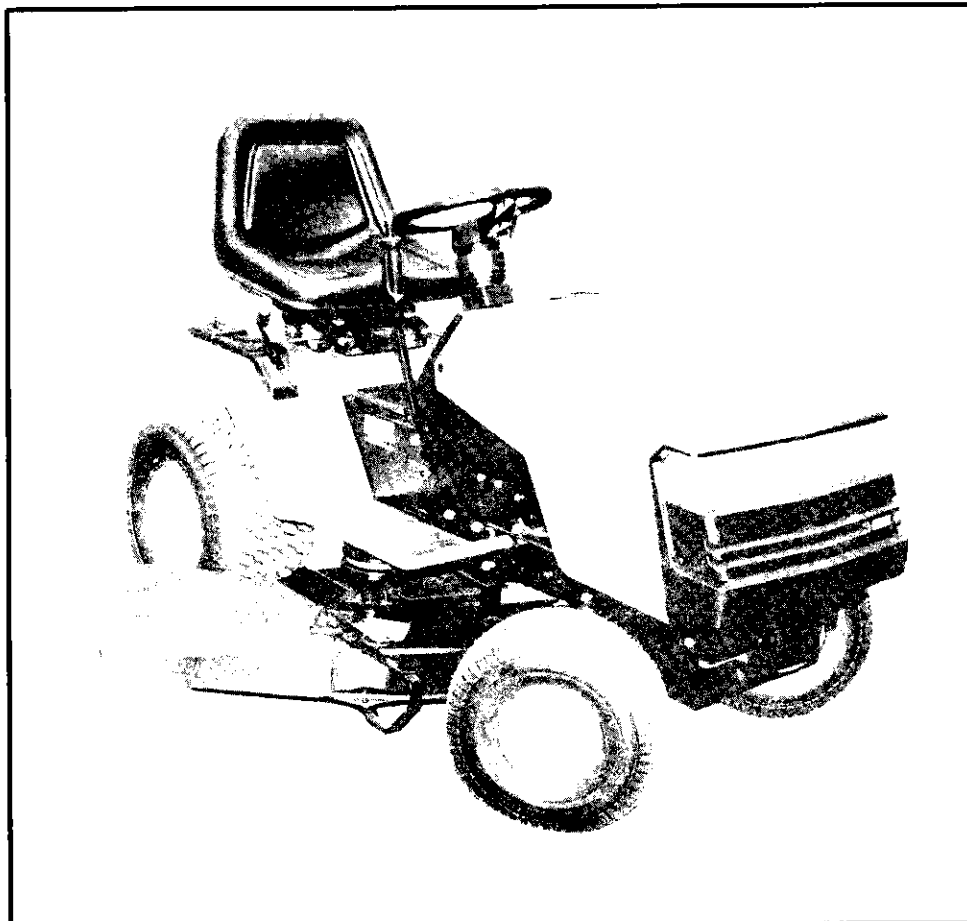


SEARS

**OWNER'S
MANUAL**

**MODEL NO.
917.255551**

Caution:
Read and follow
all Safety Rules
and Instructions
Before Operating
This Equipment



CRAFTSMAN[®]

**12.5 HP OHV
ELECTRIC START
38" MOWER
AUTOMATIC (HYDROSTATIC)
DRIVE
LAWN TRACTOR**

- Assembly
- Operation
- Maintenance
- Service and Adjustment
- Repair Parts

SAFETY RULES



CAUTION: ALWAYS DISCONNECT SPARK PLUG WIRE AND PLACE WIRE WHERE IT CANNOT CONTACT SPARK PLUG TO PREVENT ACCIDENTAL STARTING WHEN SETTING UP, TRANSPORTING, ADJUSTING OR MAKING REPAIRS.



IMPORTANT

SAFETY STANDARDS REQUIRE OPERATOR PRESENCE CONTROLS TO MINIMIZE THE RISK OF INJURY. YOUR UNIT IS EQUIPPED WITH SUCH CONTROLS. DO NOT ATTEMPT TO DEFEAT THE FUNCTION OF THE OPERATOR PRESENCE CONTROLS UNDER ANY CIRCUMSTANCES.

TRAINING:

- Know the controls and how to stop quickly. Read this owner's manual and instructions furnished with attachments.
- Do not allow children to operate the machine. Do not allow adults to operate it without proper instruction.
- Do not carry passengers. Do not mow when children and others are around.
- Do not attempt to operate your vehicle or mower when not in the driver's seat.
- Always get on or off your vehicle from the operator's left hand side.
- The vehicle and attachments should be stopped and inspected for damage after striking a foreign object, and the damage should be repaired before restarting and operating the equipment.
- Never mow in wet or slippery grass, when traction is unsure, or at a speed which could cause a skid.
- Stay alert for holes in the terrain and other hidden hazards. Keep away from drop-offs.
- Do not drive too close to creeks, ditches, and public highways.
- Exercise special care when mowing around fixed objects in order to prevent the blades from striking them. Never deliberately run vehicle or mower into or over any foreign objects.
- Never shift gears until vehicle comes to a stop.
- Never place hands or feet under the mower, in discharge chute, or near any moving parts while vehicle or mower is running. Always keep clear of discharge chute.
- Use care when pulling loads or using heavy equipment.
 - Use only approved drawbar hitch points.
 - Limit loads to those you can safely control.
 - Do not turn sharply. Use care when backing.
 - Use counterweight or wheel weights when suggested in owner's manual.
- Watch out for traffic when crossing or near roadways.
- When using any attachments, never direct discharge of material toward bystanders nor allow anyone near the vehicle while in operation.
- Except for adjustments, do not operate engine if air cleaner or cover directly over carburetor air intake is removed. Removal of such part could create a fire hazard.
- Do not change the engine governor settings or overspeed the engine; severe damage or injury may result.
- When using the vehicle with mower, proceed as follows:
 - Mow only in daylight or in good artificial light.
 - Shut the engine off when unclogging chute.
 - Check the blade mounting bolts for proper tightness at frequent intervals.
- Disengage power to mower before backing up. Do not mow in reverse unless absolutely necessary and then only after careful observation of the entire area behind the mower.

PREPARATION:

- Always wear substantial footwear. Do not wear loose fitting clothing that could get caught in moving parts.
- Clear the work area of objects (wire, rocks, etc.) which might be picked up and thrown.
- Disengage all attachment clutches before attempting to start the engine.
- Handle gasoline with care - it is highly flammable.
 - Use approved gasoline containers.
 - Never remove the fuel cap of the fuel tank or add gasoline to a running or hot engine or an engine that has not been allowed to cool for several minutes after running. Never fill tank indoors. Always clean up spilled gasoline.
 - Open doors if the engine is run in the garage - exhaust fumes are dangerous. Do not run the engine indoors.
- Do not operate the mower without the entire grass catcher, on mowers so equipped, or the deflector shield in place.

OPERATION:

- Keep your eyes and mind on your vehicle, mower, and the area being cut. Do not let other interests distract you.
- Disengage power to attachments and stop the engine before leaving the operator's position.
- Disengage power to mower, stop the engine, and disconnect spark plug wire(s) from spark plug(s) before cleaning, making an adjustment, or repair. Be careful to avoid touching hot muffler or engine components.
- Disengage power to attachments when transporting or not in use.
- Take all possible precautions when leaving the vehicle unattended. Disengage the power take-off, lower the attachments, shift into neutral, set the parking brake, stop the engine, and remove the key.
- Do not stop or start suddenly when going uphill or downhill. Mow up and down the face of slopes (not greater than 15°), never across the face.
- Reduce speed on slopes and make turns gradually to prevent tipping or loss of control. Exercise extreme caution when changing direction on slopes.
- While going up or down slopes, place gearshift control lever in 1st gear position to negotiate the slope without stopping.

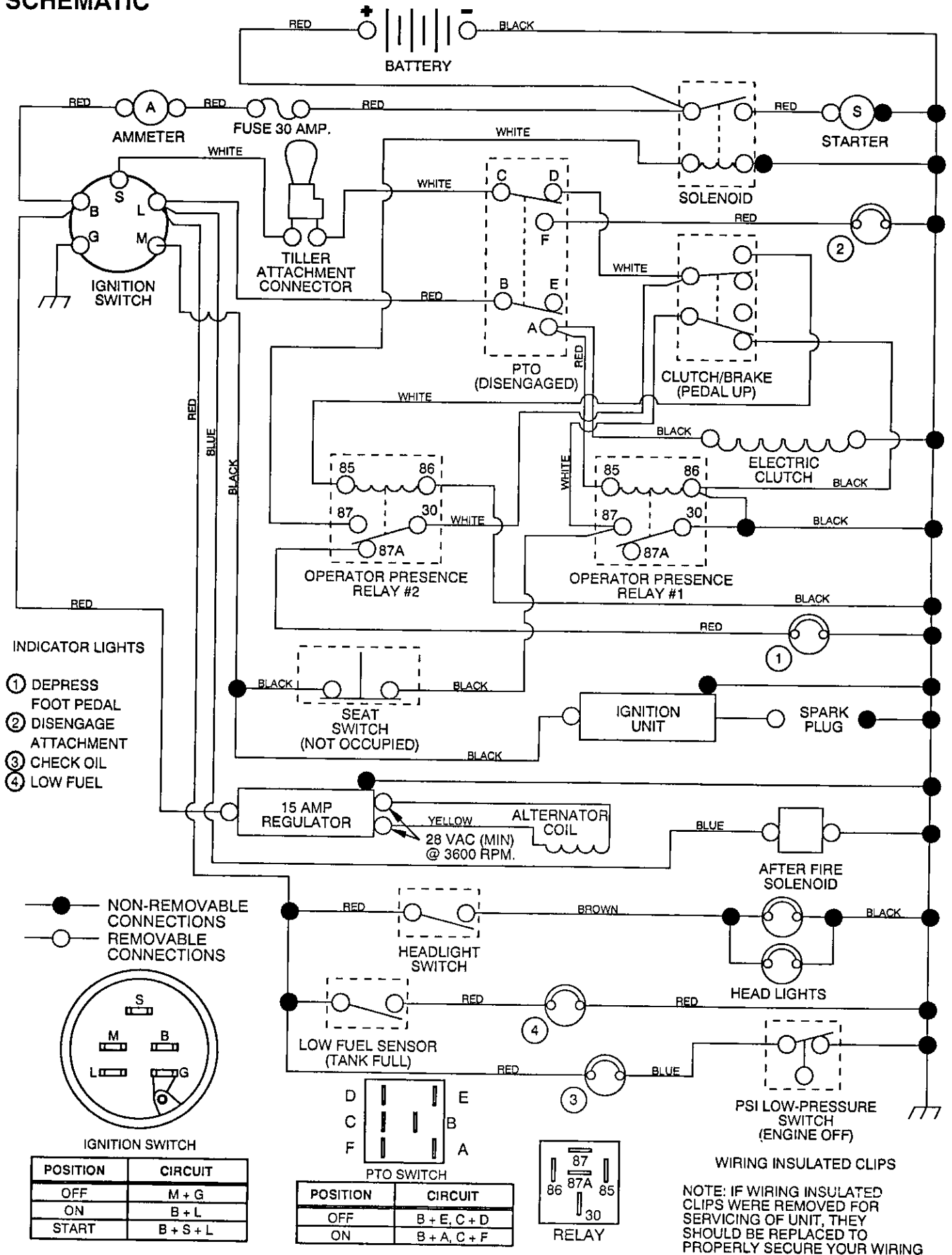
MAINTENANCE AND STORAGE

- Keep the vehicle and attachments in good operating condition, and keep safety devices in place and working.
- Keep all nuts, bolts, and screws tight to be sure the equipment is in safe working condition.
- Never store the equipment with gasoline in the tank inside a building where fumes may reach an open flame or spark. Allow the engine to cool before storing in any enclosure.
- To reduce fire hazard, keep the engine free of grass, leaves, or excessive grease. Do not clean product while engine is running.
- Do not operate without a muffler, or tamper with exhaust system. Damaged mufflers or spark arresters could create a fire hazard. Inspect periodically and replace if necessary.
- Under normal usage the grass catcher bag material is subject to deterioration and wear. It should be checked frequently for bag replacement. Replacement bags should be checked to ensure compliance with the original manufacturer's recommendations or specifications.



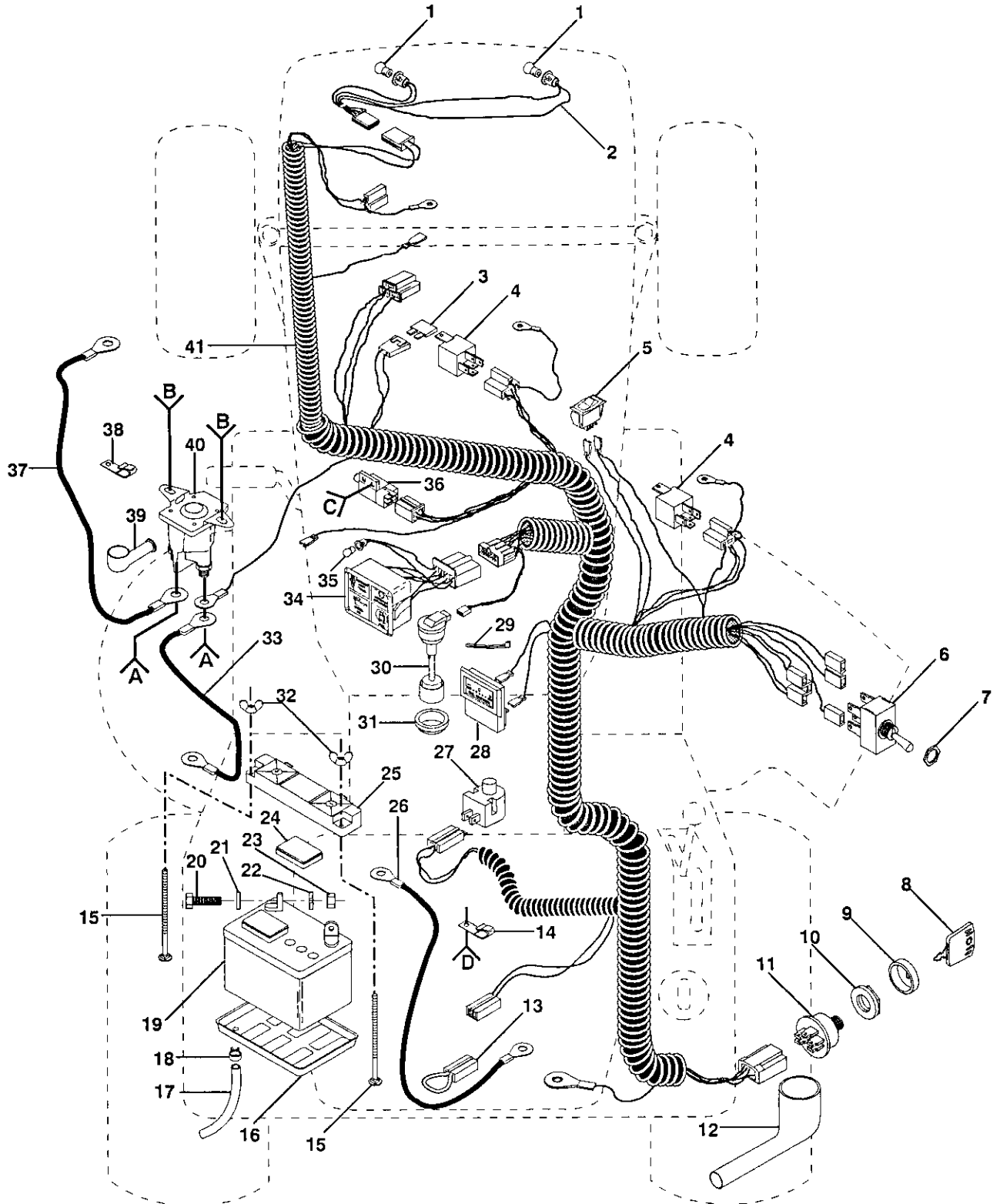
LOOK FOR THIS SYMBOL TO POINT OUT IMPORTANT SAFETY PRECAUTIONS. IT MEANS - ATTENTION!!! BECOME ALERT!!! YOUR SAFETY IS INVOLVED.

12.5 HP 38" RIDING LAWN TRACTOR - - MODEL NUMBER 917.255551 SCHEMATIC



REPAIR PARTS

12.5 HP 38" RIDING LAWN TRACTOR - - MODEL NUMBER 917.255551 ELECTRICAL



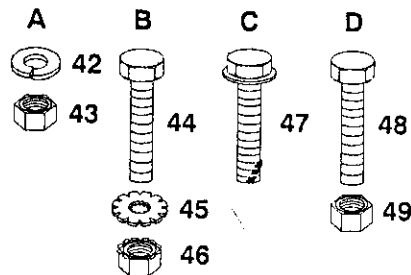
REPAIR PARTS

12.5 HP 38" RIDING LAWN TRACTOR - - MODEL NUMBER 917.255551 ELECTRICAL

KEY NO.	PART NO.	DESCRIPTION	KEY NO.	PART NO.	DESCRIPTION
1	7662J	Bulb, Light	27	121305X	Switch, Seat
2	127441	Harness, Light Socket	28	121433X	Ammeter
3	108824X	Fuse, 30 Amp	29	7192J	Tie, Cable
4	109748X	Relay	30	126828X	Sensor, Fuel, Low Level
5	110712X	Switch, Light	31	126855X	Bushing, Rubber, Low Level Sensor
6	126019X	Switch, PTO	32	123198X	Nut, Wing 1/4-20
7	4022J	Nut, Hex	33	4799J	Cable, Battery
8	109310X	Molded Key	34	126835X	Assembly, Light Package
9	123620X	Cover, Key Switch	35	110143X	Bulb, Dashboard Light
10	124211X	Ignition, Nut	36	109553X	Switch, Interlock, Clutch Pedal
11	102972X	Switch, Ignition	37	5114J	Cable, Starter
12	124083X	Cover, Ignition Switch	38	2751R	Clip, Fuel Line
13	102501X	Wire, Loop	39	719J	Cover, Terminal
14	235R	Clip, Insulator	40	109081X	Solenoid
15	STD532575	* Bolt, Carriage 1/4-20 x 7-1/2	41	126773X	Harness, Ignition
16	7603J	Tray, Battery	42	STD551125	* Washer, Lock 1/4
17	105687X	Tube, Battery Tray	43	STD541225	* Nut, Jam 1/4-20
18	109596X	Clamp, Hose	44	STD522505	* Bolt, Hex 1/4-20 x 1/2 Gr. 5
19	125603X	Battery	45	STD551225	* Washer, Lock Ext. Tooth 1/4
20	STD522507	* Bolt, Hex 1/4-20 x 3/4	46	STD541425	* Nut, Keps 1/4-20
21	STD551025	* Washer 9/32 x 5/8 x 16 Ga.	47	STD601005	* Screw, Hex, Tap 10-24 x 1/2
22	STD551125	* Washer, Lock 1/4	48	74780408	Bolt, 1/4-20 x 1/2
23	STD541025	* Nut, Hex 1/4-20	49	73680400	Nut, Crownlock 1/4-20
24	121264X	Caps, Battery	--	128343	Manual, Owner's
25	102476X	Guard, Terminal	--	101539X	Sheet, Instruction, Tractor 15° Slope
26	4207J	Cable, Ground			

*STANDARD HARDWARE - - PURCHASE LOCALLY

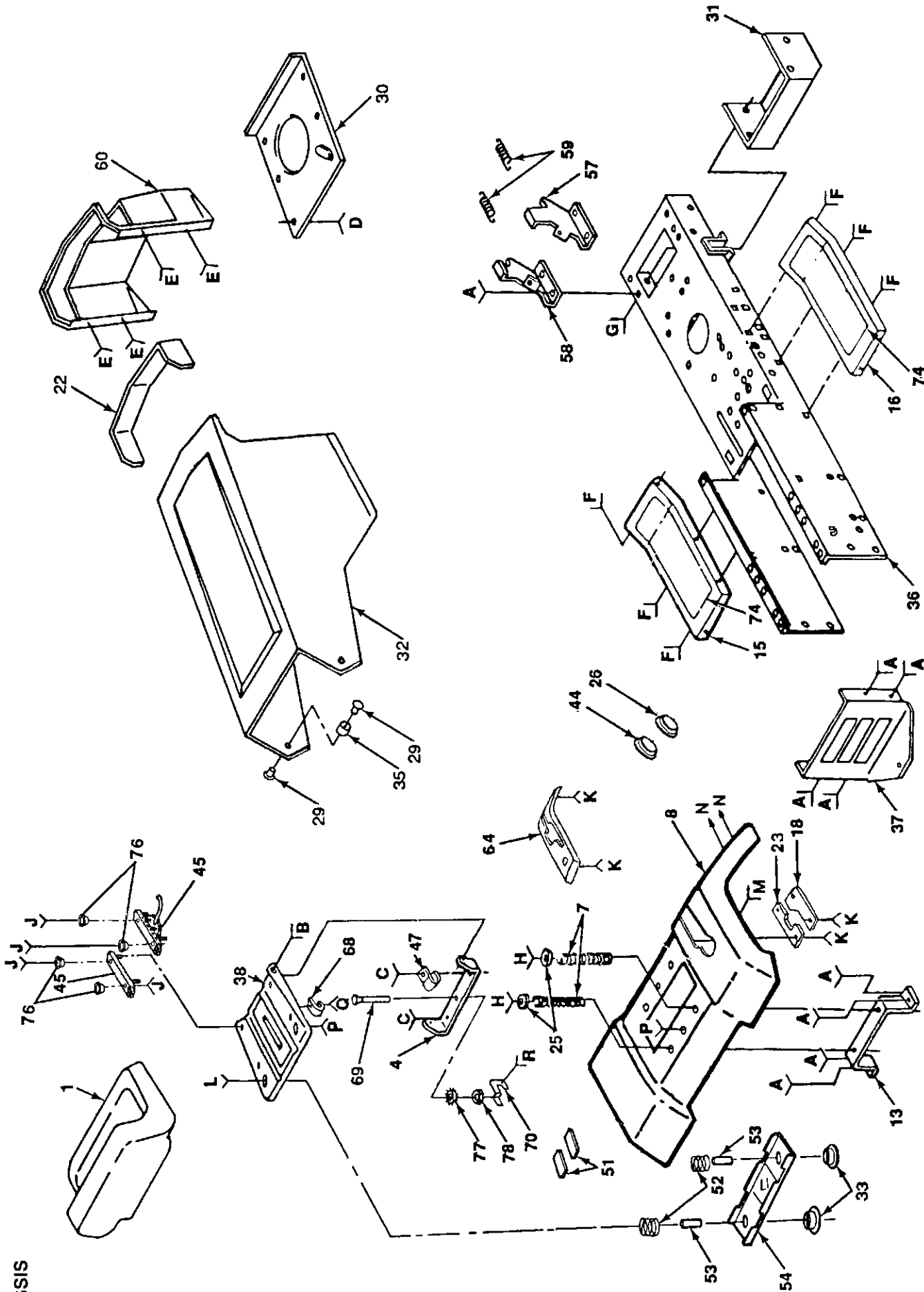
NOTE: All component dimensions given in U.S. inches
1 inch = 25.4 mm



REPAIR PARTS

12.5 HP 38" RIDING LAWN TRACTOR - - MODEL NUMBER 917.255551

CHASSIS



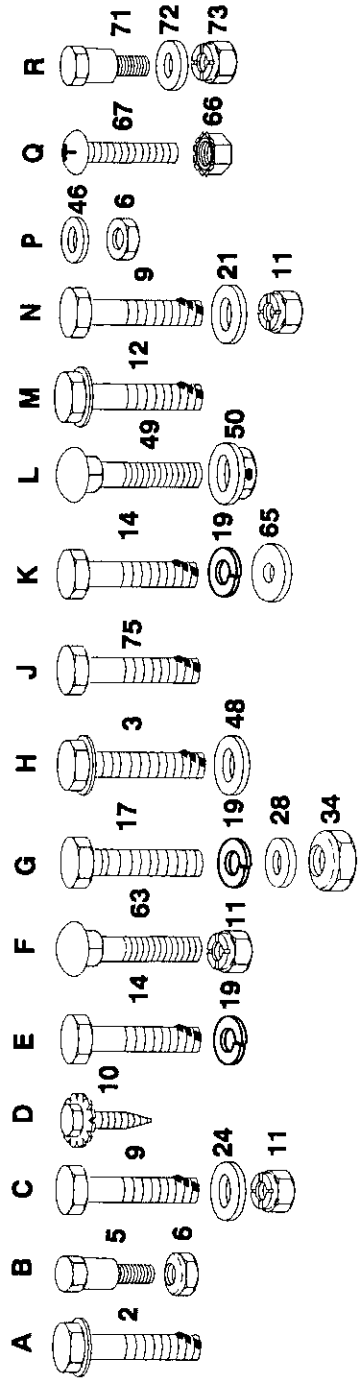
REPAIR PARTS

12.5 HP 38" RIDING LAWN TRACTOR -- MODEL NUMBER 917.255551

CHASSIS

KEY NO.	PART NO.	DESCRIPTION	KEY NO.	PART NO.	DESCRIPTION	KEY NO.	PART NO.	DESCRIPTION
1	126826X	Seat	28	19091416	Washer 9/32 x 7/8 x 16 Ga.	67	STD511005	* Screw, Slotted Pan Head #10-32 x 1/2
2	17490612	Screw, Hex, Washer Hd. Thrd. Roll 3/8-16 x 3/4	29	122933X	Rivet, Fatchet, Nylon	68	4171R	Nut, Fin Hex 3/8-24 UNF
3	17490616	Screw, Hex, Washer Hd. Thrd. Roll 3/8-16 x 1	30	126842X	Shield, Hood, Heat	69	126654X	Decal, Rear Fender
4	126656X	Bracket, Pivot, Seat	31	123665X	Deflector, Heat	70	126575X	Decal, Grill, Front
5	105529X	Bolt, Shoulder 5/16-18	32	124025X	Hood Assembly	71	7605J	Decal, Clutch/Brake
6	STD541431	* Nut, Crownlock 5/16-18	33	121248X	Bushing, Snap	72	110739X	Decal, Chassis Side, 38"
7	124181X	Spring, Seat	34	126850X	Nut, Self Retaining 1/4-20	73	73680400	Footrest
8	126599X	Fender	35	124479X	Washer, Black, Nylon	74	105466X	Screw, Hex 5/16-18 x 1
9	STD523707	* Bolt, Fin Hex 3/8-16 x 3/4	36	126662X	Chassis Assembly	75	17190516	Spacer
10	17030808	Screw, Spiderlock Hex #8 x 1/2 AB	37	121306X	Drawbar	76	124427X	* Washer, Lock Ext. Tooth 3/8
11	STD541437	* Nut, Crownlock 3/8-16	38	124294X	Pan, Seat	77	STD551237	Nut, Fin Hex 3/8-24 UNF
12	17490608	Screw, Hex Washer Hd. Thrd. Roll 3/8-16 x 1/2	44	9151R	Grommet	78	73610600	Decal, 12.5 HP OHV (Hood Side)
13	109873X	Bracket, Fender	45	124428X	Slide, Set Seat		126778X	Decal, Rear Fender
14	STD512505	* Bolt, Fin Hex 1/4-20 x 1/2	46	19111610	Washer 11/32 x 1 x 10 Ga.		126783X	Decal, Grill, Front
15	105465X	Footrest, L.H.	47	2751R	Clip, Fuel Line		126779X	Decal, Clutch/Brake
16	105464X	Footrest, R.H.	48	19131614	Washer 13/32 x 1 x 14 Ga.		4900J	Decal, Chassis Side, 38"
17	74760412	Bolt, Hex 1/4-20 x 3/4	49	72050411	Bolt, Carriage 1/4-20 x 1-3/8		126780X	Decal, Belt Installation (Under Footrest)
18	126597X	Plate, Neutral, Adjust R.H.	50	123976X	Nut, Hex Large Flange, Lock		126776X	Decal, Stripe, (Hood L.H.)
19	STD551125	* Washer, Lock, Hvy Helical Spring	51	121251X	Strip, Foam		126777X	Decal, Stripe, (Hood R.H.)
21	19131312	Washer 13/32 x 13/16 x 12 Ga.	52	123740X	Spring, Seat Compression		106974X	Decal, Caution (Front Fender)
22	124029X	Lens Assembly	53	130481	Spacer		127520	Decal, USA (Rear Fender)
23	126598X	Plate, Neutral, Adjust L.H.	54	121246X	Bracket, Switch Mount			
24	19131210	Washer 13/32 x 3/4 x 10 Ga.	57	123913X	Bracket, Pivot, R.H.			
25	124238X	Cap, Spring	58	123914X	Bracket, Pivot, L.H.			
26	110436X	Grommet, Split	59	124040X	Spring, Extension			
			60	126741X	Grill			
			63	STD533707	* Bolt, Carriage 3/8-16 x 3/4			
			64	126600X	Console, Shift, Fender Hydro			
			65	STD551025	* Washer 9/32 x 3/4 x 16 Ga.			
			66	73951000	Nut, Keps #10-32 UNF			

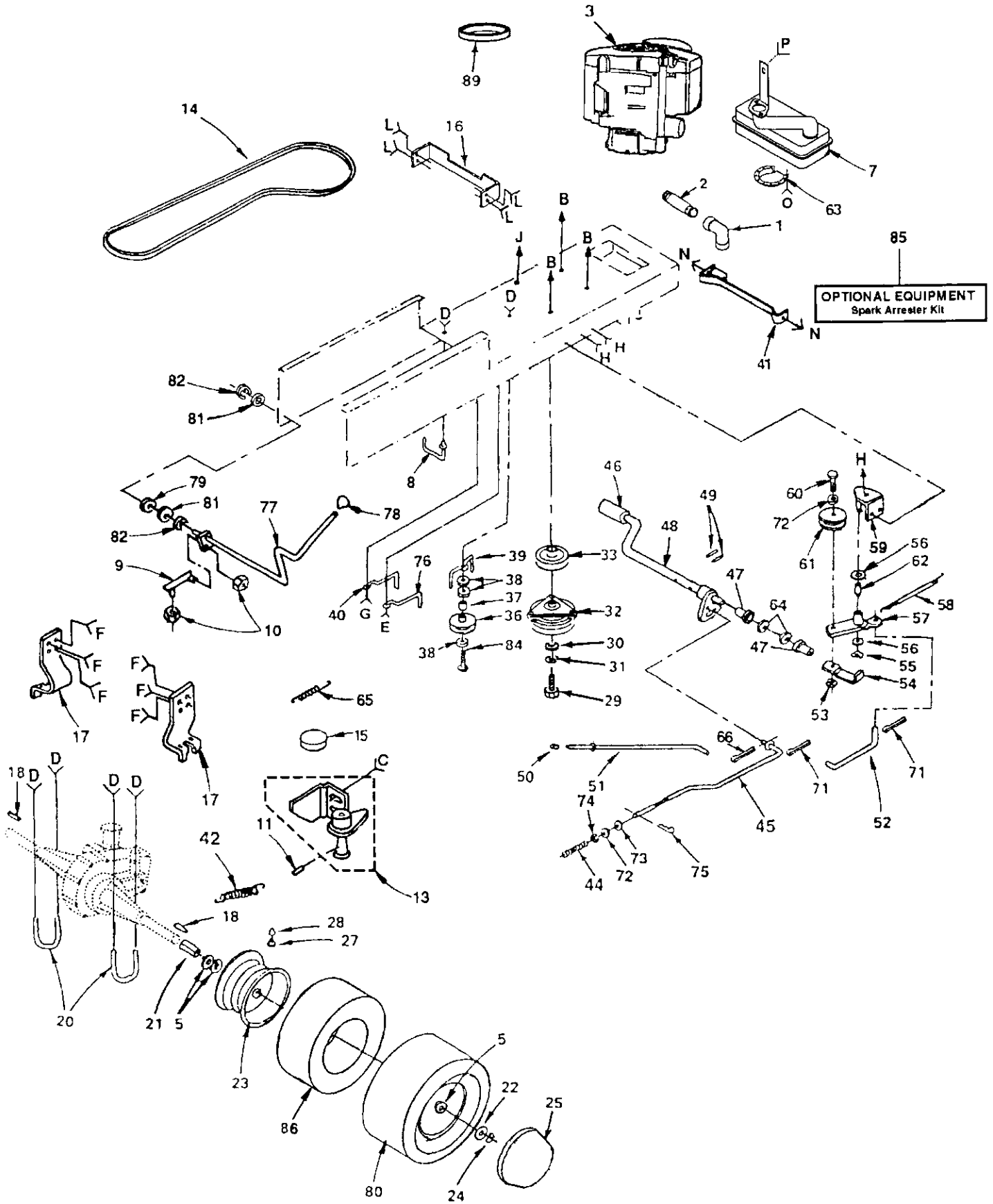
*STANDARD HARDWARE-PURCHASE LOCALLY
NOTE: All component dimensions given in U.S. inches.



REPAIR PARTS

12.5 HP 38" RIDING LAWN TRACTOR - - MODEL NUMBER 917.255551

DRIVE



REPAIR PARTS

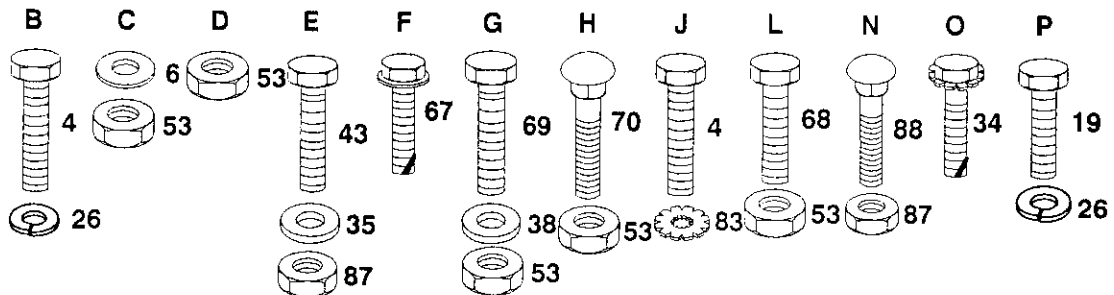
12.5 HP 38" RIDING LAWN TRACTOR - - MODEL NUMBER 917.255551

DRIVE

KEY NO.	PART NO.	DESCRIPTION	KEY NO.	PART NO.	DESCRIPTION
1	13200300	Elbow, 90° 3/8-18 NPT	49	STD571810	* Pin, Roll 3/16 x 1
2	13280336	Nipple, Pipe	50	7733J	Cap, Plunger
3	126784X	Engine 12.5 HP Model No. CV12.5S Type No. 1438	51	125638X	Rod, Brake, Park
4	M010208025	Screw M8 x 1-1/4 x 25mm	52	105710X	Link, Clutch
5	121749X	Washer 25/32 x 1-1/4 x 16 Ga.	53	STD541437	* Nut, Lock 3/8-16
6	19111610	Washer 11/32 x 1 x 10 Ga.	54	123205X	Retainer, Belt
7	124196X	Muffler	55	12000039	Ring, Klip
8	126577X	Keeper, Centerspan	56	110812X	Washer, Hardened
9	126589X	Link, Pump Control	57	123789X	Arm, Idler
10	73040400	Nut 1/4-28 Nylock	58	105709X	Spring, Return, Clutch
11	126655X	Pin, Roll, Metric	59	123102X	Bracket, Clutch
13	126912X	Assembly, Friction Pack	60	STD523715	* Bolt, Hex 3/8-16 x 1-1/2
14	126576X	V-Belt, Drive	61	123766X	Pulley, Idler
15	121232X	Cap, Spindle	62	105706X	Bearing
16	121187X	Bracket, Mounting, Hydro	63	101326L	Deflector, Muffler
17	126649X	Bracket, Transaxle	64	19211616	Washer 21/32 x 1 x 16 Ga.
18	123583X	Key, Square 2.5 x .1845/.1865	65	126910X	Spring, Extension
19	74760508	Bolt, Hex 5/16-18 x 1/2	66	17490612	Retainer, Spring
20	121189X	U-Bolt 3/8-16 x 2-7/8	67	17490616	Screw, Hex, Washer Hd. Thrd. Roll 3/8-16 x 1
21	121199X	Spacer, Split	68	STD523707	* Bolt, Fin Hex 3/8-16 x 3/4 UNC
22	121748X	Washer 25/32 x 1-5/8 x 16 Ga.	69	STD523710	* Bolt, Hex 3/8-16 x 1
23	106108X	Rim, Rear	70	STD533707	* Bolt, Carriage 3/8-16 x 3/4
24	STD581075	* E-Ring	71	STD561210	* Pin, Cotter 1/8 x 3/4
25	126736X	Cover, Wheel	72	STD551037	* Washer 13/32 x 13/16 x 16 Ga.
26	STD551131	* Washer, Lock, Hvy Helical Spring	73	STD541437	* Nut, Lock Hex W/Washer Insert 3/8-16
27	65139	Stem, Valve	74	STD541237	* Nut, Hex Jam 3/8-16
28	59192	Cap, Valve	75	4497H	Clip, Hairpin
29	M010110100	Bolt, Hex M10 x 1.5 x 100	76	105730X	Keeper, Belt, Engine
30	126197X	Washer 15/32 ID x 1-1/2 OD x 1/4	77	126592X	Lever, Control Assembly
31	STD551143	* Washer, Lock 7/16	78	126639X	Grip, Knob
32	108218X	Clutch, Electric	79	126590X	Bushing, Pivot L.H.
33	109841X	Pulley, Engine	80	126811X	Tire, Rear
34	17030808	Screw, Spiderlock, Hex #8 x 1/2	81	126591X	Washer, Shim
35	19111212	Washer 11/32 x 3/4 x 12 Ga.	82	STD581050	* E-Ring
36	123674X	Idler, Flat	83	STD551231	* Washer, Lock External Tooth
37	4470J	Spacer	84	STD523727	* Bolt, Hex 3/8-16 x 1-3/4
38	19131312	Washer 13/32 x 13/16 x 12 Ga.	85	121851X	Spark Arrester Kit
39	109070X	Keeper, Belt	86	7152J	Tube (not furnished with tractor)
40	121218X	Keeper, Belt, Engine L.H.	87	STD541431	* Nut, Lock 5/16-18
41	109169X	Locator, Clutch	88	STD533107	* Bolt, Carriage 5/16-18 x 3/4
42	110422X	Spring, Brake Return	89	127073X	Strip, Foam
43	74760516	Bolt, Hex 5/16-18 x 1	—	126779X	Decal, Wheel Cover
44	106888X	Spring, Rod Brake			
45	126634X	Rod, Brake			
46	123533X	Cover, Pedal			
47	120183X	Bearing, Nylon			
48	122424X	Shaft, Foot Pedal Assembly			

*STANDARD HARDWARE - - PURCHASE LOCALLY

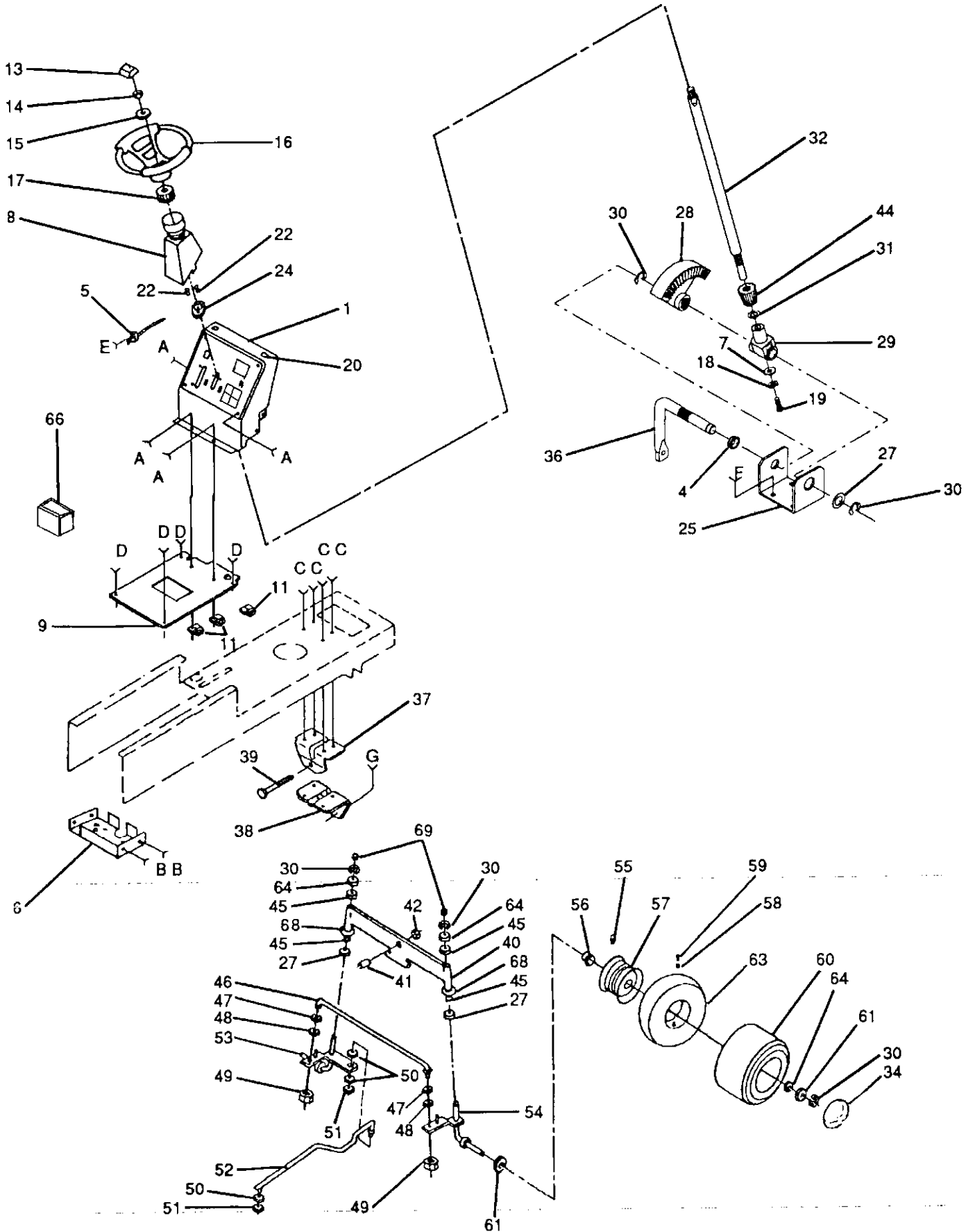
NOTE: All component dimensions given in U.S. inches
1 inch = 25.4 mm



REPAIR PARTS

12.5 HP 38" RIDING LAWN TRACTOR - - MODEL NUMBER 917.255551

STEERING AND FRONT AXLE

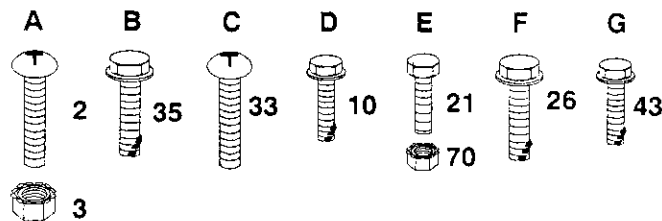


REPAIR PARTS

12.5 HP 38" RIDING LAWN TRACTOR - - MODEL NUMBER 917.255551

STEERING AND FRONT AXLE

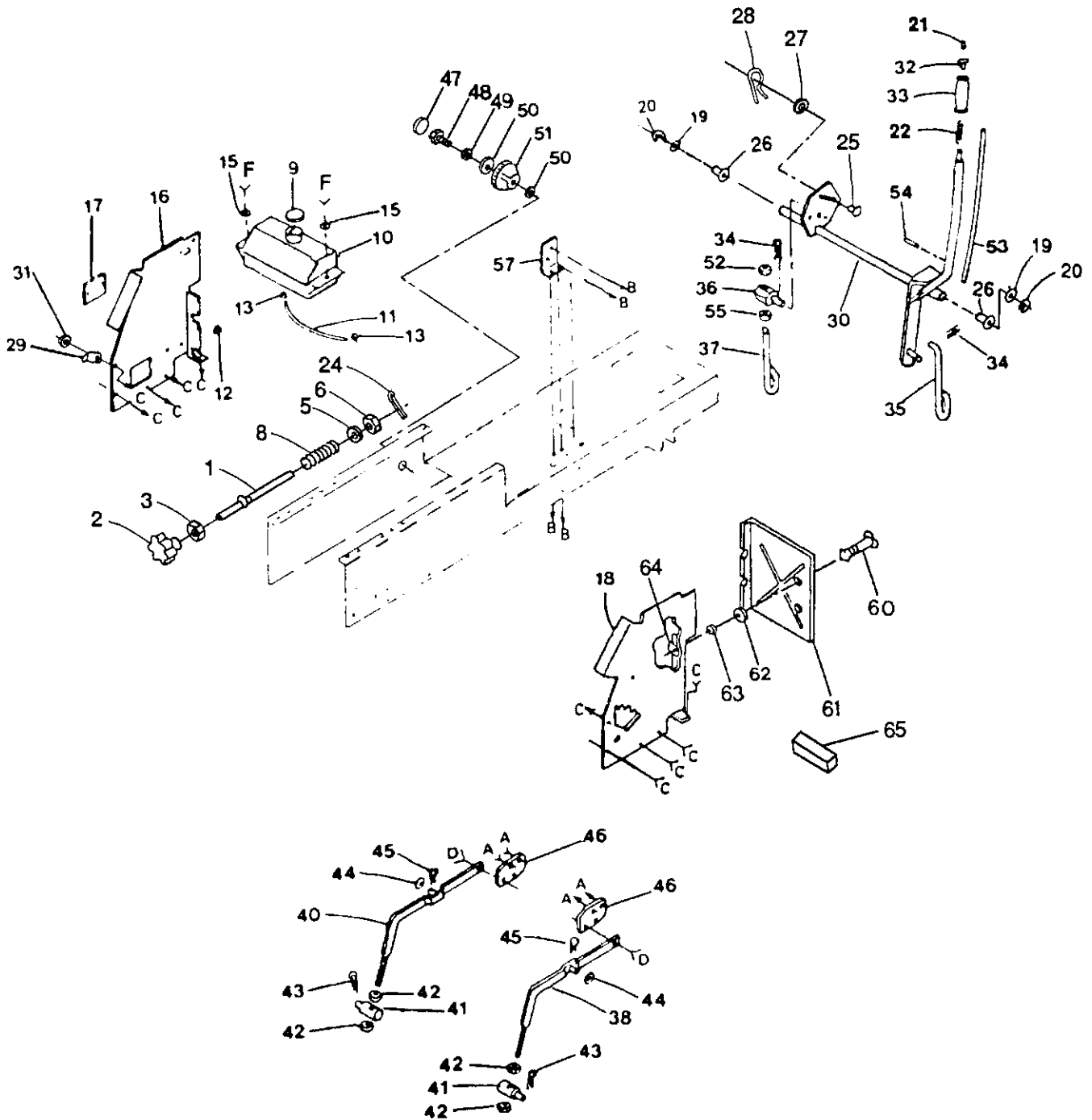
KEY NO.	PART NO.	DESCRIPTION	KEY NO.	PART NO.	DESCRIPTION
1	126532X	Dash	40	105669X	Axle, Front
2	74180512	Screw, Truss Head 5/16-18 x 3/4	41	110438X	Spacer, Bearing, Front Axle
3	STD541431	* Nut, Keps 5/16-18	42	73901000	Nut, Lock, Flange 5/18-11
4	109816X	Nyliner, Snap In	43	17490508	Screw, Hex Washer Hd. Thrd. Roll 5/16-18 x 1/2 Type TT
5	126235X	Control, Throttle	44	124037X	Gear, Pinion
6	108171X	Support, Battery	45	3366R	Bearing
7	126684X	Washer 5/8 x 1/4 x 16 Ga.	46	121334X	Rod, Tie
8	124417X	Boot, Steering Shaft	47	19111216	Washer 11/32 x 3/4 x 16 Ga.
9	126709X	Saddle	48	STD551131	* Washer, Lock Hvy. Helical Spring
10	17490608	Screw, Hex Washer Hd. Thrd. Roll 3/8-16 x 1/2	49	STD541531	* Nut, Hex, Nylon 5/16-24 UNF
11	2751R	Clip, Insulated	50	STD551137	* Washer, Lock 3/8
13	126805X	Insert, Steering Wheel	51	73610600	Nut, Fin Hex 3/8-24 UNF
14	STD541350	* Nut, Lock, Hex, Jam 1/2-20	52	124032X	Link, Drag
15	100712K	Washer 2-1/4	53	105656X	Spindle, L.H.
16	121472X	Wheel, Steering	54	105654X	Spindle, R.H.
17	100711L	Adapter, Steering Wheel	55	278H	Fitting, Grease
18	STD551125	* Washer, Lock 1/4	56	9040H	Bearing, Grease
19	71070410	Screw, Socket Hex 1/4-20 x 5/8	57	106732X	Rim, 6" Front
20	126938X	Bumper, Hood	58	59192	Cap, Valve
21	71141008	Screw #10-24 x 1/2	59	65139	Stem, Valve
22	STD611005	* Screw, Hex Tapping #10-16 x 1/2	60	126810X	Tire, Front
24	124373X	Bushing, Steering	61	121749X	Washer 25/32 x 1-1/4 x 16 Ga.
25	124036X	Bracket, Steering	63	59904	Tube, Front (Not furnished with tractor)
26	17490612	Screw, Hex Washer Hd. Thrd. Roll 3/8-16 x 3/4 Type TT	64	121748X	Washer 25/32 x 1-5/8 x 16 Ga.
27	6266H	Bearing, Thrust	66	126641X	Tool Box, Limited
28	124034X	Gear, Sector	68	19272016	Washer 27/32 x 1-1/4 x 16 Ga.
29	124035X	Shaft, Support	69	121232X	Cap, Spindle
30	12000029	Ring, Klip	70	73731000	Nut, Keps #10-24 UNC
31	57079	Washer, Hardened	—	108456X	Decal, Instruction (Dash Panel)
32	124038X	Shaft, Steering,	—	126775X	Decal, Dash Panel
33	122819X	Screw, Special	—	126779X	Decal, Wheel Cover
34	126735X	Cover, Wheel	—	126781X	Decal, Parking Brake (Dash Panel)
35	17490512	Screw, Hex Washer Hd. Thrd. Roll 5/16-18 x 3/4	—	126782X	Decal, Steering Wheel Cap
36	124033X	Shaft, Pittman	*STANDARD HARDWARE - - PURCHASE LOCALLY		
37	105663X	Support, Saddle, Rear	NOTE: All component dimensions given in U.S. inches		
38	105664X	Support, Saddle, Front	1 inch = 25.4 mm		
39	74761060	Bolt, Hex 5/8-11x 3-3/4			



REPAIR PARTS

12.5 HP 38" RIDING LAWN TRACTOR - - MODEL NUMBER 917.255551

LIFT ADJUSTMENT



REPAIR PARTS

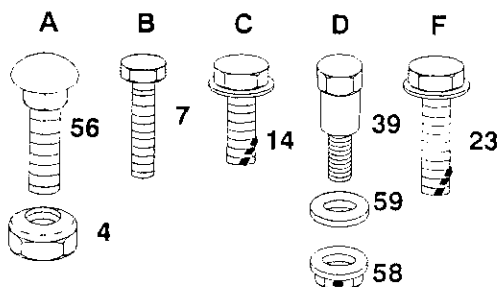
12.5 HP 38" RIDING LAWN TRACTOR - - MODEL NUMBER 917.255551

LIFT ADJUSTMENT

KEY NO.	PART NO.	DESCRIPTION	KEY NO.	PART NO.	DESCRIPTION
1	126971X	Rod, Lift, Adjustment	33	126640X	Grip, Handle
2	126652X	Knob, Height Adjust	34	4939M	Retainer, Spring
3	STD541237	* Nut, Hex, Jam 3/8-16	35	110029X	Link, Lift
4	STD541437	* Nut, Crownlock 3/8-16	36	110447X	Trunnion, Lift
5	19131016	Washer 13/32 x 5/8 x 16 Ga.	37	110448X	Link, Lift, Adjustable
6	110807X	Nut, Special	38	121598X	Arm, Suspension R.H.
7	STD601005	* Screw, Hex, Tapping, #10-24 x 1/2	39	105848X	Bolt, Shoulder 3/8-16
8	2876H	Spring	40	121599X	Arm, Suspension L.H.
9	123549X	Cap, Fuel	41	106308X	Trunnion, Lift, Lower
10	126829X	Tank, Fuel	42	STD541050	* Nut, Hex 1/2-13
11	101335K	Line, Fuel	43	9135R	Retainer, Spring
12	124028X	Grommet	44	19171516	Washer 17/32 x 15/16 x 16 Ga.
13	123487X	Clamp, Hose	45	4921H	Retainer, Spring
14	17490612	Screw, Hex Washer Thrd. Roll 3/8-16 x 3/4	46	105864X	Bracket, Suspension
15	19091416	Washer 9/32 x 7/8 x 16 Ga.	47	123935X	Plug, Hole
16	122795X	Panel, Dash L.H.	48	74780516	Bolt, Hex Fin 5/16-18UNC x 1
17	121794X	Cover, Access	49	STD551131	* Washer, Lock Hvy Helical Spring
18	126276X	Panel, Dash R.H.	50	19112410	Washer 11/32 x 1-1/2 x 10 Ga.
19	19211416	Washer 21/32 x 7/8 x 16 Ga	51	123934X	Scale, Height Indicator
20	STD581062	* E-Ring	52	73710700	Nut, Crownlock 7/16-20
21	124385X	Button, Plunger	53	122514X	Rod, Assembly, Lever
22	122512X	Spring, Compression	54	105767X	Pin, Groove
23	17490412	Screw, Hex Washer Thrd. Roll 1/4-20 x 3/4	55	STD541343	* Nut, Hex Jam 7/16-20
24	STD560907	* Pin, Cotter	56	STD533707	* Screw 3/8-16 x 3/4
25	110810X	Trunnion, Depth Stop	57	108236X	Bracket, Switch
26	120183X	Bearing, Nylon	58	73980600	Nut, Flangelock 3/8-16
27	19151216	Washer 15/32 x 3/4 x 16 Ga.	59	110739X	Washer, Spring
28	12000037	Ring, Klip	60	123650X	Stud, 1/4 Turn
29	123933X394	Pointer, Height Indicator	61	105736X	Shield, Heat
30	122516X	Shaft, Lift	62	STD551025	* Washer 9/32 x 5/8 x 16 Ga.
31	120529X	Washer, Nylon .44 x .75 x 032.	63	105838X	Retainer, 1/4 Turn
32	122364X	Plunger	64	105839X	Receptacle, 1/4 Turn
			65	127057X	Strip, Foam
			---	127074X	Decal, Lift Lever

*STANDARD HARDWARE - - PURCHASE LOCALLY

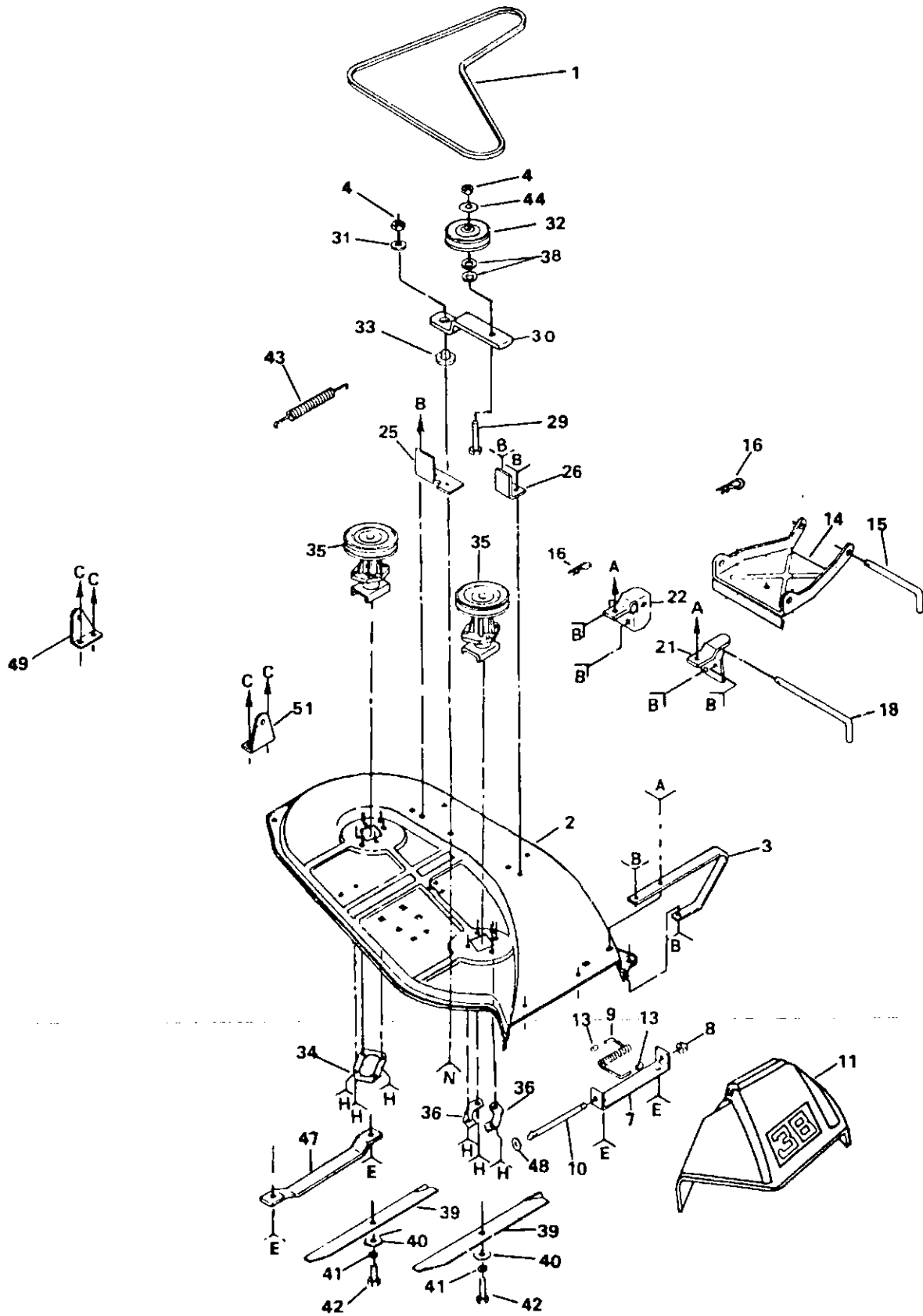
NOTE: All component dimensions given in U.S. inches
1 inch = 25.4 mm



REPAIR PARTS

12.5 HP 38" RIDING LAWN TRACTOR - - MODEL NUMBER 917.255551

38" MOWER



REPAIR PARTS

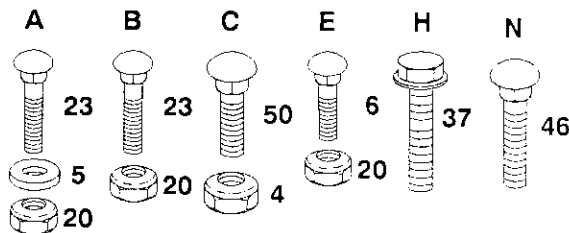
12.5 HP 38" RIDING LAWN TRACTOR - - MODEL NUMBER 917.255551

38" MOWER

KEY NO.	PART NO.	DESCRIPTION	KEY NO.	PART NO.	DESCRIPTION
1	106085X	V-Belt	35	121687X	Mandrel Assembly
2	121458X	Housing	36	100668L	Plate, Support Mandrel
3	8417J	Runner, R.H.	37	17490620	Screw, Hex Washer Hd. Thrd. Roll 3/8-16 x 1-1/4
4	STD541437	* Nut, Lock 3/8-16	38	19131210	Washer 13/32 x 3/4 x 10 Ga.
5	19111216	Washer 11/32 x 3/4 x 16 Ga.	39	121263X	Blade
6	STD533106	* Bolt, Carriage 5/16-18 x 5/8	40	19132012	Washer 13/32 x 1-1/4 x 12 Ga.
7	105896X	Bracket, Deflector	41	STD551137	* Washer, Lock 3/8
8	110452X	Pushnut	42	STD623715	* Bolt, Hex 3/8-24 x 1-1/2 Gr. 5
9	106734X	Spring, Deflector	43	102727X	Spring, Extension
10	106735X	Rod, Hinge	44	STD551037	* Washer 13/32 x 13/16 x 16 Ga.
11	106736X	Deflector, Shield	46	STD533712	* Bolt, Carriage 3/8-16 x 1-1/4
13	105304X	Cap, Sleeve	47	7631J	Runner, L.H.
14	129762	Link, Parallel	48	19111016	Washer 11/32 x 5/8 x 16 Ga.
15	105744X	Pin, Hinge, Front	49	108673X	Bracket, Susp., Rear, L.H.
16	4921H	Spring, Retainer	50	STD533707	* Bolt, Carriage 3/8-16 x 3/4
18	109835X	Pin, Hinge, Rear	51	105857X	Bracket, Susp., Rear, R.H.
20	STD541431	* Nut, Lock 5/16-18	--	108682X	Decal, Belt Installation
21	109598X	Bracket, Lift R.H.	--	3713J	Decal, Instruction, Caution
22	109597X	Bracket, Lift L. H.	--	121343X	Decal, Cut Finger
23	STD533107	* Bolt, Carriage 5/16-18 x 3/4	--	122217X	Replacement Deck Assembly (Complete)
25	109503X	Support, Arm			
26	109504X	Stop, Deck, Front			
29	STD523722	* Bolt 3/8-16 x 2			
30	127162X	Arm, Idler			
31	106902X	Spacer			
32	123688X	Pulley, Idler			
33	106513X	Washer, Wear 1/16"			
34	110445X	Plate, Support Mandrel L.H.			

*STANDARD HARDWARE - - PURCHASE LOCALLY

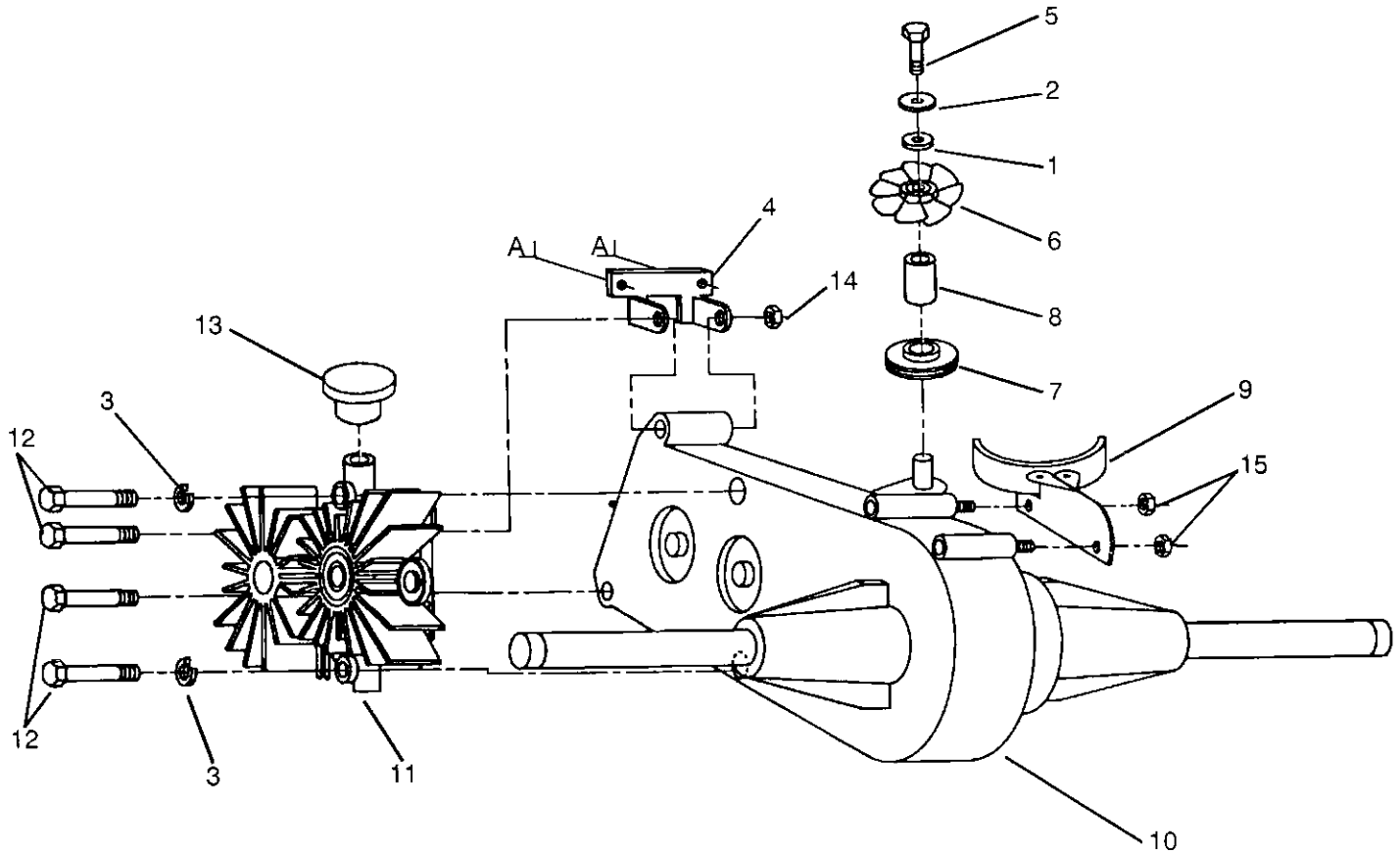
NOTE: All component dimensions given in U.S. inches
1 inch = 25.4 mm



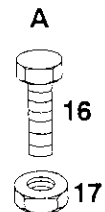
REPAIR PARTS

12.5 HP 38" RIDING LAWN TRACTOR - - MODEL NUMBER 917.255551

TRANSAXLE AND PUMP ASSEMBLY



KEY NO.	PART NO.	DESCRIPTION
1	19092016	Washer 9/32 x 1-1/4 x 16 Gauge
2	STD551125	* Washer, Lock, Heavy Helical Spring
3	STD551131	* Washer, Lock
4	121188X	Bracket, Pnt. Mounting, Differential
5	STD522507	* Bolt, Hex 1/4 - 20 UNC x 3/4
6	126578X	Fan, Hydro, 7"
7	126579X	Pulley, Transaxle
8	121211X	Standoff, Fan, Hydro
9	126581X	Guard Assembly, Belt
10	---	Differential Assembly (See pages 46 & 47)
11	---	Pump Assembly (See page 45)
12	STD523145	* Bolt, Hex, Fin 5/16 - 18 UNC x 4.5
13	121323X	Reservoir Pump
14	STD541431	* Nut, Crownlock 5/16 - 18
15	73680400	Nut, Crownlock 1/4 - 20 UNC
16	STD523707	* Bolt 3/8 - 16 x 3/4
17	STD541437	* Nut 3/8 - 16 UNC



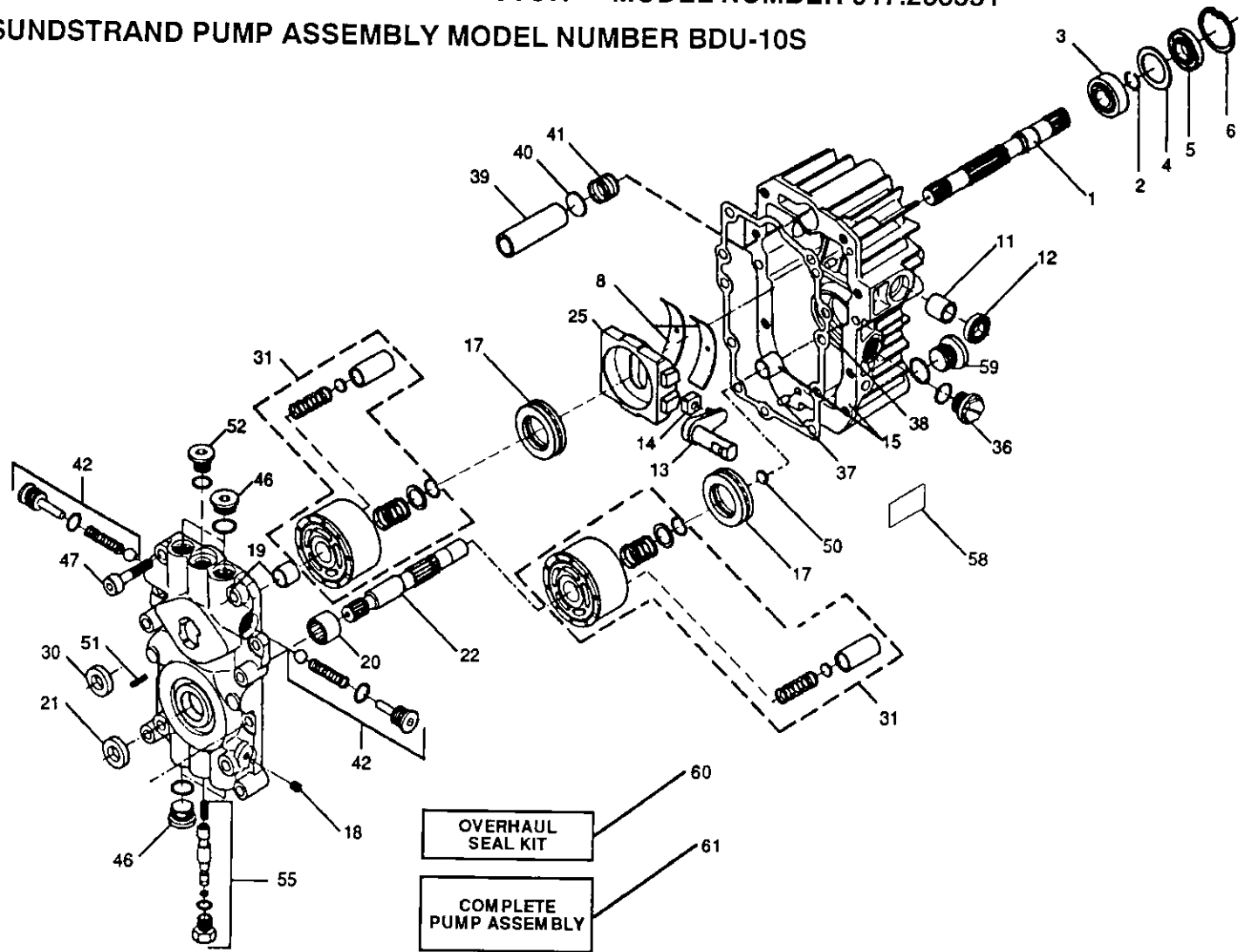
*STANDARD HARDWARE - - PURCHASE LOCALLY

NOTE: All component dimensions given in U.S. inches. 1 inch = 25.4 mm

REPAIR PARTS

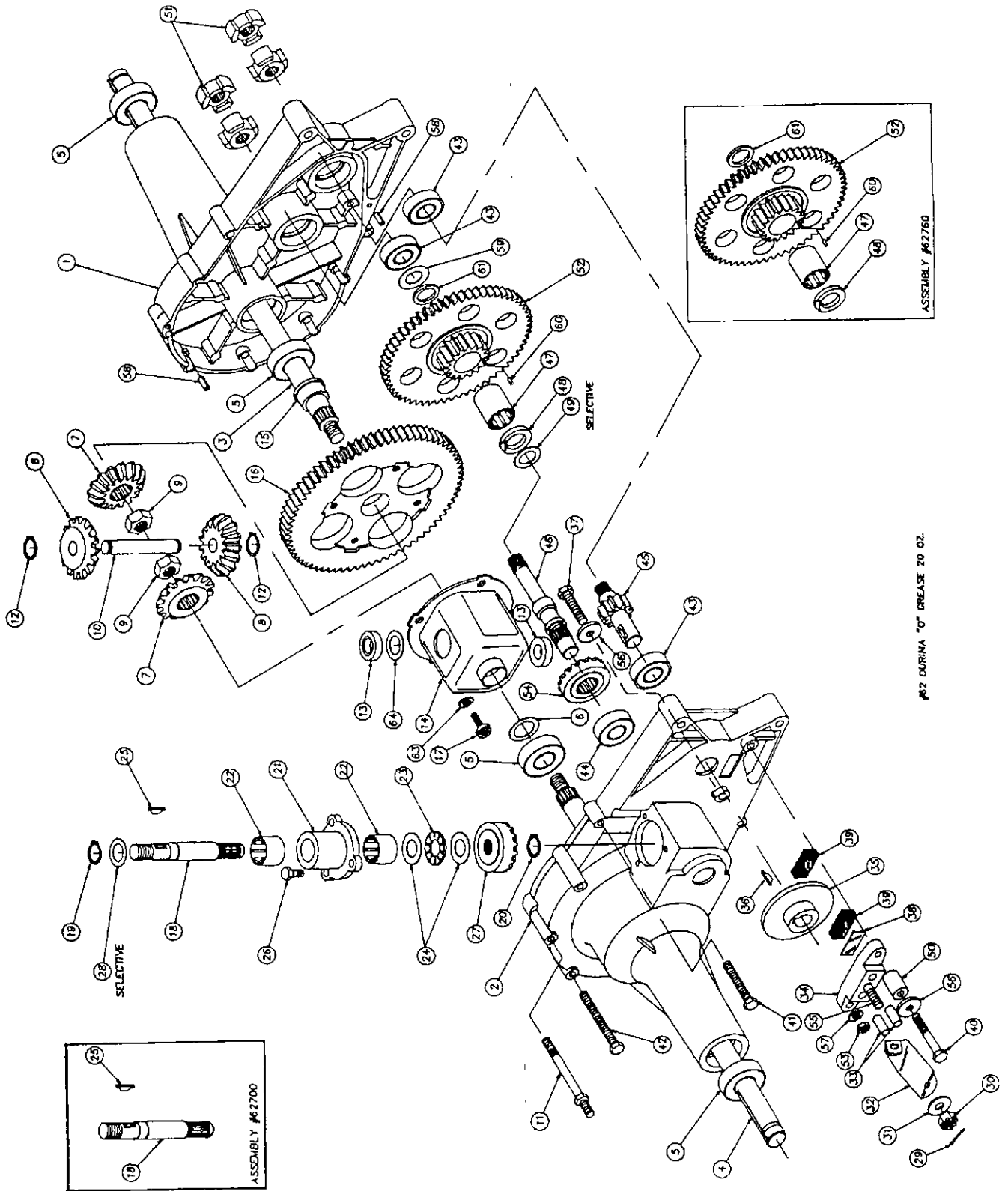
12.5 HP 38" RIDING LAWN TRACTOR - - MODEL NUMBER 917.255551

SUNDSTRAND PUMP ASSEMBLY MODEL NUMBER BDU-10S



KEY NO.	PART NO.	DESCRIPTION	KEY NO.	PART NO.	DESCRIPTION
1	122756X	Shaft, Pump	32	127150X	Block Kit, Cylinder (MOTOR)
2	122716X	* Ring, Retaining	36	127151X	Plug, Plastic
3	122745X	Bearing, Ball	37	122786X	Pin, St. Hdls.
4	122715X	* Spacer	38	122718X	* Gasket, Center Section
5	122700X	* Seal, Lip	39	122731X	Filter
6	122699X	* Ring, Retaining	40	122730X	Washer, Thrust
8	122767X	Bearing, Cradle	41	122728X	Spring, Helical Compression
11	122747X	Bearing, Journal	42	127152X	Check Valve Kit
12	122717X	* Seal, Lip	46	122787X	Plug, St. Thd.
13	122748X	Arm, Trunnion	47	122752X	Screw Socket Head Cap
14	122749X	Guide, Slot	50	122788X	Washer, Thrust
15	127146X	Housing Kit, Transmission	51	122789X	Pin, Spiral
17	122770X	Bearing, Thrust Ball	52	122754X	Plug, St. Thd.
18	122771X	Plug, Pipe	55	127153X	Bypass Valve Kit
19	127147X	Center Section Kit	58	122727X	Adhesive Label, Bar Coded
20	122773X	Bearing, Needle	59	122790X	Plug, St. Thd.
21	122722X	* Seal, Lip	60	127154X	Overhaul Seal Kit, BDU-10
22	122750X	Shaft, Motor			Includes: items marked with * and
25	127148X	Swashplate, Variable			O-Rings for Check Valves and
30	122723X	* Seal, Lip			Bypass Valve
31	127149X	Block Kit, Cylinder (PUMP)	61	121430X	Complete Pump Assembly

REPAIR PARTS
12.5 HP 38" RIDING LAWN TRACTOR -- MODEL NUMBER 917.255551
AGRI-FAB TRANSAXLE MODEL NUMBER 486.121431X



REPAIR PARTS

12.5 HP 38" RIDING LAWN TRACTOR - - MODEL NUMBER 917.255551

AGRI-FAB TRANSAXLE MODEL NUMBER 486.121431X

KEY NO.	PART NO.	DESCRIPTION	KEY NO.	PART NO.	DESCRIPTION
1	122614X	Housing, Half L.H.	36	123065X	Key, Hi-Pro 3/16 x 5/8"
2	122615X	Housing, Half R.H.	37	122666X	Screw, Hex 1/4-20 x 1.50
3	122616X	Axle L.H.	38	122667X	Plate, Puck
4	122620X	Axle R.H.	39	122668X	Puck, Brake
5	122621X	Bearing, Ball	40	123066X	Screw, Hex W/Patch 1/4-20 x 2.00
6	122622X	Washer, Flat 3/4 x 1-1/8 x .030	41	122670X	Screw, Hex Self-Tap 1/4-20 x 2.00
7	122623X	Gear, Miter	42	122671X	Screw, Hex Self-Tap 1/4-20 x 3.00
8	122624X	Gear, Miter	43	126982X	Bearing, Ball
9	122625X	Nut, Hex Jam W/Patch 1/2-20	44	122673X	Bearing, Ball
10	122626X	Shaft, Cross	45	122674X	Shaft, Pinion W/11 Tooth Gear
11	122688X	Screw, Stud	46	122675X	Shaft, Drive
12	122629X	Snap, Ring	47	123059X	Bearing, Needle
13	122631X	Bearing, Thrust	48	123060X	Bronze Thrust Brg. 5/8 x 1-1/4 x 7/64
14	122633X	Housing Assembly, Differential	49	122654X	Washer, Flat .62 x 1.0 x .040
15	122634X	Bearing, Flange	---	123061X	Washer, Flat .62 x 1.0 x .050
16	122640X	Gear, Differential 72 Tooth	50	122689X	Spacer
17	122641X	Bolt, Torx Head 1/4-28 x 5/8"	51	121839X	Coupling
18	122642X	Shaft, Input	52	126975X	Gear, 60 and 17 Tooth
19	122643X	Snap, Ring	53	122682X	Nut, Hex 1/4-20
20	122644X	Retaining Ring 7/16"	54	122683X	Gear, Drive Pinion 17 Tooth
21	122645X	Housing, Input Bearing	55	122684X	Bolt, Square Head
22	122646X	Bearing, Needle	56	122685X	Washer 15/16 x .265 x .125
23	122647X	Bearing, Thrust	57	122686X	Washer 1/4" Spring Lock
24	122648X	Washer, Flat 5/8 x 1-1/8 x .030	58	122687X	Pin, Roll 3/16" x 1/2"
25	122649X	Key, Hi-Pro 3/32 x 5/8	59	122652X	Washer, Flat .62 x 1.0 x .030
26	122650X	Screw, Hex W/Patch 1/4-20 x 3/4	60	123062X	Pin, Dowel 3/32 x 1/4
27	122651X	Gear, Input Pinion 17 Tooth	61	123063X	Seal, Grease
28	123061X	Washer, Flat .62 x 1 x .05	62	126976X	Shell, Durina-O Grease (20oz.)
---	122678X	Washer, Flat .62 x 1.125 x .060	63	126977X	Washer, Head Spring Lock 1/4"
---	122654X	Washer, Flat .62 x 1 x .040	64	126978X	Washer, Flat .50 x 1.0 x .020
29	122656X	Pin, Cotter	---	126979X	Washer, Flat .50 x 1.0 x .030
30	122653X	Nut, Castile 5/16-24	65	126980X	Assembly, Gear, Reduction
31	122659X	Washer, Flat .343 x .88 x .062	66	126981X	Assembly, Shaft, Input
32	122660X	Arm, Brake Actuator	---	121431X	Transaxle Assembly Complete
33	122662X	Pin, Brake Actuating			
34	122663X	Brake, Yoke			
35	122664X	Disc, Brake			

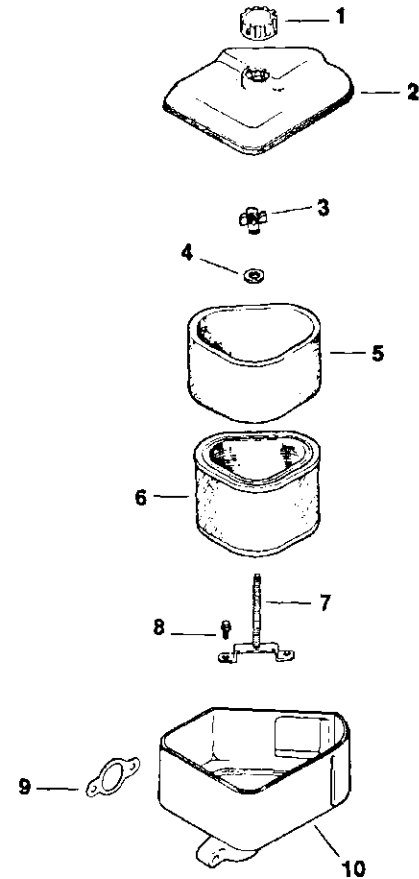
NOTE: All component dimensions given in U.S. inches
1 inch = 25.4 mm

REPAIR PARTS

12.5 HP 38" RIDING TRACTOR - - MODEL NUMBER 917.255551
 ENGINE KOHLER - MODEL NUMBER CV12.5S, TYPE NUMBER 1438

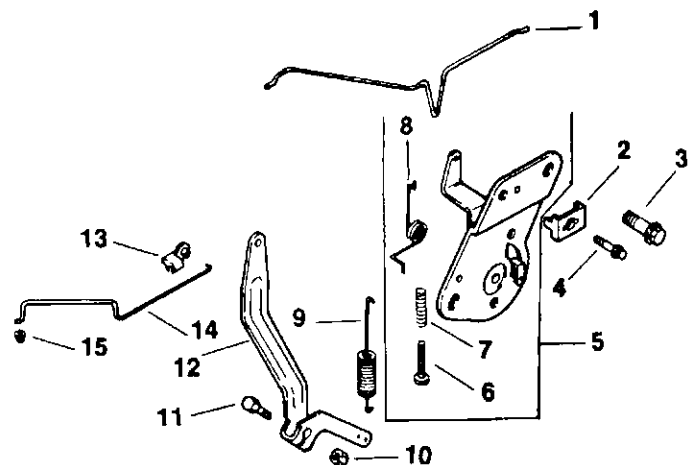
AIR INTAKE/FILTRATION

- | | | |
|----|-----------|-------------------------|
| 1 | 12 341 01 | Knob, air cleaner cover |
| 2 | 12 096 06 | Cover, air cleaner |
| 3 | 12 100 01 | Wing nut |
| 4 | X-25-63 | Washer, plain 1/4 |
| 5 | 12 083 08 | Precleaner, element |
| 6 | 12 083 05 | Element, air cleaner |
| 7 | 12 072 03 | Stud, mounting plate |
| 8 | 12 086 01 | Screw, mtg. plate stud |
| 9 | 12 041 02 | Gasket, air cleaner |
| 10 | 12 094 01 | Base, air cleaner |



ENGINE CONTROLS

- | | | |
|----|------------|--|
| 1 | 12 079 03 | Linkage, choke |
| 2 | 12 237 01 | Clamp, cable |
| 3 | SM-0645020 | Screw, hex. hd. M6 x 1.0 x 20 (2) |
| 4 | SM-0545016 | Screw, cable clamp |
| 5 | 12 536 01 | Control, speed assembly (Includes 6-8) |
| 6 | SM-0443025 | Screw |
| 7 | 12 089 11 | Spring |
| 8 | 12 089 04 | Spring, choke return |
| 9 | 12 089 12 | Spring, governor |
| 10 | SM-0641060 | Nut, governor arm M6 x 1.0 |
| 11 | SM-0642025 | Screw, governor arm M6 x 1.0 x 25 |
| 12 | 12 090 05 | Lever, governor |
| 13 | 25 158 09 | Bushing |
| 14 | 12 079 01 | Linkage, throttle |
| 15 | 25 158 08 | Bushing |

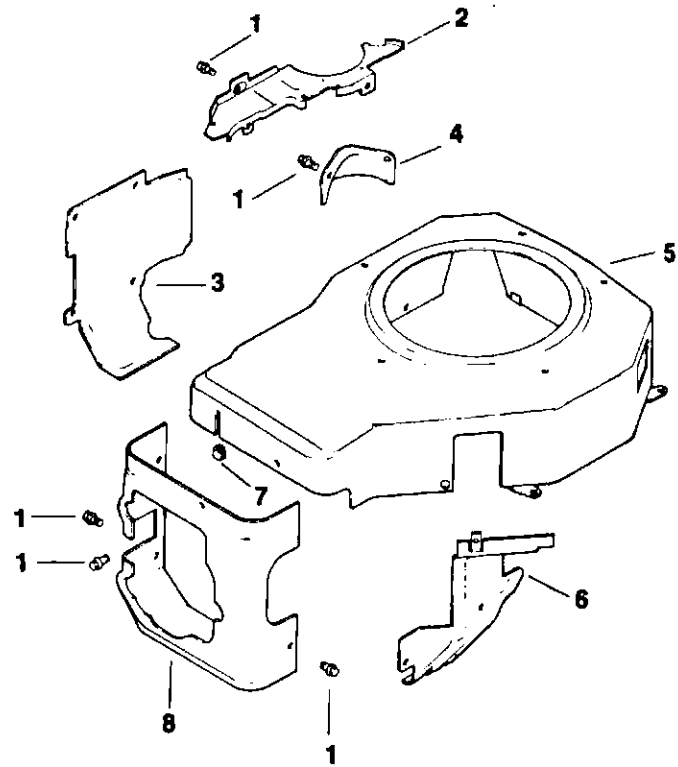


REPAIR PARTS

12.5 HP 38" RIDING TRACTOR - - MODEL NUMBER 917.255551
ENGINE KOHLER - MODEL NUMBER CV12.5S, TYPE NUMBER 1438

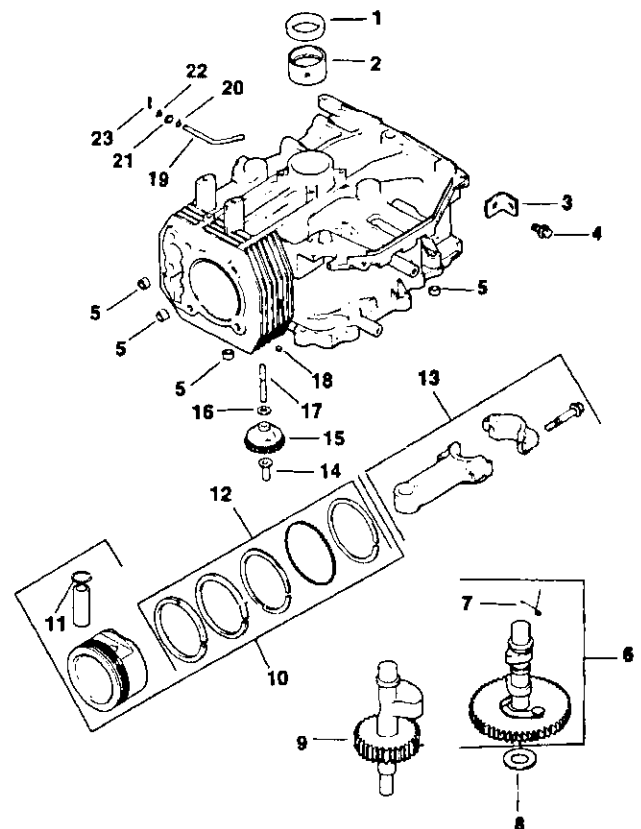
BLOWER HOUSING & BAFFLES

- | | | |
|---|------------|------------------------------------|
| 1 | SM-0545010 | Screw, mounting M5 x 0.8 x 10 (14) |
| 2 | 12 146 01 | Plate, blower housing |
| 3 | 12 063 01 | Baffle, cylinder barrel |
| 4 | 12 096 01 | Cover, starter |
| 5 | 12 027 04 | Housing, blower |
| 6 | 12 063 02 | Baffle, carburetor |
| 7 | 12 313 03 | Grommet, blower housing |
| 8 | 12 063 03 | Baffle, cylinder head |



CRANKCASE

- | | | |
|----|------------|--|
| | | Block, cylinder (Use Short block part # 12 522 02) |
| 1 | 12 032 03 | Seal, crankshaft |
| 2 | 12 030 01 | Bearing, crankshaft (Std.) (Flywheel end) |
| | 12 030 02 | Bearing, crankshaft (.25) |
| | 12 030 03 | Bearing, crankshaft (.50) |
| 3 | 12 445 02 | Strap, lifting |
| 4 | SM-0839025 | Screw, lifting strap |
| 5 | 12 380 03 | Dowel, locating (4) |
| 6 | 12 010 02 | Camshaft assembly (Includes 7) |
| 7 | 12 089 05 | Spring, actuating |
| 8 | 12 422 01 | Shim, camshaft |
| | 12 422 02 | Shim, camshaft (A.R.) |
| | 12 422 03 | Shim, camshaft (A.R.) |
| | 12 422 11 | Shim, camshaft (A.R.) |
| | 12 422 12 | Shim, camshaft (A.R.) |
| | 12 422 06 | Shim, camshaft (A.R.) |
| | 12 422 07 | Shim, camshaft (A.R.) |
| 9 | 12 144 04 | Shaft, balance |
| 10 | 12 874 01 | Piston w/Ring Set (Std.) |
| | 12 874 02 | Piston w/Ring Set (.25) |
| | 12 874 03 | Piston w/Ring Set (.50) |
| 11 | 12 018 02 | Retainer, piston pin (2) |
| 12 | 12 108 01 | Ring Set (Std.) |
| | 12 108 02 | Ring Set (.25) |
| | 12 108 03 | Ring Set (.50) |
| 13 | 12 067 01 | Connecting Rod (Std.) |
| | 12 067 02 | Connecting Rod (.25) |
| 14 | 12 380 01 | Pin, governor regulating |
| 15 | 12 043 05 | Gear, governor assembly |
| 16 | SM-0631005 | Washer, governor gear thrust |
| 17 | 12 144 02 | Shaft, governor gear |
| 18 | 52 139 09 | Plug, cup |
| 19 | 12 144 01 | Shaft, governor cross |
| 20 | SM-0631015 | Washer, governor shaft |
| 21 | 12 032 01 | Seal, governor cross shaft |
| 22 | X-25-102 | Washer, plain |
| 23 | 12 380 04 | Pin, governor hitch |

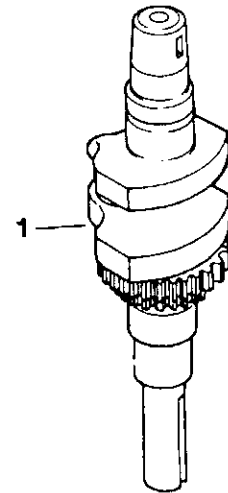


REPAIR PARTS

12.5 HP 38" RIDING TRACTOR - - MODEL NUMBER 917.255551
 ENGINE KOHLER - MODEL NUMBER CV12.5S, TYPE NUMBER 1438

CRANKSHAFT

- 1 12 014 02 Crankshaft

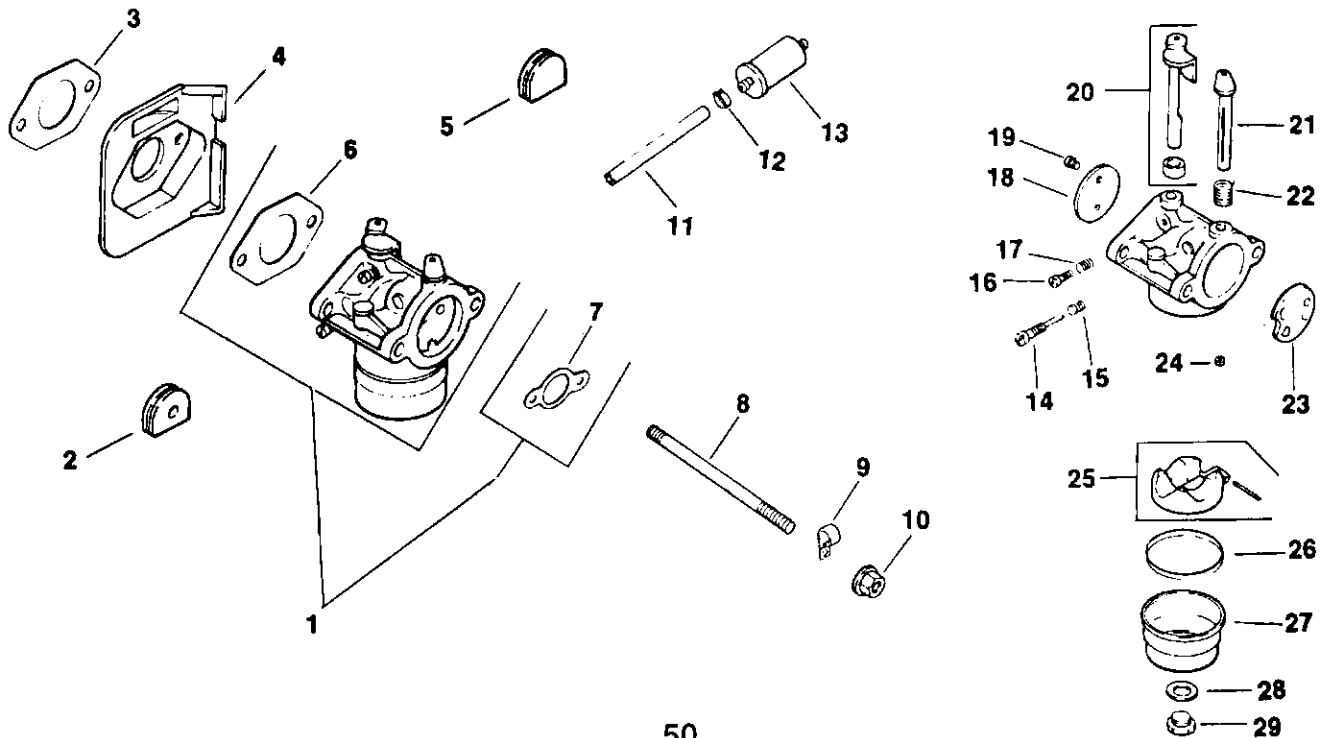


FUEL SYSTEM

- | | | | | | |
|----|------------|--|----|-----------|--------------------------------|
| 1 | 12 853 01 | Kit, carburetor w/gaskets (Includes 6,7,14-29) | 17 | 12 089 09 | Spring, idle fuel |
| 2 | 12 313 05 | Grommet | 18 | 12 146 03 | Plate, throttle |
| 3 | 12 041 01 | Gasket, carburetor (2) | 19 | 25 086 27 | Screw, throttle plate (2) |
| 4 | 12 265 01 | Deflector, heat | 20 | 12 144 09 | Shaft, throttle w/lever & seal |
| 5 | 12 313 01 | Grommet | 21 | 12 144 08 | Shaft, choke |
| 6 | 12 041 01 | Gasket, carburetor | 22 | 12 089 10 | Spring, choke return |
| 7 | 12 041 02 | Gasket, air filter | 23 | 12 146 02 | Plate, choke |
| 8 | M-0629122 | Stud, carburetor M6 x 1.0 x 110 (2) | 24 | 12 337 01 | Jet, main |
| 9 | 48 154 01 | Clip, fuel line | 25 | 12 757 02 | Kit, float |
| 10 | SM-0641060 | Nut, carburetor M6 x 1.0 (2) | 26 | 12 041 05 | Gasket, bowl |
| 11 | 25 353 20 | Hose, fuel | 27 | 12 104 01 | Bowl, fuel |
| 12 | X-426-9 | Clamp, fuel line (2) | 28 | 12 041 06 | Gasket, bowl ret. screw |
| 13 | 45 050 01 | Filter, fuel | 29 | 12 086 05 | Screw, fuel bowl |
| 14 | 12 368 01 | Needle, idle | | | |
| 15 | 12 089 09 | Spring, idle speed | | | |
| 16 | 12 086 04 | Screw, idle speed adj. | | | |

NOT ILLUSTRATED

- 12 757 01 Kit, carburetor repair
- 12 755 09 Kit, high altitude jet



REPAIR PARTS

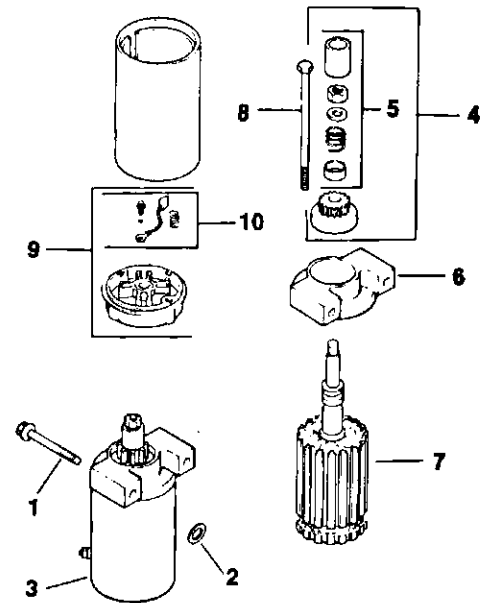
12.5 HP 38" RIDING TRACTOR - - MODEL NUMBER 917.255551 ENGINE KOHLER - MODEL NUMBER CV12.5S, TYPE NUMBER 1438

STARTING SYSTEM

- | | | |
|----|------------|--|
| 1 | SM-0839065 | Screw, bendix starter M8 x 1/25 x 65.5 (2) |
| 2 | 12 468 01 | Washer (2) |
| 3 | 12 098 05 | Starter assembly (Includes 4-10) |
| 4 | 12 755 12 | Kit, drive (Includes 5) |
| 5 | 12 755 06 | Kit, drive parts |
| 6 | 12 227 01 | Cap, drive end |
| 7 | 12 170 02 | Armature |
| 8 | 12 086 02 | Screw, hex. flange |
| 9 | 12 243 01 | Cap, commutator end (Includes 10) |
| 10 | 48 755 15 | Kit, brush |

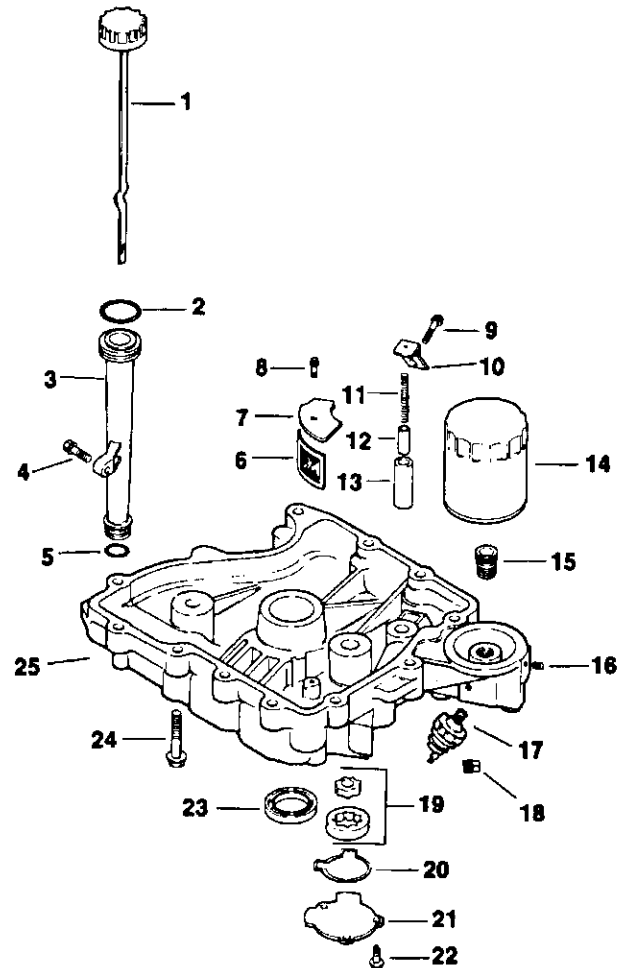
NOT ILLUSTRATED

- | | |
|-----------|--------------------|
| 52 357 01 | Lubricant, starter |
|-----------|--------------------|



OIL PAN/LUBRICATION

- | | | |
|----|------------|---|
| 1 | 12 038 01 | Dipstick |
| 2 | 12 153 02 | O-Ring, upper oil fill tube |
| 3 | 12 123 04 | Tube, oil fill |
| 4 | SM-0545020 | Screw, oil fill tube M5 x 0.8 x 20 |
| 5 | 12 153 01 | O-Ring, lower oil fill tube |
| 6 | 12 162 02 | Screen, oil pick-up |
| 7 | 12 096 03 | Cover, oil pick-up screen |
| 8 | SM-0545016 | Screw, screen cover |
| 9 | SM-1039025 | Screw, oil pump relief valve bracket M10 x 1.5 x 25 |
| 10 | 12 126 02 | Bracket, oil pump relief bracket |
| 11 | 12 089 03 | Spring, oil pump relief valve |
| 12 | 12 462 01 | Piston, oil pump relief valve |
| 13 | 12 208 01 | Body, oil pump relief valve |
| 14 | 52 050 02 | Filter, oil |
| 15 | 12 136 01 | Adapter |
| 16 | X-75-23 | Plug |
| 17 | 52 099 06 | Switch, oil pressure |
| 18 | X-75-10 | Plug, sq. hd. solid 3/8 N.P.T.F. (2) |
| 19 | 12 393 01 | Pump, oil |
| 20 | 12 032 04 | O-Ring, oil pump cover |
| 21 | 12 096 02 | Cover, oil pump |
| 22 | SM-0545016 | Screw, oil pump cover M5 x 0.8 x 16 (3) |
| 23 | 12 032 03 | Seal, oil (P.T.O. end) |
| 24 | SM-0839045 | Screw, oil pan M8 x 1.25 x 45 (12) |
| 25 | 12 199 09 | Pan, oil |

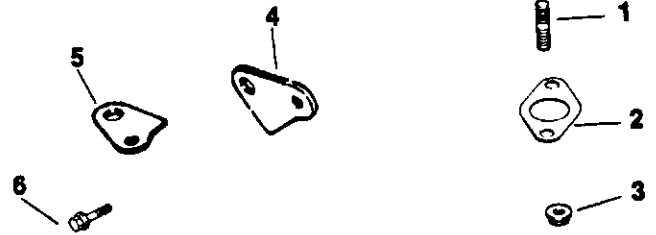


REPAIR PARTS

12.5 HP 38" RIDING TRACTOR - - MODEL NUMBER 917.255551 ENGINE KOHLER - MODEL NUMBER CV12.5S, TYPE NUMBER 1438

EXHAUST

- 1 M-0829036 Stud, exhaust manifold M8 x 1.25 x 20 (2)
- 2 12 041 03 Gasket, exhaust manifold
- 3 SM-0841080 Nut, muffler mtg M8 x 1.25 (2)
- 4 12 126 11 Bracket, muffler
- 5 12 445 01 Strap, lifting
- 6 SM-0645025 Screw, lifting strap M6 x 1.0 x 25 (3)



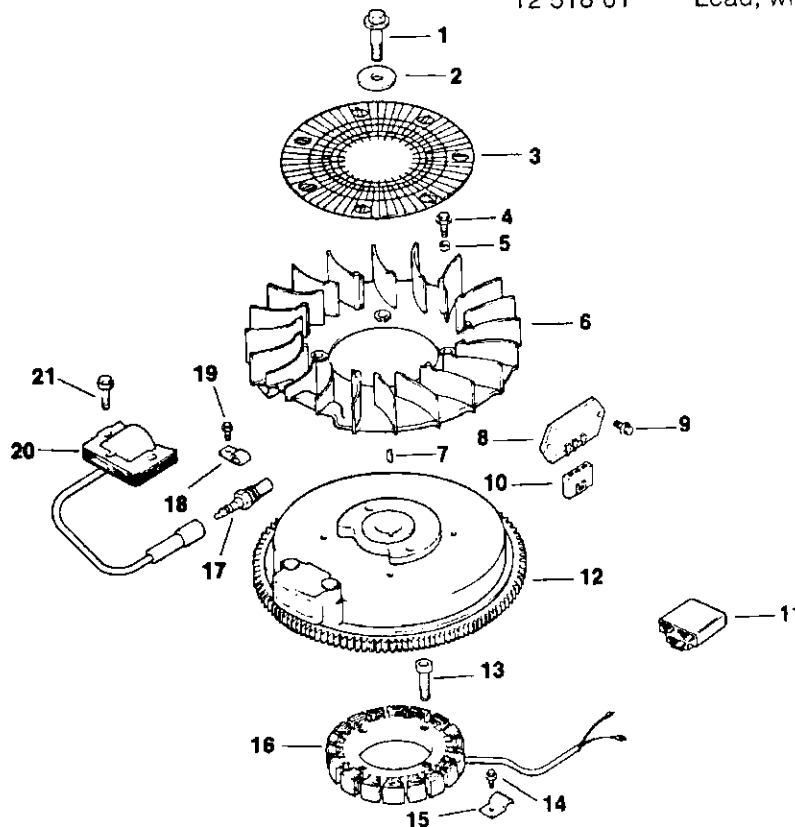
Short Block 12 522 02
Gasket Set 12 755 01

IGNITION/ELECTRICAL

- | | | | |
|---------------|--|---------------|--|
| 1 SM-1040045 | Screw, flywheel mounting | 14 SM-0545010 | Screw, stator harness clip M5 x 0.8 x 10 |
| 2 52 468 15 | Washer, flywheel mtg. screw | 15 12 154 02 | Clip, stator harness |
| 3 12 162 01 | Screen, grass | 16 41 085 07 | Stator - 15 amp |
| 4 SM-0639016 | Screw, fan mounting (4) | 17 12 132 02 | Spark plug |
| 5 12 112 01 | Spacer, fan (4) | 18 X-728-1 | Clip, kill lead |
| 6 12 157 01 | Fan | 19 SM-0545010 | Screw, lead clip |
| 7 X-42-15 | Key | 20 12 584 01 | Module, ignition |
| 8 41 403 09 | Rectifier-regulator | 21 SM-0545020 | Screw, ignition module M5 x 0.8 x 20 (2) |
| 9 SM-0639016 | Screw, rectifier-regulator M6 x 1.0 x 16 (2) | | |
| 10 236602 | Connector, rectifier-regulator | | |
| 11 236473 | Connector (3 contact) | | |
| 12 12 025 01 | Flywheel assembly | | |
| 13 SM-0544025 | Screw, stator mounting M5 x 0.8 x 25 (4) | | |

NOT ILLUSTRATED

- 25 518 05 Lead, black, rectifier to connector (5" - 14 gauge uninsulated push on tab terminals)
- 12 518 01 Lead, white, ground to kill

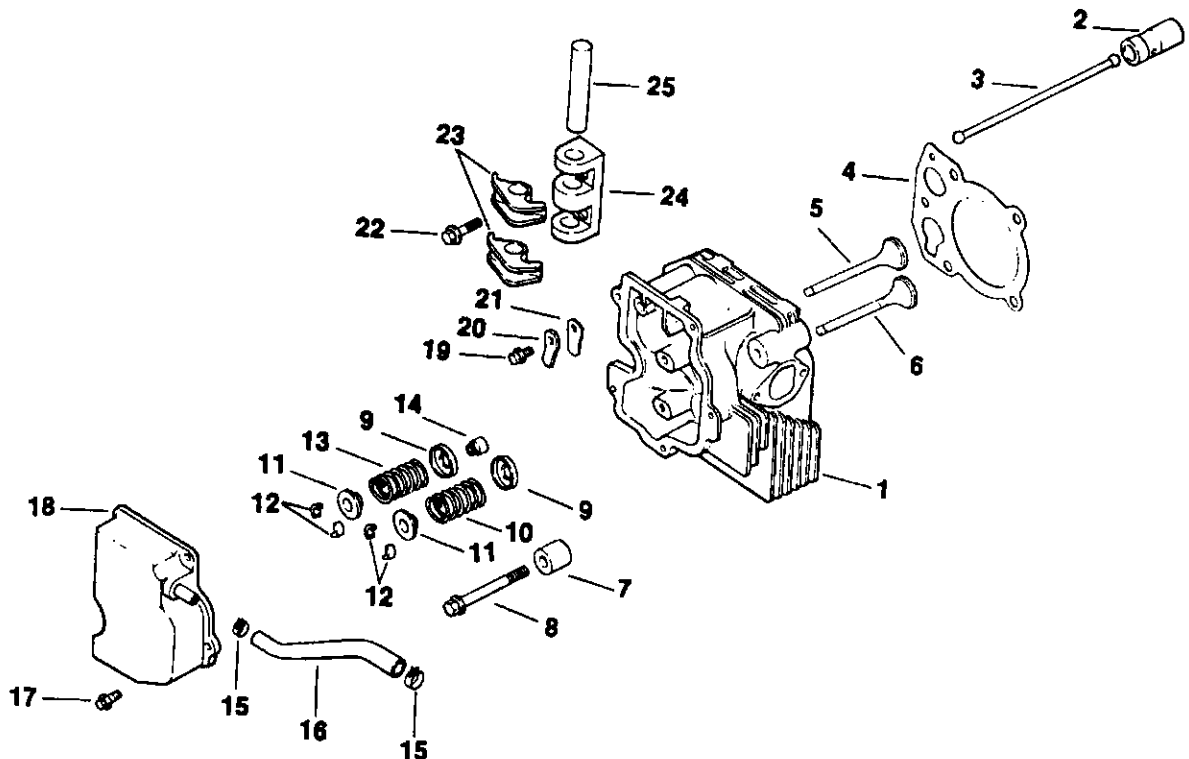


REPAIR PARTS

12.5 HP 38" RIDING TRACTOR - - MODEL NUMBER 917.255551
 ENGINE KOHLER - MODEL NUMBER CV12.5S, TYPE NUMBER 1438

CYLINDER HEAD/VALVE/BREATHER

1	12 318 01	Head, cylinder	16	12 326 03	Hose, breather
2	12 351 01	Lifter, valve (2)	17	SM-0645020	Screw, valve cover M6 x 1.0 x 20 (3)
3	12 411 01	Rod, push (2)	18	12 096 07	Cover, valve w/nipple
4	12 041 04	Gasket, cylinder head	19	SM-0545010	Screw, breather reed ret. M5 x 0.8 x 1
5	12 017 01	Valve, intake (Std.)	20	12 018 01	Retainer, breather reed
	12 017 02	Valve, intake (.25)	21	12 402 01	Reed, breather
6	12 016 01	Valve, exhaust (Std.)	22	SM-0642025	Screw, rocker bridge M6 x 1.0 x 25 (2)
	12 016 02	Valve, exhaust (.25)	23	12 186 01	Arm, rocker (2)
7	12 112 04	Spacer, head bolt exhaust port	24	12 126 05	Bridge, rocker arm
8	M-1040080	Screw, cylinder head M10 x 1.5 x 80 (5)	25	12 144 03	Shaft, rocker arm
9	52 018 01	Retainer, spring (2)	NOT ILLUSTRATED		
10	12 089 15	Spring, exhaust valve (green)	12 755 02	Kit, cylinder head	
11	12 173 01	Cap, valve spring (2)	12 522 02	Short Block	
12	12 755 03	Kit, retainer (2)	12 755 01	Gasket Set	
13	12 089 01	Spring, intake valve			
14	12 032 02	Seal, valve stem			
15	X-426-9	Clamp, hose (2)			



SERVICE NOTES