

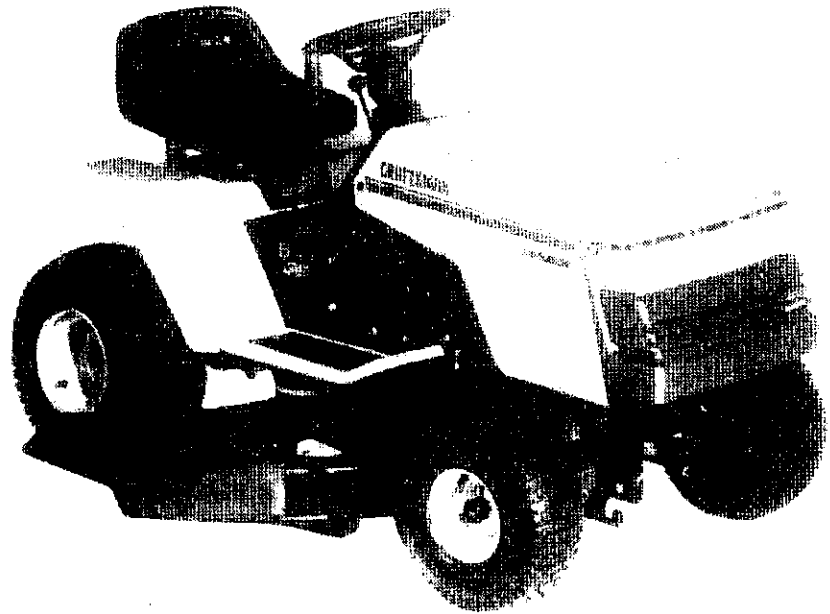
SEARS

**OWNER'S
MANUAL**

**MODEL NO.
917.255572**

Caution:
Read and follow
all Safety Rules
and Instructions
Before Operating
This Equipment

3One™
Convertible



CRAFTSMAN®

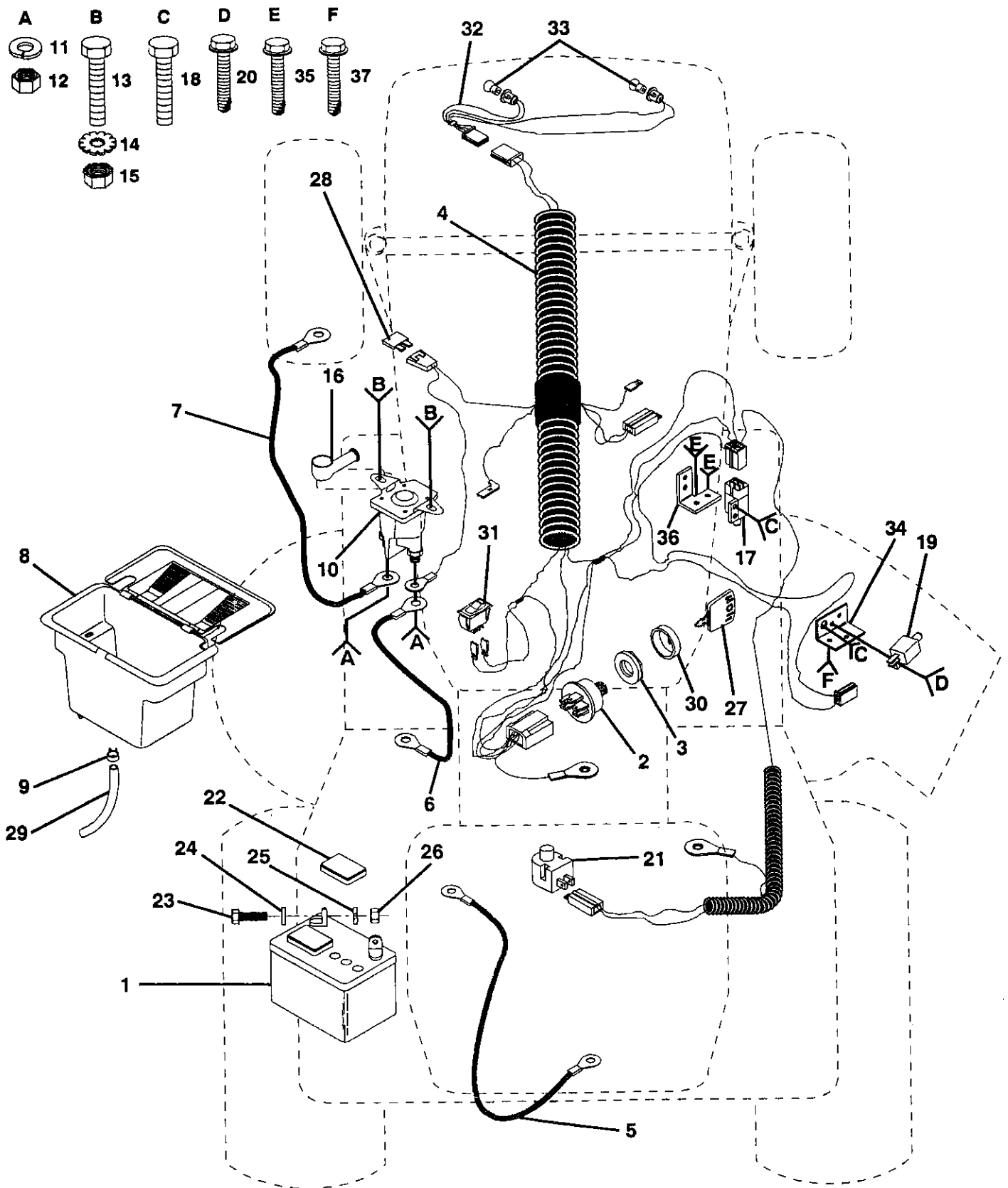
**12.5 HP IC
ELECTRIC START
3 in One Convertible
38" MOWER DECK
6 SPEED TRANSAXLE
LAWN TRACTOR**

- Assembly
- Operation
- Customer Responsibilities
- Service and Adjustment
- Repair Parts

REPAIR PARTS

12.5 HP 38" TRACTOR - - MODEL NUMBER 917.255572

ELECTRICAL



REPAIR PARTS

12.5 HP 38" TRACTOR - - MODEL NUMBER 917.255572

ELECTRICAL

| KEY NO. | PART NO. | DESCRIPTION | KEY NO. | PART NO. | DESCRIPTION |
|---------|-----------|---------------------------------|---------|-----------|---------------------------------|
| 1 | 121265X | Battery 12 Volt 25 Amp | 22 | 121264X | Caps Battery 25/30 Amp |
| 2 | STD365402 | * Switch Ign 5 Term Wo/wash/nut | 23 | 74760412 | Bolt Hex Hd 1/4-20unc X 3/4 |
| 3 | 124211X | Nut Ignition | 24 | STD551025 | * Washer 9/32 X 5/8 X 16 Ga |
| 4 | 132017 | Harness Ign Bs Dash Headlights | 25 | STD551125 | * Washer Lock Hvy Helical 1/4 |
| 5 | 4207J | Cable Ground 6ga 12"black | 26 | STD541025 | * Nut Fin Hex 1/4-20 Unc |
| 6 | 132202 | Cable Battery 6 Ga 42"red | 27 | 109310X | Key Ign Molded Craftsman |
| 7 | 4799J | Cable Battery 6ga 11"red | 28 | 108824X | Fuse 30 Amp Auto Green |
| 8 | 129965 | Case Battery Hinge Mechanical | 29 | 105687X | Tube Plastic 9" |
| 9 | 109596X | Clamp Hose Olive | 30 | 123620X | Cover Sw Key Blk 1 25 Text Slit |
| 10 | 109081X | Solenoid | 31 | 110712X | Switch Light Blk Blk Red |
| 11 | STD551125 | * Washer Lock 1/4 | 32 | 127441X | Harness Socket Light |
| 12 | 73350400 | Nut Jam Hex 1/4-20 Unc | 33 | 7662J | Bulb Light #1141 |
| 13 | 74780408 | Bolt Fin Hex 1/4-20uncx1/2 Gr5 | 34 | 108236X | Bracket Switch Clutch |
| 14 | STD551225 | * Washer Lock Ext Tooth 1/4 | 35 | STD601005 | * Screw Tap Hex #10-24unc X 1/2 |
| 15 | STD541425 | * Nut Keps Hex 1/4-20 Unc | 36 | 130890 | Bracket Switch Interlock |
| 16 | 131563 | Cover Terminal Red | 37 | STD601005 | * Screw Tap Hex #10-24unc X 1/2 |
| 17 | 109553X | Switch Intlk Clutch Red 4 Term | | | |
| 18 | STD601005 | * Screw Tap Hex #10-24unc X 1/2 | | | |
| 19 | 104445X | Switch Intlk Clutch Red 2 Term | | | |
| 20 | STD601005 | * Screw Tap Hex #10-24unc X 1/2 | | | |
| 21 | 121305X | Switch Plunger Nc Gray | | | |

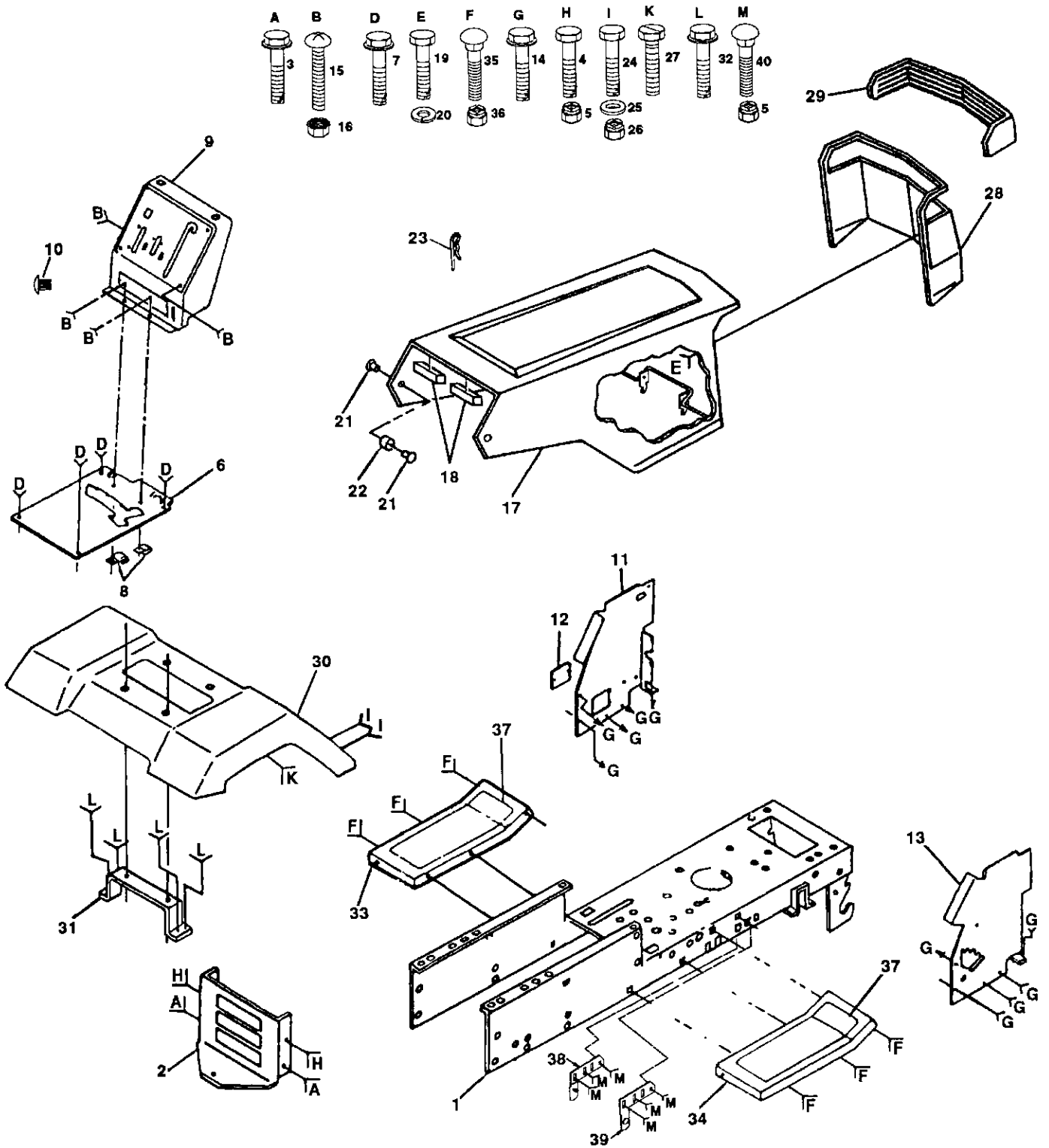
* STANDARD HARDWARE - - PURCHASE LOCALLY

NOTE: All component dimensions given in U.S. inches.
1 inch = 25.4 mm

REPAIR PARTS

12.5 HP 38" TRACTOR - - MODEL NUMBER 917.255572

CHASSIS AND ENCLOSURES



REPAIR PARTS

12.5 HP 38" TRACTOR - - MODEL NUMBER 917.255572

CHASSIS AND ENCLOSURES

| KEY NO. | PART NO. | DESCRIPTION | KEY NO. | PART NO. | DESCRIPTION |
|---------|------------|--------------------------------|---------|------------|---------------------------------------|
| 1 | 135034 | Chassis Weldment 12ga 38/42 | 22 | 124479X | Washer Nylon Blk 28x 75x 19 |
| 2 | 127866 | Drawbar Lt/yt 11 Ga | 23 | 4921H | Retainer Spring |
| 3 | 17490612 | Screw Thdrol 3/8-16x3/4 Ty-tt | 24 | STD523707 | * Bolt Fin Hex 3/8-16unc X 3/4 |
| 4 | STD523707 | * Bolt Fin Hex 3/8-16unc X 3/4 | 25 | 19131312 | Washer 13/32 X 13/16 X 12 Ga |
| 5 | STD541437 | * Nut Crownlock 3/8-16 Unc | 26 | STD541437 | * Nut Crownlock 3/8-16 Unc |
| 6 | 124464X012 | Saddle Silkscreen 6sp English | 27 | 17490608 | Screw Thdrol 3/8-16x1/2 Ty-tt |
| 7 | 17490608 | Screw Thdrol 3/8-16x1/2 Ty-tt | 28 | 123915X | Grille Grey |
| 8 | 2751R | Clip Line Fuel 13/32 Mtg Hole | 29 | 124029X | Lens Headlight Bar Clear |
| 9 | 123042X012 | Dash Silkscreened Sears Eng | 30 | 109872X417 | Fender Pnt |
| 10 | 5479J | Plug Button Blk 359 Dia | 31 | 109873X | Bracket Pnt Fender |
| 11 | 122795X | Panel Pnt Dash Lh | 32 | 17490612 | Screw Thdrol 3/8-16x3/4 Ty-tt |
| 12 | 121794X | Cover Access Black Square | 33 | 105465X417 | Footrest Pnt Lh Perf (silver) |
| 13 | 124031X012 | Panel Silkscr Dash Rh Weldment | 34 | 105464X417 | Footrest Pnt Rh Perf (silver) |
| 14 | 17490608 | Screw Thdrol 3/8-16x1/2 Ty-tt | 35 | STD533707 | * Bolt Rdhd Sht Sqnk 3/8-16 X3/4 |
| 15 | 74180512 | Screw Mach Trhd 5/16-18uncx3/4 | 36 | STD541437 | * Nut Crownlock 3/8-16 Unc |
| 16 | STD541431 | * Nut Keps 5/16-18 Unc | 37 | 105466X | Pad Footrest Rbr Sq Craftsman |
| 17 | 131445X417 | Hood Asm Pnt Weld Silver Powde | 38 | 134618 | Bracket, Asm. Pivot, L.H., Mower Rear |
| 18 | 126938X | Bumper Hood | 39 | 134617 | Bracket, Asm. Pivot, R.H., Mower Rear |
| 19 | STD512505 | * Bolt Fin Hex 1/4-20unc X 1/2 | 40 | STD533707 | Boit, Carriage 3/8-16 x 3/4 |
| 20 | STD551125 | * Washer Lock Hvy Helical 1/4 | | | |
| 21 | 122933X | Rivet Ratchet Nylon | | | |

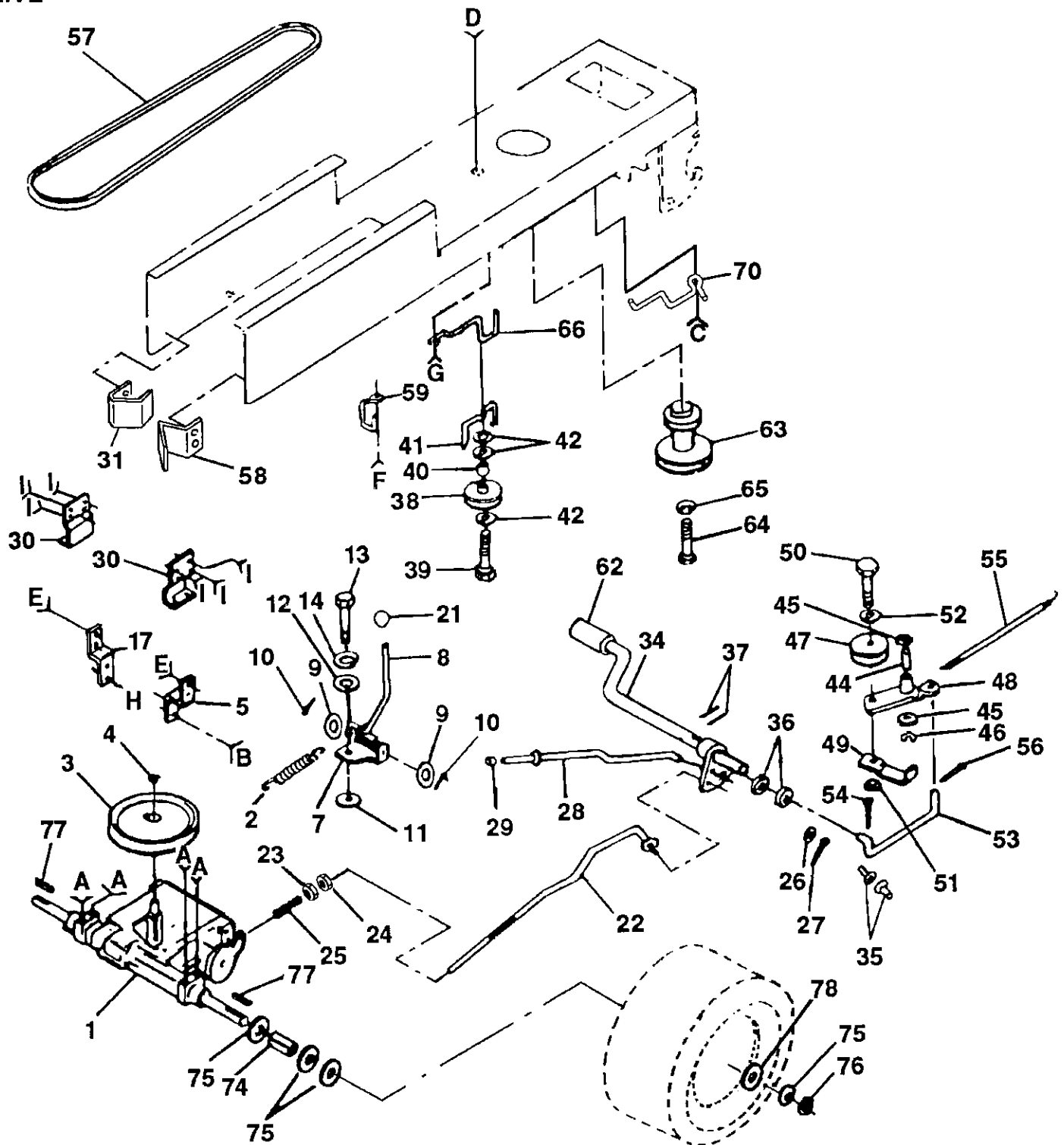
* STANDARD HARDWARE - - PURCHASE LOCALLY

NOTE: All component dimensions given in U.S. inches.
1 inch = 25.4 mm

REPAIR PARTS

12.5 HP 38" TRACTOR - - MODEL NUMBER 917.255572

DRIVE



- | | | | | | | | | |
|----------|----------|----------|----------|----------|----------|----------|----------|----------|
| A | B | C | D | E | F | G | H | I |
| | | | | | | | | |
| | | | | | | | | |
| | | | | | | | | |

REPAIR PARTS

12.5 HP 38" TRACTOR - - MODEL NUMBER 917.255572

DRIVE

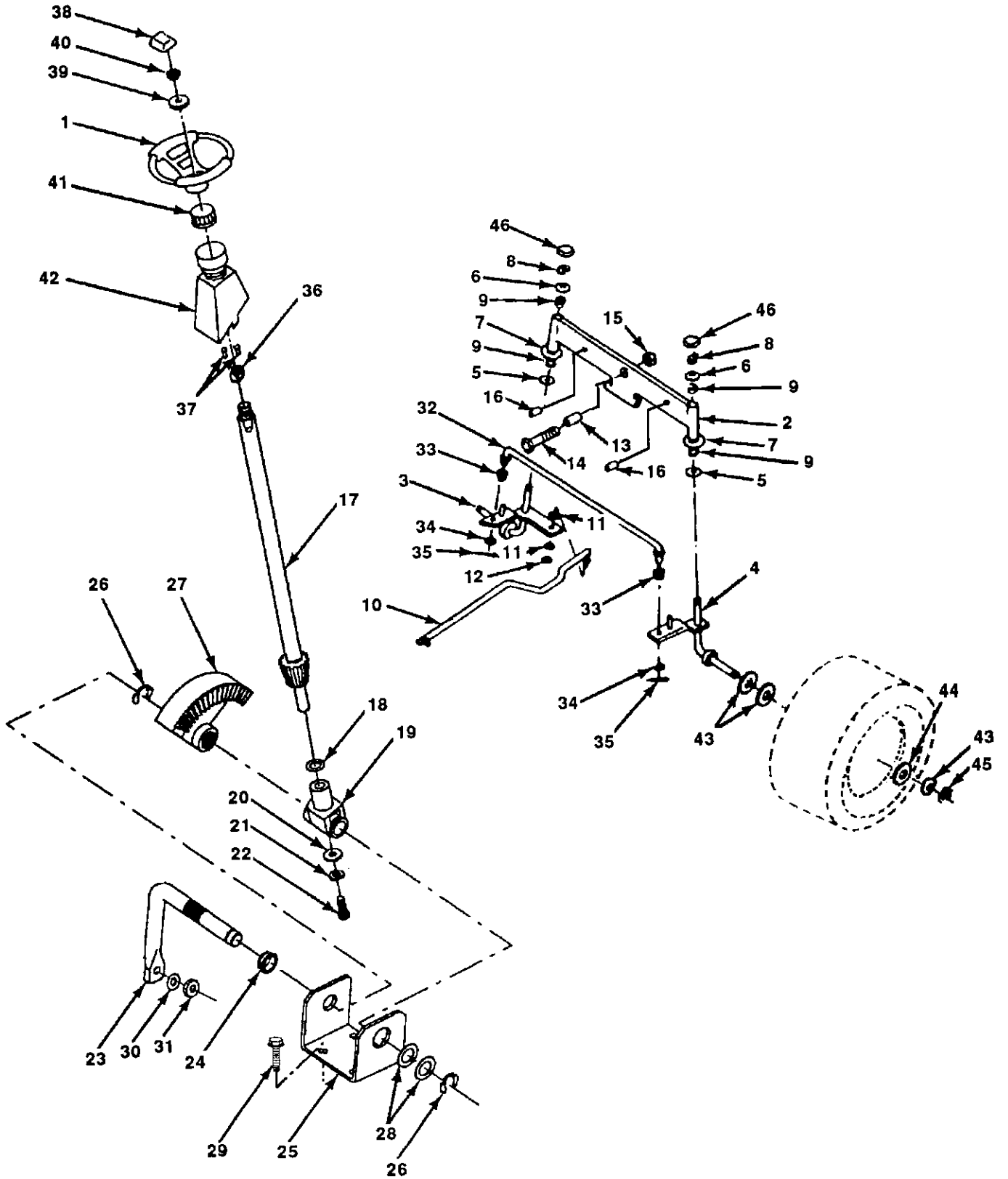
| KEY NO. | PART NO. | DESCRIPTION | KEY NO. | PART NO. | DESCRIPTION |
|---------|-----------|----------------------------------|---------|-----------|---------------------------------|
| 1 | 120898X | Transaxle 6sp Std Dana | 44 | 105706X | Bearing Nyl 503 X 628 X 1 25 |
| 2 | 110422X | Spring Return Brake T/a Zinc | 45 | 110812X | Washer Hardened |
| 3 | 123666X | Pulley Transaxle Alum | 46 | 12000039 | Ring Klip #15304-50 |
| 4 | 12000028 | Ring Retainer # 5100-62 | 47 | 127783 | Pulley Idler V Groove Plastic |
| 5 | 121520X | Strap Pnt Torque 30 Deg Blk | 48 | 123789X | Bellcrank Asm |
| 6 | 17490512 | Screw Thdrol 5/16-18 X 3/4 Tyt | 49 | 123205X | Retainer Belt Style Spring |
| 7 | 106919X | Plate Pnt Rod Shift T/a (blk) | 50 | STD523715 | * Bolt Hex Hd 3/8-16unc X 1-1/2 |
| 8 | 124461X | Rod Shifter Blk (dana) | 51 | STD541437 | * Nut Crownlock 3/8-16 Unc |
| 9 | 19151216 | Washer 15/32 X 3/4 X 16ga | 52 | STD551037 | * Washer 13/32 X 13/16 X 16 Ga |
| 10 | STD561210 | * Pin Cotter 1/8 X 1 Cad | 53 | 105710X | Link Clutch 7 66 |
| 11 | 105701X | Washer Plate Shf 388 Sq Hole | 54 | STD561210 | * Pin Cotter 1/8 X 3/4 Cad |
| 12 | 19091210 | Washer 9/32 X 3/4 X 10 Ga | 55 | 105709X | Spring Return Clutch 6 75 |
| 13 | 71040412 | Bolt Fin Hex 1/4-28unfx3/4 Gr8 | 56 | STD561210 | * Pin Cotter 1/8 X 3/4 Cad |
| 14 | STD551125 | * Washer Lock Hvy Helical 1/4 | 57 | 125907X | V-belt Ground Drive 90 00 |
| 15 | STD523727 | * Bolt Fin Hex 3/8-16unc X 2-3/4 | 58 | 127274X | Keeper Belt Rh Lt Pnt/zinc 16g |
| 16 | STD541437 | * Nut Crownlock 3/8-16 Unc | 59 | 104777X | Retainer Belt Chassis Lh Zinc |
| 17 | 121520X | Strap Pnt Torque 30 Deg Blk | 60 | 19131312 | Washer 13/32 X 13/16 X 12 Ga |
| 18 | STD523707 | * Bolt Fin Hex 3/8-16unc X 3/4 | 61 | 17490612 | Screw Thdrol 3/8-16x3/4 Ty-tt |
| 19 | STD541437 | * Nut Crownlock 3/8-16 Unc | 62 | 8883R | Cover Pedal Blk Std |
| 20 | 17490512 | Screw Thdrol 5/16-18 X 3/4 Tyt | 63 | 134825 | Pulley Engine |
| 21 | 106933X | Knob Rd 1/2-13 Pstc Thds Blk | 64 | 71170764 | Bolt Finhex 7/16-20 x 4 g5 |
| 22 | 131867 | Rod Brake Lt | 65 | STD551143 | * Washer Lock Hvy Hlcl Spr 7/16 |
| 23 | STD541437 | * Nut Lock Hex W/wsh 3/8-16unc | 66 | 129921 | Keeper Belt Engine Lh Lt |
| 24 | STD541237 | * Nut Hex Jam 3/8-16 Unc | 67 | STD523710 | * Bolt Fin Hex 3/8-16unc X 1 |
| 25 | 106888X | Spring Rod Brake 2 00 Zinc | 68 | 19131312 | Washer 13/32 X 13/16 X 12 Ga |
| 26 | STD551037 | * Washer 13/32 X 13/16 X 16 Ga | 69 | STD541437 | * Nut Crownlock 3/8-16 Unc |
| 27 | STD561210 | * Pin Cotter 1/8 X 3/4 Cad | 70 | 134683 | Guide Belt Dr Mower Rh |
| 28 | 128904 | Rod Brake Parking Lt | 71 | STD523710 | * Bolt Fin Hex 3/8-16unc X 1 |
| 29 | 124236X | Cap Parking Brake Red | 72 | 19132012 | Washer 13/32 X 1-1/4 X 12 Ga |
| 30 | 109167X | Bracket Transmission | 73 | STD541437 | * Nut Crownlock 3/8-16 Unc |
| 31 | 127275X | Keeper Belt Lh Lt 14 Ga | 74 | 109502X | Spacer Split .80x1.94 |
| 32 | STD523707 | * Bolt Fin Hex 3/8-16unc X 3/4 | 75 | 121749X | Washer 25/32 X 1 1/4 X 16 Ga |
| 33 | STD541437 | * Nut Crownlock 3/8-16 Unc | 76 | STD581075 | * Ring E #5133-75 |
| 34 | 122424X | Shaft Asm Pedal Foot 1 930 | 77 | 123583X | Key Square 2 0 X 1845/ 1865 |
| 35 | 120183X | Bearing Nylon Blk 629 Id | 78 | 121748X | Washer 25/32 X 1 5/8 X 16ga |
| 36 | STD551062 | * Washer 21/32 X 1 X 16 Ga | | | |
| 37 | STD571810 | * Pin Roll 3/16 X 1" | | | |
| 38 | 123674X | Pulley Idler Flat | | | |
| 39 | STD523727 | * Bolt Fin Hex 3/8-16unc X 2-3/4 | | | |
| 40 | 4470J | Spacer Split 395 X 59 Bzp | | | |
| 41 | 109070X | Keeper Belt Retainer | | | |
| 42 | 19131312 | Washer 13/32 X 13/16 X 12 Ga | | | |
| 43 | STD541437 | * Nut Crownlock 3/8-16 Unc | | | |

* STANDARD HARDWARE - - PURCHASE LOCALLY
NOTE: All component dimensions given in U.S. inches.
 1 inch = 25.4 mm

REPAIR PARTS

12.5 HP 38" TRACTOR - - MODEL NUMBER 917.255572

STEERING ASSEMBLY



REPAIR PARTS

12.5 HP 38" TRACTOR - - MODEL NUMBER 917.255572

STEERING ASSEMBLY

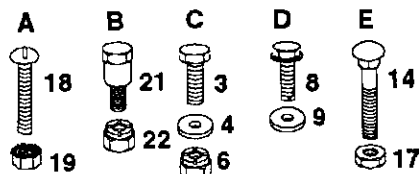
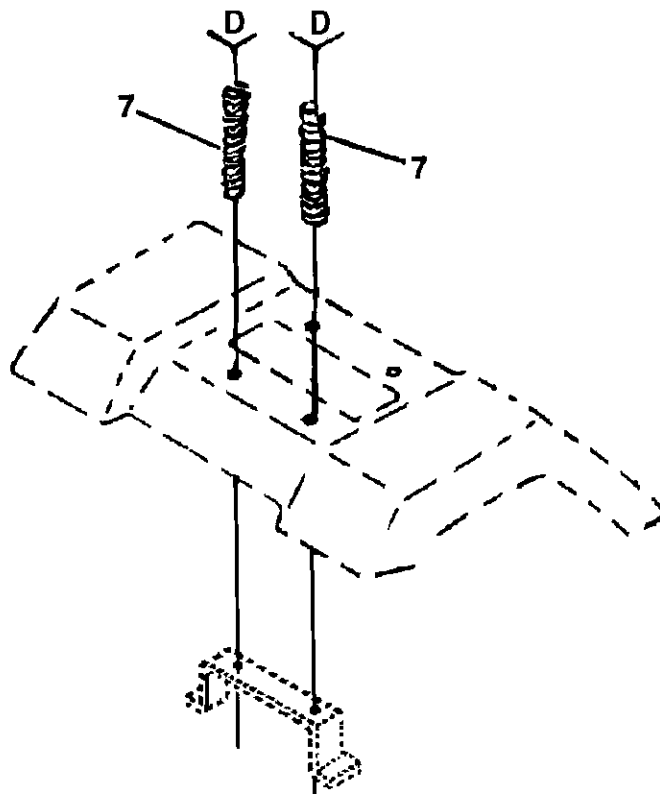
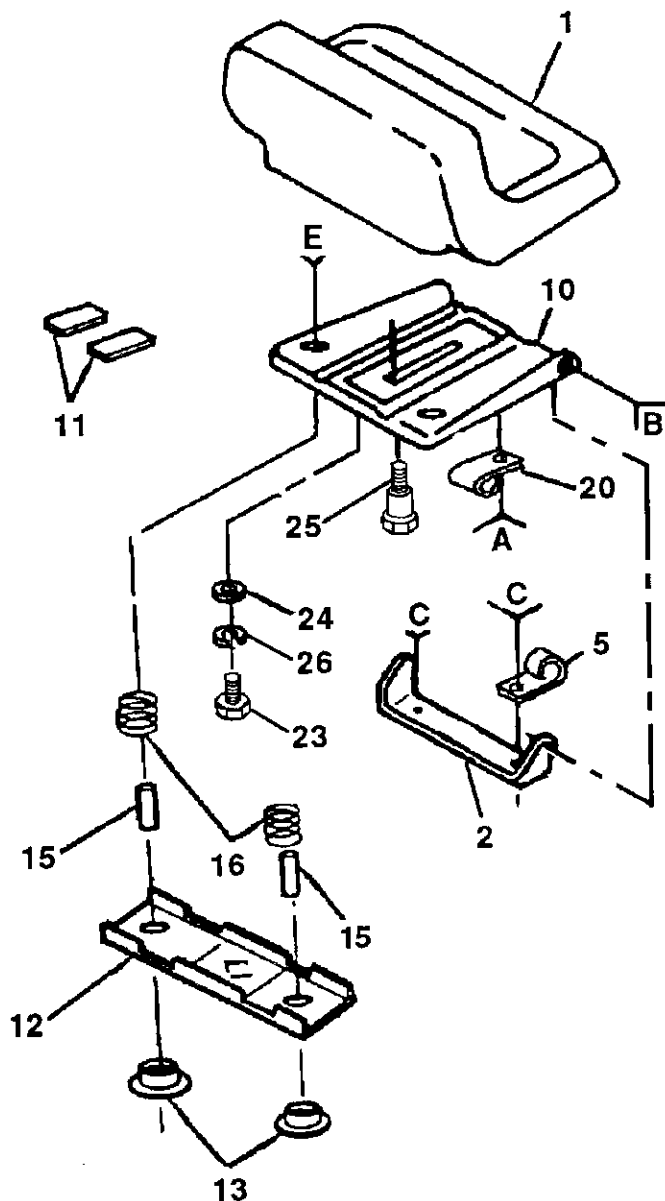
| KEY NO. | PART NO. | DESCRIPTION | KEY NO. | PART NO. | DESCRIPTION |
|---------|-----------|--------------------------------|---------|-----------|---------------------------------|
| 1 | 133741 | Wheel Steering Std Black | 26 | 12000029 | Ring Klip #t5304-75 |
| 2 | 131450 | Axle Asm Front | 27 | 124034X | Gear Sector |
| 3 | 135227 | Spindle Asm Lh | 28 | 6266H | Bearing Race Thrust Harden |
| 4 | 135228 | Spindle Asm Rh | 29 | 17490612 | Screw Thdrol 3/8-16x3/4 Ty-tt |
| 5 | 6266H | Bearing Race Thrust Harden | 30 | STD551137 | *Washer Lock Hvy Hlcl Spr 3/8 |
| 6 | 121748X | Washer 25/32 X 1 5/8 X 16ga | 31 | 73610600 | Nut Fin Hex 3/8-24 Unf |
| 7 | 19272016 | Washer 27/32 X 1 1/4 X 16 Ga | 32 | 130465 | Rod Tie Wire Form 19 75 Mech |
| 8 | 12000029 | Ring Klip #t5304-75 | 33 | 126847X | Bushing Rod Tie Blk Lt |
| 9 | 3366R | Bearing Col Strg Blk | 34 | 19131416 | Washer 13/32 X 7/8 X 16ga |
| 10 | 130468 | Link Drag Sol Ball Jt 20 064 | 35 | STD561210 | * Pin Cotter 1/8 X 3/4 Cad |
| 11 | STD551137 | * Washer Lock Hvy Hlcl Spr 3/8 | 36 | 132196 | Bushing Strg 5/8 Id Dash |
| 12 | 73610600 | Nut Fin Hex 3/8-24 Unf | 37 | STD611005 | * Screw Slftp #10-16 X 1/2 Ty-b |
| 13 | 110438X | Spacer Bearing Axle Front | 38 | 133742 | Insert Cap Strg Wheel Std Blk |
| 14 | 74011056 | Bolt Hex 5/8-11 Unc X 3-1/2 | 39 | 19133808 | Washer 13/32 X 2-3/8 X 8 Ga |
| 15 | 73601000 | Nut Hex Jam Lk W/wh 5/8-11 Unc | 40 | STD541537 | * Nut Lock Center 3/8-24unf |
| 16 | 132624 | Pin Axle 5/8 X 1 55/1 54 Lg | 41 | 104820X | Adaptor Wheel Strg 640/ 635id |
| 17 | 132614 | Shaft Asm Strg 5/8 X 15 19 Lt | 42 | 124417X | Boot Shaft Steering |
| 18 | 57079 | Washer Thrust 515x 750x 033 | 43 | 121749X | Washer 25/32 X 1 1/4 X 16 Ga |
| 19 | 124035X | Support Shaft | 44 | 121748X | Washer 25/32 X 1 5/8 X 16ga |
| 20 | 126684X | Washer Shim 1/4 X 5/8 X 062 | 45 | 12000029 | Ring Klip #t5304-75 |
| 21 | STD551125 | * Washer Lock Hvy Helical 1/4 | 46 | 121232X | Cap Spindle Fr Top Blk |
| 22 | 71070410 | Screw Hex Socket 1/4-20 X 5/8 | | | |
| 23 | 127501 | Shaft Asm Pittman | | | |
| 24 | 109816X | Nyliner Snap In | | | |
| 25 | 124036X | Bracket Steering | | | |

* STANDARD HARDWARE - - PURCHASE LOCALLY
NOTE: All component dimensions given in U.S. inches.
 1 inch = 25.4 mm

REPAIR PARTS

12.5 HP 38" TRACTOR - - MODEL NUMBER 917.255572

SEAT ASSEMBLY



| KEY NO. | PART NO. | DESCRIPTION |
|---------|-----------|--------------------------------|
| 1 | 127437 | Seat V350 Blk/red Craftsman |
| 2 | 126656X | Bracket Pnt Pivot Seat (blk) |
| 3 | STD523707 | * Bolt Fin Hex 3/8-16unc X 3/4 |
| 4 | 19131210 | Washer 13/32 X 3/4 X 10 Ga |
| 5 | 2751R | Clip Line Fuel 13/32 Mtg Hole |
| 6 | STD541437 | * Nut Crownlock 3/8-16 Unc |
| 7 | 124181X | Spring Cprsn 2 250 Blk Zi |
| 8 | 17490616 | Screw Thdrol 3/8-16 X 1 Ty-tt |
| 9 | 19131614 | Washer 13/32 X 1 X 14 Ga |
| 10 | 131451 | Pan Pnt Seat (blk) |
| 11 | 121251X | Strip Foam Gray Or Black |
| 12 | 121246X | Bracket Pnt Mounting Switch |
| 13 | 121248X | Bushing Snap Blk Nyl 50 Id |
| 14 | 72050411 | Bolt Rdhd Sht Nk 1/4-20x1-3/8 |
| 15 | 121249X | Spacer Split 28 X 88 Zinc |

| KEY NO. | PART NO. | DESCRIPTION |
|---------|-----------|-----------------------------------|
| 16 | 121250X | Spring Cprsn 1 27 Blk Pnt |
| 17 | 123976X | Nut Lock 1/4 Lge Flg Gr 5 Zinc |
| 18 | STD511005 | * Screw Slt'd Pan Hd #10-32 X 1/2 |
| 19 | 73951000 | Nut Keps #10-32 Unf |
| 20 | 4171R | Clip Insulated 11/32 Mtg Hole |
| 21 | 105529X | Bolt Shoulder 5/16-18 Unc Blkz |
| 22 | STD541431 | * Nut Crown Lock 5/16-18 |
| 23 | 74780814 | Bolt Fin Hex 1/2-13 X 7/8 Gr 5 |
| 24 | 19171912 | Washer 17/32 X 1-3/16 X 12 Ga |
| 25 | 127018X | Bolt Shoulder 5/16-18 X 62 |
| 26 | STD551150 | * Washer Lock Hvy Hlcl Spr 1/2 |

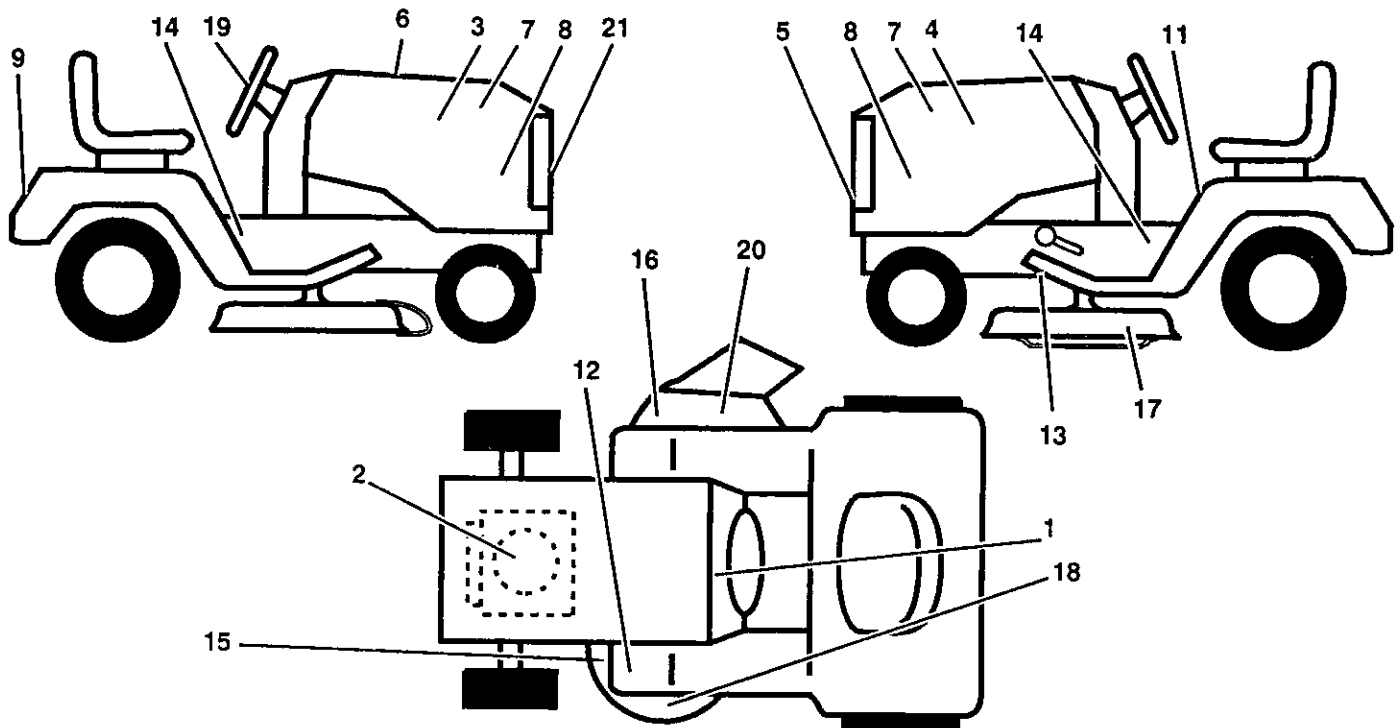
* STANDARD HARDWARE - - PURCHASE LOCALLY

NOTE: All component dimensions given in U.S. inches.
1 inch = 25.4 mm

REPAIR PARTS

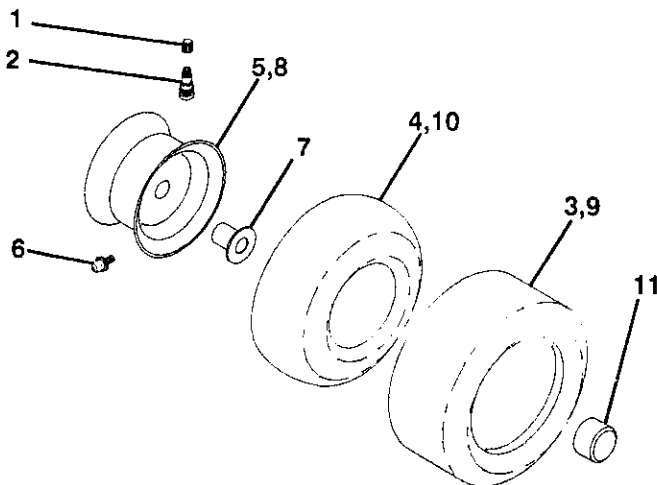
12.5 HP 38" TRACTOR - - MODEL NUMBER 917.255572

DECALS



| KEY NO. | PART NO. | DESCRIPTION | KEY NO. | PART NO. | DESCRIPTION |
|---------|----------|--------------------------------|---------|----------|--------------------------------|
| 1 | 108456X | Decal Instruction Operat Eng | 12 | 4900J | Decal Clutch/brake English |
| 2 | 127908 | Decal Eng 12 5hp lc Gold Craft | 13 | 109199X | Decal V-belt Dr Sch Tractor E |
| 3 | 124489X | Decal Hood Slope Rh Craftsman | 14 | 108428X | Decal Chassis 6 Sp 38" |
| 4 | 124490X | Decal Hood Slope Lh Craftsman | 15 | 130929 | Decal Mower Drive Schematic 38 |
| 5 | 132674 | Decal Grille Lt4000 Craft Usa | 16 | 121343X | Decal Danger English |
| 6 | 133644 | Decal Maint Customer Sears Dom | 17 | 3713J | Decal Rota Blades English |
| 7 | 128235 | Decal Panel Side l/c Gold/blk | 18 | 133179 | Decal Mower Qc System |
| 8 | 108631X | Decal li(die Cut) | 19 | 132267 | Decal Insr Wh Strg Crafts Usa |
| 9 | 125880X | Decal Fender Craftsman Red | 20 | 133178 | Decal Mower 3in. One Conv. |
| 11 | 133796 | Decal Caution English | 21 | 131265 | Decal Lightbox |
| | | | -- | 136520 | Manual, Owner's 255572 English |

WHEELS & TIRES



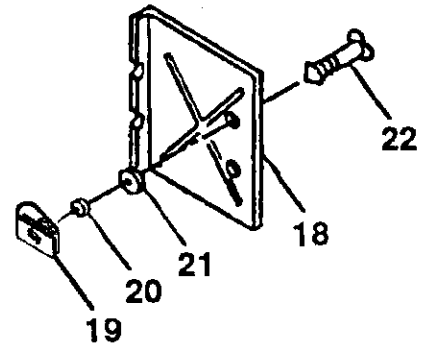
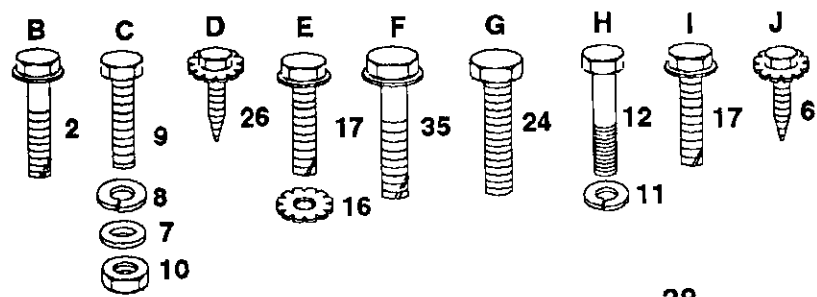
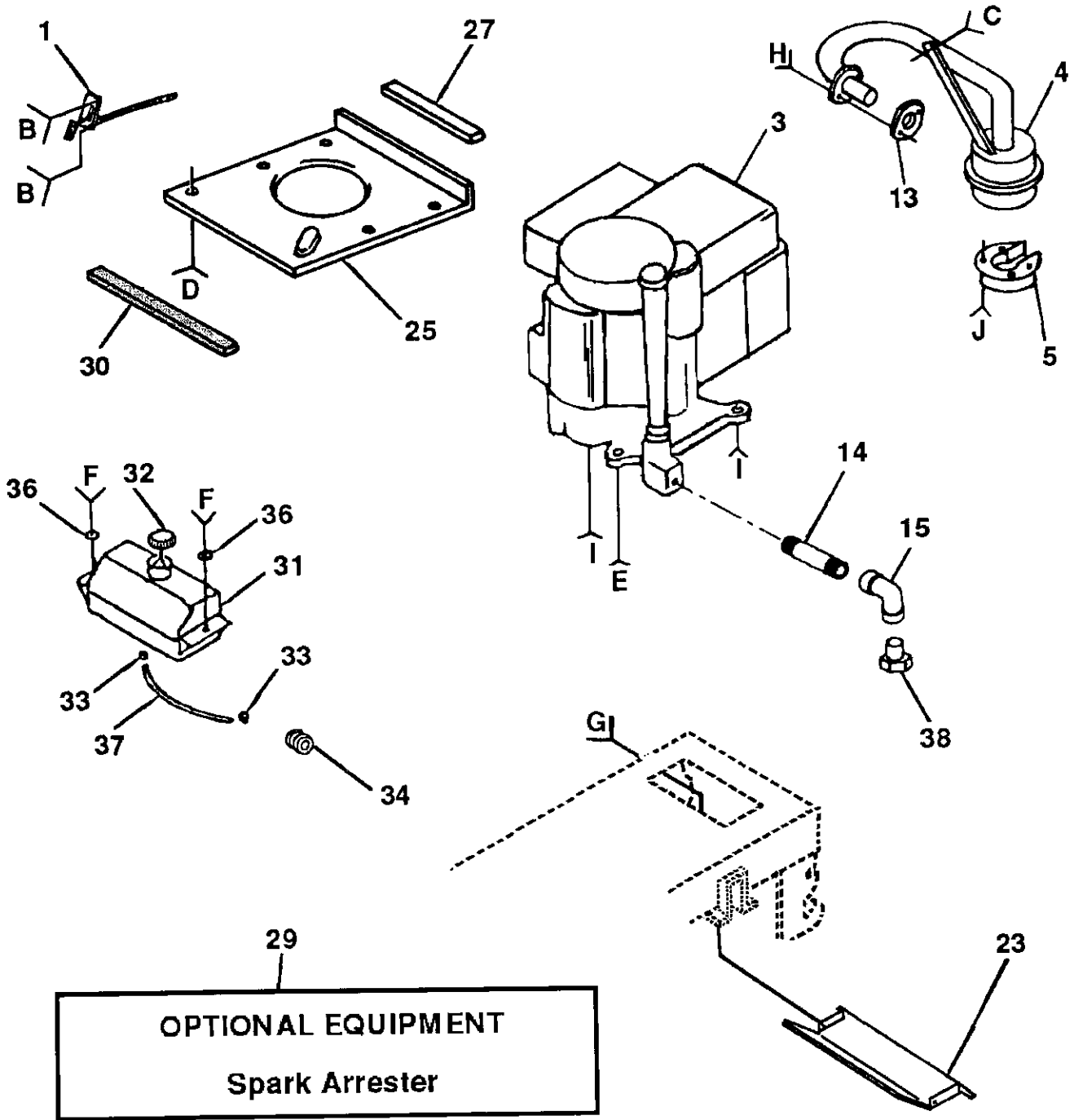
| KEY NO. | PART NO. | DESCRIPTION |
|---------|------------|--------------------------------|
| 1 | 59192 | Cap Value Tire |
| 2 | 65139 | Stem Value |
| 3 | 106222X | Tire F Ts 15 X 6 0 - 6 Service |
| 4 | 59904 | Tube Inner Front #35060 |
| 5 | 106732X361 | Rim Asm 6"front Silver Service |
| 6 | 278H | Fitting Grease |
| 7 | 9040H | Bearing Flange |
| 8 | 106108X361 | Rim Asm 8"rear Silver Service |
| 9 | 3588R | Tire R Ts 18x8 5-8 S Service |
| 10 | 7152J | Tube Rear 9 5 X 8 Service |
| 11 | 104757X | Cap Axle Blk 1 50 X 1 00 |

NOTE: All component dimensions given in U.S. inches.
1 inch = 25.4 mm

REPAIR PARTS

12.5 HP 38" TRACTOR - - MODEL NUMBER 917.255572

ENGINE



REPAIR PARTS

12.5 HP 38" TRACTOR - - MODEL NUMBER 917.255572

ENGINE

| KEY NO. | PART NO. | DESCRIPTION | KEY NO. | PART NO. | DESCRIPTION |
|---------|-----------|---------------------------------|---------|-----------|---|
| 1 | 132759 | Control Throt Rh Blk Pdl 15 10 | 22 | 123650X | Stud 1/4 Turn (replaces 105751 |
| 2 | 17720410 | Screw Hex Thd Cut 1/4-20x5/8 T | 23 | 128953 | Shield Pnt Heat Browning Grass |
| 3 | 131953 | Engine B&s 12.5hp 1/c Dual 1 Vt | 24 | STD601005 | * Screw Tap Hex #10-24unc X 1/2 |
| 4 | 125610X | Muffler Exhaust B&s Lt Std | 25 | 124027X | Shield Pnt Heat Hood Lt |
| 5 | 101326L | Deflector Muffler # 222573 | 26 | 17030808 | Screw Spiderloc Hexhd#8x1/2 Ab |
| 6 | 17030808 | Screw Spiderloc Hexhd#8x1/2 Ab | 27 | 105037X | Strip Foam 18" |
| 7 | STD551025 | * Washer 9/32 X 5/8 X 16 Ga | 29 | 121851X | Arrestor Spark |
| 8 | STD551125 | * Washer Lock Hvy Helical 1/4 | 30 | 127057X | Strap Hood |
| 9 | STD522510 | * Bolt Fin Hex 1/4-20 Unc X 1 | 31 | 109202X | Tank Fuel 1 25 Fr |
| 10 | 73220500 | Nut Fin Hex 5/16-18 Unc | 32 | 123549X | Cap Asm Fuel W/sym Vented |
| 11 | STD551131 | * Washer Lock Hvy Hlcl Spr 5/16 | 33 | 123487X | Clamp Hose Blk |
| 12 | 71070510 | Screw Hexhd Cap 5/16-18x5/8 | 34 | 124028X | Bushing Snap Nyl Blk Fuel Line |
| 13 | 125593X | Gasket 1 313 Id Tin Plated | 35 | 17490412 | Screw Hexwsh Thdrol 1/4-20x3/4 |
| 14 | 13280324 | Nipple Pipe 3/8 Npt X 3" | 36 | 19091416 | Washer 9/32 X 7/8 X 16ga |
| 15 | 13200300 | Elbow Std 90 Degree 3/8-18 Npt | 37 | 101335K | Line Fuel 9 50" |
| 16 | STD551237 | * Washer Lock Ext Tooth 3/8 | 38 | - - - | Plug Oil Drain (Order From Engine Manufacturer) |
| 17 | 17490620 | Screw Thdrol 3/8-16x1-1/4 Tytt | | | |
| 18 | 105736X | Shield Pnt Heat | | | |
| 19 | 105839X | Receptacle 1/4 Turn Dacrotized | | | |
| 20 | 105838X | Retainer 1/4 Turn 365odx 222id | | | |
| 21 | STD551025 | * Washer 9/32 X 5/8 X 16 Ga | | | |

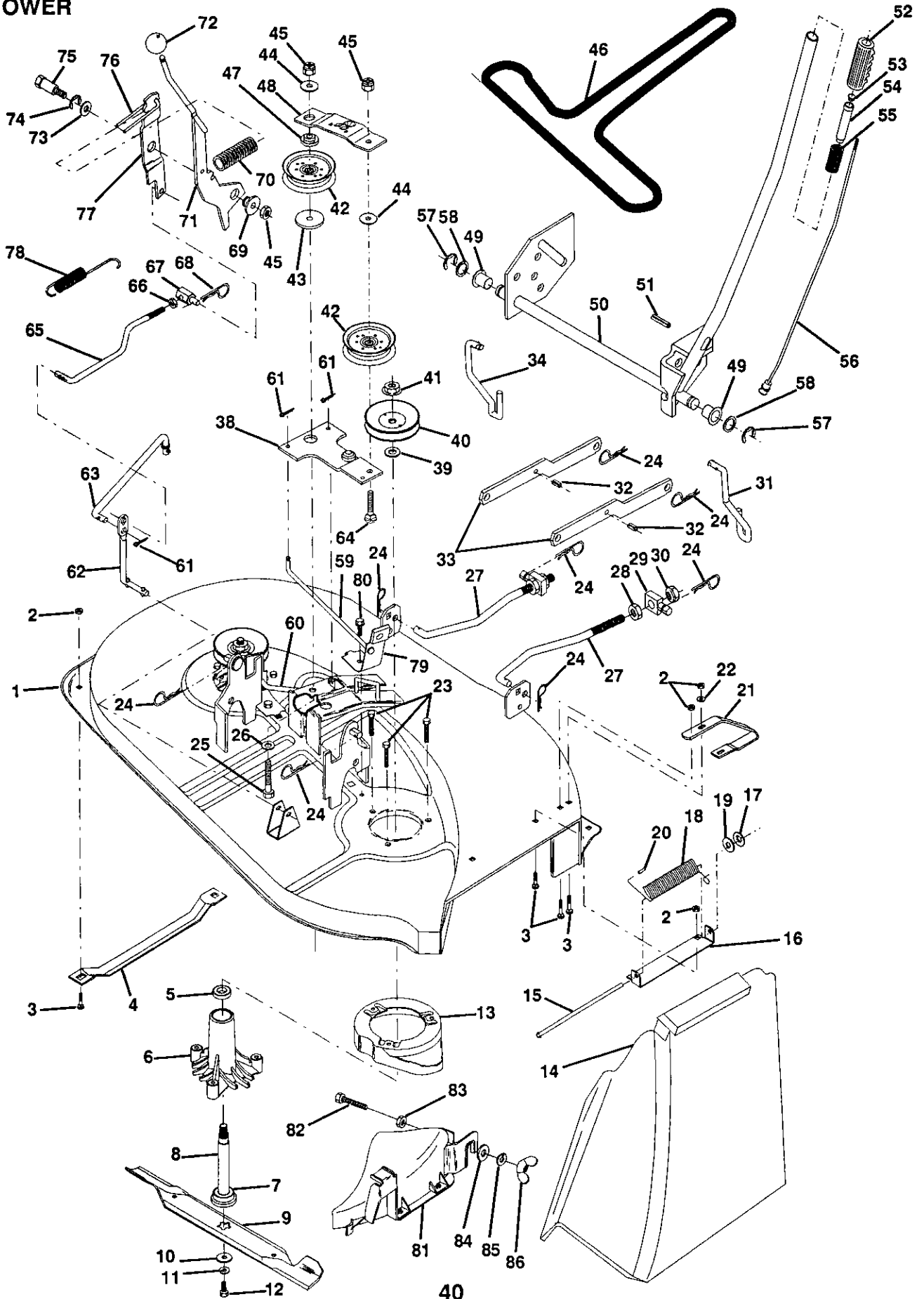
* STANDARD HARDWARE - - PURCHASE LOCALLY

NOTE: All component dimensions given in U.S. inches.
1 inch = 25.4 mm

REPAIR PARTS

12.5 HP 38" TRACTOR -- MODEL NUMBER 917.255572

38" MOWER



REPAIR PARTS

12.5 HP 38" TRACTOR - - MODEL NUMBER 917.255572

38" MOWER

| KEY NO. | PART NO. | DESCRIPTION | KEY NO. | PART NO. | DESCRIPTION |
|---------|-----------|--|---------|-----------|---|
| 1 | 129365 | Mower Asm 38"welded | 45 | STD541437 | * Nut, Crownlock 3/8-16 |
| 2 | STD541431 | * Nut, Crownlock 5/16-18 | 46 | 131290 | Belt |
| 3 | STD533107 | * Bolt, Carriage 5/16-18 x 3/4 | 47 | 133502 | Spacer, Retainer |
| 4 | 7631J | Runner, L. H. | 48 | 133503 | Stiffener, Arm Idler |
| 5 | 110485X | Bearing, Ball, Mandrel | 49 | 120183X | Bearing, Nylon |
| 6 | 128774 | Housing Asm., Mandrel Vented (machd) | 50 | 122507X | Shaft Asm., Lift |
| 7 | 129895 | Bearing, Ball | 51 | 105767X | Pin, Groove |
| 8 | 133172 | Shaft and Bearing Asm. (Includes Key #7) | 52 | 125631X | Grip, Handle |
| 9 | 134148 | Blade, Mulching | 53 | 122365X | Button, Plunger |
| | 127842 | Blade, High Performance | 54 | 122364X | Plunger, Lever |
| 10 | 129962 | Washer, Hard, Mower, Vented | 55 | 122512X | Spring |
| 11 | STD551137 | * Washer, Lock Hvy 3/8 | 56 | 122514X | Rod, Lever |
| 12 | 850857 | Bolt, Blade 3/8-24 x 1-1/4 Gr. 8 | 57 | STD581062 | * Ring, E |
| 13 | 128961 | Stripper, Mower, Vented | 58 | 19211416 | Washer 21/32 x 7/8 x 16 Ga. |
| 14 | 106736X | Shield, Deflector | 59 | 131288 | Rod, Brake, R. H. |
| 15 | 106735X | Rod, Hinge | 60 | 131289 | Rod, Brake, L. H. |
| 16 | 105896X | Bracket, Deflector, Mower | 61 | STD560907 | * Pin, Cotter 3/32 x 3/4 |
| 17 | 110452X | Nut, Push | 62 | 133551 | Rod, Pivot |
| 18 | 106734X | Spring, Deflector | 63 | 133504 | Rod, Clutch, Secondary |
| 19 | 19111016 | Washer 11/32 x 3/4 x 16 Ga. | 64 | STD533717 | * Bolt, Carriage 3/8-16 x 1-3/4 |
| 20 | 105304X | Cap, Sleeve | 65 | 133550 | Rod, Clutch, Primary |
| 21 | 128772 | Runner, R. H. | 66 | 73350600 | Nut, Hex Jam 3/8-16 |
| 22 | 19111216 | Washer 11/32 x 3/4 x 16 Ga. | 67 | 133205 | Trunnion 3/8-16 |
| 23 | 78158 | Bolt, Mandrel | 68 | STD624003 | * Retainer, Spring |
| 24 | STD624008 | * Retainer, Spring | 69 | 127498 | Bushing |
| 25 | 74600636 | Bolt, Hex Hd. 3/8-16 x 2.25 | 70 | 128759 | Spring |
| 26 | 19131612 | Washer 13/32 x 1 | 71 | 133573 | Arm, Clutch Primary Asm. |
| 27 | 127218 | Link, Front | 72 | 106932X | Knob |
| 28 | 73350800 | Nut, Jam Hex 1/2-13 | 73 | 121748X | Washer 25/32 x 1-5/8 x 16 Ga. |
| 29 | 130171 | Trunnion | 74 | 12000029 | Ring, Klip |
| 30 | 73800800 | Locknut w/wsh 1/2-13 | 75 | 128903 | Bolt, Shoulder |
| 31 | 135388 | Lift, Link, R. H. | 76 | 127845 | Keeper, Spring |
| 32 | 135563 | Pin, Spring 5/16-3/4 | 77 | 127847 | Arm, Clutch, Secondary |
| 33 | 130833 | Arm, Suspension, Rear Asm. | 78 | 131870 | Spring, Return |
| 34 | 134619 | Link, Lift, L. H. | 79 | 130840 | Brake Ass., Mower, Vented |
| 38 | 133840 | Idler Arm Asm. | 80 | 17490512 | Screw, Hex, Thd. Rol. 5/16-18 x 3/4 |
| 39 | 129963 | Washer, Spacer Mower, Vented | 81 | 132803 | Cover, Mulcher |
| 40 | 129206 | Pulley, Mandrel, Single | 82 | 74930620 | Bolt, Hex 3/8-16 x 1-1/4 |
| 41 | 73050900 | Nut, Flangelock 9/16 | 83 | 73750600 | Locknut 3/8-16 |
| 42 | 131494 | Pulley, Idler, Flat | 84 | 19132016 | Washer 13/32 x 1-1/4 x 16 Gauge |
| 43 | 122052X | Spacer, Retainer 1-3/4 | 85 | 10040600 | Washer, Lock 3/8 |
| 44 | 19131612 | Washer 13/32 x 1 x 12 Ga. | 86 | 135651 | Wing Nut |
| | | | -- | 131455 | Deck, Complete Mower (Std. Deck - Does not include mulcher plate and mulcher blades.) |
| | | | -- | 130794 | Mandrel Assembly (Includes Key Numbers 5-8, 10-12, 39 and 41) |

* STANDARD HARDWARE - - PURCHASE LOCALLY

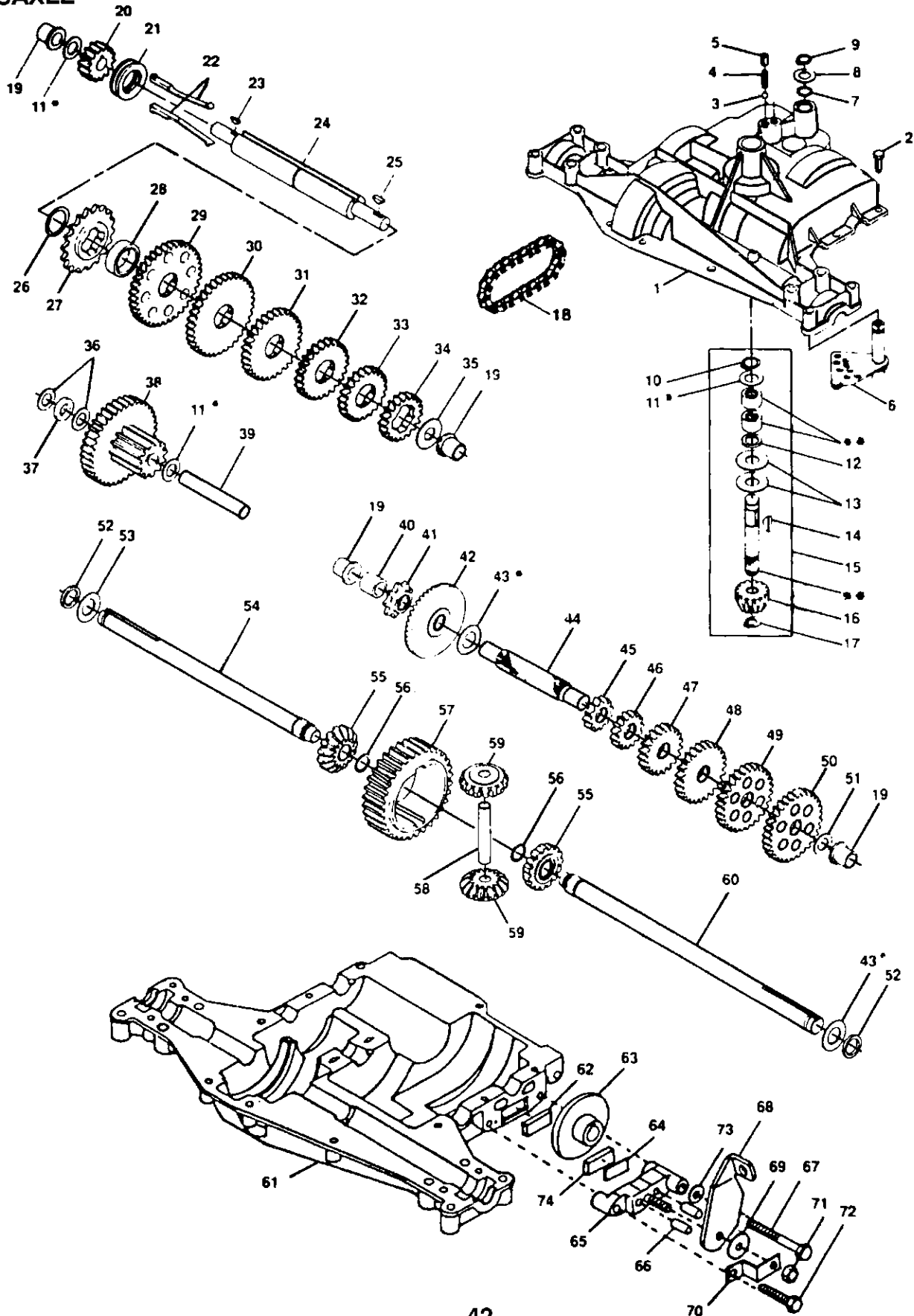
NOTE: All component dimensions given in U.S. inches.
1 inch = 25.4 mm

REPAIR PARTS

12.5 HP 38" TRACTOR - MODEL NUMBER 917.255572

TRANSAXLE DANA - MODEL NUMBER 4360-07

TRANSAXLE



REPAIR PARTS

12.5 HP 38" TRACTOR - MODEL NUMBER 917.255572

TRANSAXLE DANA - MODEL NUMBER 4360-07

TRANSAXLE

| KEY PART NO. NO. | DESCRIPTION | KEY PART NO. NO. | DESCRIPTION |
|------------------|---|------------------|---|
| 1 3865 | Housing, Upper | 42 3853 | Gear, Bevel, 42 Teeth |
| 2 1919 | Screw, Tapping, Large 1/4-20 x .734 | 43 3749 | * Washer, Plain .758 x 1.12 x .010 |
| 3 1151 | Ball, Detent | 3652 | * Washer, Plain .758 x 1.12 x .015 |
| 4 3626 | Spring, Detent | 3693 | * Washer, Plain .758 x 1.12 x .020 |
| 5 3623 | Screw, Set | 3653 | * Washer, Plain .758 x 1.12 x .025 |
| 6 4336 | Assembly, Shifter | 3408 | * Washer, Plain .758 x 1.25 x .020 |
| 7 3884 | O-Ring | 3732 | * Washer, Plain .758 x 1.25 x .025 |
| 8 3885 | * Washer, Plain .505 x .942 x .006 | 3184 | * Washer, Plain .758 x 1.25 x .031 |
| 3886 | * Washer, Plain .505 x .942 x .010 | 3733 | * Washer, Plain .758 x 1.25 x .035 |
| 3887 | * Washer, Plain .505 x .942 x .015 | 3198 | * Washer, Plain .758 x 1.25 x .040 |
| 3888 | * Washer, Plain .505 x .942 x .020 | 3734 | * Washer, Plain .758 x 1.25 x .045 |
| 3889 | * Washer, Plain .505 x .942 x .026 | 3735 | * Washer, Plain .758 x 1.25 x .050 |
| 3121 | * Washer, Plain .505 x .942 x .030 | 3736 | * Washer, Plain .758 x 1.25 x .055 |
| 3890 | * Washer, Plain .505 x .942 x .040 | 3180 | * Washer, Plain .758 x 1.25 x .062 |
| 9 1100 | Ring, Retaining | 44 3882 | Shaft, Drive |
| 10 1099 | Ring, Retaining | 45 3646 | Gear, Spur, 12 Teeth |
| 11 1959 | * Washer, Plain .632 x 1.00 x .010 | 46 3707 | Gear, Spur, 15 Teeth |
| 1441 | * Washer, Plain .632 x 1.00 x .020 | 47 3866 | Gear, Spur, 20 Teeth |
| 1423 | * Washer, Plain .632 x 1.00 x .026 | 48 3719 | Gear, Spur, 25 Teeth |
| 1082 | * Washer, Plain .632 x 1.00 x .031 | 49 3868 | Gear, Spur, 28 Teeth |
| 1424 | * Washer, Plain .632 x 1.00 x .036 | 50 3683 | Gear, Spur, 31 Teeth |
| 1068 | * Washer, Plain .632 x 1.00 x .041 | 51 1145 | Washer, Plain .632 x 1.00 x .060 |
| 1425 | * Washer, Plain .632 x 1.00 x .046 | 52 3191 | Seal, Felt |
| 1358 | * Washer, Plain .632 x 1.00 x .050 | 53 3180 | Washer, Plain .758 x 1.25 x .062 |
| 1145 | * Washer, Plain .632 x 1.00 x .060 | 54 3880 | Axle, Left Hand |
| 1319 | * Washer, Plain .632 x 1.00 x .082 | 55 3780 | Gear, Miter, 15 Teeth |
| 12 3312 | O-Ring | 56 3656 | Ring, Retaining |
| 13 3876 | Washer, Plain .632 x 1.38 x .046 | 57 3839 | Gear, Spur, 32 Teeth |
| 14 1374 | Key, Woodruff #9 | 58 3919 | Shaft, Cross |
| 15 4134 | Assembly, Kit, Input Shaft | 59 3781 | Gear, Miter, 15 Teeth |
| 16 3590 | Pinion, Bevel, 14 Teeth | 60 3881 | Axle, Right Hand |
| 17 3624 | Ring, Retaining | 61 3864 | Housing, Lower |
| 18 3625 | Chain, 24 Pitches | 62 3920 | Puck, Friction |
| 19 1542 | Bearing, Flange | 63 3276 | Disc, Brake |
| 20 3773 | Gear, Spur, 14 Teeth | 64 3758 | Spacer |
| 21 3631 | Collar, Clutch | 65 3916 | Jaw, Brake |
| 22 3828 | Key, Clutch | 66 3843 | Pin, Dowel |
| 23 1369 | Key, Woodruff | 67 3915 | Screw, Tapping, Large 5/16-18 x 2.25 |
| 24 3883 | Shaft, Intermediate | 68 3768 | Lever, Actuating |
| 25 1375 | Key, Woodruff #61 | 69 3760 | Washer, Plain .321 x 1.00 x .055 |
| 26 3627 | Ring, Retaining | 70 3917 | Bracket, Anti-Rotation |
| 27 3830 | Sprocket, 18 Teeth | 71 3847 | Locknut 5/16-24 |
| 28 3841 | Spacer | 72 3724 | Screw, Tapping, Large 5/16-18 x 1.44 |
| 29 3786 | Gear, Spur, 37 Teeth | 73 3906 | Washer, Plain .343 x .81 x .059 |
| 30 3785 | Gear, Spur, 35 Teeth | 74 3907 | Puck, Friction |
| 31 3867 | Gear, Spur, 30 Teeth | 75 4300 | Grease |
| 32 3783 | Gear, Spur, 25 Teeth | | |
| 33 3869 | Gear, Spur, 22 Teeth | | |
| 34 3741 | Gear, Spur, 19 Teeth | | |
| 35 3628 | Washer, Plain .640 x 1.37 x .061 | | |
| 36 1423 | Washer, Plain .632 x 1.00 x .026 | | |
| 37 3422 | Spacer .630 x 1.00 x .169 | | |
| 38 4286 | Assembly, Gear, Combination of 12 Teeth and 35 Teeth | | |
| 39 3877 | Shaft, Idler | | |
| 40 3901 | Spacer .635 x .875 x .755 | | |
| 41 3645 | Sprocket, 9 Teeth | | |

* Use In Various Combinations To Maintain Proper Clearances.

** Order Key Number 15

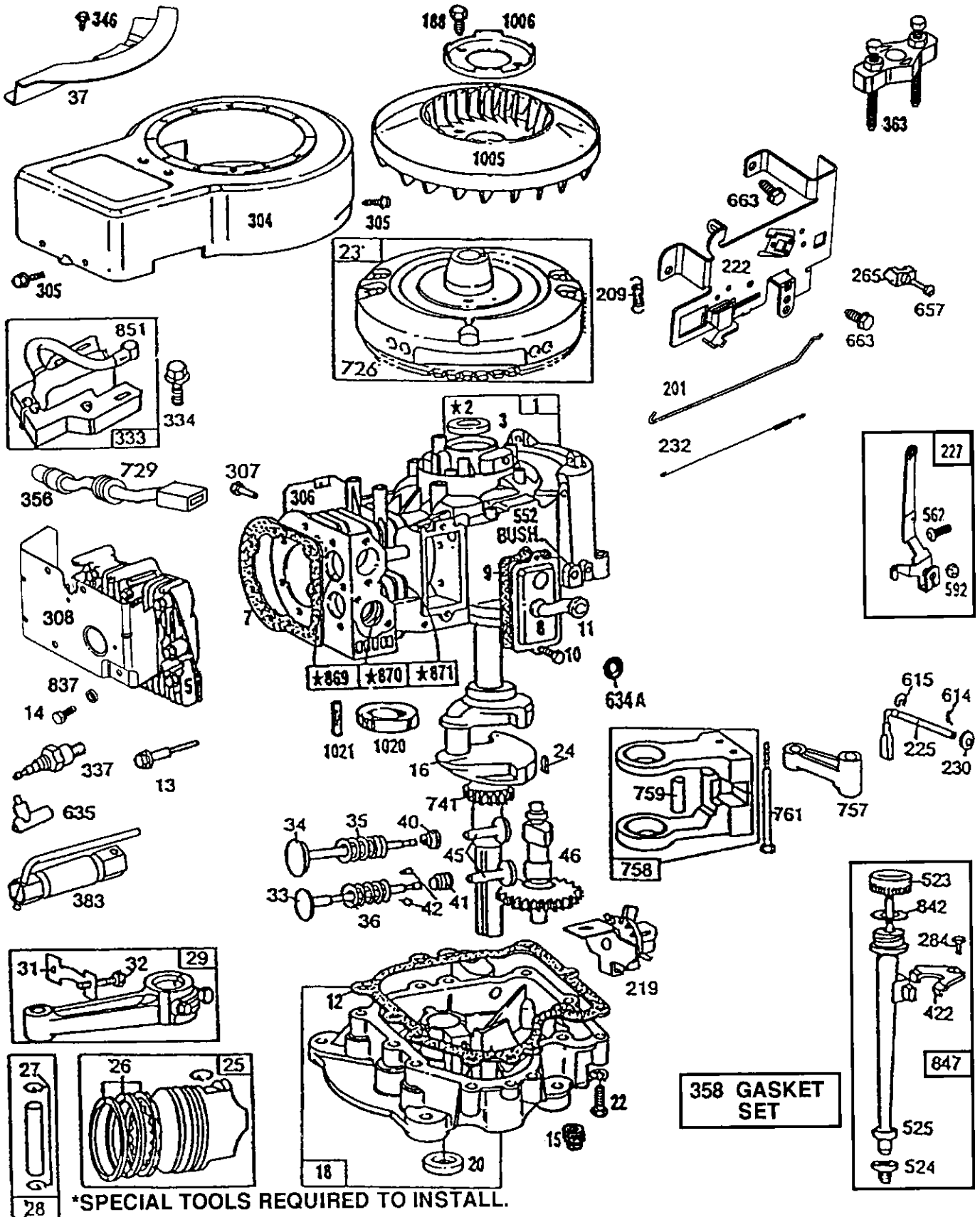
NOTE: All component dimensions given in U.S. inches
1 inch = 25.4 mm

Parts must be ordered from Dana Corporation.

REPAIR PARTS

12.5 HP 38" TRACTOR - - MODEL NUMBER 917.255572

BRIGGS & STRATTON ENGINE - MODEL NUMBER 286707, TYPE NUMBER 0437-01



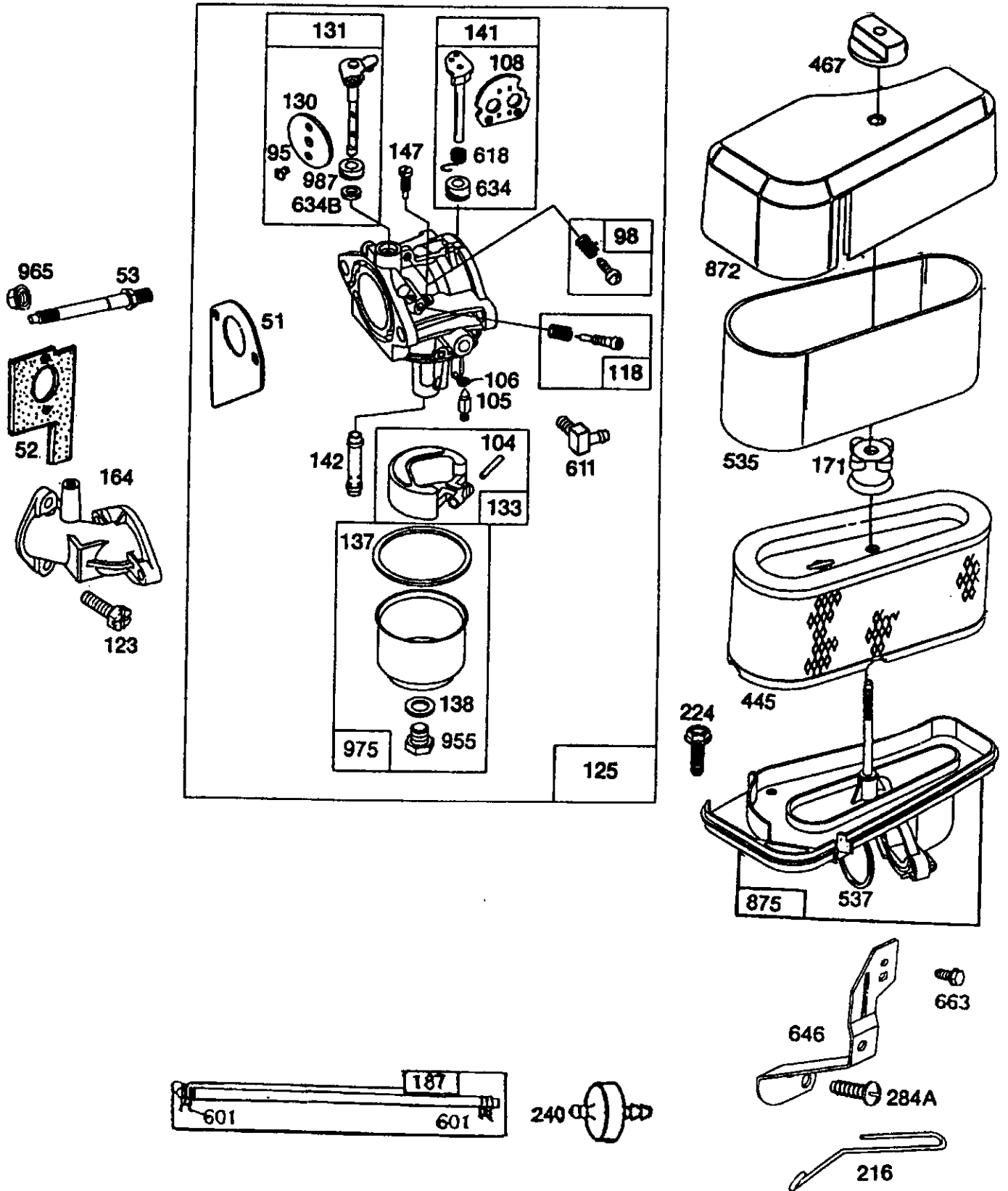
*SPECIAL TOOLS REQUIRED TO INSTALL.

REPAIR PARTS

12.5 HP 38" TRACTOR - - MODEL NUMBER 917.255572

BRIGGS & STRATTON ENGINE - MODEL NUMBER 286707, TYPE NUMBER 0437-01

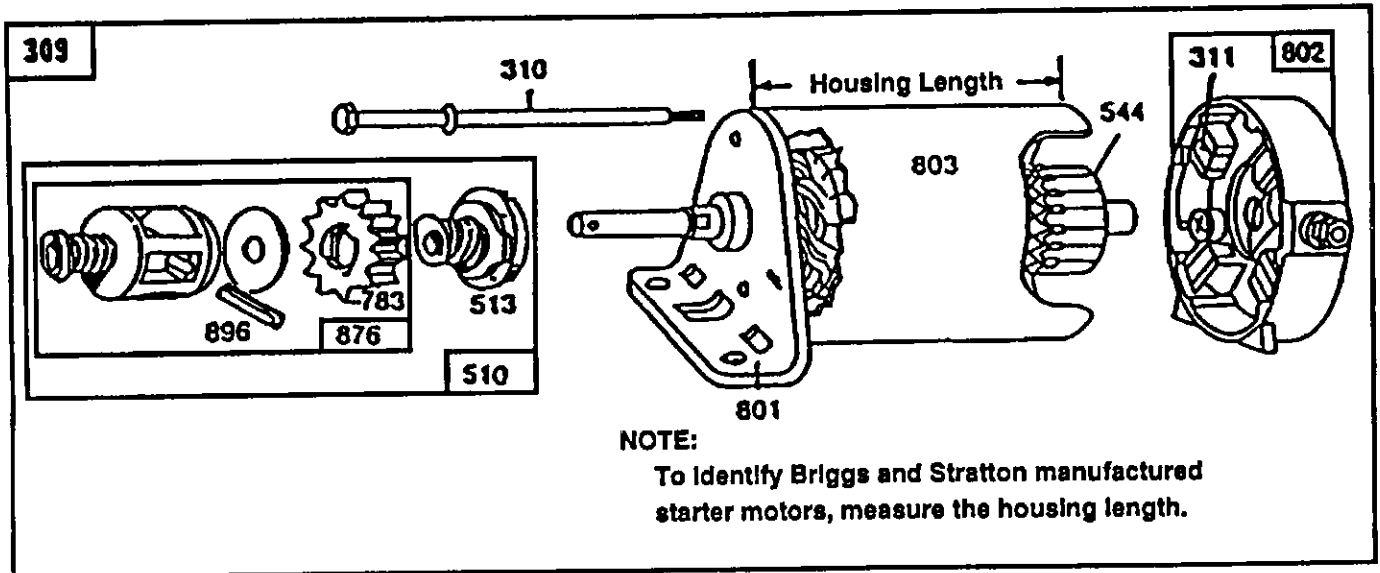
121 CARBURETOR OVERHAUL KIT



REPAIR PARTS

12.5 HP 38" TRACTOR - - MODEL NUMBER 917.255572

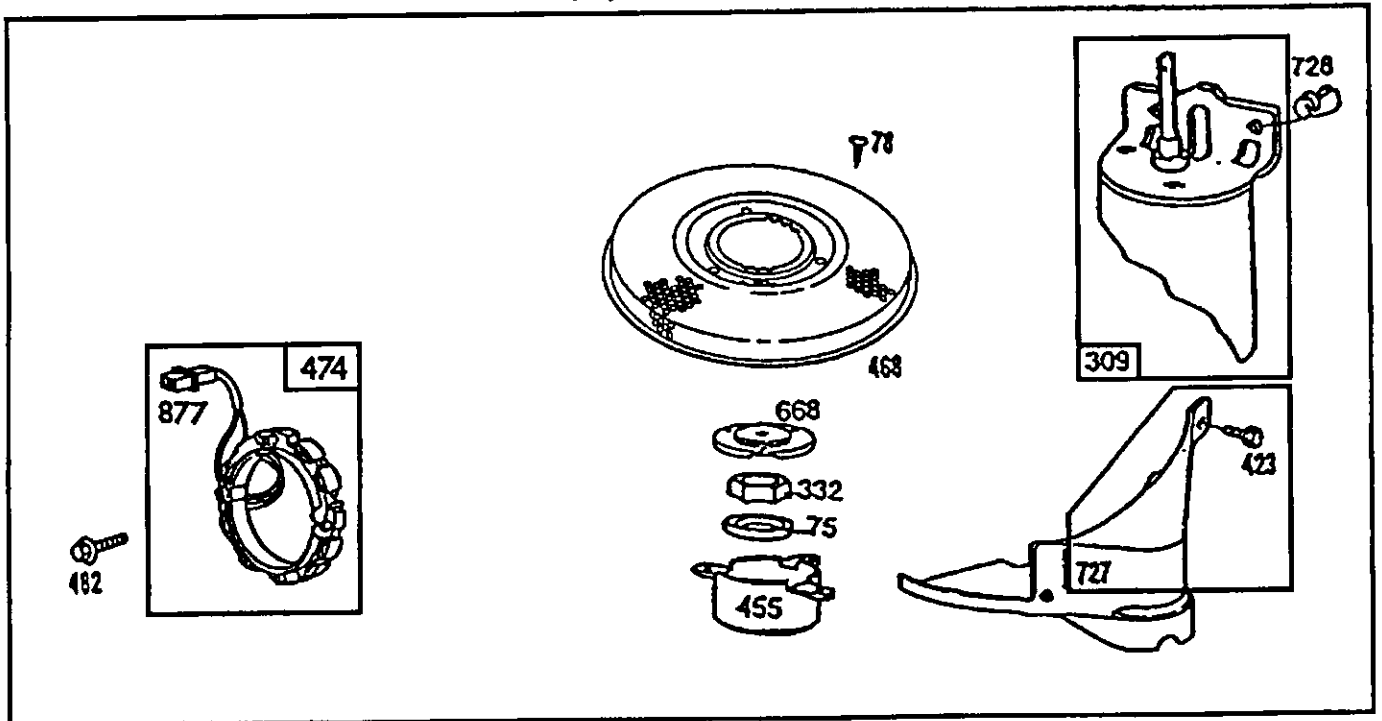
BRIGGS & STRATTON ENGINE - MODEL NUMBER 286707, TYPE NUMBER 0437-01



| KEY NUMBER | | 309 | 310 | 311 | 510 | 544 | 801 | 802 | 803 |
|-------------------|----------------|-----------------------|--------------------|----------------|----------------|-------------------|------------------------|--------------------------|------------------|
| MANUFACTURER | | Motor and Drive Assy. | Thru Bolt Assembly | Brush Assembly | Drive Assembly | Armature Assembly | Drive End Cap Assembly | End Cap Assy. Commutator | Housing Assembly |
| Briggs & Stratton | Housing Length | | | | | | | | |
| 12V | 3-21/32" | 494325 | 94003 | 395538 | 490421** | 390837 | 394856 | 395537* | 398159 |

*Includes Brush Set

**Includes
 #398003 Clutch Assembly (Key Number 513)
 #280104 Gear (Key Number 783)
 #490467 Retainer and Pin (Key Number 876)
 #94288 Roll Pin (Key Number 896)



REPAIR PARTS

12.5 HP 38" TRACTOR - - MODEL NUMBER 917.255572

BRIGGS & STRATTON ENGINE - MODEL NUMBER 286707, TYPE NUMBER 0437-01

| KEY PART NO. | NO. | DESCRIPTION | KEY PART NO. | NO. | DESCRIPTION |
|--------------|--------|---|--------------|--------|--|
| 1 | 490450 | Cylinder Assembly | 78 | 93805 | Screw, Sems |
| 2 | 261623 | Bearing, Cylinder (Requires Special Tools For Installation) | 95 | 94098 | ** Screw, Throttle |
| 3 | 391086 | * Seal, Oil | 98 | 494382 | Screw, Idle Speed |
| 5 | 494240 | Head, Cylinder | 104 | 231789 | ** Pin, Float Hinge |
| 7 | 271866 | * Gasket, Cylinder Head | 105 | 231790 | ** Valve Assembly, Inlet Needle |
| 8 | 391406 | Breather Assembly | 106 | 281169 | Inlet Valve Seat |
| 9 | 27803 | Gasket, Valve Cover | 108 | 224540 | Valve, Choke |
| 10 | 94621 | Screw, Sems | 118 | 494383 | ** Valve, Needle |
| 11 | 280100 | Tube, Breather | 121 | 494384 | Carburetor Overhaul Kit (Includes Items marked ** and ***) |
| 12 | 271916 | * Gasket, Crankcase Cover 1/64" | 123 | 94616 | Screw, Elbow Mounting |
| | 271997 | * Gasket, Crankcase Cover .005" | 125 | 494392 | Carburetor Assembly (Choke-A-Matic) |
| | 271996 | * Gasket, Crankcase Cover .009" | | | Valve, Throttle |
| 13 | 94622 | Screw, Cylinder Head 3" | 130 | 224539 | Shaft and Lever, Throttle |
| 14 | 93415 | Screw, Cylinder Head 3/4" | 131 | 494379 | Float, Carburetor |
| 15 | 94239 | Plug, Oil Drain | 133 | 494381 | *** Gasket, Float Bowl |
| 16 | 490466 | Crankshaft | 137 | 281165 | *** Washer, Float Bowl Screw |
| | 94196 | Key, Timing Gear | 138 | 281164 | ** Shaft and Lever, Choke |
| 18 | 494238 | Base, Engine | 141 | 494380 | ** Nozzle/Jet, Carburetor |
| 20 | 291675 | * Seal, Oil | 142 | 231793 | High Altitude Kit: |
| 22 | 94624 | Screw, Sems, Base Mounting | | 494499 | 231796 Pilot Jet, High Altitude |
| 23 | 492326 | Flywheel and Ring Gear Assembly, Magneto | | | 281164 Seal, Bowl Screw |
| 24 | 222698 | Key, Flywheel | 147 | 231794 | ** Pilot, Jet |
| 25 | 394661 | Piston Assembly, Standard | 164 | 213811 | Carburetor, Elbow |
| | 394662 | Piston Assembly .010" Oversize | 171 | 281051 | Nut, Air Cleaner Mounting |
| | 394663 | Piston Assembly .020" Oversize | 187 | 393815 | Line, Fuel, 11" (Cut To Suit) |
| | 394664 | Piston Assembly .030" Oversize | 188 | 93535 | Screw, Sems 3/4" |
| 26 | 391780 | Ring Set, Piston, Standard | 201 | 262767 | Link, Governor |
| | 392331 | Ring Set, Piston, Chrome, Standard | 209 | 260871 | Spring, Governor |
| | 391781 | Ring Set, Piston .010" Oversize | 216 | 262766 | Link, Choke |
| | 391782 | Ring Set, Piston .020" Oversize | 219 | 490815 | Oil Slinger, Governor Gear and Bracket Assembly |
| | 391783 | Ring Set, Piston .030" Oversize | | | Plate, Governor Control (Choke-A-Matic) |
| 27 | 260924 | Lock, Piston Pin | 222 | 494887 | Screw, Sem, Air Cleaner |
| 28 | 299691 | Pin Assembly, Piston, Standard | 224 | 94513 | Crank, Governor, 1/4" Diameter |
| | 391286 | Pin Assembly, Piston .005" Over | 225 | 231058 | Lever Assembly, Governor |
| 29 | 490348 | Rod Assembly, Connecting | 227 | 493935 | Washer, Governor Crank, 1/4" I.D. |
| | 490469 | Rod Assembly, Connecting .020" Undersize Crankpin Bore | 230 | 222450 | Spring, Governor Link |
| 31 | 222299 | Lock, Connecting Rod Screw | 232 | 262785 | Filter, Fuel |
| 32 | 92909 | Screw, Connecting Rod | 240 | 394358 | Clamp, Casing |
| 33 | 262246 | Valve, Exhaust | 265 | 221535 | Screw, Clamp Mounting |
| 34 | 262247 | Valve, Intake | 284 | 94419 | Screw, Air Cleaner |
| 35 | 65906 | Spring, Intake Valve | 284A | 94326 | Housing, Blower, Red |
| 36 | 26828 | Spring, Exhaust Valve | 304 | 224504 | Screw, Sems, Blower Housing |
| 37 | 223752 | Guard, Flywheel | 305 | 94619 | Mounting |
| 40 | 221596 | Retainer, Intake Valve | | | Shield, Cylinder |
| 41 | 292260 | Rotocoil, Exhaust Valve | 306 | 224545 | Screw, Sems, Cylinder Shield Mtg. |
| 42 | 93630 | Retainer, Exhaust Valve Rotocoil | 307 | 94623 | Cover, Cylinder Head |
| 45 | 262248 | Tappet-Valve | 308 | 491490 | |
| 46 | 212897 | Gear, Cam | | | |
| 51 | 281170 | *** Gasket, Carburetor (Carburetor to Elbow) | | | |
| 52 | 270872 | * Gasket, Carburetor (Elbow to Cylinder) | | | |
| 53 | 94637 | Stud, Carburetor Mounting | | | |
| 75 | 224061 | Washer, Spring | | | |

* Included in Gasket Set (494241)
 ** Included in Carburetor Overhaul Kit (494384)
 *** Included in both Carburetor Overhaul Kit (494384) and Carburetor Gasket Set (494386)

NOTE: All component dimensions given in U.S. inches
 1 inch = 25.4 mm

REPAIR PARTS

12.5 HP 38" TRACTOR - - MODEL NUMBER 917.255572

BRIGGS & STRATTON ENGINE - MODEL NUMBER 286707, TYPE NUMBER 0437-01

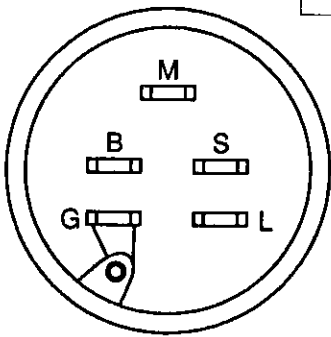
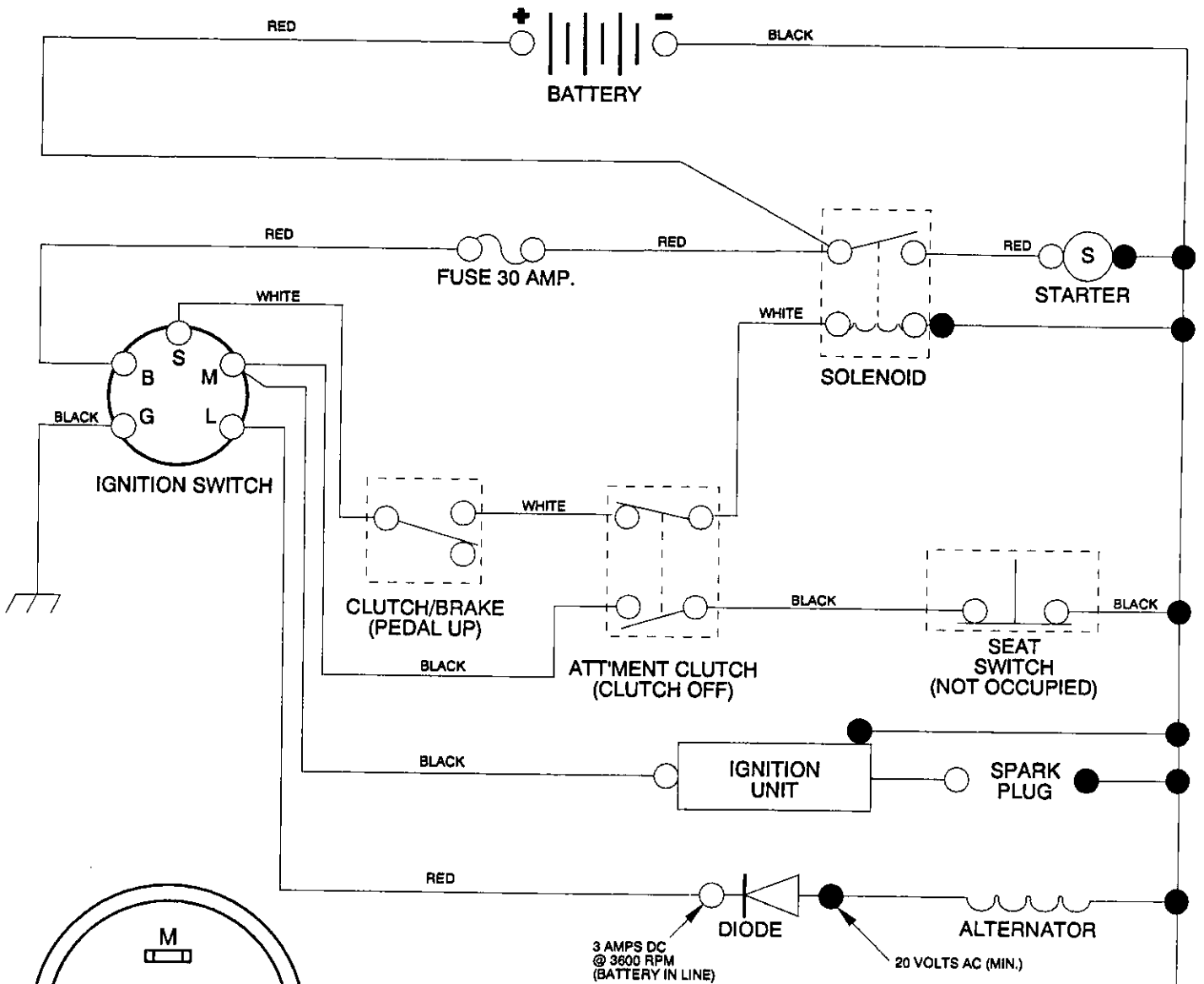
| KEY PART NO. | NO. | DESCRIPTION | KEY PART NO. | NO. | DESCRIPTION |
|--------------|--------|---|--------------|--------|---|
| 309 | --- | Motor, Starting, 12 Volt (see chart on illustrated pages for replacement parts for Starting Motors) | 663 | 94620 | Screw, Hex Head |
| | | | 668 | 280848 | Spacer |
| | | | 726 | 392134 | Gear, Ring (Includes Mounting Parts) |
| 332 | 92284 | Nut, Hex | 727 | 490324 | Cover, Starter (Includes Mounting Screws) |
| 333 | 492341 | Armature, Magneto | 728 | 93535 | Screw, Sems |
| 334 | 93381 | Screw, Sems, Armature Mounting | 729 | 281159 | Clip, Lead Wire |
| 337 | 802592 | Plug, Spark, (1-7/8" or 47 mm) (Resistor Type) | 741 | 262135 | Gear, Timing |
| 346 | 93705 | Screw, Hex Head | 757 | 212359 | Link, Counterweight |
| 356 | 494328 | Wire, Ground | 758 | 399891 | Counterweight Assembly |
| 358 | 494241 | Gasket Set (Includes all items marked *) | 759 | 298909 | Pin, Counterweight |
| 363 | 19203 | Puller, Flywheel | 761 | 93875 | Screw, Counterweight |
| 383 | 89838 | Wrench, Spark Plug | 837 | 231109 | Spacer, Muffler Mounting |
| 422 | 223721 | Clamp, Oil Filler Tube | 842 | 270920 | Seal, Oil Filler Cap |
| 423 | 93984 | Screw, Sems | 847 | 490474 | Fill Group, Oil |
| 445 | 493909 | Cartridge, Air Cleaner | 851 | 221798 | Terminal, Ignition Cable |
| 455 | 222561 | Cup, Screen Mounting | 869 | 261463 | Seat, Intake Valve, Standard |
| 467 | 493903 | Knob, Air Cleaner | 870 | 210940 | Seat, Exhaust Valve, Standard |
| 468 | 222562 | Screen, Flush Rotating | 871 | 261961 | Guide, Exhaust Valve |
| 474 | 393474 | Stator, Alternator, Dual Circuit | 872 | 281104 | Cover, Air Cleaner |
| 482 | 93621 | Screw, Sems | 875 | 494237 | Body, Air Cleaner |
| 523 | 490327 | Cap and Dipstick, Oil Filler | 877 | 393456 | Diode and Connector Assembly, Dual Circuit |
| 524 | 68838 | Seal, Filler Tube | 955 | 94642 | ** Screw, Fuel Bowl |
| 525 | 280741 | Tube, Oil Filler | 965 | 94108 | Locknut, Air Cleaner Mounting |
| 535 | 272403 | Element, Air Cleaner | 975 | 494378 | Bowl Assembly, Carburetor |
| 537 | 281106 | * O-Ring, Air Cleaner | 977 | 494386 | Carburetor Gasket Kit (Includes items marked ***) |
| 552 | 231597 | Bushing, Governor Crank, 1/4" I.D. | 987 | 281166 | ** Seal, Throttle Shaft |
| 562 | 92613 | Boit, Governor Lever | 1005 | 280687 | Fan, Flywheel |
| 592 | 231082 | Nut, Hex #10-24 | 1006 | 223726 | Retainer, Fan |
| 601 | 93053 | Clamp, Fuel Pipe | 1020 | 262243 | Eccentric |
| 611 | 494451 | Fuel Inlet Tube | 1021 | 94160 | Pin, Eccentric |
| 614 | 93306 | Cotter, Hair Pin | | | |
| 615 | 93307 | Retainer, E-Ring | | | |
| 618 | 262803 | Spring, Choke Return | | | |
| 634 | 281168 | ** Seal, Choke Shaft | | | |
| 634A | 491323 | * Seal, Governor | | | |
| 634B | 281167 | Washer, Throttle Shaft | | | |
| 635 | 66538 | Elbow, Spark Plug | | | |
| 646 | 224486 | Brace, Air Cleaner | | | |
| 657 | 93496 | Screw, Sems | | | |

* Included in Gasket Set (494241)
 ** Included in Carburetor Overhaul Kit (494384)
 *** Included in both Carburetor Overhaul Kit (494384) and Carburetor Gasket Set (494386)

NOTE: All component dimensions given in U.S. inches
 1 inch = 25.4 mm

12.5 HP 38" TRACTOR - - MODEL NUMBER 917.255572

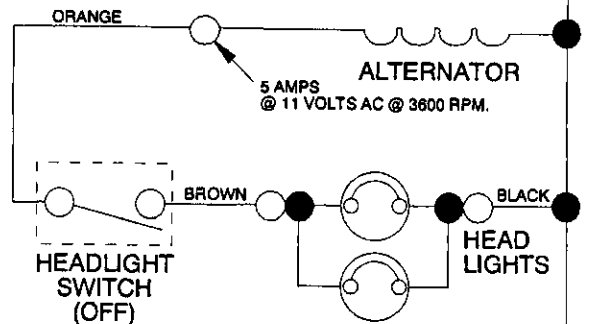
SCHEMATIC



IGNITION SWITCH

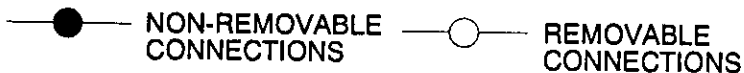
| POSITION | CIRCUIT |
|----------|---------|
| OFF | M + G |
| ON | B + L |
| START | B + S |

NOTE
 YOUR TRACTOR IS EQUIPPED WITH A SPECIAL ALTERNATOR SYSTEM. THE LIGHTS ARE NOT CONNECTED TO THE BATTERY, BUT HAVE THEIR OWN ELECTRICAL SOURCE. BECAUSE OF THIS, THE BRIGHTNESS OF THE LIGHTS WILL CHANGE WITH ENGINE SPEED. AT IDLE THE LIGHTS WILL DIM. AS THE ENGINE IS SPEEDED UP, THE LIGHTS WILL BECOME THEIR BRIGHTEST.



WIRING INSULATED CLIPS

NOTE: If wiring insulated clips were removed for servicing of unit, they should be replaced to properly secure your wiring.



SERVICE NOTES
