

SEARS

**OWNER'S
MANUAL**

**MODEL NO.
917.255581**

Caution:
Read and follow
all Safety Rules
and Instructions
Before Operating
This Equipment

3One
Convertible



CRAFTSMAN[®]

**12.5 HP I/C
ELECTRIC START
3 in One Convertible
42" MOWER DECK
6 SPEED TRANSAXLE
LAWN TRACTOR**

- Assembly
- Operation
- Customer Responsibilities
- Service and Adjustment
- Repair Parts



SAFETY RULES

Safe Operation Practices for Ride-On Mowers



IMPORTANT: THIS CUTTING MACHINE IS CAPABLE OF AMPUTATING HANDS AND FEET AND THROWING OBJECTS. FAILURE TO OBSERVE THE FOLLOWING SAFETY INSTRUCTIONS COULD RESULT IN SERIOUS INJURY OR DEATH.

I. GENERAL OPERATION

- Read, understand, and follow all instructions in the manual and on the machine before starting.
- Only allow responsible adults, who are familiar with the instructions, to operate the machine.
- Clear the area of objects such as rocks, toys, wire, etc., which could be picked up and thrown by the blade.
- Be sure the area is clear of other people before mowing. Stop machine if anyone enters the area.
- Never carry passengers.
- Do not mow in reverse unless absolutely necessary. Always look down and behind before and while backing.
- Be aware of the mower discharge direction and do not point it at anyone. Do not operate the mower without either the entire grass catcher or the guard in place.
- Slow down before turning.
- Never leave a running machine unattended. Always turn off blades, set parking brake, stop engine, and remove keys before dismounting.
- Turn off blades when not mowing.
- Stop engine before removing grass catcher or unclogging chute.
- Mow only in daylight or good artificial light.
- Do not operate the machine while under the influence of alcohol or drugs.
- Watch for traffic when operating near or crossing roadways.
- Use extra care when loading or unloading the machine into a trailer or truck.

II. SLOPE OPERATION

Slopes are a major factor related to loss-of-control and tipover accidents, which can result in severe injury or death. All slopes require extra caution. If you cannot back up the slope or if you feel uneasy on it, do not mow it.

DO:

- Mow up and down slopes, not across.
- Remove obstacles such as rocks, tree limbs, etc.
- Watch for holes, ruts, or bumps. Uneven terrain could overturn the machine. *Tall grass can hide obstacles.*
- Use slow speed. Choose a low gear so that you will not have to stop or shift while on the slope.
- Follow the manufacturer's recommendations for wheel weights or counterweights to improve stability.
- Use extra care with grass catchers or other attachments. These can change the stability of the machine.
- Keep all movement on the slopes *slow and gradual*. Do not make sudden changes in speed or direction.
- Avoid starting or stopping on a slope. If tires lose traction, disengage the blades and proceed slowly *straight* down the slope.

DO NOT:

- *Do not* turn on slopes unless necessary, and then, turn slowly and gradually downhill, if possible.
- *Do not* mow near drop-offs, ditches, or embankments. The mower could suddenly turn over if a wheel is over the edge of a cliff or ditch, or if an edge caves in.
- *Do not* mow on wet grass. Reduced traction could cause sliding.
- *Do not* try to stabilize the machine by putting your foot on the ground.
- *Do not* use grass catcher on steep slopes.

III. CHILDREN

Tragic accidents can occur if the operator is not alert to the presence of children. Children are often attracted to the machine and the mowing activity. *Never* assume that children will remain where you last saw them.

- Keep children out of the mowing area and under the watchful care of another responsible adult.
- Be alert and turn machine off if children enter the area.
- Before and when backing, look behind and *down* for small children.
- Never carry children. They may fall off and be seriously injured or interfere with safe machine operation.
- Never allow children to operate the machine.
- Use extra care when approaching blind corners, shrubs, trees, or other objects that may obscure vision.

IV. SERVICE

- Use extra care in handling gasoline and other fuels. They are flammable and vapors are explosive.
 - Use only an approved container.
 - Never remove gas cap or add fuel with the engine running. Allow engine to cool before refueling. Do not smoke.
 - Never refuel the machine indoors.
 - Never store the machine or fuel container inside where there is an open flame, such as a water heater.
- Never run a machine inside a closed area.
- Keep nuts and bolts, especially blade attachment bolts, tight and keep equipment in good condition.
- Never tamper with safety devices. Check their proper operation regularly.
- Keep machine free of grass, leaves, or other debris build-up. Clean oil or fuel spillage. Allow machine to cool before storing.
- Stop and inspect the equipment if you strike an object. Repair, if necessary, before restarting.
- Never make adjustments or repairs with the engine running.
- Grass catcher components are subject to wear, damage, and deterioration, which could expose moving parts or allow objects to be thrown. Frequently check components and replace with manufacturer's recommended parts, when necessary.
- Mower blades are sharp and can cut. Wrap the blade(s) or wear gloves, and use extra caution when servicing them.
- Check brake operation frequently. Adjust and service as required.



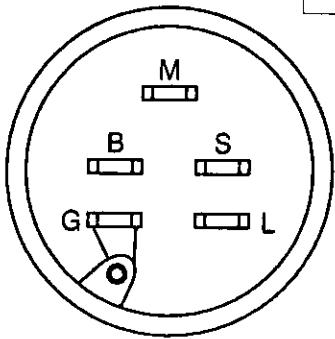
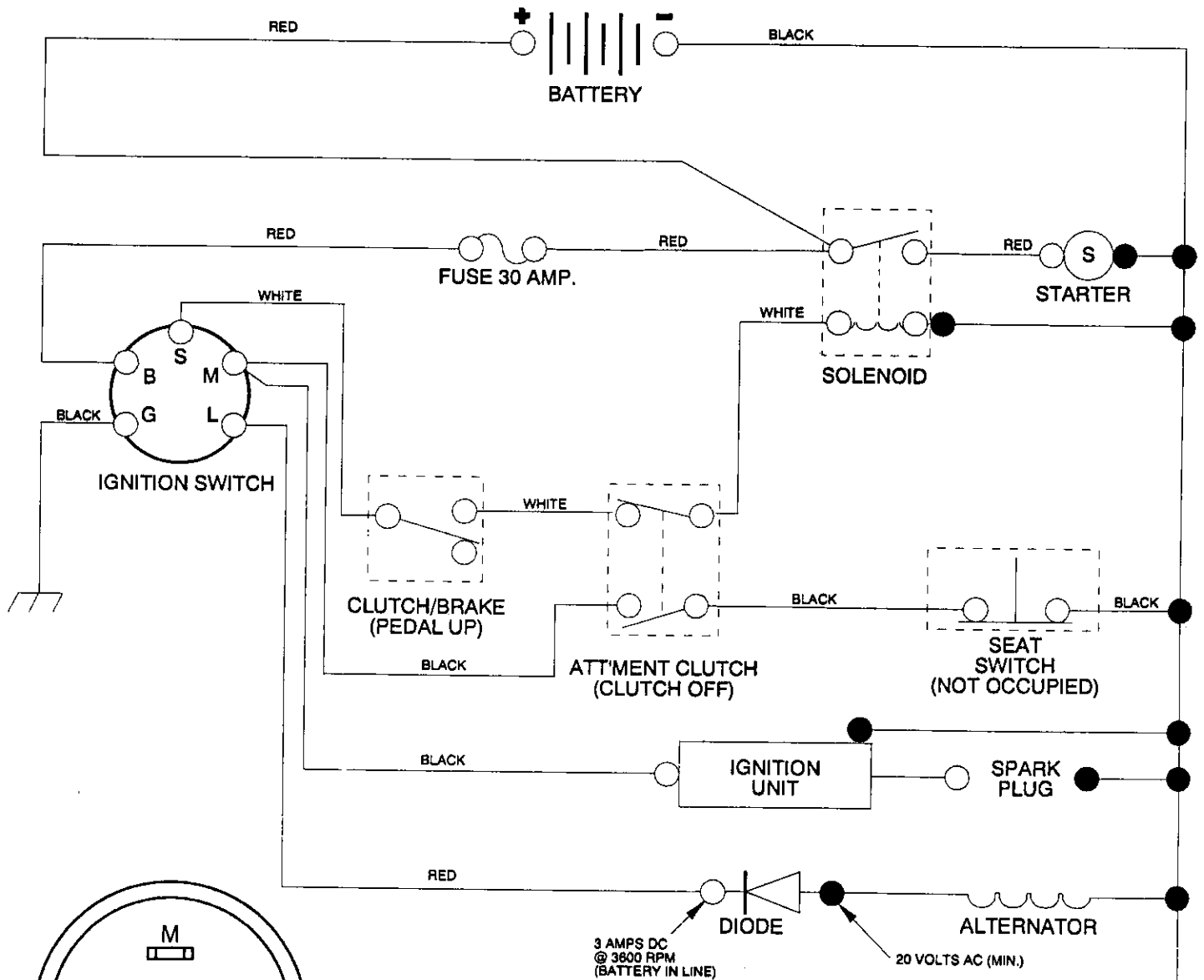
Look for this symbol to point out important safety precautions. It means CAUTION!!! BECOME ALERT!!! YOUR SAFETY IS INVOLVED.



CAUTION: Always disconnect spark plug wire and place wire where it cannot contact spark plug in order to prevent accidental starting when setting up, transporting, adjusting or making repairs.

12.5 HP 42" RIDING LAWN TRACTOR - - MODEL NUMBER 917.255581

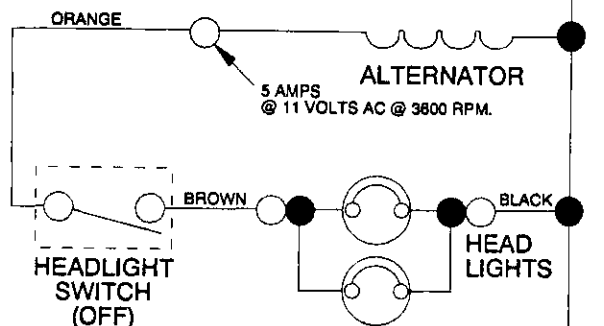
SCHEMATIC



IGNITION SWITCH

POSITION	CIRCUIT
OFF	M + G
ON	B + L
START	B + S

NOTE
 YOUR TRACTOR IS EQUIPPED WITH A SPECIAL ALTERNATOR SYSTEM. THE LIGHTS ARE NOT CONNECTED TO THE BATTERY, BUT HAVE THEIR OWN ELECTRICAL SOURCE. BECAUSE OF THIS, THE BRIGHTNESS OF THE LIGHTS WILL CHANGE WITH ENGINE SPEED. AT IDLE THE LIGHTS WILL DIM. AS THE ENGINE IS SPEEDED UP, THE LIGHTS WILL BECOME THEIR BRIGHTEST.



WIRING INSULATED CLIPS

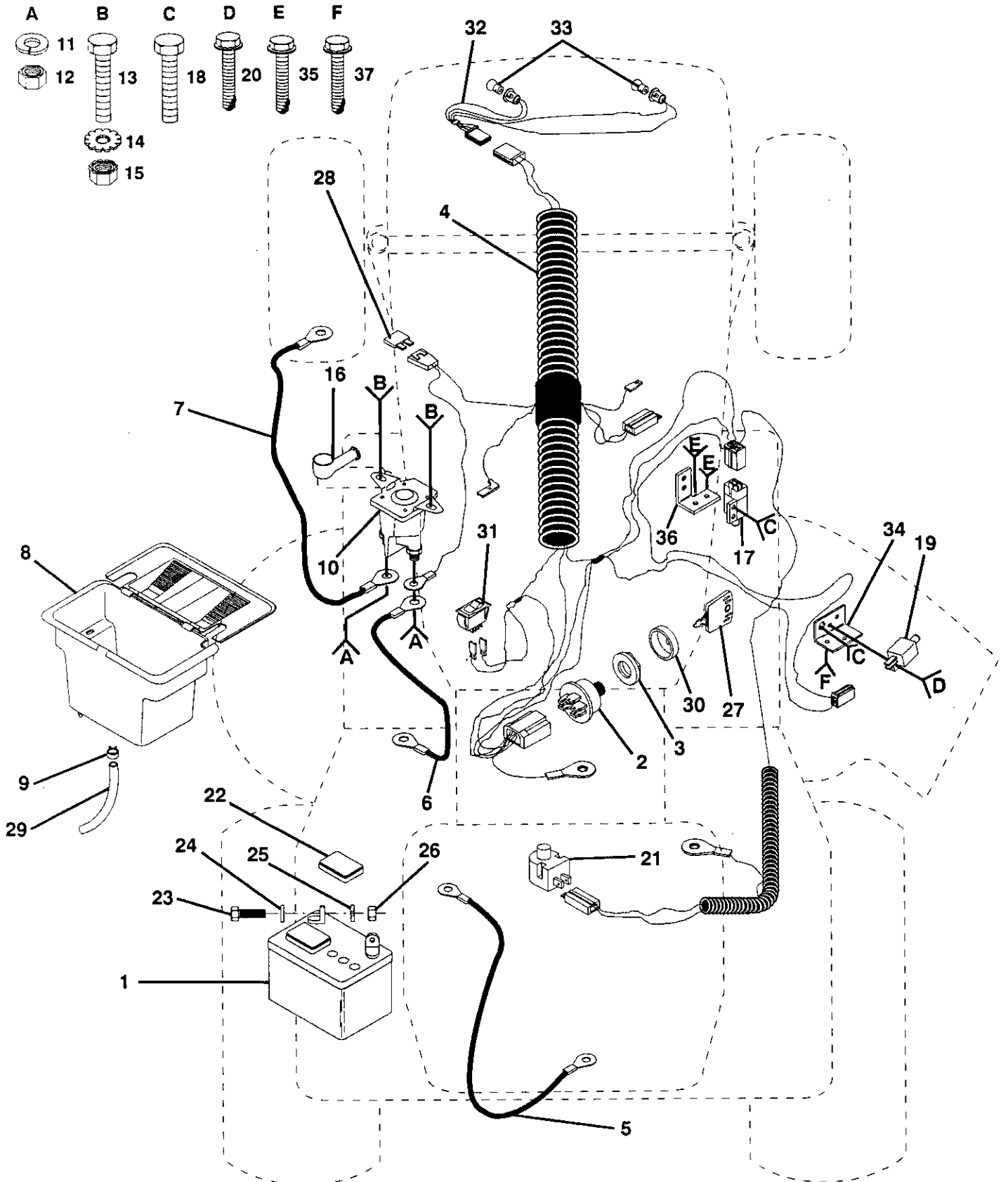
NOTE: If wiring insulated clips were removed for servicing of unit, they should be replaced to properly secure your wiring.

● NON-REMOVABLE CONNECTIONS ○ REMOVABLE CONNECTIONS

REPAIR PARTS

12.5 HP 42" RIDING LAWN TRACTOR - - MODEL NUMBER 917.255581

ELECTRICAL



REPAIR PARTS

12.5 HP 42" RIDING LAWN TRACTOR - - MODEL NUMBER 917.255581

ELECTRICAL

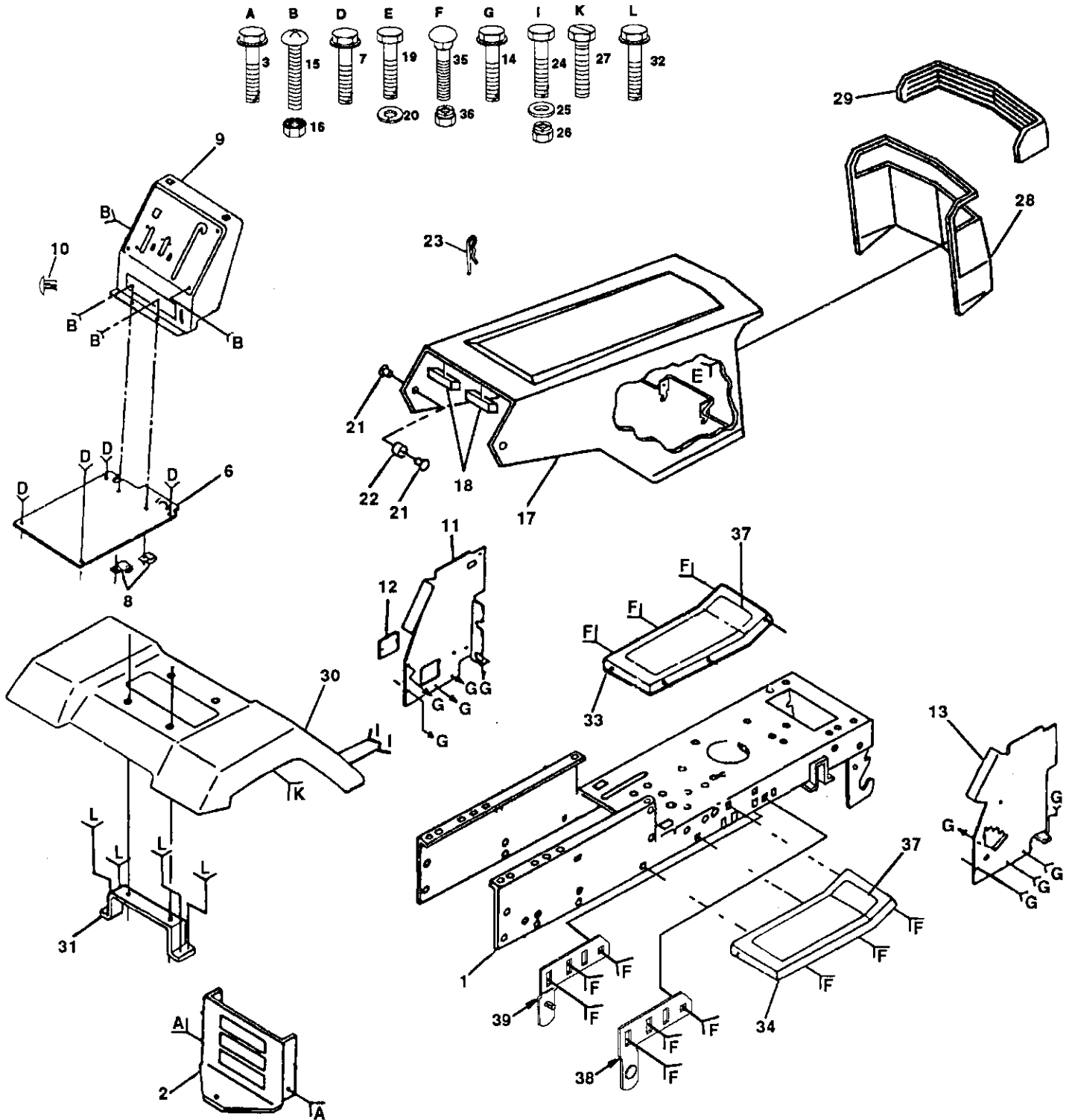
KEY PART NO. NO.	DESCRIPTION	KEY PART NO. NO.	DESCRIPTION		
1	121265X	Battery 12 Volt 25 Amp	21	121305X	Switch Plunger Nc Gray
2	STD365402	Starter Swtc	22	121264X	Caps Battery 20/25/30 Amp
3	124211X	Nut Ignition	23	74760412	Bolt Hex Hd 1/4-20unc X 3/4
4	132653	Harness Ign B&s Fender HI	24	STD551025	Washer
5	4207J	Cable Ground 6ga 12"black	25	STD551125	Washer
6	132202	Cable Battery 6 Ga 43"red	26	STD541025	Nut
7	4799J	Cable Battery 6ga 11"red	27	109310X	Key Ign Molded Craftsman
8	129965	Case Battery Hng Mech W/lid	28	108824X	Fuse 30 Amp Auto Green
9	109596X	Clamp Hose Olive	29	109238X	Tube Plastic 12"
10	109081X	Solenoid	30	123620X	Cover Sw Key Blk 1 25 Text Sit
11	STD551125	Lockwasher	31	110712X	Switch Light Blk Blk Red
12	73350400	Nut Jam Hex 1/4-20 Unc	32	127441X	Harness Socket Light
13	74780408	Bolt Fin Hex 1/4-20uncx1/2 Gr5	33	7662J	Bulb Light #1141
14	STD551225	Washer	34	108236X	Bracket Switch Clutch
15	STD541425	Nut	35	STD601005	Screw
16	131563	Cover Terminal Red	36	130890	Bracket Switch Interlock
17	109553X	Switch Intlk Clutch Red 4 Term	37	STD601005	Screw
18	STD601005	Screw			
19	104445X	Switch Intlk Clutch Red 2 Term			
20	STD601005	Screw			

NOTE: All component dimensions given in U.S. inches
1 inch = 25.4 mm

REPAIR PARTS

12.5 HP 42" RIDING LAWN TRACTOR - - MODEL NUMBER 917.255581

CHASSIS AND ENCLOSURES



REPAIR PARTS

12.5 HP 42" RIDING LAWN TRACTOR - - MODEL NUMBER 917.255581

CHASSIS AND ENCLOSURES

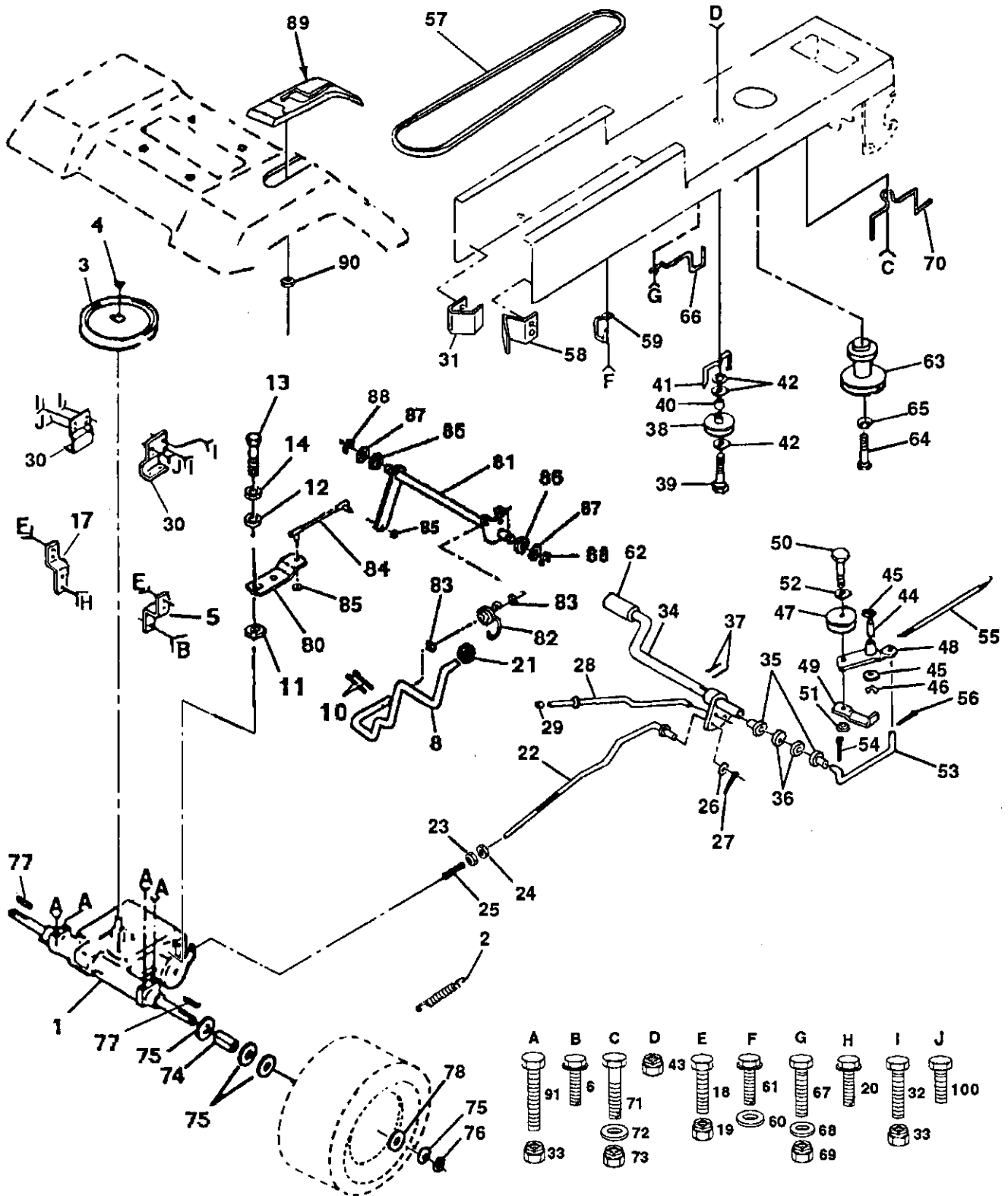
KEY NO.	PART NO.	DESCRIPTION	KEY NO.	PART NO.	DESCRIPTION
1	135034	Chassis Weldment	22	124479X	Washer Nylon Blk 28x 75x 19
2	130805	Drawbar 11 Ga 46 5"wheel Base	23	4921H	Retainer Spring
3	17490612	Screw Thdrol 3/8-16x3/4 Ty-tt	24	STD523707	Bolt
6	126595X010	Saddle Silkscreened	25	19131312	Washer 13/32 X 13/16 X 12 Ga
7	17490608	Screw Thdrol 3/8-16x1/2 Ty-tt	26	STD541437	Nut
8	126471X	Clip Insulated 406 Mtg Hole	27	17490608	Screw Thdrol 3/8-16x1/2 Ty-tt
9	126604X010	Dash Silkscreened Sears Eng	28	126741X	Grille Black
10	5479J	Plug Button Blk 359 Dia	29	124029X	Lens Headlight Bar Clear
11	135464	Panel Pnt Dash Lh	30	126599X459	Fender Pnt
12	121794X	Cover Access Black Square	31	109873X	Bracket Pnt Fender
13	124031X012	Panel Silkscr Dash Rh Weldment	32	17490612	Screw Thdrol 3/8-16x3/4 Ty-tt
14	17490608	Screw Thdrol 3/8-16x1/2 Ty-tt	33	105465X459	Footrest Pnt Lh
15	74180512	Screw Mach Trhd 5/16-18uncx3/4	34	105464X459	Footrest Pnt Rh (dover Gray)
16	STD541431	Nut	35	STD533707	Bolt
17	131445X459	Hood Asm Pnt Weld Dover Slpe	36	STD541437	Nut
18	126938X	Bumper Hood	37	105466X	Pad Footrest Rbr Sq Craftsman
19	STD512505	Screw	38	134775	Bracket, Assembly, Pivot R.H.
20	STD551125	Washer	39	134774	Bracket, Assembly, Pivot L.H.
21	122933X	Rivet Ratchet Nylon			

NOTE: All component dimensions given in U.S. inches
1 inch = 25.4 mm

REPAIR PARTS

12.5 HP 42" RIDING LAWN TRACTOR -- MODEL NUMBER 917.255581

DRIVE



REPAIR PARTS

12.5 HP 42" RIDING LAWN TRACTOR - - MODEL NUMBER 917.255581

DRIVE

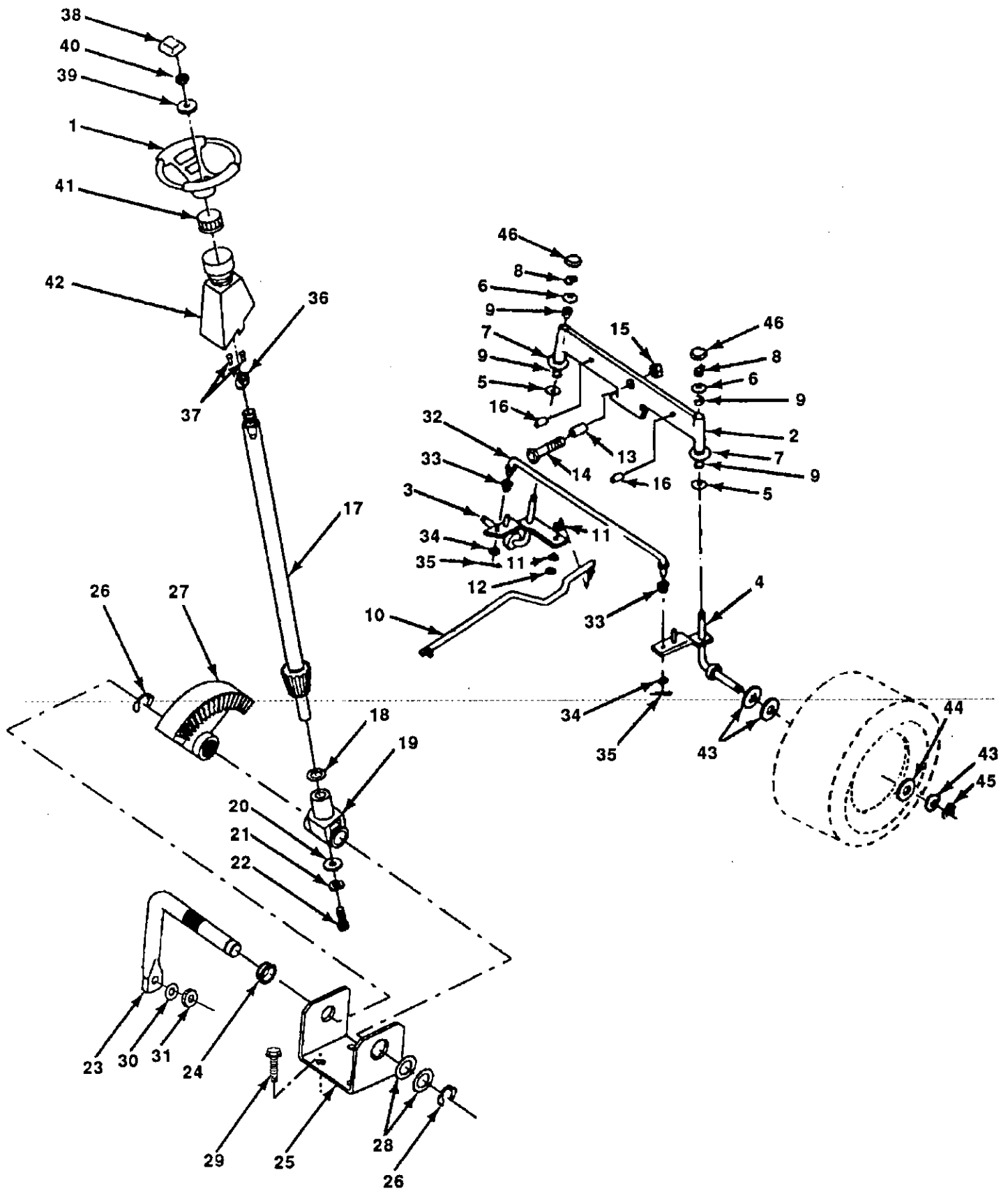
KEY PART NO. NO.	DESCRIPTION	KEY PART NO. NO.	DESCRIPTION
1	120898X	50	STD523715 Bolt
2	110422X	51	STD541437 Nut
3	123666X	52	STD551037 Washer
4	12000028	53	105710X Link Clutch 7 66
5	121520X	54	STD561210 Pin
6	17490512	55	105709X Spring Return Clutch 6 75
8	127270	56	STD561210 Pin
10	76020416	57	130801 V-belt Ground Drive 95 25
11	105701X	58	127274X Keeper Belt Rh Lt Pnt/zinc 16g
12	19151216	59	104777X Retainer Belt Chassis Lh Zinc
13	71040412	60	19131312 Washer 13/32 X 13/16 X 12 Ga
14	STD551125	61	17490612 Screw Thdrol 3/8-16x3/4 Ty-tt
17	121250X	62	8883R Cover Pedal Blk Round
18	STD523707	63	134825 Pulley Engine
19	STD541437	64	71170764 Bolt Fin Hex 7/16-20 x 4 Gr.5
20	17490512	65	STD551143 Washer
21	106933X	66	129921 Keeper Belt Engine Lh Lt
22	130804	67	STD523710 Bolt
23	STD541437	68	19131312 Washer 13/32 X 13/16 X 12 Ga
24	STD541237	69	STD541437 Nut
25	106888X	70	134683 Guide Belt Dr Mower Rh
26	STD551037	71	STD523710 Bolt
27	STD561210	72	19132012 Washer 13/32 X 1-1/4 X 12 Ga
28	128904	73	STD541437 Nut
29	124236X	74	109502X Spacer Split 80 X 94
30	130807	75	121749X Washer 25/32 X 1 1/4 X 16 Ga
31	127275X	76	STD581075 E Ring
32	STD523107	77	123583X Key Square 2 0 X 1845/ 1865
33	STD541431	78	121748X Washer 25/32 X 1 5/8 X 16ga
34	122424X	80	131488 Arm, Shift
35	120183X	81	131489 Shaft Asm., Cross Stretch
36	STD551062	82	123782X Spring Torsion
37	STD571810	83	19171216 Washer 17/32 x 3/4 x 16 Ga.
38	123674X	84	132182 Rod Tie Shft. Adj. Ball
39	STD523727	85	73530400 Nut, Nylock
40	4470J	86	127272X Bushing Pivot
41	109070X	87	126591X Washer
42	19131312	88	STD581050 Ring, E
43	STD541437	89	131636 Console Shift 6sp W/ign Lt
44	105706X	90	124346X Nut Self-thd Wsh-hd 1/4 Zinc
45	110812X	91	STD523707 Bolt
46	12000039	100	17490612 Screw Thdrol 3/8 - 16 x 3/4
47	127783		
48	123789X		
49	123205X		

NOTE: All component dimensions given in U.S. inches
1 inch = 25.4 mm

REPAIR PARTS

12.5 HP 42" RIDING LAWN TRACTOR - - MODEL NUMBER 917.255581

STEERING ASSEMBLY



REPAIR PARTS

12.5 HP 42" RIDING LAWN TRACTOR - - MODEL NUMBER 917.255581

STEERING ASSEMBLY

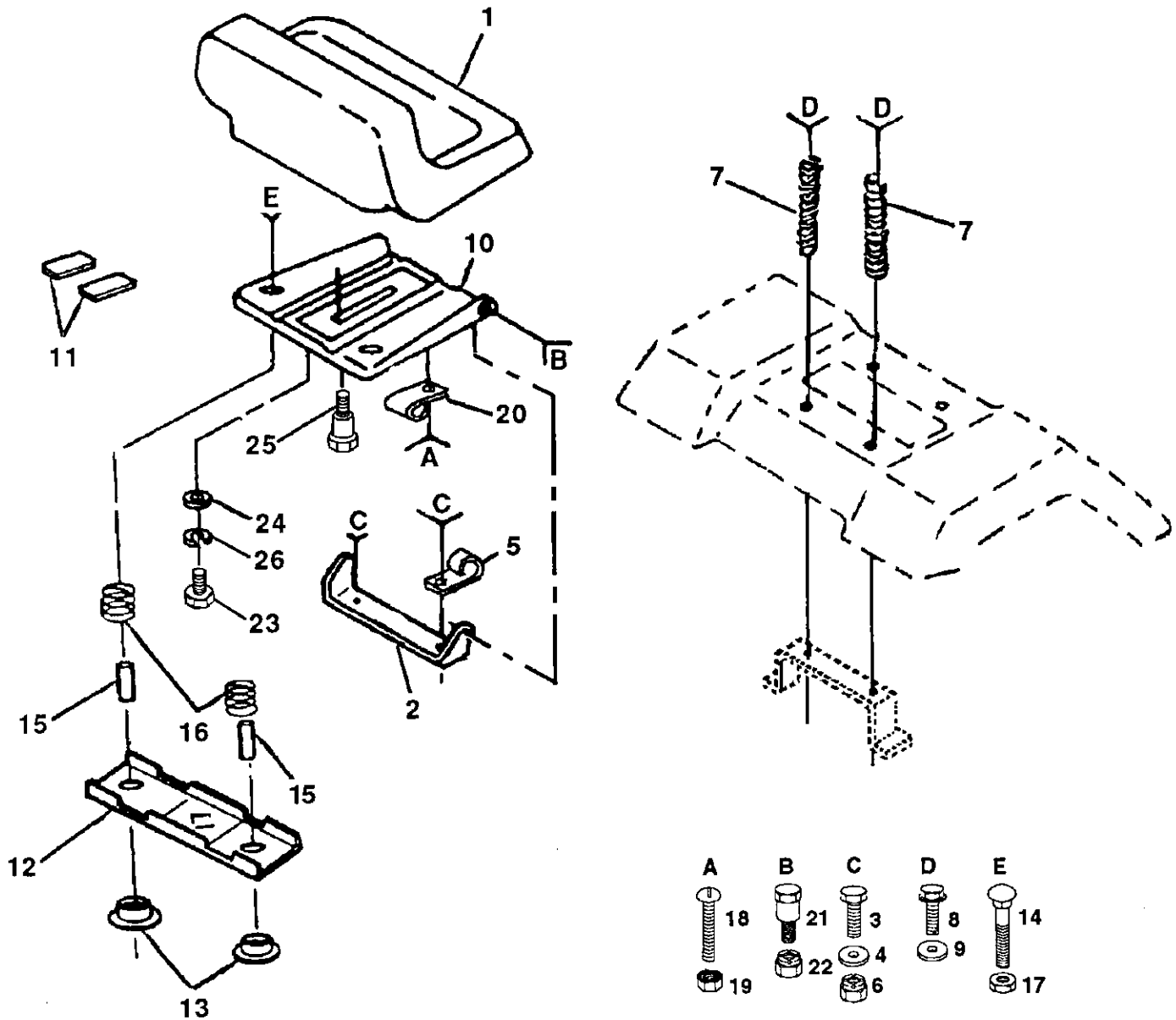
KEY NO.	PART NO.	DESCRIPTION	KEY NO.	PART NO.	DESCRIPTION
1	133741	Wheel Steering	24	109816X	Nyliner Snap In
2	131450	Axle Asm Front	25	124036X	Bracket Steering
3	135227	Spindle Asm Lh	26	12000029	Ring Klip #t5304-75
4	135228	Spindle Asm Rh	27	124034X	Gear Sector
5	6266H	Bearing Race Thrust Harden	28	6266H	Bearing Race Thrust Harden
6	121748X	Washer 25/32 X 1 5/8 X 16ga	29	17490612	Screw Thdrol 3/8-16x3/4 Ty-tt
7	19272016	Washer 27/32 X 1 1/4 X 16 Ga	30	STD551137	Lockwasher
8	12000029	Ring Klip #t5304-75	31	73610600	Nut Fin Hex 3/8-24 Unf
9	3366R	Bearing Col Strg Blk	32	130465	Rod Tie Wire Form 19 75 Mech
10	130468	Link Drag Sol Ball Jt 20 064	33	120754X	Bushing Rod Tie Blk Lt
11	STD551137	Lockwasher	34	19131416	Washer 13/32 X 7/8 X 16ga
12	73610600	Nut Fin Hex 3/8-24 Unf	35	STD561210	Pin
13	110438X	Spacer Bearing Axle Front	36	132196	Bushing Strg 5/8 Id Dash
14	74011056	Bolt Hex 5/8-11 Unc X 3-1/2	37	STD611005	Screw
15	73601000	Nut Hex Jam Lk W/wh 5/8-11 Unc	38	133742	Insert Cap Strg Wh Au Gen Blk
16	132624	Pin Axle 5/8 X 1 55/1 54 Lg	39	19133808	Washer 13/32 X 2-3/8 X 8 Ga
17	132614	Shaft Asm Strg 5/8 X 15 19 Lt	40	STD541537	Gripco Nut
18	57079	Washer Thrust 515x 750x 033	41	104820X	Adaptor Wheel Strg 640/ 635id
19	124035X	Support Shaft	42	124417X	Boot Shaft Steering
20	126684X	Washer Shim 1/4 X 5/8 X 062	43	121749X	Washer 25/32 X 1 1/4 X 16 Ga
21	STD551125	Washer	44	121748X	Washer 25/32 X 1 5/8 X 16ga
22	71070410	Screw Hex Socket 1/4-20 X 5/8	45	12000029	Ring Klip #t5304-75
23	127501	Shaft Asm Pittman	46	121232X	Cap Spindle Fr Top Blk

NOTE: All component dimensions given in U.S. inches
1 inch = 25.4 mm

REPAIR PARTS

12.5 HP 42" RIDING LAWN TRACTOR - - MODEL NUMBER 917.255581

SEAT ASSEMBLY



KEY PART NO. NO.

DESCRIPTION

1	127438X	Seat V-450 Blk/red Craftsman
2	126656X	Bracket Pnt Pivot Seat (blk)
3	STD523707	Bolt
4	19131210	Washer 13/32 X 3/4 X 10 Ga
5	2751R	Clip Line Fuel 13/32 Mtg Hole
6	STD541437	Nut
7	124181X	Spring Seat Cprsn 2 250 Blk Zi
8	17490616	Screw Thdrol 3/8-16 X 1 Ty-tt
9	19131614	Washer 13/32 X 1 X 14 Ga
10	131451	Pan Pnt Seat (blk)
11	121251X	Strip Foam Gray Or Black
12	121246X	Bracket Pnt Mounting Switch
13	121248X	Bushing Snap Blk Nyl 50 Id
14	72050411	Bolt Rdhd Sht Nk 1/4-20x1-3/8

KEY PART NO. NO.

DESCRIPTION

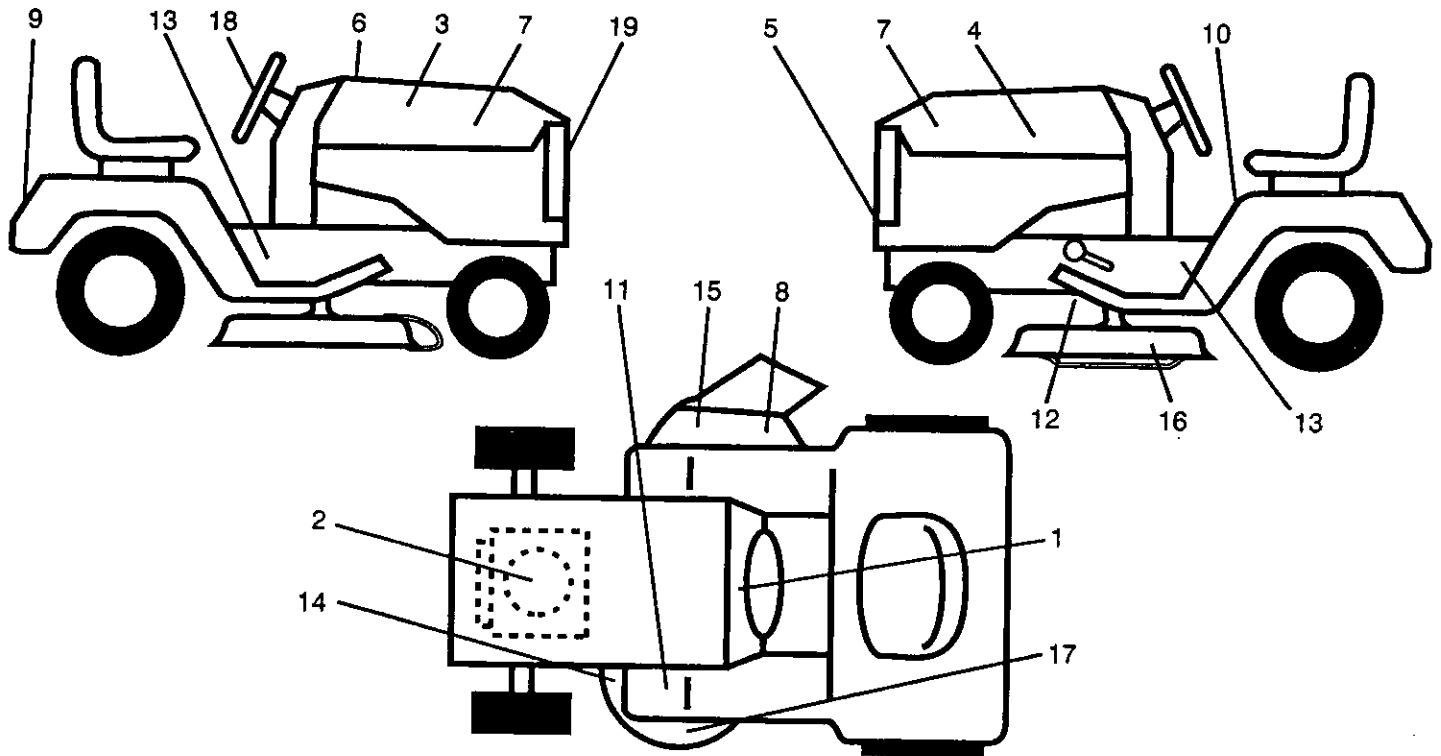
15	134300	Spacer Split 28 X 88 Zinc
16	121250X	Spring Cprsn 1 27 Blk Pnt
17	123976X	Nut Lock 1/4 Lge Flg Gr 5 Zinc
18	STD511005	Screw
19	73951000	Nut Keps #10-32 Unf
20	4171R	Clip Insulated 11/32 Mtg Hole
21	105529X	Bolt Shoulder 5/16-18 Unc Blkz
22	STD541431	Nut
23	74780814	Bolt Fin Hex 1/2-13 X 7/8 Gr 5
24	19171912	Washer 17/32 X 1-3/16 X 12 Ga
25	127018X	Bolt Shoulder 5/16-18 X 62
26	STD551150	Lockwasher

NOTE: All component dimensions given in U.S. inches
1 inch = 25.4 mm

REPAIR PARTS

12.5 HP 42" RIDING LAWN TRACTOR - - MODEL NUMBER 917.255581

DECALS



KEY PART NO. NO.

DESCRIPTION

1	108456X	Decal Instruction Operat Eng
2	127908	Decal Eng 12 5hp Ic Gold Craft
3	128381	Decal Hood Rh Craftsman Lt4000
4	128382	Decal Hood Lh Craftsman Lt4000
5	132674	Decal Grille Lt4000 Craft Usa
6	133644	Decal Maint Cust Sears Domesti
7	136332	Decal Panel Side l/c Gold Wht
8	133178	Decal Mower 3 In One Conv
9	128314	Decal Fender Craftsman White
10	133796	Decal Caution English
11	4900J	Decal Clutch/brake English

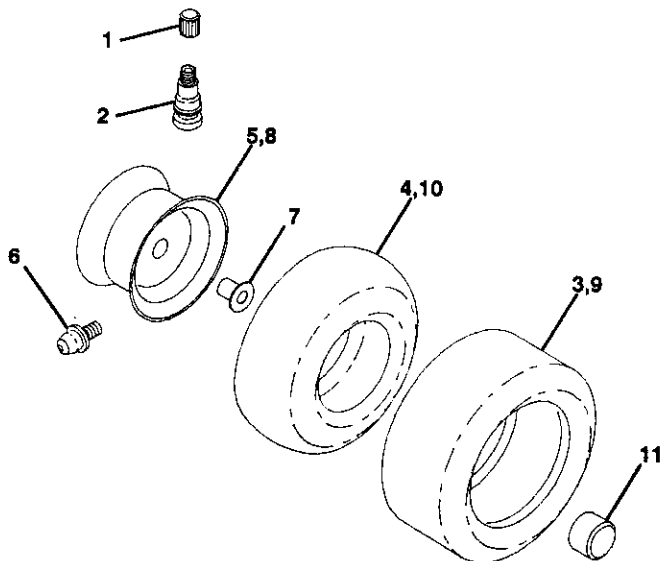
KEY PART NO. NO.

DESCRIPTION

12	109199X	Decal V-belt Dr Sch Tractor E
13	131473	Decal Chassis 6sp 42"
14	130981	Decal V-belt Schematic 42"eng
15	121343X	Decal Danger English
16	3713J	Decal Rota Blades English
17	133179	Decal Mower Qc System
18	132268	Decal Insr Wh Strg Crafts Usa
19	131265	Decal, Lightbox Grill
--	135828	Manual Owners

NOTE: All component dimensions given in U.S. inches
1 inch = 25.4 mm

WHEELS & TIRES



KEY PART NO. NO.

DESCRIPTION

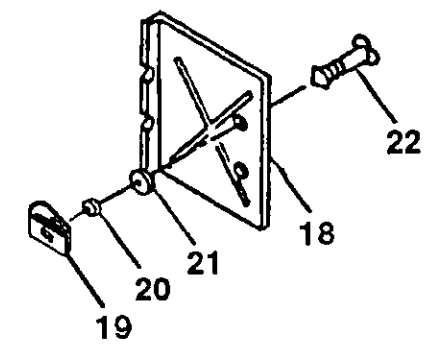
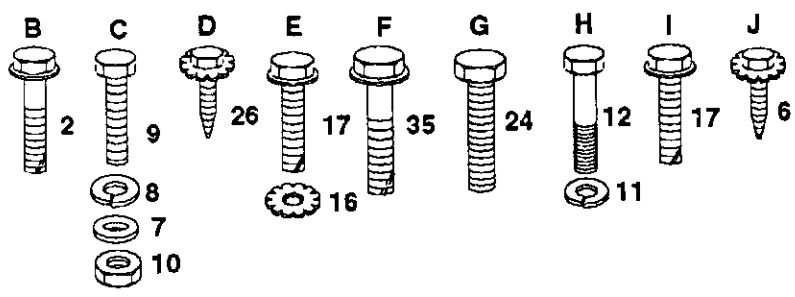
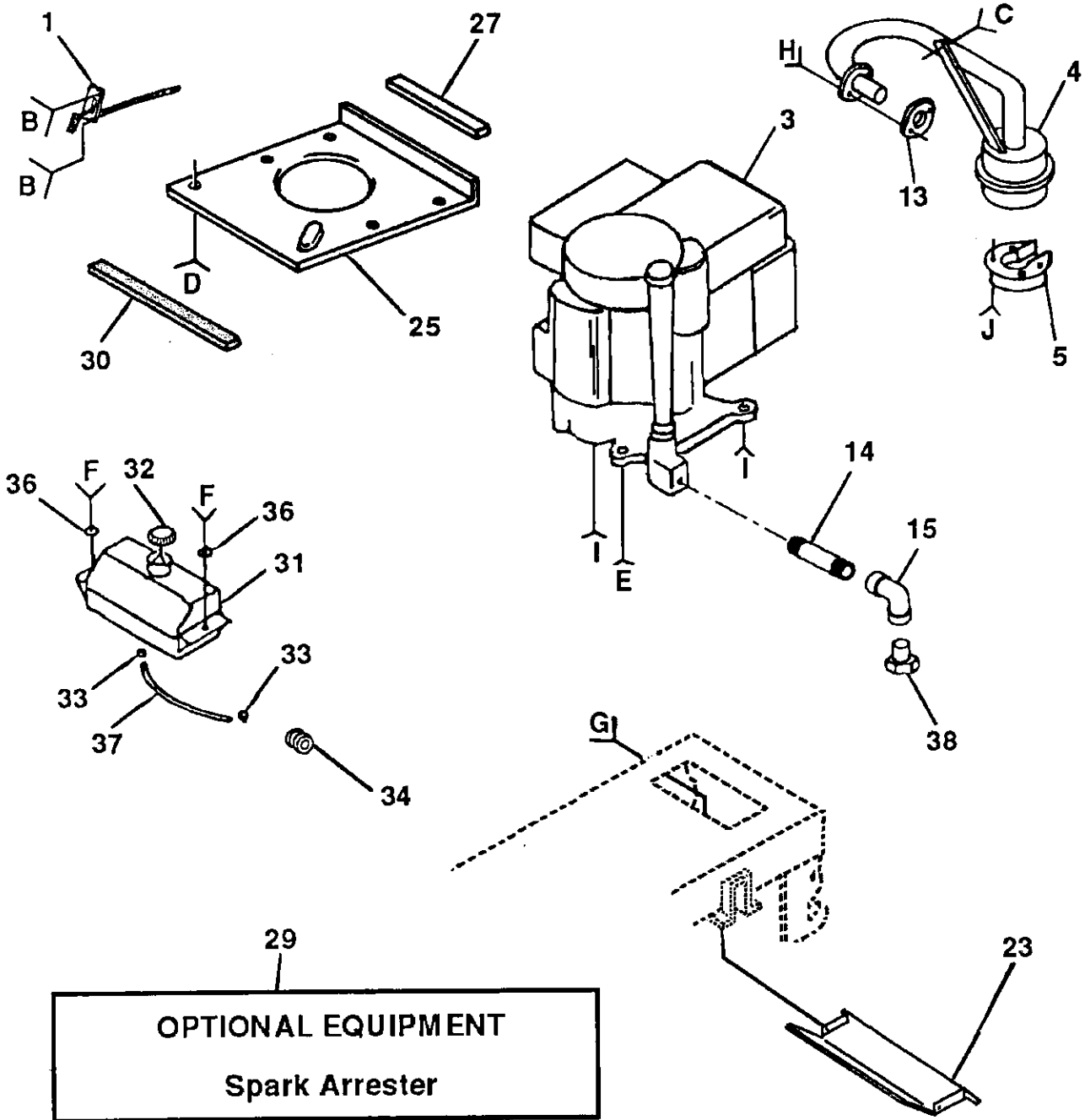
1	59192	Cap Valve Tire
2	65139	Stem Valve
3	106222X	Tire F Ts 15 X 6 0 - 6 Service
4	59904	Tube Front (Service Item Only)
5	106732X311	Rim Asm 6"front White Service
6	278H	Fitting Grease (Front Wheel Only)
7	9040H	Bearing Flange (Front Wheel Only)
8	106108X311	Rim Asm 8"rear White Service
9	106268X	Tire R Ts 18x9 5-8 C Service
10	7152J	Tube Rear (Service Item Only)
11	104757X	Cap Axle Blk 1 50 X 1 00

NOTE: All component dimensions given in U.S. inches
1 inch = 25.4 mm

REPAIR PARTS

12.5 HP 42" RIDING LAWN TRACTOR - - MODEL NUMBER 917.255581

ENGINE



REPAIR PARTS

12.5 HP 42" RIDING LAWN TRACTOR - - MODEL NUMBER 917.255581

ENGINE

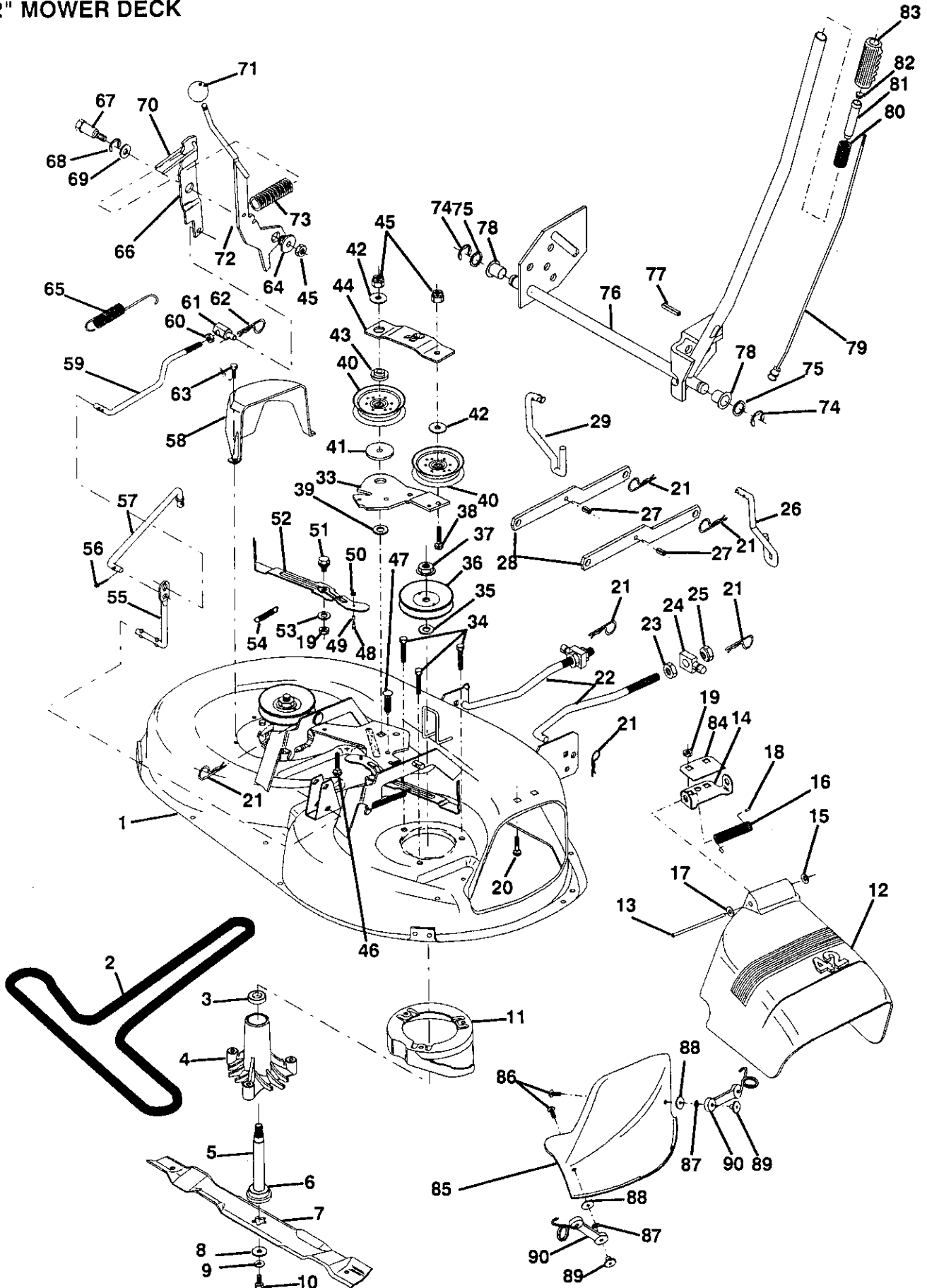
KEY NO.	PART NO.	DESCRIPTION	KEY NO.	PART NO.	DESCRIPTION
1	132759	Control Throt Rh Blk Pdl 15 10	21	STD551025	Washer
2	17720410	Screw Hex Thd Cut 1/4-20x5/8 T	22	123650X	Stud 1/4 Turn (replaces 105751
3	131953	Engine B&s 12 5 Icq Dual 1 Vt	23	128953X	Shield Pnt Heat Browning Grass
4	125610X	Muffler Exhaust B&s Lt Dom	24	STD601005	Screw
5	101326L	Deflector Muffler # 222573	25	124027X	Shield Pnt Heat Hood Lt
6	17030808	Screw Spiderloc Hexhd#8x1/2 Ab	26	17030808	Screw Spiderloc Hexhd#8x1/2 Ab
7	STD551025	Washer	27	105037X	Strip Foam 18"
8	STD551125	Washer	29	121851X	Arrestor Spark
9	STD522510	Bolt	30	127057X	Pinch Weld Hood Black 2 00
10	STD541031	Nut	31	109202X	Tank Fuel 1 25 Fr
11	STD551131	Lockwasher	32	123549X	Cap Asm Fuel W/sym Vented
12	71070510	Screw Hexhd Cap 5/16-18x5/8	33	123487X	Clamp Hose Blk
13	125593X	Gasket 1 313 Id Tin Plated	34	124028X	Bushing Snap Nyl Blk Fuel Line
14	13280324	Nipple Pipe 3/8 Npt X 3"	35	17490412	Screw Hexwsh Thdrol 1/4-20x3/4
15	13200300	Elbow Std 90 Degree 3/8-18 Npt	36	19091416	Washer 9/32 X 7/8 X 16ga
16	STD551237	Washer	37	101335K	Line Fuel 9 50"
17	17490620	Screw Thdrol 3/8-16x1-1/4 Tytt	38	- - -	Plug Oil Drain (Order From Engine Manufacturer)
18	105736X	Shield Pnt Heat			
19	105839X	Receptacle 1/4 Turn Dacrotized			
20	105838X	Retainer 1/4 Turn 365odx 222id			

NOTE: All component dimensions given in U.S. inches
1 inch = 25.4 mm

REPAIR PARTS

12.5 HP 42" RIDING LAWN TRACTOR - - MODEL NUMBER 917.255581

42" MOWER DECK



REPAIR PARTS

12.5 HP 42" RIDING LAWN TRACTOR - - MODEL NUMBER 917.255581

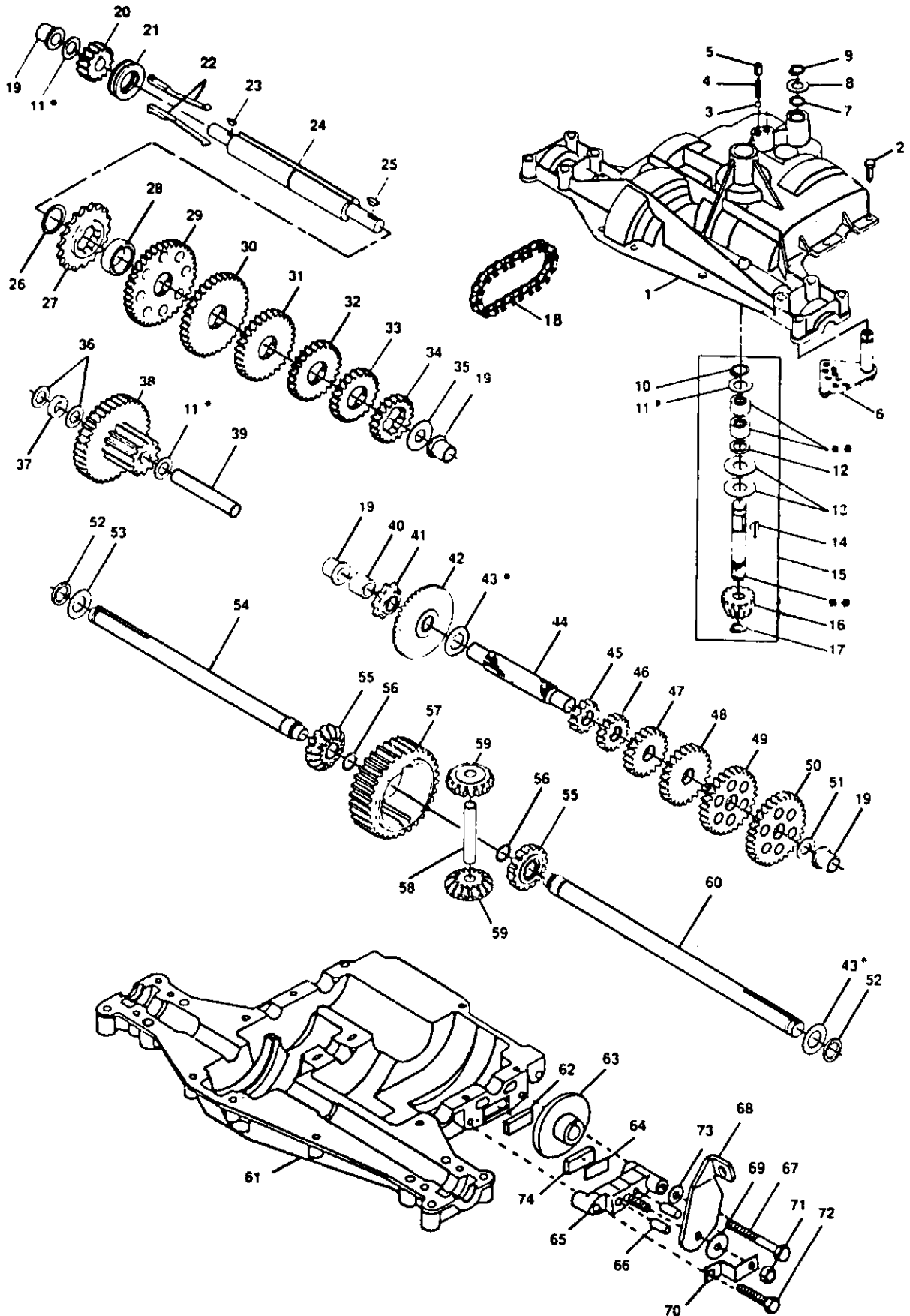
42" MOWER DECK

KEY PART NO. NO.	DESCRIPTION	KEY PART NO. NO.	DESCRIPTION
1	130970	48	131340 Bolt Shldr 10-24 Zinc Gr 5 42"
2	130969	49	133940 Roller Asm Cam Follower 42"dec
3	110485X	50	STD541410 Nut
4	128774	51	105529X Bolt Shoulder 5/16-18 Unc Blkz
5	133172	52	131845 Arm Asm Brake Pad
		53	133944 Washer Hardened Smaller
6	129895	54	131335 Spring Extension
7	134149	55	133551 Rod Pivot W/nibs
8	129962	56	STD560907 Cotter Pin
9	STD551137	57	133504 Rod Clutch Secondary W/nibs
10	850857	58	134236 Guard Mandrel Lh 42"
11	128961	59	133550 Rod Clutch Primary W/nibs
12	130968	60	STD541237 Nut
13	131491	61	133205 Trunnion Adj 3/8-16 Unc x 1 30
14	131267	62	STD624003 Retainer
15	110452X	63	17720410 Screw Hex Thd Cut 1/4-20x5/8 T
16	123713X	64	127498 Bushing 747 Od x 794 Lg Brass
17	19111016	65	131870 Spring Return
18	105304X	66	127847 Arm Clutch Secondary
19	STD541431	67	128903 Bolt Shoulder 3/8-16 Unc 1 44
20	STD533106	68	12000029 Ring Klip #t5304-75
21	STD624008	69	121748X Washer 25/32 x 1 5/8 X 16ga
22	127218	70	127845 Keeper Spring 4 000
23	73350800	71	106932X Knob Rd 3/8-16 Plstc Thds Blk
24	130171	72	133573 Arm Asm Clutch Primary
25	73800800	73	128759 Spring Clutch Mower 2 750 Zinc
26	135388	74	STD581062 E Ring
27	135563	75	19211416 Washer 21/32 x 7/8 x 16ga
28	130832	76	122507X Shaft Asm Pnt Lft W/wo/inf Hgt
29	134619	77	105767X Pin Groove 1 500 Zinc
33	133844	78	120183X Bearing Nylon Blk 629 Id
34	78158	79	122514X Rod Asm Lever 9 219 Bend Stake
35	129963	80	122512X Spring Cprsn 3 750 Oiled
36	129861	81	122364X Plunger Lever Lift
37	73050900	82	122365X Button Plunger Red
38	STD533717	83	125631X Grip Handle Fluted Blk
39	133943	84	134753 Bracket Stiffener
40	131494	85	134079 Cover 42" mulcher
41	122052X	86	71161010 Screw
42	19131612	87	10071000 Washer Lock #10
43	133502	88	19061216 Washer #10
44	133503	89	2029J Nut Weld
45	STD541437	90	130758 Latch Assembly
46	72110618	—	133171 Deck Assembly Complete
47	133835	—	130794 Mandrel Asm (Includes Key #'s 5-8,10-12,39 And 41)

NOTE: All component dimensions given in U.S. inches
1 inch = 25.4 mm

REPAIR PARTS

12.5 HP 42" RIDING LAWN TRACTOR - - MODEL NUMBER 917.255581
FOOTE/DANA TRANSAXLE - MODEL NUMBER 4360-7



REPAIR PARTS

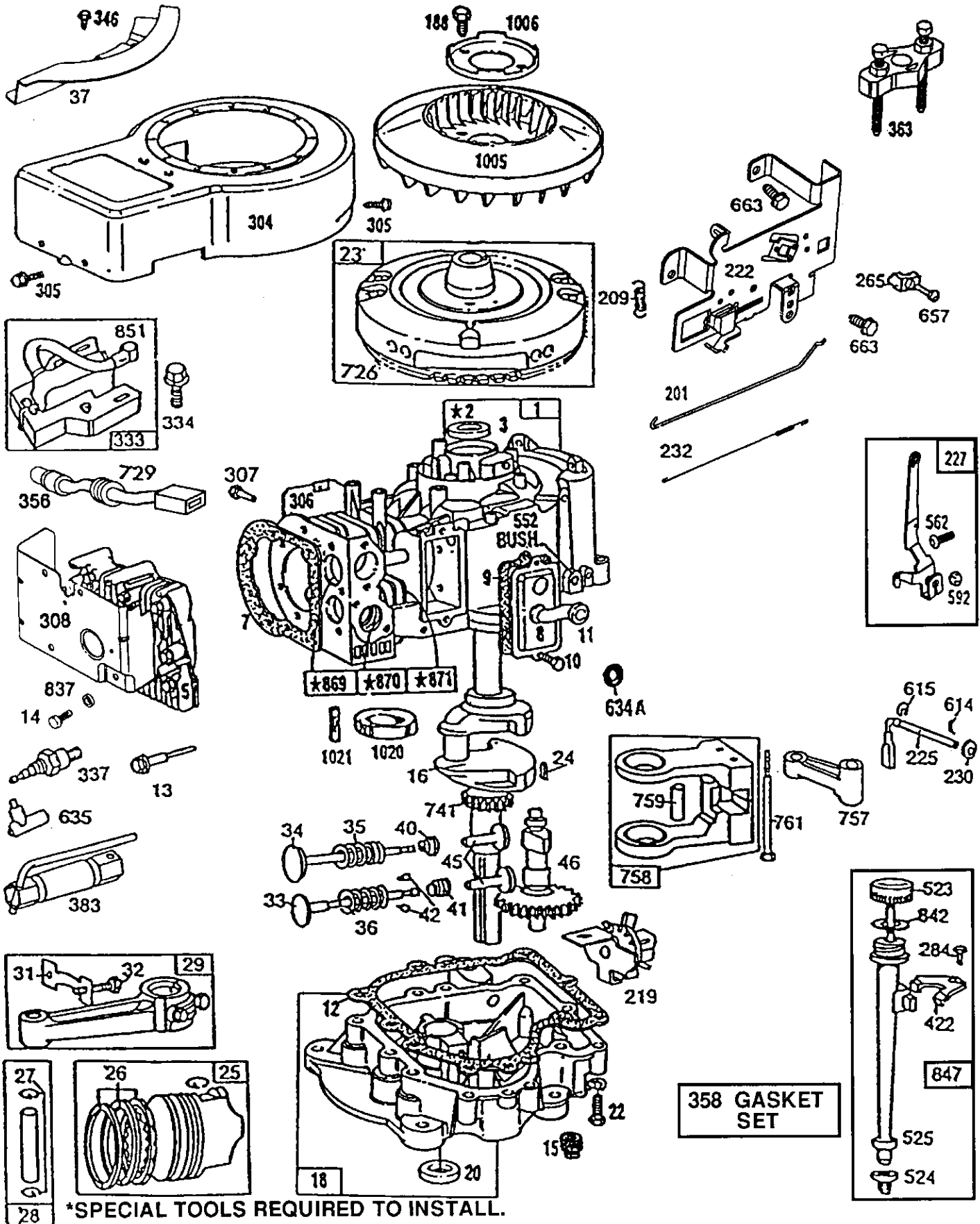
12.5 HP 42" RIDING LAWN TRACTOR - - MODEL NUMBER 917.255581
FOOTE/DANA TRANSAXLE - MODEL NUMBER4360-7

KEY PART NO.	NO.	DESCRIPTION	KEY PART NO.	NO.	DESCRIPTION
1	120458X	Housing, Upper	41	105928X	Sprocket, 9 Teeth
2	2274J	Screw, Tapping, Large 1/4-20 x .734	42	110084X	Gear, Bevel, 42 Teeth
3	68003	Ball, Detent	43	108983X	*Washer, Plain .758 x 1.12 x .010
4	105904X	Spring, Detent		105930X	*Washer, Plain .758 x 1.12 x .015
5	105905X	Screw, Set		105931X	*Washer, Plain .758 x 1.12 x .020
6	120460X	Shifter Assembly		105932X	*Washer, Plain .758 x 1.12 x .025
7	120461X	O-Ring		3417J	*Washer, Plain .758 x 1.25 x .020
8	120462X	*Washer, Plain .505 x .942 x .006		106097X	*Washer, Plain .758 x 1.25 x .025
	120463X	*Washer, Plain .505 x .942 x .010		2264J	*Washer, Plain .758 x 1.25 x .031
	120464X	*Washer, Plain .505 x .942 x .015		106098X	*Washer, Plain .758 x 1.25 x .035
	120465X	*Washer, Plain .505 x .942 x .020		2265J	*Washer, Plain .758 x 1.25 x .040
	120466X	*Washer, Plain .505 x .942 x .026		106586X	*Washer, Plain .758 x 1.25 x .045
	83818	*Washer, Plain .505 x .942 x .030		106587X	*Washer, Plain .758 x 1.25 x .050
	120467X	*Washer, Plain .505 x .942 x .040		106588X	*Washer, Plain .758 x 1.25 x .055
9	2286J	Ring, Retaining		2263J	*Washer, Plain .758 x 1.25 x .062
10	2267J	Ring, Retaining	44	120473X	Shaft, Drive
11	3413J	*Washer, Plain .632 x 1.00 x .010	45	105933X	Gear, Spur, 12 Teeth
	2233J	*Washer, Plain .632 x 1.00 x .020	46	106151X	Gear, Spur, 15 Teeth
	2232J	*Washer, Plain .632 x 1.00 x .026	47	120407X	Gear, Spur, 20 Teeth
	2231J	*Washer, Plain .632 x 1.00 x .031	48	106589X	Gear, Spur, 25 Teeth
	2230J	*Washer, Plain .632 x 1.00 x .036	49	120408X	Gear, Spur, 28 Teeth
	2229J	*Washer, Plain .632 x 1.00 x .041	50	105937X	Gear, Spur, 31 Teeth
	2228J	*Washer, Plain .632 x 1.00 x .046	51	2226J	Washer, Plain .632 x 1.00 x .060
	2227J	*Washer, Plain .632 x 1.00 x .050	52	2272J	Seal, Felt
	2226J	*Washer, Plain .632 x 1.00 x .060	53	2263J	Washer, Plain .758 x 1.25 x .062
	105906X	*Washer, Plain .632 x 1.00 x .082	54	120474X	Axle, Left Hand
12	6725J	O-Ring	55	110081X	Gear, Miter, 15 Teeth
13	120415X	Washer, Plain .632 x 1.38 x .046	56	105941X	Ring, Retaining
14	2257J	Key, Woodruff #9	57	110071X	Gear, Spur, 32 Teeth
15	110077X	Assembly, Kit, Input Shaft	58	120952X	Shaft, Cross
16	110078X	Pinion, Bevel, 14 Teeth	59	110082X	Gear, Miter, 15 Teeth
17	105909X	Ring, Retaining	60	120475X	Axle, Right Hand
18	105910X	Chain, 24 Pitches	61	120476X	Housing, Lower
19	105911X	Bearing, Flange	62	120961X	Puck, Friction
20	108976X	Gear, Spur, 14 Teeth	63	7294J	Disc, Brake
21	105913X	Collar, Clutch	64	108989X	Spacer
22	120468X	Key, Clutch	65	120953X	Jaw, Brake
23	2242J	Key, Woodruff	66	120954X	Pin, Dowel
24	120469X	Shaft, Intermediate	67	120955X	Screw, Tapping, Large 5/16-18 x 2.25
25	2244J	Key, Woodruff #61	68	108992X	Lever, Actuating
26	105916X	Ring, Retaining	69	108996X	Washer, Plain .321 x 1.00 x .055
27	120470X	Sprocket, 18 Teeth	70	120956X	Bracket, Anti-Rotation
28	110070X	Spacer	71	73810500	Locknut 5/16-24
29	108977X	Gear, Spur, 37 Teeth	72	106596X	Screw, Tapping, Large 5/16-18 x 1.44
30	109254X	Gear, Spur, 35 Teeth	73	120993X	Washer, Plain .343 x .81 x .059
31	120405X	Gear, Spur, 30 Teeth	74	120951X	Puck, Friction
32	108980X	Gear, Spur, 25 Teeth	75	120416X	Grease
33	120406X	Gear, Spur, 22 Teeth			
34	108455X	Gear, Spur, 19 Teeth			
35	105925X	Washer, Plain .640 x 1.37 x .061			
36	2232J	Washer, Plain .632 x 1.00 x .026			
37	108978X	Spacer .630 x 1.00 x .169			
38	110079X	Assembly, Gear, Combination of 12 Teeth and 35 Teeth			
39	120471X	Shaft, Idler			
40	120472X	Spacer .635 x .875 x .755			
					* Use In Various Combinations To Maintain Proper Clearances.
					** Order Key Number 15

NOTE: All component dimensions given in U.S. inches
1 inch = 25.4 mm

REPAIR PARTS

12.5 HP 42" RIDING LAWN TRACTOR - - MODEL NUMBER 917.255581
 BRIGGS & STRATTON ENGINE - MODEL NUMBER 286707, TYPE NUMBER 0437-01



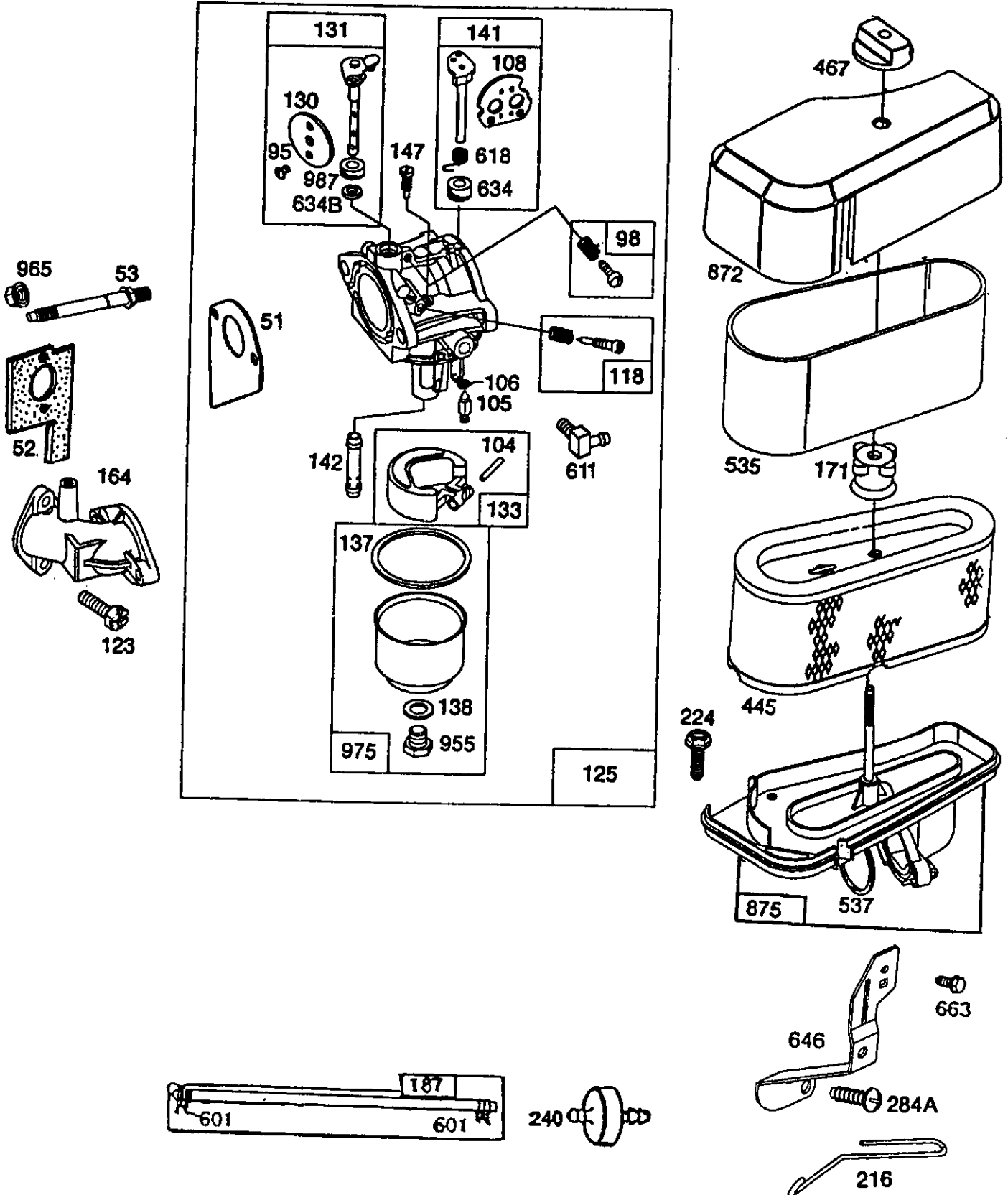
*SPECIAL TOOLS REQUIRED TO INSTALL.

358 GASKET SET

REPAIR PARTS

12.5 HP 42" RIDING LAWN TRACTOR - - MODEL NUMBER 917.255581
BRIGGS & STRATTON ENGINE - MODEL NUMBER 286707, TYPE NUMBER 0437-01

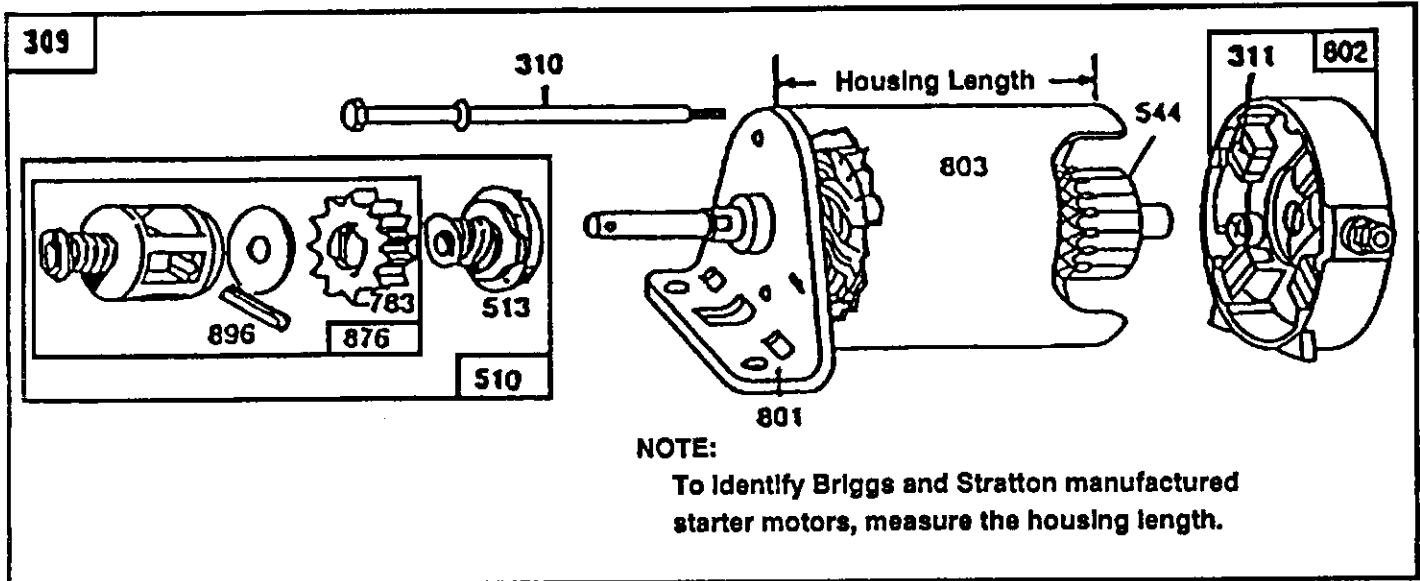
121 CARBURETOR OVERHAUL KIT



REPAIR PARTS

12.5 HP 42" RIDING LAWN TRACTOR - - MODEL NUMBER 917.255581

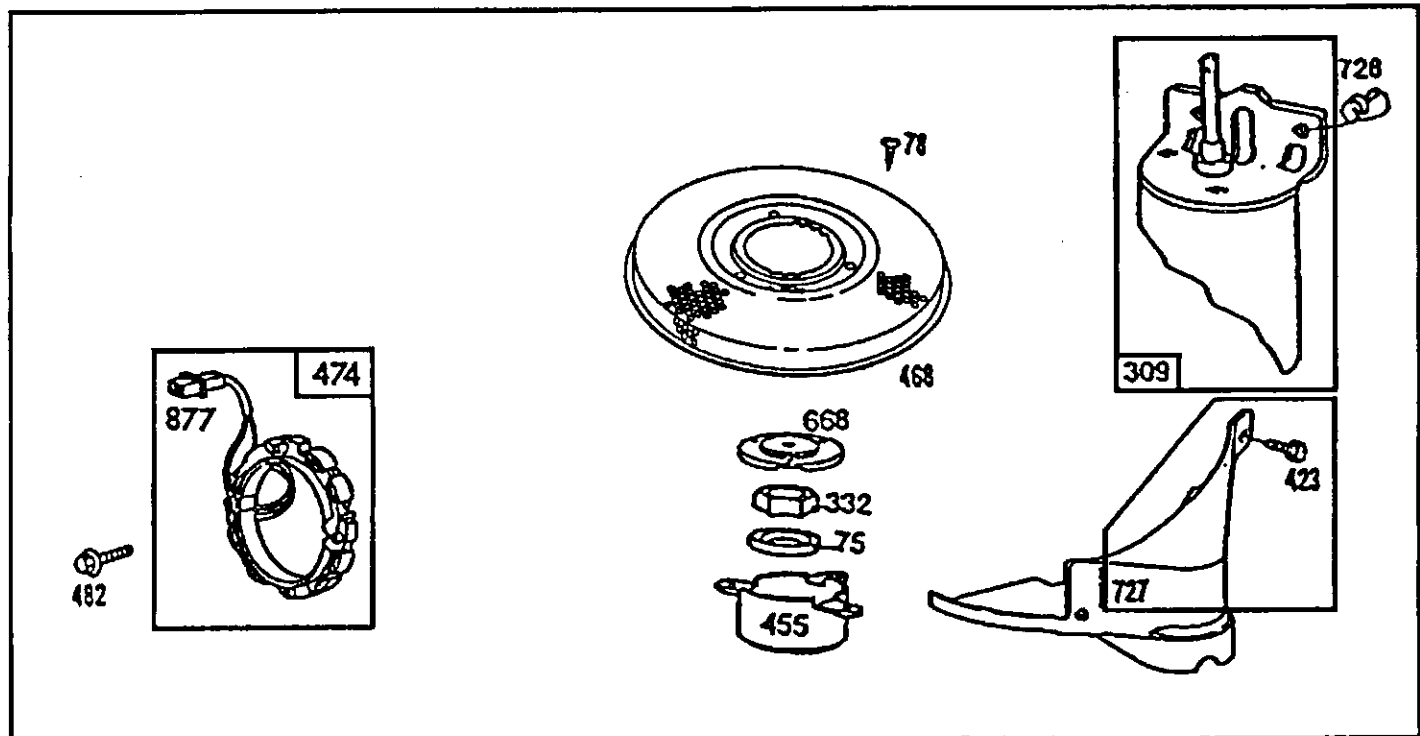
BRIGGS & STRATTON ENGINE - MODEL NUMBER 286707, TYPE NUMBER 0437-01



KEY NUMBER		309	310	311	510	544	801	802	803
MANUFACTURER		Motor and Drive Assy.	Thru Bolt Assembly	Brush Assembly	Drive Assembly	Armature Assembly	Drive End Cap Assembly	End Cap Assy. Commutator	Housing Assembly
Briggs & Stratton	Housing Length								
12V	3-21/32"	494325	94003	395538	490421**	390837	394856	395537*	398159

*Includes Brush Set

- **Includes
- #398003 Clutch Assembly (Key Number 513)
 - #280104 Gear (Key Number 783)
 - #490467 Retainer and Pin (Key Number 876)
 - #94288 Roll Pin (Key Number 896)



REPAIR PARTS

12.5 HP 42" RIDING LAWN TRACTOR - - MODEL NUMBER 917.255581

BRIGGS & STRATTON ENGINE - MODEL NUMBER 286707, TYPE NUMBER 0437-01

KEY PART NO.	NO.	DESCRIPTION	KEY PART NO.	NO.	DESCRIPTION
1	490450	Cylinder Assembly	78	93805	Screw, Sems
2	261623	Bearing, Cylinder (Requires Special Tools For Installation)	95	94098	** Screw, Throttle
3	391086	* Seal, Oil	98	494382	Screw, Idle Speed
5	494240	Head, Cylinder	104	231789	** Pin, Float Hinge
7	271866	* Gasket, Cylinder Head	105	231790	** Valve Assembly, Inlet Needle
8	391406	Breather Assembly	106	281169	Inlet Valve Seat
9	27803	Gasket, Valve Cover	108	224540	Valve, Choke
10	94621	Screw, Sems	118	494383	** Valve, Needle
11	280100	Tube, Breather	121	494384	Carburetor Overhaul Kit (Includes Items marked ** and ***)
12	271916	* Gasket, Crankcase Cover 1/64"	123	94616	Screw, Elbow Mounting
	271997	* Gasket, Crankcase Cover .005"	125	494392	Carburetor Assembly (Choke-A-Matic)
	271996	* Gasket, Crankcase Cover .009"	130	224539	Valve, Throttle
13	94622	Screw, Cylinder Head 3"	131	494379	Shaft and Lever, Throttle
14	93415	Screw, Cylinder Head 3/4"	133	494381	Float, Carburetor
15	94239	Plug, Oil Drain	137	281165	*** Gasket, Float Bowl
16	490466	Crankshaft	138	281164	*** Washer, Float Bowl Screw
	94196	Key, Timing Gear	141	494380	** Shaft and Lever, Choke
18	494238	Base, Engine	142	231793	** Nozzle/Jet, Carburetor
20	291675	* Seal, Oil		494499	High Altitude Kit:
22	94624	Screw, Sems, Base Mounting	147	231794	231796 Pilot Jet, High Altitude
23	492326	Flywheel and Ring Gear Assembly, Magneto	164	213811	281164 Seal, Bowl Screw
24	222698	Key, Flywheel	171	281051	** Pilot, Jet
25	394661	Piston Assembly, Standard	187	393815	Carburetor, Elbow
	394662	Piston Assembly .010" Oversize	188	93535	Nut, Air Cleaner Mounting
	394663	Piston Assembly .020" Oversize	201	262767	Line, Fuel, 11" (Cut To Suit)
	394664	Piston Assembly .030" Oversize	209	260871	Screw, Sems 3/4"
26	391780	Ring Set, Piston, Standard	216	262766	Link, Governor
	392331	Ring Set, Piston, Chrome, Standard	219	490815	Spring, Governor
	391781	Ring Set, Piston .010" Oversize	222	494887	Link, Choke
	391782	Ring Set, Piston .020" Oversize	224	94513	Oil Slinger, Governor Gear and Bracket Assembly
	391783	Ring Set, Piston .030" Oversize	225	231058	Plate, Governor Control (Choke-A-Matic)
27	260924	Lock, Piston Pin	227	493935	Screw, Sem, Air Cleaner
28	299691	Pin Assembly, Piston, Standard	230	222450	Crank, Governor, 1/4" Diameter
	391286	Pin Assembly, Piston .005" Over	232	262785	Lever Assembly, Governor
29	490348	Rod Assembly, Connecting	240	394358	Washer, Governor Crank, 1/4" I.D.
	490469	Rod Assembly, Connecting .020" Undersize Crankpin Bore	244	94419	Spring, Governor Link
31	222299	Lock, Connecting Rod Screw	265	221535	Filter, Fuel
32	92909	Screw, Connecting Rod	284	94419	Clamp, Casing
33	262246	Valve, Exhaust	284A	94326	Screw, Clamp Mounting
34	262247	Valve, Intake	304	224504	Screw, Air Cleaner
35	65906	Spring, Intake Valve	305	94619	Housing, Blower, Red
36	26828	Spring, Exhaust Valve	306	224545	Screw, Sems, Blower Housing
37	223752	Guard, Flywheel	307	94623	Mounting
40	221596	Retainer, Intake Valve	308	491490	Shield, Cylinder
41	292260	Rotocoil, Exhaust Valve			Screw, Sems, Cylinder Shield Mtg.
42	93630	Retainer, Exhaust Valve Rotocoil			Cover, Cylinder Head
45	262248	Tappet-Valve			
46	212897	Gear, Cam			
51	281170	*** Gasket, Carburetor (Carburetor to Elbow)			
52	270872	* Gasket, Carburetor (Elbow to Cylinder)			
53	94637	Stud, Carburetor Mounting			
75	224061	Washer, Spring			

* Included in Gasket Set (494241)
 ** Included in Carburetor Overhaul Kit (494384)
 *** Included in both Carburetor Overhaul Kit (494384) and Carburetor Gasket Set (494386)

NOTE: All component dimensions given in U.S. inches
 1 inch = 25.4 mm

REPAIR PARTS

12.5 HP 42" RIDING LAWN TRACTOR - - MODEL NUMBER 917.255581

BRIGGS & STRATTON ENGINE - MODEL NUMBER 286707, TYPE NUMBER 0437-01

KEY PART NO.	NO.	DESCRIPTION	KEY PART NO.	NO.	DESCRIPTION
309	---	Motor, Starting, 12 Volt (see chart on illustrated pages for replacement parts for Starting Motors)	663	94620	Screw, Hex Head
			668	280848	Spacer
			726	392134	Gear, Ring (Includes Mounting Parts)
332	92284	Nut, Hex	727	490324	Cover, Starter (Includes Mounting Screws)
333	492341	Armature, Magneto	728	93535	Screw, Sems
334	93381	Screw, Sems, Armature Mounting	729	281159	Clip, Lead Wire
337	802592	Plug, Spark, (1-7/8" or 47 mm) (Resistor Type)	741	262135	Gear, Timing
346	93705	Screw, Hex Head	757	212359	Link, Counterweight
356	494328	Wire, Ground	758	399891	Counterweight Assembly
358	494241	Gasket Set (Includes all items marked *)	759	298909	Pin, Counterweight
363	19203	Puller, Flywheel	761	93875	Screw, Counterweight
383	89838	Wrench, Spark Plug	837	231109	Spacer, Muffler Mounting
422	223721	Clamp, Oil Filler Tube	842	270920	Seal, Oil Filler Cap
423	93984	Screw, Sems	847	490474	Fill Group, Oil
445	493909	Cartridge, Air Cleaner	851	221798	Terminal, Ignition Cable
455	222561	Cup, Screen Mounting	869	261463	Seat, Intake Valve, Standard
467	493903	Knob, Air Cleaner	870	210940	Seat, Exhaust Valve, Standard
468	222562	Screen, Flush Rotating	871	261961	Guide, Exhaust Valve
474	393474	Stator, Alternator, Dual Circuit	872	281104	Cover, Air Cleaner
482	93621	Screw, Sems	875	494237	Body, Air Cleaner
523	490327	Cap and Dipstick, Oil Filler	877	393456	Diode and Connector Assembly, Dual Circuit
524	68838	Seal, Filler Tube	955	94642	** Screw, Fuel Bowl
525	280741	Tube, Oil Filler	965	94108	Locknut, Air Cleaner Mounting
535	272403	Element, Air Cleaner	975	494378	Bowl Assembly, Carburetor
537	281106	* O-Ring, Air Cleaner	977	494386	Carburetor Gasket Kit (Includes items marked ***)
552	231597	Bushing, Governor Crank, 1/4" I.D.	987	281166	** Seal, Throttle Shaft
562	92613	Bolt, Governor Lever	1005	280687	Fan, Flywheel
592	231082	Nut, Hex #10-24	1006	223726	Retainer, Fan
601	93053	Clamp, Fuel Pipe	1020	262243	Eccentric
611	494451	Fuel Inlet Tube	1021	94160	Pin, Eccentric
614	93306	Cotter, Hair Pin			
615	93307	Retainer, E-Ring			
618	262803	Spring, Choke Return			
634	281168	** Seal, Choke Shaft			
634A	491323	* Seal, Governor			
634B	281167	Washer, Throttle Shaft			
635	66538	Elbow, Spark Plug			
646	224486	Brace, Air Cleaner			
657	93496	Screw, Sems			

* Included in Gasket Set (494241)
 ** Included in Carburetor Overhaul Kit (494384)
 *** Included in both Carburetor Overhaul Kit (494384) and Carburetor Gasket Set (494386)

NOTE: All component dimensions given in U.S. inches
 1 inch = 25.4 mm