

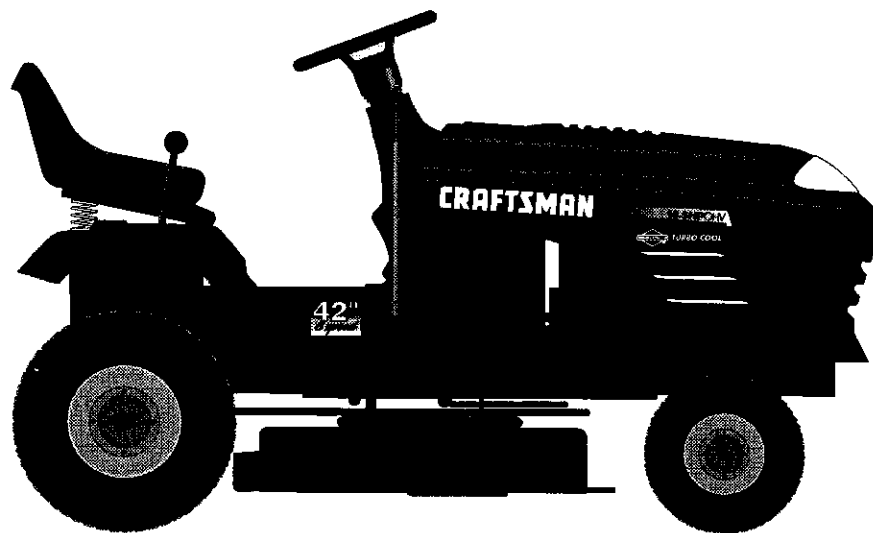
**SEARS**

# CRAFTSMAN<sup>®</sup>

MODEL NUMBER 917.256421 OWNER'S MANUAL

- Assembly
- Operation
- Customer Responsibilities
- Service and Adjustments
- Repair Parts

**EZ<sup>3</sup>**



This product has a low emission engine which operates differently from previously built engines. Before you start the engine, read and understand this Owner's Manual.

**CAUTION: Read and follow all safety rules and instructions before operating this equipment.**  
FOR CONSUMER ASSISTANCE HOT LINE, CALL THIS TOLL FREE NUMBER: 1-800-659-5917

Sears, Roebuck and Co., Hoffman Estates, IL 60179 U.S.A.



# SAFETY RULES



## Safe Operation Practices for Ride-On Mowers

**IMPORTANT:** THIS CUTTING MACHINE IS CAPABLE OF AMPUTATING HANDS AND FEET AND THROWING OBJECTS. FAILURE TO OBSERVE THE FOLLOWING SAFETY INSTRUCTIONS COULD RESULT IN SERIOUS INJURY OR DEATH.

### I. GENERAL OPERATION

- Read, understand, and follow all instructions in the manual and on the machine before starting.
- Only allow responsible adults, who are familiar with the instructions, to operate the machine.
- Clear the area of objects such as rocks, toys, wire, etc., which could be picked up and thrown by the blade.
- Be sure the area is clear of other people before mowing. Stop machine if anyone enters the area.
- Never carry passengers.
- Do not mow in reverse unless absolutely necessary. Always look down and behind before and while backing.
- Be aware of the mower discharge direction and do not point it at anyone. Do not operate the mower without either the entire grass catcher or the guard in place.
- Slow down before turning.
- Never leave a running machine unattended. Always turn off blades, set parking brake, stop engine, and remove keys before dismounting.
- Turn off blades when not mowing.
- Stop engine before removing grass catcher or unclogging chute.
- Mow only in daylight or good artificial light.
- Do not operate the machine while under the influence of alcohol or drugs.
- Watch for traffic when operating near or crossing roadways.
- Use extra care when loading or unloading the machine into a trailer or truck.

### II. SLOPE OPERATION

Slopes are a major factor related to loss-of-control and tipover accidents, which can result in severe injury or death. All slopes require extra caution. If you cannot back up the slope or if you feel uneasy on it, do not mow it.

#### DO:

- Mow up and down slopes, not across.
- Remove obstacles such as rocks, tree limbs, etc.
- Watch for holes, ruts, or bumps. Uneven terrain could overturn the machine. *Tall grass can hide obstacles.*
- Use slow speed. Choose a low gear so that you will not have to stop or shift while on the slope.
- Follow the manufacturer's recommendations for wheel weights or counterweights to improve stability.
- Use extra care with grass catchers or other attachments. These can change the stability of the machine.
- Keep all movement on the slopes *slow* and *gradual*. Do not make sudden changes in speed or direction.
- Avoid starting or stopping on a slope. If tires lose traction, disengage the blades and proceed slowly *straight* down the slope.

#### DO NOT:

- *Do not* turn on slopes unless necessary, and then, turn slowly and gradually downhill, if possible.
- *Do not* mow near drop-offs, ditches, or embankments. The mower could suddenly turn over if a wheel is over the edge of a cliff or ditch, or if an edge caves in.
- *Do not* mow on wet grass. Reduced traction could cause sliding.
- *Do not* try to stabilize the machine by putting your foot on the ground.
- *Do not* use grass catcher on steep slopes.

### III. CHILDREN

Tragic accidents can occur if the operator is not alert to the presence of children. Children are often attracted to the machine and the mowing activity. *Never* assume that children will remain where you last saw them.

- Keep children out of the mowing area and under the watchful care of another responsible adult.
- Be alert and turn machine off if children enter the area.
- Before and when backing, look behind and *down* for small children.
- Never carry children. They may fall off and be seriously injured or interfere with safe machine operation.
- Never allow children to operate the machine.
- Use extra care when approaching blind corners, shrubs, trees, or other objects that may obscure vision.

### IV. SERVICE

- Use extra care in handling gasoline and other fuels. They are flammable and vapors are explosive.
  - Use only an approved container.
  - Never remove gas cap or add fuel with the engine running. Allow engine to cool before refueling. Do not smoke.
  - Never refuel the machine indoors.
  - Never store the machine or fuel container inside where there is an open flame, such as a water heater.
- Never run a machine inside a closed area.
- Keep nuts and bolts, especially blade attachment bolts, tight and keep equipment in good condition.
- Never tamper with safety devices. Check their proper operation regularly.
- Keep machine free of grass, leaves, or other debris build-up. Clean oil or fuel spillage. Allow machine to cool before storing.
- Stop and inspect the equipment if you strike an object. Repair, if necessary, before restarting.
- Never make adjustments or repairs with the engine running.
- Grass catcher components are subject to wear, damage, and deterioration, which could expose moving parts or allow objects to be thrown. Frequently check components and replace with manufacturer's recommended parts, when necessary.
- Mower blades are sharp and can cut. Wrap the blade(s) or wear gloves, and use extra caution when servicing them.
- Check brake operation frequently. Adjust and service as required.



**Look for this symbol to point out important safety precautions. It means CAUTION!!! BECOME ALERT!!! YOUR SAFETY IS INVOLVED.**



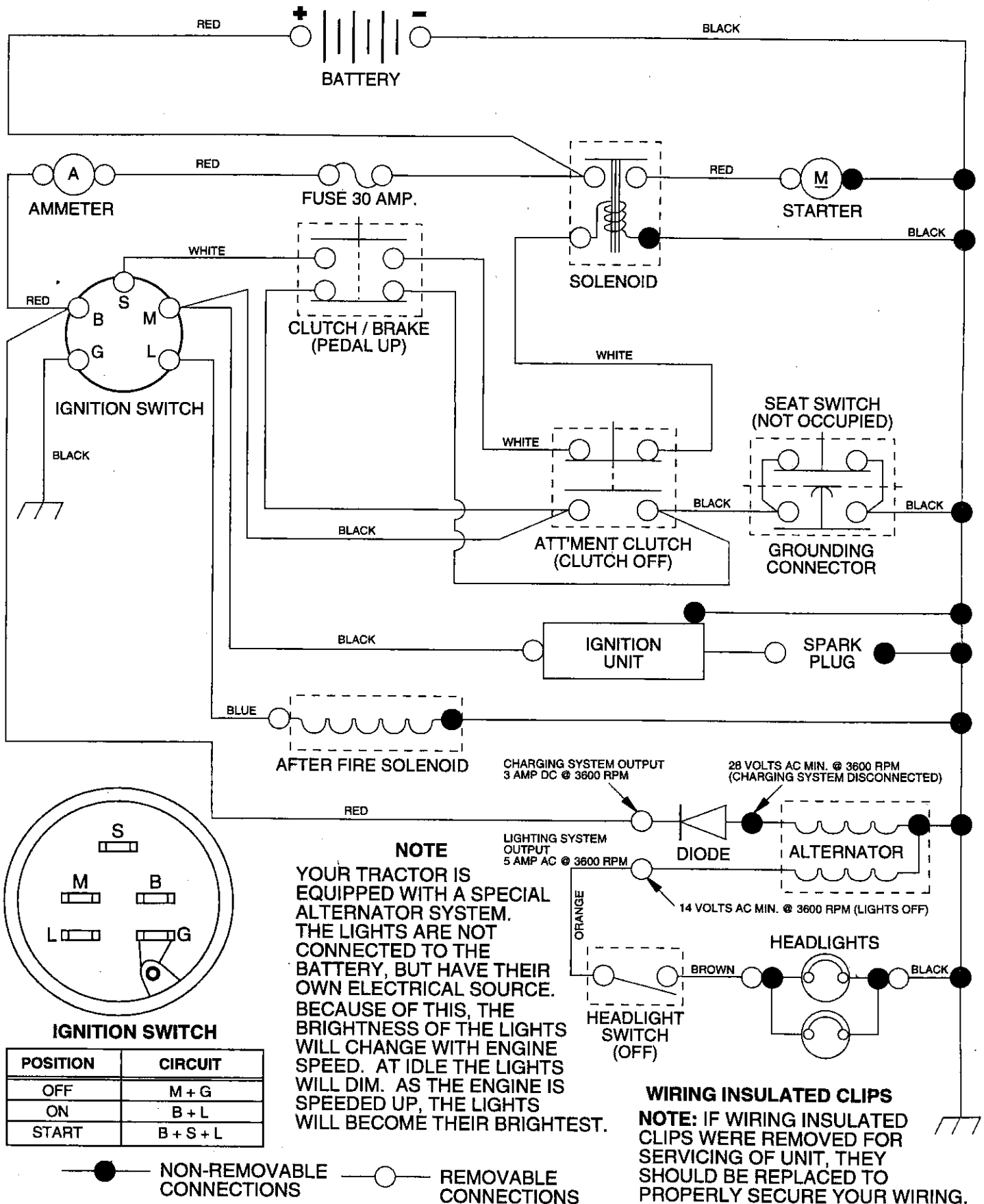
**CAUTION: Always disconnect spark plug wire and place wire where it cannot contact spark plug in order to prevent accidental starting when setting up, transporting, adjusting or making repairs.**



**The engine exhaust from this product contains chemicals known to the State of California to cause cancer, birth defects, or other reproductive harm.**

# TRACTOR - - MODEL NUMBER 917.256421

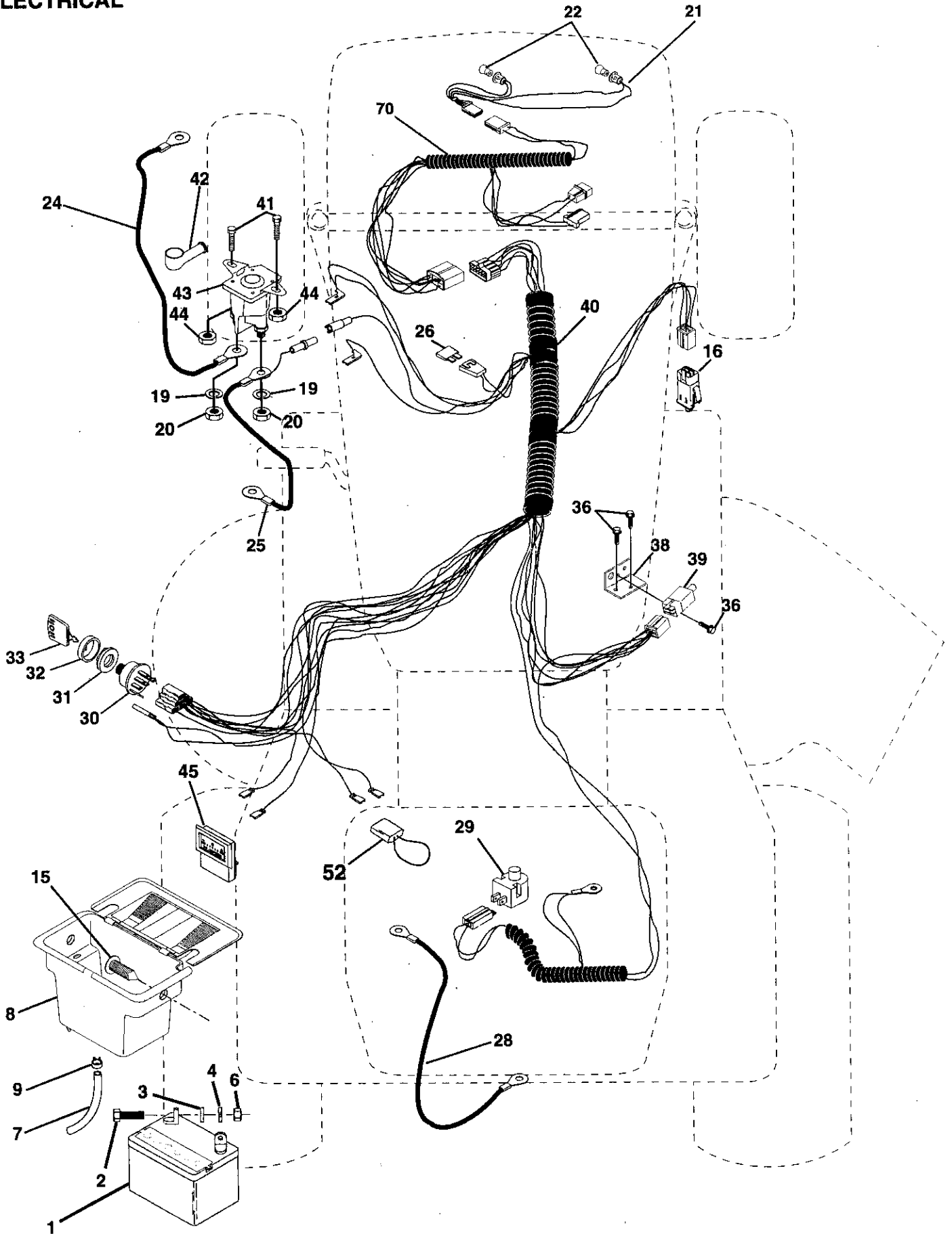
## SCHMATIC



# REPAIR PARTS

TRACTOR - - MODEL NUMBER 917.256421

## ELECTRICAL



# REPAIR PARTS

## TRACTOR - - MODEL NUMBER 917.256421

### ELECTRICAL

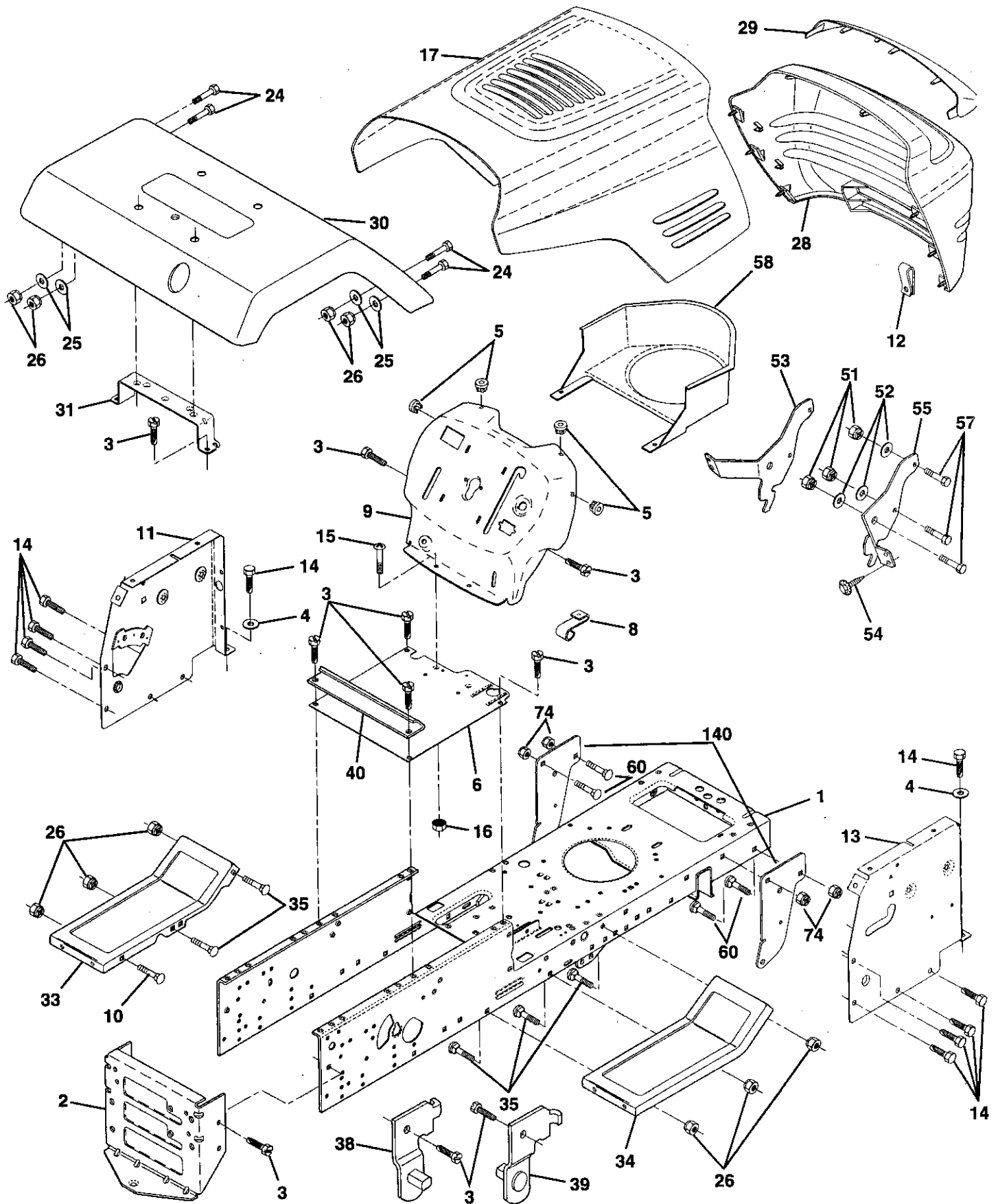
KEY NO.	PART NO.	DESCRIPTION
1	146139	Battery 12 Volt 25 Amp Wet Acme
2	74760412	Bolt, Hex Head 1/4-20 unc x 3/4
3	STD551025	Washer
4	STD551125	Washer
6	STD541025	Nut
7	109238X	Tube, Plastic, 12"
8	144940	Case, Battery W/2 Holes W/Brty
9	109596X	Clamp, Hose
15	147688	Fastener Snap-In
16	153664	Switch, Interlock Push-In
19	STD551125	Washer, Lock
20	73350400	Nut, Hex, Jam 1/4-20 UNC
21	147430	Harness, Light Socket (Includes 4152J)
22	4152J	Bulb, Light
24	4799J	Cable, Battery, 6 Gauge, Red, 11"
25	146147	Cable, Battery, 6 Gauge, Red, W/16 Wire
26	108824X	Fuse, 30 Amp
28	4207J	Cable, Ground, 6 Gauge, Black, 12"
29	121305X	Switch, Plunger
30	140301	Switch, Ignition
31	124211X	Nut, Ignition
32	141226	Cover, Key Switch
33	109310X	Key, Ignition
36	STD601005	Screw
38	140336	Bracket, Interlock Switch
39	109553X	Switch, Interlock, Clutch, 4 Terminal
40	151212	Harness, Ignition
41	71110408	Bolt, Hex Head, Fin. 1/4-20 x 1/2
42	131563	Cover, Terminal, Red
43	145673	Solenoid
44	73640400	Nut Keps Blk Hex 1/4-20 UNC
45	121433X	Ammeter Rectangular 6 Amp
52	141940	Protection Wire Loop
70	141164	Harness Engine B&S P/L 14 OHV Du HI

**NOTE:** All component dimensions given in U.S. inches  
1 inch = 25.4 mm

# REPAIR PARTS

TRACTOR -- MODEL NUMBER 917.256421

## CHASSIS AND ENCLOSURES



# REPAIR PARTS

## TRACTOR - - MODEL NUMBER 917.256421

### CHASSIS AND ENCLOSURES

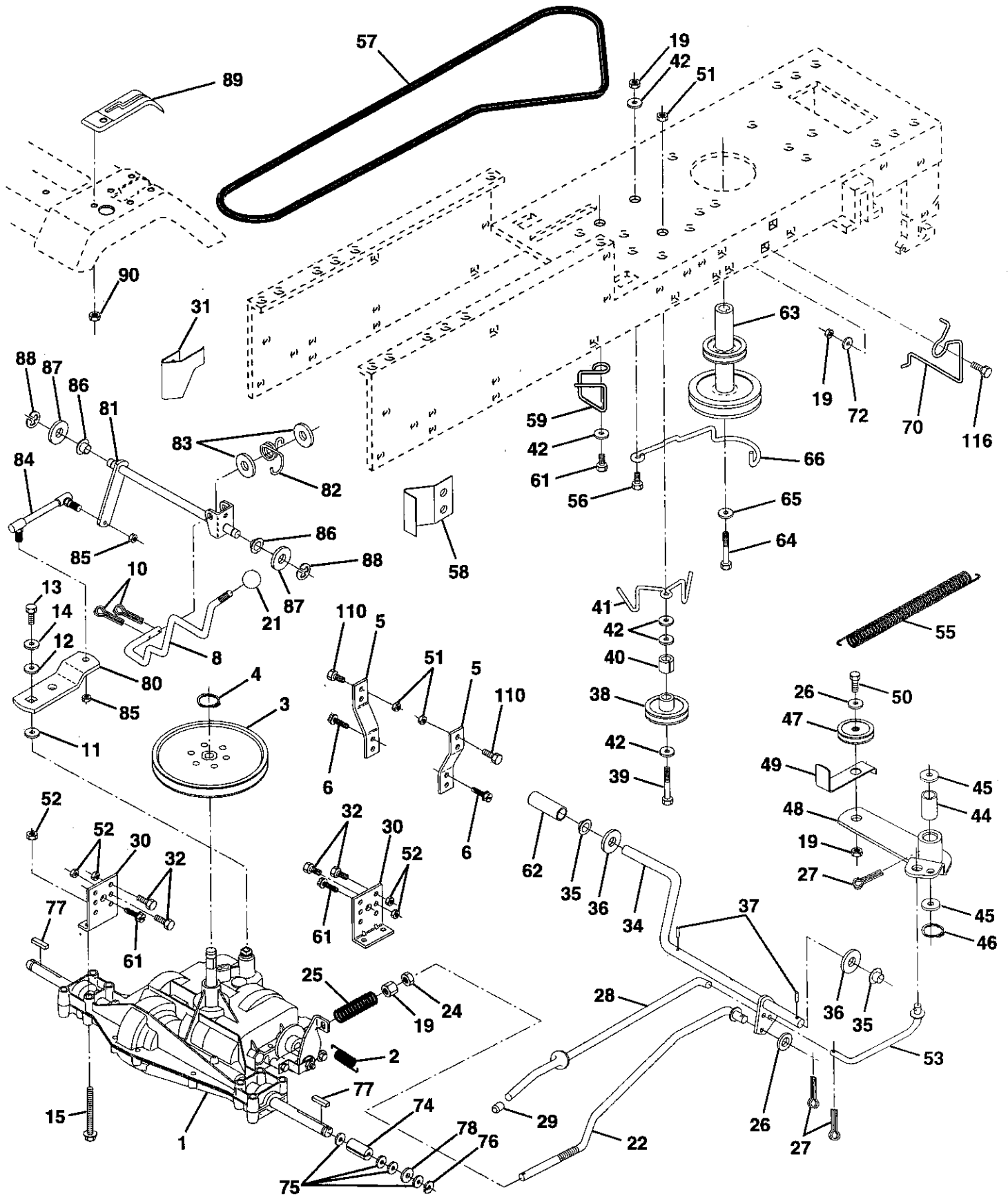
KEY NO.	PART NO.	DESCRIPTION
1	151169	Chassis Assembly
2	140356	Drawbar
3	17490612	Screw, Thd. Roll. 3/8-16 x 3/4
4	19131216	Washer 13/32 x 3/4 x 16 Gauge
5	146077	Bumper Snap-In
6	145206	Saddle
8	126471X	Clip Insulator .406 Mtg Hole
9	147633X010	Dash
10	STD533710	Bolt, Carriage 3/8-16 x 3/4
11	146956	Panel, Dash, L.H.
12	145660	Clip Tinnerman Grille P/L
13	146962	Panel, Dash, R.H.
14	17490608	Screw Thdrol 3/8-16 x 1/2
15	74180512	Screw, Machine, Truss Head 5/16-18 UNC x 3/4
16	STD541431	Nut
17	144983X574	Hood Assembly
24	STD523710	Bolt
25	19131312	Washer 13/32 x 13/16 x 12 Gauge
26	STD541437	Nut
28	145198X459	Grille w/Clips MS-459
29	145199	Lens, Grille
30	147310X574	Fender
31	139976	Bracket, Fender Support
33	145244X574	Footrest, L.H.
34	145243X574	Footrest, R.H.
35	STD533707	Bolt
38	139886	Pivot Bracket Assembly, L.H.
39	139887	Pivot Bracket Assembly, R.H.
40	139977	Spacer Fender Raised LT
51	74800400	Nut Lock w/Insert 1/4-20 UNC
52	19091416	Washer 9/32 x 7/8 x 16 Ga.
53	145201	Bracket Grille Pickoff LH
54	17030814	Screw Spiderlock Hex Hd #8-7/8
55	145202	Bracket Grille Pickoff RH
57	STD522507	Bolt, Fin Hex 1/4-20 UNC x .75
58	150127	Air Duct P/L B&S Kohl/Vang Eng
60	STD533707	Bolt Rdhd Sqnk 3/8-6 Unc x 3/4
74	STD541437	Nut Crownlock 3/8-16 Unc
140	150556	Bracket Chassis Front 7 Ga.
--	5479J	Plug, Button

**NOTE:** All component dimensions given in U.S. inches  
1 inch = 25.4 mm

# REPAIR PARTS

TRACTOR - - MODEL NUMBER 917.256421

## DRIVE





# REPAIR PARTS

## TRACTOR - - MODEL NUMBER 917.256421

### DRIVE

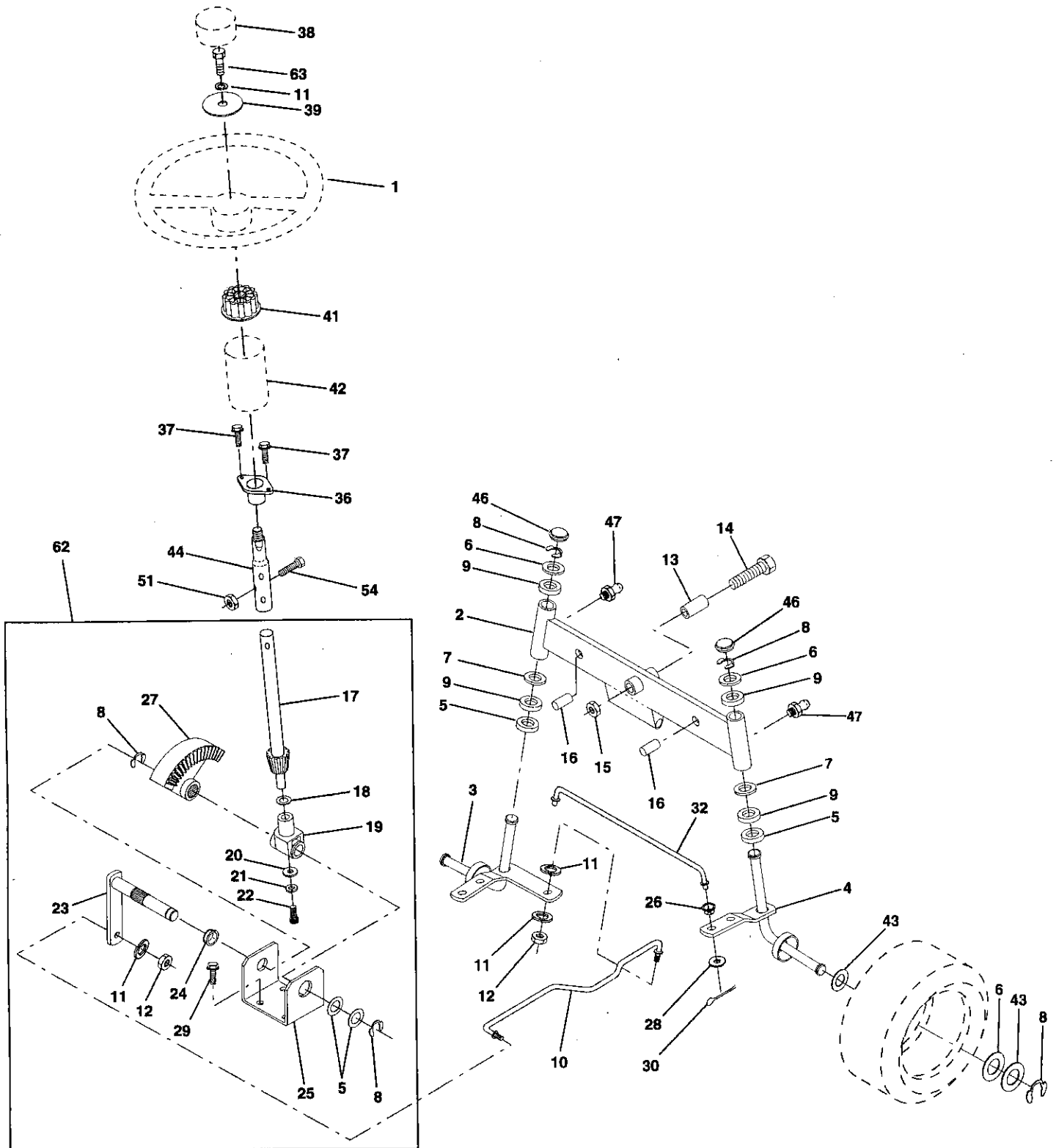
KEY NO.	PART NO.	DESCRIPTION	KEY NO.	PART NO.	DESCRIPTION
1	145607	Transaxle, Dana, Model Number 4360-97	48	123789X	Arm, Idler
2	146682	Spring, Brake Return	49	123205X	Retainer, Belt
3	123666X	Pulley, Transaxle	50	STD523715	Bolt, Hex 3/8-16 x 1-1/2
4	12000028	Ring, Retainer	51	STD541437	Nut, Crownlock 3/8-16
5	121250X	Strap, Torque	52	STD541431	Nut, Lock Hex w/Ins 5/16-18
6	17490512	Screw, Hex, Washer, Thread Rolling 5/16-18 x 3/4	53	105710X	Link, Clutch
8	141003	Rod, Shifter	55	105709X	Spring, Return, Clutch
10	STD561210	Pin, Cotter 1/8 x 1	56	STD523712	Bolt, Fin Hex 3/8-16 UNC x 1-1/4
11	105701X	Washer, Shift Plate	57	130801	V-Belt, Drive
12	19151216	Washer 15/32 x 3/4 x 16 Ga.	58	127274X	Keeper, Belt, Transaxle, R.H.
13	74550412	Bolt 1/4-28 UNF Gr. 8 w/Patch	59	140312	Retainer, Belt
14	STD551125	Washer Lock	61	17490612	Screw, Hex Washer Head, Thd., Roll. 3/8-16 x 3/4
15	74490544	Bolt, Hex Flghd 5/16-18 Gr. 5	62	8883R	Cover, Foot Pedal
19	STD541437	Locknut 3/8-16	63	140186	Pulley, Engine
21	106933X	Knob	64	71170764	Bolt, Hex 7/16-20 x 4 Gr. 5
22	130804	Rod, Brake	65	STD551143	Washer, Lock Hvy Hlcl Spr 7/16
24	STD541237	Nut, Hex Jam 3/8-16	66	153400	Keeper, Belt Engine
25	106888X	Spring, Rod, Brake	70	134683	Guide Belt Mower Drive RH
26	STD551037	Washer 13/32 x 13/16 x 16 Gauge	72	19132012	Washer 13/32 x 1-1/4 x 12 Ga.
27	STD561210	Pin, Cotter 1/8 x 3/4	74	109502X	Spacer, Split
28	145204	Rod, Brake, Park	75	121749X	Washer 25/32 x 1-1/4 x 16 Ga.
29	124236X	Cap, Plunger	76	12000001	E-Ring
30	130807	Bracket, Transaxle, L.H.	77	123583X	Key Square
31	127275X	Keeper, Belt, Transaxle, L.H.	78	121748X	Washer 25/32 x 1-5/8 x 16 Ga.
32	74760512	Bolt Hex Hd 5/16-18 UNC x 3/4	80	131487	Shift Arm
34	151128	Shaft, Foot Pedal	81	136933	Shaft, Assembly, Shifter
35	120183X	Bearing Nylon	82	123782X	Spring, Torsion
36	STD551062	Washer 21/32 x 1 x 16 Gauge	83	19171216	Washer 17/32 x 3/4 x 16 Gauge
37	1572H	Pin, Roll 3/16 x 1	84	132183	Rod, Tie
38	123674X	Idler, Flat	85	150360	Nut 1/4-28
39	STD523727	Bolt, Hex 3/8-16 x 2-3/4	86	71208	Bushing, Rod, Steering
40	4470J	Spacer	87	19212016	Washer 21/32 x 1-1/4 x 16 Gauge
41	153399	Keeper, Belt	88	12000008	Ring, Klip
42	19131312	Washer 13/32 x 13/16 x 12 Gauge	89	139964	Console, 6 Speed
44	105706X	Bearing	90	124346X	Nut, Washer Head, Self-Thread 1/4
45	110812X	Washer, Hardened	110	STD523707	Bolt Fin Hex 3/8-16 Unc x 3/4
46	12000039	Ring, Clip	116	72110610	Bolt Rdhd Sqneck 3/8-16 x 1.25
47	127783	Pulley, Idler			

**NOTE:** All component dimensions given in U.S. inches  
1 inch = 25.4 mm

# REPAIR PARTS

TRACTOR - - MODEL NUMBER 917.256421

## STEERING ASSEMBLY



# REPAIR PARTS

## TRACTOR - - MODEL NUMBER 917.256421

### STEERING ASSEMBLY

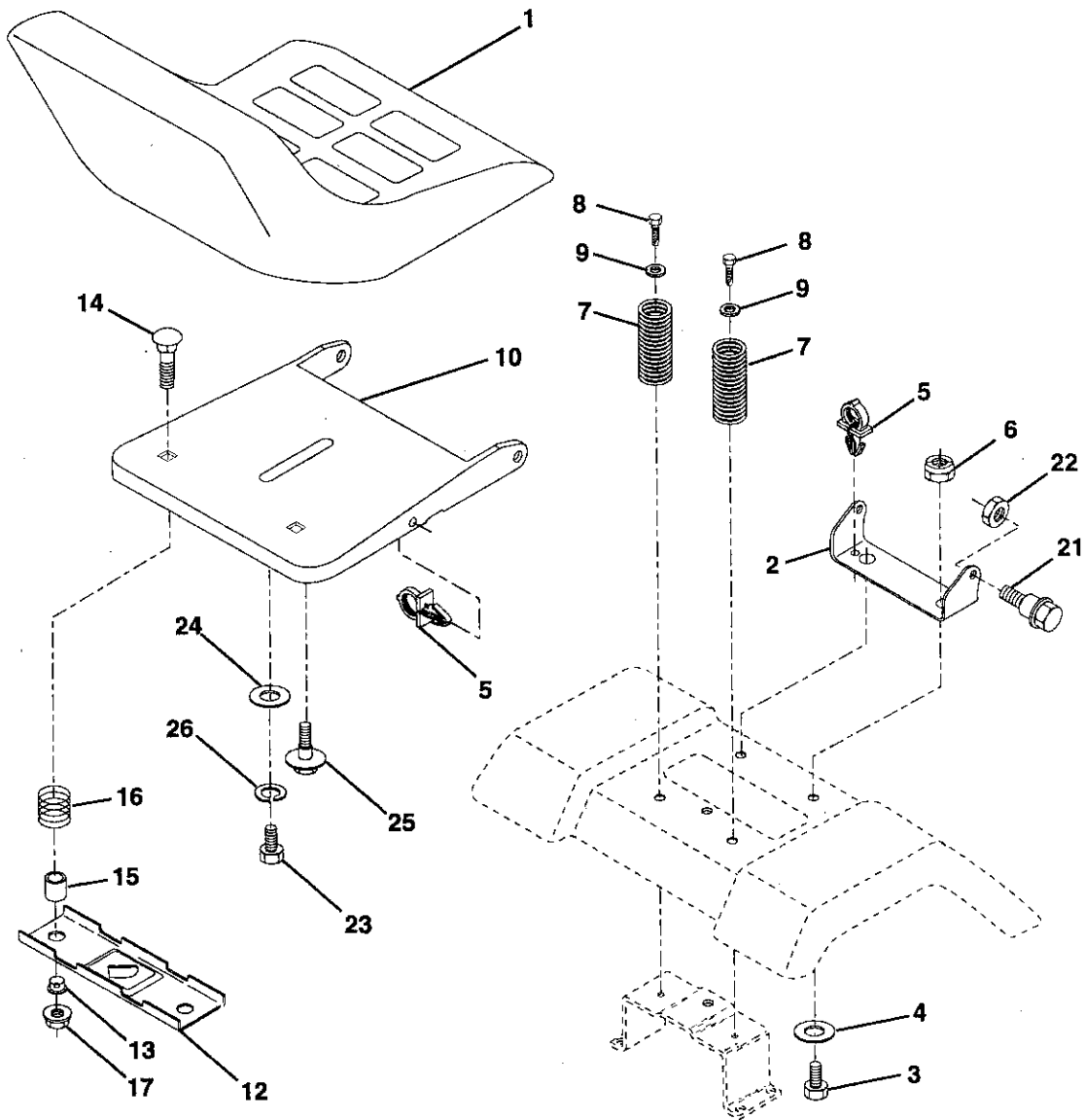
KEY NO.	PART NO.	DESCRIPTION
1	139768	Steering Wheel
2	142033	Front Axle Assembly
3	135227	Spindle Assembly, L.H.
4	135228	Spindle Assembly, R.H.
5	6266H	Bearing, Race, Thrust, Hardened
6	121748X	Washer 25/32 x 1-5/8 x 16 Gauge
7	19272016	Washer 27/32 x 1-1/4 x 16 Gauge
8	12000029	Ring, Klip
9	3366R	Bearing, Steering Column
10	130468	Link, Drag
11	STD551137	Washer, Lock
12	73610600	Nut, Hex, Fin. 3/8-24 UNF
13	110438X	Spacer, Bearing, Front Axle
14	74011056	Bolt, Hex Head 5/8-11 UNC x 3-1/2
15	73901000	Nut, Lock, Flange 5/8-11 UNC
16	132624	Pin, Axle 5/8 x 1.55/1.54
17	140716	Shaft Assembly, Steering
18	57079	Washer, Thrust .515 x .750 x .033
19	124035X	Support, Shaft
20	126684X	Washer, Shim 1/4 x 5/8 x .062
21	STD551125	Washer
22	71100410	Screw, Cap Sckt Hd Phos & Oil
23	127501	Pittman Shaft Assembly
24	109816X	Nyliner, Snap-In
25	124036X	Bracket, Steering
26	126847X	Bushing, Link, Drag
27	136874	Gear, Sector
28	19131416	Washer 13/32 x 7/8 x 16 Gauge
29	17490612	Screw, Thd., Roll. 3/8-16 x 3/4
30	STD561210	Pin
32	130465	Rod, Tie
36	132196	Bushing, Steering
37	152927	Screw TT #10-32 5 3/8 Flange
38	139769	Insert, Steering Wheel
39	19133808	Washer 13/32 x 2-3/8 x 8 Gauge
41	100711L	Adaptor, Steering Wheel
42	145054	Boot, Steering Shaft
43	121749X	Washer 25/32 x 1-1/4 x 16 Gauge
44	153720	Extension Shaft Steering
46	121232X	Cap, Spindle
47	6855M	Fitting, Grease
51	STD541431	Nut Lock Hex w/Ins. 5/16-18 UNC
54	STD523112	Bolt Fin Hex 5/16-18 UNC x 1-1/4
62	149686	Kit Steering Asm Service
63	STD523710	Bolt Fin Hex 3/8-16 Unc x 1 Gr. 5

**NOTE:** All component dimensions given in U.S. inches  
1 inch = 25.4 mm

# REPAIR PARTS

TRACTOR - - MODEL NUMBER 917.256421

## SEAT ASSEMBLY



KEY NO.	PART NO.	DESCRIPTION
1	140123	Seat
2	140551	Bracket, Pivot, Seat
3	STD523710	Bolt
4	19131610	Washer 13/32 x 1 x 10 Gauge
5	145006	Clip, Push-In Hinged
6	STD541437	Nut
7	124181X	Spring, Seat
8	17490616	Screw, Thd., Roll. 3/8-16 x 1
9	19131614	Washer 13/32 x 1 x 14 Gauge
10	140552	Pan, Seat
12	121246X	Bracket, Switch Mounting
13	121248X	Bushing, Snap
14	72050411	Bolt, Carriage 1/4-20 x 1-3/8

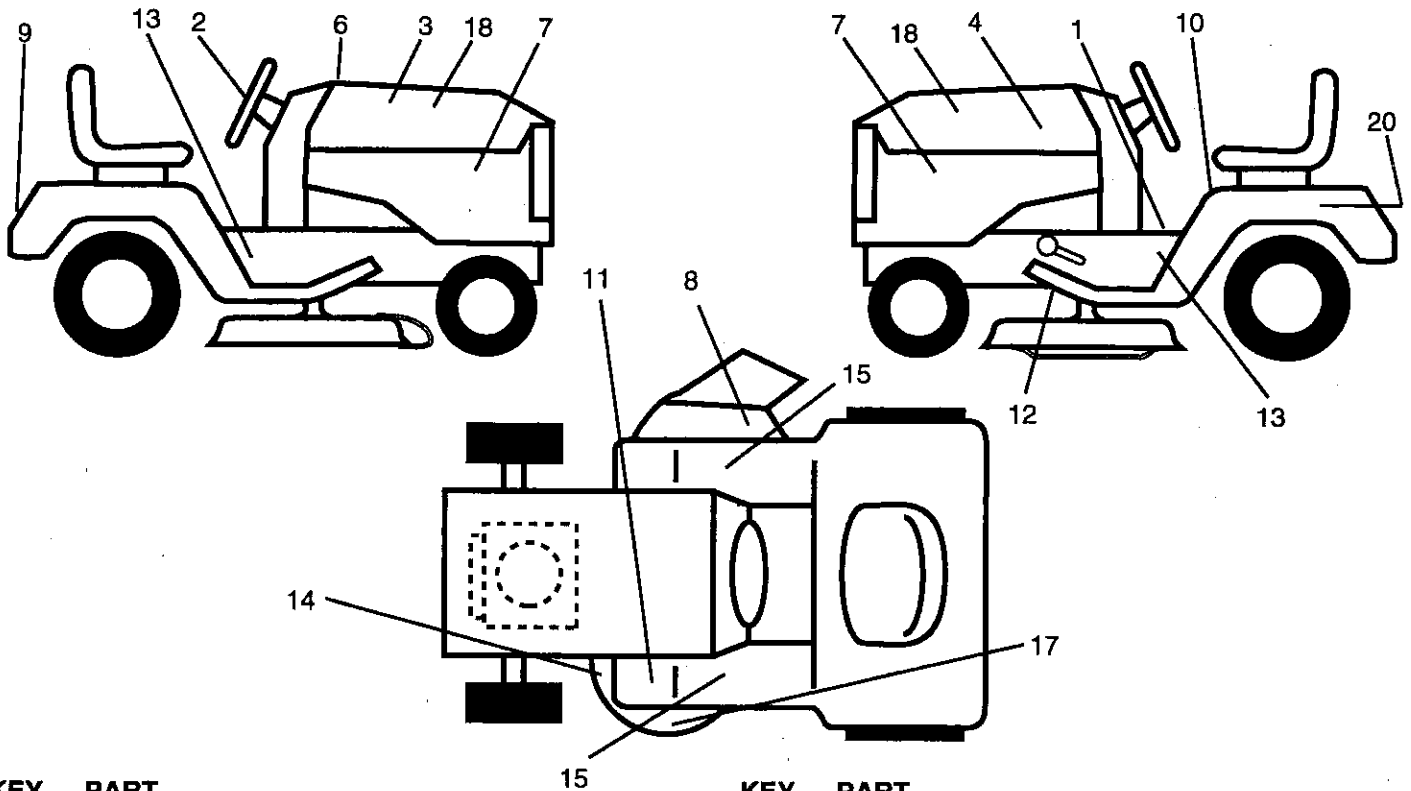
KEY NO.	PART NO.	DESCRIPTION
15	134300	Spacer, Split .28 x .88
16	121250X	Spring
17	123976X	Locknut, Flange 1/4 Grade 5
21	153236	Bolt, Shoulder 5/16-18 UNC-2A
22	STD541431	Nut
23	74780814	Bolt, Hex Head, Fin. 1/2-13 x 7/8 Grade 5
24	19171912	Washer 17/32 x 1-3/16 x 12 Gauge
25	127018X	Bolt, Shoulder 5/16-18 x .62
26	STD551150	Washer, Lock

**NOTE:** All component dimensions given in U.S. inches  
1 inch = 25.4 mm

# REPAIR PARTS

TRACTOR - - MODEL NUMBER 917.256421

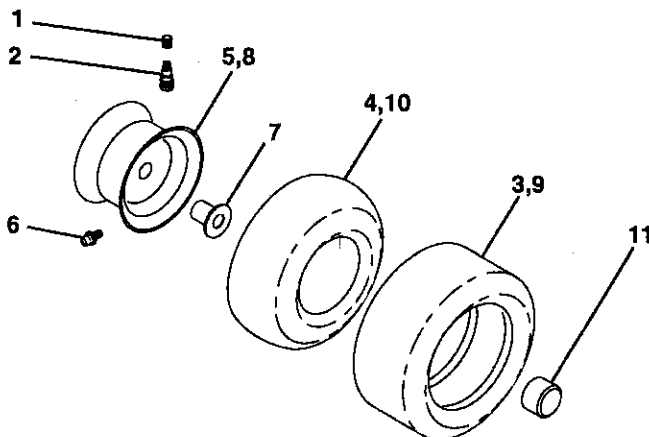
## DECALS



KEY NO.	PART NO.	DESCRIPTION
1	140819	Decal, Dash Oper. Instr. Eng P/L
2	150333	Decal, Cap Cnsmr Help Line
3	150683	Decal, Hood, R.H.
4	150684	Decal, Hood, L.H.
6	133644	Decal, Customer Maintenance
7	150927	Decal, Side Panel
8	150955	Decal, Deck Mower EZ3 Dover
9	128314	Decal, Fender, Craftsman
10	137537	Decal, Caution, English
11	4900J	Decal, Clutch/Brake, English

KEY NO.	PART NO.	DESCRIPTION
12	146046	Decal, V-Belt Drive Schematic
13	150678	Decal, Chassis, 6 Speed/42"
14	136832	Decal, V-Belt Schematic
15	145245	Pad Footrest Rbr Sq Craftsman
17	133179	Decal, Mower QC System
18	150685	Decal, Ins. Hood
20	149516	Decal Battery Dngr/Psn Eng
--	145247	Fastener Pop In Footrest
--	138311	Decal, Lift Handle
--	154112	Owner's Manual, English
--	154113	Owner's Manual, Spanish

## WHEELS & TIRES



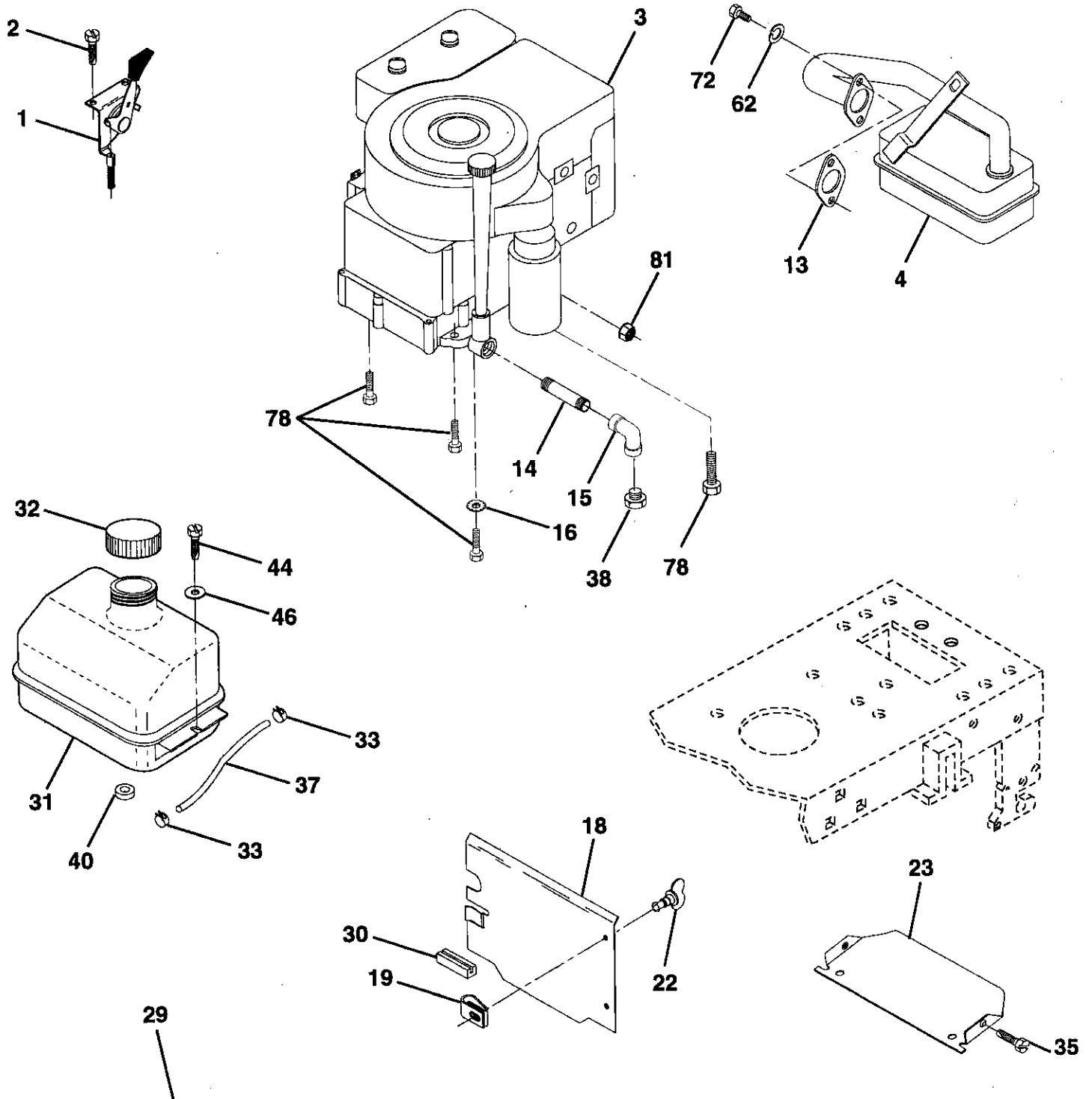
KEY NO.	PART NO.	DESCRIPTION
1	59192	Valve Cap, Tire
2	65139	Stem, Valve
3	106222X	Tire, Front
4	59904	Tube, Front Tire (Not Provided, Service Item Only)
5	106732X427	Rim, Front
6	278H	Fitting, Grease (Front Wheel Only)
7	9040H	Bearing, Flange (Front Wheel Only)
8	106108X427	Rim, Rear
9	122082X	Tire, Rear
10	7152J	Tube, Rear Tire (Not Provided, Service Item Only)
11	104757X	Cap, Axle
--	144334	Sealant, Tire 10 oz.

**NOTE:** All component dimensions given in U.S. inches  
1 inch = 25.4 mm

# REPAIR PARTS

TRACTOR - - MODEL NUMBER 917.256421

## ENGINE



**OPTIONAL EQUIPMENT**  
**Spark Arrester**

# REPAIR PARTS

## TRACTOR -- MODEL NUMBER 917.256421

### ENGINE

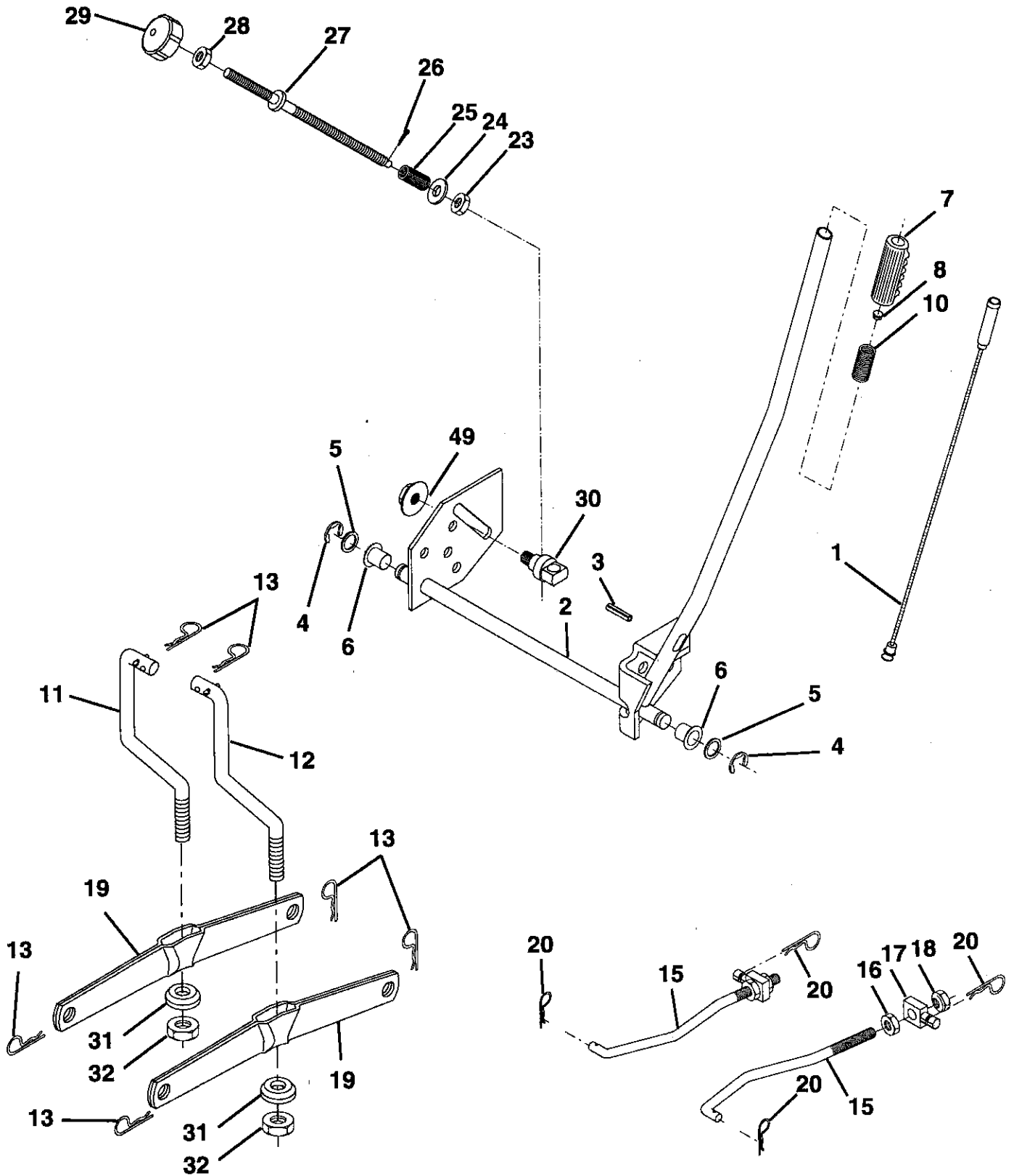
KEY NO.	PART NO.	DESCRIPTION
1	150600	Control, Throttle
2	17720410	Screw, Hex Head, Thread Cutting 1/4-20 x 5/8
3	152514	Engine, B&S, 15.5 Hp Diamond Model No. 28N707, Type No. 0636-A1
4	137352	Muffler
13	272293	Gasket, Exhaust
14	13280324	Nipple, Pipe 3/8 NPT x 3
15	13200300	Elbow, Standard 90°, 3/8-18 NPT
16	STD551237	Washer
18	136718	Shield, Heat
19	105839X	Receptacle, 1/4 Turn
22	149793	Stud, 1/4 Turn
23	150554	Shield, Heat
29	137180	Arrestor, Spark
30	127057X	Pinch Weld, Hood
31	109202X	Tank, Fuel
32	123549X	Cap Assembly, Fuel Tank, Vented
33	123487X	Clamp, Hose
35	17490512	Screw Thdrol 5/16-18 x 3/4 Tyt
37	137040	Line, Fuel
38	-----	Plug, Oil Drain (Order From Engine Manufacturer)
40	124028X	Bushing, Snap, Fuel Line
44	17490412	Screw, Hex Washer Head, Thd., Roll. 1/4-20 x 3/4
46	19091416	Washer 9/32 x 7/8 x 16 Gauge
62	STD551131	Washer, Lock
72	71070512	Screw, Hex Cap Head 5/16-18 x 3/4
78	17490620	Screw, Thd., Roll. 3/8-16 x 1-1/4
81	128861	Nut Flange 1/4-20 Starter Nut

**NOTE:** All component dimensions given in U.S. inches  
1 inch = 25.4 mm

# REPAIR PARTS

TRACTOR -- MODEL NUMBER 917.256421

## MOWER LIFT





# REPAIR PARTS

## TRACTOR - - MODEL NUMBER 917.256421

### MOWER LIFT

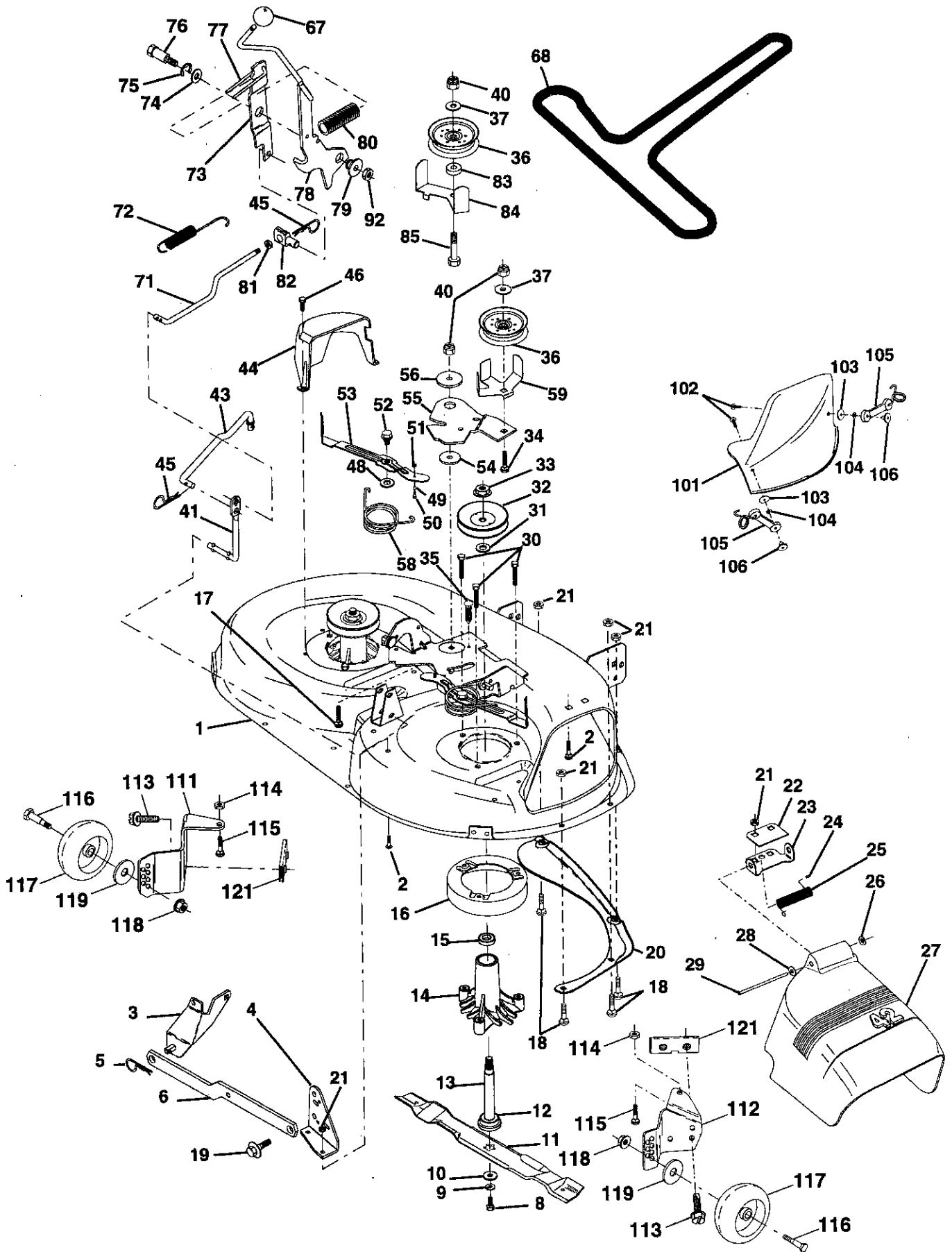
KEY NO.	PART NO.	DESCRIPTION
1	136973	Lift Lever Inner Wire Assembly
2	145117	Shaft Assembly, Lift
3	105767X	Pin, Groove
4	12000002	E-Ring
5	19211621	Washer 21/32 x 1 x 21 Gauge
6	120183X	Bearing, Nylon
7	125631X	Grip, Handle, Fluted
8	122365X	Button, Plunger, Red
10	122512X	Spring
11	139865	Link, Lift, L.H.
12	139866	Link, Lift, R.H.
13	4939M	Retainer Spring
15	127218	Link, Front
16	73350800	Nut, Hex, Jam 1/2-13 UNC
17	130171	Trunnion
18	73800800	Locknut, Hex, with Washer Insert 1/2-13 UNC
19	139868	Arm, Suspension, Rear
20	3146R	Retainer Spring
23	110807X	Nut, Special
24	19131016	Washer 13/32 x 5/8 x 16 Gauge
25	2876H	Spring
26	76020308	Pin, Cotter 3/32 x 1/2
27	126971X	Rod, Adjust, Lift
28	73350600	Nut, Hex, Jam 3/8-16 UNC
29	138057	Knob, Infinite Height Adjustment
30	150233	Trunnion, Depth Stop
31	140302	Bearing, Pvt, Lift Spherical
32	73540600	Nut, Crownlock 3/8-24
49	145212	Nut Hex Flange Lock

**NOTE:** All component dimensions given in U.S. inches  
1 inch = 25.4 mm

# REPAIR PARTS

TRACTOR - - MODEL NUMBER 917.256421

## MOWER DECK



# REPAIR PARTS

## TRACTOR - - MODEL NUMBER 917.256421

### MOWER DECK

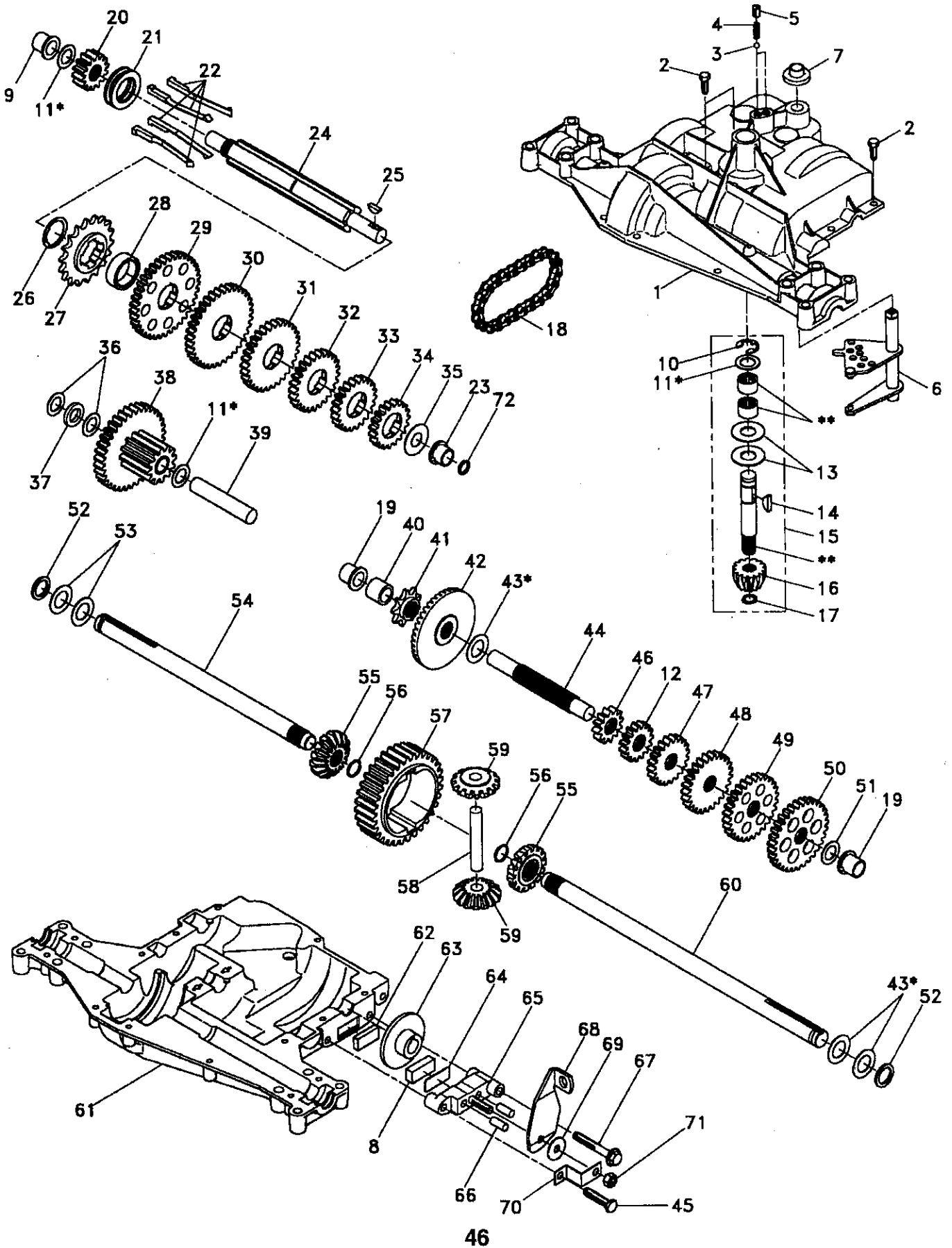
KEY NO.	PART NO.	DESCRIPTION	KEY NO.	PART NO.	DESCRIPTION
1	144393	Mower Housing	54	133943	Washer, Hardened
2	STD533107	Bolt	55	140084	Arm, Idler
3	138017	Bracket Assembly, Sway Bar, Front	56	122052X	Spacer, Retainer
4	138440	Bracket Assembly, Sway Bar	58	140086	Spring, Torsion Brakes
5	STD624008	Retainer Spring	59	141043	Guard, TUV Idler
6	130832	Arm, Suspension, Rear	67	149846	Knob Custom Oval
8	850857	Bolt, Hex 3/8-24 x 1.25 Grade 8	68	144200	V-Belt
9	STD551137	Washer, Lock	71	142427	Rod, Clutch, Primary, with Nibs
10	140296	Washer, Hardened	72	131870	Spring, Return
11	134149	Blade, Mulching	73	127847	Arm, Clutch, Secondary
12	129895	Bearing, Ball	74	121748X	Washer 25/32 x 1-5/8 x 16 Gauge
13	137645	Shaft Assembly, Mandrel, Vented (Includes Key Number 6)	75	12000029	Ring, Klip
14	128774	Housing, Mandrel, Vented	76	128903	Bolt, Shoulder 3/8-16 UNC x 1.44
15	110485X	Bearing, Ball, Mandrel	77	127845	Keeper, Spring
16	140329	Stripper, Vented Mower Deck	78	145132	Arm, Clutch, Primary
17	72110610	Bolt, Carriage 3/8-16 x 1-1/4	79	127498	Bushing, Large, Brass
18	72140505	Bolt, Carriage 5/16-18 x 5/8	80	128759	Spring, Mower Clutch
19	132827	Bolt, Shoulder	81	73350600	Nut, Hex Jam 3/8-16 Unc
20	136888	Baffle, Vortex	82	142028	Trunnion, Adj.
21	STD541431	Nut Crownlock 5/16-18 UNC	83	120958X	Washer Sintered
22	134753	Stiffener Bracket	84	144394	Keeper Belt Idler Fixed
23	131267	Bracket, Deflector	85	72140618	Bolt Carriage 3/8-16 x 2-1/4
24	105304X	Cap, Sleeve	92	STD541437	Nut
25	123713X	Spring, Torsion, Deflector	101	136420	Mulcher Cover
26	110452X	Nut, Push	102	71161010	Screw
27	130968	Shield, Deflector	103	19061216	Washer #10
28	19111016	Washer 11/32 x 5/8 x 16 Gauge	104	STD551110	Washer, Lock
29	131491	Rod, Hinge	105	130758	Latch Assembly, Bagger
30	138776	Screw Thdrol Hex Head Zinc Mwr	106	2029J	Nut, Weld
31	129963	Washer, Spacer	111	140353	Bracket, Gauge, Wheel L.H.
32	153535	Pulley, Mandrel	112	132262	Bracket, Gauge, Wheel R.H.
33	137266	Nut, Toplock, Flanged	113	17490512	Screw Thdrol 5/16-18 x 3/4
34	STD533717	Bolt	114	73510500	Nut, Hex, Keps 5/16-18 UNC
35	133835	Fastner, Christmas Tree	115	72110504	Bolt, Carriage 5/16 UNC x 1/2
36	131494	Pulley, Idler, Flat	116	137644	Bolt, Shoulder
37	19131316	Washer 13/32 x 13/16 x 16 Gauge	117	133957	Wheel, Gauge
40	STD541437	Nut Crownlock 3/8-16 UNC	118	73930600	Nut, Centerlock 3/8-16
41	133551	Rod, Pivot, with Nibs	119	19121414	Washer 3/8 x 7/8 x 14 Gauge
43	140083	Rod, Clutch, Secondary, with Nibs	121	143723	Bracket
44	140088	Guard, Mandrel, L.H.	--	130794	Mandrel Assembly (Includes Key Numbers 8-10, 12-15, 31 and 32)
45	STD624003	Retainer	--	145411	Mower Deck, Complete (Standard Deck, Order Separately Mulcher Plate and Gauge Wheel Components, Key Nos. 101-106 and 111-121)
46	137729	Screw, Thd. Roll 1/4-20 x 5/8			
48	133944	Washer, Hardened			
49	133940	Roller Assembly, Cam Follower			
50	131340	Bolt, Shoulder #10-24 Grade 5			
51	STD541410	Locknut			
52	139888	Bolt, Shoulder 5/16-18 UNC			
53	131845	Arm Assembly, Pad, Brake			

**NOTE:** All component dimensions given in U.S. inches  
1 inch = 25.4 mm

# REPAIR PARTS

TRACTOR - - MODEL NUMBER 917.256421

DANA TRANSAXLE - MODEL NUMBER 4360-97



# REPAIR PARTS

TRACTOR - - MODEL NUMBER 917.256421

DANA TRANSAXLE - MODEL NUMBER 4360-97

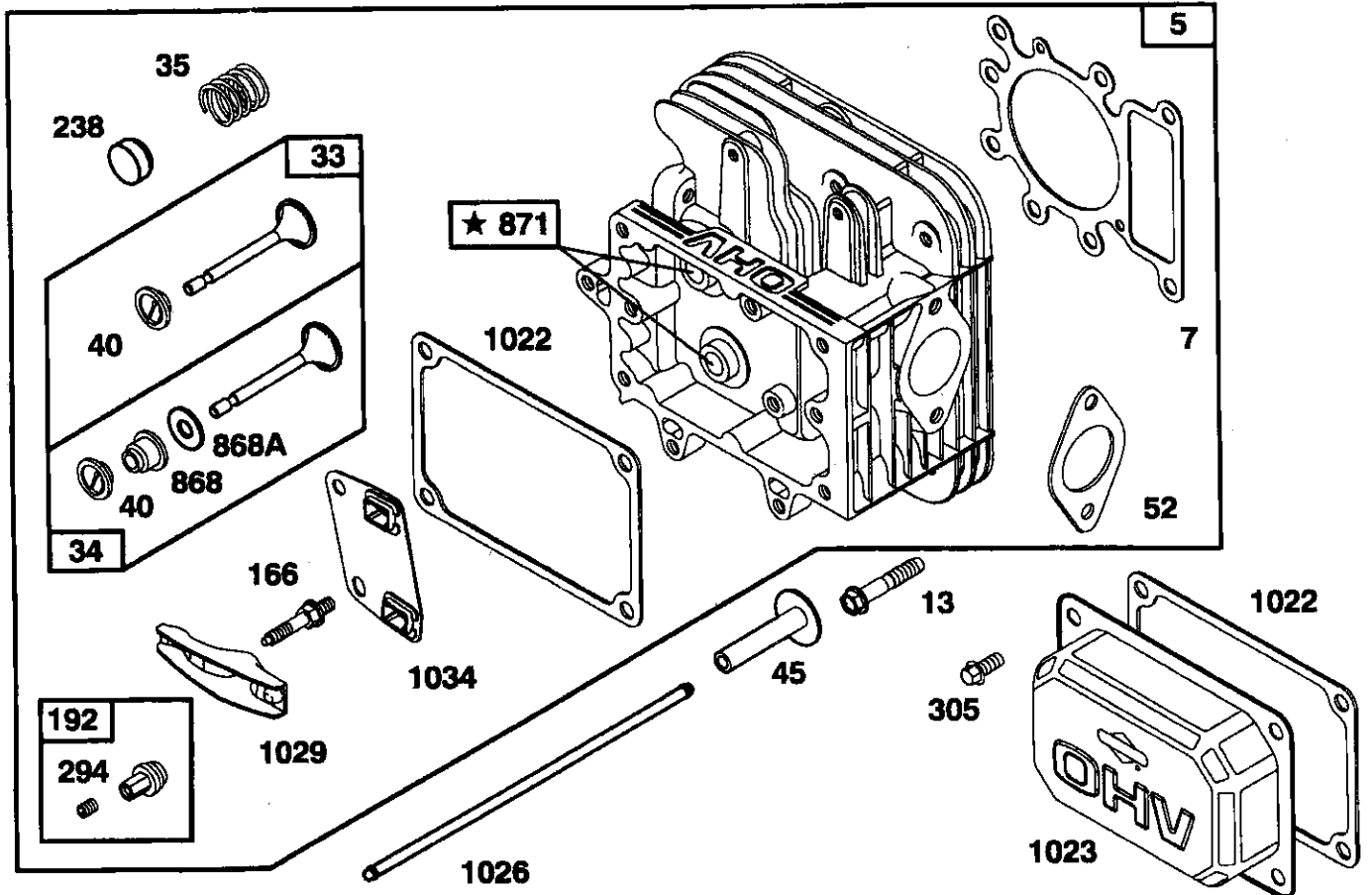
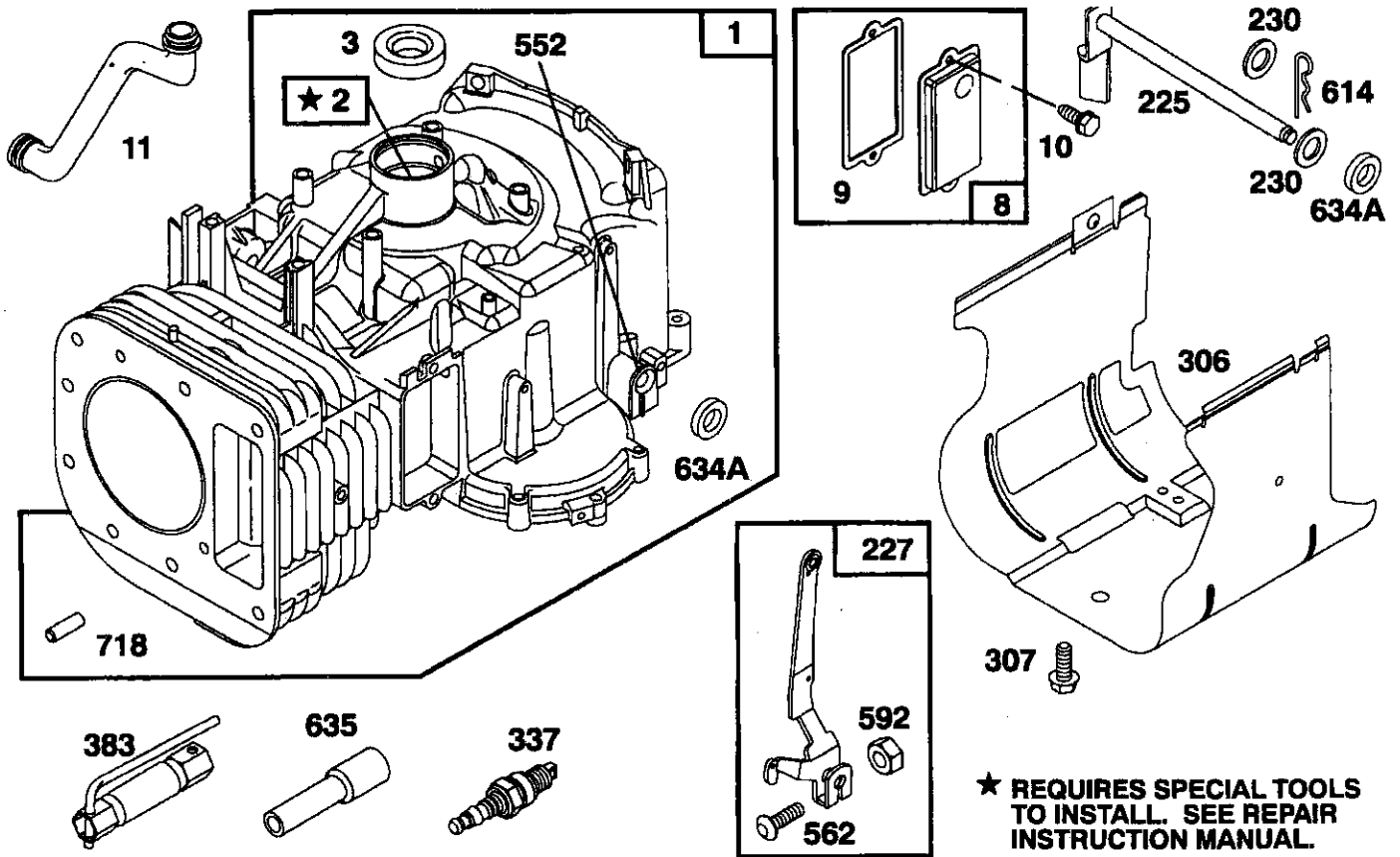
KEY PART NO. NO.	DESCRIPTION	KEY PART NO. NO.	DESCRIPTION
1 132671	Housing, Upper	39 124639X	Shaft, Idler
2 2274J	Screw, Tapping, Large 1/4-20 x .734	40 120472X	Spacer .633 x .87 x .755
3 134400	Ball, Detent	41 105928X	Sprocket, 9 Teeth (Reverse)
4 105904X	Spring, Detent	42 106605X	Gear, Bevel, 42 Teeth
5 105905X	Screw, Set	43 134394	Assembly, Kit, Shim, .750 Shaft
6 134788	Kit, Shifter Assembly	44 120473X	Shaft, Drive
7 134399	Boot, Shifter	45 106596X	Screw, Tapping, Large 5/16-18 x 1.44
8 120951X	Puck, Friction	46 142678	Gear, Spur, 12 Teeth (1 <sup>a</sup> )
9 148266	Bearing, Flange	47 120407X	Gear, Spur, 20 Teeth (3 <sup>a</sup> )
10 2225J	Ring, Retaining	48 106589X	Gear, Spur, 25 Teeth (4 <sup>a</sup> )
11 134793	Assembly, Kit, Shim, .625 Shaft	49 120408X	Gear, Spur, 28 Teeth (5 <sup>a</sup> )
12 143679	Gear, Spur, 15 Teeth (2 <sup>a</sup> )	50 105937X	Gear, Spur, 31 Teeth (6 <sup>a</sup> )
13 120415X	Washer, Plain .632 x 1.38 x .046	51 2226J	Washer, Plain .632 x 1.00 x .060
14 142674	Key, Woodruff, #9	52 134401	Washer, Neoprene
15 106846X	Assembly, Kit, Input Shaft	53 2264J	Washer, Plain .758 x 1.25 x .031
16 106095X	Pinion, Bevel, 14 Teeth	54 120474X	Axle, L.H.
17 105909X	Ring, Retaining	55 110081X	Gear, Miter, 15 Teeth
18 105910X	Chain, 24 Pitches	56 105941X	Ring, Retaining
19 105911X	Bearing, Flange	57 110071X	Gear, Spur, 32 Teeth
20 142675	Gear, Spur, 14 Teeth	58 120952X	Shaft, Cross
21 138246	Collar, Clutch	59 106592X	Gear, Miter, 15 Teeth
22 138238	Assembly, Kit, Clutch Keys	60 120475X	Axle, R.H.
23 148268	Bearing, Flange	61 142680	Housing, Lower
24 143673	Shaft, Intermediate	62 120961X	Puck, Friction
25 2244J	Key, Woodruff, #61	63 7294J	Disc, Brake
26 105916X	Ring, Retaining	64 108989X	Spacer
27 120470X	Sprocket, 18 Teeth (Reverse)	65 120953X	Jaw, Brake
28 110070X	Spacer	66 120954X	Pin, Dowel
29 142677	Gear, Spur, 37 Teeth (1 <sup>a</sup> )	67 134799	Screw, Tapping 5/16-18 x 2.25
30 142681	Gear, Spur, 35 Teeth (2 <sup>a</sup> )	68 138244	Lever, Actuating
31 124644X	Gear, Spur, 30 Teeth (3 <sup>a</sup> )	69 108996X	Washer, Plain .321 x 1.00 x .055
32 108980X	Gear, Spur, 25 Teeth (4 <sup>a</sup> )	70 120956X	Bracket, Anti-Rotation
33 120406X	Gear, Spur, 22 Teeth (5 <sup>a</sup> )	71 73810500	Locknut 5/16-24
34 134796	Gear, Spur, 19 Teeth (6 <sup>a</sup> )	72 148269	Seal, Oil
35 105925X	Washer, Plain .640 x 1.37 x .061	73 120416X	Grease
36 2232J	Washer, Plain .632 x 1.00 x .026		
37 108978X	Spacer .630 x 1.00 x .169		
38 110079X	Assembly, Gear, Combination, 12 Teeth and 35 Teeth		

**NOTE:** All component dimensions given in U.S. inches  
1 inch = 25.4 mm

# REPAIR PARTS

TRACTOR - - MODEL NUMBER 917.256421

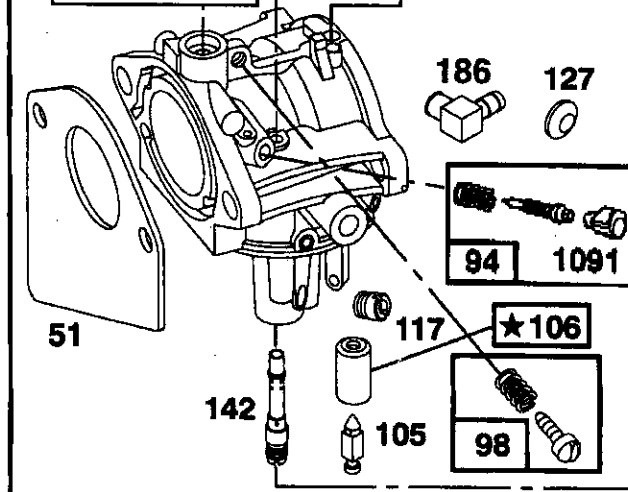
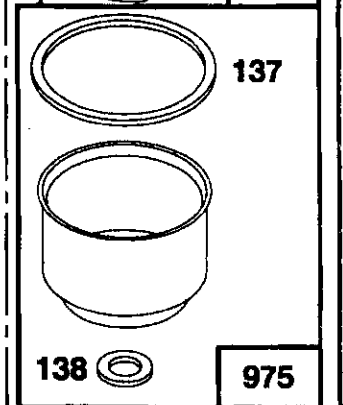
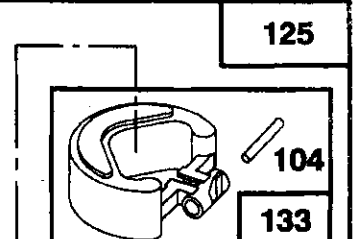
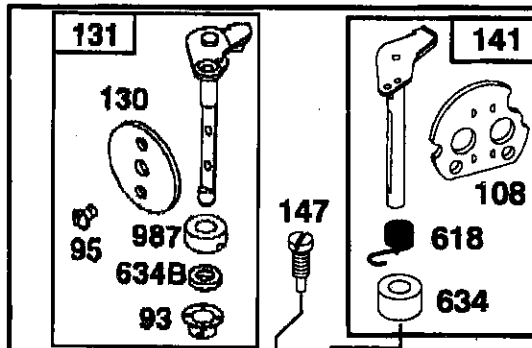
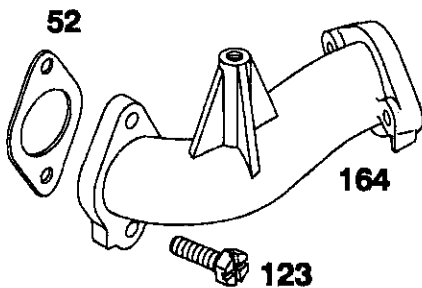
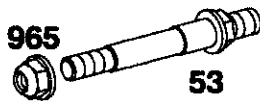
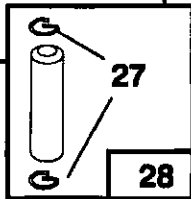
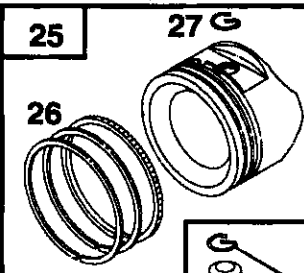
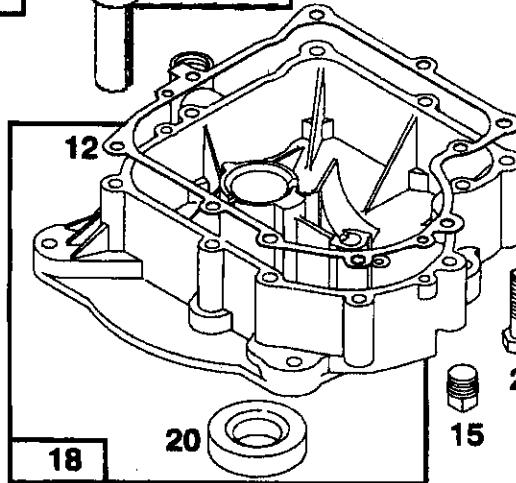
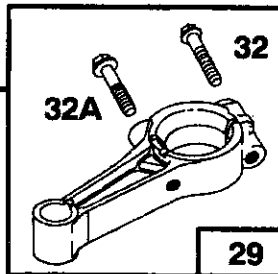
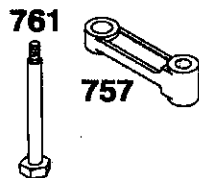
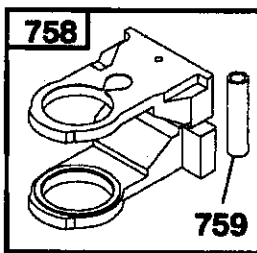
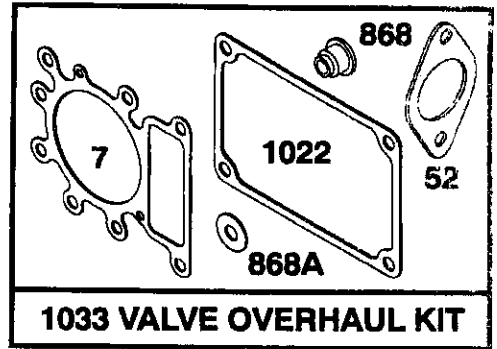
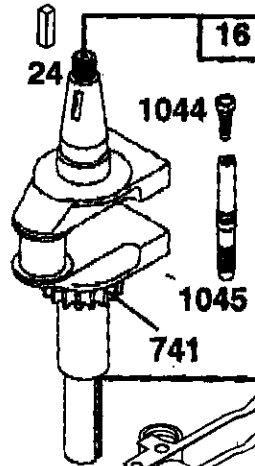
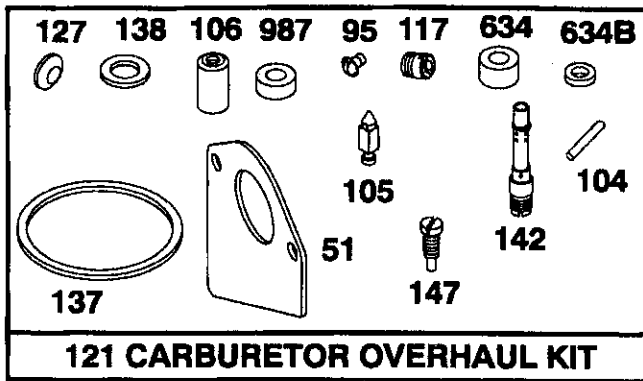
BRIGGS & STRATTON ENGINE - MODEL NUMBER 28N707, TYPE NUMBER 0636-A1



# REPAIR PARTS

TRACTOR - - MODEL NUMBER 917.256421

BRIGGS & STRATTON ENGINE - MODEL NUMBER 28N707, TYPE NUMBER 0636-A1

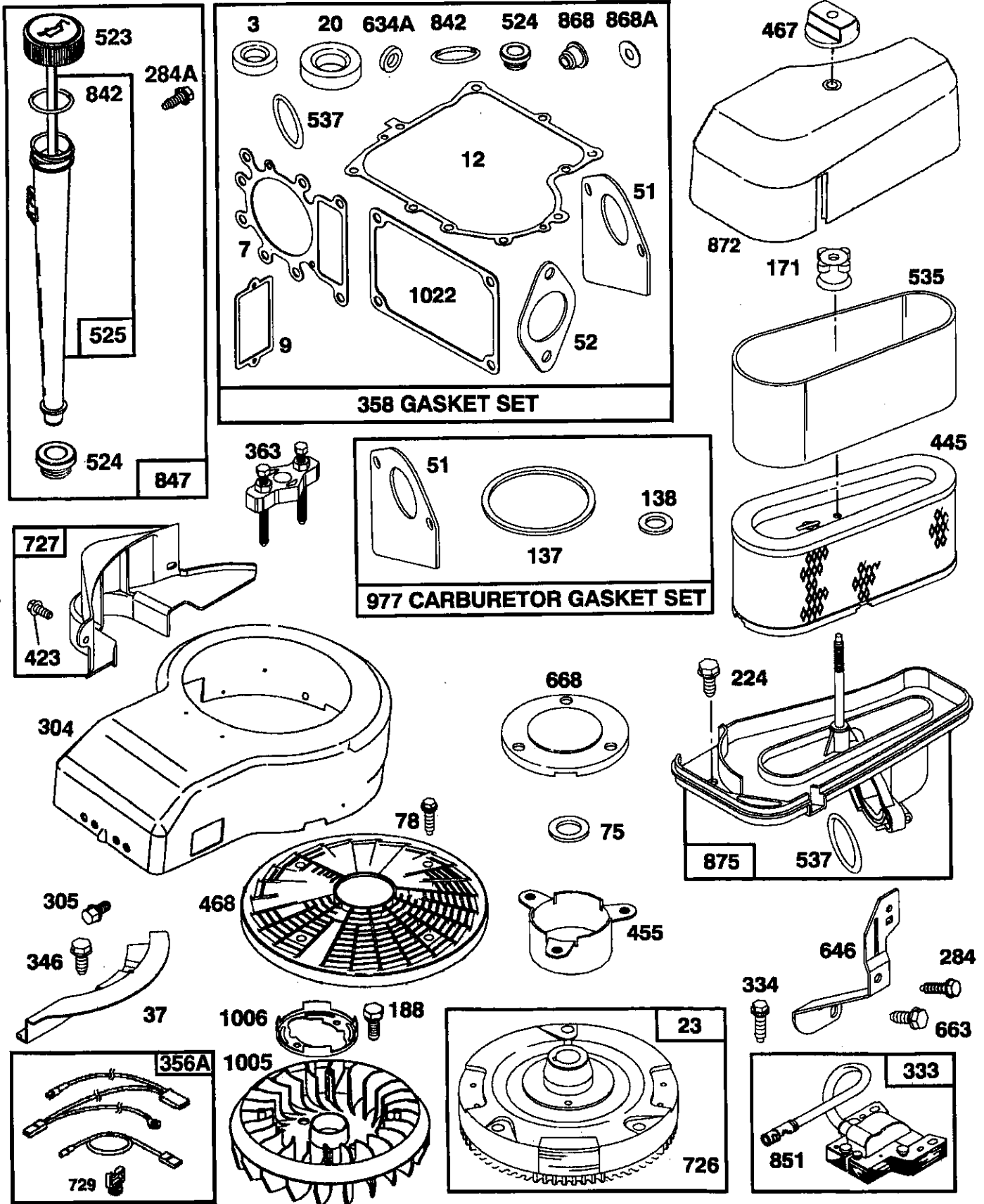


★ REQUIRES SPECIAL TOOLS TO INSTALL. SEE REPAIR INSTRUCTION MANUAL.

# REPAIR PARTS

TRACTOR - - MODEL NUMBER 917.256421

BRIGGS & STRATTON ENGINE - MODEL NUMBER 28N707, TYPE NUMBER 0636-A1

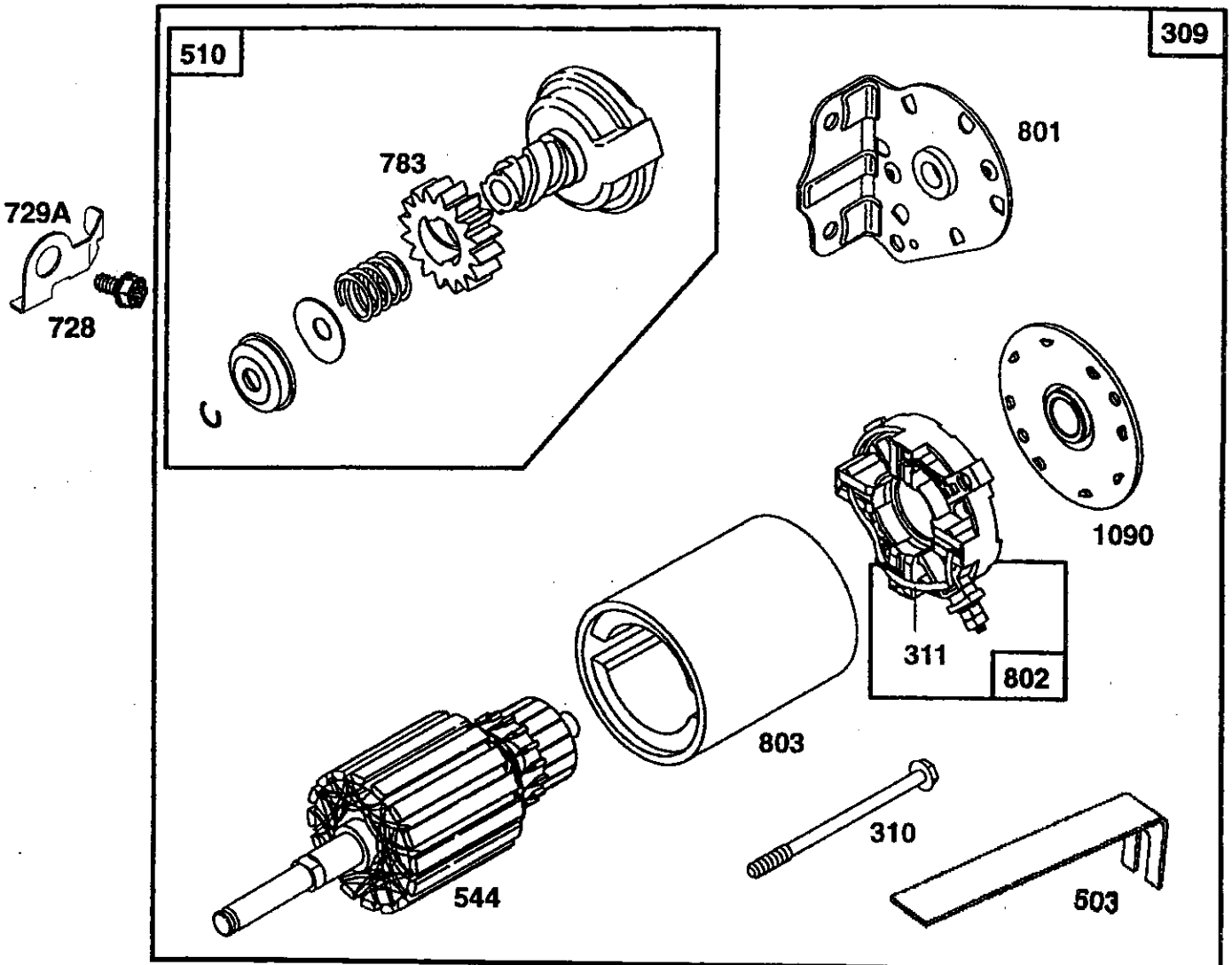
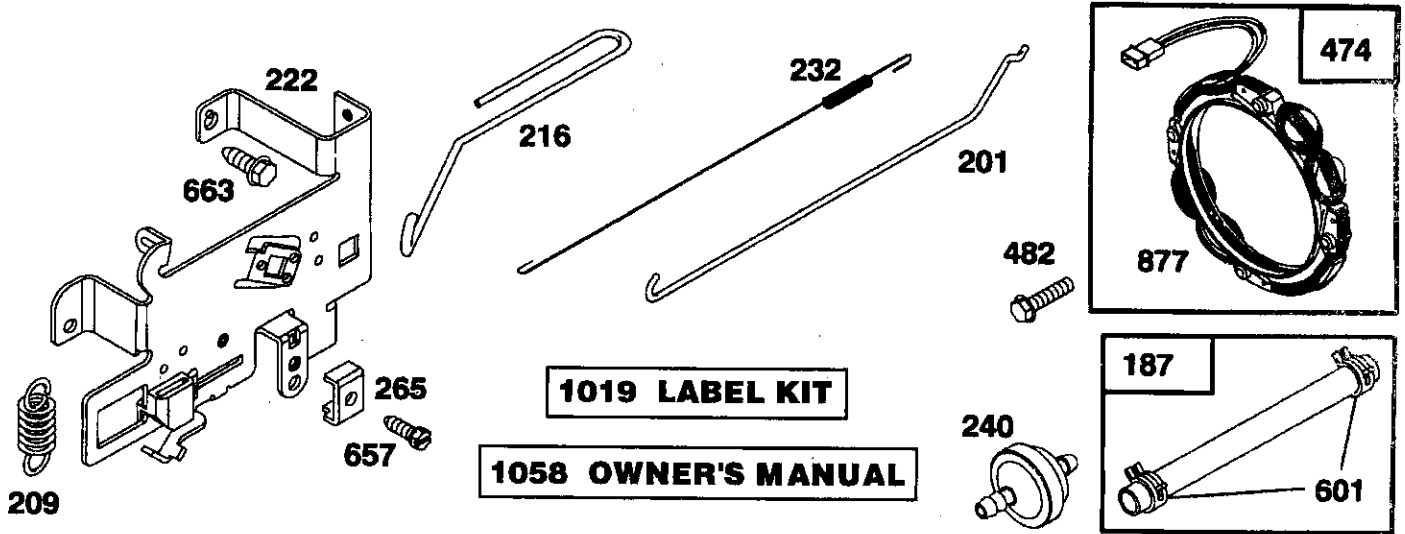




# REPAIR PARTS

TRACTOR - - MODEL NUMBER 917.256421

BRIGGS & STRATTON ENGINE - MODEL NUMBER 28N707, TYPE NUMBER 0636-A1



# REPAIR PARTS

## TRACTOR - - MODEL NUMBER 917.256421

### BRIGGS & STRATTON ENGINE - MODEL NUMBER 28N707, TYPE NUMBER 0636-A1

KEY PART NO. NO.	DESCRIPTION	KEY PART NO. NO.	DESCRIPTION	
1	496412	94	495932	Valve, Idle Adjustment
2	399265	95	94098	** Screw, Throttle
3	391086	98	495800	Screw, Idle Speed
5	495858	104	231789	** Pin, Float Hinge
7	272614	105	231855	** Valve Float
8	495735	106	231854	** Seat, Inlet Valve
9	27803	108	224540	Valve, Choke
10	94621	117	231858	** Jet, Needle Valve
11	281246	118	495932	Valve, Needle
12	271916	121	498116	Carburetor Overhaul Kit
	271997	123	94913	Screw, Torx®
	271996	125	498051	Carburetor Assembly
13	94728	127	- - -	** Plug, Welch (Sold in Kit Only)
15	94239	130	224539	Valve, Throttle
16	495162	131	494379	Shaft and Lever, Throttle
	94196	133	494381	Float, Carburetor
18	494238	137	281165	**** Gasket, Float Bowl
20	291675	138	281164	**** Washer, Bowl
22	94624	141	495931	Shaft and Lever, Choke
23	492326	142	231990	** Nozzle, Carburetor
		147	231985	** Pilot, Jet
24	222098	166	94555	Stud, Rocker Arm
25	495860	171	281051	Nut, Air Cleaner Mounting
	495977	186	493496	Elbow, Fuel Pipe
	495978	187	393815	Line, Fuel (11" Long, Cut to Suit)
	495979	188	94627	Screw, Sems
26	495854	192	492160	Screw Assembly, Rocker Arm
	495852	201	262767	Link, Governor
	495851	209	260695	Spring, Governor
	495855	216	262766	Link, Choke
27	263129	219	490815	Gear, Governor
28	299691	222	495611	Plate, Governor Control
	391286	224	94729	Screw, Sems, Air Cleaner
29	494504	225	495157	Crank, Governor
	495490	227	493935	Lever Assembly, Governor
		230	94927	Washer, Governor Crank
32	94695	232	262785	Spring, Governor Link
32A	94648	238	262836	Cap, Valve
33	495856	240	394358	Filter, Fuel (In Fuel Line)
34	495857	265	221535	Clamp, Casing
35	262811	284	94704	Screw, Hex Head
37	224502			
40	224641			* Included in Gasket Set (495993)
45	262411			** Included in Carburetor Kit (498116)
46	496884			*** Included in both Gasket Set (495993) and Valve Overhaul Kit (495992)
50	214047			
51	272465			**** Included in Gasket Set (495993), Carburetor Kit (498116) and Carburetor Gasket Set (494385)
52	272569			
53	94637			
75	25136			
78	94832			
93	281346			

**NOTE:** All component dimensions given in U.S. inches  
1 inch = 25.4 mm

# REPAIR PARTS

## TRACTOR -- MODEL NUMBER 917.256421

### BRIGGS & STRATTON ENGINE - MODEL NUMBER 28N707, TYPE NUMBER 0636-A1

KEY PART NO. NO.	DESCRIPTION	KEY PART NO. NO.	DESCRIPTION
284A 94903	Screw, Hex Head	729A 225170	Retainer, Wire
294 810068	Screw, Set	741 262932	Gear, Timing
304 496431	Housing, Blower	757 213998	Link, Counterweight
305 94786	Screw, Hex, Head, Blower Housing Mounting	758 399891	Counterweight Assembly
306 225020	Shield, Cylinder	759 298909	Pin, Counterweight
307 94930	Screw, Cylinder Shield	761 94593	Screw, Counterweight
309 497595	Motor, Starter	783 280104	Gear, Starter
310 497602	Bolt, Thru	801 394856	Cap, Drive
311 497608	Brush Set	802 497605	Cap, End
333 495859	Armature, Magneto	803 497604	Housing, Starter
334 93381	Screw, Sems, Armature Mounting	842 270920	* Seal, Oil Filler Cap
337 491055	Plug, Spark	847 496415	Fill Group, Oil
346 94896	Screw, Hex Head	851 224110	Terminal, Ignition Cable
356 497708	Wire Assembly	868 494435	*** Seal Assembly, Valve
356A 494705	Wire, Stop	868A 272610	*** Gasket, Valve
358 495993	Gasket Set	871 262835	Bushing, Guide (Intake & Exhaust)
363 19203	Puller, Flywheel	872 281361	Cover, Air Cleaner
383 89838	Wrench, Spark Plug	875 495862	Body, Air Cleaner
423 94903	Screw, Shoulder	877 393456	Diode and Connector Assembly
445 493909	Cartridge, Air Cleaner	947 497157	Solenoid
455 222561	Cup, Screen Mounting	965 94010	Nut, Hex
467 493903	Knob, Air Cleaner	975 495933	Bowl Assembly, Carburetor
468 494439	Screen, Flush Rotating	977 494385	Carburetor Gasket Set
474 393474	Stator, Alternator	987 281166	** Seal, Throttle Shaft
482 93621	Screw, Sems	1005 281400	Fan, Flywheel
510 497606	Drive, Starter	1006 224413	Retainer, Fan
523 495230	Cap and Dipstick, Oil Filler	1019 496758	Label Kit
524 68838	* Seal, Filler Tube	1022 272475	*** Gasket, Cover
525 496113	Tube, Oil Filler	1023 224552	Cover, Rocker Arm
535 272403	Element, Filter	1026 494432	Rod, Push, Intake
537 281106	* O-Ring, Air Cleaner	495136	Rod, Push, Exhaust
544 497603	Armature, Starter	1029 224554	Arm, Rocker
552 231597	Bushing, Governor Crank	1033 495992	Valve Overhaul Kit
562 94907	Bolt, Carriage	1034 495248	Guide Assembly, Push Rod
592 231082	Nut, Hex	1044 94673	Screw, Hex Head
601 93053	Clamp, Fuel Pipe	1045 231828	Extension, Crank Shaft
614 93306	Pin, Cotter	1054 270723	Tie, Cable
618 262803	Spring, Choke Return	1058 272623	Manual, Owner's
634 281168	** Seal, Choke Shaft	1090 497607	Retainer, Brush
634A 491323	* Seal, Governor	1091 281364	Cap, Limiter
634B 281167	Washer, Throttle Shaft		
635 280872	Boot, Spark Plug		
646 224546	Brace, Air Cleaner		
657 94906	Screw, Sems		
663 94929	Screw, Self-Tapping		
668 280848	Spacer		
718 230192	Pin, Dowel		
726 392134	Gear, Ring (Includes Mounting Hardware)		
727 490324	Cover, Starter		
728 94951	Screw, Hex Head		
729 281390	Clip, Wire		

RPM Settings: Low: 1650-1850, High: 3200-3400

\* Included in Gasket Set (495993)

\*\* Included in Carburetor Kit (498116)

\*\*\* Included in both Gasket Set (495993) and Valve Overhaul Kit (495992)

\*\*\*\* Included in Gasket Set (495993), Carburetor Kit (498116) and Carburetor Gasket Set (494385)

**NOTE:** All component dimensions given in U.S. inches  
1 inch = 25.4 mm

---

# SERVICE NOTES

---