

REPAIR PARTS MANUAL
MODEL NO. 256720
Lawn Tractor

CRAFTSMAN[®]

HOW TO USE THIS MANUAL

This manual is designed to provide the customer with a means to identify the parts on his/her tractor when ordering repair parts. The illustrations may or may not represent the actual assemblies; therefore, it is not recommended to use this manual as a guide to assemble or disassemble the tractor. Some hardware and parts are drawn larger in order to more readily identify them.

Each tractor has its own model number.

The model number for your tractor can be found on the fender under the seat.

When ordering parts, always give the following information:

- Product - "Tractor"
- Model Number - "256720"
- Part Number
- Part Description

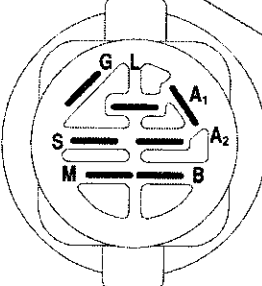
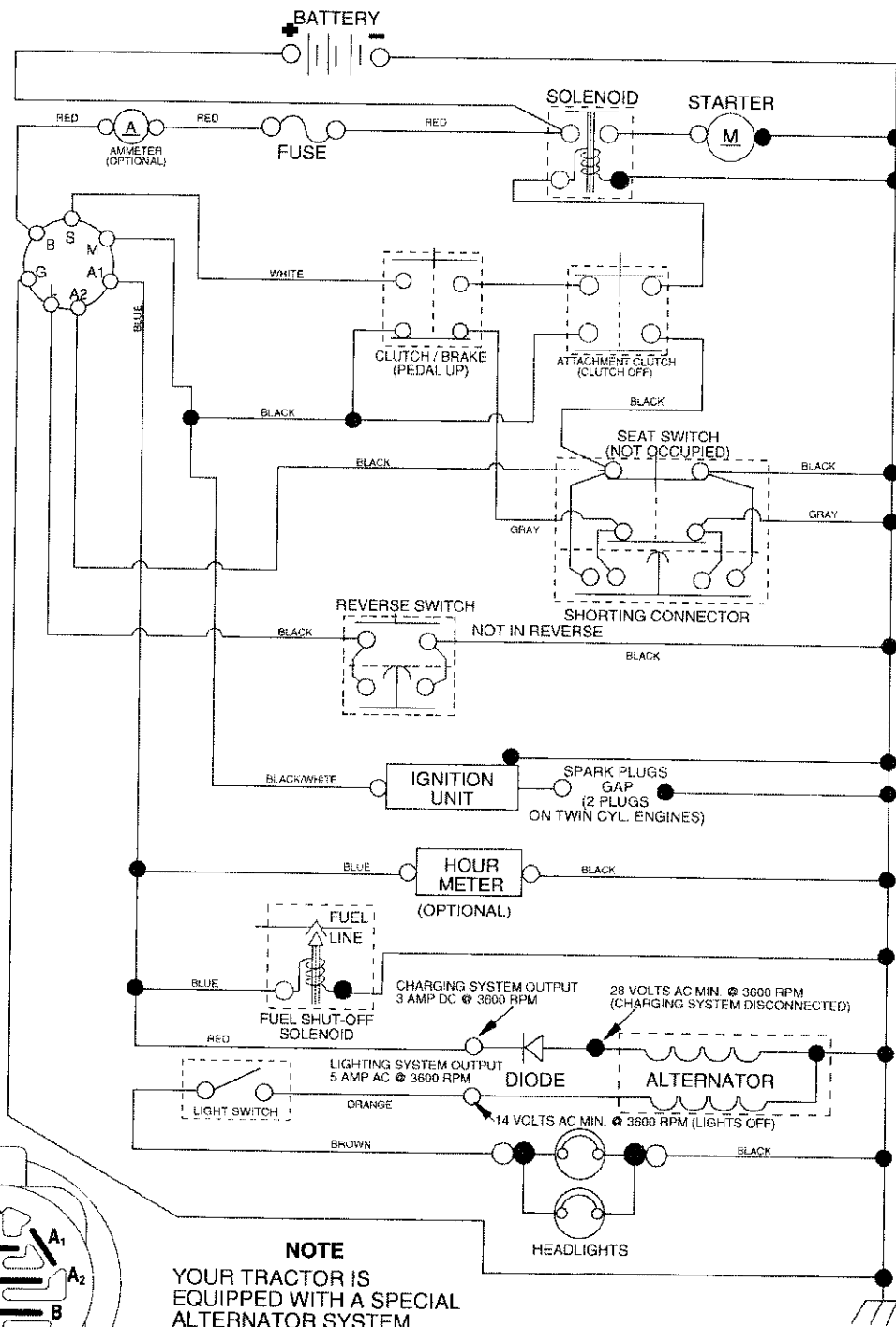
TABLE OF CONTENTS

SCHEMATIC	3
ELECTRICAL.....	4-5
CHASSIS	6-7
DRIVE.....	8-9
STEERING	10
DECALS.....	11
ENGINE.....	12-13
MOWER DECK	14-15
SEAT	16
MOWER LIFT.....	17
TRANSAXLE.....	18-19
ENGINE BREAKDOWN.....	20-24
WARRANTY.....	BACK COVER

TRACTOR- -MODEL NO. 917.256720

SCHEMATIC

02836_193374 / 390



IGNITION SWITCH

POSITION	CIRCUIT	"MAKE"
OFF	M+G+A1	
RUN/OVERRIDE	B+A1	
RUN	B+A1	L+A2
START	B + S + A1	

NOTE
 YOUR TRACTOR IS EQUIPPED WITH A SPECIAL ALTERNATOR SYSTEM. THE LIGHTS ARE NOT CONNECTED TO THE BATTERY, BUT HAVE THEIR OWN ELECTRICAL SOURCE. BECAUSE OF THIS, THE BRIGHTNESS OF THE LIGHTS WILL CHANGE WITH ENGINE SPEED. AT IDLE THE LIGHTS WILL DIM. AS THE ENGINE IS SPEEDED UP, THE LIGHTS WILL BECOME THEIR BRIGHTEST.

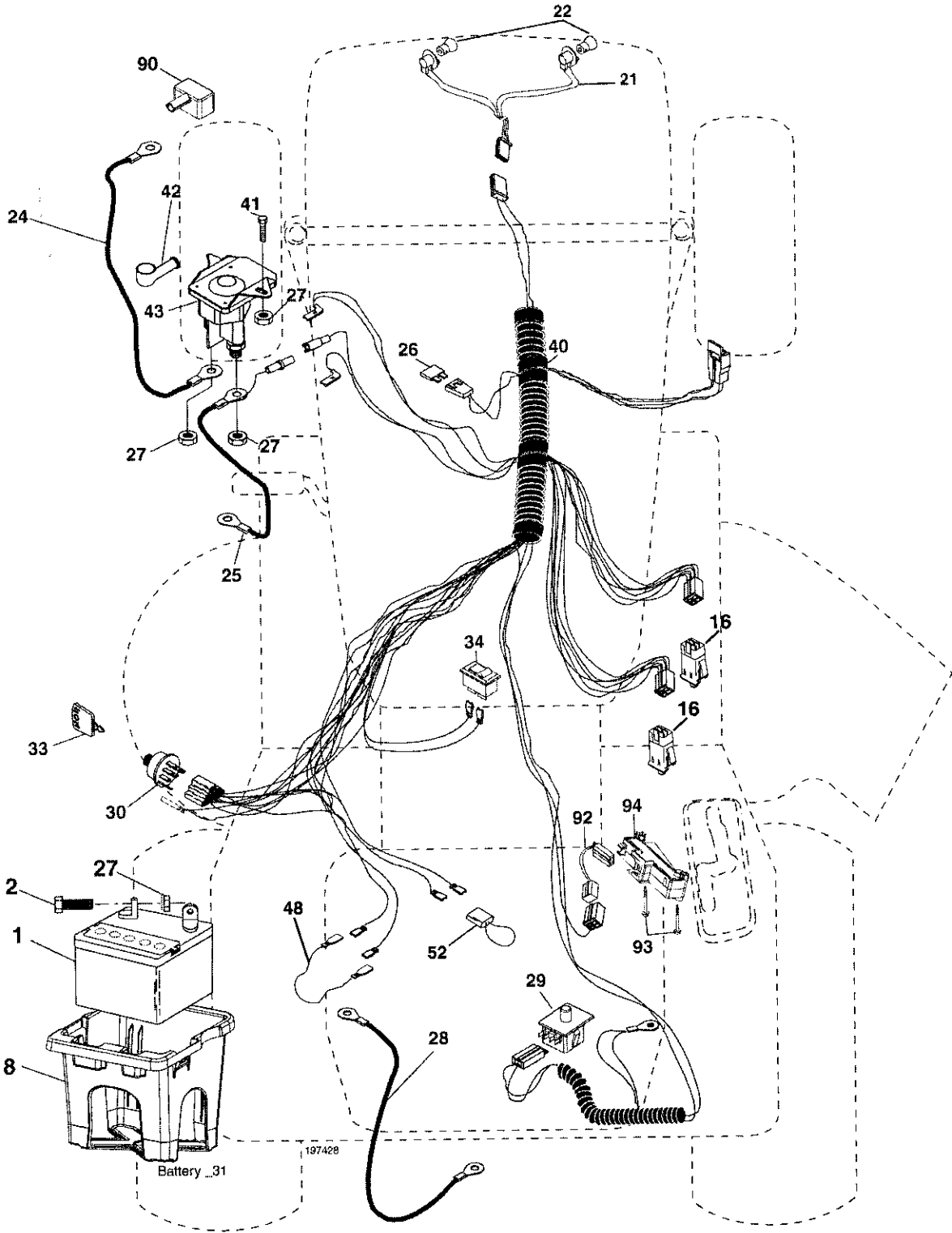
● NON-REMOVABLE CONNECTIONS
 ○ REMOVABLE CONNECTIONS

WIRING INSULATED CLIPS
NOTE: IF WIRING INSULATED CLIPS WERE REMOVED FOR SERVICING OF UNIT, THEY SHOULD BE REPLACED TO PROPERLY SECURE YOUR WIRING.

02836

TRACTOR- -MODEL NO. 917.256720

ELECTRICAL



ELECTRICAL

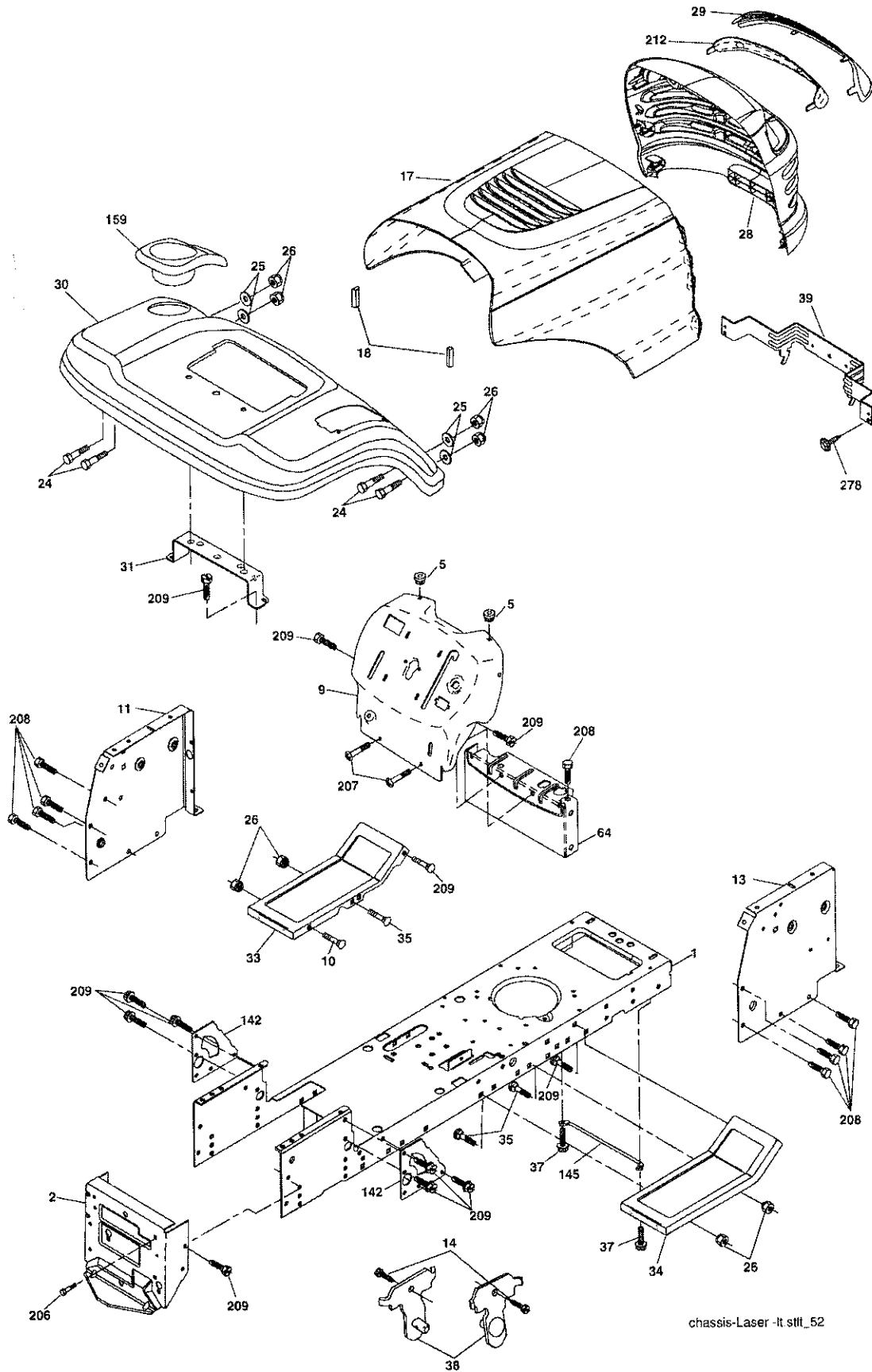
TRACTOR- -MODEL NO. 917.256720

KEY PART		
NO.	NO.	DESCRIPTION
1	163465	Battery
2	74760412	Bolt Hex Hd 1/4-20 unc x 3/4
8	176689	Box Battery
16	176138	Switch, Interlock
21	183759	Harness Asm Light W/4152j
22	4152J	Bulb Light #1156
24	4799J	Cable Battery 6 Ga. 11" red
25	146147	Cable Battery
26	175158	Fuse
27	73510400	Nut Keps Hex 1/4-20 Unc
28	4207J	Cable Ground 6 Ga. 12" black
29	192749	Switch Seat
30	193350	Switch Ign
33	140403	Key Ign
34	110712X	Switch Light
40	197428	Harness Ign
41	71110408	Bolt Blk. Fin Hex 1/4-20 unc x 1/2
42	131563	Cover Terminal Red
43	192507	Solenoid
48	140844	Adapter Ammeter
52	141940	Protection Wire Loop
90	180449	Cover Terminal
92	196615	Harness Pigtail Reverse Switch
93	192540	Screw Plastic 10-14 x 2.0
94	191834	Module Reverse ROS

NOTE: All component dimensions given in U.S. inches
1 inch = 25.4 mm

TRACTOR- -MODEL NO. 917.256720

CHASSIS AND ENCLOSURES



chassis-Laser -lt stll_52

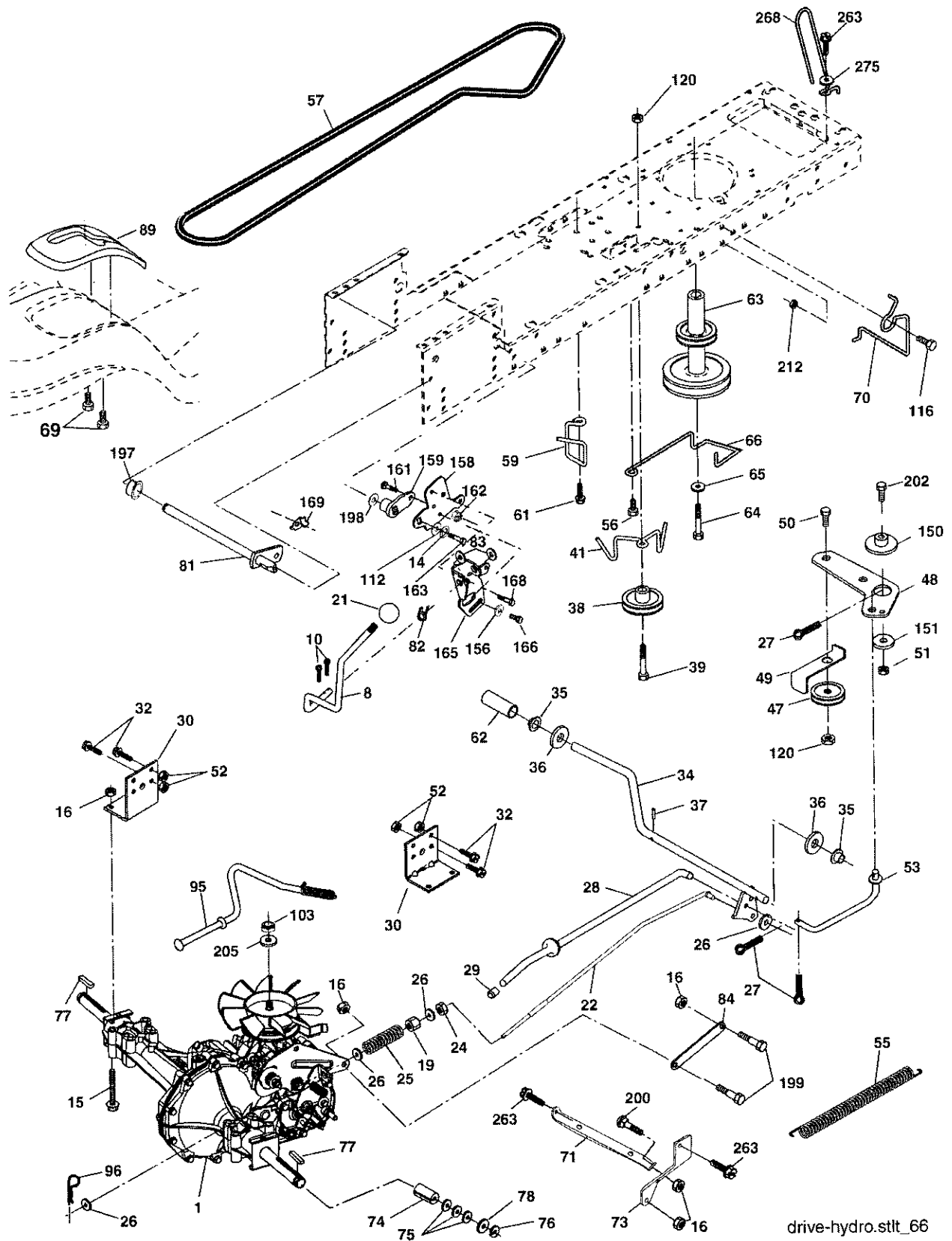
TRACTOR- -MODEL NO. 917.256720
CHASSIS AND ENCLOSURES

KEY PART NO. NO.	DESCRIPTION
1 174619	Chassis
2 176554	Drawbar
5 155272	Bumper Hood/Dash
9 193510X013	Dash
10 STD533710	Bolt, Carriage 3/8-16 x 1
11 174996	Panel, Dash, L.H.
13 172105X010	Panel, Dash, R.H.
14 17490608	Screw Thdrol 3/8-16 x 1/2
17 185682X615	Hood Assembly
18 184921	Bumper Hood
24 STD523710	Bolt Fin. Hex 3/8-16 x 1
25 19131312	Washer 13/32 x 13/16 x 12 Ga.
26 STD541437	Nut
28 188636	Grille/Lens Asm. (Includes Key Nos. 29 and 212)
29 174332X599	Lens
30 192528x615	Fend/Ftrest
31 136619	Bracket, Fender Support
33 179716X615	Footrest LH
34 179717X615	Footrest RH
35 STD533707	Bolt Rdhd Sht Sqnk 3/8-16 x 3/4
37 17490508	Screw Thdrol 5/16-18 x 1/2
38 175710	Pivot Bracket Assembly, Rear
39 407807	Bracket Pivot Laser Lt
64 154798	Dash Lower STLT
142 175702	Plate Reinforcement STLT
145 409167	Rod Pivot Chassis/Hood
159 169473X428	Cupholder
206 170165	Bolt Shoulder 5/16-18 TT
207 17670508	Screw Thdrol 5/16-18 x 1/2 Tytt
208 17670608	Screw Thdrol 3/8-16 x 1/2
209 17000612	Screw Hexwsh Thdr 3/8-16 x 3/4
212 175143	Insert Lens Reflective
278 191611	Screw 10 x 3/4 Single Lead-Hex
-- 5479J	Plug, Button

NOTE: All component dimensions given in U.S. inches
1 inch = 25.4 mm

TRACTOR- -MODEL NO. 917.256720

GROUND DRIVE



drive-hydro.stlt_66

TRACTOR- -MODEL NO. 917.256720

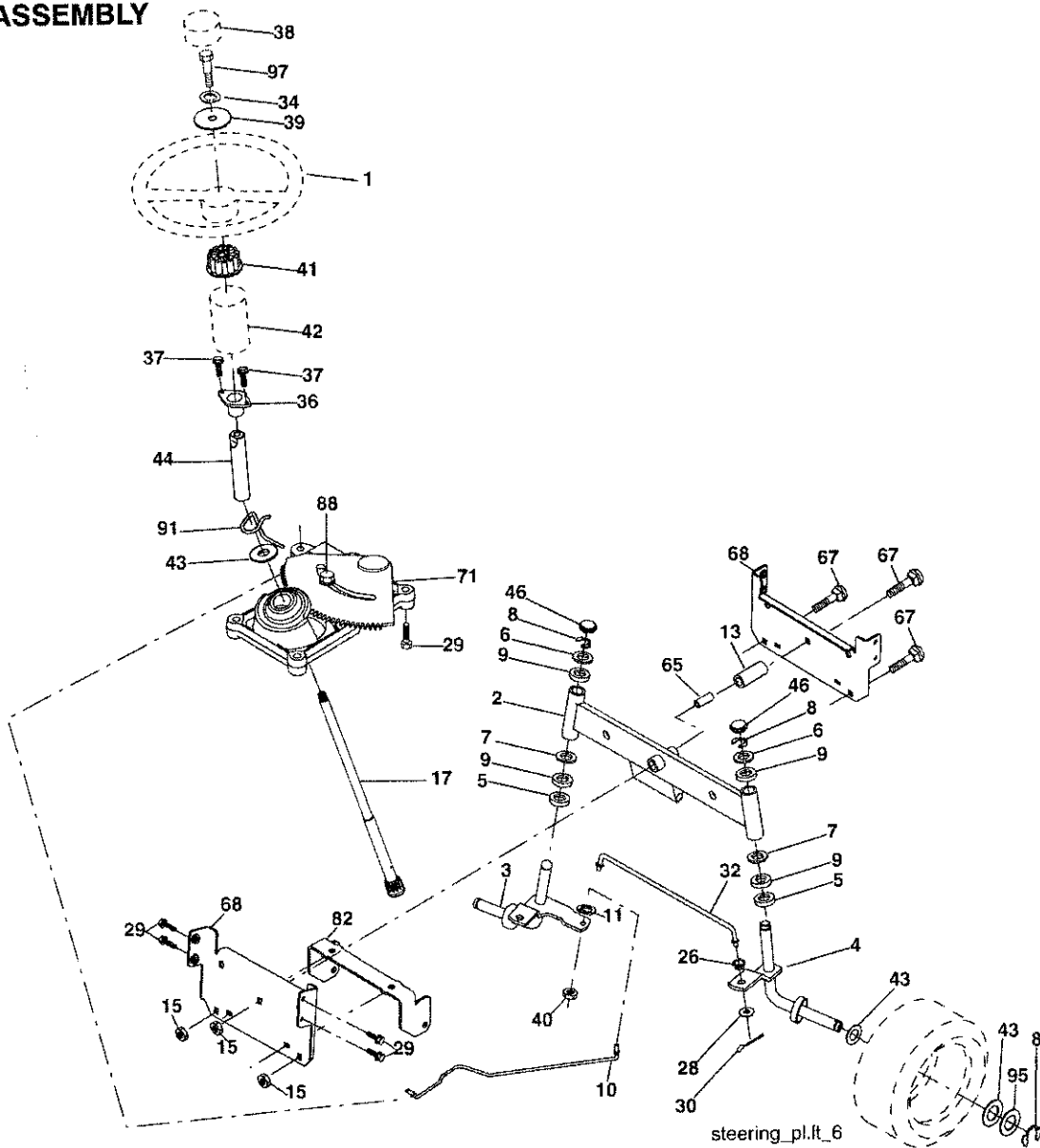
GROUND DRIVE

KEY PART NO. NO.	DESCRIPTION	KEY PART NO. NO.	DESCRIPTION
1	-----	71	169183
8	192706	73	169182
10	STD561210	74	137057
14	STD551125	75	121749X
15	74490544	76	12000001
16	73800500	77	123583X
19	73800600	78	121748X
21	130564	81	165596
22	169498	82	165711
24	73350600	83	19171216
25	106888X	84	169843
26	19131316	89	192056X428
27	STD561210	95	170201
28	175765	96	STD624003
29	71673	103	73940800
30	174973	112	19091210
32	74760512	116	72140608
34	175578	120	73900600
35	120183X	150	175456
36	19211616	151	19133210
37	1572H	156	166002
38	179114	158	165589
39	72110622	159	183900
41	175556	161	72140406
47	127783	162	73680400
48	154407	163	74780416
49	123205X	165	165623
50	72110612	166	17490510
51	STD541437	168	165492
52	STD541431	169	165580
53	199652	197	169613
55	105709X	198	169593
56	17060620	199	169612
57	140294	200	72140508
59	169691	202	72110614
61	17120614	205	19171616
62	8883R	212	145212
63	180219	263	17000612
64	173937	268	182402
65	10040700	275	19131614
66	154778		
69	142432		
70	180218		
	Transmission (See Breakdown)		
	Hydro Gear Model 322-0510		
	Rod, Shift		
	Pin, Cotter 1/8 x 1		
	Washer Lock 1/4		
	Bolt Hex Flghd 5/16-18 Gr. 5		
	Nut, Lock Hex w/lns 5/16-18 unc		
	Nut Lock Hex w/lns 3/8-16		
	Knob		
	Rod, Brake		
	Nut		
	Spring, Rod, Brake		
	Washer 13/32 x 13/16 x 16 Ga.		
	Pin, Cotter 1/8 x 3/4		
	Rod, Parking Brake		
	Cap, Parking Brake		
	Bracket, Transmission		
	Bolt Hex 5/16-18 unc x 3/4		
	Shaft, Foot Pedal		
	Bearing, Nylon		
	Washer		
	Pin, Roll		
	Pulley, Composite		
	Bolt Rdhd 3/8-16 unc x 2-3/4 Gr. 5		
	Keeper, Belt, Idler		
	Pulley, Idler, V-Belt		
	Bellcrank Clutch Grnd Drustl		
	Retainer, Belt		
	Bolt		
	Nut Crownlock 3/8-16 unc		
	Nut Crownlock 5/16-18		
	Link, Clutch		
	Spring, Return, Clutch		
	Screw 3/8-16 x 1 1/4		
	V-Belt, Drive		
	Keeper, Belt, Center		
	Screw 3/8-16 x .875		
	Cover, Pedal		
	Pulley, Engine		
	Bolt Hex 7/16-20 x 4 Gr. 5-1.5 Thr		
	Washer		
	Keeper, Belt Engine Hydro		
	Screw Hex Wsh Hi-Lo 1/4 x 1/2 unc		
	Guide, Belt, Mower Drive RH		
			Strap, Torque, Lh
			Strap, Torque, Rh
			Spacer, Axle
			Washer 25/32 x 1-1/4 x 16 Ga.
			Ring, E
			Key, Square
			Washer 25/32 x 1-5/8 x 16 Ga.
			Shaft Asm Cross
			Spring, Torsion
			Washer 17/32 x 3/4 x 16 Ga.
			Link Transaxle
			Console, Shift
			Control Asm Bypass Hydro
			Spring, Retainer 1"
			Nut, Hex Jam Toplock 1/2-20 unf
			Washer 9/32 x 3/4 x 10 Ga.
			Bolt Rdhd Sq Neck 3/8-16 x 1
			Nut Lock Flg 3/8-16
			Spacer Retainer
			Washer 13/32 x 2 x 10
			Washer 5/16 x 1.0 x 1.25
			Bracket Shift Mount
			Hub Shift
			Bolt Rdhd Sqnk 1/4-20 x 3/4 Gr. 5
			Nut Crownlock 1/4-20 unc
			Bolt Hex Fin 1/4-20 x 1
			Bracket Pivot Lever
			Screw 5/16-18 x 5/8
			Bolt Shoulder 5/16-18 x .561
			Plate Fastener Cross Shaft
			Nyliner Snap-In
			Washer Nyliner
			Bolt Shoulder 5/16-18 unc
			Bolt RdHd Sqnk 5/16-18 unc x 1
			Bolt Carr. Sh 3/8-16 x 1-3/4 Gr. 5
			Washer 17/32 x 1 x 16 Ga.
			Nut Hex Flange Lock
			Screw 3/8-16 x 3/4
			Guard Muffler
			Washer 13/32 x 1 x 14 Ga.

NOTE: All component dimensions given in U.S. inches
1 inch = 25.4 mm

TRACTOR- -MODEL NO. 917.256720

STEERING ASSEMBLY



KEY PART NO. NO.

1	186780
2	195673
3	169840
4	169839
5	6266H
6	121748X
7	19272016
8	12000029
9	3366R
10	175121
11	STD551137
13	136518
15	145212
17	190753
26	126847X
28	19131416
29	17000612
30	STD561210
32	192757
34	10040500
36	155099

DESCRIPTION

Steering Wheel
Axle Assembly
Spindle Assembly, L.H.
Spindle Assembly, R.H.
Washer Thrust
Washer 25/32 x 1-5/8 x 16 Ga.
Washer 27/32 x 1-1/4 x 16 Ga.
Ring, Klip
Bearing Col.
Draglink
Washer, Lock
Spacer Bearing Axle Front
Nut, Hex Flange Lock
Shaft, Steering
Bushing, Link, Drag
Screw 13/32 x 7/8 x 16 Ga.
Screw 3/8-16 x 3/4
Pin Cotter
Rod, Tie
Washer Lock Hvy. Hlcl Spr 5/16
Bushing, Steering

KEY PART NO. NO.

37	152927
38	186781
39	19113812
40	73540600
41	186737
42	145054X428
43	121749X
44	190752
46	121232X
65	160367
67	72110618
68	169827
71	175146
82	199978
88	175118
91	175553
95	188967
97	74780564

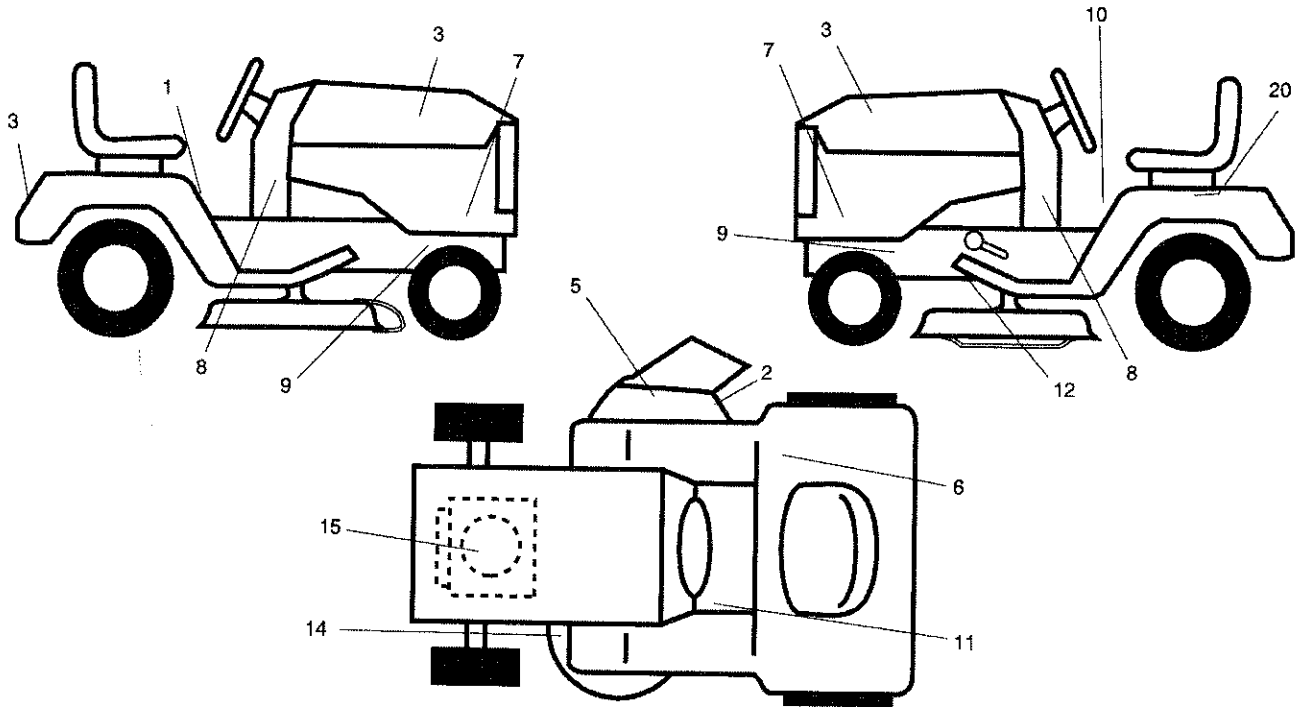
DESCRIPTION

Screw
Insert, Steering Wheel
Washer 11/32 ID x 3/8 OD x 12 Ga.
Nut Crownlock 3/8-24
Adaptor, Steering Wheel
Boot, Steering Shaft
Washer 25/32 x 1-1/4 x 16 Ga.
Extension Shaft Steering
Cap, Spindle
Spacer Brace Axle
Bolt RDHD Sqkn 3/8-16 x 2-1/4
Axle, Brace
Steering Asm.
Bracket Susp. Chassis Front
Bolt Shoulder 7/16-20 unc
Clip Steering
Washer Hardened
Bolt 5/16-18 unc x 4 Gr. 5

NOTE: All component dimensions given in U.S. inches
10 1 inch = 25.4 mm

TRACTOR- -MODEL NO. 917.256720

DECALS



KEY PART NO. NO.

- 1 400389
- 2 182166
- 3 411697
- 4 196841
- 5 196357
- 6 180432
- 7 403415
- 8 405070
- 9 159736
- 10 140837
- 11 159737
- 12 197490

DESCRIPTION

- Decal, Oper. Instr.
- Decal, Cutfinger CE O2
- Decal, Hood, R.H./L.H.
- Decal, Warning Eng. Syms.
- Decal, Deflect Wrn Cutfinger Sym
- Decal, Fender 100 D/B/CE
- Decal, Sdpnl
- Decal, Chassis
- Decal, Chassis Hot Muffler
- Decal, Saddle Brake Parking
- Decal, Brake/Clutch Symbol
- Decal, V-Belt Drive Schematic

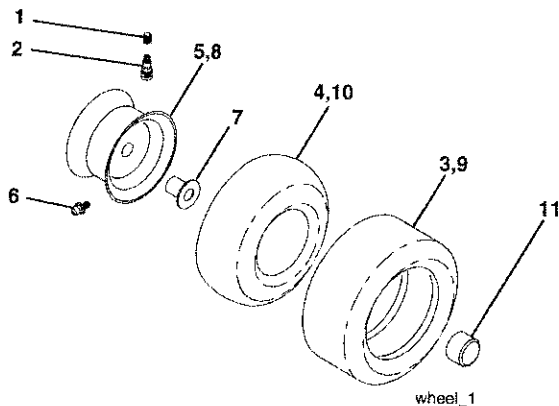
KEY PART NO. NO.

- 14 160396
- 15 411042
- 20 145005
- 138311
- 166960
- 162598
- 179768X428
- 179769X428
- 413161
- 413162
- 413163
- 413164
- 413165

DESCRIPTION

- Decal, V-Belt Schematic
- Decal, Engine
- Decal, Battery Dngr/Psn Eng
- Decal, Lift Handle
- Decal, By-Pass
- Decal, Drawbar Load Limit
- Pad, Footrest LH STLT
- Pad, Footrest RH STLT
- Manual, Operator's Euro
- Manual, Operator's Scand
- Manual, Operator's E-Bloc
- Manual, Operator's Baltic
- Manual, Parts

WHEELS & TIRES



KEY PART NO. NO.

- 1 59192
- 2 65139
- 3 106222X
- 4 59904
- 5 106732X624
- 6 278H
- 7 9040H
- 8 106108X624
- 9 106268X
- 10 7152J
- 11 104757X428
- 144334

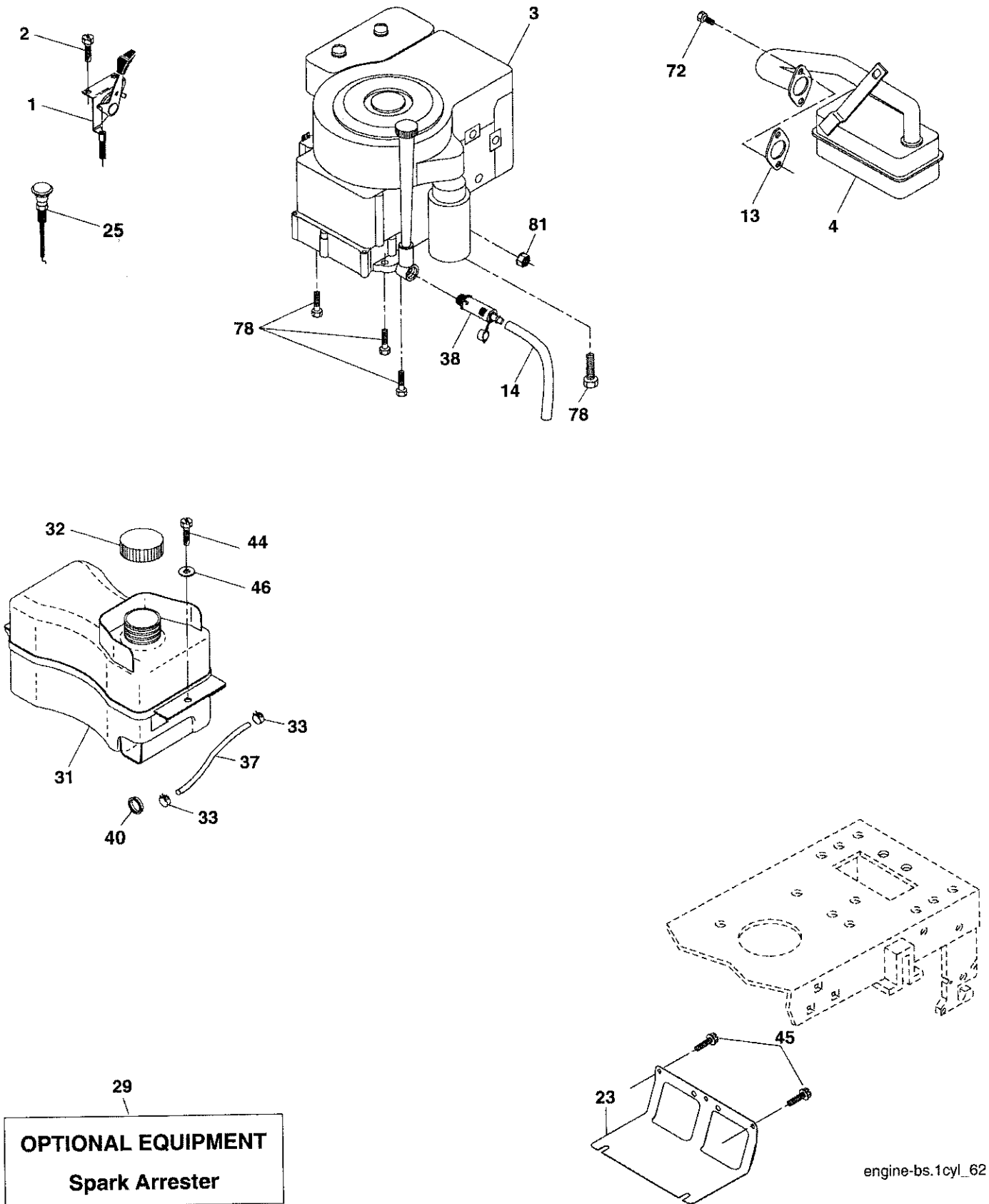
DESCRIPTION

- Cap Valve Tire
- Stem Valve
- Tire F Ts 15 x 6.0 - 6 Service
- Tube Inner Front #35060
- Rim Asm 6" front Service
- Fitting Grease
- Bearing Flange
- Rim Asm 8" rear Service
- Tire R Ts 18 x 9 5-8 Service
- Tube Rear 9.5 x 8 Service
- Cap Axle Blk 1.50 x 1.00
- Sealant, Tire (10 oz. tube)

NOTE: All component dimensions given in U.S. inches
1 inch = 25.4 mm

TRACTOR- -MODEL NO. 917.256720

ENGINE



engine-bs.1cyl_62

TRACTOR- -MODEL NO. 917.256720

ENGINE

KEY PART NO. NO.	DESCRIPTION	KEY PART NO. NO.	DESCRIPTION
1 170545	Control, Throttle/Choke	37 137040	Line, Fuel
2 17720408	Screw, Hex Head, Thread Cutting 1/4-20 x 1/2	38 181654	Plug Drain Oil Easy
3 -----	Engine, Briggs Model 31P977 0881-B1	40 124028X	Bushing, Snap, Fuel Line
4 137352	Muffler	44 17670412	Screw, Hex Washer Head, Thd., Roll. 1/4-20 x 3/4
13 165291	Gasket	45 17000612	Screw Hxwsh Thdr 3/8-16 x 3/4
14 148456	Tube Drain Oil Easy	46 19091416	Washer 9/32 x 7/8 x 16 Ga.
23 169837	Shield Brn/Dbr Guard	72 192334	Screw Socket Head 5/16-18 x 3/4
25 187770X428	Control Choke	78 17060620	Screw 3/8-16 x 1-1/4
29 137180	Arrestor, Spark	81 73510400	Nut Keps Hex 1/4-20
31 407516	Tank, Fuel		
32 197725	Cap Assembly, Fuel		
33 123487X	Clamp, Hose		

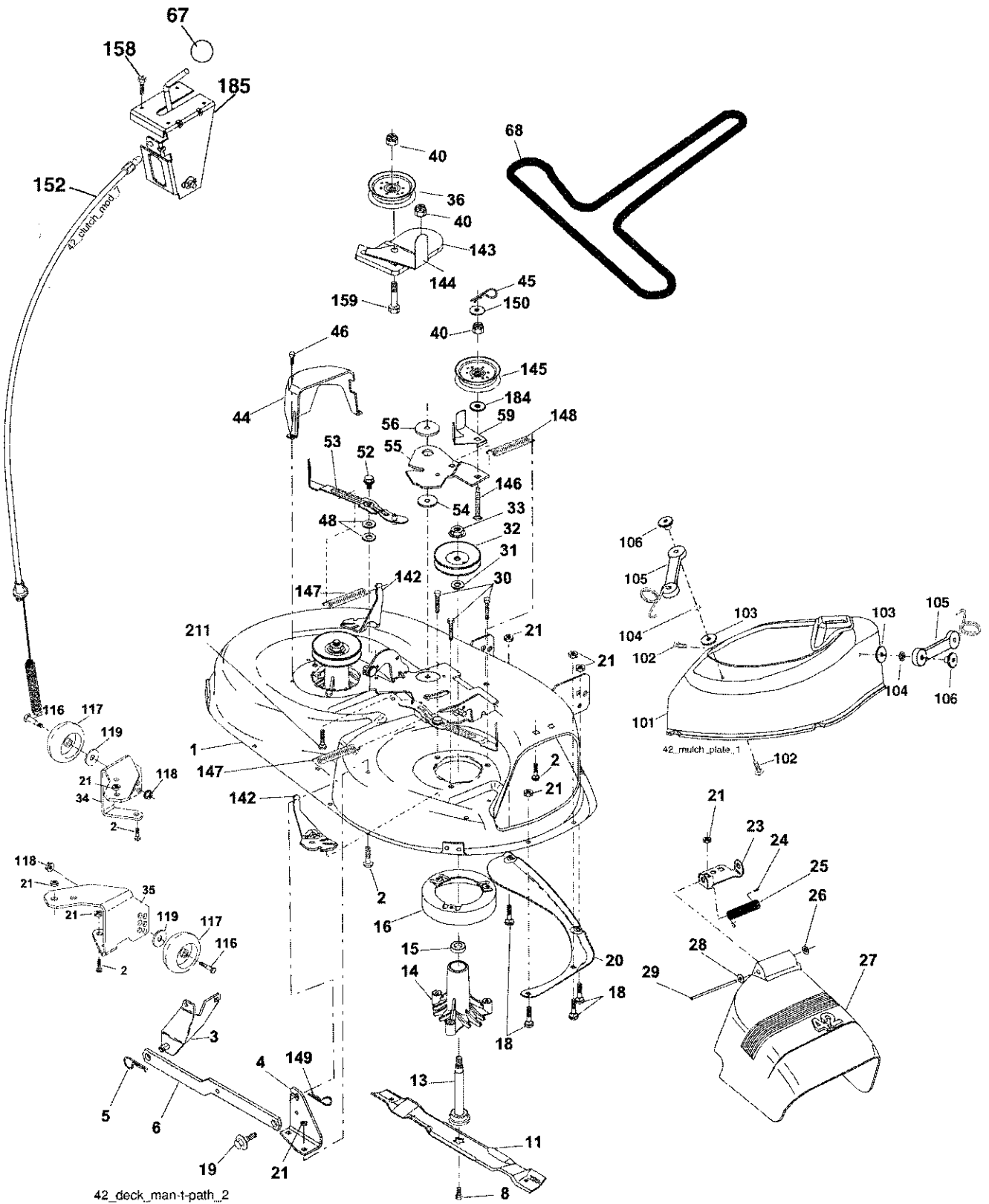
NOTE: All component dimensions given in U.S. inches
1 inch = 25.4 mm

Engine Power Rating Information

The gross power rating for individual gas engine models is labeled in accordance with SAE (Society of Automotive Engineers) code J11940 (Small Engine Power & Torque Rating Procedure), and rating performance has been obtained and corrected in accordance with SAE J1995 (Revision 2002-5). Actual gross engine power will be lower and is affected by, among other things, ambient operating conditions and engine-to-engine variability. Given both the wide array of products on which engines are placed and the variety of environmental issues applicable to operating the equipment, the gas engine will not develop the rated gross power when used in a given piece of power equipment (actual "on-site" or net horsepower). This difference is due to a variety of factors including, but not limited to, accessories (air cleaner, exhaust, charging, cooling, carburetor, fuel pump, etc.), application limitations, ambient operating conditions (temperature, humidity, altitude), and engine-to-engine variability. Due to manufacturing and capacity limitations, Briggs & Stratton may substitute an engine of higher rated power for this Series engine.

TRACTOR- -MODEL NO. 917.256720

MOWER DECK



TRACTOR- -MODEL NO. 917.256720

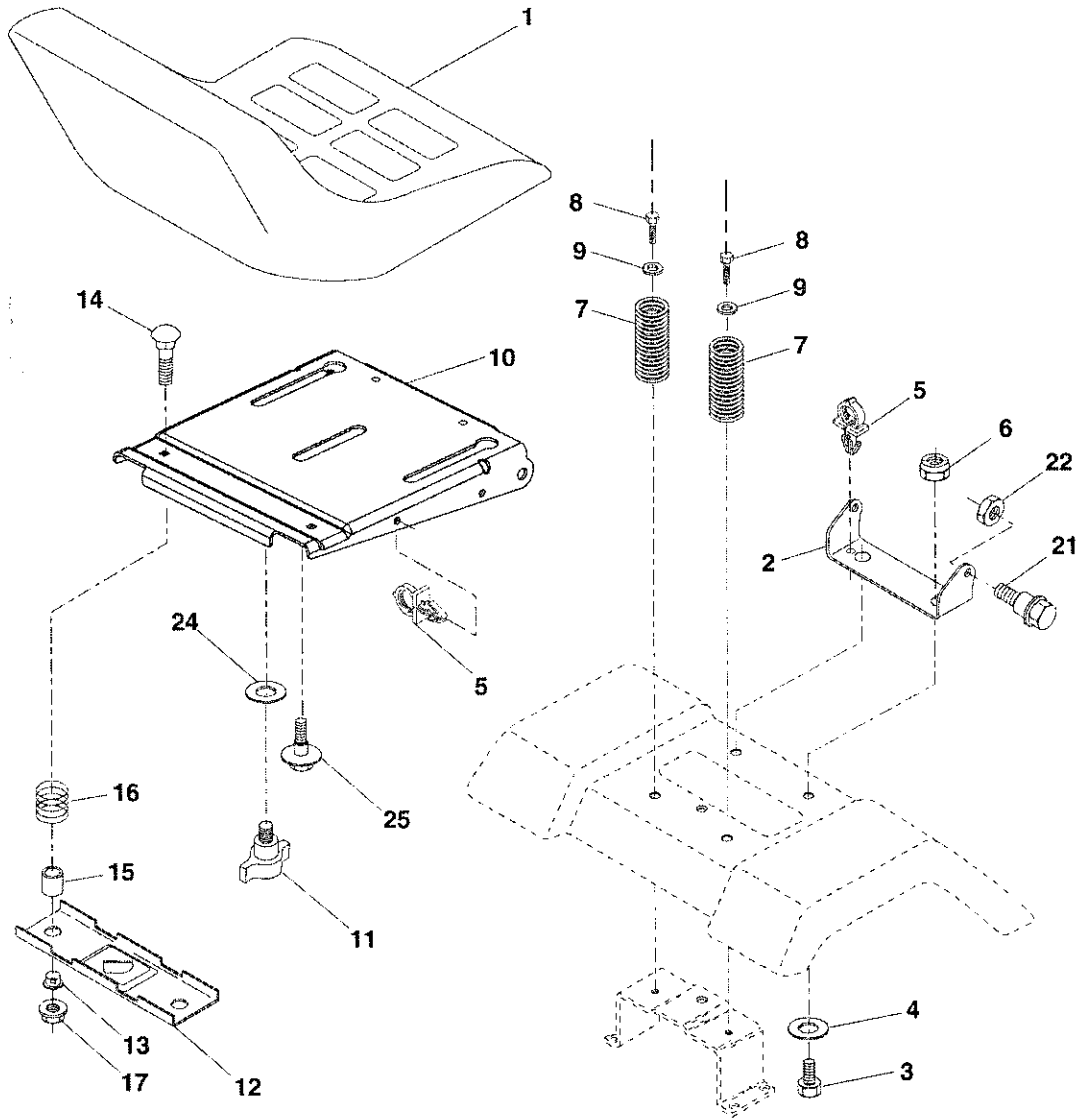
MOWER DECK

KEY PART NO. NO.	DESCRIPTION	KEY PART NO. NO.	DESCRIPTION
1 165892	Mower Deck Assembly, 42"	55 155046	Arm, Idler
2 STD533107	Bolt	56 165723	Spacer, Retainer
3 138017	Bracket Assembly,Sway Bar, Front	59 141043	Guard, TUV Idler
4 165460	Bracket Sway Bar 38/42" Deck	67 149846	Knob Custom Oval
5 STD624008	Retainer Spring	68 180215	V-Belt
6 178024	Bar Sway Deck	101 193107	Cover Mulching
8 193003	Bolt/Washer Asm. 7/16-20 unf	102 71081010	Screw 10-24 x 5/8
11 134149	Blade, 42" Mulching Std (For mulching mowers only)	103 19061216	Washer #10
13 192872	Shaft Asm Mandrel	104 10071000	Washer Lock #10
14 187281	Housing Mandrel	105 160793	Latch Asm.
15 110485X	Bearing, Ball, Mandrel	160 2029J	Nut Weld .327/.304. #10-24
16 174493	Stripper, Vented Mower Deck	116 4898H	Bolt Shld
18 72140505	Bolt, Carriage 5/16-18 x 5/8	117 188606	Wheel Gage
19 132827	Bolt, Shoulder	118 73930600	Nut Centerlock 3/8-16
20 159770	Baffle, Vortex	119 19121414	Washer 3/8 x 7/8 x 14
21 STD541431	Nut Crownlock 5/16-18 unc	142 195784	Anchor Spring Brake Mower
23 177563	Bracket, Deflector	143 157109	Bracket Arm Idler 42"
24 105304X	Cap, Sleeve	144 158634	Keeper Belt 42" Clutch Cable
25 123713X	Spring, Torsion, Deflector	145 165888	Pulley Idler Flat
26 110452X	Nut, Push	146 171977	Bolt Carriage Idler
27 130968X428	Shield, Deflector	147 179748	Spring Extension
28 19111016	Washer 11/32 x 5/8 x 16 Ga.	148 169022	Spring Return Idler
29 131491	Rod, Hinge	149 165898	Retainer Spring Yellow Zinc
30 173984	Screw Thdrol Washer Head	150 19091210	Washer 9/32 x 3/4 x 10 Ga.
31 187690	Washer, Spacer	152 181555	Cable Clutch 42 In
32 153535	Pulley, Mandrel	158 17720408	Screw Hex Thd Cut 1/4-20 x 1/2
33 400234	Nut, Toplock, Flanged	159 72140614	Bolt Rdhd Sqn 3/8-16 unc x 3/4
34 404784	Bracket Wheel Gauge LH	184 19131410	Washer 13/13 x7/8 x 10 Ga.
35 404785	Bracket Wheel Gauge RH	185 188234	Head Asm Cable Clutch
36 131494	Pulley, Idler, Flat	211 72110612	Bolt Carr. Sh. 3/8-16 x 1-1/2 Gr. 5
40 73900600	Nut Lock 3/8-16 unc	-- 192870	Mandrel Assembly (Includes Housing, Shaft and Shaft Hardware Only - Pulley Not Included)
44 140088	Guard, Mandrel, L.H.	-- 413296	Replacement Mower, Complete
45 4497H	Retainer		
46 137729	Screw, Thd. Roll 1/4-20 x 5/8		
48 133944	Washer, Hardened		
52 139888	Bolt, Shoulder 5/16-18 unc		
53 184907	Arm Assembly, Pad, Brake		
54 178515	Washer, Hardened		

NOTE: All component dimensions given in U.S. inches
1 inch = 25.4 mm

TRACTOR- -MODEL NO. 917.256720

SEAT



seat_it.knob_15

KEY PART NO. NO.

KEY PART NO. NO.	DESCRIPTION
1 188709	Seat
2 140551	Bracket Pnt Pivot Seat (blk)
3 71110616	Bolt Fin Hex 3/8-16 unc x 1
4 19131610	Washer 13/32 x 3/4 x 10 Ga.
5 145006	Clip Push In Hinged
6 STD541437	Nut Hex Lock w/lns 3/8-16 unc
7 124181X	Spring Seat Cprsn 2 250 Blk Zi
8 17000616	Screw 3/8-16 x 1
9 19131614	Washer 13/32 x 1 x 14 Ga.
10 195530	Pan Pnt Seat (blk)
11 166369	Knob Seat Adj Wingnut
12 174648	Bracket Pnt Mounting Switch
13 121248X	Bushing Snap Blk Nyl 50 Id

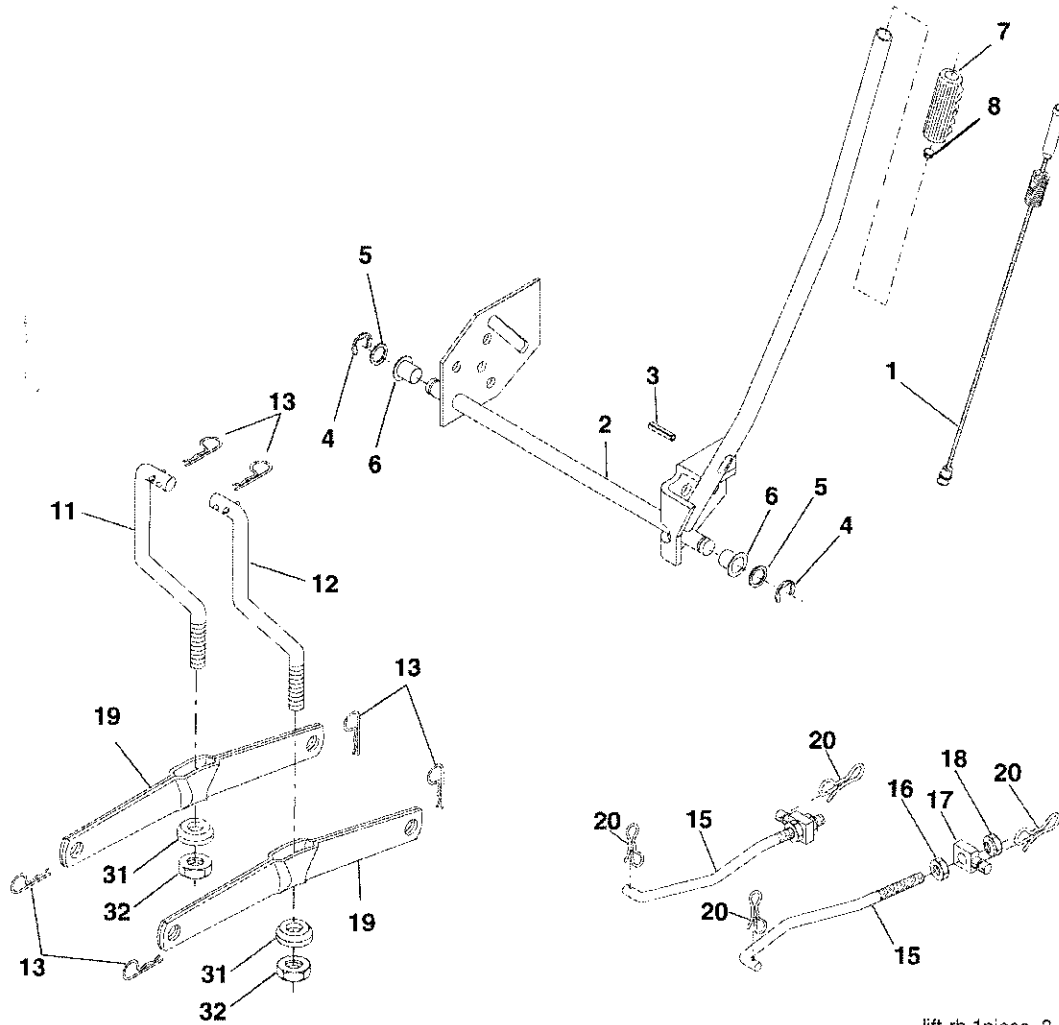
KEY PART NO. NO.

KEY PART NO. NO.	DESCRIPTION
14 72050412	Bolt Rdhd Sht Nk 1/4-20 x 1-1/2
15 134300	Spacer Split 28 x 96 Zinc
16 121250X	Spring Cprsn 1 27 Blk Pnt
17 123976X	Nut Lock 1/4 Lge Fig Gr. 5 Zinc
21 171852	Bolt Shoulder 5/16-18 unc-2A
22 STD541431	Nut Hex Lock w/lns 5/16-18
24 19171912	Washer 17/32 x 1-3/16 x 12 Ga.
25 127018X	Bolt Shoulder 5/16-18

NOTE: All component dimensions given in U.S. inches
1 inch = 25.4 mm

TRACTOR- -MODEL NO. 917.256720

LIFT ASSEMBLY



lift-rh.1piece_3

**KEY PART
NO. NO.**

KEY PART NO. NO.	DESCRIPTION
1 159460	Washer Asm Inner Spring W/ Plunger
2 159471	Shaft Asm. Lift
3 105767X	Pin Groove
4 12000002	E Ring #5133-62
5 19211621	Washer 21/32 x 1 x 21 Ga.
6 120183X	Bearing Nylon
7 125631X	Grip Handle Fluted
8 122365X	Button Plunger Read
11 139865	Link Asm Lift L.H.
12 139866	Link Asm Lift R.H.

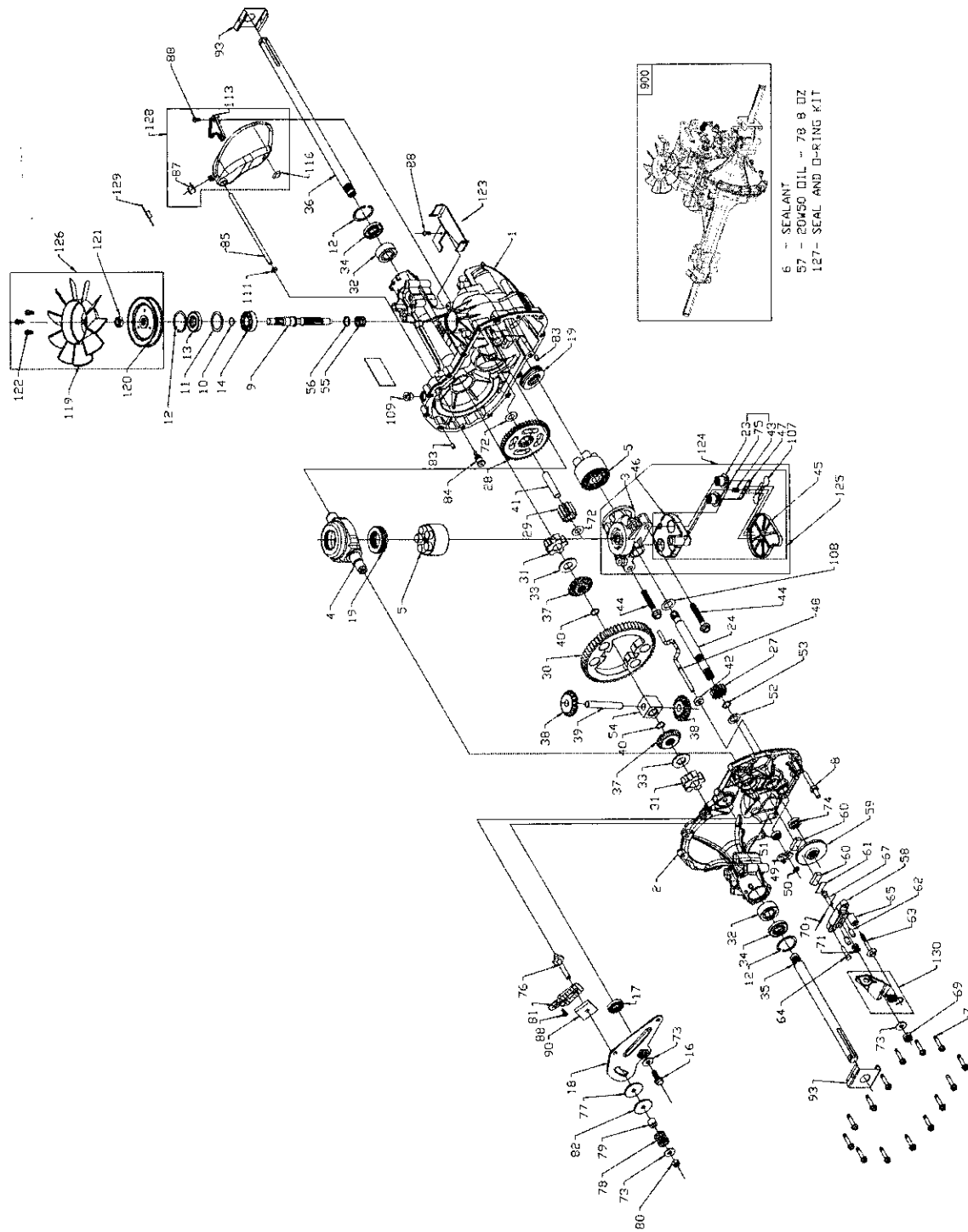
**KEY PART
NO. NO.**

KEY PART NO. NO.	DESCRIPTION
13 STD624008	Retainer Spring
15 173288	Link Front
16 73350800	Nut Jam Hex 1/2-13 unc
17 175689	Trunnion Blk Zinc
18 73800800	Nut Lock w/Wsh 1/2-13 unc
19 139868	Arm Suspension Mower
20 194209	Pin Cotter 7/16 Bow Tie Lock
31 169865	Bearing, Pvt. Lift
32 73540600	Nut Crownlock 3/8-24

NOTE: All component dimensions given in U.S. inches
1 inch = 25.4 mm

TRACTOR - - MODEL NO. 917.256720

HYDRO TRANSAXLE - - MODEL NUMBER 322-0510



TRACTOR- -MODEL NO. 917.256720

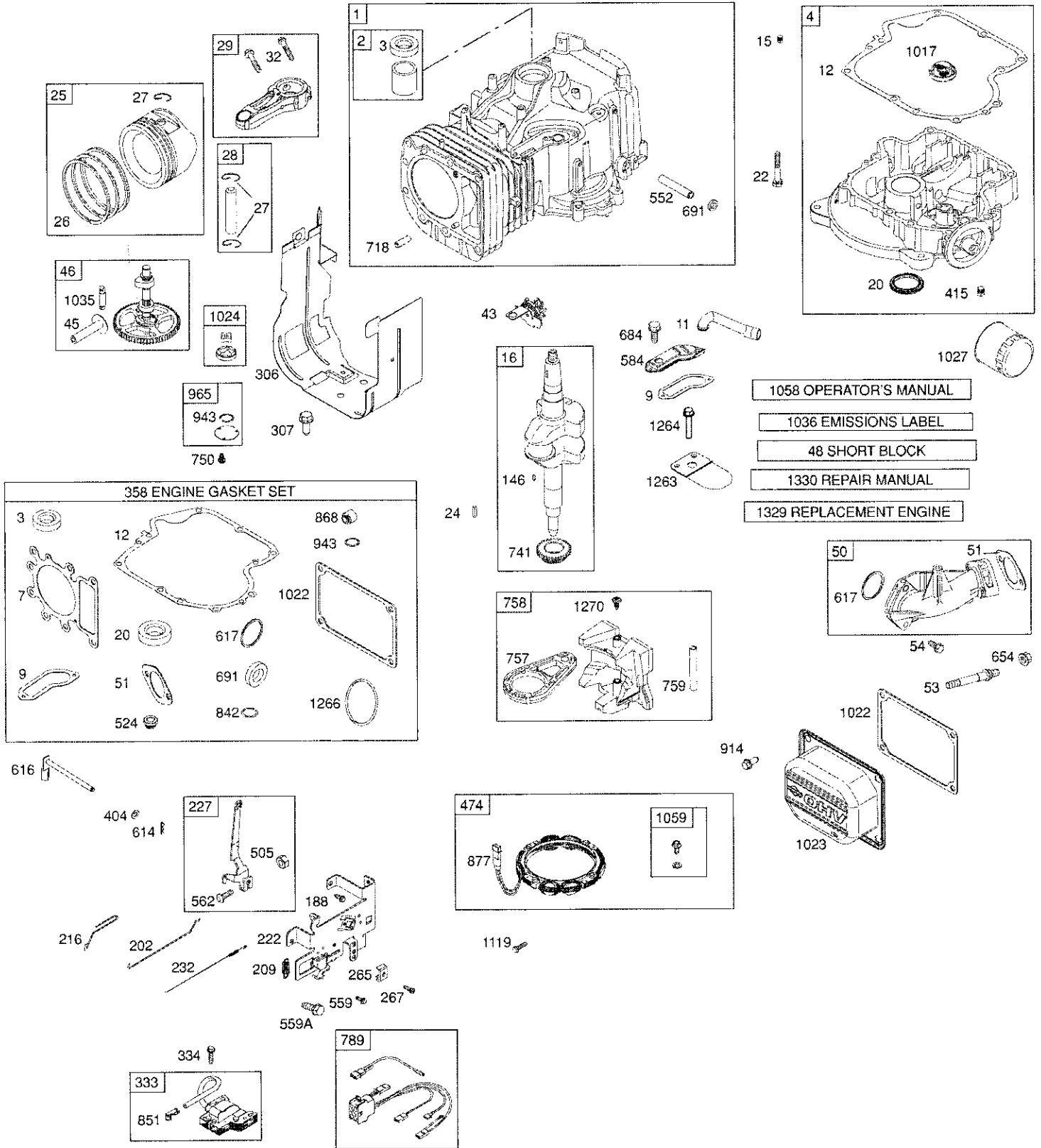
HYDRO TRANSAXLE - - MODEL NUMBER 322-0510

KEY PART NO. NO.	DESCRIPTION	KEY PART NO. NO.	DESCRIPTION
1 170351	Kit, Main Housing	67 170413	Bolt, Square Head - Brake
	Main Housing, Machined	69 170415	Nut, Castle 5/16-24
	Bushing .865 X .985 X .790	70 170416	Pin, Cotter 3/32x3/4
2 170352	Kit, Side Housing	71 170417	Brake Spring
	Side Housing, Machined	72 170418	Washer (310-0750)
	Bushing .865 X .985 X .790	73 142884	Washer, Flat
	Bushing .624 X .719 X .562	74 170419	Seal, Oil
3 170353	Kit, Center Section	75 170420	Ass'y Check Plug
	Center Section, Machined	76 170421	Bolt, Stud 5/16-24
	Bushing .707 X .788 X .591	77 170422	Puck, Friction
4 170354	Swashplate, Trunnion Machined	78 142969	Spring
5 169898	Kit, Cylinder Block (10cc)	79 142980	Spacer
	Block - Cylinder - Piston	80 150778	Nut, Nylon Insert Hex Lock 5/16-24
	Spring, Compression		Wedge, Friction
	Washer - Thrust	81 170423	Clip, Washer
6 178322	Sealant Tube	82 170424	Pin
7 170356	Hexflange Screw 1/4-20 X 1.25	83 161168	Fitting, 5/16 X Sae 5/32 Tube
8 170357	Stud, 5/16-24 Hex Double End	84 170425	Hose, Expansion Tank
9 170358	Shaft, Input	85 170426	Cap, Vent
10 170359	Retaining Ring	87 173160	Bolt, Self Tapping (BDR)
11 170360	Spacer	88 178334	Puck, Inner Wedge
12 169870	Retaining Ring	90 170430	Spring Clip, Housing
13 170361	Seal, Lip .67 X 1.58 X .276	93 170431	Deflector
14 173158	Bearing, Ball 6203 (BDR)	107 170432	Washer, Motor Shaft .71ID X 1.15OD X .03 Thick
16 170362	Hex Flange Head Screw 1/4-20 X 1.25	108 170433	Plug, Straight Thread 9/16-18
17 170363	Seal, Lip 18 X 32 X 7	109 170434	O-ring .7 X .301 ID
18 170364	Arm, Control	111 170435	Bracket, Support Expansion Tank
19 173159	Bearing, Thrust (10cc)	113 170437	Fan (310-3000)
23 170365	Check Plug Assembly	119 173161	Pulley
24 170366	Shaft Motor	120 170440	Hex Nut Locking
27 170367	Gear, Pinion, 13t	121 170441	Screw, #12-24 Hx Hd Self Tapping (310- 3000)
28 170368	10t / 48t Gear	122 173162	Bracket, Belt Keeper
29 170369	Gear, 10t Jackshaft		Kit, Center Section Filter Bypass
30 170370	60t Bullgear	123 173163	Center Section Machining
31 170371	Sleeve Bearing .75 X 1.75 X .625	124 170444	Base Filter W/ Poppet
32 170389	Sleeve Bearing (Outboard) .75 X 1.575 X .625		Check Plug Assembly, 027 Washer, Check Plug Assembly, Washer, Spring, Bypass
33 142991	Washer		Actuator, Bypass, Deflector
34 170390	Lip Seal, Axle Shaft		Bottom, Filter
35 170391	Shaft, Axle (Keyed, R.h.)		Bushing .707 X .788 X .591
36 170392	Shaft, Axle (Keyed, L.h.)		Kit, Filter
37 150792	Gear, Splined Diff. (210-1000 & 310-0750)	125 170445	Bottom, Filter, Spring, Bypass
38 150793	Gear, Miter Diff. (210-1000 & 310-0750)		Actuator, Bypass, Deflector
39 150809	Differential Shaft (310-0750)		Base, Filter W/ Poppet
40 170393	Retaining Ring		Kit, Fan / Pulley
41 170394	Pin, Jackshaft	126 173164	#12 T.f. Screw - Indented Hex Washer Head, Fan
42 170395	Magnet, Ring		Pulley 4.315 X .801
43 170396	Spring, Bypass		Kit, Seal
44 150797	Bolt 3/8-24 X 2-1/2	127 170447	Lip Seal .67 X 1.58 X .276
45 170397	Filter		Lip Seal 18 X 32 X 7
46 170398	Base, Filter		Lip Seal .706 X 1.584 X .25
47 170399	Actuator, Bypass		Lip Seal .741 X .250 X .250 TC
48 170400	Rod, Bypass Actuator		Oil Seal 625 X 1.0 X .25
49 170401	Arm, Bypass		O-ring .07 X .301 ID
50 170402	Retaining Ring .25 External		Kit, Expansion Tank
51 170403	Seal, Lip .741 X .25 X .25		Tank, Expansion, Cap, Vent
52 170404	Washer, Flat 0.050" (210-1000)	128 173165	Bolt, Self Tapping 10-32 X 1/2
53 170405	Retaining Ring		Bracket, Support Expansion Tank
54 170406	Bearing, Center Block		Silicon Sponge 1/2 X 1/2 X 3/16
55 142977	Spring, Helical Compression		Cap, Expansion Tank Shipping
56 142978	Washer, Block Thrust	129 191032	Kit, Brake Arm And Spring
57 - - - -	20w-50 Oil 78.8 Oz	130 186352	Arm, Brake, Spring, Brake Arm Bias, In- struction Sheet
58 142929	Kit, Brake Yoke		Transaxle
59 170408	Rotor, Brake		
60 142883	Brake Puck		
61 142882	Brake Puck Plate	900 171613	
62 170409	Pin, Brake Actuating		
63 170410	HFHCS 1/4-20 X 2 W/patch, Special Flange		
64 142892	Bolt, Nylok		
65 170411	Spacer, Brake Torsion Spring		

NOTE: All Component Dimensions Given In U.s.
Inches 1 Inch = 25.4 MM

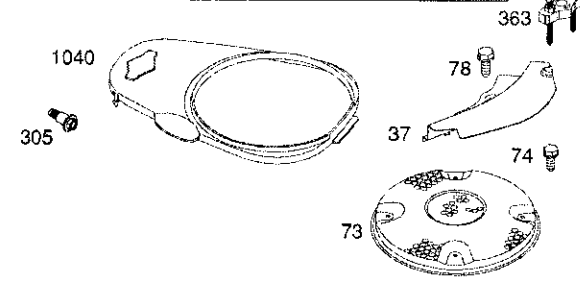
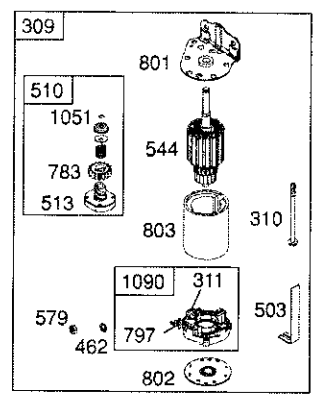
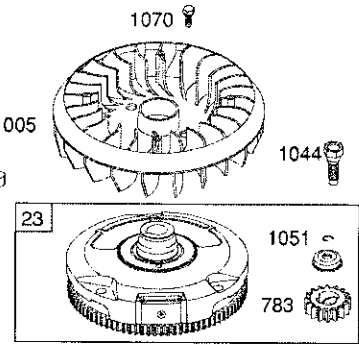
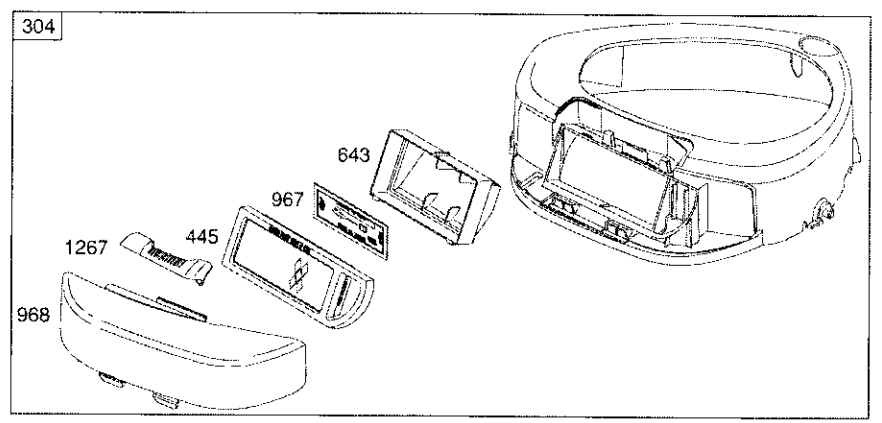
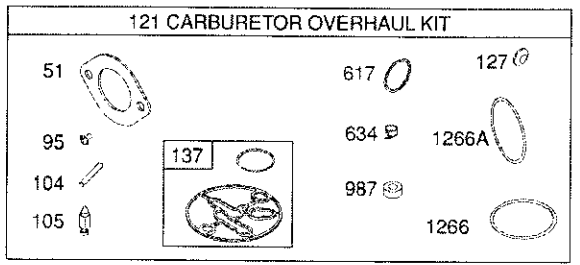
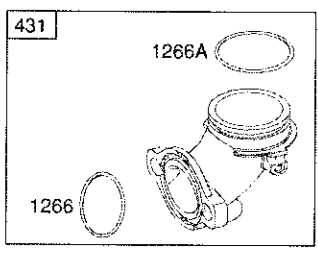
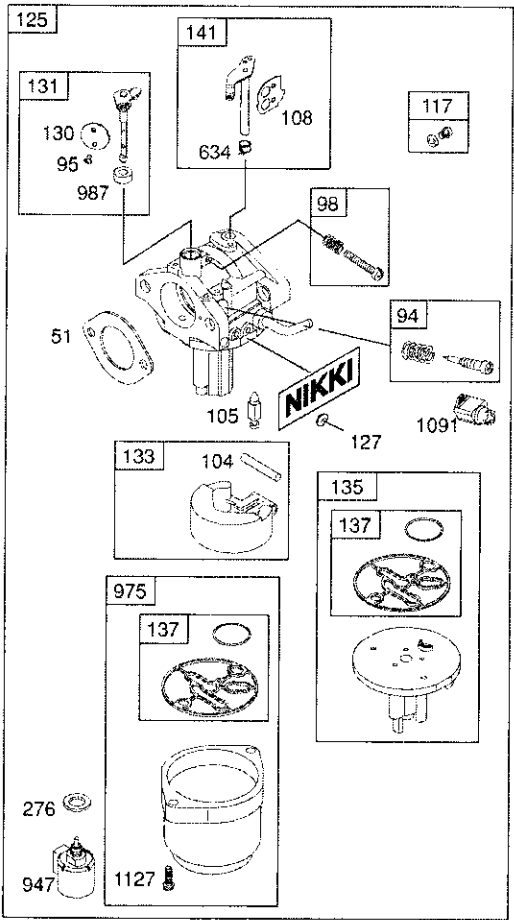
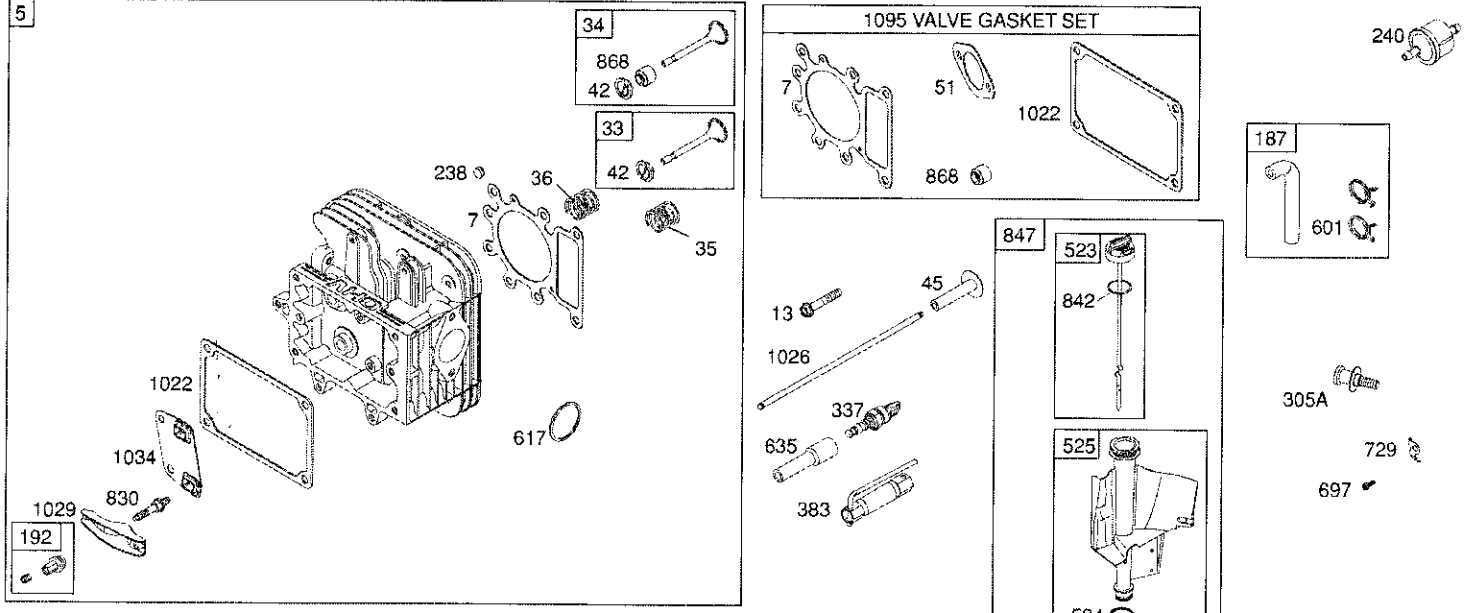
TRACTOR- -MODEL NO. 917.256720

BRIGGS & STRATTON ENGINE - MODEL NUMBER 31P977, TYPE NUMBER 0881-B1



TRACTOR--MODEL NO. 917.256720

BRIGGS & STRATTON ENGINE - MODEL NUMBER 31P977, TYPE NUMBER 0881-B1



TRACTOR- -MODEL NO. 917.256720

BRIGGS & STRATTON ENGINE - MODEL NUMBER 31P977, TYPE NUMBER 0881-B1

KEY NO.	PART NO.	DESCRIPTION	KEY NO.	PART NO.	DESCRIPTION
1	793987	Cylinder Assembly	216	691840	Link-Choke
2	399265	Kit-Bushing/Seal (Magneto Side)	222	694042	Bracket-Control
3	391086s	• Seal-Oil (Magneto Side)	227	691374	Lever-Governor Control
4	697188	Sump-Engine	232	691842	Spring-Governor
5	793991	Head-Cylinder	238	691843	Cap-Valve
7	699168	•+ Gasket-Cylinder Head	240	394358s	Filter-Fuel
9	697109	• Gasket-Breather	265	691024	Clamp-Casing
11	697113	Tube-Breather	267	792629	Screw (Casing Clamp)
12	697110	• Gasket-Crankcase	276	695410	Ø Washer-Sealing
13	793988	Screw (Cylinder Head)	304	698599	Housing-Blower
15	690946	Plug-Oil Drain	305	697102	Screw (Blower Housing)
16	697127	Crankshaft	305A	793376	Screw (Blower Housing)
20	791892	• Seal-Oil (PTO Side)	306	697107	Shield-Cylinder
22	692125	Screw (Crankcase Cover/Sump)	307	691003	Screw (Cylinder Shield)
23	693557	Flywheel	309	693551	Motor-Starter
24	222698s	Key-Flywheel	310	690323	Bolt (Starter Motor)
25	791937	Piston Assembly (Standard)	311	497608	Brush Set
	793019	Piston Assembly (.020" Oversize)	333	492341	Armature-Magneto
26	791936	Ring Set (Standard)	334	691061	Screw (Magneto Armature)
	792649	Ring Set (.020" Oversize)	337	691043	Plug-Spark
27	698469	Lock-Piston Pin	358	697191	Gasket Set-Engine
28	697099	Pin-Piston	363	19203	Flywheel Puller
29	791631	Rod-Connecting	383	89838s	Wrench-Spark Plug
32	791118	Screw (Connecting Rod)	404	691691	Washer (Governor Crank)
33	791934	Valve-Exhaust	415	690283	Plug
34	791935	Valve-Intake	431	697122	Elbow-Intake
35	691279	Spring-Valve (Intake)	445	698083	Filter-Air Cleaner Cartridge
36	691279	Spring-Valve (Exhaust)	462	691261	Washer (Starter Cable)
37	697352	Guard-Flywheel	474	696459	Alternator
42	499586	Retainer-Valve	503	691532	Strap-Starter
43	691968	Slinger-Governor/Oil	505	691251	Nut (Governor Control Lever)
45	690564	Tappet-Valve	510	693699	Drive-Starter
46	793880	Camshaft	513	692024	Clutch-Drive
48	697762	Short Block	523	699908	Dipstick
50	690193	Manifold-Intake	524	691032	• Seal-Dipstick Tube
51	692137	•Ø+ Gasket-Intake	525	697184	Tube-Dipstick
53	690227	Stud (Carburetor)	544		Starter-Armature
54	691148	Screw (Intake Manifold)			(For service order complete Starter Motor, reference 309)
73	697133	Screen-Rotating	552	697144	Bushing-Governor Crank
74	697897	Screw (Rotating Screen)	559	697561	Screw (Remote Choke Stop)
78	691003	Screw (Flywheel Guard)	559A	693675	Screw (Remote Choke Stop)
94	793610	Kit-Idle Mixture	562	691119	Bolt (Governor Control Lever)
95	690718	Ø Screw (Throttle Valve)	579	691029	Nut (Starter Cable)
98	695408	Kit-Idle Speed	584	697112	Cover-Breather Passage
104	694918	Ø Pin-Float Hinge	601	791850	Clamp-Hose
105	696136	Ø Valve-Float Needle	614	691620	Pin-Cotter
108	695419	Valve-Choke	616	692012	Crank-Governor
117	792296	Jet-Main (Standard)	617	692138	Ø • Seal-O Ring (Intake Manifold)
121	792369	Kit-Carburetor Overhaul	634	698779	Ø Spring/Seal Assembly (Choke A Matic)
125	792768	Carburetor	635	691909	Boot-Spark Plug
127	690727	Ø Plug-Welch	643	698401	Retainer-Air Filter
130	792747	Valve-Throttle	654	690958	Nut (Carburetor)
131	792765	Kit-Throttle Shaft			
133	694914	Float-Carburetor			
135	698780	Tube-Fuel Transfer			
137	698781	Ø Gasket-Float Bowl			
141	792777	Kit-Choke Shaft			
146	691639	Key-Timing			
187	791805	Line-Fuel			
188	691693	Screw (Control Bracket)			
192	691986	Adjuster-Rocker Arm			
202	691841	Link-Mechanical Governor			
209	692208	Spring-Governor			

- Included in Engine Gasket Set, Key. No. 358
- Ø Included in Carburetor Overhaul Kit, Key. No. 121
- + Included in Valve Gasket Set, Key. No. 1095

NOTE: All component dimensions given in U.S. inches
1 inch = 25.4 mm

TRACTOR- -MODEL NO. 917.256720
BRIGGS & STRATTON ENGINE - MODEL NUMBER 31P977, TYPE NUMBER 0881-B1

KEY NO.	PART NO.	DESCRIPTION	KEY NO.	PART NO.	DESCRIPTION
684	697157	Screw (Breather Passage Cover)	1029	691751	Arm-Rocker
691	692407	• Seal-Governor Shaft	1034	690822	Guide-Push Rod
697	690372	Screw (Drive Cap)	1035	693784	Shaft-Pump
718	690959	Pin-Locating	1036		Label-Emissions (Available from a Briggs & Stratton authorized Service Dealer)
729	691224	Clip-Wire			Plate-Trim
741	697128	Gear-Timing	1040	699852	Screw (Flywheel)
750	790832	Screw (Oil Pump Cover)	1044	698139	Ring-Retaining
757	793242	Link-Counterweight	1051	691265	Operator's Manual
758	697134	Counterweight	1058	276344	Kit-Screw/Washer
759	697392	Pin-Counterweight	1059	698516	Screw (Flywheel Fan)
783	693713	Gear-Pinion	1070	690372	Retainer-Brush
789	698329	Harness-Wiring	1090	691293	Cap-Limiter
797	693167	Nut (Brush Retainer)	1091	691333	Gasket Set-Valve
801	691283	Cap-Drive	1095	690190	Screw (Alternator)
802	691286	Cap-End	1119	691183	Screw (Float Bowl)
803		Housing-Starter (For service order complete Starter Motor reference 309)	1127	695407	Reed-Breather
830	691095	Stud (Rocker Arm)	1263	697124	Screw (Breather Reed)
842	691031	• Seal-O Ring (Dipstick Tube)	1264	697104	Seal-O Ring (Intake Elbow)
847	790442	Dipstick/Tube Assembly	1266	691917	•∅ Seal-O Ring (Intake Elbow)
851	692424	Terminal-Spark Plug	1266A	697123	∅ Seal-O Ring (Intake Elbow)
868	690968	*+ Seal-Valve	1267	697419	Latch-Blower Housing
877	393456	Wire/Connector-Alternator	1270	793243	Plug-AVS Counterweight
914	691108	Screw (Rocker Cover)	1329	31P977-0036	Replacement Engine (Transfer the speed limiter control assembly to the replacement engine. Transfer governor spring to the replacement engine. Remove 691840.) Repair Manual
943	690589	• Seal-O Ring (Oil Pump Cover)			
947	699915	Solenoid-Fuel			
965	499613	Cover-Oil Pump	1330	272147	
967	697015	Filter-Pre Cleaner			
968	698403	Cover-Air Cleaner			
975	699502	Bowl-Float			
987	698777	∅ Seal-Throttle Shaft			
1005	699043	Fan-Flywheel			
1017	690770	Screen-Oil Pump			
1022	272475s	*+ Gasket-Rocker Cover			
1023	791079	Cover-Rocker Arm			
1024	499054	Pump-Oil			
1026	692003	Rod-Push (Intake)			
	692011	Rod-Push (Exhaust)			
1027	492932s	Filter-Oil			

- Included in Engine Gasket Set, Key. No. 358
- ∅ Included in Carburetor Overhaul Kit, Key. No. 121
- + Included in Valve Gasket Set, Key. No. 1095

NOTE: All component dimensions given in U.S. inches
1 inch = 25.4 mm

LIMITED WARRANTY ON CRAFTSMAN RIDING EQUIPMENT

For two (2) years from the date of purchase, if this Craftsman Riding Equipment is maintained, lubricated and tuned up according to the instructions in the owner's manual, Sears will repair or replace free of charge any parts that are found to be defective in material or workmanship according to the guidelines of coverage listed below. Sears will also provide free labor for these applicable warranted parts for the two full years. During the first 30 days of purchase, there will be no charges to service the product at your home for issues covered by this warranty. (See exclusions below). For your convenience, IN HOME warranty service will still be available after the first 30 days of purchase, but a trip charge will apply. This charge will be waived if the Craftsman product is dropped off at an authorized Sears location. For the nearest authorized Sears location, please call 1-800-4-MY-HOME®. This warranty applies only while this product is within the United States.

This Warranty does not cover:

- Expendable items which become worn during normal use, including but not limited to blades, spark plugs, air cleaners, belts, and oil filters.
- Standard Maintenance Servicing, oil changes, or tune-ups
- Tire replacement or repair caused by punctures from outside objects, such as nails, thorns, stumps, or glass.
- Repairs necessary because of operator abuse, including but not limited to, damage caused by towing objects beyond the capability of the riding equipment, impacting objects that bend the frame or crankshaft, or over-speeding the engine.
- Repairs necessary because of operator negligence, including but not limited to, electrical and mechanical damage caused by improper storage, failure to use the proper grade and amount of engine oil, failure to keep the deck clear of flammable debris, or failure to maintain the equipment according to the instructions contained in the owner's manual.
- Engine (fuel system) cleaning or repairs caused by fuel determined to be contaminated or oxidized (stale). In general, fuel should be used within 30 days of its purchase date.
- Normal deterioration and wear of the exterior finishes, or product label replacement.
- Riding equipment used for commercial or rental purposes.

LIMITED WARRANTY ON BATTERY

For ninety (90) days from date of purchase, if any battery included with this riding equipment proves defective in material or workmanship and our testing determines the battery will not hold a charge, Sears will replace the battery at no charge. During the first 30 days of purchase, there will be no charges to replace the battery at your HOME. After the first 30 days, for your convenience, IN-HOME warranty service will still be available but a trip charge will apply. This charge will be waived if the Craftsman product is dropped off at an authorized Sears location. For the nearest authorized Sears location, please call 1-800-4-MY-HOME®.

This battery warranty applies only while this product is within the United States.

This warranty gives you specific legal rights, and you may also have other rights, which vary, from state to state.

Sears, Roebuck and Co., Hoffman Estates, IL 60179

