

REPAIR PARTS MANUAL
MODEL NO. 256780
Lawn Tractor



HOW TO USE THIS MANUAL

This manual is designed to provide the customer with a means to identify the parts on his/her tractor when ordering repair parts. The illustrations may or may not represent the actual assemblies; therefore, it is not recommended to use this manual as a guide to assemble or disassemble the tractor. Some hardware and parts are drawn larger in order to more readily identify them.

Each tractor has its own model number.

The model number for your tractor can be found on the fender under the seat.

When ordering parts, always give the following information:

- Product - "Tractor"
- Model Number - 256780
- Part Number
- Part Description

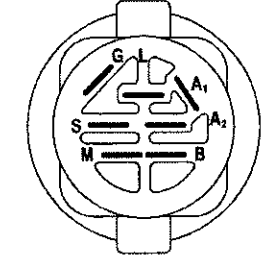
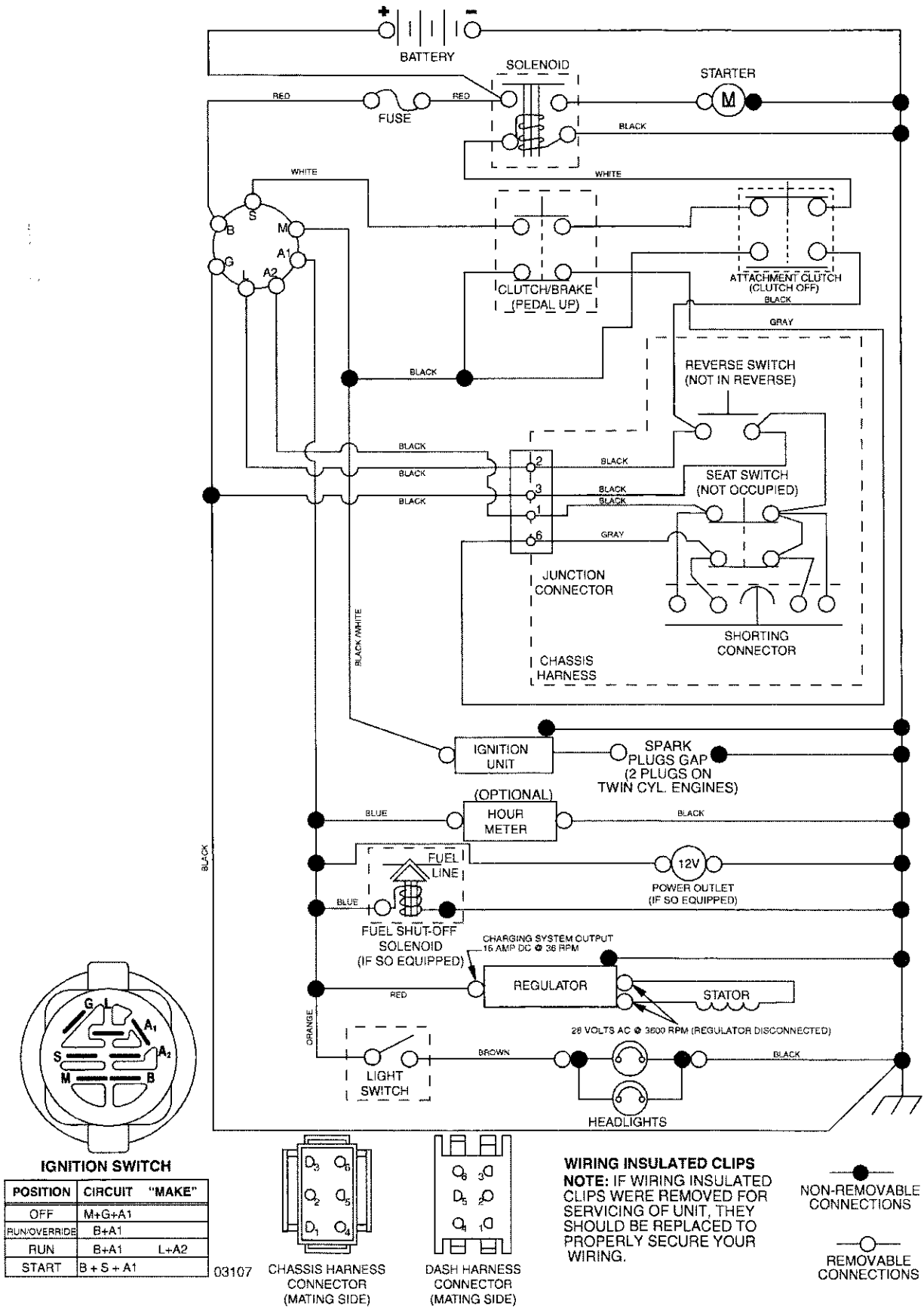
TABLE OF CONTENTS

SCHEMATIC	3
ELECTRICAL.....	4-5
CHASSIS	6-7
DRIVE.....	8-9
STEERING	10
SEAT	11
ENGINE.....	12-13
MOWER DECK.....	14-15
DECALS.....	16
MOWER LIFT.....	17
ENGINE BREAKDOWN.....	18-21
WARRANTY.....	BACK COVER

TRACTOR - - MODEL NUMBER 256780

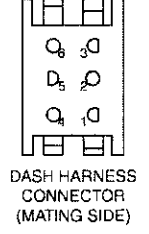
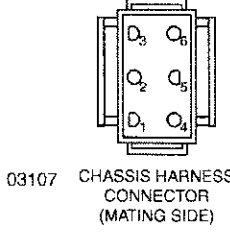
SCHEMATIC

03107-194276-400449_Manual-Tex



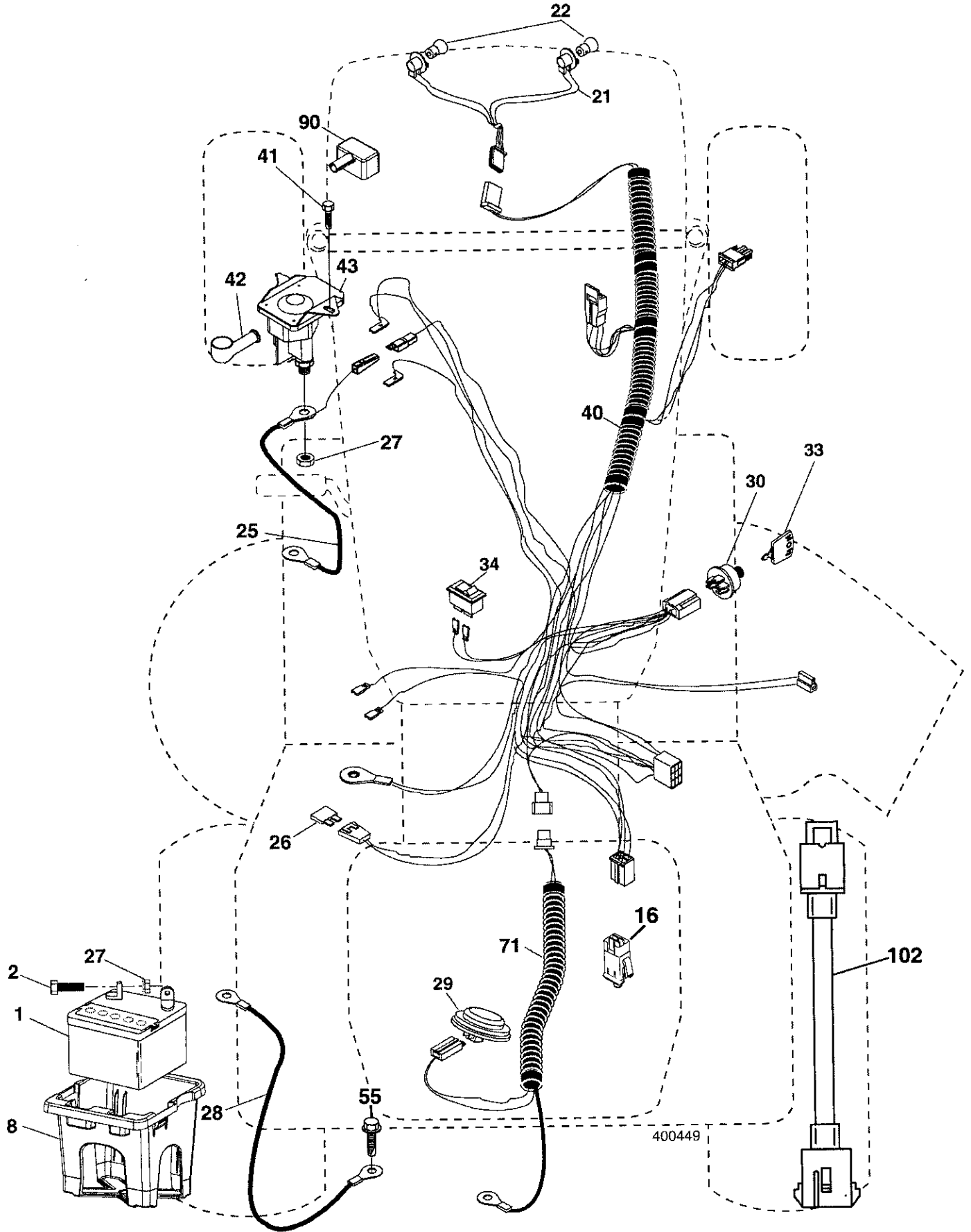
IGNITION SWITCH

POSITION	CIRCUIT	"MAKE"
OFF	M+G+A1	
RUN/OVERRIDE	B+A1	
RUN	B+A1	L+A2
START	B + S + A1	



TRACTOR -- MODEL NUMBER 256780

ELECTRICAL



TRACTOR - - MODEL NUMBER 256780

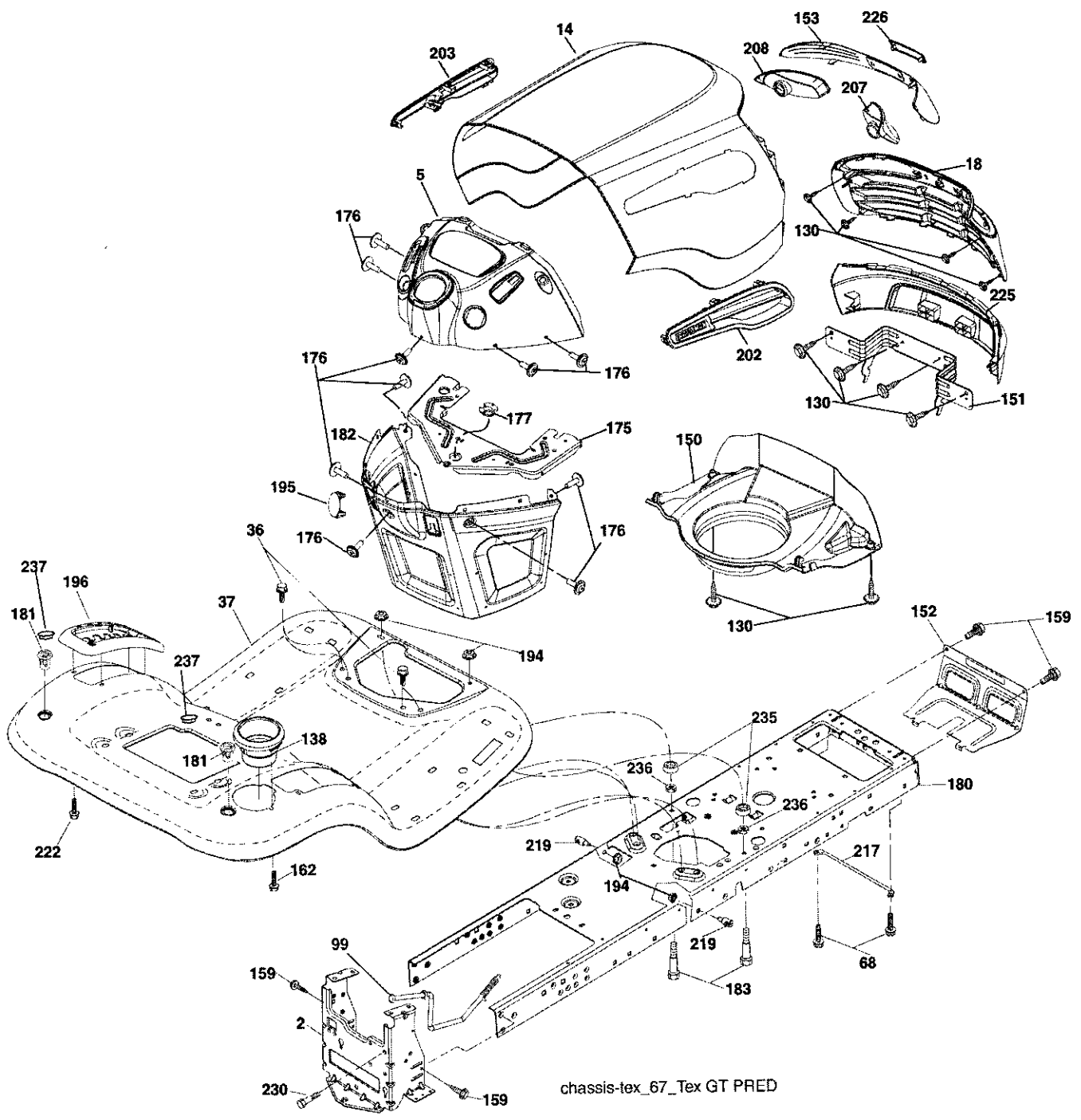
ELECTRICAL

KEY NO.	PART NO.	DESCRIPTION
1	163465	Battery
2	74760412	Bolt Hex Head 1/4-20 x 3/4
8	193228	Box Battery
16	176138	Switch Interlock Push-In
21	400252	Harness Socket Light W/4152J
22	4152J	Bulb
25	198893	Cable Battery
26	175158	Fuse
27	STD541425	Nut Keps Hex 1/4-20 unc
28	198885	Cable, Ground
29	401545	Switch, Seat
30	193350	Switch, Ignition
33	140403	Key, Ignition
34	110712X	Switch Light / Reset
40	401098	Harness Ignition Dash
41	17720408	Screw Thd Cut 1/4-20 x 1/2
42	131563	Cover, Terminal
43	192507	Solenoid
55	17060512	Screw 5/16-18 x 3/4
71	400449	Harness Chassis
79	175242	Socket Asm. Bulb
90	400725	Cover Terminal Battery
102	404454	Harness Pigtail

NOTE: All component dimensions give in U.S. inches
1 inch = 25.4 mm

TRACTOR - - MODEL NUMBER 256780

CHASSIS AND ENCLOSURES



chassis-tex_67_Tex GT PRED

TRACTOR - - MODEL NUMBER 256780

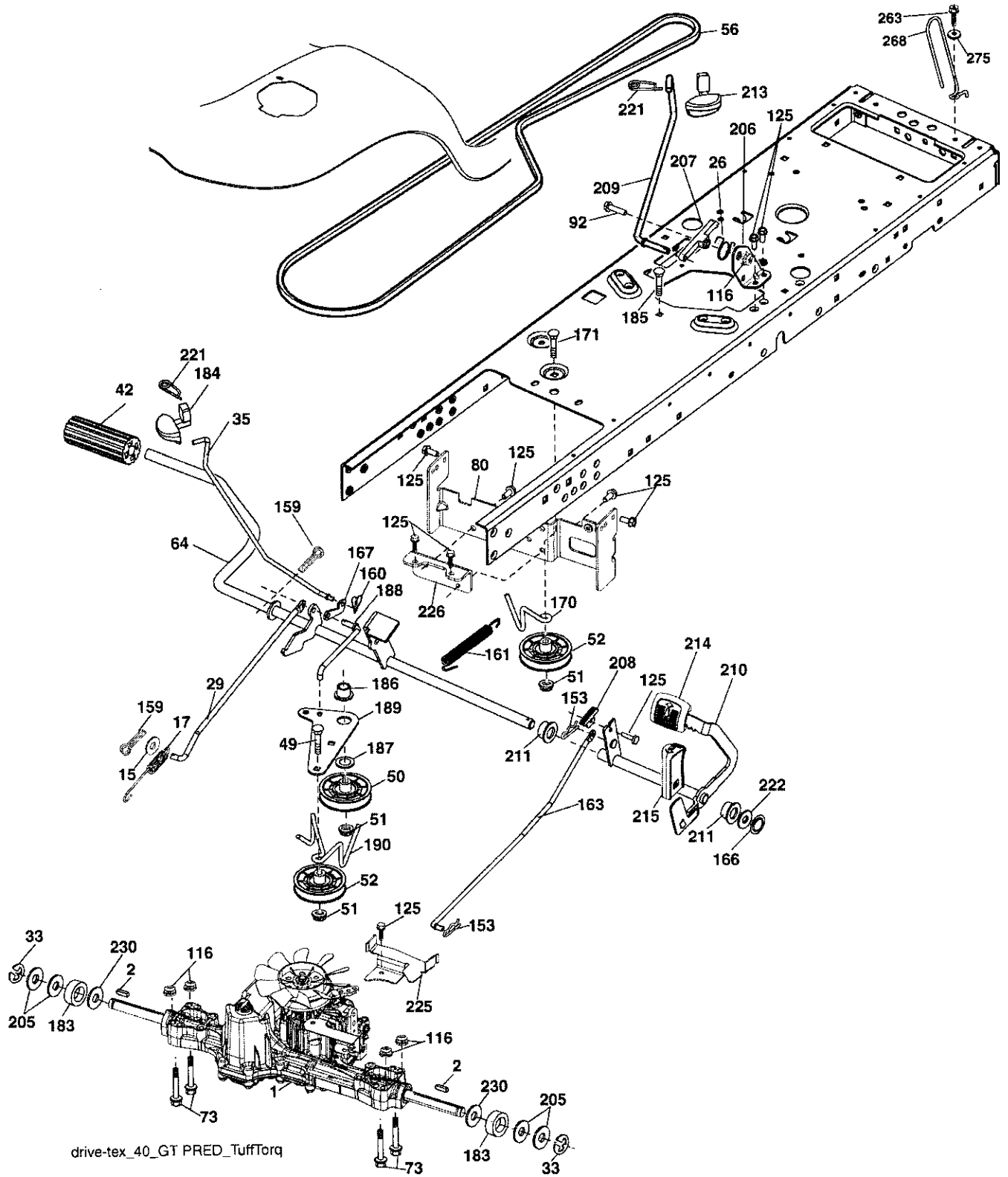
CHASSIS AND ENCLOSURES

KEY NO.	PART NO.	DESCRIPTION	KEY NO.	PART NO.	DESCRIPTION
2	194263	Drawbar	182	194787	Dash Lower
5	199674X428	Dash	183	STD523112	Bolt Fin Hex 5/16-18 x 1-1/4
14	404654X615	Hood	194	73900500	Nut Lock Hex Flange 5/16-18
18	404624	Grille Asm (Includes Key Nos. 153, 207, 208 and 226)	195	401556X428	Plug Dash
36	17060512	Screw 5/16-18 x 3/4	196	196378X428	Console Asm. Deck Lift
37	402969X615	Fender	202	198968X428	Vent Side Hood RH
68	17490508	Screw Thdrol 5/16-18 x 1/2	203	198969X428	Vent Side Hood LH
99	405903	Rod Bypass Asm	207	198963	Bezel RH
130	191611	Screw 10 x 3/4 Single Lead-Hex	208	198964	Bezel LH
138	193224X428	Cupholder	217	409167	Rod Pivot Chassis
150	199413	Duct Heat Hood	219	195161	Stud Fastener
151	196332	Bracket Pivot	222	137729	Screw thd Roll 1/4-20 x 5/8
152	194329	Shield Browning/Debris	225	198962X615	Bumper
153	198965	Lens	226	198967X428	Logo
159	17000612	Screw Hexwsh Thdrol 3/8-16 x 3/4	230	170165	Bolt Shoulder 5/16-18
162	142432	Screw Hex Wsh Hi-Lo 1/4 x 1/2 unc	235	406129	Spacer Fender
175	196304	Crossmember	236	73930500	Nut Lock 5/16-18 unc
176	400776	Screw 10-24 x 5/8 Wshd Qdrx	237	403704	Plug Mount Cargo
177	195227	Bushing Steering	--	404951X428	Plug Dash
180	194260	Chassis			
181	193102X428	Bushing Mtg. Fender Crgo.			

NOTE: All component dimensions given in U.S. inches.
1 inch = 25.4 mm

TRACTOR -- MODEL NUMBER 256780

DRIVE



TRACTOR - - MODEL NUMBER 256780

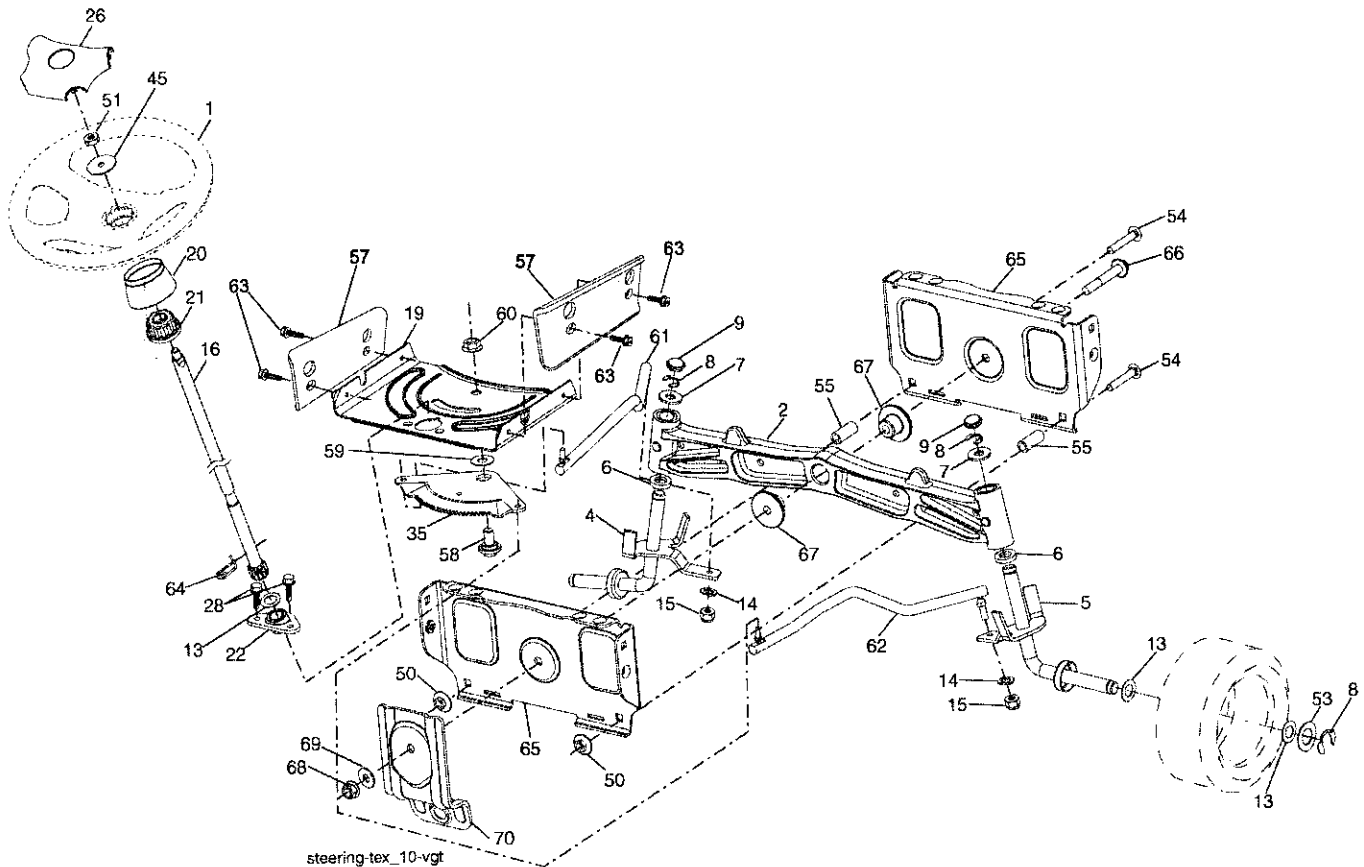
DRIVE

KEY NO.	PART NO.	DESCRIPTION	KEY NO.	PART NO.	DESCRIPTION
1	-----	Transaxle, TUFF TORQ K46	186	194321	Spacer Retainer
2	123583X	Key	187	19133210	Washer
15	19131316	Washer 13/32 x 13/16 x 16 Ga.	188	194323	Link Clutch Ground Drive
17	401072	Spring, Brake	189	194317	Bellcrank Ground Drive
26	199679	Spring Return Cruise	190	194318	Keeper Bellcrank Ground Drive
29	403806	Rod, Brake	205	121748X	Washer
33	12000001	Ring E	206	197867	Bracket Mount Latch Cruise
35	199591	Rod, Brake, Park	207	197868	Latch Control Cruise
42	8883R	Cover, Foot Pedal	208	197869	Bolt Sector Control Cruise
49	72110614	Bolt	209	199592	Rod Control Cruise
50	194327	Pulley Idler Flat	210	400980	Rocker Asm. Pedal Control
51	73900600	Lock Nut 3/8-16	211	120183X	Bearing, Nylon
52	194326	Idler V-Groove 910" Offset	213	196441X428	Knob Control Cruise
56	130969	V-Belt, Drive	214	197302X428	Pad Pedal Forward
64	197865	Shaft Asm. Pedal Brake Control	215	197301X428	Pad Pedal Reverse
73	74490544	Bolt Hex Flghd 5/16-18 Gr. 5	221	403187	Retainer Spring Clip Handle
80	404483	Strap Torque	222	79212010	Washer
92	74760520	Bolt Fin Hex 5/16-18 unc x 1.25	225	403319	Keeper Belt Trans.
116	73900500	Nut Lock Hex Flange 5/16-18	226	401564	Bracket Mount Torque
125	17000512	Screw 5/16-18 x 3/4	230	188967	Washer Hardened
153	4497H	Retainer Spring	263	17000612	Screw Hexwsh Thdrol 3/8-16 x 3/4
159	76020412	Pin Cotter 1/8 x 3/4	268	182402	Guard Muffler
160	169484	Retainer Clip	275	19131614	Washer 13/32 x 1 x 14
161	195403	Spring, Return, Clutch			
163	401034	Rod Pedal Control			
166	197290	Nut, Push			
167	405257	Latch Brake Parking			
170	194322	Keeper Belt Centerspan			
171	72110616	Bolt			
183	137057	Spacer Split			
184	196439X505	Handle Parking Brake			
185	72110620	Bolt			

NOTE: All component dimensions given in U.S. inches.
1 inch = 25.4 mm

TRACTOR - - MODEL NUMBER 256780

STEERING ASSEMBLY

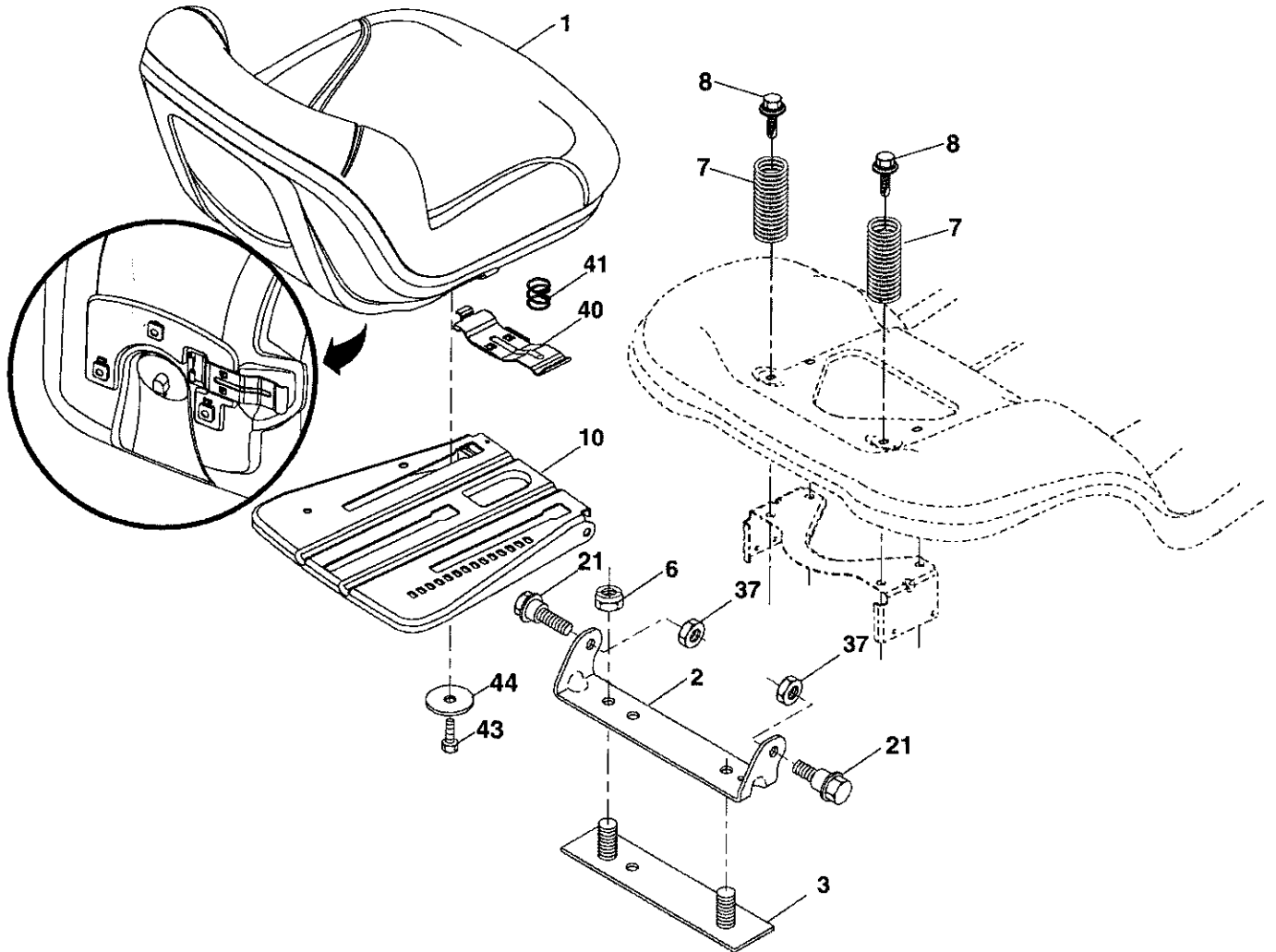


KEY NO.	PART NO.	DESCRIPTION	KEY NO.	PART NO.	DESCRIPTION
1	186093X428	Wheel, Steering	53	188967	Washer Hardened .793x 1.637x .060
2	195968	Axle Asm., Front	54	STD523722	Bolt Hex 3/8-16 UNC x 2-1/4
4	403087	Spindle Asm., LH	55	197636	Spacer Brace Axle
5	403088	Spindle Asm., RH	57	407465	Bracket Upstop
6	6266H	Bearing, Race Thrust Harden	58	194747	Bolt Shoulder Sector Pivot CFM
7	121748X	Washer 25/32 x 1-5/8 x 16 Ga.	59	194748	Washer Thrust Sector Steering
8	12000029	Ring, Klip #T5304-75	60	73971000	Nut Flange Lock 5/8-11
9	184946X505	Cap, Spindle	61	194740	Draglink LH
13	121749X	Washer 25/32 x 1-1/4 x 16 Ga.	62	194741	Draglink, RH
14	STD551137	Washer, Lock Hvy Hlcl Spr 3/8	63	17000512	Screw 5/16-18 x 3/4
15	73540600	Nut, Crown Lock 3/8-24 unf	64	199849	Retainer Clip Spring Steering
16	194746	Shaft Steering	65	194734	Brace Axle Front
19	194729	Plate Steering	66	71020748	Bolt Hex Fghd 7/16-14 x 3 Serr
20	199676X428	Boot, Steering	67	194737	Bushing PM Front Axle
21	186737	Adapter, Wheel Steering	68	73900700	Nut Lock Flange 7/16-14 Gr. 5
22	194845	Bushing, Strg. Blk	69	199162	Washer 1.5 x .505 x .118
26	186095X428	Insert, Wheel Steering	70	196197	Bracket Deck Susp. Front
28	17000612	Screw 3/8-16 x 3/4			
35	194732	Gear, Sector Plate			
45	19183812	Washer 9/16 x 2-3/8 x 12 Ga.			
50	73900600	Nut Lock 3/8-16 UNC			
51	STD541350	Nut Hex Jam Toplock 1/2-20 unf			

NOTE: All component dimensions given in U.S. inches.
1 inch = 25.4 mm

TRACTOR -- MODEL NUMBER 256780

SEAT ASSEMBLY



seat-tex_7-vgt

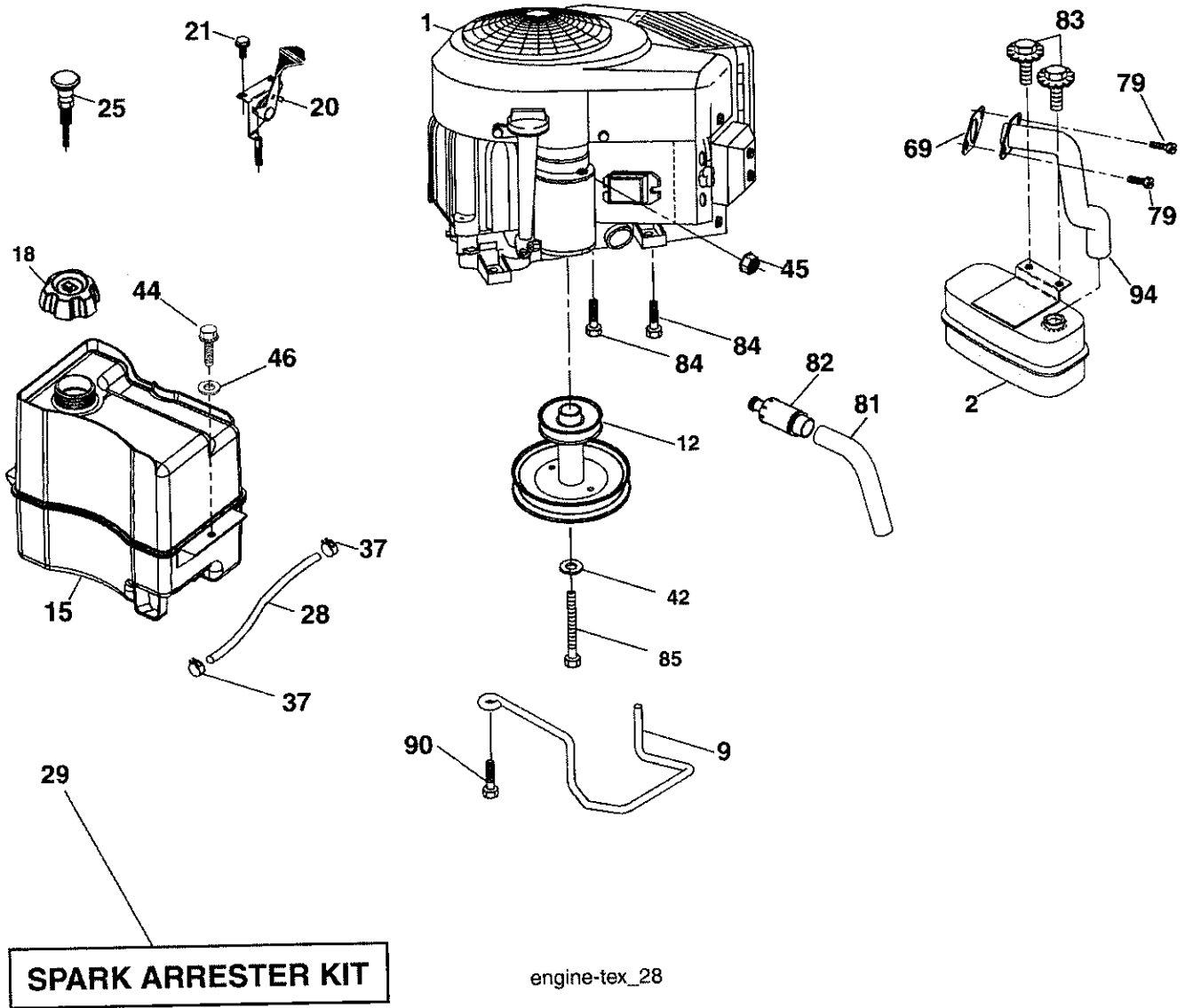
KEY NO.	PART NO.	DESCRIPTION
1	197520	Seat
2	180166	Bracket Pivot Fender
3	140675	Strap, Asm Fender
6	STD541437	Nut, Lock W/Ins. 3/8-16 unc
7	124181X	Spring, Seat Cprsn
8	171877	Bolt 5/16-18 uncx 3/4 w/Sems
10	196977	Pan, Seat
21	171852	Bolt, Shoulder 5/16-18

KEY NO.	PART NO.	DESCRIPTION
37	STD541437	Nut, Lock 5/16-18 unc
40	197661	Handle Slide Seat
41	198200	Spring Latch Seat
43	STD523707	Bolt Fin Hex 3/8-16 unc x 3/4
44	19133812	Washer 13/32 x 2-3/8 x 12 Ga.

NOTE: All component dimensions given in U.S. inches.
1 inch = 25.4 mm

TRACTOR - - MODEL NUMBER 256780

ENGINE



TRACTOR - - MODEL NUMBER 256780

ENGINE

KEY NO.	PART NO.	DESCRIPTION
1	-----	Engine Briggs Model No. 31P977-0652-B1
2	188655	Muffler
9	194320	Keeper Belt Engine
12	405471	Pulley Engine
15	407489	Tank Fuel
18	197725	Cap Asm
20	175438X428	Control Throttle
21	191611	Screw 10 x 3/4 Single Lead-Hex
25	187771X428	Control Choke
28	137040	Fuel Line
29	137180	Spark Arrester Kit
37	123487X	Clamp Hose
42	STD551143	Washer Lock 7/16
44	17670412	Screw Hexwash Thdrol 1/4 - 20 x 3/4
45	STD541425	Nut Keps Hex 1/4-20 unc
46	19091416	Washer 9/32 x 7/8 x 16
69	165291	Gasket
79	192334	Screw Socket Head 5/16-18 x .75
81	148456	Tube Drain Oil Easy
82	181654	Plug Drain Oil
83	171877	Bolt 5/16-18 unc x 3/4 w/Sems
84	17060620	Screw 3/8-16 x 1-1/4
85	173937	Bolt 7/16-20 x 4 x Gr. 5-1.5
90	17000616	Screw 3/8-16 x 1
94	405450	Exhaust Tube

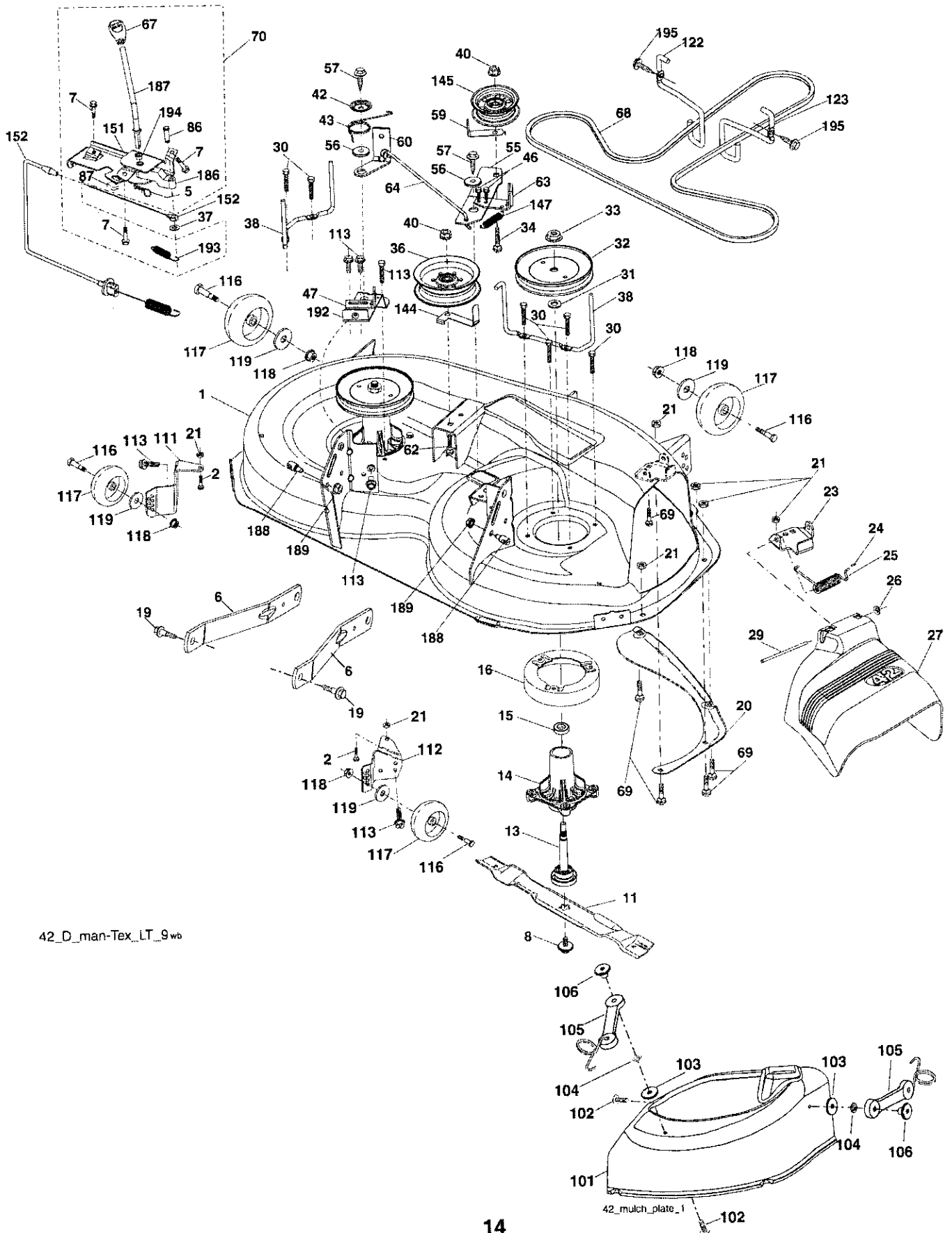
NOTE: All component dimensions given in U.S. inches.
1 inch = 25.4 mm

Engine Power Rating Information

The gross power rating for individual gas engine models is labeled in accordance with SAE (Society of Automotive Engineers) code J11940 (Small Engine Power & Torque Rating Procedure), and rating performance has been obtained and corrected in accordance with SAE J1995 (Revision 2002-5). Actual gross engine power will be lower and is affected by, among other things, ambient operating conditions and engine-to-engine variability. Given both the wide array of products on which engines are placed and the variety of environmental issues applicable to operating the equipment, the gas engine will not develop the rated gross power when used in a given piece of power equipment (actual "on-site" or net horsepower). This difference is due to a variety of factors including, but not limited to, accessories (air cleaner, exhaust, charging, cooling, carburetor, fuel pump, etc.), application limitations, ambient operating conditions (temperature, humidity, altitude), and engine-to-engine variability. Due to manufacturing and capacity limitations, Briggs & Stratton may substitute an engine of higher rated power for this Series engine.

TRACTOR - - MODEL NUMBER 256780

MOWER



42_D_man-Tex_LT_9wb

TRACTOR - - MODEL NUMBER 256780

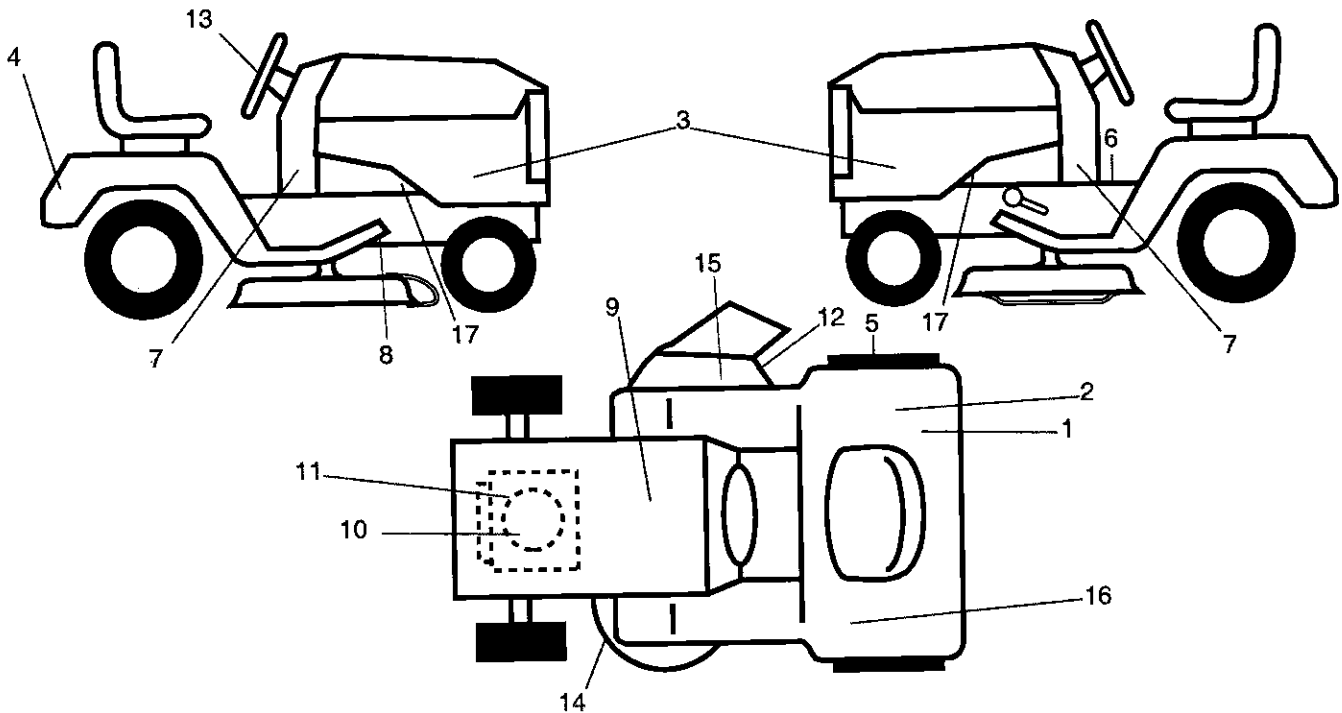
MOWER

KEY NO.	PART NO.	DESCRIPTION	KEY NO.	PART NO.	DESCRIPTION
1	196495	Deck Weldment Mower	64	199790	Link Brake Asm
2	72140506	Bolt 5/16-18 x 3/4	67	198398X428	Handle Clutch Cable
5	STD624008	Retainer Spring	68	197253	V-Belt
6	195186	Arm Suspension	69	STD533106	Bolt
7	191611	Screw 10 x 3/4 Single Lead Hex	70	199972	Clutch Asm Manual
8	193003	Bolt/Washer asm 7/16-20 unf	86	197798	Pin Attachment Cable
11	134149	Blade, 42" Mulching Std (For mulching mowers only)	87	197802	Switch Interlock
--	138971	Blade, 42" Hi-Lift (For bagging or discharge)	101	193107	Cover, Mulching
--	139775	Blade, 42" Mulching Premium (For better wear when mulching)	102	71081010	Screw Pan Hd 10 - 24 x 5/8
13	192872	Shaft Assembly, Mandrel	103	1901216	Washer #10
14	187281	Housing, Mandrel	104	10071000	Washer Lock #10
15	110485X	Bearing, Ball, Mandrel	105	160793	Latch Asm
16	174493	Stripper, Mower Deck	106	2029J	Nut Weld
19	196539	Bolt, Shoulder	111	404784	Bracket Wheel Gauge LH
20	159770	Baffle, Vortex	112	404785	Bracket Wheel Gauge RH
21	STD541431	Nut, Crownlock 5/16-18 unc	113	17000510	Bolt 5/16-18
23	192557	Bracket, Deflector	116	4898H	Bolt, Shoulder
24	105304X	Cap, Sleeve	117	188606	Wheel, Gauge
25	197026	Spring, Torsion, Deflector	118	STD541437	Nut, Crownlock 3/8-16
26	110452X	Nut, Push	119	19121414	Washer 3/8 x 7/8 x 14
27	193108X428	Shield, Deflector	122	197258	Keeper Belt Engine LH
29	131491	Rod, Hinge	123	197259	Keeper Belt Engine RH
30	173984	Screw Thdrol Rolling Wsh Hd	144	199204	Keeper Belt
31	187690	Washer, Spacer	145	197379	Pulley Idler
32	197473	Pulley, Mandrel	147	401971	Spring Return
33	400234	Nut, Toplock, Flanged	151	199971	Bracket Clutch Cable
34	72110612	Bolt Carr Sh. 3/8-16 x 1-1/2 Gr. 5	152	408714	Manual Clutch Cable
36	193197	Pulley, Idler, Flat	186	197799	Arm Actuator
37	STD551037	Washer	187	199869	Lever Control
38	199189	Keeper Belt LH Mandrel	188	195161	Stud Fastener
40	73900600	Nut, Lock Fig. 3/8-16 unc	189	73900500	Nut Lock Hex Flange
42	198410	Spring Torsion Brake	192	197260	Bracket Brake Stand LH
43	197256	Spring Torsion Retainer	193	197801	Spring Plunger Actuator
46	137729	Screw Thd Roll 1/4-20 x 5/8	194	197797	Bearing Control Lever Clutch
47	197250	Bracket Clutch Cable	195	17000612	Screw Hex Wsh Thdr 3/8-16 x 3/4
55	197249	Arm, Idler	--	192870	Mandrel Assembly (Includes housing, shaft and shaft hardware only-pulley not included)
56	199092	Spacer, Retainer	--	405094	Replacement Mower, Complete
57	17000616	Screw 3/8-16 x 1			
59	141043	Guard, Tuv Idler			
60	197261	Arm Brake Mower			
62	STD533720	Bolt Rd Hd Sq Nk 3/8-16 unc x 2			
63	199477	Arm Brake Mower			

NOTE: All component dimensions given in U.S. inches.
1 inch = 25.4 mm

TRACTOR -- MODEL NUMBER 256780

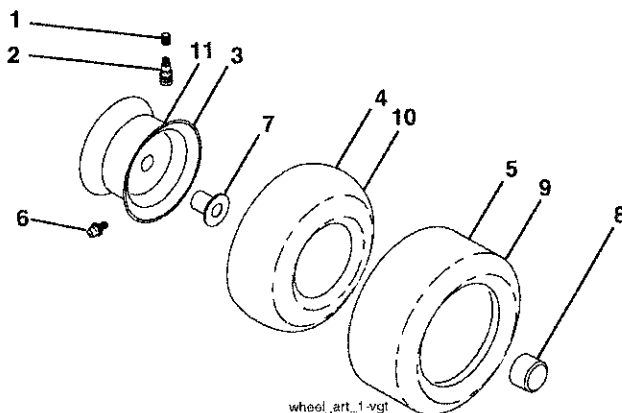
DECALS



KEY NO.	PART NO.	DESCRIPTION
1	178302	Decal, Oper. Cruise
2	140837	Decal, Saddle
3	403260	Decal, Side Panel
4	411697	Decal, Fender
5	180432	Decal, Fender DB
6	400389	Decal, Warning
7	411114	Decal, Chassis
8	199135	Decal, V-Belt Schematic
9	145005	Decal, Battery Dnge/Poi
10	409704	Decal, Engine HP
11	196841	Decal, Warning Eng.
12	196357	Decal, Deflect
13	164065	Decal, Steering Wheel

KEY NO.	PART NO.	DESCRIPTION
14	160396	Decal, Mower Schematic
15	182166	Decal, Cutfinger
16	159737	Decal, Brake/Clutch
17	159736	Decal, Chassis Hot Muffler
--	193226X428	Pad, Footrest
--	400981X428	Pad, Footrest, Control
--	166960	Decal, Bypass
--	162598	Decal, Drawbar
--	413067	Manual, Operator's (Euro)
--	413068	Manual, Operator's (Scan)
--	413069	Manual, Operator's (EBloc)
--	413070	Manual, Operator's (Baltic)
--	413071	Manual, Parts

WHEELS & TIRES

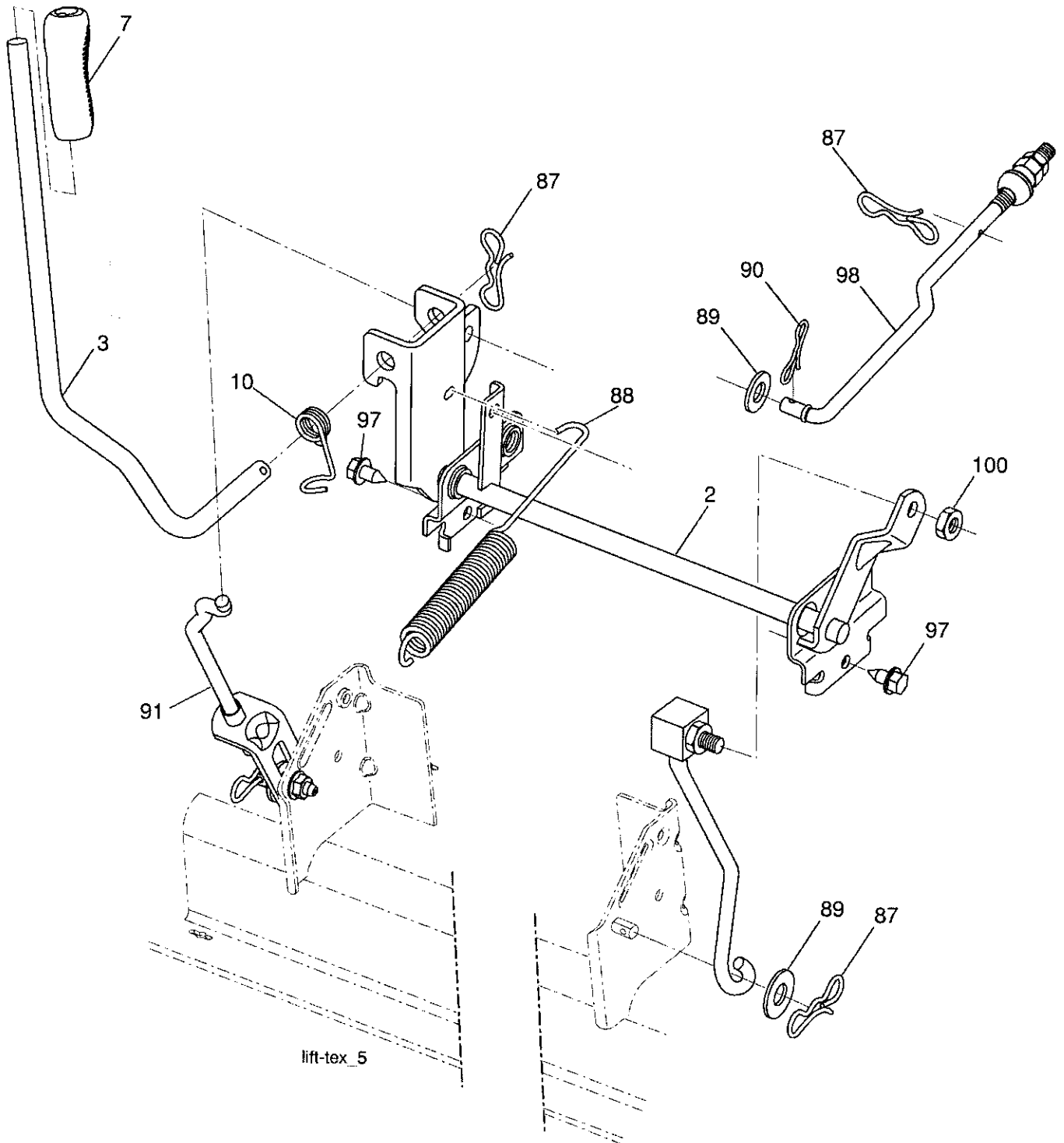


KEY NO.	PART NO.	DESCRIPTION
1	59192	Cap, Valve, Tire
2	65139	Stem, Valve
3	106732X645	Rim Assembly, Front
4	59904	Tube, Front
5	106222X	Tire, Front
6	278H	Fitting, Grease
7	9040H	Bearing, Flange
8	104757X645	Cap, Axle (Front Wheel Only)
9	138468	Tire, Rear
10	7152J	Tube, Rear
11	106108X645	Rim Assembly, Rear
--	144334	Sealant, Tire (10 oz. Tube)

NOTE: All component dimensions given in U.S. inches.
1 inch = 25.4 mm

TRACTOR - - MODEL NUMBER 256780

MOWER LIFT

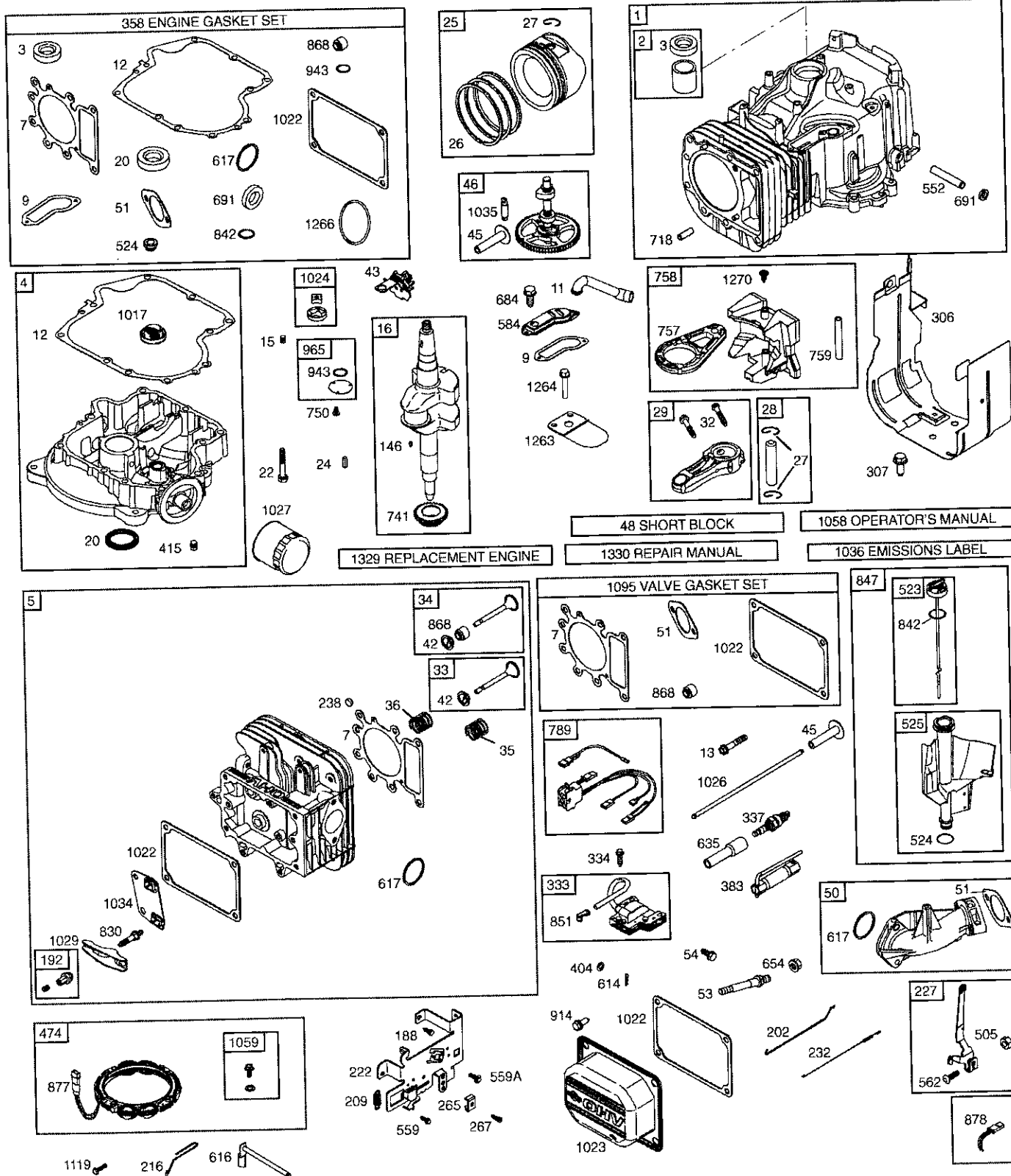


KEY NO.	PART NO.	DESCRIPTION
2	195223	Shaft Asm., Lift
3	195231	Lever Asm., Lift Rh
7	196492X428	Grip, Lever
10	196314	Spring Torsion
87	194209	Pin Cotter 7/16 Bow Tie Lock
88	410710	Spring Lift Assist
89	19191912	Washer Clear Zinc
90	194208	Pin Cotter 5/16 Bow Tie Lock

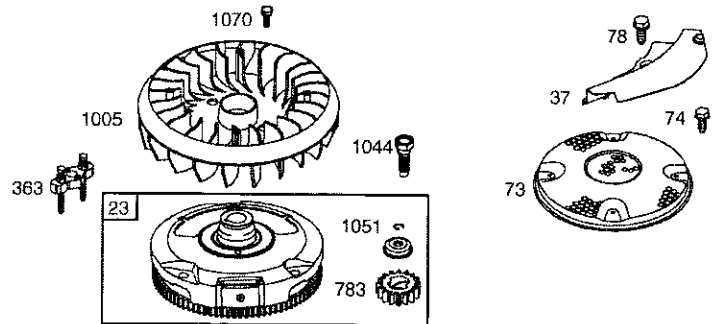
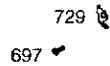
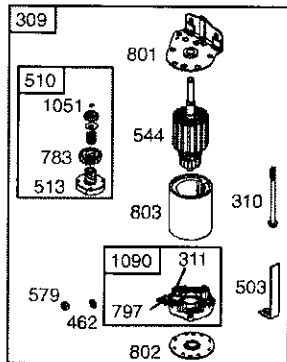
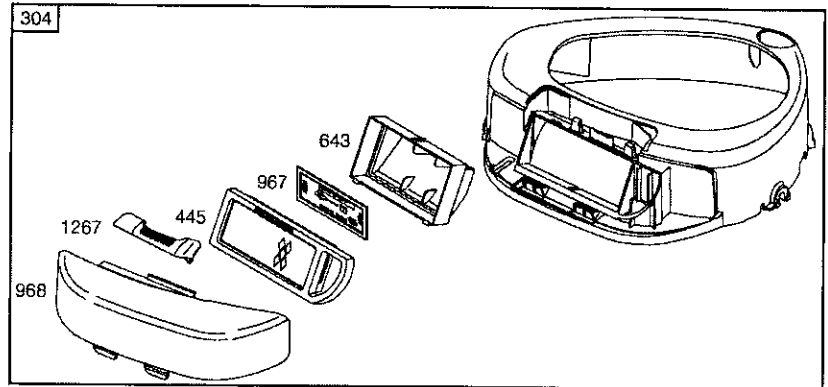
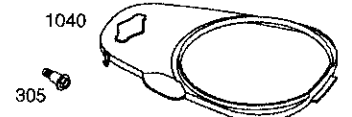
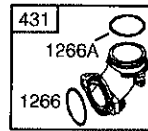
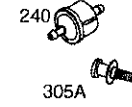
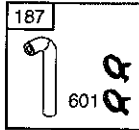
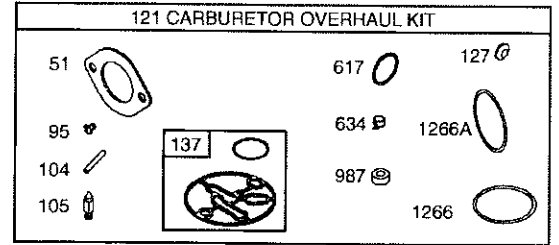
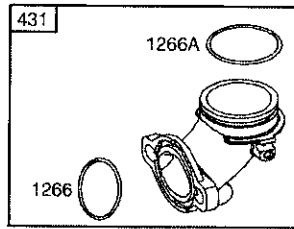
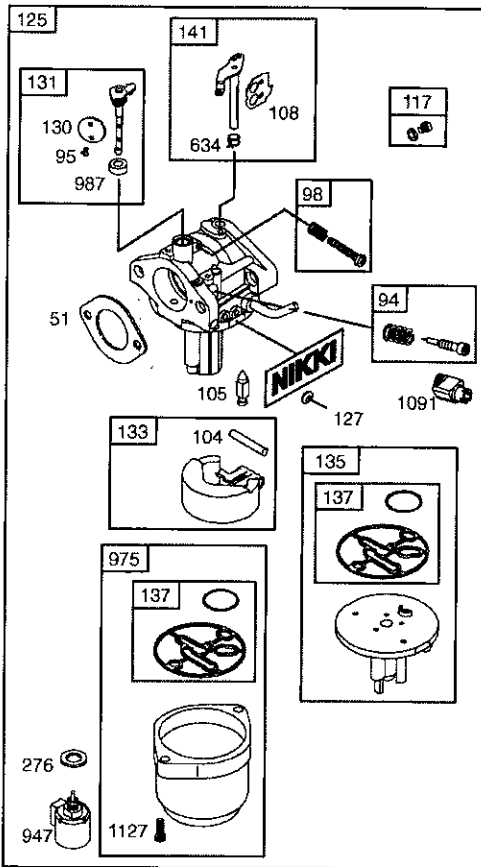
KEY NO.	PART NO.	DESCRIPTION
91	195181	Link Asm. Lift Rear
97	17060612	Screw 3/8-16 x .75 Srmgml Tap/R.Z
98	195270	Link Lift Susp. Front Mower
100	73930600	Nut Lock 3/8 - 16 UNC

NOTE: All component dimensions given in U.S. inches.
1 inch = 25.4 mm

TRACTOR - - MODEL NUMBER 256780 BRIGGS ENGINE-MODEL NUMBER 31P977, TYPE NUMBER 0652-B1



TRACTOR - - MODEL NUMBER 256780 BRIGGS ENGINE-MODEL NUMBER 31P977, TYPE NUMBER 0652-B1



TRACTOR - - MODEL NUMBER 256780

BRIGGS ENGINE-MODEL NUMBER 31P977, TYPE NUMBER 0652-B1

KEY NO.	PART NO.	DESCRIPTION	KEY NO.	PART NO.	DESCRIPTION
1	697174	Cylinder Assembly	104	694918	Ø Pin-Float Hinge
2	399265	Kit-Bushing/Seal (Magneto Side)	105	696136	Ø Valve-Float Needle
3	391086s	• Seal-Oil (Magneto Side)	108	695419	Valve-Choke
4	697188	Sump-Engine	117	792296	Jet-Main (Standard)
5	792770	Head-Cylinder	121	792369	Kit-Carburetor Overhaul
7	699168	•+ Gasket-Cylinder Head	125	792768	Carburetor
9	697109	• Gasket-Breather	127	690727	Ø Plug-Welch
11	697113	Tube-Breather	130	792747	Valve-Throttle
12	697110	• Gasket-Crankcase	131	792765	Kit-Throttle Shaft
13	690360	Screw (Cylinder Head)	133	694914	Float-Carburetor
15	690946	Plug-Oil Drain	135	698780	Tube-Fuel Transfer
16	697127	Crankshaft	137	698781	Ø Gasket-Float Bowl
20	690947	• Seal-Oil (PTO Side)	141	792777	Kit-Choke Shaft
22	692125	Screw (Crankcase Cover/Sump)	146	691639	Key-Timing
23	693557	Flywheel	187	791805	Line-Fuel (Formed)
24	222698s	Key-Flywheel			(Cut to Required Length)
25	791937	Piston Assembly (Standard)	188	691693	Screw (Control Bracket)
--	792862	Piston Assembly (.020" Oversize)	192	691986	Adjuster-Rocker Arm
26	791936	Ring Set (Standard)	202	691841	Link-Mechanical Governor
--	791947	Ring Set (.020" Oversize)	209	692208	Spring-Governor
27	698469	Lock-Piston Pin	222	694042	Bracket-Control
28	697099	Pin-Piston	227	691374	Lever-Governor Control
29	791631	Rod-Connecting	232	691842	Spring-Governor
32	791118	Screw (Connecting Rod)	238	691843	Cap-Valve
33	791934	Valve-Exhaust	240	394358s	Filter-Fuel
34	791935	Valve-Intake	265	691024	Clamp-Casing
35	691279	Spring-Valve (Intake)	267	792629	Screw (Casing Clamp)
36	691279	Spring-Valve (Exhaust)	276	695410	Ø Washer-Sealing
37	697352	Guard-Flywheel	304	699704	Housing-Blower
42	499586	Retainer-Valve	305	697102	Screw (Blower Housing)
43	691968	Slinger-Governor/Oil	305A	697103	Screw (Blower Housing)
45	690564	Tappet-Valve	306	697107	Shield-Cylinder
46	791942	Camshaft	307	691003	Screw (Cylinder Shield)
48	N/A	Short Block	309	693551	Motor-Starter
50	690193	Manifold-Intake	310	690323	Bolt (Starter Motor)
51	692137	•Ø+ Gasket-Intake	311	497608	Brush Set
53	690227	Stud (Carburetor)	333	492341	Armature-Magneto
54	691148	Screw (Intake Manifold)	334	691061	Screw (Magneto Armature)
73	697133	Screen-Rotating	337	691043	Plug-Spark
74	697897	Screw (Rotating Screen)	358	697191	Gasket Set-Engine
78	691003	Screw (Flywheel Guard)	363	19203	Flywheel Puller
94	695425	Kit-Idle Mixture	383	89838s	Wrench-Spark Plug
95	690718	Ø Screw (Throttle Valve)	404	691691	Washer (Governor Crank)
98	695408	Kit-Idle Speed	415	690283	Plug
			431	697122	Elbow-Intake
			445	697153	Filter-Air Cleaner Cartridge
			462	691261	Washer (Starter Cable)

TRACTOR - - MODEL NUMBER 256780

BRIGGS ENGINE-MODEL NUMBER 31P977, TYPE NUMBER 0652-B1

KEY NO.	PART NO.	DESCRIPTION	KEY NO.	PART NO.	DESCRIPTION
474	696459	Alternator	947	699915	Solenoid-Fuel
503	691532	Strap-Starter	965	499613	Cover-Oil Pump
505	691251	Nut (Governor Control Lever)	967	697015	Filter-Pre Cleaner
510	693699	Drive-Starter	968	698403	Cover-Air Cleaner
513	692024	Clutch-Drive	975	699502	Bowl-Float
523	699908	Dipstick	987	698777	Ø Seal-Throttle Shaft
524	691032	• Seal-Dipstick Tube	1005	699043	Fan-Flywheel
525	697184	Tube-Dipstick	1017	690770	Screen-Oil Pump
544	692034	Starter-Armature	1022	272475s	*+ Gasket-Rocker Cover
552	697144	Bushing-Governor Crank	1023	791079	Cover-Rocker Arm
559	697561	Screw (Remote Choke Stop)	1024	499054	Pump-Oil
559A	693675	Screw (Remote Choke Stop)	1026	692003	Rod-Push (Intake)
562	691119	Bolt (Governor Control Lever)	-----	692011	Rod-Push (Exhaust)
579	691029	Nut (Starter Cable)	1027	696854	Filter-Oil
584	697112	Cover-Breather Passage	1029	691751	Arm-Rocker
601	791850	Clamp-Hose	1034	690822	Guide-Push Rod
614	691620	Pin-Cotter	1035	693784	Shaft-Pump
616	692012	Crank-Governor	1036	792450	Label-Emissions
617	692138	Ø • Seal-O Ring (Intake Manifold)	1040	699852	Plate-Trim
634	698779	Ø Spring/Seal Assembly (Choke A Matic)	1044	698139	Screw (Flywheel)
635	691909	Boot-Spark Plug	1051	691265	Ring-Retaining
643	698401	Retainer-Air Filter	1058	276344	Operator's Manual
654	690958	Nut (Carburetor)	1059	698516	Kit-Screw/Washer
684	697157	Screw (Breather Passage Cover)	1070	690372	Screw (Flywheel Fan)
691	692407	• Seal-Governor Shaft	1090	691293	Retainer-Brush
697	690372	Screw (Drive Cap)	1091	691333	Cap-Limiter
718	690959	Pin-Locating	1095	690190	Gasket Set-Valve
729	691224	Clip-Wire	1119	691183	Screw (Alternator)
741	697128	Gear-Timing	1127	695407	Screw (Float Bowl)
750	790832	Screw (Oil Pump Cover)	1263	697124	Reed-Breather
757	697607	Link-Counterweight	1264	697104	Screw (Breather Reed)
758	697134	Counterweight	1266	691917	•Ø Seal-O Ring (Intake Elbow)
759	697392	Pin-Counterweight	1266A	697123	Ø Seal-O Ring (Intake Elbow)
783	693713	Gear-Pinion	1267	697419	Latch-Blower Housing
789	698329	Harness-Wiring	1270	697156	Plug-AVS Counterweight
797	693167	Nut (Brush Retainer)	1329	31P977-0036	Replacement Engine (Transfer Muffler and/or Spark Arrester Assembly from the original engine if suitable for additional service or add new parts as required. Transfer Governor Spring to replacement engine. Transfer the speed limiter control assembly to the replacement engine.)
801	691283	Cap-Drive			
802	691286	Cap-End			
803	-----	Housing-Starter (For service order complete starter motor reference 309)			
830	691095	Stud (Rocker Arm)			
842	691031	• Seal-O Ring (Dipstick Tube)			
847	790442	Dipstick/Tube Assembly	1330	272147	Repair Manual
851	692424	Terminal-Spark Plug			
868	690968	*+ Seal-Valve			
877	393456	Wire/Connector-Alternator	•		Included in Engine Gasket Set, Key. No. 358
878	398661	Harness-Alternator	Ø		Included in Carburetor Overhaul Kit, Key. No. 121
914	691108	Screw (Rocker Cover)	+		Included in Valve Gasket Set, Key. No. 1095
943	690589	• Seal-O Ring (Oil Pump Cover)			

NOTE: All component dimensions given in U.S. inches
1 inch = 25.4 mm

SERVICE NOTES

SERVICE NOTES

LIMITED WARRANTY ON CRAFTSMAN RIDING EQUIPMENT

For two (2) years from the date of purchase, if this Craftsman Riding Equipment is maintained, lubricated and tuned up according to the instructions in the owner's manual, Sears will repair or replace free of charge any parts that are found to be defective in material or workmanship according to the guidelines of coverage listed below. Sears will also provide free labor for these applicable warranted parts for 2 full years. During the first 30 days of purchase, there will be no charges to service the product at your home for issues covered by this warranty. (See exclusions below). For your convenience, IN HOME warranty service will still be available after the first 30 days of purchase, but a trip charge will apply. This charge will be waived if the Craftsman product is dropped off at an authorized Sears location. For the nearest authorized Sears location, please call 1-800-4-MY-HOME®. This warranty applies only while this product is within the United States.

This Warranty does not cover:

- Expendable items which become worn during normal use, including but not limited to blades, spark plugs, air cleaners, belts, and oil filters.
- Standard Maintenance Servicing, oil changes, or tune-ups
- Tire replacement or repair caused by punctures from outside objects, such as nails, thorns, stumps, or glass.
- Repairs necessary because of operator abuse, including but not limited to, damage caused by towing objects beyond the capability of the riding equipment, impacting objects that bend the frame or crankshaft, or over-speeding the engine.
- Repairs necessary because of operator negligence, including but not limited to, electrical and mechanical damage caused by improper storage, failure to use the proper grade and amount of engine oil, failure to keep the deck clear of flammable debris, or failure to maintain the equipment according to the instructions contained in the owner's manual.
- Engine (fuel system) cleaning or repairs caused by fuel determined to be contaminated or oxidized (stale). In general, fuel should be used within 30 days of its purchase date.
- Normal deterioration and wear of the exterior finishes, or product label replacement.
- Riding equipment used for commercial or rental purposes.

LIMITED WARRANTY ON BATTERY

For ninety (90) days from date of purchase, if any battery included with this riding equipment proves defective in material or workmanship and our testing determines the battery will not hold a charge, Sears will replace the battery at no charge. During the first 30 days of purchase, there will be no charges to replace the battery at your HOME. After the first 30 days, for your convenience, IN-HOME warranty service will still be available but a trip charge will apply. This charge will be waived if the Craftsman product is dropped off at an authorized Sears location. For the nearest authorized Sears location, please call 1-800-4-MY-HOME®.

This battery warranty applies only while this product is within the United States.

This warranty gives you specific legal rights, and you may also have other rights, which vary, from state to state.

Sears, Roebuck and Co., Hoffman Estates, IL 60179

CRAFTSMAN®