

REPAIR PARTS MANUAL
MODEL NO. 257400
Lawn Tractor



HOW TO USE THIS MANUAL

This manual is designed to provide the customer with a means to identify the parts on his/her tractor when ordering repair parts. The illustrations may or may not represent the actual assemblies; therefore, it is not recommended to use this manual as a guide to assemble or disassemble the tractor. Some hardware and parts are drawn larger in order to more readily identify them.

Each tractor has its own model number.

The model number for your tractor can be found on the fender under the seat.

When ordering parts, always give the following information:

- Product - "Tractor"
- Model Number - "257400"
- Part Number
- Part Description

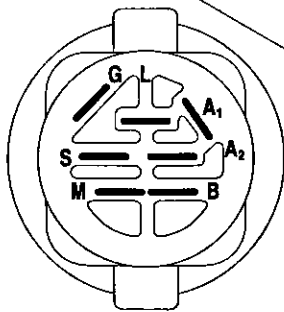
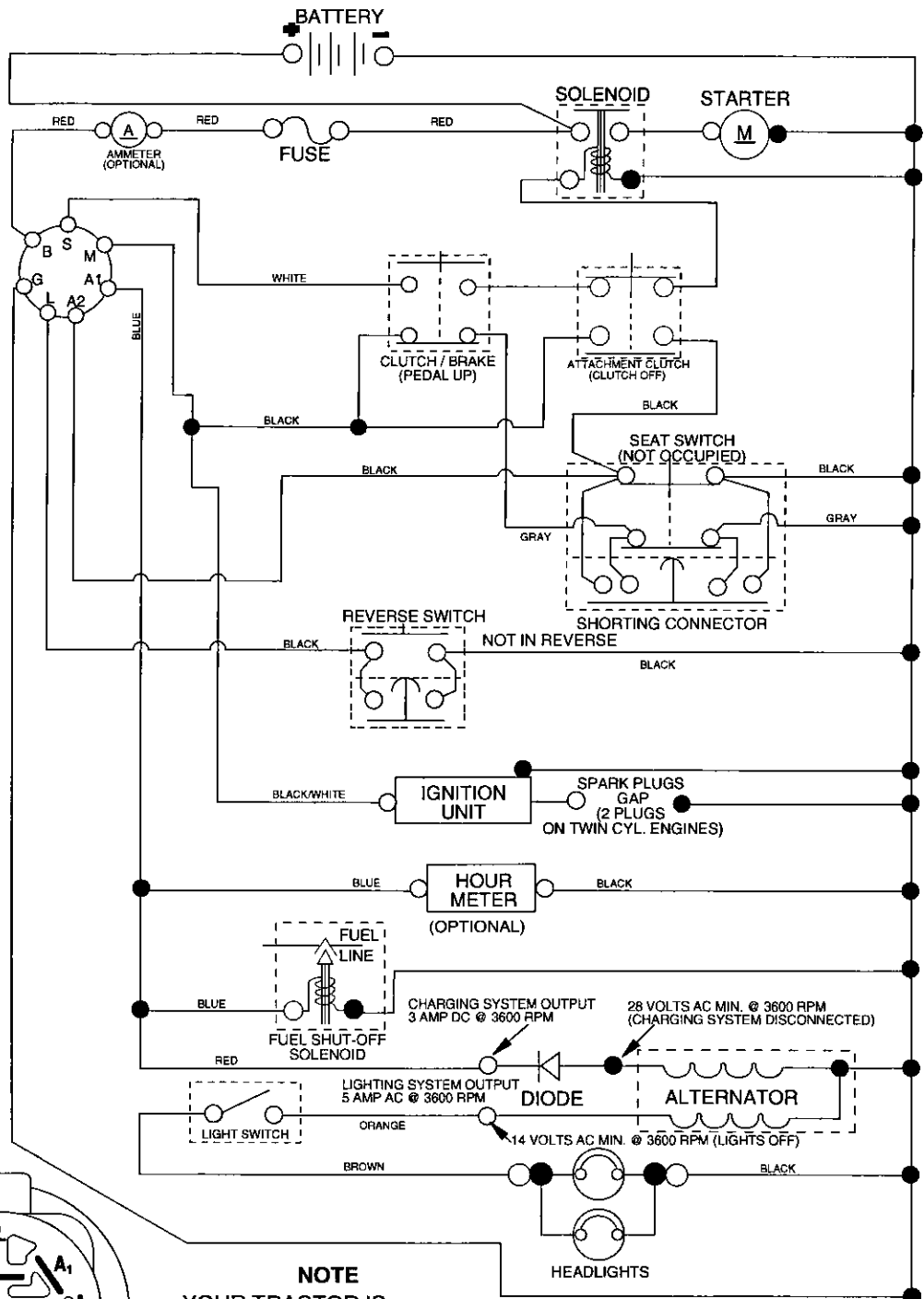
TABLE OF CONTENTS

SCHEMATIC	3
ELECTRICAL.....	4-5
CHASSIS	6-7
DRIVE.....	8-9
STEERING	10-11
SEAT	12
DECALS.....	13
ENGINE.....	14-15
MOWER LIFT.....	16-17
MOWER DECK.....	18-19
TRANSAXLE.....	20-21
ENGINE BREAKDOWN.....	22-27
WARRANTY.....	BACK COVER

TRACTOR- -MODEL NO. 917. 257400

SCHEMATIC

02836_193374 / 390



IGNITION SWITCH

POSITION	CIRCUIT "MAKE"
OFF	M+G+A1
RUN/OVERRIDE	B+A1
RUN	B+A1 L+A2
START	B + S + A1

02836

NOTE

YOUR TRACTOR IS EQUIPPED WITH A SPECIAL ALTERNATOR SYSTEM. THE LIGHTS ARE NOT CONNECTED TO THE BATTERY, BUT HAVE THEIR OWN ELECTRICAL SOURCE. BECAUSE OF THIS, THE BRIGHTNESS OF THE LIGHTS WILL CHANGE WITH ENGINE SPEED. AT IDLE THE LIGHTS WILL DIM. AS THE ENGINE IS SPEEDED UP, THE LIGHTS WILL BECOME THEIR BRIGHTEST.

● NON-REMOVABLE CONNECTIONS

○ REMOVABLE CONNECTIONS

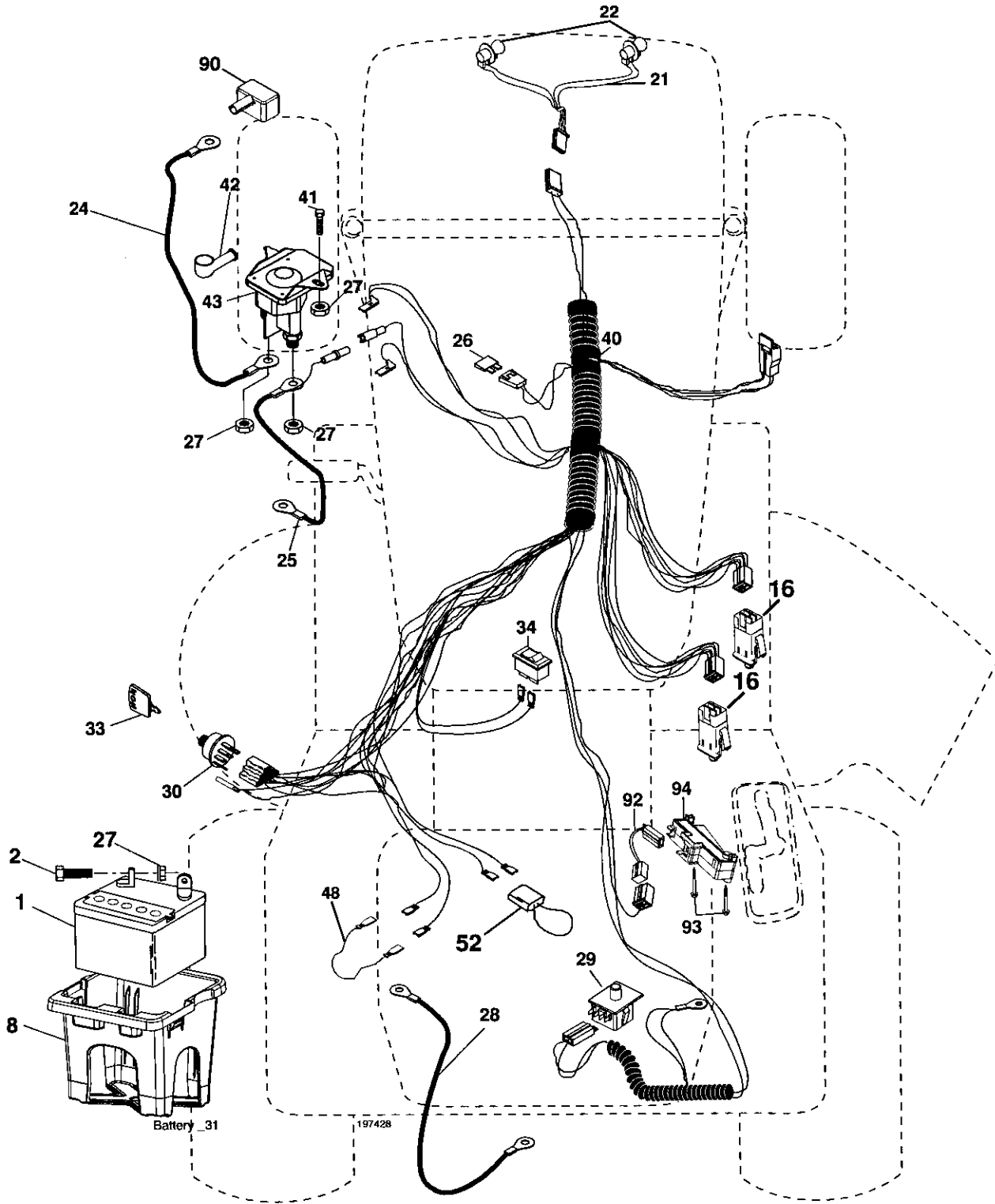
WIRING INSULATED CLIPS

NOTE: IF WIRING INSULATED CLIPS WERE REMOVED FOR SERVICING OF UNIT, THEY SHOULD BE REPLACED TO PROPERLY SECURE YOUR WIRING.

REPAIR PARTS

TRACTOR- -MODEL NO. 917. 257400

ELECTRICAL



REPAIR PARTS

TRACTOR- -MODEL NO. 917. 257400

ELECTRICAL

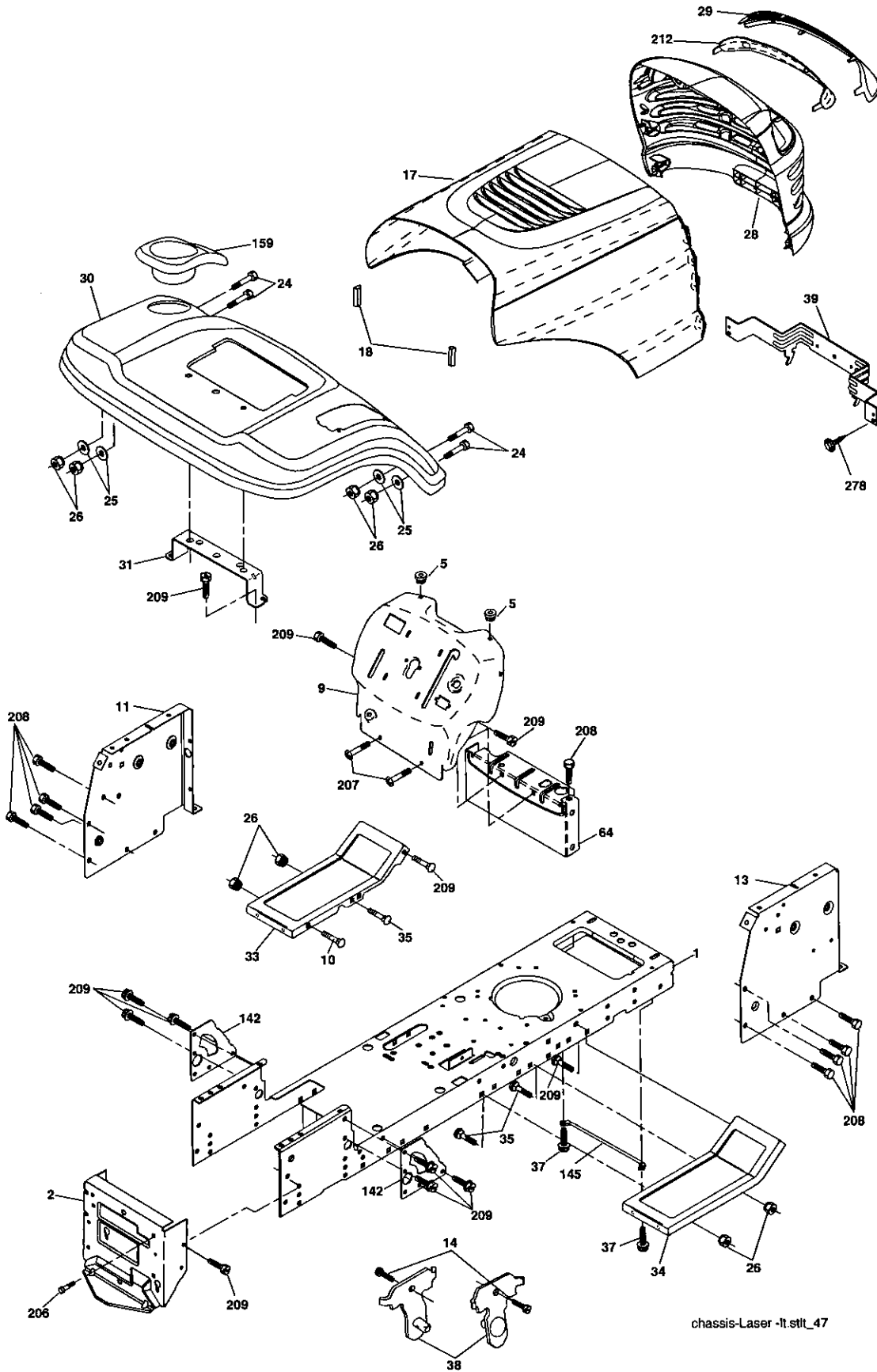
KEY NO.	PART NO.	DESCRIPTION
1	163465	Battery
2	74760412	Bolt Hex Hd 1/4-20 unc x 3/4
8	176689	Box Battery Fender
16	176138	Switch, Interlock
21	175688	Harness Asm Light W/4152j
22	4152J	Bulb Light #1156
24	4799J	Cable Battery 6 Ga. 11" red
25	146147	Cable Battery 6 Ga. w/16 wire red
26	175158	Fuse 20 AMP
27	73510400	Nut, Keps Hex 1/4-20 unc
28	4207J	Cable Ground 6 Ga. 12" black
29	192749	Switch Seat
30	193350	Switch Ign
33	140403	Key Ign Molded Craftsman
34	110712X	Switch Light
40	197428	Harness Ign
41	71110408	Bolt Blk. Fin Hex 1/4-20 unc x 1/2
42	131563	Cover Terminal Red
43	192507	Solenoid
48	140844	Adapter Ammeter
52	141940	Protection Wire Loop
90	180449	Cover Battery Terminal
92	196615	Harness Pigtail Reverse Switch
93	192540	Screw Plastic 10-14 x 2.0
94	191834	Module Reverse ROS

NOTE: All component dimensions give in U.S. inches
1 inch = 25.4 mm

REPAIR PARTS

TRACTOR- -MODEL NO. 917. 257400

CHASSIS AND ENCLOSURES



chassis-Laser -lt.stlt_47

REPAIR PARTS

TRACTOR- -MODEL NO. 917. 257400

CHASSIS AND ENCLOSURES

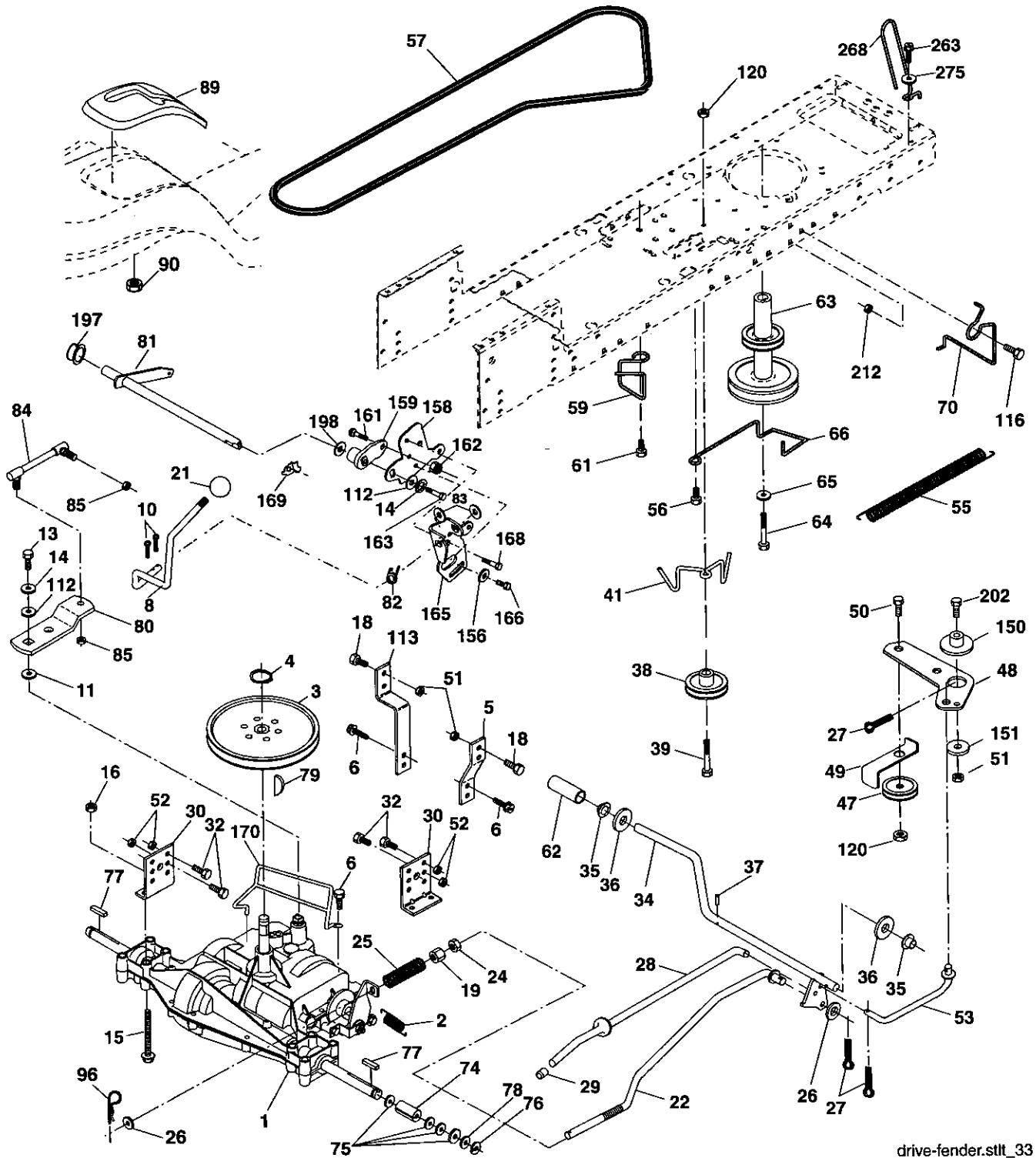
KEY NO.	PART NO.	DESCRIPTION
1	174619	Chassis Stamping
2	176554	Drawbar
5	155272	Bumper Hood/Dash
9	193510X013	Dash
10	STD533710	Bolt, Carriage 3/8-16 x 1
11	174996	Panel, Dash, L.H.
13	172105X010	Panel, Dash, R.H.
14	17490608	Screw Thdrol 3/8-16 x 1/2
17	187559x613	Hood Assembly
18	184921	Bumper Hood Large 1.75
24	STD523710	Bolt Fin Hex 3/8-16 unc x 1 Gr. 5
25	19131312	Washer 13/32 x 13/16 x 12 Ga.
26	STD541437	Nut
28	187598	Grille Lens Asm
29	187567x599	Lens, Laser
30	192528X613	Fend/Frest Pnt STLT
31	136619	Bracket, Fender Support
33	179716X613	Footrest LH
34	179717X613	Footrest RH
35	STD533707	Bolt Rdhd Sht Sqnk 3/8-16 x 3/4
37	17490508	Screw Thdrol 5/16-18 x 1/2 Tyl
38	175710	Bracket Asm. Pivot Mower Rear
39	187568	Bracket Pivot Laser
64	154798	Dash Lower STLT
142	175702	Plate Reinforcement STLT
145	409167	Rod Pivot Chassis/Hood
159	169473X428	Cupholder
206	170165	Bolt Shoulder 5/16 -18 TT
207	17670508	Screw Thdrol 5/16-18 x 1/2 TYTT
208	17670608	Screw Thdrol 3/8-16 x 1/2
209	17000612	Screw Hex Wsh Thdr 3/8-16 x 3/4
212	187569	Insert Lens Reflective
278	191611	Screw 10 x 3/4 Single Head-Hex
--	5479J	Plug, Button

NOTE: All component dimensions give in U.S. inches
1 inch = 25.4 mm

REPAIR PARTS

TRACTOR- -MODEL NO. 917. 257400

DRIVE



drive-fender.stlt_33

REPAIR PARTS

TRACTOR- -MODEL NO. 917. 257400

DRIVE

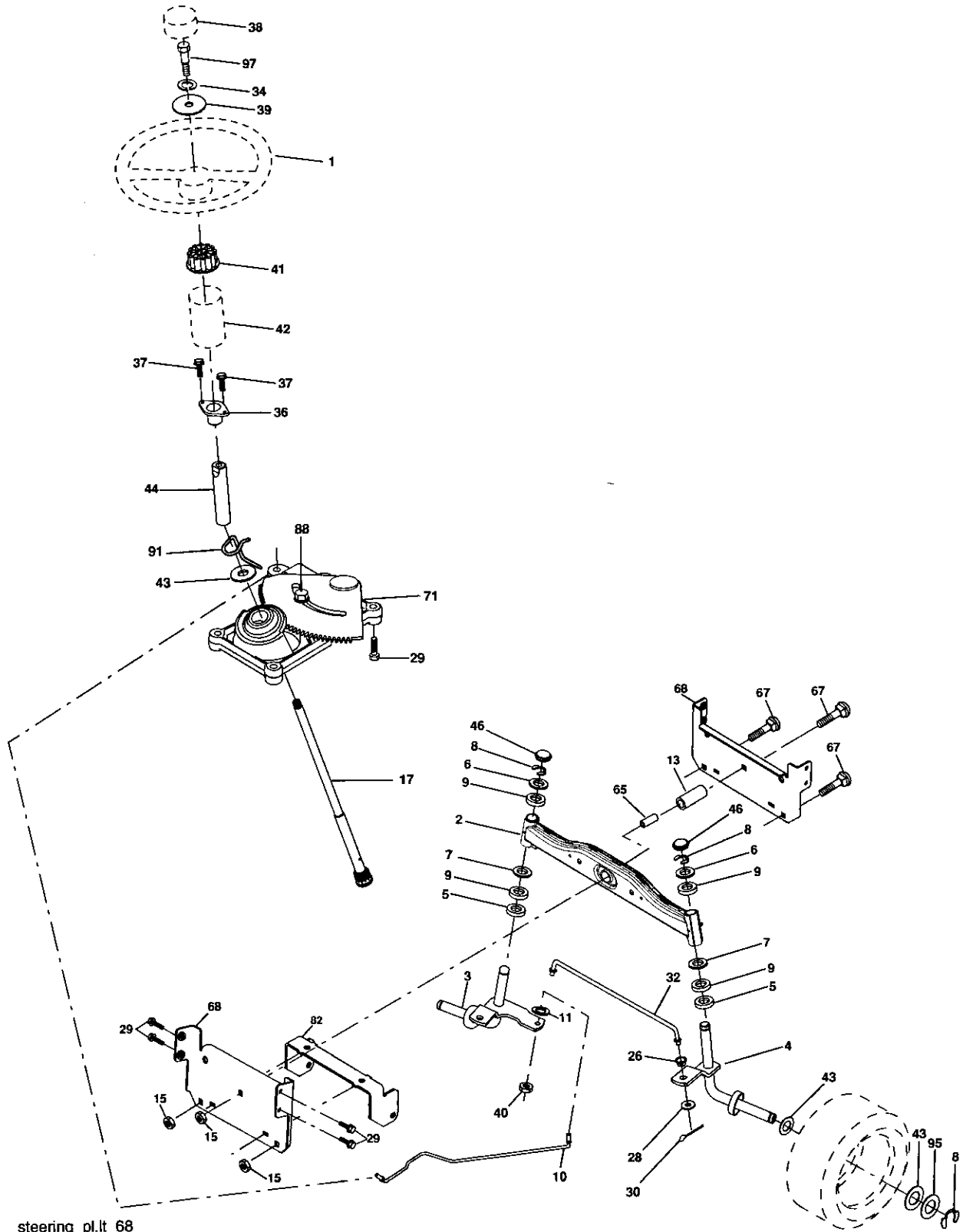
KEY NO.	PART NO.	DESCRIPTION	KEY NO.	PART NO.	DESCRIPTION
1	-----	Transaxle Peerless Model 206-545C (Order parts from transaxle manufacturer)	62	8883R	Cover Pedal Blk Round
2	146682	Spring Return Brake	63	180219	Engine Pulley LT/YT
3	123666X	Pulley Transaxle 18"tires	64	173937	Bolt Hex 7/16-20 x 4 Gr. 5
4	12000028	Ring Retainer # 5100-62	65	10040700	Washer Lock Hvy Hlcl Spr 7/16
5	121520X	Strap Torque 30 Degrees RH	66	154778	Keeper Belt Engine
6	17060512	Screw 5/16-18 x 3/4	69	142432	Screw 1/4 x 1/2 unc
8	192706	Rod Shifter Blk	70	180218	Guide Belt Mower Drive RH
10	76020416	Pin Cotter 1/8 x 1 Cad	74	137057	Spacer Axle
11	105701X	Washer Plate Shf 388 Sq Hole	75	121749X	Washer 25/32 x 1 1/4 x 16 Ga.
13	74550412	Bolt 1/4-28 unf Gr. 8 w/Patch	76	12000001	E-ring #5133-75
14	10040400	Washer Lock Hvy Helical 1/4	77	123583X	Key Square 2 0 x 1845/ 1865
15	74490544	Bolt Hex Flghd 5/16-18 Gr. 5	78	121748X	Washer 25/32 x 1-5/8 x 16 Ga.
16	73800500	Nut 5/16-18	79	2228M	Key Woodruff
18	74780616	Bolt Fin Hex 3/8-16 unc x 1 Gr. 5	80	131486	Arm Shift Transaxle
19	73800600	Nut lock Hex w/Ins 3/8-16 Unc	81	165594	Shaft Asm Cross Taper
21	106933X	Knob	82	165711	Spring Torsion Shift
22	130804	Rod Brake LT	83	19171216	Washer 17/32 x 3/4 x 16 Ga.
24	73350600	Nut Hex Jam 3/8-16 unc	84	166228	Link Transaxle
25	106888X	Spring-Rod Brake 2 00 Zinc	85	150360	Nut Lock Center 1/4-28
26	19131316	Washer 13/32 x 13/16 x 16 Ga.	89	192053X428	Console Shift
27	76020412	Pin Cotter 1/8 x 3/4 Cad	96	4497H	Retainer Spring 1"
28	175765	Rod Brake Parking LT/YT	112	19091210	Washer 9/32 x 3/4 x 10 Ga.
29	71673	Cap Brake Parking Black	113	127285X	Strap Torque 90 Degrees LH
30	174973	Bracket Transmission	116	72140608	Bolt Rdhd Sq Neck 3/8-16 x 1
32	74760512	Bolt Fin Hex 5/16-18 x 3/4	120	73900600	Nut Lock Flg 3/8-16
34	175578	Shaft Asm Pedal Foot Nibbed	150	175456	Spacer Retainer Lt
35	120183X	Bearing Nylon Blk 629 Id	151	19133210	Washer 13/32 x 2 x 10 Ga.
36	19211616	Washer 21/32 x 1 x 16 Ga.	156	166002	Washer Srrrtd 5/16 ID x 1.0 x .125
37	1572H	Pin Roll 3/16 x 1"	158	165589	Bracket Shift Mount
38	179114	Pulley Composite Flat	159	183900	Hub Shift
39	72110622	Bolt 3/8-16 x 2-3/4	161	72140406	Bolt 1/4-20 x 3/4 Gr. 5
41	175556	Keeper Belt Idler	162	73680400	Nut Crownlock 1/4-20 unc
47	127783	Pulley Idler V Groove Plastic	163	74780416	Bolt Hex Fin 1/4-20 unc x 1 Gr. 5
48	154407	Bellcrank Clutch Grnd Drv STL	165	165623	Bracket Pivot Lever
49	123205X	Retainer Belt Style Spring	166	17490510	Screw 5/16-18 x 5/8
50	72110612	Bolt Carr Sh 3/8-16 x 1-1/2 Gr. 5	168	165492	Bolt Shoulder 5/16-18 x .561
51	73680600	Nut Crownlock 3/8-16 unc	169	165580	Plate Fastening
52	73680500	Nut Crownlock 5/16-18 unc	170	187414	Keeper, Belt Transaxle
53	199652	Link Clutch	197	169613	Nyliner Snap-In 5/8
55	105709X	Spring Return Clutch 6 75	198	169593	Washer Nylon
56	17060620	Screw 3/8-16 x 1-1/4	202	72110614	Bolt Carr Sh 3/8-16 x 1-3/4 Gr. 5
57	138255	V-Belt Ground Drive 95.25	212	145212	Nut Hex Flg Lock
59	169691	Keeper Belt Chassis Span Ctr	263	17000612	Screw Hexwsh Thdrol 3/8-16 x 3/4
61	17120614	Screw 3/8-16 x .875	268	182402	Guard Muffler
			275	19131614	Washer 13/32 x 1 x 14

NOTE: All component dimensions given in U.S. inches
1 inch = 25.4 mm

REPAIR PARTS

TRACTOR- -MODEL NO. 917. 257400

STEERING ASSEMBLY



REPAIR PARTS

TRACTOR- -MODEL NO. 917. 257400

STEERING ASSEMBLY

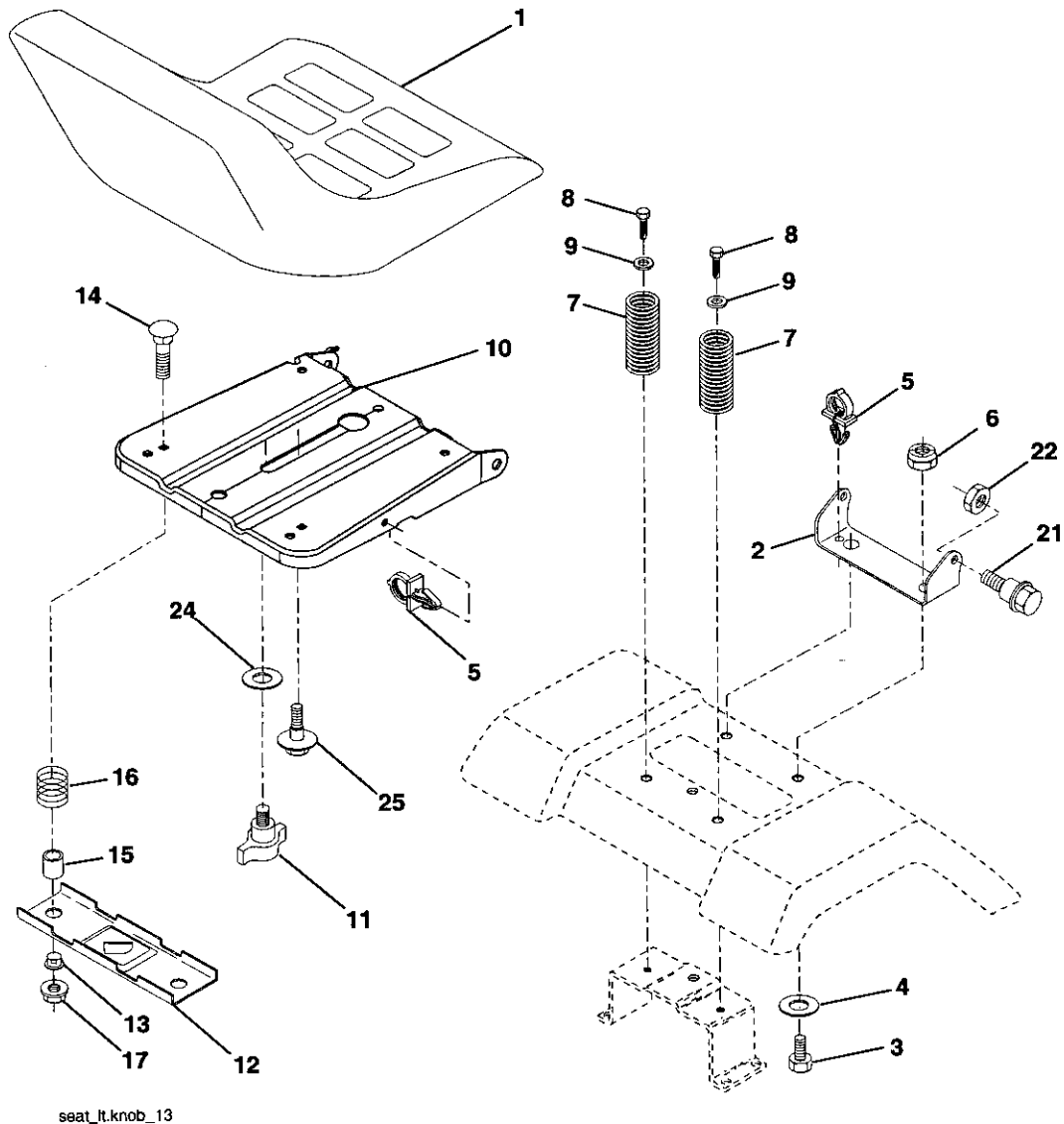
KEY NO.	PART NO.	DESCRIPTION
1	186780	Steering Wheel
2	195673	Axle Assembly
3	169840	Spindle Assembly, L.H.
4	169839	Spindle Assembly, R.H.
5	6266H	Bearing, Race, Thrust, Hardened
6	121748X	Washer 25/32 x 1-5/8 x 16 Ga.
7	19272016	Washer 27/32 x 1-1/4 x 16 Ga.
8	12000029	Ring, Klip
9	3366R	Bearing Col. Strg.
10	175121	Draglink
11	STD551137	Washer, Lock
13	136518	Spacer Brg Axle Front
15	145212	Nut, Hexflange Lock
17	190753	Shaft, Steering
26	126847X	Bushing, Link, Drag
28	19131416	Washer 13/32 x 7/8 x 16 Ga.
29	17000612	Screw 3/8-16 x 3/4
30	STD561210	Pin
32	192757	Rod, Tie
34	10040500	Washer Lock Hvy Hlcl Spr. 5/16
36	155099	Bushing, Steering
37	152927	Screw
38	186781	Insert, Steering Wheel
39	19113812	Washer 11/32 ID x 2-3/8 OD x 12 Ga.
40	73540600	Nut Crownlock 3/8-24
41	186737	Adaptor, Steering Wheel
42	145054x428	Boot, Steering Shaft
43	121749X	Washer 25/32 x 1-1/4 x 16 Ga.
44	190752	Extension Shaft Steering
46	121232X	Cap, Spindle
65	160367	Spacer Brace Axle
67	72110618	Bolt Rdhd Sqnk 3/8-16 x 2-1/4
68	169827	Axle, Brace
71	175146	Steering Asm
82	199978	Bracket Susp Chassis Front
88	175118	Bolt Shoulder 7/16-20
91	175553	Clip Steering
95	188967	Washer Hardened .793 x 1.637 x .060
97	74780564	Bolt 5/16-18 unc x 4 Gr. 5

NOTE: All component dimensions give in U.S. inches
1 inch = 25.4 mm

REPAIR PARTS

TRACTOR- -MODEL NO. 917. 257400

SEAT



seat_lt.knob_13

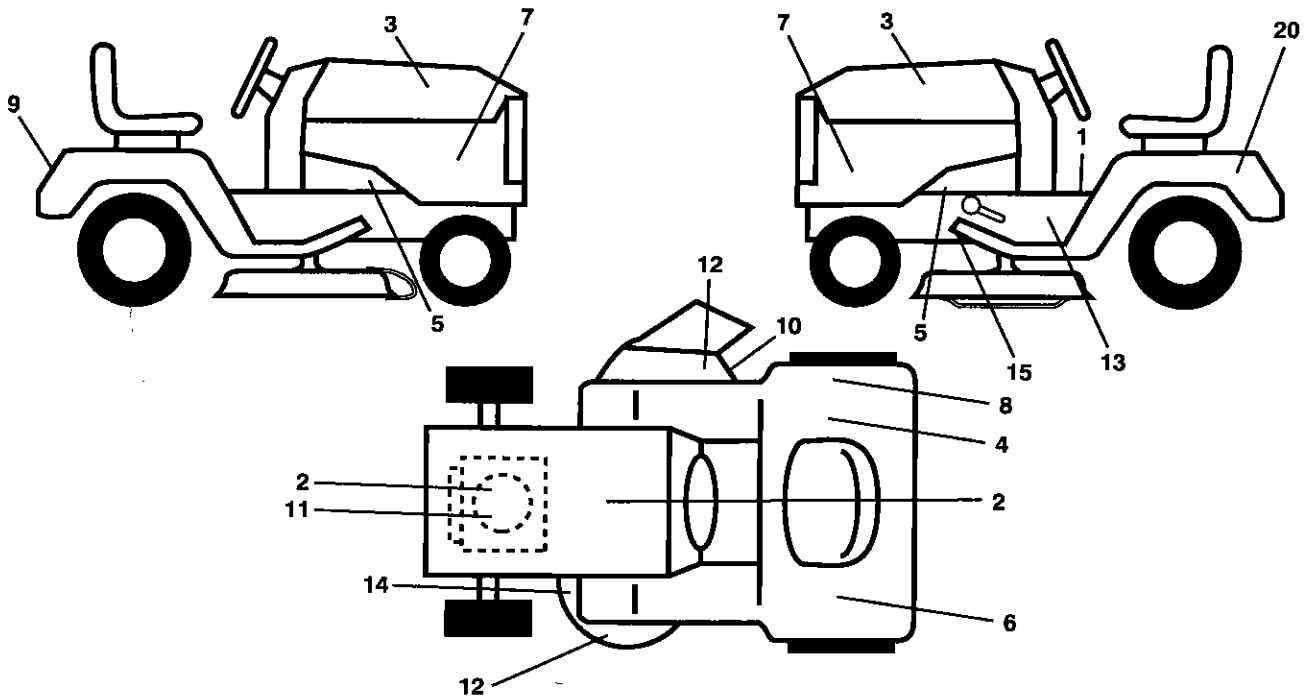
KEY NO.	PART NO.	DESCRIPTION	KEY NO.	PART NO.	DESCRIPTION
1	188709	Seat	12	174648	Bracket, Switch Mounting
2	140551	Bracket, Pivot, Seat	13	121248X	Bushing, Snap
3	71110616	Bolt	14	72050412	Bolt, Carriage 1/4-20 x 1-1/2
4	19131610	Washer 13/32 x 1 x 10 Ga.	15	134300	Spacer, Split .28 x .88
5	145006	Clip, Push-In Hinged	16	121250X	Spring
6	STD541437	Nut	17	123976X	Locknut, Flange 1/4 Gr. 5
7	124181X	Spring, Seat	21	171852	Bolt, Shoulder 5/16-18 unc
8	17000616	Screw 3/8-16 x 1-1/2	22	STD541431	Nut
9	19131614	Washer 13/32 x 1 x 14 Ga.	24	19171912	Washer 17/32 x 1-3/16 x 12 Ga.
10	195530	Pan, Seat	25	127018	Bolt Shoulder 5/16-18 x .62
11	166369	Knob Seat			

NOTE: All component dimensions give in U.S. inches
1 inch = 25.4 mm

REPAIR PARTS

TRACTOR- -MODEL NO. 917. 257400

DECAL

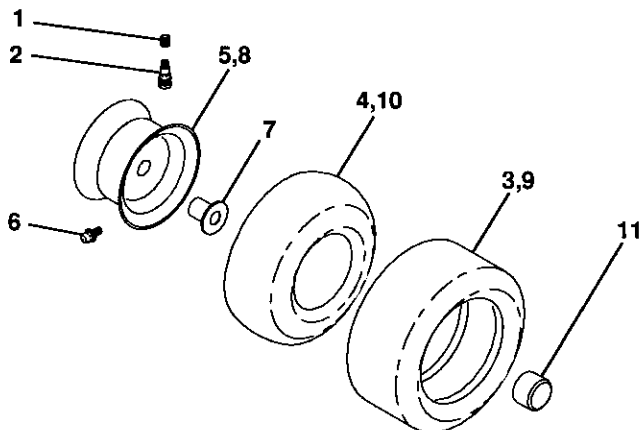


KEY NO.	PART NO.	DESCRIPTION
1	400389	Decal, Oper. Instr.
2	412646	Decal, HP Engine
3	411697	Decal, Hood, R.H./L.H.
4	140837	Decal, Saddle
5	159736	Decal, Chassis Hot Muffler
6	159737	Decal, Brake Clutch
7	404492	Decal, PNL Side
8	180432	Decal, Fender DB
9	411697	Decal, Fender Craftsman/Hood
10	182166	Decal, Cuttingfing
11	196841	Decal, Warning Eng.
12	196357	Decal, Deflect
13	186787	Decal, Chassis
14	160396	Decal, V-Belt Schematic

KEY NO.	PART NO.	DESCRIPTION
15	197490	Decal, V-Belt Drive Sch
20	145005	Decal, Battery Dngr/Psn Eng
--	138311	Decal, Lift Handle
--	162598	Decal, Drawbar
--	179768X428	Pad, Footrest LH
--	179769X428	Pad, Footrest RH
--	412925	Manual, Operator's Euro
--	412926	Manual, Operator's Scan
--	412927	Manual, Operator's E-Bloc
--	412928	Manual, Operator's Baltic
--	412929	Manual, Parts

NOTE: All component dimensions give in U.S. inches
1 inch = 25.4 mm

WHEELS & TIRES



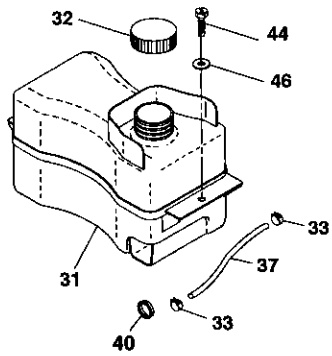
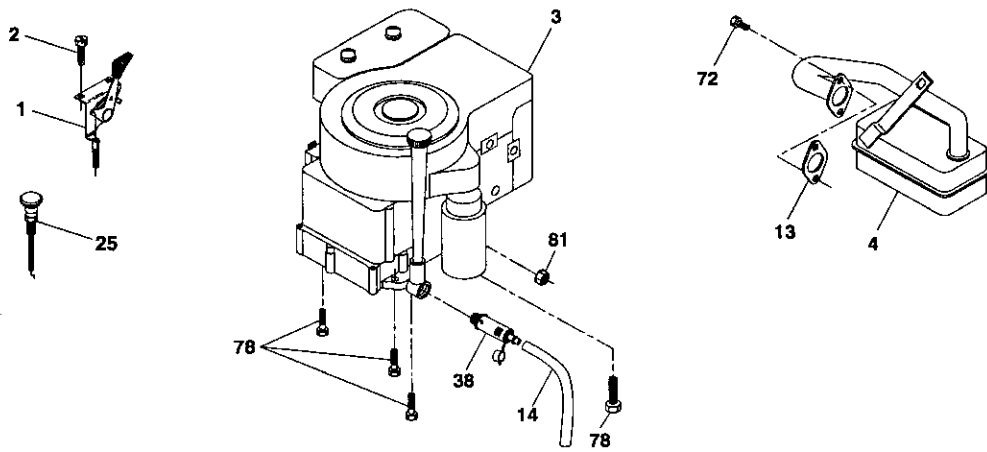
KEY NO.	PART NO.	DESCRIPTION
1	59192	Valve Cap, Tire
2	65139	Stem, Valve
3	106222X	Tire, Front
4	59904	Tube, Front Tire (Not Provided, Service Item Only)
5	106732X624	Rim, Front
6	278H	Fitting, Grease (Front Wheel Only)
7	9040H	Bearing, Flange (Front Wheel Only)
8	106108X624	Rim, Rear
9	106268X	Tire, Rear
10	7152J	Tube, Rear Tire (Not Provided, Service Item Only)
11	104757X428	Cap, Axle
--	144334	Sealant, Tire 10 oz.

NOTE: All component dimensions give in U.S. inches
1 inch = 25.4 mm

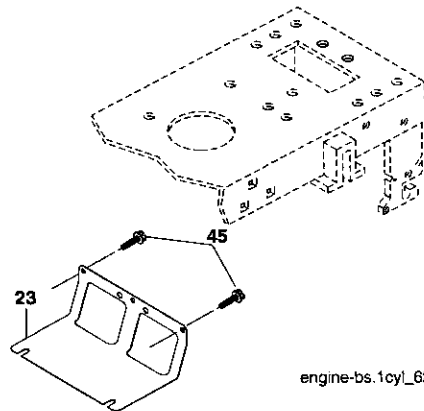
REPAIR PARTS

TRACTOR- -MODEL NO. 917. 257400

ENGINE



29
OPTIONAL EQUIPMENT
Spark Arrester



engine-bs.1cyl_62

REPAIR PARTS

TRACTOR- -MODEL NO. 917. 257400

ENGINE

KEY NO.	PART NO.	DESCRIPTION	KEY NO.	PART NO.	DESCRIPTION
1	170545	Control, Throttle/Choke	32	197725	Cap Assembly, Fuel
2	17720408	Screw, Hex Head, Thread Cutting 1/4-20 x 1/2	33	123487X	Clamp, Hose
3	-----	Engine, Briggs Model No. 31C707-0240 B1 (See Engine Breakdown)	37	137040	Line, Fuel
4	137352	Muffler	38	181654	Plug, Drain Oil Easy
13	165291	Gasket	40	124028X	Bushing Snap
14	148456	Tube Drain Oil Easy	44	17670412	Screw, Hex Washer Head, Thd., Roll. 1/4-20 x 3/4
23	169837	Shield Brn/Dbr Guard	45	17000612	Screw Hex Wsh Thdr 3/8-16 x 3/4
25	187770X428	Control Choke	46	19091416	Washer 9/32 x 7/8 x 16 Ga.
29	137180	Arrestor, Spark	72	192334	Screw Socket Head Cap 5/16-18 x 3/4
31	407516	Tank, Fuel	78	17060620	Screw 3/8-16 x 1-1/4
			81	73510400	Nut Keps Hex 1/4-20 unc

NOTE: All component dimensions give in U.S. inches
1 inch = 25.4 mm

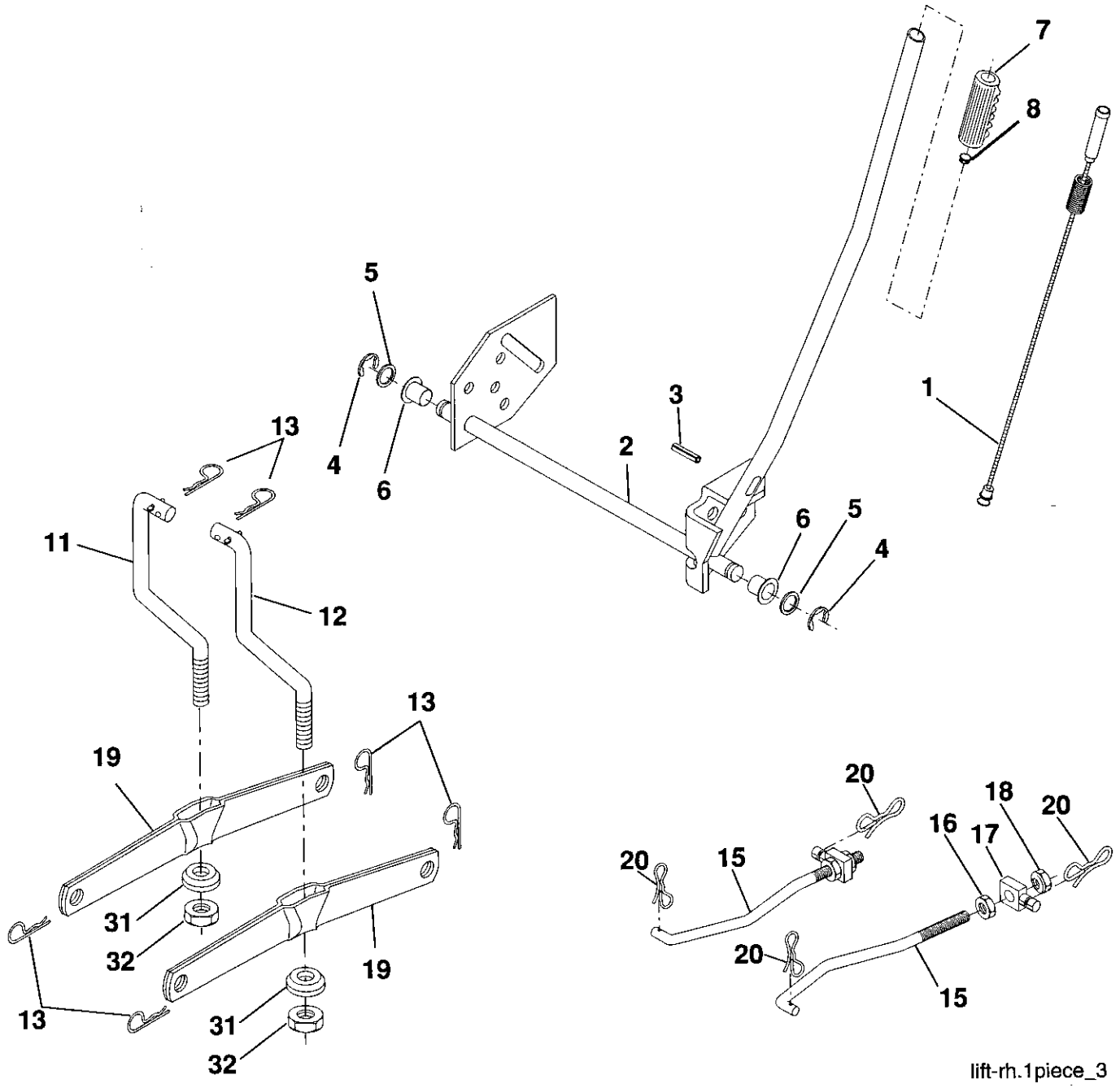
Engine Power Rating Information

The gross power rating for individual gas engine models is labeled in accordance with SAE (Society of Automotive Engineers) code J11940 (Small Engine Power & Torque Rating Procedure), and rating performance has been obtained and corrected in accordance with SAE J1995 (Revision 2002-5). Actual gross engine power will be lower and is affected by, among other things, ambient operating conditions and engine-to-engine variability. Given both the wide array of products on which engines are placed and the variety of environmental issues applicable to operating the equipment, the gas engine will not develop the rated gross power when used in a given piece of power equipment (actual "on-site" or net horsepower). This difference is due to a variety of factors including, but not limited to, accessories (air cleaner, exhaust, charging, cooling, carburetor, fuel pump, etc.), application limitations, ambient operating conditions (temperature, humidity, altitude), and engine-to-engine variability. Due to manufacturing and capacity limitations, Briggs & Stratton may substitute an engine of higher rated power for this Series engine.

REPAIR PARTS

TRACTOR- -MODEL NO. 917. 257400

MOWER LIFT



lift-rh.1piece_3

REPAIR PARTS

TRACTOR- -MODEL NO. 917. 257400

MOWER LIFT

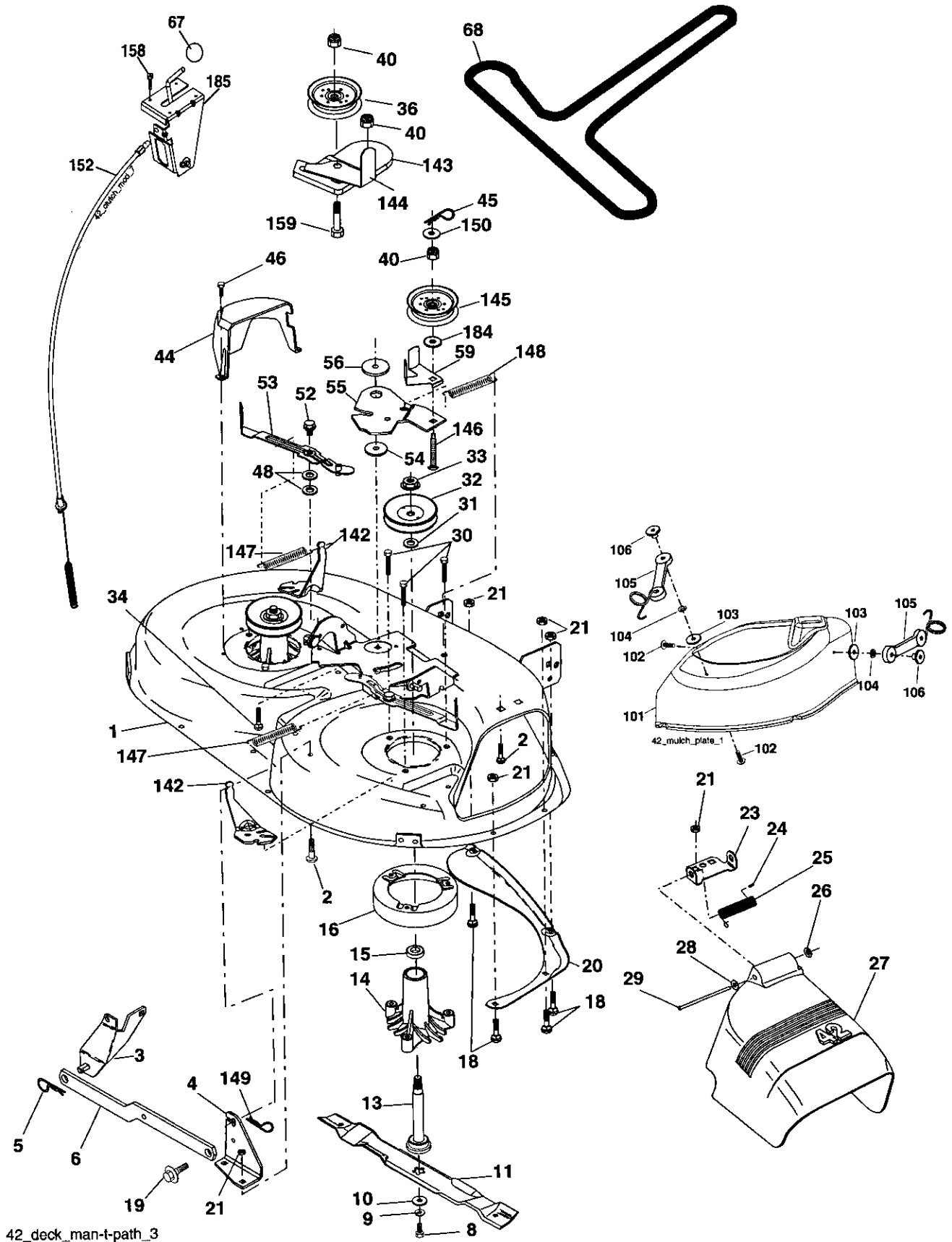
KEY NO.	PART NO.	DESCRIPTION
1	159460	Lift Lever Inner Wire Assembly
2	159471	Shaft Assembly, Lift
3	105767X	Pin, Groove
4	12000002	E-Ring
5	19211621	Washer 21/32 x 1 x 21 Ga.
6	120183X	Bearing, Nylon
7	125631X	Grip, Handle, Fluted
8	122365X	Button, Plunger, Red
11	139865	Link, Lift, L.H.
12	139866	Link, Lift, R.H.
13	STD624008	Retainer Spring
15	173288	Link, Front
16	73350800	Nut, Hex, Jam 1/2-13 unc
17	175689	Trunnion
18	73800800	Locknut, Hex, with Washer Insert 1/2-13 unc
19	139868	Arm, Suspension, Rear
20	194209	Pin Cotter 7/16 Bow Tie Lock
31	169865	Bearing, Pvt, Lift
32	73540600	Nut, Crownlock 3/8-24

NOTE: All component dimensions give in U.S. inches
1 inch = 25.4 mm

REPAIR PARTS

TRACTOR- -MODEL NO. 917. 257400

MOWER



42_deck_man-t-path_3

REPAIR PARTS

TRACTOR- -MODEL NO. 917. 257400

MOWER

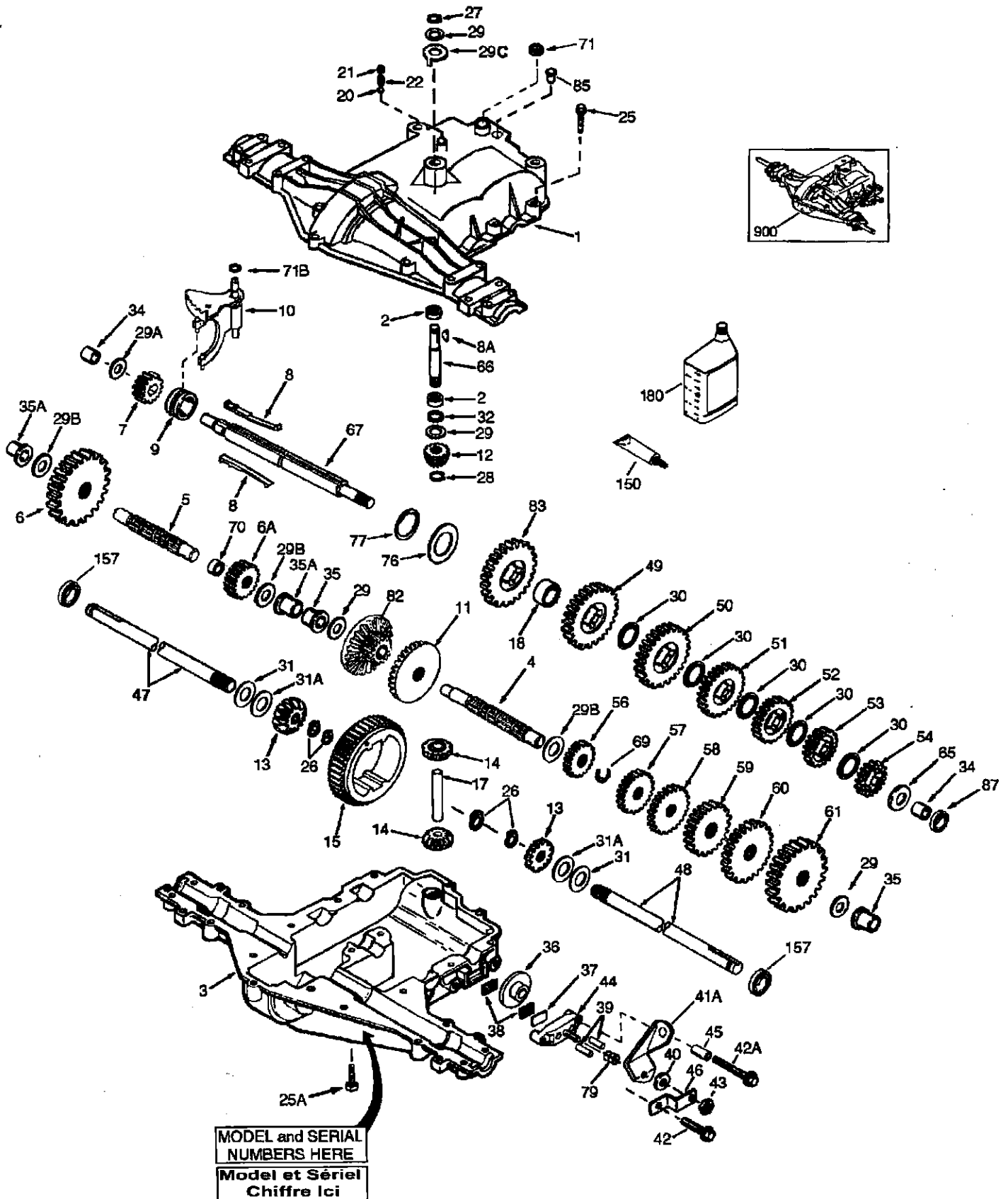
KEY NO.	PART NO.	DESCRIPTION	KEY NO.	PART NO.	DESCRIPTION
1	165892	Mower Deck Assembly, 42"	46	137729	Screw, Thd. Roll 1/4-20 x 5/8
2	STD533107	Bolt	48	133944	Washer, Hardened
3	138017	Bracket Assembly, Sway Bar, Front	52	139888	Bolt, Shoulder 5/16-18 unc
4	165460	Bracket Sway Bar 38/42" eck	53	184907	Arm Assembly, Pad, Brake
5	STD624008	Retainer Spring	54	178515	Washer, Hardened
6	178024	Bar Sway Deck	55	155046	Arm, Idler
8	850857	Bolt, Hex 3/8-24 x 1.25 Gr. 8	56	165723	Spacer, Retainer
9	STD551137	Washer, Lock	59	141043	Guard, TUV Idler
10	140296	Washer, Hardened (The following blades are available)	67	149846	Knob Custom Oval
11	134149	Blade, Mulching Std. (For mulching mowers only)	68	180215	V-Belt
--	139775	Blade, 42" Mulching Premium (For better wear when mulching)	101	193107	Cover Mulching
--	138971	Blade, 42" Hi-Lift (For bagging or discharging)	102	71081010	Screw Pan Hd 10-24 x 5/8
13	137645	Shaft Assembly, Mandrel, Vented	103	19061216	Washer #10
14	128774	Housing, Mandrel, Vented	104	10071000	Washer Lock #10
15	110485X	Bearing, Ball, Mandrel	105	160793	Latch Asm
16	174493	Stripper, Mower Deck	106	2029J	Nut Weld
18	72140505	Bolt, Carriage 5/16-18 x 5/8	142	165890	Arm Spring Brake Mower
19	132827	Bolt, Shoulder	143	157109	Bracket Arm Idler 42"
20	159770	Baffle, Vortex	144	158634	Keeper Belt 42" Clutch Cable
21	STD541431	Nut Crownlock 5/16-18 unc	145	165888	Pulley Idler Flat
23	177563	Bracket, Deflector	146	171977	Bolt Carriage Idler
24	105304X	Cap, Sleeve	147	179748	Spring Extension
25	123713X	Spring, Torsion, Deflector	148	169022	Spring Return Idler
26	110452X	Nut, Push	149	165898	Retainer Spring Yellow Zinc
27	130968X428	Shield, Deflector	150	19091210	Washer 9/32 x 3/4 x 10 Ga.
28	19111016	Washer 11/32 x 5/8 x 16 Ga.	152	181555	Cable Clutch 42 In
29	131491	Rod, Hinge	158	17720408	Screw Hex Thd Cut 1/4-20 x 1/2
30	173984	Screw Thdrol DOD PT Hex	159	72140614	Bolt Rdhd Sqn 3/8-16 unc x 1-3/4
31	187690	Washer, Spacer	184	19131410	Washer 13/32 x 7/8 x 10 Ga.
32	153535	Pulley, Mandrel	185	188234	Head Assy. Cable Clutch
33	400234	Nut, Toplock, Flanged	--	130794	Mandrel Assembly (Includes housing, shaft and shaft hardware only-pulley not included)
34	72110612	Bolt Carr. Sh. 3/8-16 x 1-1/2 Gr. 5	--	181268	Replacement Mower, Complete
36	131494	Pulley, Idler, Flat			
40	73900600	Nut Lock Flg. 3/8-16 unc			
44	140088	Guard, Mandrel, L.H.			
45	STD624003	Retainer			

NOTE: All component dimensions give in U.S. inches
1 inch = 25.4 mm

REPAIR PARTS

TRACTOR- -MODEL NO. 917. 257400

PEERLESS TRANSAXLE - MODEL NUMBER 206-545



REPAIR PARTS

TRACTOR- -MODEL NO. 917. 257400

PEERLESS TRANSAXLE - MODEL NUMBER 206-545

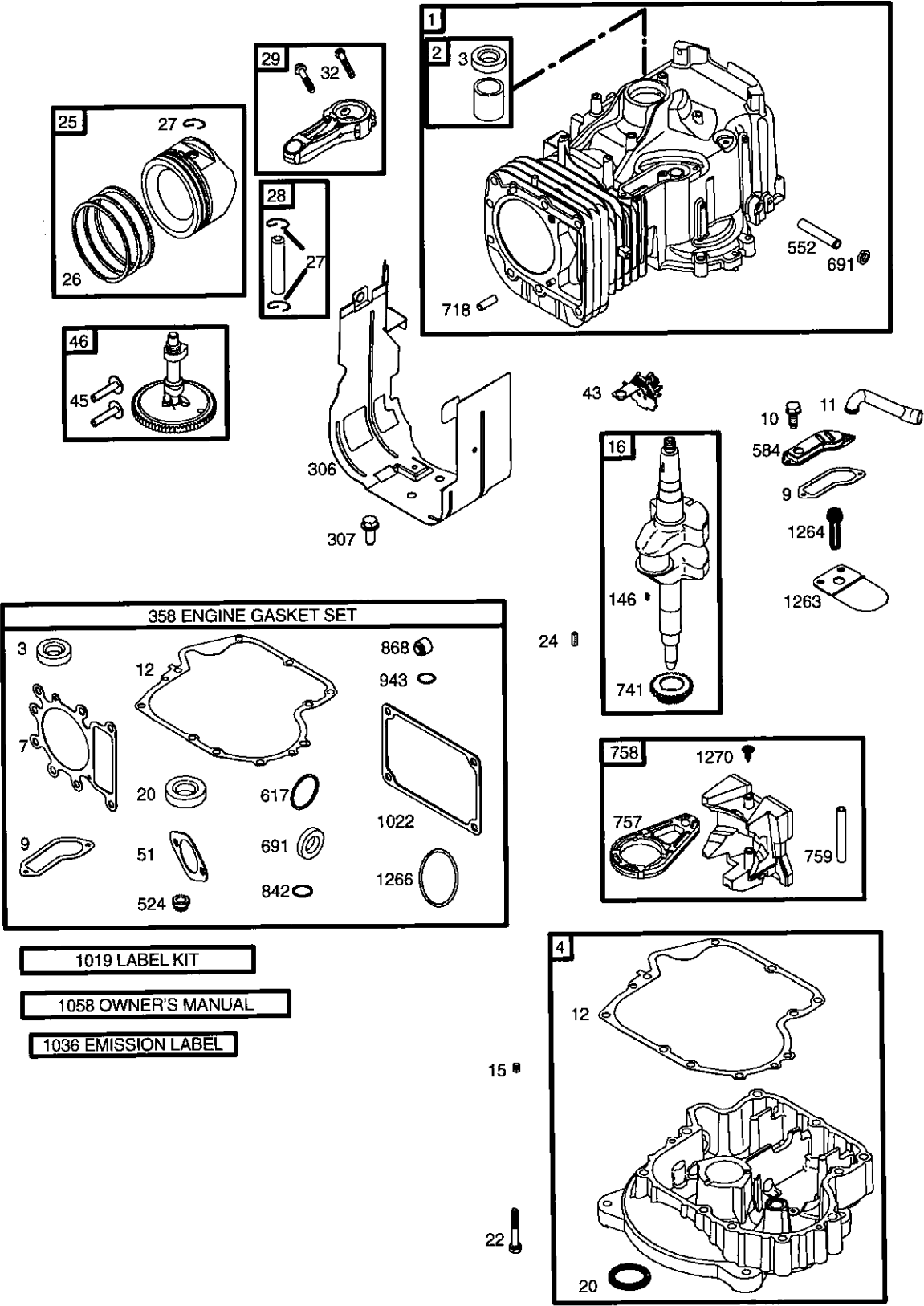
REF NO.	PART NO.	DESCRIPTION	REF NO.	PART NO.	DESCRIPTION
1	772147	Transaxle Cover	41A	790079	Brake Lever
2	780086A	Needle Bearing 5/8"	42	792073A	Screw 1/4 - 20 x 1-1 /4"
3	770128	Transaxle Case	42A	792085A	Screw 1/4 - 20 x 2 1/4"
4	776395	Countershaft	43	792075	Locknut 5 / 16 - 24
5	776409	Output Shaft	44	790025	Brake Pad Holder
6	778364	Spur Gear (38 teeth)	45	786066	Spacer .2625 x 1.0
6A	778369	Spur Gear (15 teeth)	46	786086	Brake Lever Bracket
7	778330	Spur Gear (11 teeth)	47	774690	Axle (11-15 / 16" Long)
8	792180	Shift Key	48	774691	Axle (16 - 1 / 2" long)
8A	792047	Woodruff Key #9	49	778356	Spur Gear (29 teeth)
9	784352	Shift Collar	50	778338	Spur Gear (27 teeth)
10	784378	Shift Rod & Fork	51	778354	Spur Gear (23 teeth)
11	778334	Bevel Gear (30 teeth)	52	778352	Spur Gear (19 teeth)
12	778309	Input Bevel Pinion (13 teeth)	53	778350	Spur Gear (16 teeth)
13	778368	Bevel Gear (13 teeth) (Include. 14)	54	778346	Spur Gear (15 teeth)
14	778368	Bevel Pinion (13 teeth) (Include. 13)	56	778355	Spur Gear (11 teeth)
15	778370	Ring Gear (43 teeth)	57	778337	Spur Gear (13 teeth)
17	786188	Drive Pin	58	778353	Spur Gear (17 teeth)
18	786102	Spacer 1.130 X .695	59	778351	Spur Gear (21 teeth)
20	792077A	Ball 5/16" dia	60	778349	Spur Gear (24 teeth)
21	792078	Set Screw 3/8 - 16 x 3/8"	61	778345	Spur Gear (25 teeth)
22	792079	Spring .310 OD x .625 L	65	780189	Flat Washer .563 ID x .062W
25	792073A	Screw 1/4 - 20 x 1-1/4"	66	776422	Input Shaft
25A	792177	Screw 1/4-20 x 1-3/8"	67	776396	Shifter & Brake Shaft
26	792125	Retaining Ring (pkg of 2)	69	792170	Retaining Ring
27	792035	Retaining Ring	70	786187	Spacer .890
28	788040	Retaining Ring	71	788069	Square Cut Ring
29	780072	Thrust Washer .627 ID x .031W	71B	788092	"O" Ring
29A	780160	Thrust Washer .762 ID x .031W	76	780090	Flat Washer 1.128 ID x .058W
29B	780051	Thrust Washer .762 ID x .031W	77	788078A	Inverted Retaining Ring
29C	780199	Anti-Rotation Washer .632	79	792144	Spring .430 OD x .5000 L
30	780108	Cup Washer 1.127 ID x .032W	82	778333	Bevel & Spur Gear (30 & 13 teeth)
31	780001	Flat Washer .750 ID x .056W (Use As Needed)	83	778338	Spur Gear (27 teeth)
31A	780195	Flat Washer .750 ID x .062W	85	792154	Oil Fill Plug
32	788083	Oil Seal 5/8"	87	788089A	Oil Seal 9 / 16"
34	780194	Bushing .563	150	788093A	Liquid Gasket RTV Silicone
35	780193	Flanged Bushing 5 / 8" ID	157	788088A	Oil Seal 3 / 4"
35A	780197	Flanged Bushing .751	180	730229A	Gear Oil 80W90
36	790075	Brake Disk	900	794712	Replacement MST - 206-545C Transaxle
37	790007	Brake Pad Plate			
38	799021	Brake Pad (pkg of 2)			
39	786026	Dowel Pin			
40	792076A	Flat Washer .312 ID x .059W			

NOTE: All component dimensions given in U.S. inches
1 inch = 25.4 mm

REPAIR PARTS

TRACTOR- -MODEL NO. 917. 257400

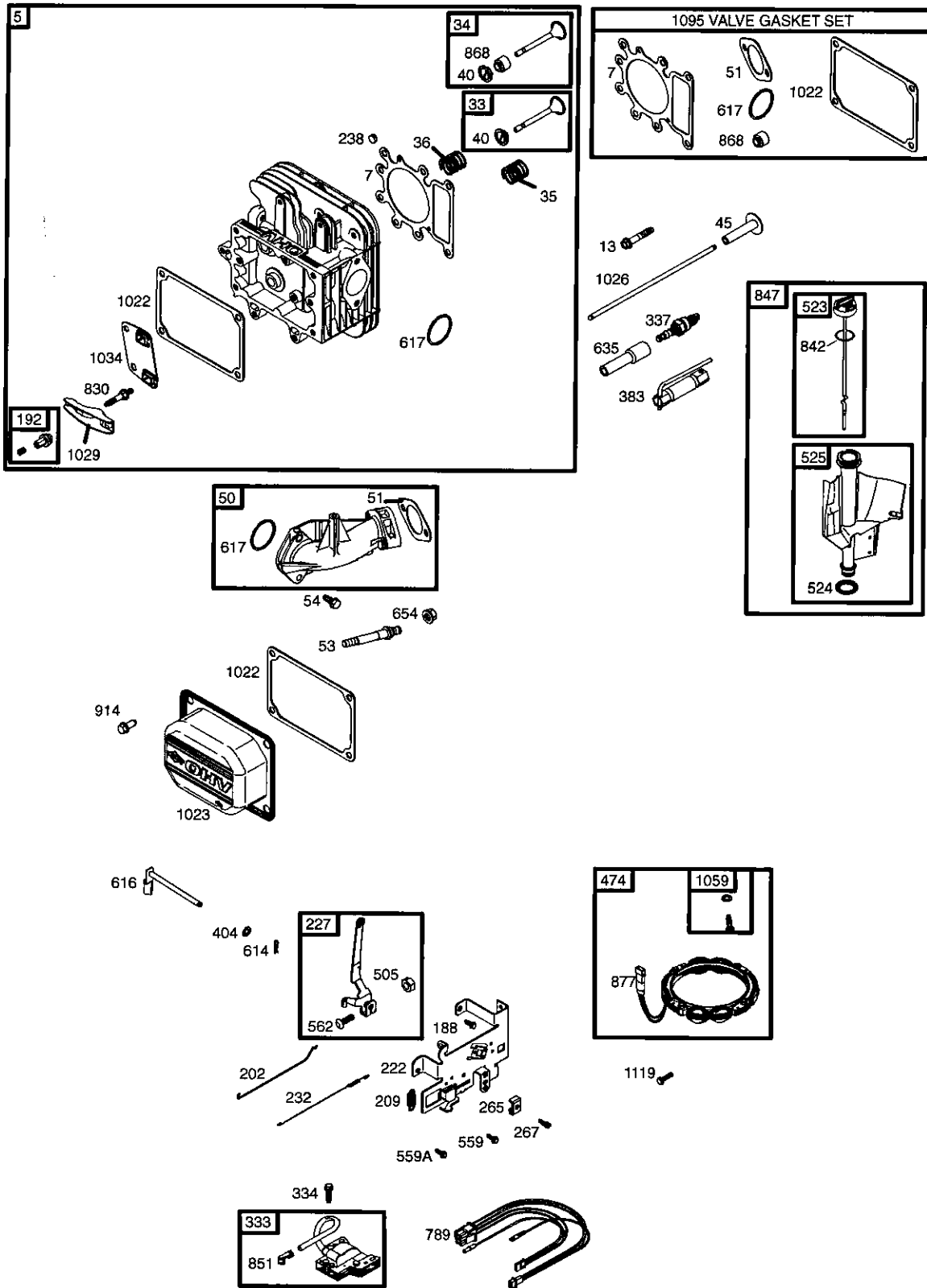
BRIGGS & STRATTON ENGINE - - MODEL NUMBER 31C707, TYPE NUMBER 0240-B1



REPAIR PARTS

TRACTOR- -MODEL NO. 917. 257400

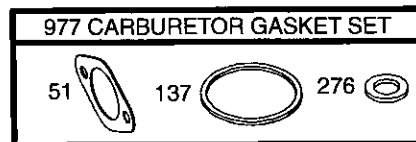
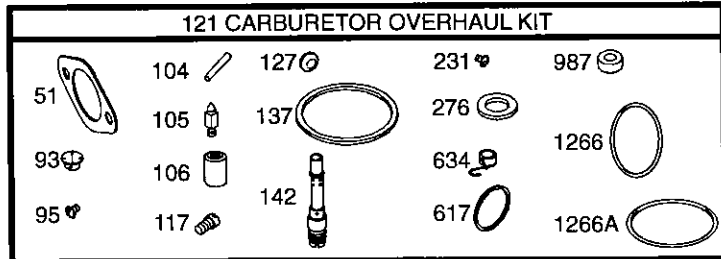
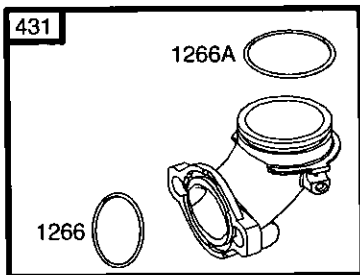
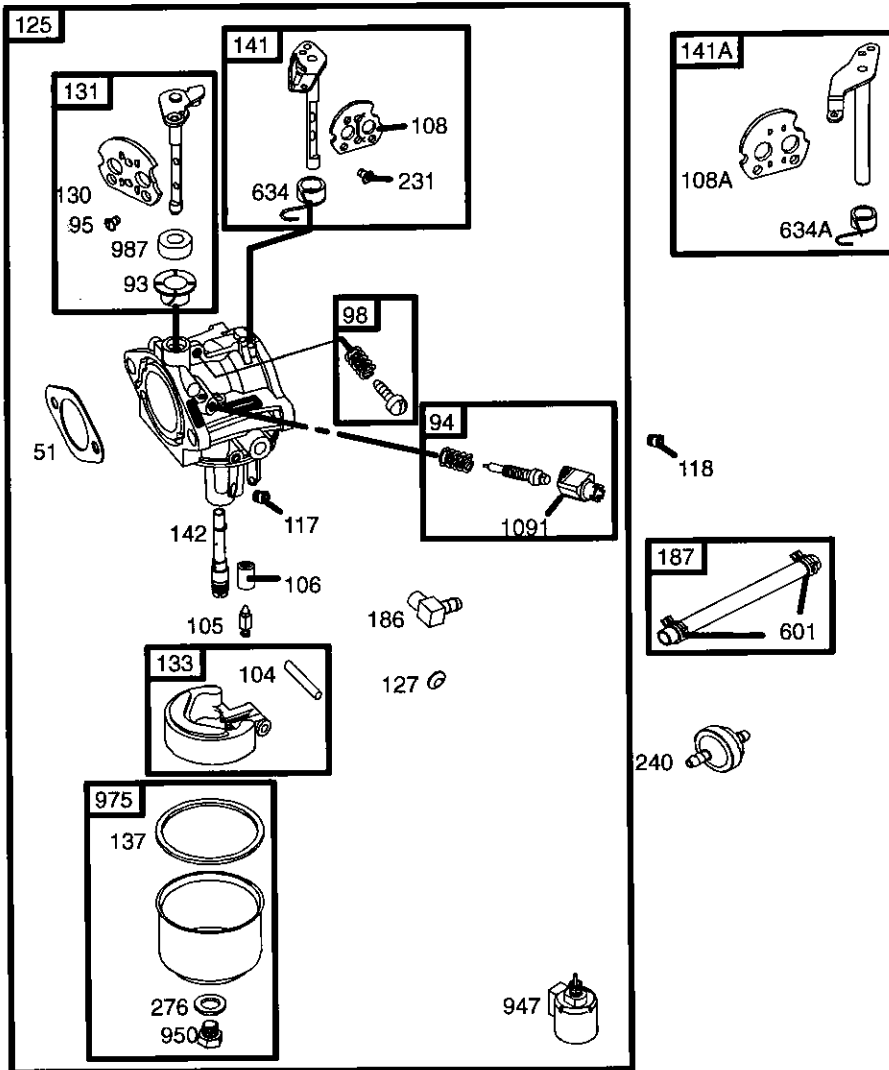
BRIGGS & STRATTON ENGINE - - MODEL NUMBER 31C707, TYPE NUMBER 0240-B1



REPAIR PARTS

TRACTOR- -MODEL NO. 917. 257400

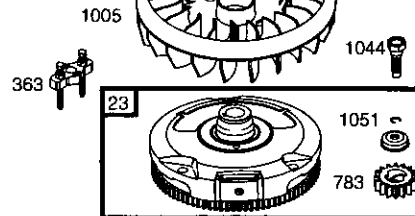
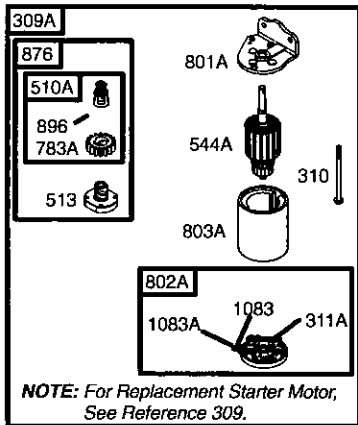
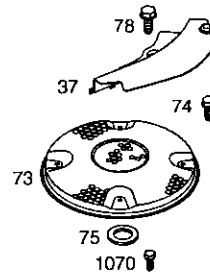
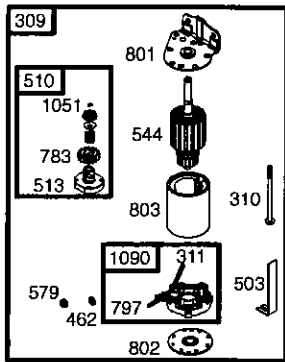
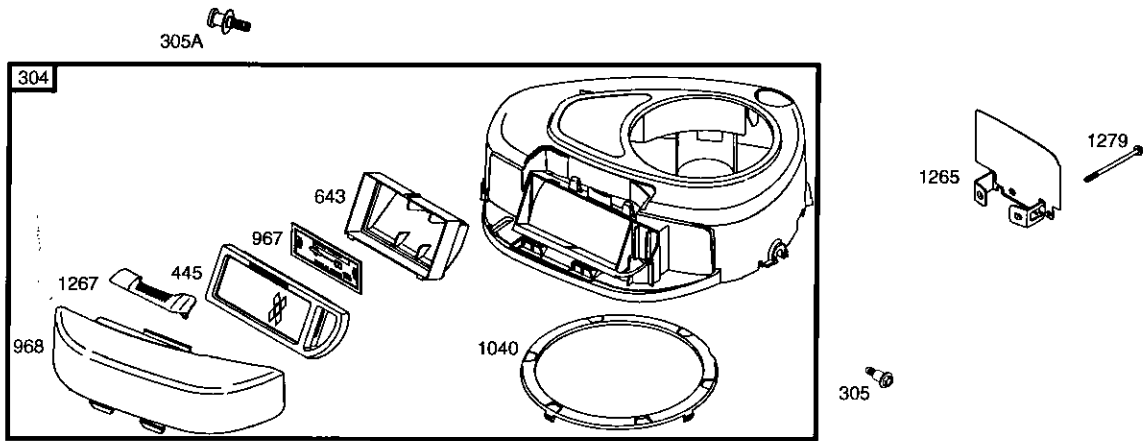
BRIGGS & STRATTON ENGINE - - MODEL NUMBER 31C707, TYPE NUMBER 0240-B1



REPAIR PARTS

TRACTOR- -MODEL NO. 917. 257400

BRIGGS & STRATTON ENGINE - - MODEL NUMBER 31C707, TYPE NUMBER 0240-B1



REPAIR PARTS

TRACTOR- -MODEL NO. 917. 257400

BRIGGS & STRATTON ENGINE - - MODEL NUMBER 31C707, TYPE NUMBER 0240-B1

KEY PART NO. NO.	DESCRIPTION
1	697174 Cylinder Assembly
2	399265 Kit-Bushing/Seal (Magneto Side)
3	391086 • Seal-Oil (Magneto Side)
4	697106 Sump-Engine
5	698147 Head-Cylinder
7	692410 •+ Gasket-Cylinder Head
9	697109 • Gasket-Breather
10	697157 Screw (Breather Assembly)
11	697113 Tube-Breather
12	697110 • Gasket-Crankcase
13	690360 Screw (Cylinder Head)
15	690946 Plug-Oil Drain
16	697127 Crankshaft
20	690947 • Seal-Oil (PTO Side)
22	692125 Screw (Crankcase Cover/Sump)
23	693557 Flywheel
24	222698 Key-Flywheel
25	697159 Piston Assembly (Standard)
	697160 Piston Assembly (.010" Oversize)
	697162 Piston Assembly (.020" Oversize)
	697163 Piston Assembly (.030" Oversize)
26	697164 Ring Set (Standard)
	697165 Ring Set (.010" Oversize)
	697171 Ring Set (.020" Oversize)
	697172 Ring Set (.030" Oversize)
27	697100 Lock-Piston Pin
28	697099 Pin-Piston
29	697126 Rod-Connecting (Standard)
32	692852 Screw (Connecting Rod)
33	495856 Valve-Exhaust
34	495857 Valve-Intake
35	691279 Spring-Valve (Intake)
36	691279 Spring-Valve (Exhaust)
37	697352 Guard-Flywheel
40	691752 Retainer-Valve
43	691968 Slinger-Governor/Oil
45	690564 Tappet-Valve
46	697687 Camshaft
48	697761 Short Block (31C707-0240-E2 Replacement Engine-art not available)
50	690193 Manifold-Intake
51	692137•Ø‡+ Gasket-Intake
53	690227 Stud (Carburetor)
54	691148 Screw (Intake Manifold)
73	697384 Screen-Rotating
74	697987 Screw (Rotating Screen)
75	690582 Washer (Flywheel)
78	691003 Screw (Flywheel Guard)
93	690602 Ø Bushing-Throttle Shaft
94	498030 Kit-Idle Mixture
95	691636 Screw (Throttle Valve)
98	495800 Kit-Idle Speed
104	690525 Ø Pin-Float Hinge
105	231855 Ø Valve-Float Needle
106	690577 Ø Seat-Inlet
108	690464 Valve-Choke (Manual Choke)
108A	692344 Valve-Choke (Choke A Matic)
117	694352 Ø Jet-Main (Standard)

KEY PART NO. NO.	DESCRIPTION
118	697492 Jet-Main (High Altitude)
121	697241 Kit-Carburetor Overhaul
125	697190 Carburetor
127	695005 Plug-Welch
130	691750 Valve-Throttle
131	494379 Kit-Throttle Shaft
133	494381 Float-Carburetor
137	281165Ø‡ Gasket-Float Bowl
141	495097 Kit-Choke Shaft (Manual Choke)
141A	495931 Kit-Choke Shaft (Choke A Matic)
142	697140 Ø Nozzle-Carburetor
146	691639 Key-Timing
186	692317 Connector-Hose
187	691050 Line-Fuel (Cut to Required Length)
188	691693 Screw (Control Bracket)
192	691986 Adjuster-Rocker Arm
202	691841 Link-Mechanical Governor
209	692208 Spring-Governor
222	694042 Bracket-Control
227	691374 Lever-Governor Control
231	691636 Screw (Choke Valve)
232	691842 Spring-Governor
238	691843 Cap-Valve
240	394358 Filter-Fuel
265	691024 Clamp-Casing
267	695134 Screw (Casing Clamp)
276	692255Ø‡ Washer-Sealing
304	698402 Housing-Blower
305	697102 Screw (Blower Housing)
305A	697103 Screw (Blower Housing)
306	697107 Shield-Cylinder
307	691003 Screw (Cylinder Shield)
309	693551 Motor-Starter
309A	--- Motor-Starter (For Replacement Starter Motor, See Reference 309)
310	690323 Bolt (Starter Motor)
311	497608 Brush Set
311A	395538 Brush Set
333	492341 Armature-Magneto
334	691061 Screw (Magneto Armature)
337	691043 Plug-Spark
358	697191 Gasket Set-Engine
363	19203 Flywheel Puller
383	89838 Wrench-Spark Plug
404	691691 Washer (Governor Crank)
431	697122 Elbow-Intake
	RPM Settings: Low Speed: 1900-2100 High Speed: 3000-3200
	• Included in Engine Gasket Set, Key. No. 358
	Ø Included in Carburetor Overhaul Kit, Key. No. 121
	‡ Included in Carburetor Gasket Set, Key. No. 977
	+ Included in Valve Gasket Set, Key. No. 1095

NOTE: All component dimensions given in U.S. inches 1 inch = 25.4 mm

REPAIR PARTS

TRACTOR- -MODEL NO. 917. 257400

BRIGGS & STRATTON ENGINE - - MODEL NUMBER 31C707, TYPE NUMBER 0240-B1

KEY PART NO. NO.	DESCRIPTION	KEY PART NO. NO.	DESCRIPTION
445 698083	Filter-Air Cleaner Cartridge	876 495877	Kit-Pinion Spring
462 691261	Washer (Starter Cable)	877 393456	Wire-Connector/Alternator
474 696459	Alternator	896 691641	Pin-Drive Retainer
503 691532	Strap-Starter	914 690960	Screw (Rocker Cover)
505 691251	Nut (Governor Control Lever)	947 694393	Solenoid-Fuel
510 693699	Drive-Starter	950 691657	Screw (Float Bowl)
510A 497606	Drive-Starter	967 697015	Filter-Pre Cleaner
513 692024	Clutch-Drive	968 698403	Cover-Air Cleaner
523 697086	Dipstick	975 495933	Bowl-Float
524 691032	• Seal-Dipstick Tube	977 690192	Gasket Set-Carburetor
525 697184	Tube-Dipstick	987 691326 Ø	Seal-Throttle Shaft
544 692034	Starter-Armature	1005 697853	Fan-Flywheel
544A 390837	Starter-Armature	1019 697143	Kit-Label
552 697144	Bushing-Governor Crank	1022 272475 •+	Gasket-Rocker Cover
559 697561	Screw (Remote Choke Stop)	1023 692492	Cover-Rocker Arm
559A 693675	Screw (Remote Choke Stop)	1026 692003	Rod-Push (Intake)
562 691119	Bolt (Governor Control Lever)	692011	Rod-Push (Exhaust)
579 691029	Nut (Starter Cable)	1029 691751	Arm-Rocker
584 697112	Cover-Breather Passage	1034 690822	Guide-Push Rod
601 95162	Clamp-Hose	1036 695700	Label-Emission
614 691620	Pin-Cotter	1040 698368	Plate-Trim
616 692012	Crank-Governor	1044 691658	Screw (Flywheel)
617 692138 Ø	• Seal-O Ring (Intake Manifold)	1051 691265	Ring-Retaining
634 690801 Ø	Spring/Seal Assembly (Manual Choke)	1058 275038	Owner's Manual
634A 690802 Ø	Spring/Seal Assembly (Choke A Matic)	1059 698516	Kit-Screw/Washer
635 691909	Boot-Spark Plug	1070 690372	Screw (Flywheel Fan)
643 698401	Retainer-Air Filter	1083 691626	Nut (Starter Terminal)
654 690958	Nut (Carburetor)	1083A 690958	Nut (Starter Terminal)
691 692407	• Seal-Governor Shaft	1090 691293	Retainer-Brush
697 690372	Screw (Drive Cap)	1091 691333	Cap-Limiter
718 690959	Pin-Locating	1095 690190	Gasket Set-Valve
729 691224	Clip-Wire	1119 691183	Screw (Alternator)
741 697128	Gear-Timing	1263 697124	Reed-Breather
757 697607	Link-Counterweight	1264 697104	Screw (Breather Reed)
758 697134	Counterweight	1265 697125	Support-Blower Housing
759 697392	Pin-Counterweight	1266 691917 •Ø	Seal-O Ring (Intake Elbow)
783 693713	Gear-Pinion	1266A 697123 Ø	Seal-O Ring (Intake Elbow)
783A 693059	Gear-Pinion	1267 697575	Latch-Blower Housing
789 698329	Harness-Wiring	1270 697156	Plug-AVS Counterweight
797 693167	Nut (Brush Retainer)	1279 690960	Screw (Blower Housing Support)
801 691283	Cap-Drive	RPM Settings:	Low Speed: 1900-2100
801A 394856	Cap-Drive		High Speed: 3000-3200
802 691286	Cap-End		
802A 395537	Cap-End		
803 693757	Housing-Starter		
803A 398159	Housing-Starter		
830 691095	Stud (Rocker Arm)		
842 691031	• Seal-O Ring (Dipstick Tube)		
847 697611	Dipstick/Tube Assembly		
851 692424	Terminal-Spark Plug		
868 690968 •+	Seal-Valve		

- Included in Engine Gasket Set, Key. No. 358
- Ø Included in Carburetor Overhaul Kit, Key. No. 121
- ‡ Included in Carburetor Gasket Set, Key. No. 977
- + Included in Valve Gasket Set, Key. No. 1095

NOTE: All component dimensions given in U.S. inches 1 inch = 25.4 mm

LIMITED WARRANTY ON CRAFTSMAN TRACTOR AND BATTERY

2-YEAR ON TRACTOR

When used and maintained according to the operator's manual instructions, if this tractor fails due to a defect in material or workmanship within two years from the date of purchase, call 1-800-4-MY-HOME® to arrange for free repair.

During the first 30 days of purchase, there will be no charge to service the product in your home. For your convenience, in-home warranty service will still be available after the first 30 days of purchase, but a trip charge will apply. This charge will be waived if you transport the product to an authorized Craftsman drop-off location. For the nearest authorized location, call 1-800-4-MY-HOME®.

Tractor warranty coverage does not include:

- Expendable items which become worn during normal use, including but not limited to blades, spark plugs, air cleaners, belts, and oil filters.
- Standard maintenance servicing, oil changes, or tune-ups.
- Tire replacement or repair caused by punctures from outside objects, such as nails, thorns, stumps, or glass.
- Repairs necessary because of operator abuse, including but not limited to damage caused by towing objects beyond the capability of the tractor, impacting objects that bend the frame or crankshaft, or over-speeding the engine.
- Repairs necessary because of operator negligence, including but not limited to electrical and mechanical damage caused by improper storage, failure to use the proper grade and amount of engine oil, failure to keep the deck clear of flammable debris, or failure to maintain the equipment according to the instructions contained in the operator's manual.
- Engine (fuel system) cleaning or repairs necessary because of fuel determined to be contaminated or oxidized (stale). In general, fuel should be used within 30 days of its purchase date.
- Normal deterioration and wear of the exterior finishes, or product label replacement.
- The tractor battery, which is covered for only 90 days as stated below.

90-DAYS ON BATTERY

For ninety (90) days from the date of purchase, if the battery included with this tractor is defective in material or workmanship (our testing proves it will not hold a charge), it will be replaced free of charge.

During the first 30 days of purchase, there will be no charges to replace the battery in your home. For your convenience, in-home warranty service will still be available after the first 30 days of purchase, but a trip charge will apply. This charge will be waived if you transport the battery to an authorized Craftsman drop-off location. For the nearest authorized location, call 1-800-4-MY-HOME®.

All tractor and battery warranty coverage is void if this product is used for commercial or rental purposes.

This warranty applies only while this product is within the United States.

This warranty gives you specific legal rights, and you may also have other rights, which vary, from state to state.

Sears, Roebuck and Co., Dept. 817WA, Hoffman Estates, IL 60179

