

REPAIR PARTS MANUAL
MODEL NO. 257490
Lawn Tractor

CRAFTSMAN®

HOW TO USE THIS MANUAL

This manual is designed to provide the customer with a means to identify the parts on his/her tractor when ordering repair parts. The illustrations may or may not represent the actual assemblies; therefore, it is not recommended to use this manual as a guide to assemble or disassemble the tractor. Some hardware and parts are drawn larger in order to more readily identify them.

Each tractor has its own model number.

The model number for your tractor can be found on the fender under the seat.

When ordering parts, always give the following information:

- Product - "Tractor"
- Model Number - "257490"
- Part Number
- Part Description

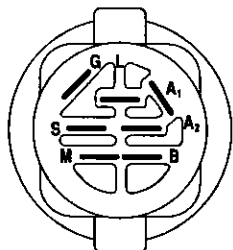
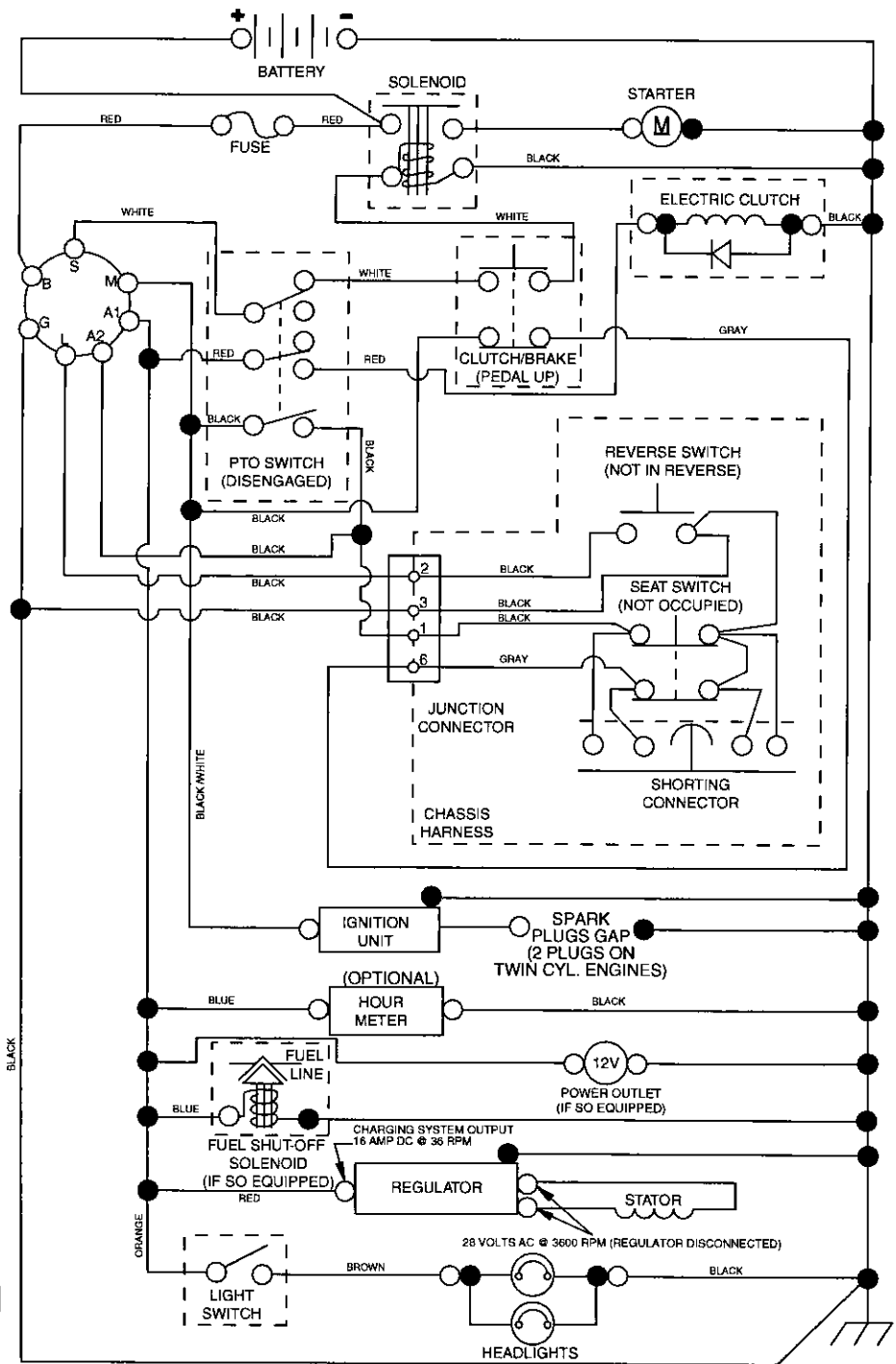
TABLE OF CONTENTS

SCHEMATIC	3
ELECTRICAL.....	4-5
CHASSIS	6-7
STEERING	8-9
DRIVE.....	10-11
ENGINE.....	12-13
SEAT	14
DECAL	15
MOWER DECK	16-17
LIFT.....	18
ENGINE BREAKDOWN.....	19-23
WARRANTY.....	BACK COVER

TRACTOR- -MODEL NO. 917. 257490

SCHEMATIC

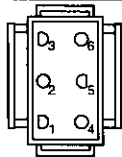
02929-194276_Regulated-Tex



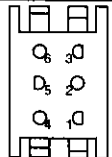
IGNITION SWITCH

POSITION	CIRCUIT "MAKE"
OFF	M+G+A1
RUN/OVERRIDE	B+A1
RUN	B+A1 L+A2
START	B + S + A1

02929

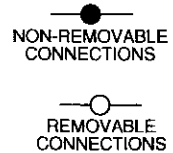


CHASSIS HARNESS CONNECTOR (MATING SIDE)



DASH HARNESS CONNECTOR (MATING SIDE)

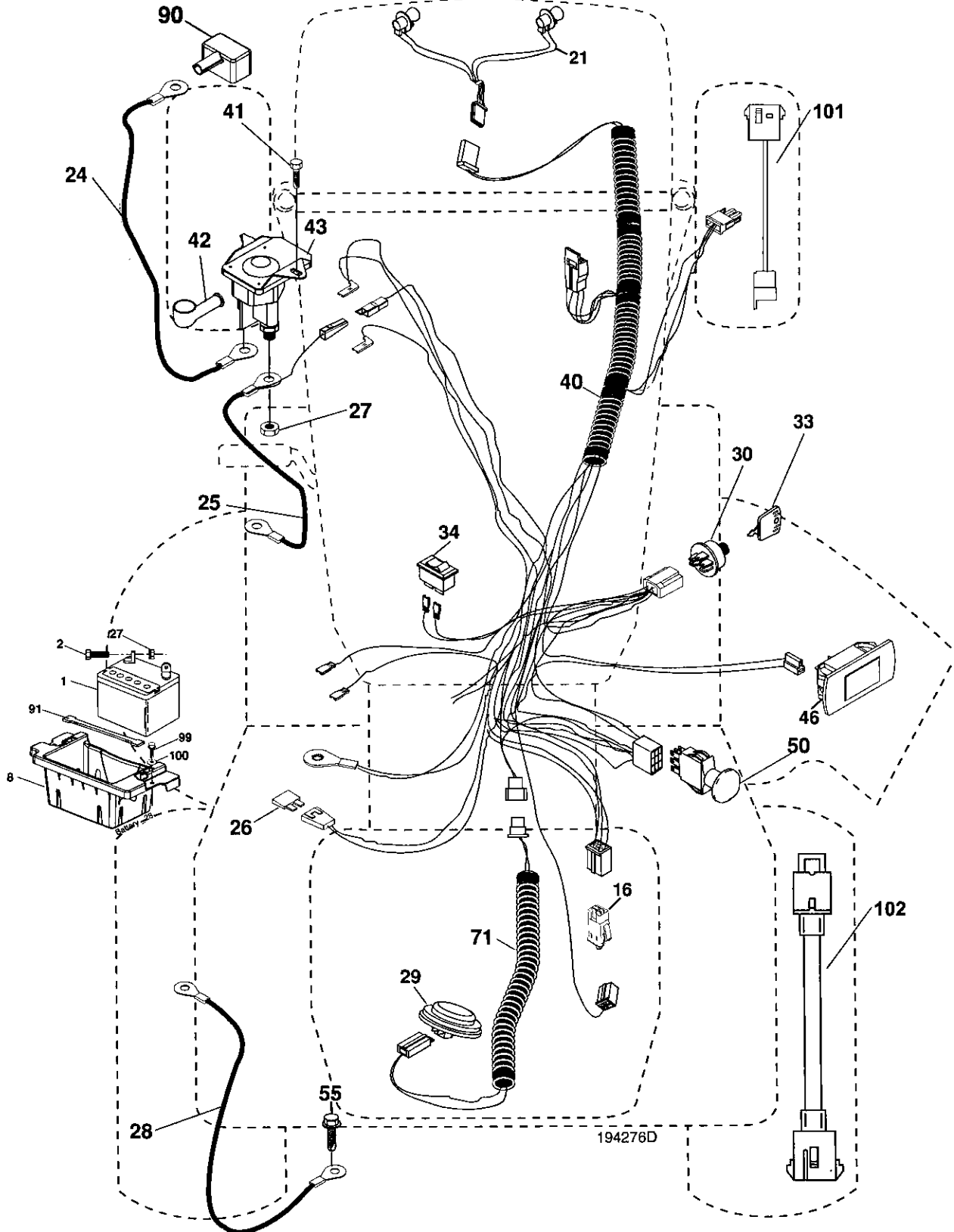
WIRING INSULATED CLIPS
NOTE: IF WIRING INSULATED CLIPS WERE REMOVED FOR SERVICING OF UNIT, THEY SHOULD BE REPLACED TO PROPERLY SECURE YOUR WIRING.



REPAIR PARTS

TRACTOR- -MODEL NO. 917. 257490

ELECTRICAL



REPAIR PARTS

TRACTOR- -MODEL NO. 917. 257490

ELECTRICAL

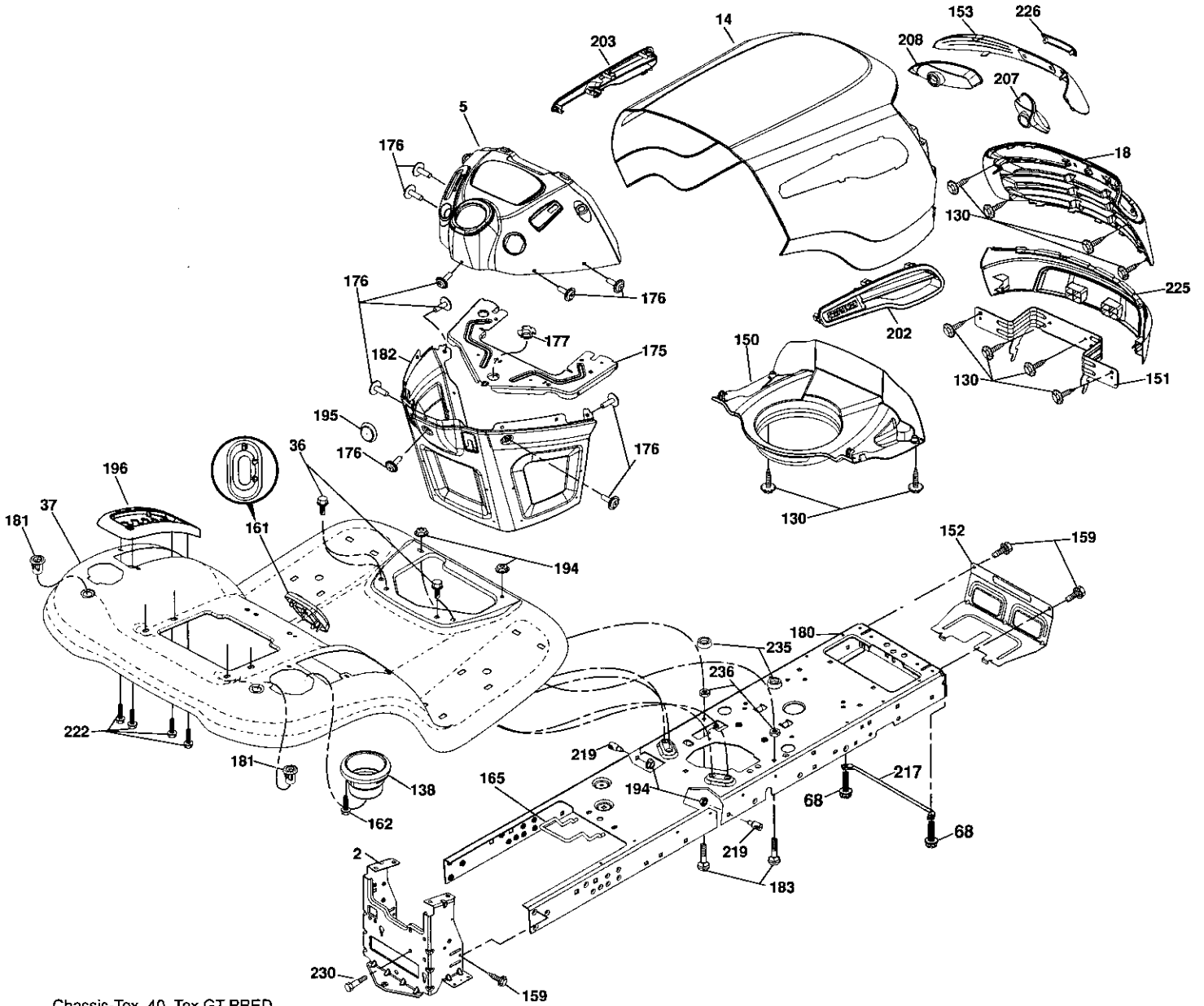
KEY PART NO.	NO.	DESCRIPTION
1	144927	Battery
2	74760412	Bolt Hex Hd 1/4-20 unc x 3/4
8	186491	Box Battery
16	176138	Switch Interlock Push-In
21	400252	Harness Socket Light W/4152J
24	400253	Battery Cable
25	198893	Cable Starter
26	175158	Fuse
27	73510400	Nut Keps Hex 1/4-20 unc
28	145491	Cable, Ground
29	401545	Switch, Seat
30	193350	Switch, Ign
33	140403	Key, Ignition
34	110712X	Switch Light / Reset
40	401104	Harness Ign. Dash
41	17720408	Screw Thd Cut 1/4-20 x 1/2
42	131563	Cover, Terminal
43	192507	Solenoid
46	401763	Gauge Hourmeter
50	174652	Switch PTO
55	17490512	Screw Thdrol 5/16-18 x 3/4 TYTT
71	194276	Harness Ign.
90	400724	Cover Battery Terminal
91	190270	Strap Battery Mount Front
99	17670412	Screw Hex WSH THDROL 1/4-20 x 3/4
100	19091416	Washer 9/32 x 7/8 x 16Ga.

NOTE: All component dimensions given in U.S. inches
1 inch = 25.4 mm

REPAIR PARTS

TRACTOR- -MODEL NO. 917. 257490

CHASSIS AND ENCLOSURES



Chassis-Tex_40_Tex GT PRED

REPAIR PARTS

TRACTOR- -MODEL NO. 917. 257490

CHASSIS AND ENCLOSURES

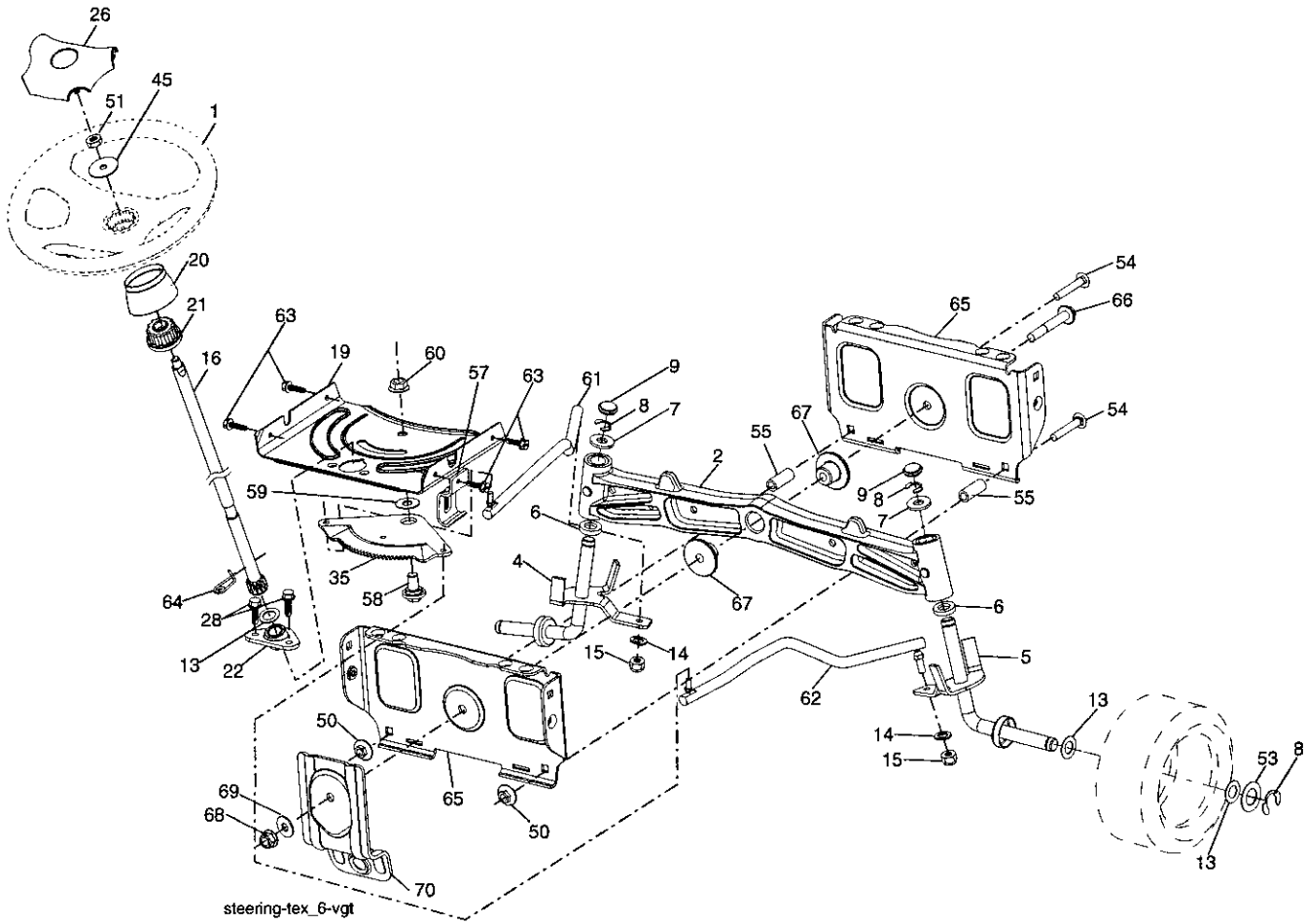
2	194263	Drawbar
5	199765X428	Dash
14	404654X428	Hood
18	404625	Grille
36	17060512	Screw 5/16
37	401120X428	Fender
68	17490508	Screw Thdrol 5/16-18 x 1/2
99	405903	Rod Bypass Asm.
130	191611	Screw 10 x 3/4 Single Lead-Hex
138	193224X428	Cupholder
150	199411	Duct Heat Hood
151	196332	Bracket Pivot
152	194329	Shield Browning/Debris
153	198965	Lens Bar
159	17000612	Screw Hexwsh Thdrol 3/8-16 x 3/4
161	193229X428	Window, Fuel
162	142432	Screw Hex Wsh Hi-Lo 1/4 x 1/2
165	194330	Support, Tank Rear
175	196304	Crossmember
176	400776	Screw 10-24 x 5/8 Wshd Qdrx
177	195227	Bushing Steering
180	194260	Chassis
181	193102X428	Bushing Mtg. Fender Crgo.
182	194787	Dash Lower
183	74780520	Bolt Fin Hex 5/16-18 x 1-1/4
194	73900500	Nut Lock Hex Flange 5/16-18
195	401556X428	Plug 12V Adapter Caplug
196	196378X428	Console Asm. Deck Lift
202	198968X428	Vent Side Hood RH
203	198969X428	Vent Side Hood LH
207	198963	Bezel RH
208	198964	Bezel LH
217	409167	Rod, Pivot
219	195161	Stud Fastener
222	137729	Screw Thd Roll 1/4-20 x 5/8
225	198962X428	Bumper
226	198967X428	Logo
230	196539	Bolt, Shoulder
235	406129	Spacer Fender
236	73930500	Nut Centerlock 5/16-18
--	403704	Plug Mount Cargo

NOTE: All component dimensions given in U.S. inches
1 inch = 25.4 mm

REPAIR PARTS

TRACTOR- -MODEL NO. 917. 257490

STEERING ASSEMBLY



REPAIR PARTS

TRACTOR- -MODEL NO. 917. 257490

STEERING ASSEMBLY

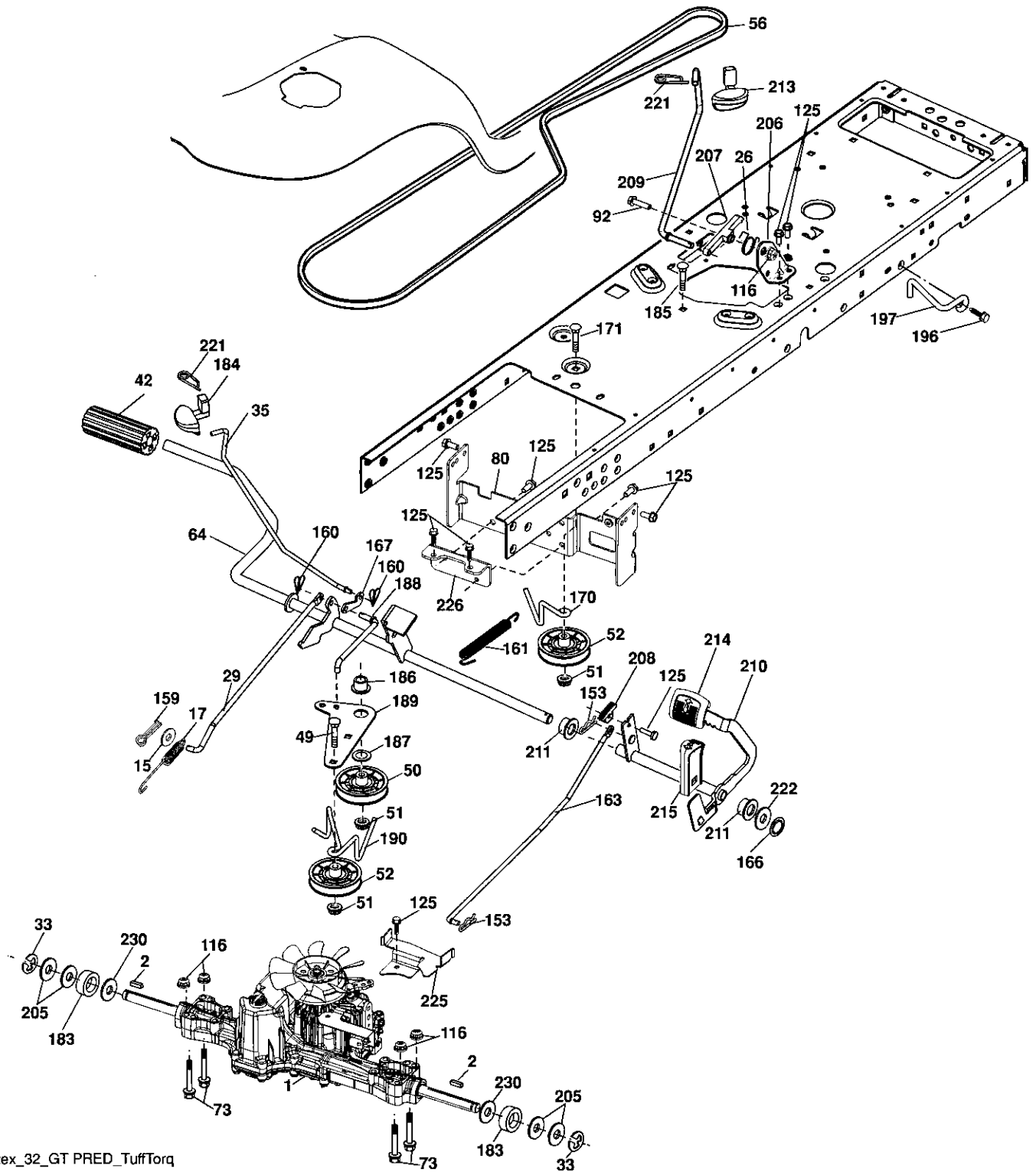
KEY NO.	PART NO.	DESCRIPTION
1	186093X428	Wheel, Steering
2	195968	Axle Asm., Front
4	403087	Spindle Asm., LH
5	403088	Spindle Asm., RH
6	6266H	Bearing, Race Thrust Harden
7	121748X	Washer 25/32 x 1-5/8 x 16 Ga.
8	12000029	Ring, Klip #T5304-75
9	184946X505	Cap, Spindle
13	121749X	Washer 25/32 x 1-1/4 x 16 Ga.
14	STD551137	Washer, Lock Hvy Hlcl Spr 3/8
15	73540600	Nut, Crown Lock 3/8-24 unf
16	194746	Shaft Steering
19	194729	Plate Steering
20	199676X428	Boot, Steering
21	186737	Adapter, Wheel Steering
22	194845	Bushing, Strg. Blk
26	186095X428	Insert, Wheel Steering
28	17000612	Screw 3/8-16 x 3/4
35	194732	Gear, Sector Plate
45	19183812	Washer 9/16 x 2-3/8 x 12 Ga.
50	73900600	Nut Lock Flg 3/8-16 unc
51	73940800	Nut Hex Jam Toplock 1/2-20 unf
53	188967	Washer Hardened .793 x 1.637 x .060
54	74760636	Bolt Hex HS 3/8-16 unc x 2-1/4
55	197636	Spacer Brace Axle
57	197246	Bracket Upstop
58	194747	Bolt Shoulder Sector Pivot CFM
59	194748	Washer Thrust Sector Steering
60	73971000	Nut Flange Lock 5/8-11
61	194740	Draglink LH
62	194741	Draglink, RH
63	17060512	Screw 5/16-18 x 3/4
64	199849	Retainer Clip Spring Steering
65	194734	Brace Axle Front
66	71020748	Bolt Hex Fghd 7/16-14 x 3 Serr
67	194737	Bushing PM Front Axle
68	73900700	Nut Lock Flange 7/16-14 Gr. 5
69	199162	Washer 1.5 x .505 x .118
70	196197	Bracket Deck Susp. Front

NOTE: All component dimensions given in U.S. inches
1 inch = 25.4 mm

REPAIR PARTS

TRACTOR- -MODEL NO. 917. 257490

DRIVE



drive-tex_32_GT PRED_TuffTorq

REPAIR PARTS

TRACTOR- -MODEL NO. 917. 257490

DRIVE

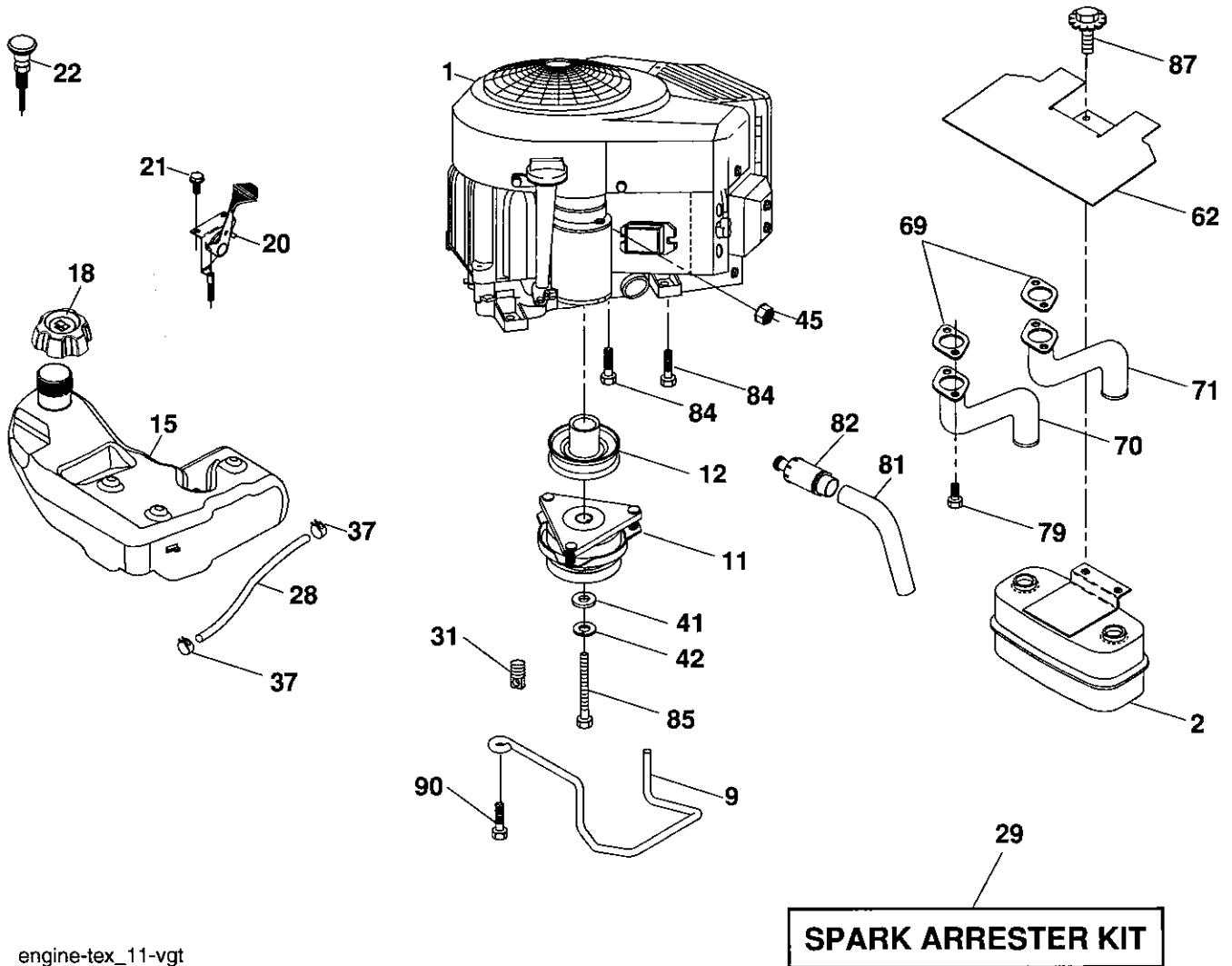
KEY NO.	PART NO.	DESCRIPTION	KEY NO.	PART NO.	DESCRIPTION
1	405384	Transaxle, Tufftorq K46 (Internal Parts Not Available)	170	194322	Keeper Belt Centerspan
2	123583X	Key Square	171	72110616	Bolt
15	19131316	Washer 13/32 x 13/16 x 16 Ga.	183	137057	Spacer Axle
17	401072	Spring, Brake	184	196439X505	Handle Parking Brake
26	199679	Spring, Return Cruise	185	72110620	Bolt
29	403806	Rod Brake	186	194321	Spacer Retainer
33	12000001	Ring E	187	19133210	Washer
35	199591	Rod, Brake, Park	188	194323	Link Clutch Ground Drive
42	8883R	Cover, Foot Pedal	189	194317	Bellcrank Ground Drive
49	72110614	Bolt	190	194318	Keeper Bellcrank Ground Drive
50	194327	Pulley Idler Flat	196	17000616	Screw 3/8-16 x 1
51	73900600	Lock Nut 3/8-16	197	195804	Link Clutch Anti-Rotation
52	194326	Idler V-Groove 910" Offset	205	121748X	Washer 25/32 x 1-5/8 x 16 Ga.
56	130969	V-Belt, Drive	206	197867	Bracket Mount Latch Cruise
64	197865	Shaft Asm. Pedal Brake Control	207	197868	Latch Control Cruise
73	74490544	Bolt Hex Flghd 5/16-18 Gr. 5	208	197869	Gear Sector Control Cruise
80	404483	Bracket Strp Trq.	209	199592	Rod, Control Cruise
92	74760520	Bolt Fin Hex 5/16-18UNC x 1.25	210	400980	Rocker Asm. Pedal Control
116	73900500	Nut Lock Hex Flange 5/16-18	211	120183X	Bearing, Nylon
125	17000512	Screw 5/16-18 x 3/4	213	196441X428	Knob Control Cruise
153	4497H	Retainer Spring	214	197302X428	Pedal Forward
159	76020412	Pin Cotter 1/8 x 3/4	215	197301X428	Pedal Reverse
160	169484	Retainer Clip	221	403187	Retainer Spring Clip Handle
161	195403	Spring, Return, Clutch	222	79212010	Washer 21/32 x 1-1/4
163	401034	Rod, Pedal Control	225	403319	Keeper Belt Trans.
166	197290	Nut Push .625	226	401564	Bracket Mount Torque
167	405257	Latch Brake Parking	230	188967	Washer

NOTE: All component dimensions given in U.S.
inches 1 inch = 25.4 mm

REPAIR PARTS

TRACTOR- -MODEL NO. 917. 257490

ENGINE



engine-tex_11-vgt

REPAIR PARTS

TRACTOR- -MODEL NO. 917. 257490

ENGINE

KEY PART NO.	NO.	DESCRIPTION	KEY PART NO.	NO.	DESCRIPTION
1	-----	Engine Briggs Model No. 445677-0758-E1 (See Engine Breakdown)	42	STD551143	Washer Lock 7/16
2	149723	Muffler	45	73510400	Nut Keps Hex 1/4-20 unc
9	194320	Keeper Belt Engine	62	146629	Shield Heat Muffler
11	179334	Clutch Ogura	69	165391	Gasket
12	405097	Pulley Engine	70	159955	Exhaust Tube LH
15	400021	Tank Fuel 3.00	71	160589	Exhaust Tube RH
18	195951	Cap Asm	81	148456	Tube Drain Oil Easy
20	175437X428	Control Throttle/Choke	82	181654	Plug Drain Oil
21	191611	Screw 10 x 3/4 Single Lead-Hex	84	17060620	Screw 3/8-16 x 1-1/4
22	187767X428	Control Choke	85	150280	Bolt Hex 7/16-20 x 4-1/4 5 Ga.
28	8543R	Fuel Line	79	183906	Screw Socket Head 5/16-18 x 1
29	137180	Spark Arrester Kit	87	171877	Bolt 5/16-18UNC x 3/4 w/sems
31	145006	Clip Push-in Hinged	90	17000616	Screw 3/8-16 x 1.0
37	123487X	Clamp Hose			
41	126197X	Washer 1-1/2 OD x 15/32 ID x .250			

NOTE: All component dimensions given in U.S. inches
1 inch = 25.4 mm

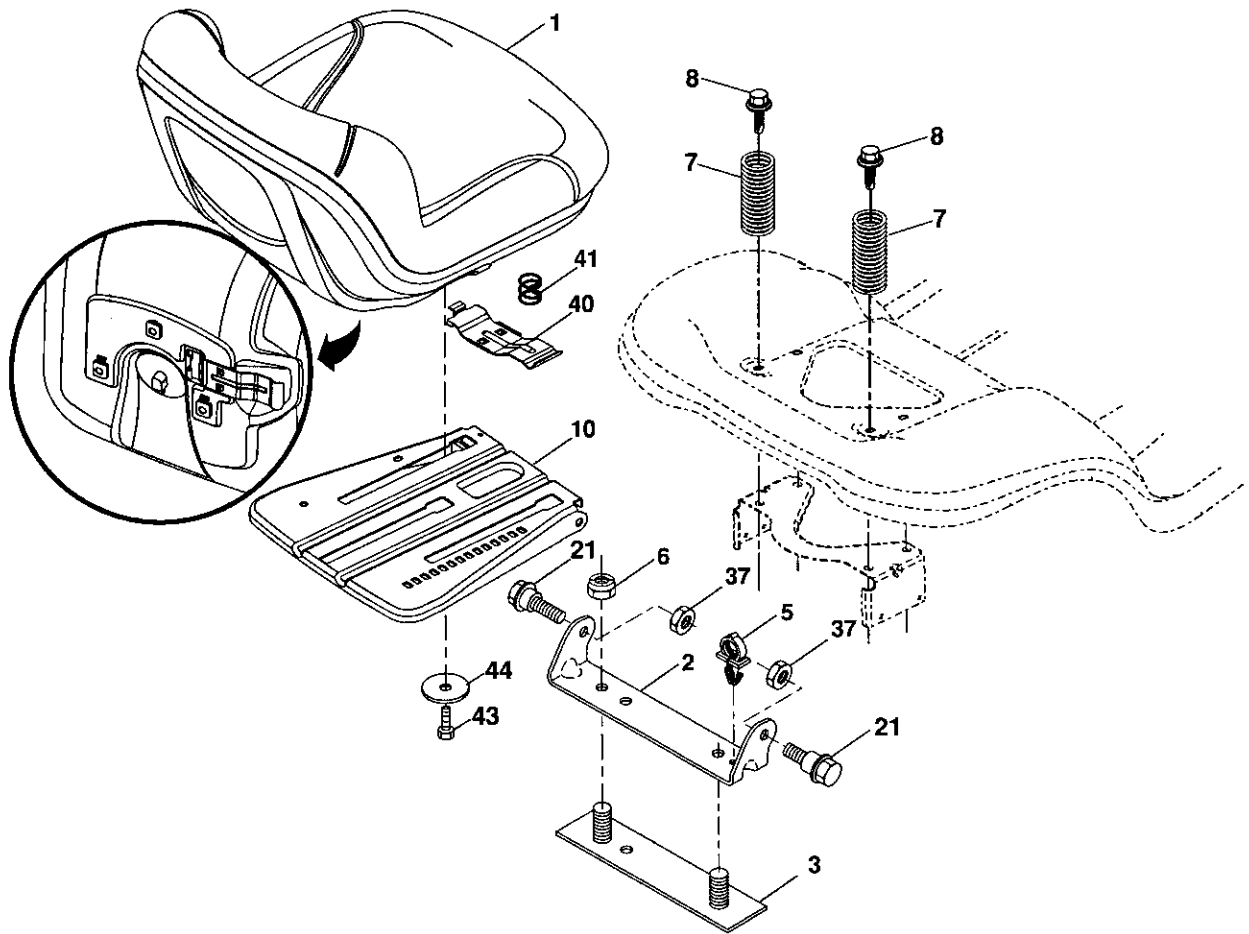
Engine Power Rating Information

The gross power rating for individual gas engine models is labeled in accordance with SAE (Society of Automotive Engineers) code J11940 (Small Engine Power & Torque Rating Procedure), and rating performance has been obtained and corrected in accordance with SAE J1995 (Revision 2002-5). Actual gross engine power will be lower and is affected by, among other things, ambient operating conditions and engine-to-engine variability. Given both the wide array of products on which engines are placed and the variety of environmental issues applicable to operating the equipment, the gas engine will not develop the rated gross power when used in a given piece of power equipment (actual "on-site" or net horsepower). This difference is due to a variety of factors including, but not limited to, accessories (air cleaner, exhaust, charging, cooling, carburetor, fuel pump, etc.), application limitations, ambient operating conditions (temperature, humidity, altitude), and engine-to-engine variability. Due to manufacturing and capacity limitations, Briggs & Stratton may substitute an engine of higher rated power for this Series engine.

REPAIR PARTS

TRACTOR- -MODEL NO. 917. 257490

SEAT



seat-tex_7-vgt

KEY PART NO. NO.

KEY PART NO.	NO.	DESCRIPTION
1	406622	Seat
2	180166	Bracket Pivot Fender
3	140675	Strap, Asm Fender
6	STD541437	Nut, Lock W/Ins. 3/8-16 unc
7	124181X	Spring, Seat Cprsn
8	171877	Bolt 5/16-18 uncx 3/4 w/Sems
10	196977	Pan, Seat

KEY PART NO. NO.

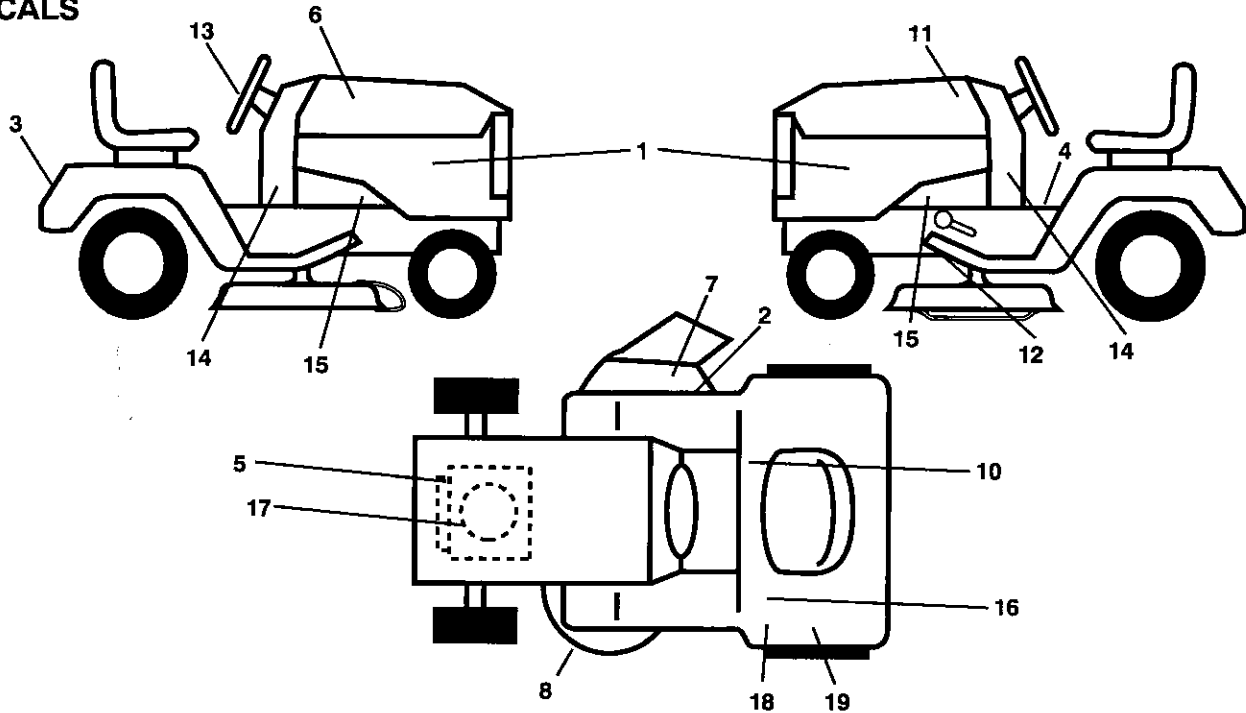
KEY PART NO.	NO.	DESCRIPTION
21	171852	Bolt, Shoulder 5/16-18
37	STD541431	Nut, Lock 5/16-18 unc
40	197661	Handle slide seat
41	198200	Spring latch Seat
43	74760612	Bolt 3/8-16 x 3/4
44	19133812	Washer 13/32 x 2-3/8 x 12 Ga.

NOTE: All component dimensions given in U.S. inches
1 inch = 25.4 mm

REPAIR PARTS

TRACTOR- -MODEL NO. 917. 257490

DECALS



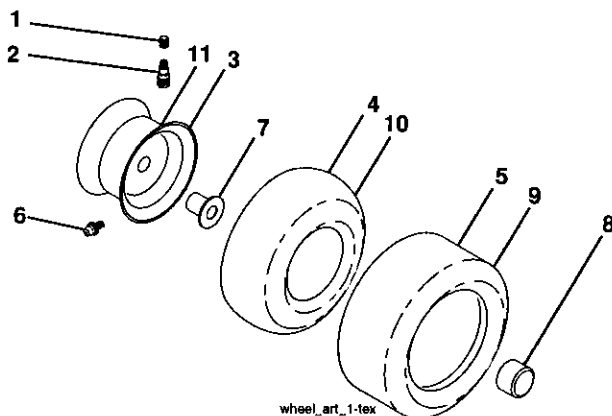
KEY PART NO. NO.

KEY PART NO.	NO.	DESCRIPTION
1	410336	Decal, Panel SD
2	182166	Decal, Cutfinger
3	411697	Decal, Fender/Hood
4	400389	Decal, Oper/Wrng.
5	409712	Decal, Engine HP
6	403695	Decal, Hood RH
7	196357	Decal, Deflect
8	198785	Decal, B-Belt Schematic
9	145005	Decal, Battery Dngc/Poi
10	159737	Decal, Brake/Clutch
11	403696	Decal, Hood LH
12	199135	Decal, Mower V-Belt Schematic
13	164065	Decal, Steering Wheel
14	403412	Decal, PNL SD

KEY PART NO. NO.

KEY PART NO.	NO.	DESCRIPTION
15	159736	Decal, Chassis Hot
16	180433	Decal, Fender DB
17	196841	Decal, Warning Eng.
18	178302	Decal, Oper Cruise
19	140837	Decal, Saddle
--	166960	Decal, Bypass
--	162598	Decal, Drawbar
--	193226X428	Pad, Footrest, LH
--	400981X428	Pad, Footrest, RH
--	413041	Manual, Operator's (Euro)
--	413042	Manual, Operator's (Scan)
--	413043	Manual, Operator's (E-Bloc)
--	413044	Manual, Operator's (Baltic)
--	413045	Manual, Parts

WHEELS & TIRES



KEY PART NO. NO.

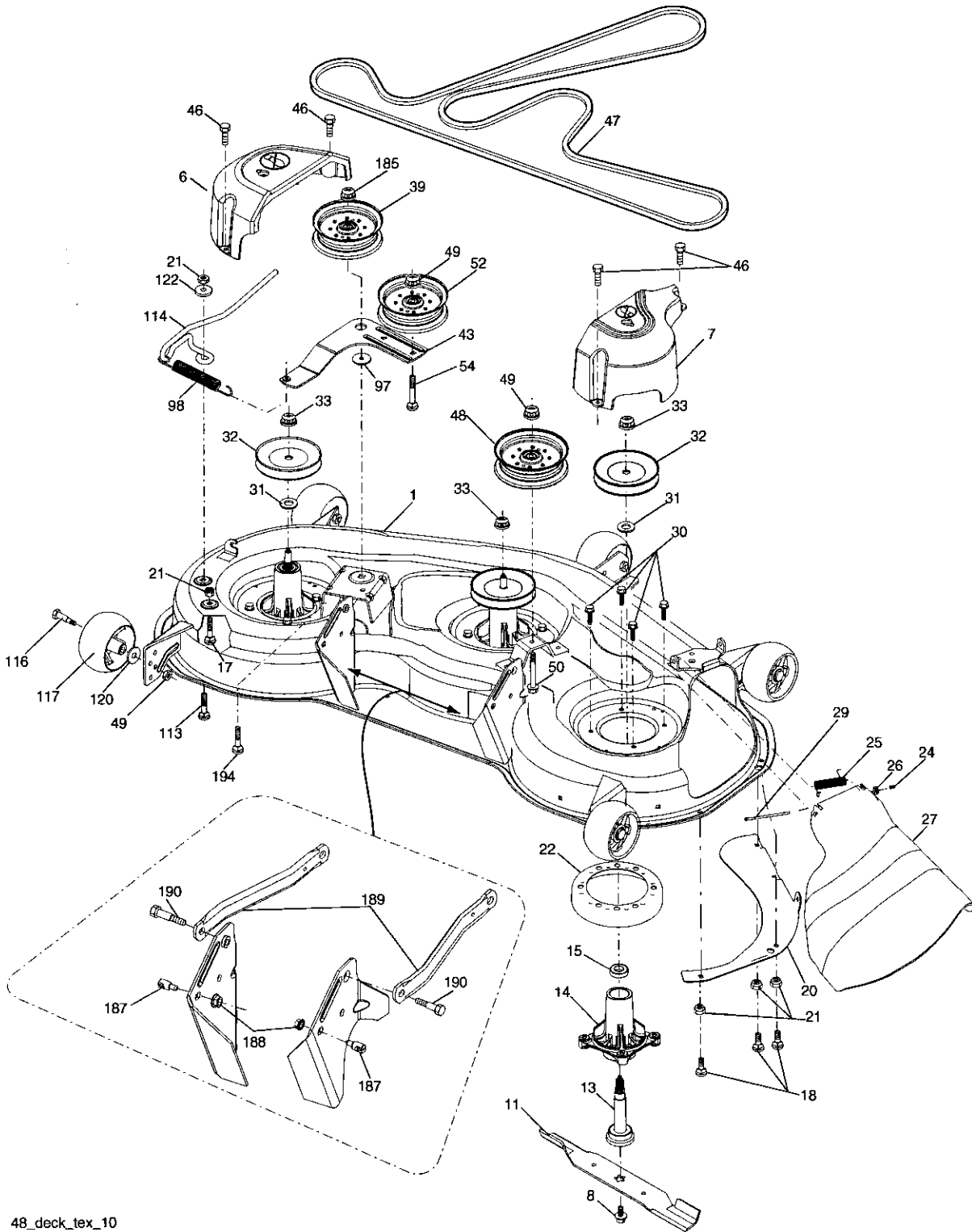
KEY PART NO.	NO.	DESCRIPTION
1	59192	Cap, Valve, Tire
2	65139	Stem, Valve
3	106732X645	Rim Assembly, Front
4	59904	Tube, Front
5	106222X	Tire, Front
6	278H	Fitting, Grease
7	9040H	Bearing, Flange
8	104757X645	Cap, Axle (Front Wheel Only)
9	122082X	Tire, Rear
10	7152J	Tube, Rear
11	106108X645	Rim Assembly, Rear
--	144334	Sealant, Tire (10 oz. Tube)

NOTE: All component dimensions given in U.S. inches
1 inch = 25.4 mm

REPAIR PARTS

TRACTOR- -MODEL NO. 917. 257490

MOWER



48_deck_tex_10

REPAIR PARTS

TRACTOR- -MODEL NO. 917. 257490

MOWER

KEY PART NO.	NO.	DESCRIPTION
1	197216	Deck Weldment Mower
6	197248	Cover Mandrel LH
7	199102	Cover Mandrel RH
8	174365	Bolt 7/16 Asm. Blade
11	180054	Blade High Lift
--	173921	Blade Mulching
12	404851	Rod Anit-Sway
13	187291	Shaft Asm. w/Lower Bearing
14	187281	Housing, Mandrel
15	110485X	Bearing, Ball, Mandrel
16	19131312	Washer 13/32 x 13/16 x 12 Ga.
18	72140505	Bolt RdHd 5/16-18 unc x 5/8
19	194208	Pin Cotter 5/16 Bow Tie Lock
20	174378	Baffle Vortex
21	73680500	Nut, Crownlock 5/16-18 unc
22	174493	Stripper Mandrel Deck
24	105304X	Cap Sleeve
25	178102	Spring, Torsion
26	110452X	Nut, Push
27	180655X428	Deflector Shield
29	131491	Rod, Hinge
30	173984	Screw, Thdroll Washer Head
31	187690	Washer, Spacer Mower Vented
32	173435	Pulley, Mandrel
33	400234	Nut, Flg. Top Lock
39	196104	Pulley, idler, Stationary
43	196065	Arm, Idler

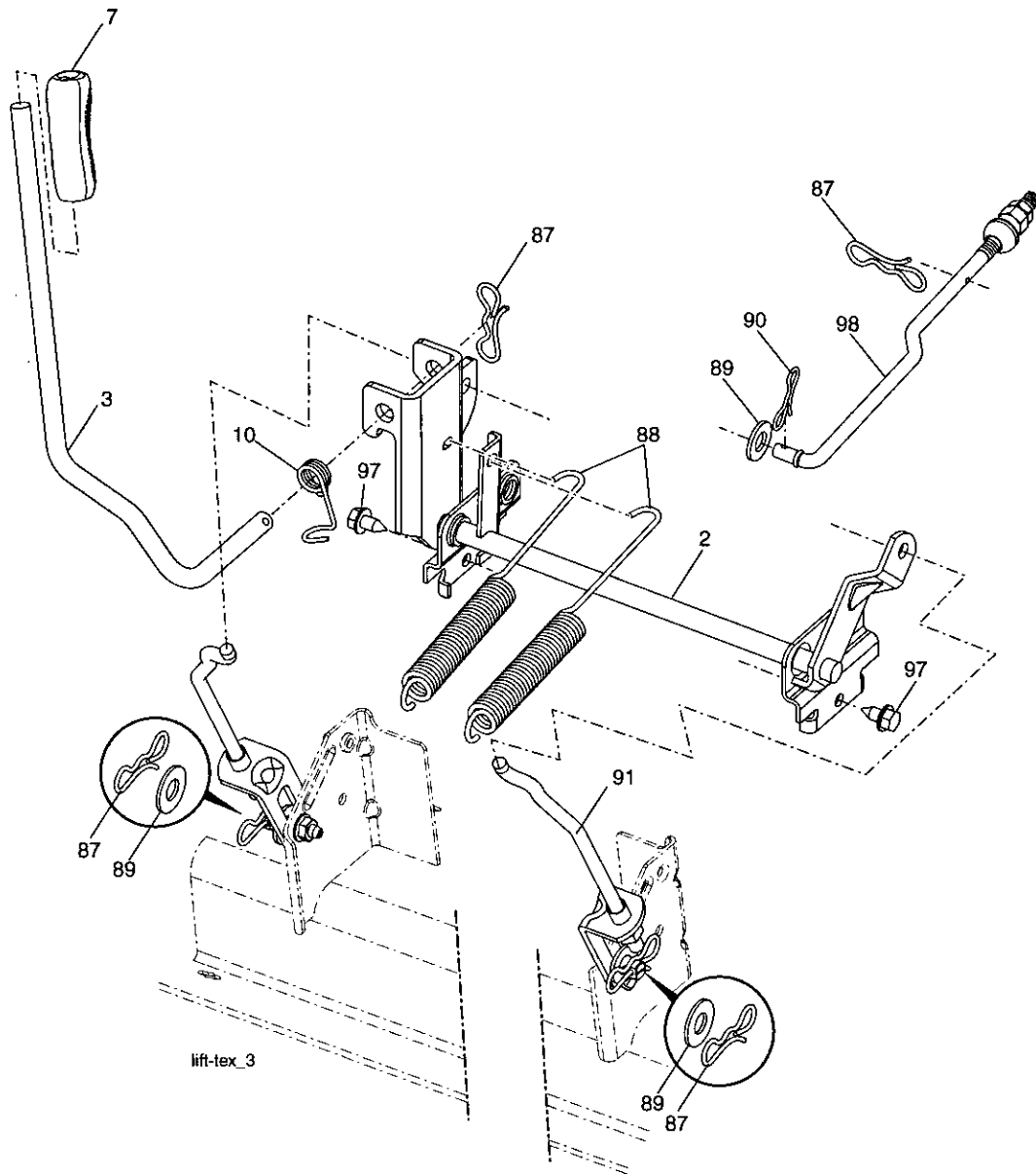
KEY PART NO.	NO.	DESCRIPTION
46	137729	Screw, Thdroll. 1/4-20 x 5/8
47	197242	Belt Drive Deck
48	177968	Pulley Idler Primary
50	17490636	Screw 3/8-16 x 2-1/4 unc
49	73900600	Nut, Lock Flg. 3/8-16 unc
52	196106	Pulley Idler
54	72110612	Bolt Carr. 3/8-16 x 1-1/2 Gr. 5
97	178515	Washer Hardened
98	196105	Spring Drive
113	72110508	Bolt Rdhd Sqnk 5/16-18 x 3/4
114	197451	Rod Tension Relief
116	193406	Bolt, Shoulder
117	174873	Gauge Wheel
120	19132012	Washer 13/32 x 1-1/4 x 12 Ga.
122	187557	Bushing Tension Relief
185	73900700	Nut Lock Flange 7/16-14 Gr. 5
187	195161	Stud Fastr. w/"D" Anti-Rotation
188	73900500	Nut Lock Hex Flange
189	195185	Arm Susp. Mower Rear
190	196539	Bolt Shoulder
194	72140716	Bolt Carr Sqnk 3/8-16 x 2-1/4
--	187292	Mandrel Asm. Service (Includes Key Nos. 13-15 and 33)
--	403329	Replacement Mower, Complete

NOTE: All component dimensions given in U.S. inches
1 inch = 25.4 mm

REPAIR PARTS

TRACTOR- -MODEL NO. 917. 257490

MOWER LIFT



KEY PART NO.	NO.	DESCRIPTION
2	195223	Shaft Asm., Lift
3	195231	Lever Asm., Lift Rh
7	196492X428	Grip, Lever
10	196314	Spring Torsion
87	194209	Pin Cotter 7/16 Bow Tie Lock
88	195303	Spring Lift Assist

KEY PART NO.	NO.	DESCRIPTION
89	19191912	Washer Clear Zinc
90	194208	Pin Cotter 5/16 Bow Tie Lock
91	195181	Link Lift Susp Mower Rear
97	17060612	Screw 3/8-16 x .75 Smgml Tap/R.Z
98	195264	Link Lift Susp. Front Mower

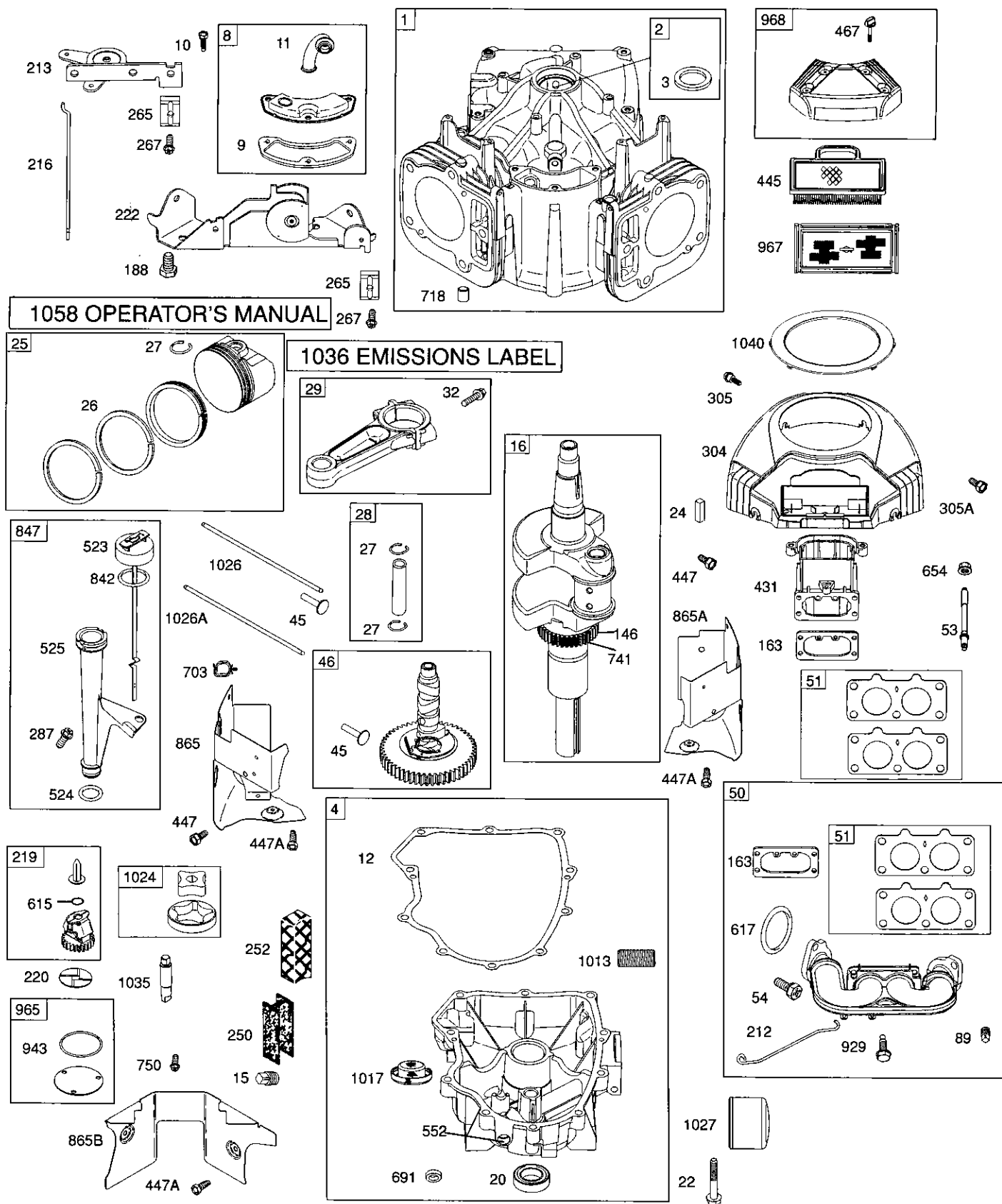
KEY PART NO.	NO.	DESCRIPTION
89	19191912	Washer Clear Zinc
90	194208	Pin Cotter 5/16 Bow Tie Lock
91	195181	Link Lift Susp Mower Rear
97	17060612	Screw 3/8-16 x .75 Smgml Tap/R.Z
98	195264	Link Lift Susp. Front Mower

NOTE: All component dimensions given in U.S. inches
1 inch = 25.4 mm

REPAIR PARTS

TRACTOR- -MODEL NO. 917. 257490

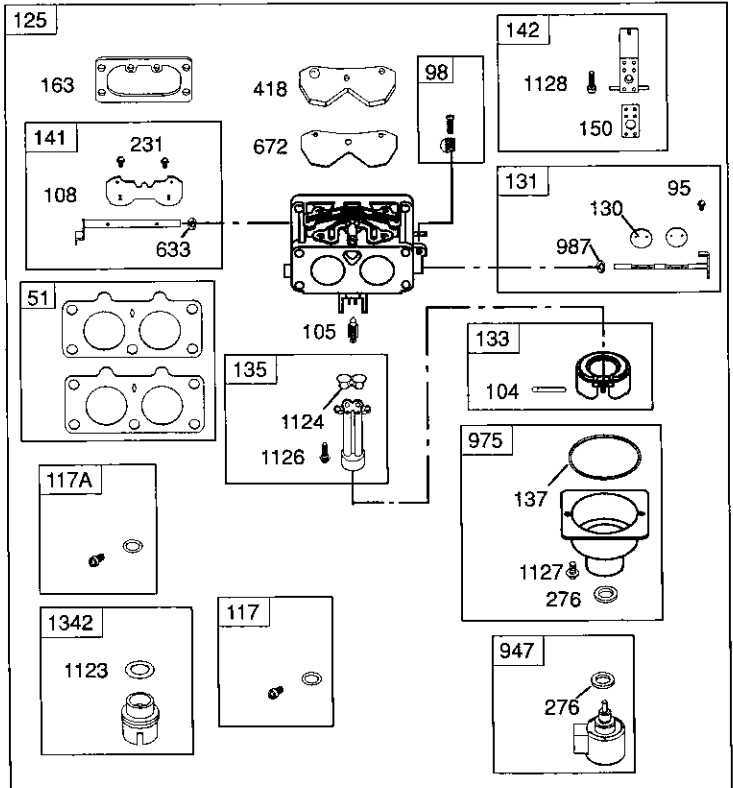
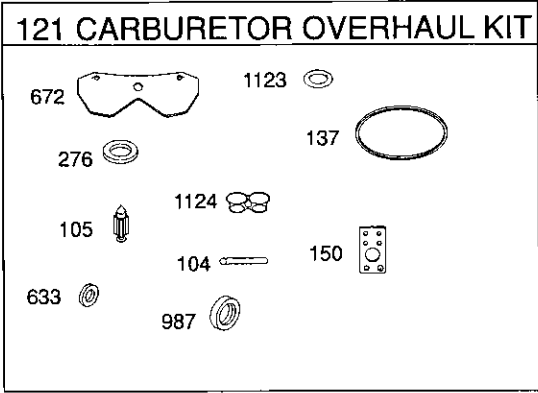
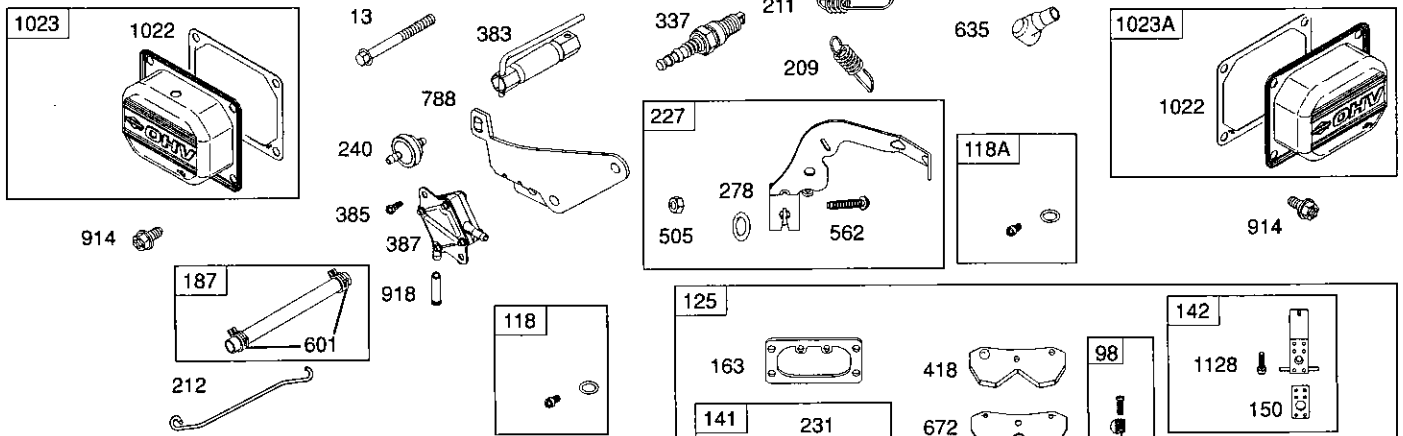
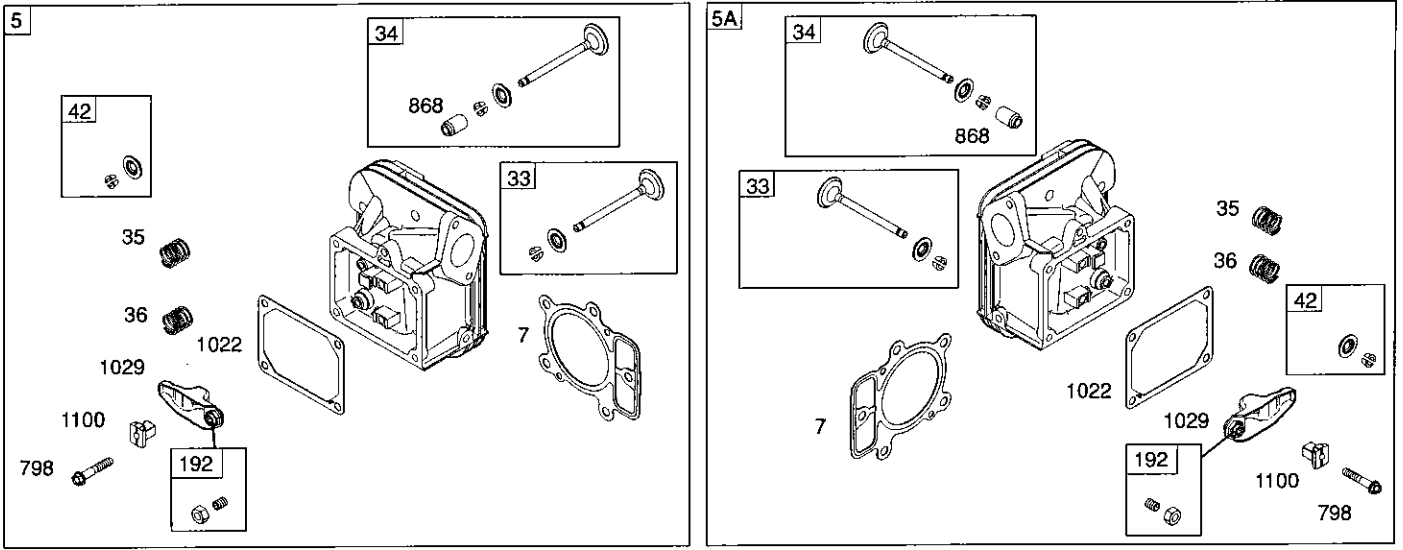
BRIGGS & STRATTON ENGINE - - MODEL NUMBER 445677, TYPE NUMBER 0758-E1



REPAIR PARTS

TRACTOR- -MODEL NO. 917. 257490

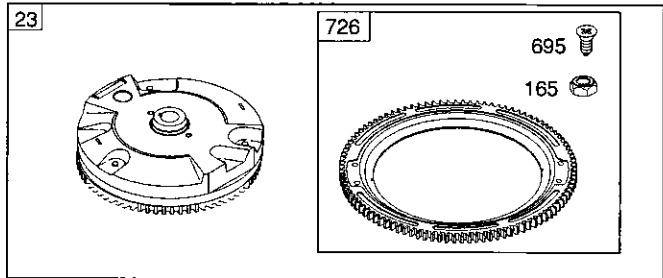
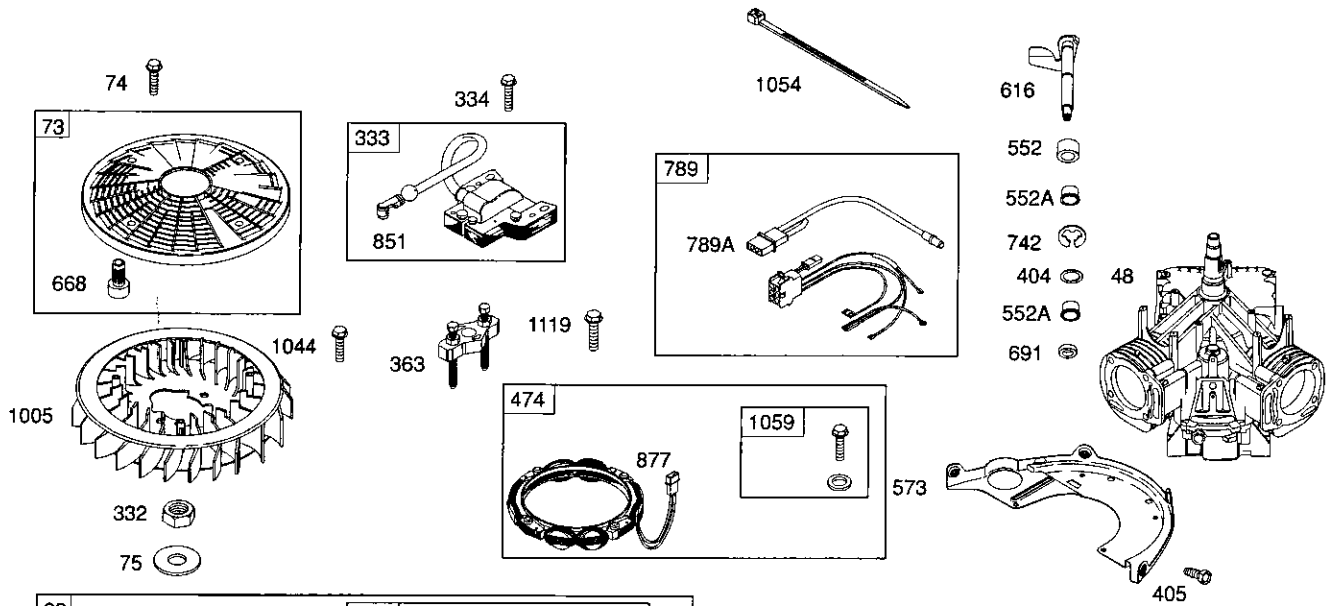
BRIGGS & STRATTON ENGINE - - MODEL NUMBER 445677, TYPE NUMBER 0758-E1



REPAIR PARTS

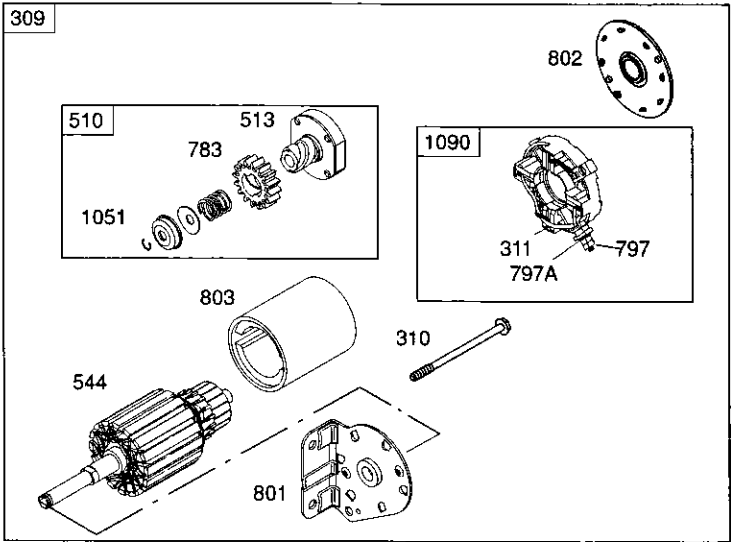
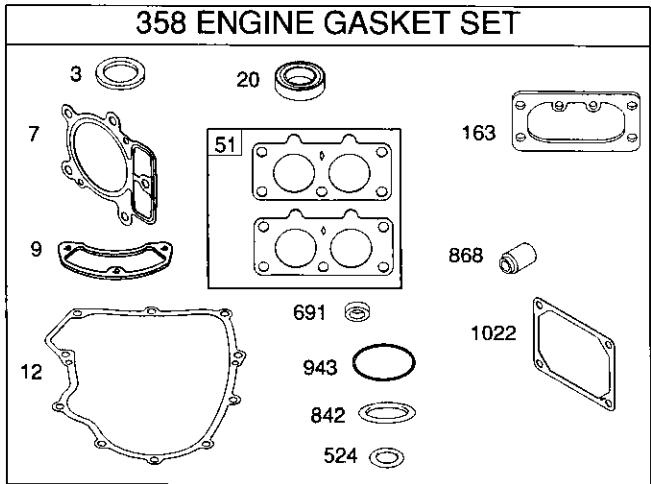
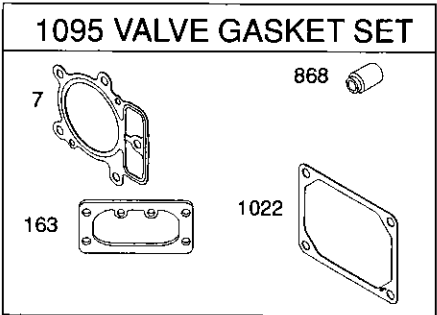
TRACTOR- -MODEL NO. 917. 257490

BRIGGS & STRATTON ENGINE - - MODEL NUMBER 445677, TYPE NUMBER 0758-E1



1329 REPLACEMENT ENGINE

1330 REPAIR MANUAL



697

REPAIR PARTS

TRACTOR- -MODEL NO. 917. 257490

BRIGGS & STRATTON ENGINE - - MODEL NUMBER 445677, TYPE NUMBER 0758-E1

KEY NO.	PART NO.	DESCRIPTION	KEY NO.	PART NO.	DESCRIPTION
1	699753	Cylinder Assembly	213	691021	Bracket-Choke Control
2	499585	Kit-Bushing/Seal (Magneto Side)	216	691022	Link-Choke
3	391086s	• Seal-Oil (Magneto Side)	219	793338	Gear-Governor
4	699747	Sump-Engine	220	690412	Washer (Governor Gear)
5	792299	Head-Cylinder (Cylinder 1)	222	698757	Bracket-Control
5A	792300	Head-Cylinder (Cylinder 2)	227	792492	Lever-Governor Control
7	693997	+ Gasket-Cylinder Head	231	690718	Screw (Choke Valve)
8	792185	Breather Assembly	240	691035	Filter-Fuel
9	690937	• Gasket-Breather	250	690957	Retainer-Breather
10	691108	Screw (Breather Assembly)	252	690956	Collector-Oil
11	792184	Tube-Breather	265	691024	Clamp-Casing
12	697227	• Gasket-Crankcase	267	695134	Screw (Casing Clamp)
13	791130	Screw (Cylinder Head)	276	695410	•Ø Washer-Sealing
15	690946	Plug-Oil Drain	278	792651	Washer-Sealing (Governor Control Lever)
16	699700	Crankshaft			
20	791892	• Seal-Oil (PTO Side)	287	691108	Screw (Dipstick/Tube Assembly)
22	694966	Screw (Crankcase Cover)	304	791243	Housing-Blower
23	691053	Flywheel	305	691005	Screw (Blower Housing)
24	222698s	Key-Flywheel	305A	790690	Screw (Blower Housing)
25	792117	Piston Assembly (Standard)	309	499521	Motor-Starter
	792144	Piston Assembly (.020" Oversize)	310	691263	Screw (Starter Motor)
26	792026	Ring Set (Standard)	311	497608	Brush Set
	792073	Ring Set (.020" Oversize)	332	691059	Nut (Flywheel)
27	690975	Lock-Piston Pin	333	691060	Armature-Magneto
28	690229	Pin-Piston (Standard)	334	691061	Screw (Magneto Armature)
29	699699	Rod-Connecting (Standard)	337	691043	Plug-Spark
32	690976	Screw (Connecting Rod)	358	694012	Gasket Set-Engine
33	499596	Valve-Exhaust	363	19203	Puller-Flywheel
34	792200	Valve-Intake	383	89838s	Wrench-Spark Plug
35	694865	Spring-Valve (Intake)	385	691108	Screw (Fuel Pump)
36	694865	Spring-Valve (Exhaust)	387	808656	Pump-Fuel
42	499586	Keeper-Valve	404	690442	Washer (Governor Crank)
45	690977	Tappet-Valve	405	697820	Screw (Back Plate)
46	790562	Camshaft	418	690999	Plate-Carburetor
48	698173	Short Block	431	790816	Elbow-Intake
50	695241	Manifold-Intake	445	499486s	Filter-Air Cleaner Cartridge
51	791677	• Gasket-Intake	447	691003	Screw (Air Guide Cover)
53	690951	Stud (Carburetor)	447A	691108	Screw (Air Guide Cover)
54	699816	Screw (Intake Manifold)	467	691008	Knob-Air Cleaner
73	494439	Screen-Rotating	474	696458	Alternator
74	698425	Screw (Rotating Screen)	501	691185	Regulator
75	691056	Washer (Flywheel)	505	691029	Nut (Governor Control Lever)
89	690283	Plug-Oil	510	696541	Drive-Starter
95	690718	Screw (Throttle Valve)	513	692024	Clutch-Drive
98	699721	Kit-Idle Speed	523	691036	Dipstick
104	694918	Ø Pin-Float Hinge	524	691032	• Seal-O Ring (Dipstick Tube)
105	698537	Ø Valve-Float Needle	525	691037	Tube-Dipstick
108	699723	Valve-Choke	526	691108	Screw (Regulator)
117	791501	Jet-Main (Standard)(Left)	544		Armature-Starter (Serviced by 499521)
117A	791502	Jet-Main (Standard)(Right)			Starter Motor Only)
118	695415	Jet-Main (High Altitude)(Left)	552	690552	Bushing-Governor Crank
118A	843099	Jet-Main (High Altitude)(Right)	552A	690553	Bushing-Governor Crank
121	792455	Kit-Carburetor Overhaul	562	690311	Bolt (Governor Control Lever)
125	791230	Carburetor	573	790444	Plate-Back
130	690993	Valve-Throttle	601	691038	Clamp-Hose
131	499805	Kit-Throttle Shaft	615	698290	Retainer-Governor Shaft
133	699724	Float-Carburetor	616	691045	Crank-Governor
135	699729	Tube-Fuel Transfer	617	697891	Seal-O Ring (Intake Manifold)
137	690994	Ø Gasket-Float Bowl	633	690998	Ø Seal-Choke/Throttle Shaft
141	699722	Kit-Choke Shaft	635	66538s	Boot-Spark Plug
142	699726	Nozzle-Carburetor	654	690958	Nut (Carburetor)
146	690979	Key-Timing	668	691215	Spacer
150	690995	Ø Gasket-Nozzle	672	690234	Ø Gasket-Carburetor Plate
163	691001	+ Gasket-Air Cleaner	691	790574	• Seal-Governor Shaft
165	693148	Nut (Ring Gear)	695	693149	Screw (Ring Gear)
187	791766	Line-Fuel (Cut to Required Length)	697	690372	Screw (Drive Cap)
188	691108	Screw (Control Bracket)	703	691010	Clip
192	690083	Adjuster-Rocker Arm	718	690959	Pin-Locating
209	793340	Spring-Governor	726	499612	Gear-Ring
211	691019	Spring-Governed Idle	741	690980	Gear-Timing
212	695238	Link-Governor	742	690328	Retainer-E Ring

REPAIR PARTS

TRACTOR- -MODEL NO. 917. 257490

BRIGGS & STRATTON ENGINE - - MODEL NUMBER 445677, TYPE NUMBER 0758-E1

KEY PART NO.	PART NO.	DESCRIPTION
750	696999	Screw (Oil Pump Cover)
783	695708	Gear-Pinion
788	793145	Bracket-Fuel Pump
789	698330	Harness-Wiring
789A	790544	Harness-Wiring
797	691029	Nut (Brush Retainer)
797A	693167	Nut (Brush Retainer)
798	697890	Screw (Rocker Arm)
801	691283	Cap-Drive
802	691286	Cap-End
803		Housing-Starter (Serviced by 499521 Starter Motor Only)
842	691031	• Seal-O Ring (Dipstick)
847	499602	Assembly-Dipstick/Tube
851	493880s	Terminal-Spark Plug
865	691012	Cover-Air Guide (Cylinder 1)
865A	793205	Cover-Air Guide (Cylinder 2)
865B	691015	Cover-Air Guide
868	690968	*+ Seal-Valve
877	399916	Wire/Connector-Alternator
914	691127	Screw (Rocker Arm Cover)
918	793147	Hose-Vacuum
929	695239	Screw (Choke Control Bracket)
943	690589	• Seal-O Ring (Oil Pump Cover)
947	841546	Solenoid-Fuel
965	499613	Cover-Oil Pump
967	273638s	Filter-Pre Cleaner
968	791242	Cover-Air Cleaner
975	791232	Bowl-Float
987	691000	Ø Seal-Throttle Shaft
1005	791236	Fan-Flywheel
1013	690954	Nipple-Oil Filter
1017	690770	Screen-Oil Pump
1022	690971	*+ Gasket-Rocker Cover
1023	793146	Cover-Rocker Arm (Cylinder 1)
1023A	499600	Cover-Rocker Arm (Cylinder 2)
1024	499054	Pump-Oil
1026	690981	Rod-Push (Steel)
1026A	690982	Rod-Push (Aluminum)
1027	492932s	Filter-Oil
1029	690972	Arm-Rocker
1035	691042	Shaft-Pump
1036		Label-Emissions (Available from an authorized Briggs & Stratton Service Dealer)
1040	791237	Plate-Trim
1051	691265	Ring-Retaining
1054	280275	Cable-Tie
1058	MS3372	Operator's Manual
1059	698516	Kit-Screw/Washer
1070	690372	Screw (Flywheel Fan)
1090	691293	Retainer-Brush
1095	694013	Set-Valve Gasket
1100	690973	Pivot-Rocker Arm
1119	691183	Screw (Alternator)
1123	841653	Ø Seal-O Ring (Solenoid Retainer)
1124	690988	Ø Seal-O Ring (Fuel Transfer Tube)
1126	690991	Screw (Fuel Transfer Tube)
1127	695407	Screw (Float Bowl)
1128	690990	Screw (Carburetor Nozzle)
1329	446877-0027	Replacement Engine (Transfer the speed limiter control assembly to the replacement engine. Transfer Governor Spring to the replacement engine.)
1330	273521	Repair Manual
1342	699731	Extension Fuel Transfer Tube

*Included in Engine Gasket Set, Key. No. 358

ØIncluded in Carburetor Overhaul Kit, Key. No. 121

+Included in Valve Overhaul Kit, Key. No. 1095

NOTE: All component dimensions given in U.S. inches 1 inch = 25.4 mm

LIMITED WARRANTY ON CRAFTSMAN TRACTOR AND BATTERY

2-YEAR ON TRACTOR

When used and maintained according to the operator's manual instructions, if this tractor fails due to a defect in material or workmanship within two years from the date of purchase, call 1-800-4-MY-HOME® to arrange for free repair.

During the first 30 days of purchase, there will be no charge to service the product in your home. For your convenience, in-home warranty service will still be available after the first 30 days of purchase, but a trip charge will apply. This charge will be waived if you transport the product to an authorized Craftsman drop-off location. For the nearest authorized location, call 1-800-4-MY-HOME®.

Tractor warranty coverage does not include:

- Expendable items which become worn during normal use, including but not limited to blades, spark plugs, air cleaners, belts, and oil filters.
- Standard maintenance servicing, oil changes, or tune-ups.
- Tire replacement or repair caused by punctures from outside objects, such as nails, thorns, stumps, or glass.
- Repairs necessary because of operator abuse, including but not limited to damage caused by towing objects beyond the capability of the tractor, impacting objects that bend the frame or crankshaft, or over-speeding the engine.
- Repairs necessary because of operator negligence, including but not limited to electrical and mechanical damage caused by improper storage, failure to use the proper grade and amount of engine oil, failure to keep the deck clear of flammable debris, or failure to maintain the equipment according to the instructions contained in the operator's manual.
- Engine (fuel system) cleaning or repairs necessary because of fuel determined to be contaminated or oxidized (stale). In general, fuel should be used within 30 days of its purchase date.
- Normal deterioration and wear of the exterior finishes, or product label replacement.
- The tractor battery, which is covered for only 90 days as stated below.

90-DAYS ON BATTERY

For ninety (90) days from the date of purchase, if the battery included with this tractor is defective in material or workmanship (our testing proves it will not hold a charge), it will be replaced free of charge.

During the first 30 days of purchase, there will be no charges to replace the battery in your home. For your convenience, in-home warranty service will still be available after the first 30 days of purchase, but a trip charge will apply. This charge will be waived if you transport the battery to an authorized Craftsman drop-off location. For the nearest authorized location, call 1-800-4-MY-HOME®.

All tractor and battery warranty coverage is void if this product is used for commercial or rental purposes.

This warranty applies only while this product is within the United States.

This warranty gives you specific legal rights, and you may also have other rights, which vary, from state to state.

Sears, Roebuck and Co., Dept. 817WA, Hoffman Estates, IL 60179

