

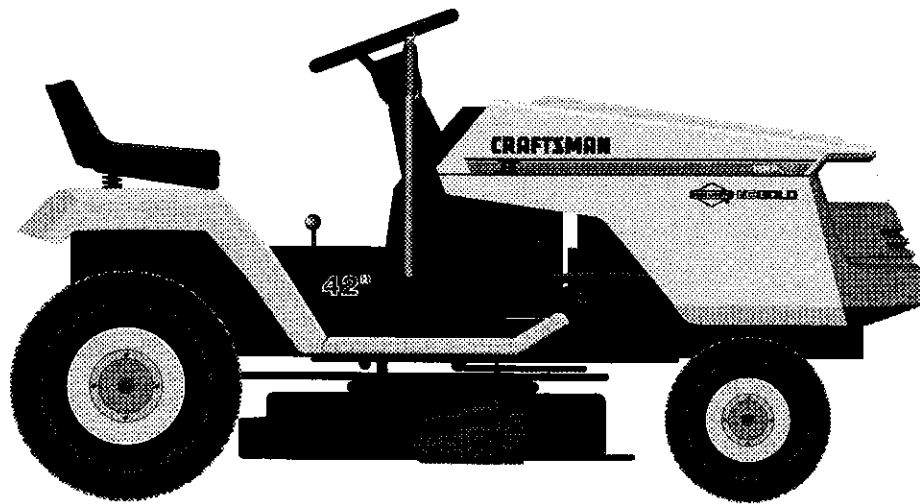
SEARS

CRAFTSMAN®

MODEL NUMBER 917.257572 OWNER'S MANUAL

- **Assembly**
- **Operation**
- **Customer Responsibilities**
- **Service and Adjustments**
- **Repair Parts**

15/42-2



CAUTION: Read and follow all safety rules and instructions before operating this equipment.

Sears, Roebuck and Co., Hoffman Estates, IL 60179 U.S.A.

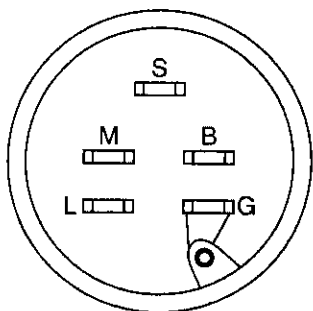
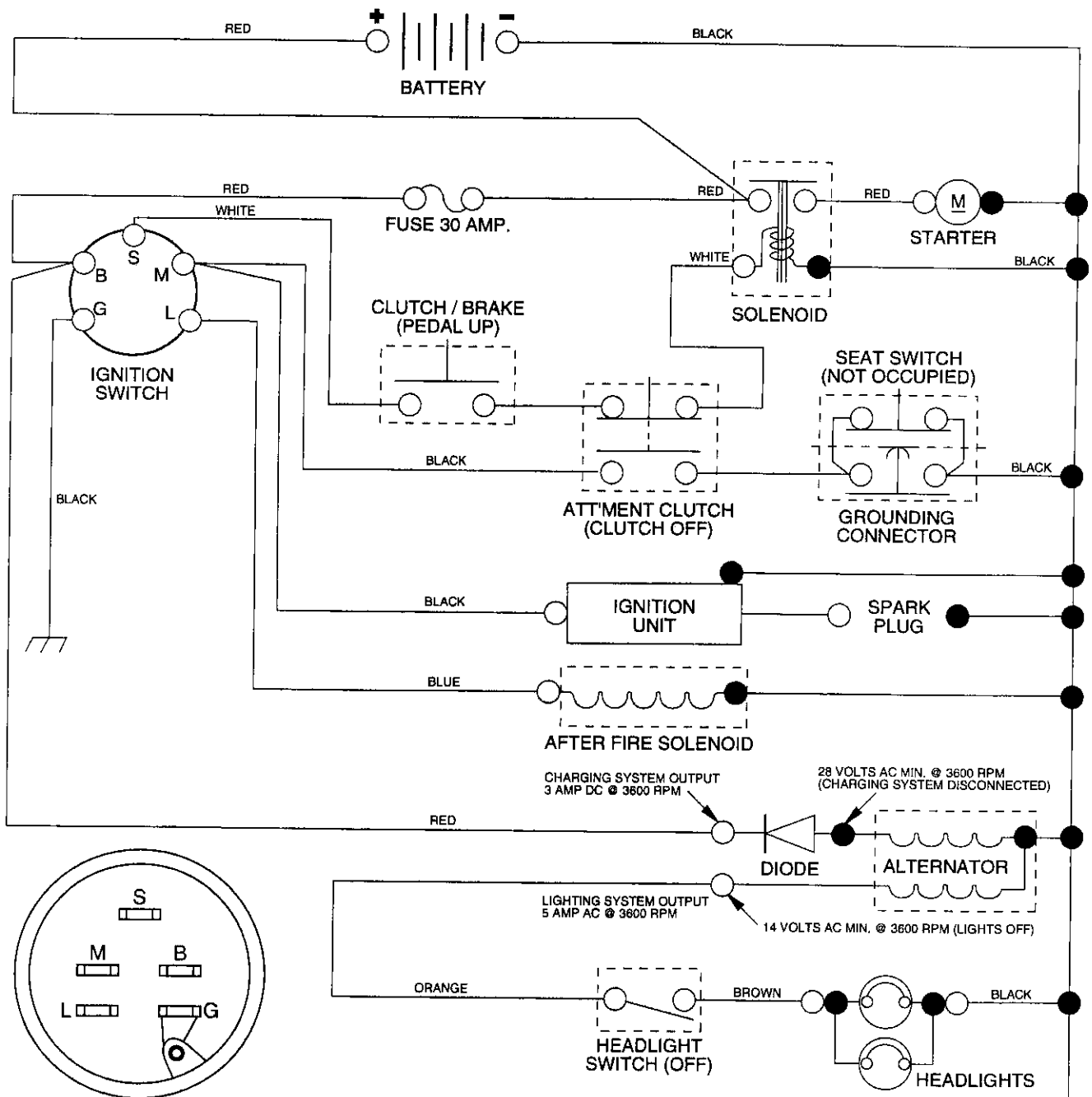
l
l
ll
ly
s,
are
ine
not
ere
tight
oper
d-up.
efore
bject.
ning.
e, and
allow
is and
n nec-
e(s) or
nem.
vice as

por-
ans
OUR

spark
innot
event
g up,
aking

15 HP 42" TRACTOR - - MODEL NUMBER 917.257572

SCHEMATIC



IGNITION SWITCH

POSITION	CIRCUIT
OFF	M + G
ON	B + L
START	B + S + L

WIRING INSULATED CLIPS

NOTE: IF WIRING INSULATED CLIPS WERE REMOVED FOR SERVICING OF UNIT, THEY SHOULD BE REPLACED TO PROPERLY SECURE YOUR WIRING

NOTE

YOUR TRACTOR IS EQUIPPED WITH A SPECIAL ALTERNATOR SYSTEM. THE LIGHTS ARE NOT CONNECTED TO THE BATTERY, BUT HAVE THEIR OWN ELECTRICAL SOURCE. BECAUSE OF THIS, THE BRIGHTNESS OF THE LIGHTS WILL CHANGE WITH ENGINE SPEED. AT IDLE THE LIGHTS WILL DIM. AS THE ENGINE IS SPEEDED UP, THE LIGHTS WILL BECOME THEIR BRIGHTEST.

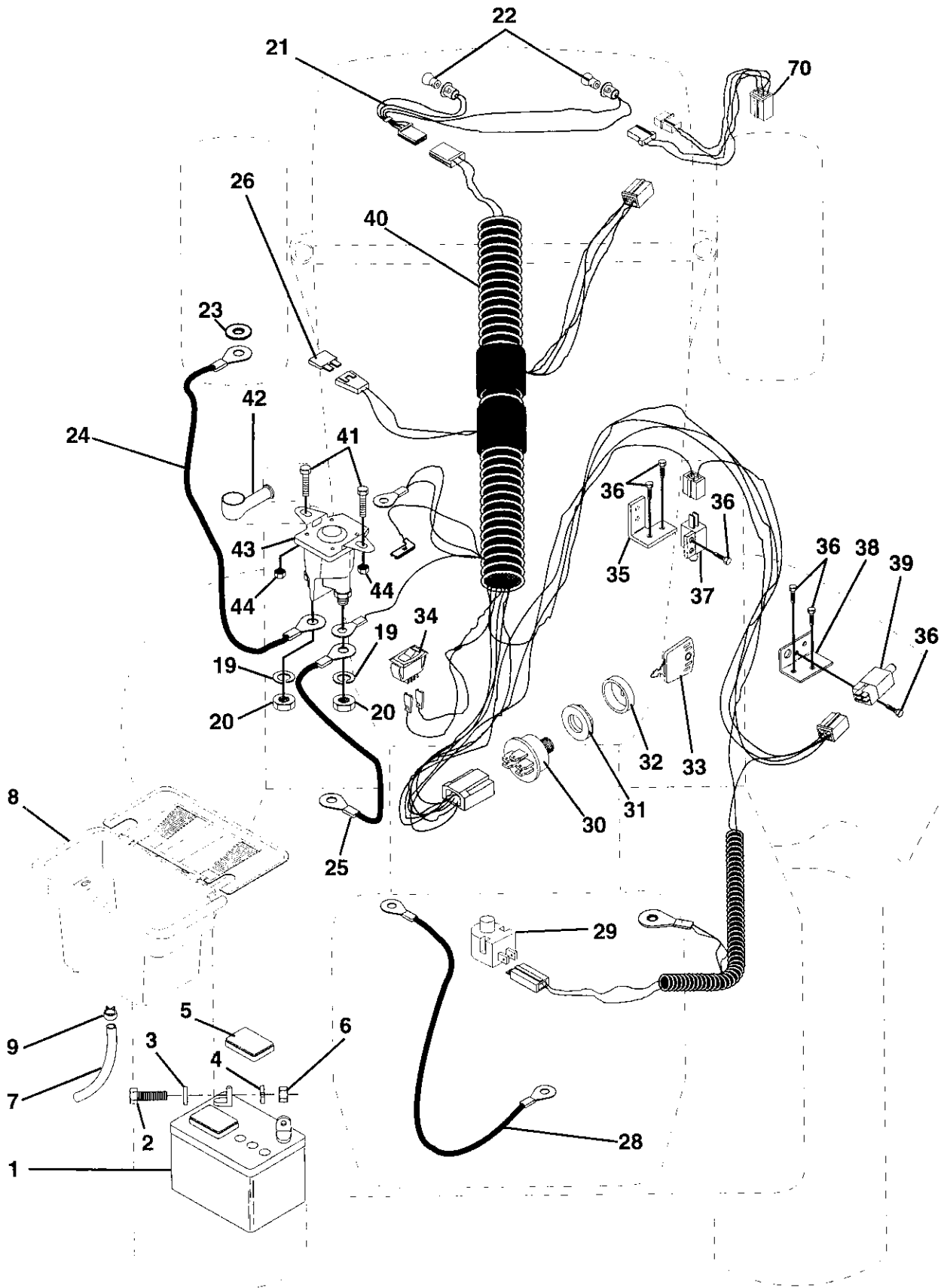
● NON-REMOVABLE CONNECTIONS

○ REMOVABLE CONNECTIONS

REPAIR PARTS

15 HP 42" TRACTOR - - MODEL NUMBER 917.257572

ELECTRICAL



REPAIR PARTS

15 HP 42" TRACTOR - - MODEL NUMBER 917.257572

ELECTRICAL

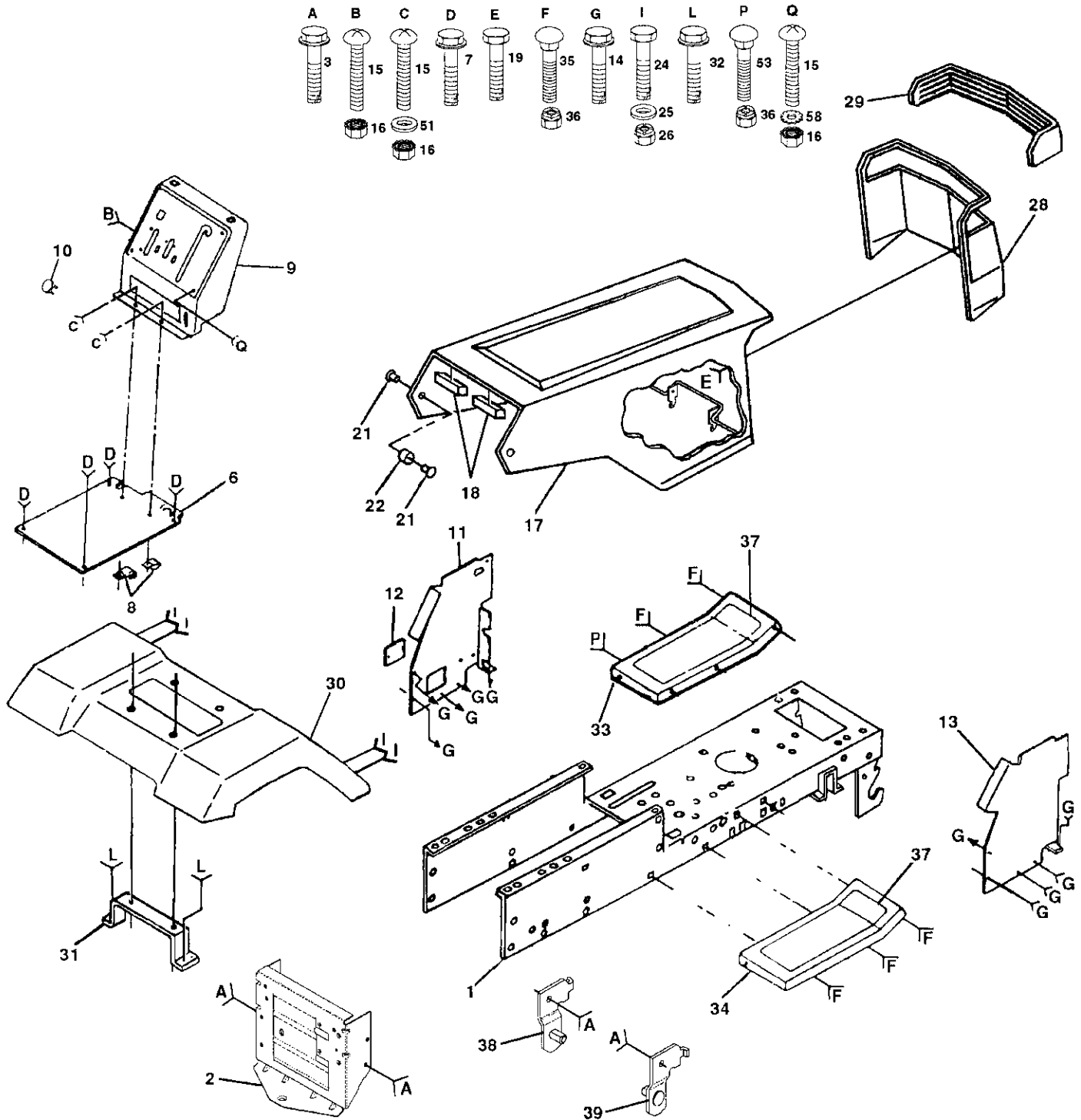
KEY NO.	PART NO.	DESCRIPTION
1	121265X	Battery 12 VOLT 25 AMP
2	74760412	Bolt Hex Hd 1/4-20unc X 3/4
3	19091016	Washer 9/32 X 5/8 X 16 Ga
4	10040400	Washer Lock Hvy Helical 1/4
5	121264X	Caps Battery 20/25/30 AMP
6	73220400	Nut Fin Hex 1/4-20 Unc
7	109238X	Tube Plastic 12"
8	129965	Case Battery Hng Mech W/lid
9	109596X	Clamp Hose Olive
19	10090400	Washer Lock 1/4
20	73350400	Nut Jam Hex 1/4-20 Unc
21	136850	Harness Asm Light W/4152j
22	4152J	Bulb Light #1156
23	11150400	Washer Lock Internal Tooth 1/4
24	4799J	Cable Battery 6 Ga 11" red
25	132202	Cable Battery 6 Ga 43" red
26	108824X	Fuse 30 AMP Auto Green
28	4207J	Cable Ground 6 Ga 12" black
29	121305X	Switch Plunger Nc Gray
30	140399	Switch Ign 5 Term Wo/wash/nut
31	140400	Nut Ignition
32	141226	Cover Sw Key Blk 1 25 Text SLT
33	140403	Key Ign Molded Craftsman
34	110712X	Switch Light Blk Blk Red
35	140336	Bracket Switch Interlock
36	17021008	Screw Tap Hex #10-24unc X 1/2
37	104445X	Switch Intlk Clutch Red 2 Term
38	108236X	Bracket Switch Clutch
39	109553X	Switch Intlk Clutch Red 4 Term
40	140414	Harness Ign Bs Dash Headlights
41	71110408	Bolt Blk. Fin Hex 1/4-20 Unc x 1/2
42	131563	Cover Terminal Red
43	138406	Solenoid
44	73640400	Nut Keps Hex 1/4-20 Unc
70	140422	Harness Engine B&S 14 OHV

NOTE: All component dimensions give in U.S. inches
1 inch = 25.4 mm

REPAIR PARTS

15 HP 42" TRACTOR - - MODEL NUMBER 917.257572

CHASSIS AND ENCLOSURES



REPAIR PARTS

15 HP 42" TRACTOR -- MODEL NUMBER 917.257572

CHASSIS AND ENCLOSURES

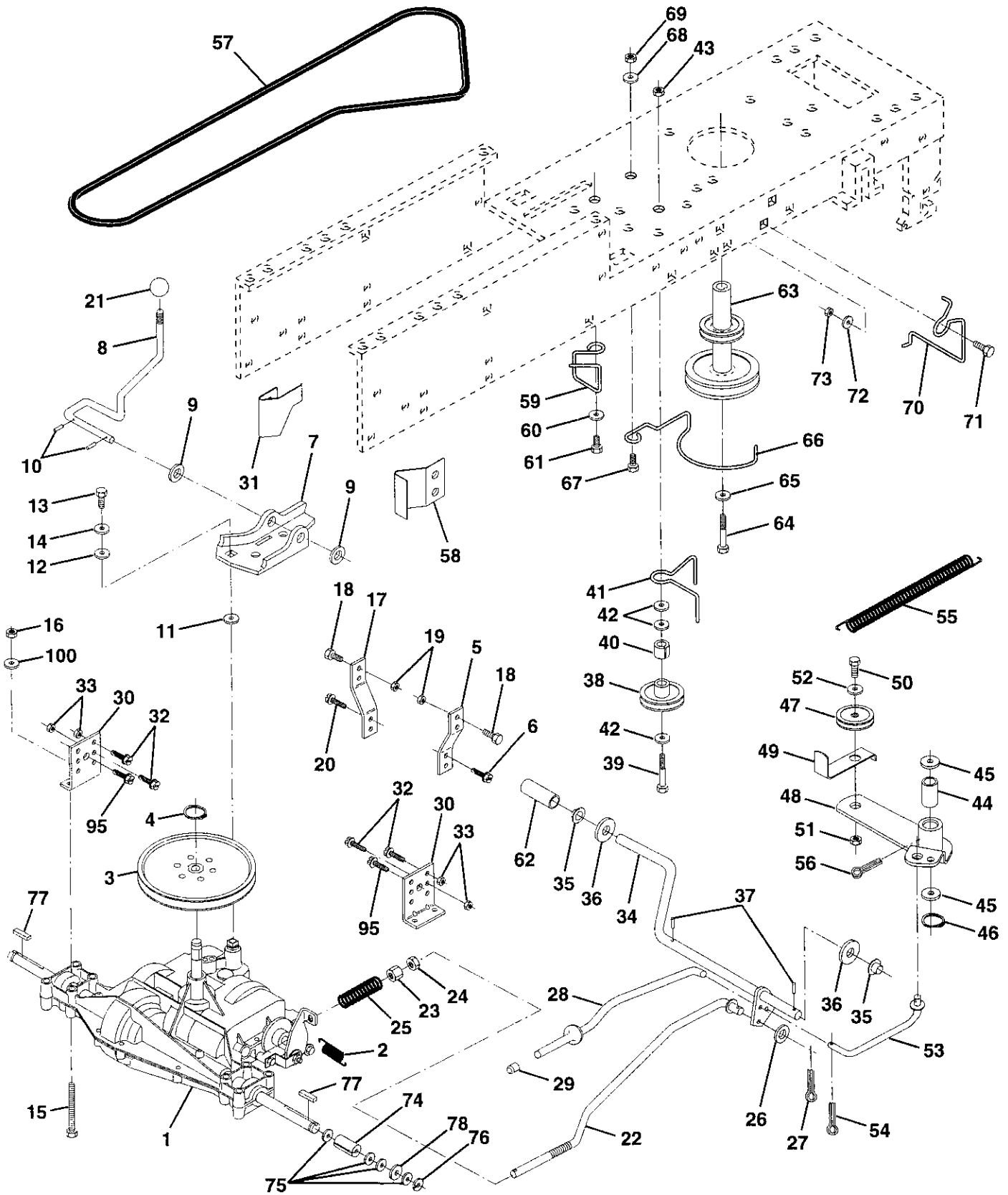
KEY NO.	PART NO.	DESCRIPTION
1	140341	Chassis Weldment 12ga 38/42
2	140356	Drawbar Stretch
3	17490612	Screw Thdrol 3/8-16x3/4 Ty-tt
6	140290X016	Saddle Silkscreen 6sp Sym S/S NONS
7	17490612	Screw Thdrol 3/8-16x3/4 Ty-tt
8	2751R	Clip Line Fuel 13/32 Mtg Hole
9	140637X013	Dash Silkscreened Sears Eng/Sy
10	5479J	Plug Button Blk 359 Dia
11	122795X	Panel Pnt Dash Lh
12	121794X	Cover Access Black Square
13	124031X012	Panel Silkscr Dash Rh Weldment
14	17490608	Screw Thdrol 3/8-16x1/2 Ty-tt
15	74180512	Screw Mach Trhd 5/16-18uncx3/4
16	STD541431	Nut Keps 5/16-18 Unc
17	131445X417	Hood Asm Pnt Weld Silver Powde
18	126938X	Bumper Hood
19	17521310	Screw Slted Hex Hd w/PI Washer
21	122933X	Rivet Ratchet Nylon
22	124479X	Washer Nylon Blk 28x 75x 19
24	STD523710	Bolt Fin Hex 3/8-16unc X 1
25	19131610	Washer 13/32 X 1 X 10 Ga
26	STD541437	Nut Lock 3/8-16 Unc
28	140135	Grille Grey
29	124029X	Lens Headlight Bar Clear
30	109872X417	Fender Pnt
31	136619	Bracket Pnt Fender
32	17490612	Screw Thdrol 3/8-16x3/4 Ty-tt
33	105465X417	Footrest Pnt Lh Perf (silver)
34	105464X417	Footrest Pnt Rh Perf (silver)
35	STD533707	Bolt Rdhd Sht Sqnk 3/8-16 X3/4
36	STD541437	Nut Crownlock 3/8-16 Unc
37	105466X	Pad Footrest Rbr Sq Craftsman
38	139886	Bracket, Asm. Pivot, L.H., Mower Rear
39	139887	Bracket, Asm. Pivot, R.H., Mower Rear
40	STD533710	Bolt, Carriage 3/8-16 x 1
50	STD541437	Locknut Hex W/Washer 3/8-16
51	STD551025	Washer 13/32 x 3/4 x 16 Ga.
53	STD533710	Bolt Carriage 3/8-16 x 1
54	STD523708	Bolt Hex 3/8-16 x 7/8
58	11050600	Washer, Lock Ext. Tooth 3/8

NOTE: All component dimensions given in U.S. inches
1 inch = 25.4 mm

REPAIR PARTS

15 HP 42" TRACTOR -- MODEL NUMBER 917.257572

DRIVE



REPAIR PARTS

15 HP 42" TRACTOR - - MODEL NUMBER 917.257572

DRIVE

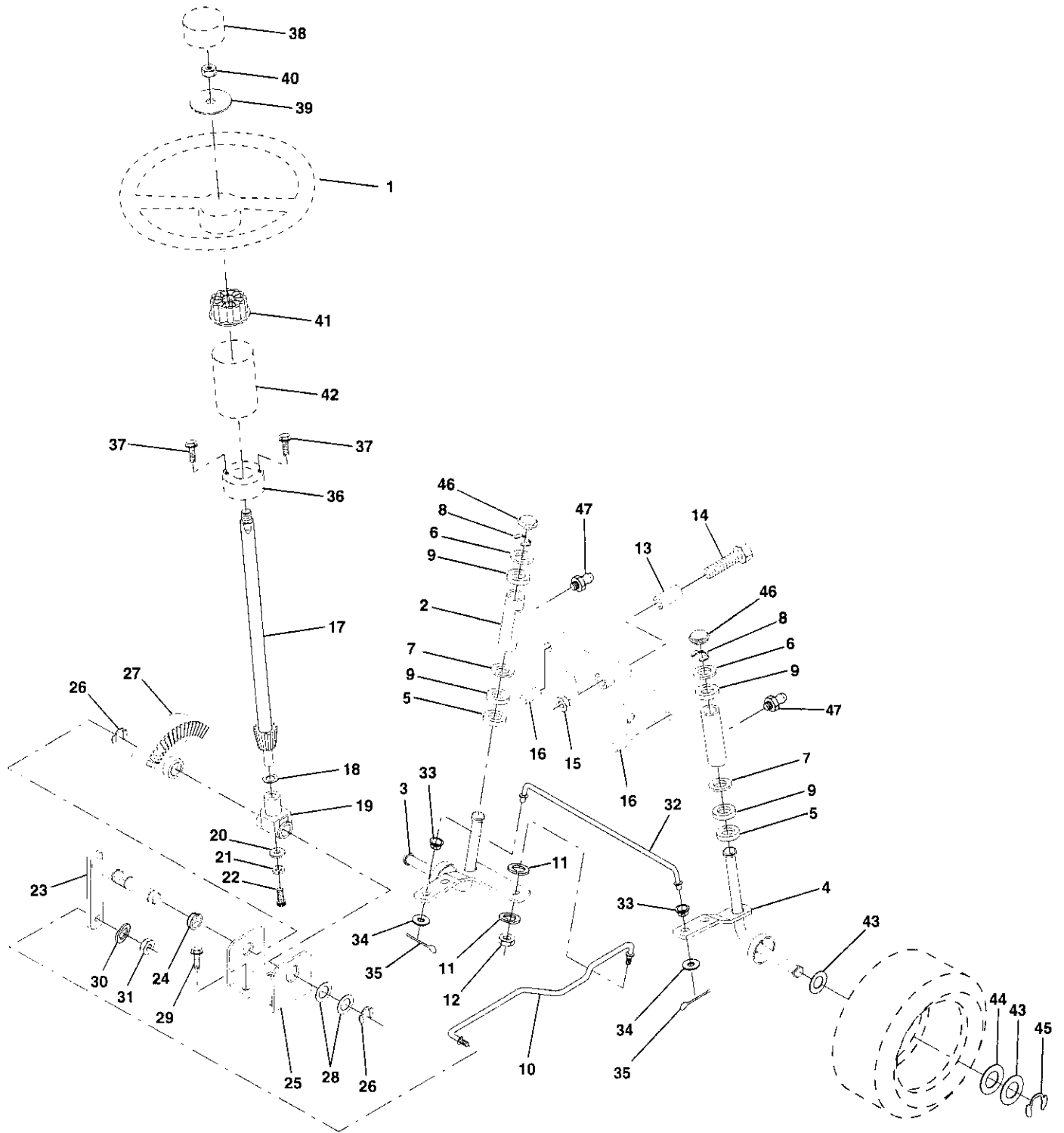
KEY NO.	PART NO.	DESCRIPTION	KEY NO.	PART NO.	DESCRIPTION
1	142603	Transaxle 6sp Std Dana, Model No. 4360-79	41	109070X	Keeper Belt Retainer
2	110422X	Spring Return Brake T/a Zinc	42	19131312	Washer 13/32 X 13/16 X 12 Ga
3	123666X	Pulley Transaxle Alum	43	STD541437	Nut Crownlock 3/8-16 Unc
4	12000028	Ring Retainer # 5100-62	44	105706X	Bearing Nyl 503 X 628 X 1 25
5	121520X	Strap Pnt Torque 30 Deg Blk	45	110812X	Washer Hardened
6	17490512	Screw Thdrol 5/16-18 X 3/4 Tyt	46	12000039	Ring Klip #t5304-50
7	130802	Plate Pnt Rod Shift T/a (blk)	47	127783	Pulley Idler V Groove Plastic
8	131679	Rod Shifter Blk (dana)	48	123789X	Bellcrank Asm
9	19151216	Washer 15/32 X 3/4 X 16ga	49	123205X	Retainer Belt Style Spring
10	STD561210	Pin Cotter 1/8 X 1 Cad	50	STD523715	Bolt Hex Hd 3/8-16unc X 1-1/2
11	105701X	Washer Plate Shf 388 Sq Hole	51	STD541437	Nut Crownlock 3/8-16 Unc
12	19091210	Washer 9/32 X 3/4 X 10 Ga	52	STD551037	Washer 13/32 X 13/16 X 16 Ga
13	71040412	Bolt Fin Hex 1/4-28unfx3/4 Gr8	53	105710X	Link Clutch 7 66
14	STD551125	Washer Lock Hvy Helical 1/4	54	STD561210	Pin Cotter 1/8 X 3/4 Cad
15	74780544	Bolt Fin Hex 5/16-18unc X 2-3/4	55	105709X	Spring Return Clutch 6 75
16	STD541431	Nut Lock 5/16-18 Unc	56	STD561210	Pin Cotter 1/8 X 3/4 Cad
17	121520X	Strap Pnt Torque 30 Deg Blk	57	130801	V-belt Ground Drive 95.25
18	STD523710	Bolt Fin Hex 3/8-16unc X 1	58	127274X	Keeper Belt Rh Lt Pnt/zinc 16g
19	STD541437	Nut Lock 3/8-16 Unc	59	140312	Retainer Belt Chassis Lh Zinc
20	17490512	Screw Thdrol 5/16-18 X 3/4 Tyt	60	19131312	Washer 13/32 X 13/16 X 12 Ga
21	106933X	Knob Rd 1/2-13 Plstc Thds Blk	61	17490612	Screw Thdrol 3/8-16x3/4 Ty-tt
22	130804	Rod Brake Lt	62	8883R	Cover Pedal Blk Std
23	STD541437	Nut Lock Hex W/wsh 3/8-16unc	63	140186	Pulley Engine
24	STD541237	Nut Hex Jam 3/8-16 Unc	64	71170764	Bolt Finhex 7/16-20 x 4 g5
25	106888X	Spring Rod Brake 2 00 Zinc	65	STD551143	Washer Lock Hvy Hlcl Spr 7/16
26	STD551037	Washer 13/32 X 13/16 X 16 Ga	66	129921	Keeper Belt Engine Lh Lt
27	STD561210	Pin Cotter 1/8 X 3/4 Cad	67	STD523710	Bolt Fin Hex 3/8-16unc X 1
28	140448	Rod Brake Parking Lt	68	19131312	Washer 13/32 X 13/16 X 12 Ga
29	124236X	Cap Parking Brake Red	69	STD541437	Nut Crownlock 3/8-16 Unc
30	130807	Bracket Transmission	70	134683	Guide Belt Dr Mower Rh
31	127275X	Keeper Belt Lh Lt 14 Ga	71	STD523710	Bolt Fin Hex 3/8-16unc X 1
32	STD523707	Bolt Fin Hex 3/8-16unc X 3/4	72	19132012	Washer 13/32 X 1-1/4 X 12 Ga
33	STD541431	Nut Lock 5/16-18 Unc	73	STD541437	Nut Crownlock 3/8-16 Unc
34	122424X	Shaft Asm Pedal Foot 1 930	74	109502X	Spacer Split .80x1.94
35	120183X	Bearing Nylon Blk 629 Id	75	121749X	Washer 25/32 X 1 1/4 X 16 Ga
36	STD551062	Washer 21/32 X 1 X 16 Ga	76	STD581075	Ring E #5133-75
37	STD571810	Pin Roll 3/16 X 1"	77	123583X	Key Square 2 0 X 1845/ 1865
38	123674X	Pulley Idler Flat	78	121748X	Washer 25/32 X 1 5/8 X 16ga
39	STD523727	Bolt Fin Hex 3/8-16unc X 2-3/4	95	17490612	Screw Thdrol 3/8-16 x 3/4 Ty Tt
40	4470J	Spacer Split 395 X 59 Bzp	100	19111216	Washer 11/32 x 3/4 x 16 Ga.

NOTE: All component dimensions given in U.S. inches
1 inch = 25.4 mm

REPAIR PARTS

15 HP 42" TRACTOR - - MODEL NUMBER 917.257572

STEERING ASSEMBLY



REPAIR PARTS

15 HP 42" TRACTOR - - MODEL NUMBER 917.257572

STEERING ASSEMBLY

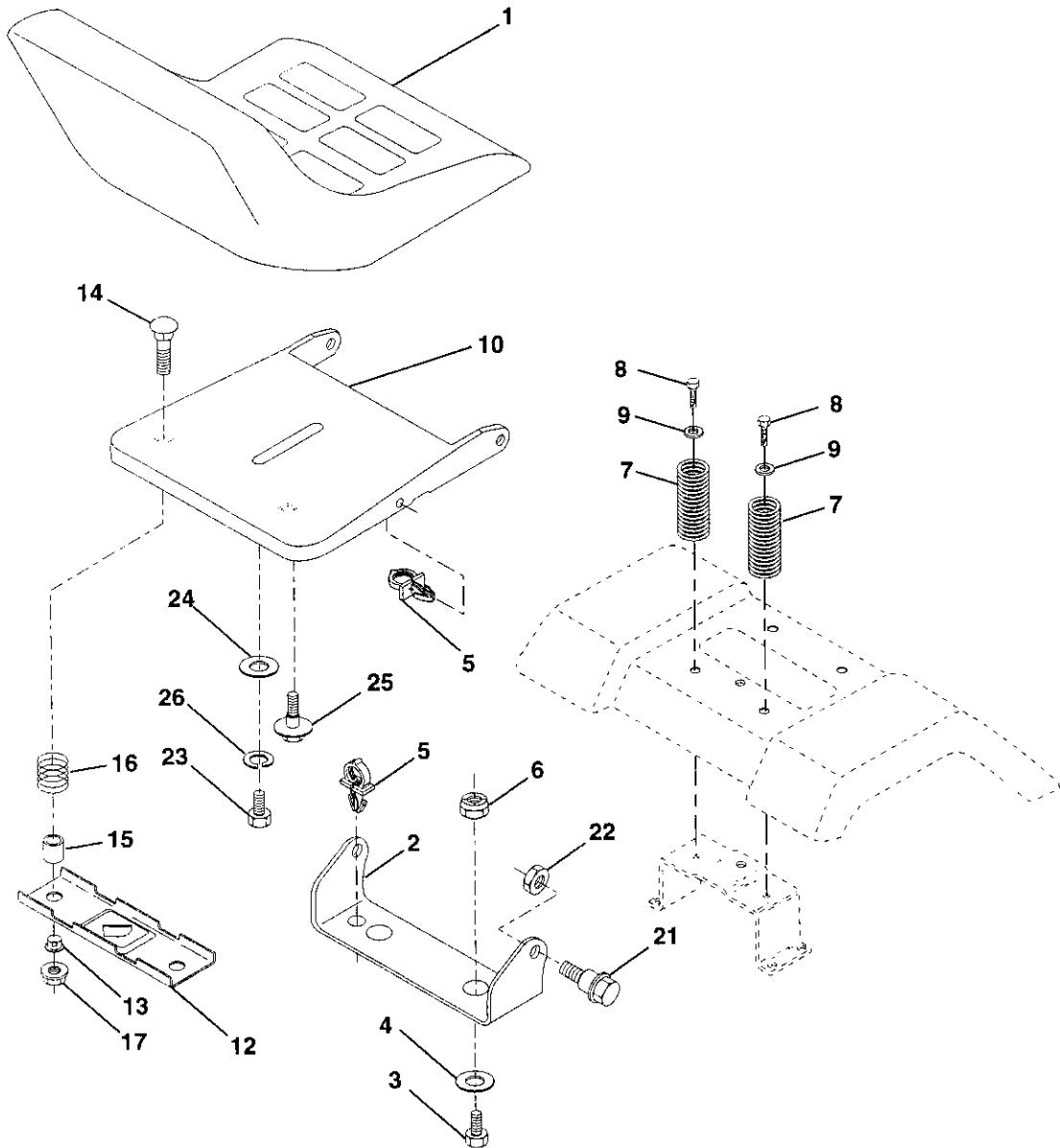
KEY NO.	PART NO.	DESCRIPTION
1	139768	Wheel Steering Std Black
2	142033	Axle Asm Front
3	135227	Spindle Asm Lh
4	135228	Spindle Asm Rh
5	6266H	Bearing Race Thrust Harden
6	121748X	Washer 25/32 X 1 5/8 X 16ga
7	19272016	Washer 27/32 X 1 1/4 X 16 Ga
8	12000029	Ring Klip #t5304-75
9	3366R	Bearing Col Strg Blk
10	130468	Link Drag Sol Ball Jt 20 064
11	STD551137	Washer Lock Hvy Hlcl Spr 3/8
12	73610600	Nut Fin Hex 3/8-24 Unf
13	110438X	Spacer Bearing Axle Front
14	74011056	Bolt Hex 5/8-11 Unc X 3-1/2
15	73901000	Locknut Flange 5/8-11 Unc
16	132624	Pin Axle 5/8 X 1 55/1 54 Lg
17	132614	Shaft Asm Strg 5/8 X 15 19 Lt
18	57079	Washer Thrust 515x 750x 033
19	124035X	Support Shaft
20	126684X	Washer Shim 1/4 X 5/8 X .062
21	STD551125	Washer Lock Hvy Helical 1/4
22	71070410	Screw Hex Socket 1/4-20 X 5/8
23	127501	Shaft Asm Pittman
24	109816X	Nyliner Snap In
25	124036X	Bracket Steering
26	12000029	Ring Klip #t5304-75
27	136874	Gear Sector
28	6266H	Bearing Race Thrust Harden
29	17490612	Screw Thdrol 3/8-16x3/4 Ty-tt
30	STD551137	Washer Lock Hvy Hlcl Spr 3/8
31	73610600	Nut Fin Hex 3/8-24 Unf
32	130465	Rod Tie Wire Form 19 75 Mech
33	126847X	Bushing Rod Tie Blk Lt
34	19131416	Washer 13/32 X 7/8 X 16ga
35	STD561210	Pin Cotter 1/8 X 3/4 Cad
36	132196	Bushing Strg 5/8 Id Dash
37	STD611005	Screw Slftp #10-16 X 1/2 Ty-b
38	139769	Insert Cap Strg Wheel Std Blk
39	19133808	Washer 13/32 X 2-3/8 X 8 Ga
40	STD541537	Nut Lock Center 3/8-24unf
41	104820X	Adaptor Wheel Strg 640/ 635id
42	124417X	Boot Shaft Steering
43	121749X	Washer 25/32 X 1 1/4 X 16 Ga
44	121748X	Washer 25/32 X 1 5/8 X 16ga
45	12000029	Ring Klip #t5304-75
46	121232X	Cap Spindle Fr Top Blk
47	6855M	Fitting Grease

NOTE: All component dimensions given in U.S. inches
1 inch = 25.4 mm

REPAIR PARTS

15 HP 42" TRACTOR - - MODEL NUMBER 917.257572

SEAT ASSEMBLY



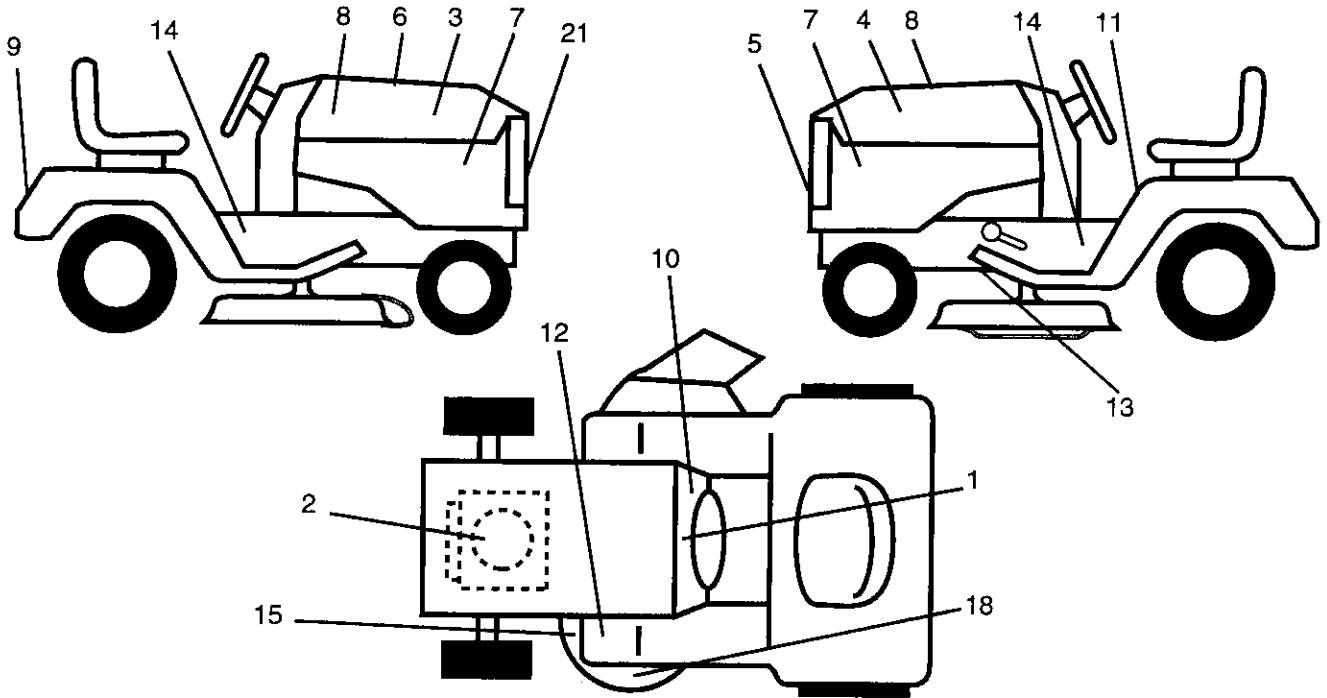
KEY NO.	PART NO.	DESCRIPTION	KEY NO.	PART NO.	DESCRIPTION
1	127437	Seat V350 Blk/blk Craftsman	14	72050411	Bolt Rdhd Sht Nk 1/4-20x1-3/8
2	140551	Bracket Pnt Pivot Seat (blk)	15	134300	Spacer Split 28 X 96 Zinc
3	STD523710	Bolt Fin Hex 3/8-16unc X 1	16	121250X	Spring Cprsn 1 27 Blk Pnt
4	19131610	Washer 13/32 X 3/4 X 10 Ga	17	123976X	Nut Lock 1/4 Lge Flg Gr 5 Zinc
5	140407	Clip Push In .375 x .250	21	139888	Bolt Shoulder 5/16-18 Unc Blkz
6	STD541437	Nut Crownlock 3/8-16 Unc	22	STD541431	Nut Crown Lock 5/16-18
7	124181X	Spring Seat Cprsn 2 250 Blk Zi	23	74780814	Bolt Fin Hex 1/2-13 X 7/8 Gr 5
8	17490616	Screw Thdrol 3/8-16 X 1 Ty-tt	24	19171912	Washer 17/32 X 1-3/16 X 12 Ga
9	19131614	Washer 13/32 X 1 X 14 Ga	25	127018X	Bolt Shoulder 5/16-18 X 62
10	140552	Pan Pnt Seat (blk)	26	STD551150	Washer Lock Hvy Hlcl Spr 1/2
12	121246X	Bracket Pnt Mounting Switch			
13	121248X	Bushing Snap Blk Nyl 50 ld			

NOTE: All component dimensions given in U.S. inches.
1 inch = 25.4 mm

REPAIR PARTS

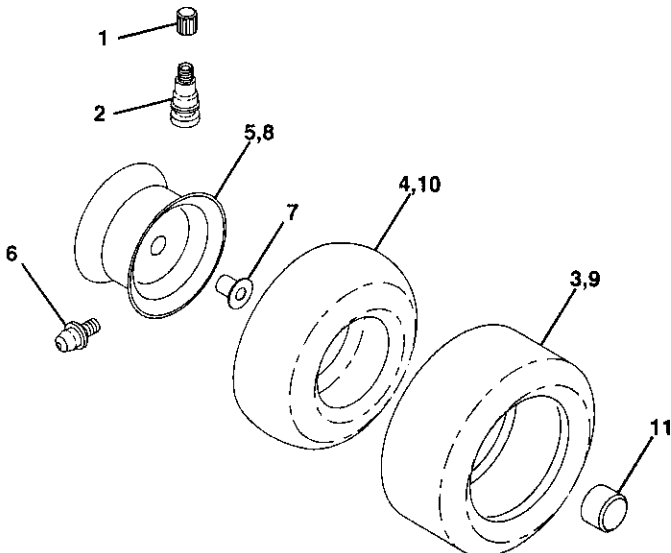
15 HP 42" TRACTOR - - MODEL NUMBER 917.257572

DECALS



KEY NO.	PART NO.	DESCRIPTION	KEY NO.	PART NO.	DESCRIPTION
1	138955	Decal Instruction Operat Eng	10	138836	Decal Dash Slope Lt
2	141130	Decal B&S 15 HP IC/G HV Craftsman	11	137537	Decal Caution English/Spanis
3	140560	Decal Hood Slope Rh Craftsman	12	4900J	Decal Clutch/brake English
4	140561	Decal Hood Slope Lh Craftsman	13	109199X	Decal V-belt Dr Sch Tractor E
5	132674	Decal Grille Lt4000 Craft Usa	14	131473	Decal Chassis 6 Sp 42"
6	133644	Decal Maint Customer Sears Dom	15	136830	Decal Mower Drive Schematic 38
7	142248	Decal Panel Side l/c Gold/blk	18	133179	Decal Mower Qc System
8	142247	Decal Insert Hood 15 Hp OHV Blk	21	131265	Decal Lightbox
9	125880X	Decal Fender Craftsman Red	--	138311	Decal Lift Handle
			--	143909	Manual, Owner's (English)
			--	143910	Manual, Owner's (Spanish)

WHEELS & TIRES



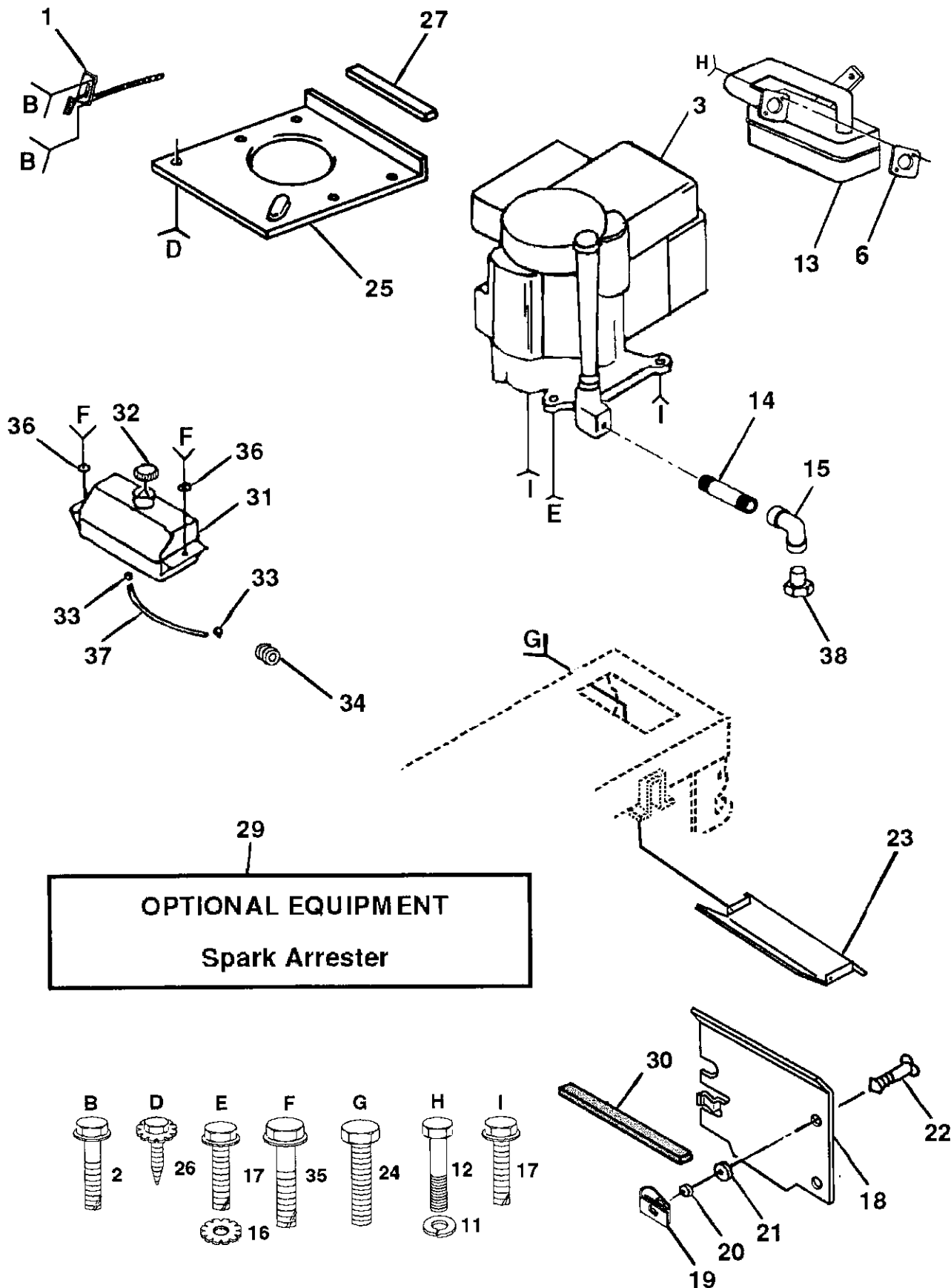
KEY NO.	PART NO.	DESCRIPTION
1	59192	Cap Value Tire
2	65139	Stem Value
3	106222X	Tire F Ts 15 X 6 0 - 6 Service
4	59904	Tube Inner Front #35060
5	106732X417	Rim Asm 6"front Silver Service
6	278H	Fitting Grease
7	9040H	Bearing Flange
8	106108X417	Rim Asm 8"rear Silver Service
9	106268X	Tire R Ts 18x9 5-8 Service
10	7152J	Tube Rear 9 5 X 8 Service
11	104757X	Cap Axle Blk 1 50 X 1 00

NOTE: All component dimensions given in U.S. inches.
1 inch = 25.4 mm

REPAIR PARTS

15 HP 42" TRACTOR -- MODEL NUMBER 917.257572

ENGINE



REPAIR PARTS

15 HP 42" TRACTOR - - MODEL NUMBER 917.257572

ENGINE

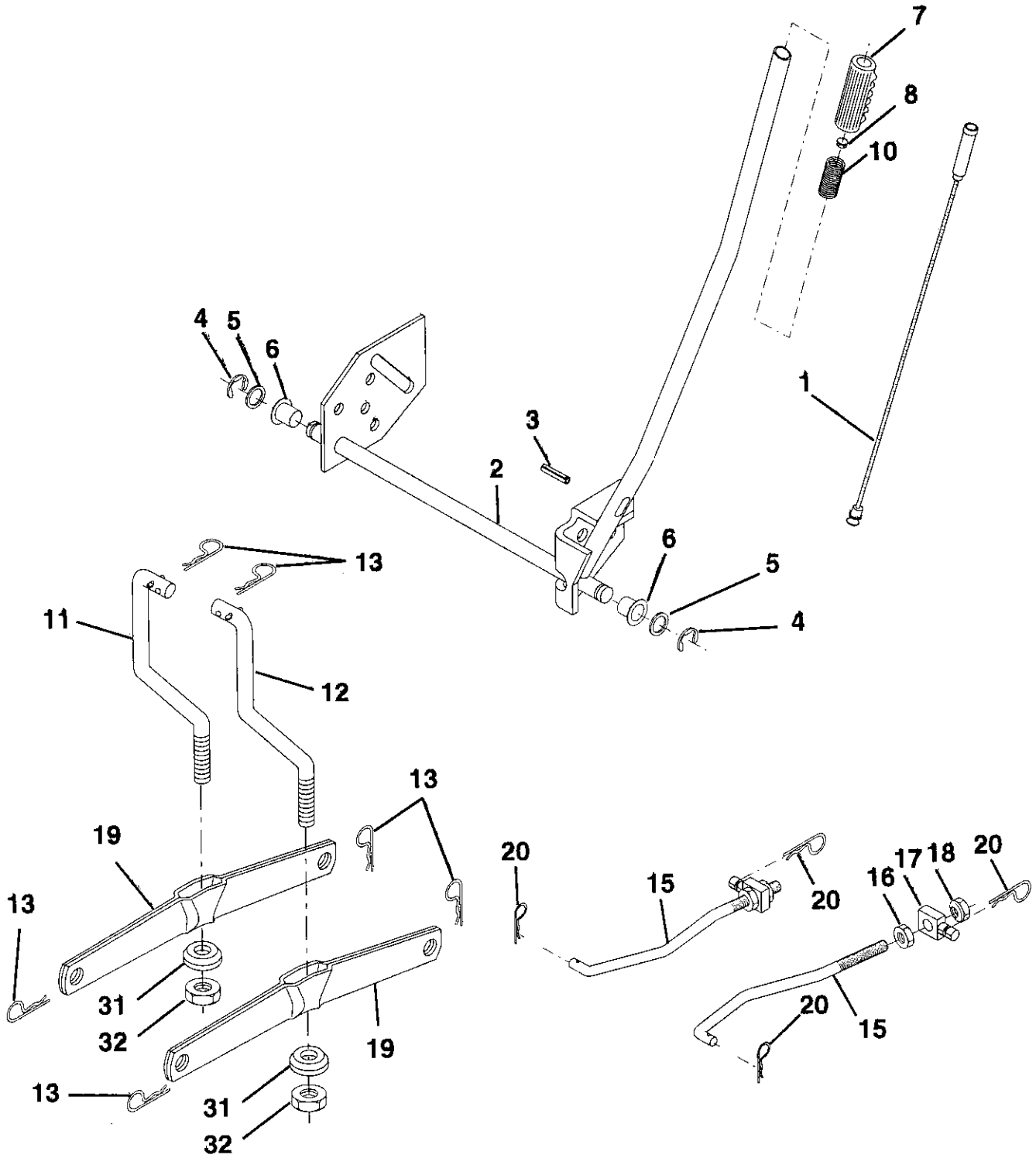
KEY NO.	PART NO.	DESCRIPTION
1	132759	Control Throt Rh Blk Pdl 15 10
2	17720410	Screw Hex Thd Cut 1/4-20x5/8 T
3	141129	Engine B&s 14hp ICQ Dual 1 Vt, Model No. 28N707, Type No. 0121-01
6	125593X	Gasket 1 313 Id Tin Plated
11	STD551131	Washer Lock Hvy Hlcl Spr 5/16
12	71070512	Screw Hexhd Cap 5/16-18x3/4
13	137352	Muffler Exhaust B&s Lt
14	13280324	Nipple Pipe 3/8 Npt X 3"
15	13200300	Elbow Std 90 Degree 3/8-18 Npt
16	STD551237	Washer Lock Ext Tooth 3/8
17	17490620	Screw Thdrol 3/8-16x1-1/4 Tytt
18	136718	Shield Pnt Heat
19	105839X	Receptacle 1/4 Turn Dacrotized
20	105838X	Retainer 1/4 Turn 365odx 222id
21	STD551025	Washer 9/32 X 5/8 X 16 Ga
22	123650X	Stud 1/4 Turn (replaces 105751
23	128953	Shield Pnt Heat Browning Grass
24	STD601005	Screw Tap Hex #10-24unc X 1/2
25	124027X	Shield Pnt Heat Hood Lt
26	17030808	Screw Spiderloc Hexhd#8x1/2 Ab
27	105037X	Strip Foam 18"
29	137180	Arrestor Spark
30	127057X	Pinch Weld Hood Black 2.00
31	109202X	Tank Fuel 1 25 Fr
32	123549X	Cap Asm Fuel W/sym Vented
33	123487X	Clamp Hose Blk
34	124028X	Bushing Snap Nyl Blk Fuel Line
35	17490412	Screw Hexwsh Thdrol 1/4-20x3/4
36	19091416	Washer 9/32 X 7/8 X 16ga
37	137040	Line Fuel 20"
38	---	Plug Oil Drain (Order From Engine Manufacturer)

NOTE: All component dimensions given in U.S. inches
1 inch = 25.4 mm

REPAIR PARTS

15 HP 42" TRACTOR - - MODEL NUMBER 917.257572

LIFT



REPAIR PARTS

15 HP 42" TRACTOR - - MODEL NUMBER 917.257572

LIFT

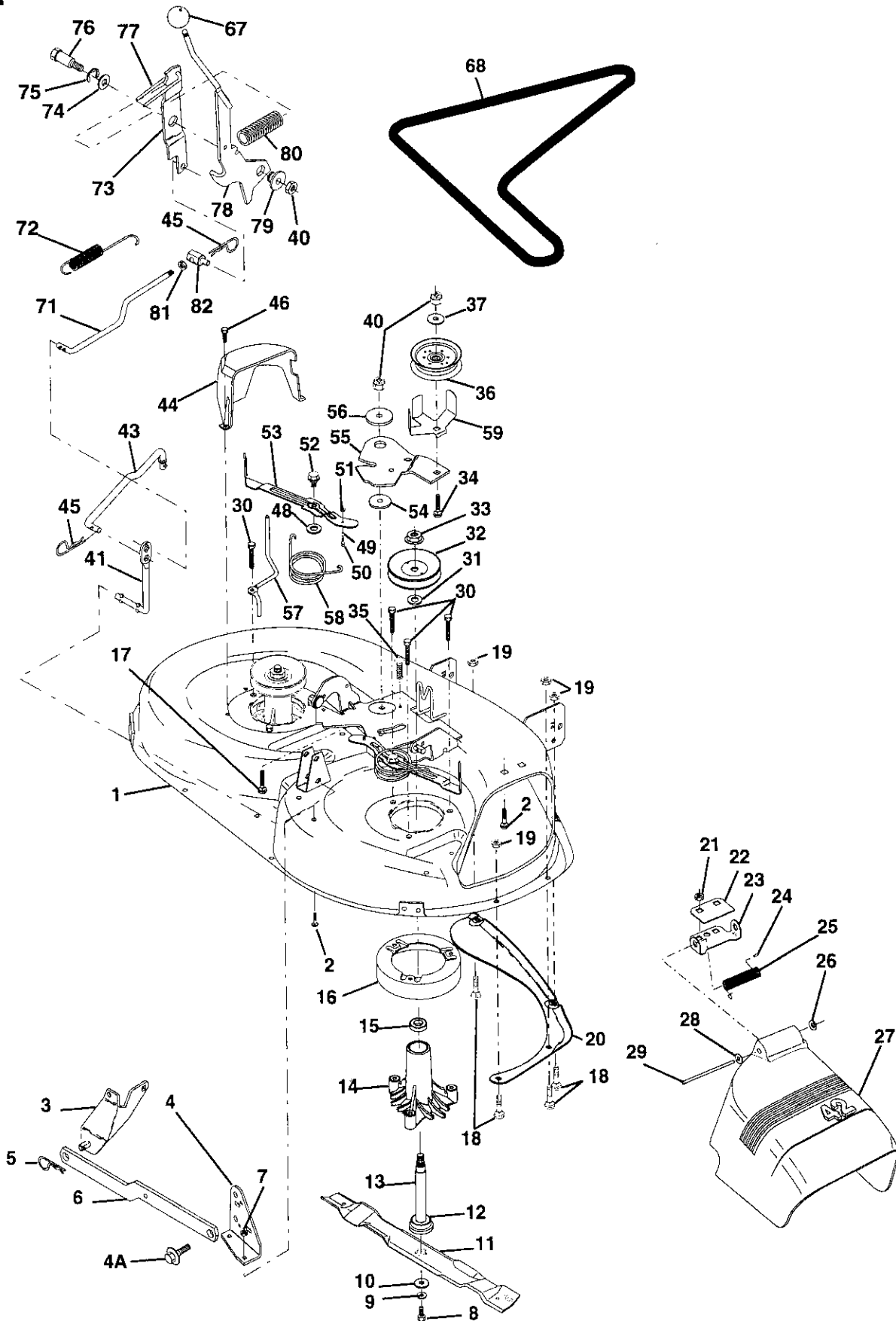
KEY NO.	PART NO.	DESCRIPTION
1	136973	Rod Asm. Lever
2	122507X	Shaft Asm. Lift
3	105767X	Pin Groove
4	12000002	E Ring #5133-62
5	19211621	Washer 21/32 x 1 x 21 Ga.
6	120183X	Bearing Nylon
7	125631X	Grip Handle Fluted
8	122365X	Button Plunger Read
10	122512X	Spring Cprsn
11	139865	Link Lift Lh Fixed Length
12	139866	Link Lift Rh Fixed Length
13	4939M	Retainer Spring
15	127218	Link Front
16	73350800	Nut Jam Hex 1/2-13 Unc
17	130171	Trunnion Blk Zinc
18	73800800	Nut Lock W/Wsh 1/2-13 Unc
19	139868	Arm Suspension Mower
20	3146R	Retainer Spring
31	140302	Bearing, Pvt. Lift. Spherical
32	73810600	Nut Lock 3/8-24 W/Nylon Insert

NOTE: All component dimensions given in U.S. inches
1 inch = 25.4 mm

REPAIR PARTS

15 HP 42" TRACTOR -- MODEL NUMBER 917.257572

MOWER



REPAIR PARTS

15 HP 42" TRACTOR - - MODEL NUMBER 917.257572

MOWER

KEY NO.	PART NO.	DESCRIPTION	KEY NO.	PART NO.	DESCRIPTION
1	140081	Mower Housing	42	STD560907	Cotter Pin
2	STD533107	Bolt	43	140083	Rod, Clutch, Secondary, with Nibs
3	138017	Bracket Assembly, Sway Bar, Front	44	140088	Guard, Mandrel, L.H.
4	138440	Bracket Assembly, Sway Bar	45	STD624003	Retainer
4A	132827	Bolt, Shoulder	46	137729	Screw, Thd. Roll 1/4-20 x 5/8
5	STD624008	Retainer Spring	48	133944	Washer, Hardened
6	130832	Arm, Suspension, Rear	49	133940	Roller Assembly, Cam Follower
7	73800500	Locknut 5/16-18	50	131340	Bolt, Shoulder #10-24 Grade 5
8	850857	Bolt, Hex 3/8-24 x 1.25 Grade 8	51	STD541410	Locknut
9	STD551137	Washer, Lock	52	139888	Bolt, Shoulder 5/16-18 UNC
10	140296	Washer, Hardened	53	131845	Arm Assembly, Pad, Brake
11	134149	Blade, Mulching	54	133943	Washer, Hardened
12	129895	Bearing, Ball	55	140084	Arm, Idler
13	137645	Shaft Assembly, Mandrel, Vented (Includes Key Number 6)	56	122052X	Spacer, Retainer
14	128774	Housing, Mandrel, Vented	57	140090	Keeper Belt LH Front
15	110485X	Bearing, Ball, Mandrel	58	140086	Spring Torsion Brakes
16	140329	Stripper, Vented Mower Deck	59	141043	Guard, TUV Idler
17	72110618	Bolt, Carriage 3/8-16 x 2-1/4	67	106932X	Knob, Round 3/8-16 UNC
18	72140505	Bolt, Carriage 5/16-18 x 5/8	68	140067	V-Belt
19	73800500	Locknut 5/16-18	71	142427	Rod, Clutch, Primary, with Nibs
20	136888	Baffle, Vortex	72	131870	Spring, Return
21	STD541431	Nut	73	127847	Arm, Clutch, Secondary
22	134753	Stiffener Bracket	74	121748X	Washer 25/32 x 1-5/8 x 16 Gauge
23	131267	Bracket, Deflector	75	12000029	Ring, Klip
24	105304X	Cap, Sleeve	76	128903	Bolt, Shoulder 3/8-16 UNC x 1.44
25	123713X	Spring, Torsion, Deflector	77	127845	Keeper, Spring
26	110452X	Nut, Push	78	140334	Arm, Clutch, Primary
27	130968	Shield, Deflector	79	127498	Bushing, Large, Brass
28	19111016	Washer 11/32 x 5/8 x 16 Gauge	80	128759	Spring, Mower Clutch
29	131491	Rod, Hinge	81	73350600	Nut Hex Jam 3/8-16 UNC
30	138776	Screw Thdrol Hex Head Zinc Mwr	82	142028	Trunnion Adj.
31	129963	Washer, Spacer	--	130794	Mandrel Assembly (Includes Key Numbers 8-10, 12-15, 31 and 32)
32	129861	Pulley, Mandrel	--	140475	Mower Deck, Complete
33	137266	Nut, Toplock, Flanged			
34	STD533717	Bolt			
35	133835	Fastner, Christmas Tree			
36	131494	Pulley, Idler, Flat			
37	19131316	Washer 13/32 x 13/16 x 16 Gauge			
40	STD541437	Nut			
41	133551	Rod, Pivot, with Nibs			

Available mulcher plate kit not included with tractor:

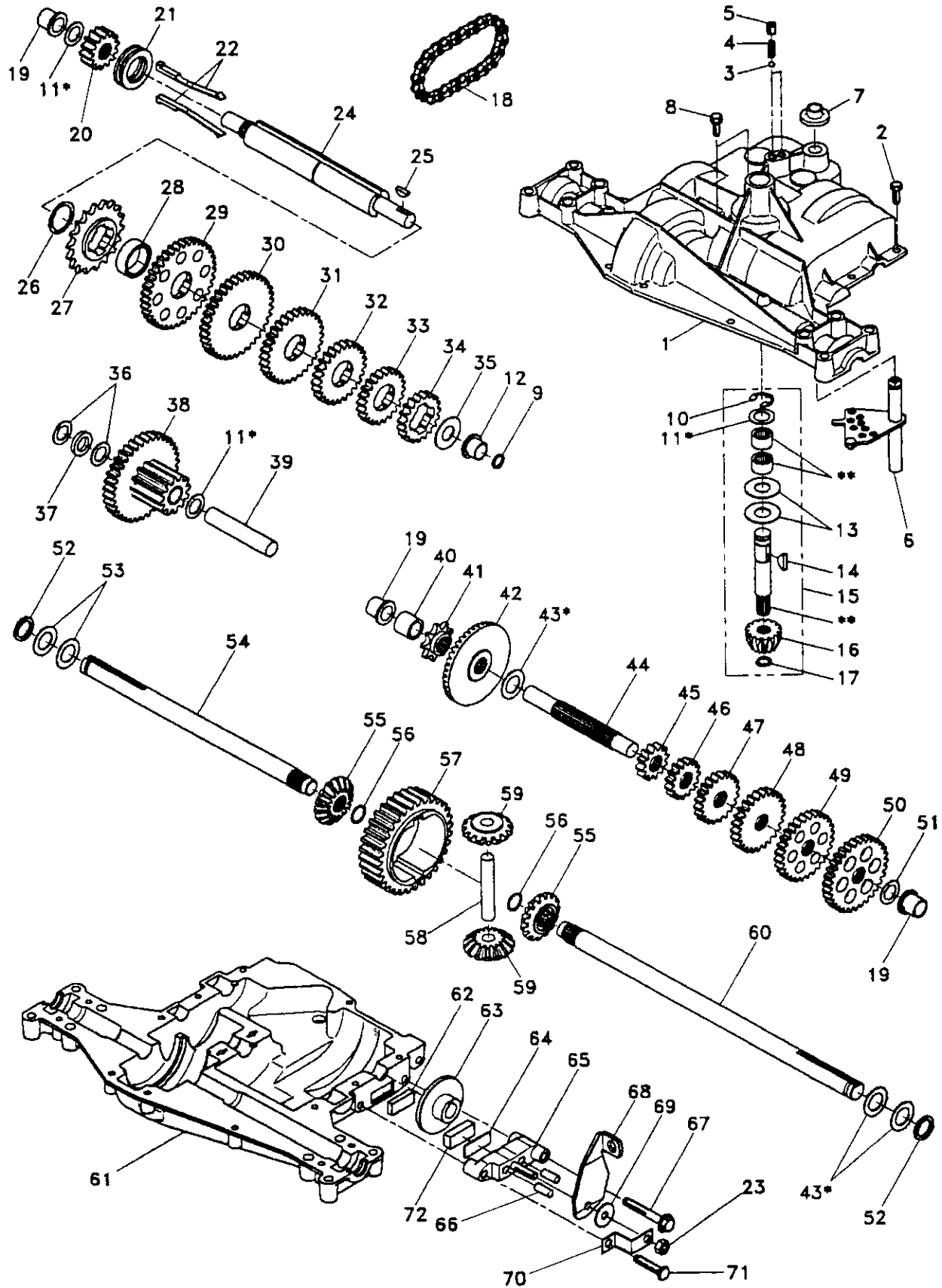
-- 141112 Mulcher Close-out Plate Kit

NOTE: All component dimensions given in U.S. inches.
1 inch = 25.4 mm.

REPAIR PARTS

15 HP 42" TRACTOR - MODEL NUMBER 917.257572

DANA TRANSAXLE - MODEL NUMBER 4360-79



REPAIR PARTS

15 HP 42" TRACTOR - MODEL NUMBER 917.257572

DANA TRANSAXLE - MODEL NUMBER 4360-79

KEY PART NO.	NO.	DESCRIPTION	KEY PART NO.	NO.	DESCRIPTION
1	142671	Housing, Upper	41	105928X	Sprocket, 9 Teeth
2	2274J	Screw, Self-Tapping, Large 1/4-20 x .734	42	110084X	Gear, Bevel, 42 Teeth
3	134400	Ball, Detent	43	134394	* Assembly, Kit, Shim .750 Shaft
4	105904X	Spring, Detent	44	120473X	Shaft, Drive
5	105905X	Screw, Set	45	142678	Gear, Spur, 12 Teeth
6	138235	Kit, Shifter Assembly	46	142679	Gear, Spur, 15 Teeth
7	134399	Boot, Shifter	47	120407X	Gear, Spur, 20 Teeth
8	134791	Screw, Tapping w/Sealer	48	106589X	Gear, Spur, 25 Teeth
9	138241	Square Ring	49	120408X	Gear, Spur, 28 Teeth
10	142672	Ring, Retaining	50	105937X	Gear, Spur, 31 Teeth
11	134793	* Assembly, Kit, Shim .625 Shaft	51	2226J	Washer, Plain .632 x 1.00 x .060
12	142673	Bearing, Flange	52	134401	Washer, Neoprene
13	120415X	Washer, Plain .632 x 1.38 x .046	53	2264J	Washer, Plain .758 x 1.25 x .031
14	142674	Key, Woodruff, #9	54	120474X	Axle, L.H.
15	138234	Assembly, Kit, Input Shaft	55	110081X	Gear, Miter, 15 Teeth
16	110078X	Pinion, Bevel, 14 Teeth	56	105941X	Ring, Retaining
17	105909X	Ring, Retaining	57	110071X	Gear, Spur, 32 Teeth
18	105910X	Chain, 24 Pitches	58	120952X	Shaft, Cross
19	105911X	Bearing, Flange	59	110082X	Gear, Miter, 15 Teeth
20	142675	Gear, Spur, 14 Teeth	60	120475X	Axle, R.H.
21	138246	Collar, Clutch	61	142680	Housing, Lower
22	138236	Assembly, Kit, Clutch Keys	62	120961X	Puck, Friction
23	73810500	Locknut 5/16-24	63	7294J	Disc, Brake
24	142676	Shaft, Intermediate	64	108989X	Spacer
25	2244J	Key, Woodruff, #61	65	120953X	Jaw, Brake
26	105916X	Ring, Retaining	66	120954X	Pin, Dowel
27	120470X	Sprocket, 18 Teeth	67	134799	Screw, Self-Tapping, Large 5/16-18 x 2.25
28	110070X	Spacer	68	138244	Lever, Actuating
29	142677	Gear, Spur, 37 Teeth	69	108996X	Washer, Plain .321 x 1.00 x .055
30	142681	Gear, Spur, 35 Teeth	70	120956X	Bracket, Anti-Rotation
31	120405X	Gear, Spur, 30 Teeth	71	106596X	Screw, Self-Tapping, Large 5/16-18 x 1.44
32	108980X	Gear, Spur, 25 Teeth	72	120951X	Puck, Friction
33	120406X	Gear, Spur, 22 Teeth	73	120416X	Grease
34	134796	Gear, Spur, 19 Teeth			
35	105925X	Washer, Plain .640 x 1.37 x .061			
36	2232J	Washer, Plain .632 x 1.00 x .026			
37	108978X	Spacer .630 x 1.00 x .169			
38	110079X	Assembly, Gear, Combination of 12 Teeth and 35 Teeth			
39	124639X	Shaft, Idler			
40	120472X	Spacer .635 x .875 x .755			

* Use in combinations to maintain proper clearances

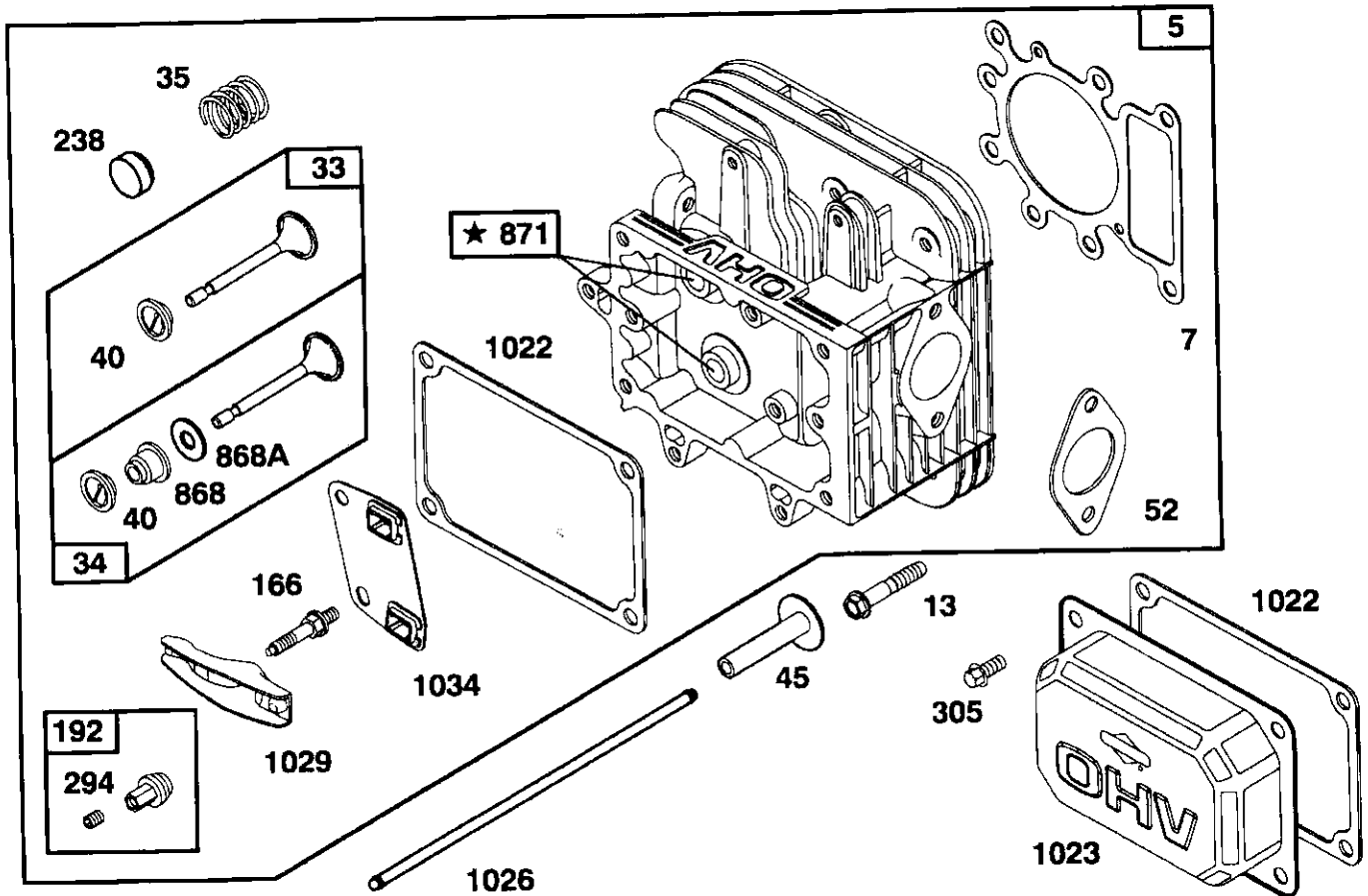
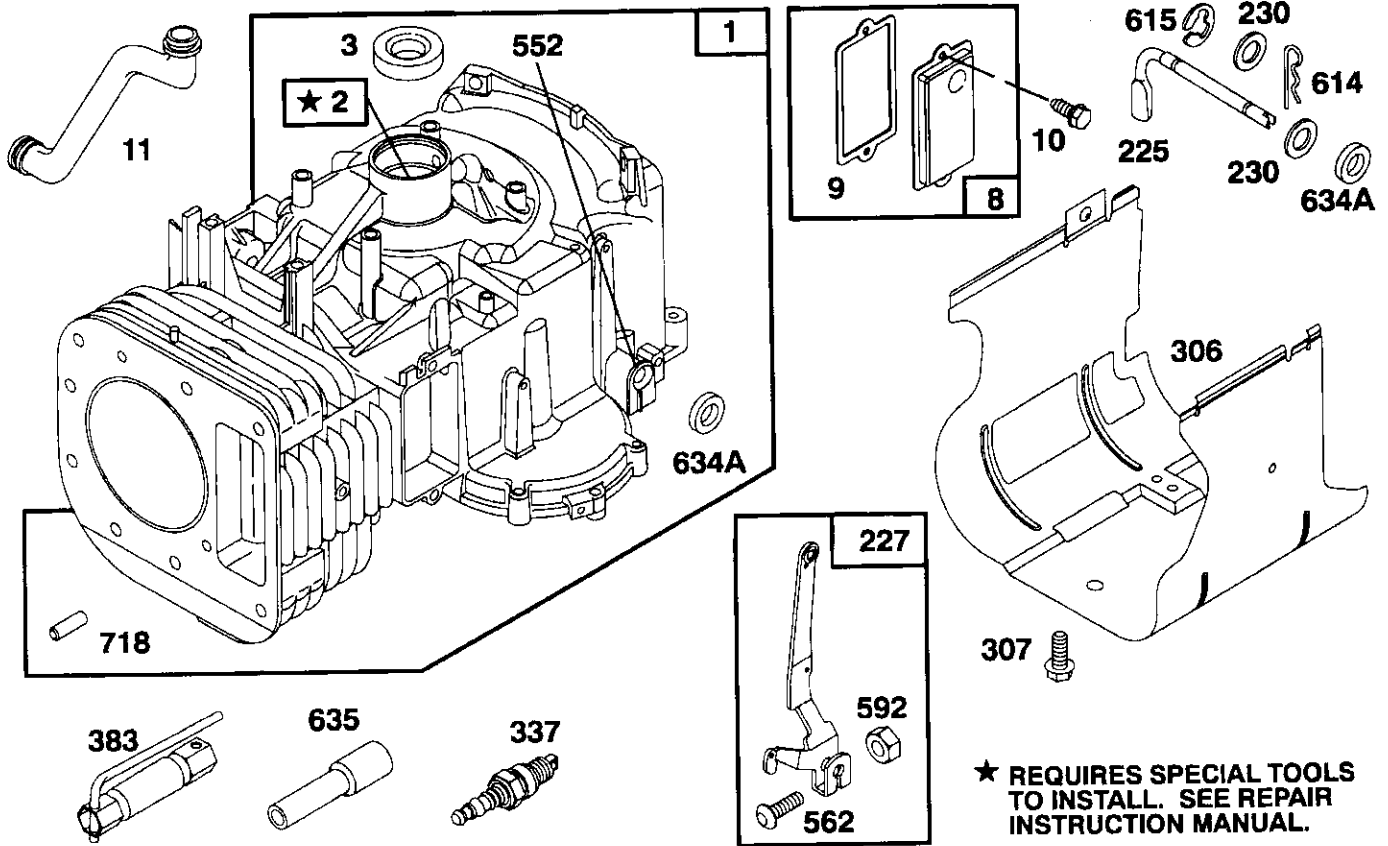
** Order Key No. 15

NOTE: All component dimensions given in U.S. inches
1 inch = 25.4 mm

REPAIR PARTS

15 HP 42" TRACTOR - - MODEL NUMBER 917.257572

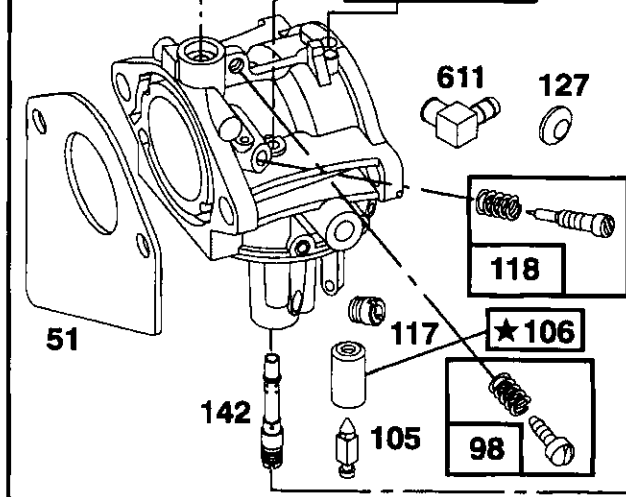
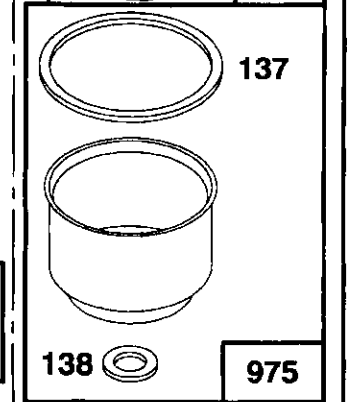
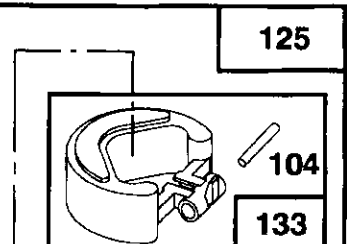
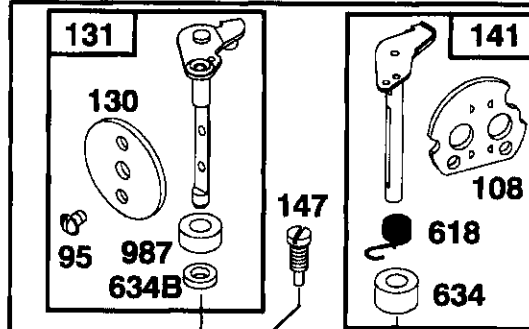
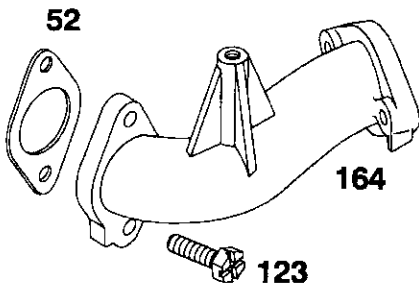
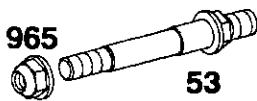
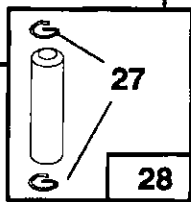
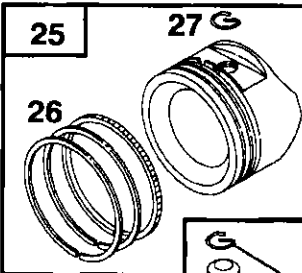
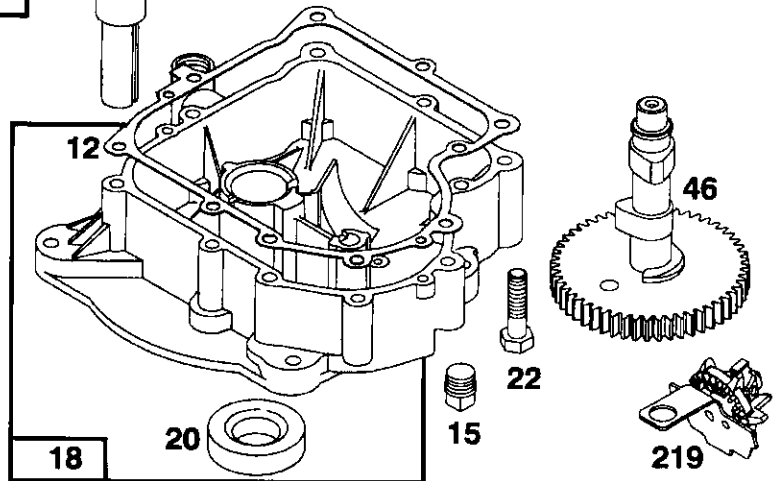
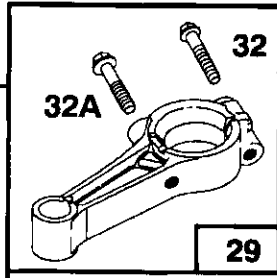
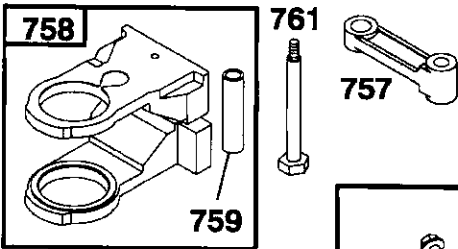
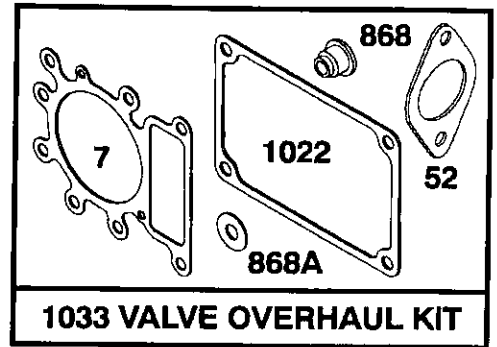
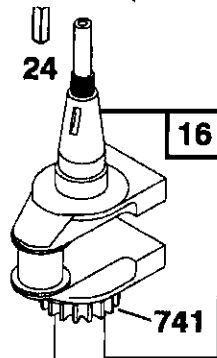
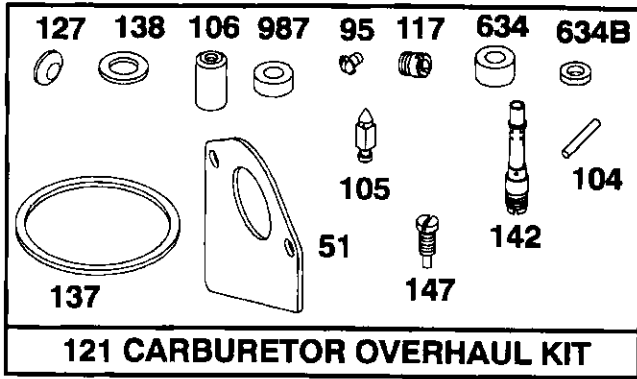
BRIGGS & STRATTON ENGINE - MODEL NUMBER 28N707, TYPE NUMBER 0121-01



REPAIR PARTS

15 HP 42" TRACTOR - - MODEL NUMBER 917.257572

BRIGGS & STRATTON ENGINE - MODEL NUMBER 28N707, TYPE NUMBER 0121-01

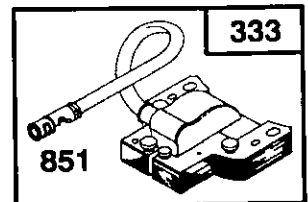
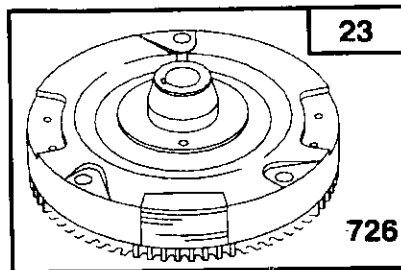
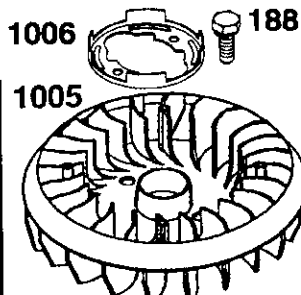
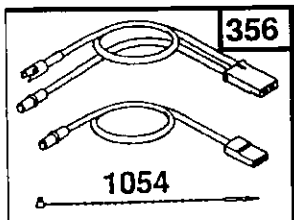
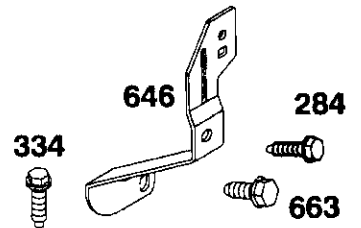
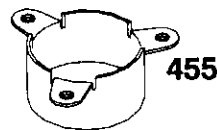
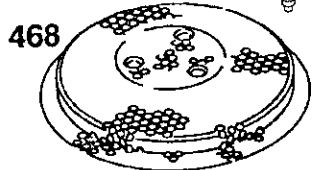
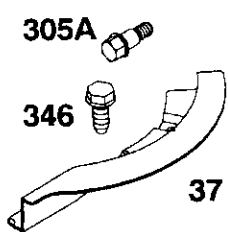
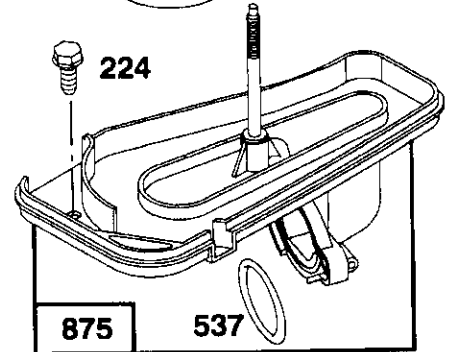
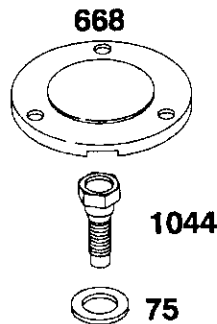
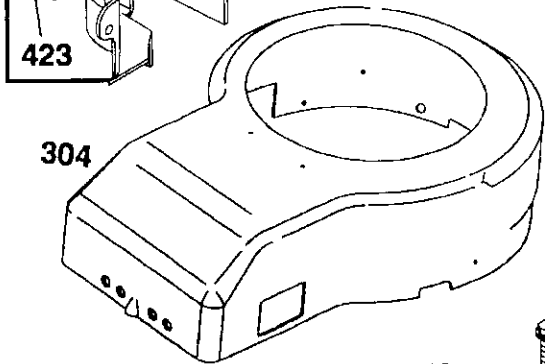
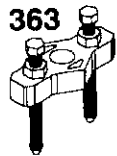
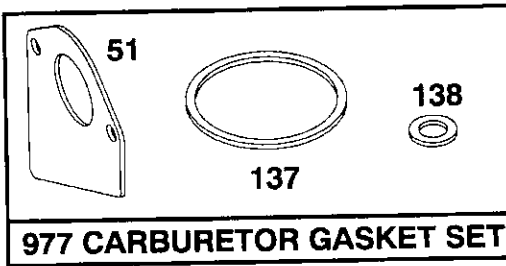
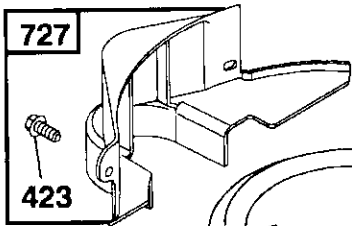
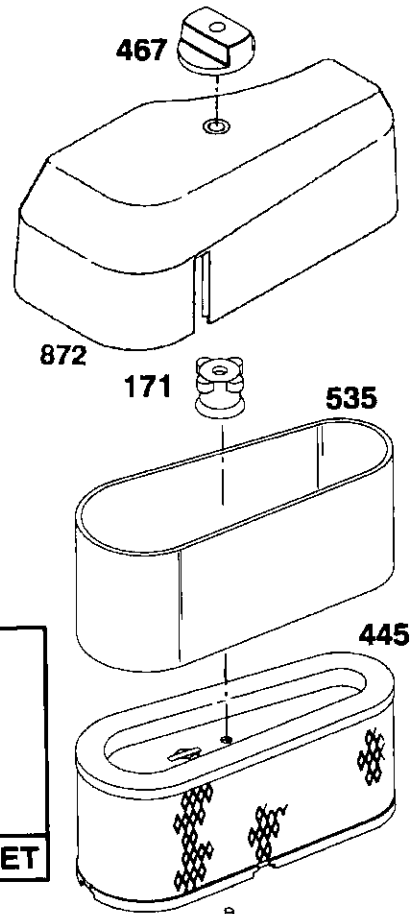
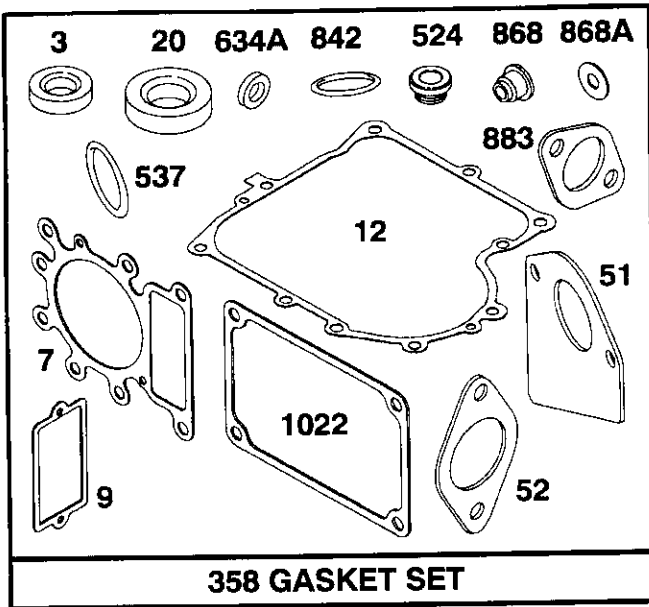
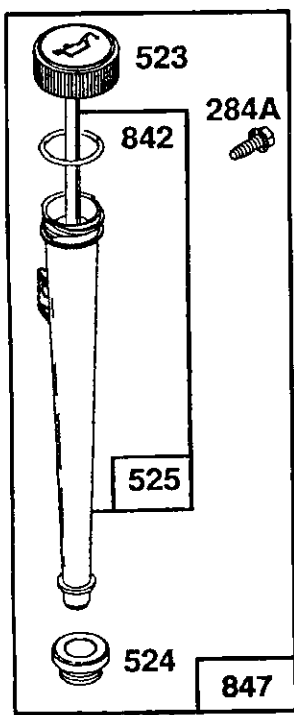


★ REQUIRES SPECIAL TOOLS TO INSTALL. SEE REPAIR INSTRUCTION MANUAL.

REPAIR PARTS

15 HP 42" TRACTOR - - MODEL NUMBER 917.257572

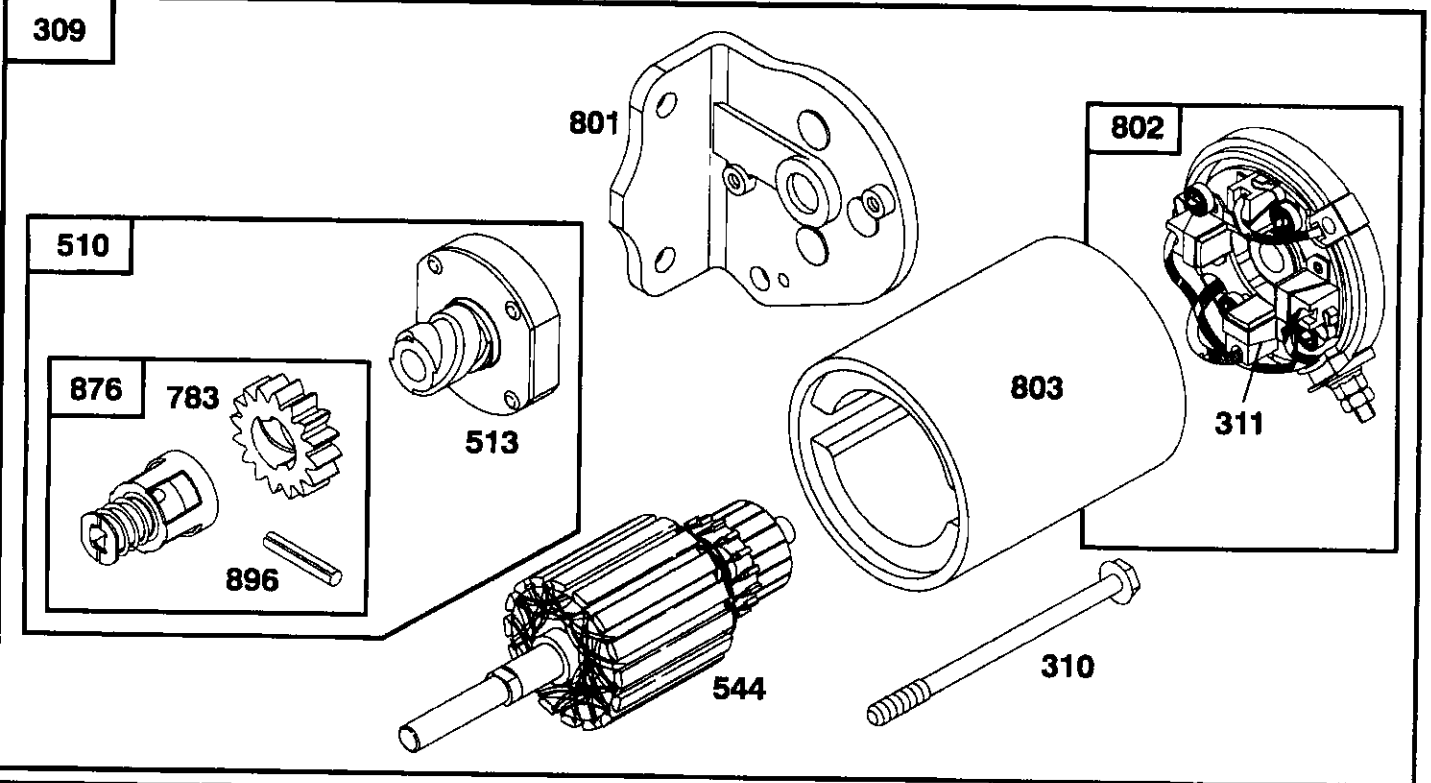
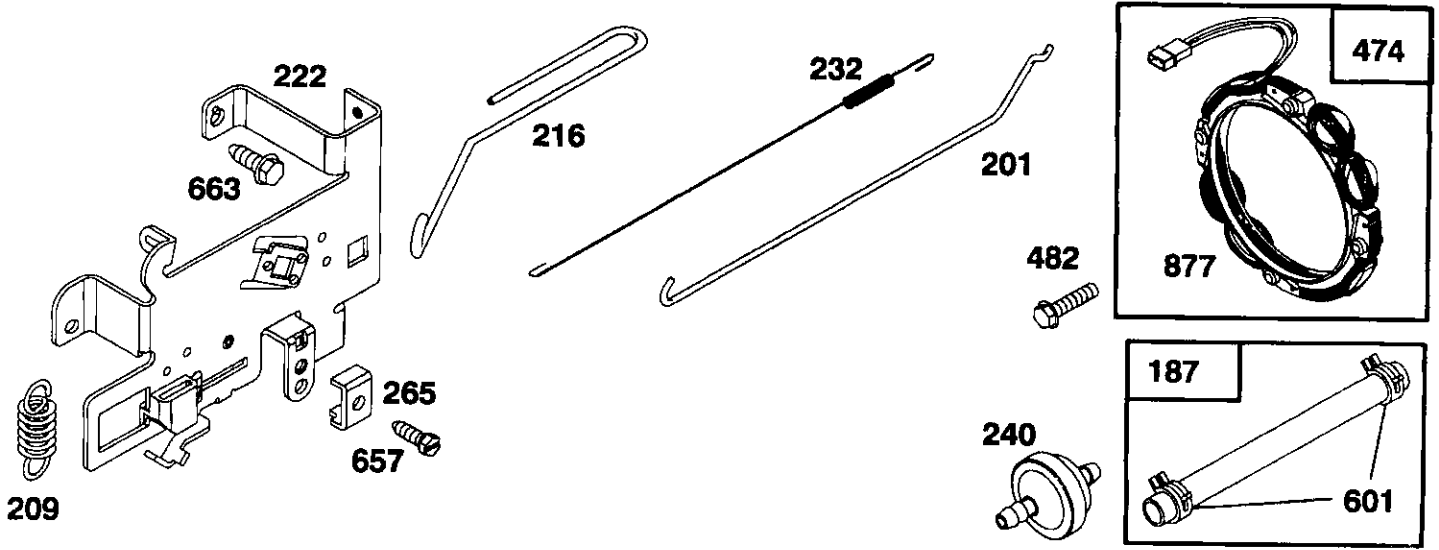
BRIGGS & STRATTON ENGINE - MODEL NUMBER 28N707, TYPE NUMBER 0121-01



REPAIR PARTS

15 HP 42" TRACTOR - - MODEL NUMBER 917.257572

BRIGGS & STRATTON ENGINE - MODEL NUMBER 28N707, TYPE NUMBER 0121-01



Reference Number		309	310	311	510	544	801	802	803
		Motor & Drive Assembly	Thru Bolt Assembly	Brush Assembly	Starter Drive Group	Armature Assembly	Drive End Cap Assembly	End Cap Assembly Commutator	Housing Assembly
Briggs & Stratton	Housing Length								
12V	3-21/32"	**394805	94003	395538	495878 *	390837	394856	395537 ***	398159



* Includes #398003 Clutch Assembly (Ref. No. 513) #280104 Gear (Ref. No. 783) #495877 Retainer and Pin (Ref. No. 876) #94288 Roll Pin (Ref. No. 896) ** Uses #94627 Screw-Hex. Head (Ref. No. 728) ***Includes Brush Set

REPAIR PARTS

15 HP 42" TRACTOR - - MODEL NUMBER 917.257572

BRIGGS & STRATTON ENGINE - MODEL NUMBER 28N707, TYPE NUMBER 0121-01

KEY PART NO. NO.

DESCRIPTION

51 272465

**** Gasket, Carburetor (Carburetor to Elbow) (Also Included in Gasket Set, Part Number 495993)

KEY PART NO. NO.

DESCRIPTION

52 272569

*** Gasket, Carburetor (Elbow to Cylinder) Stud, Carburetor Mounting

53 94637

Washer, Spring

75 224061

78 94626

95 94098

98 495800

104 231789

105 231855

106 231854

108 224540

117 231858

118 495932

121 495799

123 94616

125 495935

127 - - -

130 224539

131 494379

133 494381

137 281165

138 281164

141 495931

142 231859

147 231794

164 214053

166 94555

171 281051

187 393815

188 93535

192 492160

201 262767

209 260695

216 262766

219 490815

222 495611

224 94729

225 231058

*** Gasket, Carburetor (Elbow to Cylinder)

Stud, Carburetor Mounting

Washer, Spring

Screw, Sems

** Screw, Throttle

Screw, Idle Speed

** Pin, Float Hinge

** Valve Float

** Seat, Inlet Valve

Valve, Choke

** Jet, Needle Valve

Valve, Needle

Carburetor Overhaul Kit

Screw, Elbow Mounting

Carburetor Assembly

** Plug, Welch (Sold in Kit Only)

Valve, Throttle

Shaft and Lever, Throttle

Float, Carburetor

**** Gasket, Float Bowl

**** Washer, Bowl

Shaft and Lever, Choke

** Nozzle, Carburetor

** Pilot, Jet

Elbow, Carburetor

Stud, Rocker Arm

Nut, Air Cleaner Mounting

Line, Fuel (11" Long, Cut to Suit)

Screw, Hex Head, 3/4

Screw Assembly, Rocker Arm

Link, Governor

Spring, Governor

Link, Choke

Gear, Governor

Plate, Governor Control

Screw, Sems, Air Cleaner

Crank, Governor

* Included in Gasket Set (495993)

** Included in Carburetor Kit (495799)

*** Included in both Gasket Set (495993) and Valve Overhaul Kit (495992)

**** Included in Gasket Set (495993), Carburetor Kit (495799) and Carburetor Gasket Set (494385)

1	496412	Cylinder Assembly
2	399265	Bearing, Cylinder
3	391086	* Seal, Oil
5	495858	Head, Cylinder
7	272614	*** Gasket, Cylinder Head
8	495735	Breather Assembly
9	27803	* Gasket, Valve Cover
10	94621	Screw, Sems
11	281246	Tube, Breather
12	271916	* Gasket, Crankcase Cover, 1/64"
	271997	* Gasket, Crankcase Cover, .005"
	271996	* Gasket, Crankcase Cover, .009"
13	94728	Screw, Cylinder Head
15	94239	Plug, Oil Drain
16	495162	Crankshaft
	94196	Timing Gear Key
18	494238	Base, Engine
20	291675	* Seal, Oil
22	94624	Screw, Sems, Base Mounting
23	492326	Flywheel and Ring Gear Assembly, Magneto
24	222698	Key, Flywheel
25	495860	Piston Assembly, Standard Size
	495977	Piston Assembly, .010" Oversize
	495978	Piston Assembly, .020" Oversize
	495979	Piston Assembly, .030" Oversize
26	495854	Ring Set, Piston, Standard Size
	495852	Ring Set, Piston, .010" Oversize
	495851	Ring Set, Piston, .020" Oversize
	495855	Ring Set, Piston, .030" Oversize
27	260924	Lock, Piston Pin
28	299691	Pin Assy., Piston, Standard Size
	391286	Pin Assy., Piston, .005" Oversize
29	494504	Rod Assembly, Connecting
	495490	Rod Assembly, Connecting, .020" Undersize Crankpin Bore
32	94695	Screw, Hex Washer Head, 1-57/64
32A	94648	Screw, Hex Washer Head, 1-5/8
33	495856	Valve, Exhaust
34	495857	Valve, Intake
35	262811	Spring, Valve
37	224502	Guard, Flywheel
40	224641	Retainer, Valve Spring
45	262411	Tappet, Valve
46	494433	Gear, Cam

NOTE: All component dimensions given in U.S. inches
1 inch = 25.4 mm

REPAIR PARTS

15 HP 42" TRACTOR - - MODEL NUMBER 917.257572

BRIGGS & STRATTON ENGINE - MODEL NUMBER 28N707, TYPE NUMBER 0121-01

KEY PART NO. NO.	DESCRIPTION	NO. NO.	DESCRIPTION
227 493935	Lever Assembly, Governor	634 281168	** Seal, Choke Shaft
230 94742	Washer, Governor Crank	634A 491323	* Seal, Governor
232 262785	Spring, Governor Link	634B 281167	** Washer, Throttle Shaft
238 262836	Cap, Valve	635 280872	Elbow, Spark Plug
240 394358	Filter, Fuel (In Fuel Line)	646 224546	Brace, Air Cleaner
265 221535	Clamp, Casing	KEY PART	DESCRIPTION
284 94326	Screw, Hex Head	NO. NO.	
284A 94073	Screw, Hex Head	657 93496	Screw, Sems
294 810068	Screw, Set	668 280848	Spacer
304 496280	Housing, Blower	718 230192	Pin, Dowel
305 94513	Screw, Hex, Head,	726 392134	Gear, Ring
	Blower Housing Mounting		(Includes Mounting Hardware)
305A 94734	Screw, Hex Head,	727 490324	Cover, Starter
	Blower Housing Mounting	741 262932	Gear, Timing
306 224696	Shield, Cylinder	757 213998	Link, Counterweight
307 94623	Screw, Cylinder Shield	758 399891	Counterweight Assembly
333 495859	Armature, Magneto	759 298909	Pin, Counterweight
334 93381	Screw, Sems, Armature Mounting	761 94593	Screw, Counterweight
337 491055	Plug, Spark	842 270920	* Seal, Oil Filler Cap
346 93705	Screw, Hex Head	847 496415	Fill Group, Oil
356 496070	Wire Assembly	851 224110	Terminal, Ignition Cable
358 495993	Gasket Set	868 494435	*** Seal Assembly, Valve
363 19203	Puller, Flywheel	868A 272610	*** Gasket, Valve
383 89838	Wrench, Spark Plug	871 262835	Bushing, Guide (Intake & Exhaust)
423 94073	Screw, Sems	872 281361	Cover, Air Cleaner
445 493909	Cartridge, Air Cleaner	875 495862	Body, Air Cleaner
455 222561	Cup, Screen Mounting	877 393456	Diode and Connector Assembly
467 493903	Knob, Air Cleaner	947 495739	Solenoid
468 224948	Screen, Flush Rotating	965 94108	Nut, Hex
474 393474	Stator, Alternator	975 495933	Bowl Assembly, Carburetor
482 93621	Screw, Sems	977 494385	Carburetor Gasket Set
523 495230	Cap and Dipstick, Oil Filler	987 281166	** Seal, Throttle Shaft
524 68838	* Seal, Filler Tube	1005 281355	Fan, Flywheel
525 496113	Tube, Oil Filler	1006 224413	Retainer, Fan
535 272403	Element, Filter	1022 272475	*** Gasket, Cover
537 281106	* O-Ring, Air Cleaner	1023 224552	Cover, Rocker Arm
552 231597	Bushing, Governor Crank	1026 494432	Rod, Push, Intake
562 92613	Bolt, Governor Lever	495136	Rod, Push, Exhaust
592 231082	Nut, Hex	1029 224554	Arm, Rocker
601 93053	Clamp, Fuel Pipe	1033 495992	Valve Overhaul Kit
611 493496	Elbow, Fuel Pipe	1034 495248	Guide Assembly, Push Rod
614 93306	Pin, Cotter	1044 94673	Screw, Hex Head
615 93307	Retainer, E-Ring	1054 270723	Tie, Cable
618 262803	Spring, Choke Return		

RPM Settings: Low Speed: 1650-1850
High Speed: 3200-3400

- * Included in Gasket Set (495993)
- ** Included in Carburetor Kit (495799)
- *** Included in both Gasket Set (495993) and Valve Overhaul Kit (495992)
- **** Included in Gasket Set (495993), Carburetor Kit (495799) and Carburetor Gasket Set (494385)

NOTE: All component dimensions given in U.S. inches
1 inch = 25.4 mm

SERVICE NOTES
