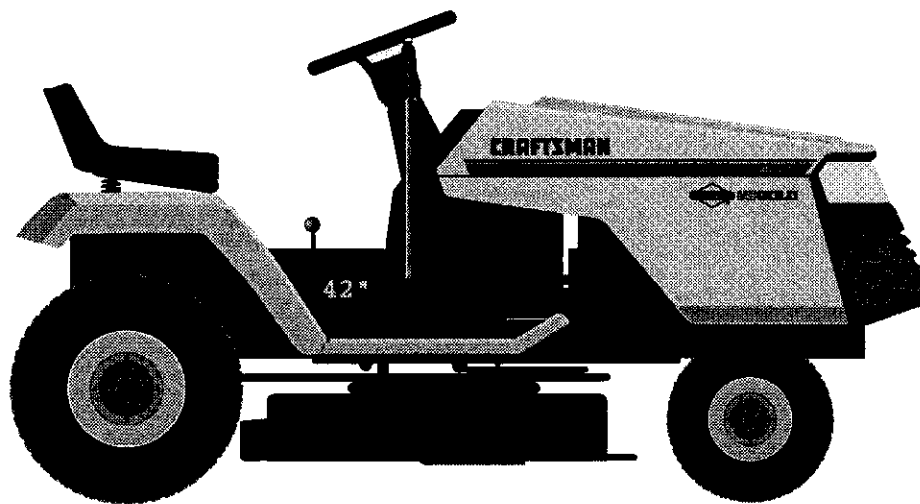


**SEARS**

# **CRAFTSMAN®**

**MODEL NUMBER 917.257573 OWNER'S MANUAL**

- **Assembly**
- **Operation**
- **Customer Responsibilities**
- **Service and Adjustments**
- **Repair Parts**



**CAUTION: Read and follow all safety rules and instructions before operating this equipment.**

---

---

---

---

Sears, Roebuck and Co., Hoffman Estates, IL 60179 U.S.A.



# SAFETY RULES

## Safe Operation Practices for Ride-On Mowers



**IMPORTANT:** THIS CUTTING MACHINE IS CAPABLE OF AMPUTATING HANDS AND FEET AND THROWING OBJECTS. FAILURE TO OBSERVE THE FOLLOWING SAFETY INSTRUCTIONS COULD RESULT IN SERIOUS INJURY OR DEATH.

### I. GENERAL OPERATION

- Read, understand, and follow all instructions in the manual and on the machine before starting.
- Only allow responsible adults, who are familiar with the instructions, to operate the machine.
- Clear the area of objects such as rocks, toys, wire, etc., which could be picked up and thrown by the blade.
- Be sure the area is clear of other people before mowing. Stop machine if anyone enters the area.
- Never carry passengers.
- Do not mow in reverse unless absolutely necessary. Always look down and behind before and while backing.
- Be aware of the mower discharge direction and do not point it at anyone. Do not operate the mower without either the entire grass catcher or the guard in place.
- Slow down before turning.
- Never leave a running machine unattended. Always turn off blades, set parking brake, stop engine, and remove keys before dismounting.
- Turn off blades when not mowing.
- Stop engine before removing grass catcher or unclogging chute.
- Mow only in daylight or good artificial light.
- Do not operate the machine while under the influence of alcohol or drugs.
- Watch for traffic when operating near or crossing roadways.
- Use extra care when loading or unloading the machine into a trailer or truck.

### II. SLOPE OPERATION

Slopes are a major factor related to loss-of-control and tipover accidents, which can result in severe injury or death. All slopes require extra caution. If you cannot back up the slope or if you feel uneasy on it, do not mow it.

#### DO:

- Mow up and down slopes, not across.
- Remove obstacles such as rocks, tree limbs, etc.
- Watch for holes, ruts, or bumps. Uneven terrain could overturn the machine. *Tall grass can hide obstacles.*
- Use slow speed. Choose a low gear so that you will not have to stop or shift while on the slope.
- Follow the manufacturer's recommendations for wheel weights or counterweights to improve stability.
- Use extra care with grass catchers or other attachments. These can change the stability of the machine.
- Keep all movement on the slopes *slow* and *gradual*. Do not make sudden changes in speed or direction.
- Avoid starting or stopping on a slope. If tires lose traction, disengage the blades and proceed slowly *straight* down the slope.

#### DO NOT:

- *Do not* turn on slopes unless necessary, and then, turn slowly and gradually downhill, if possible.
- *Do not* mow near drop-offs, ditches, or embankments. The mower could suddenly turn over if a wheel is over the edge of a cliff or ditch, or if an edge caves in.
- *Do not* mow on wet grass. Reduced traction could cause sliding.
- *Do not* try to stabilize the machine by putting your foot on the ground.
- *Do not* use grass catcher on steep slopes.

### III. CHILDREN

Tragic accidents can occur if the operator is not alert to the presence of children. Children are often attracted to the machine and the mowing activity. *Never* assume that children will remain where you last saw them.

- Keep children out of the mowing area and under the watchful care of another responsible adult.
- Be alert and turn machine off if children enter the area.
- Before and when backing, look behind and *down* for small children.
- Never carry children. They may fall off and be seriously injured or interfere with safe machine operation.
- Never allow children to operate the machine.
- Use extra care when approaching blind corners, shrubs, trees, or other objects that may obscure vision.

### IV. SERVICE

- Use extra care in handling gasoline and other fuels. They are flammable and vapors are explosive.
  - Use only an approved container.
  - Never remove gas cap or add fuel with the engine running. Allow engine to cool before refueling. Do not smoke.
  - Never refuel the machine indoors.
  - Never store the machine or fuel container inside where there is an open flame, such as a water heater.
- Never run a machine inside a closed area.
- Keep nuts and bolts, especially blade attachment bolts, tight and keep equipment in good condition.
- Never tamper with safety devices. Check their proper operation regularly.
- Keep machine free of grass, leaves, or other debris build-up. Clean oil or fuel spillage. Allow machine to cool before storing.
- Stop and inspect the equipment if you strike an object. Repair, if necessary, before restarting.
- Never make adjustments or repairs with the engine running.
- Grass catcher components are subject to wear, damage, and deterioration, which could expose moving parts or allow objects to be thrown. Frequently check components and replace with manufacturer's recommended parts, when necessary.
- Mower blades are sharp and can cut. Wrap the blade(s) or wear gloves, and use extra caution when servicing them.
- Check brake operation frequently. Adjust and service as required.



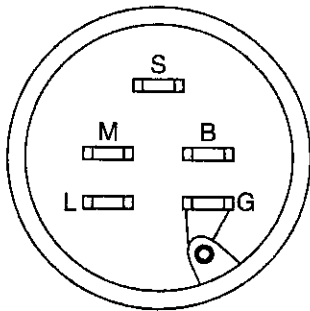
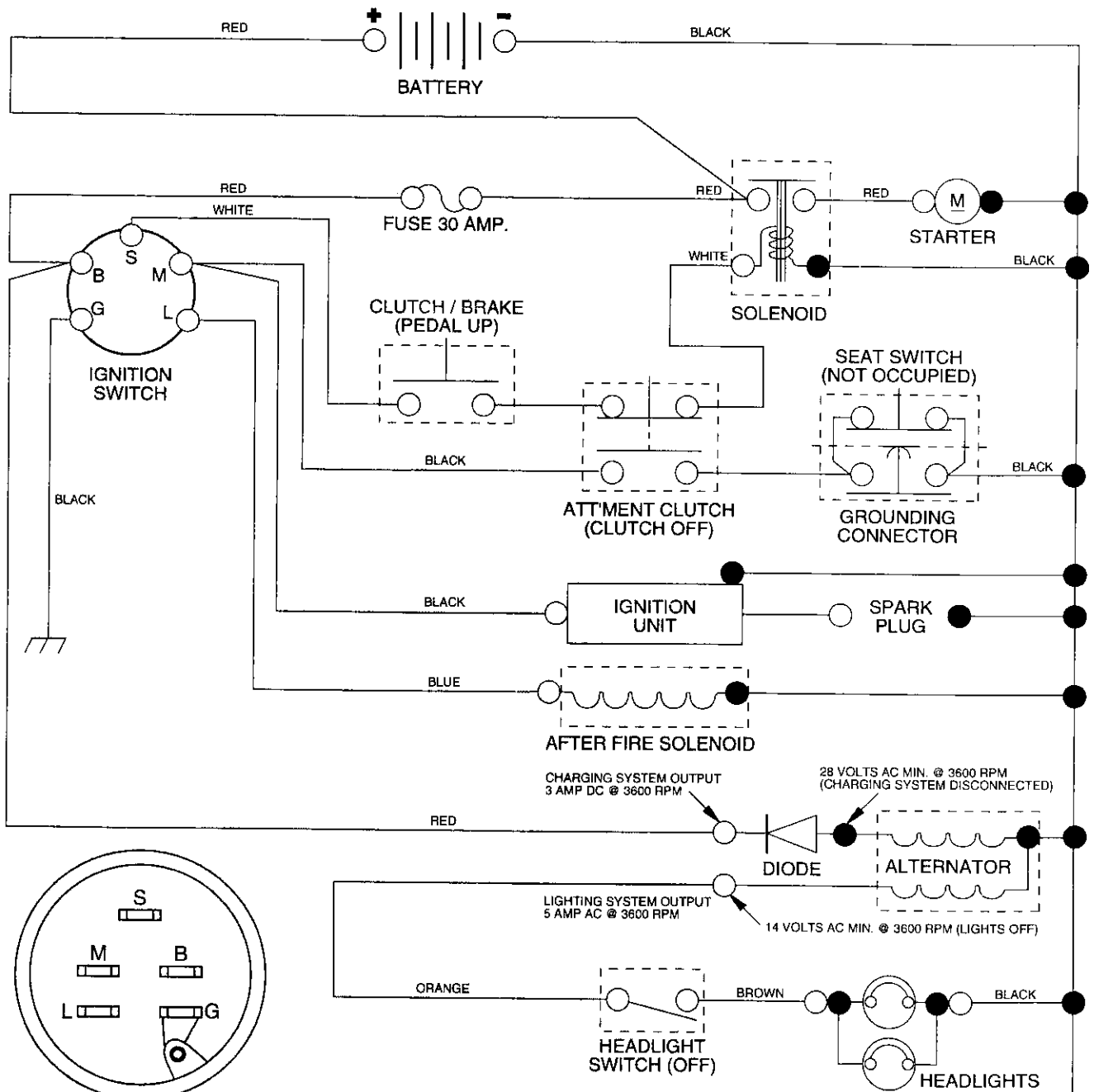
**Look for this symbol to point out important safety precautions. It means CAUTION!!! BECOME ALERT!!! YOUR SAFETY IS INVOLVED.**



**CAUTION: Always disconnect spark plug wire and place wire where it cannot contact spark plug in order to prevent accidental starting when setting up, transporting, adjusting or making repairs.**

# 15 HP 42" TRACTOR - - MODEL NUMBER 917.257573

## SCHEMATIC



**IGNITION SWITCH**

POSITION	CIRCUIT
OFF	M + G
ON	B + L
START	B + S + .

### WIRING INSULATED CLIPS

**NOTE:** IF WIRING INSULATED CLIPS WERE REMOVED FOR SERVICING OF UNIT, THEY SHOULD BE REPLACED TO PROPERLY SECURE YOUR WIRING

### NOTE

YOUR TRACTOR IS EQUIPPED WITH A SPECIAL ALTERNATOR SYSTEM. THE LIGHTS ARE NOT CONNECTED TO THE BATTERY, BUT HAVE THEIR OWN ELECTRICAL SOURCE. BECAUSE OF THIS, THE BRIGHTNESS OF THE LIGHTS WILL CHANGE WITH ENGINE SPEED. AT IDLE THE LIGHTS WILL DIM. AS THE ENGINE IS SPEEDED UP, THE LIGHTS WILL BECOME THEIR BRIGHTEST.

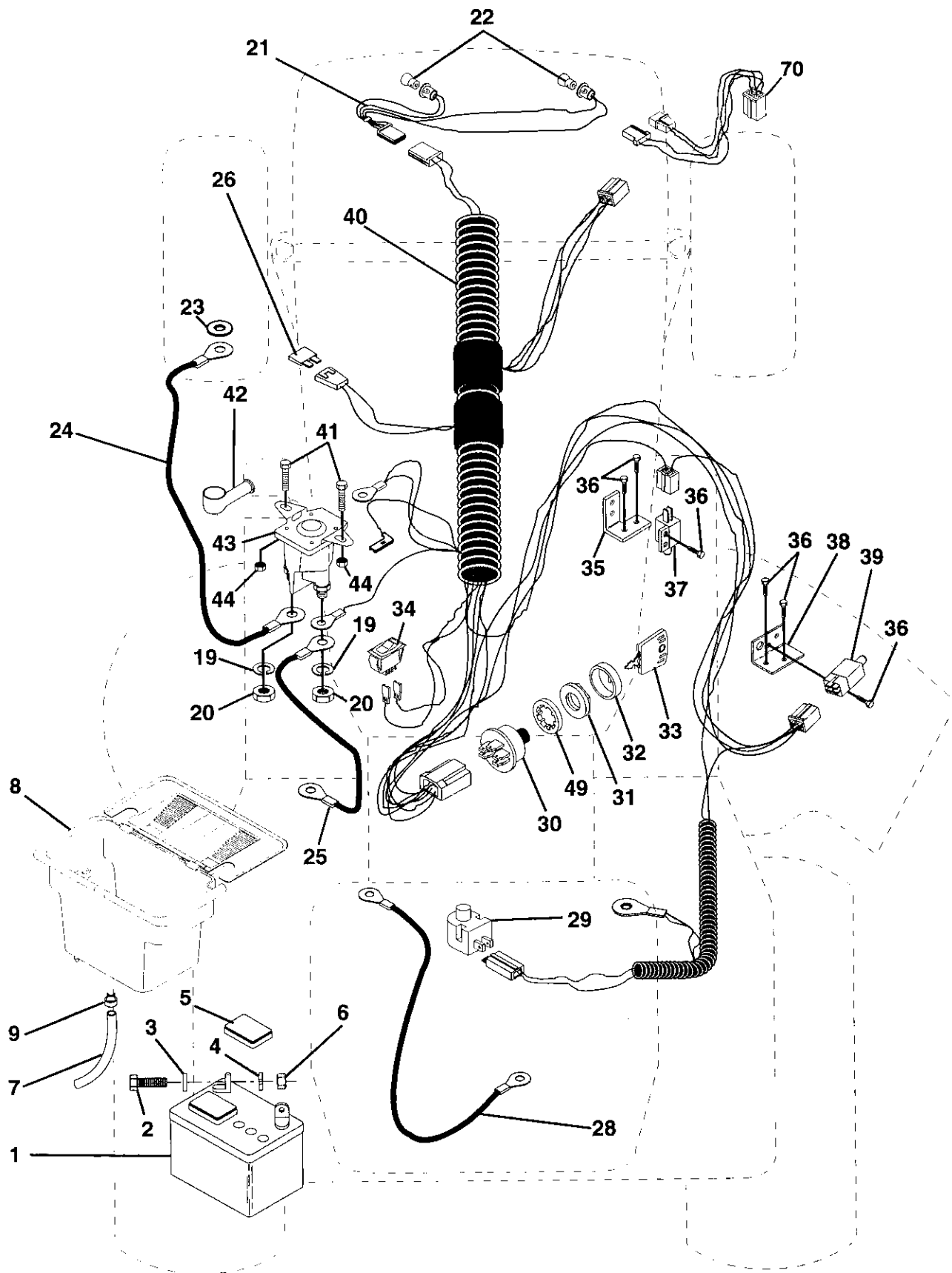
● NON-REMOVABLE CONNECTIONS

○ REMOVABLE CONNECTIONS

# REPAIR PARTS

15 HP 42" TRACTOR - - MODEL NUMBER 917.257573

## ELECTRICAL



# REPAIR PARTS

## 15 HP 42" TRACTOR - - MODEL NUMBER 917.257573

### ELECTRICAL

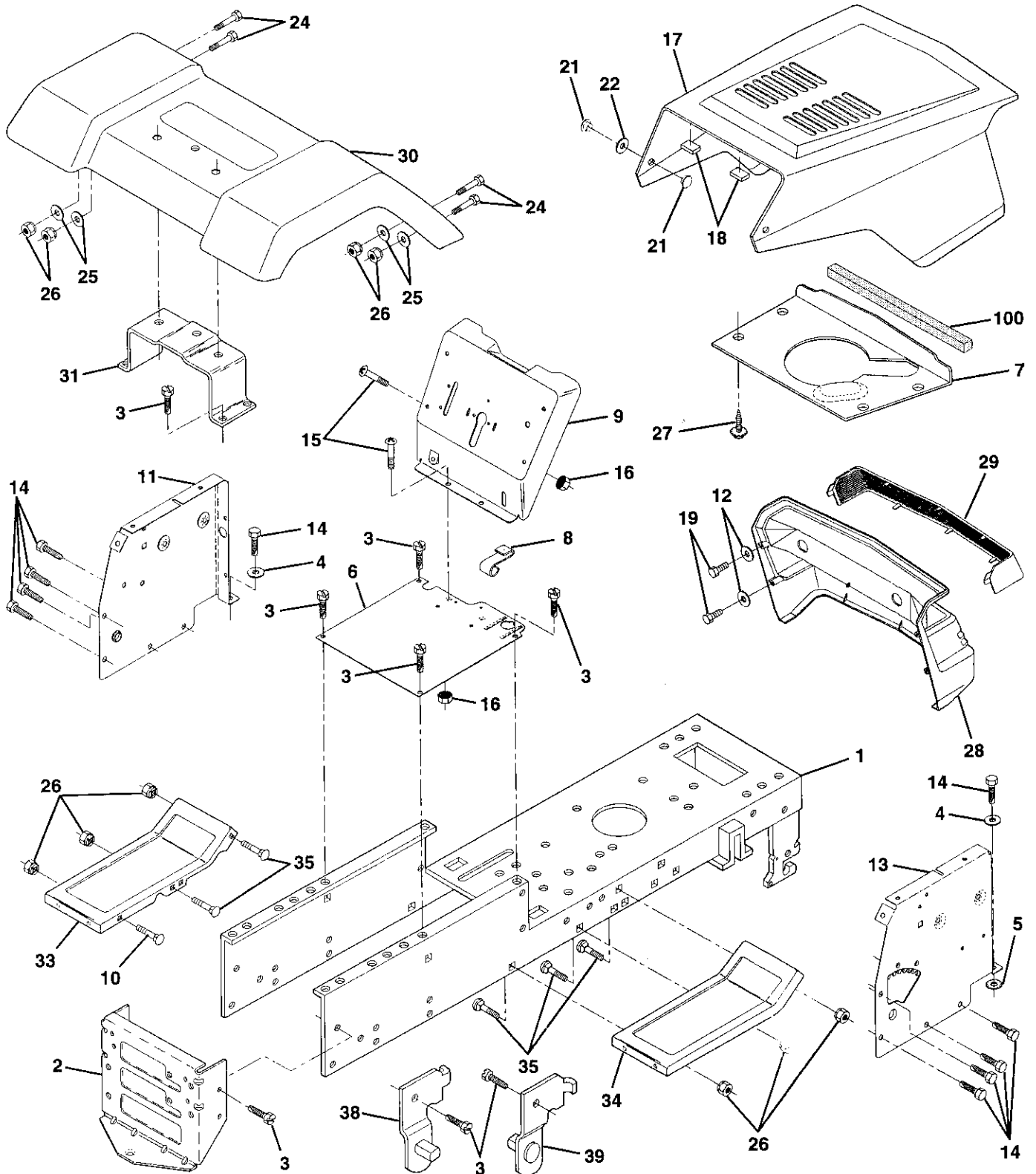
KEY NO.	PART NO.	DESCRIPTION
1	121265X	Battery 12 VOLT 25 AMP
2	74760412	Bolt Hex Hd 1/4-20unc X 3/4
3	19091016	Washer 9/32 X 5/8 X 16 Ga
4	10040400	Washer Lock Hvy Helical 1/4
5	121264X	Caps Battery 20/25/30 AMP
6	73220400	Nut Fin Hex 1/4-20 Unc
7	109238X	Tube Plastic 12"
8	129965	Case Battery Hng Mech W/lid
9	109596X	Clamp Hose Olive
19	10090400	Washer Lock 1/4
20	73350400	Nut Jam Hex 1/4-20 Unc
21	136850	Harness Asm Light W/4152j
22	4152J	Bulb Light #1156
23	11150400	Washer Lock Internal Tooth 1/4
24	4799J	Cable Battery 6 Ga 11" red
25	132202	Cable Battery 6 Ga 43" red
26	108824X	Fuse 30 AMP Auto Green
28	4207J	Cable Ground 6 Ga 12" black
29	121305X	Switch Plunger Nc Gray
30	144921	Switch Ign 3 pos
31	140400	Nut Ignition
32	141226	Cover Sw Key Blk 1 25 Text SLT
33	140403	Key Ign Molded Craftsman
34	110712X	Switch Light Blk Blk Red
35	108236X	Bracket Switch Clutch
36	17021008	Screw Tap Hex #10-24unc X 1/2
37	104445X	Switch Intlk Clutch Red 2 Term
38	140336	Bracket Switch Interlock
39	109553X	Switch Intlk Clutch Red 4 Term
40	140414	Harness Ign Bs Dash Headlights
41	71110408	Bolt Blk. Fin Hex 1/4-20 Unc x 1/2
42	131563	Cover Terminal Red
43	138406	Solenoid
44	73640400	Nut Keps Hex 1/4-20 Unc
49	11151000	Washer, Lock, Internal Tooth 5/8
70	140422	Harness Engine B&S 14 OHV

**NOTE:** All component dimensions give in U.S. inches  
1 inch = 25.4 mm

# REPAIR PARTS

15 HP 42" TRACTOR - - MODEL NUMBER 917.257573

## CHASSIS AND ENCLOSURES



# REPAIR PARTS

## 15 HP 42" TRACTOR - - MODEL NUMBER 917.257573

### CHASSIS AND ENCLOSURES

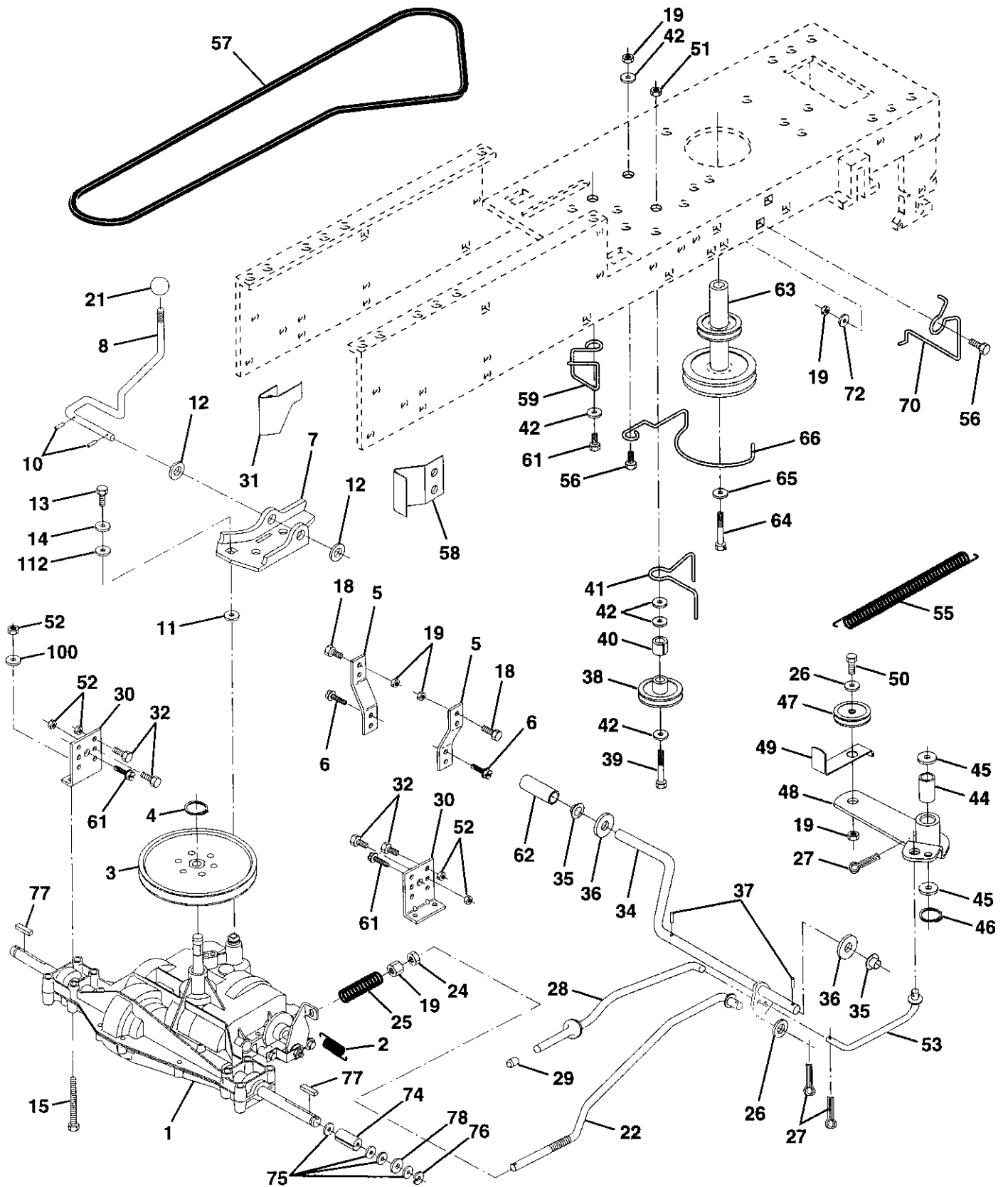
KEY NO.	PART NO.	DESCRIPTION
1	140341	Chassis Weldment 12ga 38/42
2	140356	Drawbar Stretch
3	17490612	Screw Thdrol 3/8-16x3/4 Ty-tt
4	STD551025	Washer 13/32 x 3/4 x 16 Ga.
5	11050600	Washer, Lock Ext. Tooth 3/8
6	140290X016	Saddle Silkscreen 6sp Sym S/S NONS
7	126842X	Shield Ht. Hood Kohl/Dia Engine
8	126471X	Clip Insulator .406 Mtg Hole
9	140637X013	Dash Silkscreened Sears Eng/Sy
10	STD533710	Bolt Carriage 3/8-16 x 1
11	135464	Panel Pnt Dash Lh
12	11030400	Washer Lock 1/4 Int/Ext Tooth
13	124031X012	Panel Silkscr Dash Rh Weldment
14	17490608	Screw Thdrol 3/8-16x1/2 Ty-tt
15	74180512	Screw Mach Trhd 5/16-18uncx3/4
16	STD541431	Nut Keps 5/16-18 Unc
17	131445X417	Hood Asm Pnt Weld Silver Powde
18	126938X	Bumper Hood
19	17521312	Screw Sltd Hex Hd w/PI Washer
21	122933X	Rivet Ratchet Nylon
22	124479X	Washer Nylon Blk 28x 75x 19
24	STD523710	Bolt Fin Hex 3/8-16unc X 1
25	19131312	Washer 13/32 X 13/16 x 12 Ga
26	STD541437	Nut Lock 3/8-16 Unc
27	17030808	Screw Spiderloc Hex Hd #8 x 1/2 AB
28	140135	Grille Grey
29	124029X	Lens Headlight Bar Clear
30	109872X417	Fender Pnt
31	136619	Bracket Pnt Fender
33	105465X417	Footrest Pnt Lh Perf (silver)
34	105464X417	Footrest Pnt Rh Perf (silver)
35	STD533707	Bolt Rdhd Sht Sqnk 3/8-16 X3/4
38	139886	Bracket, Asm. Pivot, L.H., Mower Rear
39	139887	Bracket, Asm. Pivot, R.H., Mower Rear
100	105037X	Strip Foam 18"
--	5479J	Plug Button Blk 359 Dia

**NOTE:** All component dimensions given in U.S. inches  
1 inch = 25.4 mm

# REPAIR PARTS

15 HP 42" TRACTOR -- MODEL NUMBER 917.257573

## DRIVE





# REPAIR PARTS

## 15 HP 42" TRACTOR - - MODEL NUMBER 917.257573

### DRIVE

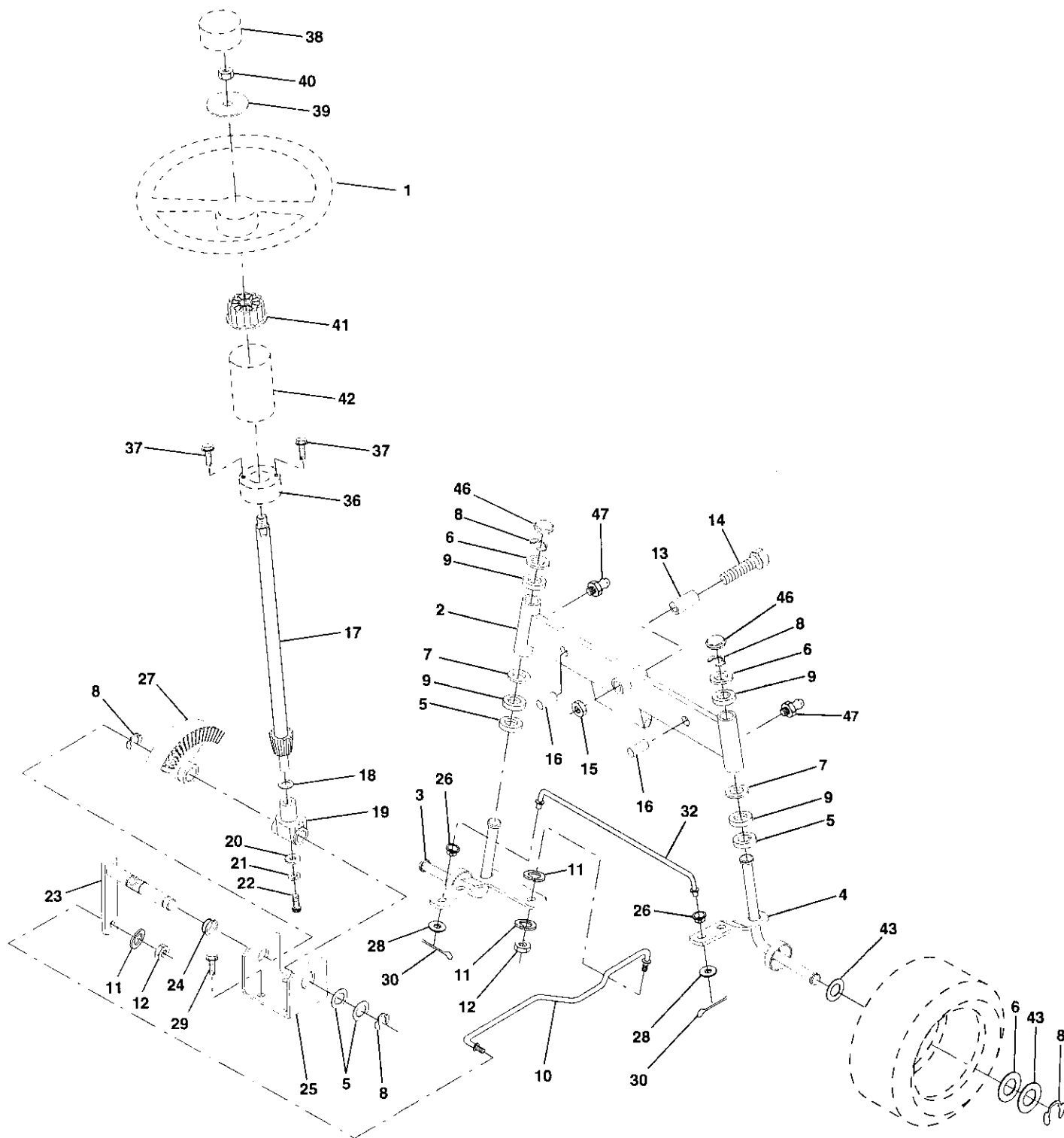
KEY NO.	PART NO.	DESCRIPTION	KEY NO.	PART NO.	DESCRIPTION
1	142603	Transaxle 6sp Std Dana, Model No. 4360-79	41	109070X	Keeper Belt Retainer
2	110422X	Spring Return Brake T/a Zinc	42	19131312	Washer 13/32 X 13/16 X 12 Ga
3	123666X	Pulley Transaxle Alum	44	105706X	Bearing Nyl 503 X 628 X 1 25
4	12000028	Ring Retainer # 5100-62	45	110812X	Washer Hardened
5	121520X	Strap Pnt Torque 30 Deg Blk	46	12000039	Ring Klip #t5304-50
6	17490512	Screw Thdrol 5/16-18 X 3/4 Tyt	47	127783	Pulley Idler V Groove Plastic
7	130802	Plate Pnt Rod Shift T/a (blk )	48	123789X	Bellcrank Asm
8	131679	Rod Shifter Blk (dana)	49	123205X	Retainer Belt Style Spring
10	STD561210	Pin Cotter 1/8 X 1 Cad	50	STD523715	Bolt Hex Hd 3/8-16unc X 1-1/2
11	105701X	Washer Plate Shf 388 Sq Hole	51	STD541437	Nut Crownlock 3/8-16 Unc
12	19151216	Washer 15/32 X 3/4 X 16ga	52	STD541431	Nut Crown Lock 5/16-18
13	74550412	Bolt 1/4-28unf Gr w/Patch	53	105710X	Link Clutch 7 66
14	STD551125	Washer Lock Hvy Helical 1/4	55	105709X	Spring Return Clutch 6 75
15	74780544	Bolt Fin Hex 5/16-18unc X 2-3/4	56	74760620	Bolt Fin Hex 3/8-16unc x 1-1/4
18	STD523710	Bolt Fin Hex 3/8-16unc X 1	57	130801	V-belt Ground Drive 95.25
19	STD541437	Nut Lock 3/8-16 Unc	58	127274X	Keeper Belt Rh Lt Pnt/zinc 16g
20	17490512	Screw Thdrol 5/16-18 X 3/4 Tyt	59	140312	Retainer Belt Chassis Lh Zinc
21	106933X	Knob Rd 1/2-13 Plstc Thds Blk	61	17490612	Screw Thdrol 3/8-16x3/4 Ty-tt
22	130804	Rod Brake Lt	62	8883R	Cover Pedal Blk Std
24	STD541237	Nut Hex Jam 3/8-16 Unc	63	140186	Pulley Engine
25	106888X	Spring Rod Brake 2 00 Zinc	64	71170764	Bolt Finhex 7/16-20 x 4 g5
26	STD551037	Washer 13/32 X 13/16 X 16 Ga	65	STD551143	Washer Lock Hvy Hicl Spr 7/16
27	STD561210	Pin Cotter 1/8 X 3/4 Cad	66	129921	Keeper Belt Engine Lh Lt
28	140448	Rod Brake Parking Lt	70	134683	Guide Belt Dr Mower Rh
29	124236X	Cap Parking Brake Red	72	19132012	Washer 13/32 X 1-1/4 X 12 Ga
30	130807	Bracket Transmission	74	109502X	Spacer Split .80x1.94
31	127275X	Keeper Belt Lh Lt 14 Ga	75	121749X	Washer 25/32 X 1 1/4 X 16 Ga
32	STD523707	Bolt Fin Hex 3/8-16unc X 3/4	76	STD581075	Ring E #5133-75
34	122424X	Shaft Asm Pedal Foot 1 930	77	123583X	Key Square 2 0 X 1845/ 1865
35	120183X	Bearing Nylon Blk 629 Id	78	121748X	Washer 25/32 X 1 5/8 X 16ga
36	STD551062	Washer 21/32 X 1 X 16 Ga	100	19111216	Washer 11/32 x 3/4 x 16 Ga.
37	STD571810	Pin Roll 3/16 X 1"	112	19091210	Washer 9/32 X 3/4 X 10 Ga
38	123674X	Pulley Idler Flat			
39	STD523727	Bolt Fin Hex 3/8-16unc X 2-3/4			
40	4470J	Spacer Split 395 X 59 Bzp			

**NOTE:** All component dimensions given in U.S. inches  
1 inch = 25.4 mm

# REPAIR PARTS

15 HP 42" TRACTOR - - MODEL NUMBER 917.257573

## STEERING ASSEMBLY



# REPAIR PARTS

15 HP 42" TRACTOR - - MODEL NUMBER 917.257573

## STEERING ASSEMBLY

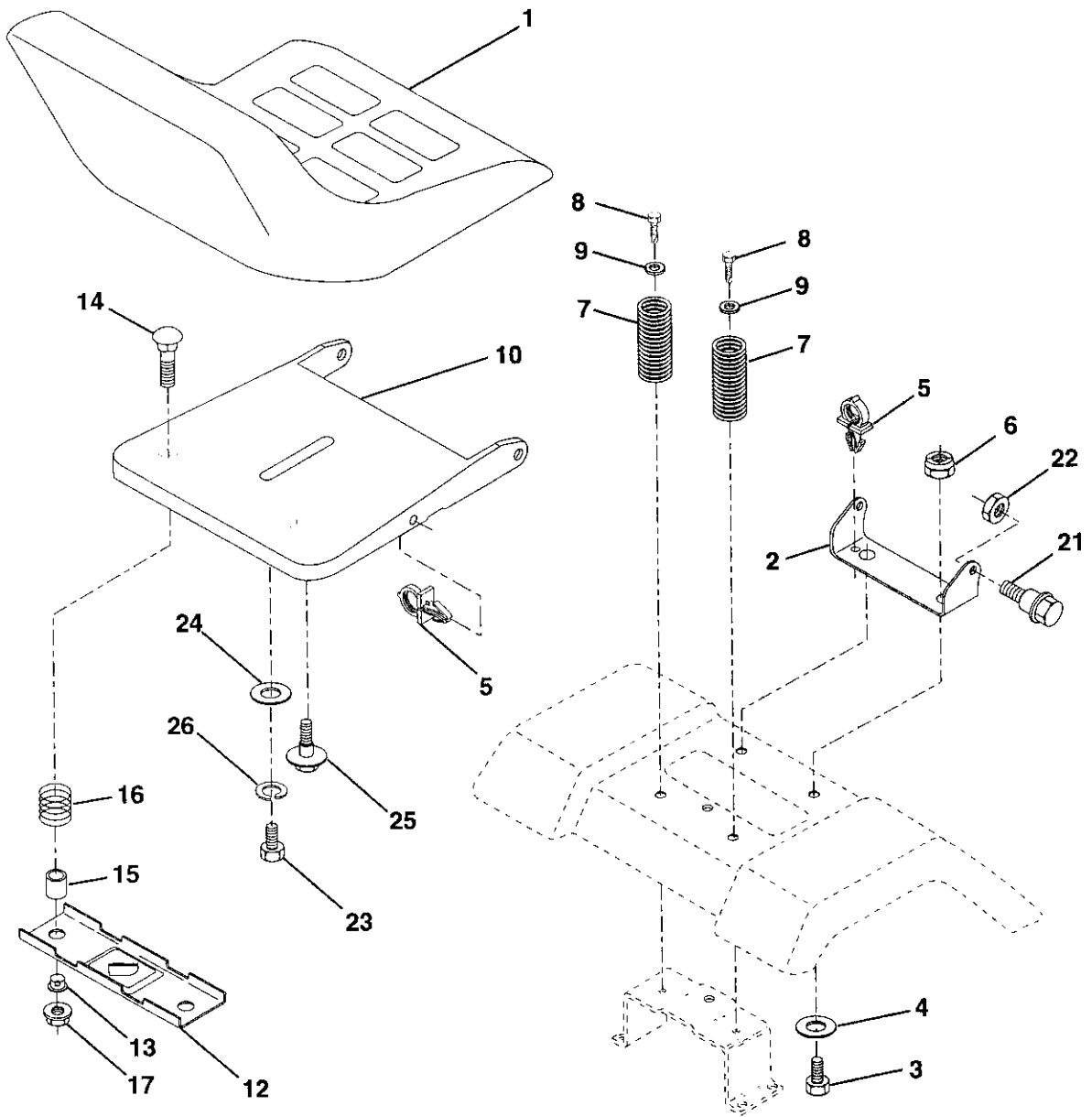
KEY NO.	PART NO.	DESCRIPTION
1	139768	Wheel Steering Std Black
2	142033	Axle Asm Front
3	135227	Spindle Asm Lh
4	135228	Spindle Asm Rh
5	6266H	Bearing Race Thrust Harden
6	121748X	Washer 25/32 X 1 5/8 X 16ga
7	19272016	Washer 27/32 X 1 1/4 X 16 Ga
8	12000029	Ring Klip #t5304-75
9	3366R	Bearing Col Strg Blk
10	130468	Link Drag Sol Ball Jt 20 064
11	STD551137	Washer Lock Hvy Hlcl Spr 3/8
12	73610600	Nut Fin Hex 3/8-24 Unf
13	110438X	Spacer Bearing Axle Front
14	74011056	Bolt Hex 5/8-11 Unc X 3-1/2
15	73901000	Locknut Flange 5/8-11 Unc
16	132624	Pin Axle 5/8 X 1 55/1 54 Lg
17	132614	Shaft Asm Strg 5/8 X 15 19 Lt
18	57079	Washer Thrust 515x 750x 033
19	124035X	Support Shaft
20	126684X	Washer Shim 1/4 X 5/8 X 062
21	STD551125	Washer Lock Hvy Helical 1/4
22	71070410	Screw Hex Socket 1/4-20 X 5/8
23	127501	Shaft Asm Pittman
24	109816X	Nyliner Snap In
25	124036X	Bracket Steering
26	126847X	Bushing Rod Tie Blk Lt
27	136874	Gear Sector
28	19131416	Washer 13/32 X 7/8 X 16ga
29	17490612	Screw Thdrol 3/8-16x3/4 Ty-tt
30	STD561210	Pin Cotter 1/8 X 3/4 Cad
32	130465	Rod Tie Wire Form 19 75 Mech
36	132196	Bushing Strg 5/8 Id Dash
37	STD611005	Screw Slftp #10-16 X 1/2 Ty-b
38	139769	Insert Cap Strg Wheel Std Blk
39	19133808	Washer 13/32 X 2-3/8 X 8 Ga
40	STD541537	Nut Lock Center 3/8-24unf
41	104820X	Adaptor Wheel Strg 640/ 635id
42	124417X	Boot Shaft Steering
43	121749X	Washer 25/32 X 1 1/4 X 16 Ga
46	121232X	Cap Spindle Fr Top Blk
47	6855M	Fitting Grease

**NOTE:** All component dimensions given in U.S. inches  
1 inch = 25.4 mm

# REPAIR PARTS

15 HP 42" TRACTOR - - MODEL NUMBER 917.257573

## SEAT ASSEMBLY



KEY NO.	PART NO.	DESCRIPTION
1	127437	Seat V350 Blk/blk Craftsman
2	140551	Bracket Pnt Pivot Seat (blk )
3	STD523710	Bolt Fin Hex 3/8-16unc X 1
4	19131610	Washer 13/32 X 3/4 X 10 Ga
5	145006	Clip Push In
6	STD541437	Nut Lock Hex W/Ins 3/8-16 Unc
7	124181X	Spring Seat Cprsn 2 250 Blk Zi
8	17490616	Screw Thdrol 3/8-16 X 1 Ty-tt
9	19131614	Washer 13/32 X 1 X 14 Ga
10	140552	Pan Pnt Seat (blk )
12	121246X	Bracket Pnt Mounting Switch
13	121248X	Bushing Snap Blk Nyl 50 Id

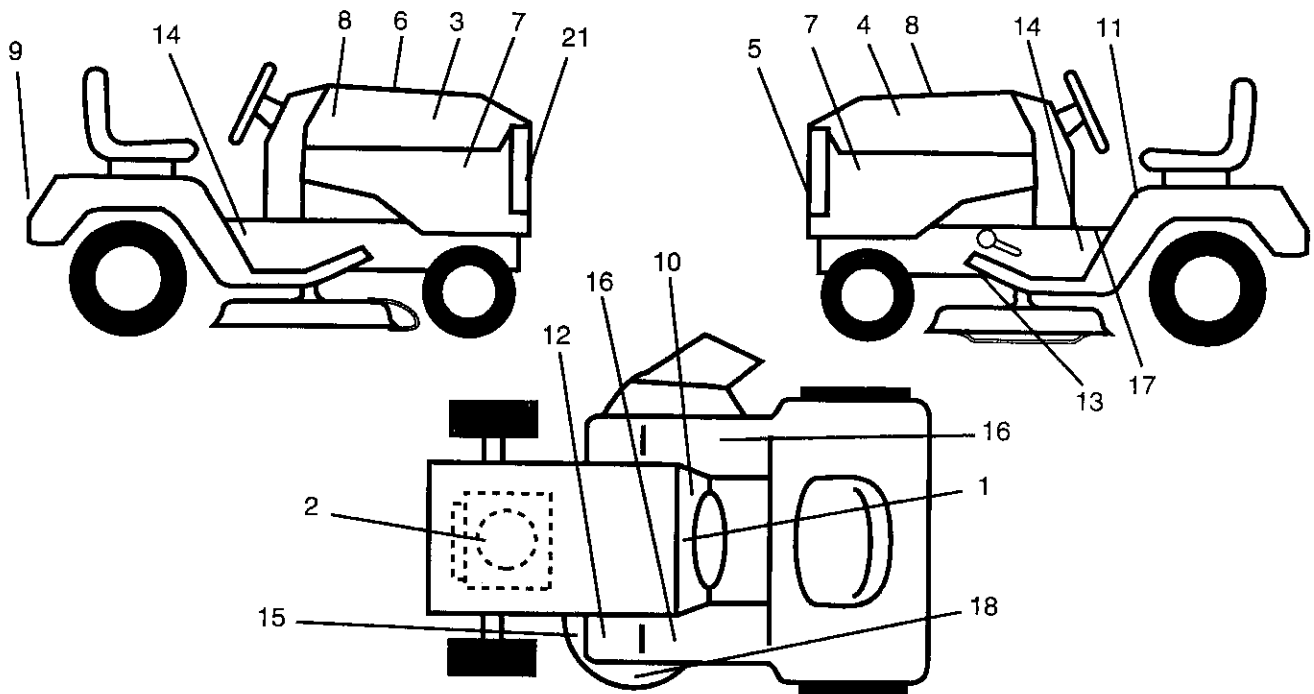
KEY NO.	PART NO.	DESCRIPTION
14	72050411	Bolt Rdhd Sht Nk 1/4-20x1-3/8
15	134300	Spacer Split 28 X 96 Zinc
16	121250X	Spring Cprsn 1 27 Blk Pnt
17	123976X	Nut Lock 1/4 Lge Flg Gr 5 Zinc
21	139888	Bolt Shoulder 5/16-18 Unc Blkz
22	STD541431	Nut Lock Hex W/Ins 5/16-18
23	74780814	Bolt Fin Hex 1/2-13 X 7/8 Gr 5
24	19171912	Washer 17/32 X 1-3/16 X 12 Ga
25	127018X	Bolt Shoulder 5/16-18 X 62
26	STD551150	Washer Lock Hvy Hlcl Spr 1/2

**NOTE:** All component dimensions given in U.S. inches.  
1 inch = 25.4 mm

# REPAIR PARTS

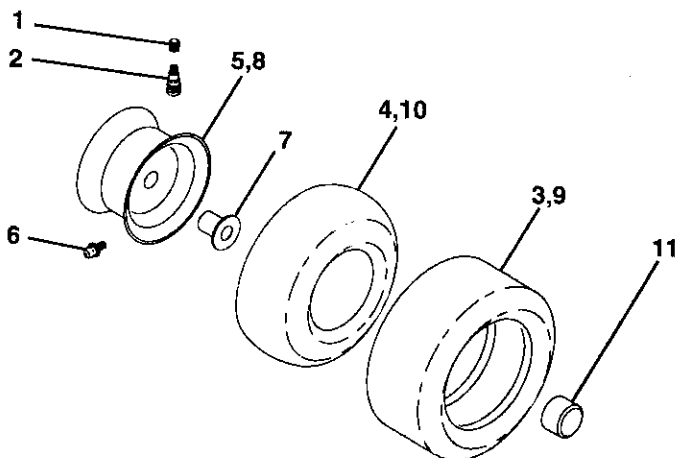
## 15 HP 42" TRACTOR -- MODEL NUMBER 917.257573

### DECALS



KEY NO.	PART NO.	DESCRIPTION	KEY NO.	PART NO.	DESCRIPTION
1	138955	Decal Instruction Operat Eng	12	4900J	Decal Clutch/brake English
2	142239	Decal B&S Diamond IC/Gold OHV	13	109199X	Decal V-belt Dr Sch Tractor E
3	140560	Decal Hood Slope Rh Craftsman	14	131473	Decal Chassis 6 Sp 42"
4	140561	Decal Hood Slope Lh Craftsman	15	136832	Decal Mower Drive Schematic
5	132674	Decal Grille Lt4000 Craft Usa	16	105466X	Decal, Pad Footrest Rbr Sq Craftsman
6	133644	Decal Maint Customer Sears Dom	17	140837	Decal Saddle Parking Brake
7	142248	Decal Panel Side l/c Gold/blk	18	133179	Decal Mower Qc System
8	142247	Decal Insert Hood 15 Hp OHV Blk	21	131265	Decal Lightbox
9	125880X	Decal Fender Craftsman Red	--	138311	Decal Lift Handle
10	138836	Decal Dash Slope Lt	--	145862	Manual, Owner's (English)
11	137537	Decal Caution English/Spanis	--	145863	Manual, Owner's (Spanish)

### WHEELS & TIRES



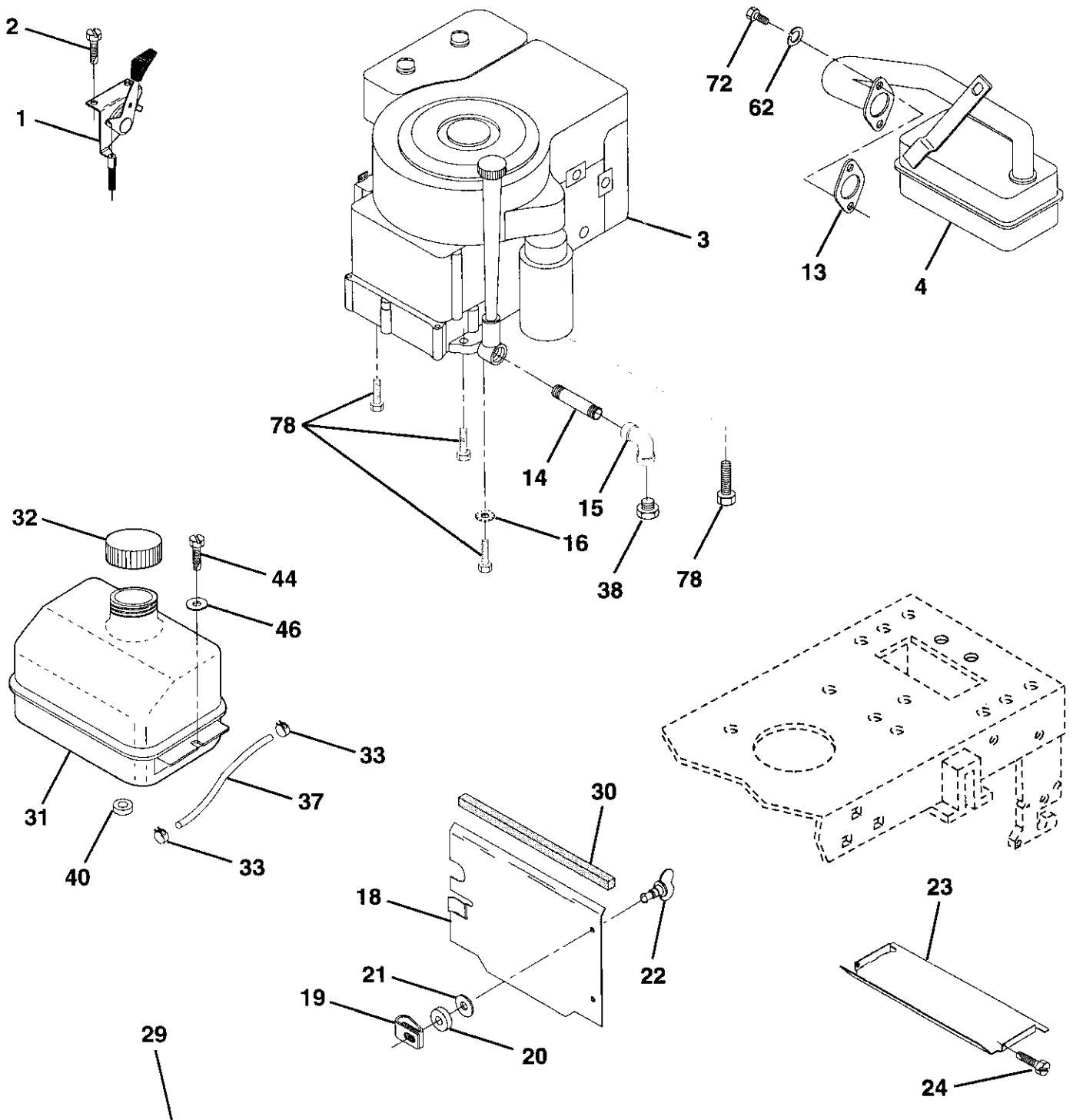
KEY NO.	PART NO.	DESCRIPTION
1	59192	Cap Value Tire
2	65139	Stem Value
3	106222X	Tire F Ts 15 X 6 0 - 6 Service
4	59904	Tube Inner Front #35060
5	106732X417	Rim Asm 6"front Silver Service
6	278H	Fitting Grease
7	9040H	Bearing Flange
8	106108X417	Rim Asm 8"rear Silver Service
9	106268X	Tire R Ts 18x9 5-8 Service
10	7152J	Tube Rear 9 5 X 8 Service
11	104757X	Cap Axle Blk 1 50 X 1 00

**NOTE:** All component dimensions given in U.S. inches.  
1 inch = 25.4 mm

# REPAIR PARTS

15 HP 42" TRACTOR - - MODEL NUMBER 917.257573

## ENGINE



**OPTIONAL EQUIPMENT**  
**Spark Arrester**

# REPAIR PARTS

## 15 HP 42" TRACTOR - - MODEL NUMBER 917.257573

### ENGINE

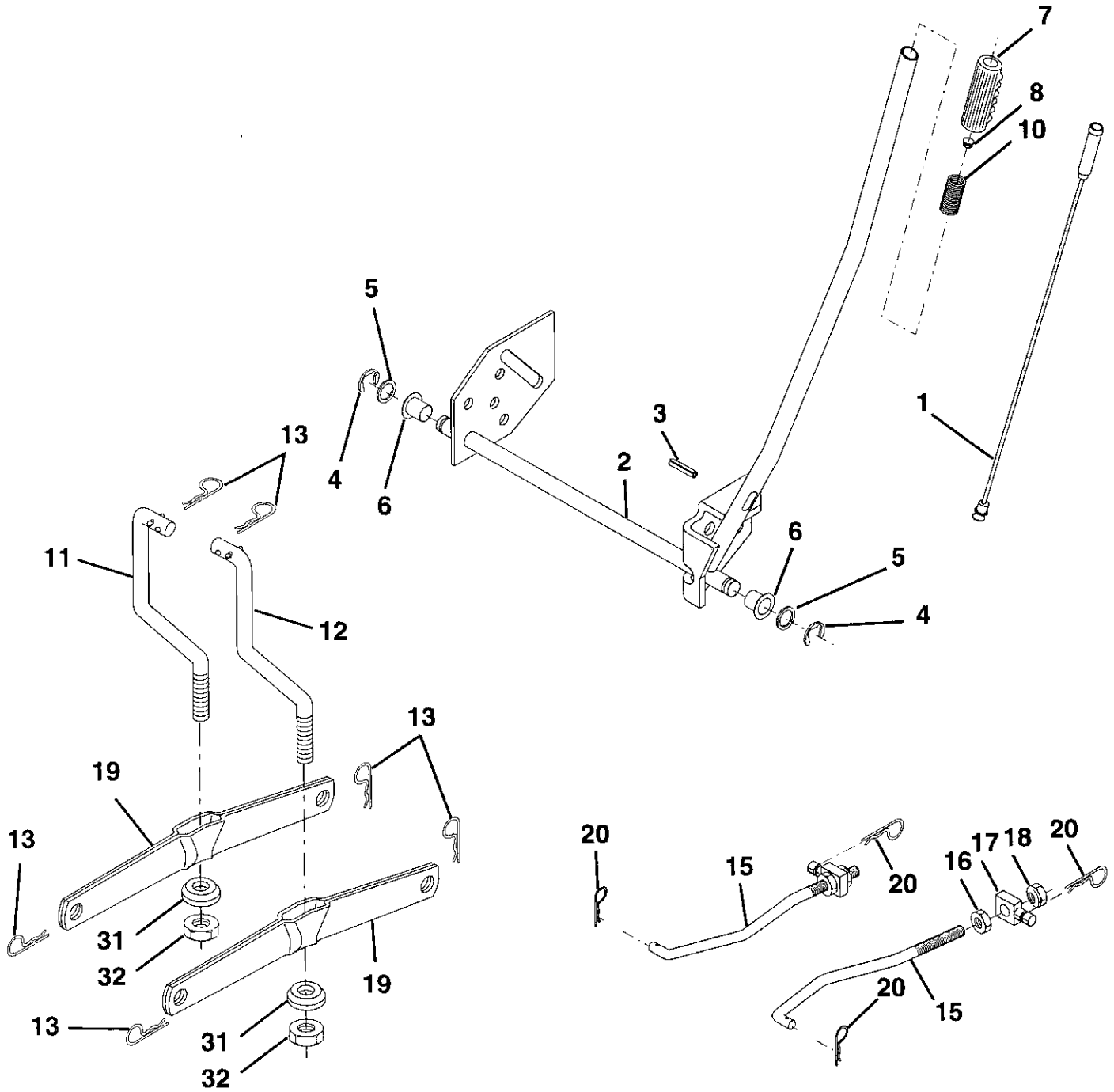
KEY NO.	PART NO.	DESCRIPTION
1	132759	Control Throt Rh Blk Pdl 15 10
2	17720410	Screw Hex Thd Cut 1/4-20x5/8 T
3	141129	Engine B&s 14hp ICQ Dual 1 Vt, Model No. 28N707, Type No. 0121-01
4	137352	Muffler Exhaust B&s Lt
13	125593X	Gasket 1 313 Id Tin Plated
14	13280324	Nipple Pipe 3/8 Npt X 3"
15	13200300	Elbow Std 90 Degree 3/8-18 Npt
16	STD551237	Washer Lock Ext Tooth 3/8
18	136718	Shield Pnt Heat
19	105839X	Receptacle 1/4 Turn Dacrotized
20	105838X	Retainer 1/4 Turn 365odx 222id
21	STD551025	Washer 9/32 X 5/8 X 16 Ga
22	123650X	Stud 1/4 Turn (replaces 105751
23	128953	Shield Pnt Heat Browning Grass
24	STD601005	Screw Tap Hex #10-24unc X 1/2
29	137180	Arrestor Spark
30	127057X	Pinch Weld Hood Black 2.00
31	109202X	Tank Fuel 1 25 Fr
32	123549X	Cap Asm Fuel W/sym Vented
33	123487X	Clamp Hose Blk
37	137040	Line Fuel 20"
38	---	Plug Oil Drain (Order From Engine Manufacturer)
40	124028X	Bushing Snap Nyl Blk Fuel Line
44	17490412	Screw Hexwsh Thdrol 1/4-20x3/4
46	19091416	Washer 9/32 X 7/8 X 16ga
62	STD551131	Washer Lock Hvy Hlcl Spr 5/16
72	71070512	Screw Hexhd Cap 5/16-18x3/4
78	17490620	Screw Thdrol 3/8-16x1-1/4 Tytt

**NOTE:** All component dimensions given in U.S. inches  
1 inch = 25.4 mm

# REPAIR PARTS

15 HP 42" TRACTOR - - MODEL NUMBER 917.257573

LIFT





# REPAIR PARTS

## 15 HP 42" TRACTOR - - MODEL NUMBER 917.257573

### LIFT

KEY NO.	PART NO.	DESCRIPTION
1	136973	Rod Asm. Lever
2	122507X	Shaft Asm. Lift
3	105767X	Pin Groove
4	12000002	E Ring #5133-62
5	19211621	Washer 21/32 x 1 x 21 Ga.
6	120183X	Bearing Nylon
7	125631X	Grip Handle Fluted
8	122365X	Button Plunger Read
10	122512X	Spring Cprsn
11	139865	Link Lift Lh Fixed Length
12	139866	Link Lift Rh Fixed Length
13	4939M	Retainer Spring
15	127218	Link Front
16	73350800	Nut Jam Hex 1/2-13 Unc
17	130171	Trunnion Blk Zinc
18	73800800	Nut Lock W/Wsh 1/2-13 Unc
19	139868	Arm Suspension Mower
20	3146R	Retainer Spring
31	140302	Bearing, Pvt. Lift. Spherical
32	73810600	Nut Lock 3/8-24 W/Nylon Insert

**NOTE:** All component dimensions given in U.S. inches  
1 inch = 25.4 mm



# REPAIR PARTS

## 15 HP 42" TRACTOR - - MODEL NUMBER 917.257573

### MOWER

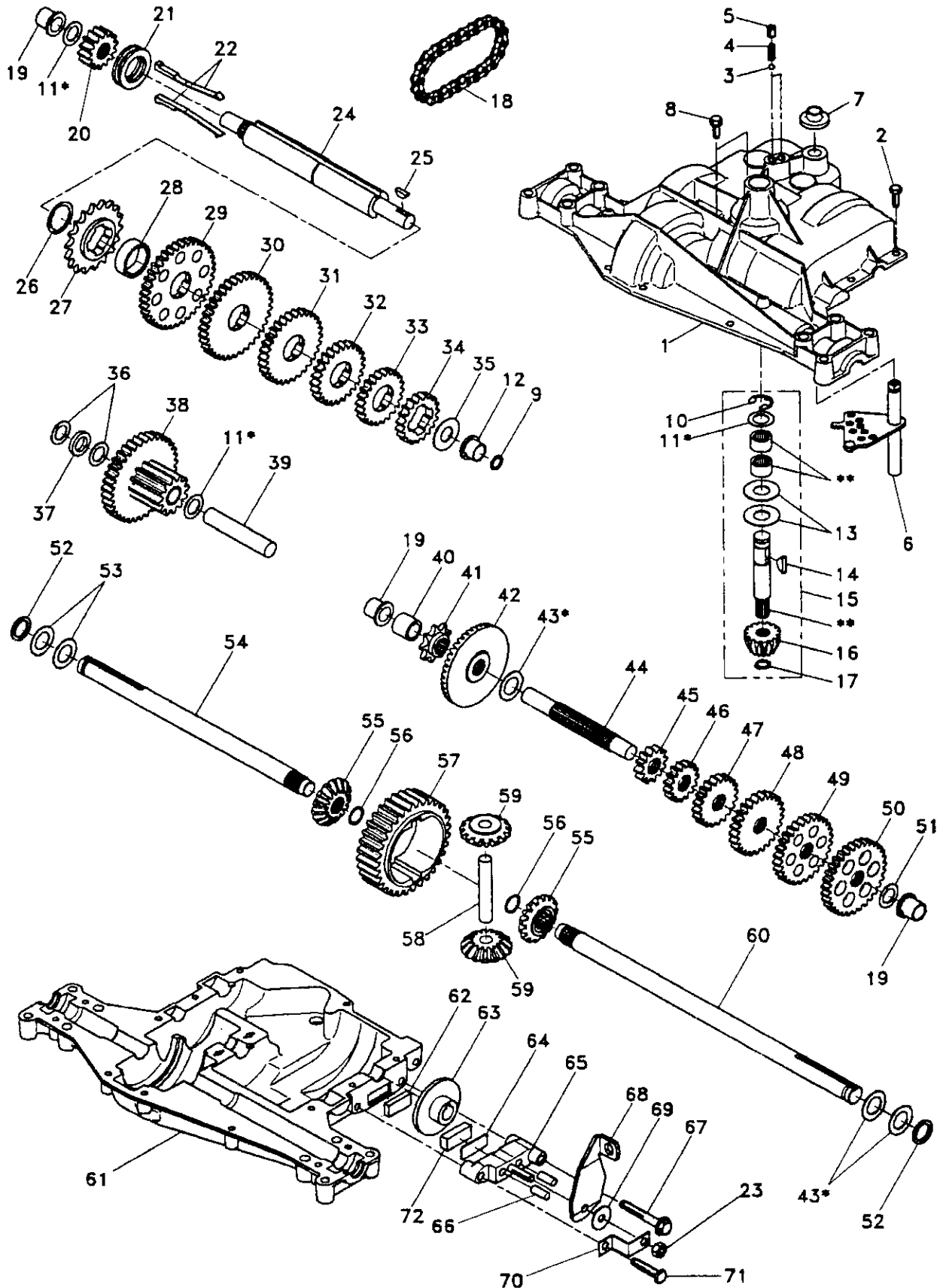
KEY NO.	PART NO.	DESCRIPTION	KEY NO.	PART NO.	DESCRIPTION
1	144393	Mower Housing	44	140088	Guard, Mandrel, L.H.
2	STD533107	Bolt	45	STD624003	Retainer
3	138017	Bracket Assembly, Sway Bar, Front	46	137729	Screw, Thd. Roll 1/4-20 x 5/8
4	138440	Bracket Assembly, Sway Bar	48	133944	Washer, Hardened
5	STD624008	Retainer Spring	49	133940	Roller Assembly, Cam Follower
6	130832	Arm, Suspension, Rear	50	131340	Bolt, Shoulder #10-24 Grade 5
8	850857	Bolt, Hex 3/8-24 x 1.25 Grade 8	51	STD541410	Locknut
9	STD551137	Washer, Lock	52	139888	Bolt, Shoulder 5/16-18 UNC
10	140296	Washer, Hardened	53	131845	Arm Assembly, Pad, Brake
11	134149	Blade, Mulching	54	133943	Washer, Hardened
12	129895	Bearing, Ball	55	140084	Arm, Idler
13	137645	Shaft Assembly, Mandrel, Vented (Includes Key Number 6)	56	122052X	Spacer, Retainer
14	128774	Housing, Mandrel, Vented	58	140086	Spring Torsion Brakes
15	110485X	Bearing, Ball, Mandrel	59	141043	Guard, TUV Idler
16	140329	Stripper, Vented Mower Deck	67	106932X	Knob, Round 3/8-16 UNC
17	72110610	Bolt, Carriage 3/8-16 x 1-1/4	68	144200	V-Belt
18	72140505	Bolt, Carriage 5/16-18 x 5/8	71	142427	Rod, Clutch, Primary, with Nibs
19	132827	Bolt, Shoulder	72	131870	Spring, Return
20	136888	Baffle, Vortex	73	127847	Arm, Clutch, Secondary
21	STD541431	Nut	74	121748X	Washer 25/32 x 1-5/8 x 16 Gauge
22	134753	Stiffener Bracket	75	1200029	Ring, Klip
23	131267	Bracket, Deflector	76	128903	Bolt, Shoulder 3/8-16 UNC x 1.44
24	105304X	Cap, Sleeve	77	127845	Keeper, Spring
25	123713X	Spring, Torsion, Deflector	78	140334	Arm, Clutch, Primary
26	110452X	Nut, Push	79	127498	Bushing, Large, Brass
27	130968	Shield, Deflector	80	128759	Spring, Mower Clutch
28	19111016	Washer 11/32 x 5/8 x 16 Gauge	81	73350600	Nut Hex Jam 3/8-16 UNC
29	131491	Rod, Hinge	82	142028	Trunnion Adj.
30	138776	Screw Thdrol Hex Head Zinc Mwr	83	120958X	Washer Sintered
31	129963	Washer, Spacer	84	144394	Keeper Belt Idler Fixed
32	129861	Pulley, Mandrel	85	72140620	Bolt Carriage 3/8-16 x 2-1/2 Gr 5
33	137266	Nut, Toplock, Flanged	92	73800600	Nut Lock Hex W/Ins 3/8-16 UNC
34	STD533717	Bolt	--	130794	Mandrel Assembly (Includes Key Numbers 8-10, 12-15, 31 and 32)
35	133835	Fastner, Christmas Tree	--	145411	Mower Deck, Complete
36	131494	Pulley, Idler, Flat			
37	19131316	Washer 13/32 x 13/16 x 16 Gauge			
40	STD541437	Nut			
41	133551	Rod, Pivot, with Nibs			
42	STD560907	Cotter Pin			
43	140083	Rod, Clutch, Secondary, with Nibs			
					Available mulcher plate kit not included with tractor:
			--	141112	Mulcher Close-out Plate Kit

**NOTE:** All component dimensions given in U.S. inches.  
1 inch = 25.4 mm.

# REPAIR PARTS

15 HP 42" TRACTOR - MODEL NUMBER 917.257573

DANA TRANSAXLE - MODEL NUMBER 4360-79



# REPAIR PARTS

## 15 HP 42" TRACTOR - MODEL NUMBER 917.257573

### DANA TRANSAXLE - MODEL NUMBER 4360-79

KEY PART NO.	NO.	DESCRIPTION	KEY PART NO.	NO.	DESCRIPTION
1	142671	Housing, Upper	41	105928X	Sprocket, 9 Teeth
2	2274J	Screw, Self-Tapping, Large 1/4-20 x .734	42	110084X	Gear, Bevel, 42 Teeth
3	134400	Ball, Detent	43	134394	* Assembly, Kit, Shim .750 Shaft
4	105904X	Spring, Detent	44	120473X	Shaft, Drive
5	105905X	Screw, Set	45	142678	Gear, Spur, 12 Teeth
6	138235	Kit, Shifter Assembly	46	142679	Gear, Spur, 15 Teeth
7	134399	Boot, Shifter	47	120407X	Gear, Spur, 20 Teeth
8	134791	Screw, Tapping w/Sealer	48	106589X	Gear, Spur, 25 Teeth
9	138241	Square Ring	49	120408X	Gear, Spur, 28 Teeth
10	142672	Ring, Retaining	50	105937X	Gear, Spur, 31 Teeth
11	134793	* Assembly, Kit, Shim .625 Shaft	51	2226J	Washer, Plain .632 x 1.00 x .060
12	142673	Bearing, Flange	52	134401	Washer, Neoprene
13	120415X	Washer, Plain .632 x 1.38 x .046	53	2264J	Washer, Plain .758 x 1.25 x .031
14	142674	Key, Woodruff, #9	54	120474X	Axle, L.H.
15	138234	Assembly, Kit, Input Shaft	55	110081X	Gear, Miter, 15 Teeth
16	110078X	Pinion, Bevel, 14 Teeth	56	105941X	Ring, Retaining
17	105909X	Ring, Retaining	57	110071X	Gear, Spur, 32 Teeth
18	105910X	Chain, 24 Pitches	58	120952X	Shaft, Cross
19	105911X	Bearing, Flange	59	110082X	Gear, Miter, 15 Teeth
20	142675	Gear, Spur, 14 Teeth	60	120475X	Axle, R.H.
21	138246	Collar, Clutch	61	142680	Housing, Lower
22	138236	Assembly, Kit, Clutch Keys	62	120961X	Puck, Friction
23	73810500	Locknut 5/16-24	63	7294J	Disc, Brake
24	142676	Shaft, Intermediate	64	108989X	Spacer
25	2244J	Key, Woodruff, #61	65	120953X	Jaw, Brake
26	105916X	Ring, Retaining	66	120954X	Pin, Dowel
27	120470X	Sprocket, 18 Teeth	67	134799	Screw, Self-Tapping, Large 5/16-18 x 2.25
28	110070X	Spacer	68	138244	Lever, Actuating
29	142677	Gear, Spur, 37 Teeth	69	108996X	Washer, Plain .321 x 1.00 x .055
30	142681	Gear, Spur, 35 Teeth	70	120956X	Bracket, Anti-Rotation
31	120405X	Gear, Spur, 30 Teeth	71	106596X	Screw, Self-Tapping, Large 5/16-18 x 1.44
32	108980X	Gear, Spur, 25 Teeth	72	120951X	Puck, Friction
33	120406X	Gear, Spur, 22 Teeth	73	120416X	Grease
34	134796	Gear, Spur, 19 Teeth			
35	105925X	Washer, Plain .640 x 1.37 x .061			
36	2232J	Washer, Plain .632 x 1.00 x .026			
37	108978X	Spacer .630 x 1.00 x .169			
38	110079X	Assembly, Gear, Combination of 12 Teeth and 35 Teeth			
39	124639X	Shaft, Idler			
40	120472X	Spacer .635 x .875 x .755			

\* Use in combinations to maintain proper clearances

\*\* Order Key No. 15

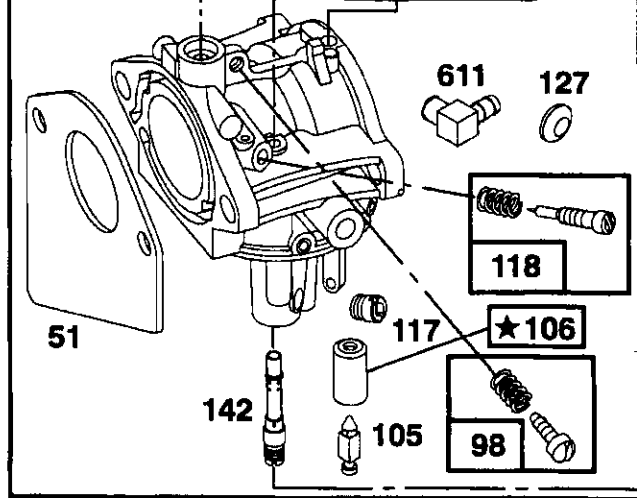
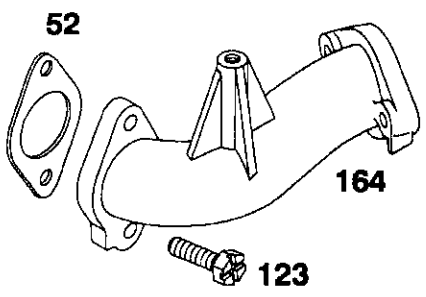
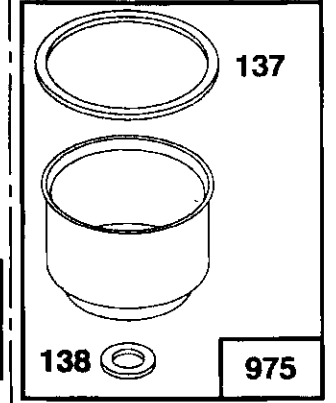
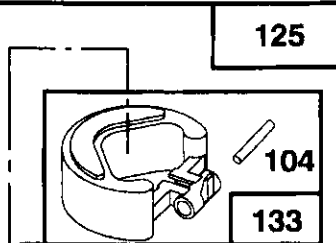
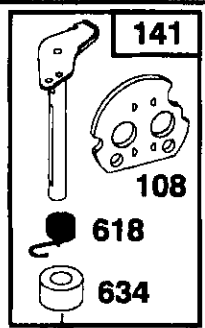
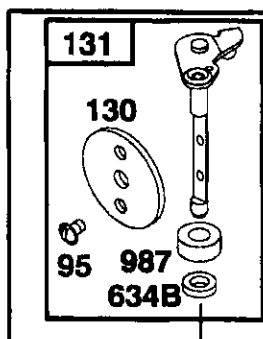
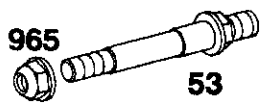
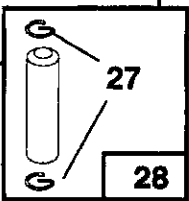
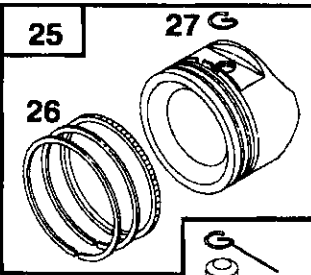
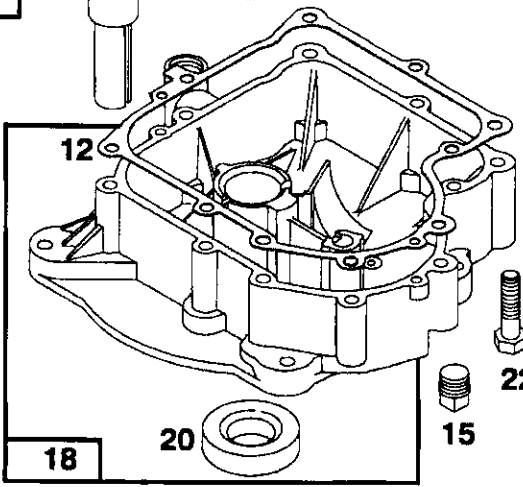
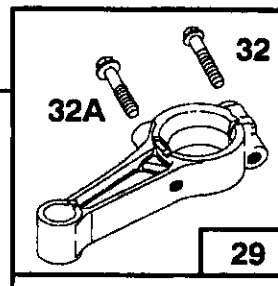
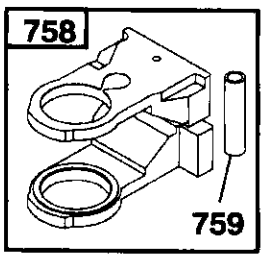
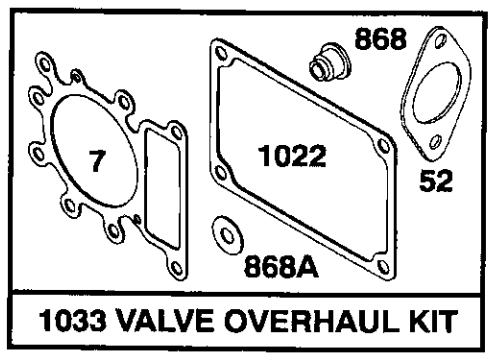
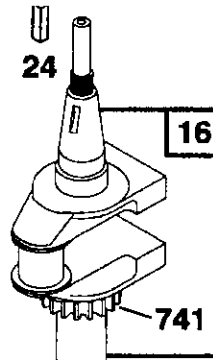
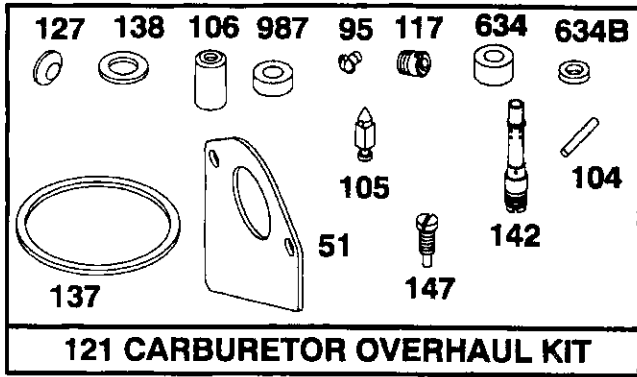
**NOTE:** All component dimensions given in U.S. inches  
1 inch = 25.4 mm



# REPAIR PARTS

15 HP 42" TRACTOR - - MODEL NUMBER 917.257573

BRIGGS & STRATTON ENGINE - MODEL NUMBER 28N707, TYPE NUMBER 0121-01

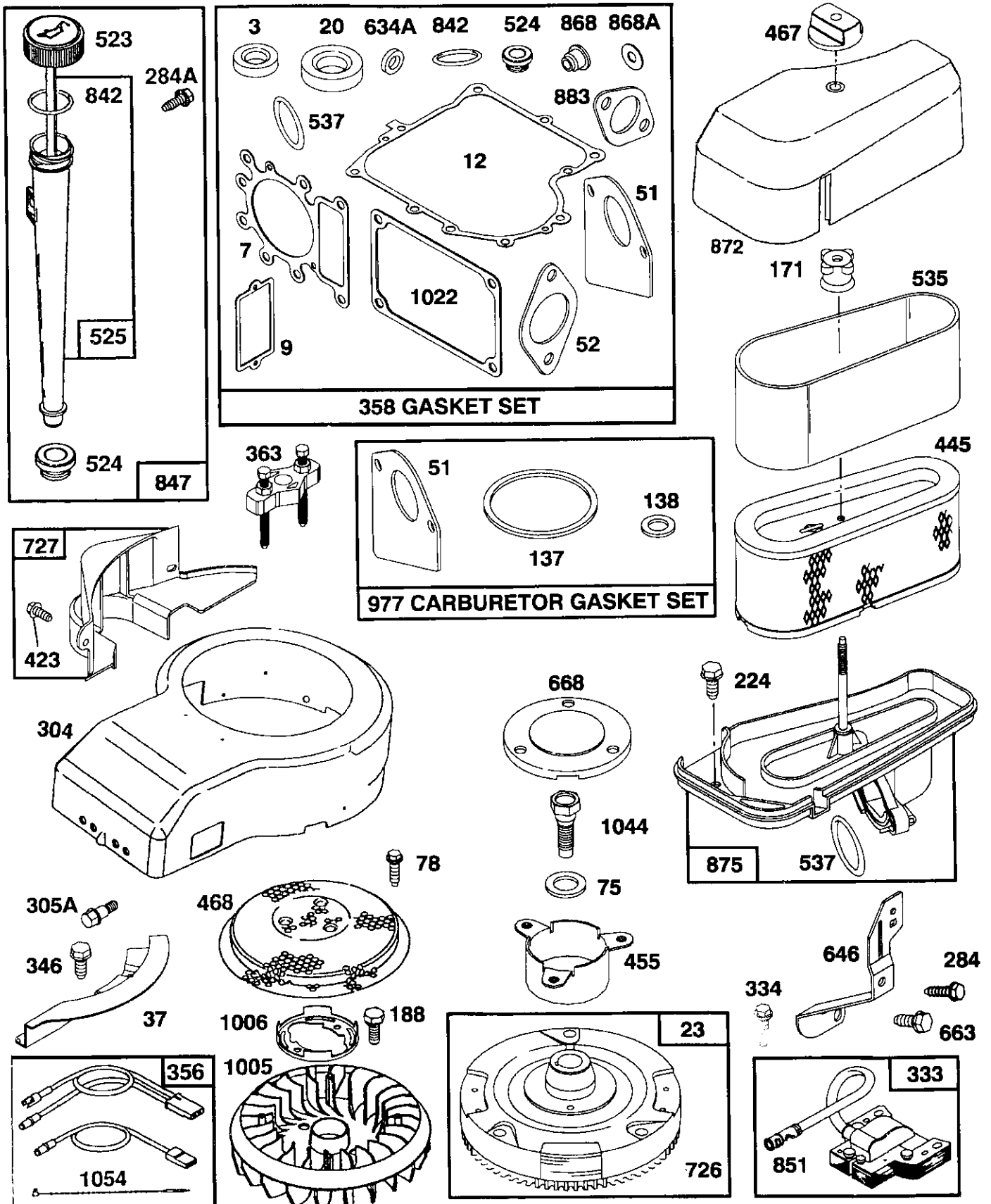


★ REQUIRES SPECIAL TOOLS TO INSTALL. SEE REPAIR INSTRUCTION MANUAL.

# REPAIR PARTS

15 HP 42" TRACTOR - - MODEL NUMBER 917.257573

BRIGGS & STRATTON ENGINE - MODEL NUMBER 28N707, TYPE NUMBER 0121-01

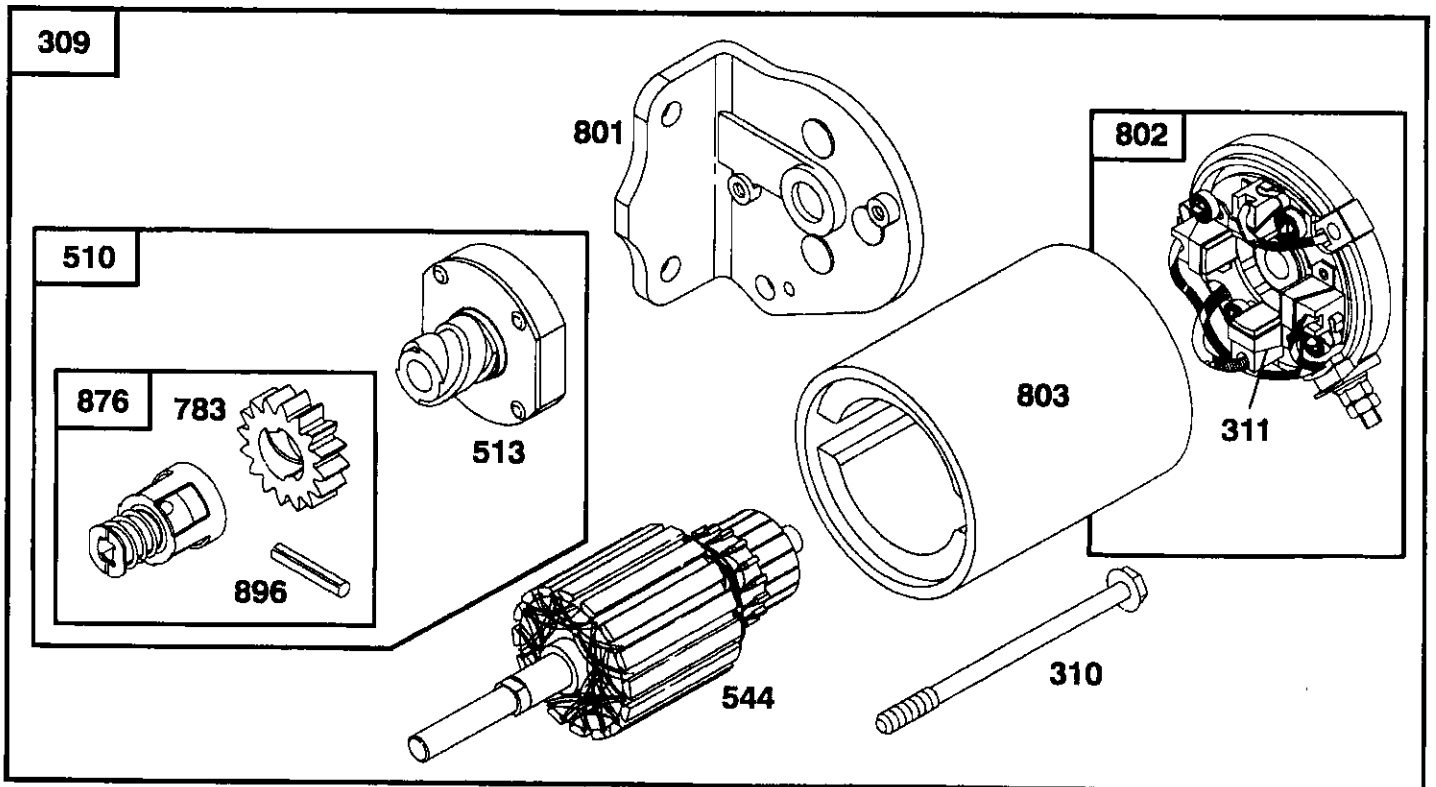
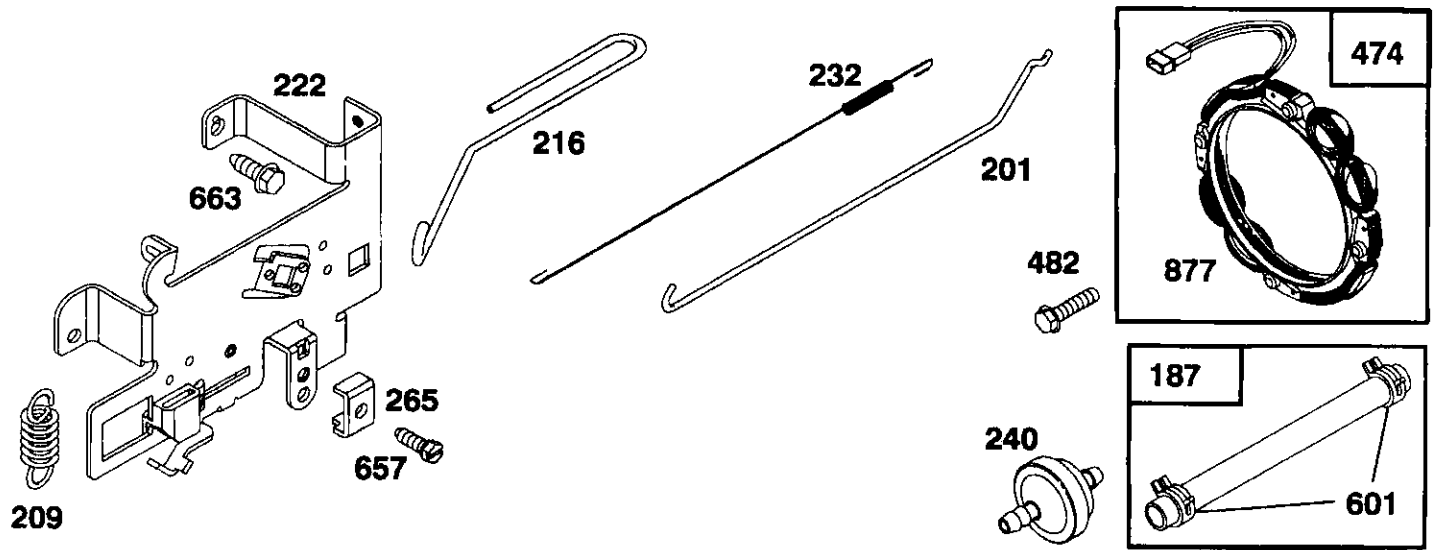




# REPAIR PARTS

15 HP 42" TRACTOR - - MODEL NUMBER 917.257573

BRIGGS & STRATTON ENGINE - MODEL NUMBER 28N707, TYPE NUMBER 0121-01



Reference Number		309	310	311	510	544	801	802	803
		Motor & Drive Assembly	Thru Bolt Assembly	Brush Assembly	Starter Drive Group	Armature Assembly	Drive End Cap Assembly	End Cap Assembly Commutator	Housing Assembly
Briggs & Stratton	Housing Length								
12V	3-21/32"	***394805	94003	395538	495878 *	390837	394856	395537 ***	398159



\* Includes #398003 Clutch Assembly (Ref. No. 513) \*\* Uses #94627 Screw-Hex. Head (Ref. No. 728) \*\*\* Includes Brush Set  
 #280104 Gear (Ref. No. 783)  
 #495877 Retainer and Pin (Ref. No. 876)  
 #94288 Roll Pin (Ref. No. 896)

# REPAIR PARTS

15 HP 42" TRACTOR - - MODEL NUMBER 917.257573

BRIGGS & STRATTON ENGINE - MODEL NUMBER 28N707, TYPE NUMBER 0121-01

KEY PART NO. NO.	DESCRIPTION	KEY PART NO. NO.	DESCRIPTION
1 496412	Cylinder Assembly	52 272569	*** Gasket, Carburetor (Elbow to Cylinder)
2 399265	Bearing, Cylinder	53 94637	Stud, Carburetor Mounting
3 391086	* Seal, Oil	75 224061	Washer, Spring
5 495858	Head, Cylinder	78 94626	Screw, Sems
7 272614	*** Gasket, Cylinder Head	95 94098	** Screw, Throttle
8 495735	Breather Assembly	98 495900	Screw, Idle Speed
9 27803	* Gasket, Valve Cover	104 231789	** Pin, Float Hinge
10 94621	Screw, Sems	105 231855	** Valve Float
11 281246	Tube, Breather	106 231854	** Seat, Inlet Valve
12 271916	* Gasket, Crankcase Cover, 1/64"	108 224540	Valve, Choke
271997	* Gasket, Crankcase Cover, .005"	117 231858	** Jet, Needle Valve
271996	* Gasket, Crankcase Cover, .009"	118 495932	Valve, Needle
13 94728	Screw, Cylinder Head	121 495799	Carburetor Overhaul Kit
15 94239	Plug, Oil Drain	123 94616	Screw, Elbow Mounting
16 495162	Crankshaft	125 495935	Carburetor Assembly
94196	Timing Gear Key	127 - - -	** Plug, Welch (Sold in Kit Only)
18 494238	Base, Engine	130 224539	Valve, Throttle
20 291675	* Seal, Oil	131 494379	Shaft and Lever, Throttle
22 94624	Screw, Sems, Base Mounting	133 494381	Float, Carburetor
23 492326	Flywheel and Ring Gear Assembly, Magneto	137 281165	**** Gasket, Float Bowl
24 222698	Key, Flywheel	138 281164	**** Washer, Bowl
25 495860	Piston Assembly, Standard Size	141 495931	Shaft and Lever, Choke
495977	Piston Assembly, .010" Oversize	142 231859	** Nozzle, Carburetor
495978	Piston Assembly, .020" Oversize	147 231794	** Pilot, Jet
495979	Piston Assembly, .030" Oversize	164 214053	Elbow, Carburetor
26 495854	Ring Set, Piston, Standard Size	166 94555	Stud, Rocker Arm
495852	Ring Set, Piston, .010" Oversize	171 281051	Nut, Air Cleaner Mounting
495851	Ring Set, Piston, .020" Oversize	187 393815	Line, Fuel (11" Long, Cut to Suit)
495855	Ring Set, Piston, .030" Oversize	188 93535	Screw, Hex Head, 3/4
27 260924	Lock, Piston Pin	192 492160	Screw Assembly, Rocker Arm
28 299691	Pin Assy., Piston, Standard Size	201 262767	Link, Governor
391286	Pin Assy., Piston, .005" Oversize	209 260695	Spring, Governor
29 494504	Rod Assembly, Connecting	216 262766	Link, Choke
495490	Rod Assembly, Connecting, .020" Undersize Crankpin Bore	219 490815	Gear, Governor
32 94695	Screw, Hex Washer Head, 1-57/64	222 495611	Plate, Governor Control
32A 94648	Screw, Hex Washer Head, 1-5/8	224 94729	Screw, Sems, Air Cleaner
33 495856	Valve, Exhaust	225 231058	Crank, Governor
34 495857	Valve, Intake		
35 262811	Spring, Valve	* Included in Gasket Set (495993)	
37 224502	Guard, Flywheel	** Included in Carburetor Kit (495799)	
40 224641	Retainer, Valve Spring	*** Included in both Gasket Set (495993) and Valve Overhaul Kit (495992)	
45 262411	Tappet, Valve	**** Included in Gasket Set (495993), Carburetor Kit (495799) and Carburetor Gasket Set (494385)	
46 494433	Gear, Cam		
51 272465	**** Gasket, Carburetor (Carburetor to Elbow) (Also Included in Gasket Set, Part Number 495993)		

**NOTE:** All component dimensions given in U.S. inches  
1 inch = 25.4 mm

# REPAIR PARTS

15 HP 42" TRACTOR - - MODEL NUMBER 917.257573

BRIGGS & STRATTON ENGINE - MODEL NUMBER 28N707, TYPE NUMBER 0121-01

KEY PART NO.	NO.	DESCRIPTION	KEY PART NO.	NO.	DESCRIPTION
227	493935	Lever Assembly, Governor	657	93496	Screw, Sems
230	94742	Washer, Governor Crank	668	280848	Spacer
232	262785	Spring, Governor Link	718	230192	Pin, Dowel
238	262836	Cap, Valve	726	392134	Gear, Ring
240	394358	Filter, Fuel (In Fuel Line)			(Includes Mounting Hardware)
265	221535	Clamp, Casing	727	490324	Cover, Starter
284	94326	Screw, Hex Head	741	262932	Gear, Timing
284A	94073	Screw, Hex Head	757	213998	Link, Counterweight
294	810068	Screw, Set	758	399891	Counterweight Assembly
304	496280	Housing, Blower	759	298909	Pin, Counterweight
305	94513	Screw, Hex, Head, Blower Housing Mounting	761	94593	Screw, Counterweight
305A	94734	Screw, Hex Head, Blower Housing Mounting	842	270920	* Seal, Oil Filler Cap
306	224696	Shield, Cylinder	847	496415	Fill Group, Oil
307	94623	Screw, Cylinder Shield	851	224110	Terminal, Ignition Cable
333	495859	Armature, Magneto	868	494435	*** Seal Assembly, Valve
334	93381	Screw, Sems, Armature Mounting	868A	272610	*** Gasket, Valve
337	491055	Plug, Spark	871	262835	Bushing, Guide (Intake & Exhaust)
346	93705	Screw, Hex Head	872	281361	Cover, Air Cleaner
356	496070	Wire Assembly	875	495862	Body, Air Cleaner
358	495993	Gasket Set	877	393456	Diode and Connector Assembly
363	19203	Puller, Flywheel	947	495739	Solenoid
383	89838	Wrench, Spark Plug	965	94108	Nut, Hex
423	94073	Screw, Sems	975	495933	Bowl Assembly, Carburetor
445	493909	Cartridge, Air Cleaner	977	494385	Carburetor Gasket Set
455	222561	Cup, Screen Mounting	987	281166	** Seal, Throttle Shaft
467	493903	Knob, Air Cleaner	1005	281355	Fan, Flywheel
468	224948	Screen, Flush Rotating	1006	224413	Retainer, Fan
474	393474	Stator, Alternator	1022	272475	*** Gasket, Cover
482	93621	Screw, Sems	1023	224552	Cover, Rocker Arm
523	495230	Cap and Dipstick, Oil Filler	1026	494432	Rod, Push, Intake
524	68838	* Seal, Filler Tube		495136	Rod, Push, Exhaust
525	496113	Tube, Oil Filler	1029	224554	Arm, Rocker
535	272403	Element, Filter	1033	495992	Valve Overhaul Kit
537	281106	* O-Ring, Air Cleaner	1034	495248	Guide Assembly, Push Rod
552	231597	Bushing, Governor Crank	1044	94673	Screw, Hex Head
562	92613	Bolt, Governor Lever	1054	270723	Tie, Cable
592	231082	Nut, Hex			RPM Settings: Low Speed: 1650-1850 High Speed: 3200-3400
601	93053	Clamp, Fuel Pipe			* Included in Gasket Set (495993)
611	493496	Elbow, Fuel Pipe			** Included in Carburetor Kit (495799)
614	93306	Pin, Cotter			*** Included in both Gasket Set (495993) and Valve Overhaul Kit (495992)
615	93307	Retainer, E-Ring			**** Included in Gasket Set (495993), Carburetor Kit (495799) and Carburetor Gasket Set (494385)
618	262803	Spring, Choke Return			
634	281168	** Seal, Choke Shaft			
634A	491323	* Seal, Governor			
634B	281167	** Washer, Throttle Shaft			
635	280872	Elbow, Spark Plug			
646	224546	Brace, Air Cleaner			

**NOTE:** All component dimensions given in U.S. inches  
1 inch = 25.4 mm

---

# SERVICE NOTES

---