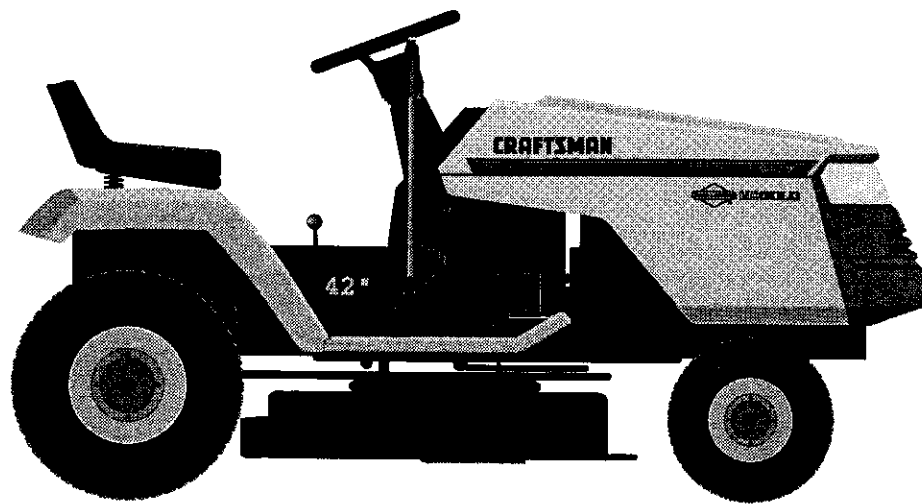


**SEARS**

# **CRAFTSMAN<sup>®</sup>**

**MODEL NUMBER 917.257621 OWNER'S MANUAL**

- **Assembly**
- **Operation**
- **Customer Responsibilities**
- **Service and Adjustments**
- **Repair Parts**



**CAUTION: Read and follow all safety rules and instructions before operating this equipment.**

---

---

---

---

Sears, Roebuck and Co., Hoffman Estates, IL 60179 U.S.A.



HANDS AND FEET AND THROWING OBJECTS.  
MAY RESULT IN SERIOUS INJURY OR DEATH.

### CHILDREN

Accidents can occur if the operator is not alert to the presence of children. Children are often attracted to the machine during mowing activity. *Never* assume that children will remain where you last saw them.

Keep children out of the mowing area and under the watchful eye of another responsible adult.

Stop and turn machine off if children enter the area.

When backing up, look behind and *down* for small children.

Never carry children. They may fall off and be seriously injured or interfere with safe machine operation.

Do not allow children to operate the machine.

Exercise extra care when approaching blind corners, shrubs, trees, or other objects that may obscure vision.

### FUELS

Exercise extra care in handling gasoline and other fuels. They are highly flammable and vapors are explosive.

Use only an approved container.

Never remove gas cap or add fuel with the engine running. Allow engine to cool before refueling. Do not smoke.

Never refuel the machine indoors.

Never store the machine or fuel container inside where there is an open flame, such as a water heater.

Do not run a machine inside a closed area.

Keep nuts and bolts, especially blade attachment bolts, tight. Keep equipment in good condition.

Do not tamper with safety devices. Check their proper operation regularly.

Keep machine free of grass, leaves, or other debris build-up. Clean up oil or fuel spillage. Allow machine to cool before refueling.

Check and inspect the equipment if you strike an object. Stop the machine, if necessary, before restarting.

Never make adjustments or repairs with the engine running.

Blade catcher components are subject to wear, damage, and deterioration, which could expose moving parts or allow debris to be thrown. Frequently check components and replace with manufacturer's recommended parts, when necessary.

Blade edges are sharp and can cut. Wrap the blade(s) or wear gloves, and use extra caution when servicing them.

Check brake operation frequently. Adjust and service as required.



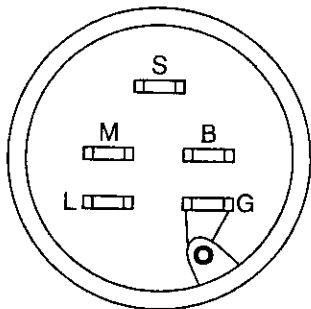
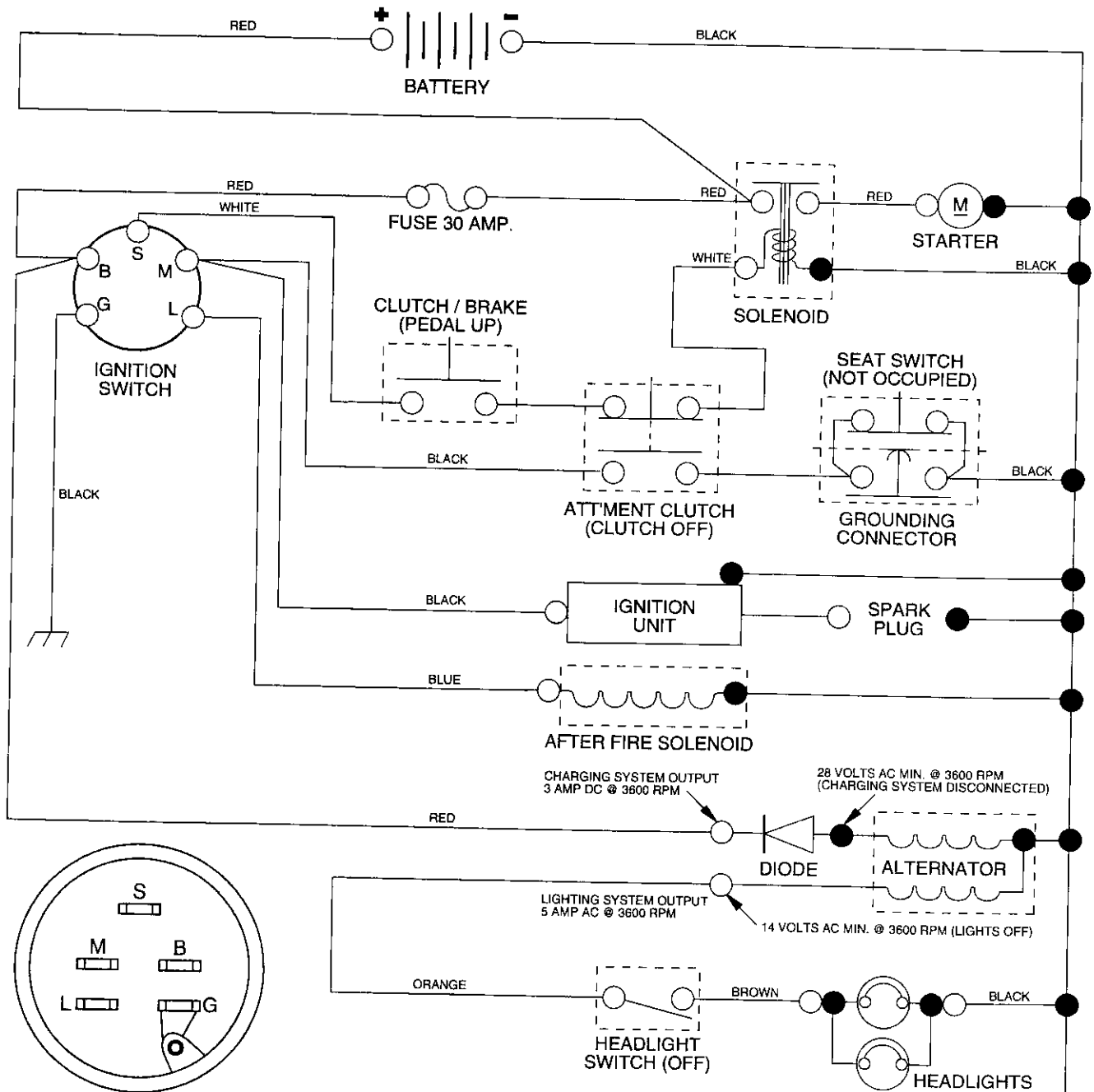
Look for this symbol to point out important safety precautions. It means **CAUTION!!! BECOME ALERT!!! YOUR SAFETY IS INVOLVED.**



**CAUTION:** Always disconnect spark plug wire and place wire where it cannot contact spark plug in order to prevent accidental starting when setting up, transporting, adjusting or making repairs.

# 12.5 HP 38" TRACTOR - - MODEL NUMBER 917.257621

## SCHEMATIC



**IGNITION SWITCH**

POSITION	CIRCUIT
OFF	M + G
ON	B + L
START	B + S + L

### WIRING INSULATED CLIPS

**NOTE:** IF WIRING INSULATED CLIPS WERE REMOVED FOR SERVICING OF UNIT, THEY SHOULD BE REPLACED TO PROPERLY SECURE YOUR WIRING

### NOTE

YOUR TRACTOR IS EQUIPPED WITH A SPECIAL ALTERNATOR SYSTEM. THE LIGHTS ARE NOT CONNECTED TO THE BATTERY, BUT HAVE THEIR OWN ELECTRICAL SOURCE. BECAUSE OF THIS, THE BRIGHTNESS OF THE LIGHTS WILL CHANGE WITH ENGINE SPEED. AT IDLE THE LIGHTS WILL DIM. AS THE ENGINE IS SPEEDED UP, THE LIGHTS WILL BECOME THEIR BRIGHTEST.

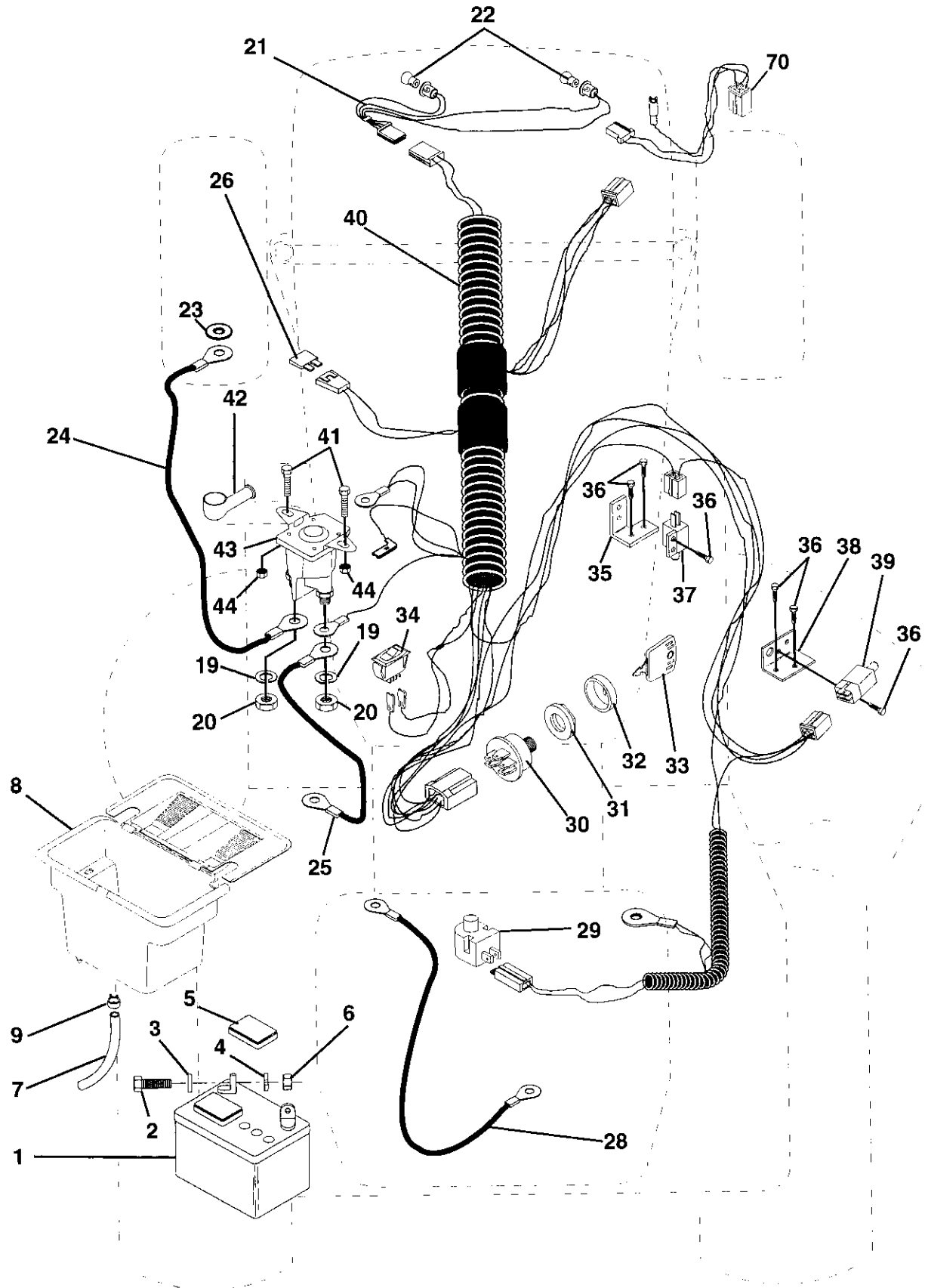
● NON-REMOVABLE CONNECTIONS

○ REMOVABLE CONNECTIONS

# REPAIR PARTS

12.5 HP 38" TRACTOR - - MODEL NUMBER 917.257621

## ELECTRICAL



# REPAIR PARTS

## 12.5 HP 38" TRACTOR - - MODEL NUMBER 917.257621

### ELECTRICAL

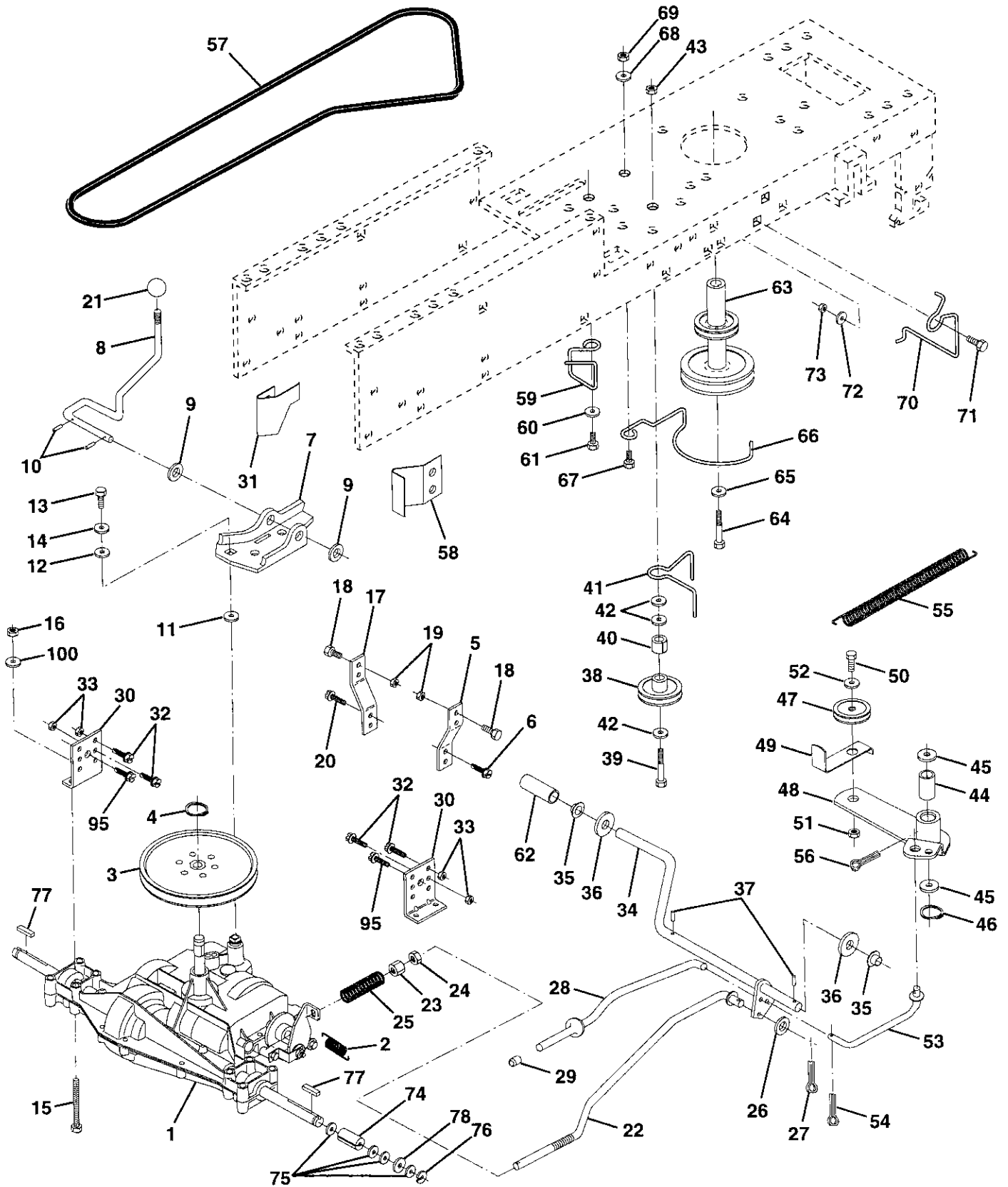
KEY NO.	PART NO.	DESCRIPTION
1	121265X	Battery 12 Volt 25 AMP
2	74760412	Bolt Hex Hd 1/4-20unc X 3/4
3	19091016	Washer 9/32 X 5/8 X 16 Ga
4	10040400	Washer Lock Hvy Helical 1/4
5	121264X	Caps Battery 20/25/30 AMP
6	73220400	Nut Fin Hex 1/4-20 Unc
7	109238X	Tube Plastic 12"
8	129965	Case Battery Hng Mech W/lid
9	109596X	Clamp Hose Olive
19	10090400	Washer Lock 1/4
20	73350400	Nut Jam Hex 1/4-20 Unc
21	136850	Harness Asm Light W/4152j
22	4152J	Bulb Light #1156
23	11150400	Washer Lock Internal Tooth 1/4
24	4799J	Cable Battery 6 Ga 11" red
25	132202	Cable Battery 6 Ga 43" red
26	108824X	Fuse 30 AMP Auto Green
28	4207J	Cable Ground 6 Ga 12" black
29	121305X	Switch Plunger Nc Gray
30	140399	Switch Ign 5 Term Wo/wash/nut
31	140400	Nut Ignition
32	141226	Cover Sw Key Blk 1 25 Text SLT
33	140403	Key Ign Molded Craftsman
34	110712X	Switch Light Blk Blk Red
35	140336	Bracket Switch Interlock
36	17021008	Screw Tap Hex #10-24unc X 1/2
37	104445X	Switch Intlk Clutch Red 2 Term
38	108236X	Bracket Switch Clutch
39	109553X	Switch Intlk Clutch Red 4 Term
40	140414	Harness Ign Bs Dash Headlights
41	71110408	Bolt Blk. Fin Hex 1/4-20 Unc x 1/2
42	131563	Cover Terminal Red
43	138406	Solenoid
44	73640400	Nut Keps Hex 1/4-20 Unc
70	140413	Harness Engine B&S

**NOTE:** All component dimensions give in U.S. inches  
1 inch = 25.4 mm

# REPAIR PARTS

12.5 HP 38" TRACTOR - - MODEL NUMBER 917.257621

## DRIVE



# REPAIR PARTS

## 12.5 HP 38" TRACTOR - - MODEL NUMBER 917.257621

### DRIVE

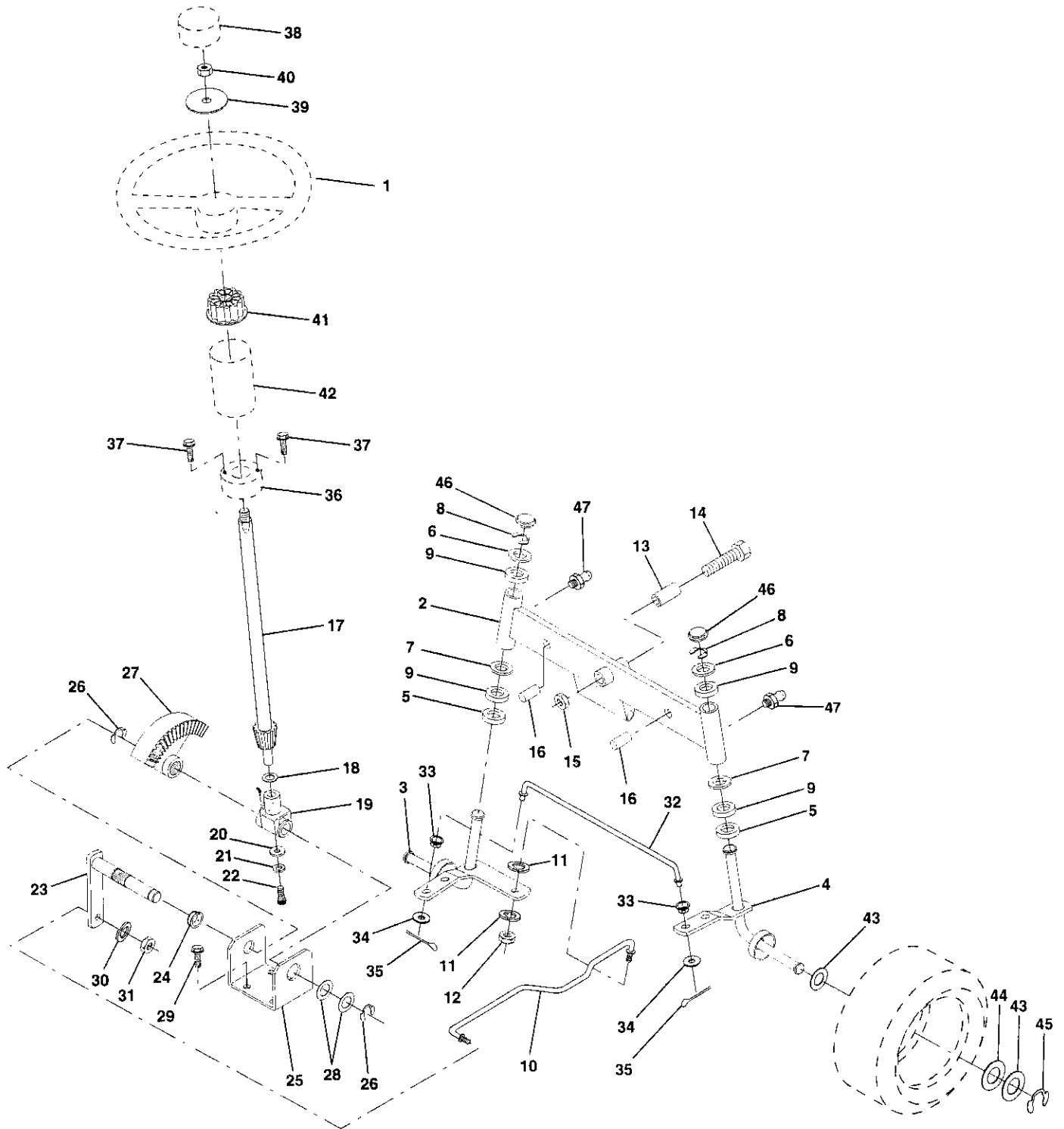
KEY NO.	PART NO.	DESCRIPTION	KEY NO.	PART NO.	DESCRIPTION
1	142602	Transaxle 5sp Std Dana, Model No. 4360-79	42	19131312	Washer 13/32 X 13/16 X 12 Ga
2	110422X	Spring Return Brake T/a Zinc	43	STD541437	Nut Crownlock 3/8-16 Unc
3	123666X	Pulley Transaxle Alum	44	105706X	Bearing Nyl 503 X 628 X 1 25
4	12000028	Ring Retainer # 5100-62	45	110812X	Washer Hardened
5	121520X	Strap Pnt Torque 30 Deg Blk	46	12000039	Ring Klip #t5304-50
6	17490512	Screw Thdrol 5/16-18 X 3/4 Tyt	47	127783	Pulley Idler V Groove Plastic
7	130802	Plate Pnt Rod Shift T/a (blk )	48	123789X	Bellcrank Asm
8	131679	Rod Shifter Blk (dana)	49	123205X	Retainer Belt Style Spring
9	19151216	Washer 15/32 X 3/4 X 16ga	50	STD523715	Bolt Hex Hd 3/8-16unc X 1-1/2
10	STD561210	Pin Cotter 1/8 X 1 Cad	51	STD541437	Nut Crownlock 3/8-16 Unc
11	105701X	Washer Plate Shf 388 Sq Hole	52	STD551037	Washer 13/32 X 13/16 X 16 Ga
12	19091210	Washer 9/32 X 3/4 X 10 Ga	53	105710X	Link Clutch 7 66
13	71040412	Bolt Fin Hex 1/4-28unfx3/4 Gr8	54	STD561210	Pin Cotter 1/8 X 3/4 Cad
14	STD551125	Washer Lock Hvy Helical 1/4	55	105709X	Spring Return Clutch 6 75
15	74780544	Bolt Fin Hex 5/16-18unc X 2-3/4	56	STD561210	Pin Cotter 1/8 X 3/4 Cad
16	STD541431	Nut Lock 5/16-18 Unc	57	130801	V-belt Ground Drive 95.25
17	121520X	Strap Pnt Torque 30 Deg Blk	58	127274X	Keeper Belt Rh Lt Pnt/zinc 16g
18	STD523710	Bolt Fin Hex 3/8-16unc X 1	59	140312	Retainer Belt Chassis Lh Zinc
19	STD541437	Nut Lock 3/8-16 Unc	60	19131312	Washer 13/32 X 13/16 X 12 Ga
20	17490512	Screw Thdrol 5/16-18 X 3/4 Tyt	61	17490612	Screw Thdrol 3/8-16x3/4 Ty-tt
21	106933X	Knob Rd 1/2-13 Plstc Thds Blk	62	8883R	Cover Pedal Blk Std
22	130804	Rod Brake Lt	63	140186	Pulley Engine
23	STD541437	Nut Lock Hex W/wsh 3/8-16unc	64	71170764	Bolt Finhex 7/16-20 x 4 g5
24	STD541237	Nut Hex Jam 3/8-16 Unc	65	STD551143	Washer Lock Hvy Hlcl Spr 7/16
25	106888X	Spring Rod Brake 2 00 Zinc	66	129921	Keeper Belt Engine Lh Lt
26	STD551037	Washer 13/32 X 13/16 X 16 Ga	67	STD523710	Bolt Fin Hex 3/8-16unc X 1
27	STD561210	Pin Cotter 1/8 X 3/4 Cad	68	19131312	Washer 13/32 X 13/16 X 12 Ga
28	140448	Rod Brake Parking Lt	69	STD541437	Nut Crownlock 3/8-16 Unc
29	124236X	Cap Parking Brake Red	70	134683	Guide Belt Dr Mower Rh
30	130807	Bracket Transmission	71	STD523710	Bolt Fin Hex 3/8-16unc X 1
31	127275X	Keeper Belt Lh Lt 14 Ga	72	19132012	Washer 13/32 X 1-1/4 X 12 Ga
32	STD523107	Bolt Fin Hex 3/8-16unc X 3/4	73	STD541437	Nut Crownlock 3/8-16 Unc
33	STD541431	Nut Lock 5/16-18 Unc	74	109502X	Spacer Split .80x1.94
34	122424X	Shaft Asm Pedal Foot 1 930	75	121749X	Washer 25/32 X 1 1/4 X 16 Ga
35	120183X	Bearing Nylon Blk 629 Id	76	STD581075	Ring E #5133-75
36	STD551062	Washer 21/32 X 1 X 16 Ga	77	123583X	Key Square 2 0 X 1845/ 1865
37	STD571810	Pin Roll 3/16 X 1"	78	121748X	Washer 25/32 X 1 5/8 X 16ga
38	123674X	Pulley Idler Flat	95	17490612	Screw Thdrol 3/8-16 x 3/4 Ty Tt
39	STD523727	Bolt Fin Hex 3/8-16unc X 2-3/4	100	19111216	Washer 11/32 x 3/4 x 16 Ga.
40	4470J	Spacer Split 395 X 59 Bzp			
41	109070X	Keeper Belt Retainer			

**NOTE:** All component dimensions given in U.S. inches  
1 inch = 25.4 mm

# REPAIR PARTS

12.5 HP 38" TRACTOR - - MODEL NUMBER 917.257621

## STEERING ASSEMBLY





# REPAIR PARTS

## 12.5 HP 38" TRACTOR - - MODEL NUMBER 917.257621

### STEERING ASSEMBLY

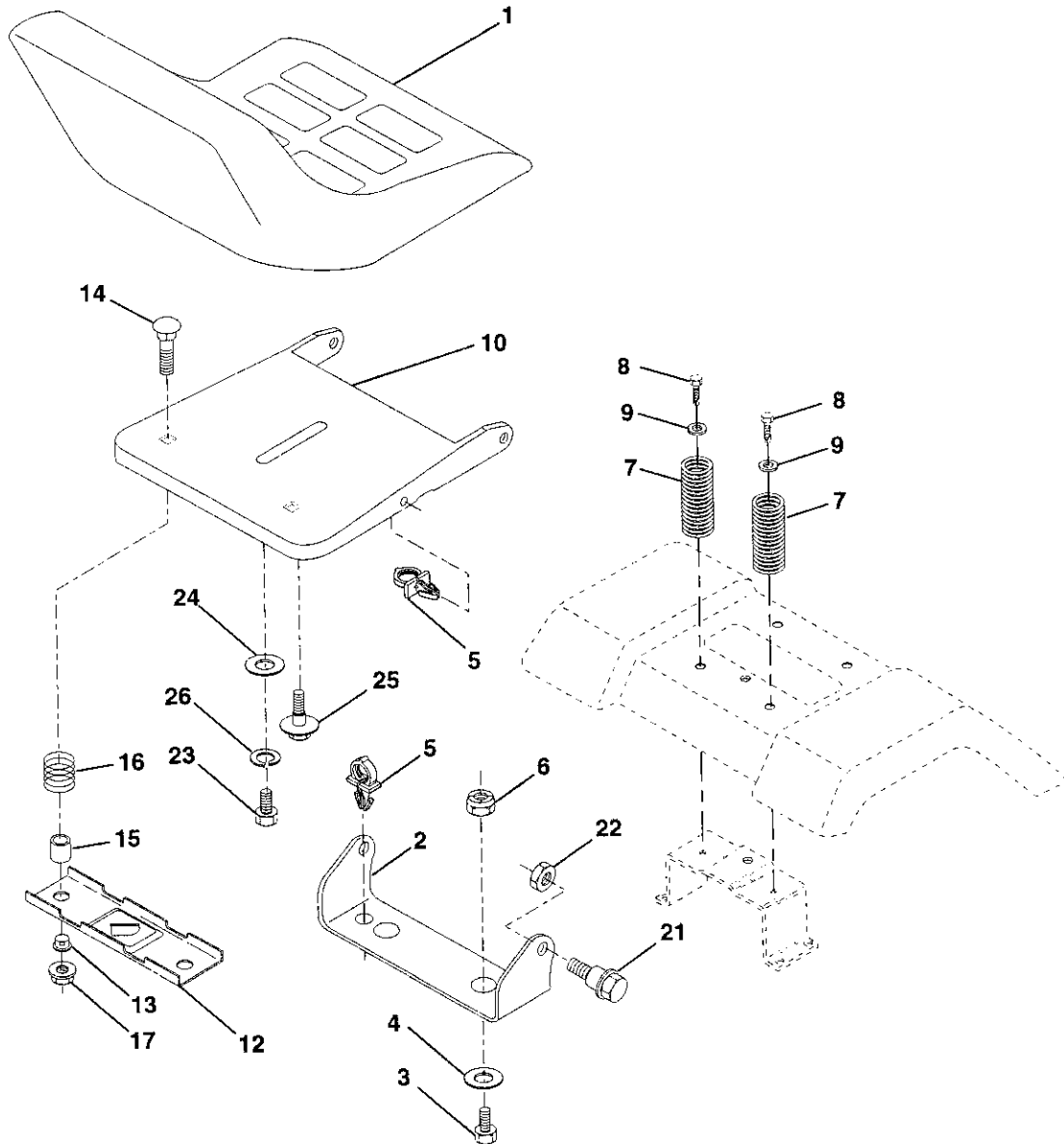
KEY NO.	PART NO.	DESCRIPTION
1	139768	Wheel Steering Std Black
2	142033	Axle Asm Front
3	135227	Spindle Asm Lh
4	135228	Spindle Asm Rh
5	6266H	Bearing Race Thrust Harden
6	121748X	Washer 25/32 X 1 5/8 X 16ga
7	19272016	Washer 27/32 X 1 1/4 X 16 Ga
8	12000029	Ring Klip #t5304-75
9	3366R	Bearing Col Strg Blk
10	130468	Link Drag Sol Ball Jt 20 064
11	STD551137	Washer Lock Hvy Hlcl Spr 3/8
12	73610600	Nut Fin Hex 3/8-24 Unf
13	110438X	Spacer Bearing Axle Front
14	74011056	Bolt Hex 5/8-11 Unc X 3-1/2
15	73901000	Locknut Flange 5/8-11 Unc
16	132624	Pin Axle 5/8 X 1 55/1 54 Lg
17	132614	Shaft Asm Strg 5/8 X 15 19 Lt
18	57079	Washer Thrust 515x 750x 033
19	124035X	Support Shaft
20	126684X	Washer Shim 1/4 X 5/8 X .062
21	STD551125	Washer Lock Hvy Helical 1/4
22	71070410	Screw Hex Socket 1/4-20 X 5/8
23	127501	Shaft Asm Pittman
24	109816X	Nyliner Snap In
25	124036X	Bracket Steering
26	12000029	Ring Klip #t5304-75
27	136874	Gear Sector
28	6266H	Bearing Race Thrust Harden
29	17490612	Screw Thdrol 3/8-16x3/4 Ty-tt
30	STD551137	Washer Lock Hvy Hlcl Spr 3/8
31	73610600	Nut Fin Hex 3/8-24 Unf
32	130465	Rod Tie Wire Form 19 75 Mech
33	126847X	Bushing Rod Tie Blk Lt
34	19131416	Washer 13/32 X 7/8 X 16ga
35	STD561210	Pin Cotter 1/8 X 3/4 Cad
36	132196	Bushing Strg 5/8 Id Dash
37	STD611005	Screw Slftp #10-16 X 1/2 Ty-b
38	139769	Insert Cap Strg Wheel Std Blk
39	19133808	Washer 13/32 X 2-3/8 X 8 Ga
40	STD541537	Nut Lock Center 3/8-24unf
41	104820X	Adaptor Wheel Strg 640/ 635id
42	124417X	Boot Shaft Steering
43	121749X	Washer 25/32 X 1 1/4 X 16 Ga
44	121748X	Washer 25/32 X 1 5/8 X 16ga
45	12000029	Ring Klip #t5304-75
46	121232X	Cap Spindle Fr Top Blk
47	6855M	Fitting Grease

**NOTE:** All component dimensions given in U.S. inches  
1 inch = 25.4 mm

# REPAIR PARTS

12.5 HP 38" TRACTOR - - MODEL NUMBER 917.257621

## SEAT ASSEMBLY



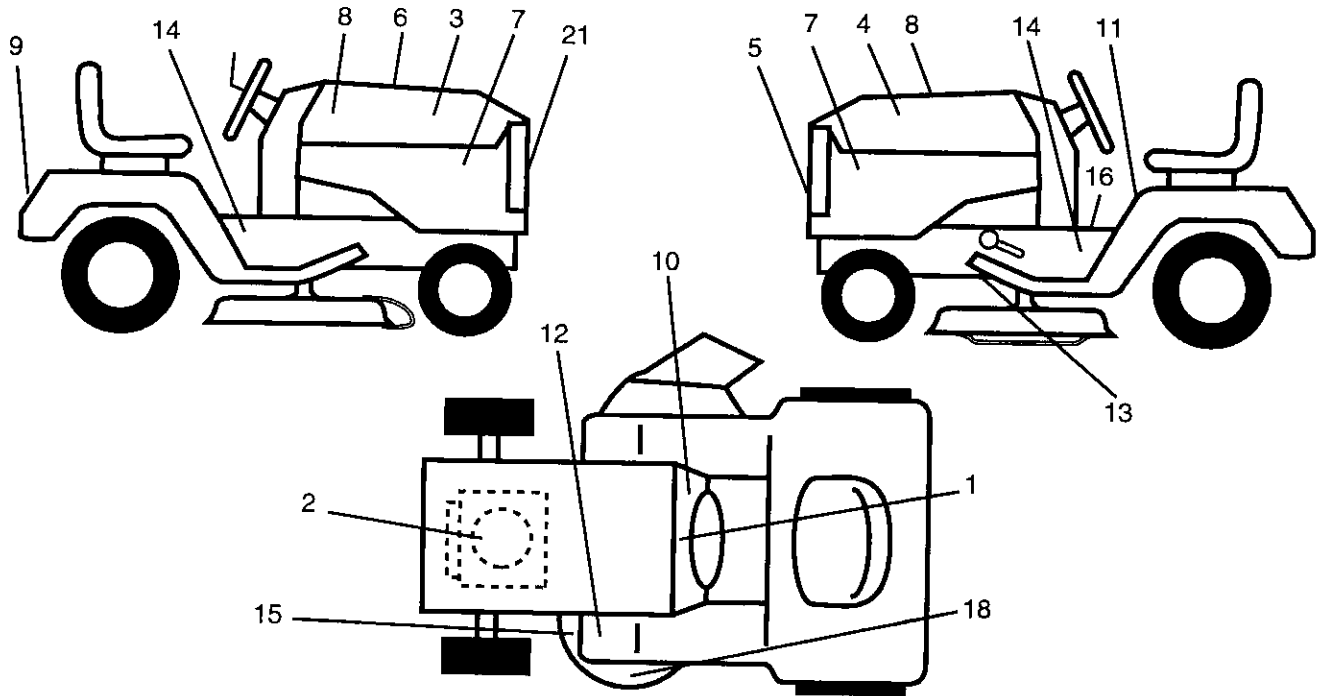
KEY NO.	PART NO.	DESCRIPTION	KEY NO.	PART NO.	DESCRIPTION
1	127437	Seat V350 Blk/blk Craftsman	14	72050411	Bolt Rdhd Sht Nk 1/4-20x1-3/8
2	140551	Bracket Pnt Pivot Seat (blk )	15	134300	Spacer Split 28 X 96 Zinc
3	STD523710	Bolt Fin Hex 3/8-16unc X 1	16	121250X	Spring Cprsn 1 27 Blk Pnt
4	19131610	Washer 13/32 X 3/4 X 10 Ga	17	123976X	Nut Lock 1/4 Lge Flg Gr 5 Zinc
5	140407	Clip Push In .375 x .250	21	139888	Bolt Shoulder 5/16-18 Unc Blkz
6	STD541437	Nut Crownlock 3/8-16 Unc	22	STD541431	Nut Crown Lock 5/16-18
7	124181X	Spring Seat Cprsn 2 250 Blk Zi	23	74780814	Bolt Fin Hex 1/2-13 X 7/8 Gr 5
8	17490616	Screw Thdrol 3/8-16 X 1 Ty-tt	24	19171912	Washer 17/32 X 1-3/16 X 12 Ga
9	19131614	Washer 13/32 X 1 X 14 Ga	25	127018X	Bolt Shoulder 5/16-18 X 62
10	140552	Pan Pnt Seat (blk )	26	STD551150	Washer Lock Hvy Hlcl Spr 1/2
12	121246X	Bracket Pnt Mounting Switch			
13	121248X	Bushing Snap Blk Nyl 50 Id			

**NOTE:** All component dimensions given in U.S. inches.  
1 inch = 25.4 mm

# REPAIR PARTS

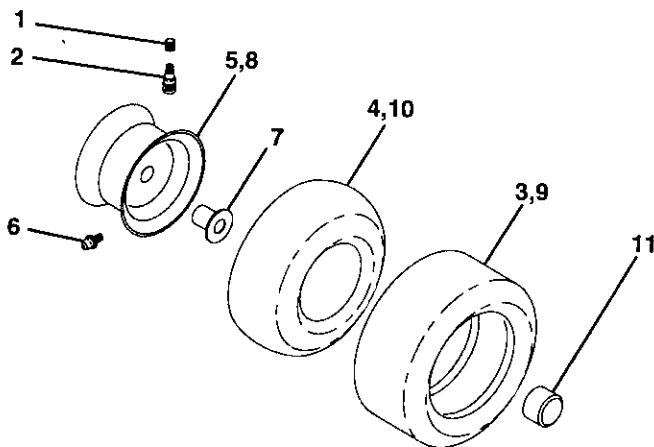
## 12.5 HP 38" TRACTOR -- MODEL NUMBER 917.257621

### DECALS



KEY NO.	PART NO.	DESCRIPTION	KEY NO.	PART NO.	DESCRIPTION
1	138955	Decal Instruction Operat Eng	11	137537	Decal Caution English/Spanis
2	138653	Decal B&S IC/G HV Craftsman	12	4900J	Decal Clutch/brake English
3	140560	Decal Hood Slope Rh Craftsman	13	109199X	Decal V-belt Dr Sch Tractor E
4	140561	Decal Hood Slope Lh Craftsman	14	105809X	Decal Chassis 5 Sp 38"
5	132674	Decal Grille Lt4000 Craft Usa	15	136832	Decal Mower Drive Schematic 38
6	133644	Decal Maint Customer Sears Dom	16	140837	Decal, Brake Parking Saddle
7	142249	Decal Panel Side I/c Gold/blk	17	132267	Decal, Insrt. Strg WH Crafts USA
8	142252	Decal Insert Hood Blk	18	133179	Decal Mower Qc System
9	125880X	Decal Fender Craftsman Red	21	131265	Decal Lightbox
10	138836	Decal Dash Slope Lt	--	138311	Decal Lift Handle
			--	142374	Manual, Owner's (English)
			--	142375	Manual, Owner's (Spanish)

### WHEELS & TIRES



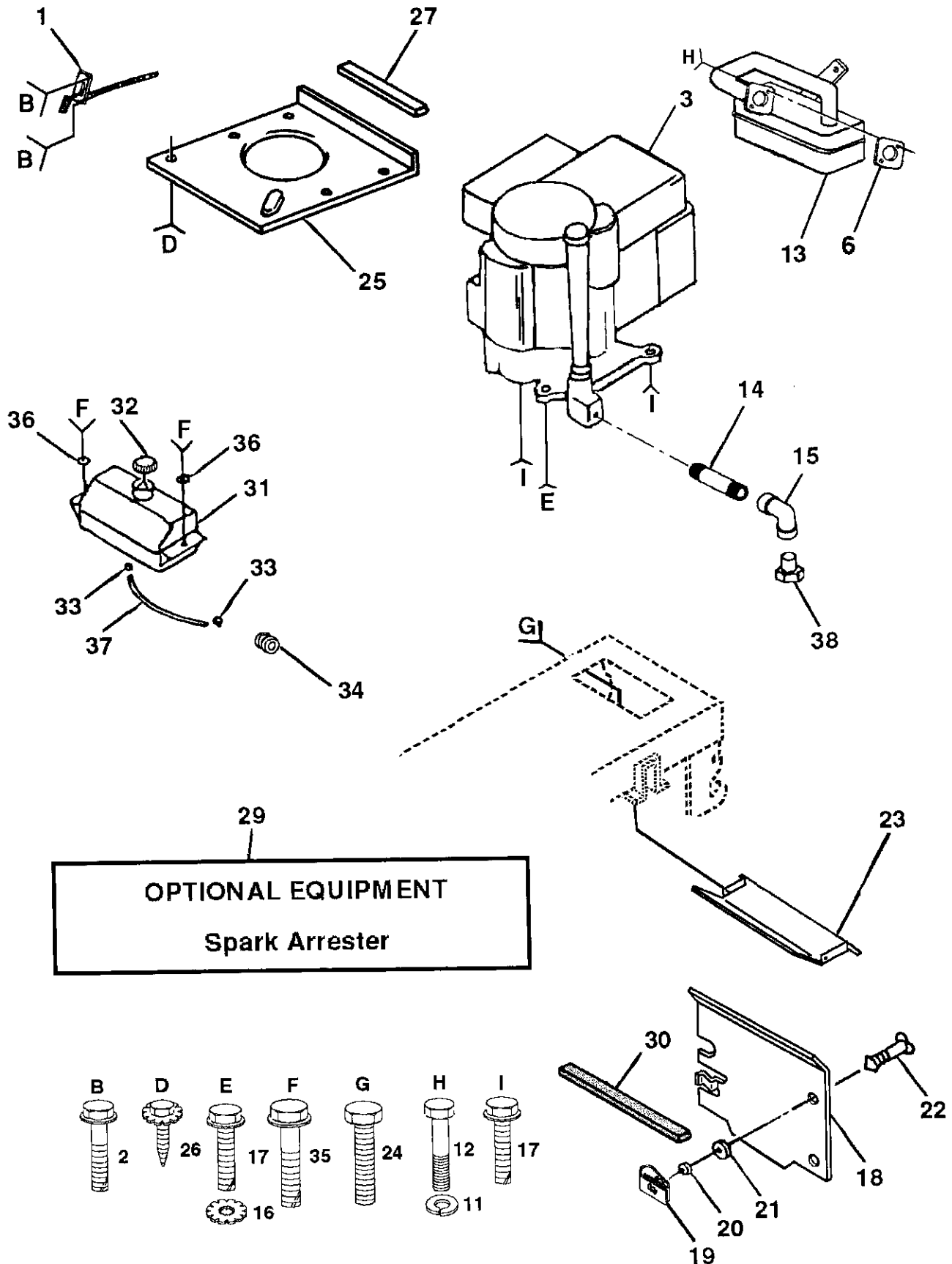
KEY NO.	PART NO.	DESCRIPTION
1	59192	Cap Value Tire
2	65139	Stem Value
3	106222X	Tire F Ts 15 X 6 0 - 6 Service
4	59904	Tube Inner Front #35060
5	106732X417	Rim Asm 6"front Silver Service
6	278H	Fitting Grease
7	9040H	Bearing Flange
8	106108X417	Rim Asm 8"rear Silver Service
9	124635X	Tire R Ts 18x8 5-8 Service
10	7152J	Tube Rear 9 5 X 8 Service
11	104757X	Cap Axle Bik 1 50 X 1 00

**NOTE:** All component dimensions given in U.S. inches.  
1 inch = 25.4 mm

# REPAIR PARTS

12.5 HP 38" TRACTOR - - MODEL NUMBER 917.257621

## ENGINE



# REPAIR PARTS

## 12.5 HP 38" TRACTOR - - MODEL NUMBER 917.257621

### ENGINE

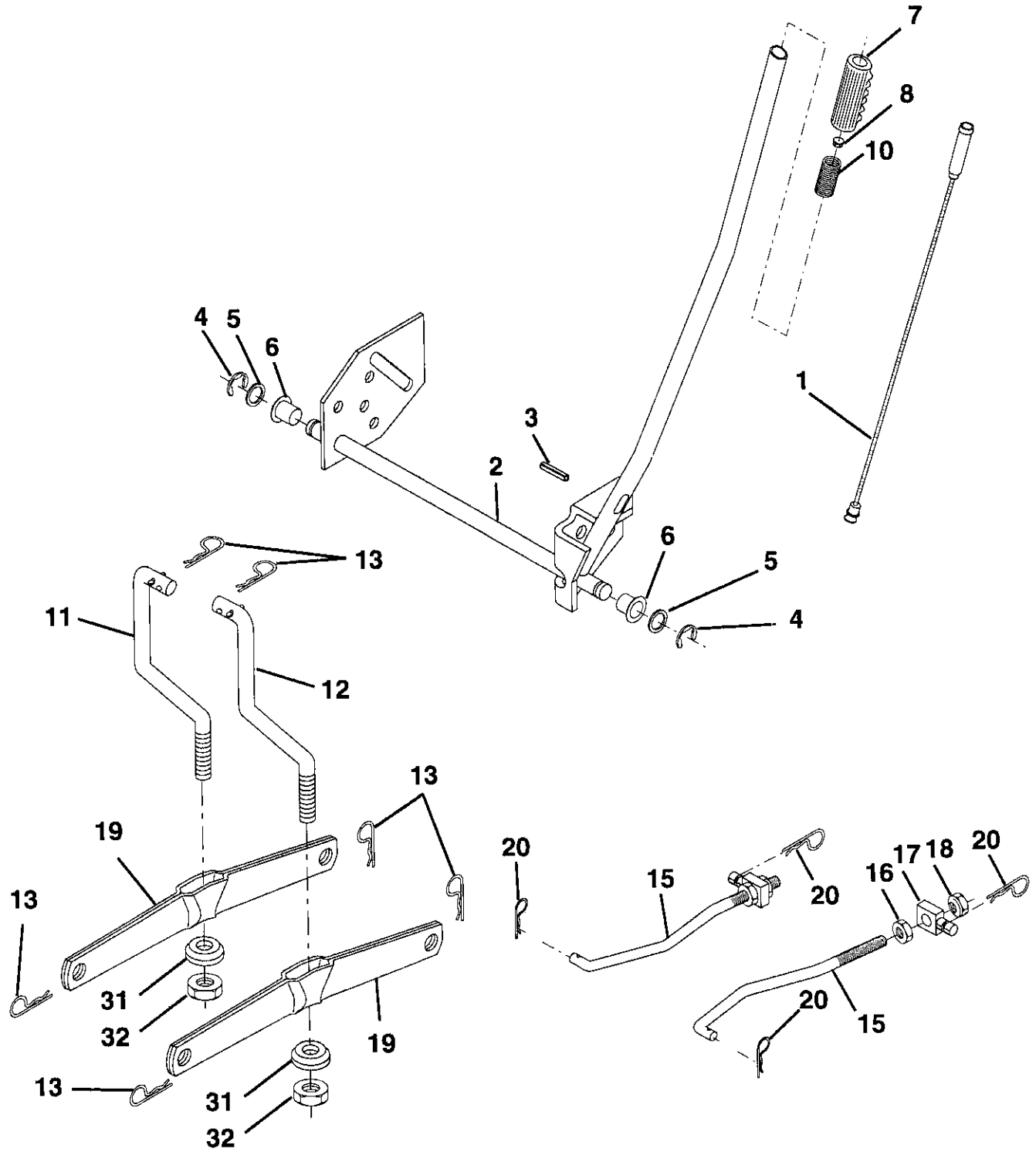
KEY NO.	PART NO.	DESCRIPTION
1	132759	Control Throt Rh Blk Pdl 15 10
2	17720410	Screw Hex Thd Cut 1/4-20x5/8 T
3	137425	Engine B&s ICQ Dual 1 Vt, Model No. 289707, Type No. 0121-01
6	125593X	Gasket 1 313 Id Tin Plated
11	STD551131	Washer Lock Hvy Hlcl Spr 5/16
12	71070512	Screw Hexhd Cap 5/16-18x3/4
13	137348	Muffler Exhaust B&s Lt
14	13280324	Nipple Pipe 3/8 Npt X 3"
15	13200300	Elbow Std 90 Degree 3/8-18 Npt
16	STD551237	Washer Lock Ext Tooth 3/8
17	17490620	Screw Thdrol 3/8-16x1-1/4 Tytt
18	136718	Shield Pnt Heat
19	105839X	Receptacle 1/4 Turn Dacrotized
20	105838X	Retainer 1/4 Turn 365odx 222id
21	STD551025	Washer 9/32 X 5/8 X 16 Ga
22	123650X	Stud 1/4 Turn (replaces 105751
23	128953	Shield Pnt Heat Browning Grass
24	STD601005	Screw Tap Hex #10-24unc X 1/2
25	124027X	Shield Pnt Heat Hood Lt
26	17030808	Screw Spiderloc Hexhd#8x1/2 Ab
27	105037X	Strip Foam 18"
29	137180	Arrestor Spark
30	127057X	Pinch Weld Hood Black 2.00
31	109202X	Tank Fuel 1 25 Fr
32	123549X	Cap Asm Fuel W/sym Vented
33	123487X	Clamp Hose Blk
34	124028X	Bushing Snap Nyl Blk Fuel Line
35	17490412	Screw Hexwsh Thdrol 1/4-20x3/4
36	19091416	Washer 9/32 X 7/8 X 16ga
37	137040	Line Fuel 20"
38	---	Plug Oil Drain (Order From Engine Manufacturer)

**NOTE:** All component dimensions given in U.S. inches  
1 inch = 25.4 mm

# REPAIR PARTS

12.5 HP 38" TRACTOR - - MODEL NUMBER 917.257621

LIFT



# REPAIR PARTS

12.5 HP 38" TRACTOR -- MODEL NUMBER 917.257621

## LIFT

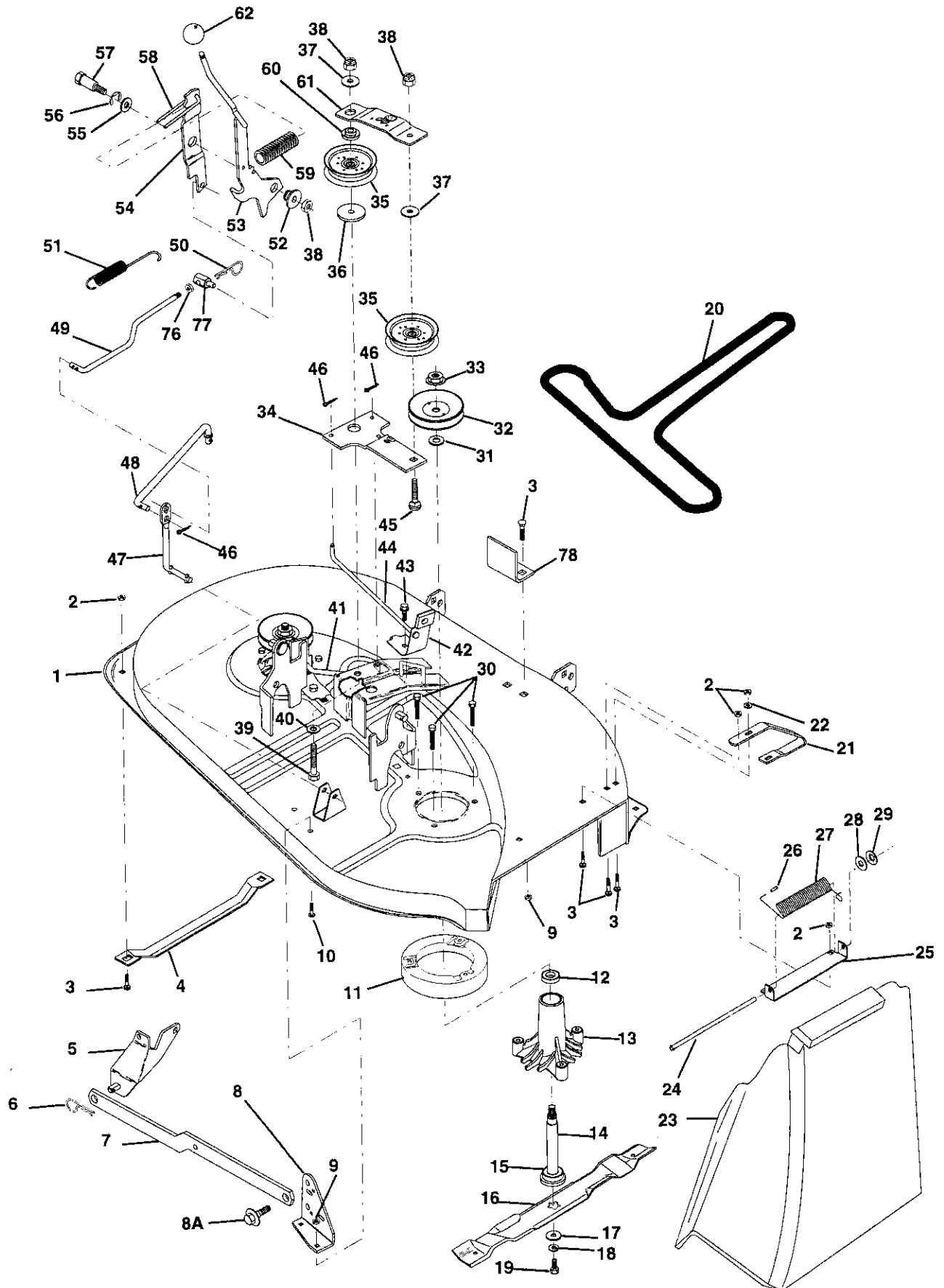
KEY NO.	PART NO.	DESCRIPTION
1	136973	Rod Asm. Lever
2	122507X	Shaft Asm. Lift
3	105767X	Pin Groove
4	12000002	E Ring #5133-62
5	19211621	Washer 21/32 x 1 x 21 Ga.
6	120183X	Bearing Nylon
7	125631X	Grip Handle Fluted
8	122365X	Button Plunger Read
10	122512X	Spring Cprsn
11	139865	Link Lift Lh Fixed Length
12	139866	Link Lift Rh Fixed Length
13	4939M	Retainer Spring
15	127218	Link Front
16	73350800	Nut Jam Hex 1/2-13 Unc
17	130171	Trunnion Blk Zinc
18	73800800	Nut Lock W/Wsh 1/2-13 Unc
19	139868	Arm Suspension Mower
20	3146R	Retainer Spring
31	140302	Bearing, Pvt. Lift. Spherical
32	73810600	Nut Lock 3/8-24 W/Nylon Insert

**NOTE:** All component dimensions given in U.S. inches  
1 inch = 25.4 mm

# REPAIR PARTS

12.5 HP 38" TRACTOR - - MODEL NUMBER 917.257621

38" MOWER





# REPAIR PARTS

## 12.5 HP 38" TRACTOR - - MODEL NUMBER 917.257621

### 38" MOWER

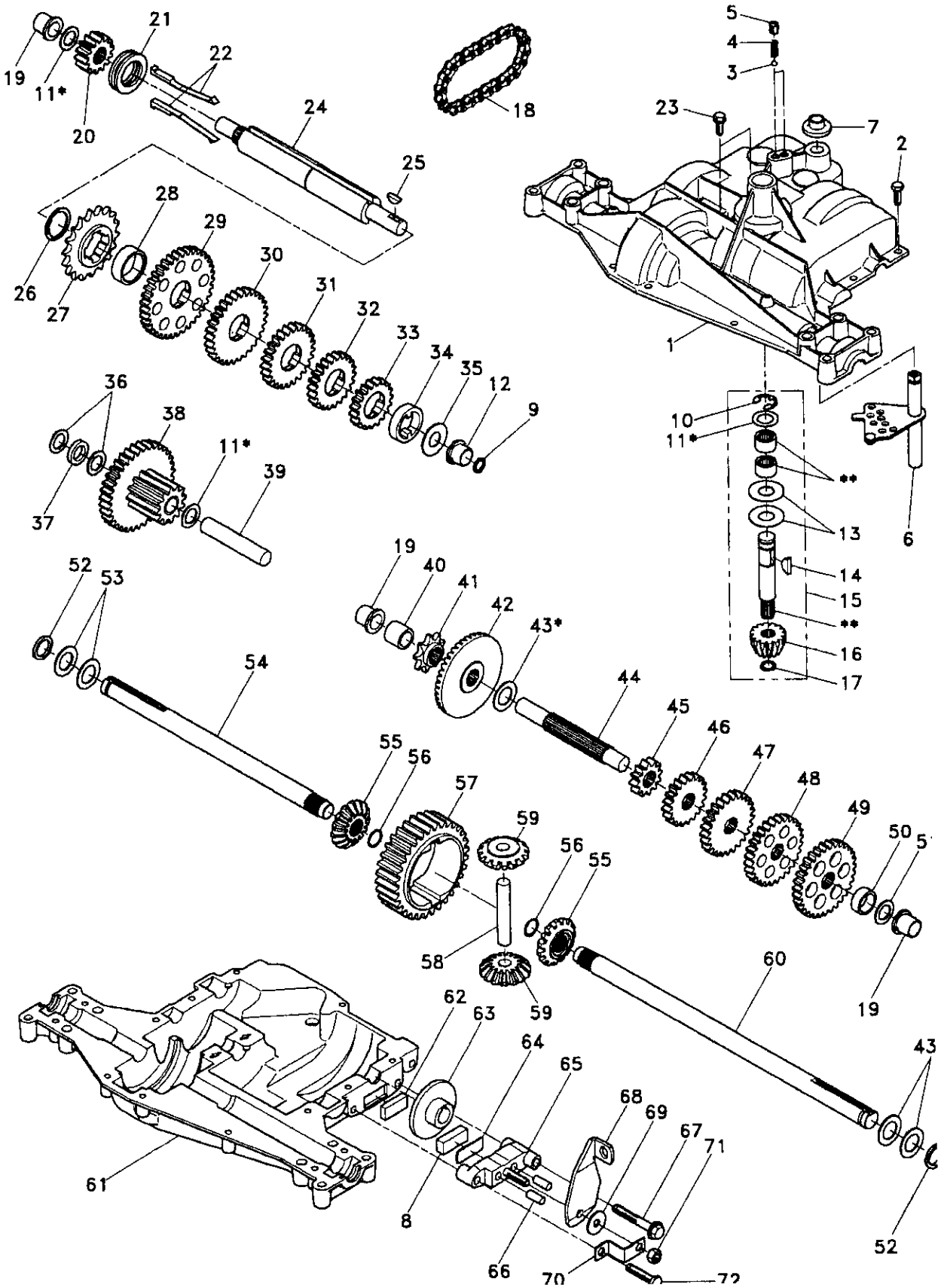
KEY NO.	PART NO.	DESCRIPTION	KEY NO.	PART NO.	DESCRIPTION
1	142829	Mower Housing Assembly	36	122052X	Spacer, Retainer 1-3/4
2	STD541431	Nut, Crownlock 5/16-18	37	19131612	Washer 13/32 x 1 x 12 Gauge
3	STD533107	Bolt, Carriage 5/16-18 x 3/4	38	STD541437	Nut, Crownlock 3/8-16
4	7631J	Runner, LH	39	74600636	Bolt, Hex Head 3/8-16 x 2-1/4
5	138017	Bracket Asm. Fram Sway Bar 38/42	40	19131612	Washer 13/32 x 1 x 12 Gauge
6	4939M	Retainer, Spring	41	131289	Rod, Brake, LH
7	130832	Asm. Suspension Rear	42	130840	Brake Assembly
8	138440	Bracket, Asm. Deck Sway Bar 38"	43	17490512	Screw, Hex Head, Thd., Roll. 5/16-18 x 3/4
8A	132827	Bolt, Shoulder	44	131288	Rod, Brake, RH
9	73800500	Locknut Hex w/insert 5/16 - 18 UNC	45	STD533717	Bolt, Carriage 3/8-16 x 1-3/4
10	72140506	Bolt, RdHd Sqnk 5/16-18 UNC x 3/4	46	STD560907	Pin, Cotter 3/32 x 3/4
11	140329	Stripper, Mower, Vented	47	133551	Rod, Pivot
12	110485X	Ball Bearing, Mandrel	48	133504	Rod, Clutch, Secondary
13	128774	Mandrel Housing, Vented	49	142427	Rod, Clutch, Primary
14	137645	Shaft and Bearing Assembly (Includes Key Number 15)	50	STD624003	Retainer, Spring
15	129895	Ball Bearing	51	131870	Spring, Return
16	134148	Blade, Mower, Mulching 38"	52	127498	Bushing
17	140296	Washer, Hard Blade Mower Vented	53	140334	Arm, Clutch, Primary
18	STD551137	Washer, Lock, Hvy Hlcl Spring 3/8	54	127847	Arm, Clutch, Secondary
19	850857	Bolt, Hex 3/8-24 x 1-1/4 Grade 8	55	121748X	Washer 25/32 x 1-5/8 x 16 Gauge
20	126520X	Belt	56	12000029	Ring, Klip
21	128772	Runner, RH	57	128903	Bolt, Shoulder
22	19111216	Washer 11/32 x 3/4 x 16 Gauge	58	127845	Keeper, Spring
23	106736X	Shield, Deflector	59	128759	Spring
24	106735X	Rod, Hinge	60	133502	Spacer, Retainer
25	137607	Bracket, Mower Deflector	61	133503	Stiffener, Idler Arm
26	105304X	Cap, Sleeve	62	106932X	Knob
27	123713X	Spring, Deflector	76	73350600	Nut Hex Jam 3/8-16 UNC
28	19111016	Washer 11/32 x 3/4 x 16 Gauge	77	142028	Trunnion Adj 94
29	110452X	Nut, Push	78	142587	Upstop Deck Front 38"
30	138776	Screw, Thdrol Hex Hd	--	130794	Mandrel Assembly (Includes Key Numbers 12-15, 17-19, 31 and 33)
31	129963	Washer, Spacer	--	142820	Mower Deck, Complete
32	129206	Pulley, Mandrel, Single			
33	137266	Nut, Flangelock 9/16			
34	133840	Idler Arm Assembly			
35	131494	Pulley, Idler, Flat			

**NOTE:** All component dimensions given in U.S. inches  
1 inch = 25.4 mm

# REPAIR PARTS

12.5 HP 38" TRACTOR - MODEL NUMBER 917.257621

DANA TRANSAXLE - MODEL NUMBER 4360-78



# REPAIR PARTS

## 12.5 HP 38" TRACTOR - MODEL NUMBER 917.257621

### DANA TRANSAXLE - MODEL NUMBER 4360-78

KEY PART NO.	NO.	DESCRIPTION	KEY PART NO.	NO.	DESCRIPTION
1	142671	Housing, Upper	41	105928X	Sprocket, 9 Teeth
2	2274J	Screw, Self-Tapping, Large 1/4-20 x .734	42	110084X	Gear, Bevel, 42 Teeth
3	134400	Ball, Detent	43	134394	* Assembly, Kit, Shim .750 Shaft
4	105904X	Spring, Detent	44	120473X	Shaft, Drive
5	105905X	Screw, Set	45	142678	Gear, Spur, 12 Teeth
6	138235	Kit, Shifter Assembly	46	120407X	Gear, Spur, 20 Teeth
7	134399	Boot, Shifter	47	106589X	Gear, Spur, 25 Teeth
8	120951X	Puck, Friction	48	120408X	Gear, Spur, 28 Teeth
9	143045	Seal, Oil	49	105937X	Gear, Spur, 31 Teeth
10	142672	Ring, Retaining	50	105936X	Spacer .781 x 1.00 x .375
11	134793	* Assembly, Kit, Shim .625 Shaft	51	2226J	Washer, Plain .632 x 1.00 x .060
12	143051	Bearing, Flange	52	134401	Washer, Neoprene
13	120415X	Washer, Plain .632 x 1.38 x .046	53	2264J	Washer, Plain .758 x 1.25 x .031
14	142674	Key, Woodruff, #9	54	120474X	Axle, L.H.
15	138234	Assembly, Kit, Input Shaft	55	110081X	Gear, Miter, 15 Teeth
16	110078X	Pinion, Bevel, 14 Teeth	56	105941X	Ring, Retaining
17	105909X	Ring, Retaining	57	110071X	Gear, Spur, 32 Teeth
18	105910X	Chain, 24 Pitches	58	120952X	Shaft, Cross
19	105911X	Bearing, Flange	59	110082X	Gear, Miter, 15 Teeth
20	142675	Gear, Spur, 14 Teeth	60	120475X	Axle, R.H.
21	138246	Collar, Clutch	61	142680	Housing, Lower
22	138236	Assembly, Kit, Clutch Keys	62	120961X	Puck, Friction
23	134791	Screw, Tapping w/Sealer	63	7294J	Disc, Brake
24	142676	Shaft, Intermediate	64	108989X	Spacer
25	2244J	Key, Woodruff, #61	65	120953X	Jaw, Brake
26	105916X	Ring, Retaining	66	120954X	Pin, Dowel
27	120470X	Sprocket, 18 Teeth	67	134799	Screw, Self-Tapping, Large 5/16-18 x 2.25
28	110070X	Spacer	68	138244	Lever, Actuating
29	142677	Gear, Spur, 37 Teeth	69	108996X	Washer, Plain .321 x 1.00 x .055
30	120405X	Gear, Spur, 30 Teeth	70	120956X	Bracket, Anti-Rotation
31	108980X	Gear, Spur, 25 Teeth	71	73810500	Locknut 5/16-24
32	120406X	Gear, Spur, 22 Teeth	72	106596X	Screw, Self-Tapping, Large 5/16-18 x 1.44
33	134796	Gear, Spur, 19 Teeth	73	120416X	Grease
34	134797	Spacer 1.133 x 1.50 x .375			
35	105925X	Washer, Plain .640 x 1.37 x .061			
36	2232J	Washer, Plain .632 x 1.00 x .026			
37	108978X	Spacer .630 x 1.00 x .169			
38	110079X	Assembly, Gear, Combination of 12 Teeth and 35 Teeth			
39	124639X	Shaft, Idler			
40	120472X	Spacer .635 x .875 x .755			

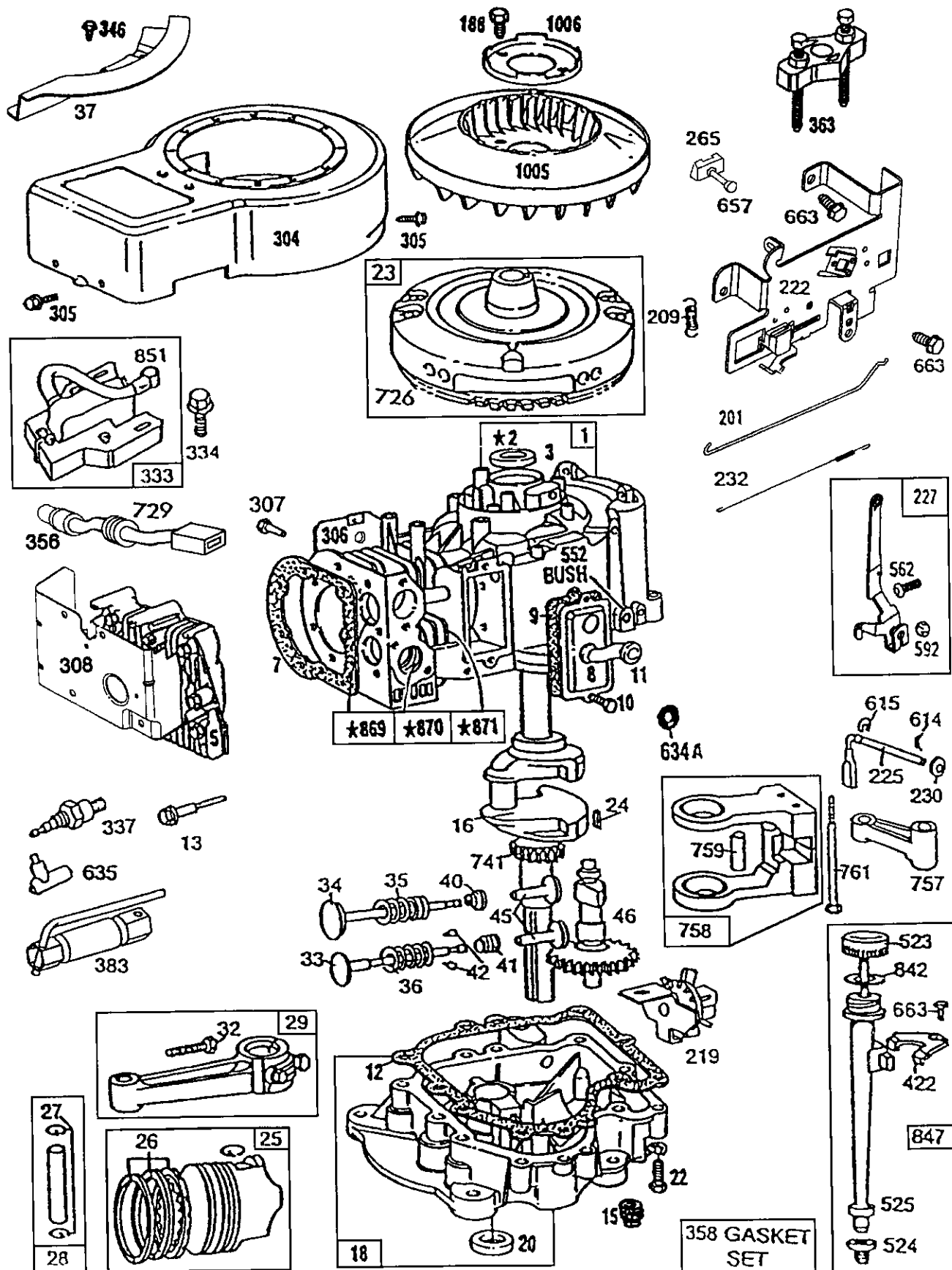
\* Use in combinations to maintain proper clearances  
 \*\* Order Key No. 15

**NOTE:** All component dimensions given in U.S. inches  
 1 inch = 25.4 mm

# REPAIR PARTS

12.5 HP 38" TRACTOR - - MODEL NUMBER 917.257621

BRIGGS & STRATTON ENGINE - MODEL NUMBER 289707, TYPE NUMBER 0130-01

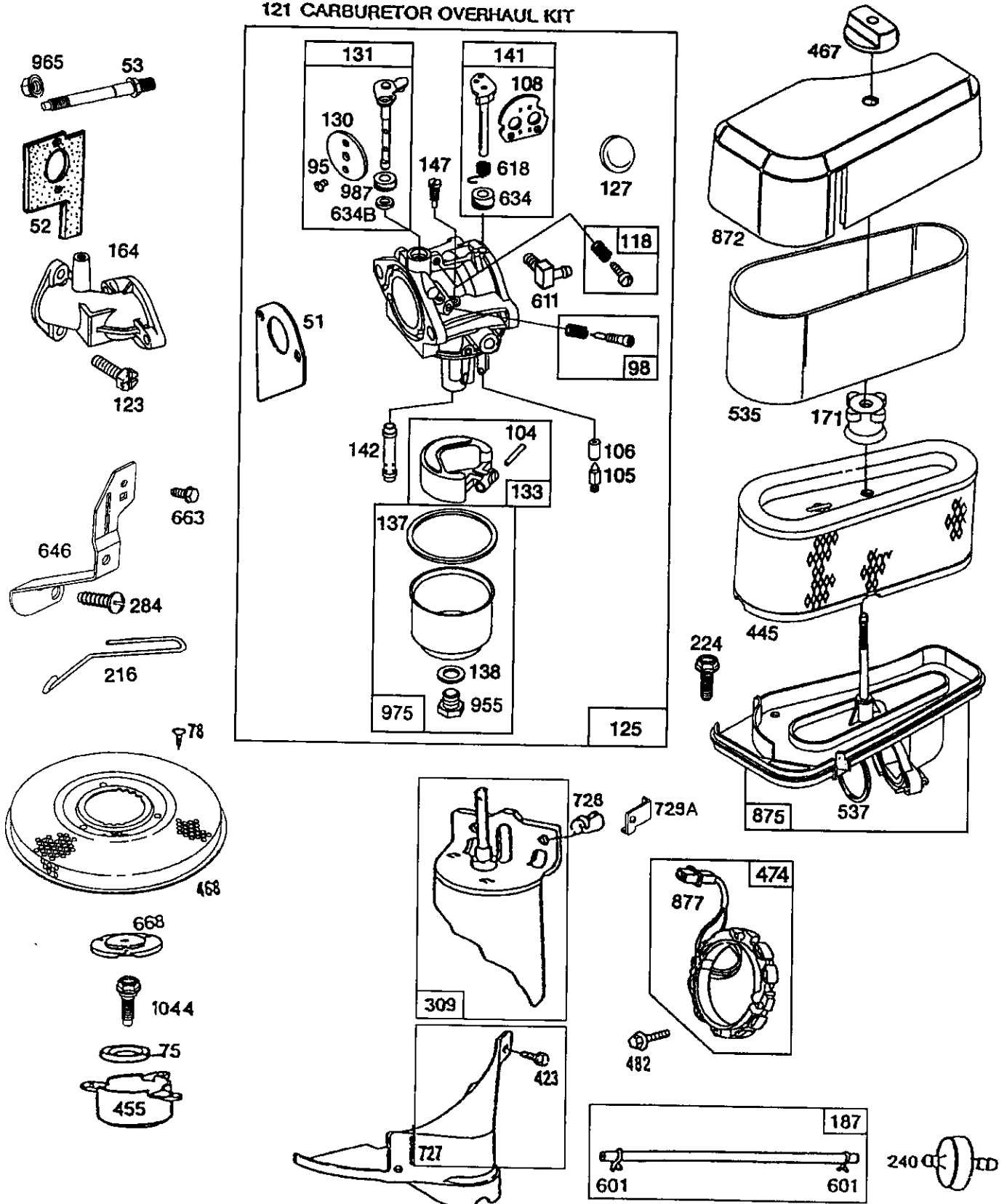


# REPAIR PARTS

12.5 HP 38" TRACTOR - - MODEL NUMBER 917.257621

BRIGGS & STRATTON ENGINE - MODEL NUMBER 289707, TYPE NUMBER 0130-01

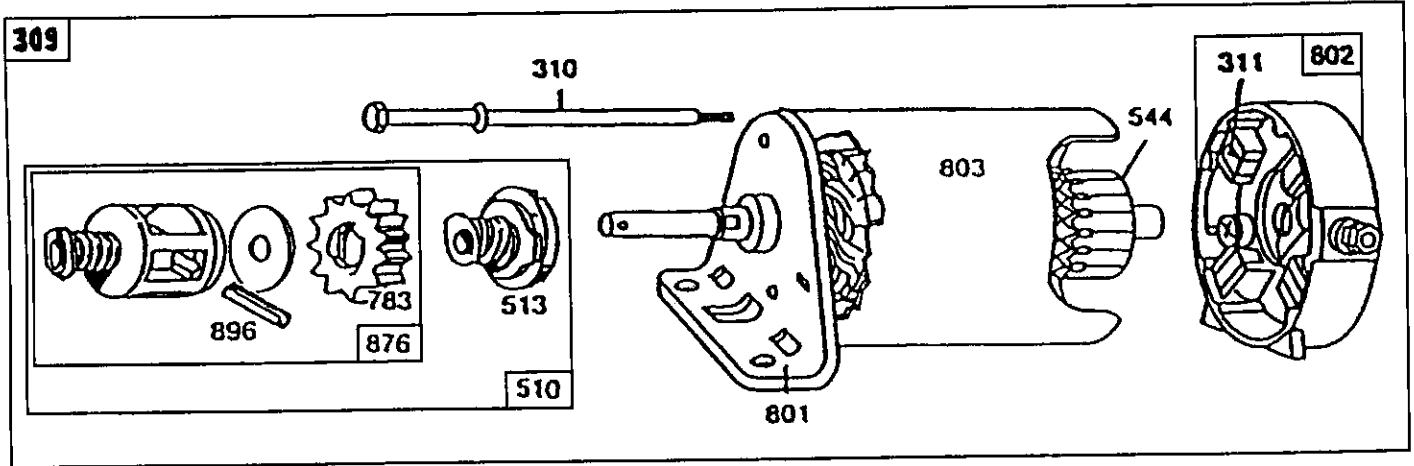
## 121 CARBURETOR OVERHAUL KIT



# REPAIR PARTS

12.5 HP 38" TRACTOR - - MODEL NUMBER 917.257621

BRIGGS & STRATTON ENGINE - MODEL NUMBER 289707, TYPE NUMBER 0130-01



Reference Number	309	310	311	510	544	801	802	803
Manufacturer	Motor and Drive Ass'y.	Thru Bolt Assembly	Brush Assembly	Drive Assembly	Armature Assembly	Drive End Cap Assembly	End Cap Ass'y. Commutator	Housing Assembly
Briggs & Stratton								
12V	3-21/32"							
	394805	94003	395538	490421**	390837	394856	395537*	398159

\*Includes Brush Set

\*\*Includes #398003 Clutch Assembly (Ref. No. 513)  
 #280104 Gear (Ref. No. 783)  
 #490467 Retainer and Pin (Ref. No. 876)  
 # 94288 Roll Pin (Ref. No. 896)

# REPAIR PARTS

## 12.5 HP 38" TRACTOR - - MODEL NUMBER 917.257621

### BRIGGS & STRATTON ENGINE - MODEL NUMBER 289707, TYPE NUMBER 0130-01

KEY PART NO.	NO.	DESCRIPTION	KEY PART NO.	NO.	DESCRIPTION
1	490450	Cylinder Assembly	46	212897	Gear, Cam
2	399265	Bearing, Cylinder (Requires Special Tools For Installation)	51	272465	*** Gasket, Carburetor (Carburetor to Elbow)
3	391086	* Seal, Oil	52	272554	* Gasket, Carburetor Stud, Carburetor Mounting
5	494240	Head, Cylinder	53	94637	Washer, Spring
7	271866	* Gasket, Cylinder Head Breather Assembly	75	224061	Screw, Sems
8	391406	* Gasket, Valve Cover	78	93805	** Screw, Throttle
9	27803	Screw, Sems	95	94098	Screw, Idle Speed
10	94621	Tube, Breather	98	495800	** Pin, Float Hinge
11	280100	* Gasket, Crankcase Cover 1/64"	104	231789	** Valve Assembly, Inlet Needle
12	271916	* Gasket, Crankcase Cover .005"	105	231855	Inlet, Valve Seat
	271997	* Gasket, Crankcase Cover .009"	106	231854	Valve, Choke
	271996	Screw, Cylinder Head	108	224540	** Valve, Needle
13	94622	Plug, Oil Drain	118	494383	Carburetor Overhaul Kit
15	94239	Crankshaft	121	495799	Screw, Elbow Mounting
16	495162	Key, Timing Gear	123	94616	Carburetor Assembly
	94196	Base, Engine	125	495706	** Plug, Welch (Sold in Kit Only)
18	494238	* Seal, Oil	127	- - -	Valve, Throttle
20	291675	Screw, Sems, Base Mounting	130	224539	Shaft and Lever, Throttle
22	94624	Flywheel and Ring Gear Assembly, Magneto	131	494379	Float, Carburetor
23	492326	Key, Flywheel	133	494381	*** Gasket, Float Bowl
24	222698	Piston Assembly, Standard	137	281165	*** Washer, Float Bowl Screw
25	394661	Piston Assembly .010" Oversize	138	281164	** Shaft and Lever, Choke
	394662	Piston Assembly .020" Oversize	141	494380	** Nozzle / Jet, Carburetor
	394663	Piston Assembly .030" Oversize	142	494537	** Pilot, Jet
	394664	Ring Set, Piston, Standard Size	147	231794	Carburetor, Elbow
26	391780	Ring Set, Piston, Chrome, Standard	164	213819	Nut, Air Cleaner Mounting
	392331	Ring Set, Piston .010" Oversize	171	281051	Line, Fuel
	391781	Ring Set, Piston .020" Oversize	187	393815	Screw, Sems
	391782	Ring Set, Piston .030" Oversize	188	93535	Link, Governor
	391783	Lock, Piston Pin	201	262767	Spring, Governor
27	260924	Pin Assembly, Piston, Standard	209	260871	Link, Choke
28	299691	Pin Assy., Piston .005" Oversize	216	262766	Oil Slinger, Governor Gear and Bracket Assembly
	391286	Rod Assembly, Connecting	219	490815	Plate, Governor Control
29	490348	Rod Assembly, Connecting, .020" Undersize Crankpin Bore	222	494887	Screw, Sems, Air Cleaner
	490469	Screw, Connecting Rod	224	94513	Crank, Governor
32	94671	Valve, Exhaust	225	231058	
33	262246	Valve, Intake			* Included in Gasket Set (494241)
34	262247	Spring, Intake Valve			** Included in Carburetor Overhaul Kit (495799)
35	65906	Spring, Exhaust Valve			*** Included in both Carburetor Overhaul Kit (495799) and Carburetor Gasket Set (494385)
36	26828	Guard, Flywheel			
37	224502	Retainer, Intake Valve			
40	221596	Rotocoil, Exhaust Valve			
41	292260	Retainer, Exhaust Valve Rotocoil			
42	93630	Tappet, Valve			
45	262248				

**NOTE:** All component dimensions given in U.S. inches  
1 inch = 25.4 mm

# REPAIR PARTS

12.5 HP 38" TRACTOR - - MODEL NUMBER 917.257621

BRIGGS & STRATTON ENGINE - MODEL NUMBER 289707, TYPE NUMBER 0130-01

KEY PART NO.	NO.	DESCRIPTION	KEY PART NO.	NO.	DESCRIPTION
227	493935	Lever Assembly, Governor	635	66538	Elbow, Spark Plug
230	94742	Washer, Governor Crank	646	224546	Brace, Air Cleaner
232	262785	Spring, Governor Link	657	93496	Screw, Sems
240	394358	Filter, Fuel	663	94620	Screw, Hex Head
265	221535	Clamp, Casing	668	280848	Spacer
284	94326	Screw, Air Cleaner	726	392134	Gear, Ring
304	494269	Housing, Blower			(Includes Mounting Parts)
305	94619	Screw, Sems, Blower Housing Mounting	727	490324	Cover, Starter
					(Includes Mounting Screws)
306	224545	Shield, Cylinder	728	94627	Screw, Sems
307	94623	Screw, Sems, Cylinder Shield Mounting	729	281159	Clip, Lead Wire
			729A	224723	Retainer Wire
308	491490	Cover, Cylinder Head	741	262135	Gear, Timing
309	---	Motor, Starting (See Chart on Illustrated Pages for Replacement Parts for Starting Motors)	757	212359	Link, Counterweight
			758	399891	Counterweight Assembly
			759	298909	Pin, Counterweight
333	492341	Armature, Magneto	761	93875	Screw, Counterweight
334	93381	Screw, Sems, Armature Mounting	842	270920	Seal, Oil Filler Cap
337	802592	Plug, Spark	847	490474	Fill Group, Oil
346	93705	Screw, Hex Head	851	221798	Terminal, Ignition Cable
356	494328	Wire, Ground	869	261463	Seat, Intake Valve, Standard
358	494241	Gasket Set	870	213316	Seat, Exhaust Valve, Standard
363	19203	Puller, Flywheel	871	261961	Guide, Exhaust Valve
383	89838	Wrench, Spark Plug		231218	Guide, Intake Valve
422	223721	Clamp, Oil Filler Tube	872	281104	Cover, Air Cleaner
423	94073	Screw, Sems	875	494237	Body, Air Cleaner
445	493909	Cartridge, Air Cleaner	877	393456	Diode and Connector Assembly, Dual Circuit
455	222561	Cup, Screen Mounting			** Screw, Fuel Bowl
467	493903	Knob, Air Cleaner	955	94642	Locknut, Air Cleaner Mounting
468	222562	Screen, Flush Rotating	965	94108	Bowl Assembly, Carburetor
474	393474	Stator, Alternator	975	494378	Carburetor Gasket Kit
482	93621	Screw, Sems	977	494385	** Seal, Throttle Shaft
523	490327	Cap and Dipstick, Oil Filler	987	281166	Fan, Flywheel
524	68838	Seal, Filler Tube	1005	280687	Retainer, Fan
525	280741	Tube, Oil Filler	1006	224413	Label Kit
535	272403	Element, Air Cleaner	1019	491255	Screw, Hex Head
537	281106	* O-Ring, Air Cleaner	1044	94673	
552	231597	Bushing, Governor Crank			RPM Settings: Low: 1550-1950, High: 3200-3400
562	92613	Bolt, Governor Lever			* Included in Gasket Set (494241)
592	231082	Nut, Hex			** Included in Carburetor Overhaul Kit (495799)
601	93053	Clamp, Fuel Pipe			*** Included in both Carburetor Overhaul Kit (495799) and Carburetor Gasket Set (494385)
611	494451	Fuel Inlet Tube			
614	93306	Cotter, Hair Pin			
615	93307	Retainer, E-Ring			
618	262803	Spring, Choke Return			
634	281168	** Seal, Choke Shaft			
634A	491323	* Seal, Governor			
634B	281167	** Washer, Throttle Shaft			

**NOTE:** All component dimensions given in U.S. inches  
1 inch = 25.4 mm