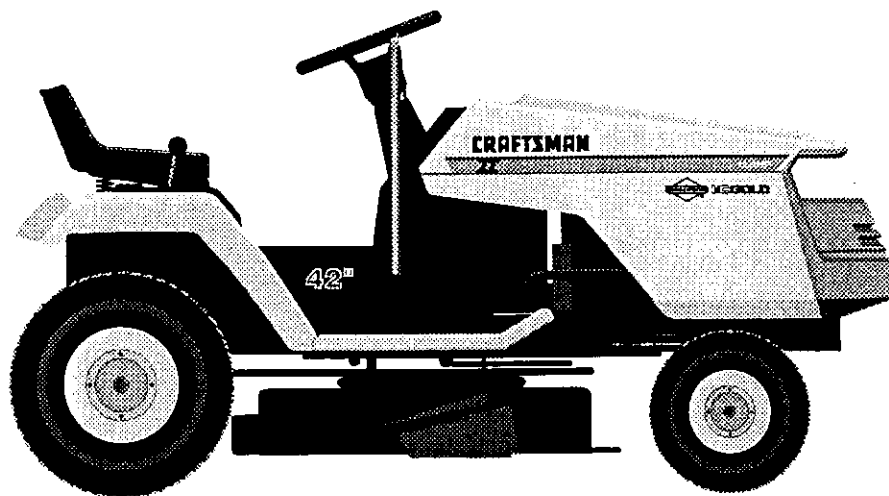


SEARS

CRAFTSMAN[®]

MODEL NUMBER 917.257690 OWNER'S MANUAL

- **Assembly**
- **Operation**
- **Customer Responsibilities**
- **Service and Adjustments**
- **Repair Parts**



CAUTION: Read and follow all safety rules and instructions before operating this equipment.

Sears, Roebuck and Co., Hoffman Estates, IL 60179 U.S.A.



SAFETY RULES

Safe Operation Practices for Ride-On Mowers



IMPORTANT: THIS CUTTING MACHINE IS CAPABLE OF AMPUTATING HANDS AND FEET AND THROWING OBJECTS. FAILURE TO OBSERVE THE FOLLOWING SAFETY INSTRUCTIONS COULD RESULT IN SERIOUS INJURY OR DEATH.

I. GENERAL OPERATION

- Read, understand, and follow all instructions in the manual and on the machine before starting.
- Only allow responsible adults, who are familiar with the instructions, to operate the machine.
- Clear the area of objects such as rocks, toys, wire, etc., which could be picked up and thrown by the blade.
- Be sure the area is clear of other people before mowing. Stop machine if anyone enters the area.
- Never carry passengers.
- Do not mow in reverse unless absolutely necessary. Always look down and behind before and while backing.
- Be aware of the mower discharge direction and do not point it at anyone. Do not operate the mower without either the entire grass catcher or the guard in place.
- Slow down before turning.
- Never leave a running machine unattended. Always turn off blades, set parking brake, stop engine, and remove keys before dismounting.
- Turn off blades when not mowing.
- Stop engine before removing grass catcher or unclogging chute.
- Mow only in daylight or good artificial light.
- Do not operate the machine while under the influence of alcohol or drugs.
- Watch for traffic when operating near or crossing roadways.
- Use extra care when loading or unloading the machine into a trailer or truck.

II. SLOPE OPERATION

Slopes are a major factor related to loss-of-control and tipover accidents, which can result in severe injury or death. All slopes require extra caution. If you cannot back up the slope or if you feel uneasy on it, do not mow it.

DO:

- Mow up and down slopes, not across.
- Remove obstacles such as rocks, tree limbs, etc.
- Watch for holes, ruts, or bumps. Uneven terrain could overturn the machine. *Tall grass can hide obstacles.*
- Use slow speed. Choose a low gear so that you will not have to stop or shift while on the slope.
- Follow the manufacturer's recommendations for wheel weights or counterweights to improve stability.
- Use extra care with grass catchers or other attachments. These can change the stability of the machine.
- Keep all movement on the slopes *slow* and *gradual*. Do not make sudden changes in speed or direction.
- Avoid starting or stopping on a slope. If tires lose traction, disengage the blades and proceed slowly *straight* down the slope.

DO NOT:

- *Do not* turn on slopes unless necessary, and then, turn slowly and gradually downhill, if possible.
- *Do not* mow near drop-offs, ditches, or embankments. The mower could suddenly turn over if a wheel is over the edge of a cliff or ditch, or if an edge caves in.
- *Do not* mow on wet grass. Reduced traction could cause sliding.
- *Do not* try to stabilize the machine by putting your foot on the ground.
- *Do not* use grass catcher on steep slopes.

III. CHILDREN

Tragic accidents can occur if the operator is not alert to the presence of children. Children are often attracted to the machine and the mowing activity. *Never* assume that children will remain where you last saw them.

- Keep children out of the mowing area and under the watchful care of another responsible adult.
- Be alert and turn machine off if children enter the area.
- Before and when backing, look behind and *down* for small children.
- Never carry children. They may fall off and be seriously injured or interfere with safe machine operation.
- Never allow children to operate the machine.
- Use extra care when approaching blind corners, shrubs, trees, or other objects that may obscure vision.

IV. SERVICE

- Use extra care in handling gasoline and other fuels. They are flammable and vapors are explosive.
 - Use only an approved container.
 - Never remove gas cap or add fuel with the engine running. Allow engine to cool before refueling. Do not smoke.
 - Never refuel the machine indoors.
 - Never store the machine or fuel container inside where there is an open flame, such as a water heater.
- Never run a machine inside a closed area.
- Keep nuts and bolts, especially blade attachment bolts, tight and keep equipment in good condition.
- Never tamper with safety devices. Check their proper operation regularly.
- Keep machine free of grass, leaves, or other debris build-up. Clean oil or fuel spillage. Allow machine to cool before storing.
- Stop and inspect the equipment if you strike an object. Repair, if necessary, before restarting.
- Never make adjustments or repairs with the engine running.
- Grass catcher components are subject to wear, damage, and deterioration, which could expose moving parts or allow objects to be thrown. Frequently check components and replace with manufacturer's recommended parts, when necessary.
- Mower blades are sharp and can cut. Wrap the blade(s) or wear gloves, and use extra caution when servicing them.
- Check brake operation frequently. Adjust and service as required.



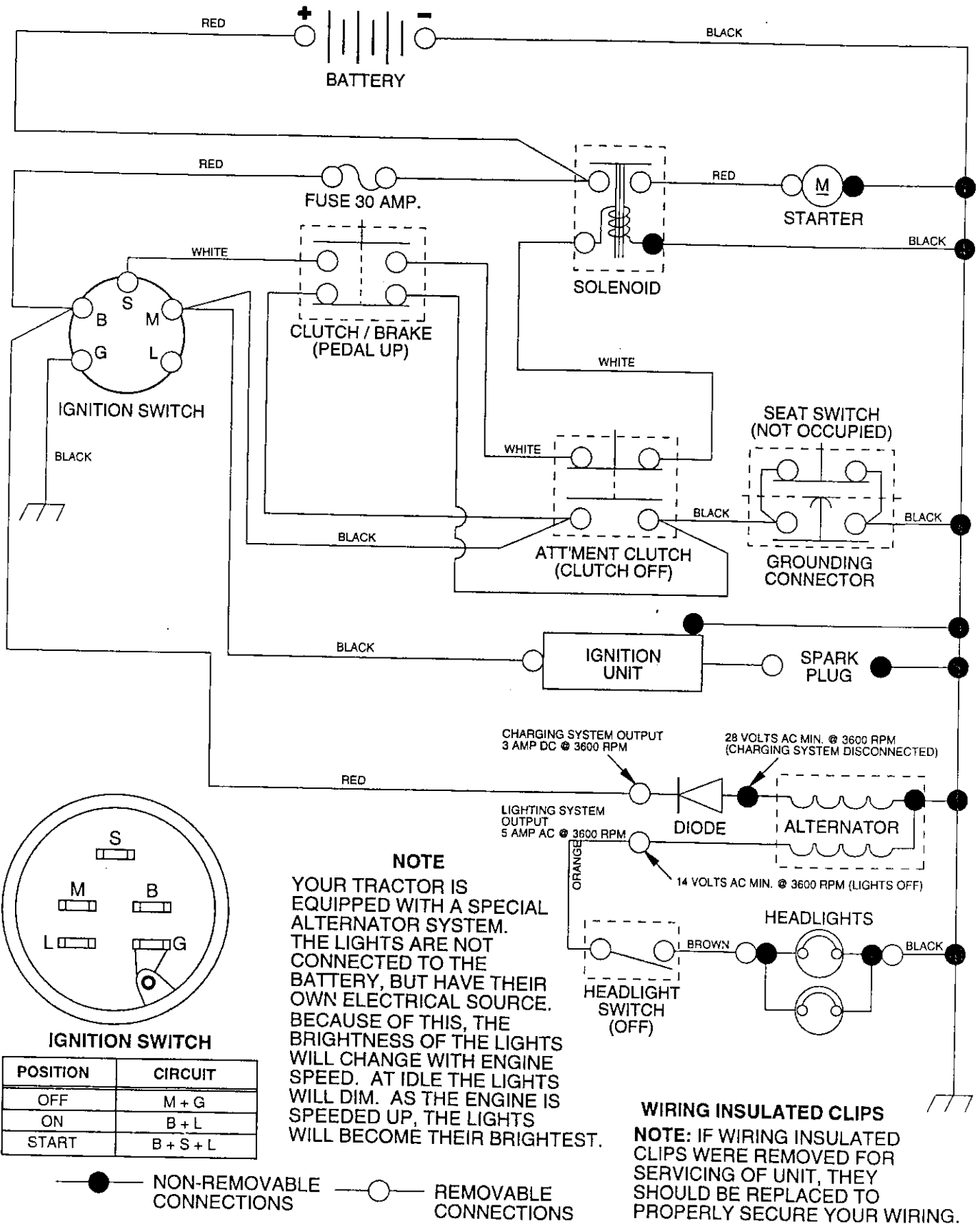
Look for this symbol to point out important safety precautions. It means CAUTION!!! BECOME ALERT!!! YOUR SAFETY IS INVOLVED.



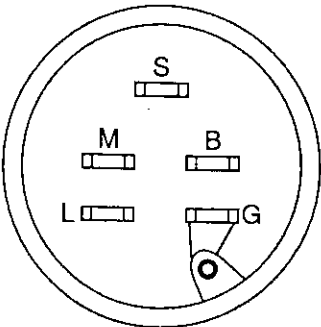
CAUTION: Always disconnect spark plug wire and place wire where it cannot contact spark plug in order to prevent accidental starting when setting up, transporting, adjusting or making repairs.

12.5 HP 42" TRACTOR - - MODEL NUMBER 917.257690

SCHEMATIC



NOTE
 YOUR TRACTOR IS EQUIPPED WITH A SPECIAL ALTERNATOR SYSTEM. THE LIGHTS ARE NOT CONNECTED TO THE BATTERY, BUT HAVE THEIR OWN ELECTRICAL SOURCE. BECAUSE OF THIS, THE BRIGHTNESS OF THE LIGHTS WILL CHANGE WITH ENGINE SPEED. AT IDLE THE LIGHTS WILL DIM. AS THE ENGINE IS SPEEDED UP, THE LIGHTS WILL BECOME THEIR BRIGHTEST.



IGNITION SWITCH

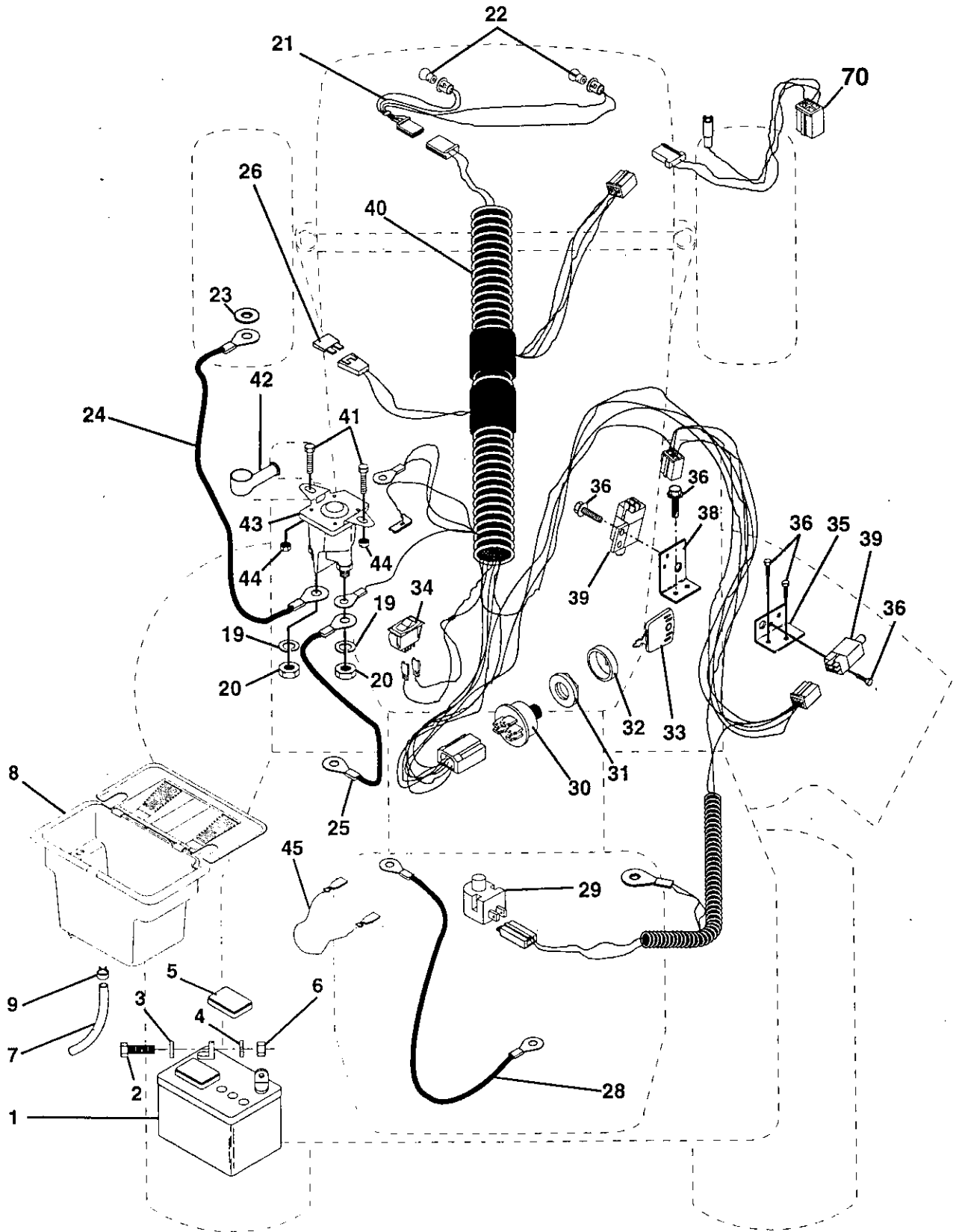
POSITION	CIRCUIT
OFF	M + G
ON	B + L
START	B + S + L

● NON-REMOVABLE CONNECTIONS ○ REMOVABLE CONNECTIONS

REPAIR PARTS

12.5 HP 42" TRACTOR - - MODEL NUMBER 917.257690

ELECTRICAL



REPAIR PARTS

12.5 HP 42" TRACTOR - - MODEL NUMBER 917.257690

ELECTRICAL

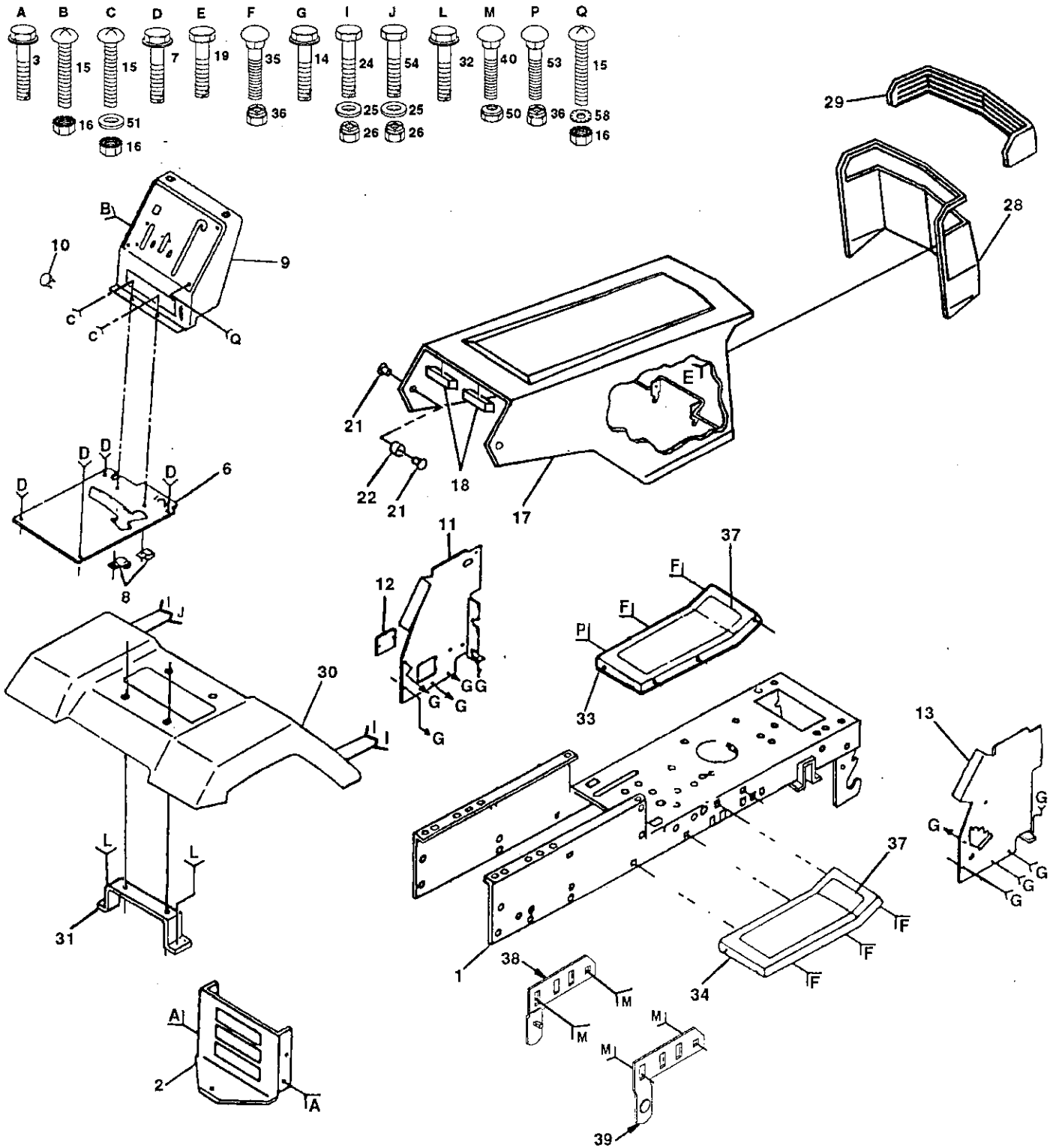
KEY NO.	PART NO.	DESCRIPTION
1	121265X	Battery 12 Volt 25 Amp
2	74760412	Bolt Hex Hd 1/4-20unc X 3/4
3	19091016	Washer 9/32 X 5/8 X 16 Ga
4	10040400	Washer Lock Hvy Helical 1/4
5	121264X	Caps Battery 20/25/30 AMP
6	73220400	Nut Fin Hex 1/4-20 Unc
7	109238X	Tube Plastic 12"
8	129965	Case Battery
9	109596X	Clamp Hose Olive
19	10090400	Washer Lock 1/4
20	73350400	Nut Jam Hex 1/4-20 Unc
21	136850	Harness Asm Light W/4152J
22	4152J	Bulb Light #1156
23	11150400	Washer Lock Internal Tooth 1/4
24	4799J	Cable Battery 6 Ga 11"red
25	132202	Cable Battery 6 Ga 43"red
26	108824X	Fuse 30 AMP Auto Green
28	4207J	Cable Ground 6 Ga 12" black
29	121305X	Switch Plunger Nc Gray
30	140399	Switch Ign 3
31	140400	Nut Ignition
32	141226	Cover Sw Ignition
33	140403	Key Ign
34	110712X	Switch Light Blk Blk Red
35	108236X	Bracket Switch Clutch
36	17021008	Screw Tap Hex #10-24unc X 1/2
38	140336	Bracket Switch Interlock
39	109553X	Switch Intlk Clutch Gry 4 Term
40	140415	Harness Ign
41	71110408	Bolt Blk Fin Hex 1/4-20 x 1/2
42	131563	Cover Terminal Red
43	138406	Solenoid
44	73640400	Nut Keps Hex 1/4-20 Unc
45	140844	Adapter Ammeter Rectangular
70	140413	Harness Eng Briggs/Tec Dual

NOTE: All component dimensions give in U.S. inches
1 inch = 25.4 mm.

REPAIR PARTS

12.5 HP 42" TRACTOR -- MODEL NUMBER 917.257690

CHASSIS AND ENCLOSURES



REPAIR PARTS

12.5 HP 42" TRACTOR -- MODEL NUMBER 917.257690

CHASSIS AND ENCLOSURES

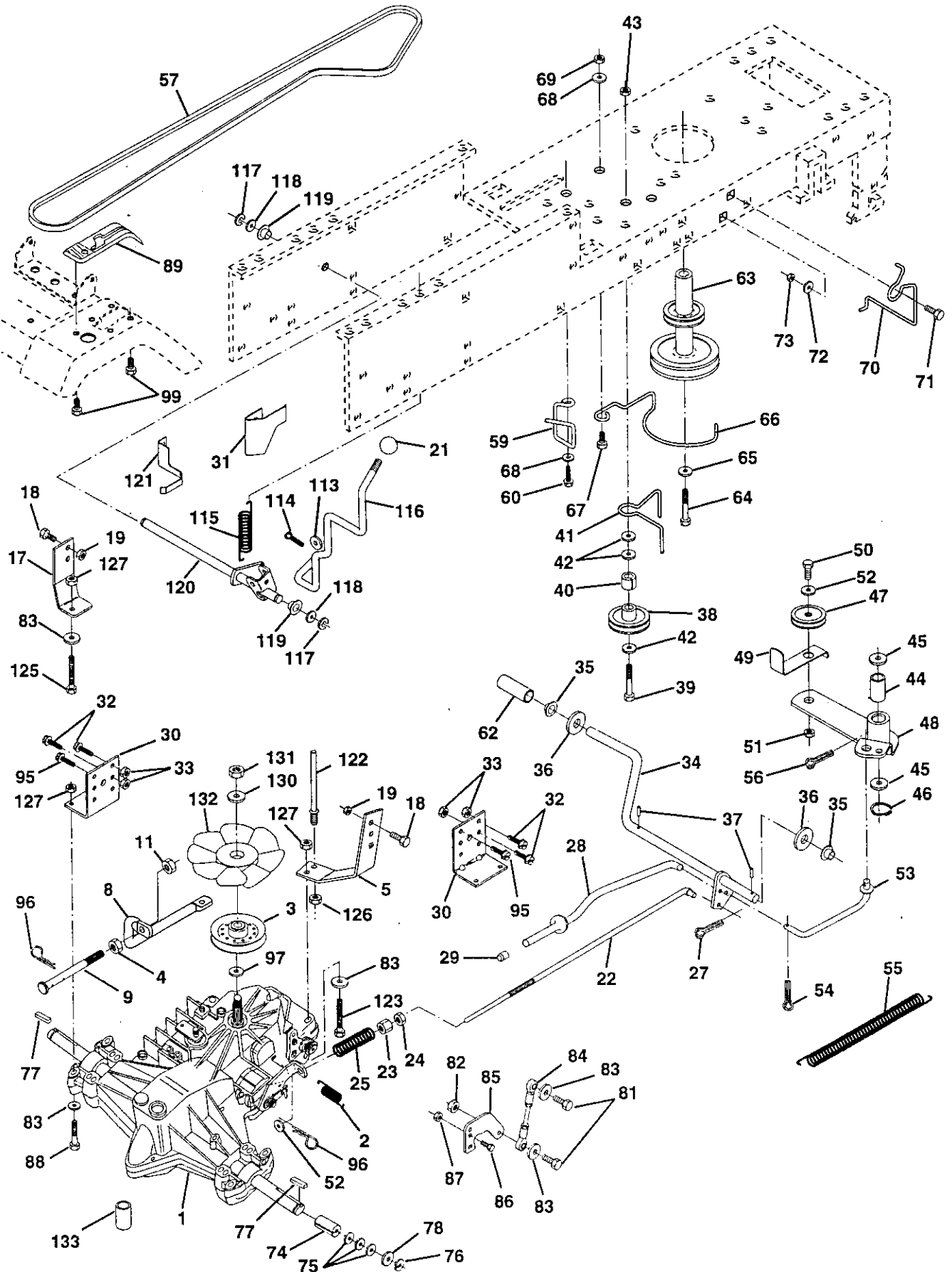
KEY NO.	PART NO.	DESCRIPTION
1	140341	Chassis Assembly
2	140356	Drawbar
3	17490612	Screw, Thd., Roll. 3/8-16 x 3/4
6	140169	Saddle
7	17490612	Screw, Thd. Roll. 3/8-16 x 3/4
8	2751R	Clip, Fuel Line
9	140637X013	Dashboard
10	5479J	Plug, Button
11	122795X	Panel, Dash, LH
12	121794X	Cover, Access
13	124031X012	Panel, Dash, RH
14	17490608	Screw, Thd., Roll. 3/8-16 x 1/2
15	74180512	Screw, Machine, Truss Head 5/16-18 UNC x 3/4
16	STD541431	Nut, Hex, Keps 5/16-18 UNC
17	131445X417	Hood Assembly
18	126938X	Bumper, Hood
19	17521310	Screw Slt'd Hex Hd w/Pl Washer
21	122933X	Rivet, Ratchet, Nylon
22	124479X	Washer, Nylon
24	STD523707	Bolt, Hex, Fin. 3/8-16 UNC x 3/4
25	19131312	Washer 13/32 x 13/16 x 12 Gauge
26	STD541437	Nut, Crownlock 3/8-16 UNC
28	123915X	Grill
29	124029X	Lens, Headlight Bar
30	140001X417	Fender
31	136619	Bracket, Fender
32	17490612	Screw, Thd., Roll. 3/8-16 x 3/4
33	105465X417	Footrest, Perforated, LH
34	105464X417	Footrest, Perforated, RH
35	STD533707	Bolt, Carriage 3/8-16 x 3/4
36	STD541437	Nut, Crownlock 3/8-16 UNC
37	105466X	Pad, Footrest Rbr
38	134774	Bracket Assembly, Pivot, Mower, Rear, LH
39	134775	Bracket Assembly, Pivot, Mower, Rear, RH
40	72140608	Bolt, Carriage 3/8-16 x 1
50	STD541437	Locknut, Hex, with Washer Insert 3/8-16 UNC
51	19131216	Washer 13/32 x 3/4 x 16 Ga
53	72140608	Carriage Bolt 3/8 - 16 x 1
54	74760614	Bolt Hex 3/8 - 16 x 7/8
58	11050600	Washer lock ext. tooth 3/8

NOTE: All component dimensions given in U.S. inches
1 inch = 25.4 mm

REPAIR PARTS

12.5 HP 42" TRACTOR - - MODEL NUMBER 917.257690

DRIVE



REPAIR PARTS

12.5 HP 42" TRACTOR - - MODEL NUMBER 917.257690

DRIVE

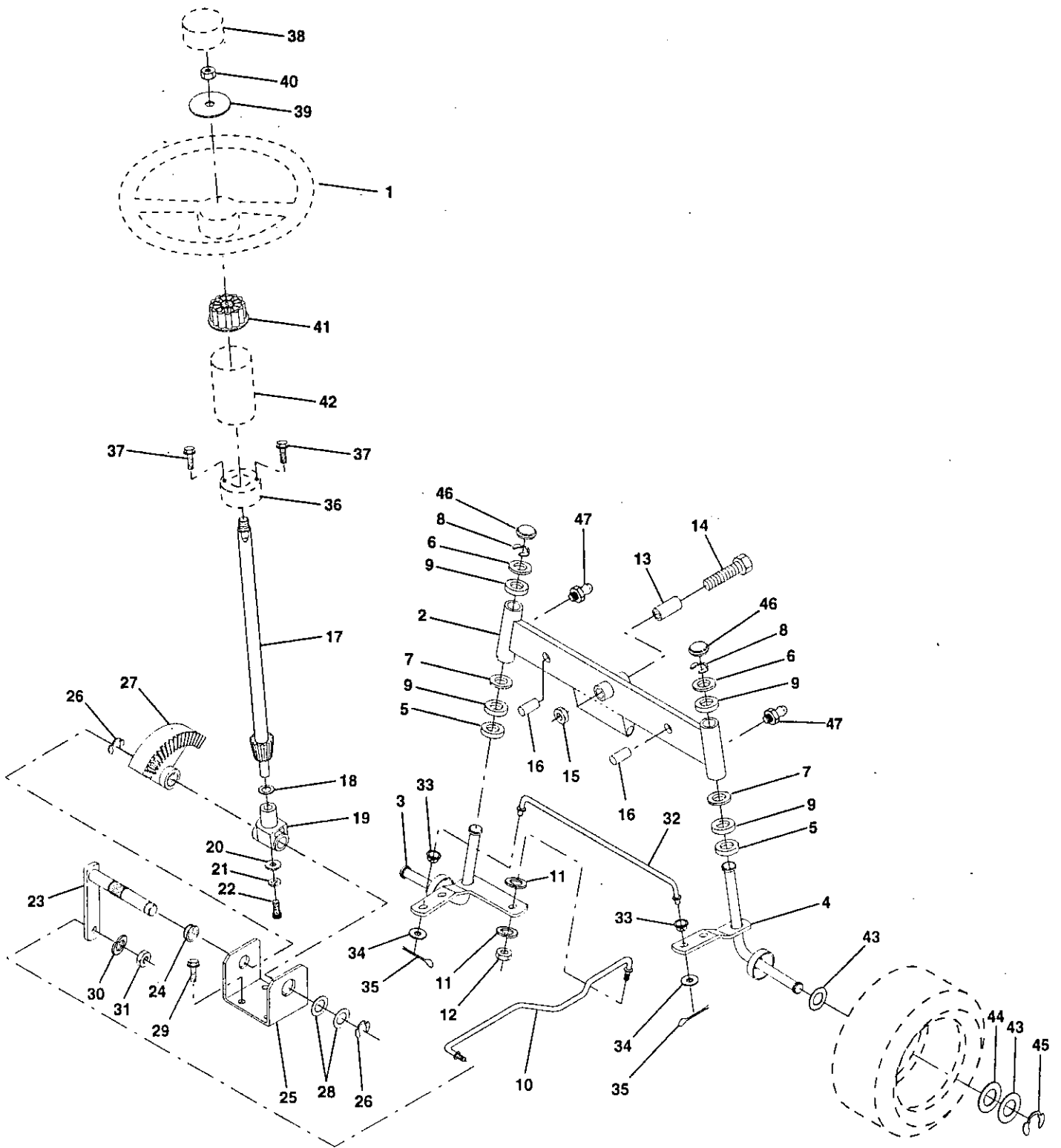
KEY NO.	PART NO.	DESCRIPTION	KEY NO.	PART NO.	DESCRIPTION
1	140295	Transaxle Assembly	63	140186	Pulley, Engine
2	142431	Spring, Return, Brake	64	71170764	Bolt, Hex
3	140293	Pulley, Transaxle	65	10040700	Washer
4	73350500	Nut Hex Jam 5/16-18 Unc	66	129221	Keeper Belt Engine
5	140157	Strap Torque Rh Hydro 18/20" T	67	74760616	Bolt
8	141343	Control Bypass Hydro 18" Tires	68	19131312	Washer 13/32 x 13/16 x 12 Gauge
9	140550	Rod Bypass Hydro 18/20"	69	73680600	Nut
11	73800500	Nut Lock Hex W/Ins 5/16-18 Unc P	70	134683	Keeper Belt Engine
17	140158	Strap Torque Lh Hydro 18/20" T	71	74760616	Bolt Hex 3/8-16 x 1
18	74780616	Bolt Fin Hex 3/8-16 Unc x 1 Gr. 5	72	19132012	Washer 13/32 x 1-1/4 x 12 Gauge
19	73800600	Nut Lock Hex W/Wsh 3/8-16 Unc	73	73680600	Nut Crownlock 3/8-16
21	106933X	Knob, Rd. 1/2-13	74	121199X	Spacer, Split
22	140217	Rod, Brake Hydro	75	121749X	Washer 25/32 x 1-1/4 x 16 Gauge
23	73350600	Nut	76	12000001	E-Ring
24	73800600	Locknut	77	123583X	Key, Square
25	106888X	Spring, Brake Rod	78	121748X	Washer 25/32 x 1-5/8 x 16 Gauge
27	76020412	Pin Cotter 1/8 x 3/4 CAD.	81	74780520	Bolt Fin Hex 5/16-18 Unc x 1-1/4
28	140448	Rod, Parking Brake	82	73800500	Nut Lock Hex W/Ins. 5/16-18 Unc P
29	124236X	Cap, Parking Brake	83	19111216	Washer 11/32 x 3/4 x 16 Ga.
30	130807	Bracket, Transaxle	84	141392	Rod, Tie Hydro 18" Tires
31	127275X	Keeper Belt Lh	85	140156	Arm, Control Hydro
32	74760512	Bolt Hex Hd 5/16-18 Unc x 3/4	86	71070516	Screw Cap Hex 5/16 x 18 x 1
33	73800500	Nut Lock Hex W/Ins. 5/16-18 Unc	87	73800500	Nut Lock Hex W/Ins. 5/16-18 Unc P
34	122424X	Shaft, Foot Pedal	88	74780544	Bolt Fin Hex 5/16-18 Unc
35	120183X	Bearing, Nylon	89	139988	Console, Shift
36	19211616	Washer	95	17490612	Screw, Thdroll. 3/8-16 x 1 Type TT
37	1572H	Pin, Roll	96	4497H	Retainer Spring 1" Zinc/Cad
38	123674X	Pulley, Idler, Flat	97	19211616	Washer 21/32 x 1 x 16 Ga.
39	74760644	Bolt	99	142432	Screw
40	4470J	Spacer, Split	113	19171216	Washer 17/32 x 3/4 x 16 Ga.
41	109070X	Keeper, Belt Retainer	114	76020416	Pin Cotter 1/8 x 1 CAD
42	19131312	Washer 13/32 x 13/16 x 12 Gauge	115	123782X	Spring Torsion T/A
43	73800600	Nut	116	141003	Rod Shift Hydro LT
44	105706X	Bearing, Nylon	117	12000008	Ring Klip #5304-62
45	110812X	Washer, Hardened	118	19212016	Washer 21/32 x 1-1/4 x 16 Ga.
46	12000039	Ring, Klip	119	71208	Bushing Rod Strig. 629/632 ID
47	127783	Pulley, Idler, V-Groove	120	140154	Shaft Asm. Cross Hydro 20" Tires
48	123789X	Bellcrank Assembly	121	140470	Keeper Bolt Lh Hydro 0750. 18/20"
49	123205X	Retainer, Belt	122	140469	Keeper Bolt Rh Hydro 0750. 18/20"
50	74760624	Bolt	123	74780536	Bolt Fin Hex 5/16-18 x 2-1/4
51	73680600	Nut	125	74780524	Bolt Fin Hex 5/6-18 Unc x 1-1/2
52	19131316	Washer	126	73510600	Nut Keps Hex 3/8-16 Unc
53	105710X	Link, Clutch	127	73800500	Nut Lock Hex W/Ins 5/16-18 Unc P
54	76020412	Pin	130	141322	Washer Belville .501D x 1.50D
55	105709X	Spring, Return, Clutch	131	50831	Nut Nylon Insert 1/2-20 Unf.
56	76020412	Pin	132	140462	Fan, Hydro 7"
57	140294	V-Belt, Ground Drive	133	142564	Line Fuel Hydro 4"
59	140312	Keeper, Center Span			
60	17490612	Screw Thdroll. 3/8-16 x 3/4 Ty. TT			
62	8883R	Cover, Pedal			

NOTE: All component dimensions give in U.S. inches.
1 inch = 25.4 mm.

REPAIR PARTS

12.5 HP 42" TRACTOR - - MODEL NUMBER 917.257690

STEERING ASSEMBLY



REPAIR PARTS

12.5 HP 42" TRACTOR - - MODEL NUMBER 917.257690

STEERING ASSEMBLY

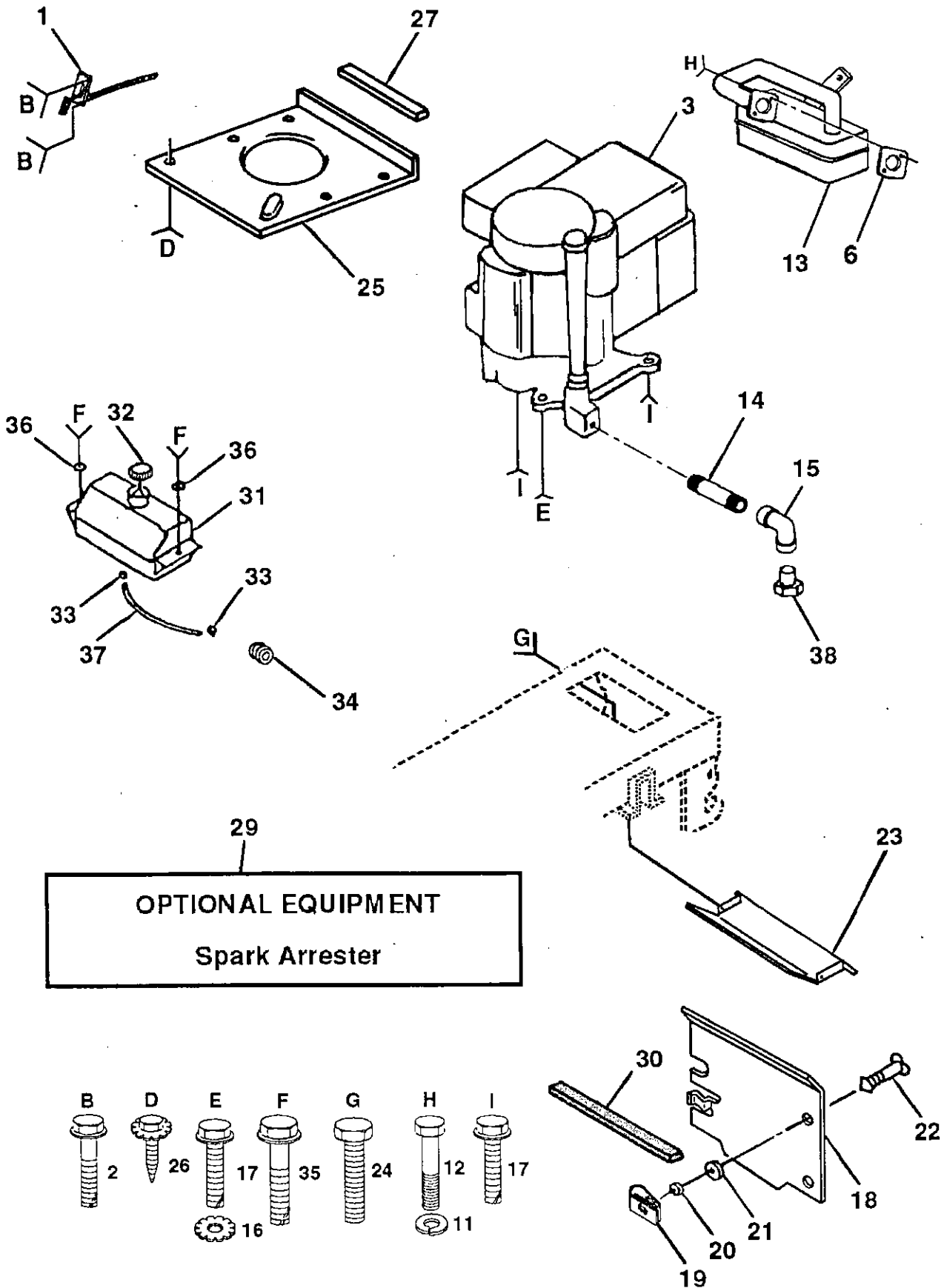
KEY NO.	PART NO.	DESCRIPTION
1	139768	Steering Wheel
2	142033	Axle Assembly, Front
3	135227	Spindle Assembly, LH
4	135228	Spindle Assembly, RH
5	6266H	Bearing, Thrust
6	121748X	Washer 25/32 x 1-5/8 x 16 Gauge
7	19272016	Washer 27/32 x 1-1/4 x 16 Gauge
8	12000029	Ring, Klip
9	3366R	Bearing, Steering Column
10	130468	Link, Drag
11	STD551137	Washer, Lock, Hvy Hlcl Spring 3/8
12	73610600	Nut, Hex, Fin. 3/8-24 UNF
13	110438X	Spacer, Bearing, Front Axle
14	74011056	Bolt, Hex Head 5/8-11 UNC x 3-1/2
15	73901000	Nut, Lock Flange 5/8-11 UNC
16	132624	Pin, Axle 5/8 x 1.55/1.54
17	132614	Shaft Assembly, Steering
18	57079	Washer, Thrust .515 x .750 x .033
19	124035X	Support, Shaft
20	126684X	Washer, Shim 1/4 x 5/8 x .062
21	STD551125	Washer, Lock, Heavy Helical Spring 1/4
22	71070410	Screw, Hex Socket Head 1/4-20 x 5/8
23	127501	Shaft Assembly, Pittman
24	109816X	Nyliner, Snap-In
25	124036X	Bracket, Steering
26	12000029	Ring, Klip
27	136874	Gear, Sector
28	6266H	Bearing, Thrust
29	17490612	Screw, Thd. Roll. 3/8-16 x 3/4
30	STD551137	Washer, Lock, Heavy Helical Spring 3/8
31	73610600	Nut, Hex, Fin. 3/8-24 UNF
32	130465	Rod, Tie
33	126847X	Bushing, Tie Rod
34	19131416	Washer 13/32 x 7/8 x 16 Gauge
35	STD561210	Pin, Cotter 1/8 x 3/4
36	132196	Bushing, Steering
37	STD611005	Screw, Self-Tapping #10-16 x 1/2
38	133742	Insert, Steering Wheel
39	19133808	Washer 13/32 x 2-3/8 x 8 Gauge
40	STD541537	Nut, Centerlock 3/8-24 UNF
41	104820X	Adaptor, Steering Wheel
42	124417X	Boot, Steering Shaft
43	121749X	Washer 25/32 x 1-1/4 x 16 Gauge
44	121748X	Washer 25/32 x 1-5/8 x 16 Gauge
45	12000029	Ring, Klip
46	121232X	Cap, Spindle
47	6855M	Fitting Grease

NOTE: All component dimensions given in U.S. inches
1 inch = 25.4 mm

REPAIR PARTS

12.5 HP 42" TRACTOR - - MODEL NUMBER 917.257690

ENGINE



REPAIR PARTS

12.5 HP 42" TRACTOR - - MODEL NUMBER 917.257690

ENGINE

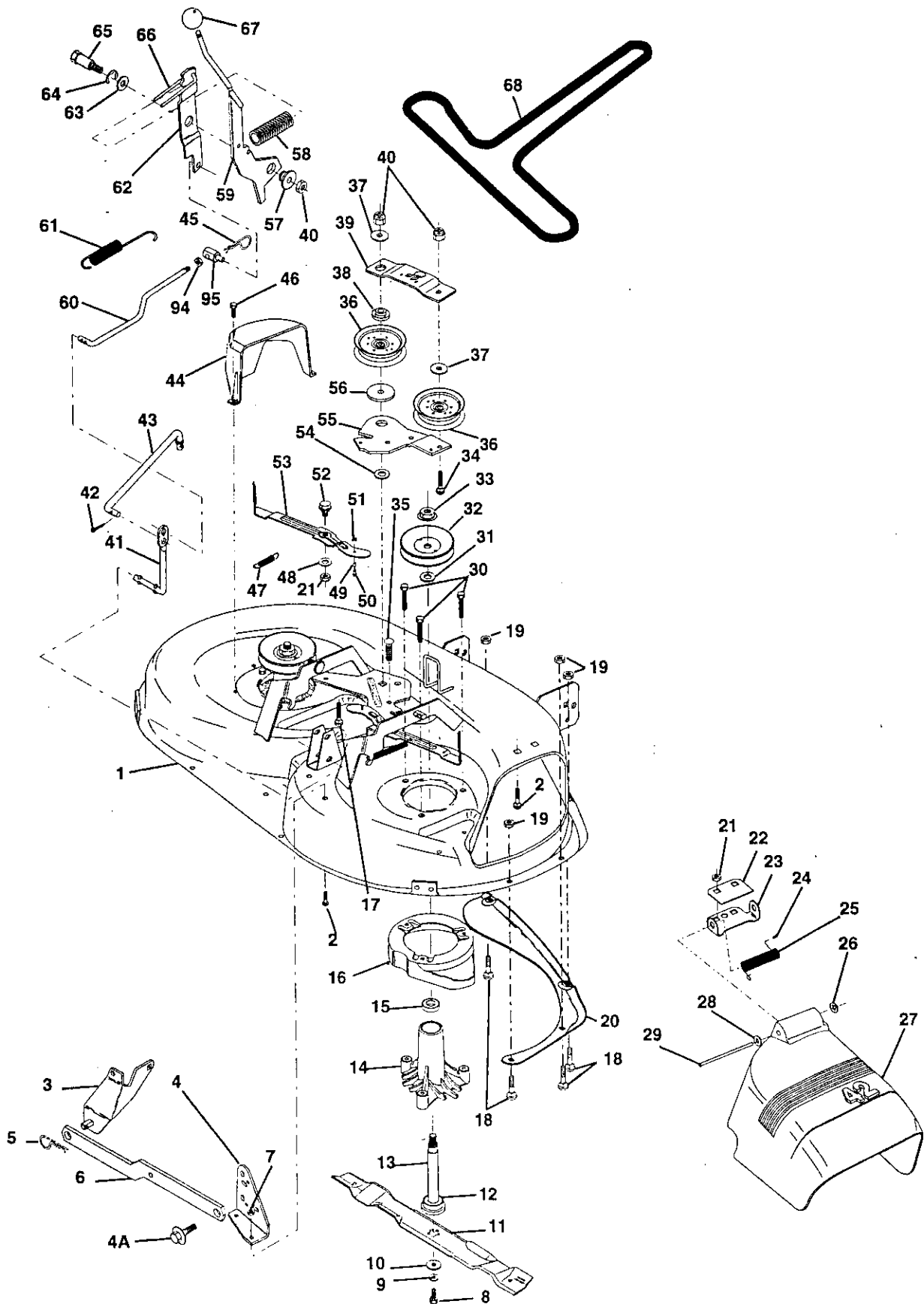
KEY NO.	PART NO.	DESCRIPTION
1	132759	Control, Throttle/Ch RH Blk
2	17720410	Screw, Hex Head, Thread Cutting 1/4-20 x 5/8
3	137418	Engine B&S 12.5 Hp Model No. 286707, Type No. 0441-01
6	125593X	Gasket
11	STD551131	Washer, Lock, Hvy Hlcl Spring 5/16
12	71070512	Screw, Hex Cap Head 5/16-18 x 3/4
13	137348	Muffler, Exhaust
14	13280324	Nipple, Pipe 3/8 NPT x 3
15	13200300	Elbow, Standard 90° 3/8-18 NPT
16	STD551237	Washer, Lock, External Tooth 3/8
17	17490620	Screw, Thd., Roll. 3/8-16 x 1-1/4
18	136718	Shield, Heat
19	105839X	Receptacle, 1/4 Turn
20	105838X	Retainer, 1/4 Turn
21	STD551025	Washer 9/32 x 5/8 x 16 Gauge
22	123650X	Stud, 1/4 Turn
23	128953	Shield, Heat
24	STD601005	Screw, Hex Head, Self-Tapping #10-24 UNC x 1/2
25	124027X	Shield, Heat, Hood
26	17030808	Screw, Hex Head, Spiderlock #8 x 1/2 AB
27	105037X	Strip, Foam
29	137180	Arrestor, Spark
30	127057X	Strap, Hood
31	109202X	Tank, Fuel
32	123549X	Cap Assembly, Fuel Tank, Vented
33	123487X	Clamp, Hose
34	124028X	Bushing, Snap, Nylon, Fuel Line
35	17490412	Screw, Hex Washer Head, Thd., Roll. 1/4-20 x 3/4
36	19091416	Washer 9/32 x 7/8 x 16 Gauge
37	137040	Line, Fuel
38	---	Plug, Oil Drain (Order From Engine Manufacturer)

NOTE: All component dimensions given in U.S. inches
1 inch = 25.4 mm

REPAIR PARTS

12.5 HP 42" TRACTOR - - MODEL NUMBER 917.257690

42" MOWER



REPAIR PARTS

12.5 HP 42" TRACTOR - - MODEL NUMBER 917.257690

42" MOWER

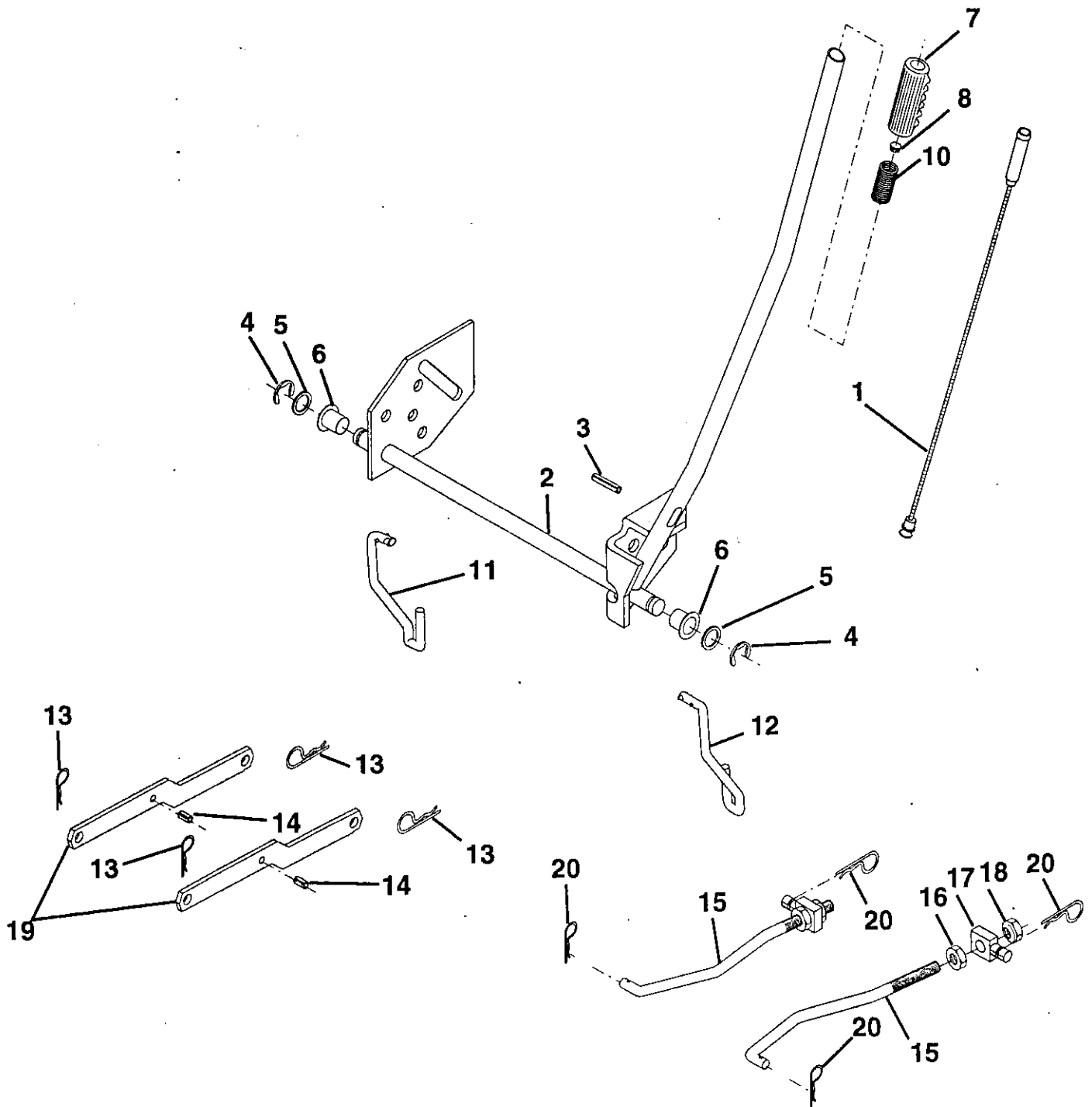
KEY NO.	PART NO.	DESCRIPTION	KEY NO.	PART NO.	DESCRIPTION
1	138024	Mower Housing	37	19131612	Washer 13/32 x 1 x 12 Gauge
2	STD533107	Bolt	38	133502	Spacer, Idler Arm, Upper
3	138017	Bracket Assembly, Sway Bar, Front	39	133503	Stiffner, Idler Arm, Upper, Hardened
4	138440	Bracket Assembly, Sway Bar	40	STD541437	Nut
4A	132827	Bolt, Shoulder	41	133551	Rod, Pivot, with Nibs
5	STD624008	Retainer Spring	42	STD560907	Cotter Pin
6	130832	Arm, Suspension, Rear	43	133504	Rod, Clutch, Secondary, with Nibs
7	73800500	Locknut 5/16-18	44	140088	Guard, Mandrel, L.H.
8	850857	Bolt, Hex 3/8-24 x 1.25 Grade 8	45	STD624003	Retainer
9	STD551137	Washer, Lock	46	137729	Screw, Thd. Roll 1/4-20 x 5/8
10	140296	Washer, Hardened	47	131335	Spring, Extension
11	134149	Blade, Mulching	48	133944	Washer, Hardened
12	129895	Bearing, Ball	49	133940	Roller Assembly, Cam Follower
13	137645	Shaft Assembly, Mandrel, Vented (Includes Key Number 6)	50	131340	Bolt, Shoulder #10-24 Grade 5
14	128774	Housing, Mandrel, Vented	51	STD541410	Locknut
15	110485X	Bearing, Ball, Mandrel	52	139888	Bolt, Shoulder 5/16-18 UNC
16	136929	Stripper, Vented Mower Deck	53	131845	Arm Assembly, Pad, Brake
17	72110618	Bolt, Carriage 3/8-16 x 2-1/4	54	133943	Washer, Hardened
18	72140505	Bolt, Carriage 5/16-18 x 5/8	55	133844	Arm, Idler
19	73800500	Locknut 5/16-18	56	122052X	Spacer, Retainer
20	136888	Baffle, Vortex	57	127498	Bushing, Large, Brass
21	STD541431	Nut	58	128759	Spring, Mower Clutch
22	134753	Stiffener Bracket	59	140334	Arm, Clutch, Primary
23	131267	Bracket, Deflector	60	142427	Rod, Clutch, Primary, with Nibs
24	105304X	Cap, Sleeve	61	131870	Spring, Return
25	123713X	Spring, Torsion, Deflector	62	127847	Arm, Clutch, Secondary
26	110452X	Nut, Push	63	121748X	Washer 25/32 x 1-5/8 x 16 Gauge
27	130968	Shield, Deflector	64	12000029	Ring, Klip
28	19111016	Washer 11/32 x 5/8 x 16 Gauge	65	128903	Bolt, Shoulder 3/8-16 UNC x 1.44
29	131491	Rod, Hinge	66	127845	Keeper, Spring
30	138776	Screw Thdrol Hex Head Zinc Mwr	67	106932X	Knob, Round 3/8-16 UNC
31	129963	Washer, Spacer	68	130969	V-Belt
32	129861	Pulley, Mandrel	94	73350600	Nut, Hex Jam 3/8-16 UNC
33	137266	Nut, Toplock, Flanged	95	142028	Trunnion Adj. 94
34	STD533717	Bolt	--	130794	Mandrel Assembly (Includes Key Numbers 8-10, 12-15, 31 and 32)
35	133835	Fastner, Christmas Tree	--	138358	Mower Deck, Complete
36	131494	Pulley, Idler, Flat			

NOTE: All component dimensions given in U.S. inches.
1 inch = 25.4 mm.

REPAIR PARTS

12.5 HP 42" TRACTOR - - MODEL NUMBER 917.257690

MOWER LIFT



REPAIR PARTS

12.5 HP 42" TRACTOR - - MODEL NUMBER 917.257690

MOWER LIFT

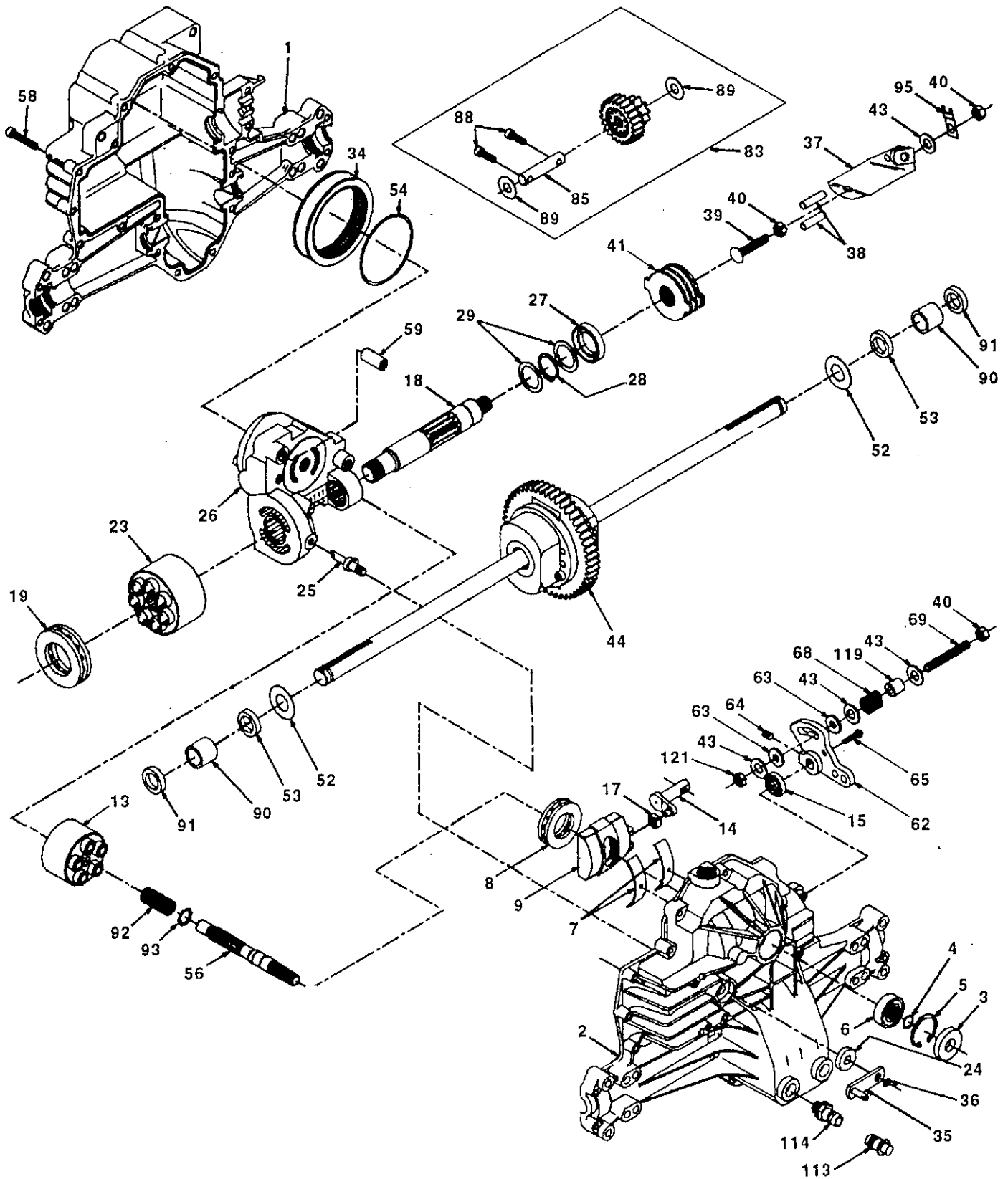
KEY NO.	PART NO.	DESCRIPTION
1	136973	Rod, Asm. Lever
2	122507X	Shaft Asm Lift
3	105767X	Pin Groove
4	12000002	E Ring #5133-62
5	19211621	Washer Pltd 21/32 x 1 x 21 Ga.
6	120183X	Bearing Nylon
7	125631X	Grip Handle Fluted
8	122365X	Button Plunger Red
10	122512X	Spring Cprsn
11	134619	Link Lift Lh Fixed Length
12	135388	Link Lift Rh Fixed Length
13	4939M	Retainer Spring
14	135563	Pin Roll Slit 5/16 x 1.25
15	127218	Link Front
16	73350800	Nut Jam Hex 1/2 - 13 Unc
17	130171	Trunnion Blk Zinc
18	73800800	Nut Lock w/wsh 1/2 - 13 Unc
19	130832	Arm Suspension Rear
20	3146R	Spring Retainer

NOTE: All component dimensions given in U.S. inches
1 inch = 25.4 mm

REPAIR PARTS

12.5 HP 42" TRACTOR - - MODEL NUMBER 917.257690

HYDRO GEAR TRANSAXLE - MODEL NUMBER 319-0750



REPAIR PARTS

12.5 HP 42" TRACTOR - - MODEL NUMBER 917.257690

HYDRO GEAR TRANSAXLE - MODEL NUMBER 319-0750

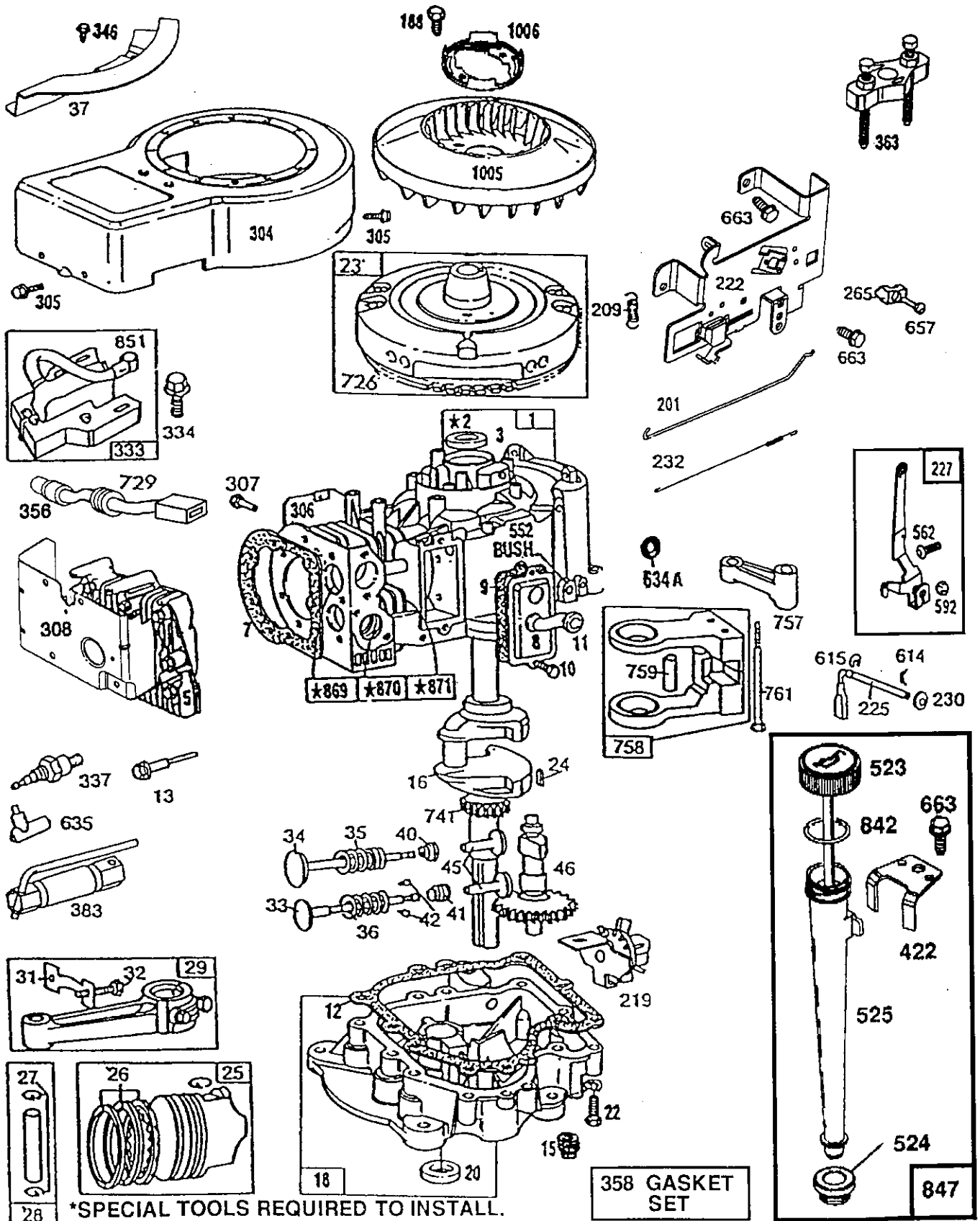
KEY PART NO. NO.	DESCRIPTION	KEY PART NO. NO.	DESCRIPTION
1 142930	Housing, Lower	43 142884	Washer 7/16 x 7/8 x .060
2 142931	Assembly, Upper Housing	44 142959	Differential Assembly
3 142932	Seal, Lip	52 142960	Washer 3/4 x 1.5 x .03
4 142928	Ring, Wire Retaining	53 142961	Seal .75 x 1.25 x .250
5 142933	Ring, Retaining	54 142962	O-Ring .103 x 2.987 ID
6 142934	Bearing, Shaft Ball	56 142963	Shaft, Input
7 142935	Bearing, Cradle	58 142964	Bolt 1/4-20 x 1.38
8 142936	Bearing, Thrust 30 x 52 x 13	59 142965	Pin .5 OD x .43 ID x .750
9 142937	Swashplate, Variable	62 142966	Arm, Control
13 142938	Block, Cylinder Assembly	63 142967	Puck, Dampener
14 142939	Arm, Trunnion	64 142920	Set Screw
15 142940	Seal, Lip	65 142968	Bolt #8-32 x .875
17 142941	Guide, Slot	68 142969	Spring
18 142942	Shaft, Motor	69 142970	Socket Set Screw
19 142943	Bearing, Thrust 42 x 68 x 16	83 142971	Jack Shaft Assembly
23 142944	Block, Cylinder Assembly	85 142972	Jack Shaft
24 142945	Seal, Lip 10 x 25 x 7	88 142973	Capscrew
25 142946	Actuator, Bypass	89 142974	Washer
26 142947	Center Section Assembly Kit	90 142975	Sleeve Bearing
27 142948	Seal, Lip 26 x 42 x 8	91 142976	Seal, Wiper
28 142949	Ring, Retaining	92 142977	Spring, Block
29 142950	Washer 26 x 35 x 1	93 142978	Washer, Block Thrust
34 142951	Oil Filter Element	95 142979	Strap, Locking
35 142952	Arm, Bypass	113 142917	Cap, Vent Assembly
36 142953	Ring, Retaining	114 142918	Fitting, O-Ring Assembly
37 142954	Arm, Actuating	119 142980	Spacer
38 142955	Pin, Actuating	121 142981	Jam Nut 5/16-24
39 142956	Bolt 5/16-24 x 1-3/4		
40 142957	Locknut, Hex 5/16-24 UNJC		
41 142958	Brake Rotor/Stator Kit		

NOTE: All component dimensions given in U.S. inches
1 inch = 25.4 mm

REPAIR PARTS

12.5 HP 42" TRACTOR - - MODEL NUMBER 917.257690

BRIGGS & STRATTON ENGINE - MODEL NO. 286707, TYPE NO. 0441-01



*SPECIAL TOOLS REQUIRED TO INSTALL.

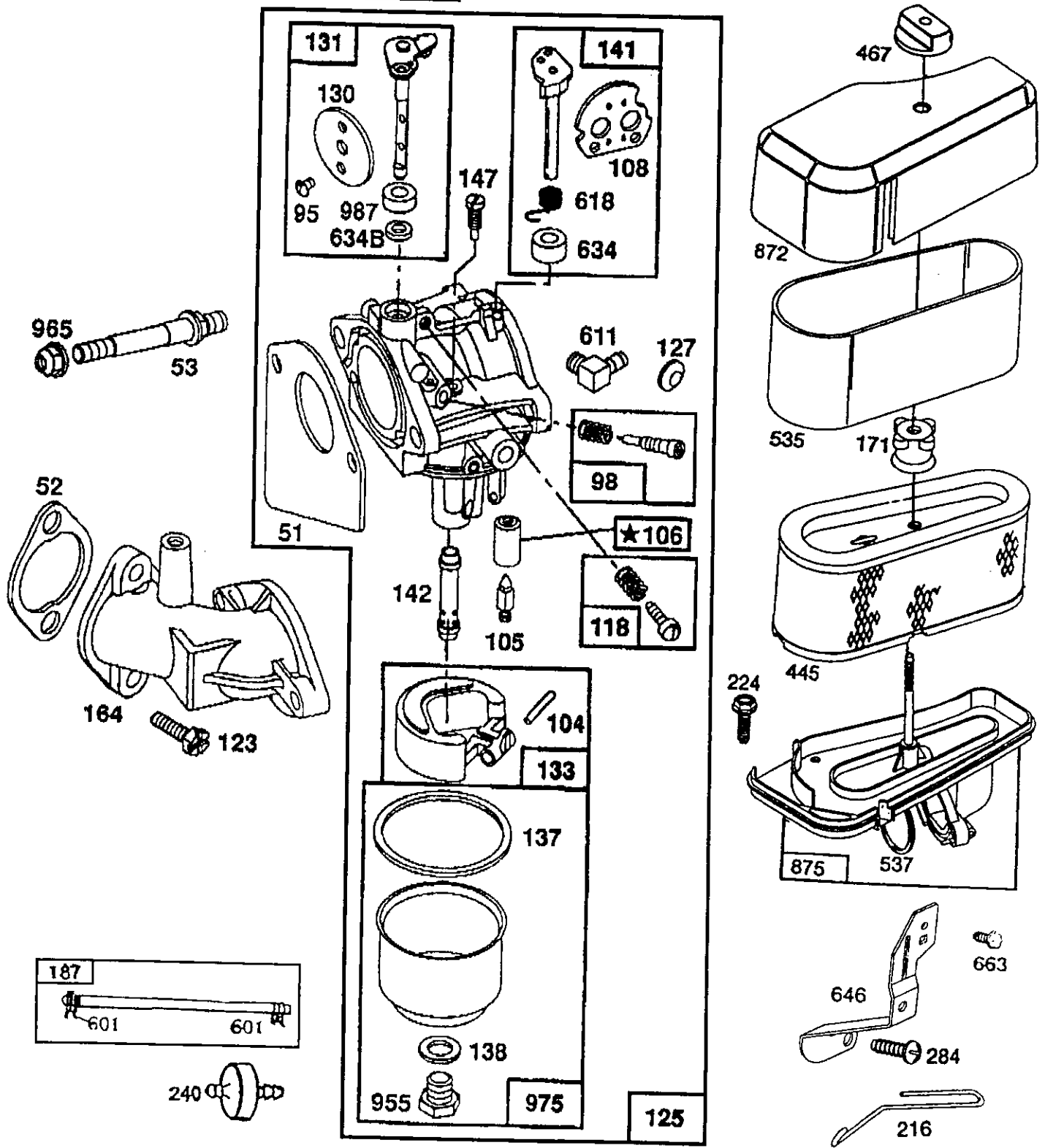
358 GASKET SET

REPAIR PARTS

12.5 HP 42" TRACTOR - - MODEL NUMBER 917.257690

BRIGGS & STRATTON ENGINE - MODEL NO. 286707, TYPE NO. 0441-01

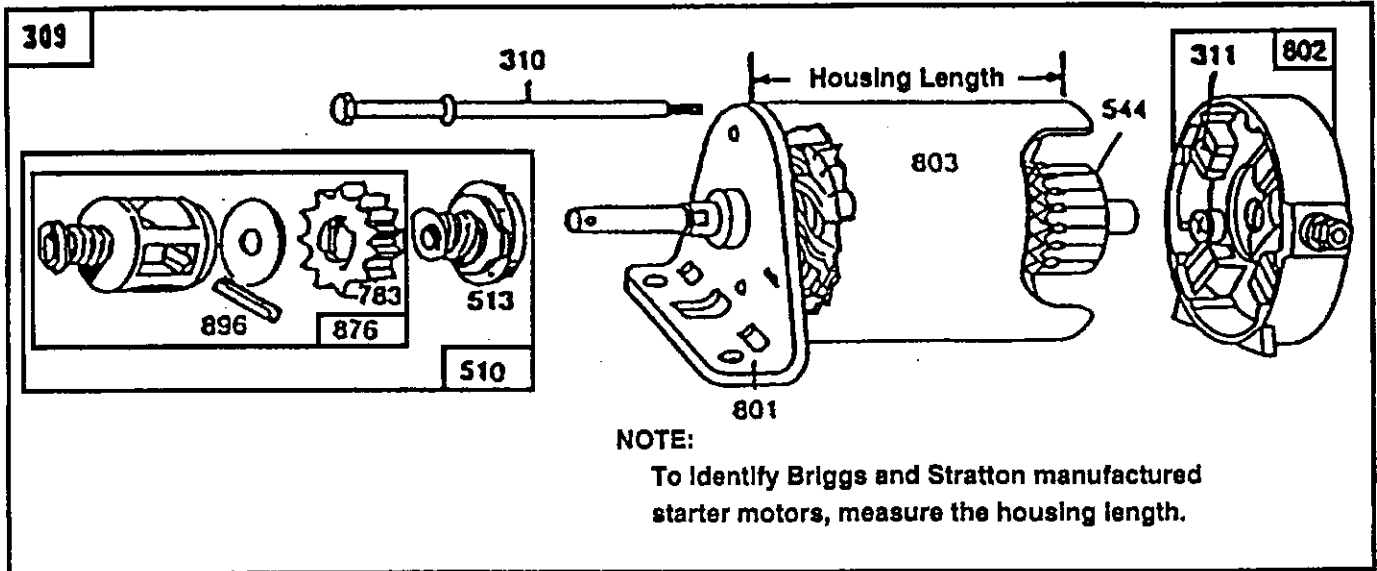
121 CARBURETOR OVERHAUL KIT



REPAIR PARTS

12.5 HP 42" TRACTOR - - MODEL NUMBER 917.257690

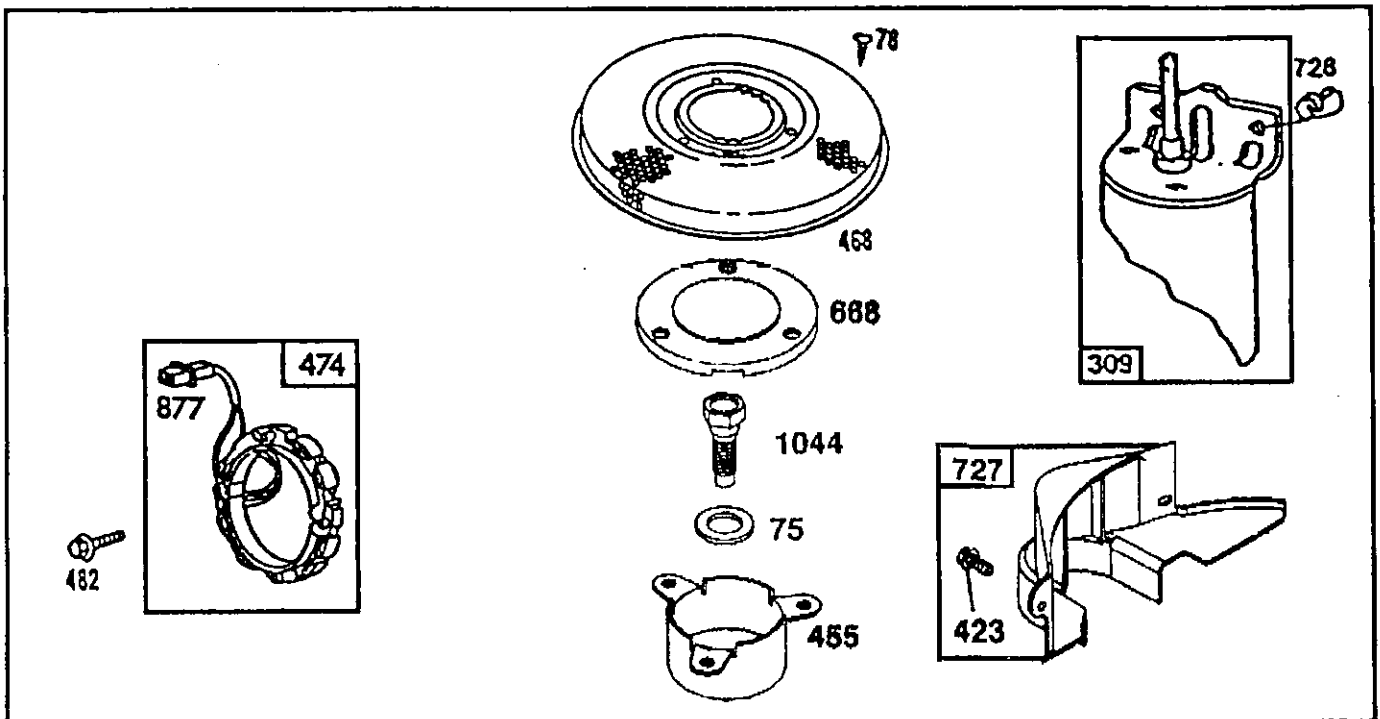
BRIGGS & STRATTON ENGINE - MODEL NO. 286707, TYPE NO. 0441-01



KEY NUMBER		309	310	311	510	544	801	802	803
MANUFACTURER		Motor and Drive Assy.	Thru Bolt Assembly	Brush Assembly	Drive Assembly	Armature Assembly	Drive End Cap Assembly	End Cap Assy. Commutator	Housing Assembly
Briggs & Stratton	Housing Length								
12V	3-21/32"	394805	94003	395538	490421**	390837	394856	395537*	398159

*Includes Brush Set

- **Includes
- #398003 Clutch Assembly (Key Number 513)
 - #280104 Gear (Key Number 783)
 - #490467 Retainer and Pin (Key Number 876)
 - #94288 Roll Pin (Key Number 896)



REPAIR PARTS

12.5 HP 42" TRACTOR - - MODEL NUMBER 917.257690

BRIGGS & STRATTON ENGINE - MODEL NO. 286707, TYPE NO. 0441-01

KEY PART NO.	NO.	DESCRIPTION	KEY PART NO.	NO.	DESCRIPTION
1	490450	Cylinder Assembly	45	262248	Tappet-Valve
2	399265	Bearing, Cylinder (Requires Special Tools For Installation)	46	212897	Gear, Cam
3	391086	* Seal, Oil	51	272465	*** Gasket, Carburetor (Carburetor to Elbow)
5	494240	Head, Cylinder	52	272554	* Gasket, Carburetor (Elbow to Cylinder)
7	271866	* Gasket, Cylinder Head	53	94637	Stud, Carburetor Mounting
8	391406	Breather Assembly	75	224061	Washer, Spring
9	27803	Gasket, Valve Cover	78	93805	Screw, Sems
10	94621	Screw, Sems	95	94098	** Screw, Throttle
11	280100	Tube, Breather	98	495800	Screw, Idle Speed
12	271916	* Gasket, Crankcase Cover 1/64"	104	231789	** Pin, Float Hinge
	271997	* Gasket, Crankcase Cover .005"	105	231855	** Valve Assembly, Inlet Needle
	271996	* Gasket, Crankcase Cover .009"	106	231854	Inlet Valve Seat
13	94622	Screw, Cylinder Head 3"	108	224540	Valve, Choke
15	94239	Plug, Oil Drain	118	494383	** Valve, Needle
16	495162	Crankshaft	121	495799	Carburetor Overhaul Kit (Includes items marked ** and ***)
	94196	Key, Timing Gear	123	94616	Screw, Elbow Mounting
18	494238	Base, Engine	125	495706	Carburetor Assembly
20	291675	* Seal, Oil	127	- - -	** Plug, Welch (Sold in Kit Only)
22	94624	Screw, Sems, Base Mounting	130	224539	Valve, Throttle
23	492326	Flywheel and Ring Gear Assembly, Magneto	131	494379	Shaft and Lever, Throttle
24	222698	Key, Flywheel	133	494381	Float, Carburetor
25	394661	Piston Assembly, Standard	137	281165	*** Gasket, Float Bowl
	394662	Piston Assembly .010" Oversize	138	281164	*** Washer, Float Bowl Screw
	394663	Piston Assembly .020" Oversize	141	494380	** Shaft and Lever, Choke
	394664	Piston Assembly .030" Oversize	142	494537	** Nozzle/Jet, Carburetor
26	391780	Ring Set, Piston, Standard		494499	High Altitude Kit:
	392331	Ring Set, Piston, Chrome, Standard	147	231794	231796 Pilot Jet, High Altitude
	391781	Ring Set, Piston .010" Oversize	164	213819	281164 Seal, Bowl Screw
	391782	Ring Set, Piston .020" Oversize	171	281051	** Pilot, Jet
	391783	Ring Set, Piston .030" Oversize	187	393815	Carburetor, Elbow
27	260924	Lock, Piston Pin	188	93535	Nut, Air Cleaner Mounting
28	299691	Pin Assembly, Piston, Standard	201	262767	Line, Fuel, 11" (Cut To Suit)
	391286	Pin Assembly, Piston .005" Over	209	260871	Screw, Sems 3/4"
29	490348	Rod Assembly, Connecting	216	262766	Link, Governor
	490469	Rod Assembly, Connecting .020" Undersize Crankpin Bore	219	490815	Spring, Governor
31	222299	Lock, Connecting Rod Screw			Link, Choke
32	92909	Screw, Connecting Rod			Oil Slinger, Governor Gear and Bracket Assembly
33	262246	Valve, Exhaust			
34	262247	Valve, Intake			
35	65906	Spring, Intake Valve			
36	26828	Spring, Exhaust Valve			
37	224502	Guard, Flywheel			
40	221596	Retainer, Intake Valve			
41	292260	Rotocoil, Exhaust Valve			
42	93630	Retainer, Exhaust Valve Rotocoil			

* Included in Gasket Set (494241)
 ** Included in Carburetor Overhaul Kit (495799)
 *** Included in both Carburetor Overhaul Kit (495799) and Carburetor Gasket Set (494385)

NOTE: All component dimensions given in U.S. inches
 1 inch = 25.4 mm

REPAIR PARTS

12.5 HP 42" TRACTOR - - MODEL NUMBER 917.257690

BRIGGS & STRATTON ENGINE - MODEL NO. 286707, TYPE NO. 0441-01

KEY PART NO. NO.	DESCRIPTION	KEY PART NO. NO.	DESCRIPTION
222 494887	Plate, Governor Control (Choke-A-Matic)	618 262803	Spring, Choke Return
224 94729	Screw, Sem, Air Cleaner	634 281168	** Seal, Choke Shaft
225 231058	Crank, Governor, 1/4" Diameter	634A 491323	* Seal, Governor
227 493935	Lever Assembly, Governor	634B 281167	Washer, Throttle Shaft
230 94742	Washer, Governor Crank, 1/4" I.D.	635 66538	Elbow, Spark Plug
232 262785	Spring, Governor Link	646 224546	Brace, Air Cleaner
240 394358	Filter, Fuel	657 93496	Screw, Sems
265 221535	Clamp, Casing	663 94620	Screw, Hex Head
284 94326	Screw, Air Cleaner	668 280848	Spacer
304 224504	Housing, Blower, Red	726 392134	Gear, Ring
305 94619	Screw, Sems, Blower Housing Mounting	727 490324	(Includes Mounting Parts) Cover, Starter (Includes Mounting Screws)
306 224545	Shield, Cylinder	728 94627	Screw, Sems
307 94623	Screw, Sems, Cylinder Shield Mtg.	729 281159	Clip, Lead Wire
308 491490	Cover, Cylinder Head	741 262135	Gear, Timing
309 - - -	Motor, Starting, 12 Volt (See Chart on Illustrated Pages for Replacement Parts)	757 212359	Link, Counterweight
333 492341	Armature, Magneto	758 399891	Counterweight Assembly
334 93381	Screw, Sems, Armature Mounting	759 298909	Pin, Counterweight
337 802592	Plug, Spark, (1-7/8" or 47 mm) (Resistor Type)	761 93875	Screw, Counterweight
346 93705	Screw, Hex Head	842 270920	Seal, Oil Filler Cap
356 494328	Wire, Ground	847 490474	Fill Group, Oil
358 494241	Gasket Set (Includes all items marked *)	851 221798	Terminal, Ignition Cable
363 19203	Puller, Flywheel	869 261463	Seat, Intake Valve, Standard
383 89838	Wrench, Spark Plug	870 210940	Seat, Exhaust Valve, Standard
422 224390	Clamp, Oil Filler Tube	871 261961	Guide, Exhaust Valve
423 93984	Screw, Sems	872 281104	Cover, Air Cleaner
445 493909	Cartridge, Air Cleaner	875 494237	Body, Air Cleaner
455 222561	Cup, Screen Mounting	877 393456	Diode and Connector Assembly, Dual Circuit
467 493903	Knob, Air Cleaner	955 94642	** Screw, Fuel Bowl
468 222562	Screen, Flush Rotating	965 94108	Locknut, Air Cleaner Mounting
474 393474	Stator, Alternator, Dual Circuit	975 494378	Bowl Assembly, Carburetor
482 93621	Screw, Sems	977 494385	Carburetor Gasket Kit (Includes items marked ***)
523 495230	Cap and Dipstick, Oil Filler	987 281166	** Seal, Throttle Shaft
524 68838	Seal, Filler Tube	1005 280687	Fan, Flywheel
525 280741	Tube, Oil Filler	1006 224413	Retainer, Fan
535 272403	Element, Air Cleaner	1044 94673	Screw, Shoulder, Hex Head
537 281106	* O-Ring, Air Cleaner	RPM Settings:	Low Speed: 1550-1950 High Speed: 3200-3400
552 231597	Bushing, Governor Crank, 1/4" I.D.	* Included in Gasket Set (494241)	
562 92613	Bolt, Governor Lever	** Included in Carburetor Overhaul Kit (495799)	
592 231082	Nut, Hex #10-24	*** Included in both Carburetor Overhaul Kit (495799) and Carburetor Gasket Set (494385)	
601 93053	Clamp, Fuel Pipe		
611 494451	Fuel Inlet Tube		
614 93306	Cotter, Hair Pin		
615 93307	Retainer, E-Ring		

NOTE: All component dimensions given in U.S. inches
1 inch = 25.4 mm