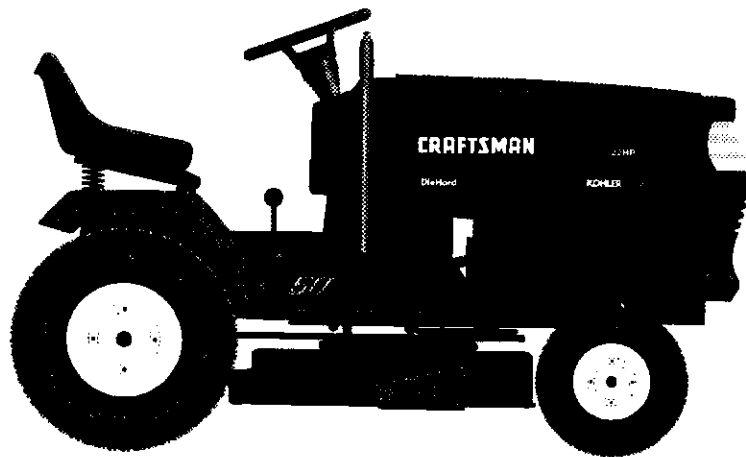


SEARS

CRAFTSMAN[®]

MODEL NUMBER 917.257740 OWNER'S MANUAL

- **Assembly**
- **Operation**
- **Customer Responsibilities**
- **Service and Adjustments**
- **Repair Parts**

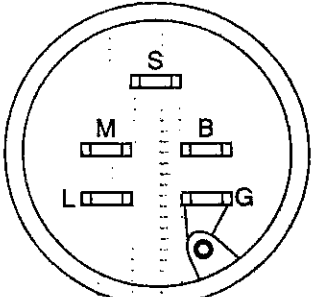
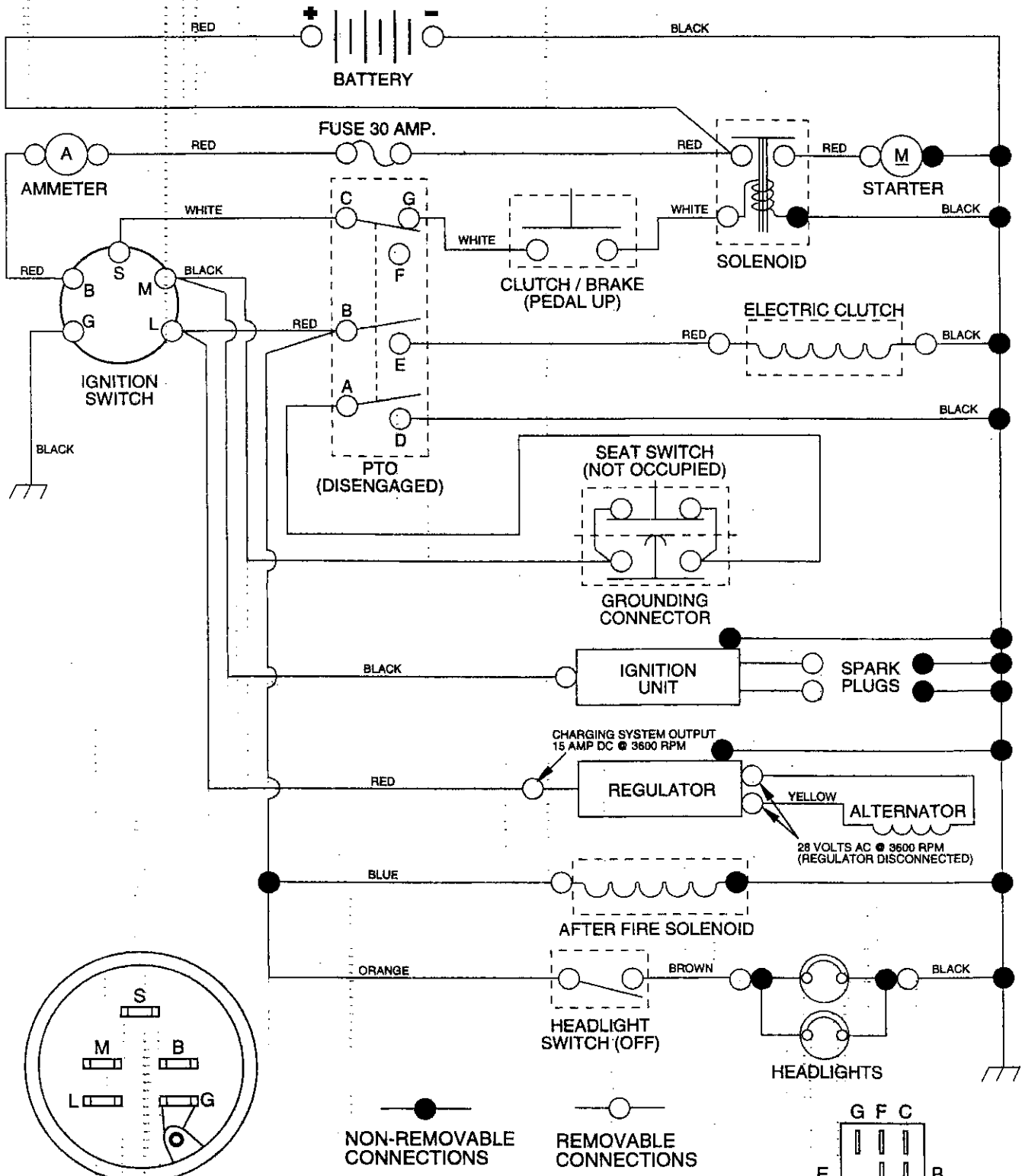


CAUTION: Read and follow all safety rules and instructions before operating this equipment.

Sears, Roebuck and Co., Hoffman Estates, IL 60179 U.S.A.

22 HP 50" TRACTOR - - MODEL NUMBER 917.257740

SCHEMATIC

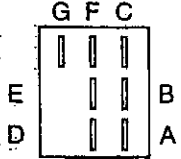


IGNITION SWITCH

POSITION	CIRCUIT
OFF	M + G
ON	B + L
START	B + S + L

NON-REMOVABLE CONNECTIONS
 REMOVABLE CONNECTIONS

WIRING INSULATED CLIPS
 NOTE: IF WIRING INSULATED CLIPS WERE REMOVED FOR SERVICING OF UNIT, THEY SHOULD BE REPLACED TO PROPERLY SECURE YOUR WIRING



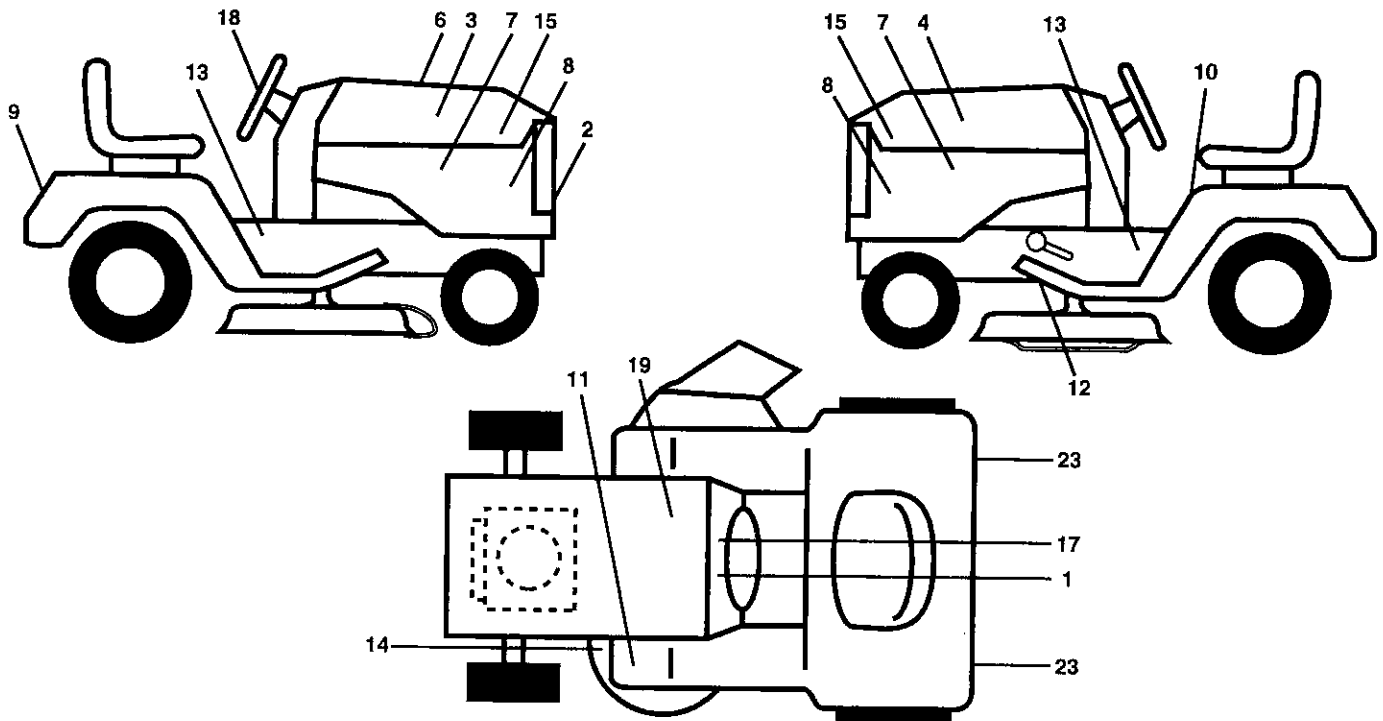
PTO SWITCH

POSITION	CIRCUIT
OFF	C + G
ON	C + F, B + E, A + D

REPAIR PARTS

22 HP 50" TRACTOR - - MODEL NUMBER 917.257740

DECALS



KEY PART NO. NO.

DESCRIPTION

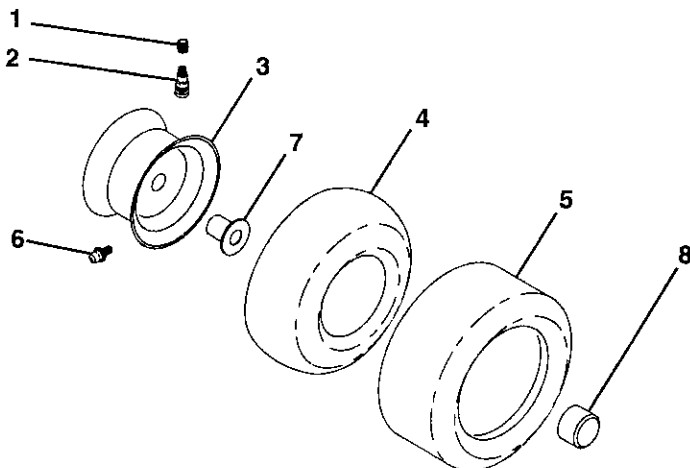
1	138955	Decal, Operating Instruction
2	142254	Decal, Grill GT 6000 USA Black
3	138042	Decal, Hood, Craftsman, RH
4	138043	Decal, Hood, Craftsman, LH
6	133644	Decal, Maintenance
7	138048	Decal, Side Panel
8	142241	Decal, Side Panel
9	128314	Decal, Fender, Craftsman
10	137537	Decal, Caution
11	4900J	Decal, Clutch/Brake
12	138435	Decal, V-Belt Drive Schematic

KEY PART NO. NO.

DESCRIPTION

13	128884	Decal, Chassis, 6 Speed/50"
14	139346	Decal, V-Belt Schematic
15	142250	Decal Hood Insert Hd GT
17	138834	Decal, Dash
18	132266	Decal, Insert Strg
19	138047	Decal, Battery
23	106202X	Reflector, Taillight
--	138311	Decal, Handle Lft Height Adjust (Lift Handle)
--	143903	Manual, Owner's (Eng)
--	143904	Manual, Owner's (Span)

WHEELS & TIRES



KEY PART NO. NO.

DESCRIPTION

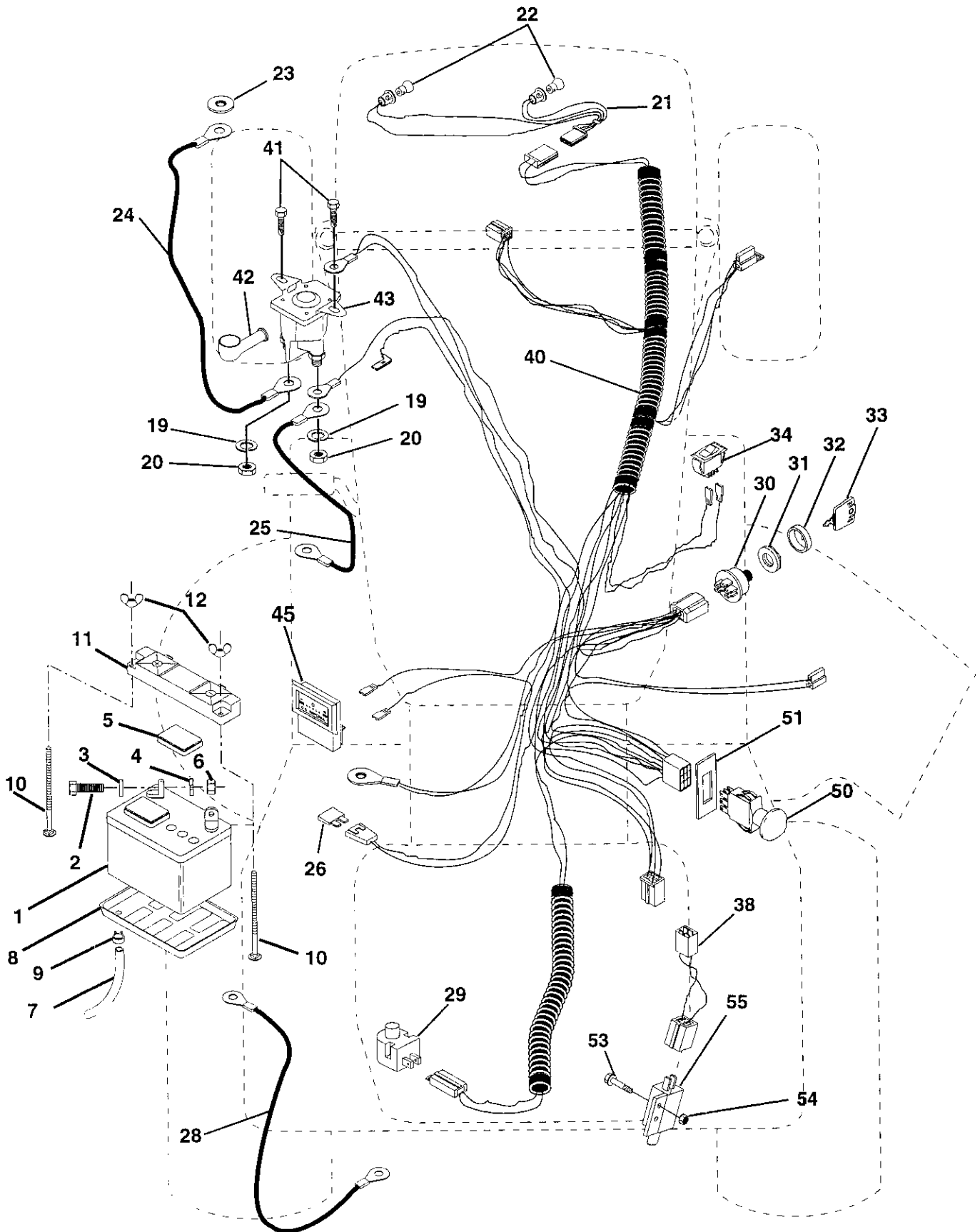
1	59192	Cap, Valve, Tire
2	65139	Stem, Valve
3	106228X427	Rim Assembly, Front
	106277X427	Rim Assembly, Rear
4	8134H	Tube, Front (Service Item Only)
	7154J	Tube, Rear (Service Item Only)
5	106230X	Tire, Front
	105588X	Tire, Rear
6	278H	Fitting, Grease (Front Wheel Only)
	6856M	Fitting, Grease
7	9040H	Bearing, Flange (Front Wheel Only)
8	104757X	Cap, Axle (Front Wheel Only)

NOTE: All component dimensions given in U.S. inches
1 inch = 25.4 mm

REPAIR PARTS

22 HP 50" TRACTOR - - MODEL NUMBER 917.257740

ELECTRICAL



REPAIR PARTS

22 HP 50" TRACTOR - - MODEL NUMBER 917.257740

ELECTRICAL

KEY NO.	PART NO.	DESCRIPTION
1	125603X	Battery
2	74760412	Bolt, Hex 1/4-20 x 3/4
3	STD551025	Washer 9/32 x 5/8 x 16 Ga.
4	STD551125	Washer, Lock 1/4
5	121264X	Caps, Battery
6	STD541025	Nut, Hex 1/4-20
7	7697J	Tube, Drain
8	7603J	Tray, Battery
9	109596X	Clamp, Hose
10	72240460	Bolt, Carriage 1/4-20 x 7-1/2
11	102476X	Guard, Terminal
12	123198X	Nut, Wing 1/4-20
19	10090400	Washer, Lock 1/4
20	73350400	Nut, Hex Jam 1/4-20
21	127441X	Harness, Light Socket
22	4152J	Bulb, Headlight
23	11150400	Washer, Lock, Int. Tooth
24	4014J	Cable, Battery
25	120605X	Cable Battery
26	108824X	Fuse
28	120606X	Cable, Ground
29	121305X	Switch, Plunger
30	140399	Switch, Ignition
31	140400	Nut, Ignition
32	141226	Cover, Switch Key
33	140403	Key, Ignition
34	110712X	Switch, Light
38	140660	Harness Adapter
40	144312	Harness, Ignition
41	17720408	Screw, Hex Washer Head, Thread Cutting 1/4-20 x 1/2
42	131563	Cover, Terminal
43	138406	Solenoid
45	122822X	Ammeter
50	140404	Switch, P.T.O.
51	140405	Ring Retainer PTO
53	71031008	Screw, Hex Washer Head #10-32x1/2
54	73951000	Nut, Keps #10-32
55	104445X	Switch, Intlk Cl Grd Gry 2 Term

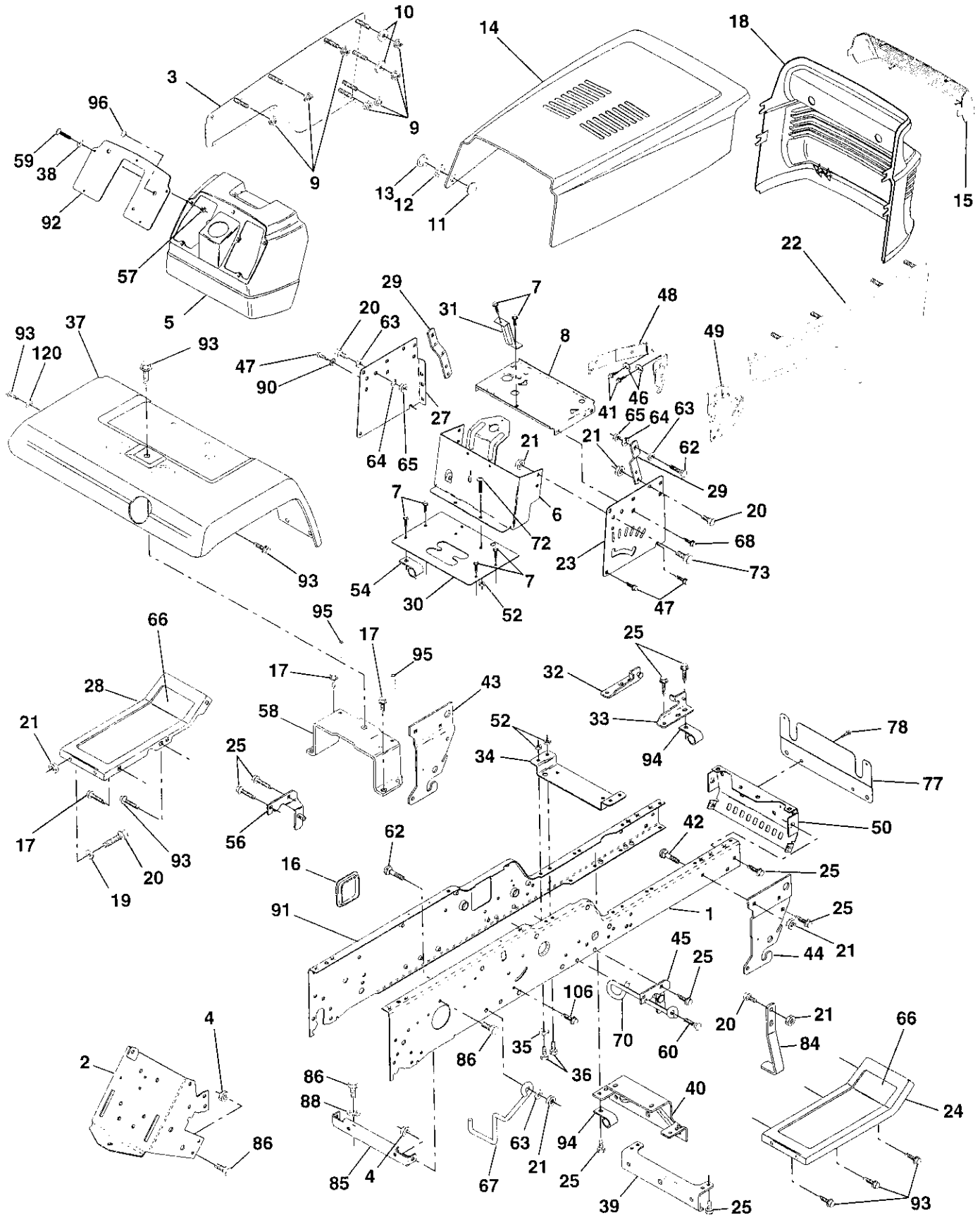
NOTE: All component dimensions given in U.S. inches

1 inch = 25.4 mm

REPAIR PARTS

22 HP 50" TRACTOR -- MODEL NUMBER 917.257740

CHASSIS AND ENCLOSURES



REPAIR PARTS

22 HP 50" TRACTOR - - MODEL NUMBER 917.257740

CHASSIS AND ENCLOSURES

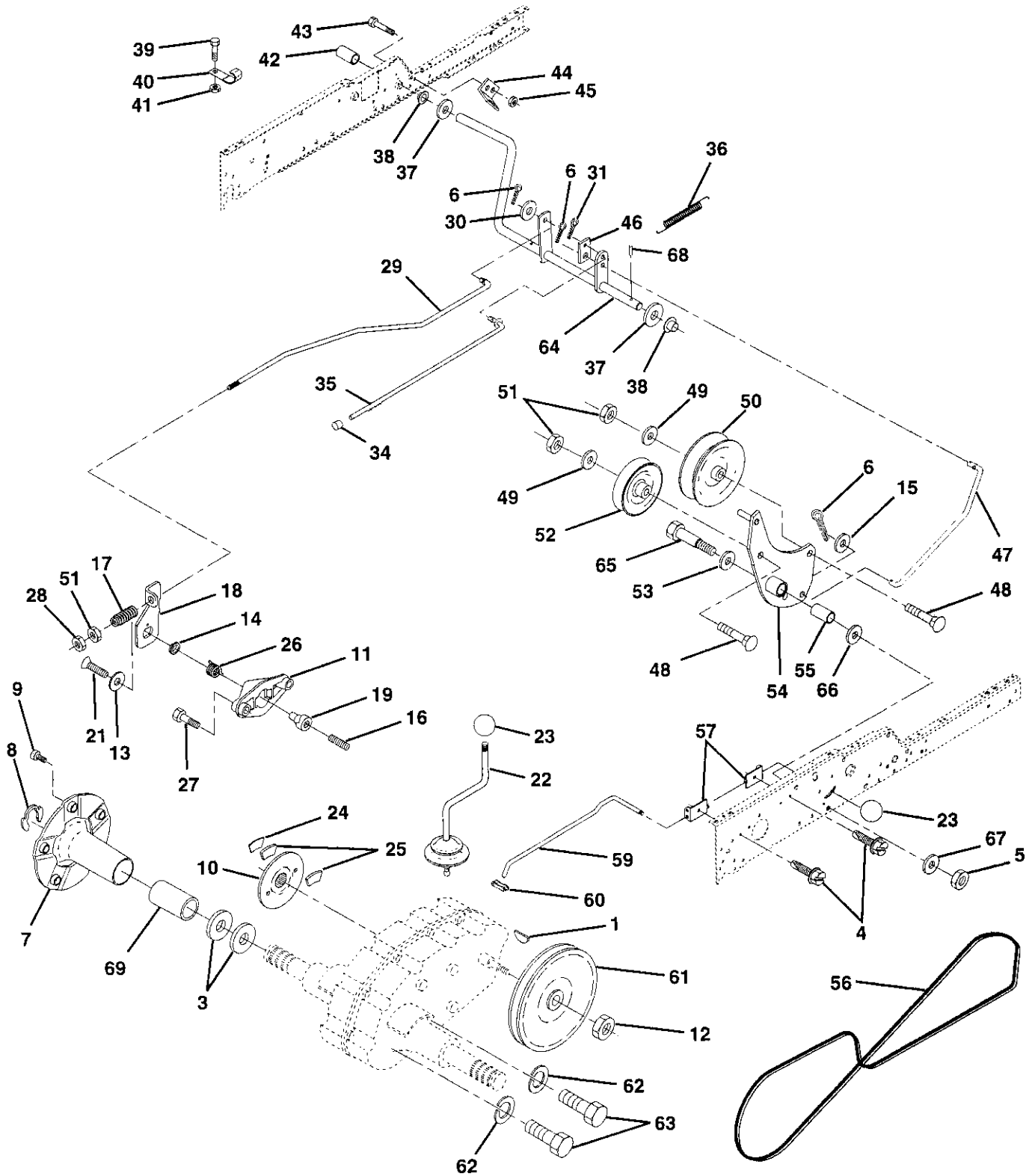
KEY NO.	PART NO.	DESCRIPTION	KEY NO.	PART NO.	DESCRIPTION
1	140505	Rail, Frame RH	42	72140608	Bolt, Carriage 3/8-16 x 1
2	140506	Drawbar, Gt	43	136939	Bracket, Spnsn Front Lh
3	136671X459	Panel Asm., Side LH	44	136940	Bracket, Spnsn Front Rh
4	73800700	Nut, Lock Hex 7/16 Unc	45	138460	Bracket Asm., Susp Chassis Rh
5	136696	Dash, Plastic Black	46	10040400	Washer, Lock Hvy Helical 1/4
6	139420	Dash Asm., Lower	47	17490608	Screw Thdrol. 3/8-16 x 1/2
7	17720408	Screw, Thd Cut 1/4-20 x 1/2	48	142133	Bracket Asm., Pivot Hood Lh
8	140229	Support, Battery	49	142134	Bracket Asm., Pivot Hood Rh
9	108067X	Nut, Pal	50	136575	Bracket, Chassis Front
10	19092016	Washer 9/32 x 1-1/4 x 16 Ga.	52	73800500	Locknut, Hex W/Ins 5/16-18 Unc
11	137270	Rivet, Ratchet Male	54	126470X	Clip, Insulated
12	137269	Washer, Nylon	56	138461	Bracket Asm., Susp Chassis Lh
13	137271	Rivet, Ratchet Female	57	73510400	Nut, Keps Hex 1/4-20
14	136673X459	Hood Asm., Pnt	58	137113	Bracket Asm., Fender
15	136374	Lens, Bar Clear	59	74180412	Screw, Mach Cr 1/4-20 x 3/4
16	121794X	Cover, Access	60	17490620	Screw Thdrol. 3/8-16 x 1-1/4
17	17490612	Screw, Thdrol 3/8-16 x 3/4	62	72110608	Bolt, Carriage 3/8-16 x 1 Gr. 5
18	136373X428	Grille	63	19131614	Washer 13/32 x 1 x 14 Ga.
19	19131312	Washer 13/32 x 13/16 x 12 Ga.	64	10040600	Washer, Lock Hvy Hlcl Spr 3/8
20	74760616	Bolt, Fin Hex 3/8-16 x 1	65	73220600	Nut, Fin Hex 3/8-16 Unc
21	73800600	Nut, Lock Hex W/Wsh 3/8-16 Unc	66	105466X	Pad, Footrest
22	136670X459	Panel Asm., Side RH	67	140737	Guide, Belt T/A
23	121045X	Panel, Dash Side RH	68	17490508	Screw Thdrol. 5/16-18 x 1/2
24	105464X459	Footrest, RH	70	137159	Guide, Belt Mid Span
25	17490612	Screw, Thdrol 3/8-16 x 3/4	72	74180512	Screw, Mach Trhd 5/16-18 x 3/4
27	121046X	Panel, Dash Side LH	73	74780616	Bolt, Fin Hex 3/8-16 x 1 Gr. 5
28	105465X459	Footrest, LH	77	137308	Shield, Front
29	138193	Bracket, Support Dash	78	17720408	Screw, Thd. Cut 1/4-20 x 1/2
30	137143X014	Saddle, Silscr Vgt	84	142992	Stop, Over Center Mower
31	137556	Brace, Support Steering	85	120404X	Bracket, Support Transaxle
32	141315	Bracket Asm., Frame Pivot Lh	86	74760716	Bolt, Fin Hex 7/16-14 Unc x 1
33	141314	Bracket Asm., Frame Pivot Rh	88	10040700	Washer, Lock Hvy Hlcl Spr 7/16
34	142131	Bracket, Engine Support Rear	90	11050600	Washer, Lock External Tooth 3/8
35	19111116	Washer 11/32 x 11/16 x 16 Ga.	91	140504	Rail, Frame Lh
36	74780512	Bolt, Fin Hex 5/16-18 x 3/4	92	143485X013	Plate, Silkscreen Dash
37	121642X459	Fender, Pnt.	93	17490608	Screw, Thdrol 3/8-16 x 1/2
38	19091216	Washer 9/32 x 3/4 x 16 Ga.	94	100207K	Clip, Fuel Line
39	136961	Bracket, Axle Front	95	105531X	Push Nut, Nylon
40	142132	Bracket, Support Axle/Engine	96	8022J	Plug, Hole
41	74760408	Bolt, Fin Hex 1/4-20 Unc x 1/2	106	17580520	Bolt 5/16-18 x 1-1/4
			120	19131616	Washer 13/32 x 1 x 16 Ga.

NOTE: All component dimensions given in U.S. inches
1 inch = 25.4 mm

REPAIR PARTS

22 HP 50" TRACTOR - - MODEL NUMBER 917.257740

GROUND DRIVE



REPAIR PARTS

22 HP 50" TRACTOR - - MODEL NUMBER 917.257740

GROUND DRIVE

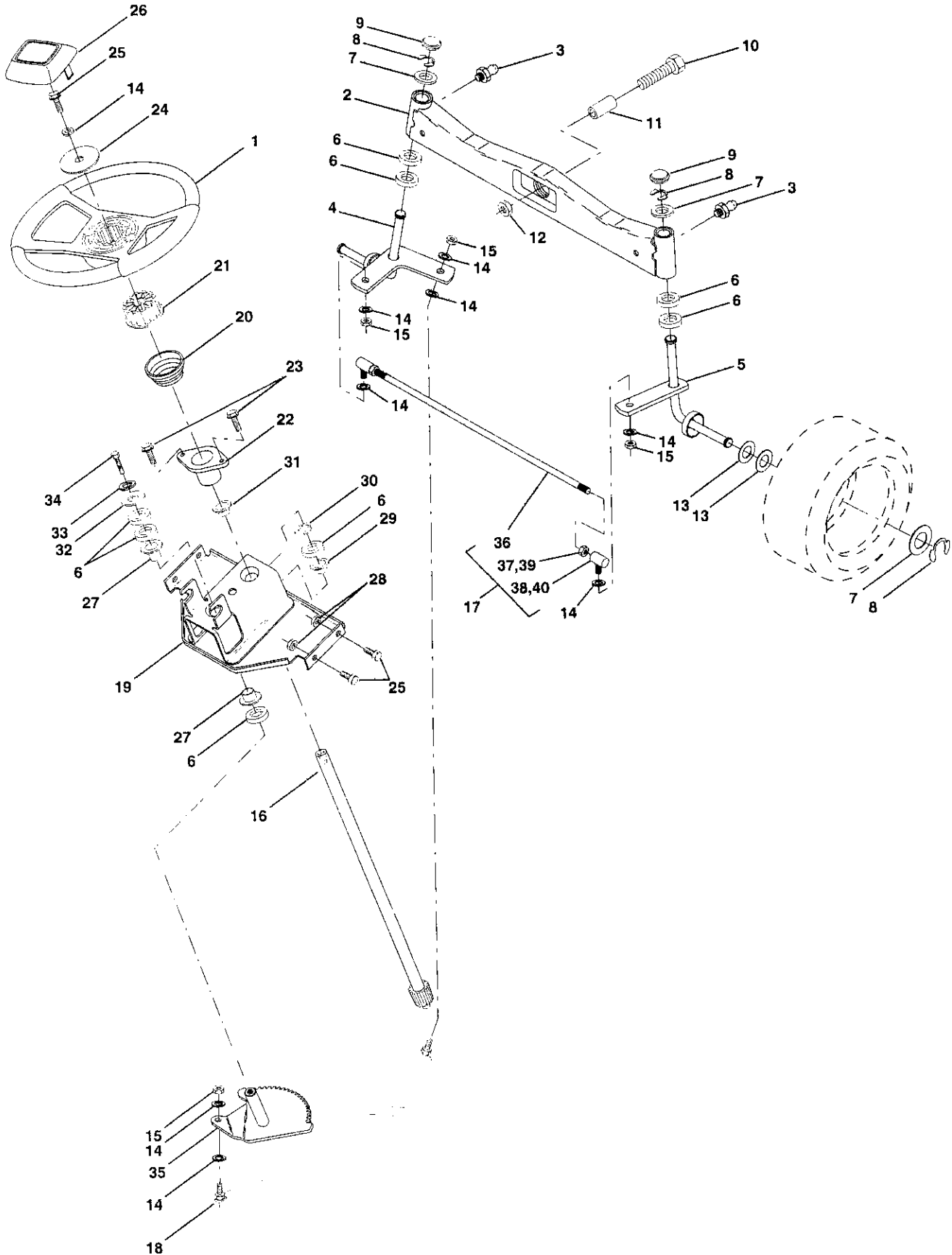
KEY NO.	PART NO.	DESCRIPTION	KEY NO.	PART NO.	DESCRIPTION
1	9858M1	Key, Woodruff	38	110895X	Nyliner
3	7563R	Washer, Thrust, Axle	39	74321016	Screw, Fin. #10-24 x 1
4	17490508	Screw Thdrol 5/16-18 x 3/4	40	5304J	Actuator, Interlock Switch
5	73680600	Nut, Crownlock 3/8-16	41	73631000	Locknut #10-24
6	76020412	Pin, Cotter	42	8883R	Cover, Pedal
7	135758	Wheel, Hub Assembly	43	74760412	Bolt, Hex 1/4-20 x 3/4
8	12000034	Klip, Ring	44	104601X	Bracket, Interlock
9	140080	Bolt, Hub	45	73800400	Locknut w/Insert 1/4-20
10	143046	Disc, Brake	46	121358X	Retainer, Spring
11	136927	Yoke, Brake Disc	47	138228	Clutch Rod
12	9204H	Locknut 1/2-20	48	72110614	Bolt, Carriage 3/8-16 x 1-3/4 Gr. 5
13	139419	Washer, Special	49	19131413	Washer 13/32 x 7/8 x 13 Ga.
14	138901	Bushing	50	131494	Pulley, Idler, Flat
15	19131316	Wahser 13/32 x 13/16 x 16 Ga.	51	73800600	Locknut, Hex 3/8-16
16	143012	Set, Screw 1/4-28 x 3/4	52	139123	Pulley, Idler, Grooved
17	126909X	Spring	53	207J	Washer, Hardened
18	137104	Lever, Brake	54	138390	Clutch, Arm Assembly
19	136926	Cam, Brake Disc	55	105706X	Bearing, Idler
21	23260412	Screw, Flat Head 1/4-28 x 3/4	56	137153	V-Belt
22	633A109	Gearshift, Lever Assembly	57	141756	Bracket, Shift Rod, Hi-Lo
23	106932X	Knob	59	122253X	Shift Rod, Hi-Lo
24	136925	Support, Puck Brake	60	122268X	Spring Clip, Connecting Link
25	136923	Puck, Brake Top	61	137524	Pulley, Transaxle
26	137552	Spring, Return	62	10040700	Washer, Lock 7/16
27	17490528	Screw, Hex Wsh Thd. 5/16-18 x 1-3/4	63	74760720	Bolt, Fin Hex 7/16-14 x 1-1/4
28	73350600	Nut, Hex Jam 3/8-16	64	137649	Shaft, Clutch/Brake Pedal
29	137213	Brake, Rod	65	67609	Bolt, Shoulder
30	19131614	Washer 13/32 x 1 x 14 Ga.	66	140296	Washer, Hardened
31	76020312	Pin, Cotter 3/32 x 3/4	67	19131312	Washer, Flat
34	124236X	Cap, Plunger	68	5142H	Pin, Roll
35	137648	Rod, Parking Brake	69	136327	Hub, Cover
36	138364	Spring, Extension			
37	121749X	Washer 25/32 x 1-1/4 x 16 Ga.			

NOTE: All component dimensions given in U.S. inches
1 inch = 25.4 mm

REPAIR PARTS

22 HP 50" TRACTOR -- MODEL NUMBER 917.257740

STEERING ASSEMBLY



REPAIR PARTS

22 HP 50" TRACTOR - - MODEL NUMBER 917.257740

STEERING ASSEMBLY

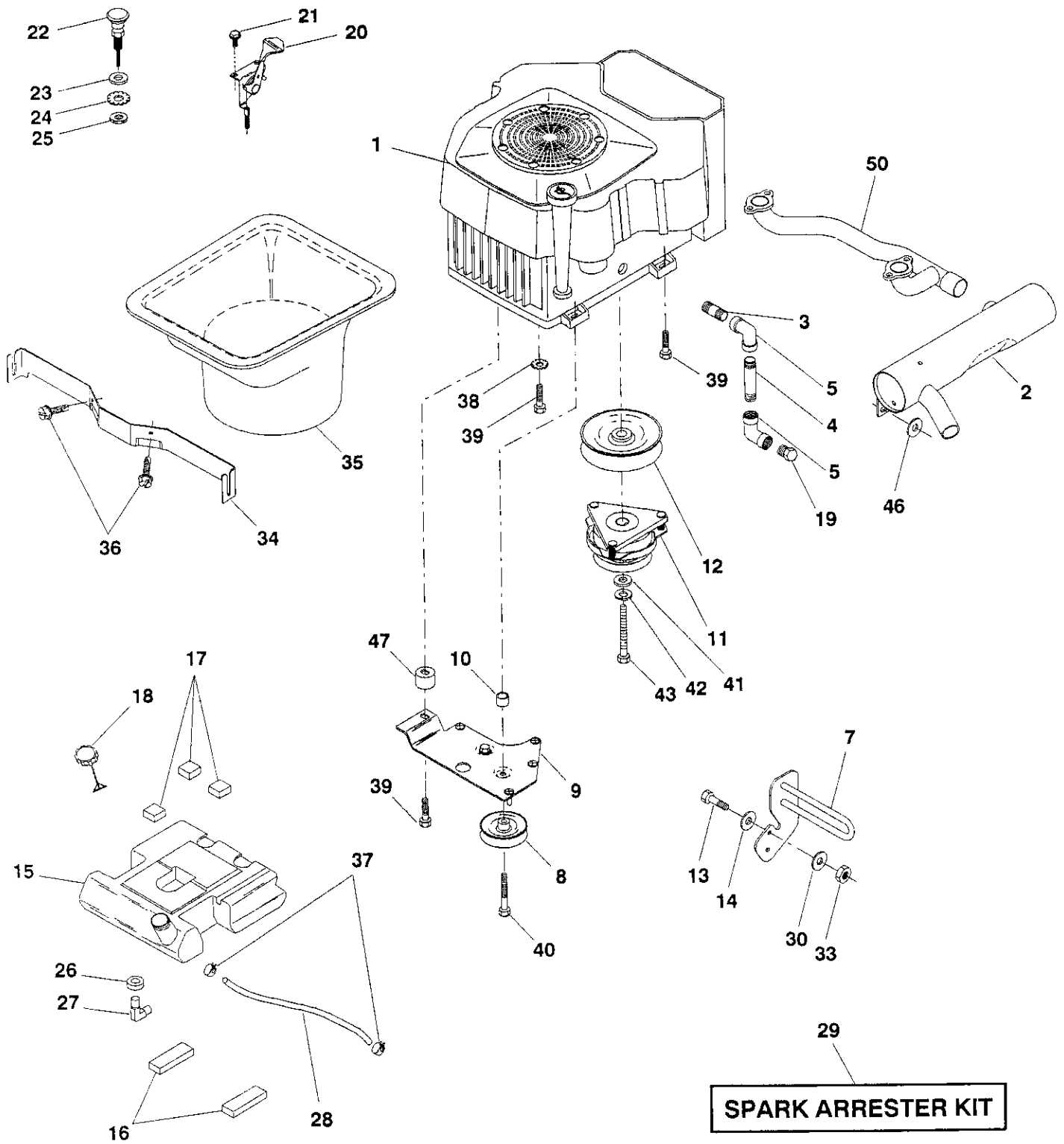
KEY NO.	PART NO.	DESCRIPTION
1	121472X	Wheel, Steering
2	137094	Axle Asm., Front
3	6855M	Fitting, Grease
4	136960	Spindle Asm, LH
5	136959	Spindle Asm., RH
6	6266H	Bearing, Race Thrust Harden
7	121748X	Washer 25/32 x 1-5/8 x 16 Ga.
8	12000029	Ring, Klip #T5304-75
9	121232X	Cap, Spindle
10	74781044	Bolt, Fin Hex 5/8-11 x 2-3/4
11	136518	Spacer, Brg. Axle Front
12	73901000	Nut, Lock Flange 5/8-11 Unc
13	121749X	Washer 25/32 x 1-1/4 x 16 Ga.
14	10040600	Washer, Lock Hvy Hlcl Spr 3/8
15	73610600	Nut, Fin Hex 3/8-24 Unf
16	102458X	Shaft Asm., Steering
17	137347	Rod Asm., Tie Ball J Ball Vgt (Inc. Key No. 36-40)
18	137155	Draglink, Ball Joint Solid Vgt
19	138053	Support Asm., Steering Vgt
20	139811	Column, Steering
21	100711L	Adapter, Wheel Steering
22	1554J	Bushing, Strg. Blk
23	17431008	Screw, Slftp #10-16 x 1/2 Ty-b
24	19133808	Washer 13/32 x 2-3/8 x 8 Ga.
25	74780616	Bolt, Fin Hex 3/8-16 x 1 Gr. 5
26	126805X	Cap, Wheel Steering
27	3366R	Bearing, Col. Strg.
28	73800600	Nut, Lock Hex W/Wsh 3/8-16 Unc
29	104239X	Bearing, Flange
30	12000034	Ring, Klip Truarc #5304-75
31	138136	Bushing, Nyliner Snap
32	19111610	Washer 11/32 x 1 x 10 Ga.
33	10040500	Washer, Lock Hvy Hlcl Spr 5/16
34	74760512	Bolt, Hex Hd 5/16-18 x 3/4
35	138059	Gear, Sector Steering
36	137156	Tie Rod
37	73360600	Jam Nut RH Thread
38	109850X	Joint Asm. Ball RH Thread
39	73700600	Jam Nut LH Thread
40	109851X	Joint Asm. Ball LH Thread

NOTE: All component dimensions given in U.S. inches
1 inch = 25.4 mm

REPAIR PARTS

22 HP 50" TRACTOR - - MODEL NUMBER 917.257740

ENGINE



REPAIR PARTS

22 HP 50" TRACTOR - - MODEL NUMBER 917.257740

ENGINE

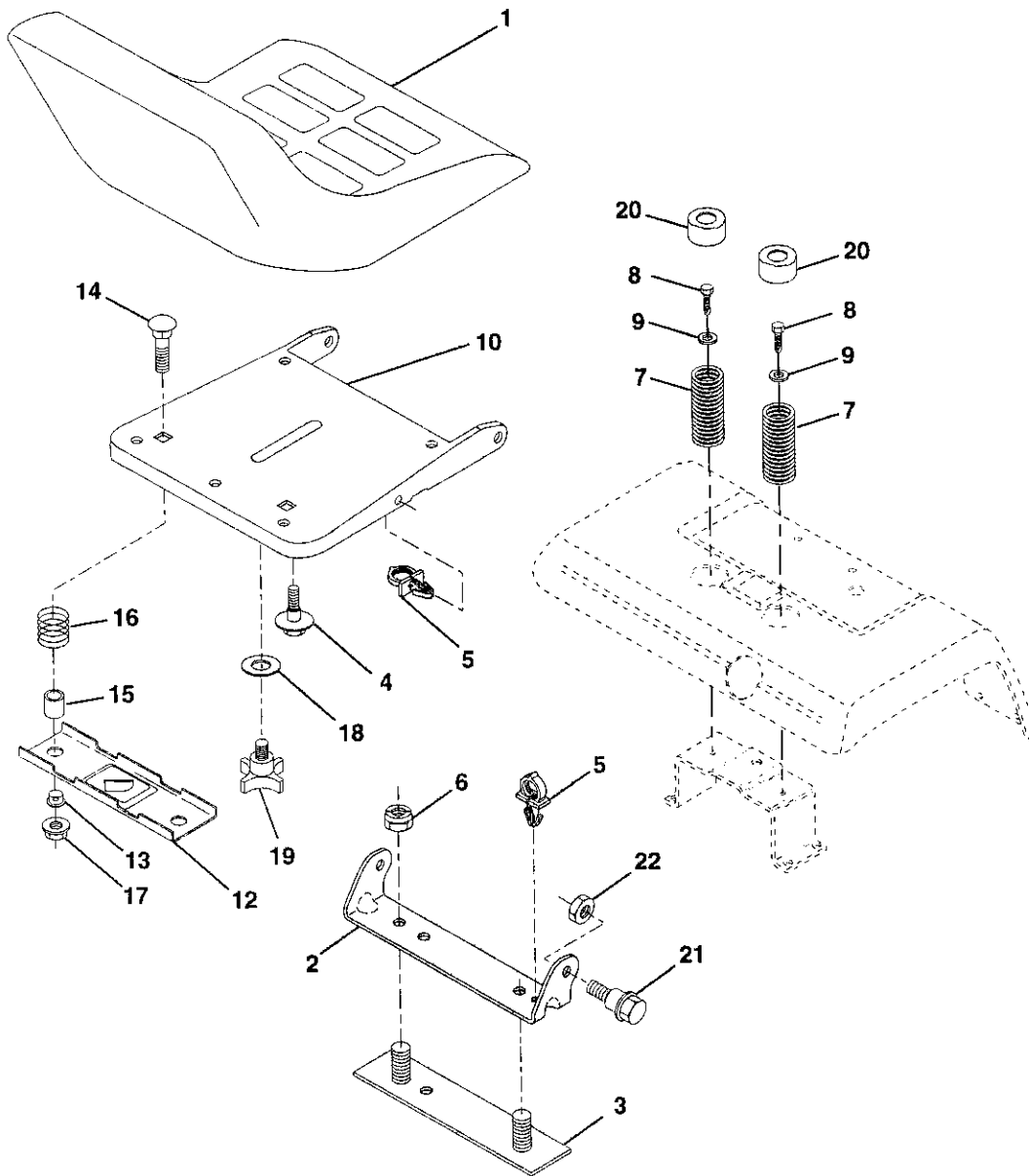
KEY NO.	PART NO.	DESCRIPTION
1	140847	Engine Kohler 22 CV22 PS-67515
2	144636	Muffler Asm
3	13090308	Elbow Nipple Pipe 3/8 x 1
4	13090336	Nipple Pipe 3/8NPT X 4-1/2
5	13200300	Elbow STD 90 Degree 3/8 - 18 NPT
7	143599	Muffler Asm Guard
8	121361X	Pulley V-Idler
9	138559	Stop Keeper Asm VGT
10	105432X	Bushing
11	140923	Clutch Electric
12	143996	Pulley Engine VGT Elect Clutch
13	74780624	Bolt Fin Hex 3/8 - 16 x 1-1/2
14	19131414	Washer Flat 13/32 x 7/8 x 14 Ga.
15	141069	Tank Fuel W/Sym Vented
16	109227X	Pad Spacer
17	106082X	Pad Spacer
18	123549X	Cap Asm Fuel W/Sym Vented
19	13290300	Plug Oil Drain (Order From Engine Manufacturer)
20	132755	Control Throttle
21	17720410	Screw Hex Thd Cut 1/4 - 20 X 5/8
22	132779	Control Choke
23	19132616	Washer 13/32 X 1 - 5/8 X 16 Ga
24	11050600	Washer Ext Tooth 3/8
25	73610600	Nut Fin Hex 3/8 - 24 UNF
26	3645J	Bushing
27	139277	Stem Tank Fuel
28	7834R	Fuel Line
29	132920	Spark Arrester Kit
30	19131414	Washer 13/32 x 1-1/4 x 7 Ga.
33	73800600	Nut Lock Hex w/Ins. 3/8 - 16
34	143528	Bracket Duct Air Rear Sup
35	143020	Duct Air
36	17580408	Screw Tap 1/4 - 20 x 1/2
37	123487X	Clamp Hose
38	11050600	Lockwasher Ext Tooth 3/8
39	144242	Screw Hex Flg Hd
40	74780668	Screw 3/8 - 16 x 4-1/4
41	126197X	Washer 1-1/2 OD X 15/32 ID X .250
42	10040700	Washer Lock 7/16
43	71170768	Bolt Hex 7/16 - 20 X 4 - 1/4 Ga 5
46	19131616	Washer 13/32 x 1 x 16 Ga.
47	142040	Spacer Engine
50	140787	Pipe Crossover

NOTE: All component dimensions given in U.S. inches
1 inch = 25.4 mm

REPAIR PARTS

22 HP 50" TRACTOR - MODEL NUMBER 917.257740

SEAT ASSEMBLY



KEY NO.	PART NO.	DESCRIPTION
1	127439	Seat
2	140551	Bracket, Pivot Seat
3	140675	Strap, Fender
4	127018X	Bolt, Shoulder 5/16-18 x .62
5	140407	Clip, Push In
6	73680600	Nut, Crownlock 3/8-16 Unc
7	124181X	Spring, Seat Cprsn
8	17490508	Screw, Thdrol 5/16-18 X 1/2
9	19131614	Washer 13/32 X 1 X 14 Ga.
10	140552	Pan, Seat
12	121246X	Bracket, Mounting Switch
13	121248X	Bushing, Snap

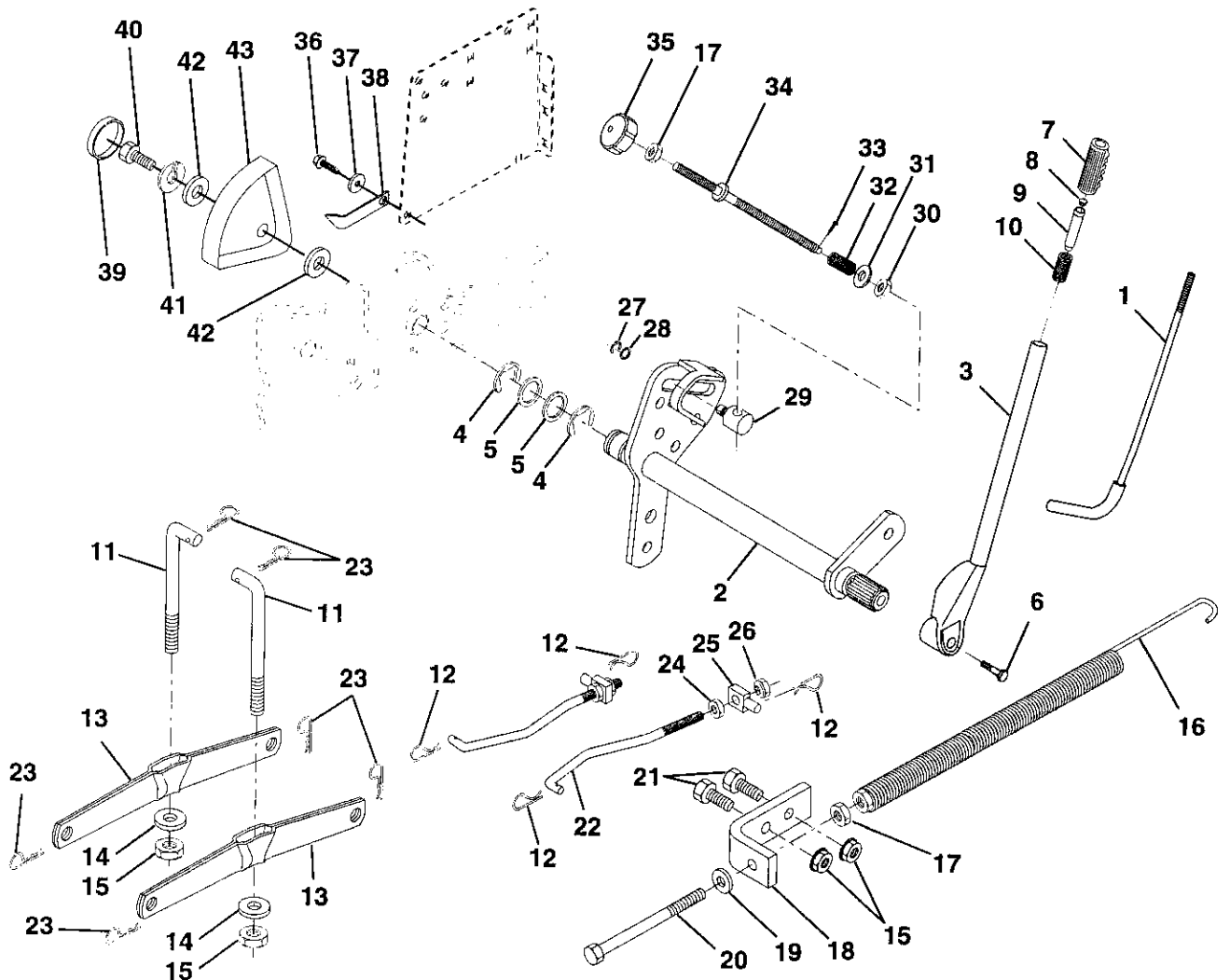
KEY NO.	PART NO.	DESCRIPTION
14	72050411	Bolt, Carriage 1/4-20 X 1-3/8
15	121249X	Spacer, Split
16	123740X	Spring, Cprsn
17	123976X	Nut, Lock 1/4 Lge Flg Gr. 5
18	19171912	Washer 17/32 x 1-3/16 x 12 Ga.
19	120068X	Knob, Seat 1/2-13 Unc
20	124238X	Cap, Spring Seat
21	139888	Bolt, Shoulder 5/16-18
22	73680500	Nut, Crownlock 5/16-18 Unc

NOTE: All component dimensions given in U.S. inches
1 inch = 25.4 mm

REPAIR PARTS

22 HP 50" TRACTOR - MODEL NUMBER 917.257740

LIFT ASSEMBLY



KEY NO.	PART NO.	DESCRIPTION
1	121006X	Rod Asm., Lever
2	137295	Shaft Asm., Lift Vgt
3	121002X	Lever Asm., Lift Rh
4	12000022	E-Ring Truarc #5133-87
5	19292016	Washer 29/32 x 1-1/4 x 16 Ga.
6	74780624	Bolt, Fin Hex 3/8-16 x 1-1/2
7	125631X	Grip, Handle Fluted
8	122365X	Button, Plunger
9	122364X	Plunger, Lever Lift
10	2876H	Spring 2-1/8"
11	142369	Link Lift
12	3146R	Retainer, Spring
13	139867	Arm, Suspension Vgt
14	140302	Bearing
15	73800600	Nut, Lock Hex W/Wsh 3/8-16 Unc
16	674A247	Spring Asm., Assist Lift
17	73350600	Nut, Hex Jam 3/8-16 Unc
18	143363	Bracket, Spring Assist
19	19131316	Washer 13/32 x 13/16 x 16 Ga.
20	5328J	Bolt, Adjust Spring Assist
21	74760616	Bolt, Fin Hex 3/8-16 x 1
22	127218	Link, Front
23	4939M	Retainer, Spring

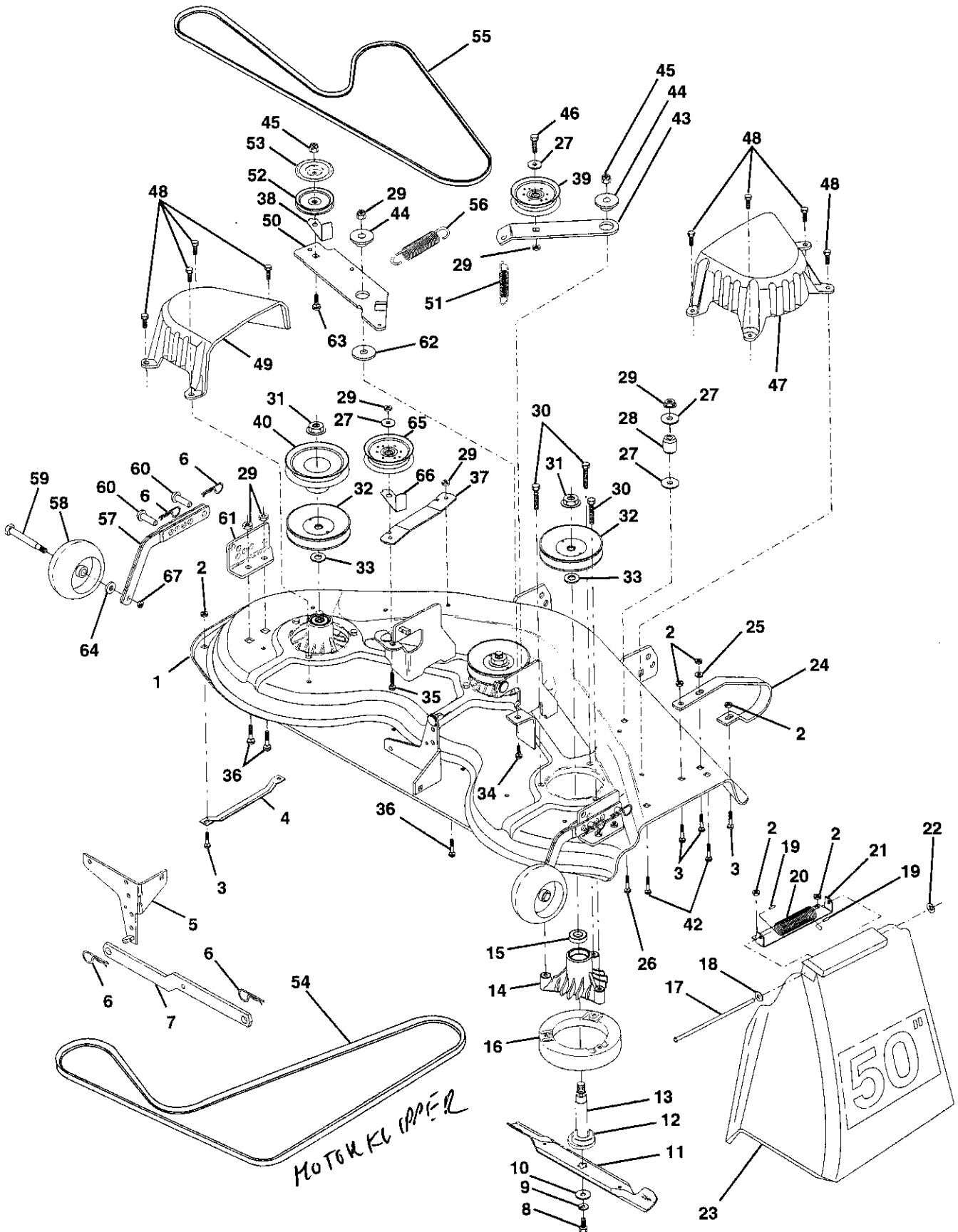
KEY NO.	PART NO.	DESCRIPTION
24	73350800	Nut, Jam Hex 1/2-13 Unc
25	130171	Trunnion
26	73800800	Nut, Lock W/Wsh 1/2-13 Unc
27	12000037	Ring, Klip #T5304-37
28	19151216	Washer 15/32 x 3/4 x 16 Ga.
29	110810X	Trunnion, Dp Stop Dbl Thds Plt
30	110807X	Nut, Special
31	19131016	Washer 13/32 x 5/8 x 16 Ga.
32	137150	Spring, Compression Inf Hgt
33	76020308	Pin, Cotter 3/32 x 1/2
34	137167	Rod, Adj Lift
35	138057	Knob, Inf 3/8-16 Unc
36	17490612	Screw, Thdrol 3/8-16 x 3/4
37	120529X	Washer, Nylon
38	123933X505	Pointer, Pnt Height Indicator
39	123935X	Plug, Hole
40	17490516	Screw Hex Wsh 5/16-18 x 1
41	10040500	Washer, Lock Hvy Hlcl Spr 5/16
42	19112410	Washer 11/32 x 1-1/2 x 10 Ga.
43	123934X	Scale, Indicator Height

NOTE: All component dimensions given in U.S. inches
1 inch = 25.4 mm

REPAIR PARTS

22 HP 50" TRACTOR - MODEL NUMBER 917.257740

50" MOWER DECK



MOTOK KL UPPER

REPAIR PARTS

22 HP 50" TRACTOR - MODEL NUMBER 917.257740

50" MOWER DECK

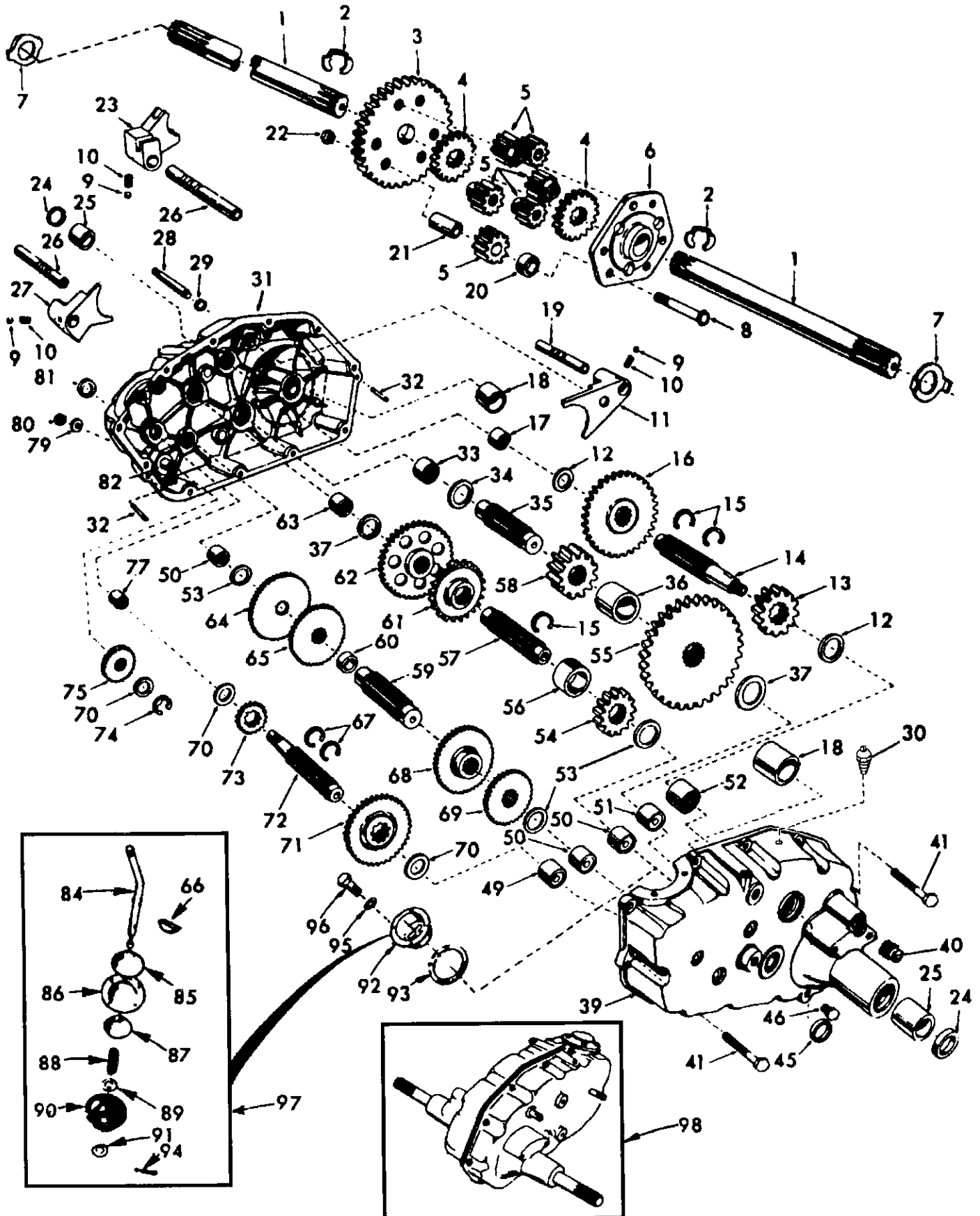
KEY NO.	PART NO.	DESCRIPTION	KEY NO.	PART NO.	DESCRIPTION
1	136457	Deck Asm., Mower 50" Vented	37	137166	Stiffener, Arm Idler
2	73800500	Locknut, Hex W/Ins 5/16-18 Unc	38	137554	Keeper, Belt Idler
3	72110506	Bolt, Carriage 5/16-18 x 3/4	39	131494	Pulley, Idler Flat
4	7631J	Runner, Mower LH	40	136572	Pulley, Driven
5	138457	Bracket Asm., Sway Bar	42	72140506	Bolt, Carriage 5/16-18 Unc x 3/4
6	4939M	Retainer, Spring	43	136460	Arm, Idler Secondary
7	130832	Arm Suspension, Rear	44	122052X	Spacer, Retainer
8	850857	Bolt 3/8-24 x 1.25 Gr. 8 Patched	45	73680600	Nut, Crownlock 3/8-16 Unc
9	10030600	Washer, Lock Hvy 3/8 Unplated	46	74760628	Bolt, Fin Hex 3/8-16 Unc x 1-3/4
10	140296	Washer, Hard Blade Mower Vented	47	137200	Cover, Mandrel RH
11	137380	Blade	48	137729	Screw, Thd Roll 1/4-20 x 5/8
12	129895	Bearing, Ball #6204 (Mandrel)	49	136574	Cover, Mandrel LH
13	137553	Shaft Asm., W/Lower Brg (Includes Key No. 12)	50	137272	Arm, Idler Primary
14	137152	Housing, Mandrel 44" Vent	51	137273	Spring, Secondary
15	110485X	Bearing, Ball Mandrel	52	139245	Pulley, Idler V Groove
16	140329	Stripper, Mower Vented	53	137789	Shield, Idler
17	106735X	Rod, Hinge	54	139573	V-Belt, Mower Primary
18	19111016	Washer 11/32 x 5/8 x 16 Ga.	55	138255	V-Belt, Mower Secondary
19	105304X	Cap, Sleeve	56	138687	Spring, Primary
20	123713X	Spring, Torsion Deflector	57	136577	Bar Asm., Wheel Gauge
21	137607	Bracket, Deflector	58	133957	Wheel, Gauge
22	110452X	Nut, Push	59	137644	Bolt, Shoulder
23	110509X	Shield, Deflector Mower	60	139031	Pin, Clevis
24	136320	Runner, RH	61	136573	Bracket, Wheel Gauge
25	19111216	Washer 11/32 x 3/4 x 16 Ga.	62	133943	Washer Hardened
26	72110614	Bolt, Carriage 3/8-16 x 1-3/4 Gr. 5	63	72110612	Bolt Carriage 3/8-16 x 1-1/2
27	19131316	Washer 13/32 x 13/16 x 16 Ga.	64	19121414	Washer 3/8 x 3/4 x 14Ga
28	132823	Spacer, Spring Stop Idler	65	102403X	Pulley Idler Flat
29	73800600	Nut, Lock Hex W/Wsh 3/8-16 Unc	66	139622	Keeper Belt Idler
30	138776	Screw Thdrol Hex Hd	67	73930600	Nut, Centerlock 3/8-16
31	137266	Nut, Flg Top Lock Cntr 9/16	--	143651	Mandrel Asm Service (Includes Key Nos. 8-10, 12-15, 31 and 33)
32	129861	Pulley, Mandrel	--	141051	Mower Asm. Service (Std. Deck- Order all gauge wheel components separately)
33	129963	Washer, Spacer Mower Vented			
34	72140610	Bolt, Carriage 3/8-16 x 1-1/4			
35	72110616	Bolt, Carriage 3/8-16 x 2			
36	72110608	Bolt, Carriage 3/8-16 x 1 Gr. 5			

NOTE: All component dimensions given in U.S. inches
1 inch = 25.4 mm

REPAIR PARTS

22 HP 50" TRACTOR - MODEL NUMBER 917.257740

TRANSAXLE



REPAIR PARTS

22 HP 50" TRACTOR - MODEL NUMBER 917.257740

TRANSAXLE

KEY PART NO. NO.	DESCRIPTION	KEY PART NO. NO.	DESCRIPTION
1 4197R	Axle Shaft	52 8119M	Needle Bearing
2 12000034	Retaining Ring	53 4220R	Thrust Bearing Race
3 4199R	Final Drive Gear	54 4209R	3rd Reduction Pinion, Low
4 4216R	Differential Gear	55 4213R	4th Reduction Gear
5 4215R	Differential Pinion	56 4442R	3rd Reduction Pinion Spacer
6 4217R	Differential Carrier	57 4195R	2nd Reduction Gear Shaft
7 6256H	Axle Thrust Washer	58 4214R	Final Drive Pinion
8 74020652	Bolt, Hex Head 3/8-24 x 3-1/4 (1" Thread Length)	59 4194R	1st Reduction Gear Shaft
9 7392M	Steel Ball	60 7528R	1st Reduction Shaft Spacer
10 137261	Spring Shift Fork Detent	61 4208R	3rd Reduction Pinion High
11 4985R	Shift Fork, High-Low Range	62 4207R	2nd Reduction Gear
12 6266H	Thrust Bearing Race	63 7398H	Needle Bearing
13 4212R	4th Reduction Pinion	64 4203R	Low Speed Gear and 2nd Reduction Pinion Cluster
14 137125	Shaft, Brake	65 4204R	Reverse Gear
15 6276H	Snap Ring, Crescent Type	66 2898J	Key, Hi-Pro 1/8 x 17/32
16 633A63	High-Low Range Gears	67 12000033	Klip Ring
17 8118M	Needle Bearing	68 4205R	Intermediate Speed Gear
18 8740H1	Sintered Iron Bearing	69 4206R	High Speed Gear
19 122238X	Shift Fork Shaft, High-Low Range	70 1370H	Thrust Bearing Race
20 4218R	Differential Pinion Spacer	71 633A69	Intermediate and High Speed Cluster Pinions
21 6252H1	Differential Pinion Bushing	72 139120	Input Shaft
22 7810H	Gripco Centerlock Nut 3/8-24	73 4201R	Low Speed Pinion
23 6262H	Shift Fork, R.H.	74 12000008	E-Ring
24 7393R	Oil Seal	75 1153R	Reverse Idler Gear
25 992R1	Sintered Iron Bearing	77 6803J	Needle Bearing
26 139111	Shift Fork Shaft	79 1167R	Sealing Washer
27 4986R	Shift Fork, L.H.	80 73360700	Nut, Hex, Jam 7/16-20
28 122254X	Shift Shaft, High-Low Range	81 6270H	Oil Seal
29 6269H	Oil Seal	82 136984	Reverse Idler Shaft
30 5855H	Pressure Relief Valve	84 5384J	Gearshift Lever, Bent
31 139538	Gearcase, Reverse Idler Shaft and Bearings, R.H. (Includes Key No.'s 17, 18, 25, 33, 50, 63, 77 and 82)	85 2978J	Gearshift Cap
32 6277H	Dowel Pin	86 633A85	Gearshift Ball Cover and Pin
33 4225R	Needle Bearing	87 8739H1	Shift Lever Guide Ball, Keyed
34 7396H	Thrust Bearing Race	88 4924H	Spring
35 4198R	4th Reduction Gear Shaft	89 19151516	Washer 15/32 x 15/16 x 16 Gauge
36 4200R	4th Reduction Gear Spacer	90 110542X	Shift Mechanism Seal
37 7395H	Thrust Bearing Race	91 19181511	Washer 9/16 x 15/16 x 12 Gauge
39 139536	Gearcase and Bearings, L.H. (Includes Key Numbers 18, 25, 49, 50 (2), 51 and 52)	92 75J	Gearshift Gate and Reinforcement
40 13320400	Pipe Plug 1/2-14 N.P.T.	93 6274H	Shift Ball Cover Gasket
41 17580520	Bolt, Hex 5/16-18 UNC x 1-1/4	94 76020412	Cotter Pin 1/8 x 3/4
45 6271H	Oil Seal	95 10040500	Washer, Lock 5/16
46 13060200	Pipe Plug 1/4-18 N.P.T.	96 74760514	Bolt, Hex Head 5/16-18 UNC x 7/8
49 4895H	Needle Bearing	97 633A109	Gearshift Lever Assembly
50 4222R	Needle Bearing	98 139535	Transaxle Assembly (Less Shift Lever)
51 1529R	Needle Bearing		

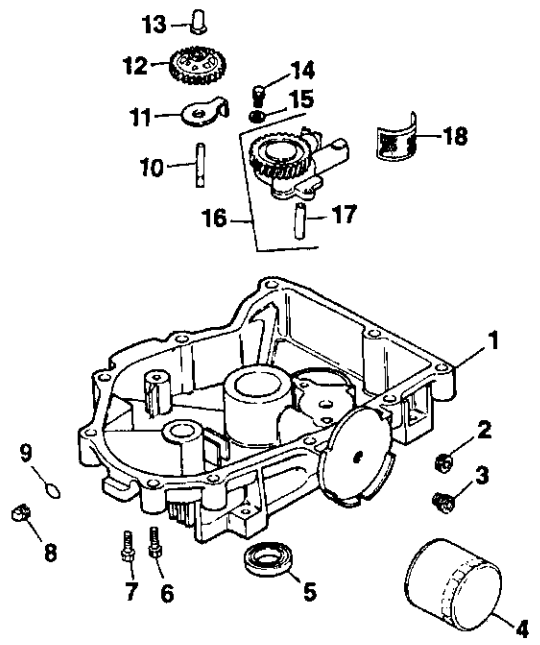
NOTE: All component dimensions given in U.S. inches
1 inch = 25.4 mm

REPAIR PARTS

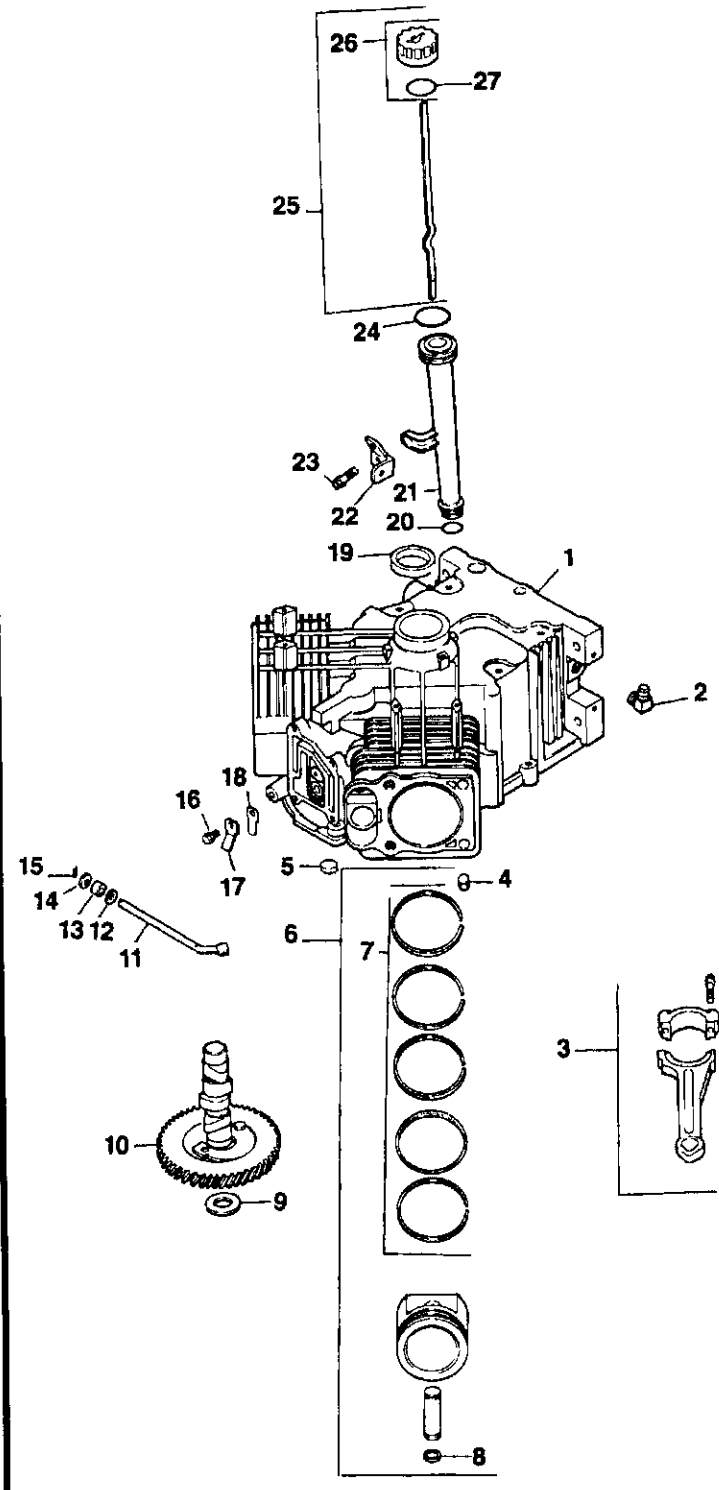
22 HP 50" TRACTOR - MODEL NUMBER 917.257740

KOHLER ENGINE - MODEL NUMBER CV22 - PS67515

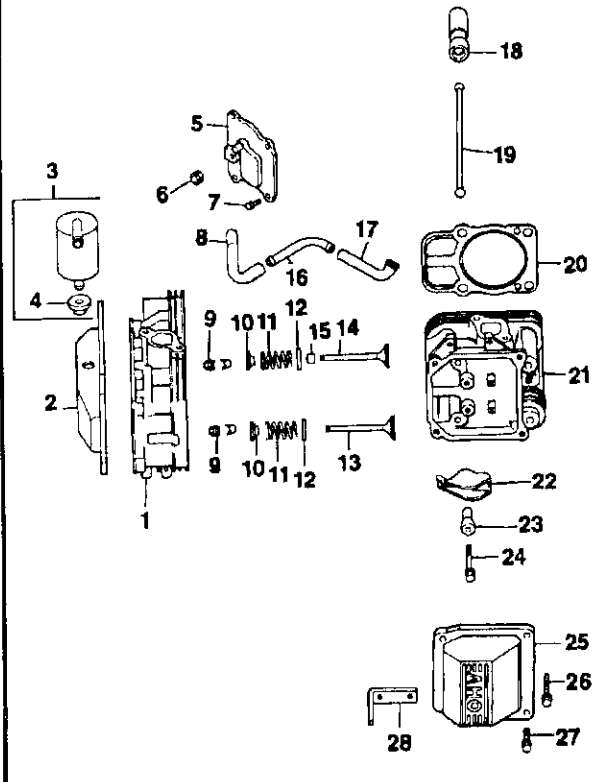
OIL PAN / LUBRICATION



CRANKCASE



CYLINDER HEAD, VALVE AND BREATHER



REPAIR PARTS

22 HP 50" TRACTOR - MODEL NUMBER 917.257740

KOHLER ENGINE - MODEL NUMBER CV22 - PS67515

OIL PAN/LUBRICATION

KEY PART NO. NO.	DESCRIPTION
1 24 199 02	Oil Pan
2 X-75-32	Plug, Hex, Countersunk, 3/8 N.P.T.F.
3 24 136 01	Nipple, Oil Filter
4 12 050 01	Filter, Oil
5 52 032 08	Seal, Oil (PTO End)
6 24 086 17	Screw, Oil Pan M8 x 1.25 x 45
7 24 086 16	Screw, Oil Pan M8 x 1.25 x 45 (9)
8 X-75-10	Plug, Solid, Square Head, 3/8 N.P.T.F.
9 24 153 08	O-Ring
10 12 144 02	Shaft, Governor Gear
11 52 448 02	Tab, Locking
12 24 043 11	Governor Gear Assembly
13 12 380 01	Pin, Governor Regulating
14 M-0645025	Screw M6 x 1.0 x 25 (2)
15 SM-0631005	Washer, Plain (2)
16 24 393 05	Oil Pump Assembly (Includes 17)
17 24 123 05	Tube, Oil Pickup
18 12 162 02	Screen, Oil

CYLINDER HEAD/VALVE/BREATHER

KEY PART NO. NO.	DESCRIPTION
1 24 318 11	Head Assembly, #1 Cylinder
2 24 096 16	Cover, Rocker, #1 Side
3 24 755 20	Kit, Breather (Includes 4)
4 25 313 02	Grommet, Rubber
5 24 096 15	Cover, Breather
6 X-75-23	Plug, Hex, Countersunk 1/8 N.P.T.F.
7 SM-0645020	Screw M6 x 1.0 x 20 (4)
8 24 326 05	Hose, Breather
9 12 755 03	Kit, Retainer (4)
10 12 173 01	Cap, Valve Spring (4)
11 24 089 02	Spring, Valve (4)
12 52 018 01	Retainer, Spring (4)
13 24 016 01	Valve, Exhaust (2)
14 24 017 01	Valve, Intake (2)
15 24 032 05	Seal, Valve Stem (2)
16 24 294 02	Fitting
17 24 326 04	Hose, Breather
18 12 351 01	Lifter, Valve (4)
19 24 411 04	Rod, Push (4)
20 24 041 08	Gasket, Cylinder Head (2)
21 24 318 12	Head Assembly, #2 Cylinder
22 24 186 02	Arm, Rocker (4)
23 24 194 01	Ball, Pivot-Rocker (4)
24 M-0640034	Screw M6 x 1.0 x 34 (4)
25 24 096 12	Cover, Rocker, #2 Side
26 12 086 16	Screw M10 x 1.5 x 91 (8)
27 M-0651030	Screw M6 x 1.0 x 30 (8)
28 24 445 01	Strap, Lifting

CRANKCASE

KEY PART NO. NO.	DESCRIPTION
1 - - -	Cylinder Block (Use Miniblock)
2 25 155 02	Connector, 90°
3 24 067 01	Connecting Rod (Standard) (2)
24 067 02	Connecting Rod (.25) (2)
4 12 380 03	Pin, Dowel Locating (6)
5 52 139 09	Plug, Cup
6 24 874 01	Piston with Ring Set (Standard) (2)
24 874 02	Piston with Ring Set (.25) (2)
24 874 03	Piston with Ring Set (.50) (2)
7 24 108 01	Ring Set (Standard) (2)
24 108 02	Ring Set (.25) (2)
24 108 03	Ring Set (.50) (2)
8 24 018 01	Retainer, Piston Pin (4)
9 12 422 09	Shim, Camshaft (As Required)
12 422 13	Shim, Camshaft (As Required)
12 422 07	Shim, Camshaft (As Required)
12 422 08	Shim, Camshaft (As Required)
12 422 10	Shim, Camshaft
12 422 11	Shim, Camshaft (As Required)
12 422 12	Shim, Camshaft (As Required)
10 24 010 03	Camshaft
11 24 144 01	Shaft, Governor Cross
12 X-25-63	Washer, Plain 1/4
13 12 032 01	Seal, Governor Cross Shaft
14 X-25-102	Washer, Plain 1/4
15 12 380 04	Pin, Hitch
16 M-0545010	Screw, Reed Retainer M5 x 0.8 x 10 (2)
17 24 018 04	Retainer, Reed (2)
18 24 402 01	Reed, Breather (2)
19 24 032 01	Seal, Oil
20 12 153 01	O-Ring, Lower Oil Fill Tube
21 12 123 04	Tube, Oil Fill
22 24 126 19	Bracket, Oil Fill Tube
23 M-0549016	Screw, Oil Fill Tube Bracket M5 x 0.8 x 16
24 12 153 02	O-Ring, upper Oil Fill Tube
25 24 038 04	Dipstick Assembly (Includes 26-27)
26 25 755 13	Kit, Oil Fill Cap (Includes 27)
27 12 153 03	O-Ring, Dipstick

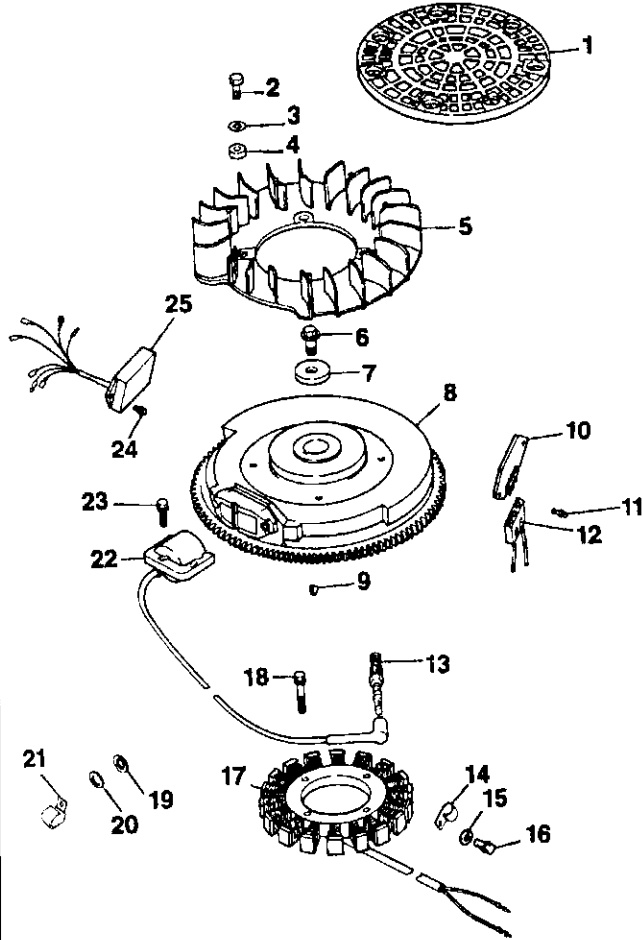
NOTE: All component dimensions given in U.S. inches
1 inch = 25.4 mm

REPAIR PARTS

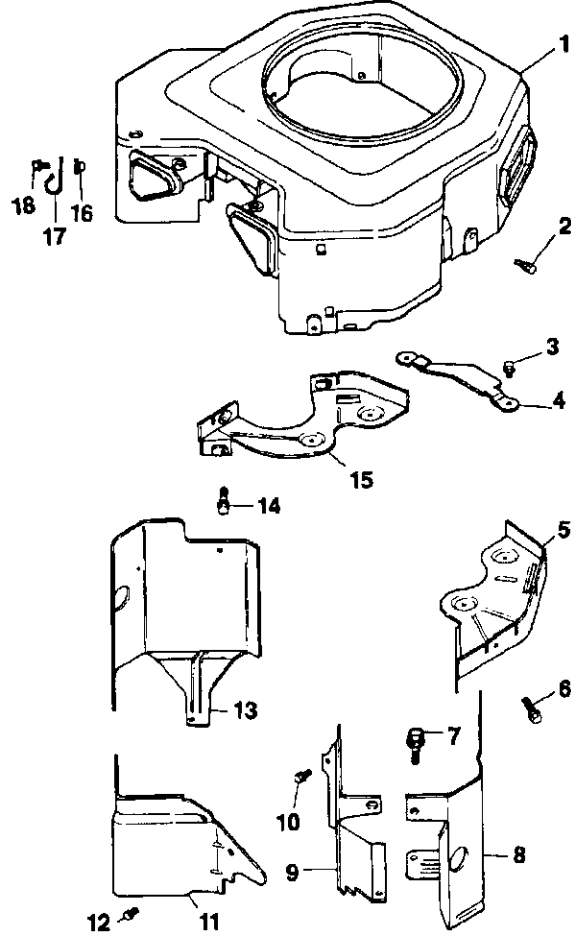
22 HP 50" TRACTOR - MODEL NUMBER 917.257740

KOHLER ENGINE - MODEL NUMBER CV22 - PS67515

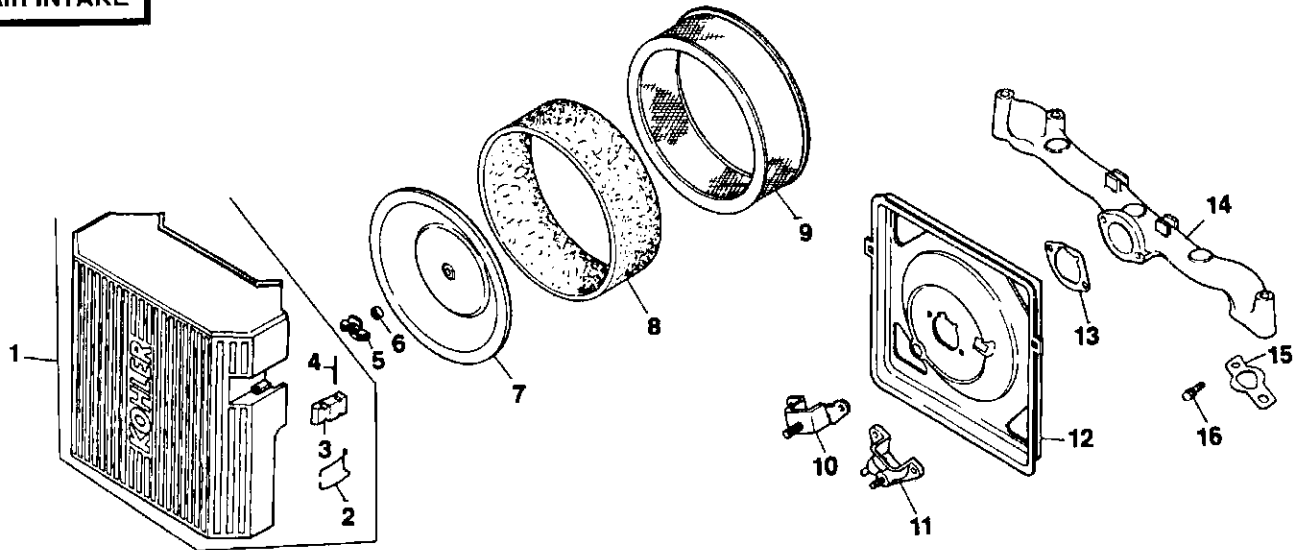
IGNITION / ELECTRICAL



BLOWER HOUSING AND BAFFLES



AIR INTAKE



REPAIR PARTS

22 HP 50" TRACTOR - MODEL NUMBER 917.257740

KOHLER ENGINE - MODEL NUMBER CV22 - PS67515

IGNITION/ELECTRICAL

KEY PART NO. NO.	DESCRIPTION
1 24 162 17	Screen, Grass
2 M-0401025	Screw, Grass Screen M4 x 0.7 x 24 (4)
3 X-25-92	Washer, Plain 1/2 (4)
4 24 112 04	Spacer, Fan (4)
5 24 157 03	Fan
6 M-0639016	Screw M6 x 1.0 x 16 (4)
7 12 112 01	Spacer, Fan (4)
8 24 025 05	Flywheel Assembly
9 X-42-15	Key
10 25 403 03	Rectifier-Regulator
11 24 086 06	Screw, Phillips (2)
12 236602	Connector, Rectifier-Regulator, 3 Contact
13 12 132 02	Spark Plug (2)
14 48 154 02	Clip, Cable
15 12 468 03	Washer, Stator Harness Clip
16 12 086 14	Screw, Stator Harness Clip M10 x 1.5 x 46
17 24 085 01	Stator, 15 Amp
18 M-0548025	Screw, Stator Mounting M5 x 0.8 x 25 (2)
19 X-25-63	Washer, Plain 1/4 (2)
20 X-25-92	Washer, Plain 1/2 (2)
21 47 154 01	Clip, Cable
22 24 584 03	Module, Ignition (2)
23 M-0560020	Screw, Module M5 x 0.8 x 20 (4)
24 M-0448010	Screw, Module M4 x 0.7 x 10 (2)
25 24 584 05	Module, Speed Advance
NOT ILLUSTRATED	
-- 24 176 27	Harness, Wire
-- 24 518 04	Lead, Green (3", 18 Gauge, Insulated Grip Barrel Eyelets)
-- 24 113 18	Decal, Grass Screen

BLOWER HOUSING & BAFFLES

KEY PART NO. NO.	DESCRIPTION
1 24 027 20	Housing, Blower
2 M-0549016	Screw M5 x 0.8 x 16 (3)
3 SM-0645016	Screw M6 x 1.0 x 16 (4)
4 24 314 05	Guard, Flywheel
5 24 146 02	Plate, Backing, # 2 Side
6 M-0545020	Screw M5 x 0.8 x 20 (2)
7 M-0551016	Screw M5 x 0.8 x 14
8 24 063 20	Baffle, Cylinder Barrel, # 2 Side
9 24 063 23	Baffle, Valley, # 1 Side
10 M-0549010	Screw M5 x 0.8 x 10 (2)
11 24 063 14	Baffle, Valley, # 2 Side
12 M-0549016	Screw M5 x 0.8 x 16 (2)
13 24 063 19	Baffle, Cylinder Barrel, # 1 Side
14 M-0649016	Screw M6 x 1.0 x 16 (2)
15 24 146 08	Plate, Backing, # 1 Side
16 24 100 01	Nut, Plastic
17 47 154 01	Clip, Cable
18 24 086 12	Screw, Cable Clip
NOT ILLUSTRATED	
-- 24 100 01	Nut, Plastic (3) (Included with Blower Housing)
-- 24 100 02	Nut, Plastic (2) (Included with Blower Housing)
-- 25 139 16	Plug, Button 9/16 (Included with Blower Housing)
-- 24 113 23	Decal, Horsepower

AIR INTAKE

KEY PART NO. NO.	DESCRIPTION
1 24 743 01	Kit, Air Cleaner Cover (Includes Key Numbers 2 thru 4)
2 24 089 04	Spring, Latch (2)
3 24 344 01	Latch, Lever (2)
4 24 380 03	Pin, Latch Lever (2)
5 12 100 01	Wing Nut
6 24 032 03	Seal, Air Intake
7 24 096 01	Cover, Inner Air Cleaner
8 24 083 02	Element, Pre-Cleaner
9 47 083 03	Element, Air Cleaner
10 24 109 01	Cup, Fuel Spitback
11 24 041 13	Gasket, Fuel Spitback Cup
12 24 094 02	Base, Air Cleaner
13 24 041 14	Gasket, Air Cleaner Base
14 24 164 06	Manifold, Intake
15 24 041 01	Gasket, Intake Manifold (2)
16 M-0639055	Screw M6 x 1.0 x 18 (4)

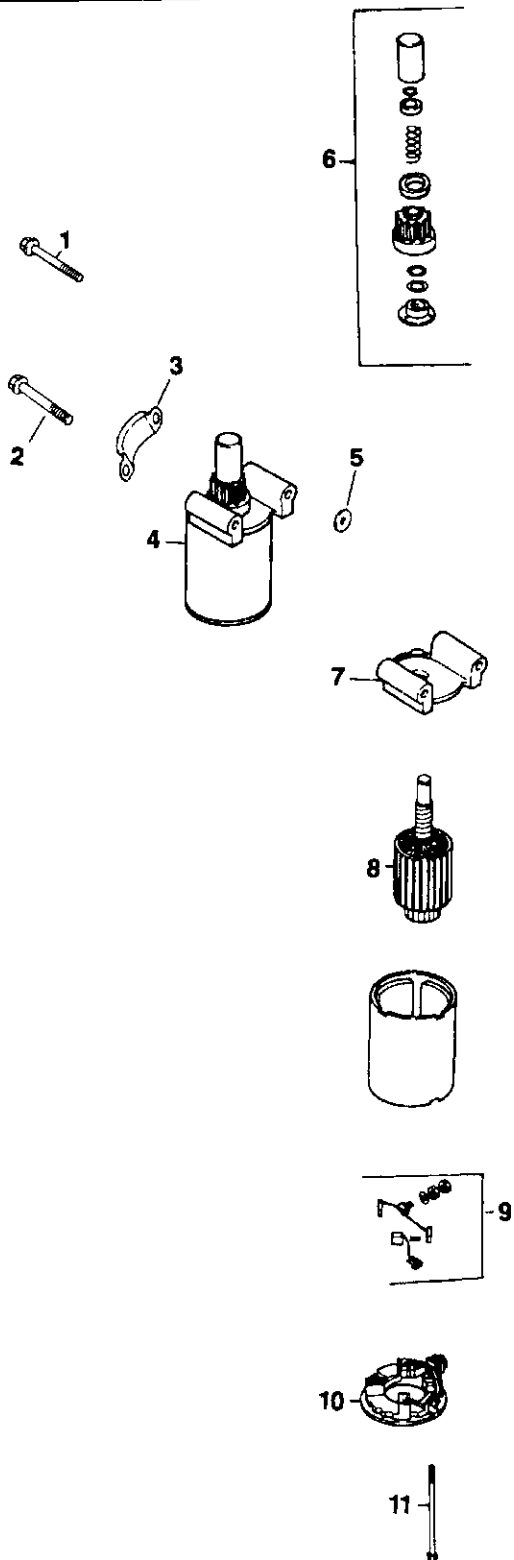
NOTE: All component dimensions given in U.S. inches
1 inch = 25.4 mm

REPAIR PARTS

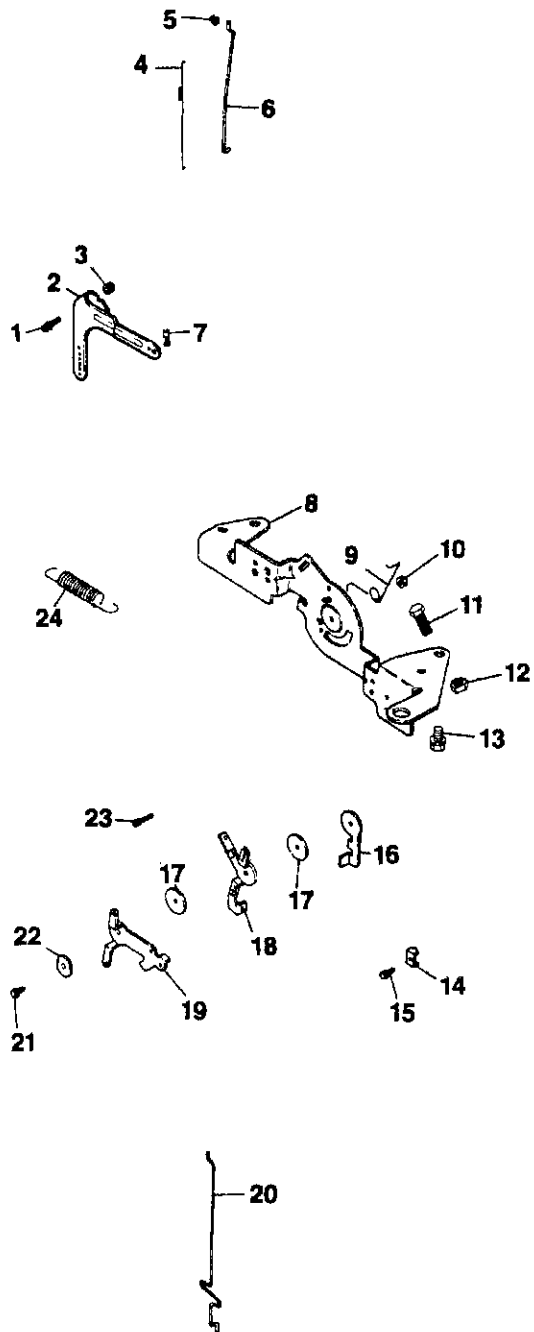
22 HP 50" TRACTOR - MODEL NUMBER 917.257740

KOHLER ENGINE - MODEL NUMBER CV22 - PS67515

STARTING SYSTEM



ENGINE CONTROLS



REPAIR PARTS

22 HP 50" TRACTOR - MODEL NUMBER 917.257740

KOHLER ENGINE - MODEL NUMBER CV22 - PS67515

STARTING SYSTEM

KEY PART NO. NO.	DESCRIPTION
1 M-0839070	Screw M8 x 1.25 x 70
2 M-0839080	Screw M8 x 1.25 x 80
3 24 096 05	Cover, Pinion
4 25 098 03	Starter Assembly (Includes 6-11)
5 12 468 01	Washer (2)
6 12 755 54	Kit, Drive End
7 12 227 06	Cap, Drive End
8 45 170 03	Armature
9 82 755 28	Kit, Brush and Spring
10 12 227 11	Cap, Commutator End
11 12 086 25	Bolt, Thru (2)

ENGINE CONTROLS

KEY PART NO. NO.	DESCRIPTION
1 SM-0642025	Screw M6 x 1.0 x 25
2 24 090 14	Lever, Governor
3 SM-0641060	Nut M6 x 1.0
4 24 089 01	Spring, Linkage
5 25 158 08	Bushing, Linkage Retaining
6 24 079 04	Linkage, Throttle
7 25 158 11	Bushing, Throttle Linkage
8 24 126 13	Bracket, Control
9 24 089 03	Spring, Choke Return
10 M-0547050	Nut M5 x 0.8
11 SM-0545016	Screw M5 x 0.8 x 16
12 M-0446030	Nut, Hex M4 x 0.7
13 SM-0645016	Screw M6 x 1.0 x 16 (4)
14 12 237 01	Clamp, Cable (2)
15 SM-0545016	Screw M5 x 0.8 x 16 (2)
16 24 090 07	Lever, Throttle Actuator
17 24 468 01	Washer (3)
18 24 090 13	Lever, Throttle Control
19 24 090 05	Lever, Choke
20 24 079 05	Linkage, Choke
21 SM-0545020	Screw M5 x 0.8 x 20
22 41 468 03	Washer, Wave
23 M-0401025	Screw M4 x 0.7 x 24
24 24 089 18	Spring, Governor

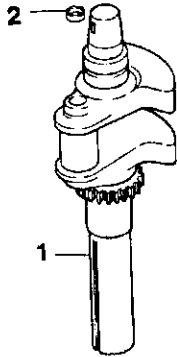
NOTE: All component dimensions given in U.S. inches
1 inch = 25.4 mm

REPAIR PARTS

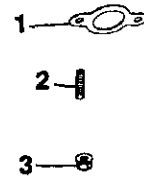
22 HP 50" TRACTOR - MODEL NUMBER 917.257740

KOHLER ENGINE - MODEL NUMBER CV22 - PS67515

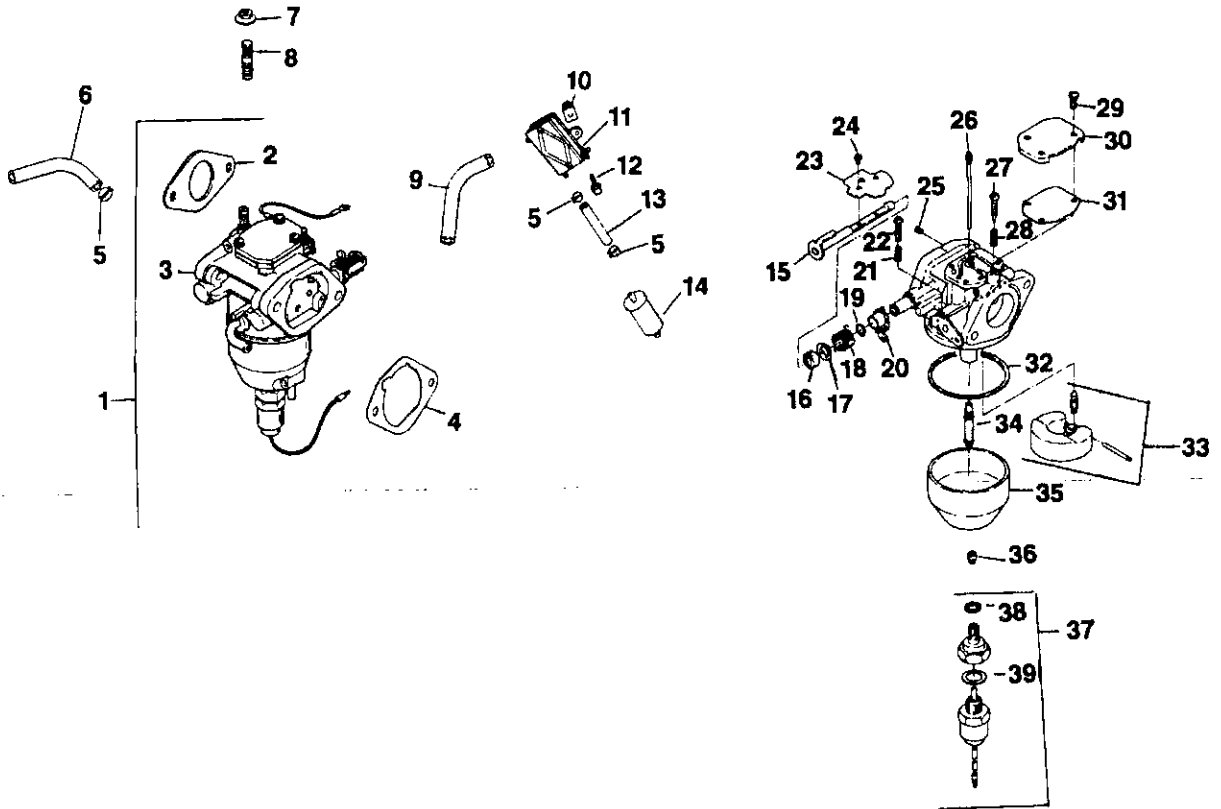
CRANKSHAFT



EXHAUST



FUEL SYSTEM



REPAIR PARTS

22 HP 50" TRACTOR - MODEL NUMBER 917.257740

KOHLER ENGINE - MODEL NUMBER CV22 - PS67515

FUEL SYSTEM

KEY PART
NO. NO.

DESCRIPTION

1	24 853 19	Kit, Carburetor with Gasket (Includes Key Numbers 2 thru 4)
2	24 041 15	Gasket, Carburetor
3	24 053 19	Carburetor Assembly (For Information Only, Not Available Separately) (Includes 15-39)
4	24 041 14	Gasket, Air Cleaner Base
5	X-426-9	Clamp, Hose (6)
6	52 353 22	Line, Fuel, 12"
7	SM-0641060	Nut M6 x 1.0 (2)
8	M-0629095	Stud M6 x 1.0 x 95 (2)
9	25 353 03	Line, Fuel, 13-1/2"
10	24 100 01	Nut, Plastic (2)
11	24 393 04	Pump, Fuel, Pulse
12	24 086 12	Screw, Hex Cap Head (2)
13	24 353 03	Line, Fuel, 10-1/2"
14	25 050 02	Filter, Fuel
15	24 144 15	Shaft, Choke
16	24 468 05	Washer
17	24 241 01	Collar, Choke
18	24 089 22	Spring, Choke Return
19	24 141 04	Ring, Choke Lever
20	24 090 10	Lever, Choke
21	24 089 24	Spring, Throttle Adjust Screw
22	24 086 19	Screw, Throttle Adjust
23	24 462 02	Valve, Choke
24	24 086 20	Screw, Throttle and Choke Shaft (4)
25	24 337 27	Jet, Air Bleed
26	24 337 11	Jet, Slow
27	24 086 22	Screw, Idle Adjust
28	24 089 23	Spring, Idle Adjust Screw
29	24 086 21	Screw (3)
30	24 096 13	Cover, Passage
31	24 041 18	Gasket, Passage Cover
32	24 041 19	Gasket, Float Chamber
33	24 757 05	Kit, Float Repair
34	24 369 01	Nozzle, Main
35	24 234 01	Chamber, Float
36	24 337 20	Jet, Main
37	24 755 15	Kit, Solenoid Valve (Includes 38-39)
38	24 041 21	Gasket, Chamber Screw
39	24 041 20	Gasket, Solenoid

NOT ILLUSTRATED

--	24 041 15	Gasket, Carburetor
--	24 063 22	Baffle, Carburetor
--	24 757 06	Kit, Carburetor Repair
--	24 755 25	Kit, High Altitude (1500-3000 Meters)
--	24 755 26	Kit, High Altitude (Over 3000 Meters)

CRANKSHAFT

KEY PART
NO. NO.

DESCRIPTION

1	24 014 72	Crankshaft
2	52 139 09	Plug, Cup

EXHAUST

KEY PART
NO. NO.

DESCRIPTION

1	24 041 02	Gasket, Exhaust (2)
2	M-0829033	Stud, Exhaust Manifold M8 x 1.25 x 20 (4)
3	M-0841080	Nut, Muffler Mounting M8 x 1.25 (4)

NOT ILLUSTRATED

KEY PART
NO. NO.

DESCRIPTION

--	24 755 03	Gasket Set
----	-----------	------------

RPM Settings: Low Speed: 1150-1650
High Speed: 3200-3400

NOTE: All component dimensions given in U.S. inches
1 inch = 25.4 mm

SERVICE NOTES
