

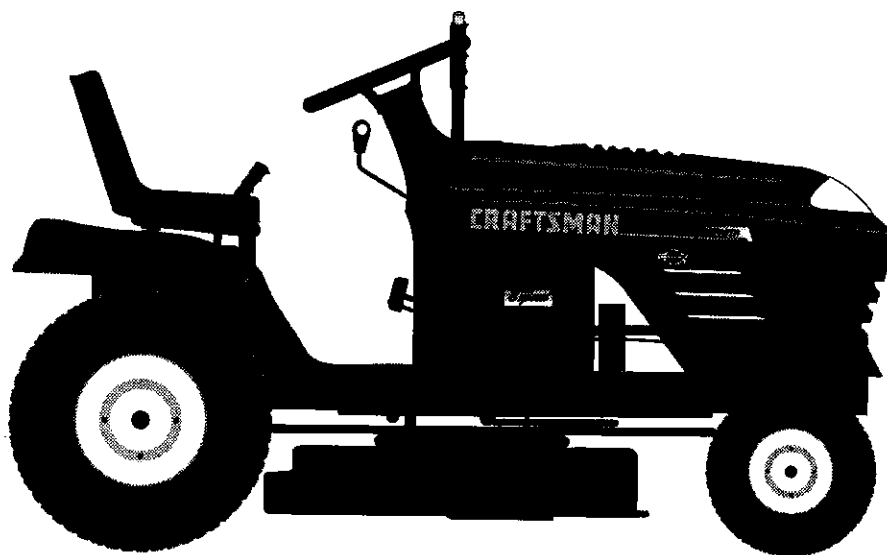
SEARS

CRAFTSMAN[®]

MODEL NUMBER 917.258560 OWNER'S MANUAL

EZ³

- **Assembly**
- **Operation**
- **Customer Responsibilities**
- **Service and Adjustments**
- **Repair Parts**



CAUTION: Read and follow all safety rules and instructions before operating this equipment.
FOR CONSUMER ASSISTANCE HOT LINE, CALL THIS TOLL FREE NUMBER: 1-800-659-5917

Sears, Roebuck and Co., Hoffman Estates, IL 60179 U.S.A.



SAFETY RULES



Safe Operation Practices for Ride-On Mowers

IMPORTANT: THIS CUTTING MACHINE IS CAPABLE OF AMPUTATING HANDS AND FEET AND THROWING OBJECTS. FAILURE TO OBSERVE THE FOLLOWING SAFETY INSTRUCTIONS COULD RESULT IN SERIOUS INJURY OR DEATH.

I. GENERAL OPERATION

- Read, understand, and follow all instructions in the manual and on the machine before starting.
- Only allow responsible adults, who are familiar with the instructions, to operate the machine.
- Clear the area of objects such as rocks, toys, wire, etc., which could be picked up and thrown by the blade.
- Be sure the area is clear of other people before mowing. Stop machine if anyone enters the area.
- Never carry passengers.
- Do not mow in reverse unless absolutely necessary. Always look down and behind before and while backing.
- Be aware of the mower discharge direction and do not point it at anyone. Do not operate the mower without either the entire grass catcher or the guard in place.
- Slow down before turning.
- Never leave a running machine unattended. Always turn off blades, set parking brake, stop engine, and remove keys before dismounting.
- Turn off blades when not mowing.
- Stop engine before removing grass catcher or unclogging chute.
- Mow only in daylight or good artificial light.
- Do not operate the machine while under the influence of alcohol or drugs.
- Watch for traffic when operating near or crossing roadways.
- Use extra care when loading or unloading the machine into a trailer or truck.

II. SLOPE OPERATION

Slopes are a major factor related to loss-of-control and tipover accidents, which can result in severe injury or death. All slopes require extra caution. If you cannot back up the slope or if you feel uneasy on it, do not mow it.

DO:

- Mow up and down slopes, not across.
- Remove obstacles such as rocks, tree limbs, etc.
- Watch for holes, ruts, or bumps. Uneven terrain could overturn the machine. *Tall grass can hide obstacles.*
- Use slow speed. Choose a low gear so that you will not have to stop or shift while on the slope.
- Follow the manufacturer's recommendations for wheel weights or counterweights to improve stability.
- Use extra care with grass catchers or other attachments. These can change the stability of the machine.
- Keep all movement on the slopes *slow* and *gradual*. Do not make sudden changes in speed or direction.
- Avoid starting or stopping on a slope. If tires lose traction, disengage the blades and proceed slowly *straight* down the slope.

DO NOT:

- *Do not* turn on slopes unless necessary, and then, turn slowly and gradually downhill, if possible.
- *Do not* mow near drop-offs, ditches, or embankments. The mower could suddenly turn over if a wheel is over the edge of a cliff or ditch, or if an edge caves in.
- *Do not* mow on wet grass. Reduced traction could cause sliding.
- *Do not* try to stabilize the machine by putting your foot on the ground.
- *Do not* use grass catcher on steep slopes.

III. CHILDREN

Tragic accidents can occur if the operator is not alert to the presence of children. Children are often attracted to the machine and the mowing activity. *Never* assume that children will remain where you last saw them.

- Keep children out of the mowing area and under the watchful care of another responsible adult.
- Be alert and turn machine off if children enter the area.
- Before and when backing, look behind and *down* for small children.
- Never carry children. They may fall off and be seriously injured or interfere with safe machine operation.
- Never allow children to operate the machine.
- Use extra care when approaching blind corners, shrubs, trees, or other objects that may obscure vision.

IV. SERVICE

- Use extra care in handling gasoline and other fuels. They are flammable and vapors are explosive.
 - Use only an approved container.
 - Never remove gas cap or add fuel with the engine running. Allow engine to cool before refueling. Do not smoke.
 - Never refuel the machine indoors.
 - Never store the machine or fuel container inside where there is an open flame, such as a water heater.
- Never run a machine inside a closed area.
- Keep nuts and bolts, especially blade attachment bolts, tight and keep equipment in good condition.
- Never tamper with safety devices. Check their proper operation regularly.
- Keep machine free of grass, leaves, or other debris build-up. Clean oil or fuel spillage. Allow machine to cool before storing.
- Stop and inspect the equipment if you strike an object. Repair, if necessary, before restarting.
- Never make adjustments or repairs with the engine running.
- Grass catcher components are subject to wear, damage, and deterioration, which could expose moving parts or allow objects to be thrown. Frequently check components and replace with manufacturer's recommended parts, when necessary.
- Mower blades are sharp and can cut. Wrap the blade(s) or wear gloves, and use extra caution when servicing them.
- Check brake operation frequently. Adjust and service as required.



Look for this symbol to point out important safety precautions. It means CAUTION!!! BECOME ALERT!!! YOUR SAFETY IS INVOLVED.



CAUTION: Always disconnect spark plug wire and place wire where it cannot contact spark plug in order to prevent accidental starting when setting up, transporting, adjusting or making repairs.

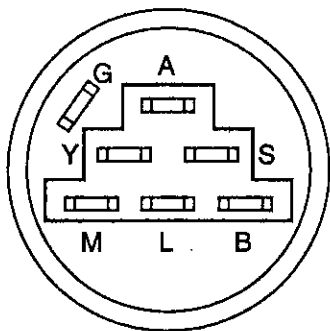
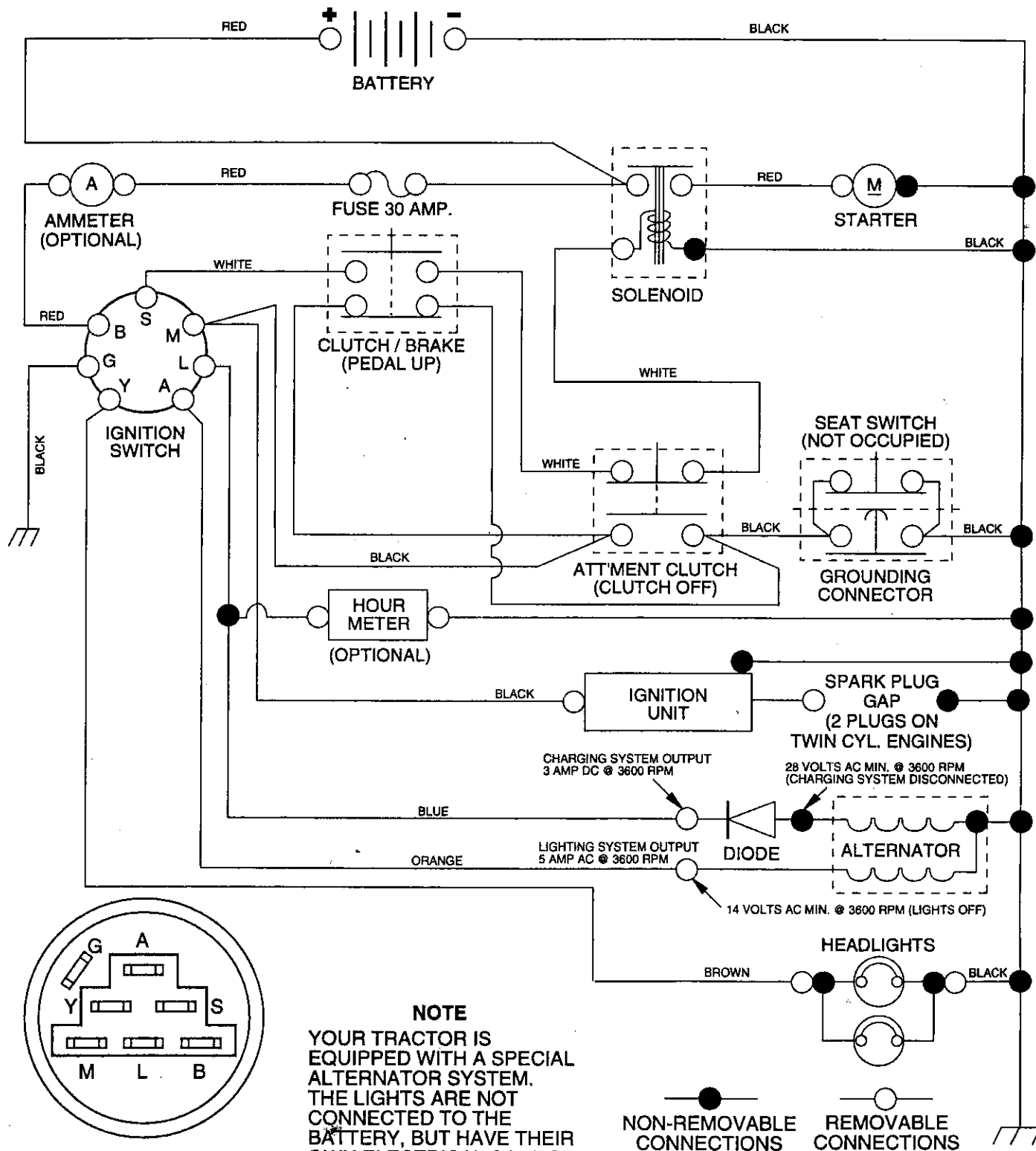


WARNING

The engine exhaust from this product contains chemicals known to the State of California to cause cancer, birth defects, or other reproductive harm.

TRACTOR - - MODEL NUMBER 917.258560

SCHEMATIC



IGNITION SWITCH

POSITION	CIRCUIT	"MAKE"
OFF	G + M + L	NONE
RUN/LIGHT	B + L	A + Y
RUN	B + L	NONE
START	B + L + S	NONE

NOTE

YOUR TRACTOR IS EQUIPPED WITH A SPECIAL ALTERNATOR SYSTEM. THE LIGHTS ARE NOT CONNECTED TO THE BATTERY, BUT HAVE THEIR OWN ELECTRICAL SOURCE. BECAUSE OF THIS, THE BRIGHTNESS OF THE LIGHTS WILL CHANGE WITH ENGINE SPEED. AT IDLE THE LIGHTS WILL DIM. AS THE ENGINE IS SPEEDED UP, THE LIGHTS WILL BECOME THEIR BRIGHTEST.

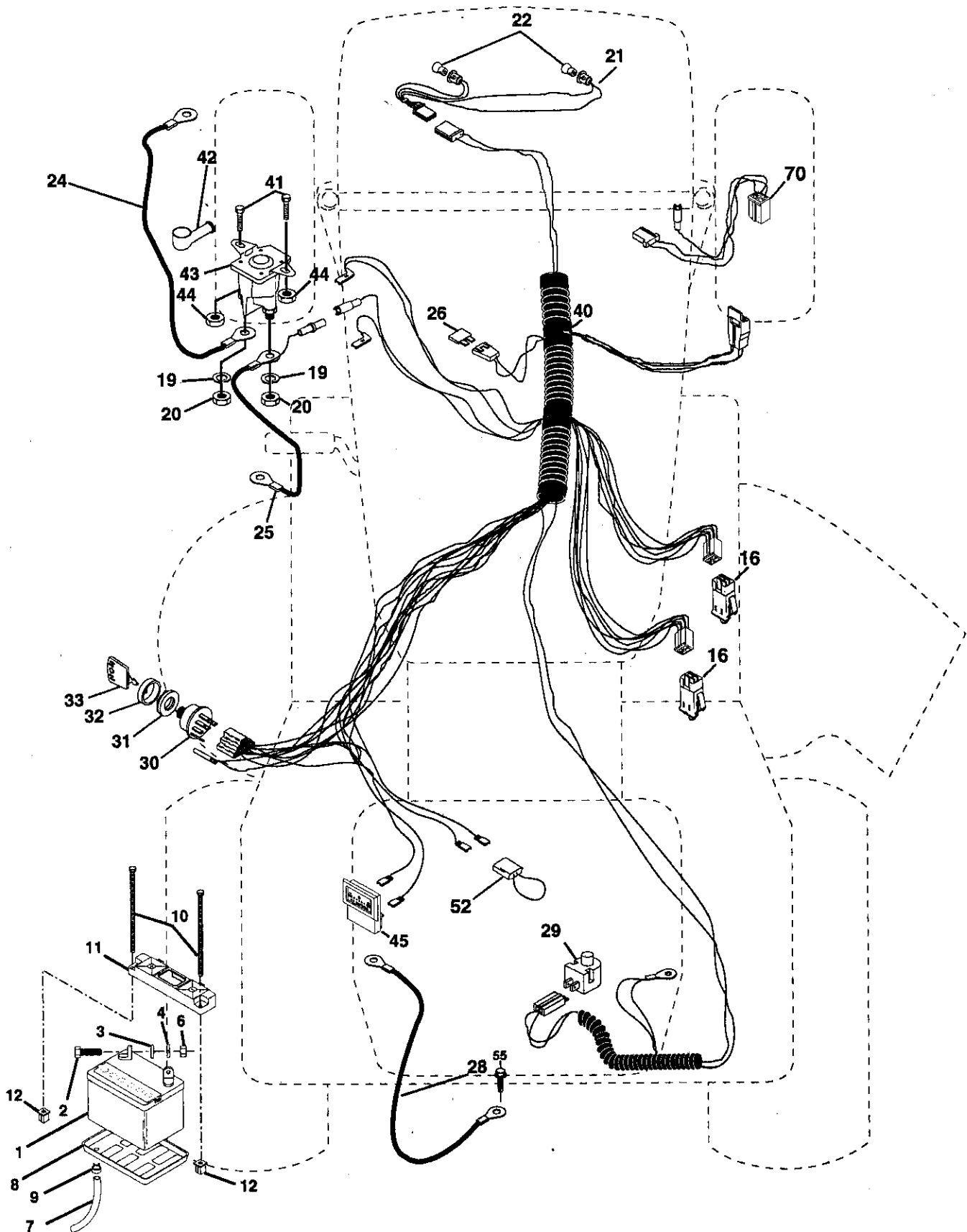
WIRING INSULATED CLIPS

NOTE: IF WIRING INSULATED CLIPS WERE REMOVED FOR SERVICING OF UNIT, THEY SHOULD BE REPLACED TO PROPERLY SECURE YOUR WIRING.

REPAIR PARTS

TRACTOR -- MODEL NUMBER 917.258560

ELECTRICAL



REPAIR PARTS

TRACTOR - - MODEL NUMBER 917.258560

ELECTRICAL

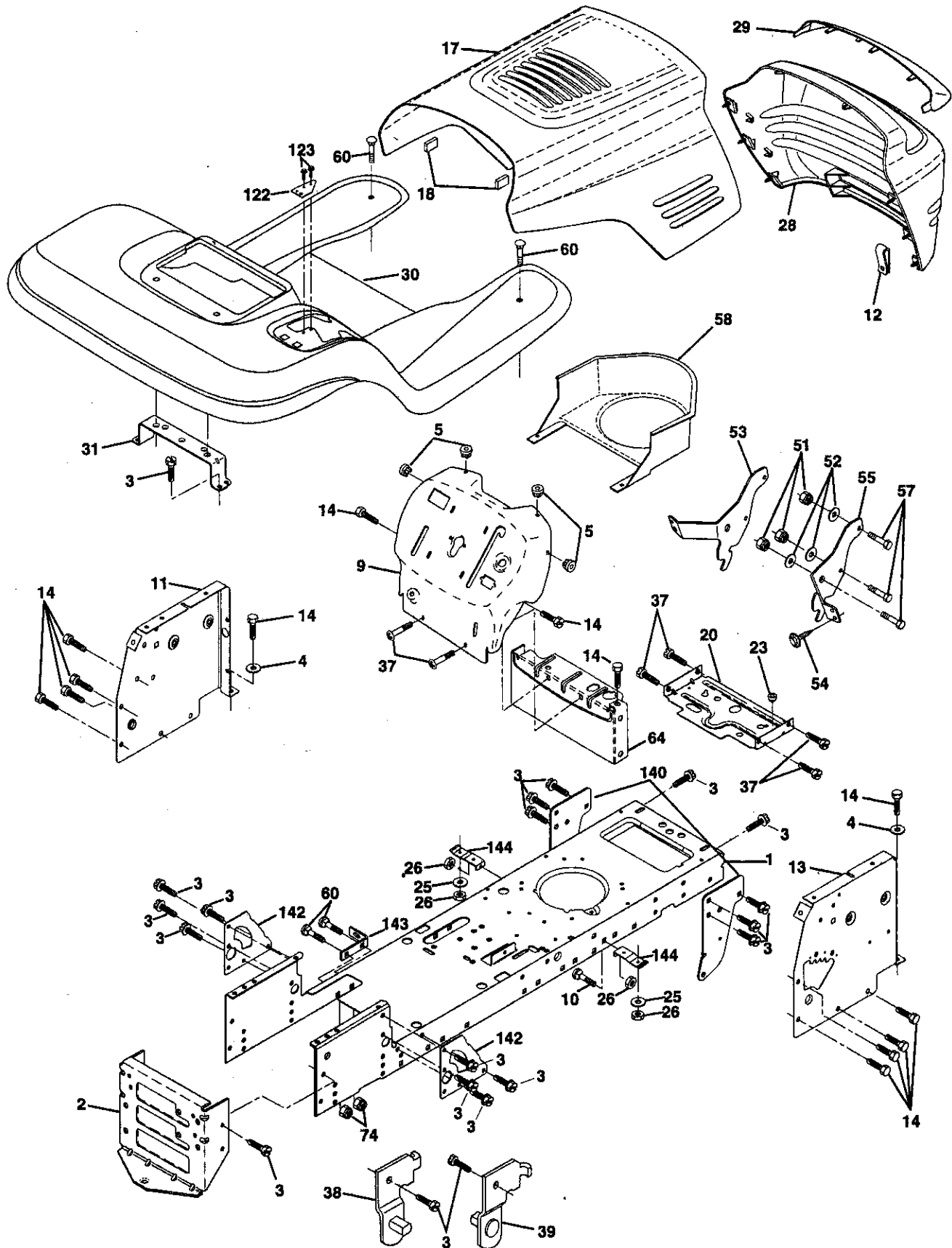
KEY NO.	PART NO.	DESCRIPTION
1	146140	Battery
2	74760412	Bolt, Hex 1/4-20 x 3/4
3	STD551025	Washer 9/32 x 5/8 x 16 Gauge
4	STD551125	Washer, Lock 1/4
6	STD541025	Nut, Hex 1/4-20
7	7697J	Tube
8	7603J	Tray, Battery
9	109596X	Clamp, Hose
10	145211	Bolt, Btr Front 1/4-20 x 7-1/2
11	150109	Holddown Battery Front Mount
12	145769	Nut, Push Nylon Battery Front 1/4
16	153664	Switch Interlock Push-In
19	STD551125	Washer, Lock 1/4
20	73350400	Nut, Hex, Jam 1/4-20
21	147430	Harness, Light Socket (w/4152J)
22	4152J	Light Bulb
24	4799J	Cable, Battery
25	146148	Cable, Battery
26	108824X	Fuse
28	145491	Cable, Ground
29	121305X	Switch, Seat
30	140301	Switch, Ignition 4 Position
31	124211X	Nut, Ignition
32	141226	Cover, Ignition Switch
33	109310X	Key, Molded, Craftsman
40	156442	Harness, Ignition
41	71110408	Boit Blk Fin Hex 1/4-20 UNC x 1/2
42	131563	Cover, Terminal
43	145673	Solenoid
44	73640400	Nut Keps Blk Hex 1/4-20 UNC
45	121433X	Ammeter Rectangular 6 Amp
52	141940	Protection Wire Loop (Hour Meter)
55	17490508	Screw Thdrol 5/16-18 x 1/2
70	140413	Harness Engine B&S/Tec Dual

NOTE: All component dimensions given in U.S. inches
1 inch = 25.4 mm

REPAIR PARTS

TRACTOR -- MODEL NUMBER 917.258560

CHASSIS AND ENCLOSURES



REPAIR PARTS

TRACTOR - - MODEL NUMBER 917.258560

CHASSIS AND ENCLOSURES

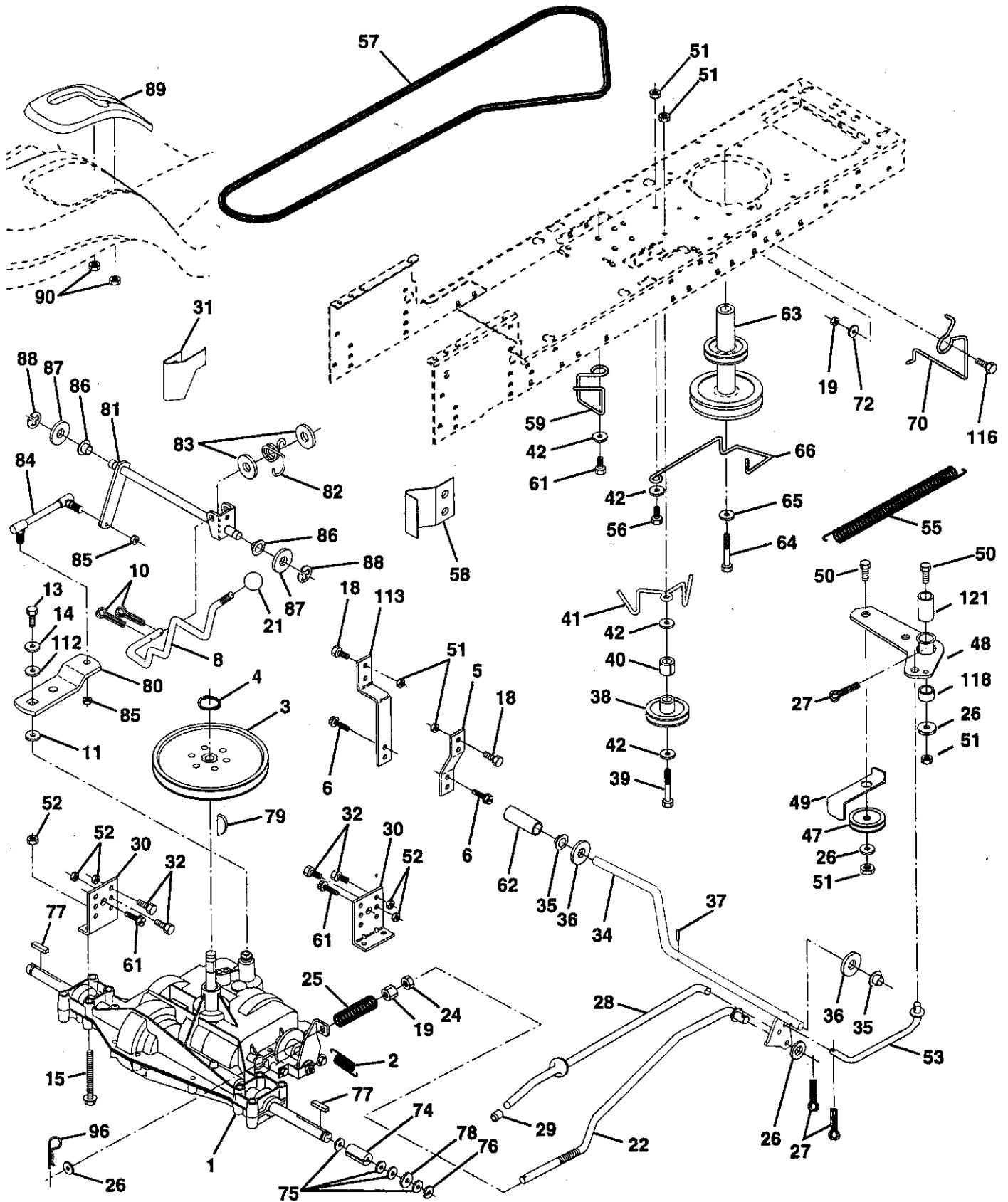
KEY NO.	PART NO.	DESCRIPTION
1	153871	Chassis
2	140356	Drawbar
3	17490612	Screw, Thd., Roll. 3/8-16 x 3/4 Type TT
4	STD551025	Washer 13/32 x 3/4 x 16 Gauge
5	155272	Bumper Hood/Dash
9	150156X011	Dash, Silkscreened
10	STD533710	Bolt, Carriage 3/8-16 x 1
11	155927	Panel, Dash, LH
12	145660	Clip Tinnerman Grille P/L
13	155936	Panel, Dash, RH
14	17490608	Screw, Thd., Roll. 3/8-16 x 1/2 Type TT
17	144983X558	Hood Assembly
18	126938X	Bumber Hood
20	156437	Plate Mtg Battery Fuel Tank
23	124028X	Bushing, Snap, Nylon, Fuel Line
25	19131312	Washer 13/32 x 13/16 x 12 Gauge
26	STD541437	Locknut, Hex, with Insert 3/8-16 UNC
28	145198X558	Grille, W/Clips MS-558
29	145200	Lens, Grille
30	151287X558	Fender/Footrest
31	139976	Bracket, Fender/Support
37	17490508	Screw, Thdrol. 5/16-18 x 1/2 TYT
38	139886	Pivot Bracket Assembly, LH, Mower, Rear
39	139887	Pivot Bracket Assembly, RH, Mower, Rear
51	73800400	Nut Lock W/Insert 1/4 - 20 UNC
52	19091416	Washer 9/32 X 7/8 X 16 Ga.
53	145201	Bracket Grille Pickoff LH
54	17030814	Screw, Hex Head, Spiderlock #8 x 7/8 AB
55	145202	Bracket Grille Pickoff RH
57	STD552507	Bolt FinHex 1/4 -20 UNC X.75
58	140547	Air Duct P/L 18HP B&S Opp. Twin
60	72140606	Bolt Rdhd Sqnk 3/8-16 UNC x 3/4
64	154798	Dash Lower STLT
74	STD541437	Nut Crownlock 3/8-16 UNC
122	157301	Bracket Shift STLT
123	152927	Screw
140	150556	Bracket Chassis Front
142	156095	Plate Reinforcement STLT
143	154966	Backrest Swaybar Chassis
144	154207	Bracket Footrest STLT
146	154334	Screw 5/16-18 UN-2A

NOTE: All component dimensions given in U.S. inches
1 inch = 25.4 mm

REPAIR PARTS

TRACTOR -- MODEL NUMBER 917.258560

DRIVE



REPAIR PARTS

TRACTOR -- MODEL NUMBER 917.258560

DRIVE

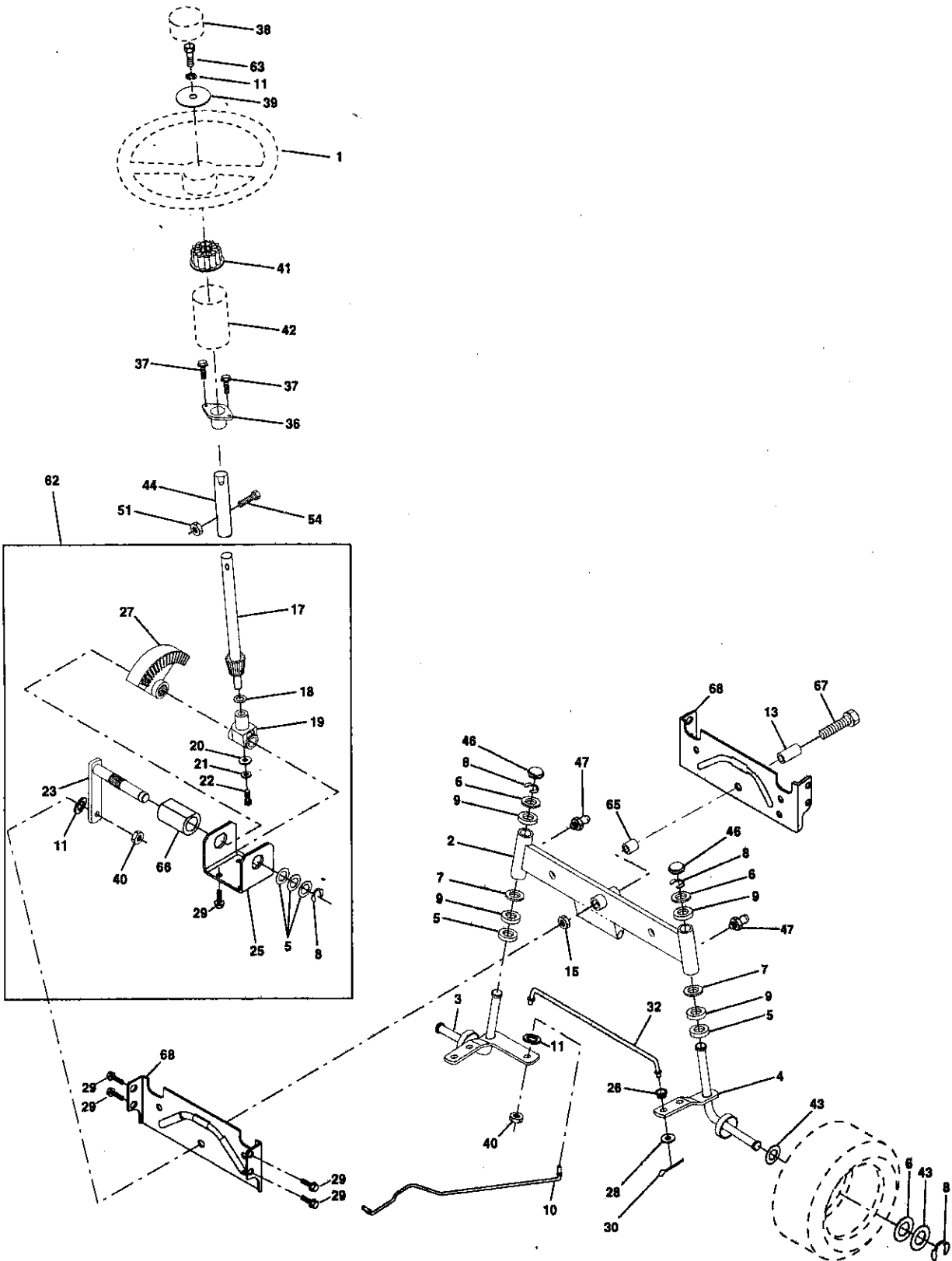
KEY NO.	PART NO.	DESCRIPTION	KEY NO.	PART NO.	DESCRIPTION
1	-----	Transaxle (See Breakdown)	53	105710X	Link, Clutch
2	146682	Peerless 930-057A	55	105709X	Spring, Clutch Return
3	123666X	Spring, Return, Brake	56	STD523712	Bolt Fin Hex 3/8-16 x 1-1/4
4	12000028	Pulley, Transaxle	57	130801	V-Belt, Ground Drive
5	121520X	Ring, Retainer	58	127274X	Keeper, Belt, R.H.
6	17490512	Strap, Torque	59	140312	Keeper, Belt, Center Span
8	154792	Screw, Thd., Roll. 5/16-18 x 3/4	61	17490612	Screw, Thd., Roll. 3/8-16 x 3/4
10	STD561210	Rod Shifter Fender STLT	62	8883R	Cover, Pedal
11	105701X	Pin, Cotter	63	140186	Pulley, Engine
13	74550412	Washer, Shift Plate	64	71170764	Bolt, Hex Head, Fin. 7/16-20 x 4 Grade 5
14	STD551125	Bolt 1/4-28 UNF W/Patch Grade 8	65	STD551143	Washer
15	74490544	Washer	66	154778	Keeper, Belt, Engine, Fool-Proof
18	STD523710	Bolt, Hex Flghd 5/16-18 Grade 5	70	134683	Guide, Mower Drive Belt, R.H.
19	STD541437	Bolt Fin Hex 3/8-16 UNC x 1. Gr 5	72	19132012	Washer 13/32 x 1-1/4 x 12 Gauge
21	106933X	Nut	74	137057	Spacer, Axle
22	130804	Knob	75	121749X	Washer 25/32 x 1-1/4 x 16 Gauge
24	STD541237	Rod, Brake	76	STD581075	E-Ring
25	106888X	Nut	77	123583X	Key, Square 2.0 x .1845/.1865
26	STD551037	Spring, Brake Rod	78	121748X	Washer 25/32 x 1-5/8 x 16 Gauge
27	STD561210	Washer	79	2228M	Key Woodruff #9 3/16 x 3/4
28	145204	Pin	80	145090	Arm, Shift
29	124236X	Rod, Parking Brake	81	156049	Shaft Assembly
30	130807	Cap, Parking Brake, Red	82	123782X	Spring, Torsion
31	127275X	Bracket, Transaxle	83	19171216	Washer 17/32 x 3/4 x 16 Gauge
32	STD523107	Keeper, Belt, L.H.	84	145643	Tie Rod
34	155071	Bolt	85	150360	Nut, Nylock
35	120183X	Shaft Assembly, Foot Pedal	86	71208	Bushing, Pivot
36	STD551062	Bearing, Nylon	87	19212016	Washer
37	STD571810	Washer	88	12000008	E-Ring
38	123674X	Roll Pin	89	154886	Console, Shift, STLT
39	STD523727	Pulley, Idler, Flat	90	124346X	Nut, Self-Threading, Washer Hd 1/4
40	4470J	Bolt	96	4497H	Retainer Spring 1" Zinc Cad
41	154777	Spacer, Split .395 x .59	112	19091210	Washer 9/32 x 3/4 x 10 Gauge
42	19131312	Keeper, Belt, Idler Fool-Proof	113	127285X	Strap Torque LT
47	127783	Washer 13/32 x 13/16 x 12 Gauge	116	72110610	Bolt Rdhd Sqneck 3/8-16 x 1.25
48	154604	Pulley, Idler, V-Groove, Plastic	118	154774	Spacer Bellcrank
49	123205X	Bellcrank Assembly	121	154419	Nyliner Clutching STL
50	STD523715	Retainer, Belt			
51	STD541437	Bolt			
52	STD541431	Nut Crown Lock 3/8-16 UNC			
		Nut Crown Lock 5/16-18 UNC			

NOTE: All component dimensions given in U.S. inches
1 inch = 25.4 mm

REPAIR PARTS

TRACTOR - - MODEL NUMBER 917.258560

STEERING ASSEMBLY



REPAIR PARTS

TRACTOR - - MODEL NUMBER 917.258560

STEERING ASSEMBLY

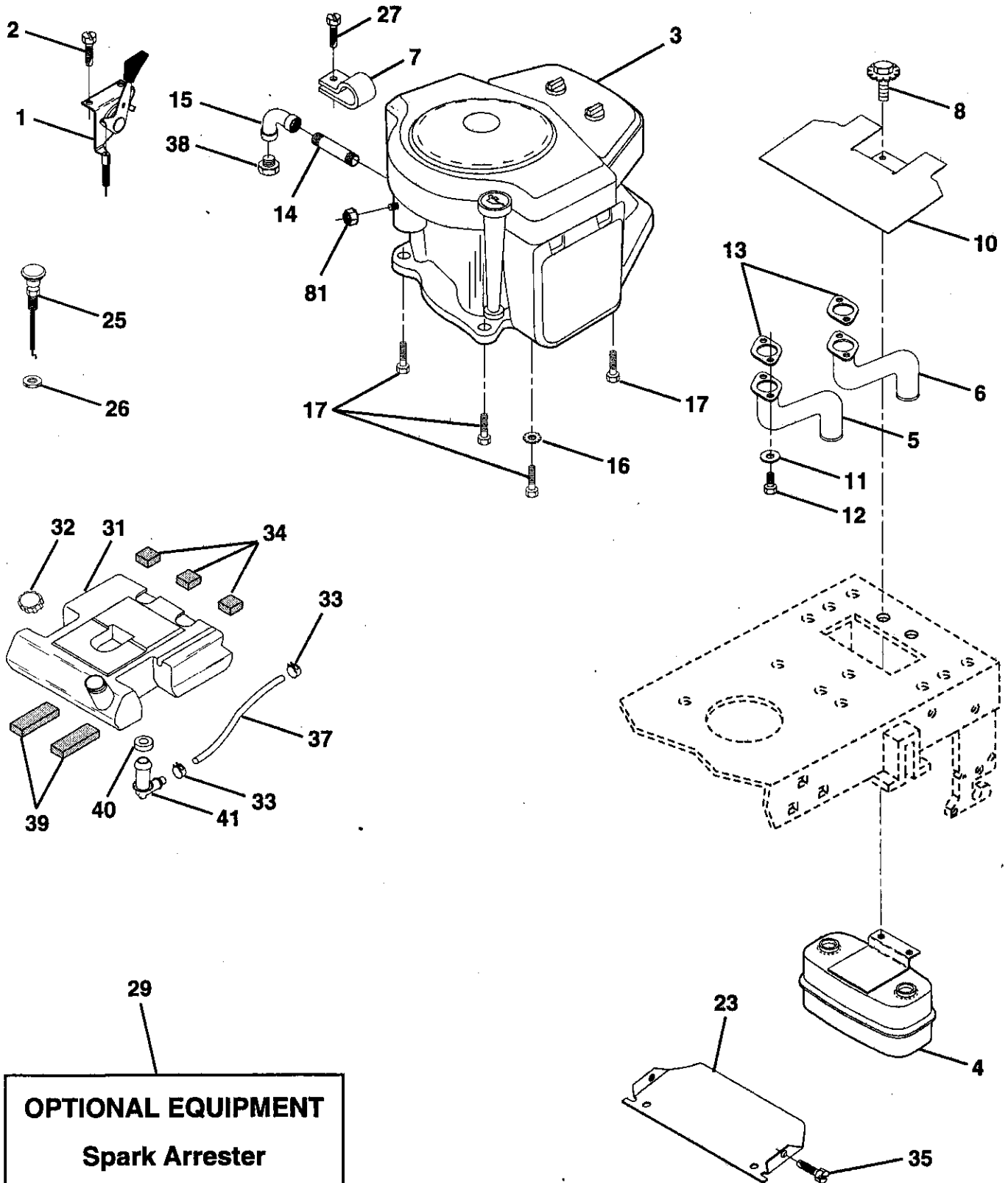
KEY NO.	PART NO.	DESCRIPTION
1	139768	Steering Wheel
2	154427	Axle Assembly STMP Dropped STL
3	154422	Spindle Assembly, L.H.
4	154423	Spindle Assembly, R.H.
5	6266H	Bearing, Race, Thrust, Hardened
6	121748X	Washer 25/32 x 1-5/8 x 16 Gauge
7	19272016	Washer 27/32 x 1-1/4 x 16 Gauge
8	12000029	Ring, Klip
9	3366R	Bearing, Steering Column
10	156438	Draglink Extended Stamped
11	STD551137	Washer, Lock
13	154779	Bearing Axle STLT/GT
15	73901000	Nut, Lock, Flange 5/8-11 UNC
17	156546	Shaft Assembly, Steering
18	57079	Washer, Thrust .515 x .750 x .033
19	124035X	Support, Shaft
20	126684X	Washer, Shim 1/4 x 5/8 x .062
21	STD551125	Washer
22	71100410	Screw, Hex Socket Head 1/4-20 x 5/8
23	127501	Pittman Shaft Assembly
25	154406	Bracket, Steering
26	126847X	Bushing, Link, Drag
27	136874	Gear, Sector
28	19131416	Washer 13/32 x 7/8 x 16 Gauge
29	17490612	Screw, Thd., Roll. 3/8-16 x 3/4
30	STD561210	Pin
32	130465	Rod, Tie
36	155099	Bushing, Steering
37	152927	Screw
38	139769	Insert, Steering Wheel
39	19133808	Washer 13/32 x 2-3/8 x 8 Gauge
40	STD541537	Gripco Nut
41	100711L	Adaptor, Steering Wheel
42	145054	Boot, Steering Shaft
43	121749X	Washer 25/32 x 1-1/4 x 16 Gauge
44	153720	Extension Shaft Steering LR.LT
46	121232X	Cap, Spindle
47	6855M	Fitting, Grease
51	STD541431	Nut Lock Hex w/Ins. 5/16-18 UNC
54	74780520	Bolt Fin Hex 5/16-18 UNC x 1-1/4
62	156594	Kit Steering Asm Service
63	STD523710	Bolt, Fin Hex 3/8-16 UNC x 1 Gr 5
65	154780	Spacer Axle
66	154404	Bearing Arm Pittman
67	74781044	Bolt, Fin Hex 5/8-11 UNC x 2-3/4
68	154429	Axle, Brace

NOTE: All component dimensions given in U.S. inches
1 inch = 25.4 mm

REPAIR PARTS

TRACTOR - - MODEL NUMBER 917.258560

ENGINE



REPAIR PARTS

TRACTOR - - MODEL NUMBER 917.258560

ENGINE

KEY NO.	PART NO.	DESCRIPTION
1	151273	Control Throt Paddle 32 22
2	17720410	Screw Hex Thd Cut 1/4-20x5/8 T
3	-----	Engine (See Breakdown) Briggs Model No. 42A707-1624-01
4	149723	Muffler Exhaust
5	144069	Exhaust Asm. Left
6	144068	Exhaust Asm. Right
7	138129	Clamp Tube Double Engine
8	150176	Bolt 5/16 - 18 UNC X 3/4 W/Sems
10	145552	Heat Shield Lt
11	STD551125	Washer Lock Hvy. Helical 1/4
12	STD522507	Bolt Fin Hex 1/4-20 x 3/4
13	272250	Gasket Muffler
14	13280336	Nipple Pipe 4-1/2"
15	13200300	Elbow Std 90 Degree 3/8-18 Npt
16	STD551237	Washer Lock Ext Tooth 3/8
17	17490624	Screw Thdrol 3/8-16x1-1/2 Tytt
23	156123	Shield Browning
25	145996	Control Choke
26	73920600	Nut Keps 3/8-24 Unf
27	152927	Screw TT #10-32 x 5 x 3/8 Flange
29	137180	Arrestor Spark
31	153630	Tank Fuel 3 50 Rear
32	155971	Cap Fuel Guage STLT
33	123487X	Clamp Hose Blk
34	106082X	Spacer Pad
35	17490512	Screw Thdrol 5/16-18 x 3/4 TYT
37	8543R	Line Fuel
38	-----	Plug Oil Drain (Order From Engine Manufacturer)
39	109227X	Pad Idler 1.75 x .75 x .06
40	3645J	Bushing
41	139277	Stem Tank Fuel
81	128861	Nut, Flange 1/4-20 Starter Nut

NOTE: All component dimensions given in U.S. inches
1 inch = 25.4 mm

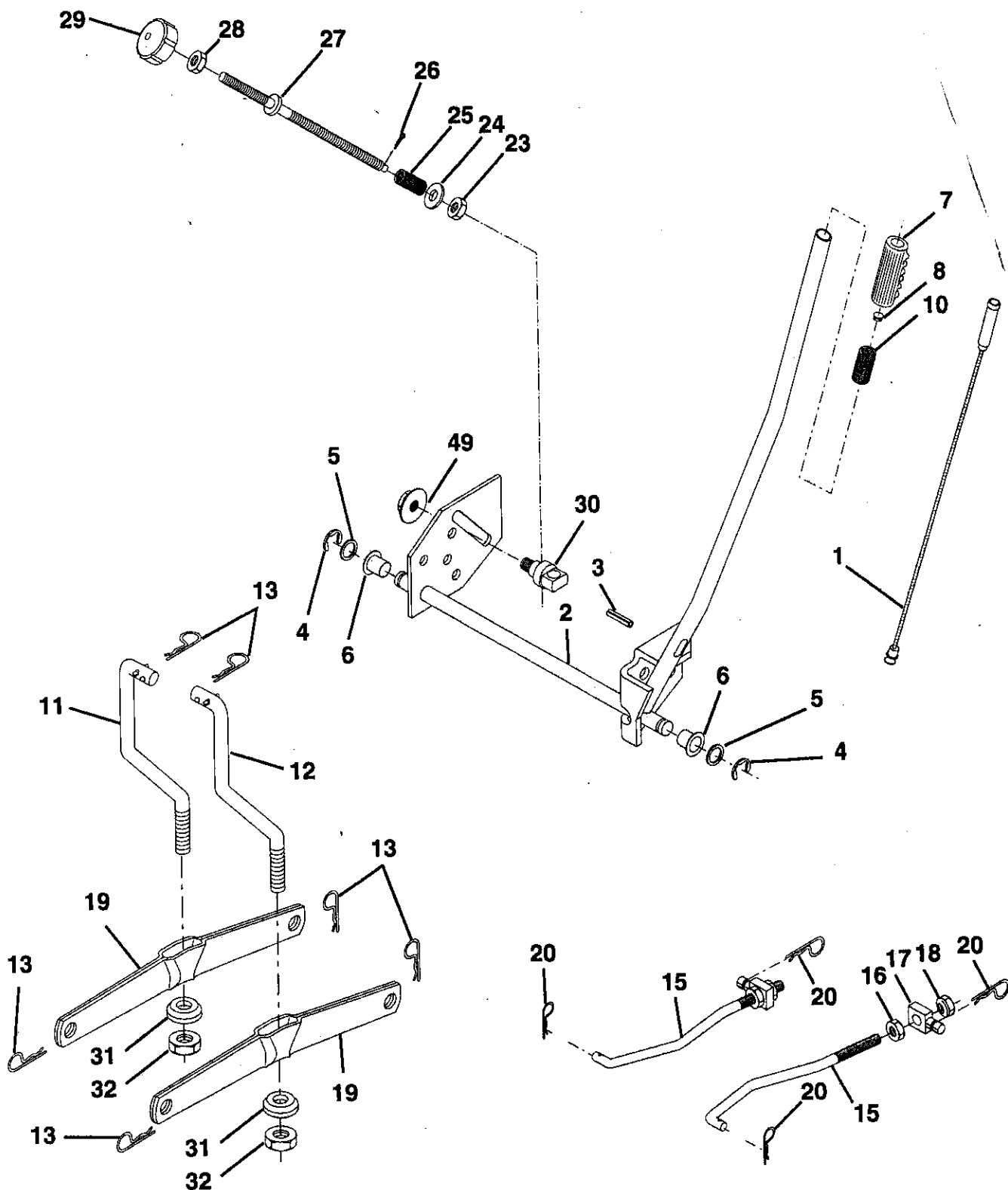
REPAIR PARTS

TRACTOR - - MODEL NUMBER 917.258560

MOWER LIFT

RE

EN



REPAIR PARTS

TRACTOR - - MODEL NUMBER 917.258560

MOWER LIFT

KEY NO.	PART NO.	DESCRIPTION
1	136973	Wire Assy., Inner, with Plunger
2	145117	Shaft Asm. Lift
3	105767X	Pin Groove
4	12000002	E Ring #5133-62
5	19211621	Washer 21/32 x 1 x 21 Ga.
6	120183X	Bearing Nylon
7	125631X	Grip Handle Fluted
8	122365X	Button Plunger Read
10	122512X	Spring Cprsn
11	139865	Link Lift Lh Fixed Length
12	139866	Link Lift Rh Fixed Length
13	STD624008	Retainer Spring
15	127218	Link Front
16	73350800	Nut Jam Hex 1/2-13 Unc
17	130171	Trunnion Bk Zinc
18	73800800	Nut Lock W/Wsh 1/2-13 Unc
19	139868	Arm Suspension Rear
20	STD624008	Retainer Spring
23	110807X	Nut Spring
24	19131016	Washer 13/32 x 5/8 x 16 Ga.
25	2876H	Spring 2-1/8"
26	76020308	Pin cotter 3/32 x 1/2
27	126971X	Rod Adj. Lift
28	73350600	Nut Hex Jam 3/8-16
29	138057	Knob Inf. 3/8-16
30	150233	Trunnion Infin. Height
31	140302	Bearing, Pivot, Lift, Special
32	73540600	Nut, Crownlock 3/8-24
49	145212	Nut Flange Lock

NOTE: All component dimensions given in U.S. inches
1 inch = 25.4 mm

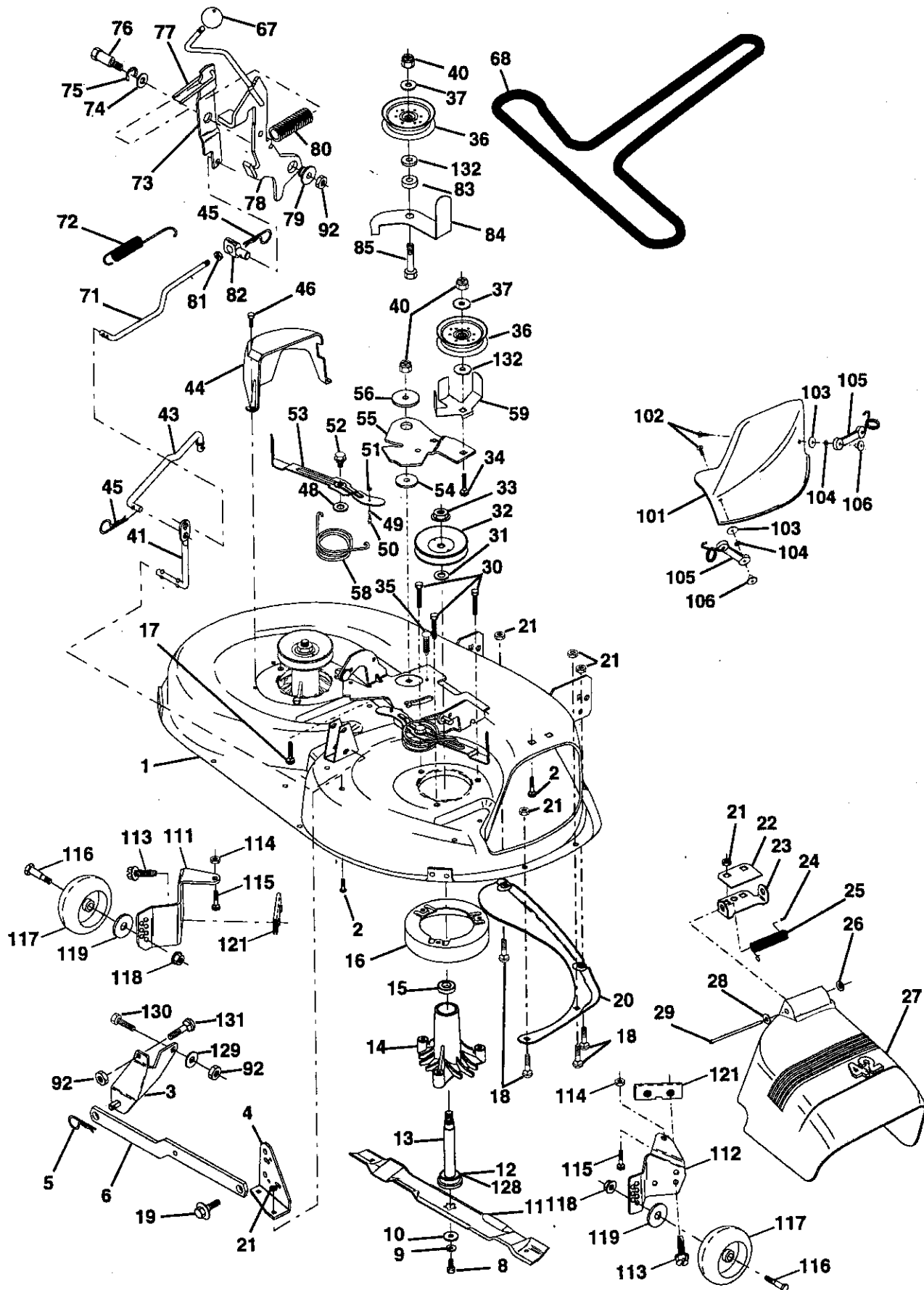
REPAIR PARTS

TRACTOR -- MODEL NUMBER 917.258560

MOWER DECK

REI

MO'



REPAIR PARTS

TRACTOR - - MODEL NUMBER 917.258560

MOWER DECK

KEY NO.	PART NO.	DESCRIPTION	KEY NO.	PART NO.	DESCRIPTION
1	144393	Mower Deck Assembly, 42"	58	140086	Spring, Torsion, Brake
2	STD533107	Bolt	59	141043	Guard, Idler
3	138017	Bracket Asm Fr. Sway Bar	67	149846	Knob Custom Dual
4	138440	Bracket Asm Deck 42" Sway Bar	68	144200	V-Belt, 42" Mower
5	STD624008	Retainer Spring	71	142427	Rod, Clutch, Primary
6	130832	Arm, Suspension, Rear	72	131870	Spring, Extension, Return
8	850857	Bolt 3/8-24 x 1.25 Grade 8	73	127847	Arm, Clutch, Secondary
9	STD551137	Washer, Lock	74	121748X	Washer 25/32 x 1-5/8 x 16 Gauge
10	140296	Washer, Hardened	75	12000029	Ring, Klip
11	134149	Blade, Mulching, 42" Mower Deck	76	128903	Bolt, Shoulder 3/8-16 UNC x 1.44
12	129895	Bearing, Ball	77	127845	Keeper, Spring
13	137645	Shaft Assembly, Mandrel, Vented (Includes Key Number 12)	78	154809	Arm, Clutch, Primary
14	128774	Housing, Mandrel, Vented	79	127498	Bushing, Large, Brass
15	110485X	Bearing, Ball, Mandrel	80	153701	Spring, Mower Clutch
16	140329	Stripper, Vented Mower Deck	81	73350600	Nut, Hex, Jam 3/8-16
17	72110610	Bolt, Carriage 3/8-16 x 2-1/4	82	142028	Trunnion
18	72140505	Bolt, Carriage 5/16-18 x 5/8	83	120958X	Washer Sintered
19	132827	Bolt, Shoulder	84	156084	Keeper, Belt Idler
20	136888	Baffle, Vortex	85	72140618	Bolt, RdHd Sqnk 3/8-16 x 2-1/4 Gr. 5
21	73680500	Nut Crownlock 5/16-18	92	STD541437	Locknut, Hex W/Wash Insert
22	134753	Stiffener Bracket	101	136420	Mulcher cover
23	131267	Bracket, Deflector	102	71161010	Screw
24	105304X	Cap, Sleeve	103	19061216	Washer #10
25	123713X	Spring, Torsion, Deflector	104	STD551110	Washer, Lock
26	110452X	Nut, Push	105	130758	Latch Assembly, Bagger
27	130968	Shield, Deflector	106	2029J	Nut, Weld
28	19111016	Washer 11/32 x 5/8 x 16 Gauge	111	155197	Bracket, Gauge, Wheel L.H.
29	131491	Rod, Hinge	112	155198	Bracket, Gauge, Wheel R.H.
30	138776	Bolt 5/16-18 x 1.25	113	17490512	Screw, Thdrol 5/16 -18 x 3/4
31	129963	Washer, Spacer	114	STD541431	Nut, Hex Keps 5/16-18 UNC
32	153535	Pulley, Mandrel	115	72110504	Bolt, Carriage 5/16 UNC x 1/2
33	137266	Nut, Flanged, Toplock 9/16	116	137644	Bolt, Shoulder
34	STD533717	Bolt	117	133957	Wheel, Gauge
35	133835	Fastner, Christmas Tree	118	73930600	Nut, Centerlock 3/8-16
36	131494	Pulley, Idler, Flat	119	STD551037	Washer 3/8 x 7/8 x 14 Ga.
37	STD551037	Washer 13/32 x 13/16 x 16 Gauge	121	143723	Bracket, Extruded Gauge Wheel
40	STD541437	Nut, Crownlock	128	153390	Washer Felt
41	133551	Rod, Pivot, with Nibs	129	19131312	Washer 13/32 x 13/16 x 12 Ga
43	140083	Rod, Clutch, Secondary, with Nibs	130	74780616	Bolt Fin Hex 3/8-16 UNC x 1 Gr5
44	140088	Guard, Mandrel, LH	131	72140608	Bolt Rdhd Sqnk 3/8-16 UNC x 1
45	STD624003	Retainer	132	19132203	Spacer Washer 13/32 I.D. x 1-3/8 O.D. x 1/4
46	137729	Screw, Hex Hd, Thdcut 1/4-20 x 5/8	--	130794	Mandrel Assembly (Includes Key Numbers 8-10, 12-15, 31 and 33)
48	133944	Washer, Hardened	--	145411	Mower Deck, Complete (Standard Deck; Order Mulcher Plate and Gauge Wheel Components Separately - Key Nos. 101-106, 111-119, 121)
49	155066	Roller Assembly, Cam Follower			
50	131340	Bolt, Shloulder #10-24 Grade 5			
51	STD541410	Locknut			
52	139888	Bolt, Shoulder 5/16-18 UNC			
53	131845X900	Arm Assembly, Pad, Brake			
54	133943	Washer, Hardened			
55	155046	Arm, Idler			
56	122052X	Spacer, Retainer			

NOTE: All component dimensions given in U.S. inches
1 inch = 25.4 mm

REPAIR PARTS

TRACTOR - - MODEL NUMBER 917.258560

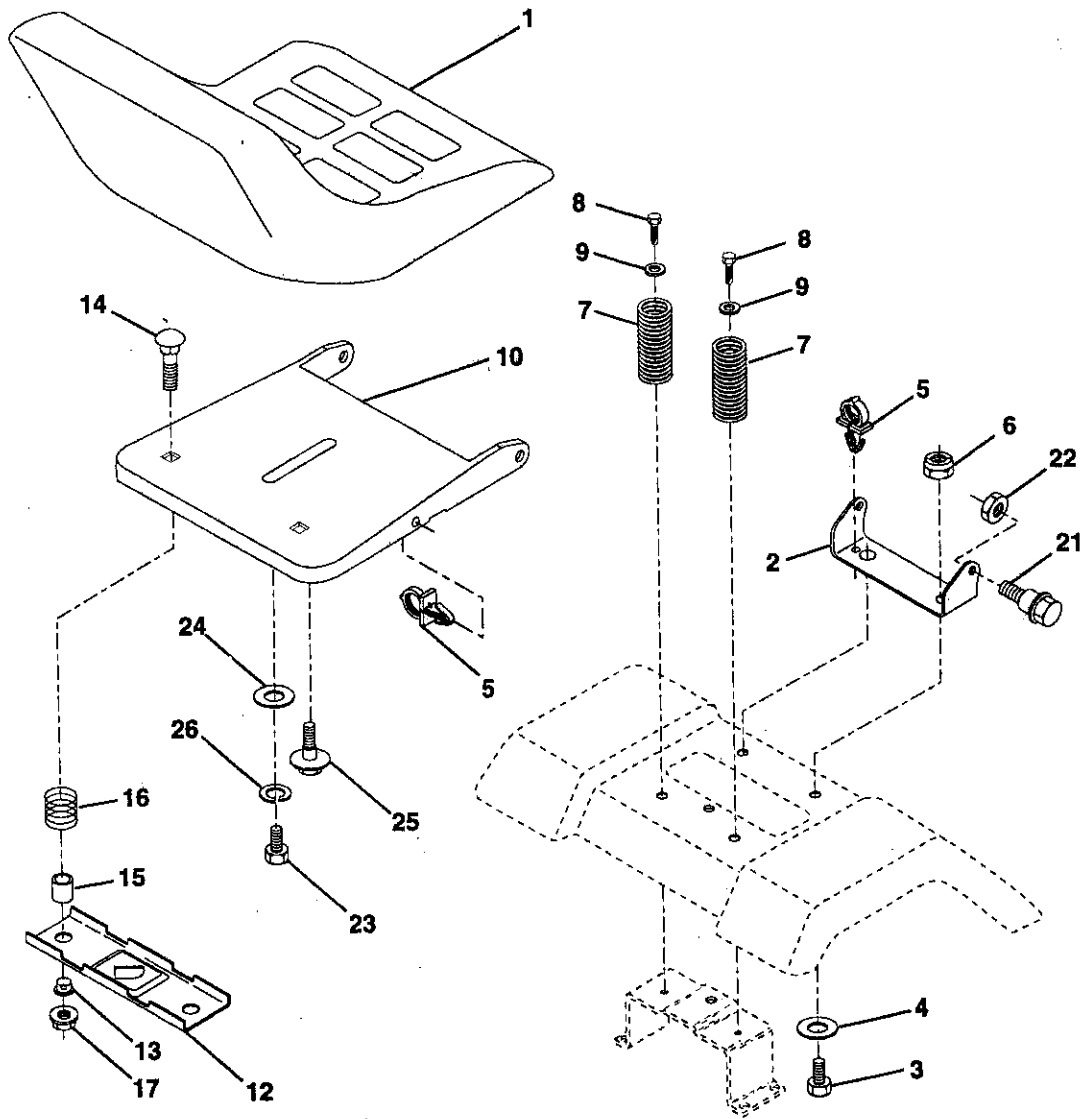
SEAT ASSEMBLY

REPI

MOWI

KEY
NO.

1 2 3 4 5



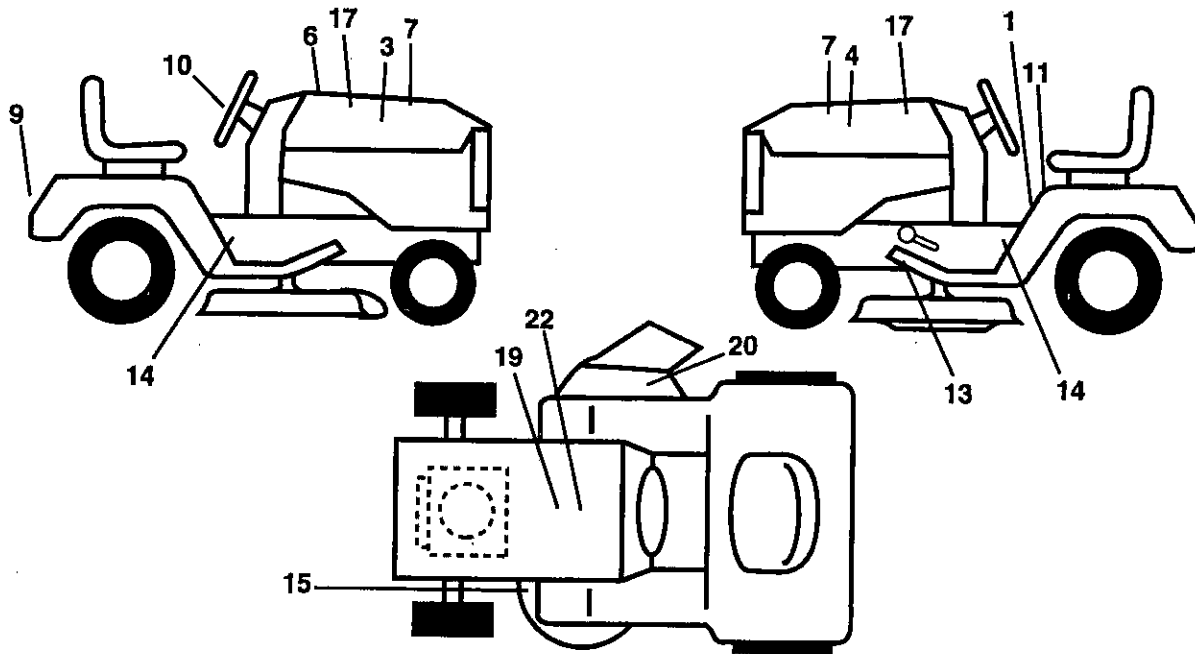
KEY NO.	PART NO.	DESCRIPTION	KEY NO.	PART NO.	DESCRIPTION
1	140123	Seat	13	121248X	Bushing Snap Blk Nyl 50 Id
2	140551	Bracket Pnt Pivot Seat (blk)	14	72050411	Bolt Rdhd Sht Nk 1/4-20x1-3/8
3	74760616	Bolt Fin Hex 3/8-16 UNC x 1	15	134300	Spacer Split 28 X 96 Zinc
4	19131610	Washer Flat 13/32 x 1 x 10 Ga	16	121250X	Spring Cprsn 1 27 Blk Pnt
5	145006	Clip Push-In	17	123976X	Nut Lock 1/4 Lge Flg Gr 5 Zinc
6	STD541437	Nut Lock Hex W/Ins 3/8 -16 UNC	21	153236	Bolt Shoulder 5/16-18 Unc
7	124181X	Spring Seat Cprsn 2 250 Blk Zi	22	STD541431	Nut Lock Hex W/Ins 5/16-18
8	17490616	Screw 3/8-16x1	23	74780814	Bolt Fin Hex 1/2-13 X 7/8 Gr 5
9	19131614	Washer 13/32 x 1 x 14 Ga	24	19171912	Washer 17/32 X 1-3/16 X 12 Ga
10	155925	Pan Pnt Seat (blk)	25	127018X	Bolt Shoulder 5/16-18 X 62
12	121246X	Bracket Pnt Mounting Switch	26	STD551150	Washer Lock Hvy Hlcl Spr 1/2

NOTE: All component dimensions given in U.S. inches
1 inch = 25.4 mm

REPAIR PARTS

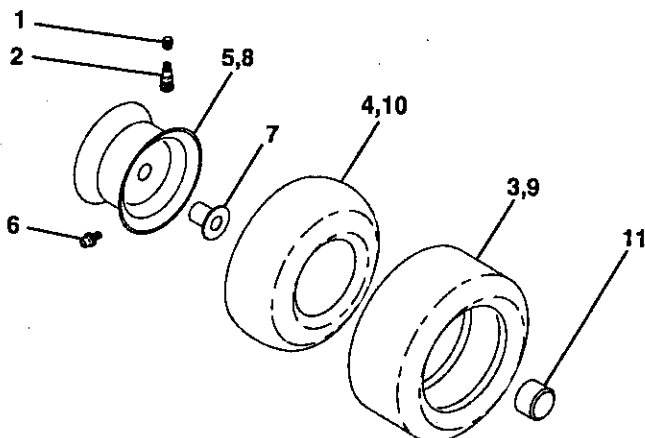
TRACTOR - - MODEL NUMBER 917.258560

DECALS



KEY NO.	PART NO.	DESCRIPTION	KEY NO.	PART NO.	DESCRIPTION
1	156439	Decal Fender Danger Sears	15	136832	Decal Mower Drive Schematic
3	151299	Decal Hood Rh Craftsman	17	156798	Decal Insert, Hood
4	151300	Decal Hood Lh Craftsman	19	138047	Decal Battery Diehard Sears
6	133644	Decal Maint Customer Sears Dom	20	156787	Decal Deck Mower EZ3 Mulching
7	150927	Decal Panel Side B&S	22	149516	Decal Battery
9	146709	Decal Fender Craftsman Gold	--	138311	Decal Lift Handle
10	150333	Decal Cap CNSMR Help Line SRS	--	156808	Manual, Owner's (English)
11	156368	Decal Fender STLT Oper Inst E/S	--	156809	Manual, Owner's (Spanish)
13	146046	Decal V-belt Dr Sch Tractor E	--	154515	Pad Footrest Lh STLT
14	147139	Decal Chassis 42"	--	154516	Pad Footrest Rh STLT

WHEELS & TIRES



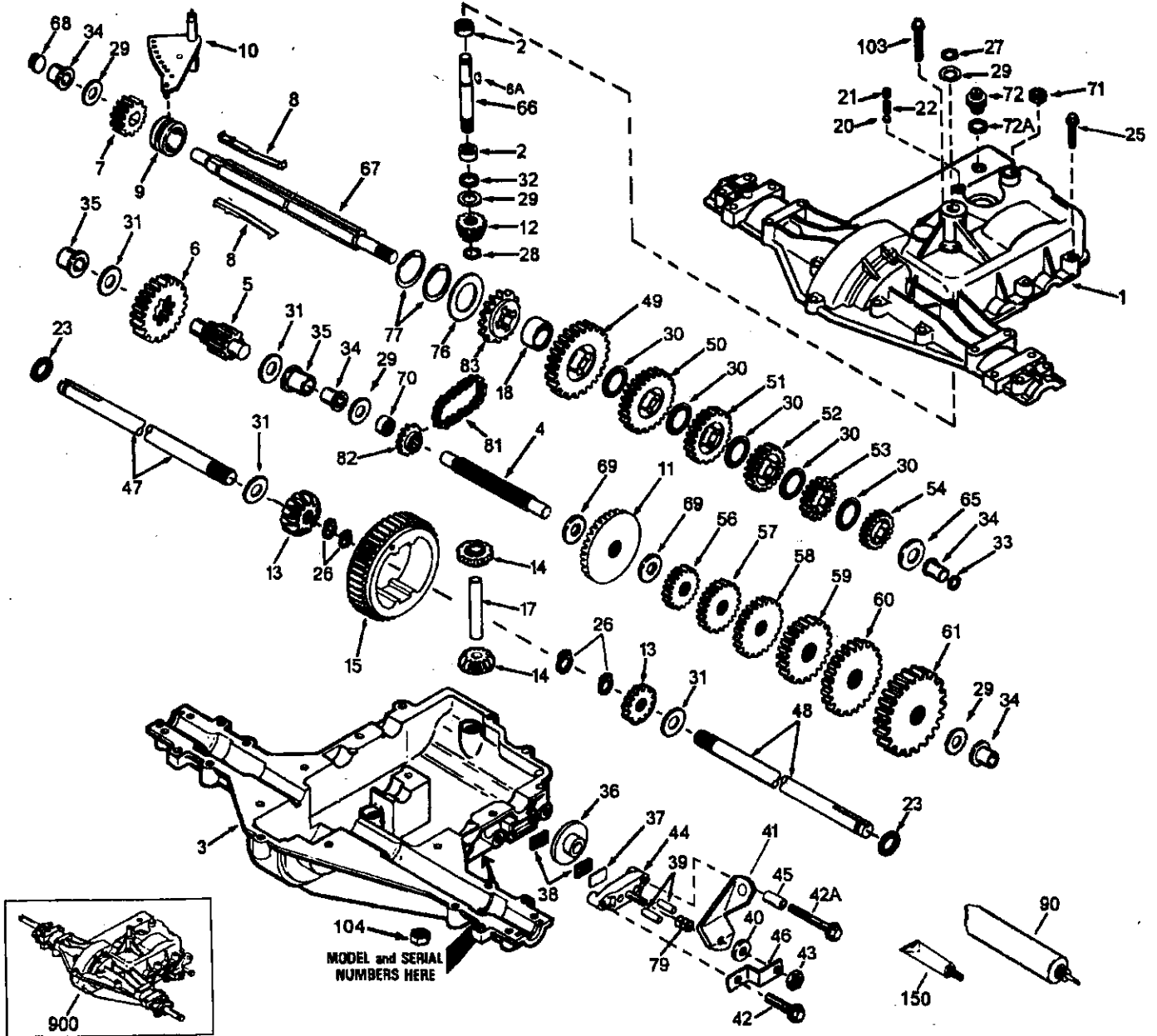
KEY NO.	PART NO.	DESCRIPTION
1	59192	Valve Cap, Tire
2	65139	Stem, Valve
3	106222X	Tire, Front
4	59904	Tube, Front Tire (Not Provided, Service Item Only)
5	106732X427	Rim, Front
6	278H	Fitting, Grease (Front Wheel Only)
7	9040H	Bearing, Flange (Front Wheel Only)
8	106108X427	Rim, Rear
9	122082X	Tire, Rear
10	7152J	Tube, Rear Tire (Not Provided, Service Item Only)
11	104757X	Cap, Axle
--	144334	Sealant, Tire (10 oz. Tube)

NOTE: All component dimensions given in U. S. inches
1 inch = 25.4 mm

REPAIR PARTS

TRACTOR -- MODEL NUMBER 917.258560

PEERLESS TRANSAXLE - MODEL NUMBER 930-057A



REPAIR PARTS

TRACTOR - - MODEL NUMBER 917.258560

PEERLESS TRANSAXLE - MODEL NUMBER 930-057A

REF PART NO. NO.	DESCRIPTION	REF PART NO. NO.	DESCRIPTION
1 772108A	Cover, Transaxle	43 792075	Locknut 5/16-24
2 780086A	Bearing, Needle	44 790025	Holder, Brake Pad
3 770102A	Case, Transaxle	45 786066	Spacer
4 776260A	Shaft, Counter	46 786086	Bracket, Brake Lever
5 776219B	Shaft and Pinion Assembly, Output	47 774690	Axle 11-5/16" long
6 778139	Gear, Output, 35 Teeth	48 774691	Axle 16-1/2" long
7 778136	Gear, Spur, 15 Teeth, Steel	49 778215	Gear, Spur, 37 Teeth, Steel (1 ⁿ)
8 792136A	Key, Shift	50 778125	Gear, Spur, 35 Teeth (2 ⁿ)
8A 792047	Key, Woodruff	51 778124A	Gear, Spur, 30 Teeth (3 ⁿ)
9 784352	Collar, Shifter	52 778123A	Gear, Spur, 25 Teeth (4 ⁿ)
10 784355	Rod and Fork Assembly, Shift	53 778122A	Gear, Spur, 22 Teeth (5 ⁿ)
11 778229	Gear, Bevel, 42 Teeth	54 778273	Gear, Spur, 19 Teeth, Steel (6 ⁿ)
12 778113A	Bevel Pinion, Input	56 778230	Gear, Spur, 12 Teeth, Steel (1 ⁿ)
13 778221	Gear, Bevel, 16 Teeth	57 778151	Gear, Spur, 15 Teeth (2 ⁿ)
14 778068	Gear, Bevel Pinion	58 778126A	Gear, Spur, 20 Teeth (3 ⁿ)
15 778260	Gear, Ring	59 778127A	Gear, Spur, 25 Teeth (4 ⁿ)
17 786139	Pin, Drive	60 778128A	Gear, Spur, 28 Teeth (5 ⁿ)
18 786102	Spacer, Neutral	61 778163	Gear, Spur, 31 Teeth (6 ⁿ)
20 792077	Ball, Steel 5/16" diameter	65 780109	Washer, Thrust
21 792078	Set Screw 3/8-16 x 3/8	66 776135	Shaft, Input
22 792079	Spring	67 776315A	Shaft, Brake, 4 Keyed
23 788061	Ring, Seal	68 786116A	Plug
25 792073	Screw, Flanged Hex Head, Thread Forming 1/4-20 x 1-1/4	69 780051	Washer, Thrust
26 792125	Ring, Retainer (4 Required, Package of 2)	70 786118	Spacer
27 792035	Ring, Retainer	71 788069	Square Cut Ring
28 788040	Ring, Retainer	72 792165	Plug, Threaded 9/16-18
29 780072	Washer, Thrust	72A 788091	"O" Ring
30 780108	Washer, Thrust	76 780090	Washer, Thrust
31 780001	Washer	77 788078A	Ring, Retaining, Inverted (Package of 2)
32 792001	"O" Ring	79 792144	Spring, Brake
33 788095	Seal, Square Cut	81 786081	Chain, Roller (Number 41 Chain, 24 Links)
34 780105A	Bushing, Flanged	82 786082	Sprocket, 9 Teeth (Reverse)
35 780118A	Bushing, Flanged	83 786123	Sprocket, 18 Teeth (Reverse)
36 790003	Disk, Brake	90 788067B	Grease, Bentonite, 32 Ounce Bottle
37 790007	Plate, Brake Pad	103 792166	Screw 1/4-20 x 2
38 799021	Pad, Brake (Package of 2)	104 792167	Locknut 1/4-20
39 786026	Pin, Dowel	150 788093	Gasket Eliminator (Loctite #515)
40 792076A	Washer, Flat	900 794602	Replacement Transaxle
41 790079	Lever, Brake		
42 792073	Screw, Flanged Hex Head, Thread Forming 1/4-20 x 1-1/4		
42A 792085A	Screw 1/4-20 x 2-1/4		

NOTE: All component dimensions given in U.S. inches
1 inch = 25.4 mm

Parts must be ordered from Tecumseh Products Co.

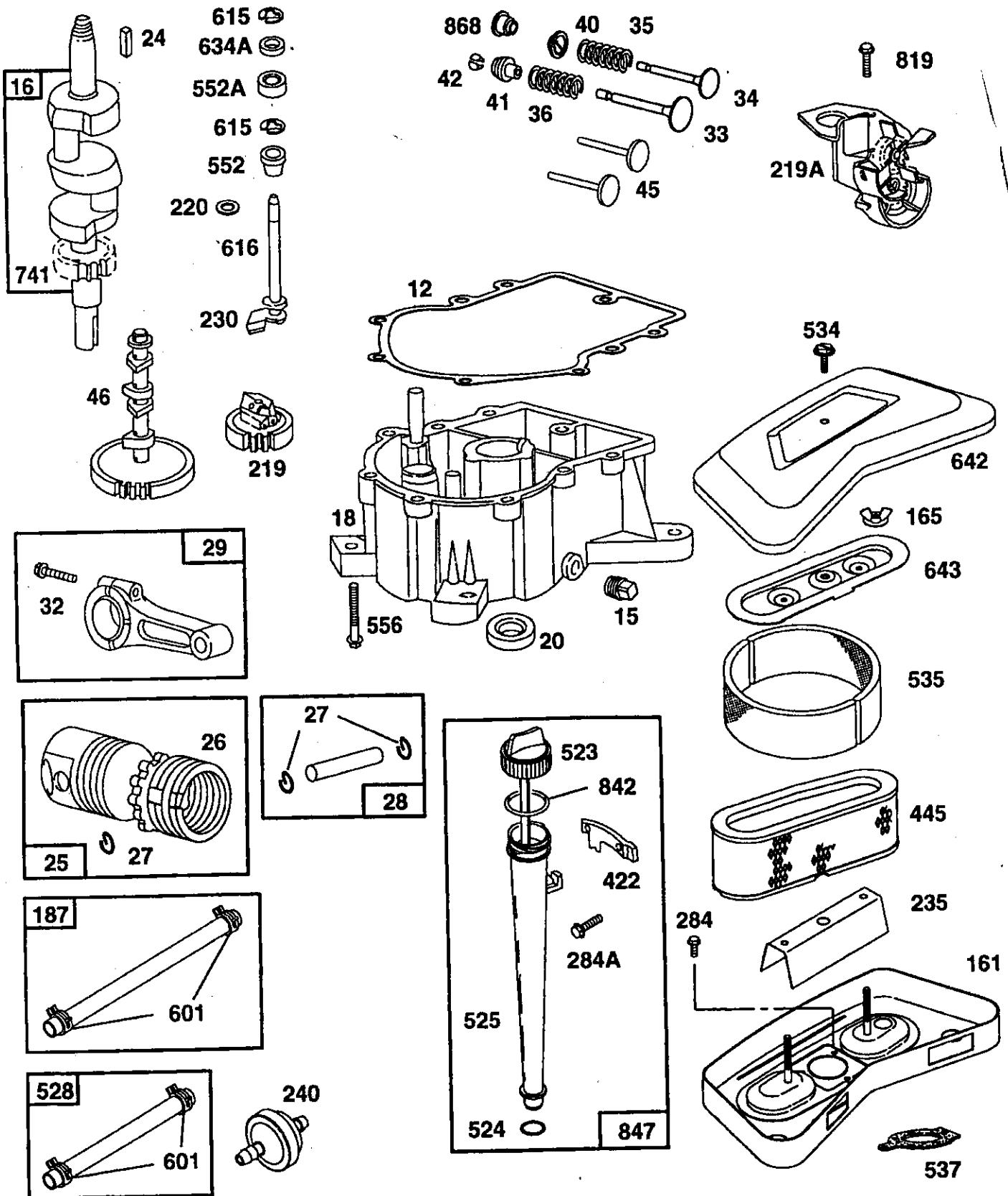
REPAIR PARTS

TRACTOR - - MODEL NUMBER 917.258560

BRIGGS & STRATTON ENGINE - MODEL NUMBER 42A707, TYPE NUMBER 1624-01

R

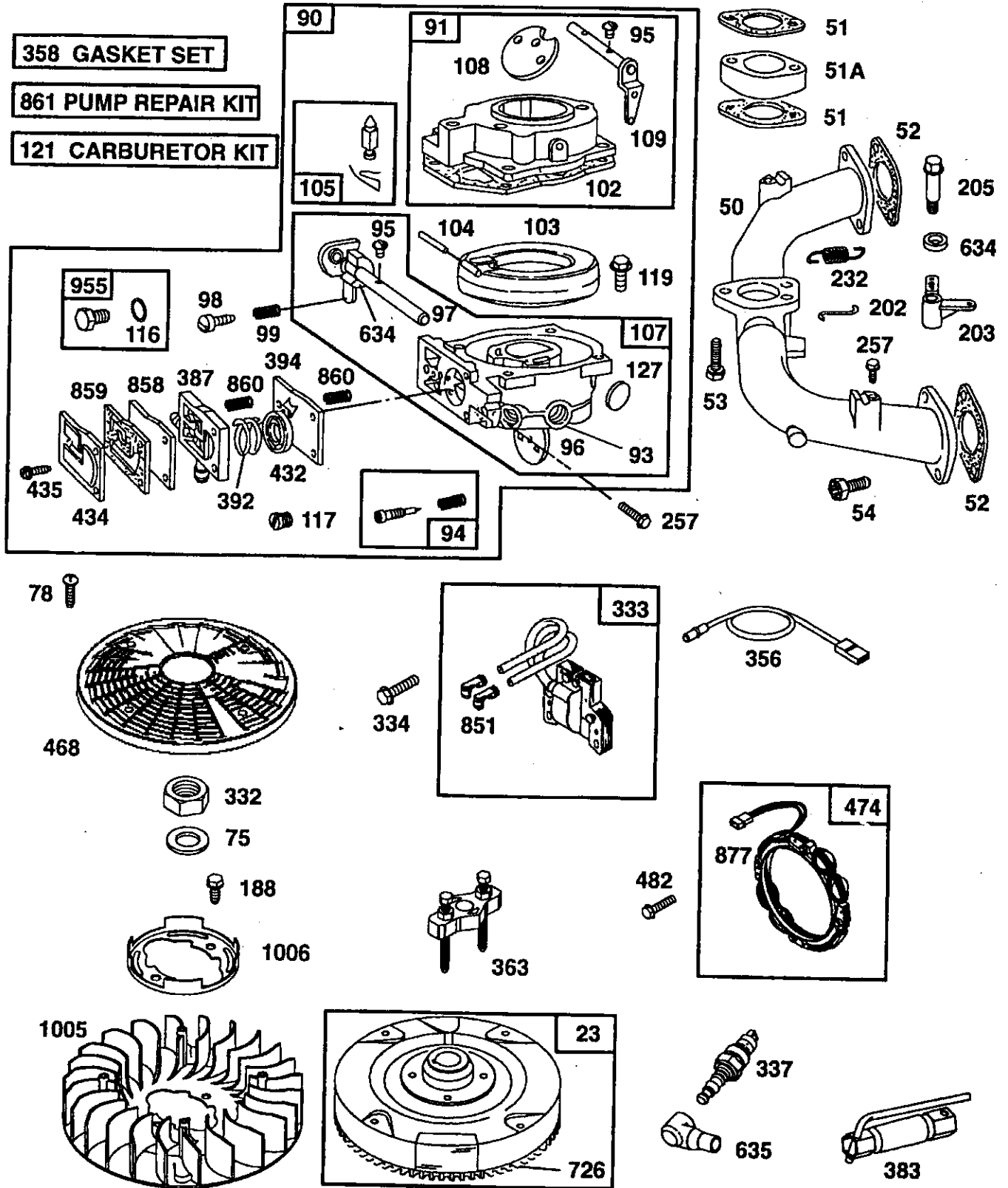
P



REPAIR PARTS

TRACTOR - - MODEL NUMBER 917.258560

BRIGGS & STRATTON ENGINE - MODEL NUMBER 42A707, TYPE NUMBER 1624-01



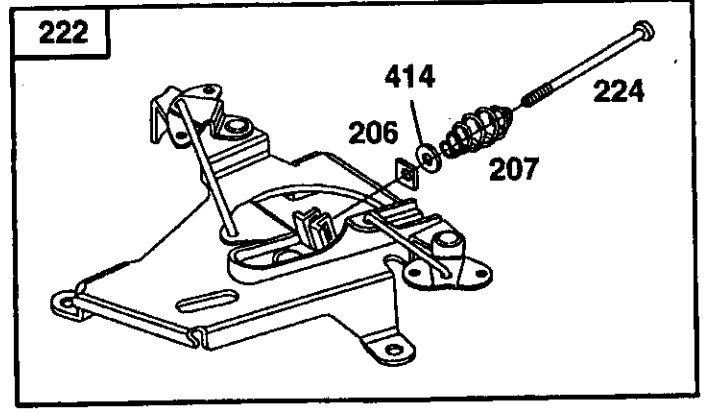
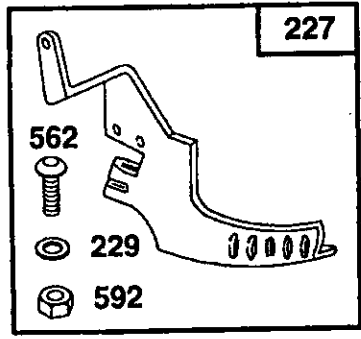
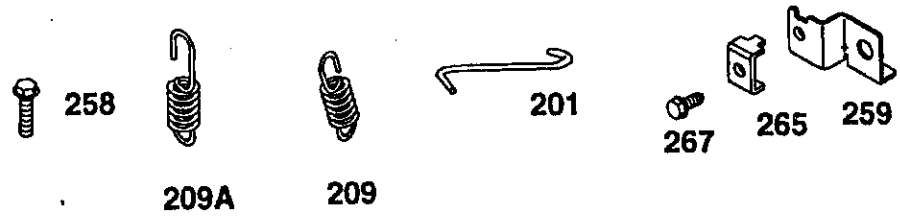
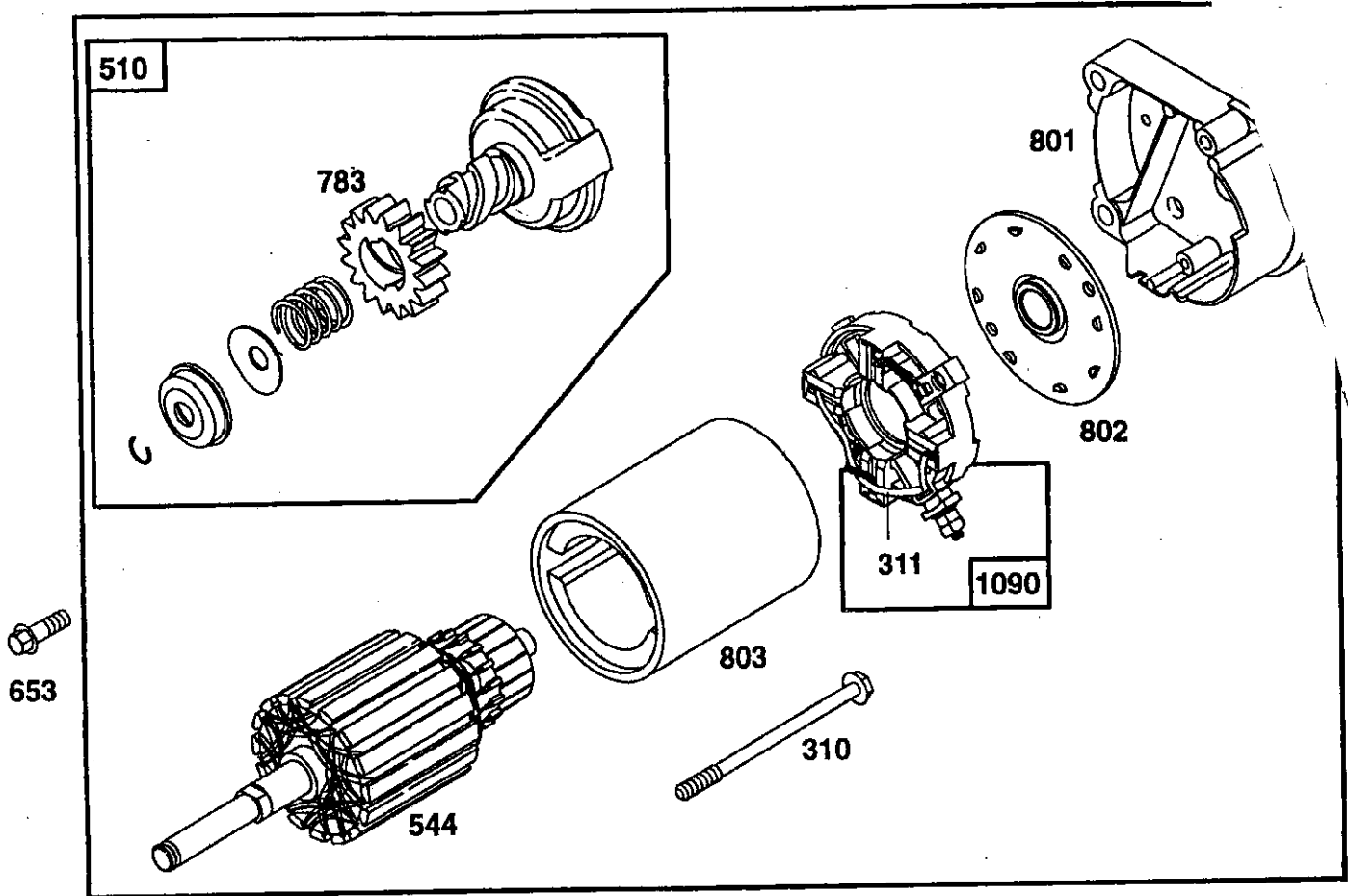
REPAIR PARTS

TRACTOR -- MODEL NUMBER 917.258560

BRIGGS & STRATTON ENGINE - MODEL NUMBER 42A707, TYPE NUMBER 1624-C

RE

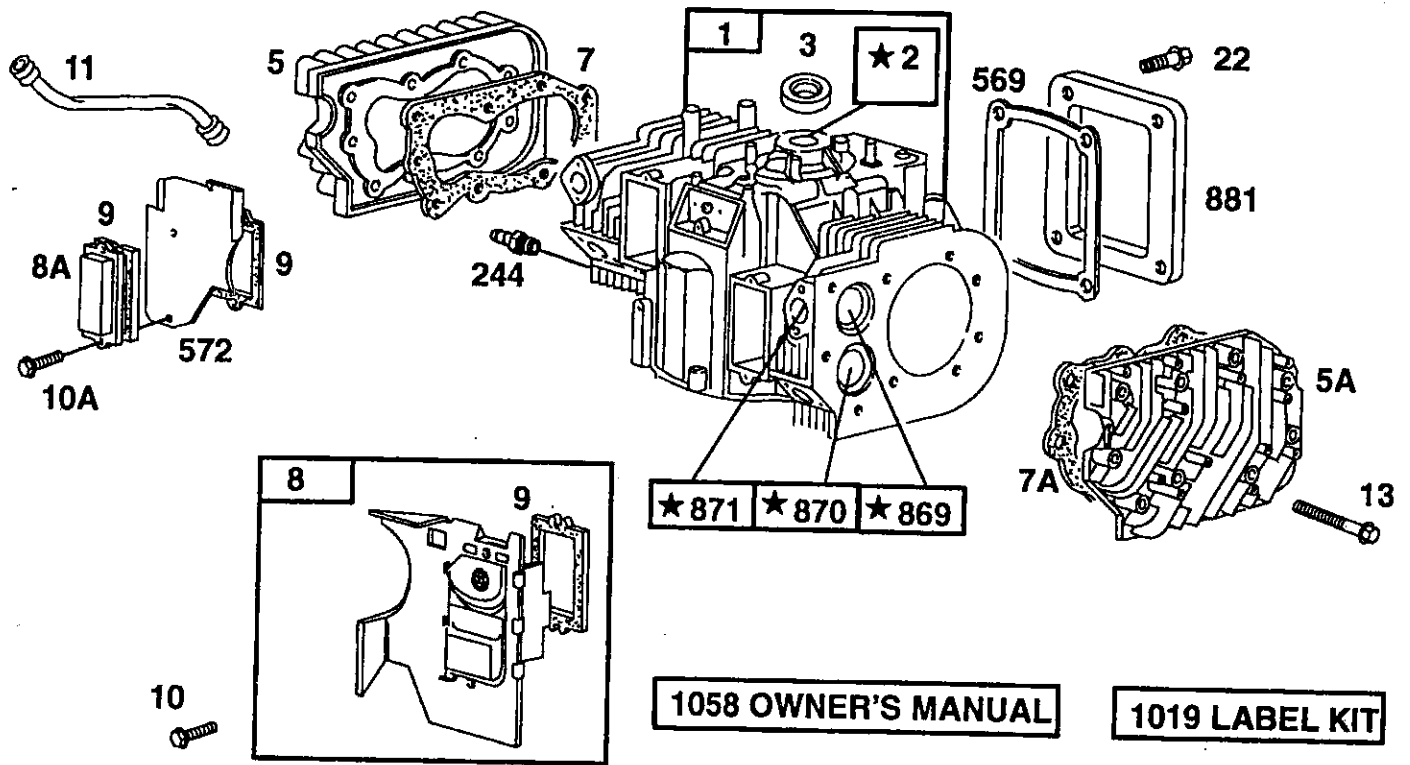
BF



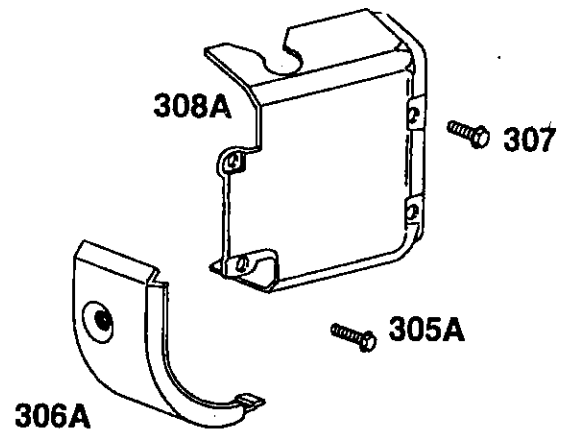
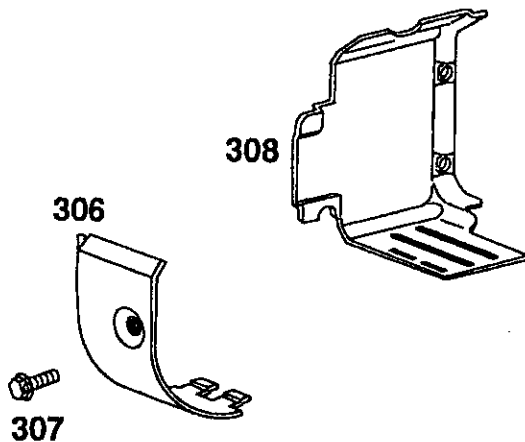
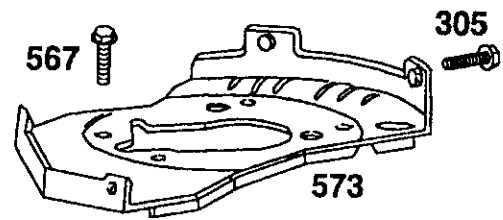
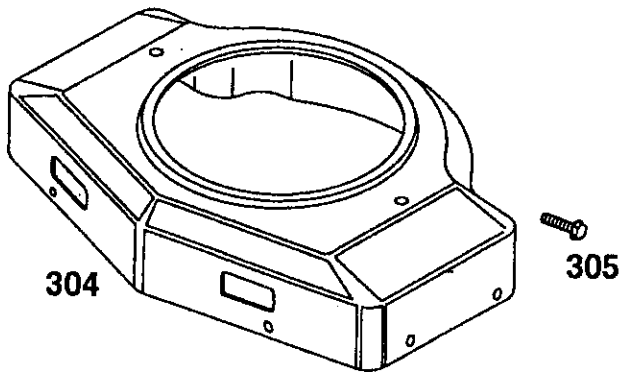
REPAIR PARTS

TRACTOR - - MODEL NUMBER 917.258560

BRIGGS & STRATTON ENGINE - MODEL NUMBER 42A707, TYPE NUMBER 1624-01



★ REQUIRES SPECIAL TOOLS TO INSTALL. SEE REPAIR INSTRUCTION MANUAL.



REPAIR PARTS

TRACTOR - - MODEL NUMBER 917.258560

BRIGGS & STRATTON ENGINE - MODEL NUMBER 42A707, TYPE NUMBER 1624-01

KEY PART NO. NO.	DESCRIPTION	KEY PART NO. NO.	DESCRIPTION
1 497074	Cylinder Assembly	54 94764	Screw, Sems
2 399265	Bushing	75 222511	Washer, Spring
3 391086	* Seal, Oil	78 94834	Screw, Sems
5 493457	Head, Cylinder #1	90 495181	Carburetor
5A 493458	Head, Cylinder #2	91 495035	Body Assembly, Upper
7 271867	* Gasket, Cylinder Head #1	93 231209	Bushing, Throttle Shaft
7A 271868	* Gasket, Cylinder Head #2	94 491538	** Valve, Idle Adjust
8 495754	Breather Assembly #1	95 93499	Screw, Sems
8A 222892	Cover, Breather Cylinder #2 (Used Only on Key #572, Air Baffle with Holes for Mounting)	96 221939	Valve, Throttle
		97 392672	Shaft, Throttle
		98 91920	Screw, Fillister Head
		99 26157	Spring, Throttle Adjust
9 27803	* Gasket, Breather	102 271607	** Gasket, Carburetor Body
10 94382	Screw, Sems	103 298514	Float, Carburetor
10A 94830	Screw, Sems	104 230896	** Pin, Float Hinge
11 280225	Tube, Breather	105 394683	** Valve, Needle
12 271703	* Gasket, Crankcase, .015" Thick	107 491543	Body Assembly, Lower
	* Gasket, Crankcase, .005" Thick	108 223534	Valve, Choke
	* Gasket, Crankcase, .009" Thick	109 392673	Shaft, Choke
13 94565	Screw, Cylinder Head	116 280474	* O-Ring
15 94239	Plug, Oil Drain	117 231338	Jet, Needle Valve, Fixed
16 394028	Crankshaft		Jet, Needle Valve, Fixed, High Altitude
	Timing Gear Key		Screw, Hex Head
18 493304	Sump, Engine	119 94152	Carburetor Kit
20 291675	* Seal, Oil	121 491539	** Plug, Welch
22 94724	Screw, Sems	127 223472	Base, Air Cleaner
23 491180	Flywheel	161 496599	Nut, Wing
24 222698	Key, Flywheel	165 94289	Line, Fuel, 28" Long (Cut to Suit)
25 394955	Piston Assembly, Standard Size	187 299146	Screw
	Piston Assembly, .010" Oversize	188 94627	Link
	Piston Assembly, .020" Oversize	201 262683	Link
	Piston Assembly, .030" Oversize	202 262684	Crank, Bell
26 394958	Ring Set, Standard Size	203 280997	Screw, Hex Head
	Ring Set, .010" Oversize	205 93971	Nut, Square
	Ring Set, .020" Oversize	206 94298	Spring, Control Rod
	Ring Set, .030" Oversize	207 262337	Spring, Governor
27 260924	Lock, Piston Pin	209 262352	Spring, Governor Idle
28 299691	Pin, Piston, Standard Size	209A 261563	Gear, Governor
	Pin, Piston, .005" Oversize	219 394348	Oil Slinger
29 394306	Rod, Connecting, Standard Size	219A 393415	Bracket, Control
	Rod, Connecting, .020" Undersize	222 491282	Screw, Pan Head
32 94671	Screw, Connecting Rod	224 94297	Lever Assembly, Governor
33 390420	Valve, Exhaust	227 491297	
34 261528	Valve, Intake		
35 65906	Spring, Valve, Intake		* Included in Gasket Set (495868)
36 26828	Spring, Valve, Exhaust		** Included in Carburetor Kit (491539)
40 221596	Retainer, Valve, Intake		*** Included in Carburetor Kit (491539), and Pump Repair Kit (393397)
41 292260	Retainer, Valve, Exhaust		**** Included in Gasket Set (495868), and Carburetor Kit (491539)
42 494553	Keeper, Valve		
45 261368	Tappet, Valve		
46 213520	Gear, Cam		
50 213290	Manifold, Intake		
51 271412	**** Gasket, Carburetor Mounting		
51A 281411	Spacer, Carburetor		
52 270884	* Gasket, Intake Manifold Mounting		
53 93970	Screw, Hex Head, Carburetor to Manifold		

NOTE: All component dimensions given in U.S. inches
1 inch = 25.4 mm

REPAIR PARTS

TRACTOR - - MODEL NUMBER 917.258560

BRIGGS & STRATTON ENGINE - MODEL NUMBER 42A707, TYPE NUMBER 1624-01

KEY PART NO.	NO.	DESCRIPTION	KEY PART NO.	NO.	DESCRIPTION
230	223882	Washer, Governor Crank, Inside	569	272645	* Gasket, Base
235	224995	Shield, Fuel Spray	572	224816	Baffle, Air, Cylinder #2
240	394358	Filter, Fuel	573	491304	Plate, Back
244	230318	Connector, Fuel Line	592	92278	Nut, Hex.
257	93897	Screw, Sems	601	93053	Clamp, Hose
258	94623	Screw, Sems	615	94296	Retainer, E-Ring
259	223890	Bracket, Cable	616	491530	Crank, Governor
265	221535	Clamp, Casing	634	271013	** Washer, Throttle Shaft
267	94906	Screw, Sems	634A	491287	* Seal, Governor Shaft
284	94674	Screw, Hex Head	635	66538	Boot, Spark Plug
284A	94694	Screw, Hex Head	642	225008	Cover, Air Cleaner
304	495587	Housing, Blower, Red	643	496700	Plate, Air Cleaner
305	94786	Screw, Sems	653	93585	Screw, Hex Head
305A	93343	Screw, Sems	726	391362	Gear, Ring (Includes Mounting Parts)
306	222846	Shield, Cylinder	741	262989	Gear, Timing
306A	223734	Shield, Cylinder	783	280104	Gear, Starter
307	94386	Screw, Self-Tapping	801	394860	Cap, Drive
308	224774	Cover, Air Guide	802	497607	Cap, End
308A	224775	Cover, Air Guide	803	497604	Housing, Starter
309	497596	Motor, Starter	819	94675	Screw, Hex Head
310	94003	Bolt, Thru	842	270920	* Seal, Cap
311	497608	Brush Set	847	495715	Tube Assembly, Oil
332	230674	Nut, Hex	851	221798	Terminal, Cable
333	394891	Armature, Magneto	858	270989	*** Diaphragm, Carburetor
334	93381	Screw, Sems	859	271025	*** Gasket, Pump
337	802592	Plug, Spark	860	261358	*** Spring, Diaphragm
356	494795	Wire, Stop	861	393397	Repair Kit, Pump
358	491856	Gasket Set	868	497212	Seal, Valve
363	19203	Flywheel Puller	869	261463	Seat, Valve, Intake
383	89838	Wrench, Spark Plug	870	213316	Seat, Valve, Exhaust
387	280197	Body, Pump	871	261961	Bushing, Guide (Exhaust Only)
392	261395	*** Spring, Diaphragm		231218	Bushing, Guide (Intake, Brass)
394	270988	*** Diaphragm, Carburetor	877	393456	Wire, Alternator
414	220680	Washer	881	495901	Plate, Cover
422	222875	Bracket, Oil Fill	955	397882	Plug and Seal, Solenoid
432	221377	*** Cap, Spring	1005	281053	Fan, Flywheel
434	223688	Cover, Diaphragm	1006	224413	Retainer, Fan
435	93829	Screw, Diaphragm Cover	1019	496726	Label Kit
445	394019	Filter, Air	1058	272112	Owner's Manual
468	497908	Screen, Rotating	1090	497605	Retainer, Brush
474	393474	Alternator, Dual Circuit			RPM Settings: Low Speed: 1600-1800 High Speed: 3200-3400
482	93621	Screw, Sems			* Included in Gasket Set (495868)
510	497606	Drive, Starter			** Included in Carburetor Kit (491539)
523	494947	Cap, Oil Fill			*** Included in Carburetor Kit (491539), and Pump Repair Kit (393397)
524	271157	* Seal, Fill Tube			**** Included in Gasket Set (495868), and Carburetor Kit (491539)
525	495348	Tube, Oil Fill (Includes Seals)			
528	393815	Pipe, Fuel			
534	94823	Screw, Air Cleaner			
535	272490	Filter, Air			
537	271411	**** Gasket, Air Cleaner			
544	497603	Armature, Starter			
552	262332	Lower Bushing, Governor			
552A	262331	Upper Bushing, Governor			
556	93585	Screw, Hex Head			
562	93853	Bolt, Governor Lever			
567	94811	Screw, Hex Head, Back Plate to Cylinder			

NOTE: All component dimensions given in U.S. inches
1 inch = 25.4 mm

SERVICE NOTES
