



**REPAIR PARTS MANUAL**  
**MODEL NO. 259050**  
**Lawn Tractor**

42"

---

**CRAFTSMAN®**

# HOW TO USE THIS MANUAL

This manual is designed to provide the customer with a means to identify the parts on his/her tractor when ordering repair parts. The illustrations may or may not represent the actual assemblies; therefore, it is not recommended to use this manual as a guide to assemble or disassemble the tractor. Some hardware and parts are drawn larger in order to more readily identify them.

Each tractor has its own model number.

The model number for your tractor can be found on the fender under the seat.

When ordering parts, always give the following information:

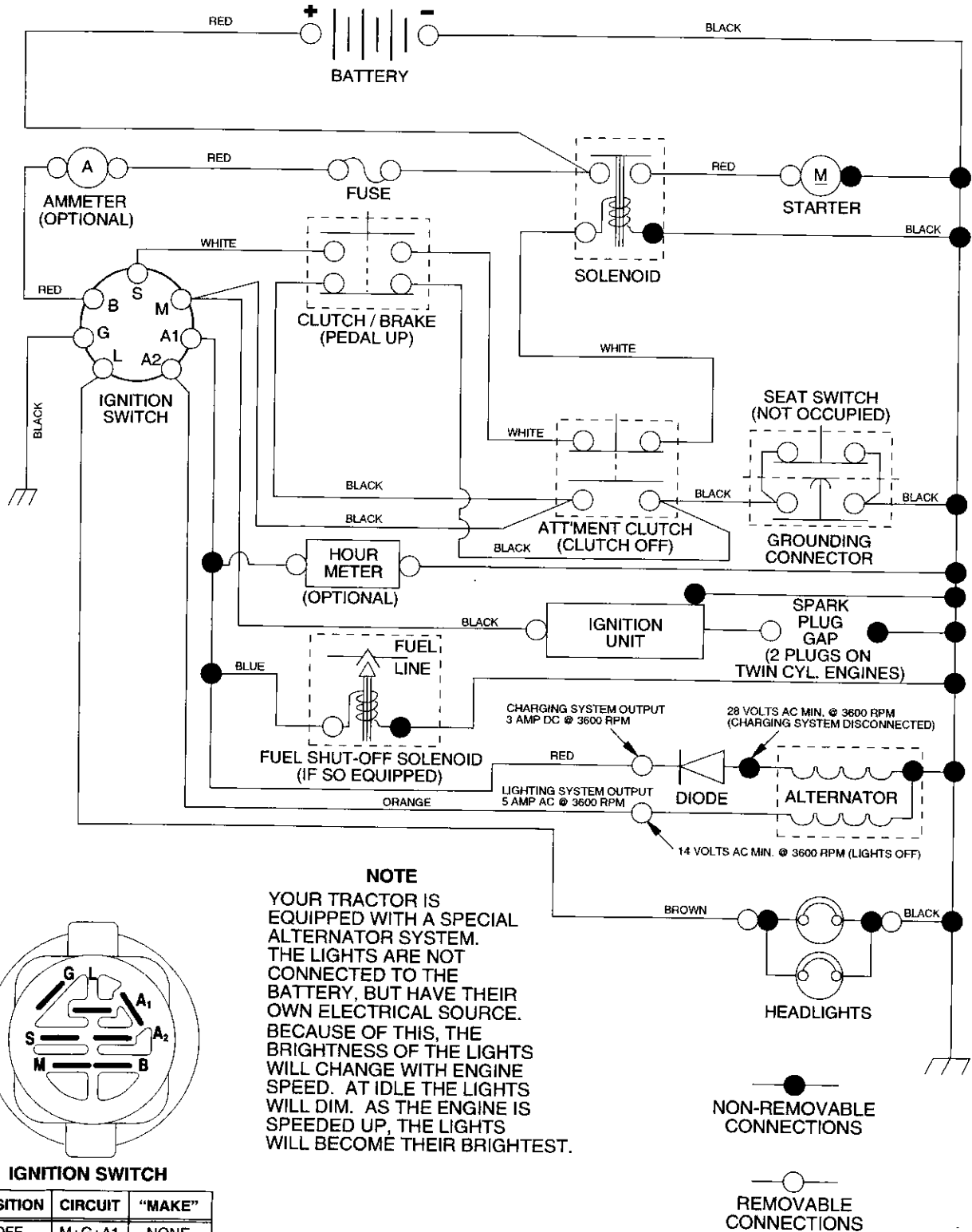
- Product - "Tractor"
- Model Number - "259050"
- Part Number
- Part Description

## TABLE OF CONTENTS

|                               |              |
|-------------------------------|--------------|
| <b>SCHEMATIC</b> .....        | <b>3</b>     |
| <b>ELECTRICAL</b> .....       | <b>4-5</b>   |
| <b>CHASSIS</b> .....          | <b>6-7</b>   |
| <b>DRIVE</b> .....            | <b>8-9</b>   |
| <b>STEERING</b> .....         | <b>10-11</b> |
| <b>SEAT</b> .....             | <b>12</b>    |
| <b>DECALS</b> .....           | <b>13</b>    |
| <b>ENGINE</b> .....           | <b>14-15</b> |
| <b>MOWER LIFT</b> .....       | <b>16-17</b> |
| <b>MOWER DECK</b> .....       | <b>18-19</b> |
| <b>TRANSAXLE</b> .....        | <b>20-21</b> |
| <b>ENGINE BREAKDOWN</b> ..... | <b>22-26</b> |
| <b>WARRANTY</b> .....         | <b>27</b>    |

# TRACTOR- -MODEL NO. 917. 259050

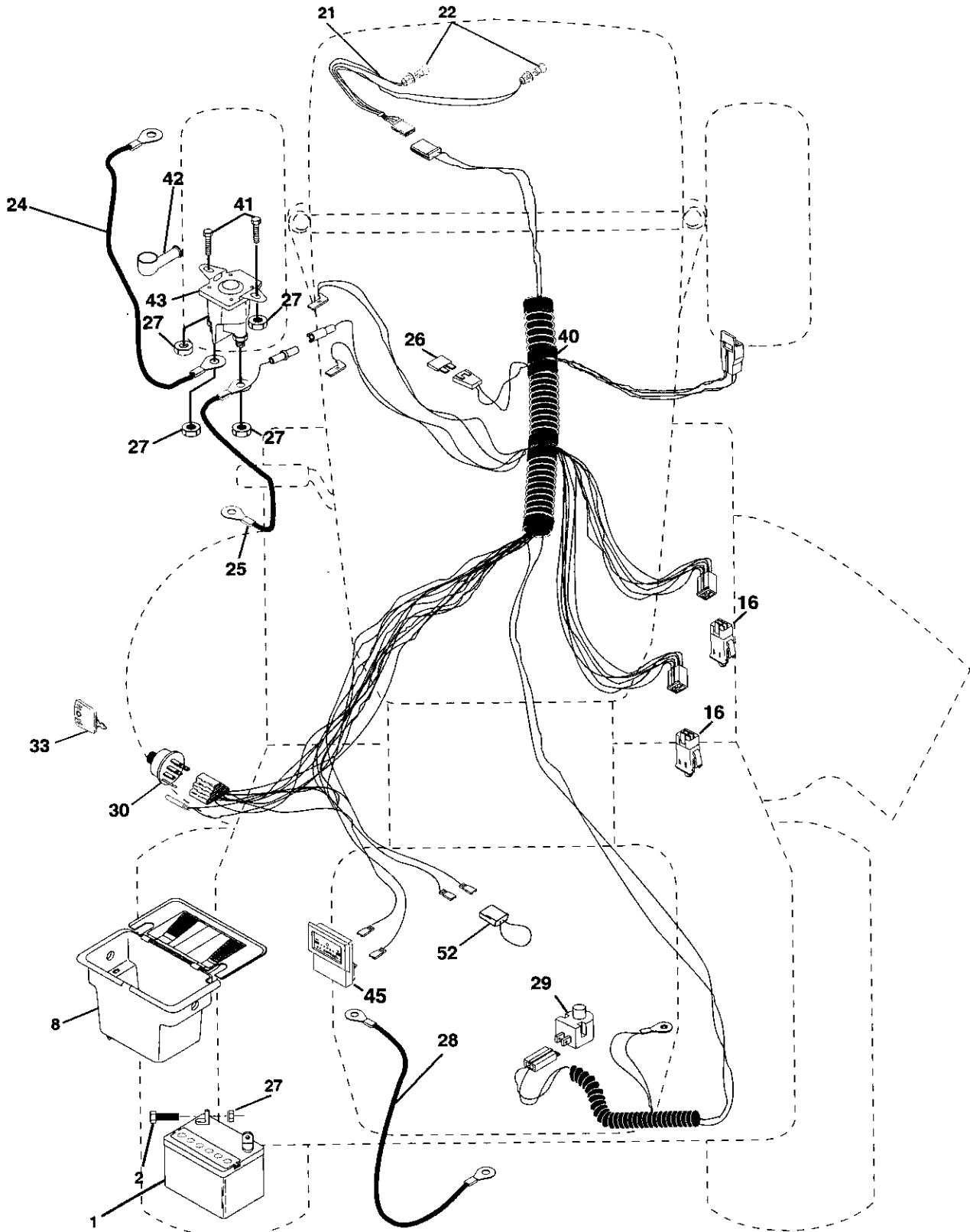
## SCHEMATIC



# REPAIR PARTS

TRACTOR- -MODEL NO. 917. 259050

## ELECTRICAL



# REPAIR PARTS

TRACTOR- -MODEL NO. 917. 259050

## ELECTRICAL

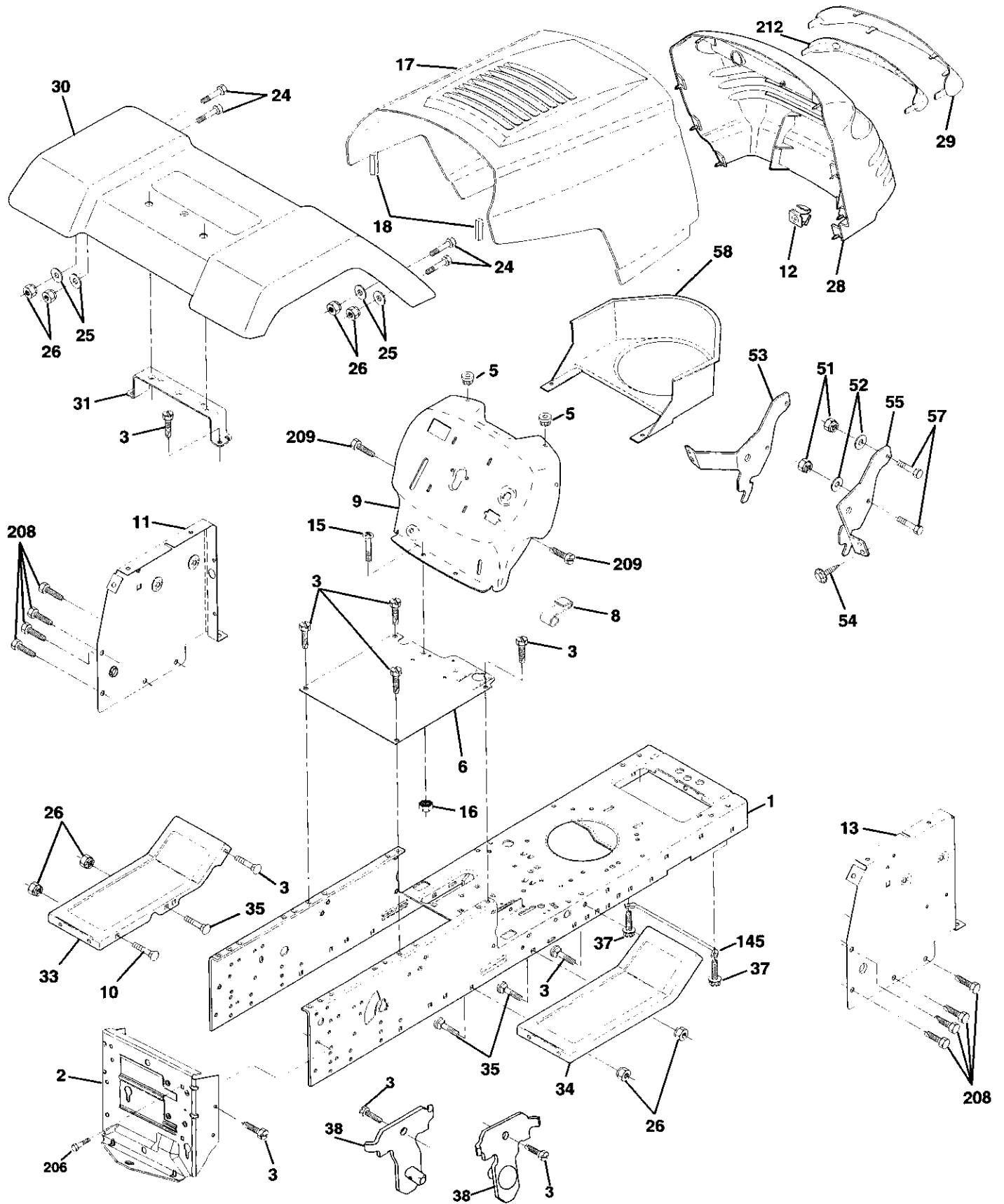
| KEY NO. | PART NO. | DESCRIPTION                     |
|---------|----------|---------------------------------|
| 1       | 144925   | Battery 12 Volt 25 AMP          |
| 2       | 74760412 | Bolt Hex Hd 1/4-20unc X 3/4     |
| 8       | 156417   | Case Battery                    |
| 16      | 153664   | Switch Interlock Push-In        |
| 21      | 166181   | Harness Socket Light W/4152J    |
| 22      | 4152J    | Bulb Light #1156                |
| 24      | 4799J    | Cable Battery 6ga 11" red       |
| 25      | 146147   | Cable Battery 6 Ga W/16 Wir red |
| 26      | 166180   | Fuse 15 AMP                     |
| 27      | 73510400 | Nut Keps Hex 1/4-20 Unc         |
| 28      | 4207J    | Cable Ground 6ga 12" black      |
| 29      | 121305X  | Switch Plunger Nc Gray          |
| 30      | 163968   | Switch Ign Delta Push-In        |
| 33      | 140403   | Key Ign Molded Craftsman, Delta |
| 40      | 170217   | Harness Ign                     |
| 41      | 71110408 | Bolt Blk Hex 1/4-20unc x 1/2    |
| 42      | 131563   | Cover Terminal Red              |
| 43      | 145673   | Solenoid                        |
| 45      | 121433X  | Ammeter Rectangular 6 AMP       |
| 52      | 141940   | Protection Wire Loop            |

**NOTE:** All component dimensions given in U.S. inches  
1 inch = 25.4 mm

# REPAIR PARTS

TRACTOR- -MODEL NO. 917.259050

## CHASSIS AND ENCLOSURES



# REPAIR PARTS

## TRACTOR- -MODEL NO. 917.259050

### CHASSIS AND ENCLOSURES

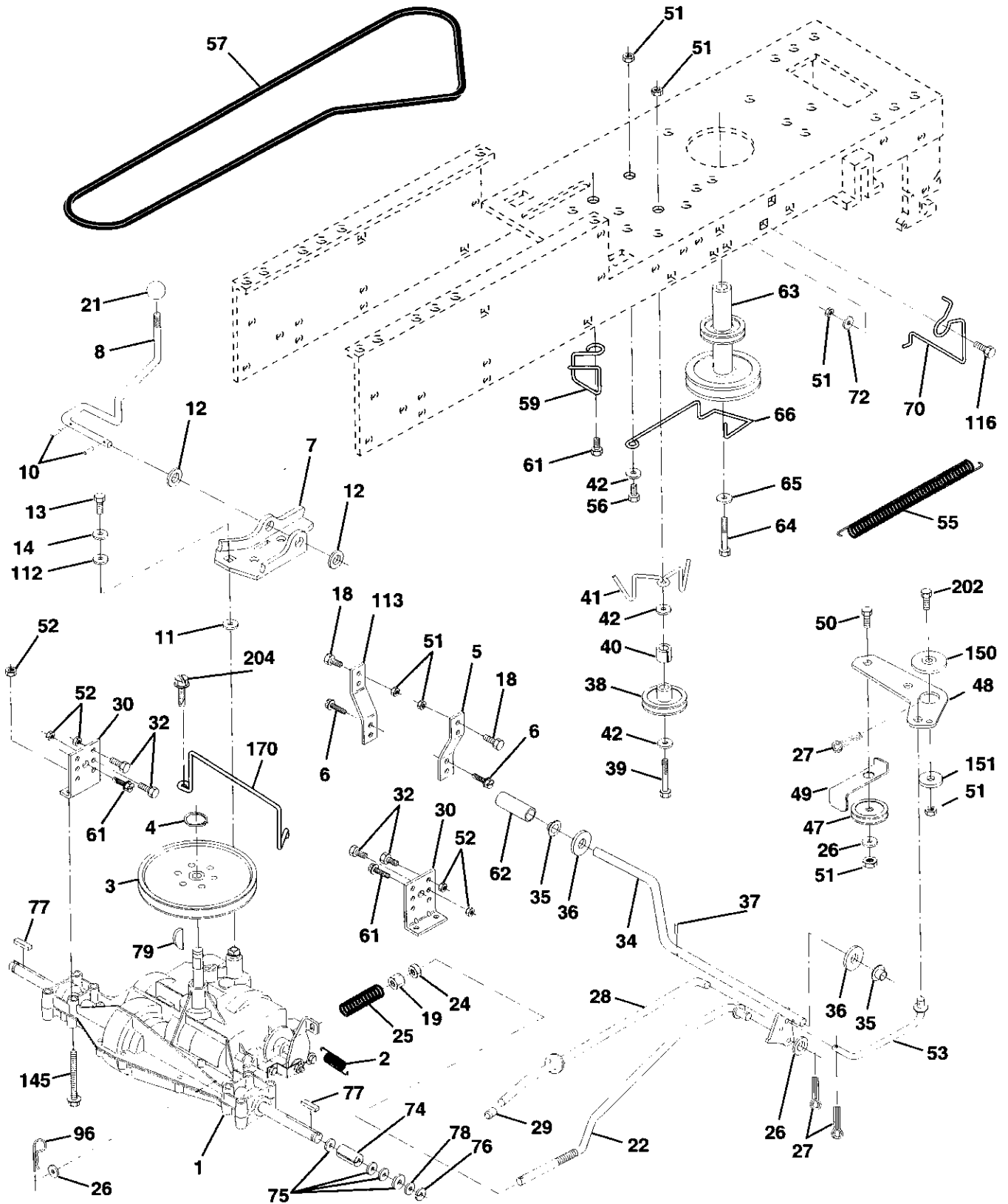
| KEY NO. | PART NO.   | DESCRIPTION                       |
|---------|------------|-----------------------------------|
| 1       | 169831     | Chassis Lt Stamping               |
| 2       | 169061     | Drawbar                           |
| 3       | 17060612   | Screw 3/8-16 x 3/4                |
| 5       | 155272     | BumperHood/Dash                   |
| 6       | 155924X012 | Saddle SLKSCRE FLT SDL            |
| 8       | 126471X    | Clip Insufator .406 Mtg Hole      |
| 9       | 168348X012 | Dash Silkscr Plm Mech Sym         |
| 10      | 72140608   | Bolt RdHd Sqnk. 3/8-16 x 1        |
| 11      | 155927     | Panel Asm. Dash Lh                |
| 12      | 145660     | Clip Tinnerman Grille P/L         |
| 13      | 172107X010 | Panel Dash Rh                     |
| 15      | 74180512   | Screw Mach Trhd 5/16-18unc x 3/4  |
| 16      | 73510500   | Nu Keps 5/16-18unc                |
| 17      | 159639X558 | Hood Pnt Steel Private Label      |
| 18      | 126938X    | BumperHood                        |
| 24      | 74780616   | Bolt Fin Hex 3/8-16 Unc x 1 Gr. 5 |
| 25      | 19131312   | Washer 13/32 x 13/16 x 12 Ga.     |
| 26      | 73800600   | Nut Lock Hex w/Ins 3/8-16 Unc     |
| 28      | 140434     | Grill/lens Asm                    |
| 29      | 140273X599 | Lens Grille Private label         |
| 30      | 169465X558 | Fender Pnt                        |
| 31      | 136619     | Bracket Fender Support            |
| 33      | 145244X558 | Footrest Pnt. Lh                  |
| 34      | 145243X558 | Footrest Pnt. Rh                  |
| 35      | 72110606   | Bolt RdHd Sht. Sqnk. 3/8-16 x 3/4 |
| 37      | 17490508   | Screw Thdrol 5/16-18 x 1/2 Tyl    |
| 38      | 169834     | Bracket Asm. Pivot Mower Rear     |
| 51      | 73800400   | Nut Lock Hex W/Ins. 1/4-20        |
| 52      | 19091416   | Washer 9/32 x 7/8 x 16 Ga.        |
| 53      | 144697     | Bracket Grille LH                 |
| 54      | 161464     | Screw Hex Wshd #8-18 x 7/8        |
| 55      | 144696     | Bracket, Grille RH                |
| 57      | 74780412   | Bolt Fin Hex 1/4-20 x 3/4         |
| 58      | 150127     | Air Duct Private Label LT Engine  |
| 145     | 156524     | Rod Pivot Chassis /Hood           |
| 206     | 170165     | Bolt Shoulder 5/16-18 TT          |
| 208     | 17670608   | Screw Thdrol. 3/8-16 x 1/2        |
| 209     | 17000612   | Screw Hex Wsh Thdrol 3/8-16 BL    |
| 212     | 156229     | Insert Lens Reflect               |
| --      | 5479J      | Plug Button Blk .359 Dia. Choke   |

**NOTE:** All component dimensions given in U.S. inches  
1 inch = 25.4 mm

# REPAIR PARTS

TRACTOR- -MODEL NO. 917.259050

## DRIVE





# REPAIR PARTS

## TRACTOR- -MODEL NO. 917.259050

### DRIVE

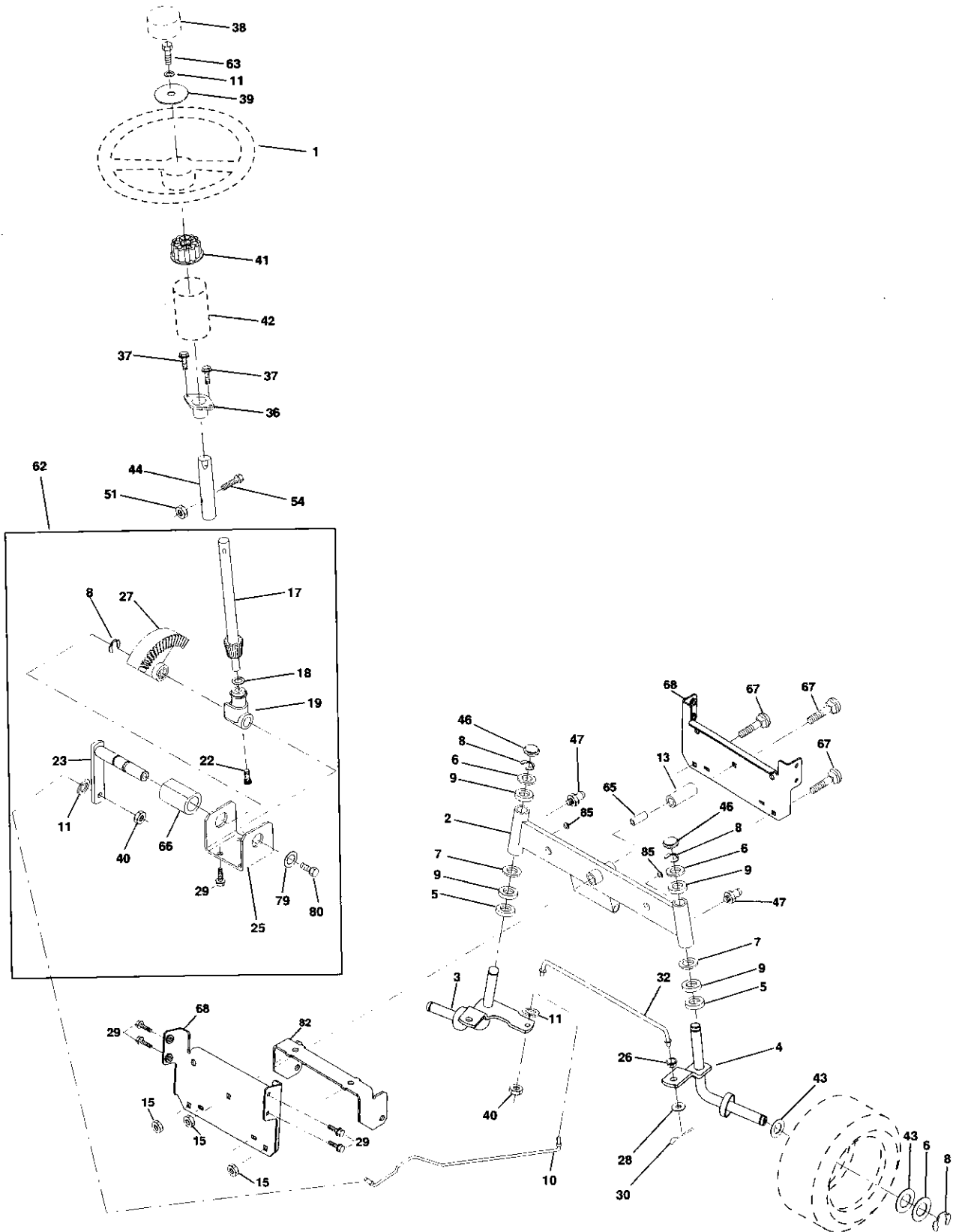
| KEY NO. | PART NO.  | DESCRIPTION                    | KEY NO. | PART NO.  | DESCRIPTION                       |
|---------|-----------|--------------------------------|---------|-----------|-----------------------------------|
| 1       | ----      | Transaxle (See Breakdown)      | 48      | 154407    | Bellcrank Clutch Grn Drv Stl      |
|         |           | Peerless 206-545C              | 49      | 123205X   | Retainer Belt Style Spring        |
| 2       | 146682    | Spring Return Brake T/a Zinc   | 50      | STD523715 | Bolt Hex Hd 3/8-16unc x 1-1/2     |
| 3       | 123666X   | Pulley Transaxle 18/20" tires  | 51      | STD541437 | Nut Crownlock 3/8-16 UNC          |
| 4       | 12000028  | Ring Retainer # 5100-62        | 52      | STD541431 | Nut Crown Lock 5/16-18            |
| 5       | 121520X   | Strap Torque 30 Degrees        | 53      | 105710X   | Link Clutch 7 66                  |
| 6       | 17060512  | Screw 5/16-18 x 3/4            | 55      | 105709X   | Spring Return Clutch 6 75         |
| 7       | 162240    | Bracket Saddle Shift T/a       | 56      | STD523712 | Bolt Fin Hex 3/8-16 unc x 1-1/4   |
| 8       | 131679    | Rod Shf Sdl LY/YT Str Blk Zinc | 57      | 130801    | V-Belt Gd Drive                   |
| 10      | STD561210 | Pin Cotter 1/8 x 1 Cad         | 59      | 169691    | Keeper Belt Centerspan            |
| 11      | 105701X   | Washer Plate Shf 388 Sq Hole   | 61      | 17060612  | Screw 3/8-16 x 3/4                |
| 12      | 19151216  | Washer 15/32 x 3/4 x 16ga      | 62      | 8883R     | Cover Pedal Blk Round             |
| 13      | 74550412  | Bolt 1/4-28unf Gr8 W/Patch     | 63      | 140186    | Pulley Eng Cl Mech 38deg LT/YT    |
| 14      | STD551125 | Washer Lock Hvy Helical 1/4    | 64      | 71170764  | Bolt Hex 7/16-20 x 4 Gr 5         |
| 18      | STD523710 | Bolt Fin Hex 3/8-16 x 1        | 65      | STD551143 | Washer Lock Hvy Hlcl Spr 7/16     |
| 19      | STD541437 | Nut Lock Hex W/Ins. 3/8-16 Unc | 66      | 154778    | Keeper Belt Engine                |
| 21      | 106933X   | Knob Rd 1/2-13 Plstc Thds Blk  | 70      | 134683    | Guide Belt Mower Drive RH         |
| 22      | 130804    | Rod Brake Blk Zinc 26 840      | 72      | 19132012  | Washer 13/32 x 1-1/4 x 12 Ga      |
| 24      | STD541237 | Nut Hex Jam 3/8-16 Unc         | 74      | 137057    | Spacer Axle                       |
| 25      | 106888X   | Spring Rod Brake 2 00 Zinc     | 75      | 121749X   | Washer 25/32 x 1 1/4 x 16 Ga      |
| 26      | STD551037 | Washer 13/32 x 13/16 x 16 Ga   | 76      | STD581075 | E-ring #5133-75                   |
| 27      | STD561210 | Pin Cotter 1/8 x 3/4 Cad       | 77      | 123583X   | Key Square 2 0 x 1845/ 1865       |
| 28      | 145204    | Rod Brake Parking Lt/Yt        | 78      | 121748X   | Washer 25/32 x 1-5/8 x 16ga       |
| 29      | 71673     | Cap Brake Parking              | 79      | 2228M     | Key Woodruff #9 3/16 x 3/4        |
| 30      | 130807    | Bracket Mtg Transaxle          | 96      | 4497H     | Retainer Spring                   |
| 32      | STD523107 | Bolt Hex Hd 5/16-18unc x 3/4   | 112     | 19091210  | Washer 9/32 x 3/4 x 10 Ga         |
| 34      | 155071    | Shaft Asm Pedal Foot           | 113     | 127285X   | Strap Torque                      |
| 35      | 120183X   | Bearing Nylon Blk 629 Id       | 116     | 72110610  | Bolt Rdhd Sq Neck 3/8-16 x 1.25   |
| 36      | STD551062 | Washer 21/32 x 1 x 16 Ga       | 145     | 74490540  | Bolt Hex FLGHD 5/16-18 Gr. 5      |
| 37      | STD571810 | Pin Roll 3/16 x 1"             | 150     | 165850    | Bushing Bellcrank Grd. Drive      |
| 38      | 131494    | Pulley Idler Flat              | 151     | 19133210  | Washer 13/32 x 2 x 10 Ga          |
| 39      | 74760644  | Bolt Fin Hex 3/8-16unc x 2-3/4 | 170     | 165849    | Keeper Belt Transaxle Gear        |
| 40      | 4470J     | Spacer Split 395 x 59 Bzp      | 202     | 72110612  | Bolt Carr Sh 3/8-16 x 1-1/2 Gr. 5 |
| 41      | 165838    | Keeper Belt Idler              | 204     | 17060516  | Screw 5/16-18 x 1                 |
| 42      | 19131312  | Washer 13/32 x 13/16 x 12 Ga   |         |           |                                   |
| 47      | 127783    | Pulley Idler V Groove Plastic  |         |           |                                   |

**NOTE:** All component dimensions given in U.S. inches  
1 inch = 25.4 mm

# REPAIR PARTS

TRACTOR- -MODEL NO. 917.259050

## STEERING ASSEMBLY



# REPAIR PARTS

TRACTOR- -MODEL NO. 917.259050

## STEERING ASSEMBLY

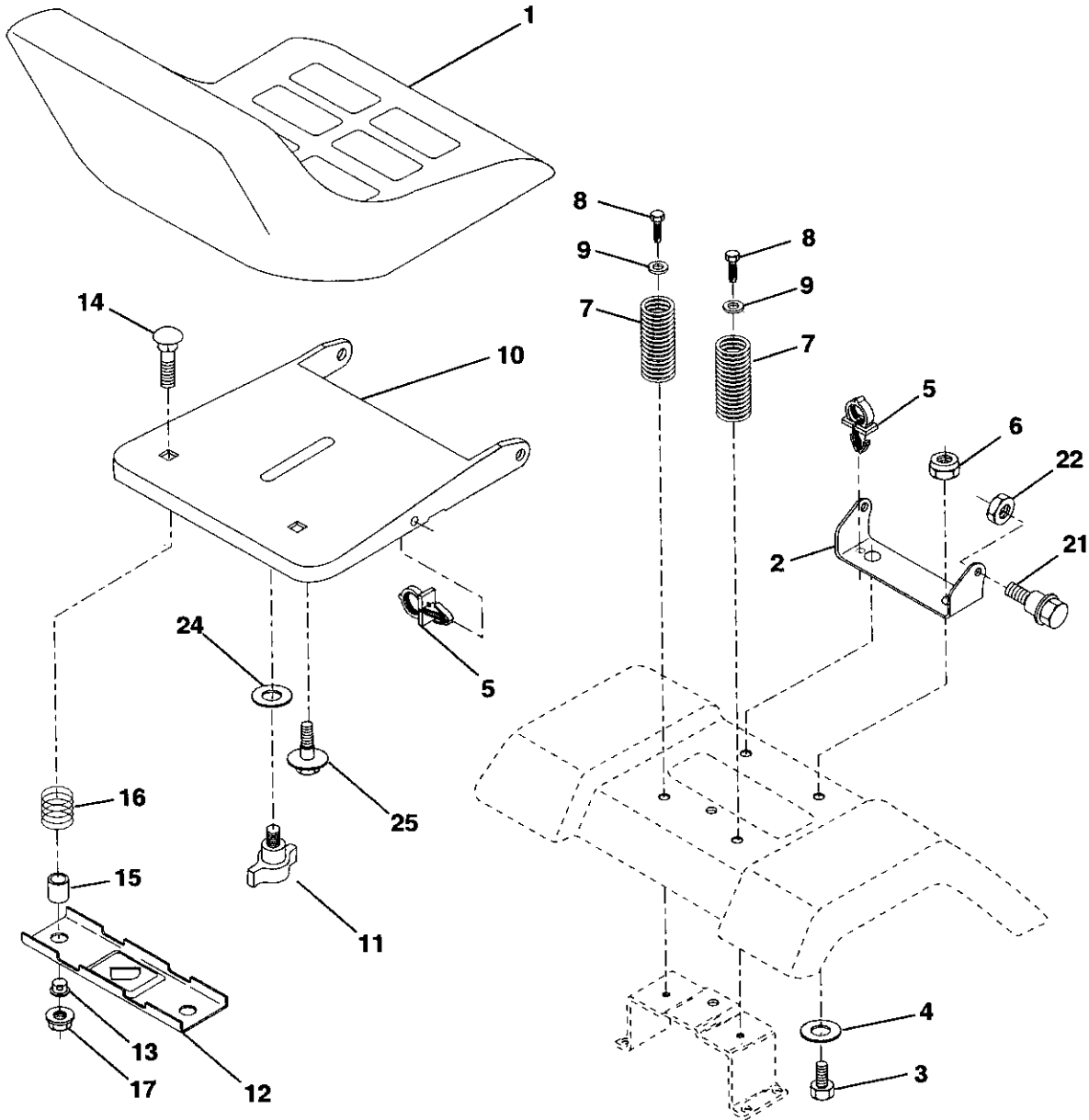
| KEY NO.           | PART NO.   | DESCRIPTION                      |
|-------------------|------------|----------------------------------|
| 1                 | 139768     | Wheel Steering Opp Sears Blk     |
| 2                 | 154427     | Axle Asm Front Lt                |
| 3                 | 156483     | Spindle Asm Lh                   |
| 4                 | 157473     | Spindle Asm Rh                   |
| 5                 | 6266H      | Washer Thrust .75 x 1.230        |
| 6                 | 121748X    | Washer 25/32 x 1-5/8 x 16 Ga.    |
| 7                 | 19272016   | Washer 27/32 x 1-1/4 x 16 Ga.    |
| 8                 | 12000029   | RingKlip#T5304-75                |
| 9                 | 3366R      | Bearing Col Strg Blk             |
| <u>5321-30468</u> | 169832     | Draglink                         |
| 11                | 10040600   | Washer Lock Hvy Hlcl Spr 3/8     |
| 13                | 136518     | Spacer Brg Axle Front            |
| 15                | 145212     | Nut Hexflange Lock               |
| 17                | 156546     | Shaft Asm Strg                   |
| 18                | 57079      | Washer Thrust .515 x .750 x .033 |
| 19                | 160395     | Support Shaft                    |
| 22                | 165857     | Screw Hex Wsh Hd Torx            |
| 23                | 165851     | Shaft Asm Pitman                 |
| 25                | 154406     | Bracket Steering                 |
| 26                | 126847X    | Bushing Link Drag Blk LR         |
| 27                | 136874     | Gear Sector 22 Teeth             |
| 28                | 19131416   | Washer 13/32 x 7/8 x 16 Ga.      |
| 29                | 17060612   | Screw 3/8-16 x 3/4               |
| 30                | STD561210  | Pin Cotter 1/8 x 3/4 Cad         |
| 32                | 130465     | Rod Tie Wire Form 19.75 Mech     |
| 36                | 155099     | Bushing Strg. 5/8 ID Dash        |
| 37                | 152927     | Screw                            |
| 38                | 139769     | Cap Wheel Steer Opp Sears USA    |
| 39                | 19133812   | Washer 13/32 x 2-3/8 x 12 Ga.    |
| 40                | 7810H      | Nut Lock Center 3/8-24           |
| 41                | 100711L    | Adaptor Wheel Strg.              |
| 42                | 145054X428 | Boot Steering Dash P/L MTL Blk   |
| 43                | 121749X    | Washer 25/32 x 1-1/4 x 16 Ga.    |
| 44                | 153720     | Extension Steering Non-adjust    |
| 46                | 121232X    | Cap Spindle Fr Top Blk           |
| 47                | 6855M      | Fitting Grease                   |
| 51                | 73800500   | Nut Lock Hx W/Ins 5/16-18unc     |
| 54                | 74780520   | Bolt Fin Hex 5/16-18unc          |
| 62                | 167902     | Steering Assembly                |
| 63                | 74780616   | Bolt Fin Hex 3/8-16unc x 1 Gr. 5 |
| 65                | 160367     | Spacer Axle                      |
| 66                | 154404     | Bearing Arm Pittman              |
| 67                | 72140618   | Bolt Rdhd 3/8-16 x 2-1/4         |
| 68                | 169827     | Brace Axle                       |
| 79                | 19132012   | Washer 13/32 x 1-1/4 x 12 Ga     |
| 80                | 74950612   | Bolt Hex Nylon 3/8-16 x 3/4      |
| 82                | 169835     | Bracket Susp Chasis Front        |
| 85                | 133835     | Fastner Christmas Tree           |

NOTE: All component dimensions given in U.S. inches  
1 inch = 25.4 mm

# REPAIR PARTS

## TRACTOR- -MODEL NO. 917.259050

### SEAT ASSEMBLY



| KEY NO. | PART NO.  | DESCRIPTION                    |
|---------|-----------|--------------------------------|
| 1       | 140122    | Seat                           |
| 2       | 140551    | Bracket Pvt St                 |
| 3       | 71110616  | Bolt Fin Hex 3/8-16unc X 1     |
| 4       | 19131610  | Washer Flat 13/32 X 1 X 10 Ga  |
| 5       | 145006    | Clip Push-In Hinged            |
| 6       | STD541437 | Locknut Hex W/Wsh 3/8-16       |
| 7       | 124181X   | Spring Seat Cprsn 2 250 Blk Zi |
| 8       | 17000616  | Screw 3/8-16 X 1-1/2           |
| 9       | 19131614  | Washer 13/32 X 1 X 14 Ga       |
| 10      | 155925    | Pan Seat                       |
| 11      | 166369    | Knob Seat Adj. Wingnut         |

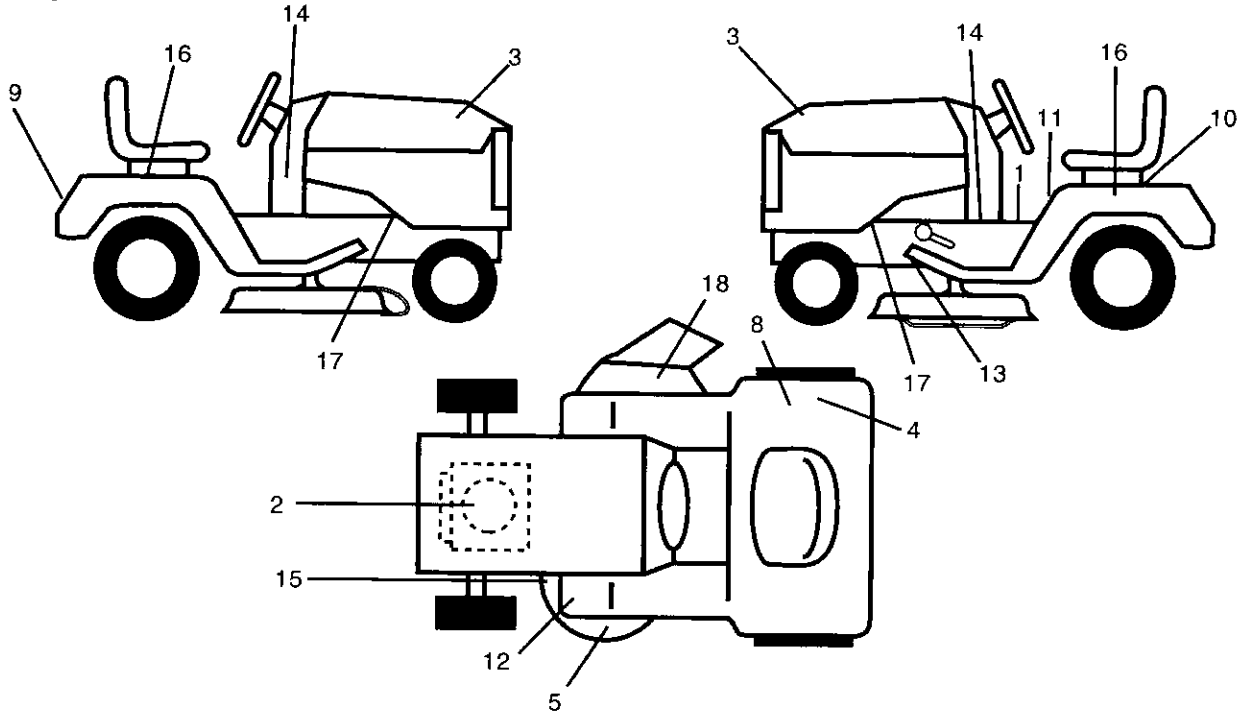
| KEY NO. | PART NO.  | DESCRIPTION                    |
|---------|-----------|--------------------------------|
| 12      | 121246X   | Bracket Mounting Switch        |
| 13      | 121248X   | Bushing Snap Blk Nyl 50 Id     |
| 14      | 72050412  | Bolt Rdhd Sht Nk 1/4-20x1-1/2  |
| 15      | 134300    | Spacer Split 28x 96 Yel Zinc   |
| 16      | 121250X   | Spring Cprsn 1 27 Blk Pnt      |
| 17      | 123976X   | Nut Lock 1/4 Lge Flg Gr 5 Zinc |
| 21      | 171852    | Bolt Shld 5/16-18 Unc-2A Blk D |
| 22      | STD541431 | Nut Lock Hex "W/Ins 5/16-18    |
| 24      | 19171912  | Washer 17/32 X 1-3/16 X 12 Ga  |
| 25      | 127018X   | Bolt Shoulder                  |

**NOTE:** All component dimensions given in U.S. inches  
1 inch = 25.4 mm

# REPAIR PARTS

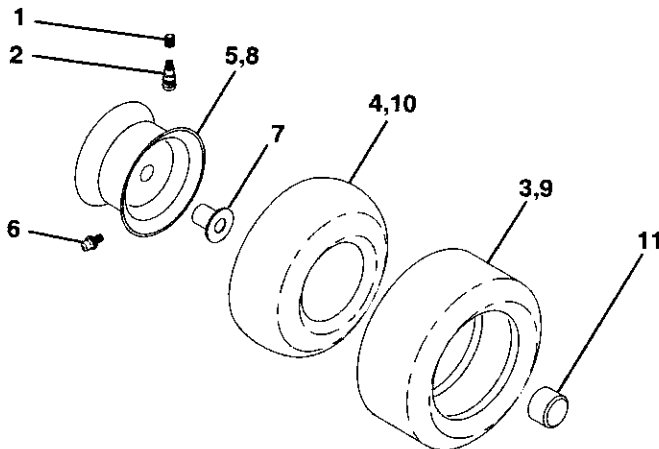
## TRACTOR- -MODEL NO. 917.259050

### DECALS



| KEY NO. | PART NO. | DESCRIPTION                  | KEY NO. | PART NO.   | DESCRIPTION                    |
|---------|----------|------------------------------|---------|------------|--------------------------------|
| 1       | 140837   | Decal Saddle Brake Parking   | 13      | 146046     | Decal V-Belt Dr Sch Tractor    |
| 2       | 165393   | Decal HP Engine              | 14      | 163249     | Decal Panel Dash 6sp 42"       |
| 3       | 171704   | Decal Hood Logo              | 15      | 160396     | Decal V-Belt Sch               |
| 4       | 126187X  | Decal 100 DBA                | 16      | 163207     | Decal Fender Sd 6/42           |
| 5       | 133179   | Decal Mower QC System        | 17      | 159736     | Decal Chassis Hot Muffler      |
| 8       | 145437   | Decal Europe Stand CE        | 18      | 145494     | Decal MowerCutfingr            |
| 9       | 163204   | Decal Fender Craftsman White | --      | 162598     | Decal Drawbar Load Limits      |
| 10      | 145005   | Decal Battery Dngr/Psn       | --      | 157199X428 | Pad Footrest                   |
| 11      | 145498   | Decal Read Owner's Manual    | --      | 138311     | Decal Handle Lft Height Adjust |
| 12      | 159737   | Decal Clutch/brake           | --      | 173675     | Manual Parts                   |
|         |          |                              | --      | 173673     | Manual Operator's Euro         |
|         |          |                              | --      | 173674     | Manual Operator's Scand        |

### WHEELS & TIRES



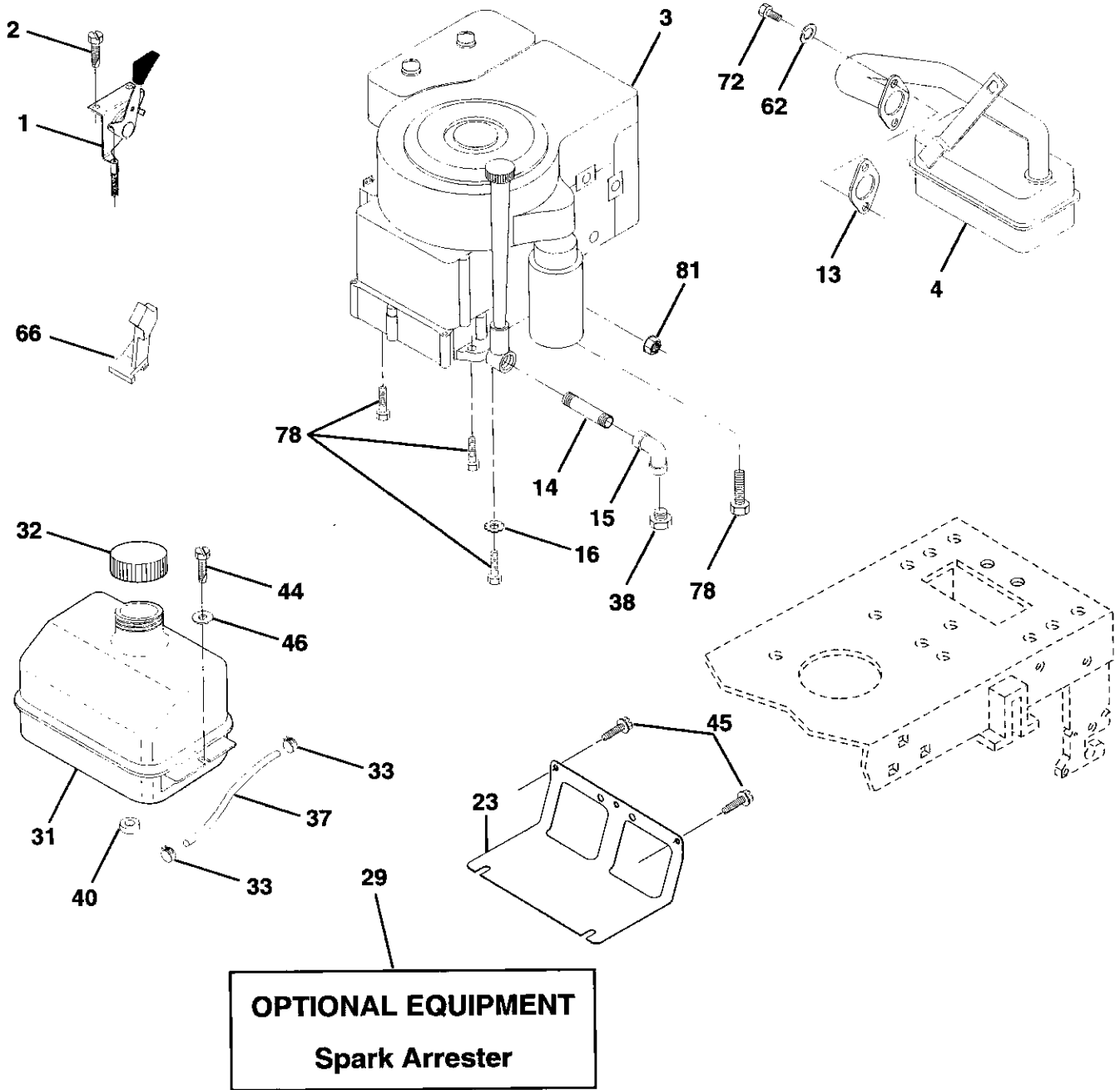
| KEY NO. | PART NO.   | DESCRIPTION                    |
|---------|------------|--------------------------------|
| 1       | 59192      | Cap Value Tire                 |
| 2       | 65139      | Stem Value                     |
| 3       | 106222X    | Tire F Ts 15 X 6 0 - 6 Service |
| 4       | 59904      | Tube Inner Front #35060        |
| 5       | 106732X427 | Rim Asm 6"front White Service  |
| 6       | 278H       | Fitting Grease                 |
| 7       | 9040H      | Bearing Flange                 |
| 8       | 106108X427 | Rim Asm 8"rear White Service   |
| 9       | 106268X    | Tire R Ts 18x9 5-8 Service     |
| 10      | 7152J      | Tube Rear 9 5 X 8 Service      |
| 11      | 104757X    | Cap Axle Blk 1 50 X 1 00       |
| --      | 144334     | Sealant, Tire (10 oz. tube)    |

**NOTE:** All component dimensions given in U.S. inches  
1 inch = 25.4 mm

# REPAIR PARTS

TRACTOR- -MODEL NO. 917.259050

## ENGINE



# REPAIR PARTS

## TRACTOR- -MODEL NO. 917.259050

### ENGINE

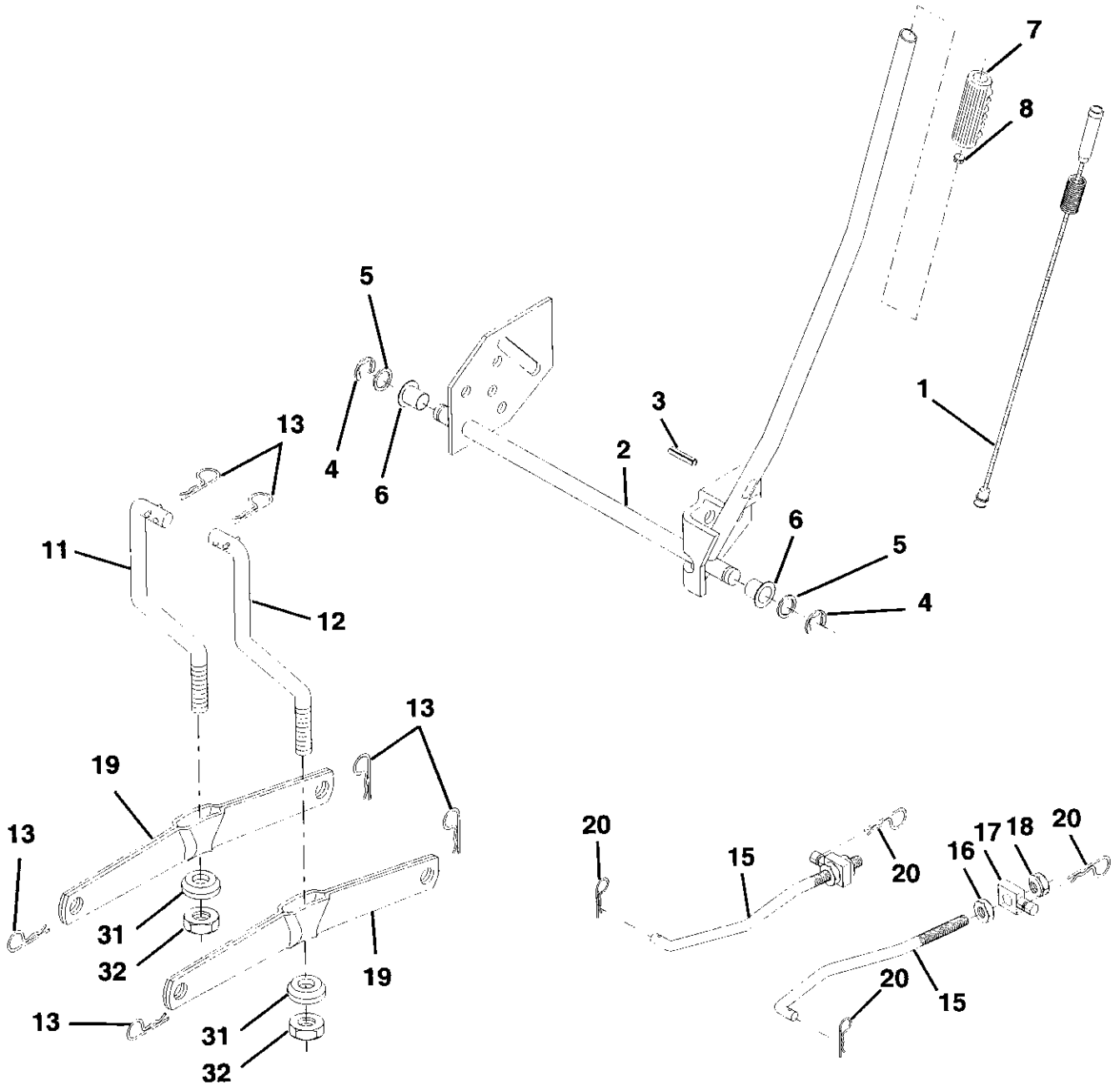
| KEY NO. | PART NO.  | DESCRIPTION   |
|---------|-----------|---|
| 1       | 162158    | Control Th/ch LH IV 1 80 20 22                            |
| 2       | 17720410  | Screw Hex Thd Cut 1/4-20x5/8 T                            |
| 3       | -----     | Engine (See Breakdown)<br>Briggs, Model No 287707-1255-E3 |
| 4       | 137352    | Muffler Exh LT B&S 14HP IC OHV                            |
| 13      | 165291    | Gasket Eng 1 313 Id Tin Plated                            |
| 14      | 13280324  | Nipple Pipe 3/8 Npt x 3"                                  |
| 15      | 13200300  | Elbow Std 90 Degree 3/8-18 Npt                            |
| 16      | STD551237 | Washer Lock Ext Tooth 3/8                                 |
| 23      | 169837    | Shield Browning/Debris Guard                              |
| 29      | 137180    | Kit Spark Arrestor (Flat Scrm)                            |
| 31      | 109202X   | Tank Fuel Front 1 25                                      |
| 32      | 158990    | Cap Asm Fuel Sears Vented                                 |
| 33      | 123487X   | Clamp Hose Blk  |
| 37      | 137040    | Line Fuel 20"   |
| 38      | -----     | Plug Oil Drain<br>(See Engine Breakdown)                  |
| 40      | 124028X   | Bushing Snap Nyl Blk Fuel Line                            |
| 44      | 17670412  | Screw Hexwsh Thdrol 1/4-20 x 3/4                          |
| 45      | 17000612  | Screw Hexwsh Thdr 3/8-16 x 3/4                            |
| 46      | 19091416  | Washer 9/32 x 7/8 x 16 ga                                 |
| 62      | STD551131 | Washer Lock Hvy Hlcl Spr 5/16                             |
| 66      | 127951    | Stop Throttle 3000 RPM                                    |
| 72      | 71070512  | Screw Hex Hd Cap 5/16-18 X 3/4                            |
| 78      | 17060620  | Screw 3/8-16 x 1-1/4                                      |
| 81      | 73510400  | Nut Keps Hex 1/4-20 Unc                                   |

**NOTE:** All component dimensions given in U.S. inches  
1 inch = 25.4 mm

# REPAIR PARTS

TRACTOR- -MODEL NO. 917.259050

## MOWER LIFT





# REPAIR PARTS

## TRACTOR- -MODEL NO. 917.259050

### MOWER LIFT

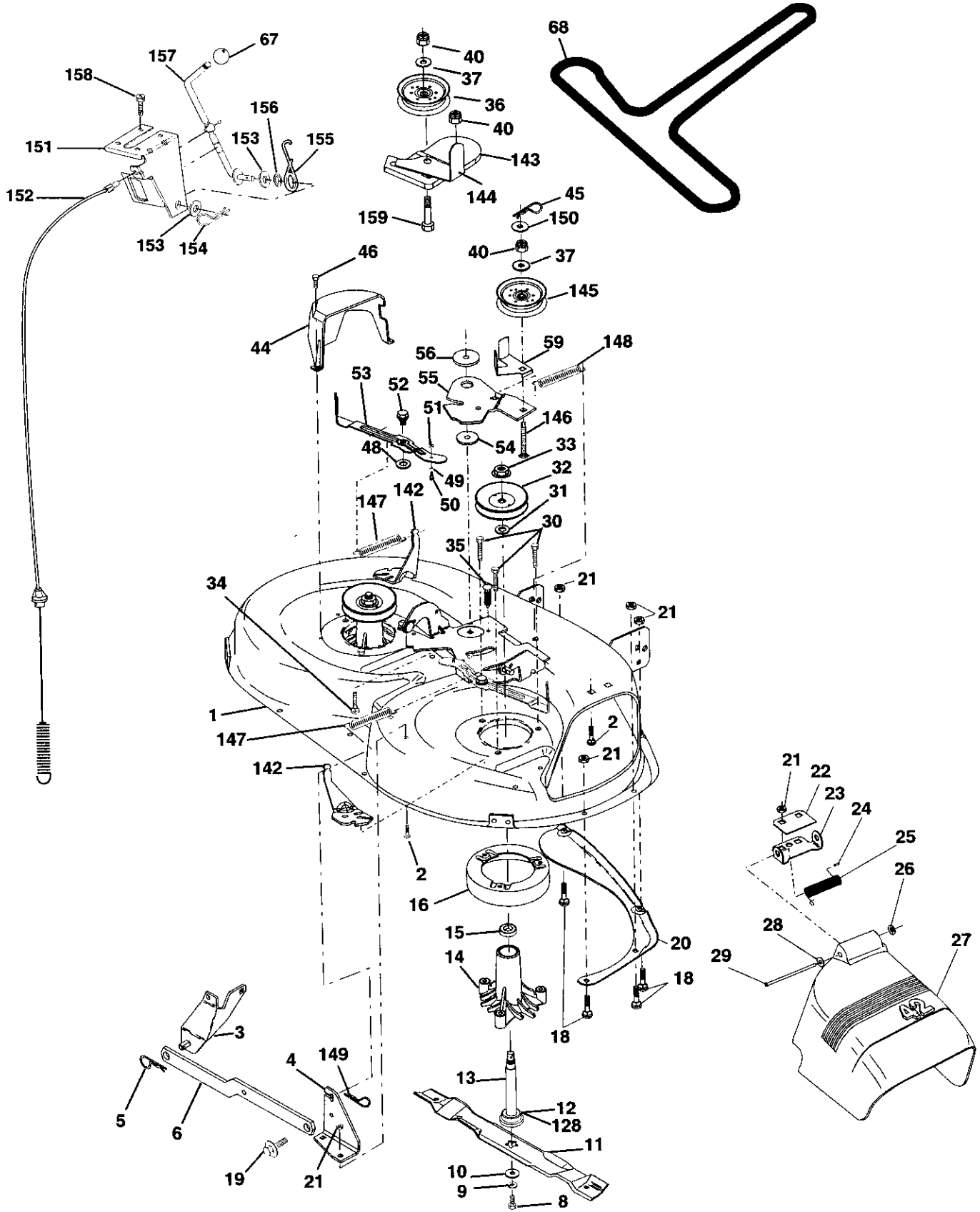
| KEY NO. | PART NO.  | DESCRIPTION                      |
|---------|-----------|----------------------------------|
| 1       | 159460    | Wire Asm Inner/Sprg W/plunger LT |
| 2       | 159471    | Shaft Asm Lift                   |
| 3       | 105767X   | Pin Groove 1 500 Zinc            |
| 4       | 12000002  | E Ring #5133-62                  |
| 5       | 19211621  | Washer Pltd 21/32 X 1 X 21ga     |
| 6       | 120183X   | Bearing Nylon Blk 629 Id         |
| 7       | 125631X   | Grip Handle                      |
| 8       | 122365X   | Button Plunger                   |
| 11      | 139865    | Link Lift LH                     |
| 12      | 139866    | Link Lift RH                     |
| 13      | STD624008 | Retainer Spring                  |
| 15      | 173288    | Link Front                       |
| 16      | 73350800  | Nut Jam Hex 1/2-13 Unc           |
| 17      | 130171    | Trunnion Blk Zinc                |
| 18      | 73800800  | Nut Lock W/Wsh 1/2-13unc         |
| 19      | 139868    | Arm Suspension Rear              |
| 20      | 163552    | Retainer Spring Zinc             |
| 31      | 140302    | Bearing Pvt Lift Spherical       |
| 32      | 73540600  | Nut Crownlock 3/8-24             |

**NOTE:** All component dimensions given in U.S. inches  
1 inch = 25.4 mm

# REPAIR PARTS

TRACTOR- -MODEL NO. 917.259050

MOWER



# REPAIR PARTS

## TRACTOR- -MODEL NO. 917.259050

### MOWER

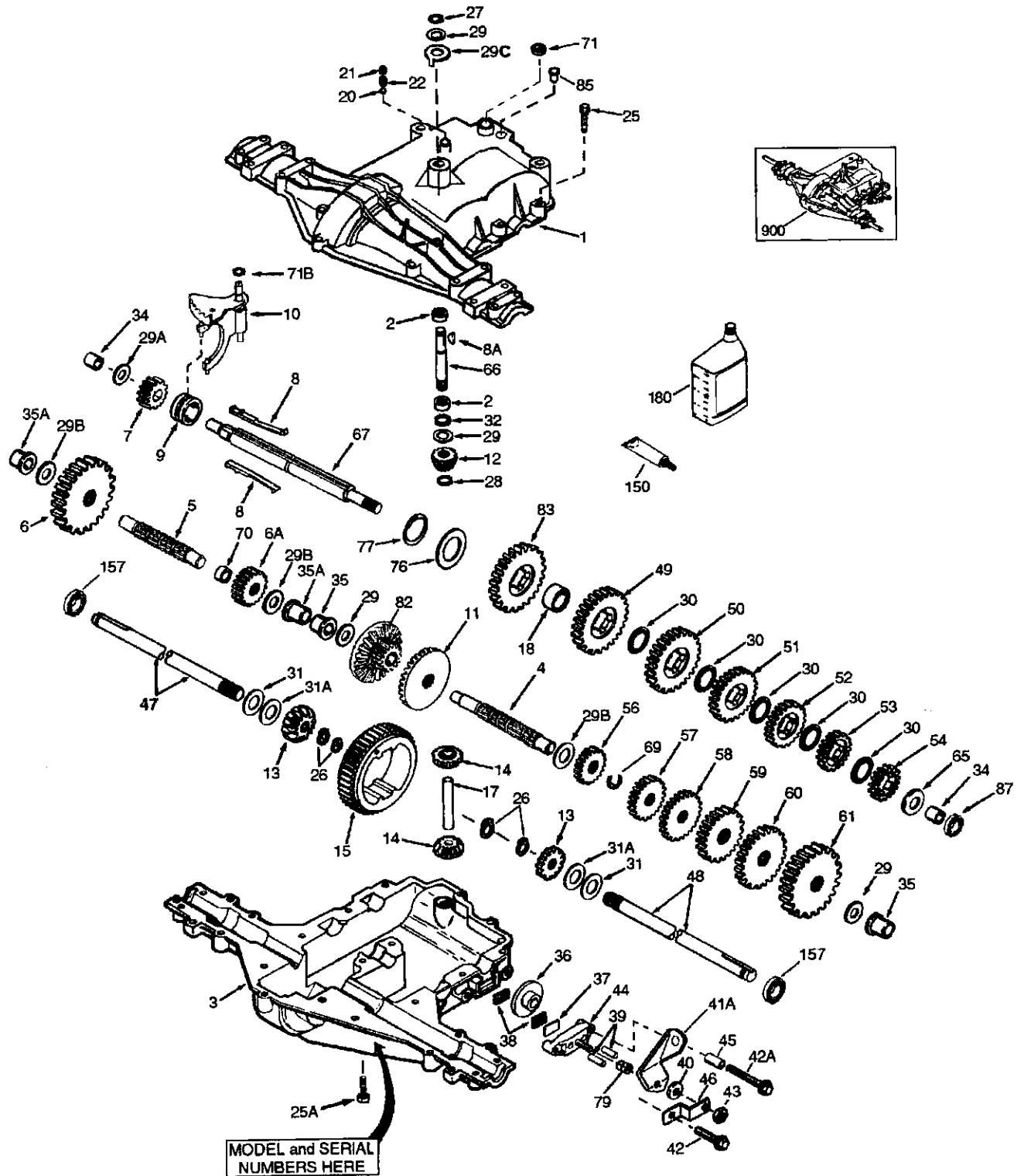
| KEY NO. | PART NO.   | DESCRIPTION   | KEY NO. | PART NO.  | DESCRIPTION  |
|---------|------------|---|---------|-----------|--|
| 1       | 165892     | Mower Deck Assembly, 42"                                    | 48      | 133944    | Washer, Hardened   |
| 2       | STD533107  | Bolt  | 49      | 155066    | Roller Assembly, Cam Follower  |
| 3       | 138017     | Bracket Assembly, Sway Bar, Front                           | 50      | 131340    | Bolt, Shoulder #10-24 Grade 5  |
| 4       | 165460     | Bracket Sway Bar 38/42" Deck                                | 51      | STD541410 | Locknut  |
| 5       | STD624008  | Retainer Spring   | 52      | 139888    | Bolt, Shoulder 5/16-18 UNC   |
| 6       | 130832     | Arm, Suspension, Rear                                       | 53      | 131845    | Arm Assembly, Pad, Brake   |
| 8       | 850857     | Bolt, Hex 3/8-24 x 1.25 Gr. 8                               | 54      | 133943    | Washer, Hardened   |
| 9       | STD551137  | Washer, Lock  | 55      | 155046    | Arm, Idler   |
| 10      | 140296     | Washer, Hardened  | 56      | 165723    | Spacer, Retainer   |
| 11      | 134149     | Blade, Mulching   | 59      | 141043    | Guard, TUV Idler   |
| 12      | 129895     | Bearing, Ball   | 67      | 149846    | Knob Custom Oval   |
| 13      | 137645     | Shaft Assembly, Mandrel, Vented<br>(Includes Key Number 12) | 68      | 144959    | V-Belt   |
| 14      | 128774     | Housing, Mandrel, Vented                                    | 128     | 153390    | Washer Felt  |
| 15      | 110485X    | Bearing, Ball, Mandrel                                      | 142     | 165890    | Arm Spring Brake Mower   |
| 16      | 140329     | Stripper, Vented Mower Deck                                 | 143     | 157109    | Bracket Arm Idler 42"  |
| 18      | 72140505   | Bolt, Carriage 5/16-18 x 5/8                                | 144     | 158634    | Keeper Belt 42" Clutch Cable   |
| 19      | 132827     | Bolt, Shoulder  | 145     | 165888    | Pulley Idler Flat  |
| 20      | 159770     | Baffle, Vortex  | 146     | 165891    | Bolt Carriage Idler  |
| 21      | STD541431  | Nut Crownlock 5/16-18 UNC                                   | 147     | 131335    | Spring Extension   |
| 22      | 134753     | Stiffener Bracket   | 148     | 169022    | Spring Return Idler  |
| 23      | 131267     | Bracket, Deflector  | 149     | 165898    | Retainer Spring Yellow Zinc  |
| 24      | 105304X    | Cap, Sleeve   | 150     | 19091216  | Washer 9/32 x 3/4 x 16 Ga.   |
| 25      | 123713X    | Spring, Torsion, Deflector                                  | 151     | 169670    | Bracket Clutch   |
| 26      | 110452X    | Nut, Push   | 152     | 169676    | Cable Clutch 42 In   |
| 27      | 130968X428 | Shield, Deflector   | 153     | 169674    | Washer Flat 3/8" Type B  |
| 28      | 19111016   | Washer 11/32 x 5/8 x 16 Ga.                                 | 154     | 169675    | Spring Retainer  |
| 29      | 131491     | Rod, Hinge  | 155     | 169671    | Spring Retention Lever   |
| 30      | 157722     | Screw Thdrol Washer Head                                    | 156     | 169672    | Spacer   |
| 31      | 129963     | Washer, Spacer  | 157     | 169669    | Rod Clutch   |
| 32      | 153535     | Pulley, Mandrel   | 158     | 17720410  | Screw Hex Thd Cut 1/4-20 x 5/8   |
| 33      | 137266     | Nut, Toplock, Flanged                                       | 159     | 72140614  | Bolt Rdhd Sqd 3/8-16unc x 1-3/4  |
| 34      | STD533717  | Bolt  | --      | 130794    | Mandrel Assembly (Includes Key<br>Numbers 8-10, 12-15, 31 and 32)  |
| 35      | 133835     | Fastner, Christmas Tree                                     | --      | 169583    | Mower Deck, Complete (Standard<br>Deck, Order Separately Mulcher<br>Plate and Gauge Wheel Components,<br>Key Nos. 101-106 and 111-121) |
| 36      | 131494     | Pulley, Idler, Flat   |         |           |  |
| 37      | STD551037  | Washer 13/32 x 13/16 x 16 Gauge                             |         |           |  |
| 40      | STD541437  | Nut Crownlock 3/8-16 UNC                                    |         |           |  |
| 44      | 140088     | Guard, Mandrel, L.H.  |         |           |  |
| 45      | STD624003  | Retainer  |         |           |  |
| 46      | 137729     | Screw, Thd. Roll 1/4-20 x 5/8                               |         |           |  |

**NOTE:** All component dimensions given in U.S. inches  
1 inch = 25.4 mm

# REPAIR PARTS

TRACTOR - - MODEL NUMBER 917.259050

PEERLESS TRANSAXLE - MODEL NUMBER 206-545C



# REPAIR PARTS

## TRACTOR - - MODEL NUMBER 917.259050

### PEERLESS TRANSAXLE - MODEL NUMBER 206-545C

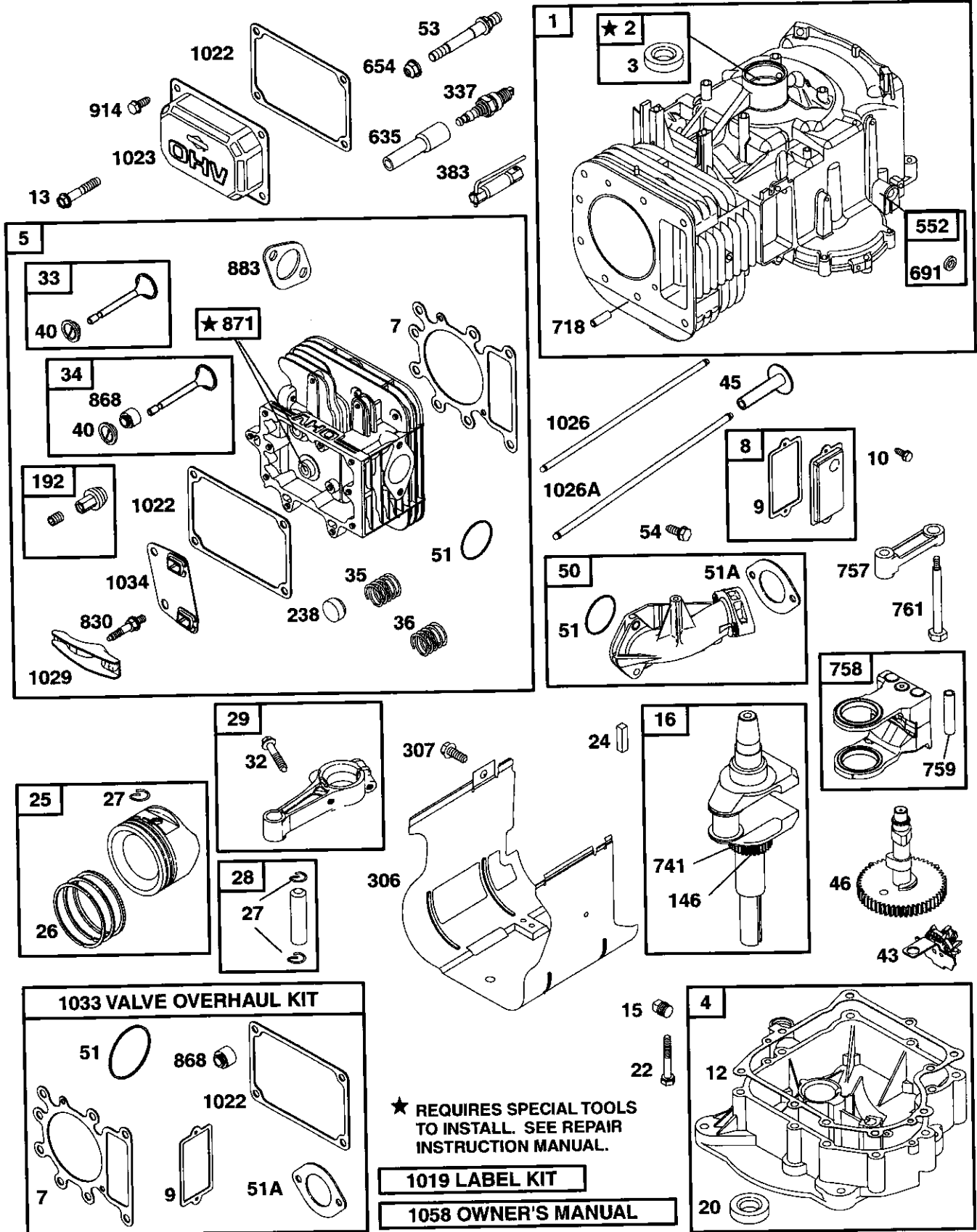
| KEY NO. | PART NO. | DESCRIPTION                                 | KEY NO. | PART NO. | DESCRIPTION                          |
|---------|----------|---|---------|----------|--------------------------------------|
| 1       | 772147   | Transaxle Cover                             | 41A     | 790079   | Brake Lever                          |
| 2       | 780086A  | Needle Bearing 5/8"                         | 42      | 792073A  | Screw 1/4 - 20 x 1-1/4"              |
| 3       | 770128   | Transaxle Case                              | 42A     | 792085A  | Screw 1/4 - 20 x 2 1/4"              |
| 4       | 776395   | Countershaft                                | 43      | 792075   | Locknut 5 / 16 - 24                  |
| 5       | 776409   | Output Shaft                                | 44      | 790025   | Brake Pad Holder                     |
| 6       | 778364   | Spur Gear (38 teeth)                        | 45      | 786066   | Spacer .2625 x 1.0                   |
| 6A      | 778369   | Spur Gear (15 teeth)                        | 46      | 786086   | Brake Lever Bracket                  |
| 7       | 778330   | Spur Gear (11 teeth)                        | 47      | 774690   | Axle (11-15 / 16" Long)              |
| 8       | 792180   | Shift Key                                   | 48      | 774691   | Axle (16 - 1 / 2" long)              |
| 8A      | 792047   | Woodruff Key #9                             | 49      | 778356   | Spur Gear (29 teeth)                 |
| 9       | 784352   | Shift Collar                                | 50      | 778338   | Spur Gear (27 teeth)                 |
| 10      | 784378   | Shift Rod & Fork                            | 51      | 778354   | Spur Gear (23 teeth)                 |
| 11      | 778334   | Bevel Gear (30 teeth)                       | 52      | 778352   | Spur Gear (19 teeth)                 |
| 12      | 778309   | Input Bevel Pinion (13 teeth)               | 53      | 778350   | Spur Gear (16 teeth)                 |
| 13      | 778368   | Bevel Gear (13 teeth) (Include. 14)         | 54      | 778346   | Spur Gear (15 teeth)                 |
| 14      | 778368   | Bevel Pinion (13 teeth) (Include. 13)       | 56      | 778355   | Spur Gear (11 teeth)                 |
| 15      | 778370   | Ring Gear (43 teeth)                        | 57      | 778337   | Spur Gear (13 teeth)                 |
| 17      | 786188   | Drive Pin                                   | 58      | 778353   | Spur Gear (17 teeth)                 |
| 18      | 786102   | Spacer 1.130 X .695                         | 59      | 778351   | Spur Gear (21 teeth)                 |
| 20      | 792077A  | Ball 5/16" dia                              | 60      | 778349   | Spur Gear (24 teeth)                 |
| 21      | 792078   | Set Screw 3/8 - 16 x 3/8"                   | 61      | 778345   | Spur Gear (25 teeth)                 |
| 22      | 792079   | Spring .310 OD x .625 L                     | 65      | 780189   | Flat Washer .563 ID x .062W          |
| 25      | 792073A  | Screw 1/4 - 20 x 1-1/4"                     | 66      | 776422   | Input Shaft                          |
| 25A     | 792177   | Screw 1/4-20 x 1-3/8"                       | 67      | 776396   | Shifter & Brake Shaft                |
| 26      | 792125   | Retaining Ring (pkg of 2)                   | 69      | 792170   | Retaining Ring                       |
| 27      | 792035   | Retaining Ring                              | 70      | 786187   | Spacer .890                          |
| 28      | 788040   | Retaining Ring                              | 71      | 788069   | Square Cut Ring                      |
| 29      | 780072   | Thrust Washer .627 ID x .031W               | 71B     | 788092   | "O" Ring                             |
| 29A     | 780160   | Thrust Washer .762 ID x .031W               | 76      | 780090   | Flat Washer 1.128 ID x .058W         |
| 29B     | 780051   | Thrust Washer .762 ID x .031W               | 77      | 788078A  | Inverted Retaining Ring              |
| 29C     | 780199   | Anti-Rotation Washer .632                   | 79      | 792144   | Spring .430 OD x .5000 L             |
| 30      | 780108   | Cup Washer 1.127 ID x .032W                 | 82      | 778333   | Bevel & Spur Gear (30 & 13 teeth)    |
| 31      | 780001   | Flat Washer .750 ID x .056W (Use As Needed) | 83      | 778338   | Spur Gear (27 teeth)                 |
| 31A     | 780195   | Flat Washer .750 ID x .062W                 | 85      | 792154   | Oil Fill Plug                        |
| 32      | 788083   | Oil Seal 5/8"                               | 87      | 788089A  | Oil Seal 9 / 16"                     |
| 34      | 780194   | Bushing .563                                | 150     | 788093A  | Liquid Gasket RTV Silicone           |
| 35      | 780193   | Flanged Bushing 5 / 8" ID                   | 157     | 788088A  | Oil Seal 3 / 4"                      |
| 35A     | 780197   | Flanged Bushing .751                        | 180     | 730229A  | Gear Oil 80W90                       |
| 36      | 790075   | Brake Disk                                  | 900     | 794712   | Replacement MST - 206-545C Transaxle |
| 37      | 790007   | Brake Pad Plate                             |         |          |                                      |
| 38      | 799021   | Brake Pad (pkg of 2)                        |         |          |                                      |
| 39      | 786026   | Dowel Pin                                   |         |          |                                      |
| 40      | 792076A  | Flat Washer .312 ID x .059W                 |         |          |                                      |

**NOTE:** All component dimensions given in U.S. inches  
1 inch = 25.4 mm

# REPAIR PARTS

TRACTOR - - MODEL NUMBER 917.259050

BRIGGS - MODEL NUMBER 287707, TYPE NUMBER 1255-E3



★ REQUIRES SPECIAL TOOLS TO INSTALL. SEE REPAIR INSTRUCTION MANUAL.

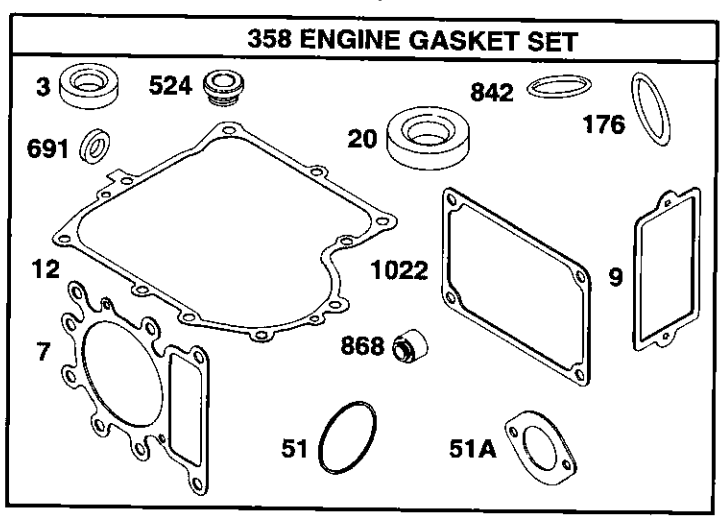
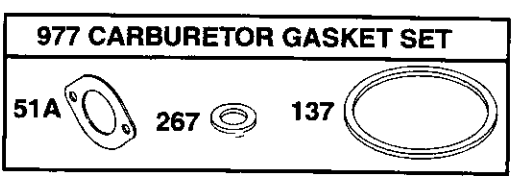
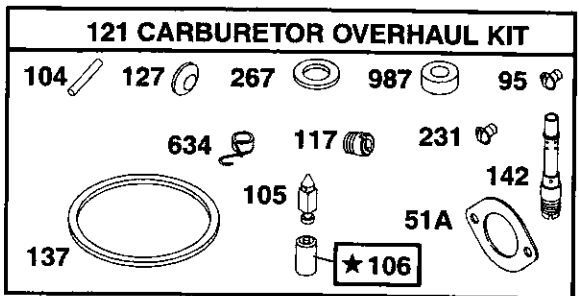
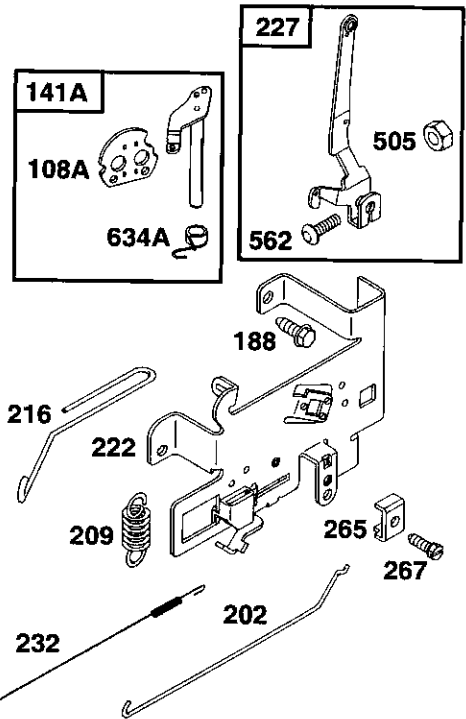
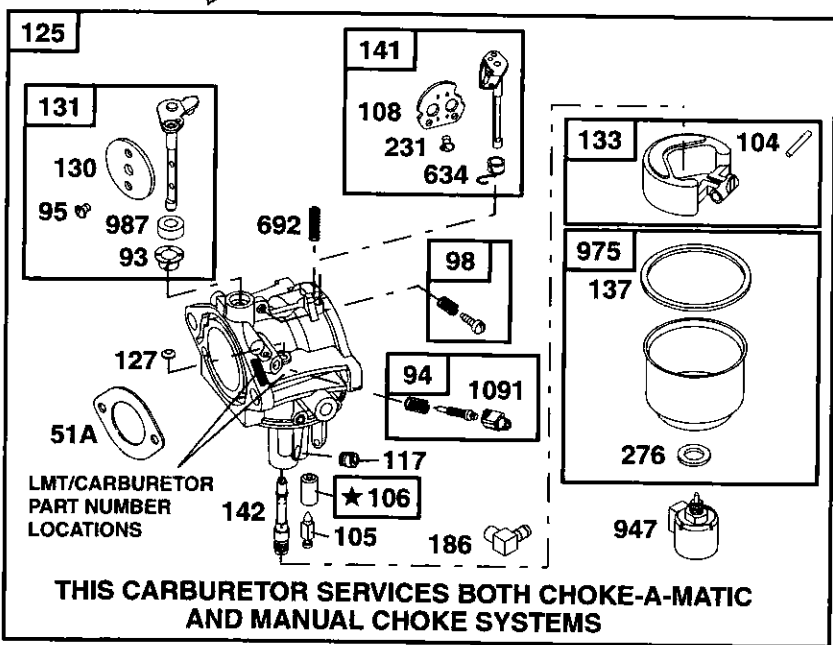
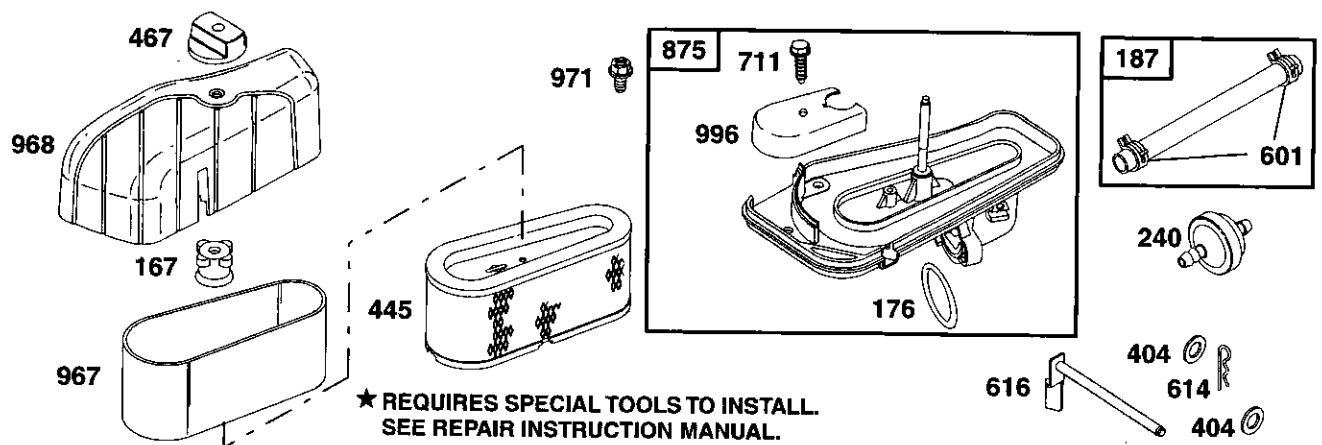
1019 LABEL KIT

1058 OWNER'S MANUAL

# REPAIR PARTS

TRACTOR - - MODEL NUMBER 917.259050

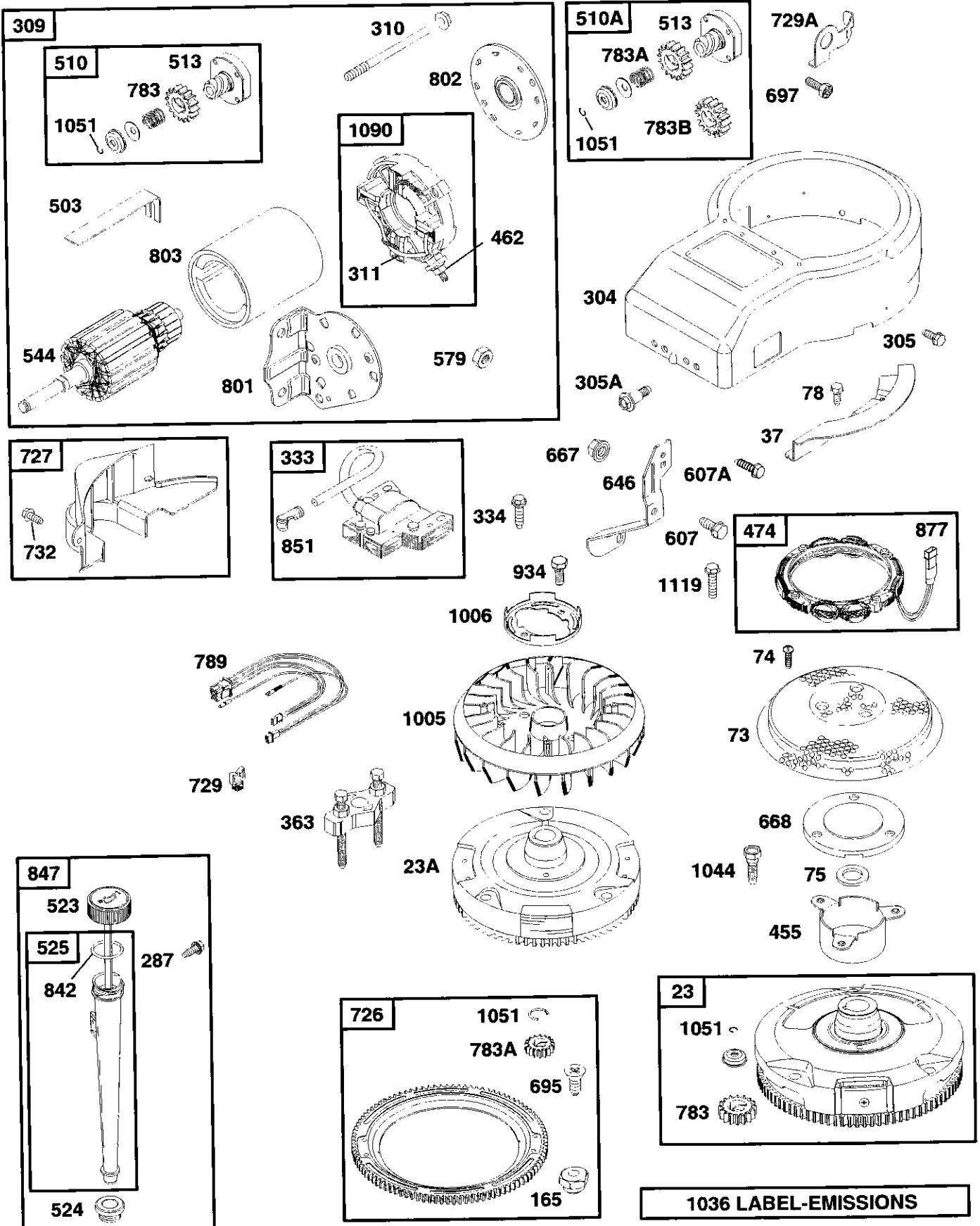
BRIGGS - MODEL NUMBER 287707, TYPE NUMBER 1255-E3



# REPAIR PARTS

TRACTOR - - MODEL NUMBER 917.259050

BRIGGS - MODEL NUMBER 287707, TYPE NUMBER 1255-E3





# REPAIR PARTS

## TRACTOR - - MODEL NUMBER 917.259050

### BRIGGS - MODEL NUMBER 287707, TYPE NUMBER 1255-E3

| KEY PART NO. | NO.    | DESCRIPTION                            | KEY PART NO. | NO.     | DESCRIPTION                        |
|--------------|--------|--|--------------|---------|------------------------------------|
| 1            | 496412 | Cylinder Assembly                      | 98           | 495800  | Kit-Idle Speed                     |
| 2            | 399265 | Bushing/Seal Kit                       | 104          | 231789  | ● Pin-Float Hinge                  |
| 3            | 391086 | ★ Seal-Oil                             | 105          | 231855  | ● Valve-Float Needle               |
| 4            | 494238 | Sump-Engine                            | 106          | 231854  | ● Seat-Inlet                       |
| 5            | 691165 | Head-Cylinder                          | 108          | 224558  | Valve-Choke (Manual Choke)         |
| 7            | 273280 | ★+ Gasket-Cylinder Head                | 108          | A224540 | Valve-Choke (Choke-A-Matic)        |
| 8            | 495735 | Breather Assembly                      | 117          | 232118  | ● Jet, Main (Standard)             |
| 9K           | 27803  | Gasket-Breather                        |              | 232119  | Jet, Main (High Altitude)          |
| 10           | 94621  | Screw (Breather Assembly)              | 121          | 690191  | Carburetor Overhaul Kit            |
| 11           | 281246 | Tube-Breather                          | 125          | 690194  | Carburetor                         |
| 12           | 271916 | ★ Gasket-Crankcase (.015" Thick, Std.) | 127          | — — —   | ● Plug-Welch (Sold in Kit Only)    |
|              | 271997 | ★ Gasket-Crankcase (.005" Thick)       | 130          | 224539  | Valve-Throttle                     |
|              | 271996 | ★ Gasket-Crankcase (.009" Thick)       | 131          | 494379  | Throttle Shaft Kit                 |
| 13           | 94728  | Screw (Cylinder Head, 3-9/16")         | 133          | 494381  | Float-Carburetor                   |
| 15           | 94239  | Plug-Oil Drain                         | 137          | 281165  | ◆ Gasket-Float Bowl                |
| 16           | 690136 | Crankshaft                             | 141          | 495097  | Choke Shaft Kit (Man. Choke)       |
| 20           | 291675 | ★ Seal-Oil                             | 141A         | 495931  | Choke Shaft Kit (Choke-A-Matic)    |
| 22           | 95187  | Screw (Crankcase Cover)                | 142          | 232117  | ● Nozzle-Carburetor                |
| 23           | 693557 | Flywheel (Steel Ring Gear)             | 146          | 94196   | Key-Timing                         |
| 23A          | 492326 | Flywheel (Plastic Ring Gear)           | 165          | 693148  | Nut (Ring Gear)                    |
| 24           | 222698 | Key-Flywheel                           | 171          | 281051  | Nut (Air Cleaner)                  |
| 25           | 499284 | Piston Assembly (Std.)                 | 176          | 281106  | ★ Gasket, Air Cleaner              |
|              | 499288 | Piston Assembly (.010" O.S.)           | 177          | 270920  | ★ Seal-O-Ring                      |
|              | 49929  | Piston Assembly (.020" O.S.)           | 186          | 493496  | Connector-Hose                     |
|              | 499296 | Piston Assembly (.030" O.S.)           | 187          | 492790  | Line-Fuel (Cut to Required Length) |
| 26           | 495854 | Ring Set, Piston (Std.)                | 188          | 94929   | Screw (Control Bracket)            |
|              | 495852 | Ring Set, Piston (.010" O.S.)          | 192          | 492160  | Adjuster, Rocker Arm               |
|              | 495851 | Ring Set, Piston (.020" O.S.)          | 209          | 260695  | Spring, Governor                   |
|              | 495855 | Ring Set, Piston (.030" O.S.)          | 216          | 262766  | Link-Choke                         |
| 27           | 263129 | Lock-Piston Pin                        | 216A         | 262767  | Link-Choke                         |
| 28           | 498319 | Pin Assembly, Piston (Std.)            | 222          | 495611  | Bracket, Control                   |
|              | 498320 | Pin Assembly-Piston (.005" O.S.)       | 227          | 493935  | Lever-Governor                     |
| 29           | 692419 | Rod-Connecting (Std.)                  | 231          | 94098   | ● Screw (Choke)                    |
|              | 499940 | Rod-Connecting (.020 U.S.)             | 232          | 262785  | Spring-Link                        |
| 32           | 692852 | Screw (Connecting Rod)                 | 238          | 262836  | Cap, Valve                         |
| 33           | 495856 | Valve-Exhaust                          | 240          | 394358  | Filter-Fuel                        |
| 34           | 495857 | Valve, Intake                          | 265          | 221535  | Clamp-Casing                       |
| 35           | 262811 | Spring, Valve                          | 267          | 94906   | Screw (Casing Clamp)               |
| 37           | 224502 | Guard-Flywheel                         | 276          | 281164  | ◆ Sealing Washer                   |
| 40           | 224641 | Retainer, Valve                        | 287          | 94903   | Screw (Dipstick Tube)              |
| 43           | 490815 | Governor-Oil Slinger                   | 294          | 810104  | Adjuster-Rocker Arm                |
| 45           | 262411 | Tappet, Valve                          | 304          | 496281  | Housing-Blower (Black Inner)       |
| 46           | 496884 | Camshaft                               | 305          | 94863   | Screw (Inner Blower Housing)       |
| 48           | 496050 | ShortBlock                             | 306          | 225020  | Shield, Cylinder                   |
| 50           | 690193 | Manifold, Intake                       | 307          | 94930   | Screw (Cylinder Shield)            |
| 51           | 693138 | ★+ Gasket-Intake                       |              |         |                                    |
| 51A          | 273650 | Gasket-Intake                          |              |         |                                    |
| 53           | 690227 | Stud (Carburetor)                      |              |         |                                    |
| 54           | 95160  | Screw (Intake Manifold)                |              |         |                                    |
| 73           | 224948 | Screen, Rotating                       |              |         |                                    |
| 74           | 94626  | Screw (Rotating Screen)                |              |         |                                    |
| 75           | 225136 | Washer (Flywheel)                      |              |         |                                    |
| 78           | 94896  | Screw (Flywheel Guard)                 |              |         |                                    |
| 87           | 491323 | ★ Seal-Governor Shaft                  |              |         |                                    |
| 93           | 281346 | Bushing-Throttle Shaft                 |              |         |                                    |
| 94           | 498030 | Valve-Idle Adjustment                  |              |         |                                    |
| 95           | 94098  | ● Screw (Throttle Valve)               |              |         |                                    |

RPM Settings: Low Speed: 1900-2100  
High Speed: 3000-3200

- ★ Included in Gasket Set, Ref Number 358.
- Included in Carburetor Kit, Ref Number 121.
- ◆ Included in Carburetor Gasket Set, Ref Number 977.
- + Included in Valve Overhaul Kit, Ref Number 1033.

**NOTE:** All component dimensions given in U.S. inches  
1 inch = 25.4 mm

# REPAIR PARTS

## TRACTOR - - MODEL NUMBER 917.259050

### BRIGGS - MODEL NUMBER 287707, TYPE NUMBER 1255-E3

| KEY PART NO. | NO.    | DESCRIPTION   | KEY PART NO. | NO.            | DESCRIPTION                               |
|--------------|--------|---|--------------|----------------|---|
| 309          | 693551 | Motor-Starter(For Steel Ring Gear Only)                     | 729          | 281390         | Clip, Wire                                |
|              | 497595 | Motor-Starter (For Plastic Ring Gear Only)                  | 729A         | 225170         | Clip, Wire                                |
| 310          | 94003  | Screw (Starter Motor)                                       | 732          | 94625          | Screw(Starter Drive Cover)                |
| 311          | 497608 | Brush Set   | 741          | 262932         | Gear-Timing                               |
| 318          | 94734  | Screw (Mounting Bracket)                                    | 757          | 213998         | Link-Counterweight                        |
| 333          | 495859 | Armature, Magneto   | 758          | 499994         | Counterweight                             |
| 334          | 94731  | Screw (Armature)  | 759          | 230787         | Pin-Counterweight                         |
| 337          | 491055 | Spark Plug  | 761          | 94593          | Screw (Counterweight)                     |
| 358          | 690189 | Gasket Set  | 783          | 693713         | Gear-Pinion (For Steel Ring Gear Only)    |
| 363          | 19203  | Flywheel Puller   | 783A         | 693059         | Gear-Pinion (For Aluminum Ring Gear Only) |
| 383          | 89838  | Wrench-Spark Plug   | 783B         | 693058         | Gear-Pinion (For Plastic Ring Gear Only)  |
| 404          | 94927  | Washer (Governor Crank)                                     | 789          | 497708         | Harness, Wiring                           |
| 423          | 95163  | Screw (Air Cleaner Base)                                    | 801          | 497626         | Cap-Drive                                 |
| 455          | 222561 | Cup-Flywheel  | 802          | 497607         | Cap-End                                   |
| 462          | 225137 | Washer (Starter Cable)                                      | 803          | 497604         | Housing-Starter                           |
| 467          | 493903 | Knob-Air Cleaner  | 830          | 94555          | Stud-Rocker Arm                           |
| 474          | 393474 | Alternator  | 847          | 496415         | Dipstick/Tube Assembly                    |
| 503          | 806000 | Strap-Starter   | 851          | 224110         | Terminal-Cable                            |
| 505          | 231978 | Nut (Governor Lever)  | 868          | 499236         | ★+ Seal- Valve                            |
| 510A         | 693699 | Drive, Starter (Use With Steel Ring Gear Only)              | 871          | 262835         | Bushing-Guide                             |
| 510A         | 497606 | Drive, Starter (Use With Aluminum & Plastic Ring Gear Only) | 875          | 693686         | Base, Air Cleaner                         |
| 513          | 398003 | Clutch-Drive  | 877          | 393456         | Wire-Alternator                           |
| 523          | 495230 | Dipstick  | 878          | 393362         | Harness-Alternator                        |
| 524          | 281370 | ★ Dipstick Tube Seal  | 883          | 272293         | Gasket, Exhaust                           |
| 525          | 496113 | Dipstick Tube   | 914          | 94863          | Screw (Rocker Cover)                      |
| 535          | 496894 | Filter, A/C Element   | 934          | 94627          | Screw (Fan Retainer)                      |
| 544          | 497603 | Armature-Starter  | 947          | 497672         | Solenoid-Fuel                             |
| 552          | 491986 | Bushing-Gov. Lever  | 967          | 272403         | Filter-Pre Cleaner                        |
| 556          | 93621  | Screw (Alternator)  | 968          | 281758         | Cover, Air Cleaner                        |
| 562          | 94907  | Bolt (Governor Lever)                                       | 975          | 495933         | Bowl-Float                                |
| 579          | 92278  | Nut (Starter Cable)   | 977          | 690192         | Gasket Set-Carburetor                     |
| 601          | 93053  | Clamp-Hose  | 987          | 281166         | ● Seal-Throttle Shaft                     |
| 614          | 93306  | Pin-Cotter  | 996          | 690678         | Shield-Carburetor                         |
| 616          | 495157 | Crank-Governor  | 1005         | 691927         | Fan-Flywheel                              |
| 634          | 494453 | ● Seal-Spring Assembly(Manual Choke)                        | 1006         | 224413         | Retainer-Fan                              |
| 634A         | 494455 | Seal-Spring Assy. (Choke-A-Matic)                           | 1019         | 496758         | Label Kit                                 |
| 635          | 280872 | Boot, Spark Plug  | 1022         | 272475         | ★+ Gasket-Rocker Cover                    |
| 646          | 224546 | Brace-Air Cleaner   | 1023         | 224552         | Cover-Rocker                              |
| 654          | 94010  | Nut (Carburetor)  | 1026         | 494432         | Rod-Push (Intake)                         |
| 663          | 94929  | Screw (Air Cleaner Brace)                                   | 1026A        | 495136         | Rod-Push (Exhaust)                        |
| 663A         | 94704  | Screw (Air Cleaner Brace)                                   | 1029         | 224554         | Arm-Rocker                                |
| 667          | 94010  | Nut (Air Cleaner Brace)                                     | 1033         | 690190         | Valve Overhaul Kit                        |
| 668          | 280848 | Spacer  | 1034         | 495248         | Guide-Push Rod                            |
| 692          | 262715 | Spring-Detent   | 1036         | 499364         | Label Kit-Emission                        |
| 695          | 693109 | Screw (Ring Gear)   | 1044         | 94673          | Screw (Flywheel)                          |
| 697          | 94951  | Screw (Starter Motor)                                       | 1051         | 263080         | Ring-Retainer                             |
| 711          | 94704  | Screw (Carburetor Shield)                                   | 1058         | 273683         | Owner's Manual                            |
| 718          | 230192 | Dowel, Sleeve   | 1090         | 497605         | Retainer-Brush                            |
| 726          | 399676 | Gear Ring (Aluminum-Services Plastic Ring Gear Only)        | 1091         | 281364         | Cap-Limiter                               |
| 727          | 490324 | Cover, Starter Drive  | ---          | 28N707-1026-E1 | Replacement Engine                        |

RPM Settings: Low Speed: 1900-2100  
High Speed: 3000-3200

- ★ Included in Gasket Set, Ref Number 358.
- Included in Carburetor Kit, Ref Number 121.
- ◆ Included in Carburetor Gasket Set, Ref Number 977.
- + Included in Valve Overhaul Kit, Ref Number 1033.

**NOTE:** All component dimensions given in U.S. inches  
1 inch = 25.4 mm