



# REPAIR PARTS MANUAL

MODEL NO. 259060

Lawn Tractor 16HK HYD 2070AC

---

# CRAFTSMAN®

# HOW TO USE THIS MANUAL

This manual is designed to provide the customer with a means to identify the parts on his/her tractor when ordering repair parts. The illustrations may or may not represent the actual assemblies; therefore, it is not recommended to use this manual as a guide to assemble or disassemble the tractor. Some hardware and parts are drawn larger in order to more readily identify them.

Each tractor has its own model number.

The model number for your tractor can be found on the fender under the seat.

When ordering parts, always give the following information:

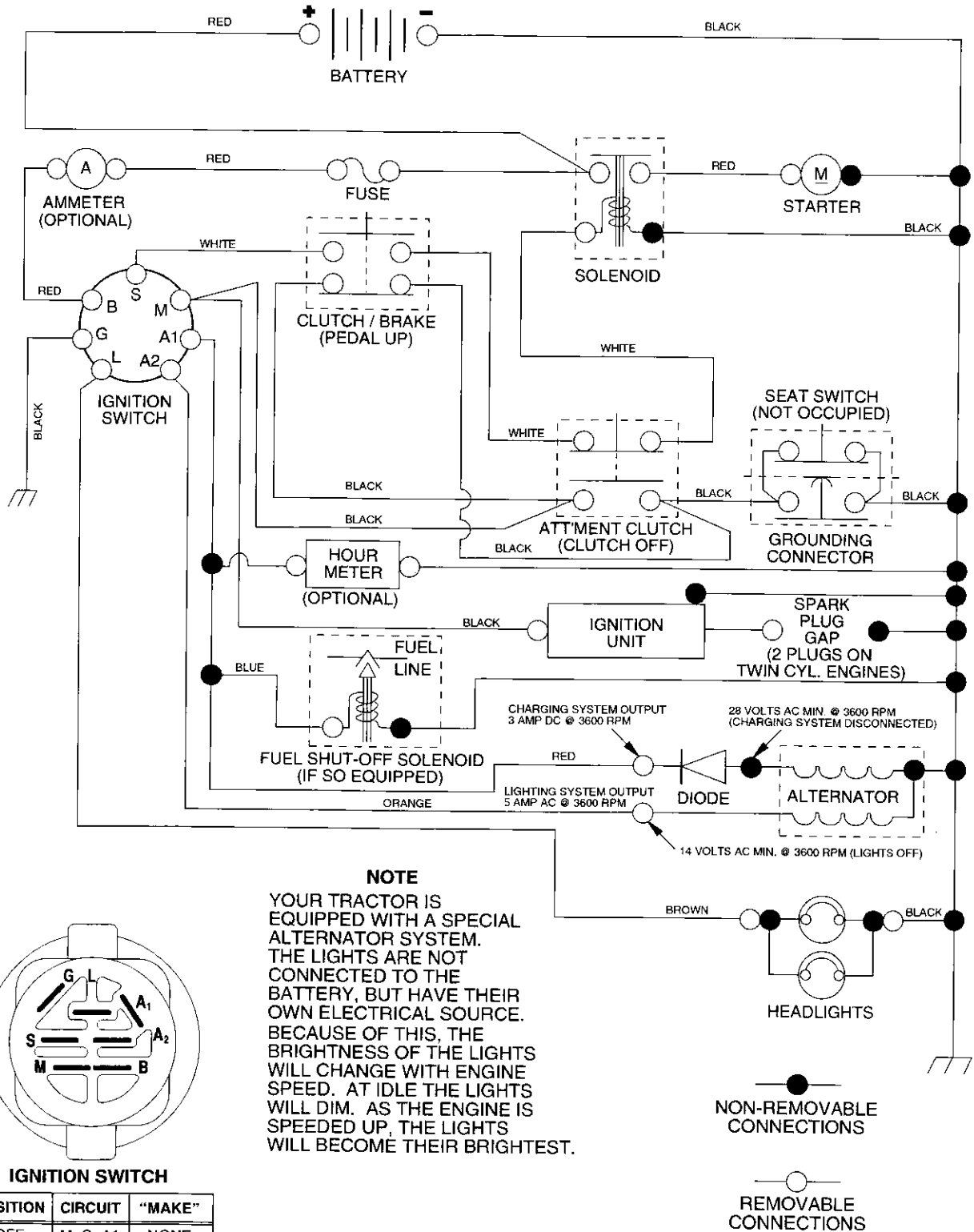
- Product - "Tractor"
- Model Number - "259060"
- Part Number
- Part Description

## TABLE OF CONTENTS

<b>SCHEMATIC</b> .....	<b>3</b>
<b>ELECTRICAL</b> .....	<b>4-5</b>
<b>CHASSIS</b> .....	<b>6-7</b>
<b>DRIVE</b> .....	<b>8-9</b>
<b>STEERING</b> .....	<b>10-11</b>
<b>SEAT</b> .....	<b>12</b>
<b>DECALS</b> .....	<b>13</b>
<b>ENGINE</b> .....	<b>14-15</b>
<b>MOWER LIFT</b> .....	<b>16-17</b>
<b>MOWER DECK</b> .....	<b>18-19</b>
<b>TRANSAXLE</b> .....	<b>20-21</b>
<b>ENGINE BREAKDOWN</b> .....	<b>22-27</b>

# TRACTOR- -MODEL NO. 917. 259060

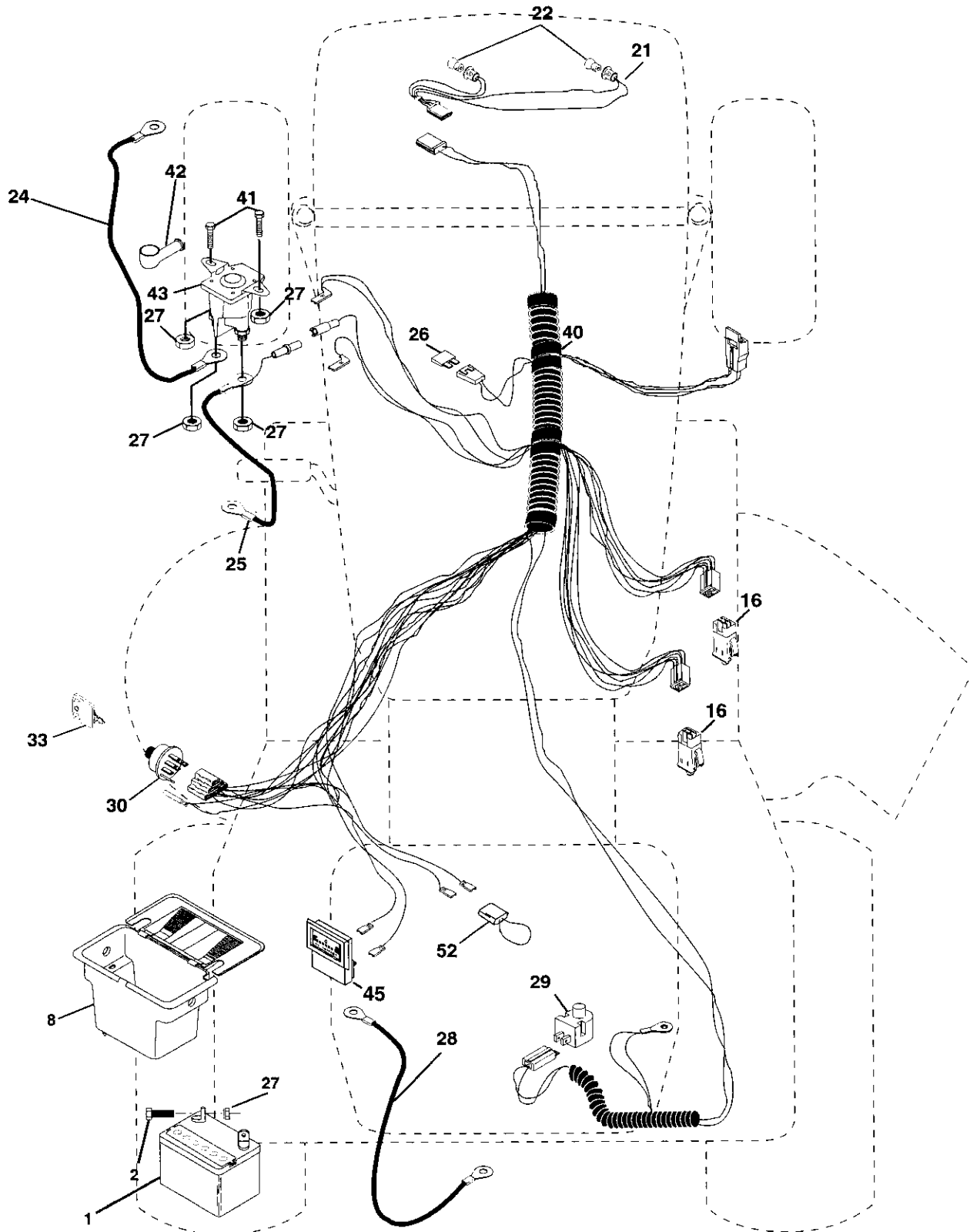
## SCHEMATIC



# REPAIR PARTS

TRACTOR- -MODEL NO. 917. 259060

## ELECTRICAL



# REPAIR PARTS

TRACTOR- -MODEL NO. 917. 259060

## ELECTRICAL

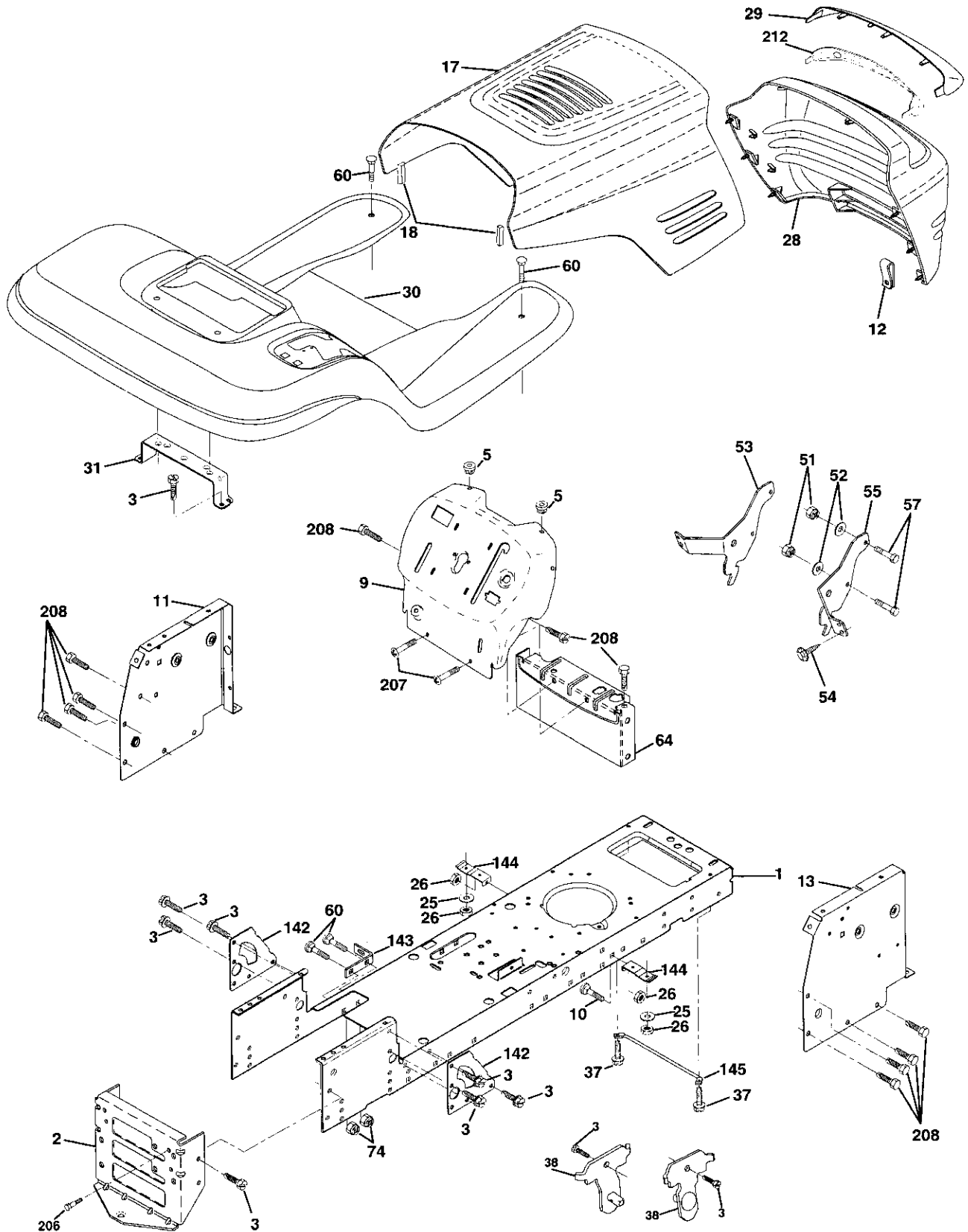
KEY NO.	PART NO.	DESCRIPTION
1	144925	Battery
2	74760412	Bolt, Hex Head 1/4-20 unc x 3/4
8	156417	Case, Battery Mech Hinge
16	153664	Switch, Interlock Push-In
21	166182	Harness, Light Socket (Includes 4152J)
22	4152J	Bulb, Light
24	4799J	Cable, Battery, 6 Gauge, Red, 11"
25	146147	Cable, Battery, 6 Gauge, Red, W/16 Wire
26	166180	Fuse, 15 Amp
27	73510400	Nut Keps Hex1/4-20 Unc
28	4207J	Cable, Ground, 6 Gauge, Black, 12"
29	121305X	Switch, Plunger
30	163968	Switch, Ignition
33	140403	Key, Ignition
40	170217	Harness, Ignition
41	71110408	Bolt, Hex Head, Fin. 1/4-20 x 1/2
42	131563	Cover, Terminal, Red
43	145673	Solenoid
45	121433X	Ammeter Rectangular
52	141940	Protection Wire Loop

**NOTE:** ALL COMPONENT DIMENSIONS GIVEN IN U.S. INCHES  
1 inch = 25.4 mm

# REPAIR PARTS

TRACTOR- -MODEL NO. 917.259060

## CHASSIS AND ENCLOSURES



# REPAIR PARTS

## TRACTOR- -MODEL NO. 917.259060

### CHASSIS AND ENCLOSURES

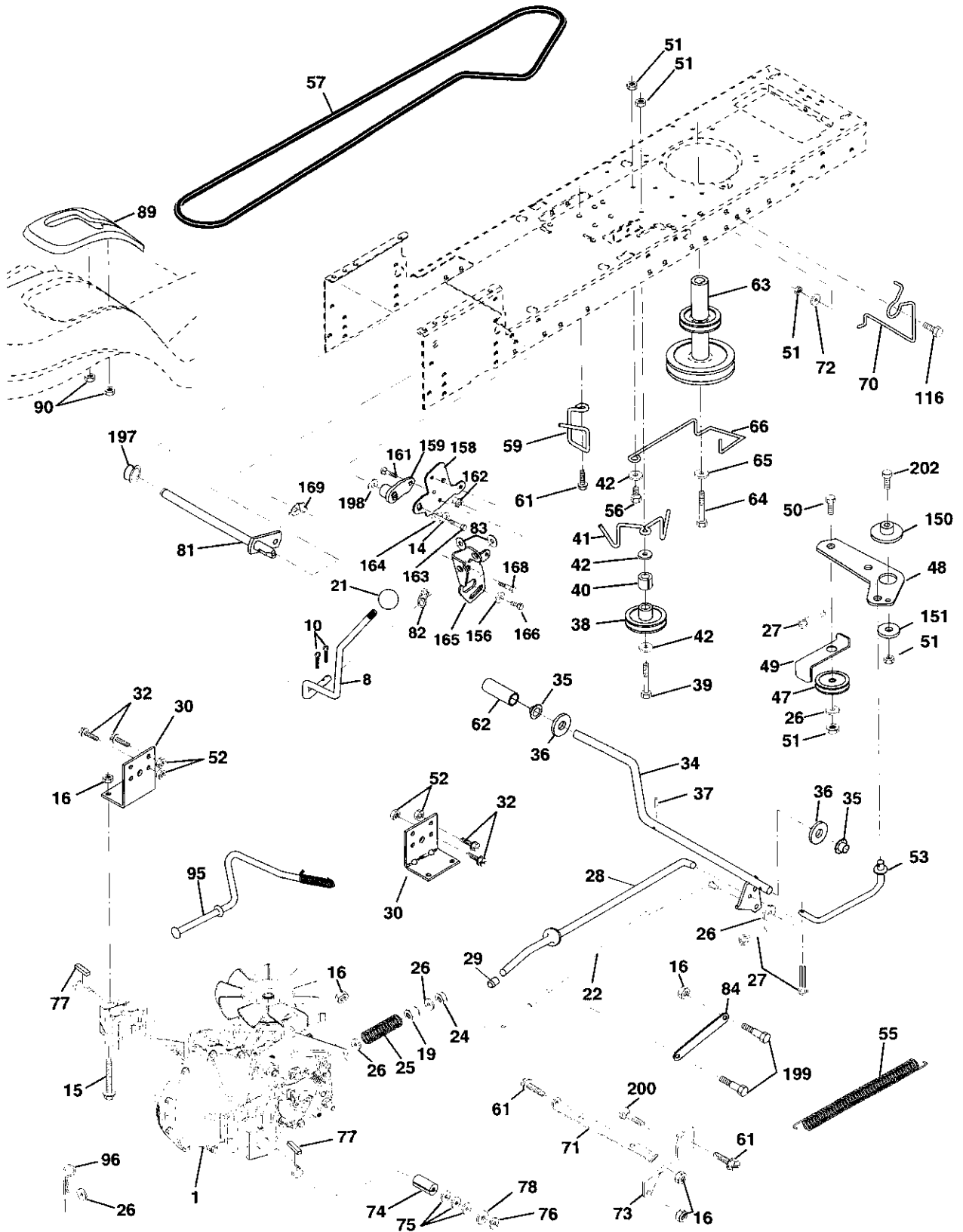
KEY NO.	PART NO.	DESCRIPTION
1	169830	Chassis Stamping
2	169061	Drawbar
3	17060612	Screw 3/8-16 x 3/4
5	155272	BumperHood/Dash
9	168337X012	Dash
10	STD533710	Bolt, Carriage 3/8-16 x 1
11	155927	Panel, Dash, L.H.
12	145660	Clip Tinnerman Grille P/L
13	172107X010	Panel, Dash, R.H.
17	144983X558	Hood Assembly
18	126938X	BumperHood
25	19131312	Washer 13/32 x 13/16 x 12 Gauge
26	STD541437	Nut
28	156725X558	Grille w/Clips
29	155217X599	Lens, Grille
30	164918X558	Fend/Ftrest Pnt STLT
31	139976	Bracket, Fender Support
37	17490508	Screw Thdrol 5/16-18 x 1/2 Tyt
38	169834	Bracket Asm. Pivot Mower Rear
51	73800400	Nut Lock w/Insert 1/4-20 UNC
52	19091416	Washer 9/32 x 7/8 x 16 Ga.
53	145201	Bracket Grille Pickoff LH
54	161464	Screw Hex Wshd 8-18 x 7/8
55	145202	Bracket Grille Pickoff RH
57	STD522507	Bolt, Fin Hex 1/4-20 UNC x .75
60	72140606	Bolt Rdhd Sqnk 3/8-16 UNC x 3/4
64	154798	Dash Lower STLT
74	73680600	Nut Crownlock 3/8-16 UNC
142	165867	Plate Reinforcement STLT
143	154966	Bracket Swaybar Chassis
144	154207	Bracket Pnt Footrest STLT
145	156524	RJod Pivot Chassis/Hood
206	170165	Bolt Shoulder 5/16 -18 TT
207	17670508	Screw Thdrol 5/16-18 x 1/2 TYTT
208	17670608	Screw Thdrol 3/8-16 x 1/2
212	165919	Insert Lens Reflective
--	5479J	Plug, Button

**NOTE:** All component dimensions given in U.S. inches  
1 inch = 25.4 mm

# REPAIR PARTS

TRACTOR- -MODEL NO. 917.259060

## DRIVE





# REPAIR PARTS

## TRACTOR- -MODEL NO. 917.259060

### DRIVE

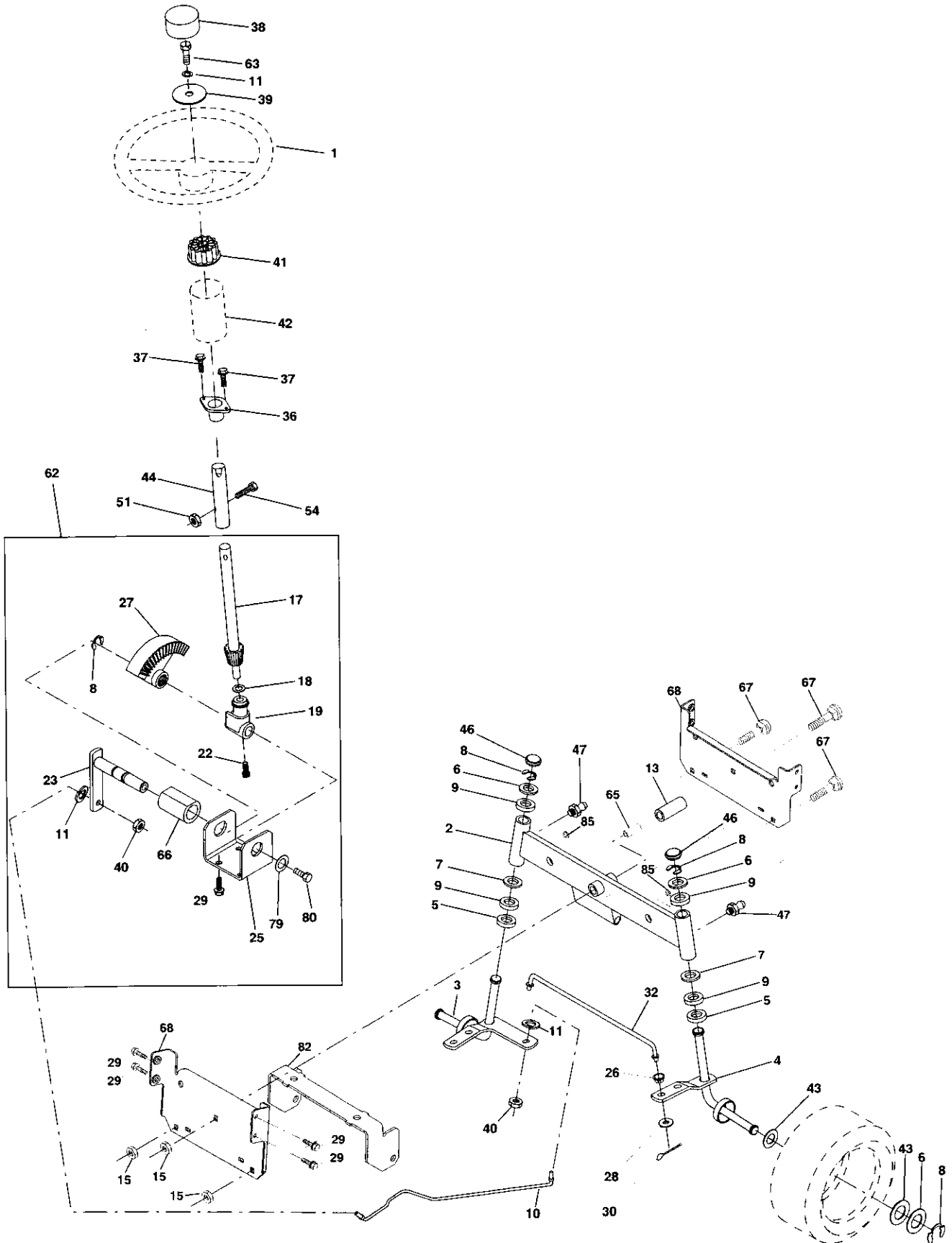
KEY NO.	PART NO.	DESCRIPTION	KEY NO.	PART NO.	DESCRIPTION
1	-----	Transaxle (See Breakdown) Hydro Gr 322-0510	64	71170764	Bolt Hex 7/16-20 x 4 Gr. 5
8	165866	Rod Shift Fender Adjust	65	STD551143	Washer
10	STD561210	Pin Cotter 1/8 x 1 CAD	66	154778	Keeper Belt Engine Hydro
14	10040400	Washer Lock Hvy Helical	70	134683	Keeper Belt Engine
15	74490544	Bolt Hex FLGHD 5/16-18 x Gr 5	71	169183	Strap Torque Lh Hydro
16	STD541431	Nut Lock Hex W/Ins. 5/16-18 Unc	72	19132012	Washer 13/32 x 1-1/4 x 12 Gauge
19	STD541437	Nut Lock Hex W/Wsh 3/8-16 Unc	73	169182	Strap Torque Rh Hydro
21	130564	Knob, Round 1/2-13	74	169496	Spacer, Split
22	169498	Rod, Brake Hydro	75	121749X	Washer 25/32 x 1-1/4 x 16 Gauge
24	73350600	Nut, Hex Jam 3/8-16 Unc	76	STD581075	E-Ring
25	106888X	Spring, Brake Rod	77	123583X	Key, Square
26	STD551037	Washer	78	121748X	Washer 25/32 x 1-5/8 x 16 Gauge
27	STD561210	Pin Cotter 1/8 x 3/4 CAD.	81	165596	Shaft Asm Cross Tapered
28	145204	Rod, Parking Brake	82	165711	Spring Torsion
29	71673	Cap, Parking Brake	83	19171216	Washer 17/32 x 3/4 x 16 Ga.
30	130807	Bracket, Transaxle	84	169843	Link Transaxle
32	74760512	Bolt Hex Hd 5/16-18 Unc x 3/4	89	164890X428	Console, Shift
34	155071	Shaft, Foot Pedal	90	124346X	Nut Self-Thd Wsh-hd 1/4 Zinc
35	120183X	Bearing, Nylon	95	170201	Control Bypass Hydro 20" Tires
36	19211616	Washer	96	4497H	Retainer Spring 1" Zinc/Cad
37	1572H	Pin, Roll	103	73940800	Nut Hex Jam Toplock 1/2-20unf
38	131494	Pulley, Idler, Flat	116	72110610	Bolt Rdhd Sqneck 3/8-16 x 1.25
39	74760644	Bolt	150	165850	Bushing Bellcrank Grd Drive
40	4470J	Spacer, Split	151	19133210	Washer 13/32 x 2 x 10 Ga.
41	165838	Keeper, Belt Idler	156	166002	Washer Srrted 5/16ID x 1.125
42	19131312	Washer 13/32 x 13/16 x 12 Gauge	158	165589	Bracket Shift Mount
47	127783	Pulley, Idler, V-Groove	159	165494	Hub Tapered Flange Shift Lt
48	154407	Bellcrank, Clutch	161	72140406	Bolt Rdhd Sqnk 1/4-20 x 3/4 Gr 5
49	123205X	Retainer, Belt	162	73680400	Nut Crownlock 1/4-20 Unc
50	STD523715	Bolt	163	74780416	Bolt Hex Fin 1/4-20 Unc x 1 Gr 5
51	STD541437	Nut Crownlock 3/8-16 UNC	164	19091010	Washer 5/8 x .281 x 10 Ga
52	STD541431	Nut, Crownlock 5/16-18 Unc	165	165623	Bracket Pivot Lever
53	105710X	Link, Clutch	166	166880	Screw 5/16-18 x 5/8
55	105709X	Spring, Return, Clutch	168	165492	Bolt Shoulder 5/16-18 x .561
56	STD523712	Bolt Hex 3/8-16 x 1-1/4	169	165580	Plate Fastening
57	140294	V-Belt	197	169613	Nyliner Snap-In 5/8"ID
59	169691	Keeper, Center Span	198	169593	Washer Nyl 7/8 ID x .105" Hyd
61	17060612	Screw . 3/8-16 x 3/4	199	169612	Bolt Shoulder 5/16-18UNC
62	8883R	Cover, Pedal	200	72140508	Bolt Rdhd Sgnk 5/16-18UNC x 1
63	140186	Pulley, Engine	202	72110612	Bolt Carr Sh 3/8-16 x 1-1/2 Gr.5
			205	19171616	Washer 17/32 x 1 x 16 Ga.

**NOTE:** All component dimensions given in U.S. inches  
1 inch = 25.4 mm

# REPAIR PARTS

TRACTOR- -MODEL NO. 917.259060

## STEERING ASSEMBLY



# REPAIR PARTS

## TRACTOR- -MODEL NO. 917.259060

### STEERING ASSEMBLY

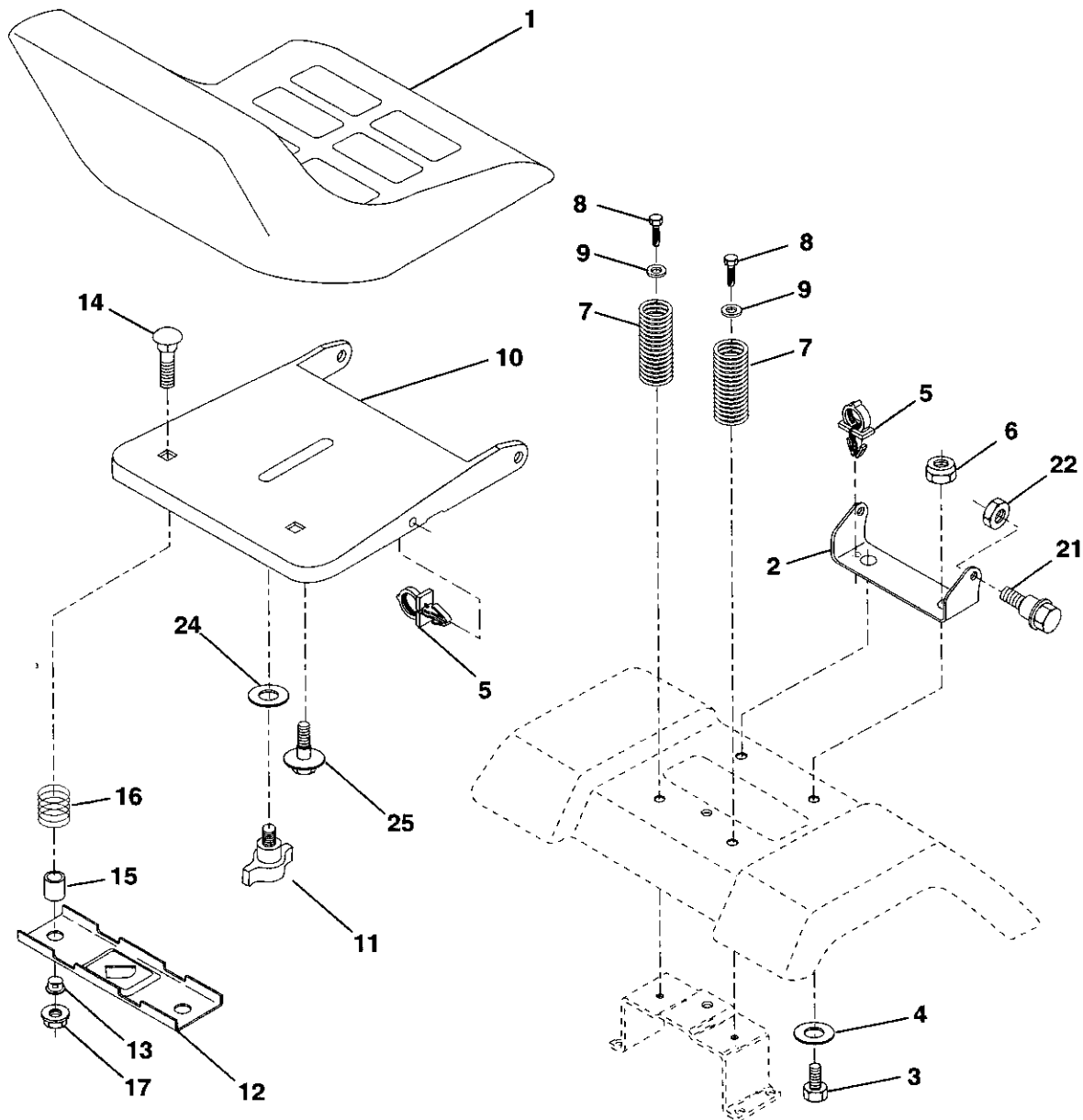
KEY NO.	PART NO.	DESCRIPTION
1	139768	Steering Wheel
2	154427	Axle Assembly STMP Dropped STL
3	156483	Spindle Assembly, L.H.
4	157473	Spindle Assembly, R.H.
5	6266H	Bearing, Race, Thrust, Hardened
6	121748X	Washer 25/32 x 1-5/8 x 16 Gauge
7	19272016	Washer 27/32 x 1-1/4 x 16 Gauge
8	12000029	Ring, Klip
9	3366R	Bearing, Steering Column
10	169832	Draglink
11	STD551137	Washer, Lock
13	136518	Spacer Brg Axle Front
15	145212	Nut, Hexflange Lock
17	156546	Shaft Assembly, Steering
18	57079	Washer, Thrust .515 x .750 x .033
19	160395	Support, Shaft
22	165857	Screw Hex Wshhd Torx
23	165851	Pittman Shaft Assembly
25	154406	Bracket, Steering
26	126847X	Bushing, Link, Drag
27	136874	Gear, Sector
28	19131416	Washer 13/32 x 7/8 x 16 Gauge
29	17060612	Screw 3/8-16 x 3/4
30	STD561210	Pin
32	130465	Rod, Tie
36	155099	Bushing, Steering
37	152927	Screw
38	139769	Insert, Steering Wheel
39	19133812	Washer 13/32 x 2-3/8 x 12 Gauge
40	STD541537	Nut Lock Center 3/8-24 UNF
41	100711L	Adaptor, Steering Wheel
42	145054x428	Boot, Steering Shaft
43	121749X	Washer 25/32 x 1-1/4 x 16 Gauge
44	153720	Extension Shaft Steering LR.LT
46	121232X	Cap, Spindle
47	6855M	Fitting, Grease
51	STD541431	Nut Lock Hex w/Ins. 5/16-18 UNC
54	74780520	Bolt Fin Hex 5/16-18 UNC x 1-1/4
62	167902	Kit Steering Asm Service
63	STD523710	Bolt, Fin Hex 3/8-16 UNC x 1 Gr 5
65	160367	Spacer Brace Axle
66	154404	Bearing Arm Pittman
67	72140618	Bolt Rdhd Sq 3/8-16 x 2-1/4
68	169827	Axle, Brace
79	19132012	Washer 13/32 x 1-1/4 x 12 Ga
80	74950612	Bolt Hex Nylon 3/8-16 x 3/4
82	169835	Bracket Susp Chassis Front
85	133835	Fastner Christmas Tree

**NOTE:** All component dimensions given in U.S. inches  
1 inch = 25.4 mm

# REPAIR PARTS

TRACTOR- -MODEL NO. 917.259060

## SEAT ASSEMBLY



KEY NO.	PART NO.	DESCRIPTION
1	140122	Seat
2	140551	Bracket, Pivot, Seat
3	71110616	Bolt
4	19131610	Washer 13/32 x 1 x 10 Gauge
5	145006	Clip, Push-In Hinged
6	STD541437	Nut
7	124181X	Spring, Seat
8	17000616	Screw 3/8-16 x 1-1/2
9	19131614	Washer 13/32 x 1 x 14 Gauge
10	155925	Pan, Seat Emboss QCK Conn.
11	166369	Knob Seat

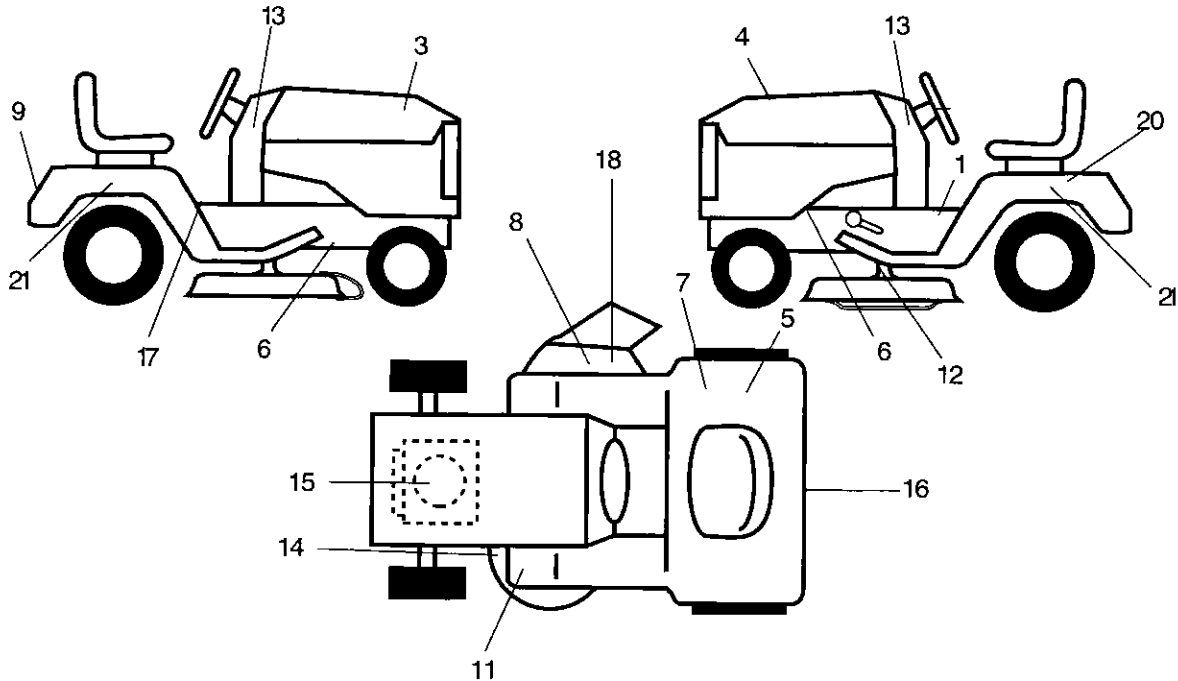
KEY NO.	PART NO.	DESCRIPTION
12	121246X	Bracket, Switch Mounting
13	121248X	Bushing, Snap
14	72050412	Bolt, Carriage 1/4-20 x 1-1/2
15	134300	Spacer, Split .28 x .88
16	121250X	Spring
17	123976X	Locknut, Flange 1/4 Grade 5
21	171852	Bolt, Shoulder 5/16-18 UNC
22	STD541431	Nut
24	19171912	Washer 17/32 x 1-3/16 x 12 Ga.
25	127018X	Bolt, Shoulder 5/16-18 x .62

**NOTE:** All component dimensions given in U.S. inches  
1 inch = 25.4 mm

# REPAIR PARTS

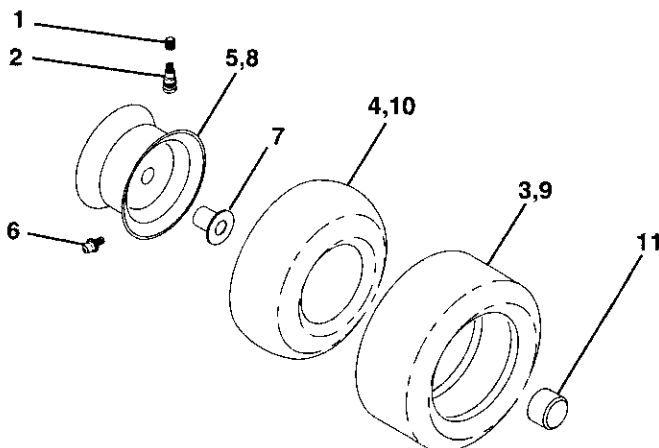
## TRACTOR- -MODEL NO. 917.259060

### DECALS



KEY NO.	PART NO.	DESCRIPTION	KEY NO.	PART NO.	DESCRIPTION
1	140837	Decal, Saddle Brake Parking	14	160396	Decal, V-Belt Schematic
3	171696	Decal, Hood, R.H.	15	165404	Decal, Engine
4	171697	Decal, Hood, L.H.	16	169210	Decal, By Pass Lt Hydro
5	126187X	Decal, DBA	17	145498	Decal, Read Owners Manual
6	159736	Decal, Chassis Hot Muffler	18	145494	Decal, Mower Cutting Symbol
7	145437	Decal Europe Stand CE	20	145005	Decal, Battery Dngr/Psn Eng
8	166887	Decal, Deck Mower EZ	21	163205	Decal, Fender Sd. Wht
9	163204	Decal, Fender, Craftsman	--	138311	Decal, Lift Handle
11	159737	Decal, Brake/Clutch	--	165800X428	Pad Footrest LH STLT
12	146046	Decal, V-Belt Drive Schematic	--	165799X428	Pad Footrest RH STLT
13	163252	Decal, Dash Panel	--	162598	Decal, Drawbar Load Limit
			--	173707	Manual Parts
			--	173705	Manual Oper Euro
			--	173706	Manual Oper Scan

### WHEELS & TIRES



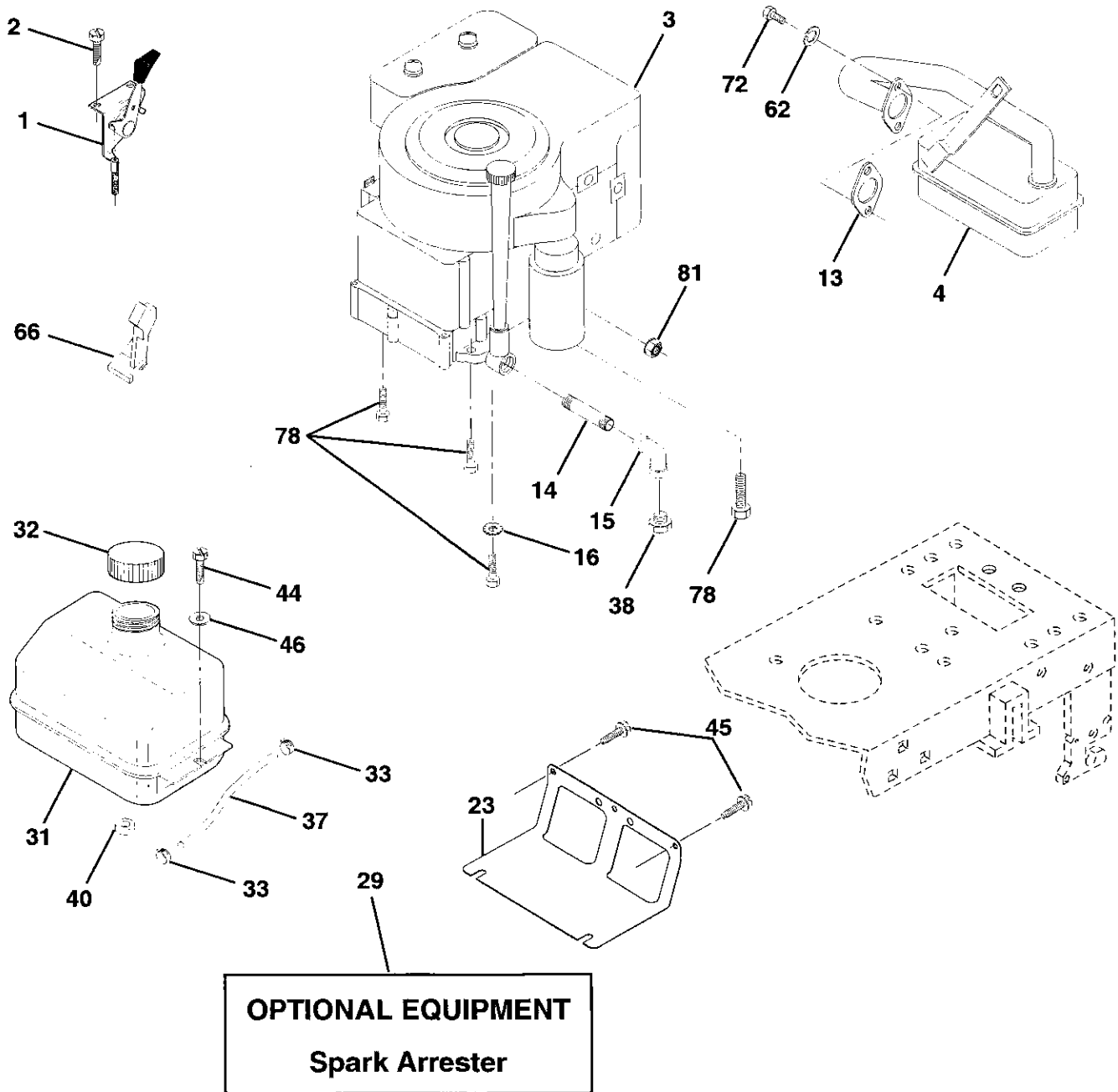
KEY NO.	PART NO.	DESCRIPTION
1	59192	Cap Value Tire
2	65139	Stem Value
3	106222X	Tire F Ts 15 X 6 0 - 6 Service
4	59904	Tube Inner Front #35060
5	106732X427	Rim Asm 6"front White Service
6	278H	Fitting Grease
7	9040H	Bearing Flange
8	106108X427	Rim Asm 8"rear White Service
9	106268X	Tire R Ts 18x9 5-8 Service
10	7152J	Tube Rear 9 5 X 8 Service
11	104757X	Cap Axle Blk 1 50 X 1 00
--	144334	Sealant, Tire (10 oz. tube)

**NOTE:** All component dimensions given in U.S. inches  
1 inch = 25.4 mm

# REPAIR PARTS

TRACTOR- -MODEL NO. 917.259060

## ENGINE



# REPAIR PARTS

## TRACTOR- -MODEL NO. 917.259060

### ENGINE

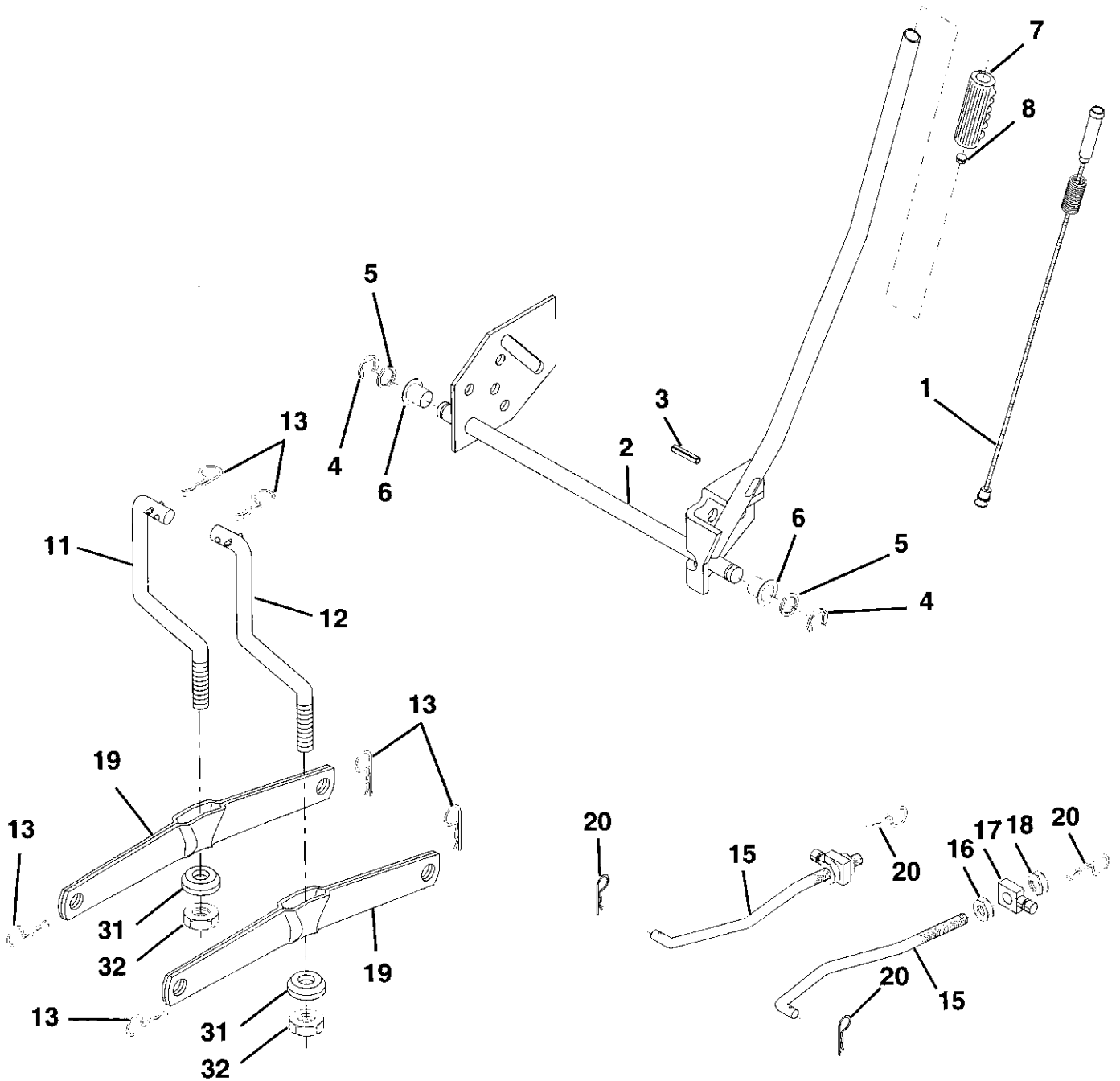
KEY NO.	PART NO.	DESCRIPTION
1	162158	Control, Throt/ Ch Lh
2	17720410	Screw, Hex Thd Cut 1/4-20 x 5/8 T
3	-----	Engine, (See Breakdown)
		Briggs Model 310707-0136-E1
4	137352	Muffler Exhaust B&S Lt
13	165291	Gasket 1 313 Id Tin Plated
14	13280324	Nipple Pipe 3/8 Npt X 3"
15	13200300	Elbow Std 90 Degree 3/8-18 NPT
16	STD551237	Washer Lock Ext Tooth 3/8
23	169837	Shield Browning/Debris Guard
29	137180	Arrestor Spark
31	109202X	Tank Fuel 1 25 Fr
32	158990	Cap Asm Fuel Sears Vented
33	123487X	Clamp Hose Blk
37	137040	Line Fuel 20"
38	-----	Plug, Oil Drain (Order From Engine Manufacturer)
40	124028X	Bushing Snap Nyl Blk Fuel Line
44	17670412	Screw Hexwsh Thdrol 1/4-20 x 3/4
45	17000612	Screw Hexwsh Thdr 3/8-16 x 3/4
46	19091416	Washer 9/32 x 7/8 x 16ga.
62	STD551131	Washer Lock Hvy Hlcl Spr 5/16
66	127951	Stop Throttle
72	71070512	Screw Hexhd Cap 5/16-18x3/4
78	17060620	Screw 3/8-16x1-1/4
81	73510400	Nut Keps Hex 1/4-20 Unc

**NOTE:** All component dimensions given in U.S. inches  
1 inch = 25.4 mm

# REPAIR PARTS

TRACTOR- -MODEL NO. 917.259060

## MOWER LIFT





# REPAIR PARTS

TRACTOR- -MODEL NO. 917.259060

## MOWER LIFT

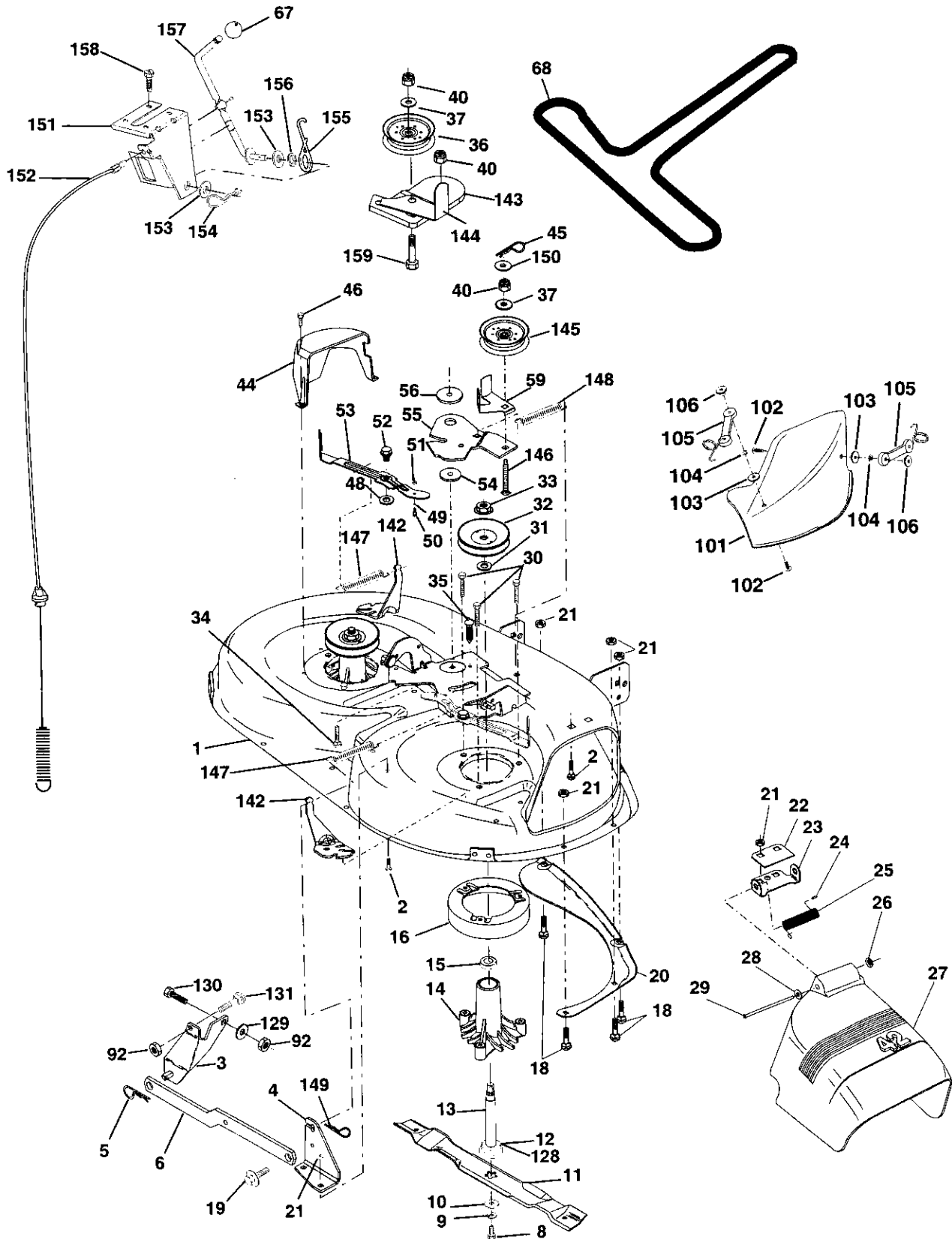
KEY NO.	PART NO.	DESCRIPTION
1	159460	Lift Lever Inner Wire Assembly
2	159471	Shaft Assembly, Lift
3	105767X	Pin, Groove
4	12000002	E-Ring
5	19211621	Washer 21/32 x 1 x 21 Gauge
6	120183X	Bearing, Nylon
7	125631X	Grip, Handle, Fluted
8	122365X	Button, Plunger, Red
11	139865	Link, Lift, L.H.
12	139866	Link, Lift, R.H.
13	STD624008	Retainer Spring
15	173288	Link, Front
16	73350800	Nut, Hex, Jam 1/2-13 UNC
17	130171	Trunnion
18	73800800	Locknut, Hex, with Washer Insert 1/2-13 UNC
19	139868	Arm, Suspension, Rear
20	163552	Retainer Spring
31	140302	Bearing, Pvt, Lift Spherical
32	73540600	Nut, Crownlock 3/8-24

**NOTE:** All component dimensions given in U.S. inches  
1 inch = 25.4 mm

# REPAIR PARTS

TRACTOR- -MODEL NO. 917.259060

## MOWER



# REPAIR PARTS

## TRACTOR- -MODEL NO. 917.259060

### MOWER

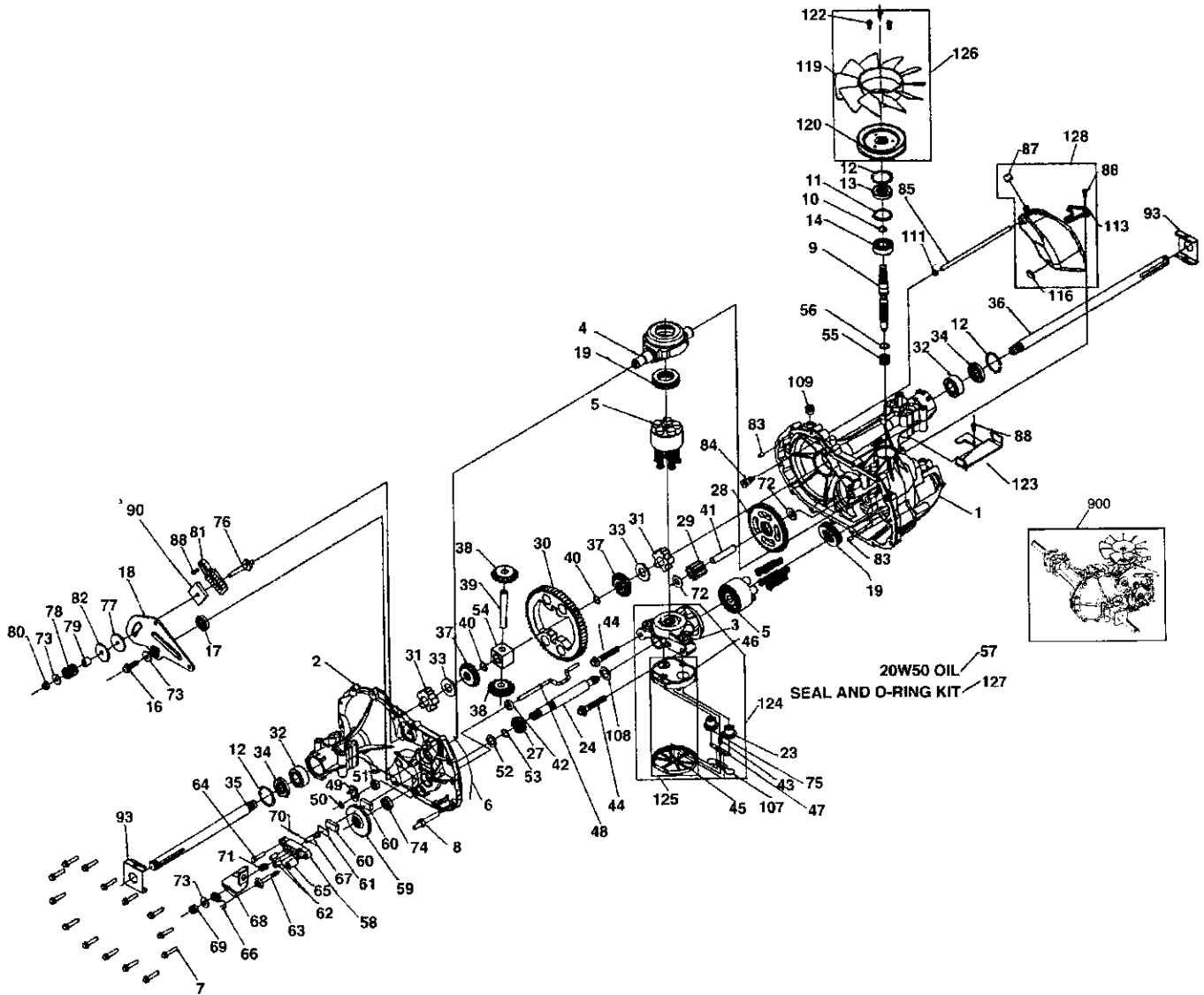
KEY NO.	PART NO.	DESCRIPTION	KEY NO.	PART NO.	DESCRIPTION
1	165892	Mower Deck Assembly, 42"	53	131845	Arm Assembly, Pad, Brake
2	STD533107	Bolt	54	133943	Washer, Hardened
3	138017	Bracket Assembly, Sway Bar, Front	55	155046	Arm, Idler
4	165460	Bracket Sway Bar 38/42" Deck	56	165723	Spacer, Retainer
5	STD624008	Retainer Spring	59	141043	Guard, TUV Idler
6	130832	Arm, Suspension, Rear	67	149846	Knob Custom Oval
8	850857	Bolt, Hex 3/8-24 x 1.25 Gr. 8	68	144959	V-Belt
9	STD551137	Washer, Lock	92	STD541437	Nut
10	140296	Washer, Hardened	101	136420	Mulcher Cover
11	134149	Blade, Mulching	102	71161010	Screw
12	129895	Bearing, Ball	103	19061216	Washer #10
13	137645	Shaft Assembly, Mandrel, Vented (Includes Key Number 12)	104	STD551110	Washer, Lock
14	128774	Housing, Mandrel, Vented	105	160793	Latch Assembly, Bagger
15	110485X	Bearing, Ball, Mandrel	106	2029J	Nut, Weld
16	140329	Stripper, Vented Mower Deck	128	153390	Washer Felt
18	72140505	Bolt, Carriage 5/16-18 x 5/8	129	19131312	Washer 13/32 x 13/16 x 12 Ga.
19	132827	Bolt, Shoulder	130	STD523710	Bolt, Fin Hex 3/8-16 UNC x 1 Gr. 5
20	159770	Baffle, Vortex	131	STD533710	Bolt, Rdhd Sqnk 3/8-16UNC x 1
21	STD541431	Nut Crownlock 5/16-18 UNC	142	165890	Arm Spring Brake Mower
22	134753	Stiffener Bracket	143	157109	Bracket Arm Idler 42"
23	131267	Bracket, Deflector	144	158634	Keeper Belt 42" Clutch Cable
24	105304X	Cap, Sleeve	145	165888	Pulley Idler Flat
25	123713X	Spring, Torsion, Deflector	146	165891	Bolt Carriage Idler
26	110452X	Nut, Push	147	131335	Spring Extension
27	130968X428	Shield, Deflector	148	169022	Spring Return Idler
28	19111016	Washer 11/32 x 5/8 x 16 Ga.	149	165898	Retainer Spring Yellow Zinc
29	131491	Rod, Hinge	150	19091216	Washer 9/32 x 3/4 x 16 Ga.
30	157722	Screw Thdrol Washer Head	151	169670	Bracket Clutch
31	129963	Washer, Spacer	152	169676	Cable Clutch 42 In
32	153535	Pulley, Mandrel	153	169674	Washer Flat 3/8" Type B
33	137266	Nut, Toplock, Flanged	154	169675	Spring Retainer
34	STD533717	Bolt	155	169671	Spring Retention Lever
35	133835	Fastner, Christmas Tree	156	169672	Spacer
36	131494	Pulley, Idler, Flat	157	169669	Rod Clutch
37	STD551037	Washer 13/32 x 13/16 x 16 Gauge	158	17720410	Screw Hex Thd Cut 1/4-20 x 5/8
40	STD541437	Nut Crownlock 3/8-16 UNC	159	72140614	Bolt Rdhd Sqn 3/8-16 UNC x 1-3/4
44	140088	Guard, Mandrel, L.H.	--	130794	Mandrel Assembly (Includes Key Numbers 8-10, 12-15, 31 and 32)
45	STD624003	Retainer	--	169583	Mower Deck, Complete (Standard Deck, Order Separately Mulcher Plate Components, Key Nos. 101- 106 )
46	137729	Screw, Thd. Roll 1/4-20 x 5/8			
48	133944	Washer, Hardened			
49	155066	Roller Assembly, Cam Follower			
50	131340	Bolt, Shoulder #10-24 Grade 5			
51	STD541410	Locknut			
52	139888	Bolt, Shoulder 5/16-18 UNC			

**NOTE:** All component dimensions given in U.S. inches  
1 inch = 25.4 mm

# REPAIR PARTS

TRACTOR - - MODEL NUMBER 917.259060

HYDRO GEAR TRANSAXLE - MODEL NUMBER 322-0510



# REPAIR PARTS

## TRACTOR - - MODEL NUMBER 917.259060

### HYDRO GEAR TRANSAXLE - MODEL NUMBER 322-0510

KEY PART NO.	NO.	DESCRIPTION	KEY PART NO.	NO.	DESCRIPTION
1	170351	Main Housing, Assembly	60	142883	Brake Puck
2	170352	Side Housing, Assembly	61	142882	Puck Plate
3	170353	Center Section, Assembly	62	170409	Brake Actuating Pin
4	170354	Swashplate, Trunion Machined	63	170410	HFHCS 1/4-20X2 W/Patch, Special Flange
5	169898	Block - Assembly	64	142892	Bolt, 1/4-20 X 1 W/Patch
6	170355	Sealant	65	170411	Spacer
7	170356	Hex Flange Screw 1/4-20 X 1.25	66	170412	Spring, Brake Arm Bias
8	170357	Stud, 5/16-24 Hex Double End	67	170413	SQ. HD. BOLT 5/16-24-Ribbed
9	170358	Shaft, Input	68	170414	Arm, Brake
10	170359	Ring - Retaining	69	170415	Slotted Hex Nut 5/16-24
11	170360	Spacer	70	170416	Cotter Pin 3/32 X 3/4
12	169870	Ring - Retaining	71	170417	Compression Spring Brake Anti-Drag
13	170361	Seal, Lip .67 X 1.58 X .276	72	170418	Washer, HT .5 I.D. X 1 O.D. X .032
14	173158	Ball Brg 17MM ID X 40MM OD X 12MM	73	142884	Flat - Washer 11/32 I.D. X 7/8 O.D.
16	170362	Hex FLlange Head Screw 5/16-24 X 0.75	74	170419	Oil Seal .625 X 1.0 X .25
17	170363	Lip Seal 18 X 32 X 7	75	170420	Check Plug Assembly, .027, Washer
18	170364	Arm, Control	76	170421	Stud, 5/16-24 Friction Pack
19	173159	Bearing, 30X52X13 Thrust	77	170422	Puck, .330 X 1.50 X .0975
23	170365	Check Plug Assembly, Washer	78	142969	Spring, Helicl Comp
24	170366	Shaft, Motor1	79	142980	Spacer
27	170367	Gear - Pinion, 13T	80	150778	Hex Lock Nut 5/16-24 UNJF(Nylon Insert)
28	170368	10T/48T GEAR	81	170423	Wedge, Friction Pack
29	170369	Gear, 10T Jackshaft	82	170424	Clip, Washer .316X1.50X.1046 (Plated)
30	170370	60T Bull Gear	83	161168	Pin, Standard Headless
31	170371	Sleeve Bearing .75 X 1.575 X .625	84	170425	Fitting, 5/16 Sae 5/32 Tube
32	170389	Sleeve Bearing (Outboard).75X1.750X.625	85	170426	Hose, Expansion Tank
33	142991	Washer, 3/4 ID X 1-1/2 OD X .13 THK	87	173160	Cap, Vent
34	170390	Lip Seal Axle Seal	88	170428	Bolt, Self Tapping 10-32 X 1/2
35	170391	Shaft, Axle .75 X 11.39 (Key, R.H.)	90	170430	Puck, Inner Wedge
36	170392	Shaft, Axle .75 X 16.99 (Key, L.H.)	93	170431	Spring Clip - Housing Thrust
37	150792	Miter Gear (SPLINED)	107	170432	Deflector
38	150793	Miter Gear 15T (0.5 ID)	108	170433	Washer, Motorshaft .711DX1.15ODX.030THK
39	150809	Shaft	109	170434	Plug, Sae #6
40	170393	Ring, Spiral Retaining	111	170435	O-ring .07 x .301 I.D.
41	170394	Pin, Jackshaft	113	170437	Bracket, Support Expansion Tank
42	170395	Magnet, Rling	116	170438	Sillicon Sponge
43	170396	Spring, Bypass	119	173161	Fan
44	150797	Hydro mtg Screw 3/8-24 X 2.5 Long	120	17044	Pulley
45	170397	Flilter	122	173162	#12 T.F. Screw-lindented Hex Washer Head
46	170398	Base, Filter	123	173163	Bracket Belt Keeper
47	170399	Actuator, Bypass	124	170444	Center Section-Filter-Bypass Assembly
48	170400	Rod, Bypass Actuator	125	170445	Filter Assembly
49	170401	Arm, Bypass	126	173164	Fan - Pulley Service Aassembly
50	170402	Retaining Ring .250 External	127	170447	Seal - O-ring Kit
51	170403	Seal, Lip .741 X .250 X .250 TC	128	173165	Kit, Expansion Tank
52	170404	Flat Washer, 5/8 ID X 1.0 OD X .05 THK	900	171613	Transaxle, complete
53	170405	Retaining Ring			
54	170406	Bearing, Center Block			
55	142977	Spring - Helical Compression			
56	142978	Washer			
57	150798	20W-50 OIL72.8 oz			
58	170407	Brake Yoke			
59	170408	Rotor, Brake			

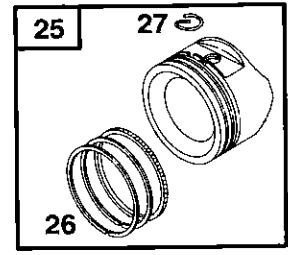
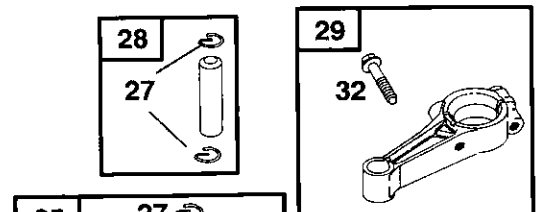
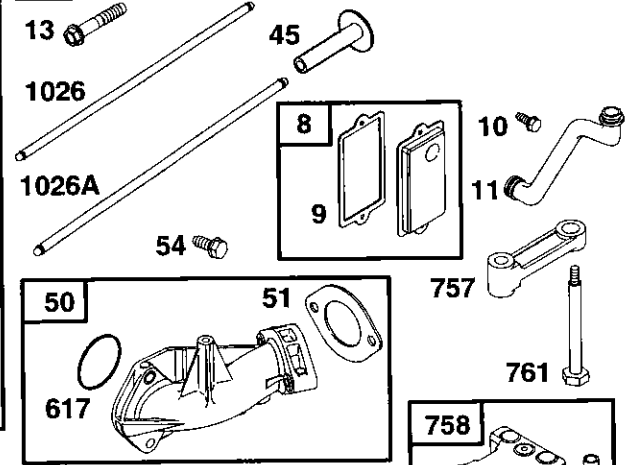
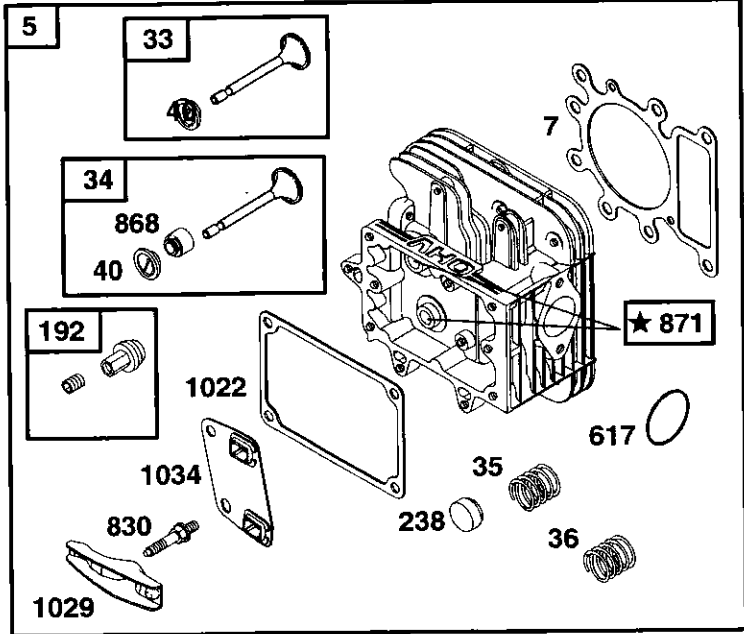
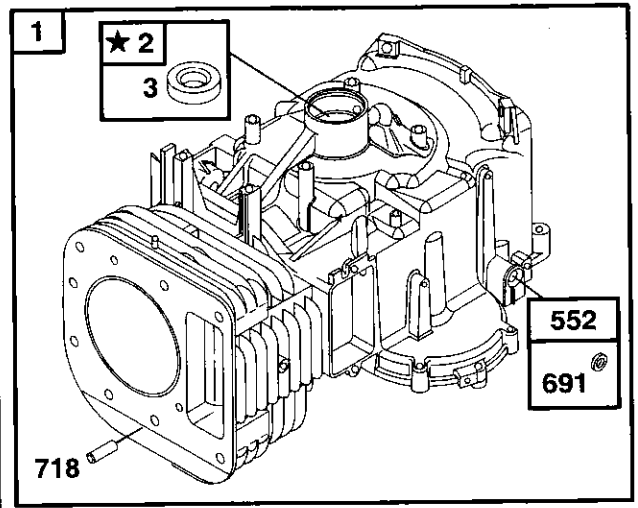
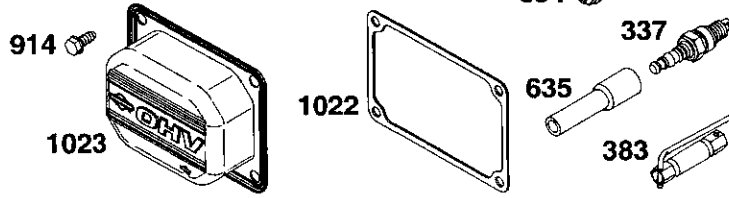
NOTE: All component dimensions given in U.S. inches  
1inch = 25.4 mm

# REPAIR PARTS

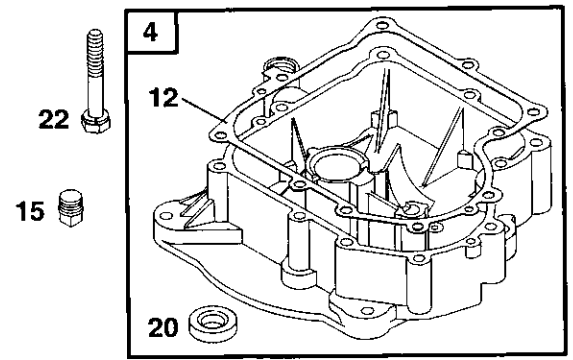
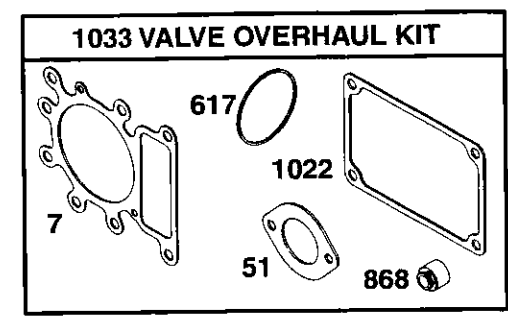
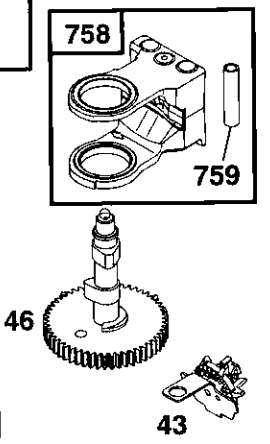
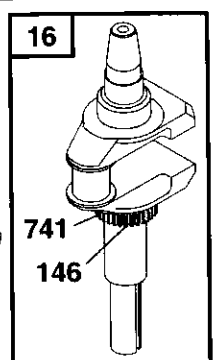
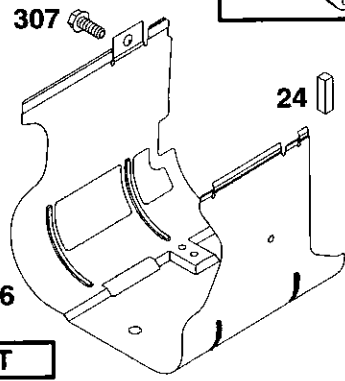
TRACTOR - - MODEL NUMBER 917.259060

BRIGGS - MODEL NUMBER 310707, TYPE NUMBER 0136-E1

★ REQUIRES SPECIAL TOOLS TO INSTALL. SEE REPAIR INSTRUCTION MANUAL.



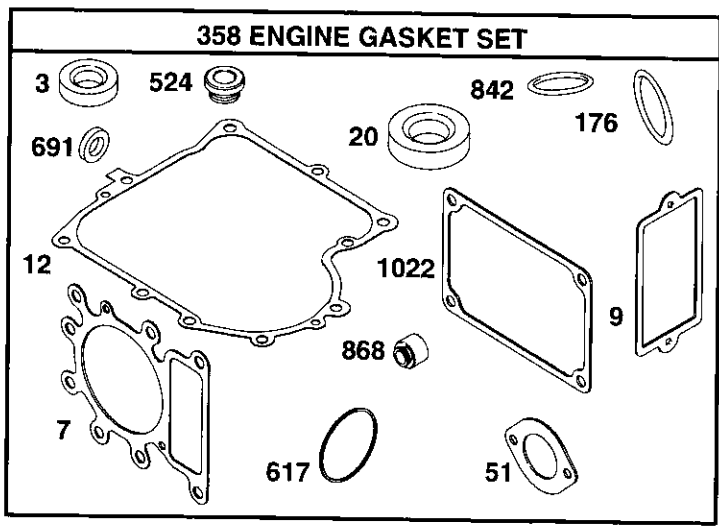
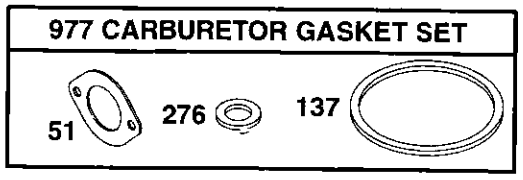
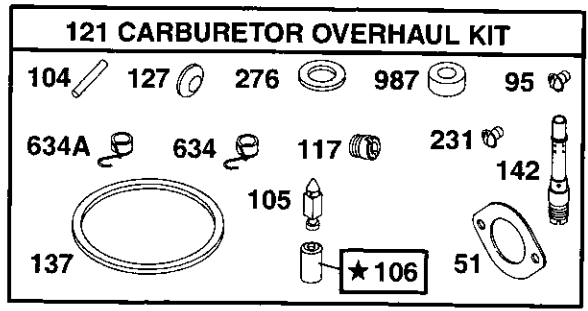
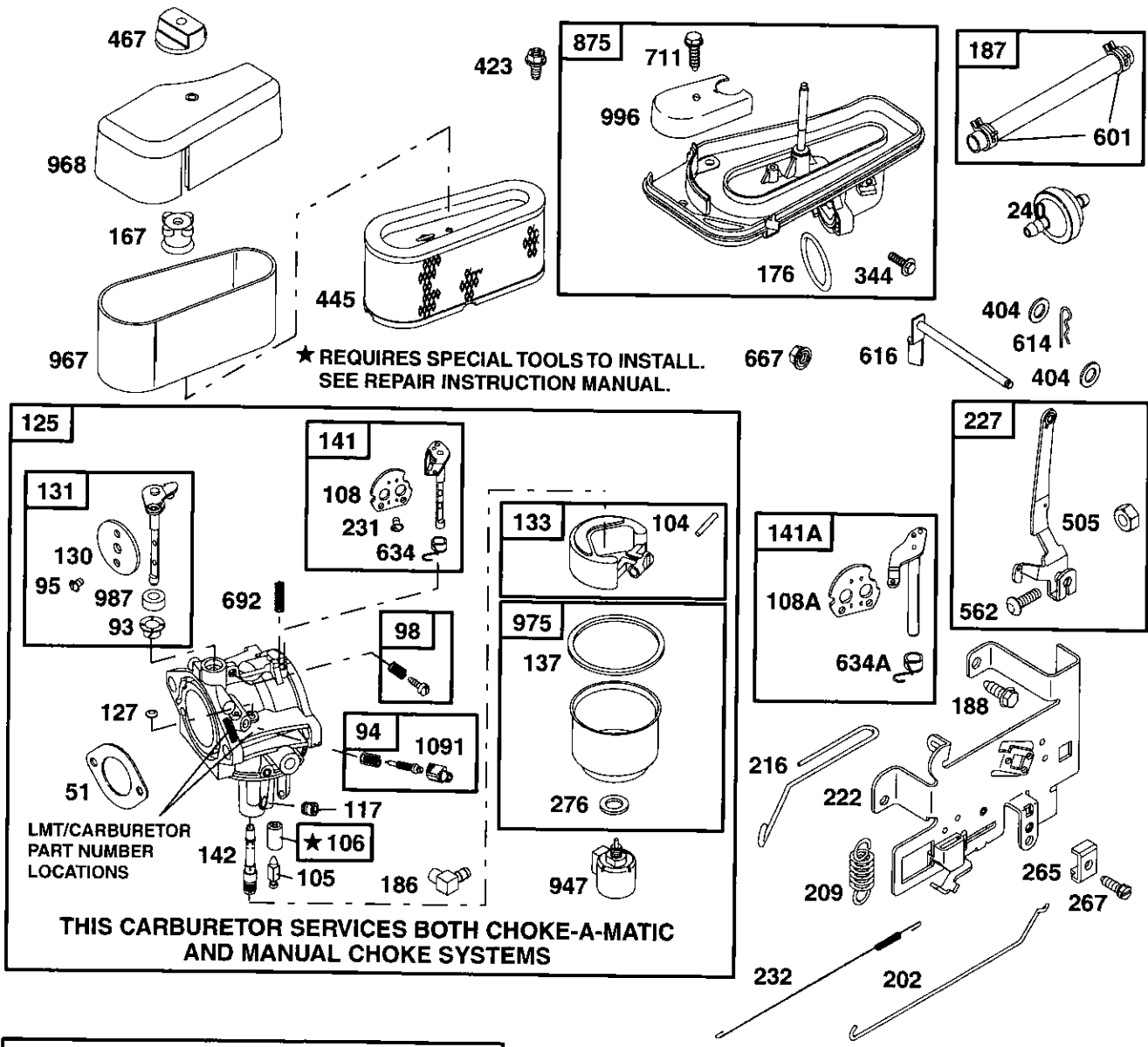
1019 LABEL KIT  
1058 OWNER'S MANUAL



# REPAIR PARTS

TRACTOR - - MODEL NUMBER 917.259060

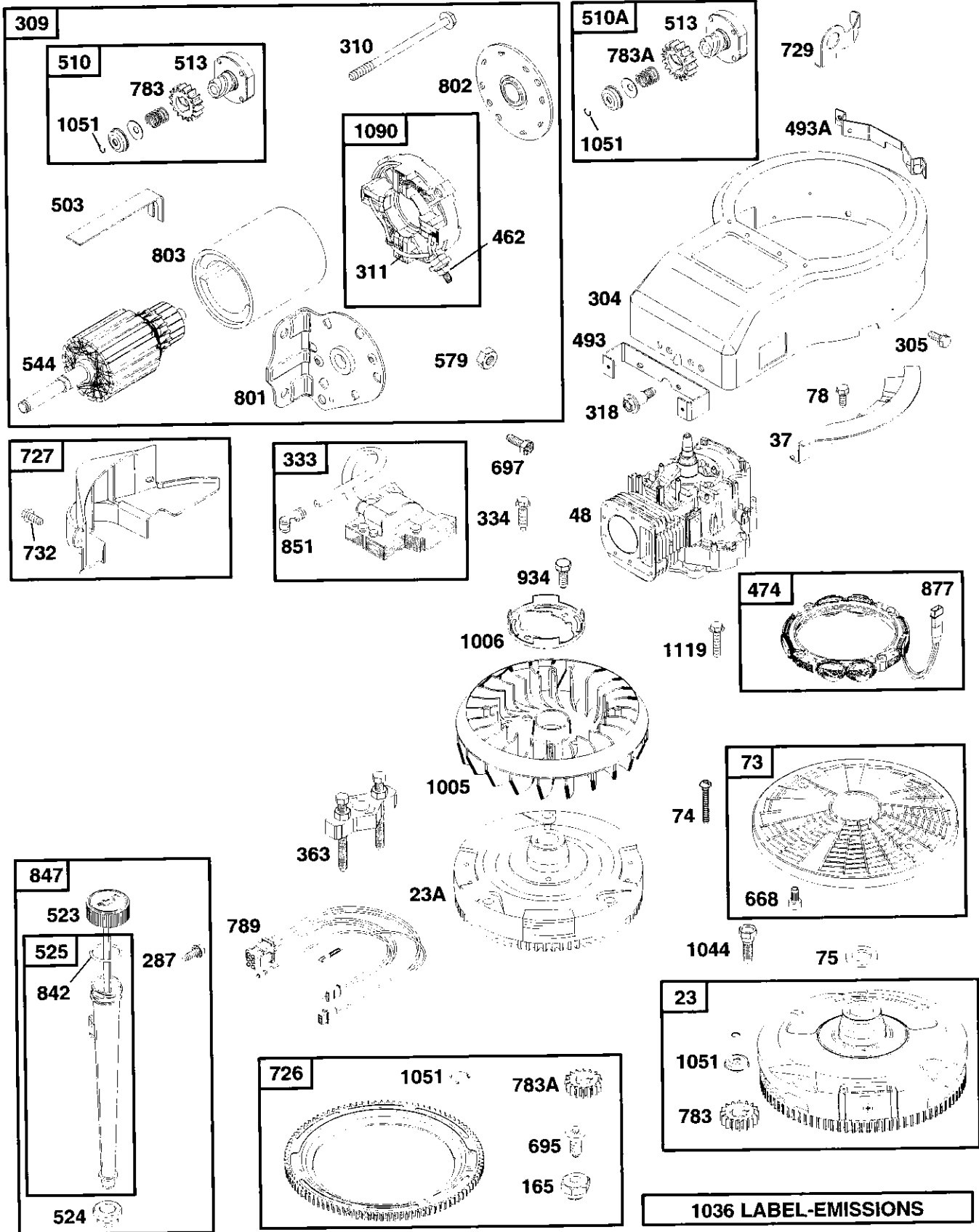
BRIGGS - MODEL NUMBER 310707, TYPE NUMBER 0136-E1



# REPAIR PARTS

TRACTOR - - MODEL NUMBER 917.259060

BRIGGS - MODEL NUMBER 310707, TYPE NUMBER 0136-E1



1036 LABEL-EMISSIONS



# REPAIR PARTS

## TRACTOR - - MODEL NUMBER 917.259060

### BRIGGS - MODEL NUMBER 310707, TYPE NUMBER 0136-E1

KEY NO.	PART NO.	DESCRIPTION	KEY NO.	PART NO.	DESCRIPTION
1	690156	Cylinder Assembly	105	231855	● Valve-Float Needle
2	399265	Bushing/Seal Kit	106	690577	● Seat-Inlet
3	291675	★ Seal-Oil	108	690464	Valve-Choke (Manual Choke)
4	494238	Sump-Engine	108A	692344	Valve-Choke (Choke A Matic)
5	690188	Head-Cylinder	117	692408	● Jet, Main (Standard)
7	692410	★+ Gasket-Cylinder Head		692411	Jet, Main (High Altitude)
8	495735	Breather Assembly	121	690191	Carburetor Overhaul Kit
9	27803	★ Gasket-Breather	125	690194	Carburetor
10	691666	Screw (Breather Assembly)	127	695005	● Plug-Welch
11	691328	Tube-Breather	130	691750	Valve-Throttle
12	271916	★ Gasket-Crankcase (.015Thick, Std.)	131	494379	Throttle Shaft Kit
	271997	Gasket-Crankcase (.005 Thick)	133	494381	Float-Carburetor
	271996	Gasket-Crankcase (.009 Thick)	137	281165	Gasket-Float Bowl
13	690360	Screw (Cylinder Head, 3-9/16")	141	495097	Choke Shaft Kit (Manual Choke)
15	94239	Plug-Oil Drain	141A	495931	Choke Shaft Kit (Choke A Matic)
16	690136	Crankshaft	142	692412	● Nozzle-Carburetor
20	291675	★ Seal-Oil	146	94196	Key-Timing
22	95187	Screw (Crankcase Cover)	165	693148	Nut (Ring Gear)
23	693557	Flywheel (Steel Ring Gear)	167	281051	Air Cleaner Stud Seal
23A	492326	Flywheel (Plastic Ring Gear)	176	281106	O-Ring Seal (Air Cleaner Base)
24	222698	Key-Flywheel	186	493496	Connector-Hose
25	692271	Piston Assembly (Std.)	187	298049	Line-Fuel (Cut to Required Length)
	692272	Piston Assembly (.010 O.S.)	188	94929	Screw (Control Bracket)
	692273	Piston Assembly (.020 O.S.)	192	492160	Adjuster- Rocker Arm
	692274	Piston Assembly (.030 O.S.)	202	262767	Mechanical Governor Link
26	690162	Ring Set- Piston (Std.)	209	260695	Spring- Governor
	690164	Ring Set- Piston (.010 O.S.)	216	262766	Link-Choke
	690166	Ring Set- Piston (.020 O.S.)	222	694042	Bracket-Control
	690168	Ring Set- Piston (.030 O.S.)	227	691374	Lever-Governor Control
27	691299	Lock-Piston Pin	231	691636	● Screw (Choke Valve)
28	498319	Pin Assembly- Piston (Std.)	232	262785	Spring-Governor Link
	498320	Pin Assembly-Piston(.005o.s.)	238	262836	Cap- Valve
29	692419	Rod-Connecting (Std.)	240	394358	Filter-Fuel
	499940	Rod-Connecting (.020 U.S.)	265	221535	Clamp-Casing
32	692852	Screw (Connecting Rod)	267	695134	Screw (Casing Clamp)
33	495856	Valve-Exhaust	276	692255	Sealing Washer
34	495857	Valve- Intake	287	94903	Screw (Dipstick Tube)
35	691279	Spring- Valve (Intake)	304	690844	Housing-Blower
36	691279	Spring- Valve (Exhaust)	305	690969	Screw (Blower Housing)
37	690456	Guard-Flywheel	306	690499	Shield, Cylinder
40	224641	Retainer- Valve	307	94930	Screw (Cylinder Shield)
43	490815	Governor-Oil Slinger	309	693551	Motor-Starter (For Steel Ring Gear Only)
45	690564	Tappet- Valve		497595	Motor-Starter (For Plastic Ring Gear Only)
46	692421	Camshaft			
48	692706	Short Block			
50	690193	Manifold- Intake			
51	273650	Gasket-Intake			
53	690227	Stud (Carburetor)			
54	691148	Screw (Intake Manifold)			
73	494439	Screen- Rotating			
74	691057	Screw (Rotating Screen)			
75	225136	Washer (Flywheel)			
78	94896	Screw (Flywheel Guard)			
93	690602	Bushing-Throttle Shaft			
94	498030	Valve-Idle Adjustment			
95	691636	● Screw (Throttle Valve)			
98	495800	Kit-Idle Speed			
104	690525	● Pin-Float Hinge			

RPM Settings: Low Speed: 1900-2100  
High Speed: 3000-3200

- ★ Included in Engine Gasket Set, Ref Number 358.
- Included in Carburetor Overhaul Kit, Ref Number 121.
- \* Included in Carburetor Gasket Set, Ref number 977.
- + Included in Value Overhaul Kit, Ref Number 1033.

**NOTE:** All component dimensions given in U.S. inches 1 inch = 25.4 mm

# REPAIR PARTS

## TRACTOR - - MODEL NUMBER 917.259060

### BRIGGS - MODEL NUMBER 310707, TYPE NUMBER 0136-E1

KEY PART NO.	NO.	DESCRIPTION	KEY PART NO.	NO.	DESCRIPTION
310	690323	Screw (Starter Motor)	759	691239	Pin-Counterweight
311	497608	Brush Set	761	691096	Screw (Counterweight)
318	692127	Screw (Mounting Bracket)	783	693713	Gear-Pinion (For Steel Ring Gear Only)
333	495859	Armature-Magneto	783A	693058	Gear-Pinion (For Plastic Ring Gear Only)
334	94731	Screw (Magneto Armature)	789	695050	Harness- Wiring
337	491055	Sparkplug	801	497626	Cap-Drive
344	693675	Screw (Casing Clamp)	802	497607	Cap-End
358	690189	Engine Gasket Set	803	497604	Housing-Starter
363	19203	Flywheel Puller	830	691095	Stud (Rocker Arm)
383	89838	Wrench-Spark Plug	842	270920	Dipstick/Tube Seal
404	94927	Washer (Governor Crank)	847	496415	Dipstick/Tube Assembly
423	692129	Screw (Air Cleaner Base)	851	692424	Sparkplug Terminal
445	496894	Filter- A/C Cartridge	868	499236	☆+ Seal-Valve
462	225137	Washer (Starter Cable)	871	262835	Bushing-Guide
467	493903	Knob-Air Cleaner	875	693686	Base- Air Cleaner
474	393474	Alternator	877	393456	Wire-Alternator
493	690493	Bracket-Mounting (Front)	914	690969	Screw (Rocker Cover)
493A	690494	Bracket-Mounting (Rear)	934	94627	Screw (Fan Retainer)
503	691532	Strap-Starter	947	497672	Solenoid-Fuel
505	691251	Nut (Governor Control Lever)	967	272403	Filter-Pre Cleaner
510	693699	Drive-Starter (Use With Steel Ring Gear Only)	968	281104	Cover- Air Cleaner
510A	497606	Drive-Starter (Use With Plastic Ring Gear Only)	975	495933	Bowl-Float
513	398003	Clutch-Drive	977	690192	Gasket Set-Carburetor
523	495230	Dipstick	987	691326	● Seal-Throttle Shaft
524	281370	☆ Dipstick Tube Seal	996	690678	Carburetor Shield
525	496113	Dipstick Tube	1005	281400	Fan-Flywheel
544	497603	Armature-Starter	1006	690452	Retainer-Fan
552	491986	Bushing-Gov. Lever	1019	690180	Label Kit
562	691119	Bolt (Governor Control Lever)	1022	272475	☆+ Gasket-Rocker Cover
579	92278	Nut (Starter Cable)	1023	691192	Cover-Rocker
601	95162	Clamp-Hose	1026	494432	Rod-Push (Intake)
614	93306	Pin-Cotter	1026A	495136	Rod-Push (Exhaust)
616	495157	Crank-Governor	1029	224554	Arm-Rocker
617	692138	☆+ O-Ring Seal (Intake Manifold)	1033	690190	Valve Overhaul Kit
634	690801	● Seal-Spring Assembly (Manual Choke)	1034	690822	Guide-Push Rod
634A	690802	● Seal-Spring Assy. (Choke A Matic)	1036	694497	Label-Emissions
635	280872	Boot- Spark Plug	1044	94673	Screw (Flywheel)
654	94010	Nut (Carburetor)	1051	263080	Ring-Retainer
667	94010	Nut (Air Cleaner Brace)	1058	274271	Owner's Manual
668	691500	Spacer	1090	497605	Retainer-Brush
691	491323	☆ Seal-Governor Shaft	1091	691333	Cap-Limiter
692	690572	Spring-Detent	1119	93621	Screw (Alternator)
695	693109	Screw (Ring Gear)	— —	311707-0028-E1	Replacement Engine
697	690372	Screw (Drive Cap)			
711	690703	Screw (Carburetor Shield)			
718	230192	Locating Pin			
726	399676	Gear- Ring (Aluminum-Services Plastic Ring Gear Only)			
727	490324	Cover- Starter Drive			
729	691224	Clip-Wire			
732	94903	Screw (Starter Drive Cover)			
741	691284	Gear-Timing			
757	213998	Link-Counterweight			
758	692423	Counterweight			

RPM Settings: Low Speed: 1900-2100  
High Speed: 3000-3200

- ☆ Included in Engine Gasket Set, Ref Number 358.
- Included in Carburetor Overhaul Kit, Ref Number 121.
- \* Included in Carburetor Gasket Set, Ref number 977.
- + Included in Value Overhaul Kit, Ref Number 1033.

**NOTE:** All component dimensions given in U.S. inches 1 inch = 25.4 mm