



REPAIR PARTS MANUAL
MODEL NO. 259140
Lawn Tractor

CRAFTSMAN®

HOW TO USE THIS MANUAL

This manual is designed to provide the customer with a means to identify the parts on his/her tractor when ordering repair parts. The illustrations may or may not represent the actual assemblies; therefore, it is not recommended to use this manual as a guide to assemble or disassemble the tractor. Some hardware and parts are drawn larger in order to more readily identify them.

Each tractor has its own model number.

The model number for your tractor can be found on the fender under the seat.

When ordering parts, always give the following information:

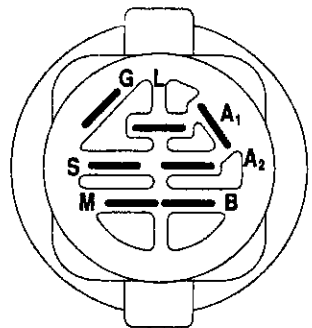
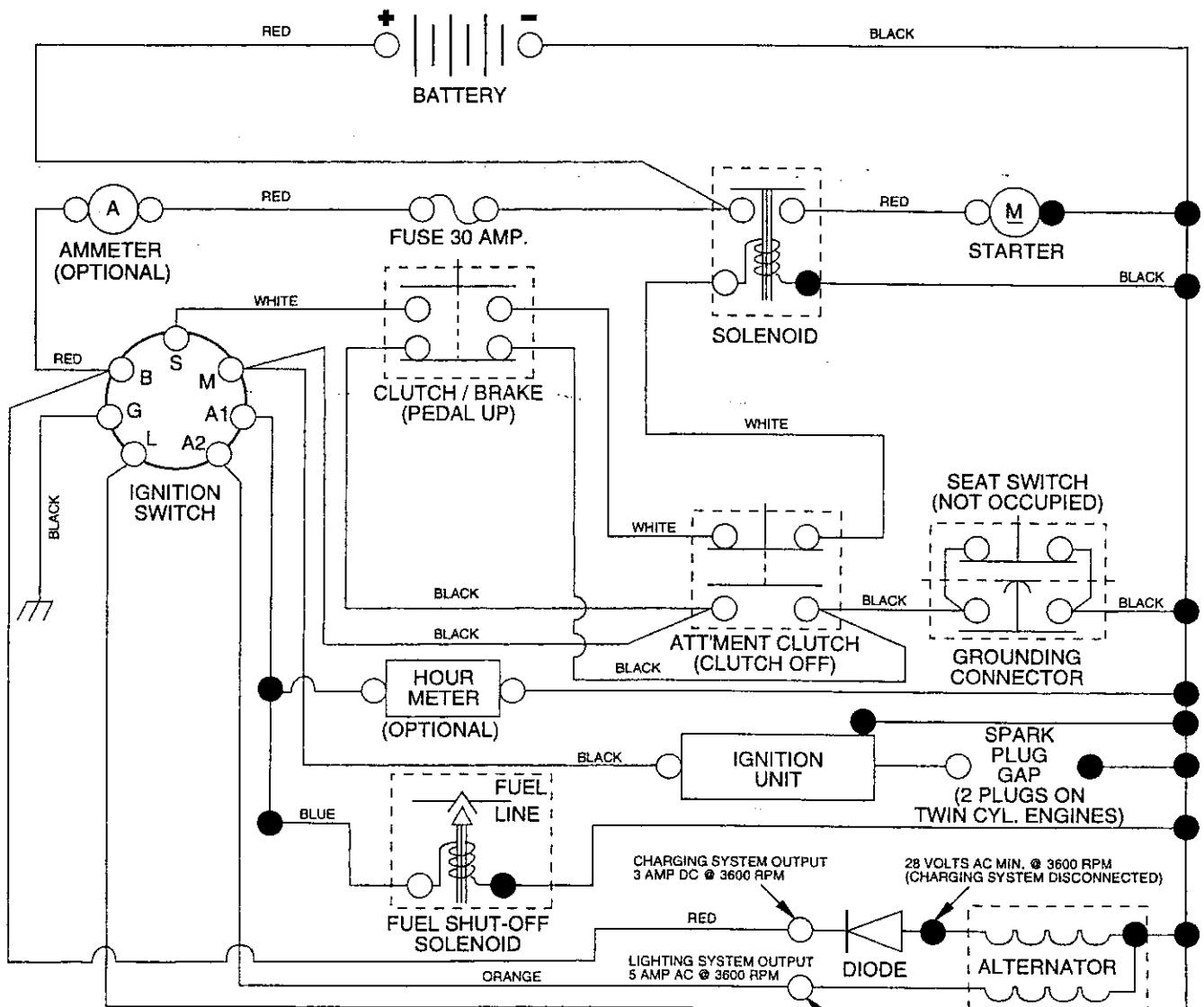
- Product - "Tractor"
- Model Number - "259140"
- Part Number
- Part Description

TABLE OF CONTENTS

SCHEMATIC	3
ELECTRICAL	4-5
CHASSIS	6-7
DRIVE	8-9
STEERING WHEEL	10-11
ENGINE	12-13
SEAT	14
DECALS	15
MOWER LIFT LEVER	16-17
MOWER DECK	18-19
TRANSAXLE	20-21

TRACTOR - - MODEL NUMBER 917.259140

SCHEMATIC



IGNITION SWITCH

POSITION	CIRCUIT	"MAKE"
OFF	M+G+A1	NONE
RUN/LIGHT	B+A1	A2+L
RUN	B+A1	NONE
START	B + S + A1	NONE

NOTE
YOUR TRACTOR IS EQUIPPED WITH A SPECIAL ALTERNATOR SYSTEM. THE LIGHTS ARE NOT CONNECTED TO THE BATTERY, BUT HAVE THEIR OWN ELECTRICAL SOURCE. BECAUSE OF THIS, THE BRIGHTNESS OF THE LIGHTS WILL CHANGE WITH ENGINE SPEED. AT IDLE THE LIGHTS WILL DIM. AS THE ENGINE IS SPEEDED UP, THE LIGHTS WILL BECOME THEIR BRIGHTEST.

WIRING INSULATED CLIPS

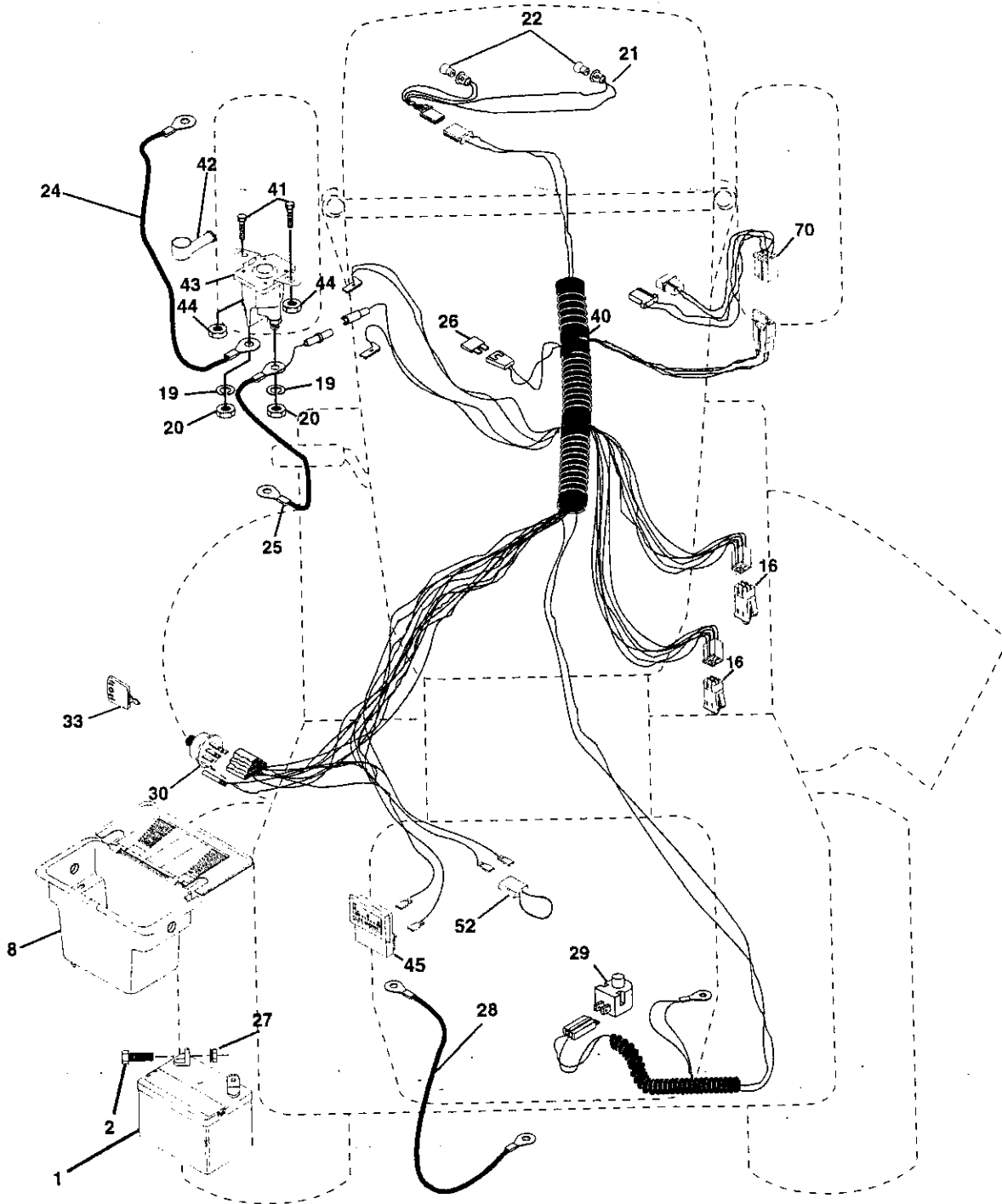
NOTE: IF WIRING INSULATED CLIPS WERE REMOVED FOR SERVICING OF UNIT, THEY SHOULD BE REPLACED TO PROPERLY SECURE YOUR WIRING.

NON-REMOVABLE CONNECTIONS REMOVABLE CONNECTIONS

REPAIR PARTS

TRACTOR - - MODEL NUMBER 917.259140

ELECTRICAL



REPAIR PARTS

TRACTOR - - MODEL NUMBER 917.259140

ELECTRICAL

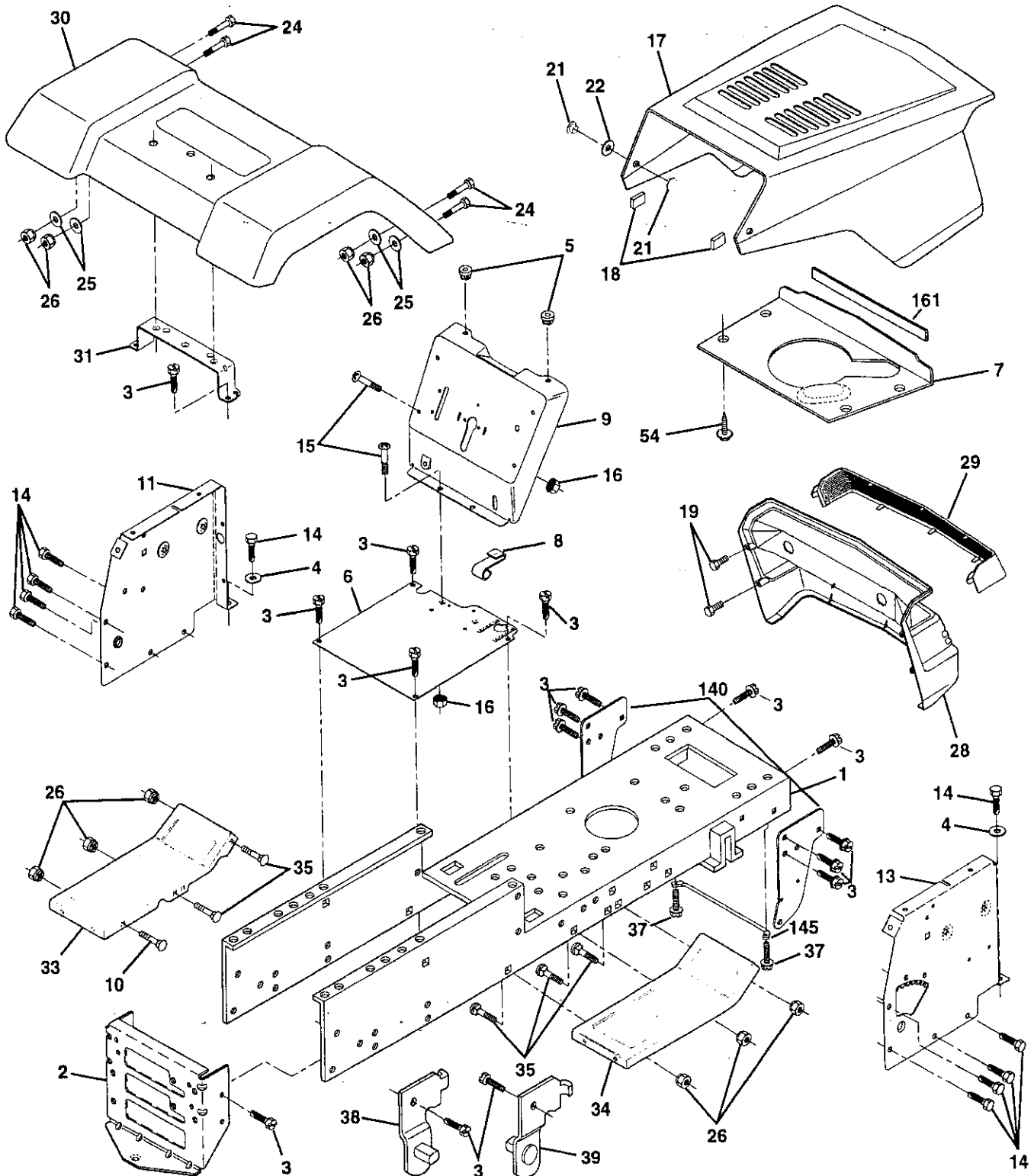
KEY NO.	PART NO.	DESCRIPTION
1	144925	Battery 12 Volt 25 AMP
2	74760412	Bolt Hex Hd 1/4-20unc X 3/4
8	156417	Case Battery
16	153664	Switch Interlock Push-In
19	STD551125	Washer Lock 1/4
20	73350400	Nut Jam Hex 1/4-20 Unc
21	166181	Harness Socket Light W/4152J
22	4152J	Bulb Light #1156
24	4799J	Cable Battery 6ga 11" red
25	146147	Cable Battery 6 Ga W/16 Wir red
26	166180	Fuse 15 AMP
27	73510400	Nut Keps Hex 1/4-20 Unc
28	4207J	Cable Ground 6ga 12" black
29	121305X	Switch Plunger Nc Gray
30	163968	Switch Ign
33	140403	Key Ign
40	166151	Harness Ignition
41	71110408	Bolt Blk Hex 1/4-20unc x 1/2
42	131563	Cover Terminal Red
43	145673	Solenoid
44	73640400	Nut Keps Blk Hex 1/4-20 Unc
45	121433X	Ammeter Rectangular 6 AMP
52	141940	Protection Wire Loop
70	166659	Harness Engine

NOTE: All component dimensions given in U. S. inches
1 inch = 25/4 mm

REPAIR PARTS

TRACTOR -- MODEL NUMBER 917.259140

CHASSIS AND ENCLOSURES



REPAIR PARTS

TRACTOR - - MODEL NUMBER 917.259140

CHASSIS AND ENCLOSURES

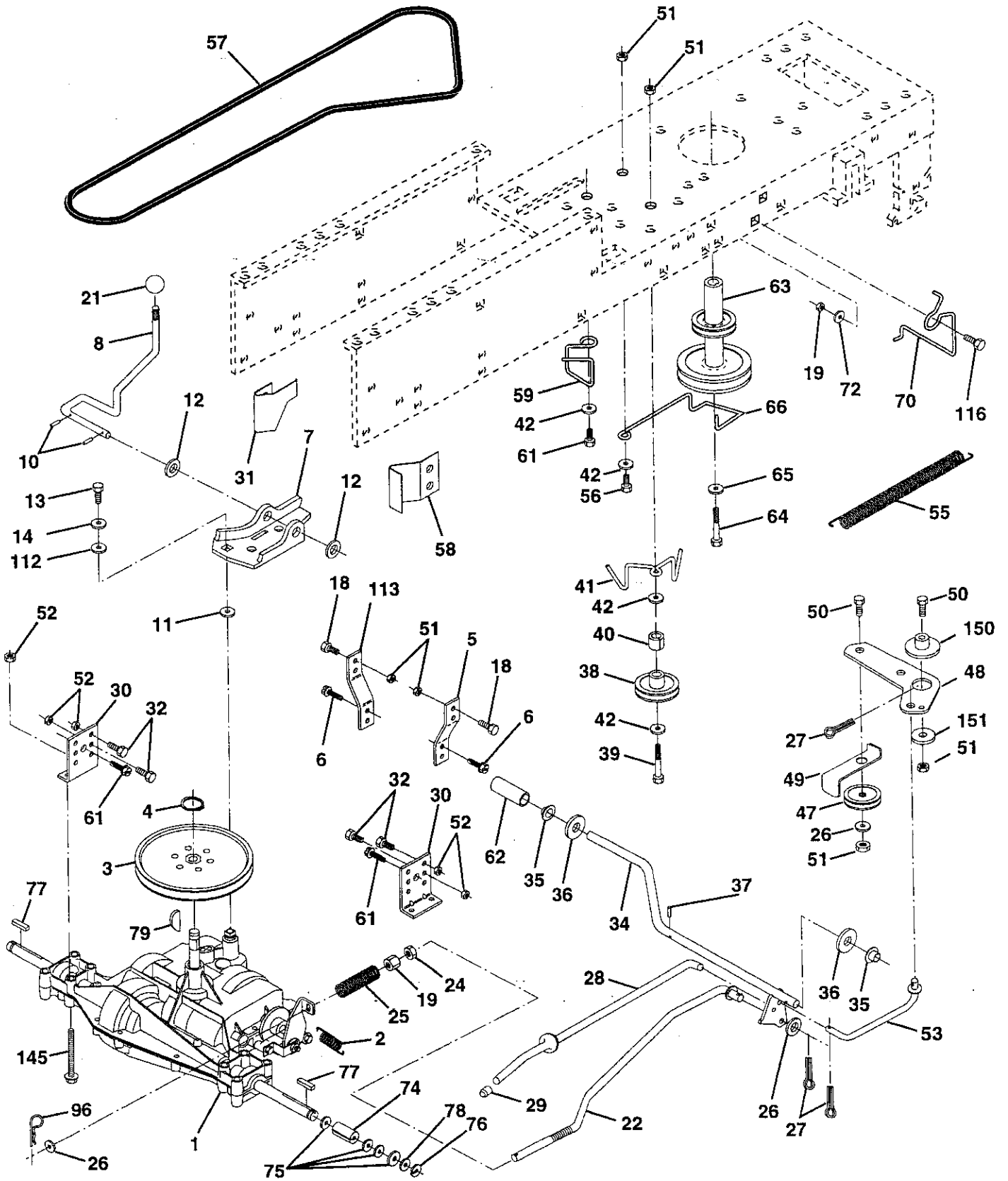
KEY NO.	PART NO.	DESCRIPTION
1	165480	Chassis
2	140356	Drawbar Stretch
3	17490612	Screw Thdrol 3/8-16 x 3/4 Ty-tt
4	STD551025	Washer 13/32 X 3/4 X 16 Ga
5	155272	Bumper Dash Hood
6	155924X012	Saddle Slkscr
7	126842X	Shield Ht. Hood Kohl/Dia Engine
8	155138	Clip Retainer Slide On
9	166322X011	Dash Slkscr 1-pc
10	STD533710	Bolt Rdhd Sqnk 3/8-16unc X 1
11	155927	Panel Dash LH
13	155934X010	Panel Slkscr Dash RH
14	17490608	Screw Thdrol 3/8-16 x 1/2 Ty-tt
15	74180512	Screw Mach TRHD 5/16-18 unc x 3/4
16	STD541431	Nut Keps 5/16-18 Unc
17	154989X558	Hood Asm
18	126938X	Bumper Hood
19	17411310	Screw Hex Wsh #13-16 Hi-Lo x 5/8
21	122933X	Rivet Ratchet Nylon
22	124479X	Washer Nylon Blk 28 x 75 x 19
24	STD523710	Bolt Fin Hex 3/8-16 unc x 1 Gr. 5
25	19131312	Washer 13/32 X 13/16 x 12 Ga
26	STD541437	Nut Hex Lock W/Ins. 3/8-16 Unc
28	140135X428	Grille Black
29	124029X599	Lens Headlight Bar Clear
30	157584X558	Fender Pnt LT W/o Shift
31	136619	Bracket Fender Repl 109873x
33	145244X558	Footrest Pnt Lh
34	145243X558	Footrest Pnt Rh
35	STD533707	Bolt Rdhd Sht Sqnk 3/8-16 x 3/4
37	17490508	Screw Thdrol. 5/16-18 x 1/2
38	139886	Bracket Asm Pvt LH MWR Rear
39	139887	Bracket Asm Pvt RH MWR Rear
54	161464	Screw Hex Wshd 8-18 x 7/8
140	158418	Bracket Suspension Front
145	156524	Rod Pivot Chassis/Hood
161	161547	Extrusion Hood
--	5479J	Plug Button Blk 359 Dia Choke

NOTE: All component dimensions given in U. S. inches
1 inch = 25.4 mm

REPAIR PARTS

TRACTOR -- MODEL NUMBER 917.259140

DRIVE



REPAIR PARTS

TRACTOR - - MODEL NUMBER 917.259140

DRIVE

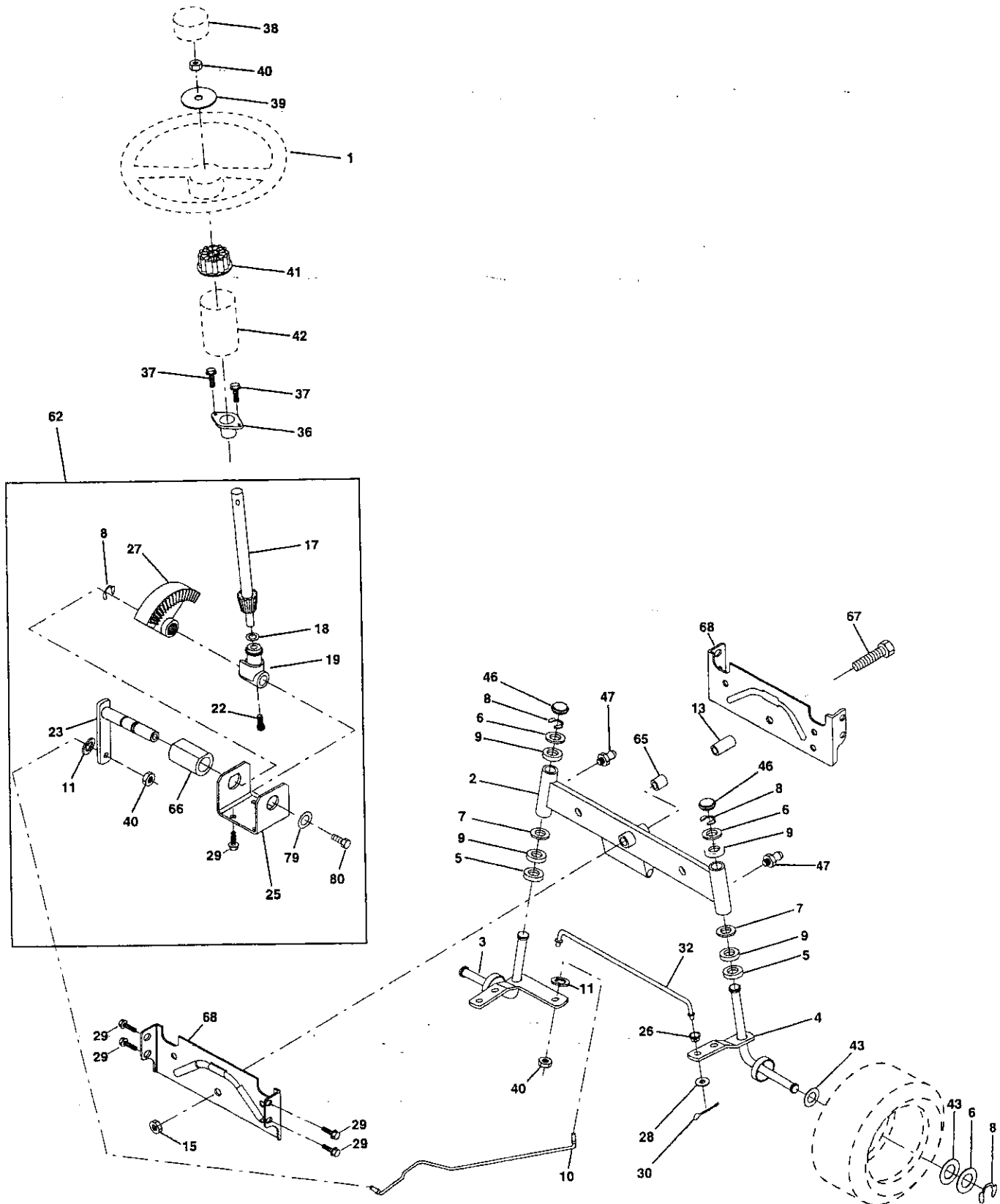
KEY NO.	PART NO.	DESCRIPTION	KEY NO.	PART NO.	DESCRIPTION
1	----	Transaxle (See Breakdown)	48	154407	Bellcrank Clutch Grn Drv Stl
2	146682	Peerless Model 206-545C	49	123205X	Retainer Belt Style Spring
3	123666X	Spring Return Brake T/a Zinc	50	STD523715	Bolt Hex Hd 3/8-16unc x 1-1/2
4	12000028	Pulley Transaxle 18/20" tires	51	STD541437	Nut Crownlock 3/8-16 UNC
5	121520X	Ring Retainer # 5100-62	52	STD541431	Nut Crown Lock 5/16-18
6	121520X	Strap Torque 30 Degrees	53	105710X	Link Clutch 7 66
7	17490512	Screw Thdrol 5/16-18 x 3/4 TYT	55	105709X	Spring Return Clutch 6 75
8	162240	Bracket Saddle Shift T/a	56	STD523712	Bolt Fin Hex 3/8-16 unc x 1-1/4
10	131679	Rod Shf Sdl LY/YT Str Blk Zinc	57	130801	V-Belt Gd Drive 95 00
11	STD561210	Pin Cotter 1/8 x 1 Cad	58	127274X	Keeper Belt RH LT Pnt/zinc 16g
12	105701X	Washer Plate Shf 388 Sq Hole	59	140312	Keeper Belt Centerspan
13	19151216	Washer 15/32 x 3/4 x 16ga	61	17490612	Screw Thdrol 3/8-16 x 3/4 Ty-tt
14	74550412	Bolt 1/4-28unf Gr8 W/Patch	62	8883R	Cover Pedal Blk Round
18	STD551125	Washer Lock Hvy Helical 1/4	63	140186	Pulley Eng Cl Mech 38deg LT/YT
19	STD523710	Bolt Fin Hex 3/8-16 Unc x 1 Gr 5	64	71170764	Bolt Hex 7/16-20 x 4 Gr 5
21	STD541437	Nut Lock Hex W/Ins. 3/8-16 Unc	65	STD551143	Washer Lock Hvy Hlcl Spr 7/16
22	106933X	Knob Rd 1/2-13 Plstc Thds Blk	66	154778	Keeper Belt Engine
24	130804	Rod Brake Blk Zinc 26 840	70	134683	Guide Belt Mower Drive RH
25	STD541237	Nut Hex Jam 3/8-16 Unc	72	19132012	Washer 13/32 x 1-1/4 x 12 Ga
26	106888X	Spring Rod Brake 2 00 Zinc	74	137057	Spacer Axle
27	STD551037	Washer 13/32 x 13/16 x 16 Ga	75	121749X	Washer 25/32 x 1 1/4 x 16 Ga
28	STD561210	Pin Cotter 1/8 x 3/4 Cad	76	STD581075	E-ring #5133-75
29	145204	Rod Brake Parking Lt/Yt	77	123583X	Key Square 2 0 x 1845/ 1865
30	124236X	Cap Brake Parking Red	78	121748X	Washer 25/32 x 1-5/8 x 16ga
31	130807	Bracket Mtg Transaxle	79	2228M	Key Woodruff #9 3/16 x 3/4
32	127275X	Keeper Belt LH LT 14 Ga	96	4497H	Retainer Spring 1"
33	STD523107	Bolt Hex Hd 5/16-18unc x 3/4	112	19091210	Washer 9/32 x 3/4 x 10 Ga
34	155071	Shaft Asm Pedal Foot	113	127285X	Strap Torque Lh Lt
35	120183X	Bearing Nylon Blk 629 Id	116	72110610	Bolt Rdhd Sq Neck 3/8-16 x 1.25
36	STD551062	Washer 21/32 x 1 x 16 Ga	145	74490540	Bolt Hex FLGHD 5/16-18Gr.5
37	STD571810	Pin Roll 3/16 x 1"	148	159103	Spacer
38	131494	Pulley Idler Flat	149	122052X	Spacer Retainer PM Mower
39	STD523727	Bolt Fin Hex 3/8-16unc x 2-3/4	150	165850	Bushing Bellcrank Grd Drive
40	4470J	Spacer Split 395 x 59 Bzp	151	19133210	Washer 13/32 x 2 x 10 Ga
41	165838	Keeper Belt Idler			
42	19131312	Washer 13/32 x 13/16 x 12 Ga			
47	127783	Pulley Idler V Groove Plastic			

NOTE: All component dimensions given in U. S. inches
1 inch = 25.4 mm

REPAIR PARTS

TRACTOR - - MODEL NUMBER 917.259140

STEERING ASSEMBLY



REPAIR PARTS

TRACTOR - - MODEL NUMBER 917.259140

STEERING ASSEMBLY

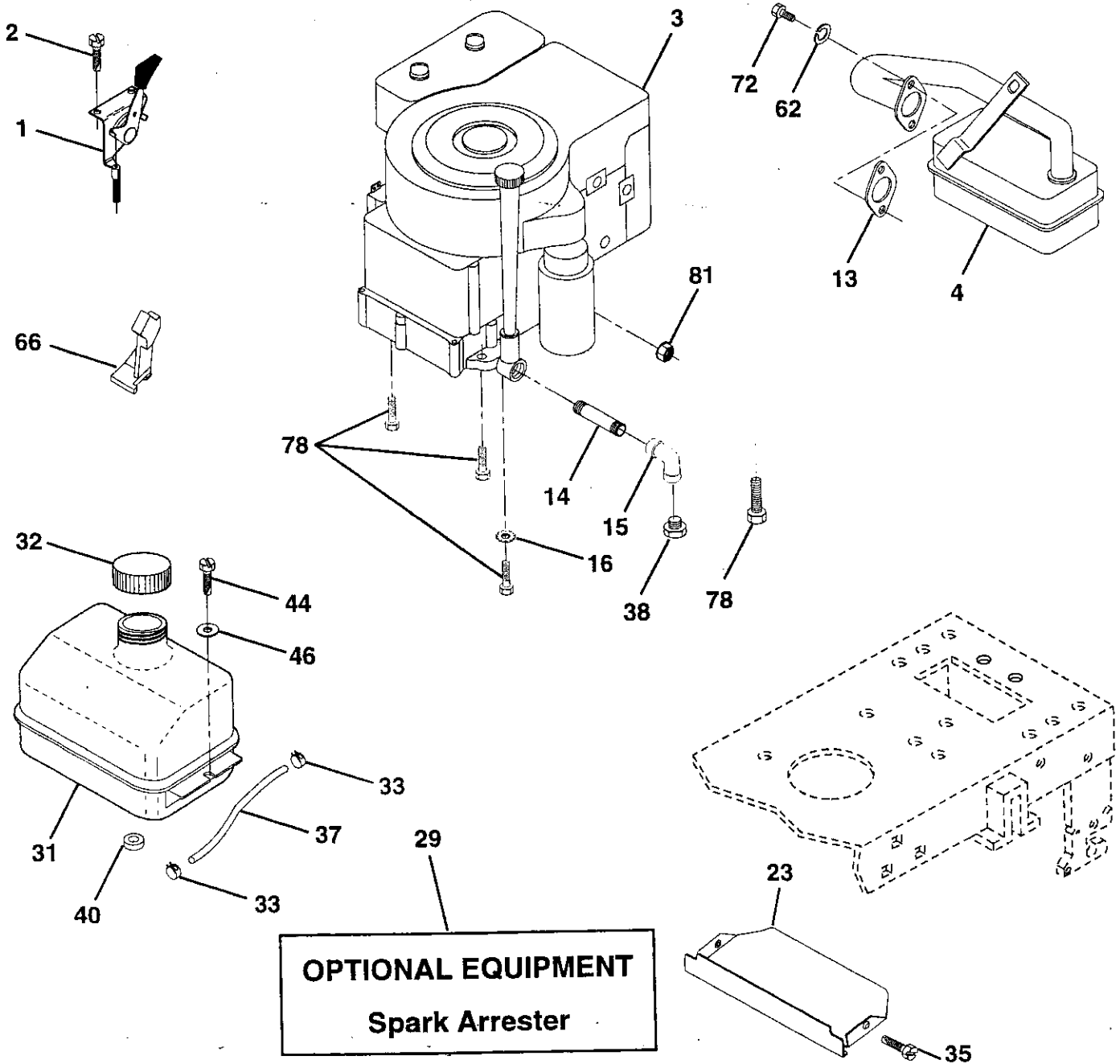
KEY NO.	PART NO.	DESCRIPTION
1	139768	Wheel Steering Opp Sears Blk
2	154427	Axle Asm Front Lt
3	156483	Spindle Asm Lh
4	157473	Spindle Asm Rh
5	6266H	Washer Thrust .75 x 1.230
6	121748X	Washer 25/32 x 1-5/8 x 16 Ga.
7	19272016	Washer 27/32 x 1-1/4 x 16 Ga.
8	12000029	RingKlip #T5304-75
9	3366R	Bearing Col Strg Blk
10	156438	Draglink Extended Stamped
11	10040600	Washer Lock Hvy Hlcl Spr 3/8
13	154779	Bearing Axle
15	73901000	Locknut Flange 5/8-11 UNC
17	156545	Shaft Asm Strg 5/8 x 15.19 Lt
18	57079	Washer Thrust .515 x .750 x .033
19	160395	Support Shaft
22	165857	Screw Hex Wsh hd Torx
23	165851	Shaft Asm Pitman
25	154406	Bracket Steering
26	126847X	Bushing Link Drag Blk LR
27	136874	Gear Sector 22 Teeth
28	19131416	Washer 13/32 x 7/8 x 16 Ga.
29	17490612	Screw Thdrol 3/8-16 x 3/4 TY-TT
30	STD561210	Pin Cotter 1/8 x 3/4 Cad
32	130465	Rod Tie Wire Form 19.75 Mech
36	155099	Bushing Strg. 5/8 ID Dash
37	152927	Screw
38	139769	Cap Wheel Steer Opp Sears USA
39	19133808	Washer 13/32 x 2-3/8 x 8 Ga.
40	STD541537	Locknut Center 3/8-24 Unf
41	104820X	Adaptor Wheel Strg. .640/.635 Id
42	124417X	Boot Shaft Steering Craftsman
43	121749X	Washer 25/32 x 1-1/4 x 16 Ga.
46	121232X	Cap Spindle Fr Top Blk
47	6855M	Fitting Grease
62	167903	Steering Assembly
65	154780	Spacer Axle
66	154404	Bearing Arm Pittman
67	74781044	Bolt Fin Hex 5/8-11 UNC x 2-3/4
68	154429	Brace Axle
79	19132012	Washer 13/32 x 1-1/4 x 12 Ga
80	74950612	Bolt Hex Nylon 3/8-16 x 3/4

NOTE: All component dimensions given in U.S. inches
1 inch = 25.4 mm

REPAIR PARTS

TRACTOR - - MODEL NUMBER 917.259140

ENGINE



REPAIR PARTS

TRACTOR - - MODEL NUMBER 917.259140

ENGINE

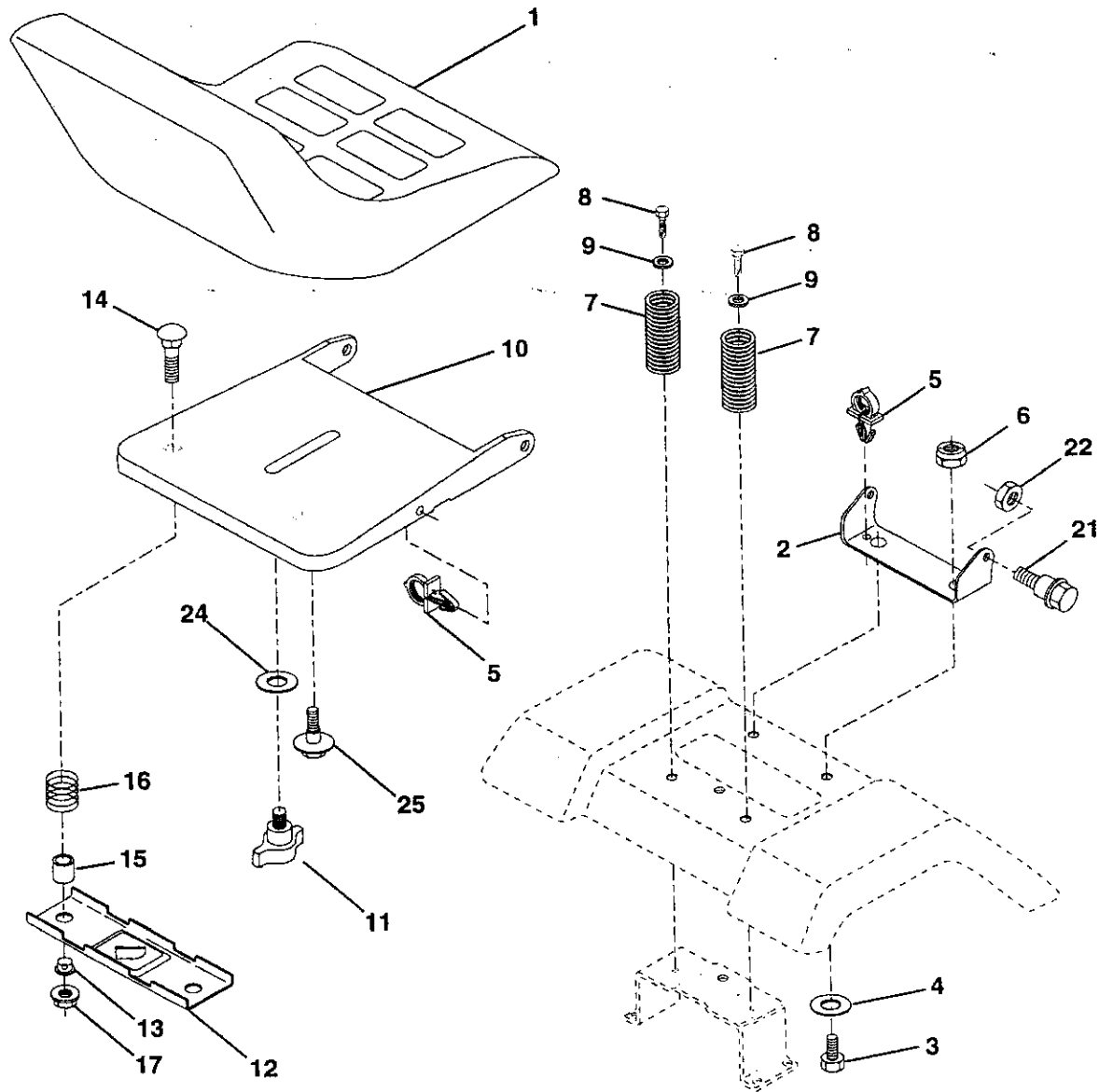
KEY NO.	PART NO.	DESCRIPTION
1	162155	Control Th/ch
2	17720410	Screw Hex Thd Cut 1/4-20x5/8 T
3	-----	Engine (See Breakdown) Briggs, Model No 287707-1255-E1
4	137352	Muffler Exh LT B&S 14HP IC OHV
13	165291	Gasket Eng 1 313 Id Tin Plated
14	13280324	Nipple Pipe 3/8 Npt x 3"
15	13200300	Elbow Std 90 Degree 3/8-18 Npt
16	STD551237	Washer Lock Ext Tooth 3/8
23	159880	Shield Browning/Debris Guard
29	137180	Kit Spark Arrestor (Flat Scrn)
31	109202X	Tank Fuel Front 1 25
32	158990	Cap Asm Fuel Sears Vented
33	123487X	Clamp Hose Blk
35	17490512	Screw Thdrol 5/16-18 x 3/4 TYT
37	137040	Line Fuel 20"
38	-----	Plug Oil Drain (Order From Engine Manufacturer)
40	124028X	Bushing Snap Nyi Blk Fuel Line
44	17490412	Screw Hexwsh Thdrol 1/4-20 x 3/4
46	19091416	Washer 9/32 x 7/8 x 16 ga
62	STD551131	Washer Lock Hvy Hlcl Spr 5/16
66	127951	Stop Throttle
72	71070512	Screw Hex Hd Cap 5/16-18 X 3/4
78	17490620	Screw Thdrol 3/8-16x1-1/4 TYTT
81	128861	Nut Flange 1/4-20 Starter Nut

NOTE: All component dimensions given in U. S. inches
1 inch = 25.4 mm

REPAIR PARTS

TRACTOR - - MODEL NUMBER 917.259140

SEAT ASSEMBLY



KEY NO.	PART NO.	DESCRIPTION
1	140122	Seat
2	140551	Bracket Pvt St
3	STD523710	Bolt Fin Hex 3/8-16unc X 1.
4	19131610	Washer Flat 13/32 X 1 X 10 Ga
5	145006	Clip Push-In Hinged
6	STD541437	Locknut Hex W/Wsh 3/8-16
7	124181X	Spring Seat Cprsn 2 250 Blk Zi
8	17490616	Screw Thdrol 3/8-16 X 1 Ty-tt
9	19131614	Washer 13/32 X 1 X 14 Ga
10	155925	Pan Seat
11	166369	Knob Seat Adj Wingnut
12	121246X	Bracket Mounting Switch

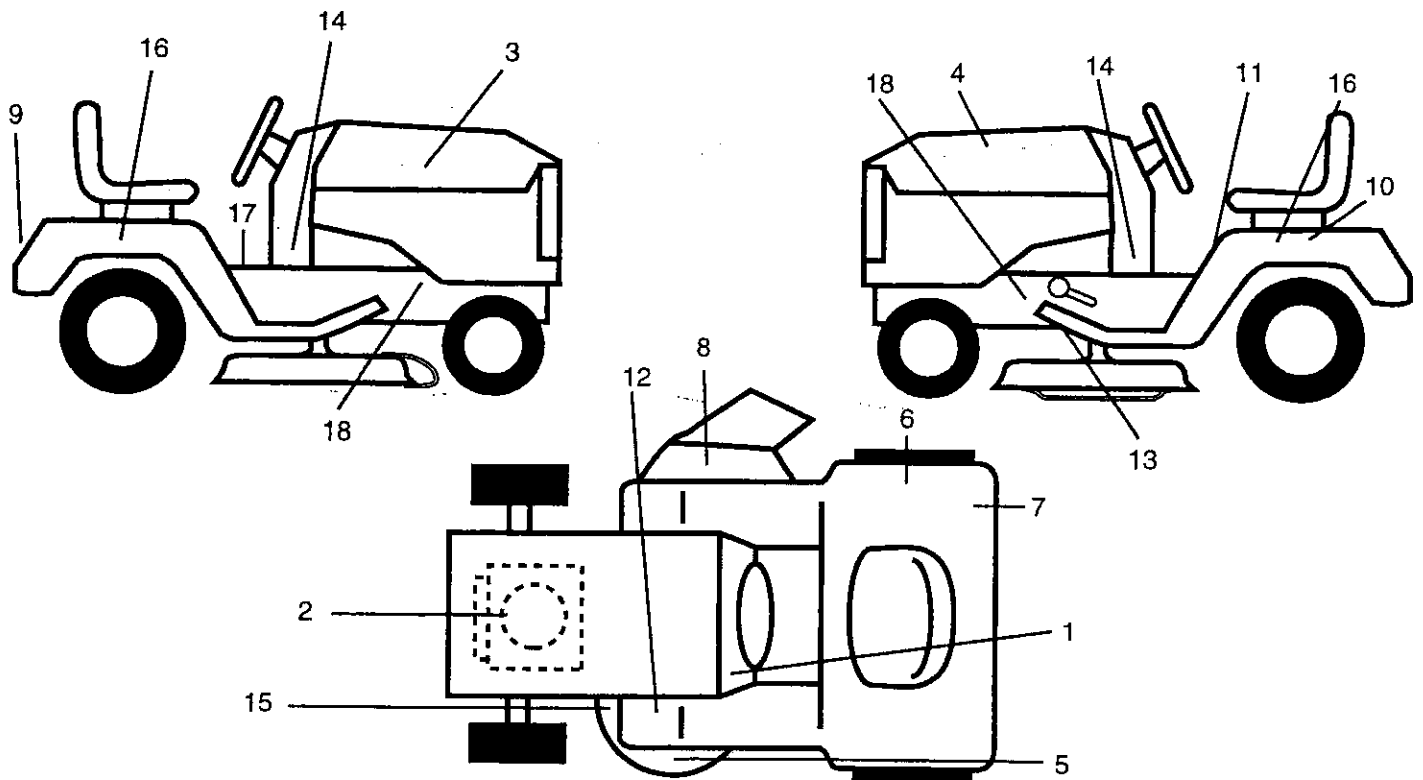
KEY NO.	PART NO.	DESCRIPTION
13	121248X	Bushing Snap Blk Nyl 50 Id
14	72050412	Bolt Rdhd Sht Nk 1/4-20x1-1/2
15	134300	Spacer Split 28x 96 Yel Zinc
16	121250X	Spring Cprsn 1 27 Blk Prt
17	123976X	Nut Lock 1/4 Lge Flg Gr 5 Zinc
21	153236	Bolt Shld 5/16-18 Unc
22	STD541431	Nut Lock Hex "W/Ins 5/16-18
24	19171912	Washer 17/32 X 1-3/16 X 12 Ga
25	127018X	Bolt Shoulder 5/16-18 X 62

NOTE: All component dimensions given in U.S. inches
1 inch = 25.4 mm

REPAIR PARTS

TRACTOR -- MODEL NUMBER 917.259140

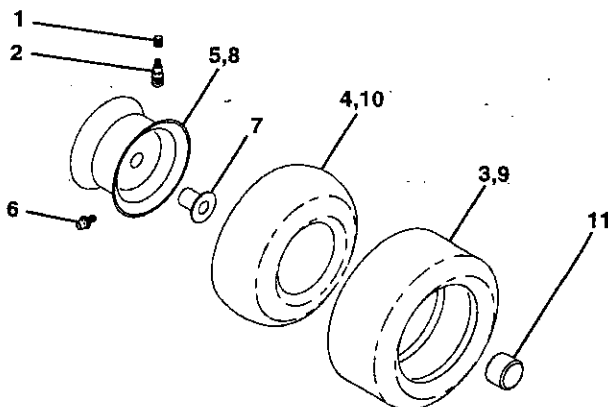
DECALS



KEY NO.	PART NO.	DESCRIPTION
1	156867	Decal Dash Inst Oper English
2	165393	Decal HP Engine
3	163990	Decal Hood RH
4	163991	Decal Hood LH
5	133179	Decal Mower QC System
6	145437	Decal Europe Stand CE
7	126187X	Decal Certification
8	145494	Decal Cutfinger
9	163204	Decal Fender Craftsman White
10	145005	Decal Battery Dngr/Psn
11	145498	Decal Read Owner's Manual
12	159737	Decal Clutch/brake Symbol
13	146046	Decal V-Belt Dr Sch Tractor

KEY NO.	PART NO.	DESCRIPTION
14	163249	Decal Panel Dash 6sp 42"
15	160396	Decal V-Belt Sch
16	163209	Decal Fender Sd 6/42
17	140837	Decal Brake Parking Saddle
18	159736	Decal Chassis Hot Muffler
--	157199	Pad Footrest
--	138311	Decal Handle Lft Height Adjust
--	162598	Decal Drawbar Load Limit
--	168773	Manual Oper Euro
--	168774	Manual Oper Scand
--	168775	Manual Parts

WHEELS AND TIRES



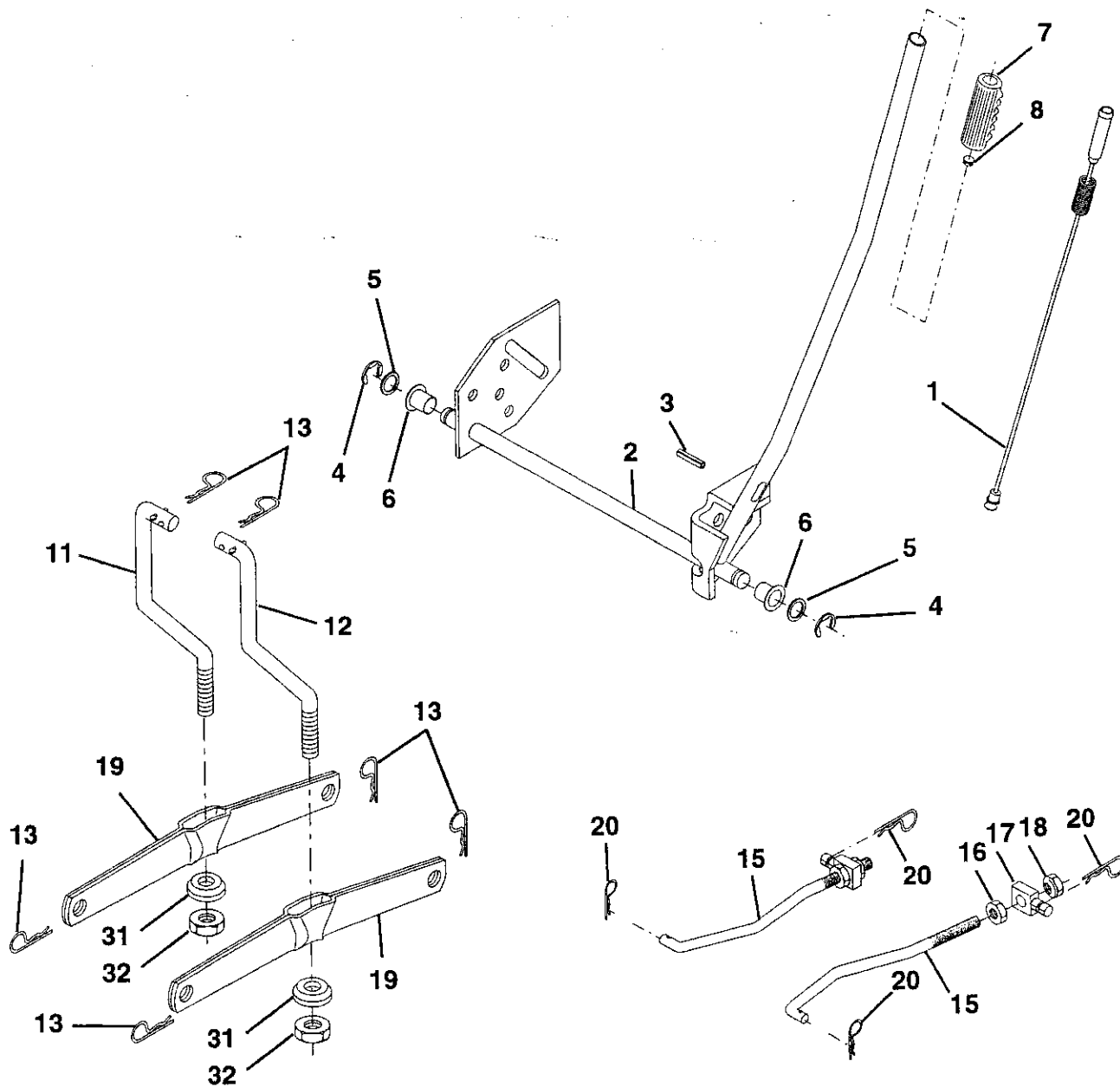
KEY NO.	PART NO.	DESCRIPTION
1	59192	Cap Value Tire
2	65139	Stem Value
3	106222X	Tire F Ts 15 X 6 0 - 6 Service
4	59904	Tube Inner Front #35060
5	106732X427	Rim Asm 6"front White Service
6	278H	Fitting Grease
7	9040H	Bearing Flange
8	106108X427	Rim Asm 8"rear White Service
9	106268X	Tire R Ts 18x9 5-8 Service
10	7152J	Tube Rear 9 5 X 8 Service
11	104757X	Cap Axle Blk 1 50 X 1 00
--	144334	Sealant, Tire (10 oz. tube)

NOTE: All component dimensions given in U.S. inches
1 inch = 25.4 mm

REPAIR PARTS

TRACTOR - - MODEL NUMBER 917.259140

MOWER LIFT



REPAIR PARTS

TRACTOR - - MODEL NUMBER 917.259140

MOWER LIFT

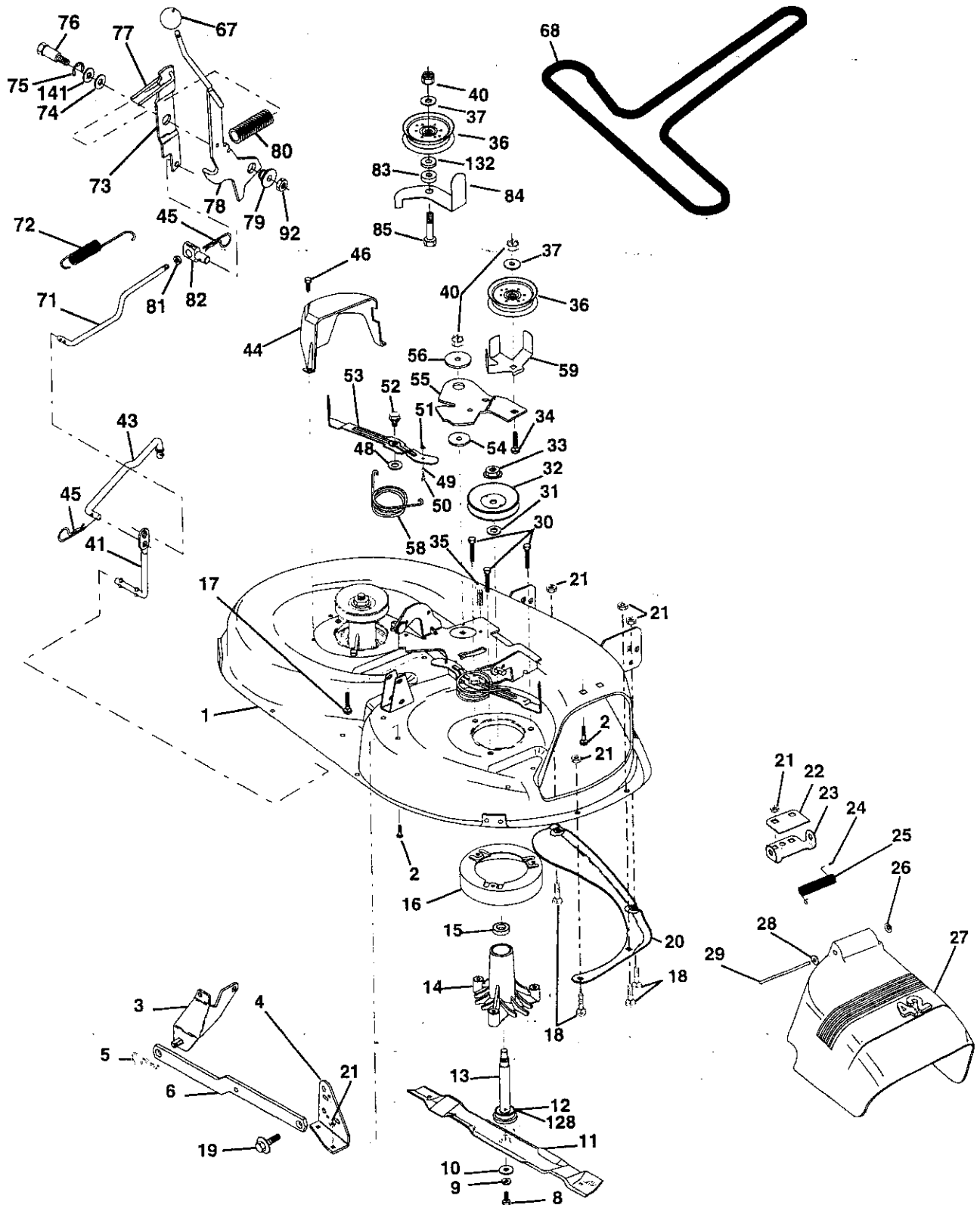
KEY NO.	PART NO.	DESCRIPTION
1	159460	Wire Asm Inner/Sprg W/plunger LT
2	159474	Shaft Asm Lift
3	105767X	Pin Groove 1 500 Zinc
4	12000002	E Ring #5133-62
5	19211621	Washer Pltd 21/32 X 1 X 21ga
6	120183X	Bearing Nylon Blk 629 Id
7	125631X	Grip Handle Fluted Blk
8	122365X	Button Plunger Red
11	139865	Link Lift LH
12	139866	Link Lift RH
13	STD624008	Retainer Spring
15	127218	Link Front
16	73350800	Nut Jam Hex 1/2-13 Unc
17	130171	Trunnion Blk Zinc
18	73680800	Nut Crownlock 1/2-13unc
19	139868	Arm Suspension Rear
20	163552	Retainer Spring Zinc
31	140302	Bearing Pvt Lift Spherical
32	73540600	Nut Crownlock 3/8-24

NOTE: All component dimensions given in U. S. inches
1 inch = 25.4 mm

REPAIR PARTS

TRACTOR - - MODEL NUMBER 917.259140

MOWER DECK



REPAIR PARTS

TRACTOR - - MODEL NUMBER 917.259140

MOWER DECK

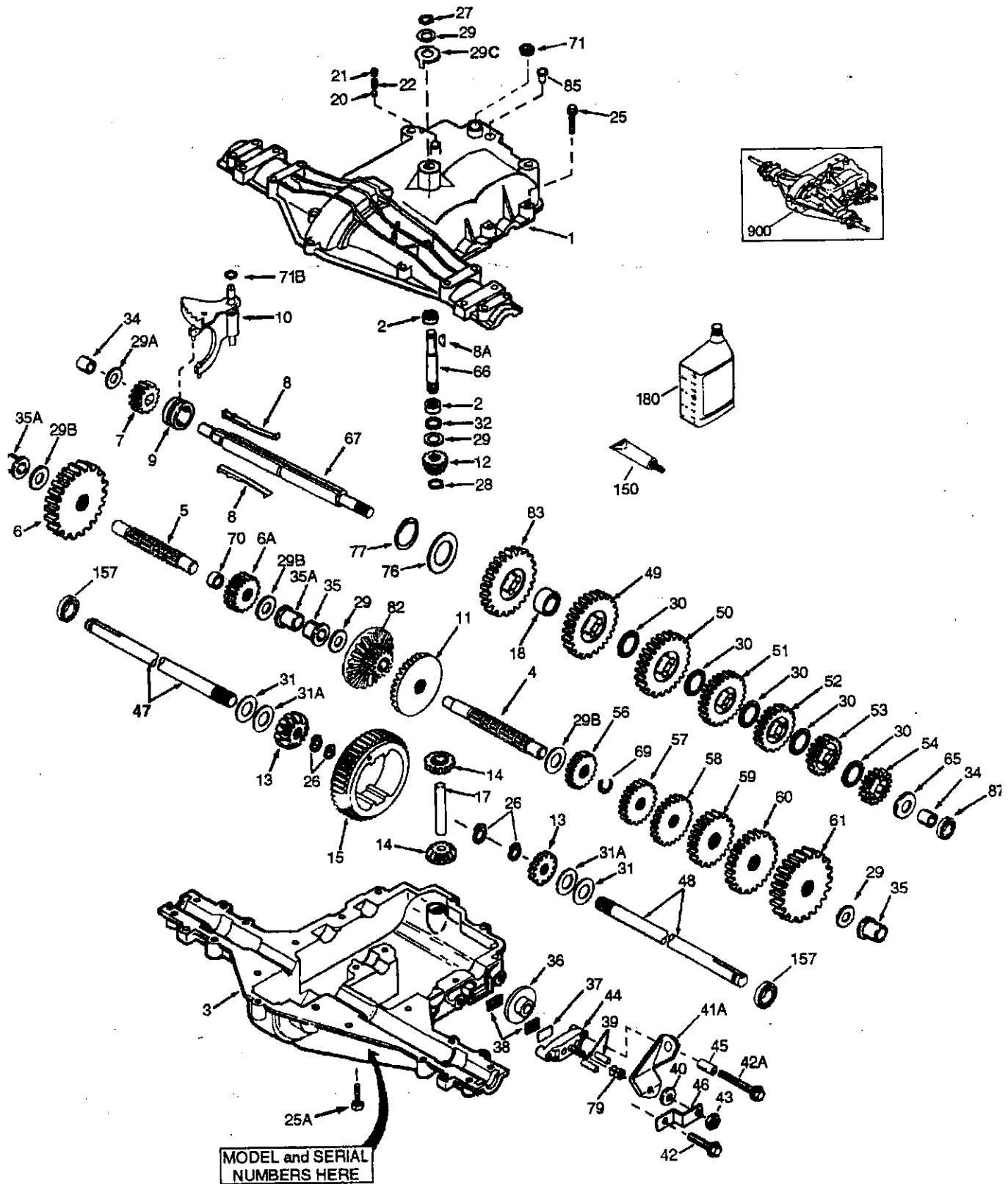
KEY NO.	PART NO.	DESCRIPTION	KEY NO.	PART NO.	DESCRIPTION
1	164961	Mower Housing	48	133944	Washer, Hardened
2	STD533107	Bolt	49	155066	Roller Assembly, Cam Follower
3	138017	Bracket Assembly, Sway Bar, Front	50	131340	Bolt, Shoulder #10-24 Grade 5
4	138440	Bracket Assembly, Sway Bar	51	STD541410	Locknut
5	STD624008	Retainer Spring	52	139888	Bolt, Shoulder 5/16-18 UNC
6	130832	Arm, Suspension, Rear	53	131845	Arm Assembly, Pad, Brake
8	850857	Bolt, Hex 3/8-24 x 1.25 Gr. 8	54	133943	Washer, Hardened
9	STD551137	Washer, Lock	55	155046	Arm, Idler
10	140296	Washer, Hardened	56	122052X	Spacer, Retainer
11	134149	Blade, Mulching	58	140086	Spring, Torsion Brakes
12	129895	Bearing, Ball	59	141043	Guard, TUV Idler
13	137645	Shaft Assembly, Mandrel, Vented (Includes Key No. 6)	67	162113	Knob Custom Oval
14	128774	Housing, Mandrel, Vented	68	144200	V-Belt
15	110485X	Bearing, Ball, Mandrel	71	142427	Rod, Clutch, Primary, with Nibs
16	140329	Stripper, Vented Mower Deck	72	131870	Spring, Return
17	72110610	Bolt, Carriage 3/8-16 x 1-1/4	73	127847	Arm, Clutch, Secondary
18	72140505	Bolt, Carriage 5/16-18 x 5/8	74	121748X	Washer 25/32 x 1-5/8 x 16 Ga.
19	132827	Bolt, Shoulder	75	12000029	Ring, Klip
20	159770	Baffle, Vortex	76	128903	Bolt, Shoulder 3/8-16 UNC x 1.44
21	STD541431	Nut Crownlock 5/16-18 UNC	77	127845	Keeper, Spring
22	134753	Stiffener Bracket	78	160571	Lever Asm. Clutch Pri Plm STLT
23	131267	Bracket, Deflector	79	127498	Bushing, Large, Brass
24	105304X	Cap, Sleeve	80	153701	Spring, Mower Clutch
25	123713X	Spring, Torsion, Deflector	81	73350600	Nut, Hex Jam 3/8-16 Unc
26	110452X	Nut, Push	82	142028	Trunnion, Adj.
27	130968	Shield, Deflector	83	120958X	Washer Sintered
28	19111016	Washer 11/32 x 5/8 x 16 Ga.	84	156084	Keeper Belt Idler
29	131491	Rod, Hinge	85	72140620	Bolt Carriage 3/8-16 x 2-1/2
30	157722	Screw Thdrol Washer Head	92	STD541437	Nut
31	129963	Washer, Spacer	128	153390	Washer Felt
32	153535	Pulley, Mandrel	132	19132203	Spacer, Washer 13/32 I.D. x 1-3/8 O.D. x 1/4
33	137266	Nut, Toplock, Flanged	141	6266H	Washer Thrust .75 x 1.230
34	STD533717	Bolt	--	130794	Mandrel Assembly (Includes Key Numbers 8-10, 12-15, 31 and 32)
35	133835	Fastner, Christmas Tree	--	164963	Mower Deck, Complete (Standard Deck, Order Separately Mulcher Plate and Gauge Wheel Components, Key Nos. 101-106 and 111-121)
36	131494	Pulley, idler, Flat			
37	19131316	Washer 13/32 x 13/16 x 16 Ga.			
40	STD541437	Nut Crownlock 3/8-16 UNC			
41	133551	Rod, Pivot, with Nibs			
43	140083	Rod, Clutch, Secondary, w/Nibs			
44	140088	Guard, Mandrel, L.H.			
45	STD624003	Retainer			
46	137729	Screw, Thd. Roll 1/4-20 x 5/8			

NOTE: All component dimensions given in U.S. inches
1 inch = 25.4 mm

REPAIR PARTS

TRACTOR -- MODEL NUMBER 917.259140

PEERLESS TRANSAXLE - MODEL NUMBER 206-545C



REPAIR PARTS

TRACTOR - - MODEL NUMBER 917.259140

PEERLESS TRANSAXLE - MODEL NUMBER 206-545C

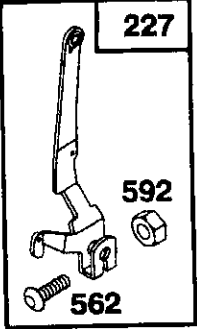
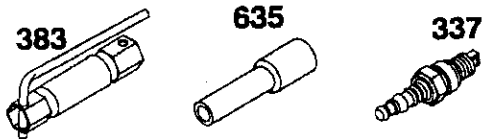
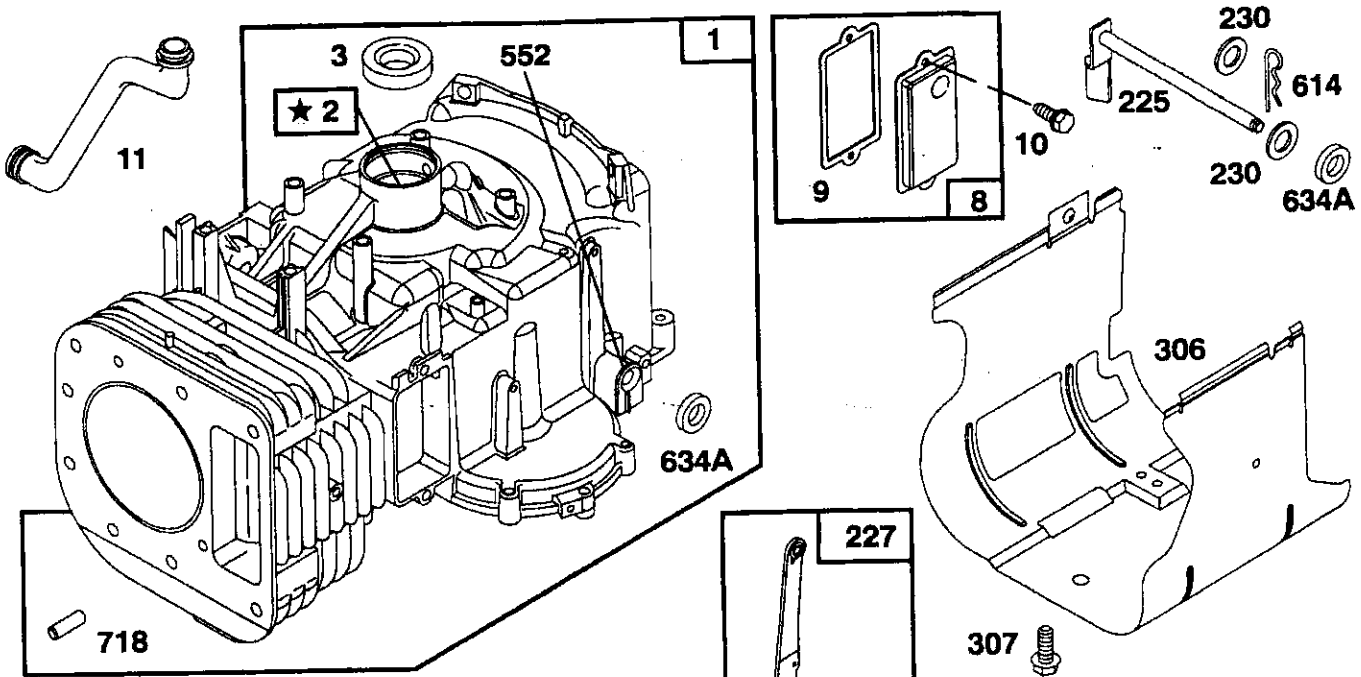
KEY NO.	PART NO.	DESCRIPTION	KEY NO.	PART NO.	DESCRIPTION
1	772147	Transaxle Cover	41A	790079	Brake Lever
2	780086A	Needle Bearing 5/8"	42	792073A	Screw 1/4 - 20 x 1-1/4"
3	770128	Transaxle Case	42A	792085A	Screw 1/4 - 20 x 2 1/4"
4	776395	Countershaft	43	792075	Locknut 5 / 16 - 24
5	776409	Output Shaft	44	790025	Brake Pad Holder
6	778364	Spur Gear (38 teeth)	45	786066	Spacer .2625 x 1.0
6A	778369	Spur Gear (15 teeth)	46	786086	Brake Lever Bracket
7	778330	Spur Gear (11 teeth)	47	774690	Axle (11-15 / 16" Long)
8	792180	Shift Key	48	774691	Axle (16 - 1 / 2" long)
8A	792047	Woodruff Key #9	49	778356	Spur Gear (29 teeth)
9	784352	Shift Collar	50	778338	Spur Gear (27 teeth)
10	784378	Shift Rod & Fork	51	778354	Spur Gear (23 teeth)
11	778334	Bevel Gear (30 teeth)	52	778352	Spur Gear (19 teeth)
12	778309	Input Bevel Pinion (13 teeth)	53	778350	Spur Gear (16 teeth)
13	778368	Bevel Gear (13 teeth) (Include. 14)	54	778346	Spur Gear (15 teeth)
14	778368	Bevel Pinion (13 teeth) (Include. 13)	56	778355	Spur Gear (11 teeth)
15	778370	Ring Gear (43 teeth)	57	778337	Spur Gear (13 teeth)
17	786188	Drive Pin	58	778353	Spur Gear (17 teeth)
18	786102	Spacer 1.130 X .695	59	778351	Spur Gear (21 teeth)
20	792077A	Ball 5/16" dia	60	778349	Spur Gear (24 teeth)
21	792078	Set Screw 3/8 - 16 x 3/8"	61	778345	Spur Gear (25 teeth)
22	792079	Spring .310 OD x .625 L	65	780189	Flat Washer .563 ID x .062W
25	792073A	Screw 1/4 - 20 x 1-1/4"	66	776422	Input Shaft
25A	792177	Screw 1/4-20 x 1-3/8"	67	776396	Shifter & Brake Shaft
26	792125	Retaining Ring (pkg of 2)	69	792170	Retaining Ring
27	792035	Retaining Ring	70	786187	Spacer .890
28	788040	Retaining Ring	71	788069	Square Cut Ring
29	780072	Thrust Washer .627 ID x .031W	71B	788092	"O" Ring
29A	780160	Thrust Washer .762 ID x .031W	76	780090	Flat Washer 1.128 ID x .058W
29B	780051	Thrust Washer .762 ID x .031W	77	788078A	Inverted Retaining Ring
29C	780199	Anti-Rotation Washer .632	79	792144	Spring .430 OD x .5000 L
30	780108	Cup Washer 1.127 ID x .032W	82	778333	Bevel & Spur Gear (30 & 13 teeth)
31	780001	Flat Washer .750 ID x .056W (Use As Needed)	83	778338	Spur Gear (27 teeth)
31A	780195	Flat Washer .750 ID x .062W	85	792154	Oil Fill Plug
32	788083	Oil Seal 5/8"	87	788089A	Oil Seal 9 / 16"
34	780194	Bushing .563	150	788093A	Liquid Gasket RTV Silicone
35	780193	Flanged Bushing 5 / 8" ID	157	788088A	Oil Seal 3 / 4"
35A	780197	Flanged Bushing .751	180	730229A	Gear Oil 80W90
36	790075	Brake Disk	900	794712	Replacement MST - 206-545C Transaxle
37	790007	Brake Pad Plate			
38	799021	Brake Pad (pkg of 2)			
39	786026	Dowel Pin			
40	792076A	Flat Washer .312 ID x .059W			

NOTE: All component dimensions given in U.S. inches
1 inch = 25.4 mm

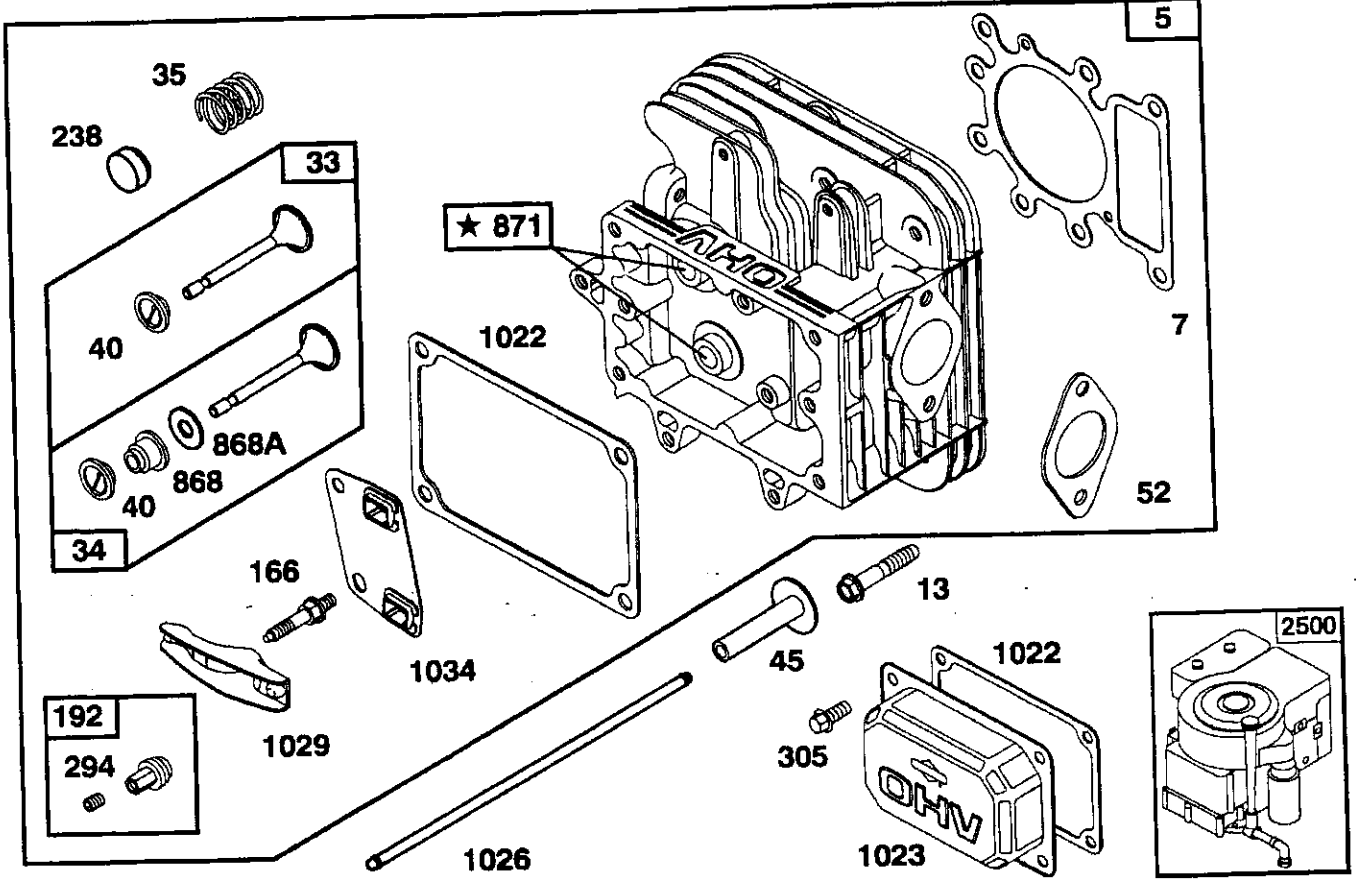
REPAIR PARTS

TRACTOR - - MODEL NUMBER 917.259140

BRIGGS & STRATTON ENGINE - MODEL NUMBER 287707, TYPE NUMBER 1255-E1



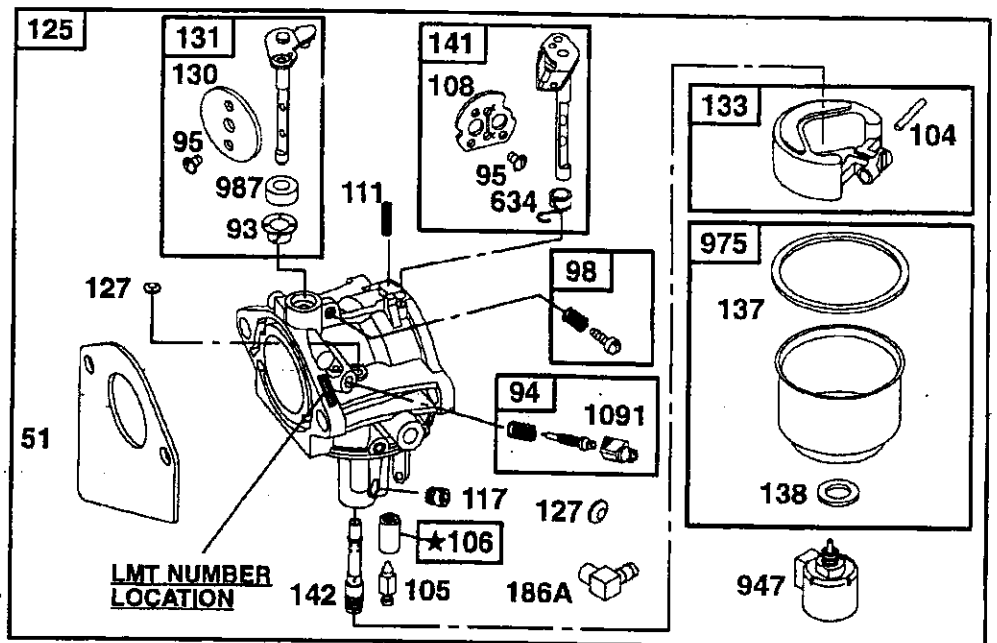
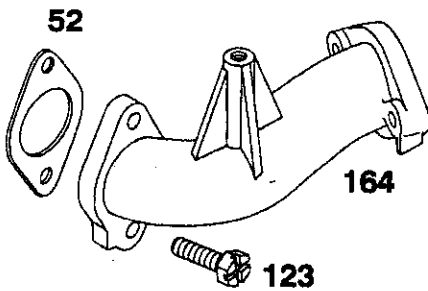
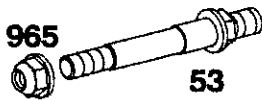
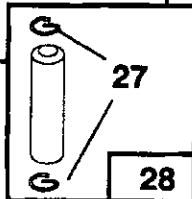
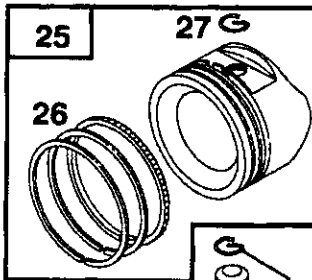
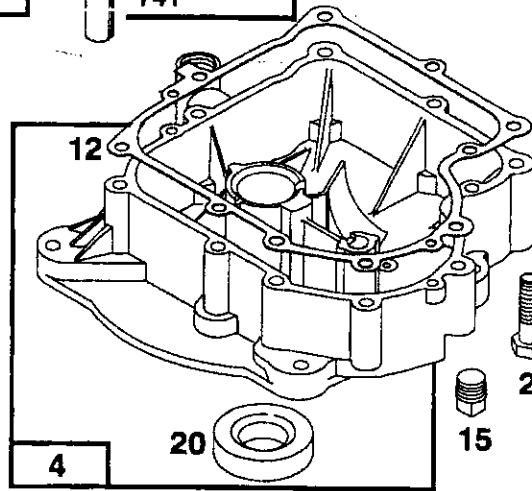
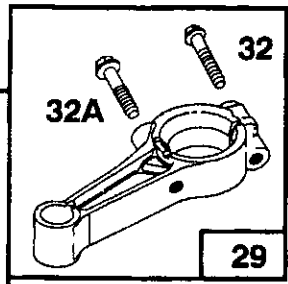
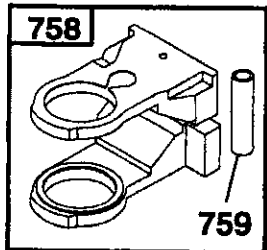
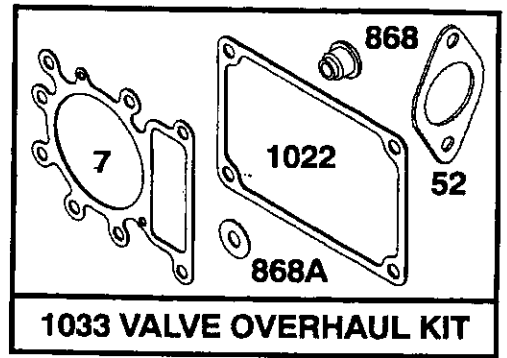
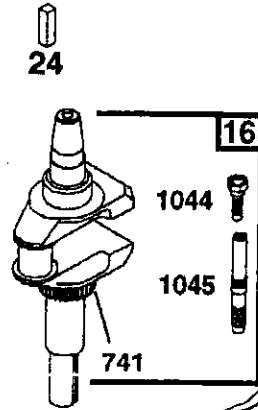
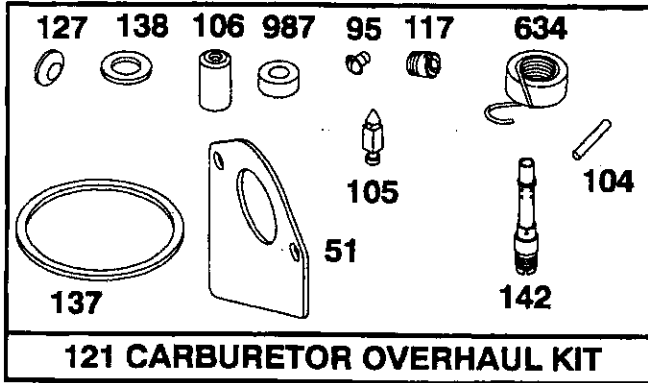
★ REQUIRES SPECIAL TOOLS TO INSTALL. SEE REPAIR INSTRUCTION MANUAL.



REPAIR PARTS

TRACTOR - - MODEL NUMBER 917.259140

BRIGGS & STRATTON ENGINE - MODEL NUMBER 287707, TYPE NUMBER 1255-E1

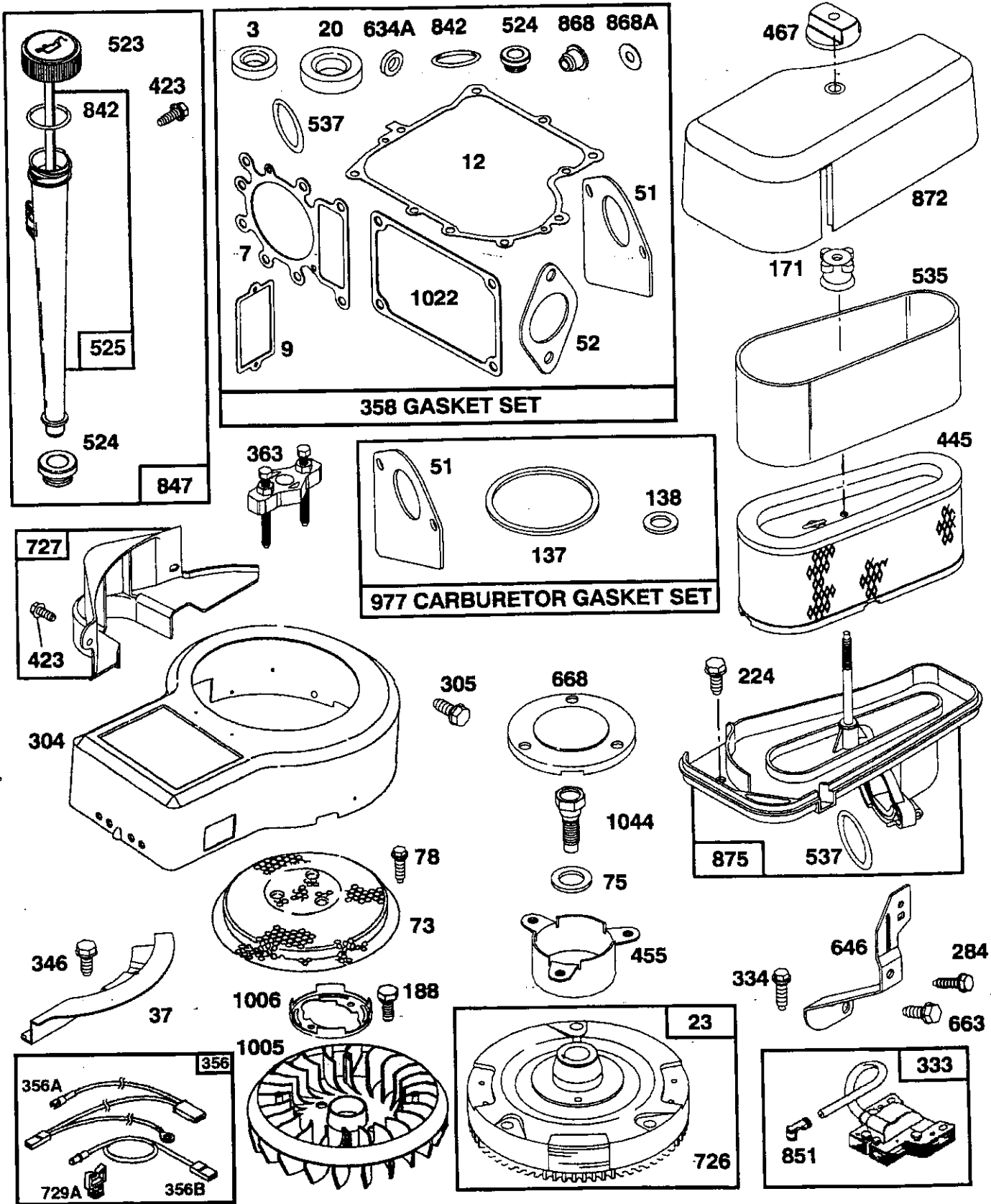


★ REQUIRES SPECIAL TOOLS TO INSTALL. SEE REPAIR INSTRUCTION MANUAL.

REPAIR PARTS

TRACTOR - - MODEL NUMBER 917.259140

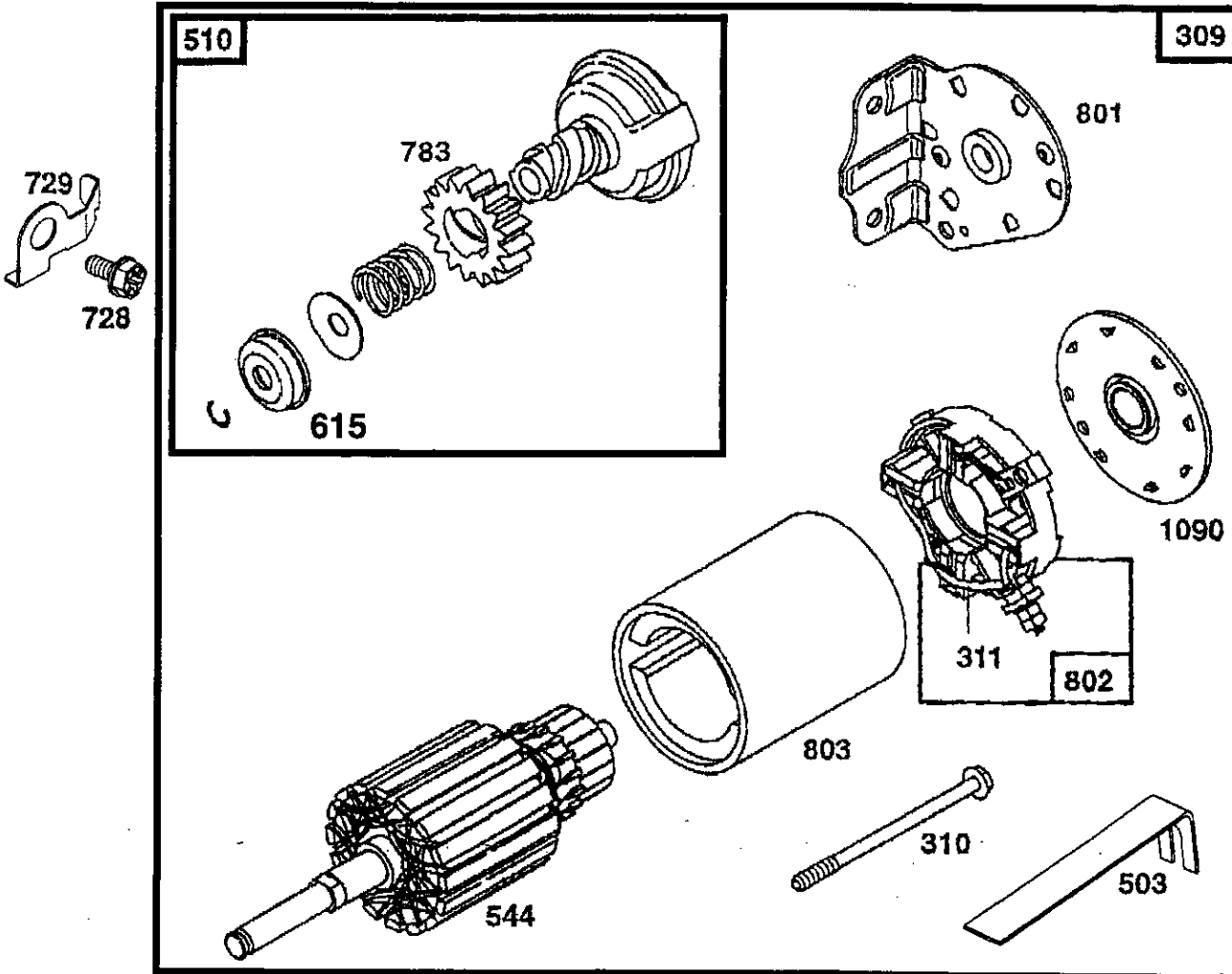
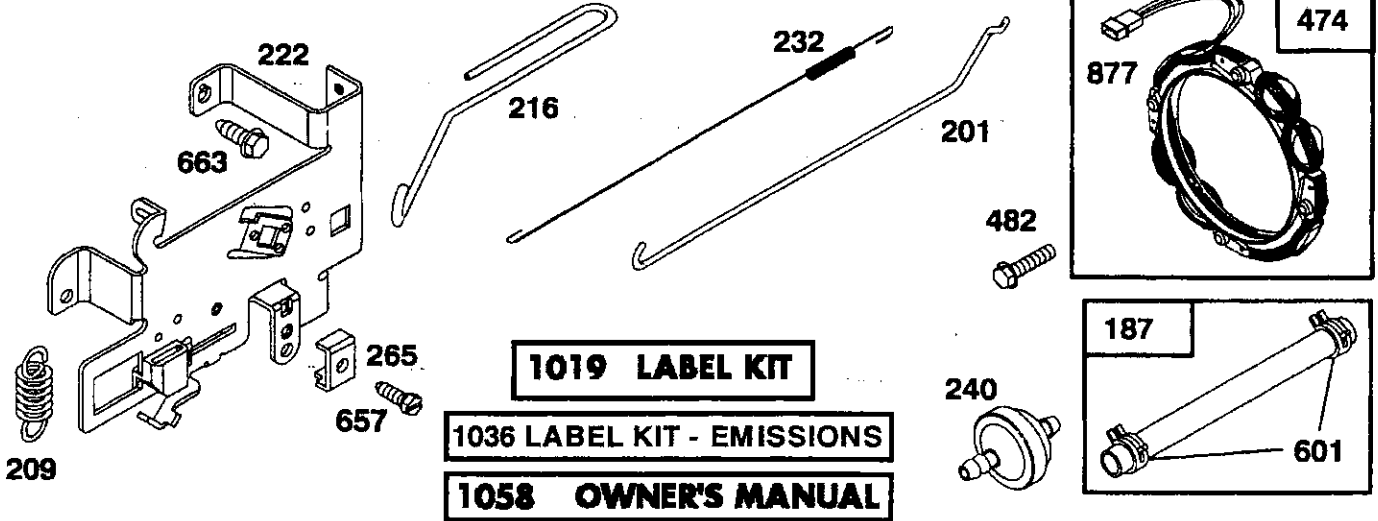
BRIGGS & STRATTON ENGINE - MODEL NUMBER 287707, TYPE NUMBER 1255-E1



REPAIR PARTS

TRACTOR -- MODEL NUMBER 917.259140

BRIGGS & STRATTON ENGINE - MODEL NUMBER 287707, TYPE NUMBER 1255-E1



REPAIR PARTS

TRACTOR - - MODEL NUMBER 917.259140

BRIGGS & STRATTON ENGINE - MODEL NUMBER 287707, TYPE NUMBER 1255-E1

KEY PART NO. NO.	DESCRIPTION	KEY PART NO. NO.	DESCRIPTION
1 496412	Cylinder Assembly	93 281346	Bushing, Throttle Shaft
2 399265	Bearing, Cylinder	94 498030	Valve, Needle
3 391086	* Seal, Oil	95 94098	** Screw, Throttle
4 494238	Base, Engine	98 495800	Screw, Idle Speed
5 495858	Head, Cylinder	104 231789	** Pin, Float Hinge
7 272614	*** Gasket, Cylinder Head	105 231855	** Valve Float
8 495735	Breather Assembly	106 231854	** Seat, Inlet Valve
9 27803	* Gasket, Valve Cover	108 224540	Valve, Choke
10 94621	Screw, Sems	111 262719	Spring, Choke
11 281246	Tube, Breather	117 232118	Jet, Main (Std.)
12 271916	* Gasket, Crankcase Cover, 1/64"	232119	Jet, Main (Hi-Alt.)
271997	* Gasket, Crankcase Cover, .005"	121 499233	Carburetor Overhaul Kit
271996	* Gasket, Crankcase Cover, .009"	123 94913	Screw, Elbow Mounting
13 94728	Screw, Cylinder Head	125 499153	Carburetor Assembly
15 94239	Plug, Oil Drain	127 - - -	** Plug, Welch (Sold in Kit Only)
16 495162	Crankshaft	130 224539	Valve, Throttle
94196	Timing Gear Key	131 494379	Shaft and Lever, Throttle
20 291675	* Seal, Oil	133 494381	Float, Carburetor
22 94624	Screw, Sems, Base Mounting	137 281165	**** Gasket, Float Bowl
23 492326	Flywheel and Ring Gear Assembly, Magneto	138 281164	**** Washer, Bowl
24 222698	Key, Flywheel	141 495931	Shaft and Lever, Choke
25 495860	Piston Assembly, Standard Size	142 232117	Nozzle, Carburetor
495977	Piston Assembly, .010" Oversize	164 214047	Elbow, Carburetor
495978	Piston Assembly, .020" Oversize	166 94555	Stud, Rocker Arm
495979	Piston Assembly, .030" Oversize	171 281051	Nut, Air Cleaner Mounting
26 495854	Ring Set, Piston, Standard Size	186A 493496	Elbow, Fuel Pipe
495852	Ring Set, Piston, .010" Oversize	187 492790	Line, Fuel (11" Long, Cut to Suit)
495851	Ring Set, Piston, .020" Oversize	188 94627	Screw, Hex Head, 3/4
495855	Ring Set, Piston, .030" Oversize	192 492160	Screw Assembly, Rocker Arm
27 263129	Lock, Piston Pin	201 262767	Link, Governor
28 498319	Pin Assy., Piston, Standard Size	209 260695	Spring, Governor
29 494504	Rod Assembly, Connecting	216 262766	Link, Choke
495490	Rod Assembly, Connecting, .020" Undersize Crankpin Bore	219 490815	Gear, Governor
32 94695	Screw, Hex Washer Head, 1-5/7/64	222 495611	Plate, Governor Control
32A 94648	Screw, Hex Washer Head, 1-5/8	224 94729	Screw, Sems, Air Cleaner
33 495856	Valve, Exhaust	225 495157	Crank, Governor
34 495857	Valve, Intake	227 493935	Lever Assembly, Governor
35 262811	Spring, Valve	230 94927	Washer, Governor Crank
37 224502	Guard, Flywheel	232 262785	Spring, Governor Link
40 224641	Retainer, Valve Spring	238 262836	Cap, Valve
45 262411	Tappet, Valve	240 394358	Filter, Fuel (In Fuel Line)
46 496884	Gear, Cam	265 221535	Clamp, Casing
51 272465	**** Gasket, Carburetor (Carburetor to Elbow)		
52 272569	*** Gasket, Carburetor (Elbow to Cylinder)		
53 94637	Stud, Carburetor Mounting		
73 224948	Screen, Flush Rotating		
75 225136	Washer, Spring		
78 94626	Screw, Sems		

NOTE: All component dimensions given in U.S. inches
1 inch = 25.4 mm

- * Included In Gasket Set (495993)
- ** Included In Carburetor Kit (499233)
- *** Included In Both Gasket Set (495993) and Valve Overhaul Kit (495992)
- **** Included In Gasket Set (495993), Carburetor Kit (499233) and Carburetor Gasket Set (494385)

REPAIR PARTS

TRACTOR - - MODEL NUMBER 917.259140

BRIGGS & STRATTON ENGINE - MODEL NUMBER 287707, TYPE NUMBER 1255-E1

KEY PART NO. NO.	DESCRIPTION	KEY PART NO. NO.	DESCRIPTION
284 94704	Screw, Hex Head	741 262932	Gear, Timing
294 810068	Screw, Set	757 213998	Link, Counterweight
304 496318	Housing, Blower	758 399891	Counterweight Assembly
305 94786	Screw, Hex, Head, Blower Housing Mounting	759 298909	Pin, Counterweight
306 225020	Shield, Cylinder	761 94593	Screw, Counterweight
307 94930	Screw, Cylinder Shield	783 280104	Gear, Starter
309 497595	Motor, Starter	801 394856	Cap, Drive
310 497602	Bolt, Thru	802 497605	Cap, End
311 497608	Brush Set	803 497604	Housing, Starter
333 495859	Armature, Magneto	842 270920	* Seal, Oil Filler Cap
334 94731	Screw, Sems, Armature Mounting	847 496415	Fill Group, Oil
337 491055	Plug, Spark	851 493880	Terminal, Ignition Cable
346 93705	Screw, Hex Head	868 494435	*** Seal Assembly, Valve
356 497708	Wire Assembly	868A 272610	*** Gasket, Valve
356A 497671	Wire, Stop	871 262835	Bushing, Guide (Intake & Exhaust)
356B 494705	Wire Stop	872 281104	Cover, Air Cleaner
358 495993	Gasket Set	875 495862	Body, Air Cleaner
363 19203	Puller, Flywheel	877 393456	Diode and Connector Assembly
383 89838	Wrench, Spark Plug	947 497672	Solenoid
423 94903	Screw, Sems	965 94108	Nut, Hex
445 496894	Cartridge, Air Cleaner	975 495933	Bowl Assembly, Carburetor
455 222561	Cup, Screen Mounting	977 494385	Carburetor Gasket Set
467 493903	Knob, Air Cleaner	987 281166	** Seal, Throttle Shaft
474 393474	Stator, Alternator	1005 280687	Fan, Flywheel
482 93621	Screw, Sems	1006 224413	Retainer, Fan
503 806000	Grounding Strap	1019 496758	Label Kit
510 497606	Drive, Starter	1022 272475	*** Gasket, Cover
523 495230	Cap and Dipstick, Oil Filler	1023 224552	Cover, Rocker Arm
524 281370	* Seal, Filler Tube	1026 494432	Rod, Push, Intake
525 496113	Tube, Oil Filler	495136	Rod, Push, Exhaust
535 272403	Element, Filter	1029 224554	Arm, Rocker
537 281106	* O-Ring, Air Cleaner	1033 495992	Valve Overhaul Kit
544 497603	Armature, Starter	1034 495248	Guide Assembly, Push Rod
552 231597	Bushing, Governor Crank	1036 499364	Label Kit, Emissions
562 94907	Bolt, Governor Lever	1044 94673	Screw, Hex Head
592 231978	Nut, Hex	1045 231828	Extension, Crankshaft
601 93053	Clamp, Fuel Pipe	1058 272623	Manual, Owner's
614 93306	Pin, Cotter	1090 497607	Retainer, Brush
615 263080	Retainer	1091 281364	Cap, Limiter
634 494455	** Seal, Choke Shaft	2500 28N707-1026	Replacement Engine
634A 491323	* Seal, Governor	— — 496050	Replacement Shortblock
635 280872	Elbow, Spark Plug		
646 224546	Brace, Air Cleaner		
657 94906	Screw, Sems		
663 94929	Screw, Self-Tapping		
668 280848	Spacer		
718 230192	Pin, Dowel		
726 392134	Gear, Ring (Includes Mounting Hardware)		
727 490324	Cover, Starter		
728 94951	Screw, Hex Head		
729 225170	Retainer, Wire		
729A 281390	Clip, Wire		
		RPM Settings:	Low: 1650-1850, High: 3200-3400
		NOTE:	All component dimensions given in U.S. inches 1 inch = 25.4 mm
		*	Included In Gasket Set (495993)
		**	Included In Carburetor Kit (499233)
		***	Included In Both Gasket Set (495993) and Valve Overhaul Kit (495992)
		****	Included In Gasket Set (495993), Carburetor Kit (499233) and Carburetor Gasket Set (494385)

LIMITED TWO YEAR WARRANTY ON CRAFTSMAN RIDING EQUIPMENT

For two (2) years from the date of purchase, if this Craftsman Riding Equipment is maintained, lubricated and tuned up according to the instructions in the owner's manual, Sears will repair or replace, free of charge, any parts found to be defective in material or workmanship.

This Warranty does not cover:

- Expendable items which become worn during normal use, such as blades, spark plugs, air cleaners, belts, etc.
- Tire replacement or repair caused by punctures from outside objects, such as nails, thorns, stumps, or glass.
- Repairs necessary because of operator abuse, negligence, improper storage or accident or the failure to maintain the equipment according to the instructions contained in the owner's manual.
- Riding equipment used for commercial or rental purposes.

LIMITED 90 DAY WARRANTY ON BATTERY

For ninety (90) days from date of purchase, if any battery included with this riding equipment proves defective in material or workmanship and our testing determines the battery will not hold a charge, Sears will replace the battery at no charge.

IN-HOME WARRANTY SERVICE ON YOUR CRAFTSMAN RIDING EQUIPMENT IS AVAILABLE AT NO-CHARGE FOR 30 DAYS FROM THE DATE OF PURCHASE. PLEASE CONTACT YOUR NEAREST SERVICE CENTER. AFTER 30 DAYS FROM THE DATE OF PURCHASE, WARRANTY SERVICE IS AVAILABLE BY TAKING YOUR CRAFTSMAN RIDING EQUIPMENT TO YOUR NEAREST SEARS SERVICE CENTER. (IN-HOME WARRANTY SERVICE WILL STILL BE AVAILABLE AFTER 30 DAYS FROM THE DATE OF PURCHASE BUT A STANDARD TRIP CHARGE WILL APPLY.) THIS WARRANTY APPLIES ONLY WHILE THIS PRODUCT IS IN THE UNITED STATES.

This Warranty gives you specific legal rights, and you may also have other rights which may vary from state to state.

SEARS, ROEBUCK AND CO., D/817 WA, HOFFMAN ESTATES, IL 60179

CRAFTSMAN®