

REPAIR PARTS MANUAL
MODEL NO. 277362
Lawn Tractor

16 HK 42" HYDRO 2004

CRAFTSMAN®

HOW TO USE THIS MANUAL

This manual is designed to provide the customer with a means to identify the parts on his/her tractor when ordering repair parts. The illustrations may or may not represent the actual assemblies; therefore, it is not recommended to use this manual as a guide to assemble or disassemble the tractor. Some hardware and parts are drawn larger in order to more readily identify them.

Each tractor has its own model number.

The model number for your tractor can be found on the fender under the seat.

When ordering parts, always give the following information:

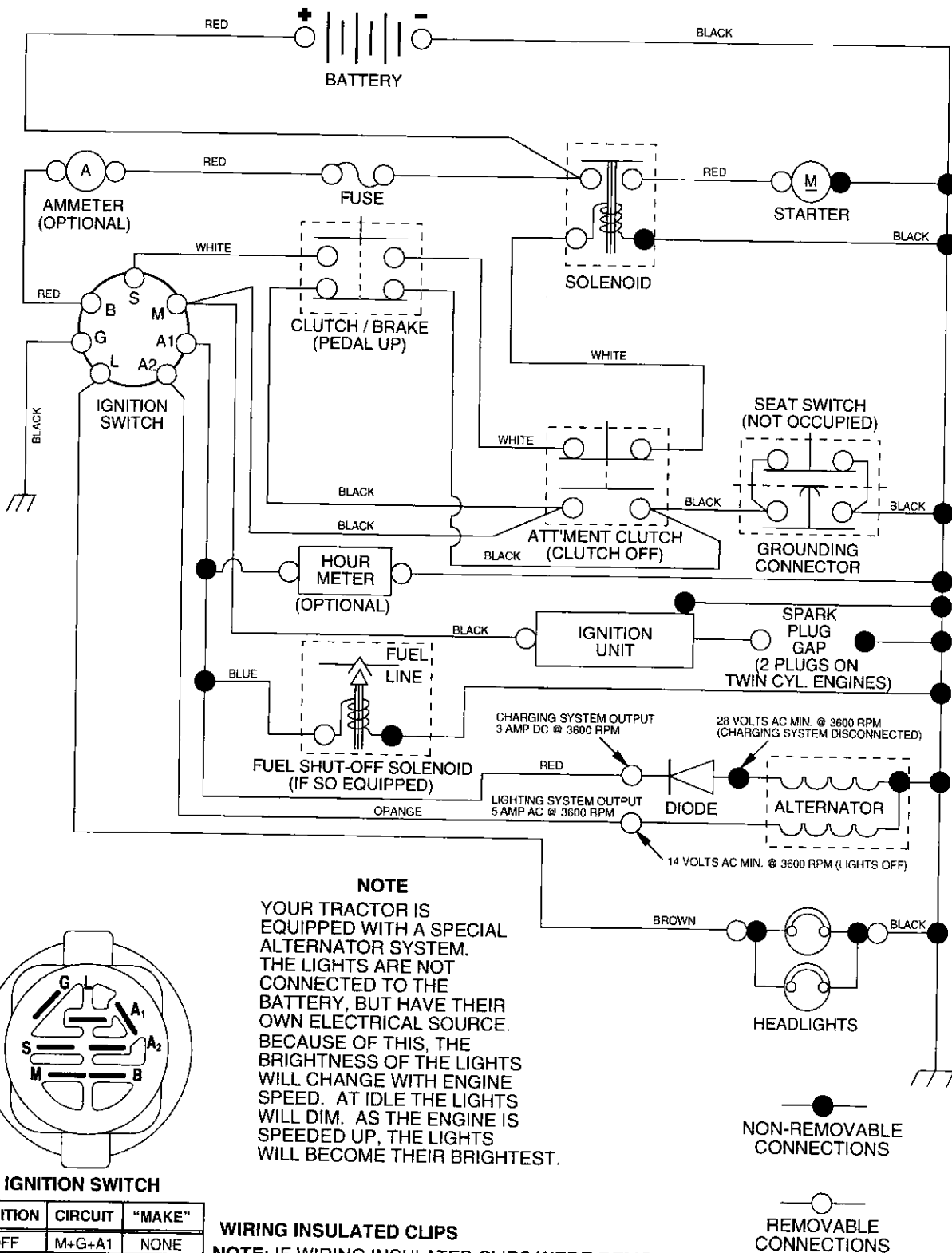
- Product - "Tractor"
- Model Number - "277362"
- Part Number
- Part Description

TABLE OF CONTENTS

SCHEMATIC	3
ELECTRICAL.....	4-5
CHASSIS.....	6-7
DRIVE.....	8-9
STEERING	10-11
SEAT	12
DECALS.....	13
ENGINE.....	14-15
MOWER LIFT.....	16-17
MOWER DECK	18-19
TRANSAXLE.....	20-21
ENGINE BREAKDOWN.....	22-27
WARRANTY.....	28

TRACTOR- -MODEL NO. 917. 277362

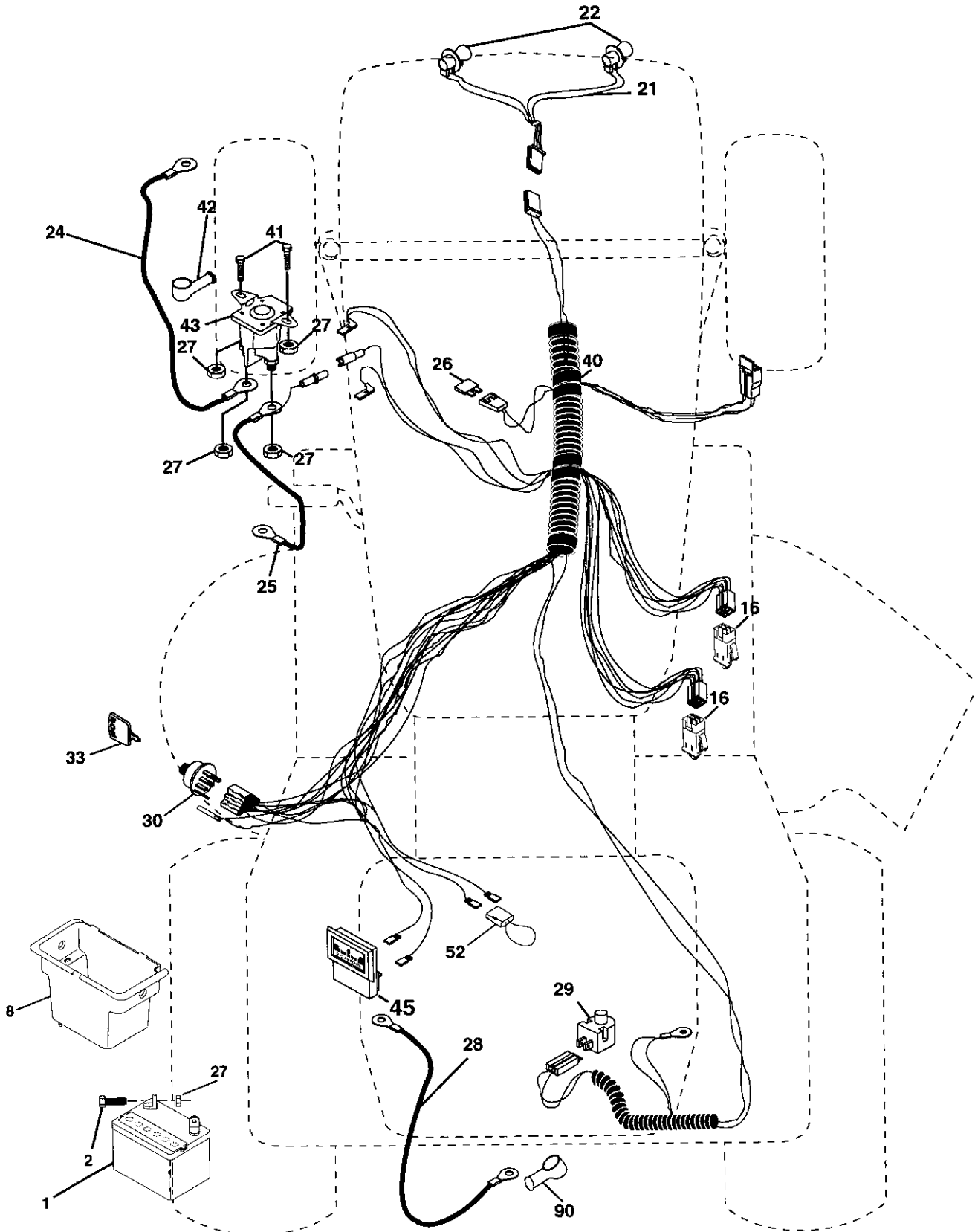
SCHEMATIC



REPAIR PARTS

TRACTOR- -MODEL NO. 917. 277362

ELECTRICAL



REPAIR PARTS

TRACTOR- -MODEL NO. 917. 277362

ELECTRICAL

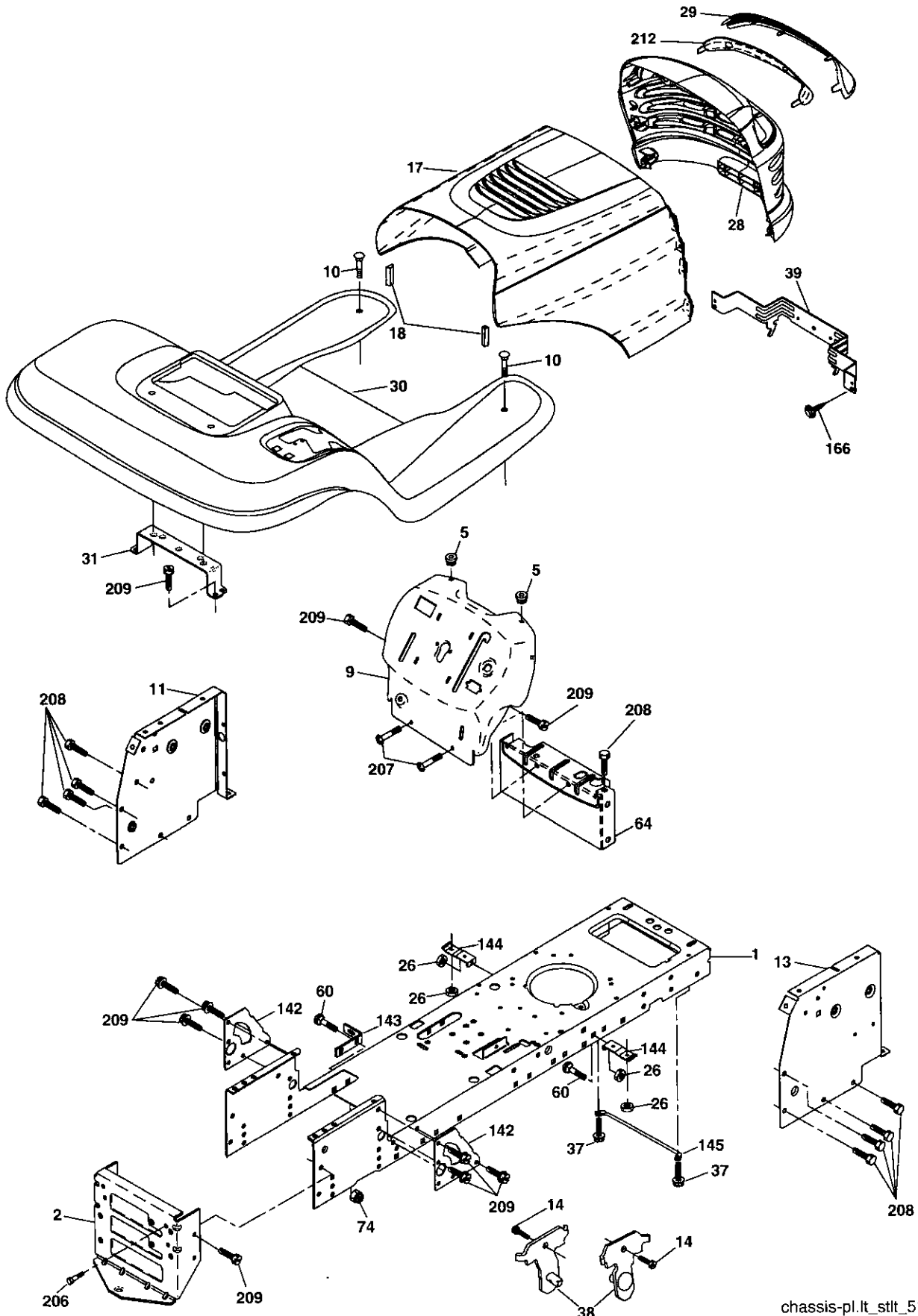
KEY NO.	PART NO.	DESCRIPTION
1	163465	Battery
2	74760412	Bolt Hex Hd 1/4-20 unc x 3/4
8	176689	Box Battery
16	176138	Switch, Interlock
21	183759	Harness Asm Light W/4152j
22	4152J	Bulb Light #1156
24	4799J	Cable Battery 6 Ga. 11" red
25	146147	Cable Battery 6 Ga. w/16 wire red
26	175158	Fuse
27	73510400	Nut Keps Hex 1/4-20 unc
28	4207J	Cable Ground 6 Ga. 12" black
29	121305X	Switch Plunger Normal NC Gray
30	175566	Switch Ign
33	140403	Key Ign
40	179720	Harness Ign
41	71110408	Bolt Blk. Fin Hex 1/4-20 unc x 1/2
42	131563	Cover Terminal Red
43	178861	Solenoid
45	121433X	Ammeter Rectangular
52	141940	Protection Wire Loop
90	180449	Cover Terminal

NOTE: All component dimensions give in U.S. inches
1 inch = 25.4 mm

REPAIR PARTS

TRACTOR- -MODEL NO. 917. 277362

CHASSIS AND ENCLOSURES



chassis-pl.lt_stilt_51

REPAIR PARTS

TRACTOR- -MODEL NO. 917. 277362

CHASSIS AND ENCLOSURES

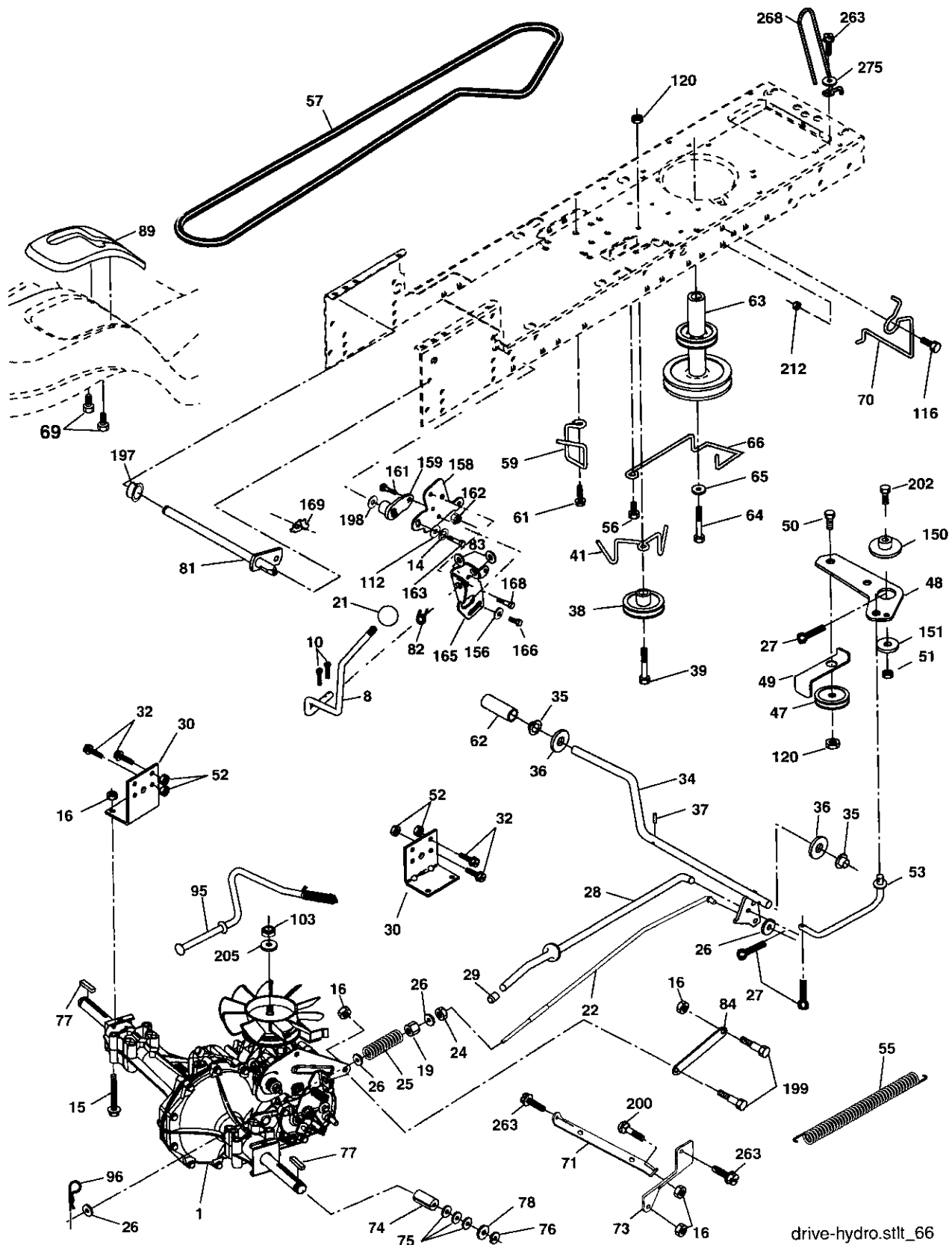
KEY NO.	PART NO.	DESCRIPTION
1	174619	Chassis
2	176554	Drawbar
5	155272	Bumper Hood/Dash
9	187846X014	Dash
10	STD533710	Bolt, Carriage 3/8-16 x 3/4
11	174996	Panel, Dash, L.H.
13	172105X010	Panel, Dash, R.H.
14	17490608	Screw Thdrol 3/8-16 x 1/2
17	185682X558	Hood Assembly
18	184921	Bumper Hood
26	STD541437	Nut
28	190380	Grille/Lens Asm(Includes #'s 29 and 212)
29	174332X599	Lens Laser
30	188571X558	Fend/Ftrest
31	139976	Bracket, Fender Support
37	17490508	Screw Thdrol 5/16-18 x 1/2
38	175710	Pivot Bracket Assembly, Rear
39	174714	Bracket Pivot Laser Lt
60	72140606	Bolt Rdhd Sqnk 3/8-16 unc x 1
64	154798	Dash Lower STLT
74	STD541437	Nut Crownlock 3/8-16 unc
142	175702	Plate Reinforcement STLT
143	186689	Bracket Swaybar Chassis
144	175582	Bracket Pnt Footrest STLT
145	156524	Rod Pivot Chassis/Hood
166	171875	Screw Hwhd Hi-Lo #13-16 x 3/4
206	170165	Bolt Shoulder 5/16-18 TT
207	17670508	Screw Thdrol 5/16-18 x 1/2 Tytt
208	17670608	Screw Thdrol 3/8-16 x 1/2
209	17000612	Screw Hexwsh Thdr 3/8-16 x 3/4
212	175143	Insert Lens Reflective
--	5479J	Plug, Button

NOTE: All component dimensions given in U.S. inches
1 inch = 25.4 mm

REPAIR PARTS

TRACTOR- -MODEL NO. 917. 277362

DRIVE



drive-hydro.stlt_66

REPAIR PARTS

TRACTOR- -MODEL NO. 917. 277362

DRIVE

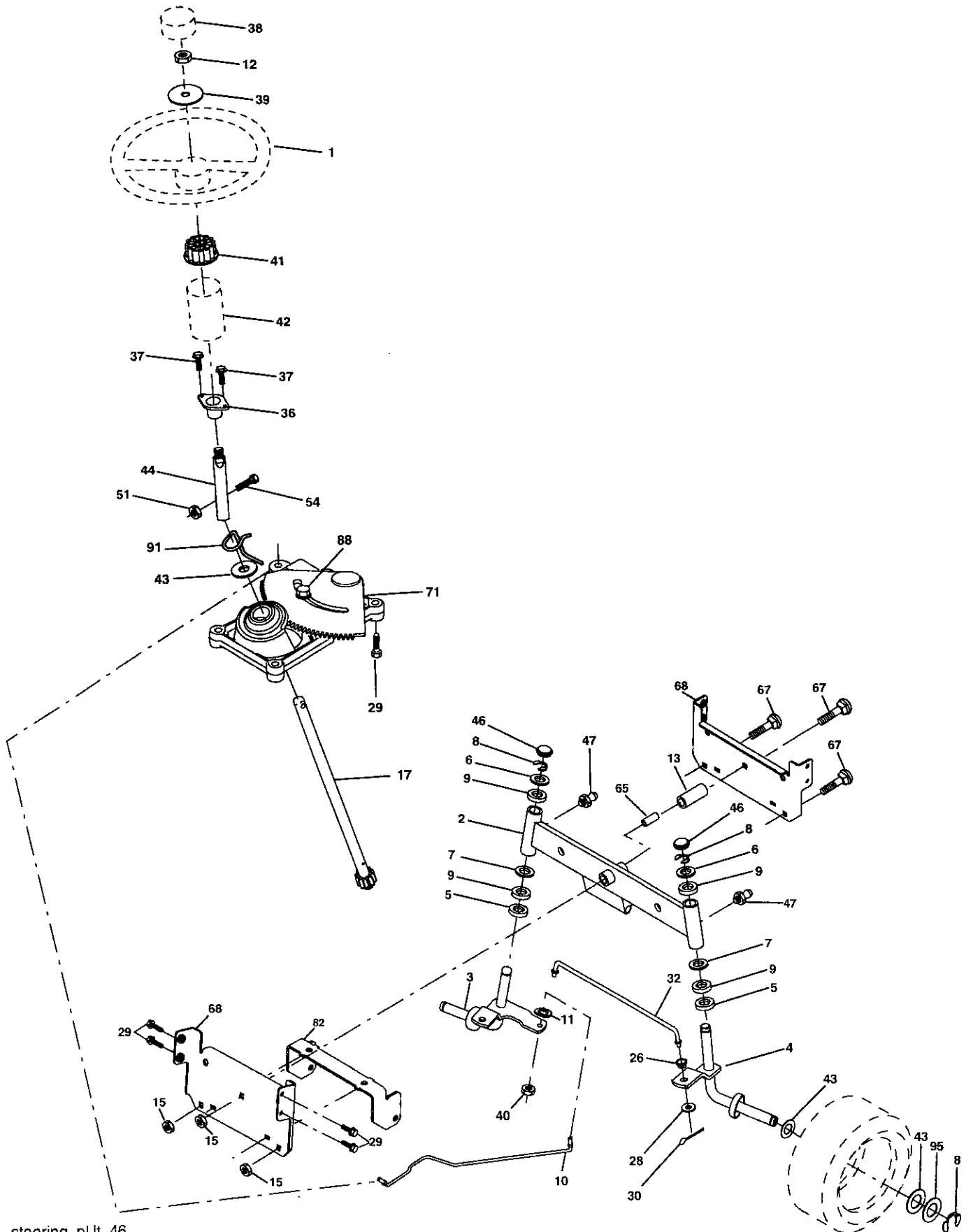
KEY NO.	PART NO.	DESCRIPTION	KEY NO.	PART NO.	DESCRIPTION
1	-----	Transmission (See Breakdown)	70	180218	Guide, Belt, Mower Drive RH
8	165866	Hydro Gear Model 322-0510	71	169183	Strap, Torque, Lh
10	STD561210	Rod, Shift	73	169182	Strap, Torque, Rh
14	STD551125	Pin, Cotter 1/8 x 1	74	137057	Spacer, Axle
15	74490544	Washer Lock 1/4	75	121749X	Washer 25/32 x 1-1/4 x 16 Ga.
16	73800500	Bolt Hex Flghd 5/16-18 Gr. 5	76	12000001	Ring, E
19	73800600	Nut, Lock Hex w/lns 5/16-18 unc	77	123583X	Key, Square
21	130564	Nut Lock Hex w/lns 3/8-16	78	121748X	Washer 25/32 x 1-5/8 x 16 Ga.
22	169498	Knob	81	165596	Shaft Asm Cross
24	73350600	Rod, Brake	82	165711	Spring, Torsion
25	106888X	Nut	83	19171216	Washer 17/32 x 3/4 x 16 Ga.
26	19131316	Spring, Rod, Brake	84	169843	Link Transaxle
27	STD561210	Washer 13/32 x 13/16 x 16 Ga.	89	188309X428	Console, Shift
28	175765	Pin, Cotter 1/8 x 3/4	95	170201	Control Asm Bypass Hydro
29	71673	Rod, Parking Brake	96	STD624003	Spring, Retainer 1"
30	174973	Cap, Parking Brake	103	73940800	Nut Hex Jam Toplock 1/2-20 unf
32	74760512	Bracket, Transmission	116	72140608	Bolt Rdhd Sq Neck 3/8-16 x 1
34	175578	Bolt Hex 5/16-18 unc x 3/4	120	73900600	Nut Lock Flg 3/8-16
35	120183X	Shaft, Foot Pedal	150	175456	Spacer Retainer
36	19211616	Bearing, Nylon	151	19133210	Washer 13/32 x 2 x 10
37	1572H	Washer	156	166002	Washer 5/16 x 1.0 x 1.25
38	179114	Pin, Roll	158	165589	Bracket Shift Mount
39	74760648	Pulley, Composite	159	183900	Hub Shift
41	175556	Bolt	161	72140406	Bolt Rdhd Sqnk 1/4-20 x 3/4 Gr. 5
47	127783	Keeper, Belt, Idler	162	73680400	Nut Crownlock 1/4-20 unc
48	154407	Pulley, Idler, V-Belt	163	74780416	Bolt Hex Fin 1/4-20 x 1
49	123205X	Bellcrank Clutch Grnd Drustl	165	165623	Bracket Pivot Lever
50	72110612	Retainer, Belt	166	17490510	Screw 5/16 x 18 x 5/8
51	STD541437	Bolt Carr. Sh 3/8-16 x 1-1/2 Gr. 5	168	165492	Bolt Shoulder 5/16-18 x .561
52	STD541431	Nut	169	165580	Plate Fastener Cross Shaft
53	105710X	Nut Crownlock 5/16-18	197	169613	Nyliner Snap-In
55	105709X	Link, Clutch	198	169593	Washer Nyliner
56	17060620	Spring, Return, Clutch	199	169612	Bolt Shoulder 5/16-18 unc
57	140294	Screw 3/8-16 x 1-1/4	200	72140508	Bolt RdHd Sqnk 5/16-18 unc x 1
59	169691	V-Belt, Drive	202	72110614	Bolt Carr. Sh 3/8-16 x 1-3/4 Gr. 5
61	17120614	Keeper, Belt, Center	205	19171616	Washer 17/32 x 1 x 16 Ga.
62	8883R	Screw 3/8-16 x .875	212	145212	Nut Hex Flange Lock
63	180219	Cover, Pedal	263	17000612	Screw 3/8-16 x 3/4
64	173937	Pulley, Engine	268	182402	Guard Muffler
65	10040700	Bolt Hex 7/16 x 4 Gr. 5	271	17000612	Screw 3/8-16 x 3/4
66	154778	Washer	275	19131614	Washer 13/32 x 1 x 14 Ga.
69	142432	Keeper, Belt Engine Hydro			
		Screw Hex Wsh Hi-Lo 1/4-1/2 unc			

NOTE: All component dimensions given in U.S. inches
1 inch = 25.4 mm

REPAIR PARTS

TRACTOR- -MODEL NO. 917. 277362

STEERING ASSEMBLY



steering_pl.lt_46

REPAIR PARTS

TRACTOR- -MODEL NO. 917. 277362

STEERING ASSEMBLY

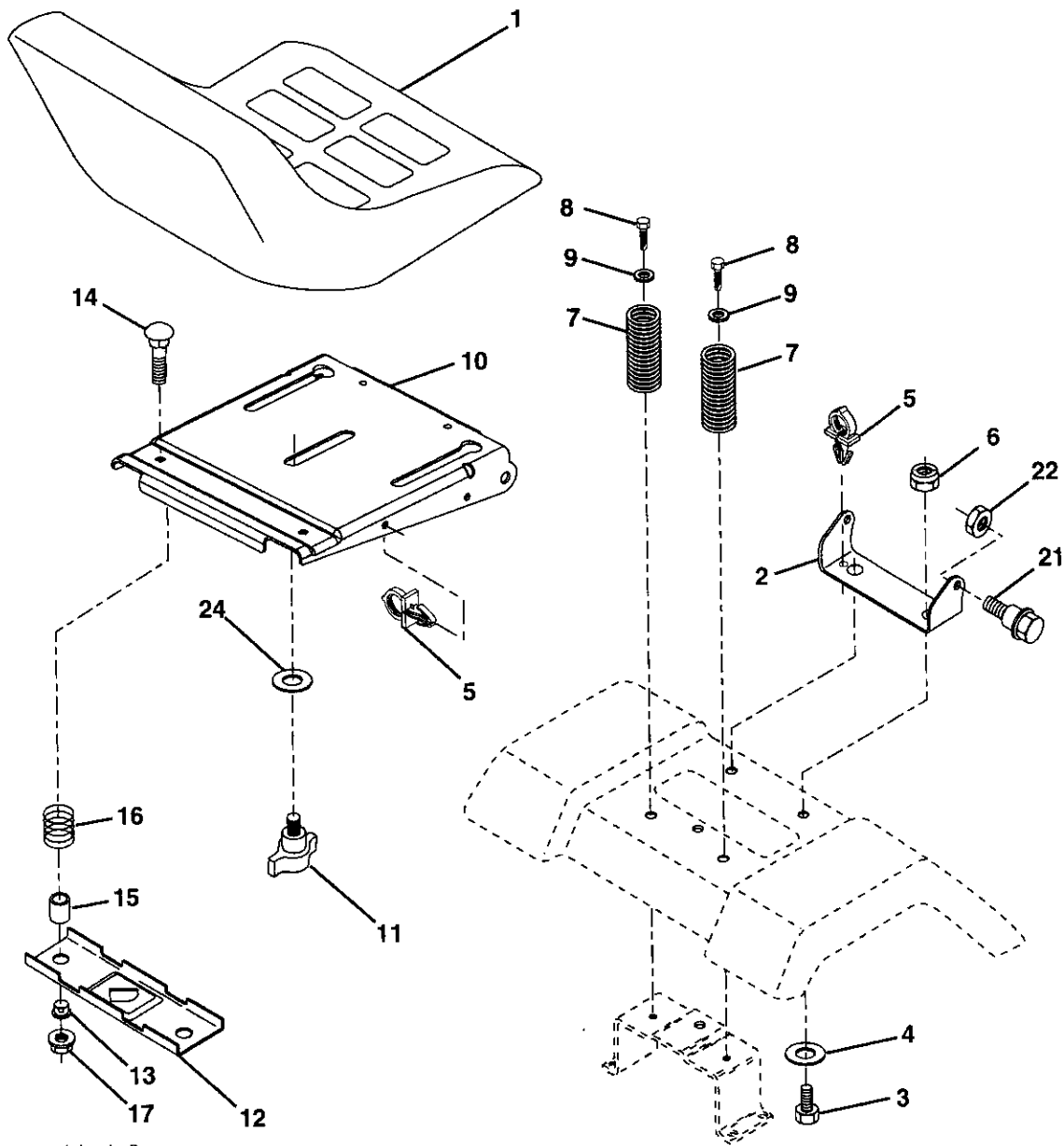
KEY NO.	PART NO.	DESCRIPTION
1	186780	Steering Wheel
2	175131	Axle Assembly
3	169840	Spindle Assembly, L.H.
4	169839	Spindle Assembly, R.H.
5	6266H	Bearing, Race, Thrust, Hardened
6	121748X	Washer 25/32 x 1-5/8 x 16 Ga.
7	19272016	Washer 27/32 x 1-1/4 x 16 Ga.
8	12000029	Ring, Klip
9	3366R	Bearing Col. Steering
10	175121	Draglink
11	STD551137	Washer, Lock
12	73940800	Nut Hex Jam Toplock 1/2-20 unf
13	136518	Spacer Bearing Axle Front
15	145212	Nut, Hex Flange Lock
17	180641	Shaft Assembly, Steering
26	126847X	Bushing, Link, Drag
28	19131416	Washer 13/32 x 7/8 x 16 Ga.
29	17000612	Screw 3/8-16 x 3/4
30	STD561210	Pin Cotter
32	130465	Rod, Tie
36	155099	Bushing, Steering
37	152927	Screw
38	186781	Insert, Steering Wheel
39	19183812	Washer 9/16 x 2-3/8 12 Ga.
40	73540600	Nut Crownlock 3/8-24
41	186737	Adaptor, Steering Wheel
42	145054X428	Boot, Steering Shaft
43	121749X	Washer 25/32 x 1-1/4 x 16 Ga.
44	180640	Extension Shaft Steering LR.LT
46	121232X	Cap, Spindle
51	73540400	Nut Crownlock 1/4-28
54	71130420	Bolt Hex 1/4-28 unf x 1-1/4 Gr. 8
65	160367	Spacer Brace Axle
67	72110618	Bolt RDHD Sqnk 3/8-16 x 2-1/4
68	169827	Axle, Brace
71	175146	Steering Asm.
82	169835	Bracket Susp. Chassis Front
88	175118	Bolt Shoulder 7/16-20 unc
91	175553	Clip Steering
95	188967	Washer Hardened

NOTE: All component dimensions given in U.S. inches
1 inch = 25.4 mm

REPAIR PARTS

TRACTOR- -MODEL NO. 917. 277362

SEAT ASSEMBLY



seat_lt.knob_9

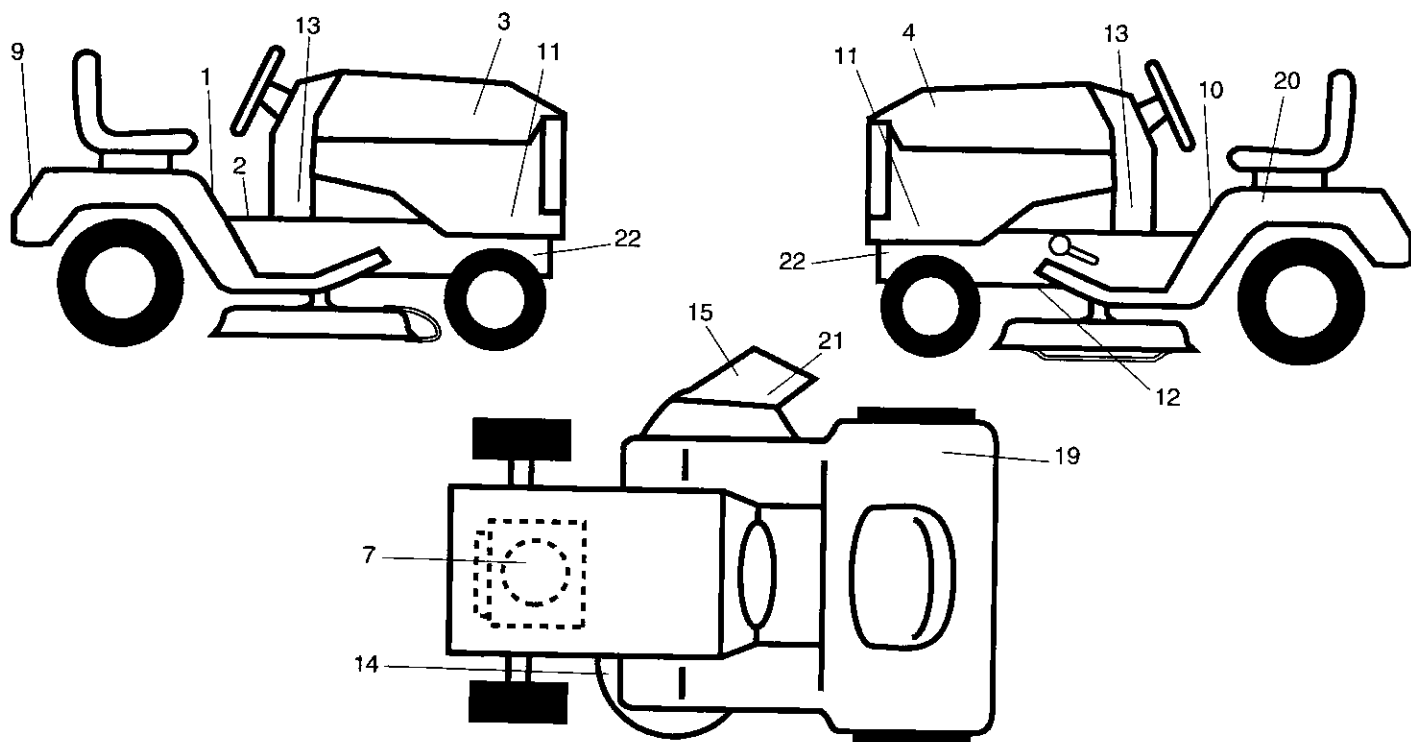
KEY NO.	PART NO.	DESCRIPTION	KEY NO.	PART NO.	DESCRIPTION
1	188716	Seat	13	121248X	Bushing Snap Blk Nyl 50 Id
2	180166	Bracket Pivot Seat	14	72050412	Bolt Rdhd Sht Nk 1/4-20 x 1-1/2
3	71110616	Bolt Fin Hex 3/8-16 unc x 1	15	134300	Spacer Split 28 x 96 Zinc
4	19131610	Washer 13/32 x 3/4 x 10 Ga.	16	121250X	Spring Cprsn 1 27 Blk Pnt
5	145006	Clip Push In Hinged	17	123976X	Nut Lock 1/4 Lge Flg Gr. 5 Zinc
6	STD541437	Nut Hex Lock w/Ins 3/8-16 unc	21	171852	Bolt Shoulder 5/16-18 unc-2A
7	124181X	Spring Seat Cprsn 2 250 Blk Zi	22	STD541431	Nut Hex Lock w/Ins 5/16-18
8	17000616	Screw 3/8-16 x 1	24	19171912	Washer 17/32 x 1-3/16 x 12 Ga.
9	19131614	Washer 13/32 x 1 x 14 Ga.			
10	180186	Pan Seat			
11	166369	Knob Seat Adj Wingnut			
12	121246X	Bracket Pnt Mounting Switch			

NOTE: All component dimensions given in U.S. inches
1 inch = 25.4 mm

REPAIR PARTS

TRACTOR- -MODEL NO. 917. 277362

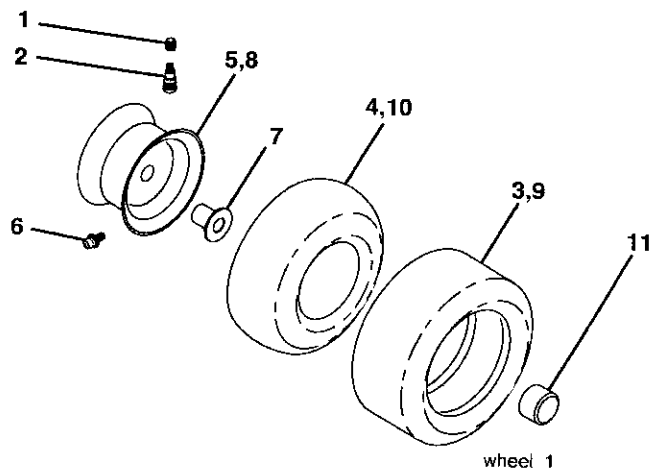
DECALS



KEY NO.	PART NO.	DESCRIPTION
1	140837	Decal, Brake Parking Saddle
2	145498	Decal, Read Owners Manual
3	184728	Decal, Hood, R.H.
4	184729	Decal, Hood, L.H.
7	189224	Decal, HP Engine
9	184899	Decal, Fender, Craftsman
10	159737	Decal, Brake Clutch
11	184730	Decal, Panel Side
12	146046	Decal, V-Belt Drive Schematic
13	189276	Decal, Dash Panel
14	160396	Decal, V-Belt Schematic
15	179128	Decal, Deck B 42"

KEY NO.	PART NO.	DESCRIPTION
19	180432	Decal, DBA
20	145005	Decal Battery Dngr
21	182166	Decal, Cutfinger
22	159736	Decal, Hot Muffler
--	138311	Decal, Lift Handle
--	166960	Decal, By pass
--	162598	Decal, Draw Bar Load Limit
--	184310X428	Pad, Footrest LH STLT
--	184311X428	Pad, Footrest RH STLT
--	193294	Manual, Operator's (Euro)
--	193295	Manual, Operator's (Scand)
--	193296	Manual Parts

WHEELS & TIRES



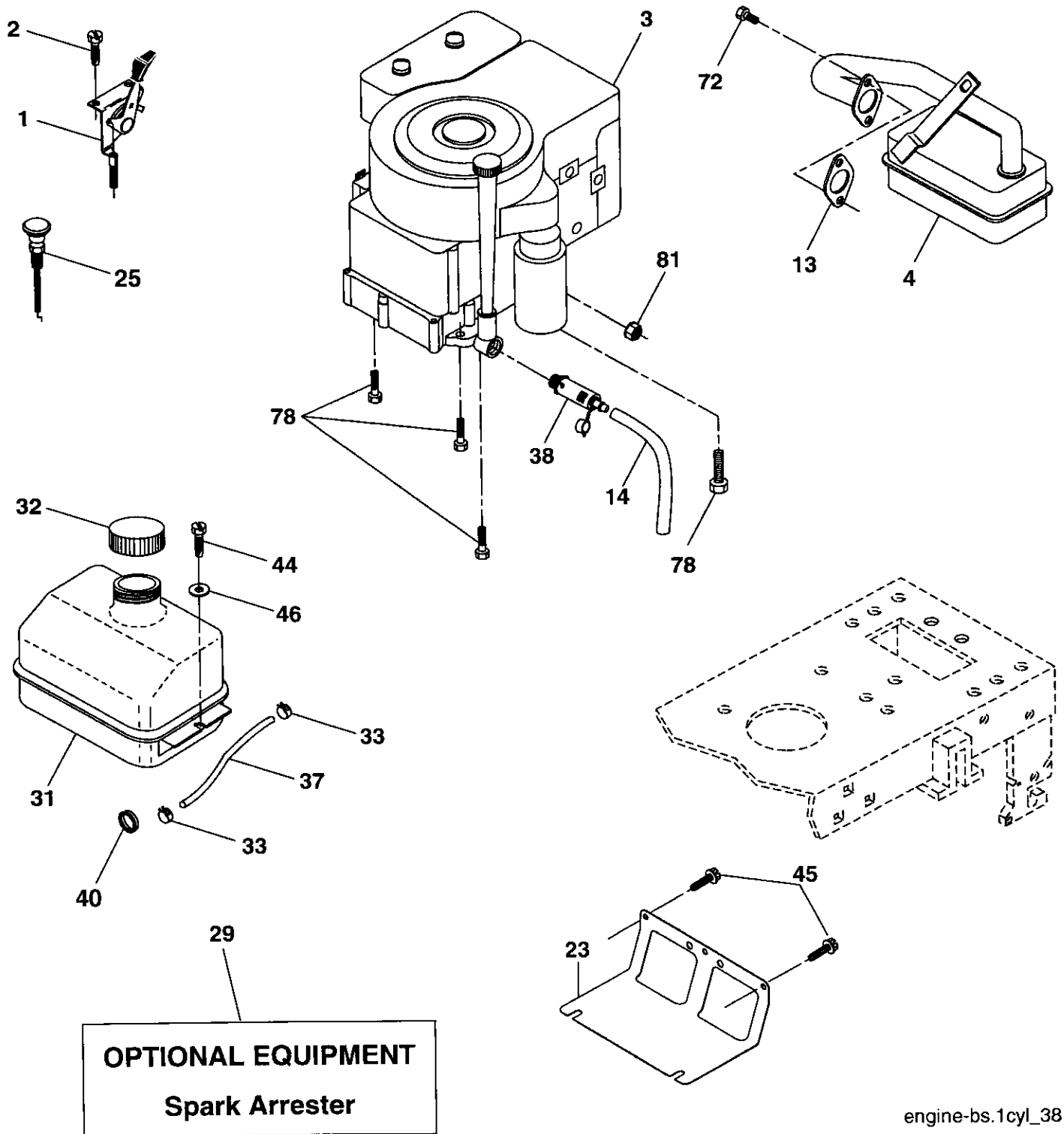
KEY NO.	PART NO.	DESCRIPTION
1	59192	Cap Value Tire
2	65139	Stem Value
3	106222X	Tire F Ts 15 x 6.0 - 6 Service
4	59904	Tube Inner Front #35060
5	106732X624	Rim Asm 6" front White Service
6	278H	Fitting Grease
7	9040H	Bearing Flange
8	106108X624	Rim Asm 8" rear White Service
9	124635X	Tire R Ts 18 x 8-5-8 C Service
10	7152J	Tube Rear 9 5 x 8 Service
11	104757X428	Cap Axle Blk 1 50 x 1 00
--	144334	Sealant, Tire (10 oz. tube)

NOTE: All component dimensions given in U.S. inches
1 inch = 25.4 mm

REPAIR PARTS

TRACTOR- -MODEL NO. 917. 277362

ENGINE



engine-bs.1cyl_38

REPAIR PARTS

TRACTOR- -MODEL NO. 917. 277362

ENGINE

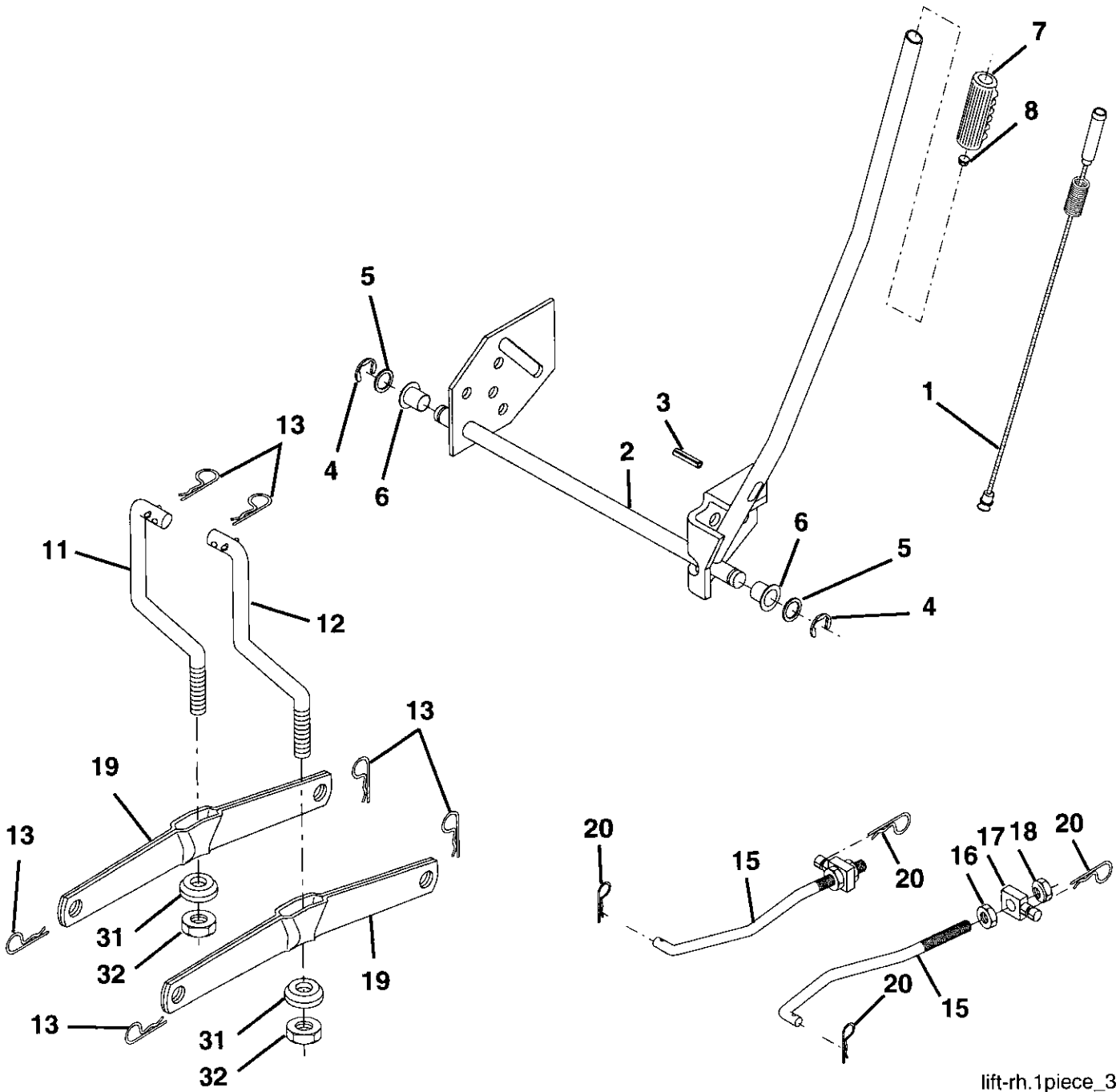
KEY NO.	PART NO.	DESCRIPTION
1	170545	Control, Throttle
2	17720408	Screw, Hex Head, Thread Cutting 1/4-20 x 1/2
3	-----	Engine, Briggs Model 31C707-0240-E1 (See Breakdown)
4	137352	Muffler
13	165291	Gasket
14	148456	Tube Drain Oil Easy
23	169837	Shield Brn/Dbr Guard
25	187770X428	Control Choke
29	137180	Arrestor, Spark
31	184900	Tank, Fuel
32	140527	Cap Assembly, Fuel Sears, Vented
33	123487X	Clamp, Hose
37	137040	Line, Fuel
38	181654	Plug Drain Oil Easy
40	124028X	Bushing, Snap, Fuel Line
44	17670412	Screw, Hex Washer Head, Thd., Roll. 1/4-20 x 3/4
45	17000612	Screw Hxwsh Thdr 3/8-16 x 3/4
46	19091416	Washer 9/32 x 7/8 x 16 Ga.
72	183906	Screw Socket Head 5/16-18 x 1
78	17060620	Screw 3/8-16 x 1-1/4
81	73510400	Nut Keps Hex 1/4-20

NOTE: All component dimensions given in U.S. inches
1 inch = 25.4 mm

REPAIR PARTS

TRACTOR- -MODEL NO. 917. 277362

MOWER LIFT



lift-rh.1piece_3

REPAIR PARTS

TRACTOR- -MODEL NO. 917. 277362

MOWER LIFT

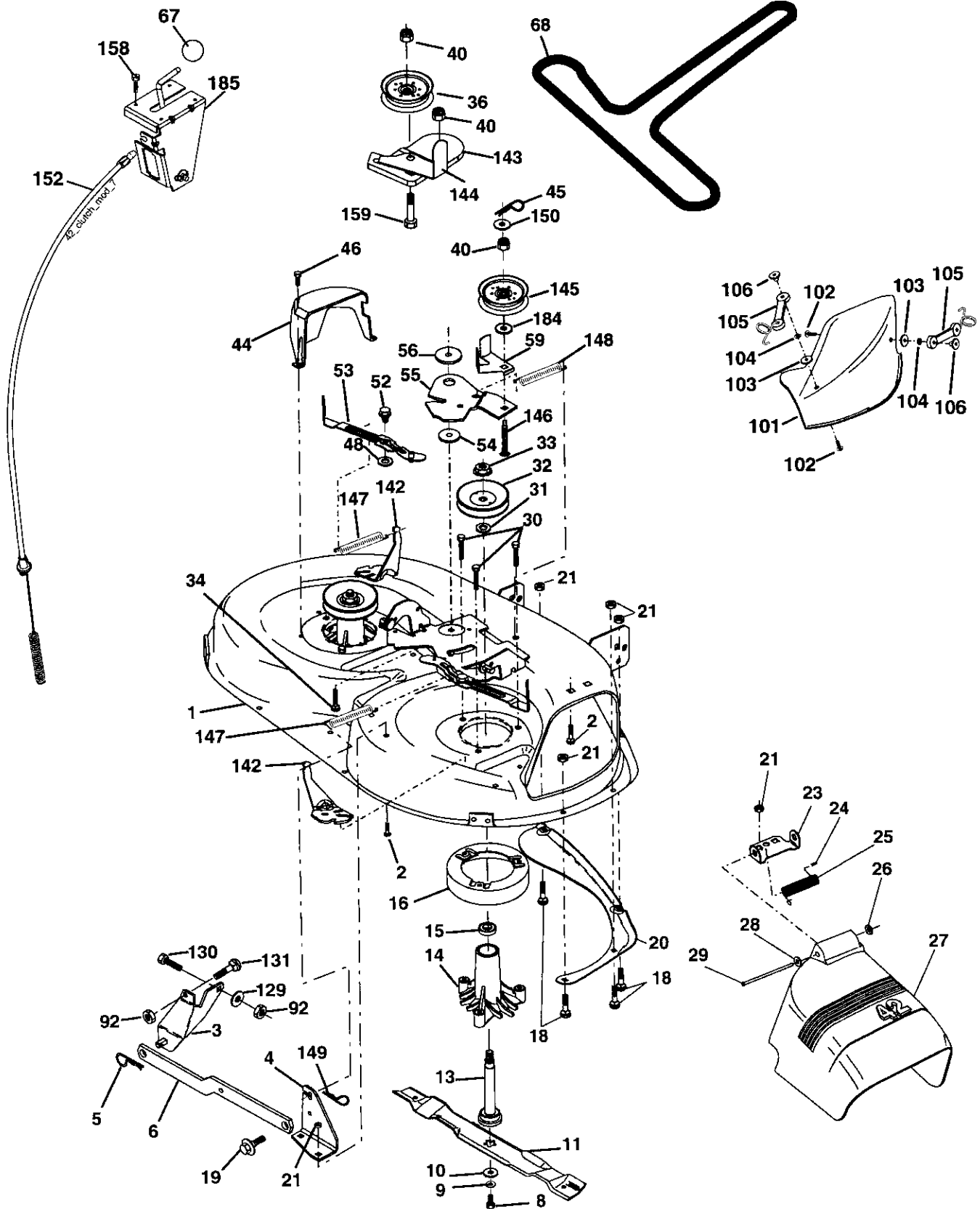
KEY NO.	PART NO.	DESCRIPTION
1	159460	Washer Asm Inner Spring W/Plunger
2	159471	Shaft Asm. Lift
3	105767X	Pin Groove
4	12000002	E Ring #5133-62
5	19211621	Washer 21/32 x 1 x 21 Ga.
6	120183X	Bearing Nylon
7	125631X	Grip Handle Fluted
8	122365X	Button Plunger Read
11	139865	Link Asm Lift L.H.
12	139866	Link Asm Lift R.H.
13	STD624008	Retainer Spring
15	173288	Link Front
16	73350800	Nut Jam Hex 1/2-13 unc
17	175689	Trunnion Blk Zinc
18	73800800	Nut Lock w/Wsh 1/2-13 unc
19	139868	Arm Suspension Mower
20	163552	Retainer Spring
31	169865	Bearing, Pvt. Lift
32	73540600	Nut Crownlock 3/8-24

NOTE: All component dimensions given in U.S. inches
1 inch = 25.4 mm

REPAIR PARTS

TRACTOR--MODEL NO. 917. 277362

MOWER



42_D_man-t-path_stlt_3

REPAIR PARTS

TRACTOR- -MODEL NO. 917. 277362

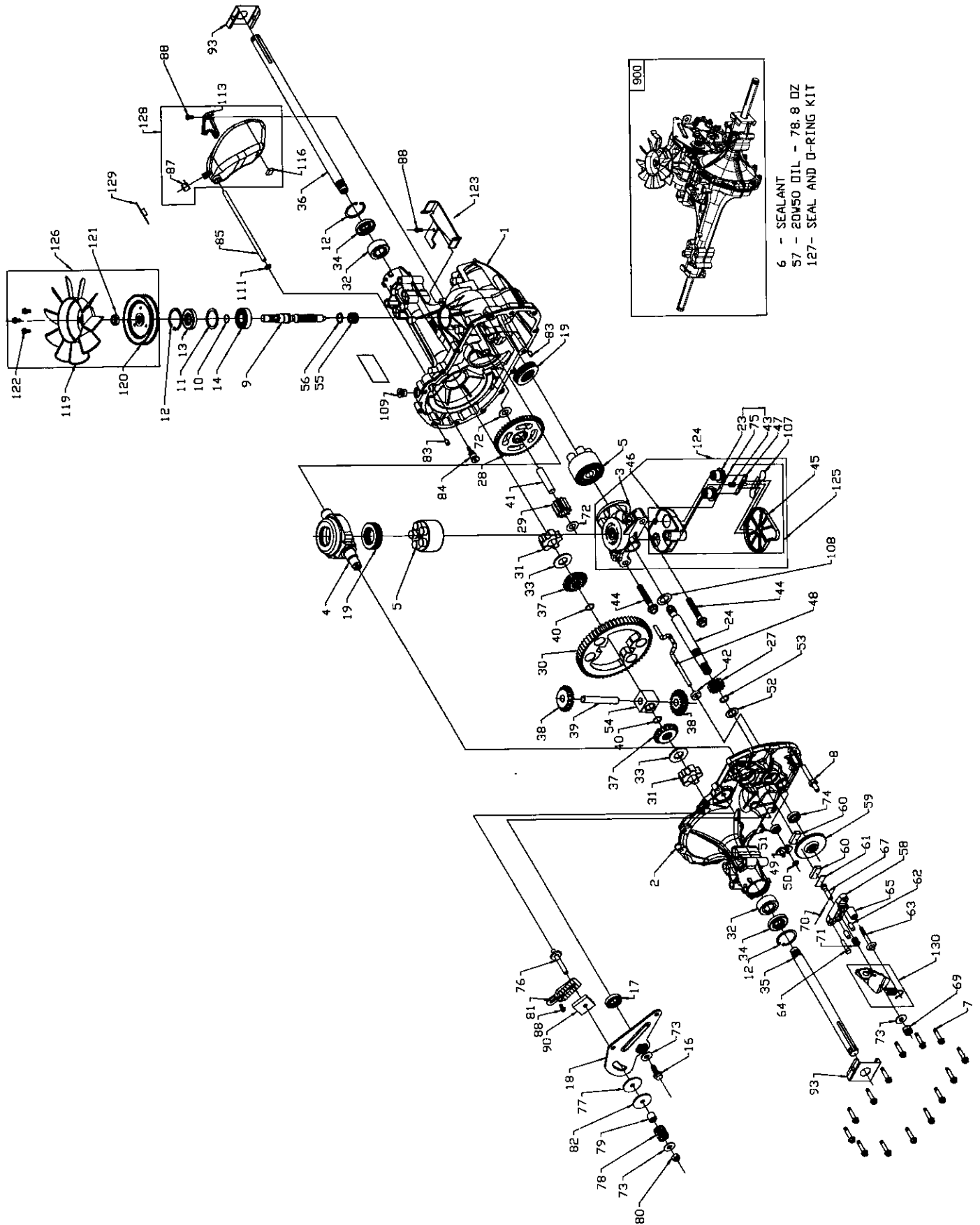
MOWER

KEY NO.	PART NO.	DESCRIPTION	KEY NO.	PART NO.	DESCRIPTION
1	165892	Mower Deck Assembly, 42"	56	165723	Spacer, Retainer
2	STD533107	Bolt	59	141043	Guard, TUV Idler
3	138017	Bracket Assembly, Sway Bar, Front	67	184939	Knob Custom Oval
4	165460	Bracket Sway Bar 38/42" Deck	68	180215	V-Belt
5	STD624008	Retainer Spring	92	STD541437	Nut
6	178024	Bar Sway Deck	101	136420	Mulcher Cover
8	850857	Bolt, Hex 3/8-24 x 1.25 Gr. 8	102	71081010	Screw
9	STD551137	Washer, Lock	103	19061216	Washer #10
10	140296	Washer, Hardened	104	STD551110	Washer, Lock
11	134149	Blade,	105	160793	Latch Assembly, Bagger
13	137645	Shaft Assembly, Mandrel, Vented	106	2029J	Nut, Weld
14	128774	Housing, Mandrel, Vented	129	19131312	Washer 13/32 x 13/16 x 12 Ga.
15	110485X	Bearing, Ball, Mandrel	130	STD523710	Bolt, Fin Hex 3/8-16 unc x 1 Gr. 5
16	174493	Stripper, Vented Mower Deck	131	STD533710	Bolt, Rdhd Sqnk 3/8-16 unc x1
18	72140505	Bolt, Carriage 5/16-18 x 5/8	142	165890	Arm Spring Brake Mower
19	132827	Bolt, Shoulder	143	157109	Bracket Arm Idler 42"
20	159770	Baffle, Vortex	144	158634	Keeper Belt 42" Clutch Cable
21	STD541431	Nut Crownlock 5/16-18 unc	145	165888	Pulley Idler Flat
23	177563	Bracket, Deflector	146	171977	Bolt Carriage Idler
24	105304X	Cap, Sleeve	147	179748	Spring Extension
25	123713X	Spring, Torsion, Deflector	148	169022	Spring Return Idler
26	110452X	Nut, Push	149	165898	Retainer Spring Yellow Zinc
27	130968X428	Shield, Deflector	150	19091210	Washer 9/32 x 3/4 x 10 Ga.
28	19111016	Washer 11/32 x 5/8 x 16 Ga.	152	181555	Cable Clutch 42 In
29	131491	Rod, Hinge	158	17720408	Screw Hex Thd Cut 1/4-20 x 1/2
30	173984	Screw Thdrol Washer Head	159	72140614	Bolt Rdhd Sqn 3/8-16 unc x 3/4
31	187690	Washer, Spacer	184	19131410	Washer 13/13 x7/8 x 10 Ga.
32	153535	Pulley, Mandrel	185	188234	Head Asm Cable Clutch
33	178342	Nut, Toplock, Flanged	--	130794	Mandrel Assembly (Includes Housing, Shaft and Shaft Hardware Only - Pulley Not Included)
34	STD533717	Bolt	--	181268	Replacement Mower, Complete (Std. Deck-Order separately mulcher cover components key nos. 101 - 106).
36	131494	Pulley, Idler, Flat			
40	73900600	Nut Lock 3/8-16			
44	140088	Guard, Mandrel, L.H.			
45	STD624003	Retainer			
46	137729	Screw, Thd. Roll 1/4-20 x 5/8			
48	133944	Washer, Hardened			
52	139888	Bolt, Shoulder 5/16-18 unc			
53	184907	Arm Assembly, Pad, Brake			
54	178515	Washer, Hardened			
55	155046	Arm, Idler			

NOTE: All component dimensions given in U.S. inches
1 inch = 25.4 mm

REPAIR PARTS

TRACTOR- -MODEL NO. 917. 277362
HYDRO GEAR TRANSAXLE - MODEL NUMBER 322-0510



REPAIR PARTS

TRACTOR- -MODEL NO. 917. 277362

HYDRO GEAR TRANSAXLE - MODEL NUMBER 322-0510

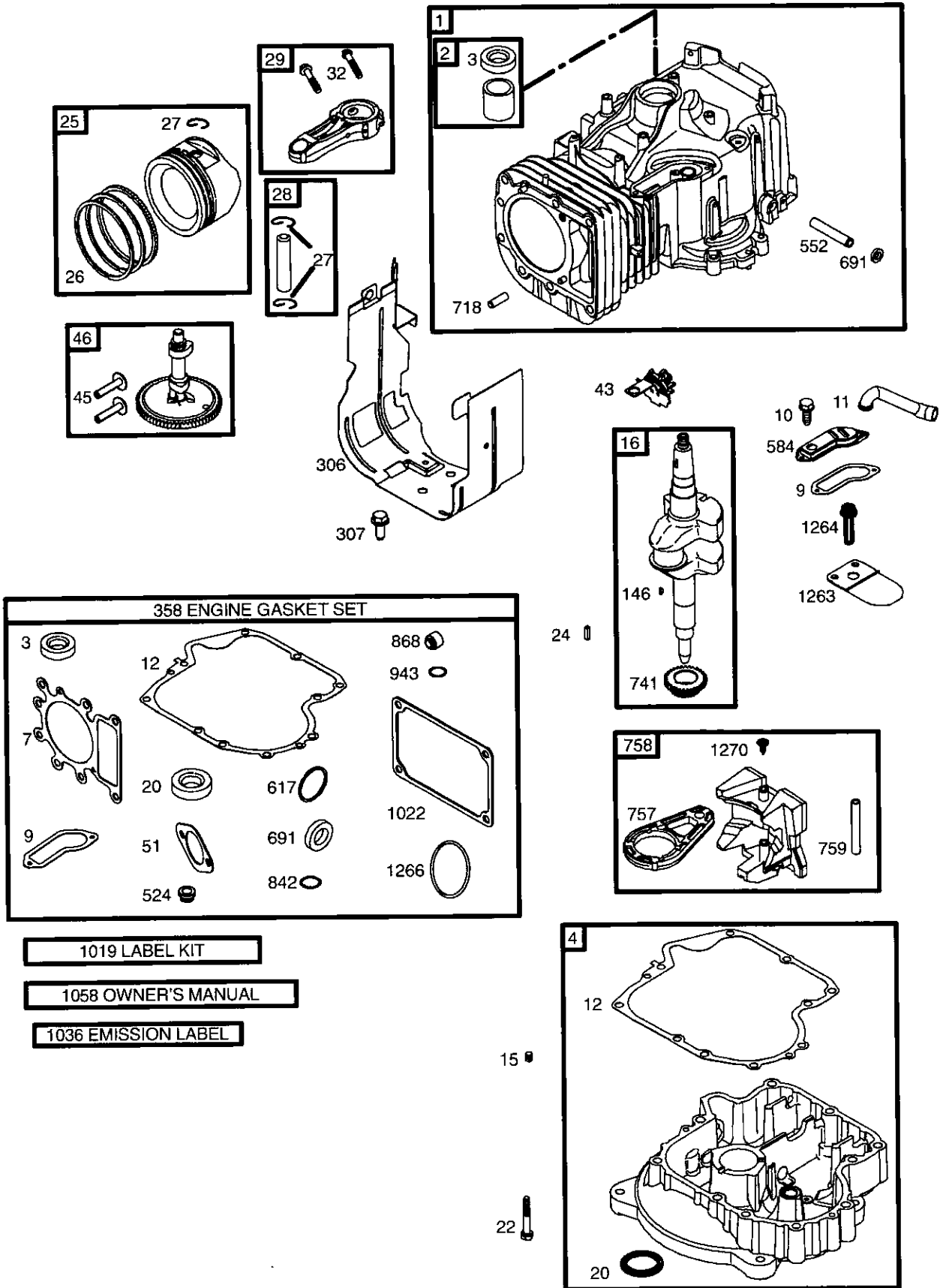
KEY PART NO. NO.	DESCRIPTION	KEY PART NO. NO.	DESCRIPTION
1 170351	Main Housing, Assembly	60 142883	Brake Puck
2 170352	Side Housing, Assembly	61 142882	Puck Plate
3 170353	Center Section, Assembly	62 142887	Brake Actuating Pin
4 170354	Swashplate, Trunion Machined	63 170410	HFHCS 1/4-20X2 W/Patch, Special Flange
5 169898	Block - Assembly		
6 170355	Sealant	64 142892	Bolt, 1/4-20 X 1 W/Patch
7 170356	Hex Flange Screw 1/4-20 X 1.25	65 170411	Spacer
8 170357	Stud, 5/16-24 Hex Double End	66 189386	Spring, Brake Arm Bias
9 170358	Shaft, Input	67 170413	SQ. HD. BOLT 5/16-24-Ribbed
10 170359	Ring - Retaining	68 170414	Arm, Brake
11 170360	Spacer	69 170415	Slotted Hex Nut 5/16-24
12 169870	Ring - Retaining	70 170416	Cotter Pin 3/32 X 3/4
13 170361	Seal, Lip .67 X 1.58 X .276	71 170417	Compression Spring Brake Anti-Drag
14 173158	Ball Brg 17MM ID X 40MM OD X 12MM	72 170418	Washer, HT .5 I.D. X 1 O.D. X .032
16 170362	Hex FLlange Head Screw 5/16-24 X 0.75	73 142884	Flat - Washer 11/32 I.D. X 7/8 O.D.
		74 170419	Oil Seal .625 X 1.0 X .25
17 170363	Lip Seal 18 X 32 X 7	75 170420	Check Plug Assembly, .027, Washer
18 170364	Arm, Control	76 170421	Stud, 5/16-24 Friction Pack
19 173159	Bearing, 30X52X13 Thrust	77 170422	Puck, .330 X 1.50 X .0975
23 170365	Check Plug Assembly, Washer	78 142969	Spring, Helical Comp
24 170366	Shaft, Motor1	79 142980	Spacer
27 170367	Gear - Pinion, 13T	80 150778	Hex Lock Nut 5/16-24 UNJF(Nylon Insert)
28 170368	10T/48T GEAR		
29 170369	Gear, 10T Jackshaft	81 170423	Wedge, Friction Pack
30 170370	60T Bull Gear	82 170424	Clip, Washer .316X1.50X.1046 (Plated)
31 170371	Sleeve Bearing .75 X 1.575 X .625	83 161168	Pin, Standard Headless
	Sleeve Bearing (Outboard).75X1.750X.625	84 170425	Fitting, 5/16 Sae 5/32 Tube
		85 170426	Hose, Expansion Tank
33 142991	Washer, 3/4 ID X 1-1/2 OD X .13 THK	87 173160	Cap, Vent
34 170390	Lip Seal Axle Seal	88 170429	Bolt, Self Tapping 10-32 X 1/2
35 170391	Shaft, Axle .75 X 11.39 (Key, R.H.)	90 170430	Puck, Inner Wedge
36 170392	Shaft, Axle .75 X 16.99 (Key, L.H.)	93 170431	Spring Clip - Housing Thrust
37 150792	Miter Gear (SPLINED)	107 170432	Deflector
38 150793	Miter Gear 15T (0.5 ID)	108 170433	Washer, Motorshaft .71ID X 1.15OD X .030THK
39 150809	Shaft		
40 170393	Ring, Spiral Retaining	109 170434	Plug, Sae #6
41 170394	Pin, Jackshaft	111 170435	O-ring .07 x .301 I.D.
42 170395	Magnet, Rling	113 170437	Bracket, Support Expansion Tank
43 170396	Spring, Bypass	116 170438	Sillicon Sponge
44 150797	Hydro mtg Screw 3/8-24 X 2.5 Long	119 173161	Fan
45 170397	Flilter	120 170440	Pulley
46 170398	Base, Filter	122 173162	#12 T.F. Screw-Indented Hex Washer Head
47 170399	Actuator, Bypass		
48 170400	Rod, Bypass Actuator	123 173163	Bracket Belt Keeper
49 170401	Arm, Bypass	124 170444	Center Section-Filter-Bypass Assembly
50 170402	Retaining Ring .250 External	125 170445	Filter Assembly
51 170403	Seal, Lip .741 X .250 X .250 TC	126 173164	Fan - Pulley Service Aassembly
52 170404	Flat Washer, 5/8 ID X 1.0 OD X .05 THK	127 170447	Seal - O-ring Kit
53 170405	Retaining Ring	128 173165	Kit, Expansion Tank
54 170406	Bearing, Center Block	900 171613	Transaxle, complete
55 142977	Spring - Helical Compression		
56 142978	Washer		
57 - - - - -	20W-50 OIL 72.8 oz		
58 170407	Brake Yoke		
59 170408	Rotor, Brake		

NOTE: All component dimensions given in U.S. inches 1 inch = 25.4 mm

REPAIR PARTS

TRACTOR- -MODEL NO. 917. 277362

BRIGGS & STRATTON ENGINE - - MODEL NUMBER 31C707, TYPE NUMBER 0240-E1



1019 LABEL KIT

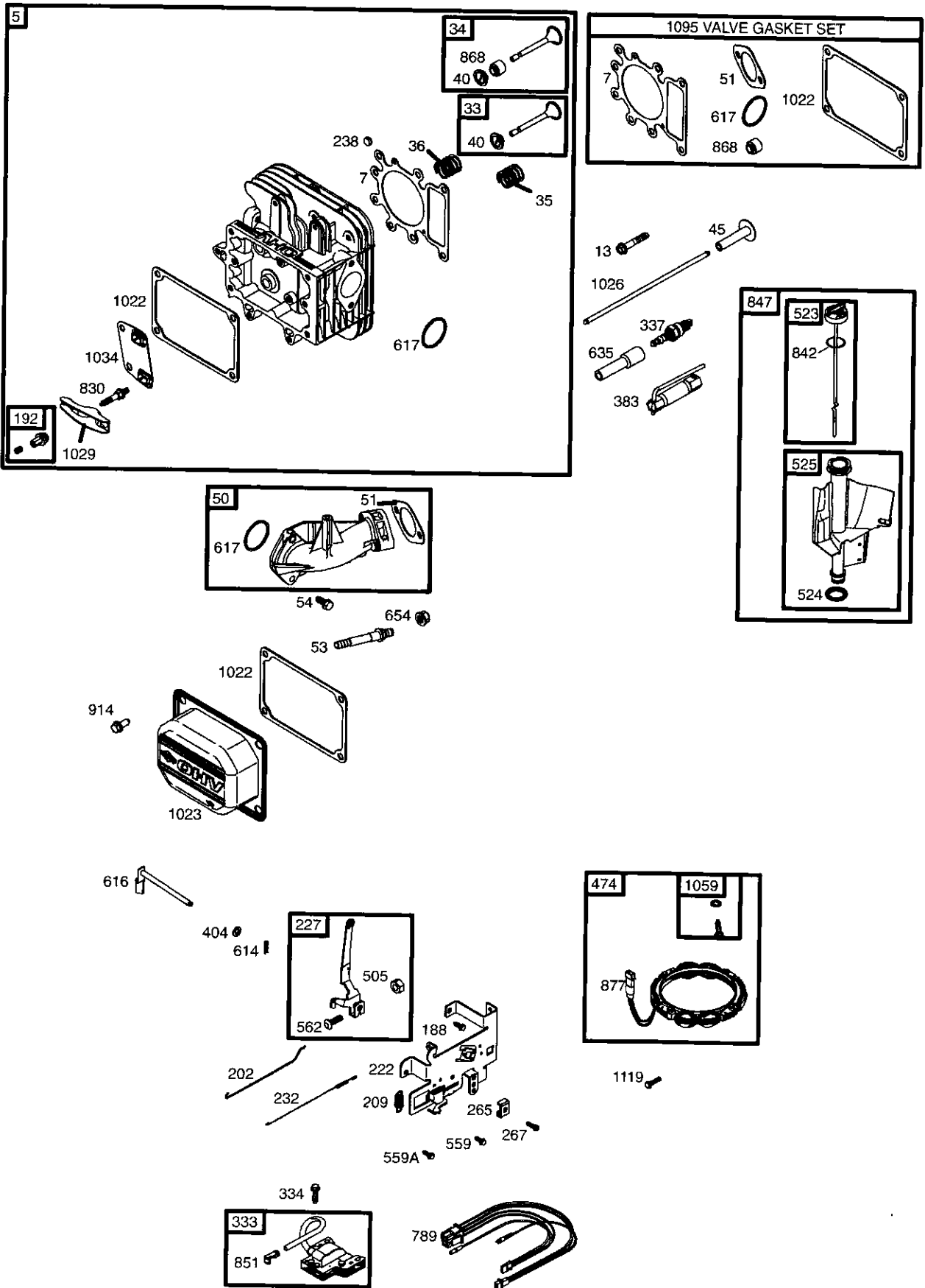
1058 OWNER'S MANUAL

1036 EMISSION LABEL

REPAIR PARTS

TRACTOR- -MODEL NO. 917. 277362

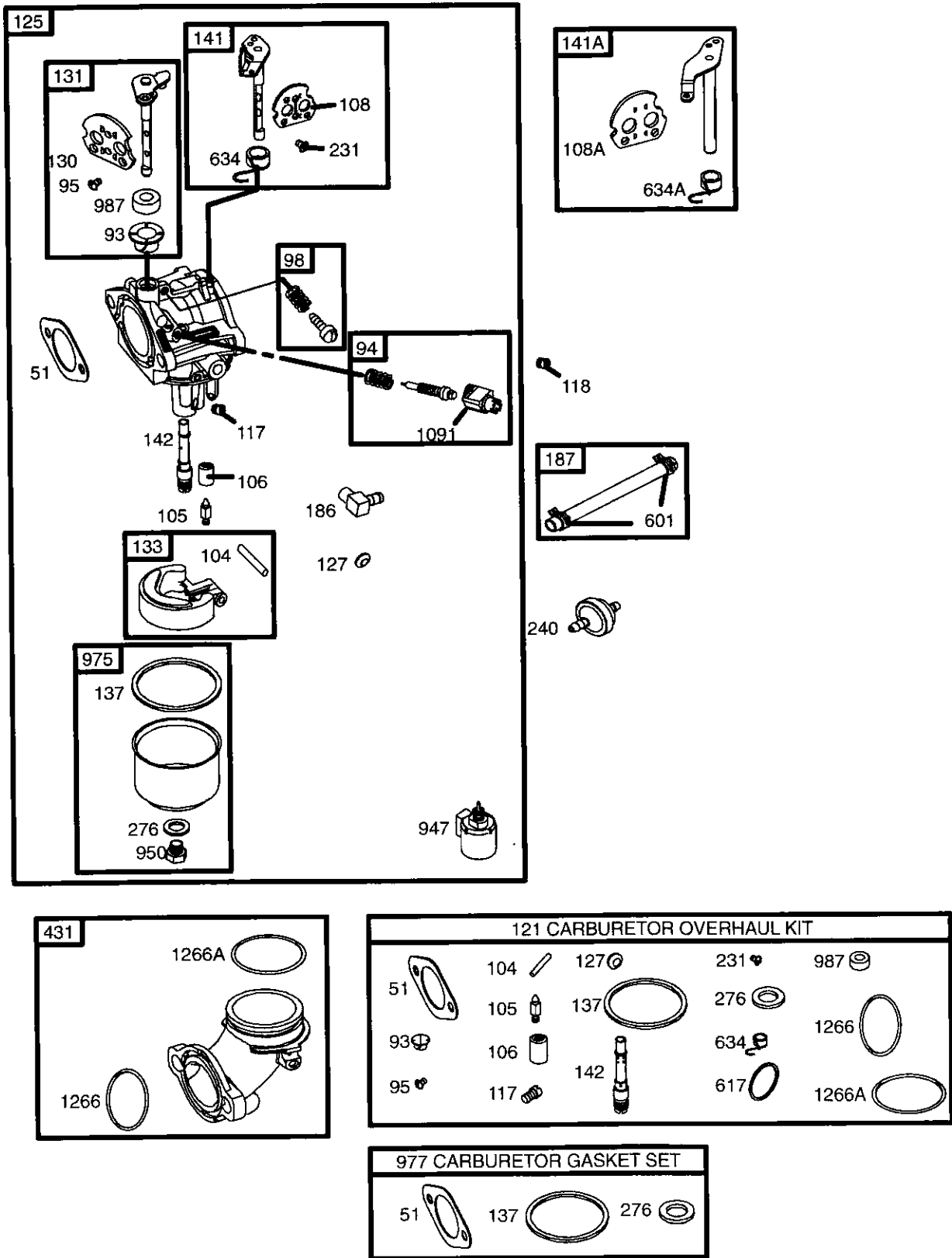
BRIGGS & STRATTON ENGINE - - MODEL NUMBER 31C707, TYPE NUMBER 0240-E1



REPAIR PARTS

TRACTOR- -MODEL NO. 917. 277362

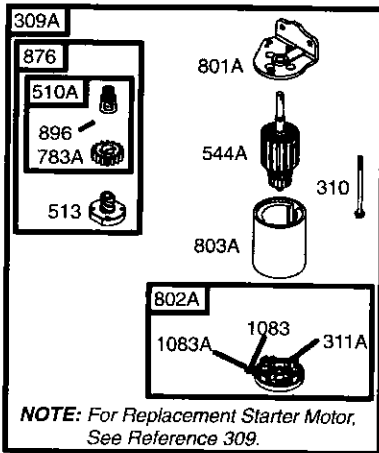
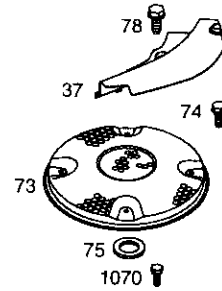
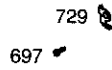
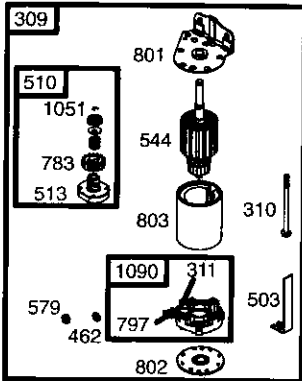
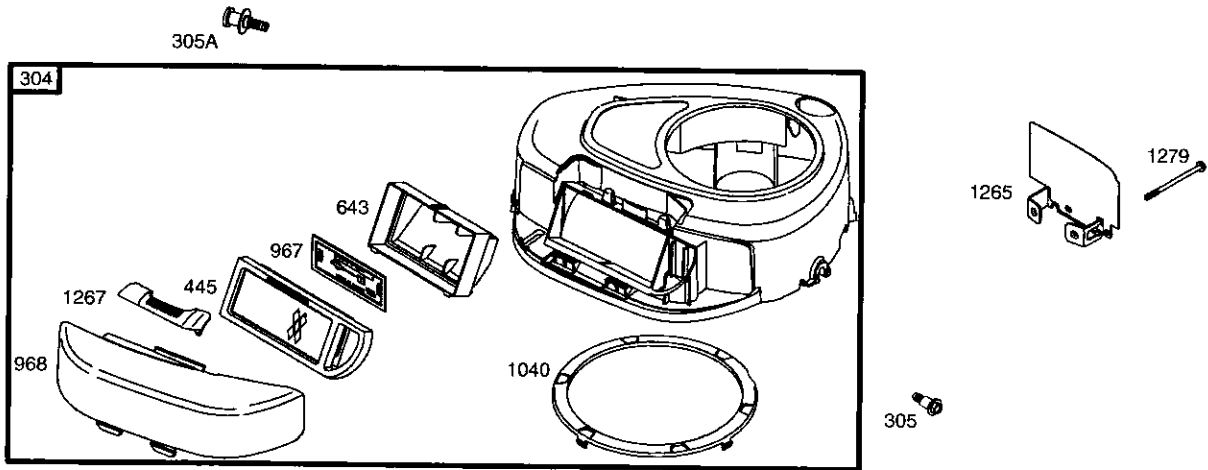
BRIGGS & STRATTON ENGINE - - MODEL NUMBER 31C707, TYPE NUMBER 0240-E1



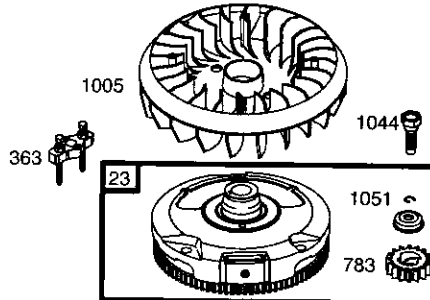
REPAIR PARTS

TRACTOR- -MODEL NO. 917. 277362

BRIGGS & STRATTON ENGINE - - MODEL NUMBER 31C707, TYPE NUMBER 0240-E1



NOTE: For Replacement Starter Motor, See Reference 309.



REPAIR PARTS

TRACTOR- -MODEL NO. 917. 277362

BRIGGS & STRATTON ENGINE - - MODEL NUMBER 31C707, TYPE NUMBER 0240-E1

KEY NO.	PART NO.	DESCRIPTION	KEY NO.	PART NO.	DESCRIPTION
1	697174	Cylinder Assembly	118	697492	Jet-Main (High Altitude)
2	399265	Kit-Bushing/Seal (Magneto Side)	121	697241	Kit-Carburetor Overhaul
3	391086	• Seal-Oil (Magneto Side)	125	697190	Carburetor
4	697106	Sump-Engine	127	695005	Plug-Welch
5	698147	Head-Cylinder	130	691750	Valve-Throttle
7	692410	•+ Gasket-Cylinder Head	131	494379	Kit-Throttle Shaft
9	697109	• Gasket-Breather	133	494381	Float-Carburetor
10	697157	Screw (Breather Assembly)	137	281165	Ø‡ Gasket-Float Bowl
11	697113	Tube-Breather	141	495097	Kit-Choke Shaft (Manual Choke)
12	697110	• Gasket-Crankcase	141A	495931	Kit-Choke Shaft (Choke A Matic)
13	690360	Screw (Cylinder Head)	142	697140	Ø Nozzle-Carburetor
15	690946	Plug-Oil Drain	146	691639	Key-Timing
16	697127	Crankshaft	186	692317	Connector-Hose
20	690947	• Seal-Oil (PTO Side)	187	691050	Line-Fuel (Cut to Required Length)
22	692125	Screw (Crankcase Cover/Sump)	188	691693	Screw (Control Bracket)
23	693557	Flywheel	192	691986	Adjuster-Rocker Arm
24	222698	Key-Flywheel	202	691841	Link-Mechanical Governor
25	697159	Piston Assembly (Standard)	209	692208	Spring-Governor
	697160	Piston Assembly (.010" Oversize)	222	694042	Bracket-Control
	697162	Piston Assembly (.020" Oversize)	227	691374	Lever-Governor Control
	697163	Piston Assembly (.030" Oversize)	231	691636	Screw (Choke Valve)
26	697164	Ring Set (Standard)	232	691842	Spring-Governor
	697165	Ring Set (.010" Oversize)	238	691843	Cap-Valve
	697171	Ring Set (.020" Oversize)	240	394358	Filter-Fuel
	697172	Ring Set (.030" Oversize)	265	691024	Clamp-Casing
27	697100	Lock-Piston Pin	267	695134	Screw (Casing Clamp)
28	697099	Pin-Piston	276	692255	Ø‡ Washer-Sealing
29	697126	Rod-Connecting (Standard)	304	698402	Housing-Blower
32	692852	Screw (Connecting Rod)	305	697102	Screw (Blower Housing)
33	495856	Valve-Exhaust	305A	697103	Screw (Blower Housing)
34	495857	Valve-Intake	306	697107	Shield-Cylinder
35	691279	Spring-Valve (Intake)	307	691003	Screw (Cylinder Shield)
36	691279	Spring-Valve (Exhaust)	309	693551	Motor-Starter
37	697352	Guard-Flywheel	309A	---	Motor-Starter (For Replacement Starter Motor, See Reference 309)
40	691752	Retainer-Valve	310	690323	Bolt (Starter Motor)
43	691968	Slinger-Governor/Oil	311	497608	Brush Set
45	690564	Tappet-Valve	311A	395538	Brush Set
46	697687	Camshaft	333	492341	Armature-Magneto
48	697761	Short Block (31C707-0240-E2 Replacement Engine-art not available)	334	691061	Screw (Magneto Armature)
	690193	Manifold-Intake	337	691043	Plug-Spark
50	692137	•Ø‡+ Gasket-Intake	358	697191	Gasket Set-Engine
51	690227	Stud (Carburetor)	363	19203	Flywheel Puller
53	691148	Screw (Intake Manifold)	383	89838	Wrench-Spark Plug
54	697384	Screen-Rotating	404	691691	Washer (Governor Crank)
73	697384	Screw (Rotating Screen)	431	697122	Elbow-Intake
74	697987	Washer (Flywheel)			RPM Settings: Low Speed: 1900-2100 High Speed: 3000-3200
75	690582	Screw (Flywheel Guard)			
77	691003	Ø Bushing-Throttle Shaft			
78	498030	Kit-Idle Mixture			
80	691636	Screw (Throttle Valve)			
81	495800	Kit-Idle Speed			
104	690525	Ø Pin-Float Hinge			
105	231855	Ø Valve-Float Needle			
106	690577	Ø Seat-Inlet			
108	690464	Valve-Choke (Manual Choke)			
108A	692344	Valve-Choke (Choke A Matic)			
117	694352	Ø Jet-Main (Standard)			

NOTE: All component dimensions given in U.S. inches 1 inch = 25.4 mm

LIMITED WARRANTY ON CRAFTSMAN RIDING EQUIPMENT

For two (2) years from the date of purchase, if this Craftsman Riding Equipment is maintained, lubricated and tuned up according to the instructions in the owner's manual, Sears will repair or replace free of charge any parts that are found to be defective in material or workmanship according to the guidelines of coverage listed below. Sears will also provide free labor for these applicable warranted parts for the two full years. During the first 30 days of purchase, there will be no charges to service the product at your home for issues covered by this warranty. (See exclusions below). For your convenience, IN HOME warranty service will still be available after the first 30 days of purchase, but a trip charge will apply. This charge will be waived if the Craftsman product is dropped off at an authorized Sears location. For the nearest authorized Sears location, please call 1-800-4-MY-HOME®. This warranty applies only while this product is within the United States.

This Warranty does not cover:

- Expendable items which become worn during normal use, including but not limited to blades, spark plugs, air cleaners, belts, and oil filters.
- Standard Maintenance Servicing, oil changes, or tune-ups
- Tire replacement or repair caused by punctures from outside objects, such as nails, thorns, stumps, or glass.
- Repairs necessary because of operator abuse, including but not limited to, damage caused by towing objects beyond the capability of the riding equipment, impacting objects that bend the frame or crankshaft, or over-speeding the engine.
- Repairs necessary because of operator negligence, including but not limited to, electrical and mechanical damage caused by improper storage, failure to use the proper grade and amount of engine oil, failure to keep the deck clear of flammable debris, or failure to maintain the equipment according to the instructions contained in the owner's manual.
- Engine (fuel system) cleaning or repairs caused by fuel determined to be contaminated or oxidized (stale). In general, fuel should be used within 30 days of its purchase date.
- Normal deterioration and wear of the exterior finishes, or product label replacement.
- Riding equipment used for commercial or rental purposes.

LIMITED WARRANTY ON BATTERY

For ninety (90) days from date of purchase, if any battery included with this riding equipment proves defective in material or workmanship and our testing determines the battery will not hold a charge, Sears will replace the battery at no charge. During the first 30 days of purchase, there will be no charges to replace the battery at your HOME. After the first 30 days, for your convenience, IN-HOME warranty service will still be available but a trip charge will apply. This charge will be waived if the Craftsman product is dropped off at an authorized Sears location. For the nearest authorized Sears location, please call 1-800-4-MY-HOME®.

This battery warranty applies only while this product is within the United States.

This warranty gives you specific legal rights, and you may also have other rights, which vary, from state to state.

Sears, Roebuck and Co., Dept. 817WA, Hoffman Estates, IL 60179

