

REPAIR PARTS MANUAL
MODEL NO. 277390
Lawn Tractor

CRAFTSMAN®

HOW TO USE THIS MANUAL

This manual is designed to provide the customer with a means to identify the parts on his/her tractor when ordering repair parts. The illustrations may or may not represent the actual assemblies; therefore, it is not recommended to use this manual as a guide to assemble or disassemble the tractor. Some hardware and parts are drawn larger in order to more readily identify them.

Each tractor has its own model number.

The model number for your tractor can be found on the fender under the seat.

When ordering parts, always give the following information:

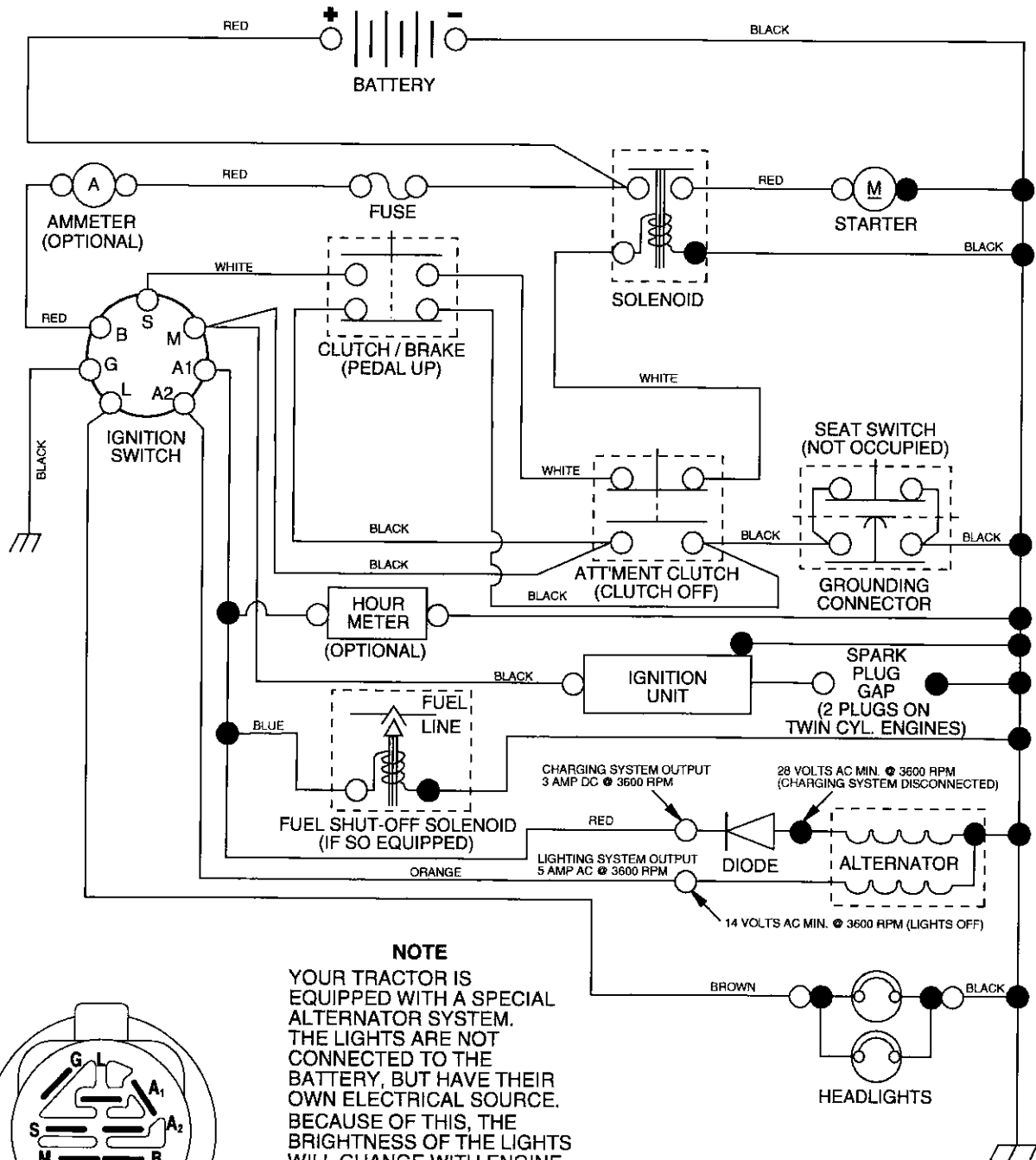
- Product - "Tractor"
- Model Number - "277390"
- Part Number
- Part Description

TABLE OF CONTENTS

| | |
|------------------------------|--------------|
| SCHEMATIC | 3 |
| ELECTRICAL..... | 4-5 |
| CHASSIS..... | 6-7 |
| DRIVE..... | 8-9 |
| STEERING | 10-11 |
| SEAT | 12 |
| DECALS..... | 13 |
| ENGINE..... | 14-15 |
| MOWER LIFT | 16-17 |
| MOWER DECK | 18-19 |
| TRANSAXLE..... | 20-21 |
| ENGINE BREAKDOWN..... | 22-27 |
| WARRANTY..... | 28 |

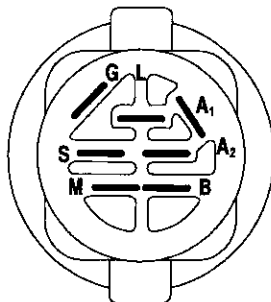
TRACTOR- -MODEL NO. 917. 277390

SCHEMATIC



NOTE

YOUR TRACTOR IS EQUIPPED WITH A SPECIAL ALTERNATOR SYSTEM. THE LIGHTS ARE NOT CONNECTED TO THE BATTERY, BUT HAVE THEIR OWN ELECTRICAL SOURCE. BECAUSE OF THIS, THE BRIGHTNESS OF THE LIGHTS WILL CHANGE WITH ENGINE SPEED. AT IDLE THE LIGHTS WILL DIM. AS THE ENGINE IS SPEEDED UP, THE LIGHTS WILL BECOME THEIR BRIGHTEST.



IGNITION SWITCH

| POSITION | CIRCUIT | "MAKE" |
|-----------|------------|--------|
| OFF | M+G+A1 | NONE |
| RUN/LIGHT | B+A1 | A2+L |
| RUN | B+A1 | NONE |
| START | B + S + A1 | NONE |

WIRING INSULATED CLIPS

NOTE: IF WIRING INSULATED CLIPS WERE REMOVED FOR SERVICING OF UNIT, THEY SHOULD BE REPLACED TO PROPERLY SECURE YOUR WIRING.

02363

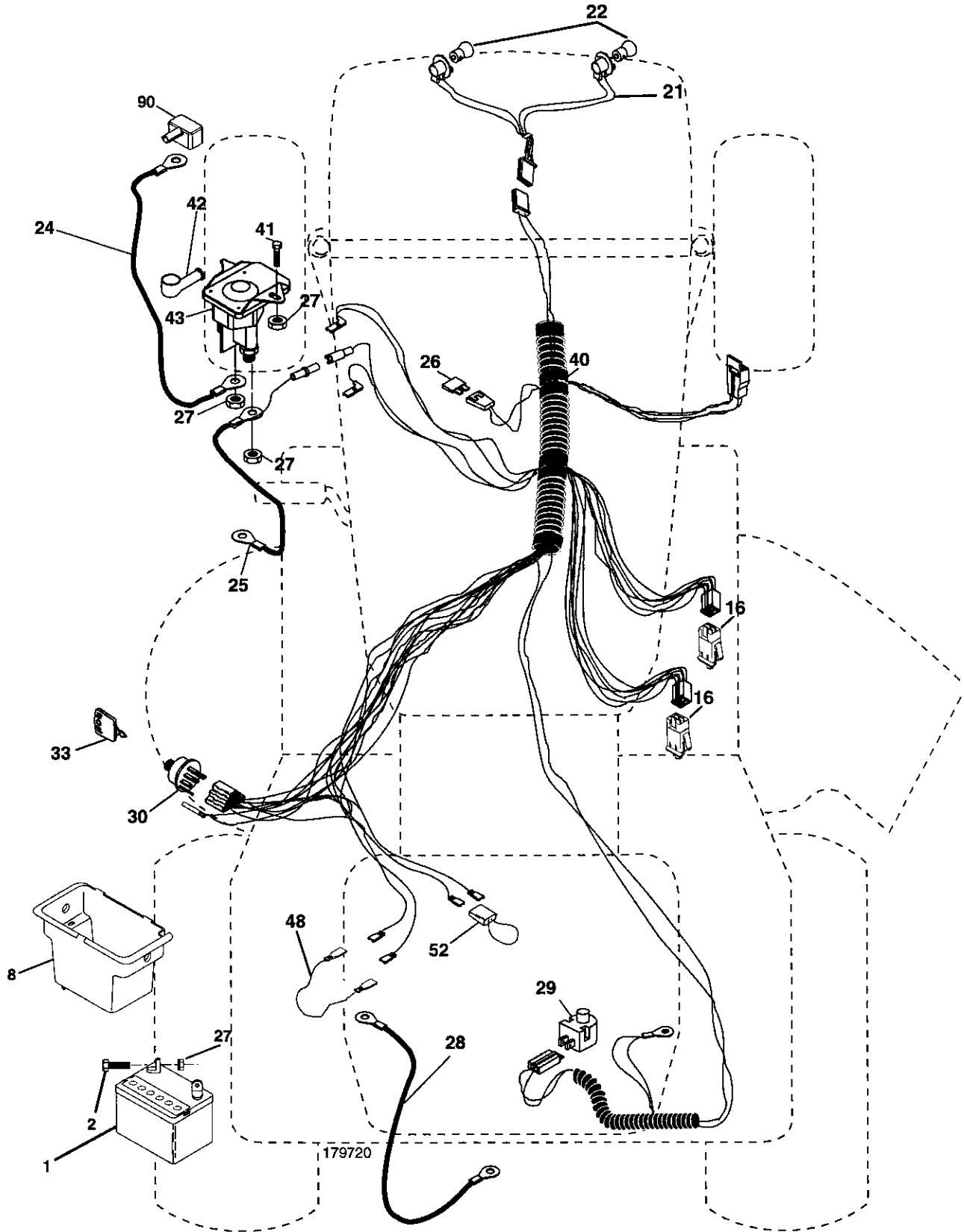
NON-REMOVABLE CONNECTIONS

REMOVABLE CONNECTIONS

REPAIR PARTS

TRACTOR- -MODEL NO. 917. 277390

ELECTRICAL



REPAIR PARTS

TRACTOR- -MODEL NO. 917. 277390

ELECTRICAL

| KEY NO. | PART NO. | DESCRIPTION |
|---------|----------|------------------------------------|
| 1 | 163465 | Battery |
| 2 | 74760412 | Bolt Hex Hd 1/4-20 unc x 3/4 |
| 8 | 176689 | Box Battery Fender |
| 16 | 176138 | Switch, Interlock |
| 21 | 183759 | Harness Asm Light W/4152j |
| 22 | 4152J | Bulb Light #1156 |
| 24 | 4799J | Cable Battery 6 Ga. 11" red |
| 25 | 146147 | Cable Battery 6 Ga. w/16 wire red |
| 26 | 175158 | Fuse 20 AMP |
| 27 | 73510400 | Nut, Keps Hex 1/4-20 unc |
| 28 | 4207J | Cable Ground 6 Ga. 12" black |
| 29 | 121305X | Switch Seat |
| 30 | 175566 | Switch Ign |
| 33 | 140403 | Key Ign Molded Craftsman |
| 40 | 179720 | Harness Ign |
| 41 | 71110408 | Bolt Blk. Fin Hex 1/4-20 unc x 1/2 |
| 42 | 131563 | Cover Terminal Red |
| 43 | 192507 | Solenoid |
| 48 | 140844 | Adapter Ammeter |
| 52 | 141940 | Protection Wire Loop |
| 90 | 180449 | Cover Battery Terminal |

NOTE: All component dimensions give in U.S. inches
1 inch = 25.4 mm

REPAIR PARTS

TRACTOR- -MODEL NO. 917. 277390

CHASSIS AND ENCLOSURES

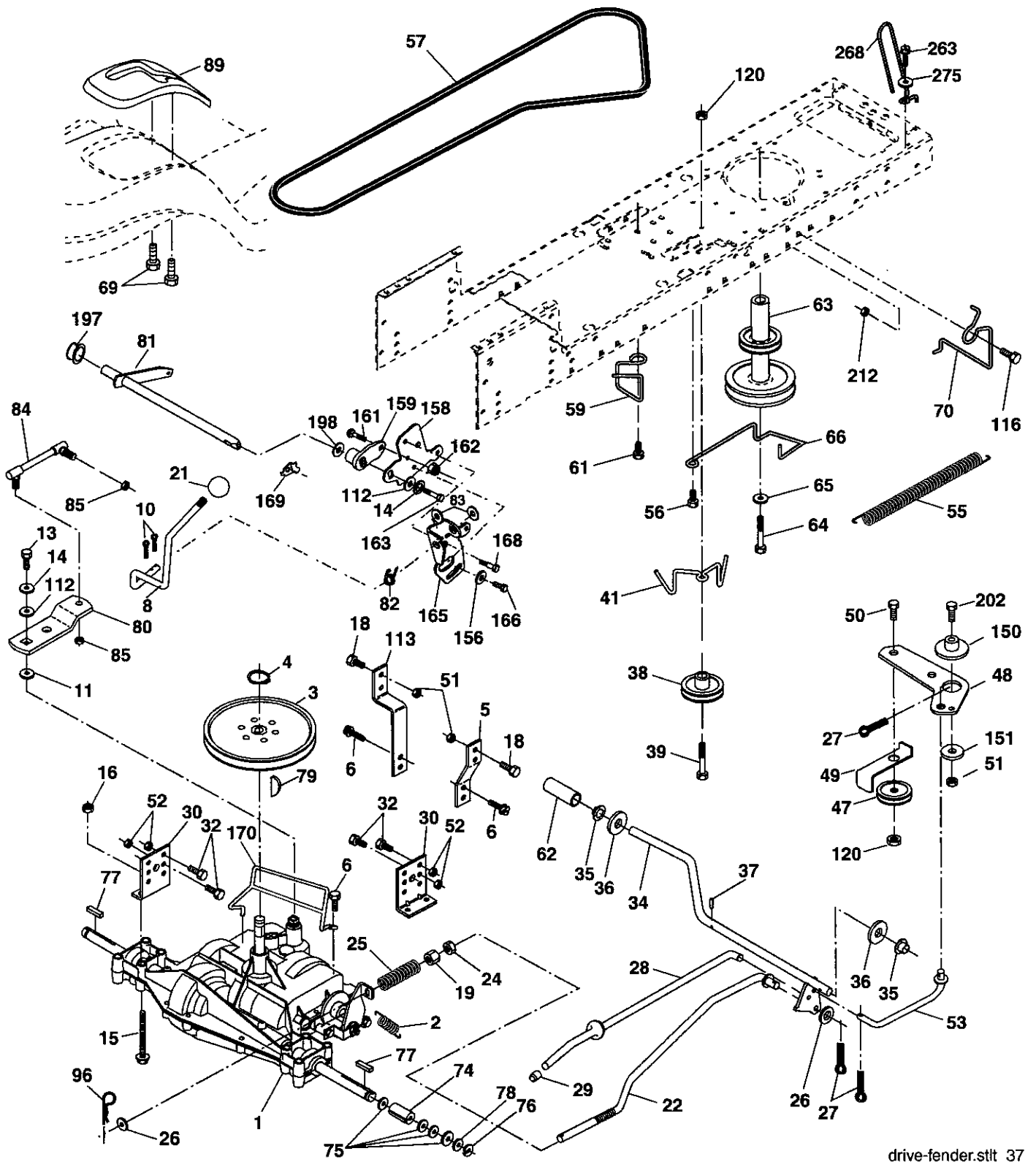
| KEY NO. | PART NO. | DESCRIPTION |
|---------|------------|---------------------------------------------------------|
| 1 | 174619 | Chassis Stamping |
| 2 | 176554 | Drawbar |
| 5 | 155272 | Bumper Hood/Dash |
| 9 | 193510X013 | Dash |
| 10 | STD533710 | Bolt, Carriage 3/8-16 x 1 |
| 11 | 174996 | Panel, Dash, L.H. |
| 13 | 172105X010 | Panel, Dash, R.H. |
| 14 | 17490608 | Screw Thdrol 3/8-16 x 1/2 |
| 17 | 185682X613 | Hood Assembly Laser |
| 18 | 184921 | Bumper Hood Large 1.75 |
| 24 | STD523710 | Bolt Fin Hex 3/8-16 unc x 1 Gr. 5 |
| 25 | 19131312 | Washer 13/32 x 13/16 x 12 Ga. |
| 26 | STD541437 | Nut |
| 28 | 193258 | Grille Lens Asm Laser (Includes Key Nos. 29 and 212) |
| 29 | 174332X599 | Lens, Laser |
| 30 | 192526X613 | Fend/Ftrest Pnt STLT |
| 31 | 136619 | Bracket, Fender Support |
| 33 | 179716X613 | Footrest LH |
| 34 | 179717X613 | Footrest RH |
| 35 | STD533707 | Bolt Rdhd Sht Sqnk 3/8-16 x 3/4 |
| 37 | 17490508 | Screw Thdrol 5/16-18 x 1/2 Tyt |
| 38 | 175710 | Bracket Asm. Pivot Mower Rear |
| 39 | 174714 | Bracket Pivot Laser |
| 64 | 154798 | Dash Lower |
| 142 | 175702 | Plate Reinforcement |
| 145 | 156524 | Jod Pivot Chassis/Hood |
| 206 | 170165 | Bolt Shoulder 5/16 -18 TT |
| 207 | 17670508 | Screw 5/16-18 x 1/2 |
| 208 | 17670608 | Screw Thdrol 3/8-16 x 1/2 |
| 209 | 17000612 | Screw Hex Wsh Thdr 3/8-16 x 3/4 |
| 212 | 175143 | Insert Lens Reflective |
| 278 | 191611 | Screw 10 x 3/4 Single Head-Hex |
| -- | 5479J | Plug, Button |
| -- | 193640X428 | Plug Switch Light |

NOTE: All component dimensions given in U.S. inches
1 inch = 25.4 mm

REPAIR PARTS

TRACTOR- -MODEL NO. 917. 277390

DRIVE



drive-fender.stlit_37

REPAIR PARTS

TRACTOR- -MODEL NO. 917. 277390

DRIVE

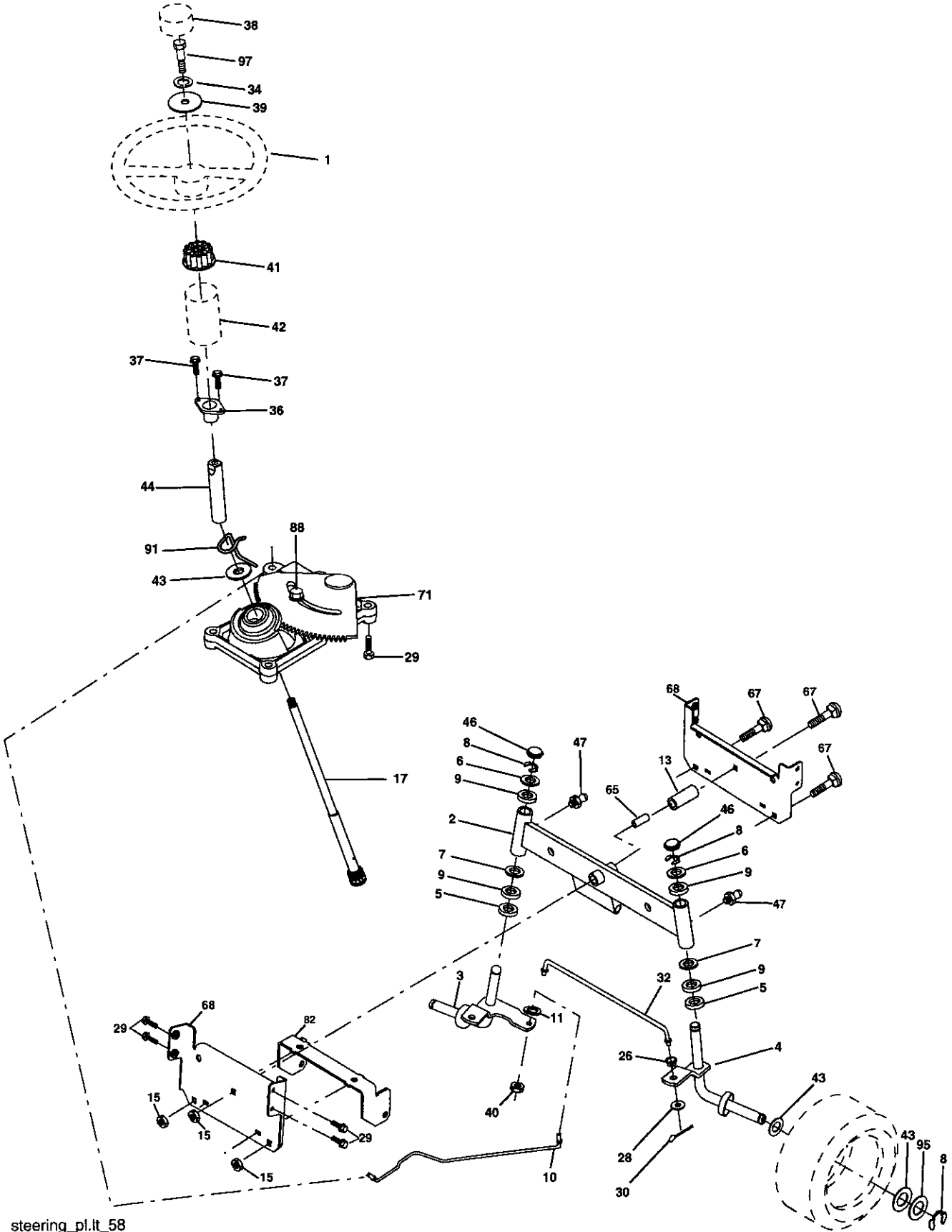
| KEY NO. | PART NO. | DESCRIPTION | KEY NO. | PART NO. | DESCRIPTION |
|---------|-----------|---------------------------------------------|---------|------------|-----------------------------------|
| 1 | ----- | Transaxle Dana D4360-139 (See Breakdown) | 64 | 173937 | Bolt Hex 7/16-20 x 4 Gr. 5-1.5 |
| 2 | 146682 | Spring Brake Return | 65 | STD551143 | Washer |
| 3 | 123666X | Pulley Transaxle | 66 | 154778 | Keeper Belt Engine Hydro |
| 4 | 12000028 | Ring Retainer | 69 | 142432 | Screw Hex Wsh Hi-Lo 1/4 x 1/2 unc |
| 5 | 121520X | Strap Torque 30 Degrees | 70 | 180218 | Keeper Belt Engine |
| 6 | 17000512 | Screw 5/16-18 x 3/4 | 74 | 109502X | Spacer |
| 8 | 192706 | Rod Shift Fender Adjust | 75 | 121749X | Washer 25/32 x 1-1/4 x 16 Ga. |
| 10 | STD561210 | Pin Cotter 1/8 x 1 CAD | 76 | STD581075 | E-Ring |
| 11 | 105701X | Washer Plate Shift | 77 | 123583X | Key, Square |
| 13 | 74550412 | Bolt 1/4-28 unf Gr. 8 W/Patch | 78 | 121748X | Washer 25/32 x 1-5/8 x 16 Ga. |
| 14 | 10040400 | Washer Lock Hvy Helical | 79 | 2228M | Key Woodruff |
| 15 | 74490544 | Bolt Hex FLGHD 5/16-18 x Gr. 5 | 80 | 131488 | Arm Shift |
| 16 | STD541431 | Nut Lock Hex W/Ins. 5/16-18 unc | 81 | 165594 | Shaft Asm Cross Tapered |
| 18 | 74780616 | Bolt Fin Hex 3/8-16 x 1 Gr. 5 | 82 | 165711 | Spring Torsion |
| 19 | STD541437 | Nut Lock Hex W/Wsh 3/8-16 unc | 83 | 19171216 | Washer 17/32 x 3/4 x 16 Ga. |
| 21 | 106933X | Knob | 84 | 166229 | Link Transaxle |
| 22 | 130804 | Rod, Brake | 85 | 150360 | Nut Lock Center 1/4-20 |
| 24 | 73350600 | Nut, Hex Jam 3/8-16 unc | 89 | 192054X428 | Console, Shift |
| 25 | 106888X | Spring, Brake Rod | 96 | 4497H | Retainer Spring 1" Zinc/Cad |
| 26 | STD551037 | Washer 13/32 x 13/16 Ga. | 112 | 19091210 | Washer 9/32 x 3/4 x 10 Ga. |
| 27 | STD561210 | Pin Cotter 1/8 x 3/4 CAD. | 113 | 127285X | Strap Torque 90 Degrees |
| 28 | 175765 | Rod, Parking Brake | 116 | 72140608 | Bolt Rdhd Sqneck 3/8-16 x 1.25 |
| 29 | 71673 | Cap, Parking Brake | 120 | 73900600 | Nut Lock Flg 3/8-16 |
| 30 | 174973 | Bracket, Transaxle | 150 | 175456 | Spacer Retainer |
| 32 | 74760512 | Bolt Hex Hd 5/16-18 unc x 3/4 | 151 | 19133210 | Washer 13/32 x 2 x 10 Ga. |
| 34 | 175578 | Shaft, Foot Pedal | 156 | 166002 | Washer Srrted 5/16 ID x 1.125 |
| 35 | 120183X | Bearing, Nylon | 158 | 165589 | Bracket Shift Mount |
| 36 | 19211616 | Washer | 159 | 183900 | Hub Shift |
| 37 | 1572H | Pin, Roll | 161 | 72140406 | Bolt Rdhd Sqnk 1/4-20 x 3/4 Gr. 5 |
| 38 | 179114 | Pulley, Composite, Flat | 162 | 73680400 | Nut Crownlock 1/4-20 unc |
| 39 | 72110622 | Bolt Fin Hex 3/8-16 x 2-3/4 | 163 | 74780416 | Bolt Hex Fin 1/4-20 unc x 1 Gr. 5 |
| 41 | 175556 | Keeper, Belt Idler | 165 | 165623 | Bracket Pivot Lever |
| 47 | 127783 | Pulley, Idler, V-Groove | 166 | 17490510 | Screw 5/16-18 x 5/8 |
| 48 | 154407 | Bellcrank, Clutch | 168 | 165492 | Bolt Shoulder 5/16-18 x .561 |
| 49 | 123205X | Retainer, Belt | 169 | 165580 | Plate Fastening |
| 50 | 72110612 | Bolt Carr 3/8-16 x 1-1/2 | 170 | 187414 | Keeper Belt T/A |
| 51 | STD541437 | Nut Crownlock 3/8-16 unc | 197 | 169613 | Nyliner Snap-In 5/8"ID |
| 52 | STD541431 | Nut, Crownlock 5/16-18 unc | 198 | 169593 | Washer Nyl |
| 53 | 105710X | Link, Clutch | 202 | 72110614 | Bolt Carr Sh 3/8-16 x 1-3/4 Gr. 5 |
| 55 | 105709X | Spring, Return, Clutch | 212 | 145212 | Nut Hex Flg. Lock |
| 56 | 17060620 | Screw 3/8-16 x 1-1/4 | 263 | 17000612 | Screw Hexwsh Thdr 3/8-16 x 3/4 |
| 57 | 160855 | V-Belt | 268 | 182402 | Guard Muffler |
| 59 | 169691 | Keeper, Center Span | 275 | 19131614 | Washer 13/32 x 1 x 14 Ga. |
| 61 | 17120614 | Screw, 3/8-16 x .875 | | | |
| 62 | 8883R | Cover, Pedal | | | |
| 63 | 180219 | Pulley, Engine | | | |

NOTE: All component dimensions given in U.S. inches
1 inch = 25.4 mm

REPAIR PARTS

TRACTOR- -MODEL NO. 917. 277390

STEERING ASSEMBLY



steering_pl.it_58

REPAIR PARTS

TRACTOR- -MODEL NO. 917. 277390

STEERING ASSEMBLY

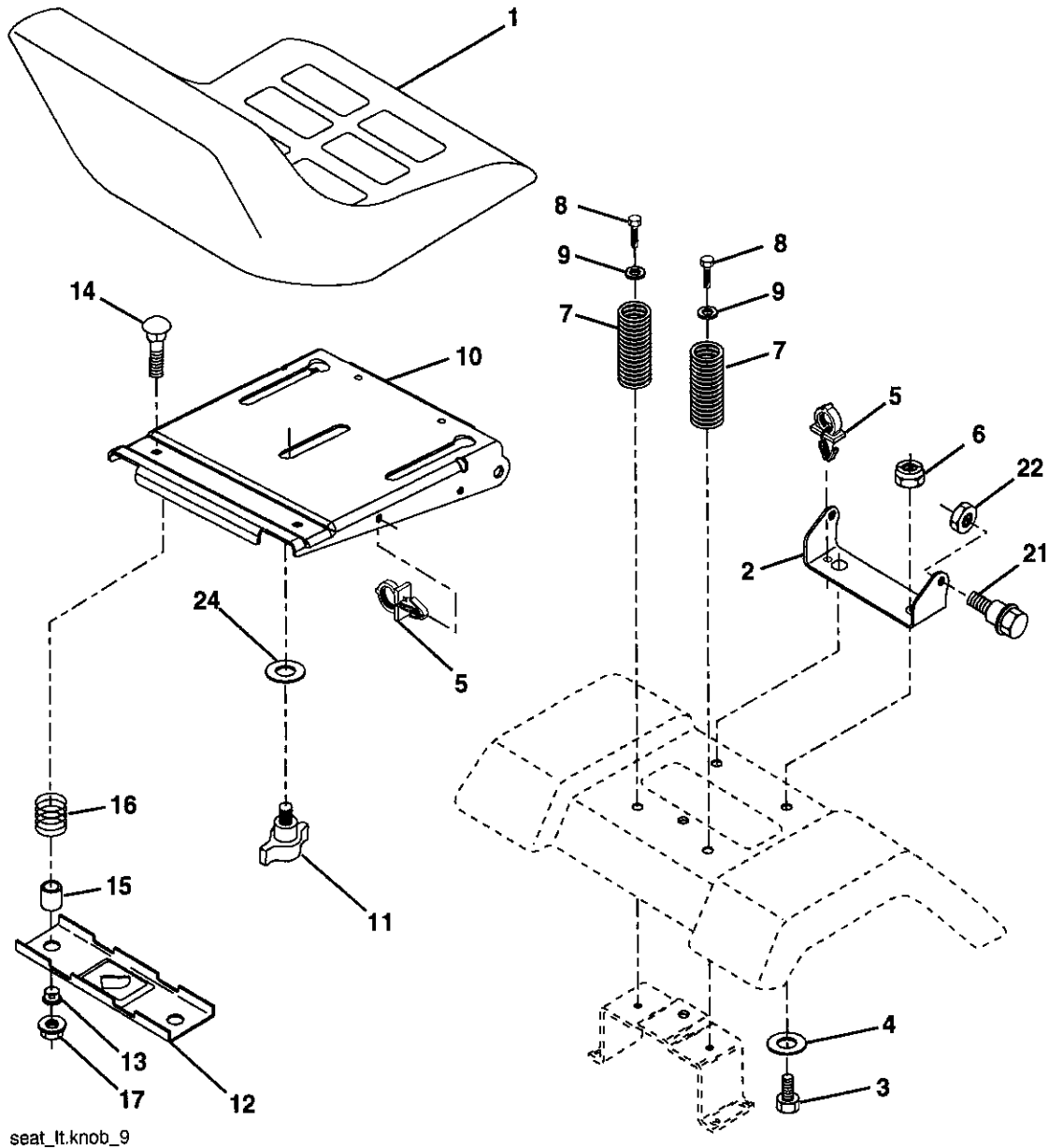
| KEY NO. | PART NO. | DESCRIPTION |
|---------|------------|-------------------------------------|
| 1 | 186780 | Steering Wheel |
| 2 | 175131 | Axle Assembly |
| 3 | 169840 | Spindle Assembly, L.H. |
| 4 | 169839 | Spindle Assembly, R.H. |
| 5 | 6266H | Bearing, Race, Thrust, Hardened |
| 6 | 121748X | Washer 25/32 x 1-5/8 x 16 Ga. |
| 7 | 19272016 | Washer 27/32 x 1-1/4 x 16 Ga. |
| 8 | 12000029 | Ring, Klip |
| 9 | 3366R | Bearing Col. Strg. |
| 10 | 175121 | Draglink |
| 11 | STD551137 | Washer, Lock |
| 13 | 136518 | Spacer Brg Axle Front |
| 15 | 145212 | Nut, Hexflange Lock |
| 17 | 190753 | Shaft, Steering |
| 26 | 126847X | Bushing, Link, Drag |
| 28 | 19131416 | Washer 13/32 x 7/8 x 16 Ga. |
| 29 | 17000612 | Screw 3/8-16 x 3/4 |
| 30 | STD561210 | Pin |
| 32 | 192757 | Rod, Tie |
| 34 | 10040500 | Washer Lock Hvy Hlcl Spr. 5/16 |
| 36 | 155099 | Bushing, Steering |
| 37 | 152927 | Screw |
| 38 | 186781 | Insert, Steering Wheel |
| 39 | 19113812 | Washer 11/32 x 2-3/8 |
| 40 | 73540600 | Nut Crownlock 3/8-24 |
| 41 | 186737 | Adaptor, Steering Wheel |
| 42 | 145054x428 | Boot, Steering Shaft |
| 43 | 121749X | Washer 25/32 x 1-1/4 x 16 Ga. |
| 44 | 190752 | Extension Shaft Steering |
| 46 | 121232X | Cap, Spindle |
| 47 | 183226 | Fitting Grease |
| 65 | 160367 | Spacer Brace Axle |
| 67 | 72110618 | Bolt Rdhd Sqnk 3/8-16 x 2-1/4 |
| 68 | 169827 | Axle, Brace |
| 71 | 175146 | Steering Asm |
| 82 | 169835 | Bracket Susp Chassis Front |
| 88 | 175118 | Bolt Shoulder 7/16-20 |
| 91 | 175553 | Clip Steering |
| 95 | 188967 | Washer Hardened .793 x 1.637 x .060 |
| 97 | 74780564 | Bolt 5/16-18 unc x 4 Gr. 5 |

NOTE: All component dimensions given in U.S. inches
1 inch = 25.4 mm

REPAIR PARTS

TRACTOR- -MODEL NO. 917. 277390

SEAT ASSEMBLY



seat_lt.knob_9

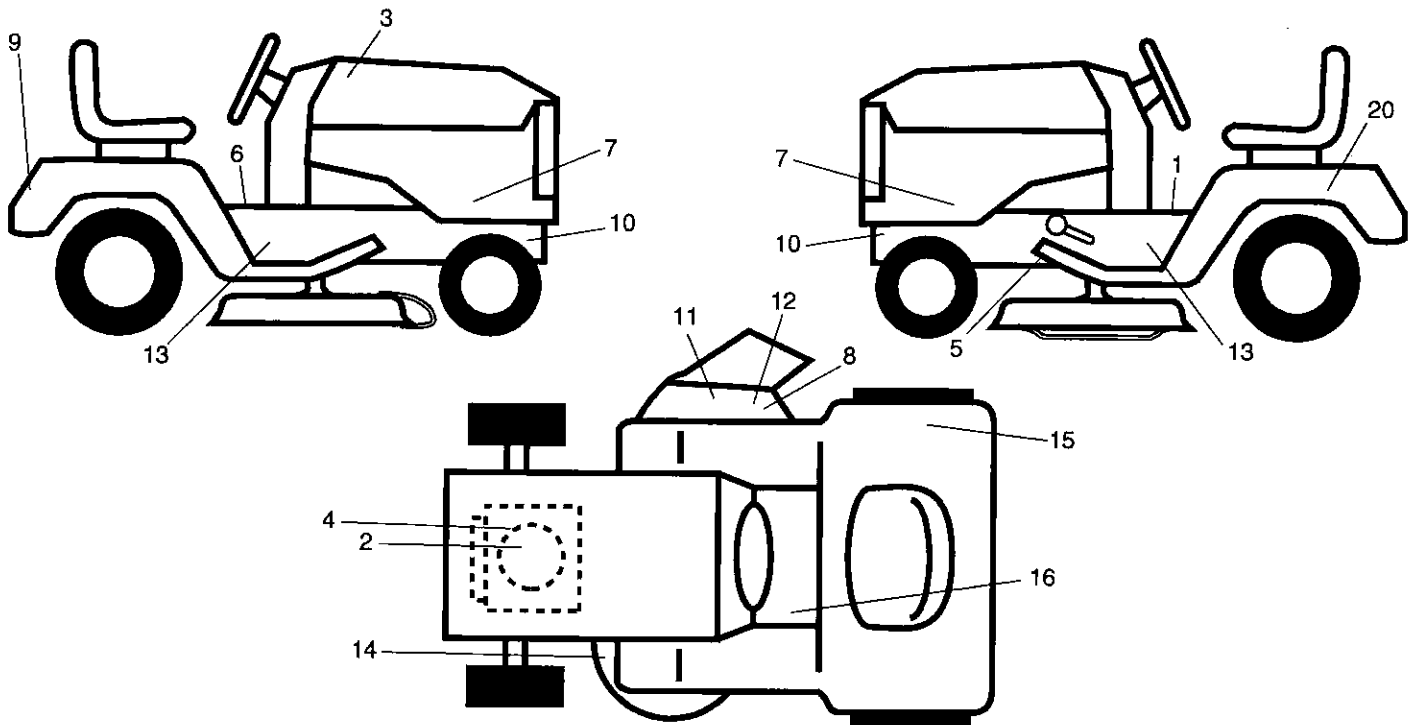
| KEY NO. | PART NO. | DESCRIPTION | KEY NO. | PART NO. | DESCRIPTION |
|---------|-----------|---------------------------|---------|-----------|--------------------------------|
| 1 | 188716 | Seat | 13 | 121248X | Bushing, Snap |
| 2 | 180166 | Bracket, Pivot, Seat | 14 | 72050412 | Bolt, Carriage 1/4-20 x 1-1/2 |
| 3 | 71110616 | Bolt | 15 | 134300 | Spacer, Split .28 x .88 |
| 4 | 19131610 | Washer 13/32 x 1 x 10 Ga. | 16 | 121250X | Spring |
| 5 | 145006 | Clip, Push-In Hinged | 17 | 123976X | Locknut, Flange 1/4 Gr. 5 |
| 6 | STD541437 | Nut | 21 | 171852 | Bolt, Shoulder 5/16-18 unc |
| 7 | 124181X | Spring, Seat | 22 | STD541431 | Nut |
| 8 | 17000616 | Screw 3/8-16 x 1-1/2 | 24 | 19171912 | Washer 17/32 x 1-3/16 x 12 Ga. |
| 9 | 19131614 | Washer 13/32 x 1 x 14 Ga. | | | |
| 10 | 180186 | Pan, Seat | | | |
| 11 | 166369 | Knob Seat | | | |
| 12 | 121246X | Bracket, Switch Mounting | | | |

NOTE: All component dimensions given in U.S. inches
1 inch = 25.4 mm

REPAIR PARTS

TRACTOR- -MODEL NO. 917. 277390

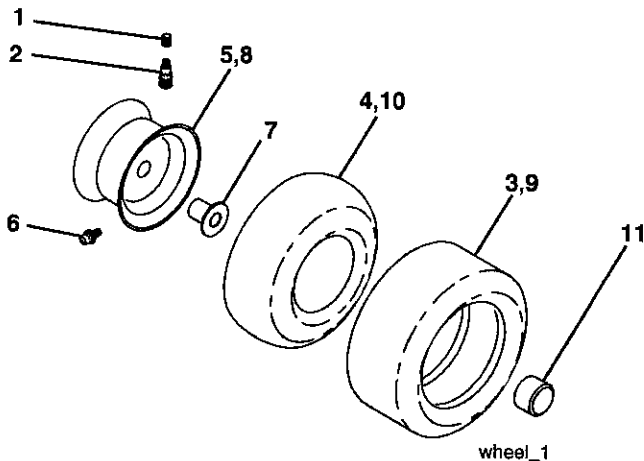
DECALS



| KEY NO. | PART NO. | DESCRIPTION |
|---------|----------|-------------------------------|
| 1 | 145498 | Decal, Read Owner's Manual |
| 2 | 189244 | Decal, HP Engine |
| 3 | 196132 | Decal, Hood |
| 4 | 196841 | Decal, Eng. Warning Sym. |
| 5 | 197490 | Decal, V-Belt Schematic |
| 6 | 140837 | Decal, Brake Parking |
| 7 | 193545 | Decal, Hood Side |
| 8 | 196357 | Decal, Deflector Warning Sym. |
| 9 | 163204 | Decal, Fender Craftsman |
| 10 | 159357 | Decal, Hot Muffler |
| 11 | 179128 | Decal, Deck "B" 42" |

| KEY NO. | PART NO. | DESCRIPTION |
|---------|------------|-----------------------------|
| 12 | 182166 | Decal, Cuttingfer |
| 13 | 189276 | Decal, Chassis |
| 14 | 160396 | Decal, V-Belt Schematic |
| 15 | 180432 | Decal, DB/CE |
| 16 | 159737 | Decal, Brake Clutch Sym. |
| 20 | 145005 | Decal, Battery Dngr/Psn Eng |
| -- | 138311 | Decal, Lift Handle |
| -- | 162598 | Decal, Drawbar Load Limit |
| -- | 179768X428 | Pad, Footrest LH |
| -- | 179769X428 | Pad, Footrest RH |
| -- | 197359 | Manual, Operator's (Euro) |
| -- | 197360 | Manual, Operator's (Scan) |
| -- | 197361 | Manual, Parts |

WHEELS & TIRES



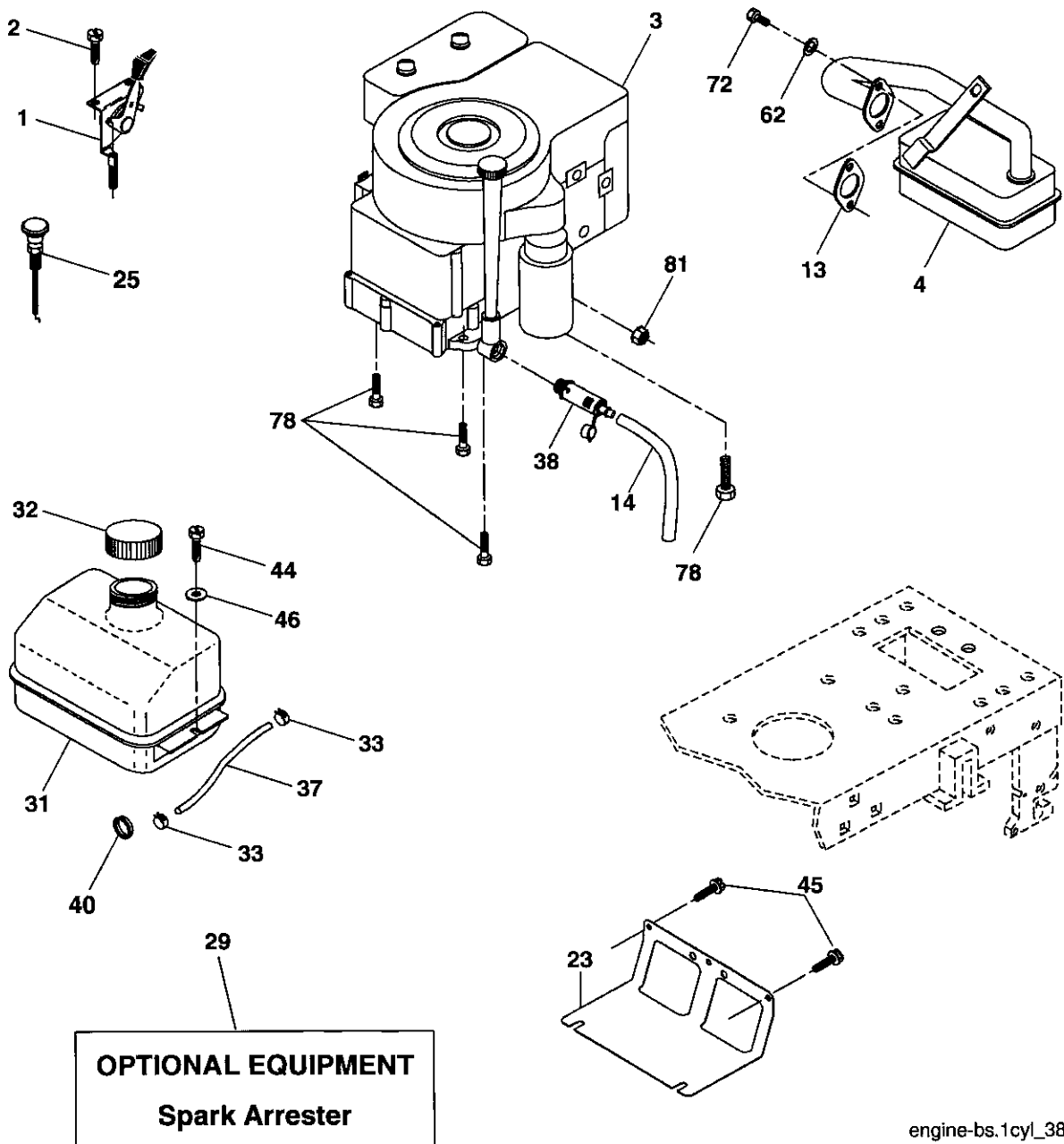
| KEY NO. | PART NO. | DESCRIPTION |
|---------|------------|-------------------------------------------------------|
| 1 | 59192 | Valve Cap, Tire |
| 2 | 65139 | Stem, Valve |
| 3 | 106222X | Tire, Front |
| 4 | 59904 | Tube, Front Tire (Not Provided, Service Item Only) |
| 5 | 106732X624 | Rim, Front |
| 6 | 278H | Fitting, Grease (Front Wheel Only) |
| 7 | 9040H | Bearing, Flange (Front Wheel Only) |
| 8 | 106108X624 | Rim, Rear |
| 9 | 124635X | Tire, Rear |
| 10 | 7152J | Tube, Rear Tire (Not Provided, Service Item Only) |
| 11 | 104757X428 | Cap, Axle |
| -- | 144334 | Sealant, Tire 10 oz. |

NOTE: All component dimensions given in U.S. inches
1 inch = 25.4 mm

REPAIR PARTS

TRACTOR- -MODEL NO. 917. 277390

ENGINE



engine-bs.1cyl_38

| KEY NO. | PART NO. | DESCRIPTION |
|---------|------------|---------------------------------------------------------|
| 1 | 170545 | Control, Throttle/Choke |
| 2 | 17720408 | Screw, Hex Head, Thread Cutting 1/4-20 x 1/2 |
| 3 | ----- | Engine, Briggs Model No. 283H07-0400-E1 (See Breakdown) |
| 4 | 137352 | Muffler |
| 13 | 165291 | Gasket |
| 14 | 148456 | Tube Drain Oil Easy |
| 23 | 169837 | Shield Brn/Dbr Guard |
| 25 | 187770X428 | Control Choke |
| 29 | 137180 | Arrestor, Spark |
| 31 | 187750 | Tank, Fuel |
| 32 | 140527 | Cap Assembly, Fuel Sears, Vented |

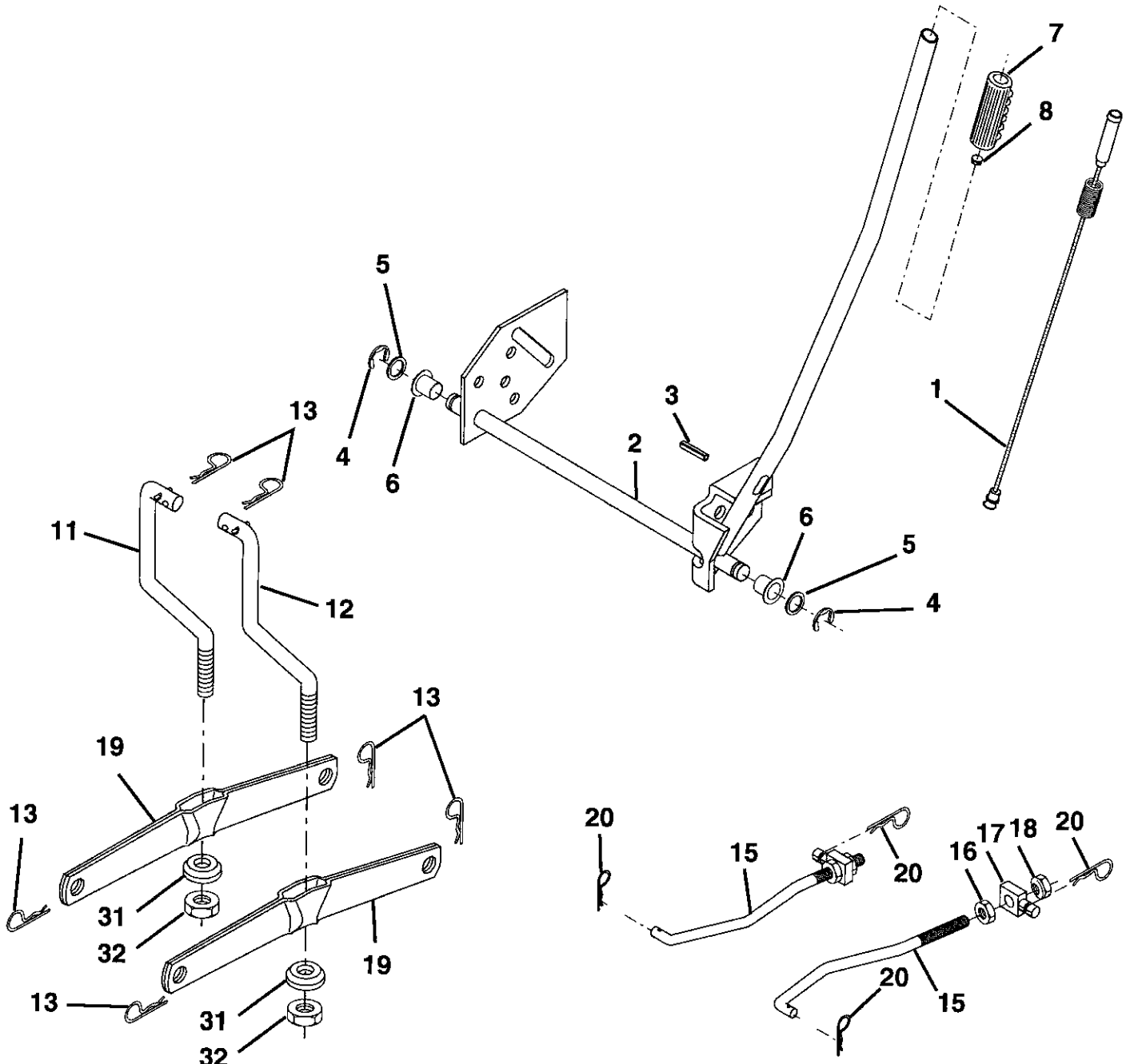
| KEY NO. | PART NO. | DESCRIPTION |
|---------|----------|--------------------------------------------------|
| 33 | 123487X | Clamp, Hose |
| 37 | 137040 | Line, Fuel |
| 38 | 181654 | Plug, Drain Oil Easy |
| 40 | 124028X | Bushing Snap |
| 44 | 17670412 | Screw, Hex Washer Head, Thd., Roll. 1/4-20 x 3/4 |
| 45 | 17000612 | Screw Hex Wsh Thdr 3/8-16 x 3/4 |
| 46 | 19091416 | Washer 9/32 x 7/8 x 16 Ga. |
| 62 | 10010500 | Washer Split |
| 72 | 71070512 | Screw Hex Head Cap 5/16-18 x 3/4 |
| 78 | 17060620 | Screw 3/8-16 x 1-1/4 |
| 81 | 73510400 | Nut Keps Hex 1/4-20 unc |

NOTE: All component dimensions given in U.S. inches 1 inch = 25.4 mm

REPAIR PARTS

TRACTOR- -MODEL NO. 917. 277390

MOWER LIFT



lift-rh.1piece_3

| KEY NO. | PART NO. | DESCRIPTION |
|---------|-----------|--------------------------------|
| 1 | 159460 | Lift Lever Inner Wire Assembly |
| 2 | 159471 | Shaft Assembly, Lift |
| 3 | 105767X | Pin, Groove |
| 4 | 12000002 | E-Ring |
| 5 | 19211621 | Washer 21/32 x 1 x 21 Ga. |
| 6 | 120183X | Bearing, Nylon |
| 7 | 125631X | Grip, Handle, Fluted |
| 8 | 122365X | Button, Plunger, Red |
| 11 | 139865 | Link, Lift, L.H. |
| 12 | 139866 | Link, Lift, R.H. |
| 13 | STD624008 | Retainer Spring |

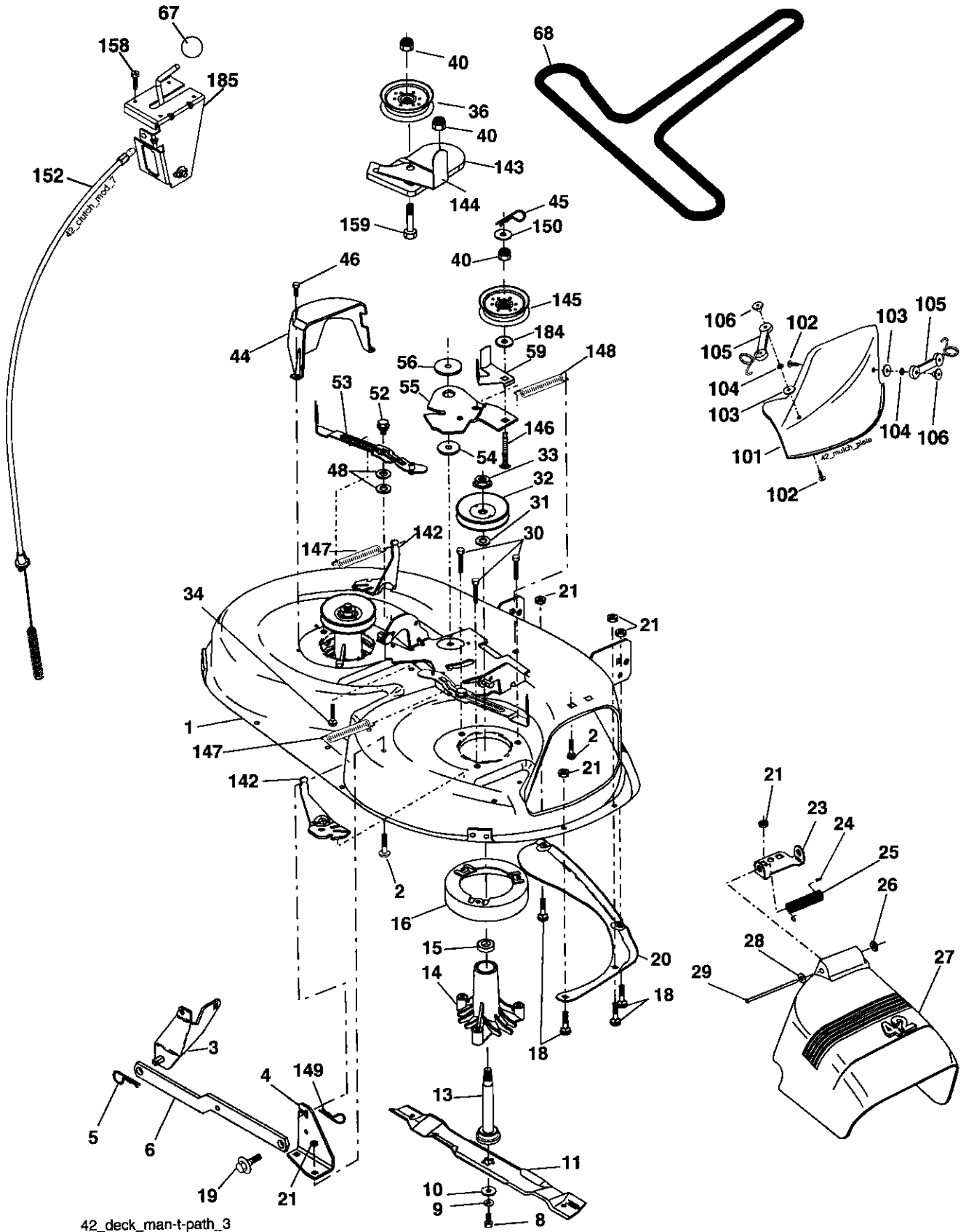
| KEY NO. | PART NO. | DESCRIPTION |
|---------|----------|---------------------------------------------|
| 15 | 173288 | Link, Front |
| 16 | 73350800 | Nut, Hex, Jam 1/2-13 unc |
| 17 | 175689 | Trunnion |
| 18 | 73800800 | Locknut, Hex, with Washer Insert 1/2-13 unc |
| 19 | 139868 | Arm, Suspension, Rear |
| 20 | 163552 | Retainer Spring |
| 31 | 169865 | Bearing, Pvt, Lift |
| 32 | 73540600 | Nut, Crownlock 3/8-24 |

NOTE: All component dimensions given in U.S. inches
1 inch = 25.4 mm

REPAIR PARTS

TRACTOR- -MODEL NO. 917. 277390

MOWER



REPAIR PARTS

TRACTOR- -MODEL NO. 917. 277390

MOWER

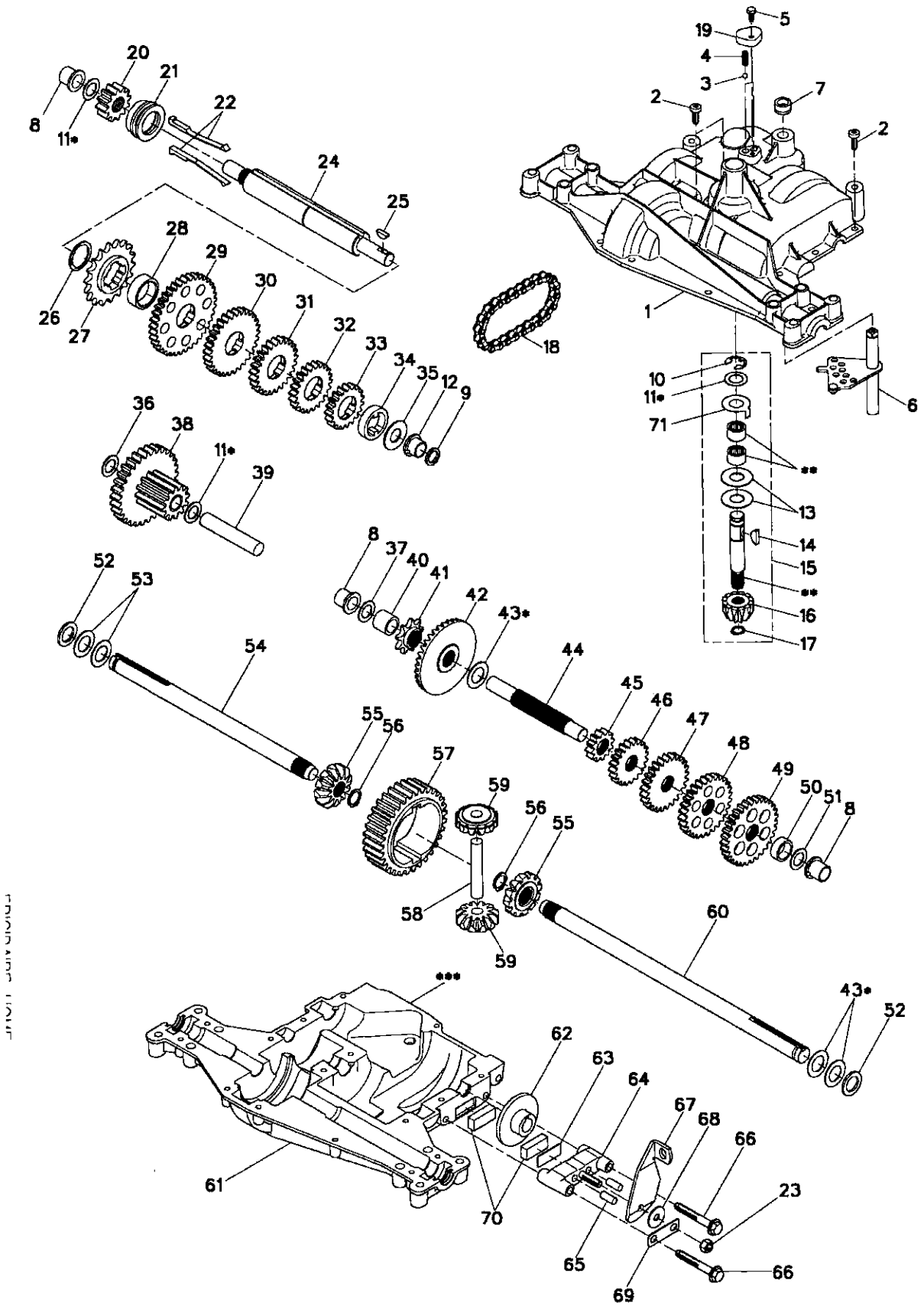
| KEY NO. | PART NO. | DESCRIPTION | KEY NO. | PART NO. | DESCRIPTION |
|---------|------------|-------------------------------------|---------|----------|----------------------------------------------------------------------------------------|
| 1 | 165892 | Mower Deck Assembly, 42" | 52 | 139888 | Bolt, Shoulder 5/16-18 unc |
| 2 | STD533107 | Bolt | 53 | 184907 | Arm Assembly, Pad, Brake |
| 3 | 138017 | Bracket Assembly, Sway Bar, Front | 54 | 178515 | Washer, Hardened |
| 4 | 165460 | Bracket Sway Bar 38/42" eck | 55 | 155046 | Arm, Idler |
| 5 | STD624008 | Retainer Spring | 56 | 165723 | Spacer, Retainer |
| 6 | 178024 | Bar Sway Deck | 59 | 141043 | Guard, TUV Idler |
| 8 | 850857 | Bolt, Hex 3/8-24 x 1.25 Gr. 8 | 67 | 149846 | Knob Custom Oval |
| 9 | STD551137 | Washer, Lock | 68 | 180215 | V-Belt |
| 10 | 140296 | Washer, Hardened | 101 | 136420 | Cover Mulching |
| 11 | 134149 | Blade, Mulching Std. | 102 | 71081010 | Screw Pan Hd Phillips 10-24 x 5/8 |
| 13 | 137645 | Shaft Assembly, Mandrel, Vented | 103 | 19061216 | Washer #10 |
| 14 | 128774 | Housing, Mandrel, Vented | 104 | 10071000 | Washer Lock #10 |
| 15 | 110485X | Bearing, Ball, Mandrel | 105 | 160793 | Latch Asm. |
| 16 | 174493 | Stripper, Mower Deck | 106 | 2029J | Nut Weld |
| 18 | 72140505 | Bolt, Carriage 5/16-18 x 5/8 | 142 | 165890 | Arm Spring Brake Mower |
| 19 | 132827 | Bolt, Shoulder | 143 | 157109 | Bracket Arm Idler 42" |
| 20 | 159770 | Baffle, Vortex | 144 | 158634 | Keeper Belt 42" Clutch Cable |
| 21 | STD541431 | Nut Crownlock 5/16-18 unc | 145 | 165888 | Pulley Idler Flat |
| 23 | 177563 | Bracket, Deflector | 146 | 171977 | Bolt Carriage Idler |
| 24 | 105304X | Cap, Sleeve | 147 | 179748 | Spring Extension |
| 25 | 123713X | Spring, Torsion, Deflector | 148 | 169022 | Spring Return Idler |
| 26 | 110452X | Nut, Push | 149 | 165898 | Retainer Spring Yellow Zinc |
| 27 | 130968X428 | Shield, Deflector | 150 | 19091210 | Washer 9/32 x 3/4 x 10 Ga. |
| 28 | 19111016 | Washer 11/32 x 5/8 x 16 Ga. | 152 | 181555 | Cable Clutch 42 In |
| 29 | 131491 | Rod, Hinge | 158 | 17720408 | Screw Hex Thd Cut 1/4-20 x 1/2 |
| 30 | 173984 | Screw Thdrol DOD PT Hex | 159 | 72140614 | Bolt Rdhd Sqn 3/8-16 unc x 1-3/4 |
| 31 | 187690 | Washer, Spacer | 184 | 19131410 | Washer 13/32 x 7/8 x 10 Ga. |
| 32 | 153535 | Pulley, Mandrel | 185 | 188234 | Head Assy. Cable Clutch |
| 33 | 178342 | Nut, Toplock, Flanged | -- | 130794 | Mandrel Assembly (Includes housing, shaft and shaft hardware only-pulley not included) |
| 34 | 72110612 | Bolt Carr. Sh. 3/8-16 x 1-1/2 Gr. 5 | -- | 181268 | Replacement Mower, Complete |
| 36 | 131494 | Pulley, Idler, Flat | | | |
| 40 | 73900600 | Nut Lock Flg. 3/8-16 unc | | | |
| 44 | 140088 | Guard, Mandrel, L.H. | | | |
| 45 | STD624003 | Retainer | | | |
| 46 | 137729 | Screw, Thd. Roll 1/4-20 x 5/8 | | | |
| 48 | 133944 | Washer, Hardened | | | |

NOTE: All component dimensions given in U.S. inches
1 inch = 25.4 mm

REPAIR PARTS

TRACTOR- -MODEL NO. 917. 277390

DANA TRANSAXLE - MODEL NUMBER D4360-139



FRIGIDAIR LUBRICATION

REPAIR PARTS

TRACTOR- -MODEL NO. 917. 277390

DANA TRANSAXLE - MODEL NUMBER D4360-139

| KEY NO. | PART NO. | DESCRIPTION | KEY NO. | PART NO. | DESCRIPTION |
|---------|----------|-----------------------------------|---------|----------|-----------------------------------|
| 1 | 170981 | Housing, Upper | 41 | 105928X | Sprocket, 9T |
| 2 | 2274J | Screw, Tapping, 1/4-20 X .734 | 42 | 170988 | Gear, Bevel, 36T |
| 3 | 134400 | Ball, Detent | 43 | 134394 | *Assy, Kit, Shim, .750 Shaft |
| 4 | 105904X | Spring, Detent | 44 | 120473X | Shaft, Drive |
| 5 | 160940 | Screw, Tapping, No. 10-24 X .482 | 45 | 142678 | Gear, Spur, 12T |
| 6 | 138235 | Assy, Kit, Shifter | 46 | 124641 X | Gear, Spur, 20T |
| 7 | 108727X | V-Ring | 47 | 106589X | Gear, Spur, 25T |
| 8 | 148266 | Bearing, Flange | 48 | 120408X | Gear, Spur, 28T |
| 9 | 148269 | Seal, Oil | 49 | 105937X | Gear, Spur, 31T |
| 10 | 2225J | Ring, Retaining | 50 | 105936X | Spacer, .781 X 1.00 X .375 |
| 11 | 134793 | * Assy, Kit, Shim, .625 Shaft | 51 | 2226J | Washer, Plain, .632 X 1.00 X .060 |
| 12 | 148268 | Bearing, Flange | 52 | 134401 | Washer, Neoprene |
| 13 | 120415X | Washer, Plain, .632 X 1.38 X .046 | 53 | 2264J | Washer, Plain, .758 X 1.25 X .031 |
| 14 | 142674 | Key, Woodruff, No. 9 | 54 | 160946 | Axle, LH |
| 15 | 170983 | Assy, Kit, Input Shaft | 55 | 170990 | Gear, Miter, T, Splined |
| 16 | 170986 | Pinion, Bevel, 12T | 56 | 160948 | Ring, Retaining |
| 17 | 105909X | Ring, Retaining | 57 | 110071X | Gear, Spur, 32T |
| 18 | 105910X | Chain, 24 Pitches | 58 | 120952X | Shaft, Cross |
| 19 | 160942 | Cover, Detent | 59 | 170991 | Gear, Miter, 1 2T, Idler |
| 20 | 160943 | Gear, Spur, 1 2T | 60 | 160950 | Axle, RH |
| 21 | 148267 | Collar, Clutch | 61 | 170992 | Housing, Lower |
| 22 | 138236 | Assy, Kit, Clutch Keys | 62 | 7294J | Disc, Brake |
| 23 | 73810500 | Nut, Lock, 5/16-24 | 63 | 108989X | Spacer, Brake Puck |
| 24 | 142676 | Shaft, Intermediate | 64 | 160952 | Jaw, Brake |
| 25 | 2244J | Key, Woodruff, No. 61 | 65 | 120954X | Pin, Dowel |
| 26 | 105916X | Ring, Retaining | 66 | 160953 | Screw, Tapping, 5/16-18 X 2.35 |
| 27 | 120470X | Sprocket, 1 8T | 67 | 138244 | Lever, Actuating |
| 28 | 110070X | Spacer, 1. 131 X 1.45 X .494 | 68 | 108996X | Washer, Plain, .321 X 1.00 X .055 |
| 29 | 142677 | Gear, Spur, 37T | 69 | 160954 | Bracket, Anti-Rotation |
| 30 | 124644X | Gear, Spur, 30T | 70 | 120951X | Puck, Friction |
| 31 | 108980X | Gear, Spur, 25T | 71 | 174256 | Washer, Anti Rotation |
| 32 | 120406X | Gear, Spur, 22T | 72 | 120416X | Grease |
| 33 | 134796 | Gear, Spur, 1 9T | | | |
| 34 | 134797 | Spacer, 1. 133 X 1.50 X .375 | | | |
| 35 | 105925X | Washer, Plain, .640 X 1.37 X .061 | | | |
| 36 | 2228J | Washer, Plain, .632 X 1.00 X .046 | | | |
| 37 | 170987 | Washer, Plain, .632 X 1.00 X .031 | | | |
| 38 | 174255 | Assy, Gear, Comb., 12T & 30T | | | |
| 39 | 124639X | Shaft, Idler | | | |
| 40 | 120472X | Spacer, .633 X .87 X .755 | | | |

NOTE: All component dimensions given in U.S. inches
1 inch = 25.4 mm

* Use in various combinations to maintain proper clearances.

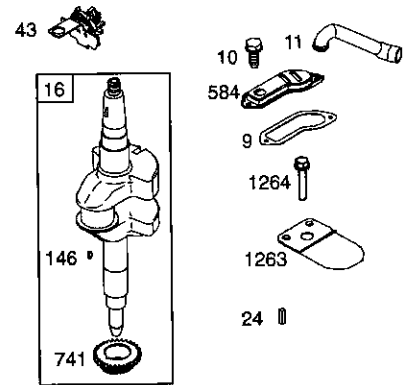
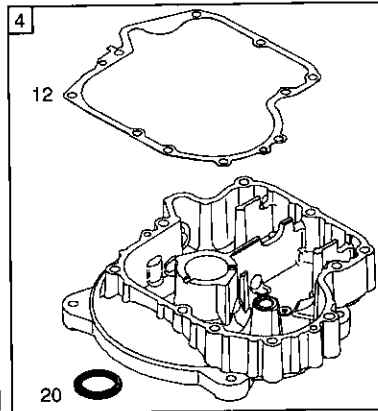
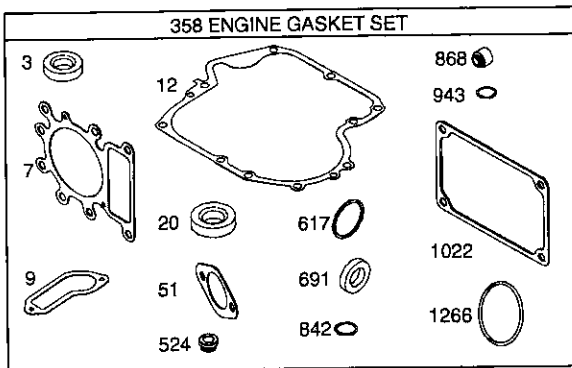
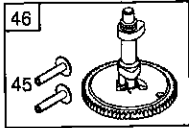
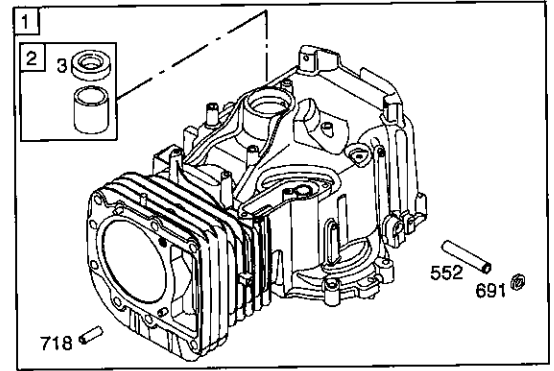
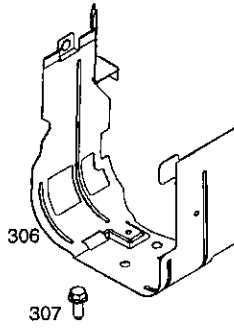
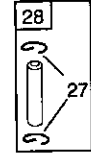
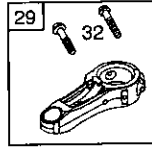
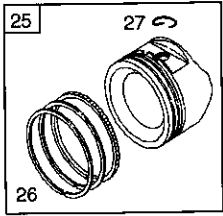
** Order Key No. 15.

*** Silicone Sealant to be applied between Upper and Lower Housings (use Loctite Ultra Gray Silicone 5699 or equivalent).

REPAIR PARTS

TRACTOR- -MODEL NO. 917. 277390

BRIGGS & STRATTON ENGINE - - MODEL NUMBER 283H07, TYPE NUMBER 0400-E1



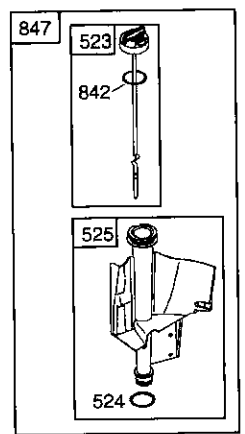
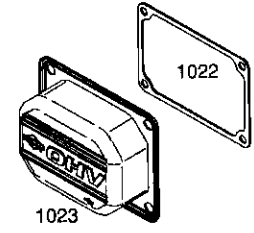
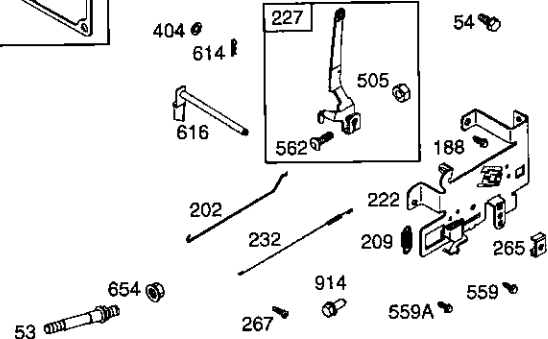
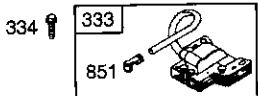
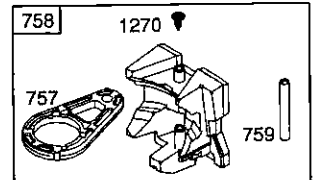
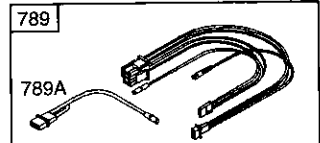
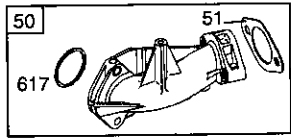
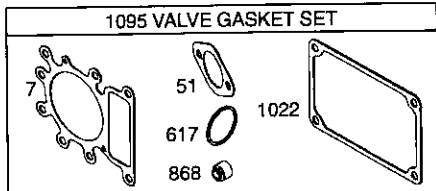
1019 LABEL KIT

1058 OWNER'S MANUAL

1036 EMISSION LABEL

1329 REPLACEMENT ENGINE

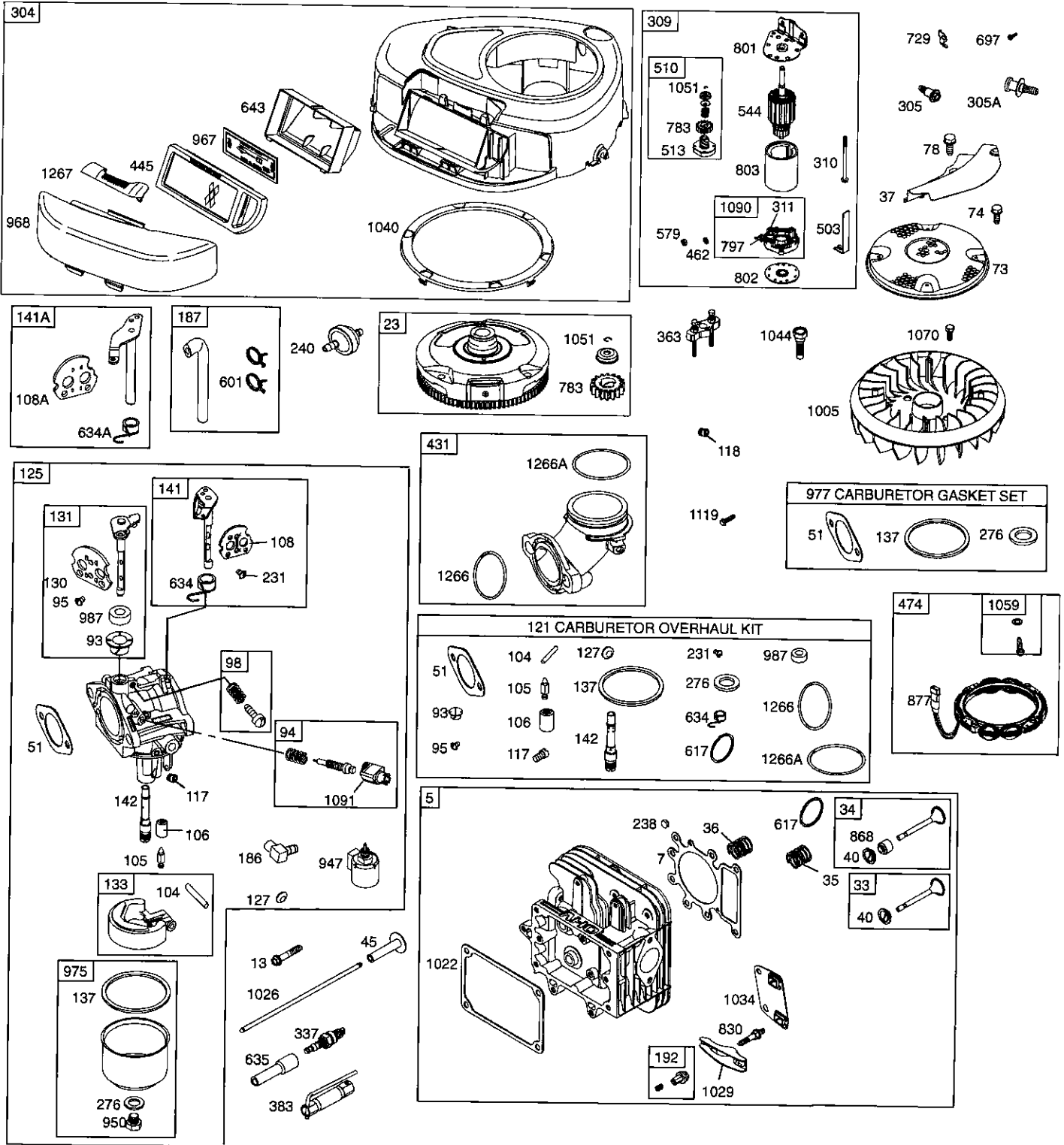
1330 OPERATOR MANUAL



REPAIR PARTS

TRACTOR- -MODEL NO. 917. 277390

BRIGGS & STRATTON ENGINE - - MODEL NUMBER 283H07, TYPE NUMBER 0400-E1



REPAIR PARTS

TRACTOR- -MODEL NO. 917. 277390

BRIGGS & STRATTON ENGINE - - MODEL NUMBER 283H07, TYPE NUMBER 0400-E1

| KEY NO. | PART NO. | DESCRIPTION | KEY NO. | PART NO. | DESCRIPTION |
|---------|----------|----------------------------------|---------|----------|---------------------------------------------------------------------|
| 1 | 697132 | Cylinder Assembly | 105 | 231855 | ∅ Valve-Float Needle |
| 2 | 399265 | Kit-Bushing/Seal (Magneto Side) | 106 | 690577 | ∅ Seat-Inlet |
| 3 | 391086 | • Seal-Oil (Magneto Side) | 108 | 690464 | Valve-Choke (Manual Choke) |
| 4 | 697106 | Sump-Engine | 108A | 692344 | Valve-Choke (Choke A Matic) |
| 5 | 698147 | Head-Cylinder | 117 | 694352 | ∅ Jet-Main (Standard) |
| 7 | 273280 | *+ Gasket-Cylinder Head | 118 | 697492 | Jet-Main (High Altitude) |
| 9 | 697109 | • Gasket-Breather | 121 | 697241 | Kit-Carburetor Overhaul |
| 10 | 697157 | Screw (Breather Assembly) | 125 | 698445 | Carburetor |
| 11 | 697113 | Tube-Breather | 127 | 695005 | Plug-Welch |
| 12 | 697110 | • Gasket-Crankcase | 130 | 691750 | Valve-Throttle |
| 13 | 690360 | Screw (Cylinder Head) | 131 | 494379 | Kit-Throttle Shaft |
| 15 | 690946 | Plug-Oil Drain | 133 | 494381 | Float-Carburetor |
| 16 | 697127 | Crankshaft | 137 | 281165 | ∅‡ Gasket-Float Bowl |
| 20 | 690947 | • Seal-Oil (PTO Side) | 141 | 495097 | Kit-Choke Shaft (Manual Choke) |
| 22 | 692125 | Screw (Crankcase Cover/Sump) | 141A | 495931 | Kit-Choke Shaft (Choke A Matic) |
| 23 | 693557 | Flywheel | 142 | 697140 | ∅ Nozzle-Carburetor |
| 24 | 222698 | Key-Flywheel | 146 | 691639 | Key-Timing |
| 25 | 698371 | Piston Assembly (Standard) | 186 | 698174 | Connector-Hose |
| -- | 698394 | Piston Assembly (.020" Oversize) | 187 | 699331 | Line-Fuel (Molded) (Cut to Required Length) |
| 26 | 698375 | Ring Set (Standard) | 188 | 691693 | Screw (Control Bracket) |
| -- | 698397 | Ring Set (.020" Oversize) | 192 | 691986 | Adjuster-Rocker Arm |
| 27 | 698469 | Lock-Piston Pin | 202 | 691841 | Link-Mechanical Governor |
| 28 | 697099 | Pin-Piston | 209 | 692208 | Spring-Governor |
| 29 | 697126 | Rod-Connecting (Standard) | 222 | 694042 | Bracket-Control |
| 32 | 692852 | Screw (Connecting Rod) | 227 | 691374 | Lever-Governor Control |
| 33 | 695760 | Valve-Exhaust | 231 | 691636 | Screw (Choke Valve) |
| 34 | 695761 | Valve-Intake | 232 | 691842 | Spring-Governor |
| 35 | 691279 | Spring-Valve (Intake) | 238 | 691843 | Cap-Valve |
| 36 | 691279 | Spring-Valve (Exhaust) | 240 | 394358 | Filter-Fuel |
| 37 | 697352 | Guard-Flywheel | 265 | 691024 | Clamp-Casing |
| 42 | 499586 | Keeper-Valve | 267 | 695134 | Screw (Casing Clamp) |
| 43 | 691968 | Slinger-Governor/Oil | 276 | 692255 | ∅‡ Washer-Sealing |
| 45 | 690564 | Tappet-Valve | 304 | 698402 | Housing-Blower |
| 46 | 790400 | Camshaft | 305 | 697102 | Screw (Blower Housing) |
| 48 | 697761 | Short Block | 305A | 697103 | Screw (Blower Housing) |
| 50 | 690193 | Manifold-Intake | 306 | 697107 | Shield-Cylinder |
| 51 | 692137 | *∅‡+ Gasket-Intake | 307 | 691003 | Screw (Cylinder Shield) |
| 53 | 690227 | Stud (Carburetor) | 309 | 693551 | Motor-Starter |
| 54 | 691148 | Screw (Intake Manifold) | 309A | ----- | Motor-Starter (For Replacement Starter Motor, See Reference 309) |
| 73 | 697133 | Screen-Rotating | 310 | 690323 | Bolt (Starter Motor) |
| 74 | 697987 | Screw (Rotating Screen) | 311 | 497608 | Brush Set |
| 78 | 691003 | Screw (Flywheel Guard) | 311A | 395538 | Brush Set |
| 93 | 690602 | ∅ Bushing-Throttle Shaft | | | |
| 94 | 498030 | Kit-Idle Mixture | | | |
| 95 | 691636 | Screw (Throttle Valve) | | | |
| 98 | 495800 | Kit-Idle Speed | | | |
| 104 | 690525 | ∅ Pin-Float Hinge | | | |

- Included in Engine Gasket Set, Key. No. 358
- ∅ Included in Carburetor Overhaul Kit, Key. No. 121
- ‡ Included in Carburetor Gasket Set, Key. No. 977
- + Included in Valve Gasket Set, Key. No. 1095

NOTE: All component dimensions given in U.S. inches 1 inch = 25.4 mm

REPAIR PARTS

TRACTOR- -MODEL NO. 917. 277390

BRIGGS & STRATTON ENGINE - - MODEL NUMBER 283H07, TYPE NUMBER 0400-E1

| KEY NO. | PART NO. | DESCRIPTION | KEY NO. | PART NO. | DESCRIPTION |
|---------|----------|----------------------------------------|---------|-------------|----------------------------------------------------------------------------------------------------------------|
| 333 | 492341 | Armature-Magneto | 830 | 691095 | Stud (Rocker Arm) |
| 334 | 691061 | Screw (Magneto Armature) | 842 | 691031 | • Seal-O Ring (Dipstick Tube) |
| 337 | 691043 | Plug-Spark | 847 | 697611 | Dipstick/Tube Assembly |
| 358 | 697151 | Gasket Set-Engine | 851 | 692424 | Terminal-Spark Plug |
| 363 | 19203 | Flywheel Puller | 868 | 690968 | *+ Seal-Valve |
| 383 | 89838 | Wrench-Spark Plug | 877 | 393456 | Wire-Connector/Alternator |
| 404 | 691691 | Washer (Governor Crank) | 914 | 690960 | Screw (Rocker Cover) |
| 431 | 697122 | Elbow-Intake | 947 | 694393 | Solenoid-Fuel |
| 445 | 698083 | Filter-Air Cleaner Cartridge | 950 | 691657 | Screw (Float Bowl) |
| 462 | 691261 | Washer (Starter Cable) | 967 | 697015 | Filter-Pre Cleaner |
| 474 | 696459 | Alternator | 968 | 698403 | Cover-Air Cleaner |
| 503 | 691532 | Strap-Starter | 975 | 495933 | Bowl-Float |
| 505 | 691251 | Nut (Governor Control Lever) | 977 | 690192 | Gasket Set-Carburetor |
| 510 | 693699 | Drive-Starter | 987 | 691326 | ∅ Seal-Throttle Shaft |
| 510A | 497606 | Drive-Starter | 1005 | 699043 | Fan-Flywheel |
| 513 | 692024 | Clutch-Drive | 1019 | 699196 | Kit-Label |
| 523 | 699908 | Dipstick | 1022 | 272475 | *+ Gasket-Rocker Cover |
| 524 | 691032 | • Seal-Dipstick Tube | 1023 | 692492 | Cover-Rocker Arm |
| 525 | 697184 | Tube-Dipstick | 1026 | 692003 | Rod-Push (Intake) |
| 544 | 692034 | Starter-Armature | --- | 692011 | Rod-Push (Exhaust) |
| 552 | 697144 | Bushing-Governor Crank | 1029 | 691751 | Arm-Rocker |
| 559 | 697561 | Screw (Remote Choke Stop) | 1034 | 690822 | Guide-Push Rod |
| 559A | 693675 | Screw (Remote Choke Stop) | 1036 | 790464 | Label-Emission |
| 562 | 691119 | Bolt (Governor Control Lever) | 1040 | 698368 | Plate-Trim |
| 579 | 691029 | Nut (Starter Cable) | 1044 | 698139 | Screw (Flywheel) |
| 584 | 697112 | Cover-Breather Passage | 1051 | 691265 | Ring-Retaining |
| 601 | 95162 | Clamp-Hose | 1058 | 275038 | Owner's Manual |
| 614 | 691620 | Pin-Cotter | 1059 | 698516 | Kit-Screw/Washer |
| 616 | 692012 | Crank-Governor | 1070 | 690372 | Screw (Flywheel Fan) |
| 617 | 692138 | ∅ • Seal-O Ring (Intake Manifold) | 1090 | 691293 | Retainer-Brush |
| 634 | 690801 | ∅ Spring/Seal Assembly (Manual Choke) | 1091 | 691333 | Cap-Limiter |
| 634A | 690802 | ∅ Spring/Seal Assembly (Choke A Matic) | 1095 | 690190 | Gasket Set-Valve |
| 635 | 691909 | Boot-Spark Plug | 1119 | 691183 | Screw (Alternator) |
| 643 | 698401 | Retainer-Air Filter | 1263 | 697124 | Reed-Breather |
| 654 | 690958 | Nut (Carburetor) | 1264 | 697104 | Screw (Breather Reed) |
| 691 | 692407 | • Seal-Governor Shaft | 1266 | 691917 | *∅ Seal-O Ring (Intake Elbow) |
| 697 | 690372 | Screw (Drive Cap) | 1266A | 697123 | ∅ Seal-O Ring (Intake Elbow) |
| 718 | 690959 | Pin-Locating | 1267 | 697419 | Latch-Blower Housing |
| 729 | 691224 | Clip-Wire | 1270 | 697156 | Plug-AVS Counterweight |
| 741 | 697128 | Gear-Timing | 1329 | 31C707-0230 | Replacement Engine (Transfer the speed limiter control assembly and governor spring to the replacement engine) |
| 757 | 697607 | Link-Counterweight | | | |
| 758 | 697134 | Counterweight | | | |
| 759 | 697392 | Pin-Counterweight | | | |
| 783 | 693713 | Gear-Pinion | 1330 | 275038 | Owner's Manual |
| 789 | 698329 | Harness-Wiring | | | |
| 789A | 790544 | Harness-Wiring | | | |
| 797 | 693167 | Nut (Brush Retainer) | • | | Included in Engine Gasket Set, Key. No. 358 |
| 801 | 691283 | Cap-Drive | ∅ | | Included in Carburetor Overhaul Kit, Key. No. 121 |
| 802 | 691286 | Cap-End | ‡ | | Included in Carburetor Gasket Set, Key. No. 977 |
| 803 | 693757 | Housing-Starter | + | | Included in Valve Gasket Set, Key. No. 1095 |

NOTE: All component dimensions given in U.S. inches 1 inch = 25.4 mm

LIMITED WARRANTY ON CRAFTSMAN RIDING EQUIPMENT

For two (2) years from the date of purchase, if this Craftsman Riding Equipment is maintained, lubricated and tuned up according to the instructions in the owner's manual, Sears will repair or replace free of charge any parts that are found to be defective in material or workmanship according to the guidelines of coverage listed below. Sears will also provide free labor for these applicable warranted parts for 2 full years. During the first 30 days of purchase, there will be no charges to service the product at your home for issues covered by this warranty. (See exclusions below). For your convenience, IN HOME warranty service will still be available after the first 30 days of purchase, but a trip charge will apply. This charge will be waived if the Craftsman product is dropped off at an authorized Sears location. For the nearest authorized Sears location, please call 1-800-4-MY-HOME®. This warranty applies only while this product is within the United States.

This Warranty does not cover:

- Expendable items which become worn during normal use, including but not limited to blades, spark plugs, air cleaners, belts, and oil filters.
- Standard Maintenance Servicing, oil changes, or tune-ups
- Tire replacement or repair caused by punctures from outside objects, such as nails, thorns, stumps, or glass.
- Repairs necessary because of operator abuse, including but not limited to, damage caused by towing objects beyond the capability of the riding equipment, impacting objects that bend the frame or crankshaft, or over-speeding the engine.
- Repairs necessary because of operator negligence, including but not limited to, electrical and mechanical damage caused by improper storage, failure to use the proper grade and amount of engine oil, failure to keep the deck clear of flammable debris, or failure to maintain the equipment according to the instructions contained in the owner's manual.
- Engine (fuel system) cleaning or repairs caused by fuel determined to be contaminated or oxidized (stale). In general, fuel should be used within 30 days of its purchase date.
- Normal deterioration and wear of the exterior finishes, or product label replacement.
- Riding equipment used for commercial or rental purposes.

LIMITED WARRANTY ON BATTERY

For ninety (90) days from date of purchase, if any battery included with this riding equipment proves defective in material or workmanship and our testing determines the battery will not hold a charge, Sears will replace the battery at no charge. During the first 30 days of purchase, there will be no charges to replace the battery at your HOME. After the first 30 days, for your convenience, IN-HOME warranty service will still be available but a trip charge will apply. This charge will be waived if the Craftsman product is dropped off at an authorized Sears location. For the nearest authorized Sears location, please call 1-800-4-MY-HOME®.

This battery warranty applies only while this product is within the United States.

This warranty gives you specific legal rights, and you may also have other rights, which vary, from state to state.

Sears, Roebuck and Co., Dept. 817WA, Hoffman Estates, IL 60179

CRAFTSMAN®