

REPAIR PARTS MANUAL
MODEL NO. 277640
Lawn Tractor

CRAFTSMAN®

HOW TO USE THIS MANUAL

This manual is designed to provide the customer with a means to identify the parts on his/her tractor when ordering repair parts. The illustrations may or may not represent the actual assemblies; therefore, it is not recommended to use this manual as a guide to assemble or disassemble the tractor. Some hardware and parts are drawn larger in order to more readily identify them.

Each tractor has its own model number.

The model number for your tractor can be found on the fender under the seat.

When ordering parts, always give the following information:

- Product - "Tractor"
- Model Number - "277640"
- Part Number
- Part Description

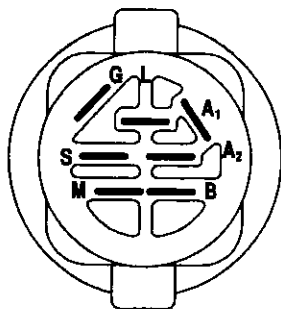
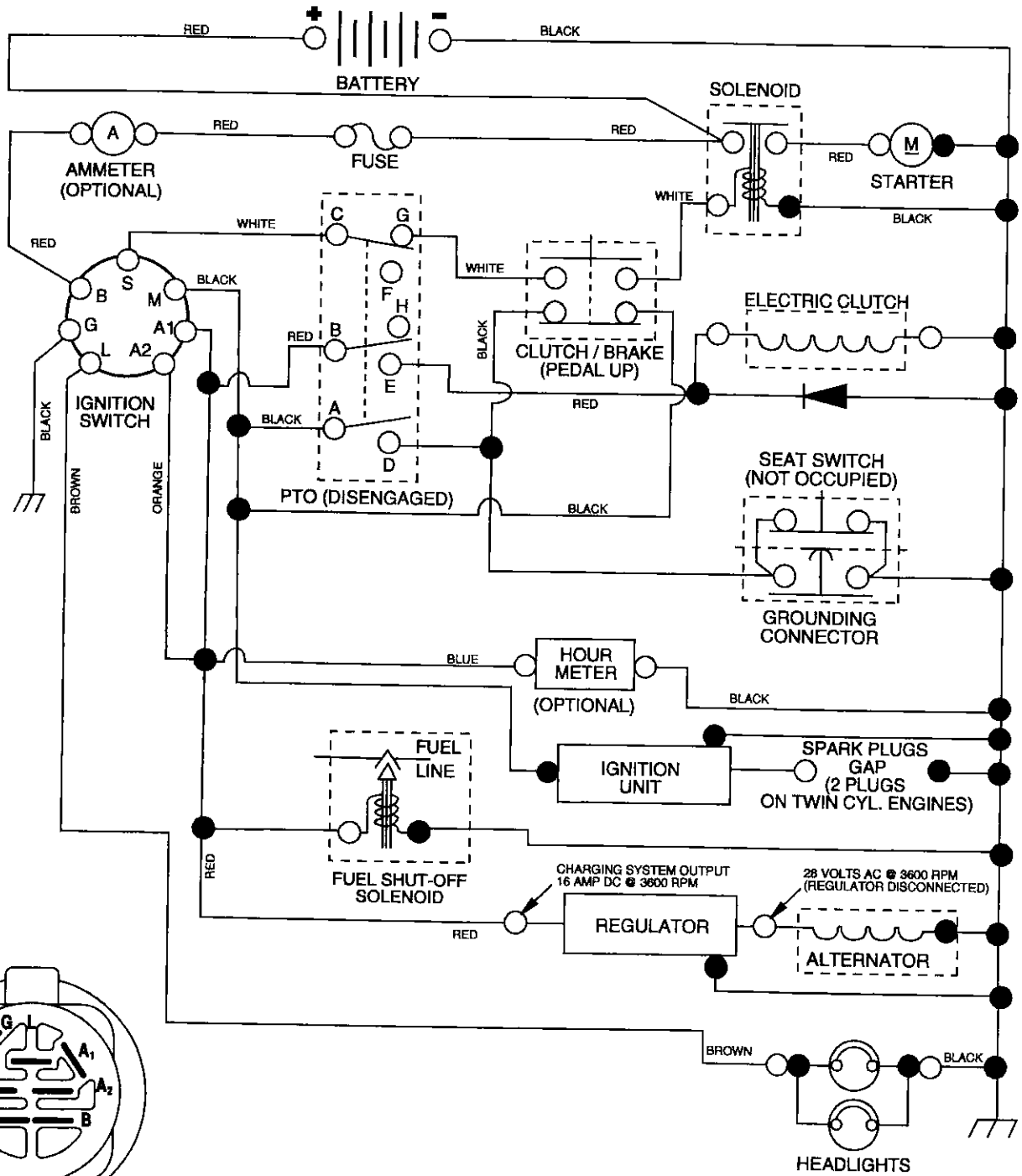
TABLE OF CONTENTS

SCHEMATIC	3
ELECTRICAL.....	4-5
CHASSIS.....	6-7
DRIVE.....	8-9
STEERING	10-11
SEAT	12
DECALS.....	13
ENGINE.....	14
MOWER LIFT.....	15
MOWER DECK	16-17
TRANSAXLE.....	18-19
ENGINE BREAKDOWN.....	20-23
WARRANTY.....	24

TRACTOR- -MODEL NO. 917. 277640

SCHEMATIC

02743_188032, 188034



IGNITION SWITCH

POSITION	CIRCUIT	"MAKE"
OFF	M + G + A1	NONE
ON + LIGHTS	B + A1	L + A2
ON	B + A1	NONE
START	B + S + A1	NONE

WIRING INSULATED CLIPS
NOTE: IF WIRING INSULATED CLIPS WERE REMOVED FOR SERVICING OF UNIT, THEY SHOULD BE REPLACED TO PROPERLY SECURE YOUR WIRING.

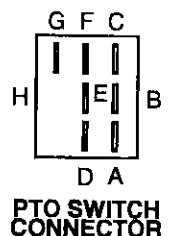
02743

PTO SWITCH

POSITION	CIRCUIT
OFF	C + G, B + H
ON	C + F, B + E, A + D

○ REMOVABLE CONNECTIONS

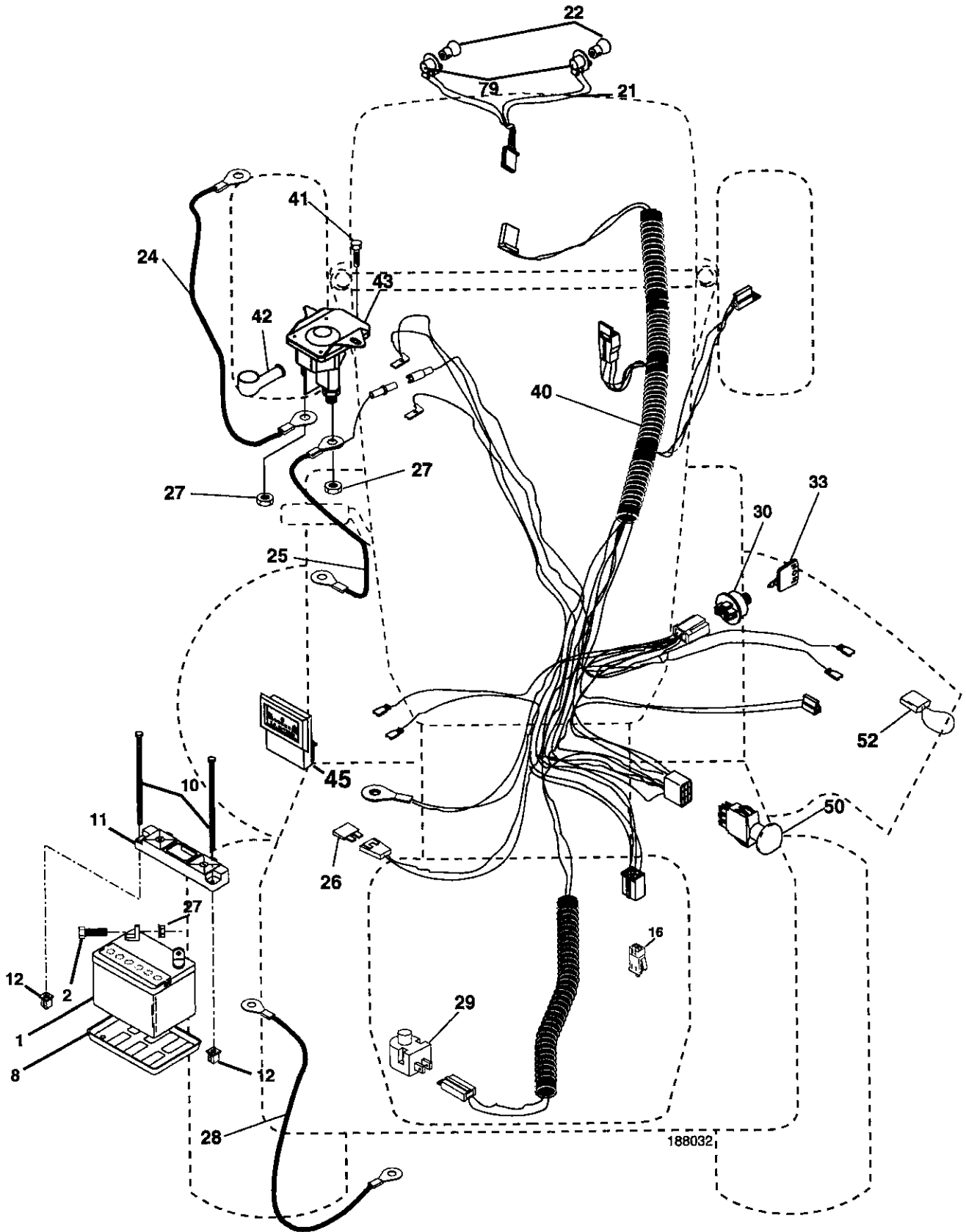
● NON-REMOVABLE CONNECTIONS



REPAIR PARTS

TRACTOR- -MODEL NO. 917. 277640

ELECTRICAL



REPAIR PARTS

TRACTOR- -MODEL NO. 917. 277640

ELECTRICAL

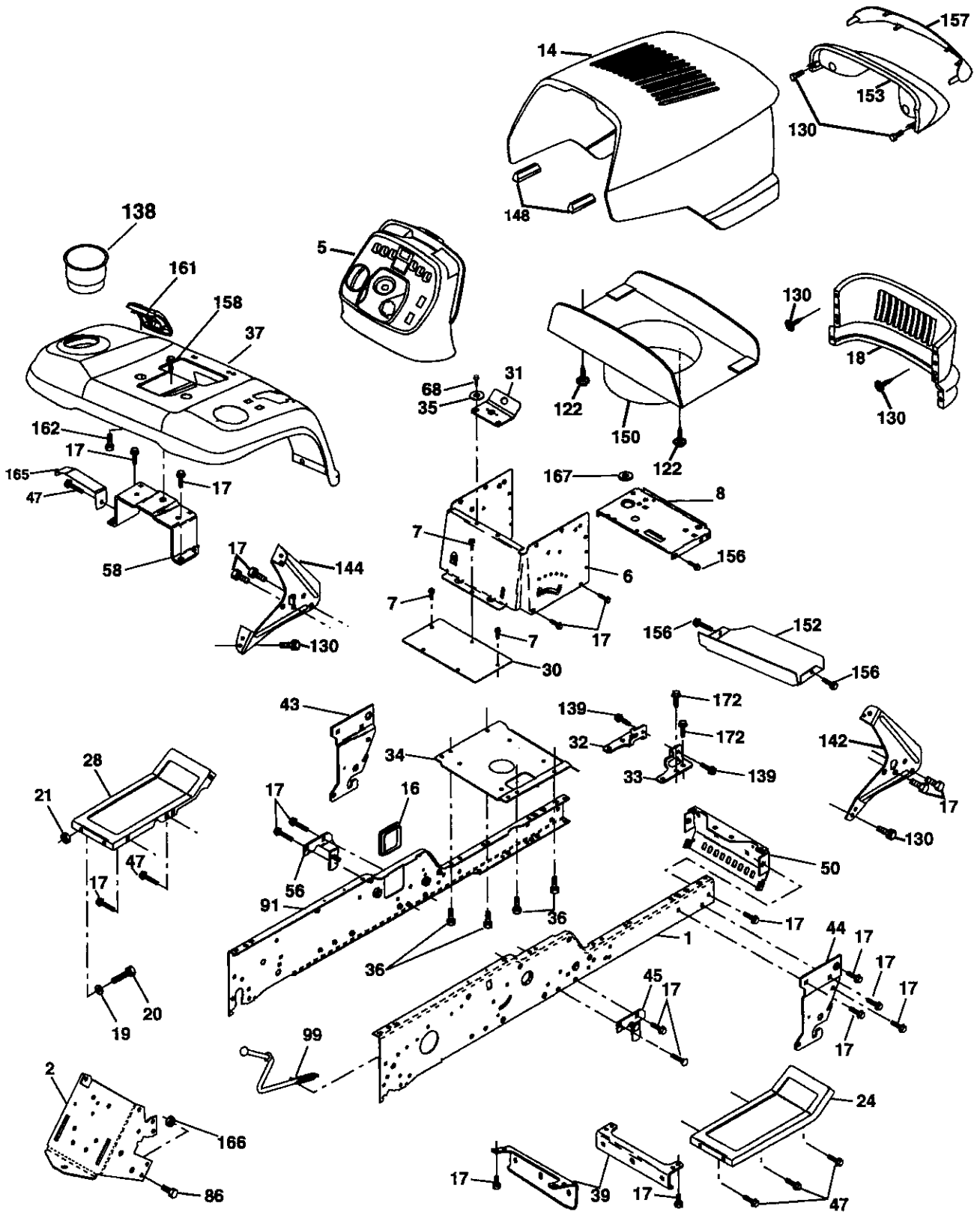
KEY NO.	PART NO.	DESCRIPTION
1	144927	Battery
2	74760412	Bolt Hex Head 1/4-20 x 3/4
8	7603J	Tray, Battery
10	145211	Bolt 1/4-20 x 7.5 Zinc
11	150109	Hold down Battery Dash Mount
12	145769	Nut Push Nylon 1/4"
16	176138	Switch Interlock Push-In
21	175688	Harness Socket Light W/4152J
22	4152J	Bulb Light
24	185464	Cable Starter
25	146149	Cable
26	108824X	Fuse
27	73510400	Nut Keps Hex 1/4-20 unc
28	170697	Cable, Ground
29	121305X	Switch, Plunger
30	175566	Switch, Ign
33	140403	Key, Ignition
40	188032	Harness Ign.
41	17720408	Screw 1/4-20 x 1/2
42	131563	Cover, Terminal
43	192507	Solenoid
45	122822X	Ammeter
50	174652	Switch, PTO
52	141940	Hourmeter Adaptor
79	175242	Bulbholder Asm Incandescent SV

NOTE: All component dimensions given in U. S. inches 1 inch = 25.4 mm

REPAIR PARTS

TRACTOR- -MODEL NO. 917. 277640

CHASSIS AND ENCLOSURES



chassis-stealth_43-vgt

REPAIR PARTS

TRACTOR- -MODEL NO. 917. 277640

CHASSIS AND ENCLOSURES

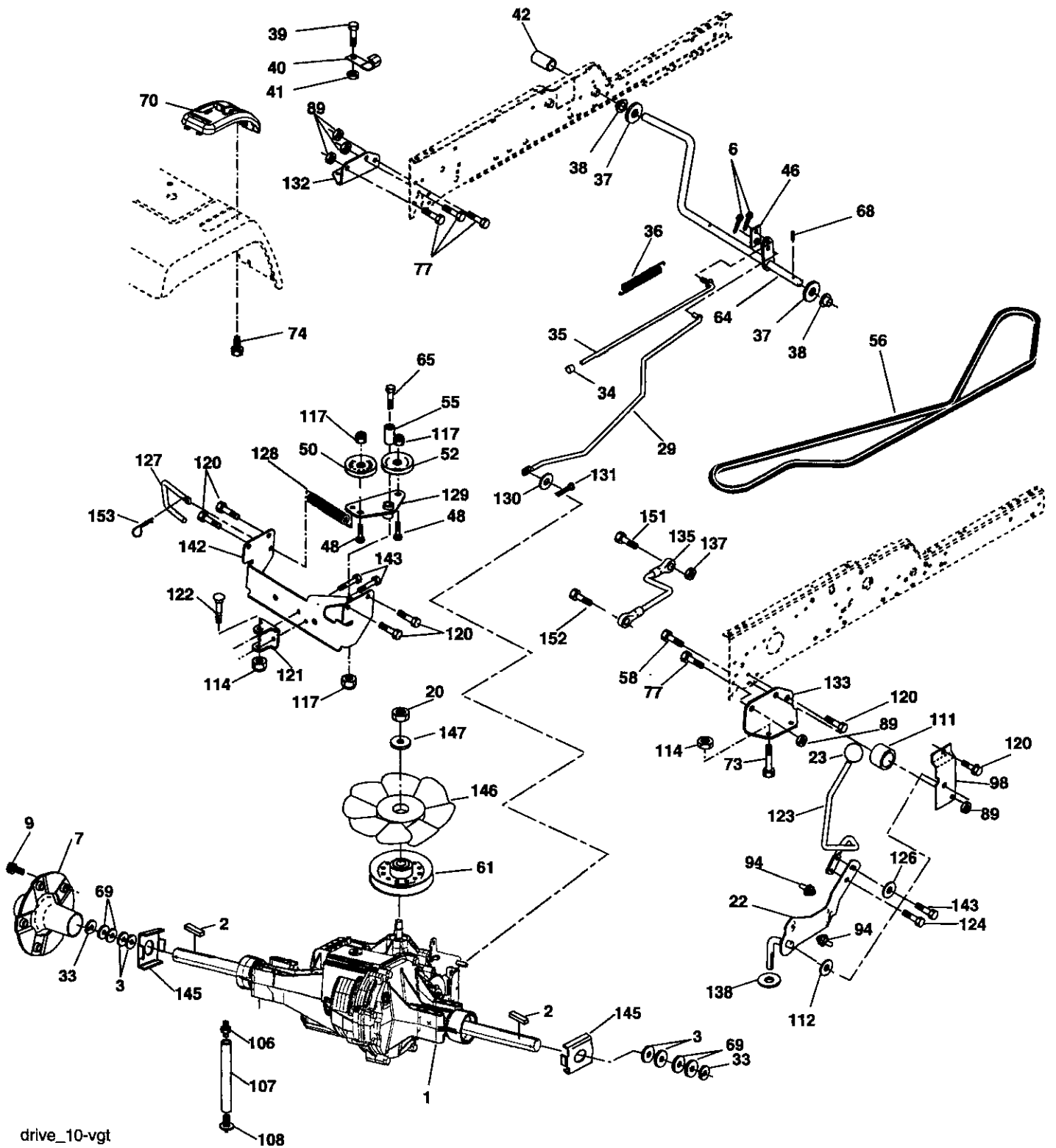
KEY NO.	PART NO.	DESCRIPTION	KEY NO.	PART NO.	DESCRIPTION
1	180375	Rail, Frame RH	58	183569	Bracket Asm., Fender
2	175282	Drawbar, Gt	68	17490508	Screw Thdrol. 5/16-18 x 1/2
4	73680700	Nut 7/16-14	86	74780716	Bolt Fin Hex 7/16-14 unc x 1 Gr. 5
5	193636X428	Dash	91	180374	Rail, Frame Lh
6	157882	Dash, Lower Vgt One Piece	99	177143	Rod By Pass
7	17720408	Screw, Thd Cut 1/4-20 x 1/2	122	192512	Screw Wshd Hex 10-32 x 5/8
8	184668	Support, Battery	130	191611	Screw 10 x 3/4 Single Lead Hex
14	175260X615	Hood Asm	138	191121X428	Cup Holder
16	121794X	Cover, Access	139	171873	Bolt Shoulder 5/16-18 TT
17	17000612	Screw 3/8-16 x .75	142	161897	Bracket Dash Rh
18	174515X615	Grille	144	161900	Bracket Dash Lh
19	19131312	Washer 13/32x13/16 x 12 Ga.	148	164655	Extrusion Bumpers
20	STD523710	Bolt, Fin Hex 3/8-16 x 1 Gr. 5	150	175352	Duct Heat Hood
21	STD541437	Nut Crownlock 3/8-16 unc	152	177956	Shield Browning
24	179717X615	Footrest, RH	153	179761	Lightbox Asm W/Lens (Includes key no. 157)
28	179716X615	Footrest, LH	156	17000512	Screw 5/16-18 x 3/4
30	145052	Saddle, Hydro	157	161840	Lens Bar
31	161419	Brace, Supt 1-pc VGT	158	17670608	Screw Thdrol 3/8-16 x 1/2
32	161327	Bracket, Pivot Chassis Lh	161	179612X428	Console Fuel Window
33	161326	Bracket, Pivot Chassis Rh	162	142432	Screw Hex 1/4-1/2 unc
34	177018	Plate Asm Engine	165	183554	Bracket Support Tank
35	19111116	Washer 11/32 x 11/16 x 16 Ga.	167	184672	Bushing Snap
36	17060512	Screw 5/16-18 x 3/4	172	17120614	Screw 3/8-16 x .875
37	192397X615	Fender Pnt	--	193640X428	Plug Switch Light
39	175278	Bracket, Axle Front			
43	136939	Bracket, Spnsn Front Lh			
44	136940	Bracket, Spnsn Front Rh			
45	176018	Bracket Asm., Susp Chas.Rh			
47	17490608	Screw Thdrol. 3/8-16 x 1/2			
50	175476	Bracket, Chassis Front			
56	176016	Bracket Asm., Susp Chas. Lh			

NOTE: All component dimensions given in U. S. inches 1 inch = 25.4 mm

REPAIR PARTS

TRACTOR- -MODEL NO. 917. 277640

DRIVE



REPAIR PARTS

TRACTOR- -MODEL NO. 917. 277640

DRIVE

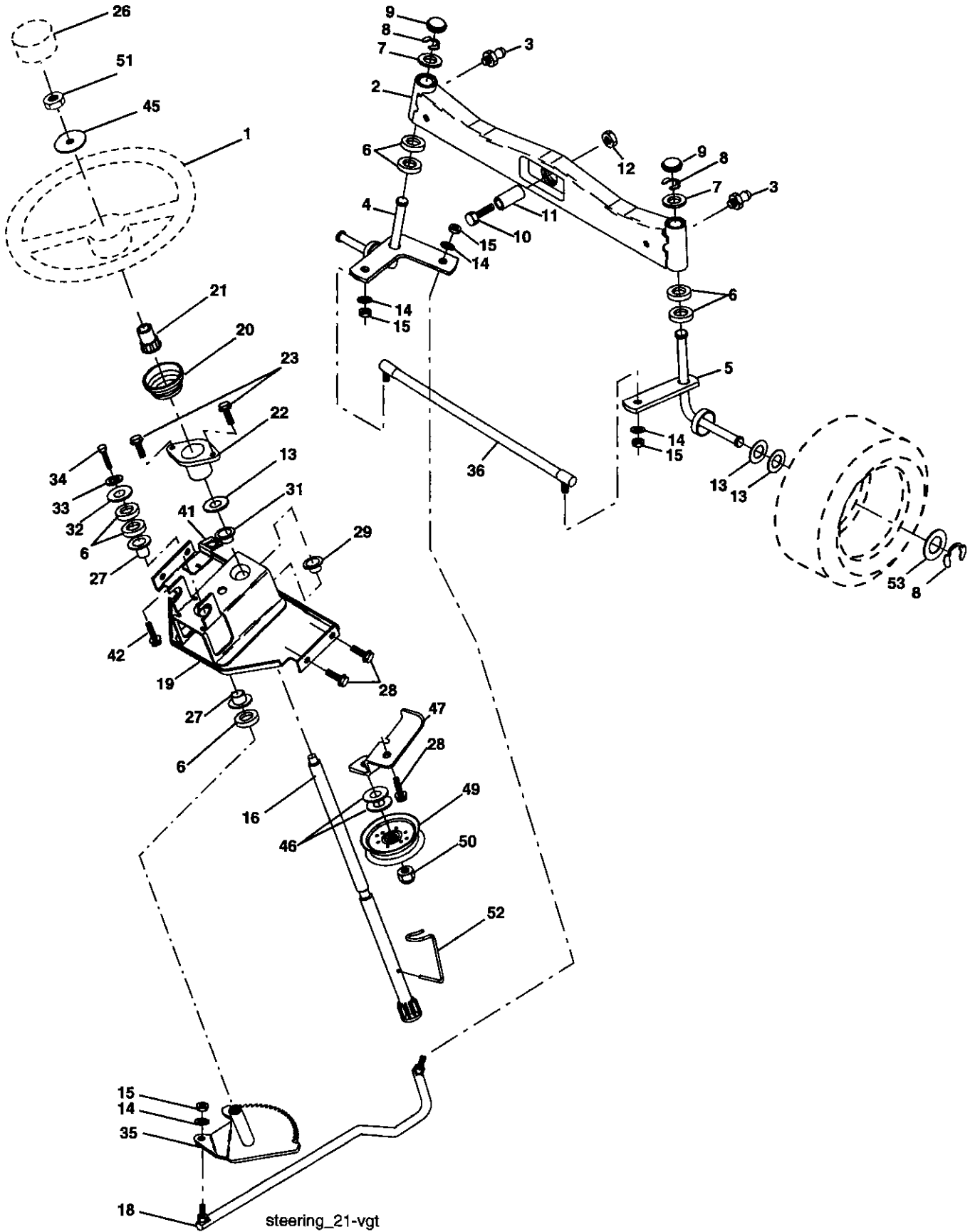
KEY NO.	PART NO.	DESCRIPTION	KEY NO.	PART NO.	DESCRIPTION
1	-----	Transaxle Hydro Gear 331-3000 (See Breakdown)	89	73680700	Nut Crownlock 7/16-14 Unc
2	7070E	Key 1/4 x 2.5	94	133835	Fastener Christmas Tree
3	7563R	Washer Thrust	98	141004	Bracket Shift
6	STD561210	Pin, Cotter	106	142918	O-Ring Asm Hydro Gear
7	140507	Wheel, Hub Assembly	107	154739	Line Fuel Hydro 15" VGT
9	140080	Bolt, Hub	108	142917	Cap Asm Vent Hydro Gear 70109
20	73940800	Nut	111	156240	Spacer Shift Lever VGTH
22	180235	Lever Asm Shift Lower	112	178558	Washer Nylon High Temp
23	130564	Knob	114	73800500	Nut Lock Hx W/Ins 5/16-18 Unc
29	176600	Brake, Rod	117	73900600	Nut, Lock Flg. 3/8-16
33	12000053	Ring E	120	17000612	Screw 3/8-16 x .75
34	71673	Cap, Parking Brake	121	175611	Bracket Strap Torque
35	137648	Rod, Parking Brake	122	72010520	Bolt RDHD SQ 5/16-18unc x 2-1/2
36	149412	Spring, Drive Ground	123	192438	Rod Shift
37	121749X	Washer 25/32 x 1-1/4 x 16 Ga.	124	165492	Bolt Shoulder 5/16-18 x .561
38	150035	Nyliner	126	166002	Washer SRRTD 5/16ID x 1.0 x .125
39	74321016	Screw, Fin. #10-24 x 1	127	177362	Link Control Clutch
40	178575	Actuator, Interlock Switch	128	176624	Spring Drive GRND
41	73931000	Nut Centerlock 10-24 Unc	129	179473	Bracket Asm Idler Tensioning
42	8883R	Cover, Pedal	130	19131016	Washer 13/32 x 5/8 x 16 Ga
46	145170	Retainer, Spring	131	76020312	Pin Cotter 3/32 x 3/4
48	72110614	Bolt, 3/8-16 x 1-3/4 Gr. 5	132	175467	Bracket Mtg Hydro 3500 LH VGT
50	131494	Pulley, Idler, Flat	133	175468	Bracket Mtg Hydro 3500 RH VGT
52	127783	Pulley, Idler, Grooved	135	177364	Link Asm Control Hydro 3500
55	105706X	Bearing, Idler	137	1685H	Nut Lock 5/16-18 NC Thd
56	161597	V-Belt	138	1370H	Washer Thrust 5/8 x 1.10 x 1/32
58	74760724	Bolt Fin Hex 7/16-14 x 1-1/2	142	175469	Strap Torque HG-3500
61	143995	Pulley, Transaxle	143	17000512	Screw Thdrol 5/16-18 x 3/4
64	176601	Shaft, Clutch/Brake Pedal	145	163168	Washer Axle Flange HG-3000
65	179613	Bolt, Shoulder	146	140462	Fan 7" Hydro
68	STD571812	Pin, Roll	147	141322	Washer
69	123800X	Washer	151	74760514	Bolt Fin Hex 5/16-18 x 7/8
70	192390X428	Console Automatic YT/GT	152	178705	Bolt hex 5/16-18 x 1
73	74490548	Bolt Hex Flghd 5/16-18 x 3 Gr. 5	153	4997H	Retainer Spring
74	142432	Screw Hex Wsh. Hi-Lo 1/4-1/2			
77	74780716	Bolt Hex 7/16-14 x 1-1/4 Gr. 5			

NOTE: All component dimensions given in U. S. inches 1 inch = 25.4 mm

REPAIR PARTS

TRACTOR- -MODEL NO. 917. 277640

STEERING ASSEMBLY



REPAIR PARTS

TRACTOR- -MODEL NO. 917. 277640

STEERING ASSEMBLY

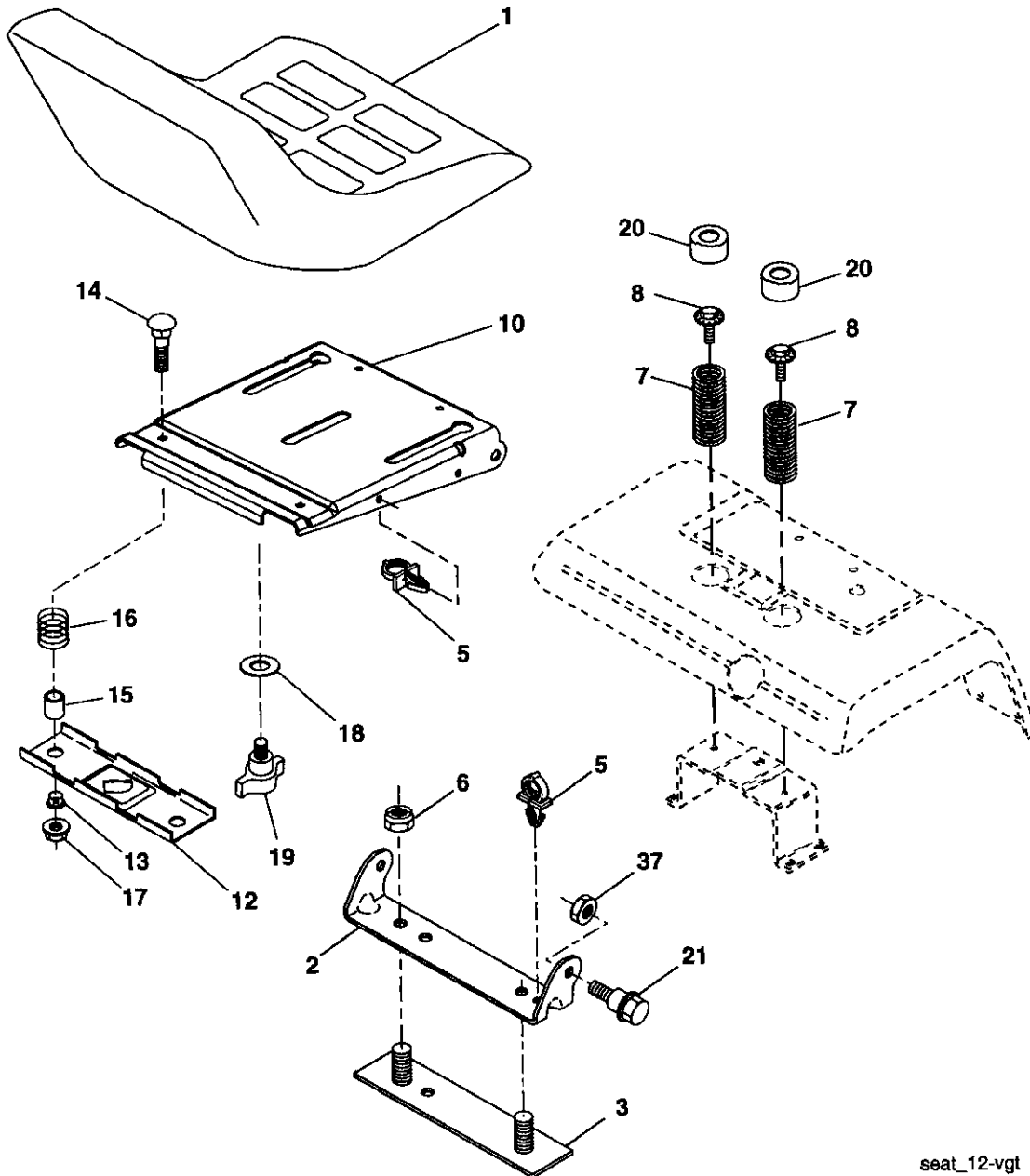
KEY NO.	PART NO.	DESCRIPTION
1	186094X428	Wheel, Steering
2	178557	Axle Asm., Front
3	183226	Fitting, Grease
4	161849	Spindle Asm, LH
5	161848	Spindle Asm., RH
6	6266H	Bearing, Race Thrust Harden
7	121748X	Washer 25/32 x 1-5/8 x 16 Ga.
8	1200029	Ring, Klip #T5304-75
9	184946X505	Cap, Spindle
10	74781044	Bolt, Fin Hex 5/8-11 x 2-3/4
11	136518	Spacer Bearing Axle Front
12	73901000	Nut, Lock Flange 5/8-11 Unc
13	121749X	Washer 25/32 x 1-1/4 x 16 Ga.
14	STD551137	Washer, Lock Hvy Hlcl Spr 3/8
15	STD541537	Nut, Lock Center 3/8-24 UNF
16	186814	Shaft Asm., Steering
18	175572	Draglink Vgt
19	156011	Support Asm., Steering Vgt
20	163887X428	Boot, Steering
21	186737	Adapter, Wheel Steering
22	155105	Bushing, Strg. Blk
23	152927	Screw
26	186095X428	Insert, Cap Steering Wheel
27	3366R	Bearing, Col. Strg.
28	17000612	Screw, 3/8-16 x 3/4
29	104239X	Bearing, Flange
31	138136	Bushing, Nyliner Snap
32	19111610	Washer 11/32 x 1 x 10 Ga.
33	STD551131	Washer, Lock Hvy Hlcl Spr 5/16
34	74780512	Bolt Fin Hex 5/16-18unc x 3/4
35	187039	Gear, Sector Steering
36	186799	Tie Rod
41	155246	Bracket Switch Interlock VGT 97
42	17490508	Screw Thdrol 5/16-18 x 1/2 Tyt
45	19183812	Washer 9/16 x 2-3/8 x 12 Ga.
46	19131610	Washer Flat 13/32 x 1 x 10 Ga.
47	179471	Bracket Asm Idler Stationary
49	175820	Pulley Idler Flat
50	73900600	Nut Lock Flg 3/8-16 UNC
51	73940800	Nut Hex Jam Toplock 1/2-20 unf
52	175553	Clip Steering .750
53	188967	Washer Hardened

NOTE: All component dimensions given in U. S. inches
1 inch = 25.4 mm

REPAIR PARTS

TRACTOR- -MODEL NO. 917. 277640

SEAT ASSEMBLY



seat_12-vgt

KEY NO.	PART NO.	DESCRIPTION
1	180598	Seat
2	180166	Bracket, Pivot Seat
3	140675	Strap, Fender Assembly
5	145006	Clip, Push In, Hinged
6	STD541437	Nut 3/8-16 Unc
7	124181X	Spring, Seat Cprsn
8	171877	Bolt 5/16-18Unc x 3/4 w/Sems
10	180186	Pan, Seat
12	121246X	Bracket, Mounting Switch
13	121248X	Bushing, Snap
14	72050412	Bolt, Carriage 1/4-20 x 1-1/2
15	121249X	Spacer, Split

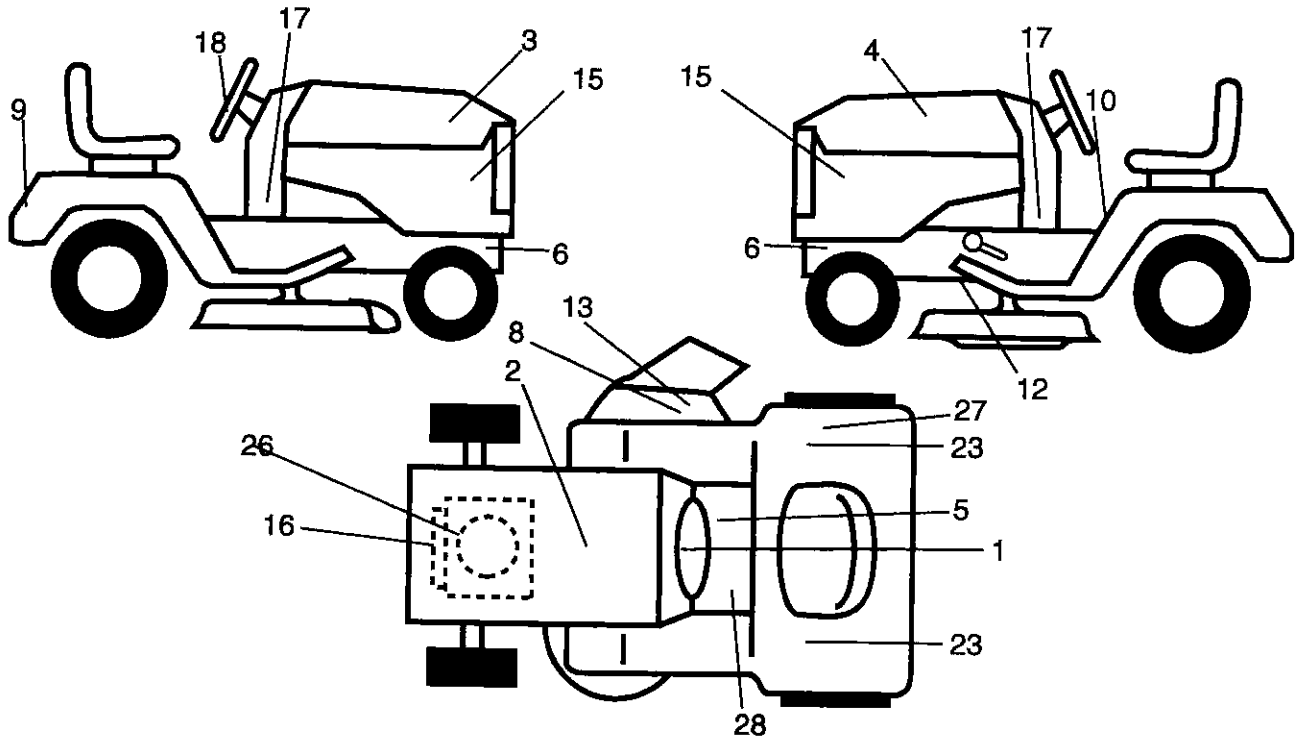
KEY NO.	PART NO.	DESCRIPTION
16	123740X	Spring, Cprsn
17	123976X	Nut, Lock 1/4 Lge Flg Gr. 5
18	19171912	Washer 17/32 x 1-3/16 x 12 Ga.
19	166369	Knob, Seat
20	124238X	Cap, Spring Seat
21	171852	Bolt, Shoulder 5/16-18
37	73800500	Nut, Lock Hx w/lns. 5/16-18

NOTE: All component dimensions given in U. S. inches 1 inch = 25.4 mm

REPAIR PARTS

TRACTOR- -MODEL NO. 917. 277640

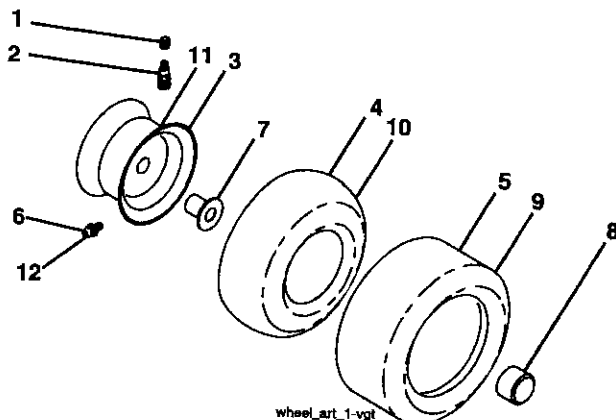
DECALS



KEY NO.	PART NO.	DESCRIPTION
1	164487	Decal Dash
2	145005	Decal Battery DNGR/PSN ENG Asm
3	186242	Decal Hood RH
4	186243	Decal Hood LH
5	140837	Decal Brake Parking Saddle
6	159736	Hot Muffler
8	182166	Decal Cut Finger
9	186572	Decal Fender
10	145498	Decal Read Manual
12	197491	Decal V-Belt Dr Sch
13	196357	Decal Cut Finger Sym
15	186725	Decal Hood Side Pnl
16	197672	Decal Engine
17	195890	Decal Dash Panel

KEY NO.	PART NO.	DESCRIPTION
18	164065	Decal Insert Strg
23	106202X	Reflector, Taillight
26	196841	Decal Warning Sym
27	180433	Decal DB/CE
28	177873	Decal Brake
--	179768X428	Pad Footrest LH
--	166960	Decal Drawbar Bypass
--	179769X428	Pad Footrest RH
--	162598	Decal Load Limit
--	197372	Operator's Euro
--	197373	Operator's Scan
--	197374	Manual parts

WHEELS AND TIRES



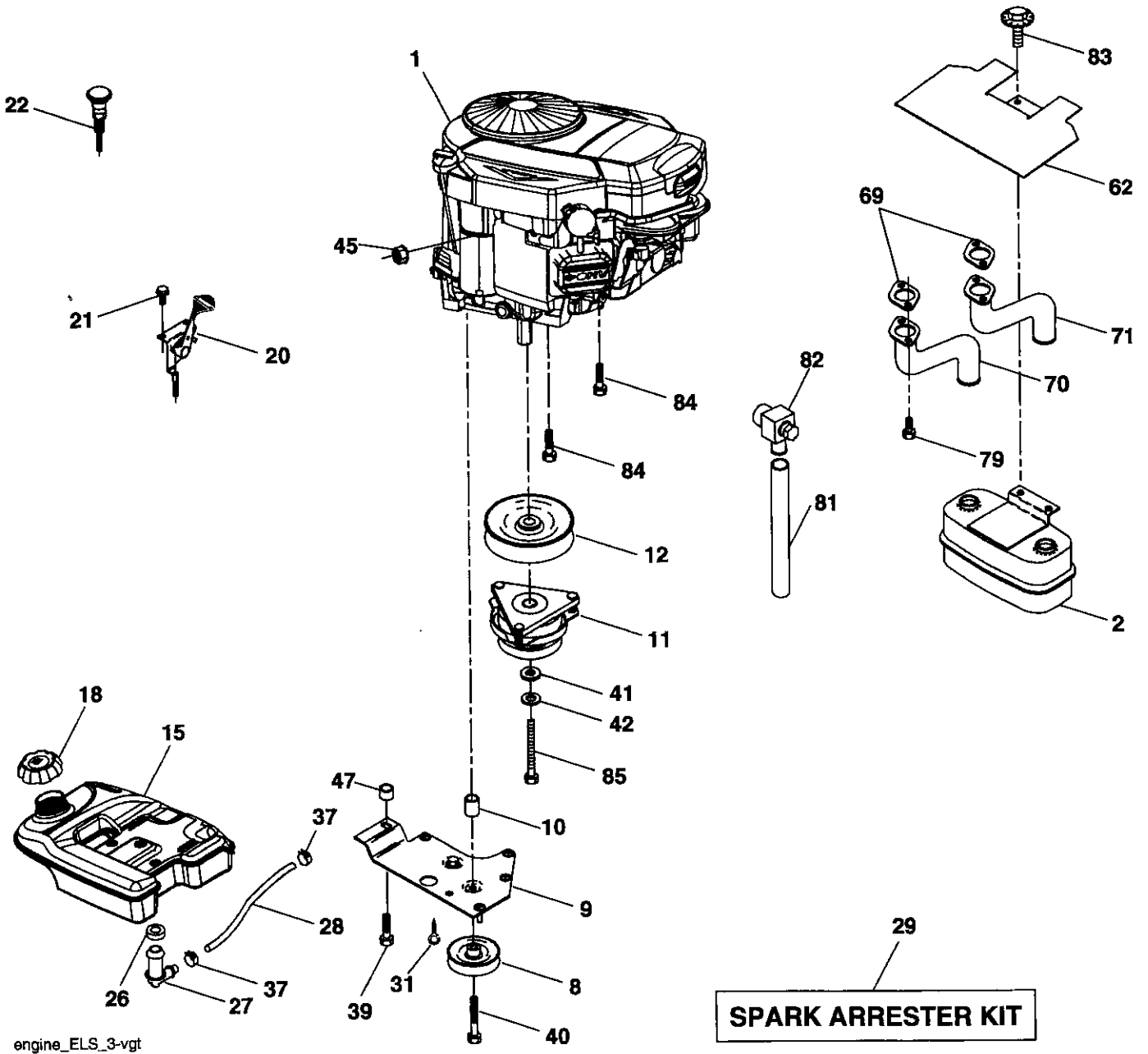
KEY NO.	PART NO.	DESCRIPTION
1	59192	Cap Valve Tire
2	65139	Stem Valve
3	106228X624	Rim Asm Front
4	8134H	Tube, Front (Service Item Only)
5	105588X	Tire, Front
6	278H	Fitting Grease (Front Wheel Only)
7	9040H	Bearing Flange(Front Wheel Only)
8	104757X428	Cap Axle (Front Wheel Only)
9	106230X	Tire Rear
10	7154J	Tube Rear (Service Item Only)
11	106277X624	Rim Asm Rear
12	6856M	Fitting Grease
--	144334	Sealant, Tire (10 oz. Tube)

NOTE: All component dimensions given in U. S. inches 1 inch = 25.4 mm

REPAIR PARTS

TRACTOR- -MODEL NO. 917. 277640

ENGINE



REPAIR PARTS

TRACTOR- -MODEL NO. 917. 277640

ENGINE

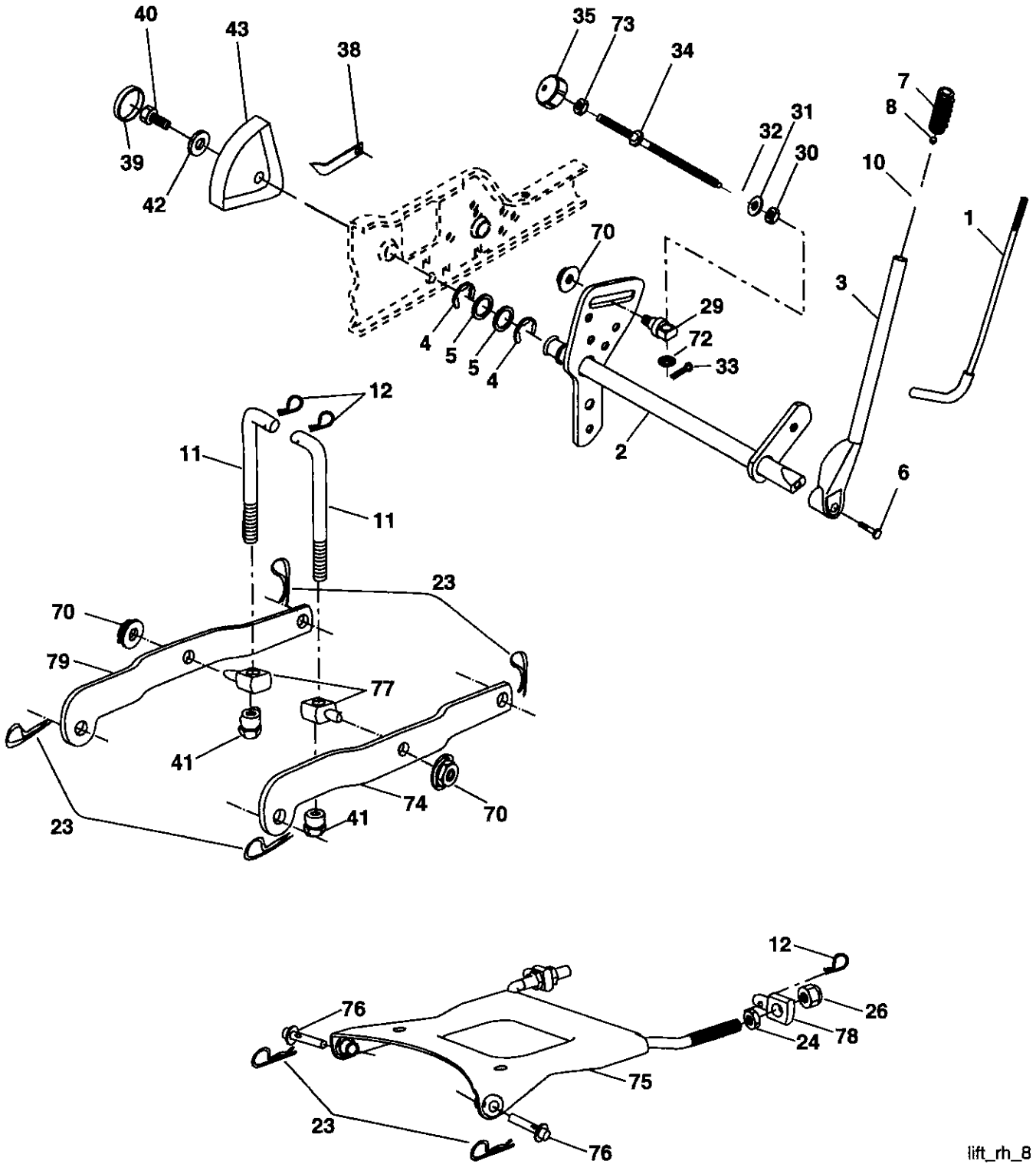
KEY NO.	PART NO.	DESCRIPTION	KEY NO.	PART NO.	DESCRIPTION
1	-----	Engine Briggs Model No. 446977-0505-E1	39	17490636	Screw TT 3/8-16 x 2-1/4 unc
2	149723	Muffler	40	17490664	Screw TT 3/8-16 x 4 unc
8	121361X	Pulley V-Idler	41	126197X	Washer 1-1/2 OD x 15/32 ID x .250
9	177748	Keeper Asm. Belt Engine	42	STD551143	Washer Lock 7/16
10	175287	Bushing	45	73510400	Nut Keps Hex 1/4-20 unc
11	179335	Clutch Electric	47	175288	Bushing
12	143996	Pulley Engine VGT Elect Clutch	62	146629	Shield Heat Muffler
15	179115	Tank Fuel Rear 5.0 Yt/Gt	69	165391	Gasket
18	179124X428	Cap Asm	70	176069	Tube Exhaust LH
20	175437X428	Control Throttle	71	176070	Tube Exhaust RH
21	191611	Screw 10 x 3/4 Single Lead Hex	79	183906	Screw Socket Head 5/16-18 x 1
22	187767X428	Control Choke	81	188800	Tube Drain Oil Easy
26	3645J	Bushing	82	188799	Valve Oil Drain
27	139277	Stem Tank Fuel	83	171877	Bolt 5/16-18 unc x 3/4 W/ Sems
28	7834R	Fuel Line	84	17060624	Screw 3/8-16 x 1-1/2
29	137180	Spark Arrester Kit	85	179953	Bolt Hex 7/16-20 x 3.75 Gr. 5
31	145006	Clip Push-In Hinged			
37	123487X	Clamp Hose			

NOTE: All component dimensions given in U.S. inches
1 inch = 25.4 mm

REPAIR PARTS

TRACTOR- -MODEL NO. 917. 277640

MOWER LIFT



lift_rh_B

REPAIR PARTS

TRACTOR- -MODEL NO. 917. 277640

MOWER LIFT

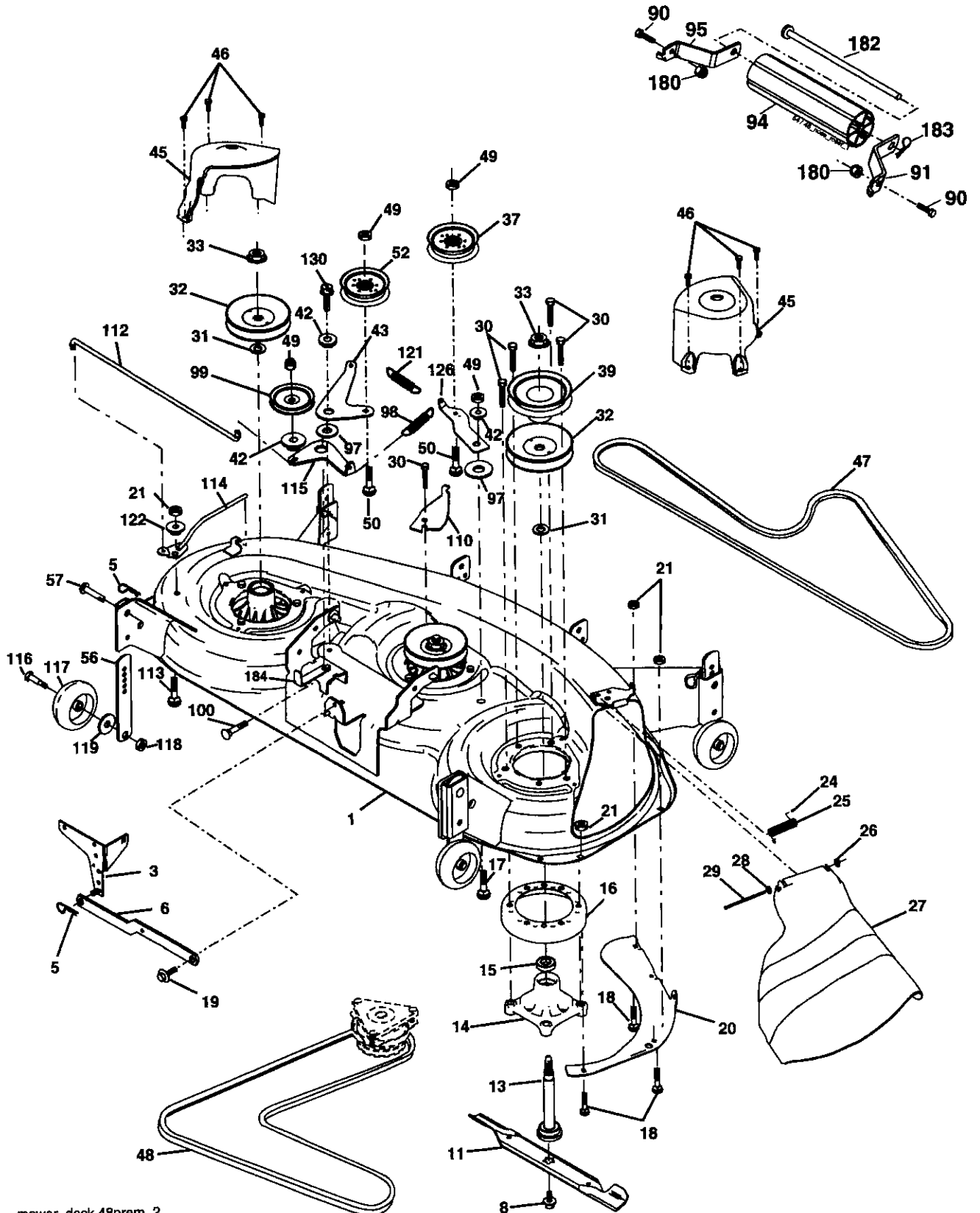
KEY NO.	PART NO.	DESCRIPTION	KEY NO.	PART NO.	DESCRIPTION
1	121006X	Rod Asm., Lever	35	138057	Knob, Inf 3/8-16 unc
2	180045	Shaft Asm., Lift Vgt	38	155097	Pointer, Height Indicator
3	159189	Lever Asm., Lift Rh	39	123935X	Plug, Hole
4	12000022	E-Ring Truarc #5133-87	40	17060516	Screw Hex Wsh 5/16-18 x 1
5	19292016	Washer 29/32 x 1-1/4 x 16 Ga.	41	175994	Nut, Lift Link 7/16-20
6	71110624	Bolt, Fin Hex 3/8-16 x 1-1/2	42	19112410	Washer 11/32 x 1-1/2 x 10 Ga.
7	175830	Grip, Handle Fluted	43	123934X	Scale, Indicator Height
8	175831X505	Plunger, Button	70	145212	Nut Hex Flange Lock
10	183894	Spring	72	110452X	Nut Push Phos & Oil
11	175375	Link Lift	73	73350600	Nut Hex Jam 3/8-16 unc
12	163552	Retainer Spring	74	175802	Arm Susp. Rear RH
23	STD624008	Retainer, Spring	75	175805	Plate Asm. Susp. Front
24	73350800	Nut, Jam Hex 1/2-13 unc	76	175560	Pin, Flange
26	73800800	Nut Lock 1/2-13 unc	77	176205	Trunnion Susp. Arm
29	150233	Trunnion, Infin Height	78	175689	Trunnion Susp. Front
30	110807X	Nut, Special	79	175378	Arm, susp. R LH
31	STD551037	Washer 13/32 x 5/8 x 16 Ga.			
32	137150	Spring, Compression Inf Hgt			
33	STD560907	Pin, Cotter 3/32 x 1/2			
34	137167	Rod, Adj Lift			

NOTE: All component dimensions given in U. S. inches 1 inch = 25.4 mm

REPAIR PARTS

TRACTOR- -MODEL NO. 917. 277640

MOWER



mower_deck.48prem_2

REPAIR PARTS

TRACTOR- -MODEL NO. 917. 277640

MOWER

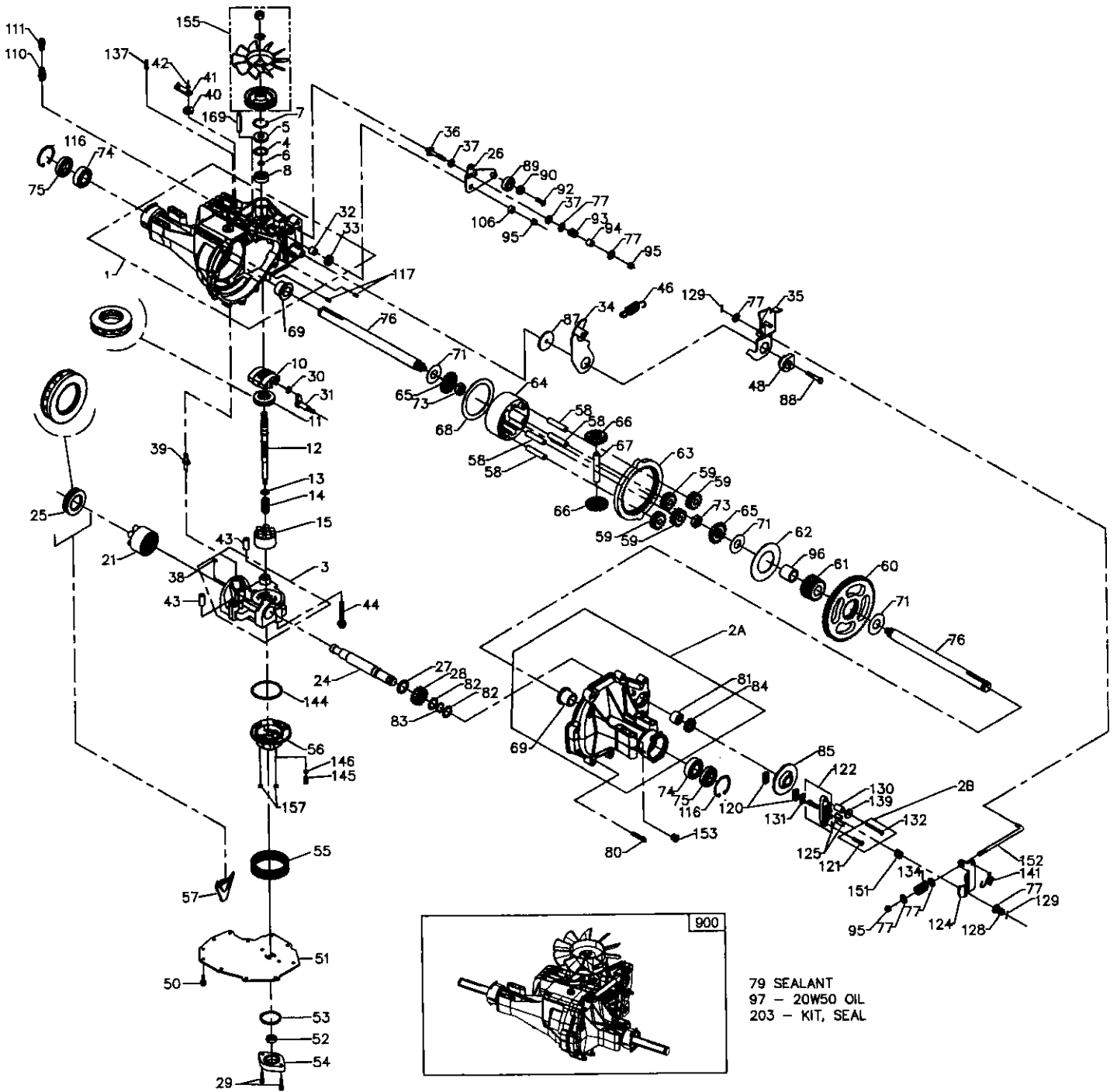
KEY NO.	PART NO.	DESCRIPTION	KEY NO.	PART NO.	DESCRIPTION
1	180358	Deck Weldment Mower 48	50	72110612	Bolt, Carr. 3/8-16 x 1-1/2 Gr. 5
3	178915	Bracket Asm., Sway Bar	52	175820	Pulley Idler Flat
5	4939M	Retainer Spring	56	155986	Bar Pnt Adj.
6	178024	Sway Bar	57	156941	Pin Head Rivet
8	174365	Bolt 7/16 Asm. Blade	90	74760516	Bolt Hex Hd. 5/16-18 UNC x 1
		(The following blades are available)	91	180535	Bracket, Asm Noseroller, RH
11	180054	Blade, 48" Hi-Lift	94	176066	Noseroller
13	174360	Shaft Asm. w/Lower Bearing	95	180534	Bracket, Asm Noseroller, LH
14	174358	Mandrel Asm.	97	178515	Washer Hardened
15	110485X	Bearing, Ball, Mandrel	98	179479	Spring Primary Drive
16	174493	Stripper Mandrel Deck	99	189993	Pulley Idler"V"
17	72110610	Bolt RDHD Sq Neck 3/8-16x1.25	100	72110616	Bolt RDHD Sqnk 3/8-16 Unc x 2
18	72140505	Bolt, Carriage 5/16-18 x 5/8	110	175016	Arm Spring Secondary
19	132827	Bolt, Hex Hd, Shoulder 5/16-18	112	174387	Link Tension Relief Lever
20	174378	Baffle, Vortex Mower	113	72110506	Bolt 5/16-18 x 3/4
21	73680500	Nut, Crownlock 5/16-18 Unc	114	174384	Tension Asm. Relief Lever
24	105304X	Cap, Sleeve	115	174609	Arm Spring Tension Relief
25	178102	Spring, Torsion	116	193406	Bolt, Shoulder
26	110452X	Nut, Push	117	174873	Gauge Wheel
27	180655X428	Deflector Shield	118	73930600	Nut, Centerlock 3/8-16 Unc
28	19111016	Washer 11/32 x 5/8 x 16 Ga.	119	19121414	Washer 3/8 x 7/8 x 14 Ga.
29	131491	Rod, Hinge	121	174371	Spring Secondary Drive
30	173984	Screw, Thdroll Washer Head	122	174606	Bushing Pivot Tension Relief
31	187690	Washer, Spacer	126	174372	Arm, Idler, Primary Deck
32	153535	Pulley, Mandrel	130	17000616	Screw 3/8-16 x 1.0
33	178342	Nut, Fig. Top Lock Cntr. 9/16	180	73800500	Nut Lock Hex w/Inc. 5/16-18 unc
37	177968	Pulley, Idler, Flat	182	179127	Rod Roller Nose
39	174375	Pulley, Idler, Driven	183	163552	Retainer Spring
42	165723	Spacer, Retainer	184	173979	Keeper Belt Idler
43	174373	Arm, Idler Secondary	--	174356	Mandrel Assembly
45	180806	Cover, Mandrel Deck			(Includes Key Nos. 13-15 and 33)
46	137729	Screw, Thdroll. 1/4-20 x 5/8	--	181579	Replacement Mower, Complete
47	180808	V-Belt, Mower, Secondary			
48	174368	V-Belt, Mower, Primary			
49	73900600	Nut, Lock 3/8-16 Unc			

NOTE: All component dimensions given in U. S. inches 1 inch = 25.4 mm

REPAIR PARTS

TRACTOR - -MODEL NO. 917. 277640

TRANSAXLE - MODEL NUMBER 331-3000



REPAIR PARTS

TRACTOR- -MODEL NO. 917. 277640

TRANSAXLE - MODEL NUMBER 331-3000

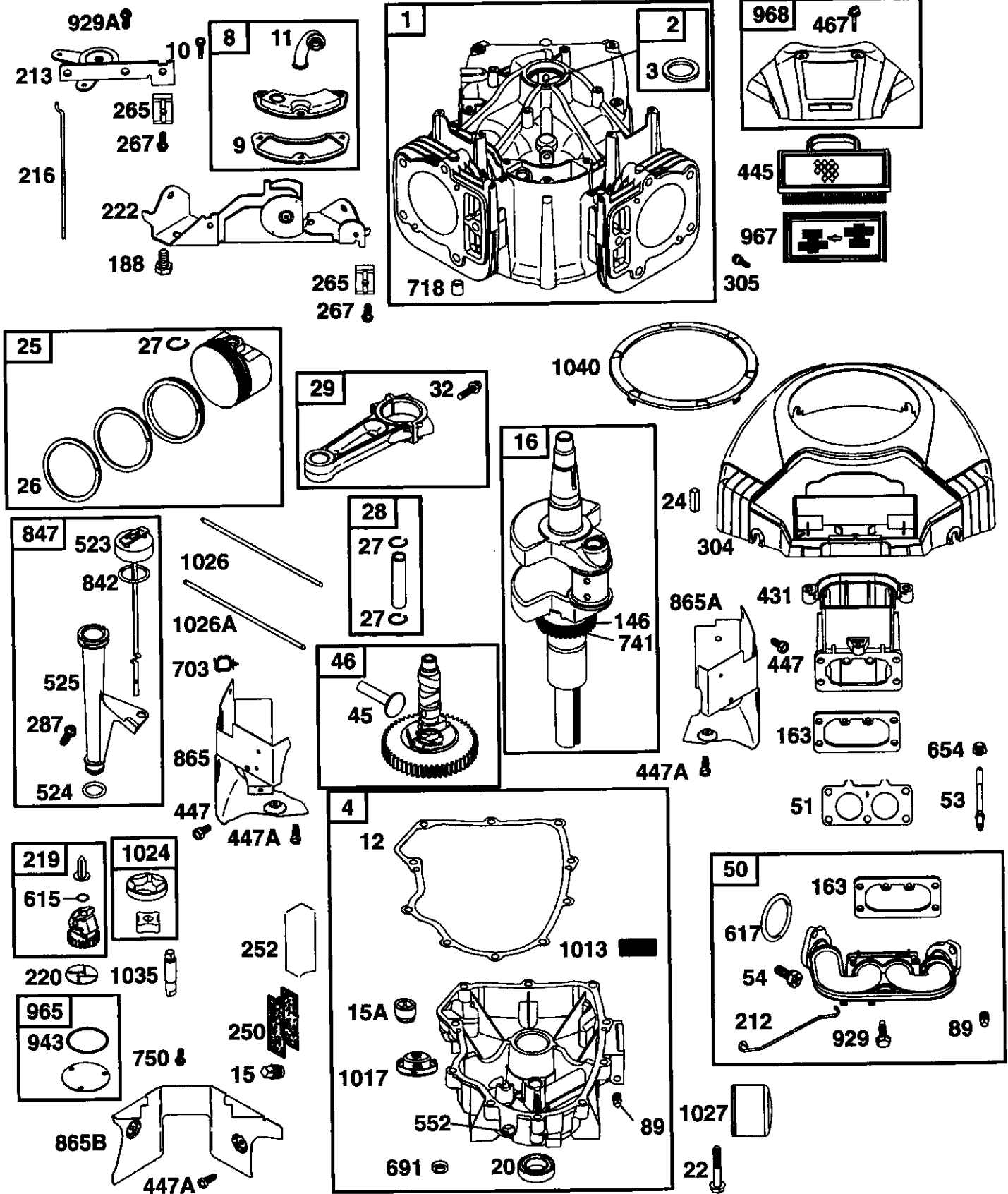
KEY NO.	PART NO.	DESCRIPTION	KEY NO.	PART NO.	DESCRIPTION
1	161122	Kit, housing main	65	161150	Gear, differential bevel (310-3000)
		Main housing	66	161151	Gear, differential bevel pinion (310-3000)
		Lip seal	67	161152	Shaft, differential (310-3000)
		Flange bearing	68	161153	Plate, differential thrust (310-3000)
		Trunnion bushing	69	169534	Bearing, flange (310-3000)
2A	193015	Kit, housing r/h	71	161155	Washer, flat (1.00 id) (310-3000)
		R.H. Housing	73	161156	Nut, 5/8-18 hex jam (310-3000)
		Flange bearing	74	169535	Bearing, ball (310-3000)
		Needle bearing (see 1412)	75	161157	Seal, lip (310-3000)
		Lip seal (.875 ID x 1.3 OD x .25)	76	161158	Shaft, axle (310-3000)
2B	193016	Kit, brake bolt	77	142884	Washer, flat
		Bolt, hex hd 1/4-20 x 1.25 W/patch	79	178322	Sealant tube
		Bolt, hex hd 1/4-20 x 2.25 W/patch	80	161159	Screw, torx head 5/16-18 (310-3000)
3	184703	Kit, center section	81	161160	Bearing, needle (210-3000)
		Center section	82	161161	Washer, flat (0.880 ID) (310-3000)
		Bushing .50 X .60 X .50	83	161162	Ring, retaining (310-3000)
		Bushing .90 X 1.02 X .75	84	161163	Seal, lip (.875 ID x 1.38 OD x .25) (310-3000)
		Plate, bypass	85	161164	Brake disc (310-3000)
		Check plug assembly, .044	87	178323	Washer (310-3000)
		Check plug assembly, no bleed	88	178784	Screw, 5/16-24x 1 1/2 socket head cap (310-3000)
4	161125	Spacer (BDP, BDU 10)	89	178783	Bearing, ball
5	142932	Seal, lip	90	178326	Spacer, locating (310-3000)
6	142928	Retaining ring	92	178787	Screw (310-3000)
7	142933	Retaining ring	93	142969	Spring
8	142934	Bearing, ball	94	142980	Spacer
10	169524	Swash plate (BDP, BDU 10)	95	169537	Nut, nylon insert hex lock 5/16-24
11	173159	Bearing, thrust (10cc)	96	169538	Bearing, sleeve (310-3000)
12	161126	Shaft, input (310-3000)	97	---	20W-50 oil 122 oz
13	142978	Washer, block thrust	106	161166	Spacer, trunnion (310-3000)
14	142977	Spring, helical compression	108	150800	Plug, plastic shipping
15	169898	Kit, cylinder block (10cc)	110	150813	O-ring
		10CC cylinder block			Fitting, plastic hose
		10CC piston			O-ring
		10CC piston spring	111	150812	Breather vent, plastic
		Piston seat washer			Vent, plastic
21	150786	Block, (BD-21& IHT)			Vent, cap
		21CC Cylinder block	116	169539	Ring, retaining (310-3000)
		Piston seat washer	117	161168	Pin
		21CC piston	120	142883	Brake puck
		21CC piston spring	121	193019	Bolt, hex hd 1/4-20 x 1.25 W/patch
24	161127	Shaft, motor (310-3000)	122	178329	Kit, brake yoke
25	169526	Bearing, thrust (21cc)	124	178330	Brake arm
26	161128	Control arm (310-3000)	125	170409	Pin, brake actuating
27	161129	Spacer (310-3000)	128	170415	Nut, castle 5/16-24
28	161130	Gear, 16t pinion	129	170416	Pin, cotter 3/32x3/4
29	169527	Capscrew	130	170411	Spacer, brake torsion spring
30	142941	Guide block (BD-21)	131	142882	Brake puck plate
31	169887	Trunnion, tapered square	132	193020	Bolt, hex hd 1/4-20 x 2.25 W/patch
32	161133	Bearing, journal	134	178331	Brake comp. Spring
33	142940	Seal, lip	137	178333	Pin, spring (310-3000)
34	178318	Return arm (310-3000)	139	161176	Washer, flat
35	178319	Actuating arm (310-3000)	141	178335	Spring, brake arm bias
36	170421	Bolt, stud 5/16-24	144	169545	O-ring
37	142967	Friction puck	145	169546	Spring, relief
38	184694	Kit, bypass plate	146	169547	Steel ball 7/16
39	169529	Bypass actuator (IHT)	151	170417	Brake spring
40	142945	Seal, lip	152	178336	Brake pull rod
41	142952	Bypass arm	153	170434	Plug, straight thread 9/16-18
42	142953	Retaining ring	155	178337	Kit, fan/pulley
43	142965	Pin			Nut, jam 1/2-20
44	150797	Bolt 3/8-24 x 2-1/2			Washer, OD slotted .53 X 1.63 X .06
46	184702	Spring, neutral (310-3000)			Pulley
48	178320	Puck, adjusting (310-3000)			Fan
50	178343	Screw, hex head washer cap screw (IZT) 1/4-20 x 3/4	157	169548	O-ring
51	169530	Lower cover	169	184701	Pin, spring 5/16 x 1.75
52	169531	Gerotor assembly	203	178338	Kit, seal
53	144581	O-ring			Lip seal 15 x 5 x 37
54	161139	Charge pump housing			Lip seal 12 x 25 x 7
55	178321	Kit, filter			Lip seal 10 x 25 x 7
		Gasket .10 X .16 X 4.24			O-ring .103 X 1.862
		Filter			Seal 25 x 52 x 10
56	169533	Charge manifold 310-3000			Lip seal .875 ID x 1.3 OD x .25
57	161142	Retainer, motor bearing (310-3000)			O-ring .070 X .239
58	161143	Pin, carrier (310-3000)			Kit, o-ring, manifold
59	161144	Gear, 15t planet (310-3000)			Pin, spring 5/16 x 1.75
60	161145	Gear, 67t spur (310-3000)			Pin, spring 1/4 x 1.00
61	161146	Gear, 21t sun (310-3000)	900	176056	Transaxle
62	161147	Plate, planet thrust (310-3000)			
63	161148	Gear, 51t ring (310-3000)			
64	161149	Carrier, planetary (310-3000)			

Note: All Component Dimensions Given In U.s. Inches 1 Inch = 25.4 MM

REPAIR PARTS

TRACTOR- -MODEL NO. 917. 277640

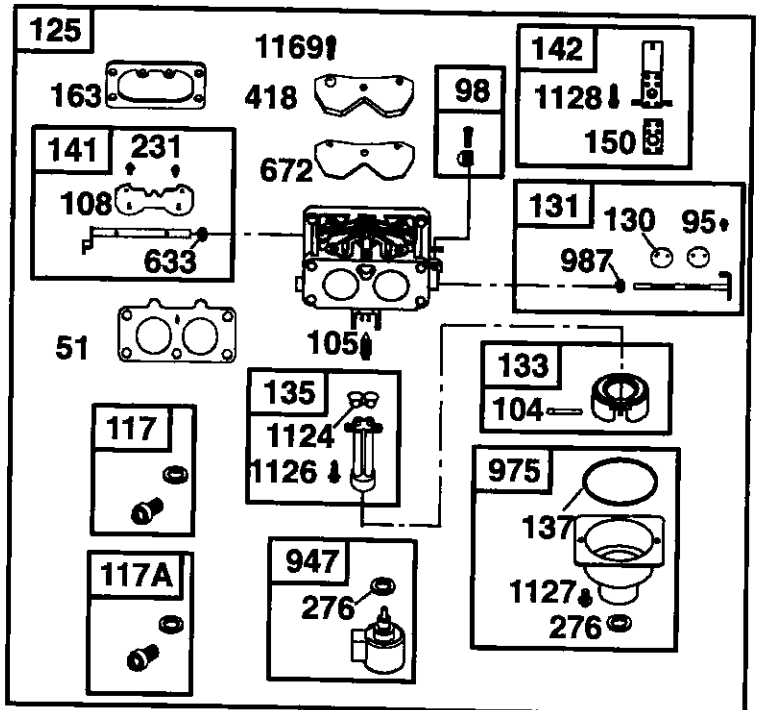
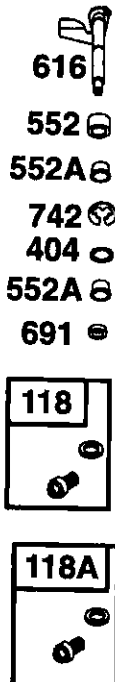
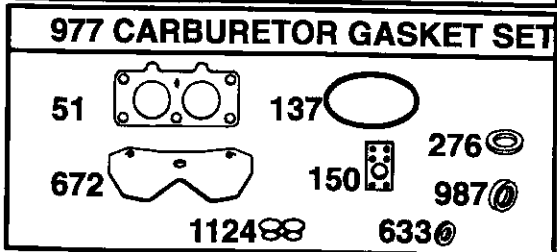
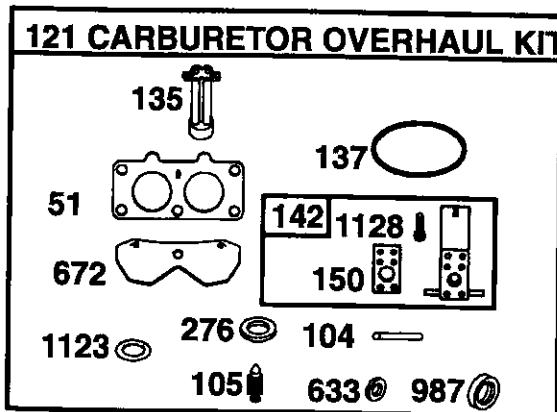
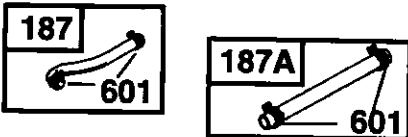
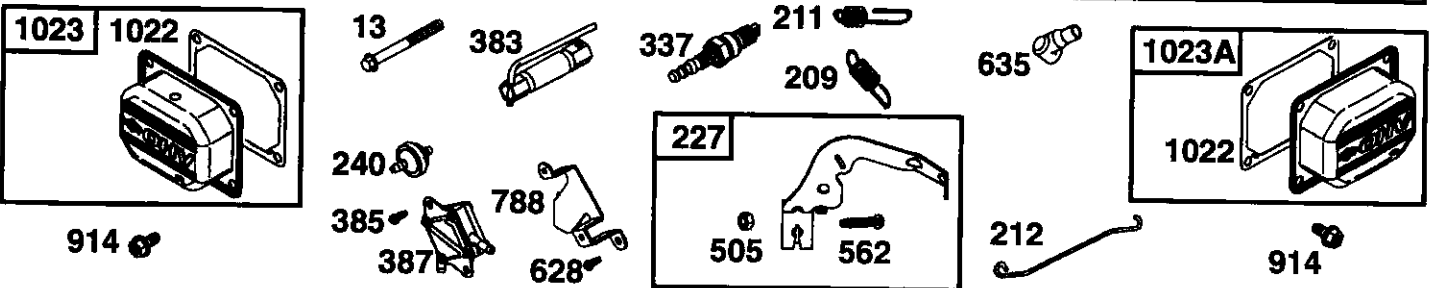
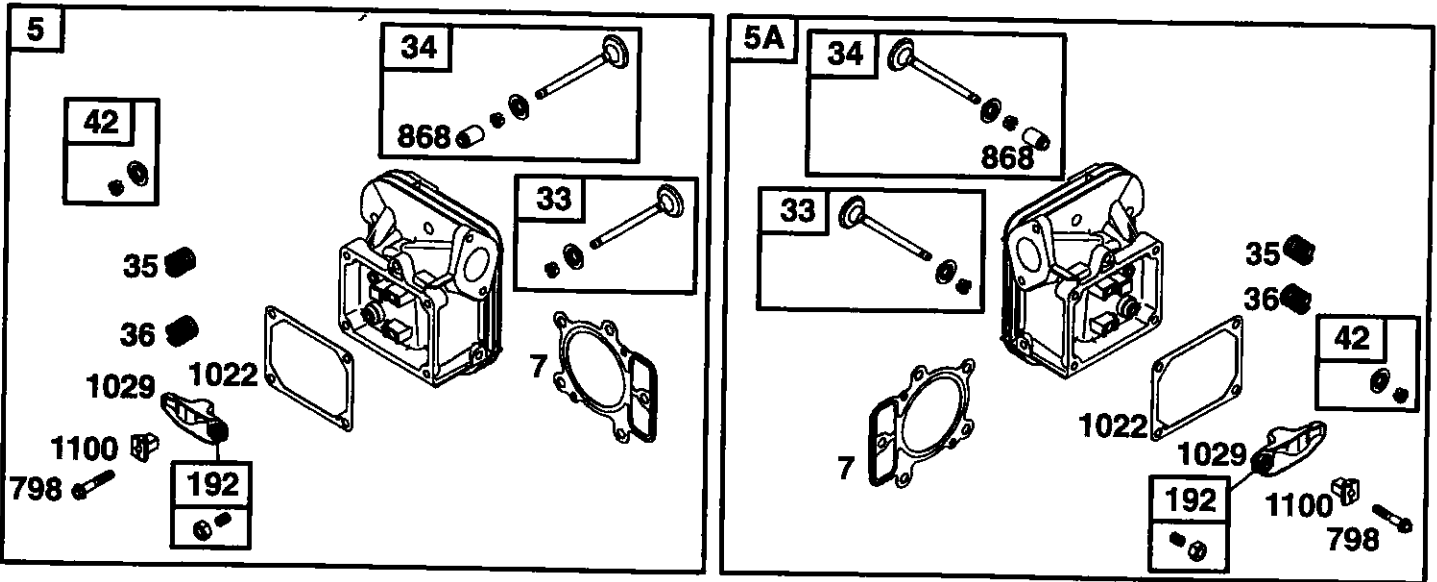
BRIGGS & STRATTON ENGINE - - MODEL NUMBER 446977, TYPE NUMBER 0505-E1



REPAIR PARTS

TRACTOR- -MODEL NO. 917. 277640

BRIGGS & STRATTON ENGINE - - MODEL NUMBER 446977, TYPE NUMBER 0505-E1

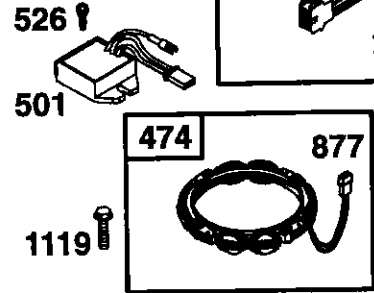
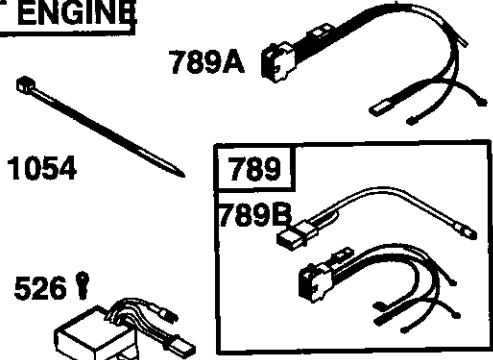
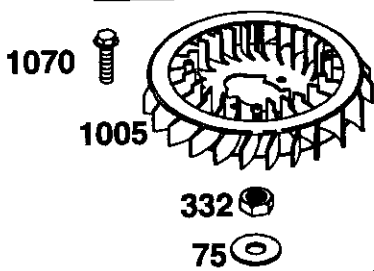
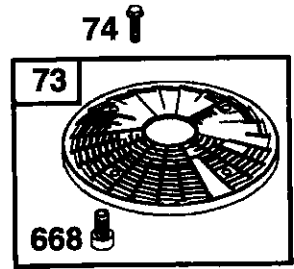


REPAIR PARTS

TRACTOR- -MODEL NO. 917. 277640

BRIGGS & STRATTON ENGINE - - MODEL NUMBER 446977, TYPE NUMBER 0505-E1

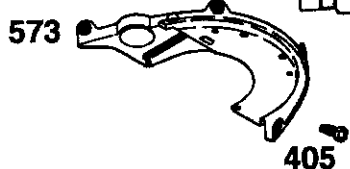
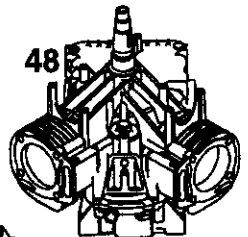
1329 REPLACEMENT ENGINE



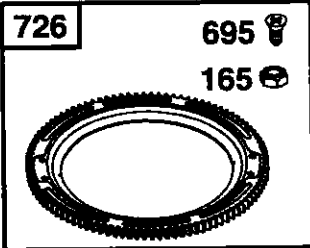
1036 EMISSION LABEL

1019 LABEL KIT

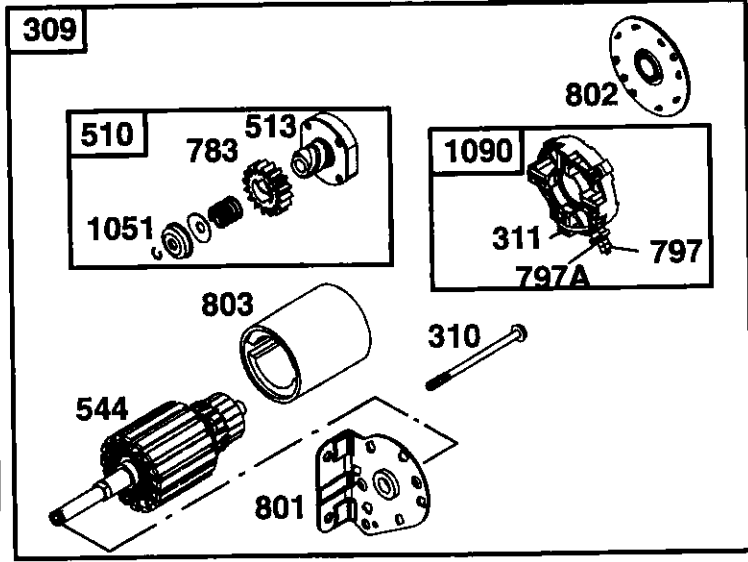
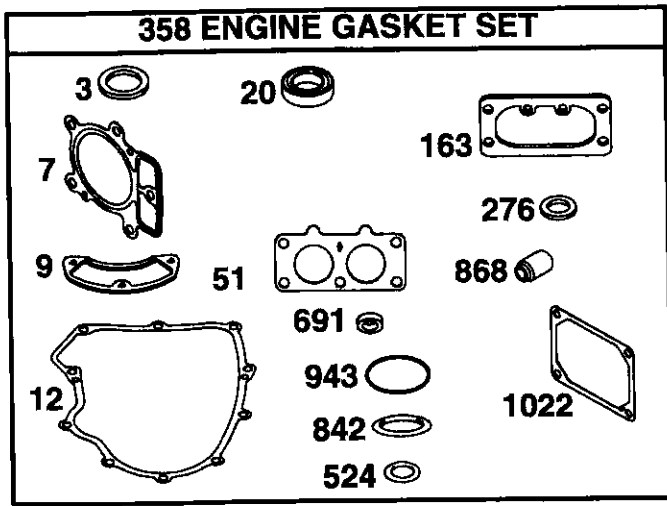
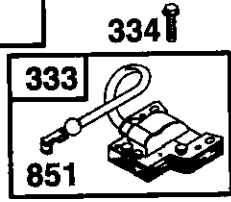
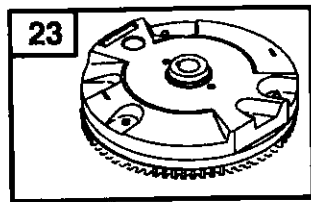
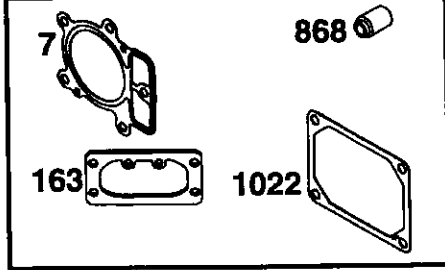
1058 OWNER'S MANUAL



1330 REPAIR MANUAL



1095 VALVE GASKET SET



REPAIR PARTS

TRACTOR- -MODEL NO. 917. 277640

BRIGGS & STRATTON ENGINE - - MODEL NUMBER 446977, TYPE NUMBER 0505-E1

KEY NO.	PART NO.	DESCRIPTION	KEY NO.	PART NO.	DESCRIPTION
1	699753	Cylinder Assembly	131	499805	Kit-Throttle Shaft
2	499585	Kit-Bushing/Seal (Magneto Side)	133	699724	Float-Carburetor
3	391086 *	Seal-Oil (Magneto Side)	135	699729	Tube-Fuel Transfer
4	699747	Sump-Engine	137	690994 Ø‡	Gasket-Float Bowl
5	697580	Head-Cylinder (Cylinder 1)	141	499807	Kit-Choke Shaft
5A	697581	Head-Cylinder (Cylinder 2)	142	699726 Ø	Nozzle-Carburetor
7	693997 **	Gasket-Cylinder Head	146	690979	Key-Timing
8	499601	Breather Assembly	150	690995 Ø‡	Gasket-Nozzle
9	690937 *	Gasket-Breather	163	691001 **	Gasket-Air Cleaner
10	691108	Screw (Breather Assembly)	165	693148	Nut (Ring Gear)
11	690942	Tube-Breather	187	697712	Line-Fuel
12	697227 *	Gasket-Crankcase	187A	698742	Line-Fuel (Cut to Required Length)
13	690360	Screw (Cylinder Head)	188	691108	Screw (Control Bracket)
15	690946	Plug-Oil Drain	192	690083	Adjuster-Rocker Arm
15A	691680	Plug-Oil Drain	209	697674	Spring-Governor
16	790132	Crankshaft	211	691019	Spring-Governed Idle
20	690947 *	Seal-Oil (PTO Side)	212	695238	Link-Governor
22	694966 *	Screw (Crankcase Cover)	213	691021	Bracket-Choke Control
23	691053	Flywheel	216	691022	Link-Choke
24	222698	Key-Flywheel	219	698231	Gear-Governor
25	697679	Piston Assembly (Standard)	220	690412	Washer (Governor Gear)
--	697681	Piston Assembly (.020" Oversize)	222	698757	Bracket-Control
26	697683	Ring Set (Standard)	227	691048	Lever-Governor Control
--	697685	Ring Set (.020" Oversize)	231	690718	Screw (Choke Valve)
27	690975	Lock-Piston Pin	240	695866	Filter-Fuel
28	690229	Pin-Piston (Standard)	250	690957	Retainer-Breather
29	699699	Rod-Connecting (Standard)	252	690956	Collector-Oil
32	690976	Screw (Connecting Rod)	265	691024	Clamp-Casing
33	499596	Valve-Exhaust	267	695134	Screw (Casing Clamp)
34	499597	Valve-Intake	276	690997 *Ø‡	Washer-Sealing
35	690963	Spring-Valve (Intake)	287	691108	Screw (Dipstick/Tube Assembly)
36	690963	Spring-Valve (Exhaust)	304	791243	Housing-Blower
42	499586	Keeper-Valve	305	790690	Screw (Blower Housing)
45	690977	Tappet-Valve	309	691262	Motor-Starter
46	791235	Camshaft	310	691263	Screw (Starter Motor)
48	698173	Short Block	311	497608	Brush Set
50	695241	Manifold-Intake	332	691059	Nut (Flywheel)
51	690950 *Ø‡	Gasket-Intake	333	691060	Armature-Magneto
53	690951	Stud (Carburetor)	334	691061	Screw (Magneto Armature)
54	494439	Screw (Intake Manifold)	337	691043	Spark Plug
73	691055	Screen-Rotating	358	694012	Gasket Set-Engine
74	698425	Screw (Rotating Screen)	363	691062	Puller-Flywheel
75	691056	Washer (Flywheel)	383	690966	Wrench-Spark Plug
89	690283	Plug-Oil	385	691108	Screw (Fuel Pump)
95	690718	Screw (Throttle Valve)	387	808656	Pump-Fuel
98	699721	Kit-Idle Speed	404	690442	Washer (Governor Crank)
104	694918 Ø	Pin-Float Hinge	405	697820	Screw (Back Plate)
105	698537 Ø	Valve-Float Needle			
108	699723	Valve-Choke			
117	699436	Jet-Main (Left, Standard)			
117A	699437	Jet-Main (Right, Standard)			
118	699458	Jet-Main (Right, High Altitude)			
118A	790890	Jet-Main (Left, High Altitude)			
121	699734	Kit-Carburetor Overhaul			
125	791230	Carburetor			
130	690993	Valve-Throttle			

- * Included in Engine Gasket Set, Key. No. 358
- Ø Included in Carburetor Overhaul Kit, Key. No. 121
- ‡ Included in Carburetor Gasket Set, Key. No. 977
- + Included in Valve Overhaul Kit, Key. No. 1095

NOTE: All component dimensions given in U.S. inches 1 inch = 25.4 mm

REPAIR PARTS

TRACTOR- -MODEL NO. 917. 277640

BRIGGS & STRATTON ENGINE - - MODEL NUMBER 446977, TYPE NUMBER 0505-E1

KEY NO.	PART NO.	DESCRIPTION	KEY NO.	PART NO.	DESCRIPTION
418	690999	Plate-Carburetor	865A	691014	Cover-Air Guide (Cylinder 2)
431	790816	Elbow-Intake	865B	691015	Cover-Air Guide
445	698754	Filter-Air Cleaner Cartridge	868	690968 *+	Seal-Valve
447	691003	Screw (Air Guide Cover)	877	399916	Wire/Connector-Alternator
447A	691108	Screw (Air Guide Cover)	914	691127	Screw (Rocker Arm Cover)
467	691008	Knob-Air Cleaner	929	695239	Screw (Choke Control Bracket)
474	696458	Alternator	929A	691003	Screw (Choke Control Bracket)
501	691185	Regulator	943	690589 •	Seal-O Ring (Oil Pump Cover)
505	691029	Nut (Governor Control Lever)	947	841546	Solenoid-Fuel
510	497606	Drive-Starter	965	499613	Cover-Oil Pump
513	692024	Clutch-Drive	967	273638	Filter-Pre Cleaner
523	691036	Dipstick	968	791242	Cover-Air Cleaner
524	691032 •	Seal-O Ring (Dipstick Tube)	975	791232	Bowl-Float
525	691037	Tube-Dipstick	977	499812	Gasket Set-Carburetor
526	691108	Screw (Regulator)	987	691000 Ø‡	Seal-Throttle Shaft
544	-----	Armature-Starter (Serviced by 691262 Starter Motor Only)	1005	791236	Fan-Flywheel
552	690552	Bushing-Governor Crank	1013	690954	Nipple-Oil Filter
552A	690553	Bushing-Governor Crank	1017	690770	Screen-Oil Pump
562	690311	Bolt (Governor Control Lever)	1019	693995	Kit-Label
573	691009	Plate-Back	1022	690971 *+	Gasket-Rocker Cover
601	691038	Clamp-Hose	1023	499599	Cover-Rocker Arm (Cylinder 1)
615	698290	Retainer-Governor Shaft	1023A	499600	Cover-Rocker Arm (Cylinder 2)
616	691045	Crank-Governor	1024	499054	Pump-Oil
617	691917	Seal-O Ring (Intake Manifold)	1026	690981	Rod-Push (Steel)
628	691108	Screw (Fuel Pump Bracket)	1026A	690982	Rod-Push (Aluminum)
633	690998 Ø‡	Seal-Choke/Throttle Shaft	1027	696854	Filter-Oil
635	66538	Boot-Sparkplug	1029	690972	Arm-Rocker
654	690958	Nut (Carburetor)	1035	691042	Shaft-Pump
668	691215	Spacer	1036	790626	Label-Emission
672	690234 Ø‡	Gasket-Carburetor Plate	1040	791237	Plate-Trim
691	690657 •	Seal-Governor Shaft	1051	691265	Ring-Retaining
695	693149	Screw (Ring Gear)	1054	280275	Cable-Tie
697	690372	Screw (Drive Cap)	1058	275475	Owner's Manual
703	691010	Clip	1070	690372	Screw (Flywheel Fan)
718	690959	Pin-Locating	1090	691293	Retainer-Brush
726	499612	Gear-Ring	1095	694013	Set-Valve Gasket
741	690980	Gear-Timing	1100	690973	Pivot-Rocker Arm
742	690328	Retainer-E Ring	1119	691183	Screw (Alternator)
750	696999	Screw (Oil Pump Cover)	1123	690987 Ø‡	Seal-O Ring (Solenoid Retainer)
783	693058	Gear-Pinion	1124	690988 Ø‡	Seal-O Ring (Fuel Transfer Tube)
788	691039	Bracket-Fuel Pump	1126	690991	Screw (Fuel Transfer Tube)
789	698330	Harness-Wiring	1127	695407	Screw (Float Bowl)
789A	696576	Harness-Wiring	1169	690990	Screw (Carburetor Cover Plate)
789B	790544	Harness-Wiring	1329	446877-0026	Replacement Engine (If original engine is equipped with a six pin wiring harness transfer to the replacement engine. Transfer Governor Spring to the replacement engine. Transfer oil sensor to the replacement engine.)
797	691029	Nut (Brush Retainer)	1330	273521	Repair Manual
797A	693167	Nut (Brush Retainer)			
798	697890	Screw (Rocker Arm)			
801	691283	Cap-Drive			
802	691286	Cap-End			
803	-----	Housing-Starter (Serviced by 691262 Starter Motor Only)			
842	691031 •	Seal-O Ring (Dipstick)			
847	499602	Assembly-Dipstick/Tube			
851	493880	Terminal-Sparkplug			
855	691011	Adapter-Air Cleaner			
865	691012	Cover-Air Guide (Cylinder 1)			

- Included in Engine Gasket Set, Key. No. 358
- Ø Included in Carburetor Overhaul Kit, Key. No. 121
- ‡ Included in Carburetor Gasket Set, Key. No. 977
- + Included in Valve Overhaul Kit, Key. No. 1095

NOTE: All component dimensions given in U.S. inches 1 inch = 25.4 mm