

**REPAIR PARTS MANUAL**  
**MODEL NO. 992901**  
**Lawn Tractor**

---



586504726

# HOW TO USE THIS MANUAL

This manual is designed to provide the customer with a means to identify the parts on his/her tractor when ordering repair parts. The illustrations may or may not represent the actual assemblies; therefore, it is not recommended to use this manual as a guide to assemble or disassemble the tractor. Some hardware and parts are drawn larger in order to more readily identify them.

Each tractor has its own model number.

The model number for your tractor can be found on the fender under the seat.

When ordering parts, always give the following information:

- Product - "Tractor"
- Model Number - "992901"
- Part Number
- Part Description

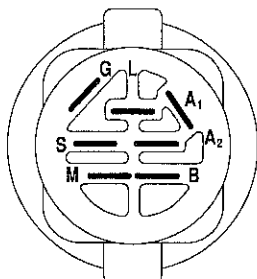
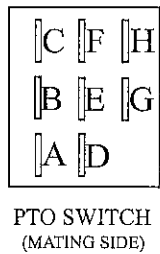
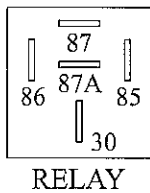
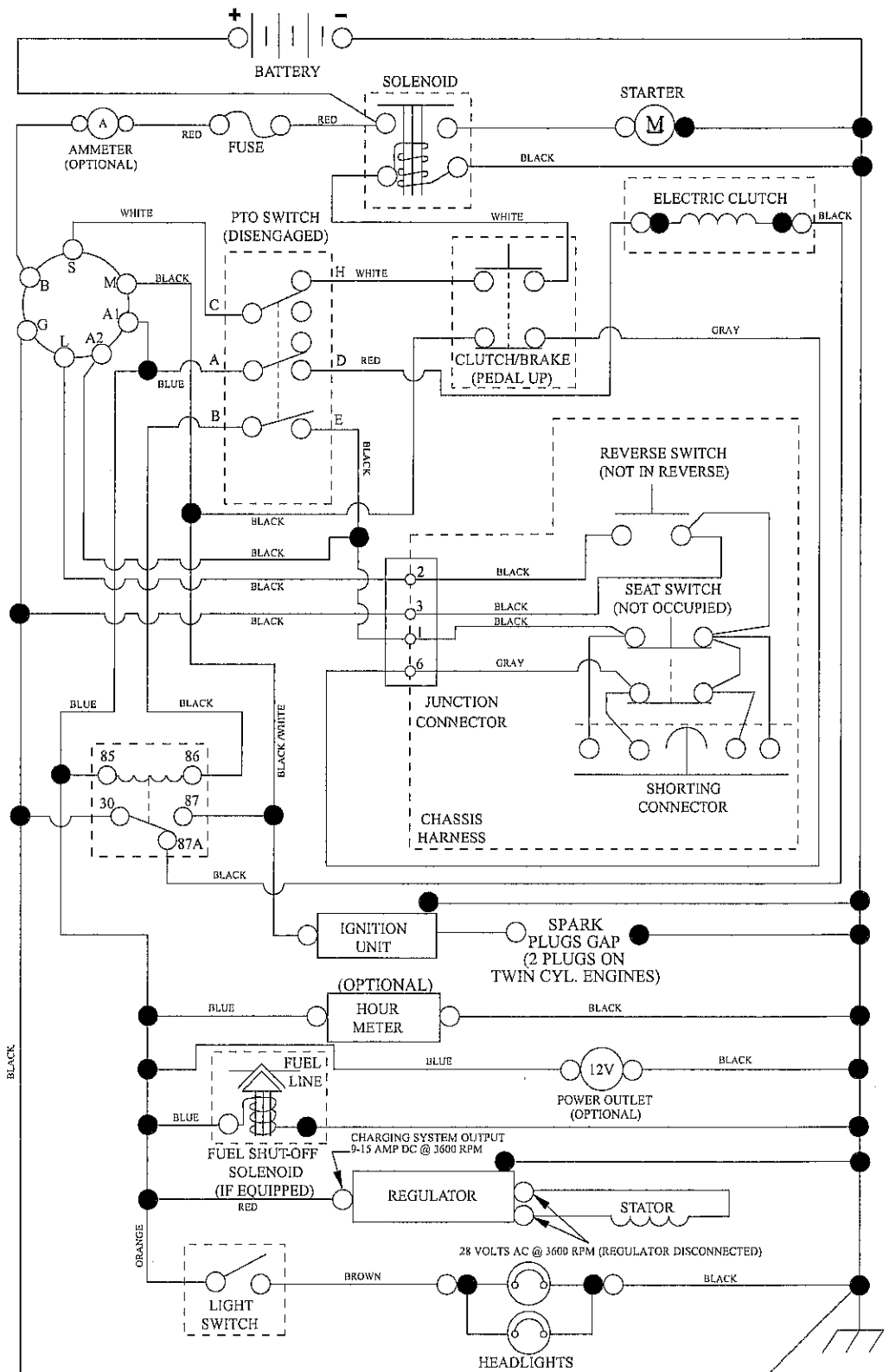
## TABLE OF CONTENTS

SCHEMATIC .....	3
ELECTRICAL.....	4-5
CHASSIS .....	6-7
DRIVE.....	8-9
ENGINE.....	10-11
STEERING .....	12-13
MOWER DECK.....	14-15
MOWER LIFT.....	16
SEAT .....	17
BAGGER.....	18
DECALS.....	19
TRANSAXLE BREAKDOWN .....	20-21
ENGINE BREAKDOWN.....	22-27
WARRANTY.....	BACK COVER

# TRACTOR- -MODEL NO. 917.992901

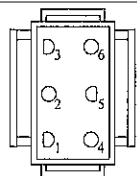
## SCHEMATIC

SCH13

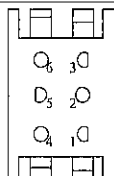


IGNITION SWITCH

POSITION	CIRCUIT	"MAKE"
OFF	M+G+A1	
RUN/OVERRIDE	B+A1	
RUN	B+A1	L+A2
START	B + S + A1	



CHASSIS HARNESS CONNECTOR  
(MATING SIDE)



DASH HARNESS CONNECTOR

WIRING INSULATED CLIPS  
NOTE: IF WIRING INSULATED CLIPS WERE REMOVED FOR SERVICING OF UNIT, THEY SHOULD BE RE-INSTALLED TO PROPERLY SECURE YOUR WIRING.

● NON-REMOVABLE CONNECTIONS

○ REMOVABLE CONNECTIONS



# TRACTOR- -MODEL NO. 917.992901

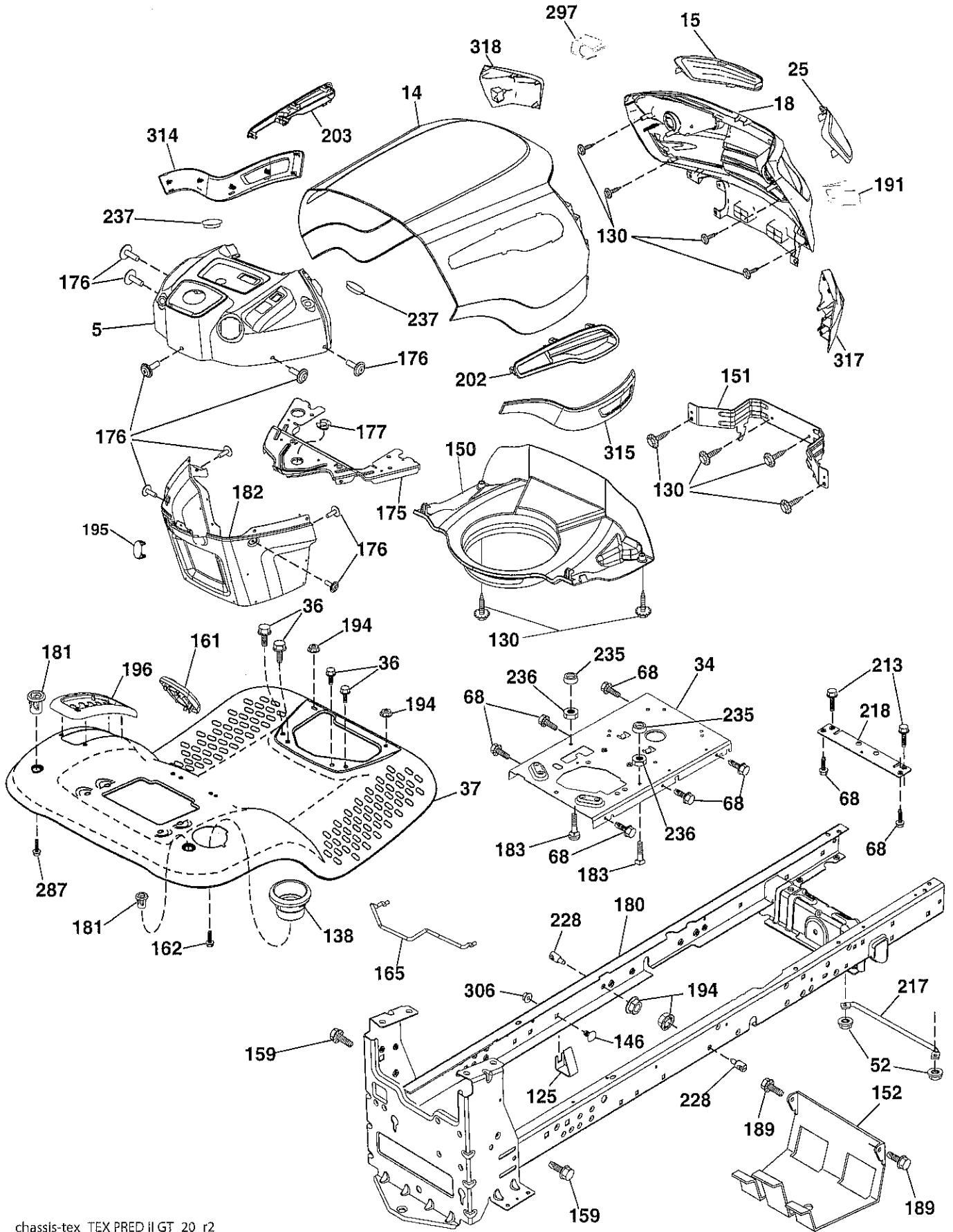
## ELECTRICAL

KEY NO.	PART NO.	DESCRIPTION
1	163465	Battery
2	74760412	Bolt Hex Hd 1/4-20 unc x 3/4
8	186491	Box Battery
16	176138	Switch Interlock Push-In
21	400252	Harness Socket Light w/4152J
22	4152J	Harness Light w/4152J
24	400253	Cable Btry.
25	412895	Cable Starter
26	175158	Fuse
27	73510400	Nut Keps Hex 1/4-20 unc
28	145491	Cable, Ground
29	401545	Switch, Seat
30	193350	Switch, Ign
33	411934	Key/Chain
34	110712X	Switch Light/Reset
40	194276	Harness Ign. Dash
41	17720408	Screw Thd Cut 1/4-20 x 1/2
42	131563	Cover, Terminal
43	192507	Solenoid
46	401763	Gauge SRVCMNDR HRMTR
50	174652	Switch PTO
55	17060512	Screw Thdrol 5/16-18 x 3/4 TYTT
71	581022801	Harness Ign. Chassis/Light
79	175242	Bulbholder Asm. Incan Descent
81	409615	Relay Harness Sealed
90	435395	Cover Terminal Battery
91	190270	Strap Btry.
99	17670412	Screw Hexwsh Thdrol 1/4-20 x 3/4
100	19091416	Washer 9/32 x 7/8 16 Ga.
102	404454	Harness Pigtail Tex ROS Tufftorq
105	407568	Switch Reverse

**NOTE:** All component dimensions given in U.S. inches.  
1 inch = 25.4 mm.

# TRACTOR- -MODEL NO. 917.992901

## CHASSIS AND ENCLOSURES



chassis-tex\_TEX PRED II GT\_20\_r2

# TRACTOR- -MODEL NO. 917.992901

## CHASSIS AND ENCLOSURES

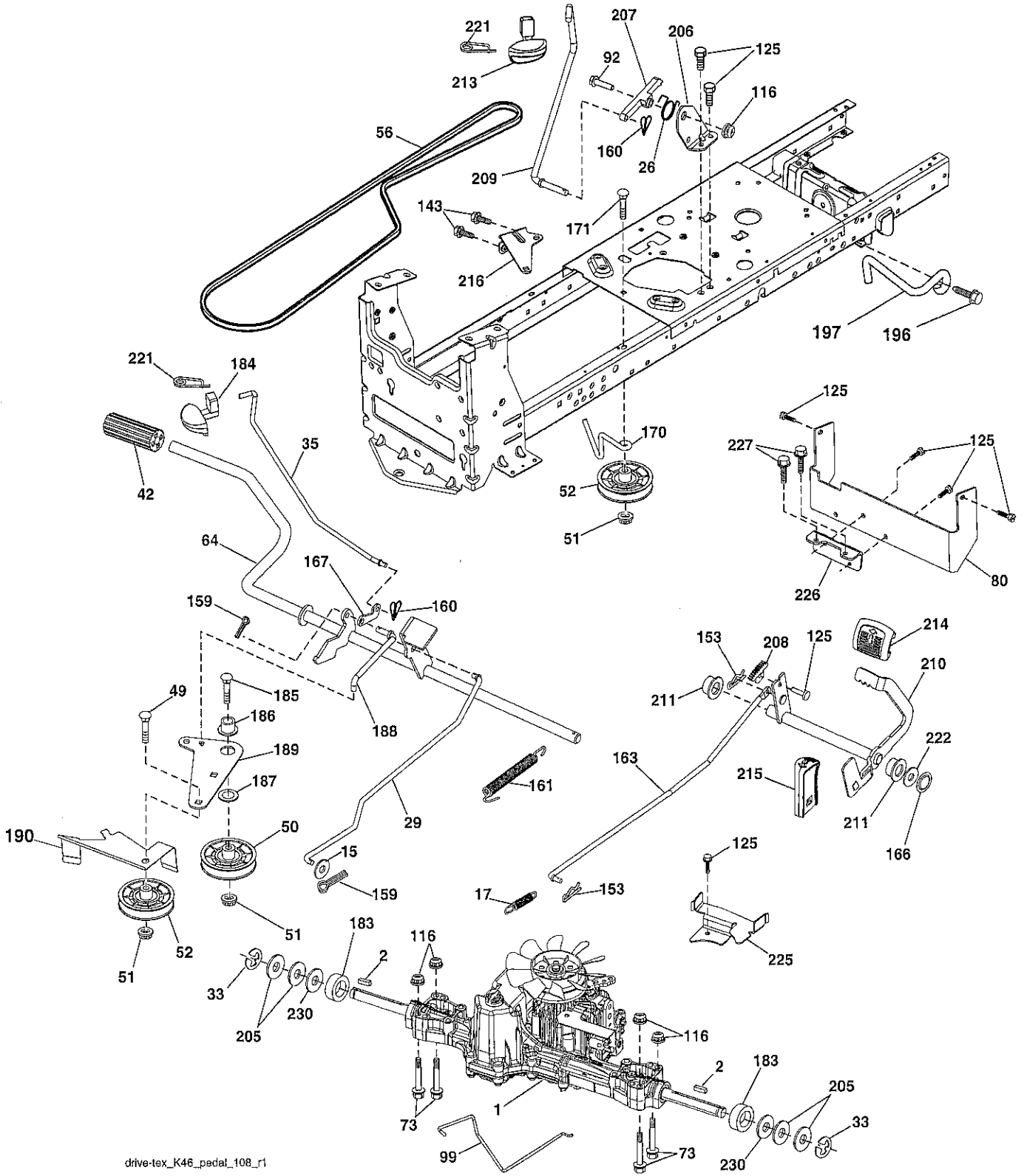
KEY NO.	PART NO.	DESCRIPTION
5	424927X428	Dash
14	421154X615	Hood
15	421493X599	Lens LH
18	441721X428	Grille Asm
25	421494X599	Lens RH
34	580910801	Plate Engine
36	17060512	Screw 5/16-18 x 3/4
37	414878X615	Fender
52	73680500	Nut Crown Lock 5/16-18
68	17490508	Screw Thdrol 5/16-18 x 1/2
125	581684801	Clip Fuel Line
130	416358	Screw # 10 x .750 BOS Thread
138	193224X428	Cupholder
146	581857901	Bolt
150	584862901	Duct Heat Hood
151	445494	Bracket Pivot
152	199535	Shield Browning/Debris
159	17000612	Screw 3/8-16 x 3/4
161	193229X428	Window Fuel
162	142432	Screw Hex Wsh Hi-Lo 1/4 x 1/2
165	196826	Support Tank Rear
175	196304	Crossmember
176	400776	Screw 10-24 x 5/8 Wshd Qdrx
177	195227	Bushing Steering
180	195457	Chassis
181	193102X428	Bushing Mtg. Fender Crgo.
182	406859	Dash Lower
183	74520520	Bolt 5/16-18 x 1-1/4

KEY NO.	PART NO.	DESCRIPTION
189	17000512	Screw 5/16 - 18 x 3/4
191	425407	Insert Reflective Lens RH
194	73900500	Nut Lock Hex Flange 5/16-18
195	401556X428	Plug Hole Dash 12V Adapter
196	414579	Console Asm. Deck Lift
202	584143901	Vent Side Hood RH
203	584144101	Vent Side Hood LH
213	74760512	Bolt hex HD 5/16-18 unc x 3/4
217	409167	Rod Pivot Chassis
218	196395	X piece hood stop
228	195161	Stud Fastener
235	406129	Spacer Fender
236	73930500	Nut Center Lock 5/16-18
237	403704	Plug Mount Cargo
287	17600406	Screw Hex Washead 1/4-20 x 3/8
297	425406	Insert Reflective Lens LH
306	73900600	Nut Lock
314	580614601	Trim SD LH
315	580614501	Trim SD RH
317	421257X615	Bumper RH
318	421258X615	Bumper LH

**NOTE:** All component dimensions given in U.S. inches.  
1 inch = 25.4 mm.

# TRACTOR- -MODEL NO. 917.992901

## DRIVE



drive-tex\_K46\_pedal\_108\_r1



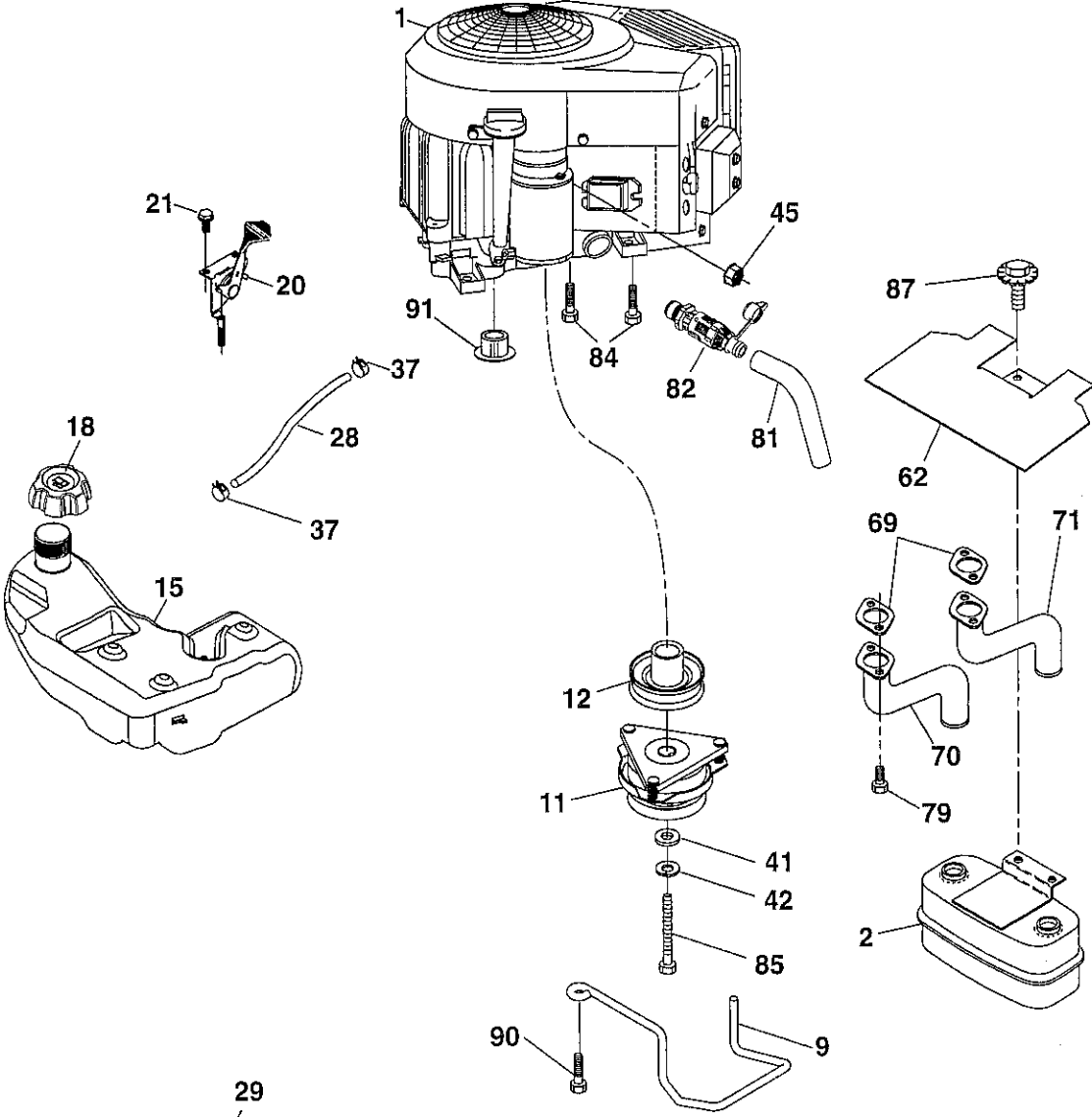
# TRACTOR- -MODEL NO. 917.992901

## DRIVE

KEY NO.	PART NO.	DESCRIPTION	KEY NO.	PART NO.	DESCRIPTION
1	- - - -	Transaxle, TUFFTORQ K46 BT (426120) (See transaxle breakdown)	171	72110616	Bolt 3/8-16 unc x 2
2	123583X	Key	183	137057	Spacer Split
15	19131316	Washer 13/32 x 13/16 x 16 Ga.	184	196439X667	Handle Parking Brake
17	413678	Spring, Brake	185	72110622	Bolt Rdhd Sqnk 3/8-16 x 2-1/2
26	199679	Spring Return Cruise	186	194321	Spacer Retainer
29	403806	Rod, Brake	187	19133210	Washer
33	12000001	Ring E	188	194323	Link Clutch Ground Drive
35	583864501	Rod, Brake, Park	189	194317	Bellcrank Ground Drive
42	8883R	Cover, Foot Pedal	190	194318	Keeper Bellcrank Ground Drive
49	72110614	Bolt	196	17000616	Screw 3/8-16 x 1
50	194327	Pulley Idler Flat	197	195804	Link Clutch Anti-Rotation
51	73900600	Lock Nut 3/8-16	205	121748X	Washer
52	194326	Idler V-Groove	206	448596	Bracket Mount Latch Cruise
56	130969	V-Belt, Drive	207	197868	Latch Control Cruise
64	197865	Shaft Asm. Pedal Brake Control	208	197869	Gear Sector Control Cruise
73	74490540	Bolt 5/16-18 x 4.5 Gr. 5	209	199592	Rod Control Cruise
80	440619	Strap Torque	210	400980	Rocker Asm. Pedal Control
92	74760520	Bolt Fin Hex 5/16-18 unc x 1.25	211	120183X	Bearing Nylon
99	415742	Rod Spring Bypass	213	196441X428	Knob Control Cruise
116	73900500	Nut Lock Hex Flange 5/16-18	214	421263	Pedal Forward
125	17000512	Screw 5/16-18 x 3/4	215	197301X428	Pedal Reverse
143	17490508	Screw 5/16-18 x 1/2	216	196131	Bracket Pulley Idler
153	4497H	Retainer Spring	221	403187	Retainer Spring Clip Handle
159	76020412	Pin Cotter 1/8 x 3/4	222	79212010	Washer 21/32 x 1-1/4 x 10 Ga.
160	169484	Retainer Clip	225	403319	Keeper Belt Trans.
161	105709X	Spring, Return, Clutch	226	401564	Bracket Mount Torque
163	448275	Rod Pedal Control	227	17490512	Screw 5/16-18 x 3/4
166	429164	Nut Push .625	230	188967	Washer
167	405257	Latch Brake Parking			
170	194322	Keeper Belt Centerspan			

**NOTE:** All component dimensions given in U.S. inches  
1 inch = 25.4 mm

ENGINE



**SPARK ARRESTER KIT**

engine-tex\_bs-2cyl\_94

# TRACTOR- -MODEL NO. 917.992901

## ENGINE

KEY NO.	PART NO.	DESCRIPTION
1	— — — —	Engine B&S Model No. 44R677-0007-B1 (585706701)(See engine breakdown)
2	584908001	Muffler
9	194320	Keeper Belt Engine
11	400008	Clutch Electric
12	405097	Pulley Engine
15	438080	Tank Fuel
18	430214	Cap Fuel
20	421473X428	Control Throttle
21	416358	Screw 10 x .750 BOS Thread
28	8543R	Fuel Line
29	137180	Spark Arrester Kit
37	123487X	Clamp Hose
41	126197X	Washer 1-1/2 OD x 15/32 ID x .250
42	10040700	Washer Lock 7/16
45	73510400	Nut Keps Hex 1/4-20 unc
62	434017	Shield Heat Muffler
69	165391	Gasket
70	581881101	Exhaust Tube LH
71	581881001	Exhaust Tube RH
79	183906	Screw 5/16-18 x .75
81	148456	Tube Drain Oil Easy
82	428287	Valve Oil Drain
84	17060620	Screw 3/8-16 x 1-1/4
85	173937	Bolt Hex 7/16-20 x 4 x Gr. 5-1.5
87	171877	Bolt 5/16-18 unc x 3/4 w/Sems
90	17000616	Screw 3/8-16 x 1.0
91	187495	Bushing

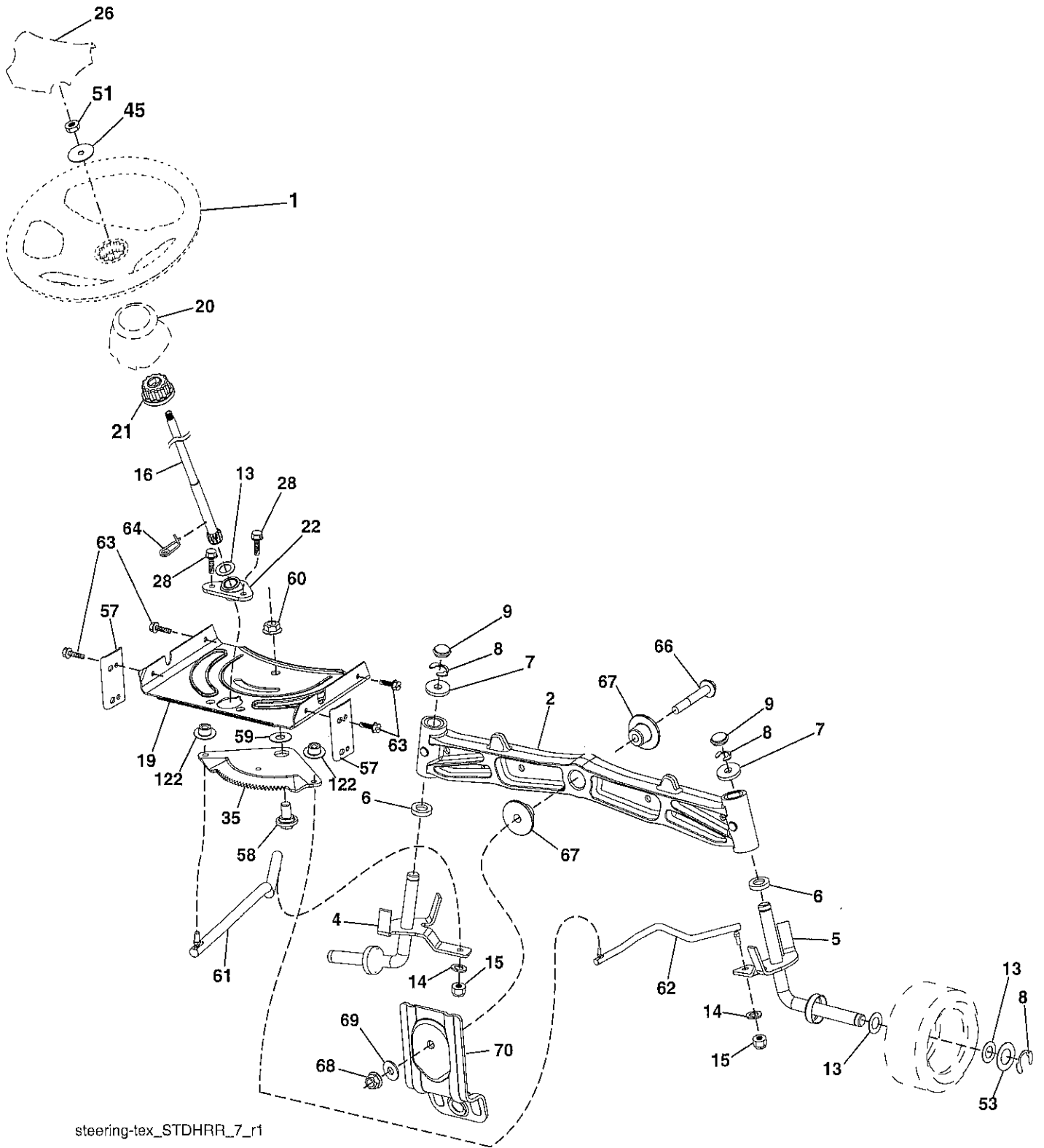
**NOTE:** All component dimensions given in U.S. inches  
1 inch = 25.4 mm

### Engine Power Rating Information

The gross power rating for individual gas engine models is labeled in accordance with SAE (Society of Automotive Engineers) code J1940 (Small Engine Power & Torque Rating Procedure), and rating performance has been obtained and corrected in accordance with SAE J1995 (Revision 2002-05). Torque values are derived at 3060 RPM; horsepower values are derived at 3600 RPM. Actual gross engine power will be lower and is affected by, among other things, ambient operating conditions and engine-to-engine variability. Given both the wide array of products on which engines are placed and the variety of environmental issues applicable to operating the equipment, the gas engine will not develop the rated gross power when used in a given piece of power equipment (actual "on-site" or net power). This difference is due to a variety of factors including, but not limited to, accessories (air cleaner, exhaust, charging, cooling, carburetor, fuel pump, etc.), application limitations, ambient operating conditions (temperature, humidity, altitude), and engine-to-engine variability. Due to manufacturing and capacity limitations, Briggs & Stratton may substitute an engine of higher rated power for this Series engine.

# TRACTOR- -MODEL NO. 917.992901

## STEERING ASSEMBLY



steering-tex\_STDHRR\_7\_r1

# TRACTOR- -MODEL NO. 917.992901

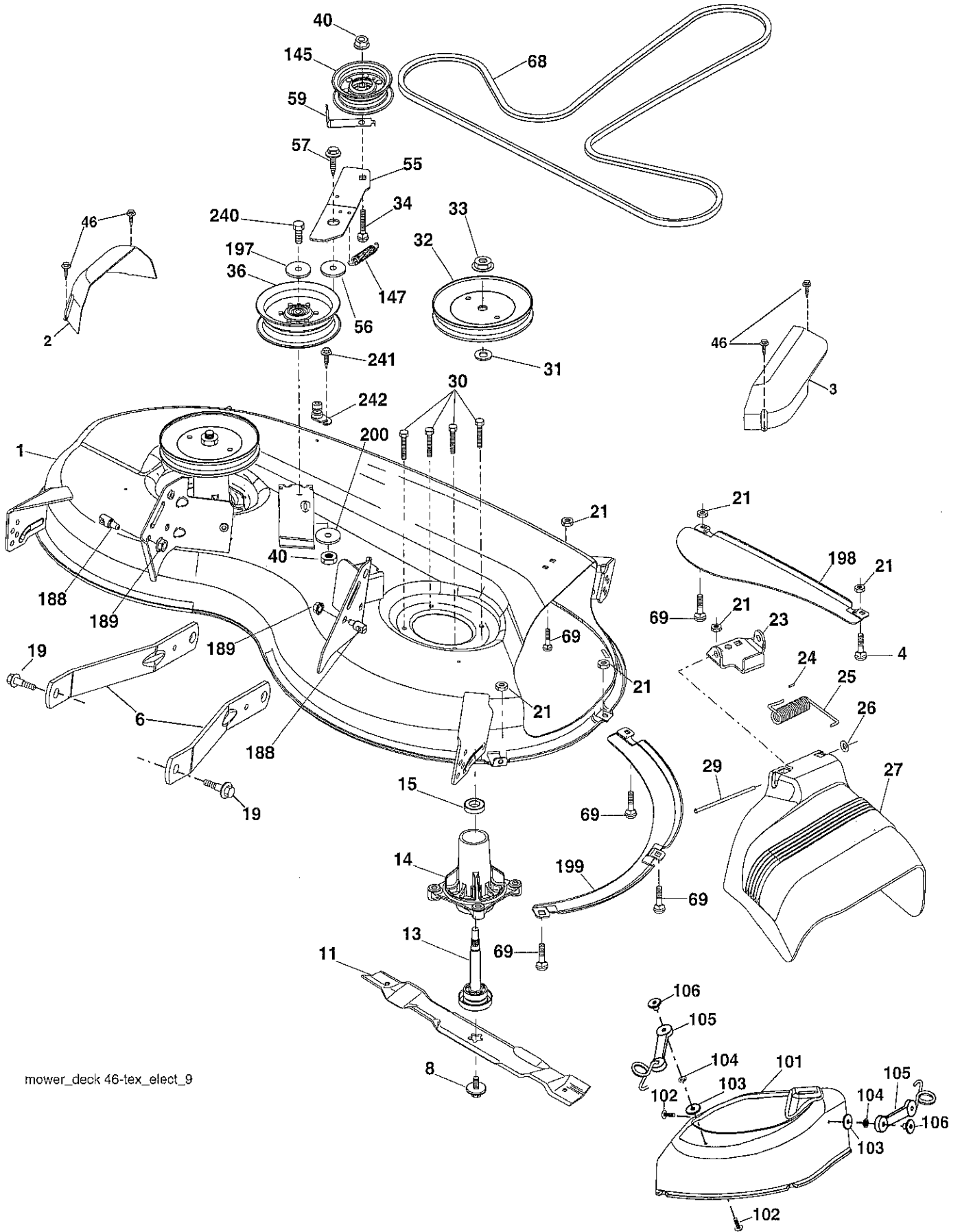
## STEERING ASSEMBLY

KEY NO.	PART NO.	DESCRIPTION
1	414851X428	Wheel, Steering
2	195968	Axle Asm., Front
4	403087	Spindle Asm., LH
5	403088	Spindle Asm., RH
6	6266H	Washer Thrust 0.75 x 1.23
7	121748X	Washer 25/32 x 1-5/8 x 16 Ga.
8	12000029	Ring, Clip #T5304-75
9	184946X667	Cap, Spindle
13	121749X	Washer 25/32 x 1-1/4 x 16 Ga.
14	10040600	Washer Lock 3/8
15	73540600	Nut, Crown Lock 3/8-24 unf
16	194746	Shaft Steering
19	194729	Plate Steering
20	199676X428	Boot, Steering
21	186737	Adapter, Wheel Steering
22	420537	Steering Support Lower
26	414852X428	Insert, Wheel Steering
28	17000612	Screw 3/8-16 x 3/4
35	194732	Gear, Sector Plate
45	19183812	Washer 9/16 x 2-3/8 x 12 Ga.
51	73940800	Nut Hex 1/2-20 unf
53	188967	Washer Hardened .793 x 1.637 x .060
57	407465	Bracket Upstop
58	194747	Bolt Shoulder Sector Pivot CFM
59	194748	Washer Thrust Sector Steering
60	73971000	Nut Flange Lock 5/8-11
61	194740	Draglink, LH
62	194741	Draglink, RH
63	17000512	Screw 5/16-18 x 3/4
64	199849	Retainer Clip Spring Steering
66	71020748	Bolt Hex Fghd 7/16-14 x 3 Serr
67	194737	Bushing PM Front Axle
68	73900700	Nut Lock Flange 7/16-14 Gr. 5
69	199162	Washer 1.5 x .505 x .118
70	196197	Bracket Deck Susp. Front
122	444962	Cap Gear Sector

**NOTE:** All component dimensions given in U.S. inches.  
1 inch = 25.4 mm.

# TRACTOR- -MODEL NO. 917.992901

## MOWER



mower\_deck 46-tex\_elect\_9

# TRACTOR- -MODEL NO. 917.992901

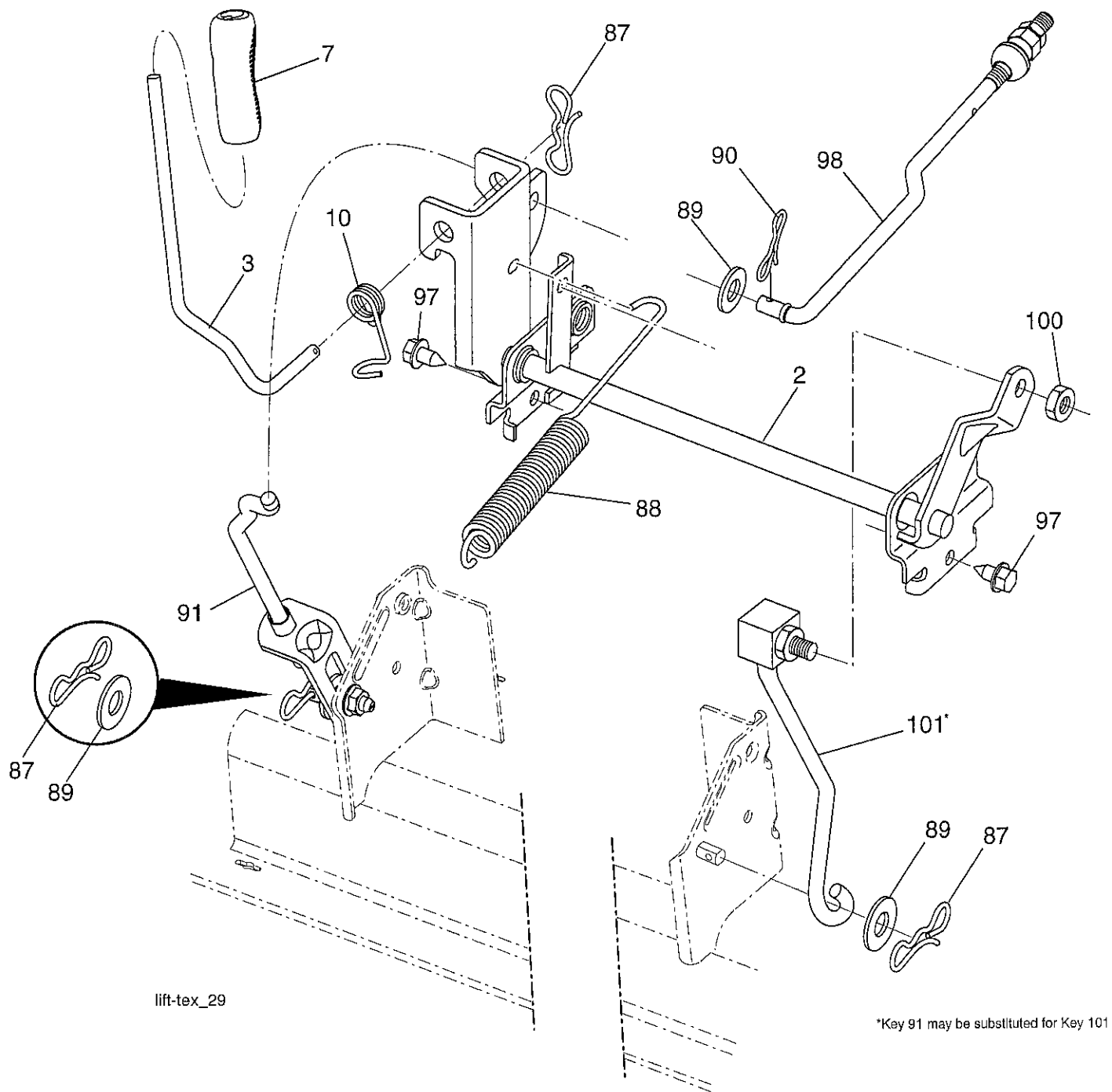
## MOWER

KEY NO.	PART NO.	DESCRIPTION	KEY NO.	PART NO.	DESCRIPTION
1	448126X615	Mower Housing	101	405454	Cover Mulch 46"
2	405507	Cover Mandrel LH	102	71081010	Screw Pan HD Phillip 10-24 x 5/8
3	405506	Cover Mandrel RH	103	10071000	Washer Lock #10
4	74760512	Bolt Hex Hd 5/16-18 unc x 3/4	104	19061216	Washer #10
6	195186	Arm Suspension	105	160793	Latch Asm.
8	193003	Bolt/Washer Asm. 7/16-20 unf	106	2029J	Nut Weld .327/304 #10-24
11	403107	Blade Mulching	116	4898H	Bolt, Shoulder
13	192872	Shaft Assembly, Mandrel	117	188606	Wheel, Gauge
14	187281	Housing, Mandrel	119	19121414	Washer 13/32 x 7/8 x 14 Ga.
15	110485X	Bearing, Ball, Mandrel	145	193197	Pulley Idler
19	196539	Bolt, Shoulder	147	197251	Spring Return
21	73680500	Nut	188	195161	Stud Fastener
23	192557	Bracket, Deflector	189	73900500	Nut Lock Hex Flange
24	105304X	Cap, Sleeve	197	19131312	Washer 13/32 x 13/16 x 12 Ga.
25	197026	Spring, Torsion, Deflector	198	403149	Baffle Center Front
26	110452X	Nut, Push	199	403150	Baffle Front RH
27	405357	Shield, Deflector	200	413524	Washer 13/32 x 1 x 1/2 x 11 Ga.
29	131491	Rod, Hinge	240	74520636	Bolt Fin. Hex 3/8-16 x 2-1/4 Gr. 5
30	173984	Screw Thdrol. Rolling Wsh. Hd.	241	152927	Screw
31	187690	Washer, Spacer	242	415598	Port Washout
32	197473	Pulley, Mandrel	--	192870	Mandrel Assembly (Includes housing(Key #14), shaft assembly (Key #13), and bearing only (Key #15) - pulley/nut/washer and blade bolt/washers not included)
33	400234	Nut, Toplock, Flanged	--	584233201	Replacement Mower, Complete
34	72110612	Bolt Carr. Sh. 3/8-16 x 1-1/2 Gr. 5			
36	197379	Pulley, Idler, Flat			
40	73900600	Nut, Lock Flg. 3/8-16 unc			
46	137729	Screw			
55	197249	Arm, Idler			
56	199092	Spacer, Retainer			
57	17000616	Screw Hex Wsh. Thd. 3/8-16 x 1			
59	141043	Guard TUV Idler			
68	405143	V-Belt			
69	72140505	Bolt			

**NOTE:** All component dimensions given in U.S. inches  
1 inch = 25.4 mm

# TRACTOR- -MODEL NO. 917.992901

## MOWER LIFT



lift-tex\_29

\*Key 91 may be substituted for Key 101

KEY NO.	PART NO.	DESCRIPTION
2	422027	Shaft Asm., Lift
3	195231	Lever Asm., Lift RH
7	445060X428	Grip, Lever
10	196314	Spring Torsion
87	194209	Pin Cotter 7/16 Bow Tie Lock
88	410710	Spring Lift Assist
89	19191912	Washer Clear Zinc
90	194208	Pin Cotter 5/16 Bow Tie Lock
91	195181	Link Lift Susp Mower Rear

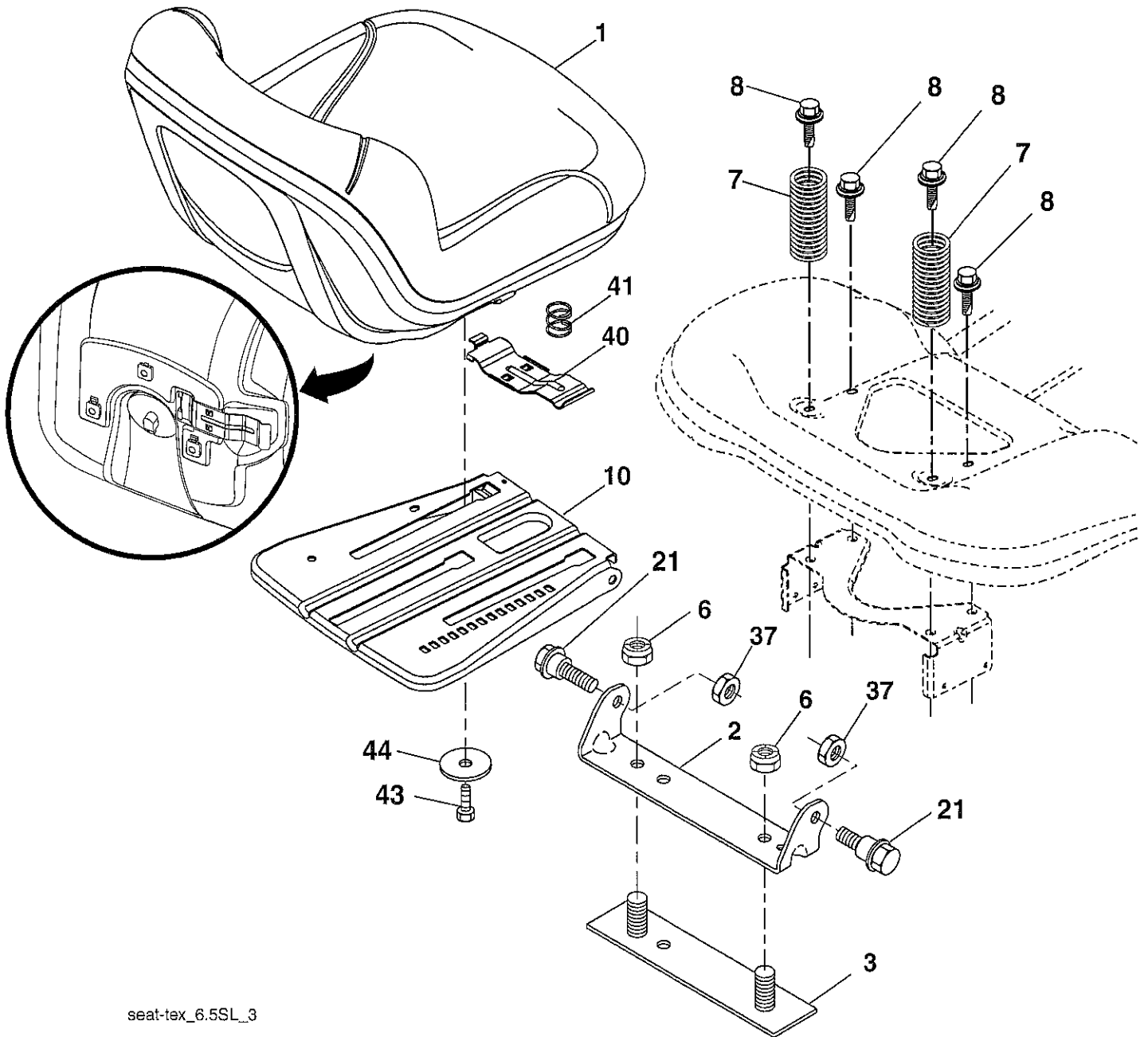
KEY NO.	PART NO.	DESCRIPTION
97	17000612	Screw 3/8-16 x .75
98	195270	Link Lift Susp. Front Mower
100	73930600	Nut Centerlock 3/8-16 unc
101	407003	Link Asm Lift Fxd

**NOTE:** All component dimensions given in U.S. inches  
1 inch = 25.4 mm



# TRACTOR- -MODEL NO. 917.992901

## SEAT ASSEMBLY



seat-tex\_6.5SL\_3

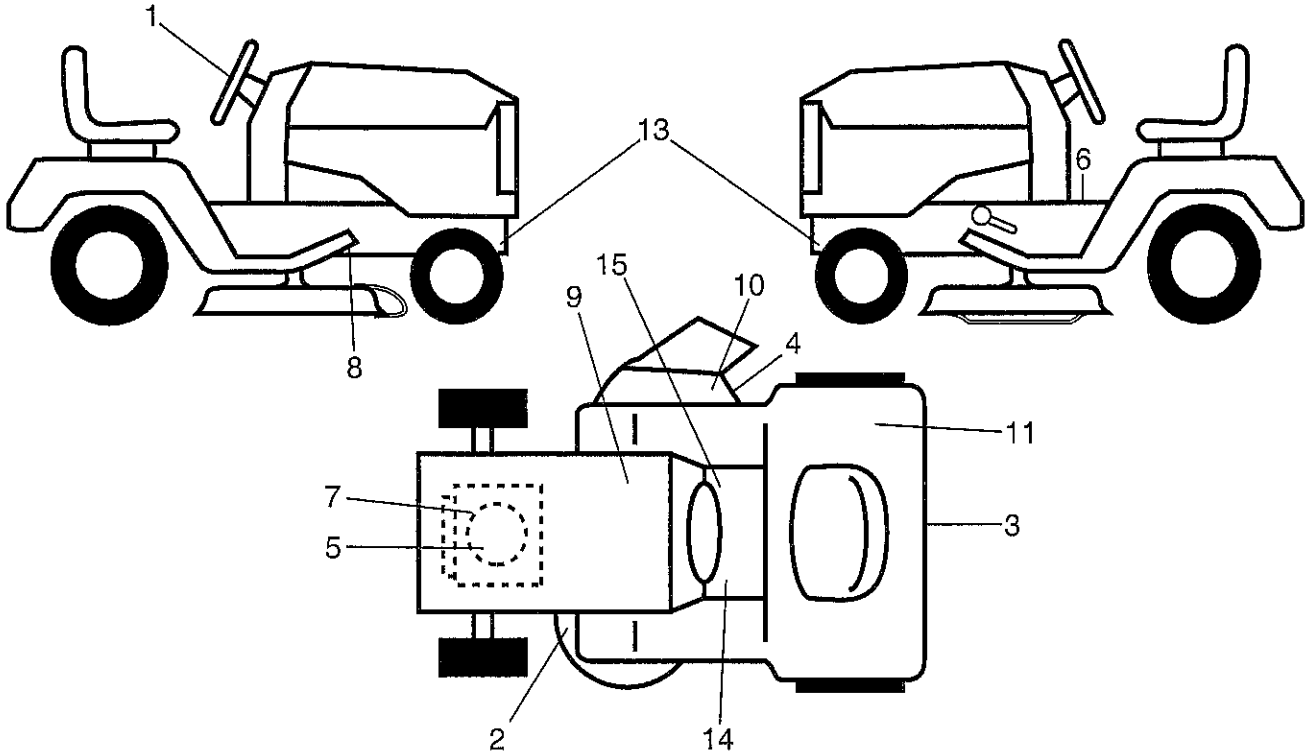
KEY NO.	PART NO.	DESCRIPTION
1	423645	Seat
2	180166	Bracket Pivot Fender
3	140675	Strap, Asm Fender
6	73800600	Nut, Lock W/Ins. 3/8-16 unc
7	124181X	Spring, Seat Cprsn
8	171877	Bolt 5/16-18 unc x 3/4 w/Sems
10	196977	Pan, Seat
21	171852	Bolt, Shoulder 5/16-18
37	73800500	Nut, Lock 5/16-18 unc

KEY NO.	PART NO.	DESCRIPTION
40	197661	Handle Slide Seat
41	198200	Spring Latch Seat
43	74760612	Bolt 3/8-16 x 3/4
44	19133812	Washer 13/32 x 2-3/8 x 12 Ga.

**NOTE:** All component dimensions given in U.S. inches.  
1 inch = 25.4 mm

# TRACTOR- -MODEL NO. 917.992901

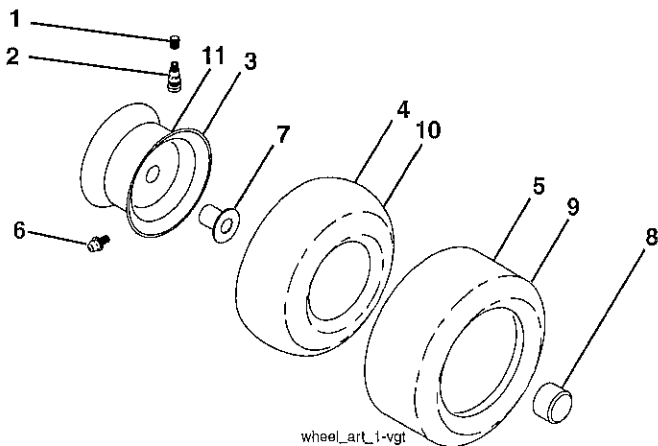
## DECALS



KEY NO.	PART NO.	DESCRIPTION
1	439525	Decal, Steering
2	581580001	Decal, V-Belt SCH.
3	441121	Decal, Fender
4	581579201	Decal, Deflector Warning Cuttfinger SYM
5	581901301	Decal, Engine HP
6	581578101	Decal, Fender Warning
7	581579701	Decal, Warning Engine
8	421534	Decal, V-Belt Schematic Drive
9	145005	Decal, Battery Warning
10	581579101	Decal, Cuttfinger CE
11	581724101	Decal, Fender

KEY NO.	PART NO.	DESCRIPTION
13	581579601	Decal, Chassis Hot Muffler
14	581724001	Decal, Brake/Clutch Symbol
15	581578001	Decal, Saddle Brake Parking
--	581724801	Decal, Bypass
--	581724601	Decal, Drawbar Load Limit
--	193226X428	Pad, Footrest LH
--	400981X428	Pad, Footrest
--	586504540	Manual, Oper (Euro)
--	586504750	Manual, Oper (Scan)
--	586504720	Manual, Oper (Ebloc)
--	586504730	Manual, Oper (Baltic)
--	586504726	Manual, Parts

## WHEELS & TIRES



KEY NO.	PART NO.	DESCRIPTION
1	59192	Cap, Valve, Tire
2	65139	Stem, Valve
3	106732X613	Rim Assembly, Front
4	59904	Tube, Front
5	106222X	Tire, Front 15 x 6-6
6	278H	Fitting, Grease
7	9040H	Bearing, Flange
8	104757X428	Cap, Axle
9	138468	Tire, Rear 20 x 8-8
10	7152J	Tube, Rear
11	106108X613	Rim Assembly, Rear
--	144334	Sealant, Tire (10 oz. Tube)

**NOTE:** All component dimensions given in U.S. inches  
1 inch = 25.4 mm

---

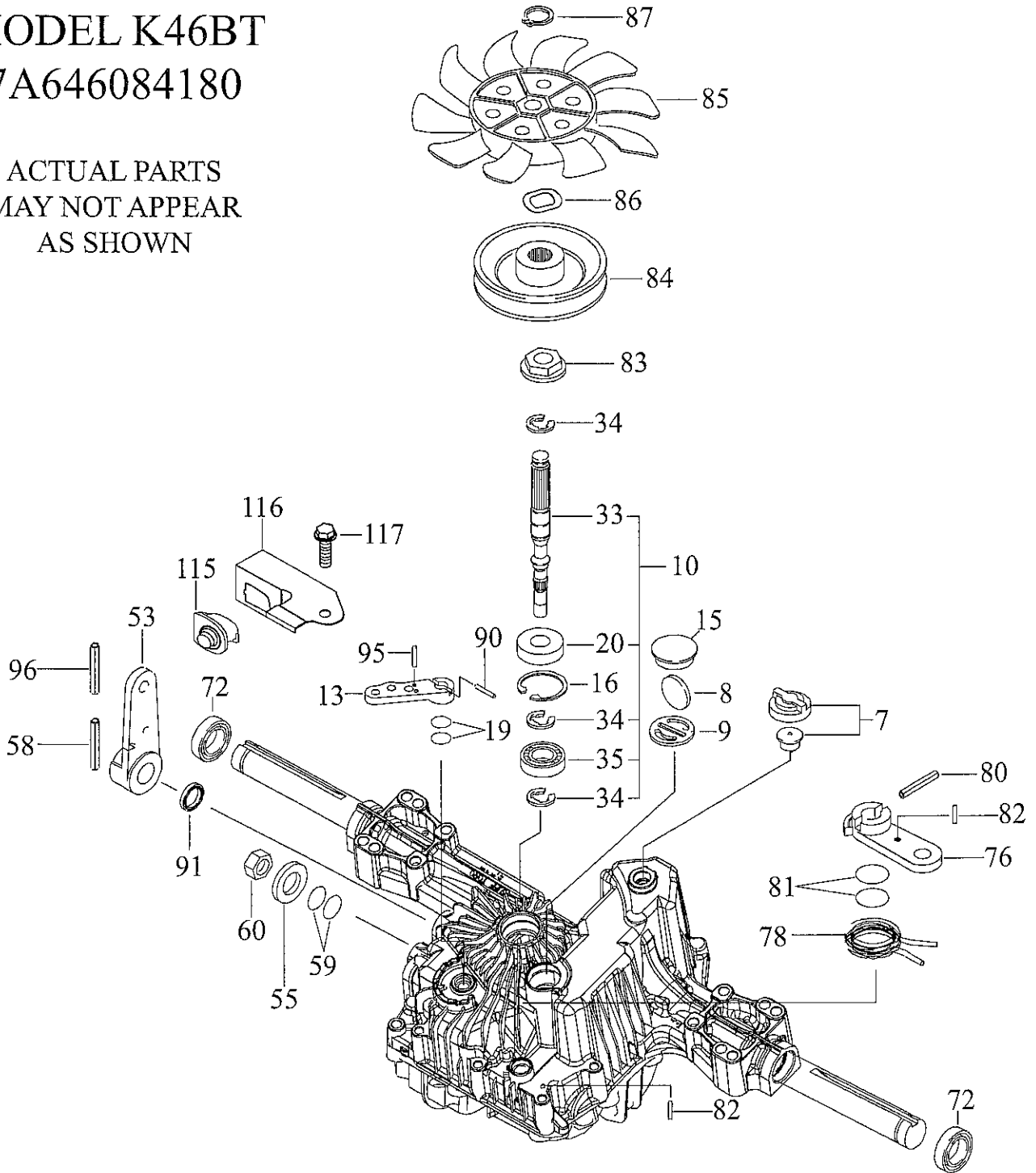
# SERVICE NOTES

---

TRACTOR- -MODEL NO. 917.992901  
TUFFTORQ TRANSAXLE - MODEL NUMBER K46BT

MODEL K46BT  
7A646084180

ACTUAL PARTS  
MAY NOT APPEAR  
AS SHOWN



**TRACTOR- -MODEL NO. 917.992901**  
**TUFFTORQ TRANSAXLE - MODEL NUMBER K46BT**

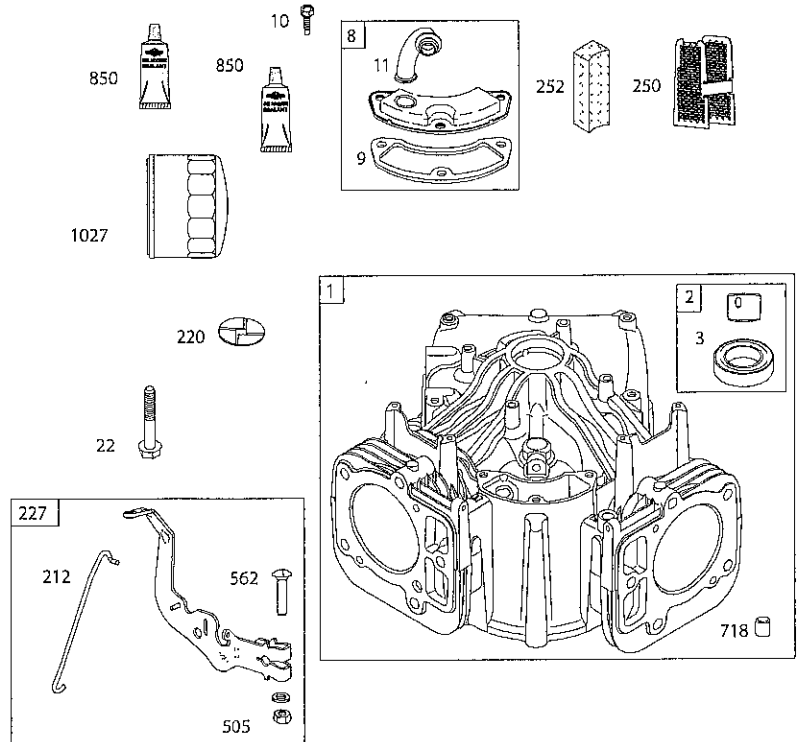
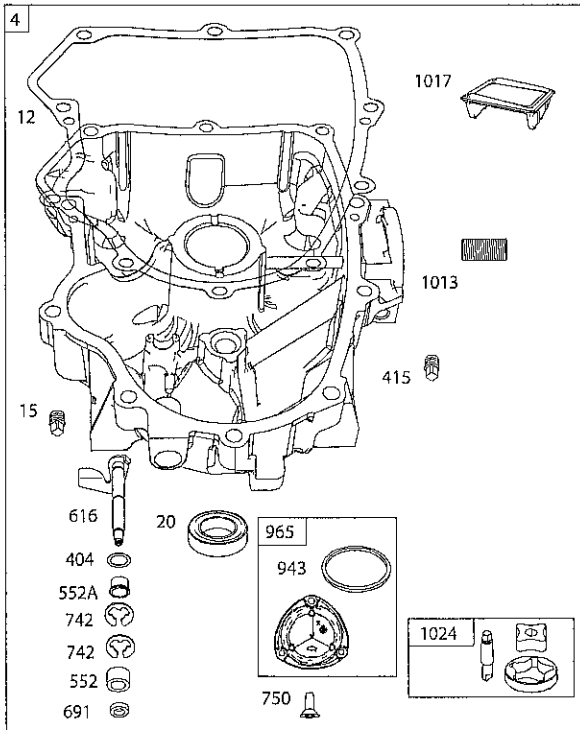
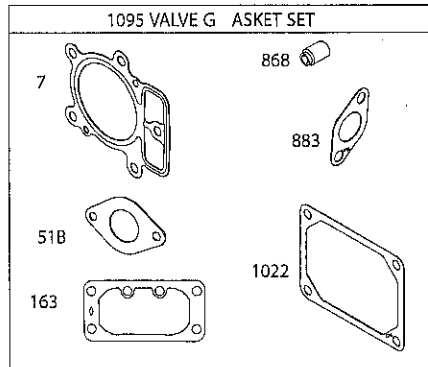
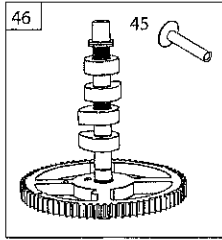
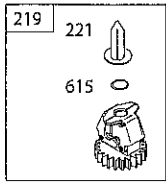
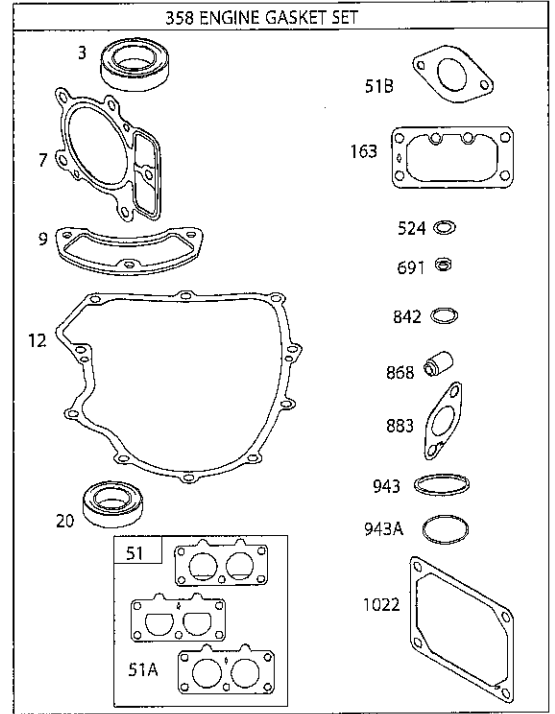
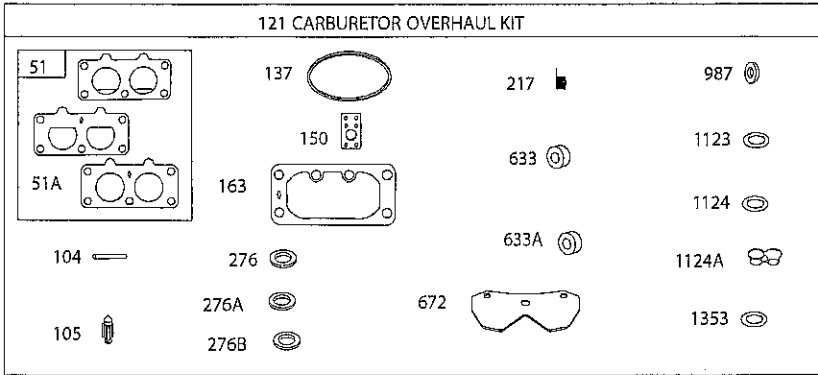
<b>KEY NO.</b>	<b>PART NO.</b>	<b>DESCRIPTION</b>
7	414395	Vent Valve 15
8	414396	Magnet
9	414397	Magnet Holder
10	415923	Pump Shaft/bearing Kit
13	414398	Bypass Lever
15	414399	Sealing Cap 30
16	414400	Snap Ring C 35
19	414401	O-ring 1a P10a
20	414402	Seal Tc 153507
33	414403	Pump Shaft (Standard)
34	414404	E-ring 15
35	414405	Bearing 6202c3
53	414431	Control Lever F
55	415924	Washer 12
58	415925	Roll Pin 6 * 40
59	415926	O-ring 1a P14
60	415927	Nut 12
72	414407	Seal 19 * 32 * 8
76	414408	Brake Lever
78	414409	Brake Return Spring
80	414410	Spring Pin 5 * 32
81	414411	O-ring 1a P12
82	414412	Spring Pin 4 * 16
83	414413	Spine Collar
84	414414	Pulley L
85	414415	Fan, Black
86	414416	Wave Washer
87	414417	Snap Ring
90	414418	Spring Pin 3.0a * 20
91	414419	Oil Seal 16 * 22 *.03
95	414850	Spring Pin 3.0a*16
96	414420	Roll Pin 3.5 * 40
115	415928	Switch 6440-11 Delta
116	415929	Switch Bracket
117	415930	Tapping Screw 8 * 20

**NOTE:** All component dimensions given in U.S. inches.  
1 inch = 25.4 mm

# TRACTOR- -MODEL NO. 917.992901

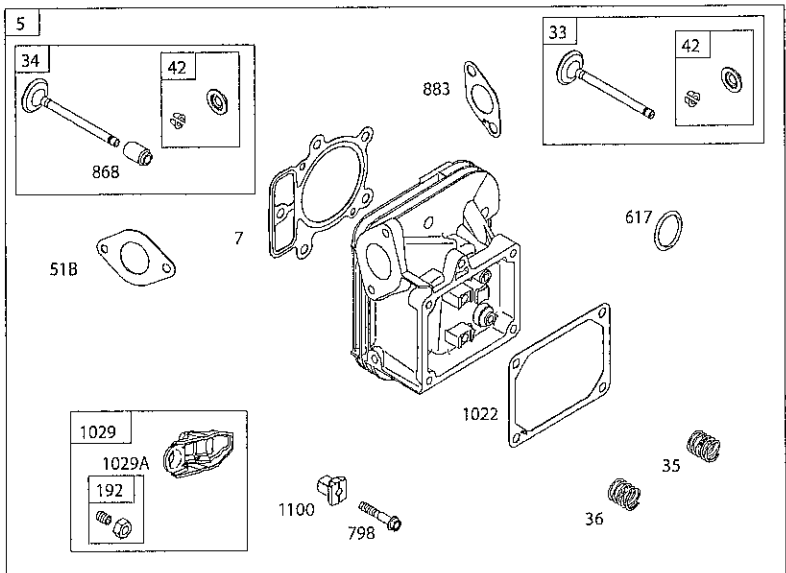
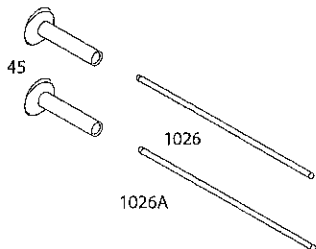
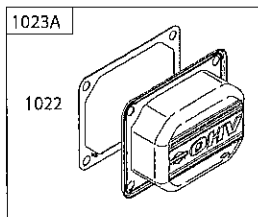
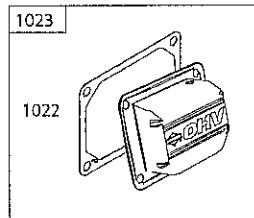
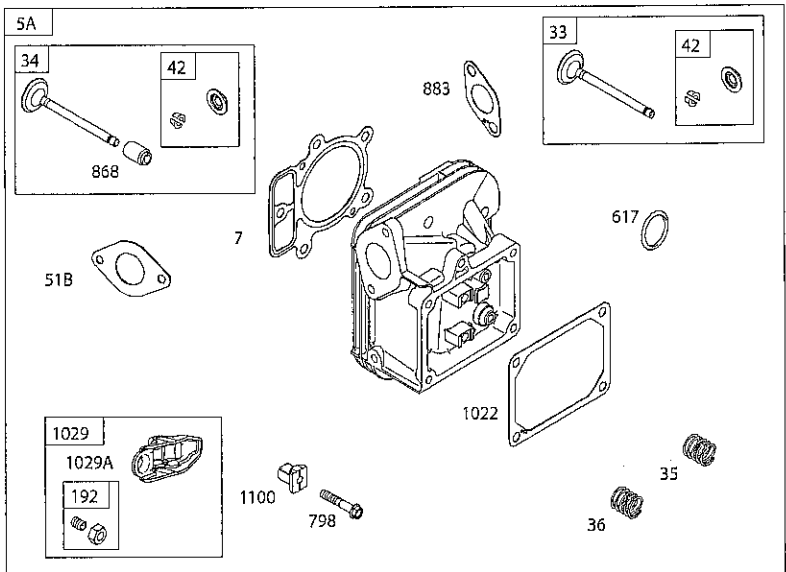
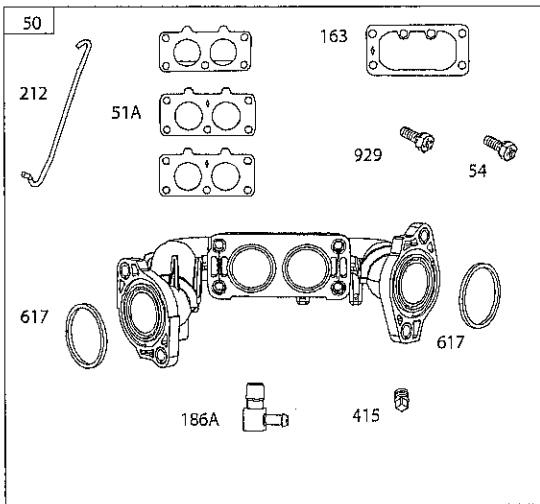
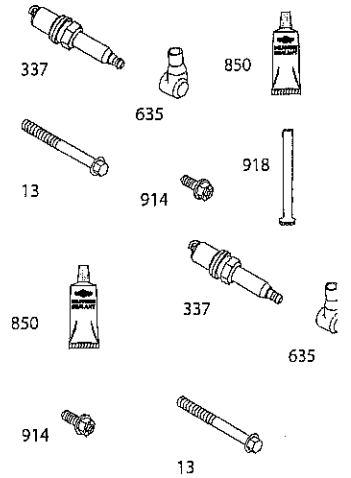
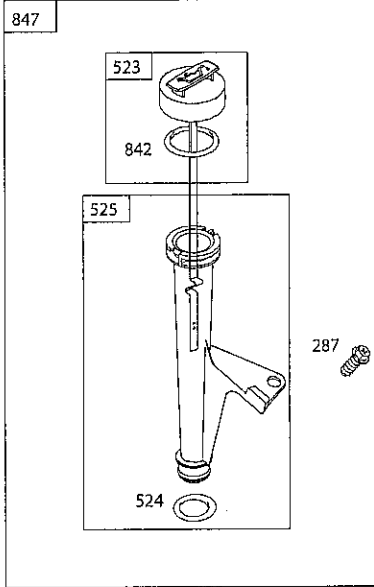
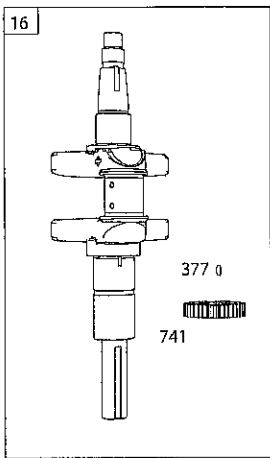
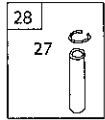
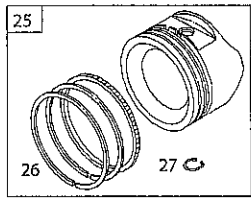
## BRIGGS & STRATTON ENGINE - - MODEL NUMBER 44R677, TYPE NUMBER 0007-B1

- |                |                       |                        |                         |                    |
|----------------|-----------------------|------------------------|-------------------------|--------------------|
| 48 SHORT BLOCK | 1036 EMISSIONS L ABEL | 1058 OPERATOR'S MANUAL | 1329 REPLACEMENT ENGINE | 1330 REPAIR MANUAL |
|----------------|-----------------------|------------------------|-------------------------|--------------------|

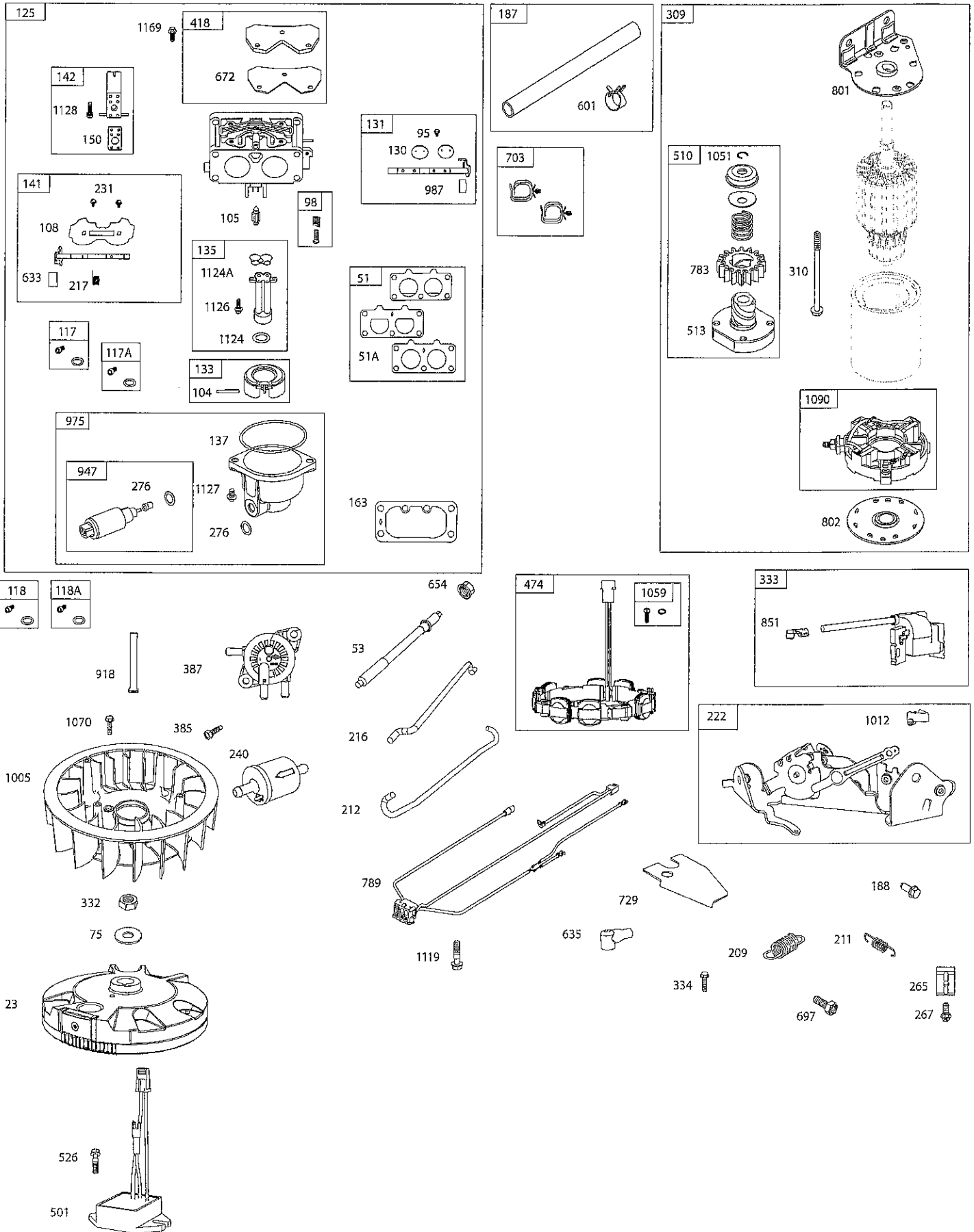


# TRACTOR- -MODEL NO. 917.992901

## BRIGGS & STRATTON ENGINE - - MODEL NUMBER 44R677, TYPE NUMBER 0007-B1



**TRACTOR- -MODEL NO. 917.992901**  
**BRIGGS & STRATTON ENGINE - - MODEL NUMBER 44R677, TYPE NUMBER 0007-B1**



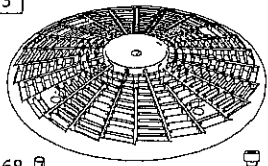


# TRACTOR- -MODEL NO. 917.992901

BRIGGS & STRATTON ENGINE - - MODEL NUMBER 44R677, TYPE NUMBER 0007-B1

74

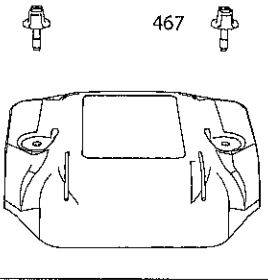
73



668

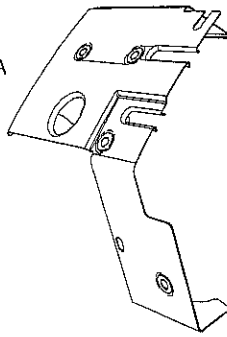
668A

968

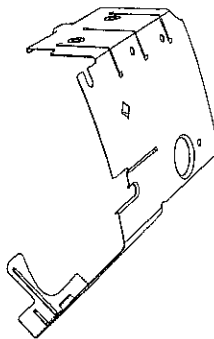


467

306A



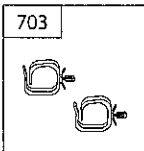
306



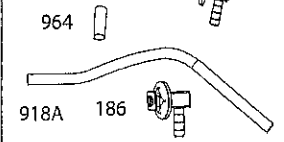
307

307A

703



186C

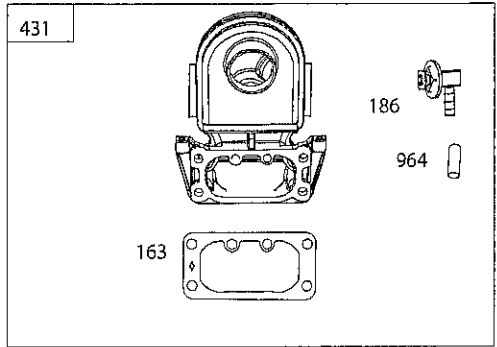


964

918A

186

431

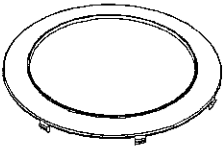


186

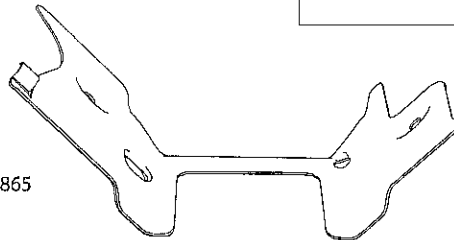
964

163

1040

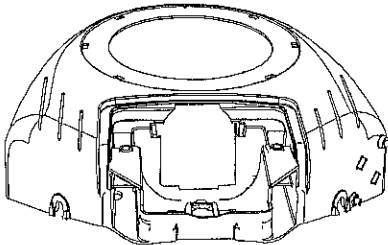


865



447

304



305

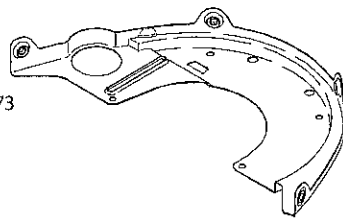
305A

305B

445



573



405

# TRACTOR- -MODEL NO. 917.992901

## BRIGGS & STRATTON ENGINE - - MODEL NUMBER 44R677, TYPE NUMBER 0007-B1

KEY NO.	PART NO.	DESCRIPTION	KEY NO.	PART NO.	DESCRIPTION
1	591695	Cylinder Assembly	125	796227	Carburetor
2	797673	Bushing/Seal Kit (Magneto Side)	130	690993	Valve-Throttle
3	391086s	Seal-Oil (Magneto Side)	131	499805	Kit-Throttle Shaft
4	796307	Sump-Engine	133	699724	Float-Carburetor
5	796231	Head-Cylinder (Cylinder #1)	135	699729	Tube-Fuel Transfer
5A	796232	Head-Cylinder (Cylinder #2)	137	690994	Gasket-Float Bowl
7	693997	Gasket-Cylinder Head	141	796228	Kit-Choke Shaft
8	792185	Breather Assembly	142	699726	Nozzle-Carburetor
9	690937	Gasket-Breather	150	841649	Gasket-Nozzle
10	691108	Screw (Breather Assembly)	163	691001	Gasket-Air Cleaner
11	792184	Tube-Breather	186	845141	Connector-Hose (EVAP)
12	591911	Gasket-Crankcase	186A	795985	Connector-Hose (Intake Manifold)
13	793988	Screw (Cylinder Head)			Connector-Hose (EVAP)
15	690946	Plug-Oil Drain	186C	799158	Line-Fuel (Cut to Required Length)
16	796237	Crankshaft	187	791766	Screw (Control Bracket)
20	795387	Seal-Oil (PTO Side)	188	691108	Adjuster-Rocker Arm
22	694966	Screw (Crankcase Cover/Sump)	192	690083	Spring-Governor (Dark Blue)
23	691053	Flywheel	209	799169	Spring-Governed Idle (No Color)
24	222698s	Key-Flywheel (Aluminum)	211	691019	Link-Throttle
25	792023	Piston Assembly (Standard)	212	695238	Link-Choke
	792072	Piston Assembly (.020" Oversize)	216	796229	Spring-Choke Return
26	792026	Ring Set (Standard)	217	799771	Gear-Governor
	792073	Ring Set (.020" Oversize)	219	793338	Washer (Governor Gear)
27	690975	Lock-Piston Pin	220	799772	Cup-Governor
28	696581	Pin-Piston	221	841026	Bracket-Control
29	796209	Rod-Connecting	222	592555	Lever-Governor Control
32	690976	Screw (Connecting Rod)	227	798856	Screw (Choke Valve)
33	697576	Valve-Exhaust	231	690718	Filter-Fuel
34	792200	Valve-Intake	240	691035	Retainer-Breather
35	694865	Spring-Valve (Intake)	250	690957	Collector-Oil
36	694865	Spring-Valve (Exhaust)	252	794389	Clamp-Casing
42	499586	Keeper-Valve	265	691024	Screw (Casing Clamp)
45	690977	Tappet-Valve	267	792629	Washer-Sealing (Aluminum)
46	792555	Camshaft	276	695410	Washer-Sealing (Fiber)
48	N/A	Short Block (Not Available At This Printing)	276A	690997	Washer-Sealing
50	591784	Manifold-Intake	276B	794271	Screw (Dipstick Tube)
51	795123	Gasket-Intake	287	697820	Housing-Blower
51A	690950	Gasket-Intake	304	591656	Screw (Blower Housing)
51B	690949	Gasket-Intake	305	691005	Screw (Blower Housing) (1/4-20x.66)
53	690951	Stud (Carburetor)			Screw (Blower Housing) (Blower Housing to Intake Elbow)
54	699816	Screw (Intake Manifold)	305A	790690	Screw (Blower Housing) (#8-32x.87)
73	494439	Screen-Rotating			Shield-Cylinder (Cylinder #2)
74	698425	Screw (Rotating Screen)	305B	691061	Shield-Cylinder (Cylinder #1)
75	691056	Washer (Flywheel)			Screw (Cylinder Shield)
95	690718	Screw (Throttle Valve)	306	591666	Screw (Cylinder Shield) (1/4-20x.66)
98	699721	Kit-Idle Speed	306A	796852	Motor-Starter
104	694918	Pin-Float Hinge	307	691003	Screw (Starter Motor)
105	797410	Valve-Float Needle	307A	691108	Nut (Flywheel)
108	699723	Valve-Choke			Armature-Magneto
117	792296	Jet-Main (Standard) (Left Jet)	309	497595	Screw (Magneto Armature)
117A	842627	Jet-Main (Standard) (Right Jet)	310	690323	Plug-Spark
118	699457	Jet-Main (High Altitude) (5000/9000 Feet) (Left Jet)	332	691059	Gasket Set-Engine
118A	699733	Jet-Main (High Altitude) (5000/9000 Feet) (Right Jet)	333	592846	
			334	691061	
121	797890	Kit-Carburetor Overhaul	337	792015	
			358	694012	

# TRACTOR- -MODEL NO. 917.992901

## BRIGGS & STRATTON ENGINE - - MODEL NUMBER 44R677, TYPE NUMBER 0007-B1

KEY NO.	PART NO.	DESCRIPTION	KEY NO.	PART NO.	DESCRIPTION
377	690979	Key-Woodruff	914	691127	Screw (Rocker Cover)
385	797409	Screw (Fuel Pump)	918	797408	Hose-Vacuum (Rocker Cover #1)
387	808656	Pump-Fuel			Hose-Vacuum (EVAP)
404	690442	Washer (Governor Crank)	918A	799160	Screw (Choke Control Bracket)
405	697820	Screw (Back Plate)	929	695239	Seal-O Ring (Oil Pump Cover) (Square Cut) (I.D. 2.48)
415	794903	Plug	943	796222	Seal-O Ring (Oil Pump Cover)
431	591661	Elbow-Intake			Solenoid-Fuel
445	591334	Filter-Air Cleaner Cartridge	943A	690589	Cap-Connector
447	691003	Screw (Air Guide Cover) (#10-24x.43)	947	798779	Cover-Oil Pump
			964	799159	Cover-Air Cleaner
467	591660	Knob-Air Cleaner	965	796221	Bowl-Fuel
474	592830	Alternator	968	591658	Seal-Throttle Shaft
501	845907	Regulator	975	796777	Fan-Flywheel
505	691029	Nut (Governor Control Lever)	987	691000	Retainer-Link
510	696541	Drive-Starter	1005	791236	Nipple-Oil Filter
513	692024	Clutch-Drive	1012	592556	Screen-Oil Pump
523	691036	Dipstick	1013	690954	Gasket-Rocker Cover
524	691032	Seal-Dipstick Tube	1017	796214	Cover-Rocker (Cylinder #1)
525	691037	Tube-Dipstick	1022	690971	Cover-Rocker (Cylinder #2)
526	691108	Screw (Regulator)	1023	793146	Pump-Oil
552	796638	Bushing-Governor Crank	1023A	499600	Rod-Push (Exhaust) (Steel)
552A	690553	Bushing-Governor Crank	1024	796220	Rod-Push (Intake) (Aluminum)
562	690311	Screw (Governor Control Lever)	1026	690981	Filter-Oil
573	790444	Plate-Back	1026A	690982	Arm-Rocker
601	691038	Hose-Clamp (Black)	1027	492932s	Arm-Rocker
615	698290	Retainer-Governor Shaft	1029	690972	Label-Emissions (Available from a Briggs & Stratton Authorized Dealer)
616	691045	Crank-Governor	1029A	807323	Plate-Trim
617	697891	Seal-O Ring (Intake Manifold) (Red)	1036		Ring-Retaining
633	699813	Seal-Choke/Throttle Shaft (Choke Shaft)	1040	791237	Operator's Manual
633A	690998	Seal-Choke/Throttle Shaft	1051	691265	Kit-Screw/Washer (Alternator)
635	66538s	Boot-Spark Plug	1058	381258TRI	Screw (Flywheel Fan)
654	690958	Nut (Carburetor) (Serrated)	1059	698516	Retainer-Brush
668	691500	Spacer (Rotating Screen)	1070	592604	Gasket Set-Valve
668A	691215	Spacer (Rotating Screen)	1090	691293	Pivot-Rocker Arm
672	690234	Gasket-Carburetor Plate	1095	694013	Screw (Alternator)
691	790574	Seal-Governor Shaft	1100	791959	Seal-O Ring (Solenoid Retainer)
697	591909	Screw (Drive Cap)	1119	691183	Seal-O Ring (Fuel Transfer Tube)
703	691010	Clip (Fuel Line)	1123	690987	Seal-O Ring (Fuel Transfer Tube)
718	690959	Pin-Locating	1124	841653	Screw (Fuel Transfer Tube)
729	797454	Clip-Wire	1124A	690988	Screw (Float Bowl)
741	690980	Gear-Timing	1126	690991	Screw (Carburetor Nozzle)
742	690328	Retainer-E Ring	1127	695407	Screw (Carburetor Cover Plate)
750	796208	Screw (Oil Pump Cover)	1128	690990	Replacement Engine (Not Available At This Printing)
783	695708	Gear-Pinion	1169	690990	Repair Manual
789	591392	Harness-Wiring	1329	N/A	Seal-O Ring (Fuel Transfer Tube Extension)
798	697890	Screw (Rocker Arm)			Key No. 121
801	691283	Cap-Drive	1330	273521	Key No. 358
802	691286	Cap-End	1353	699725	Key No. 1095
842	691031	Seal-O Ring (Dipstick Tube)			
847	499602	Dipstick/Tube Assembly			Carburetor Overhaul Kit
850	100106	Sealant-Liquid			Engine Gasket Set
851	493880s	Terminal-Spark Plug			Valve Gasket Set
865	591667	Cover-Air Guide (Valley)			
868	690968	Seal-Valve			
883	690970	Gasket-Exhaust			

**NOTE:** All component dimensions given in U.S. inches.  
1 inch = 25.4 mm

### **LIMITED WARRANTY ON CRAFTSMAN RIDING EQUIPMENT**

For two (2) years from the date of purchase, if this Craftsman Riding Equipment is maintained, lubricated and tuned up according to the instructions in the owner's manual, Sears will repair or replace free of charge any parts that are found to be defective in material or workmanship according to the guidelines of coverage listed below. Sears will also provide free labor for these applicable warranted parts for the two full years. During the first 30 days of purchase, there will be no charges to service the product at your home for issues covered by this warranty. (See exclusions below). For your convenience, IN HOME warranty service will still be available after the first 30 days of purchase, but a trip charge will apply. This charge will be waived if the Craftsman product is dropped off at an authorized Sears location. For the nearest authorized Sears location, please call 1-800-4-MY-HOME®. This warranty applies only while this product is within the United States.

This Warranty does not cover:

- Expendable items which become worn during normal use, including but not limited to blades, spark plugs, air cleaners, belts, and oil filters.
- Standard Maintenance Servicing, oil changes, or tune-ups
- Tire replacement or repair caused by punctures from outside objects, such as nails, thorns, stumps, or glass.
- Repairs necessary because of operator abuse, including but not limited to, damage caused by towing objects beyond the capability of the riding equipment, impacting objects that bend the frame or crankshaft, or over-speeding the engine.
- Repairs necessary because of operator negligence, including but not limited to, electrical and mechanical damage caused by improper storage, failure to use the proper grade and amount of engine oil, failure to keep the deck clear of flammable debris, or failure to maintain the equipment according to the instructions contained in the owner's manual.
- Engine (fuel system) cleaning or repairs caused by fuel determined to be contaminated or oxidized (stale). In general, fuel should be used within 30 days of its purchase date.
- Normal deterioration and wear of the exterior finishes, or product label replacement.
- Riding equipment used for commercial or rental purposes.

### **LIMITED WARRANTY ON BATTERY**

For ninety (90) days from date of purchase, if any battery included with this riding equipment proves defective in material or workmanship and our testing determines the battery will not hold a charge, Sears will replace the battery at no charge. During the first 30 days of purchase, there will be no charges to replace the battery at your HOME. After the first 30 days, for your convenience, IN-HOME warranty service will still be available but a trip charge will apply. This charge will be waived if the Craftsman product is dropped off at an authorized Sears location. For the nearest authorized Sears location, please call 1-800-4-MY-HOME®.

This battery warranty applies only while this product is within the United States.

This warranty gives you specific legal rights, and you may also have other rights, which vary, from state to state.

Sears Brands Management Corporation, Dept.817WA, Hoffman Estates, IL 60179

