



**REPAIR PARTS MANUAL**  
**MODEL NO. 253692**  
**Lawn Tractor**



# HOW TO USE THIS MANUAL

This manual is designed to provide the customer with a means to identify the parts on his/her tractor when ordering repair parts. The illustrations may or may not represent the actual assemblies; therefore, it is not recommended to use this manual as a guide to assemble or disassemble the tractor. Some hardware and parts are drawn larger in order to more readily identify them.

Each tractor has its own model number.

The model number for your tractor can be found on the fender under the seat.

When ordering parts, always give the following information:

- Product - "Tractor"
- Model Number - "253692"
- Part Number
- Part Description

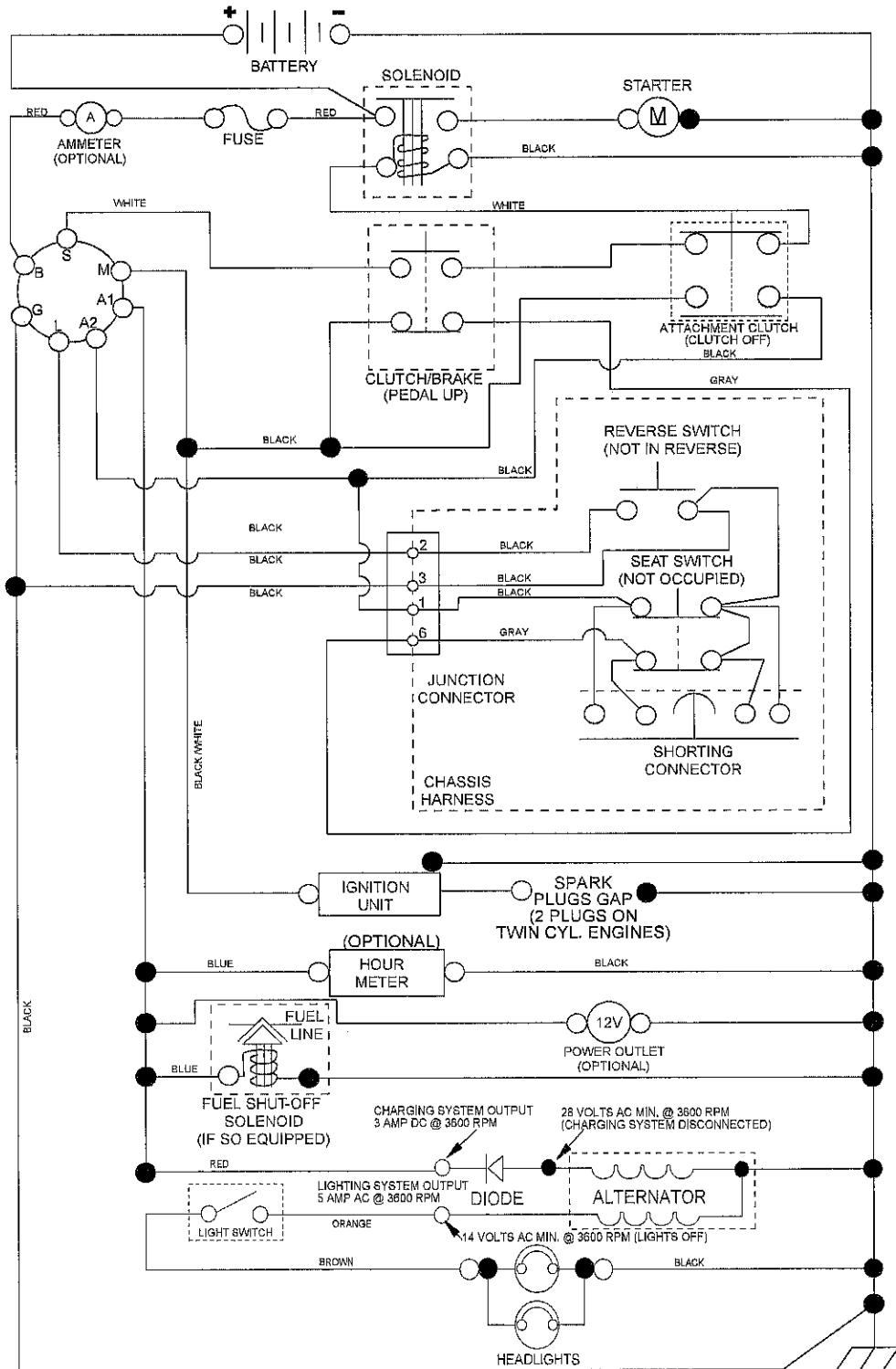
## TABLE OF CONTENTS

<b>SCHEMATIC .....</b>	<b>3</b>
<b>ELECTRICAL.....</b>	<b>4-5</b>
<b>CHASSIS .....</b>	<b>6-7</b>
<b>DRIVE.....</b>	<b>8-9</b>
<b>STEERING .....</b>	<b>10-11</b>
<b>SEAT .....</b>	<b>12</b>
<b>DECALS.....</b>	<b>13</b>
<b>ENGINE.....</b>	<b>14-15</b>
<b>MOWER LIFT.....</b>	<b>16-17</b>
<b>MOWER DECK .....</b>	<b>18-19</b>
<b>TRANSAXLE BREAKDOWN .....</b>	<b>20-21</b>
<b>ENGINE BREAKDOWN.....</b>	<b>22-26</b>
<b>WARRANTY.....</b>	<b>BACK COVER</b>

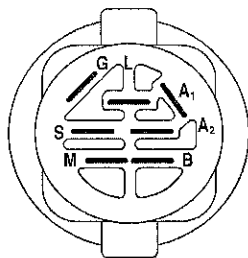
# TRACTOR- -MODEL NO. 917.253692

## SCHEMATIC

SCH11

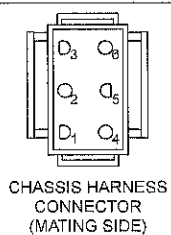


**NOTE**  
YOUR TRACTOR IS EQUIPPED WITH A SPECIAL ALTERNATOR SYSTEM. THE LIGHTS ARE NOT CONNECTED TO THE BATTERY, BUT HAVE THEIR OWN ELECTRICAL SOURCE. BECAUSE OF THIS, THE BRIGHTNESS OF THE LIGHTS WILL CHANGE WITH ENGINE SPEED. AT IDLE THE LIGHTS WILL DIM. AS THE ENGINE IS SPEEDED UP, THE LIGHTS WILL BECOME THEIR BRIGHTEST.

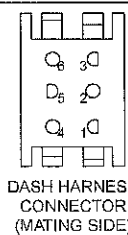


IGNITION SWITCH

POSITION	CIRCUIT	"MAKE"
OFF	M+G+A1	
RUN/OVERRIDE	B+A1	
RUN	B+A1	L+A2
START	B + S + A1	

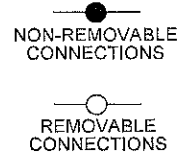


CHASSIS HARNESS CONNECTOR (MATING SIDE)



DASH HARNESS CONNECTOR (MATING SIDE)

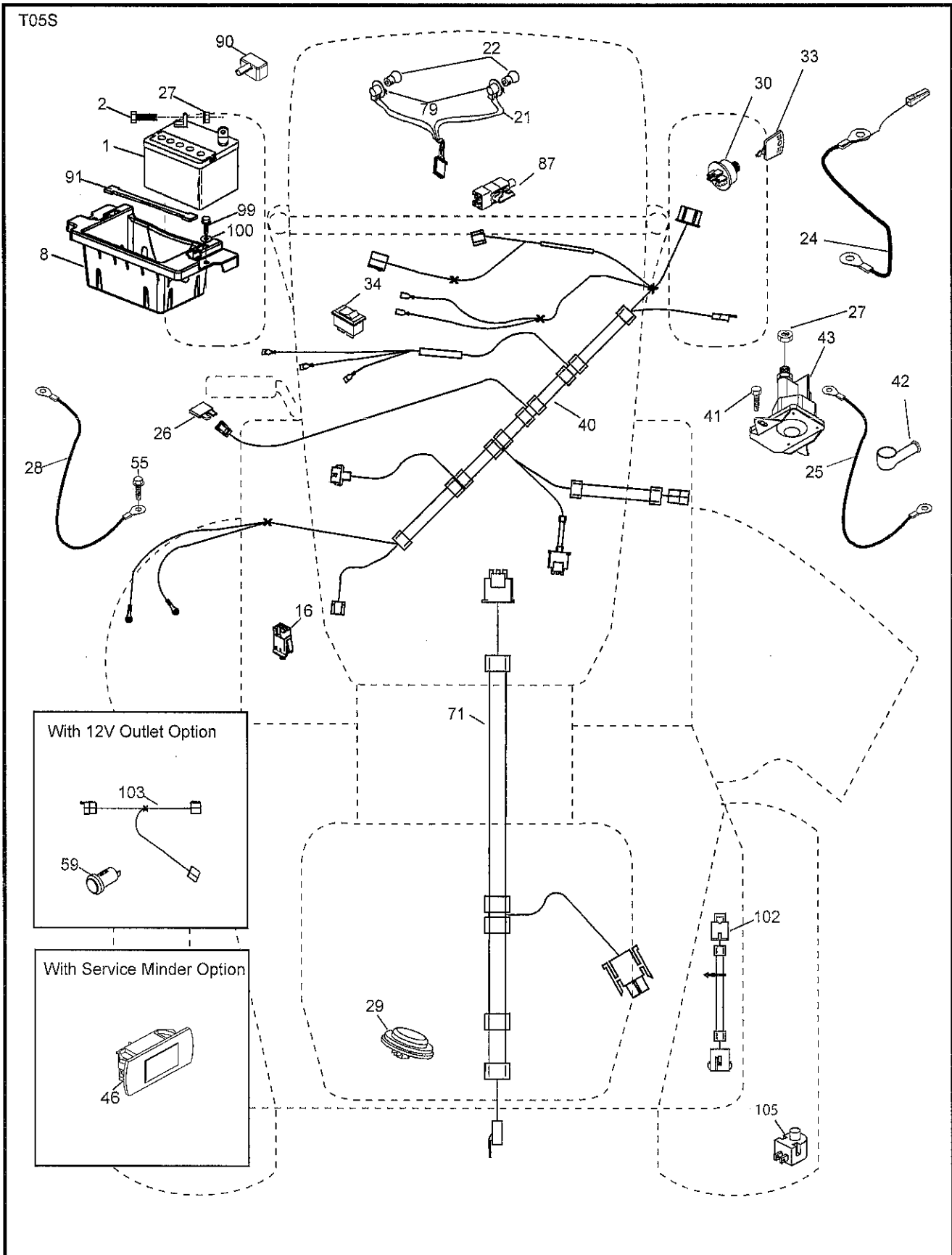
WIRING INSULATED CLIPS  
NOTE: IF WIRING INSULATED CLIPS WERE REMOVED FOR SERVICING OF UNIT, THEY SHOULD BE RE-INSTALLED TO PROPERLY SECURE YOUR WIRING.



# REPAIR PARTS

## TRACTOR- -MODEL NO. 917.253692

### ELECTRICAL



# REPAIR PARTS

TRACTOR- -MODEL NO. 917.253692

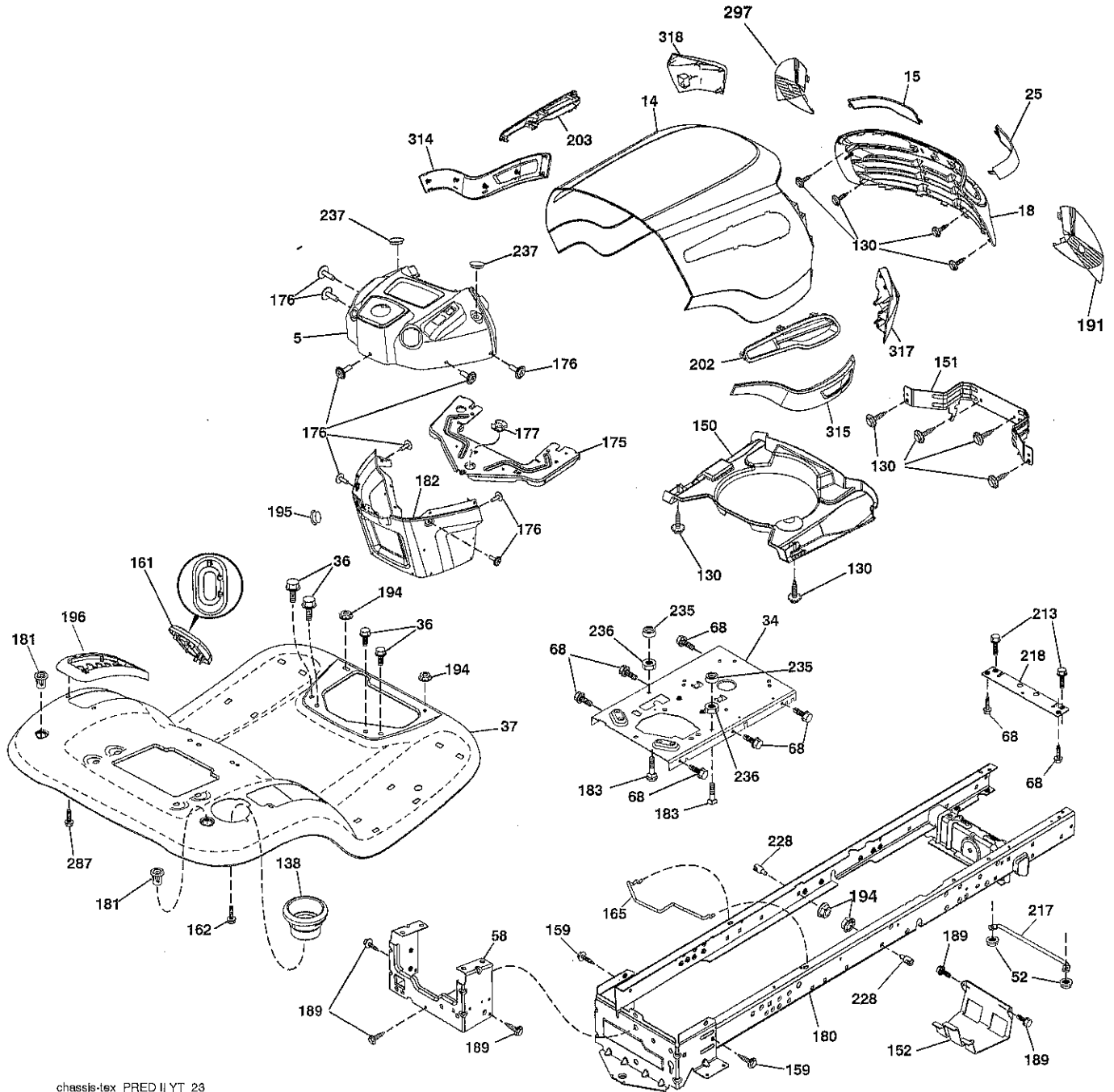
## ELECTRICAL

KEY NO.	PART NO.	DESCRIPTION
1	163465	Battery
2	74760412	Bolt Hex Hd 1/4-20 unc x 3/4
8	186491	Box Battery
16	176138	Switch Interlock Push-In
21	400252	Harness Socket Light w/4152J
22	4152J	Bulb Light
24	400253	Cable Btry.
25	412895	Cable Starter
26	175158	Fuse
27	73510400	Nut Keps Hex 1/4-20 unc
28	145491	Cable, Ground
29	401545	Switch, Seat
30	193350	Switch, Ign
33	411934	Key/Chain
34	110712X	Switch Light / Reset
40	401098	Harness Ign. Dash
41	17720408	Screw Thd Cut 1/4-20 x 1/2
42	131563	Cover, Terminal
43	192507	Solenoid
46	401763	Gauge SRVCMNDR HRMTR
55	17060512	Screw Thdrol 5/16-18 x 3/4 TYTT
71	194276	Harness Ign. Chassis
79	175242	Bulbholder Asm. Incan Descent
87	197802	Switch Interlock Clutch Cable
90	435395	Cover Terminal Battery
91	190270	Strap Btry.
99	17670412	Screw Hexwsh Thdrol 1/4-20 x 3/4
100	19091416	Washer 9/32 x 7/8 16 Ga.
102	404454	Harness Pigtail K46 ROS
105	407568	Switch Reverse

**NOTE:** All component dimensions given in U.S. inches.  
1 inch = 25.4 mm.

# REPAIR PARTS

## TRACTOR- -MODEL NO. 917.253692 CHASSIS AND ENCLOSURES



chassis-tex\_PRED II YT\_23

# REPAIR PARTS

## TRACTOR- -MODEL NO. 917.253692

### CHASSIS AND ENCLOSURES

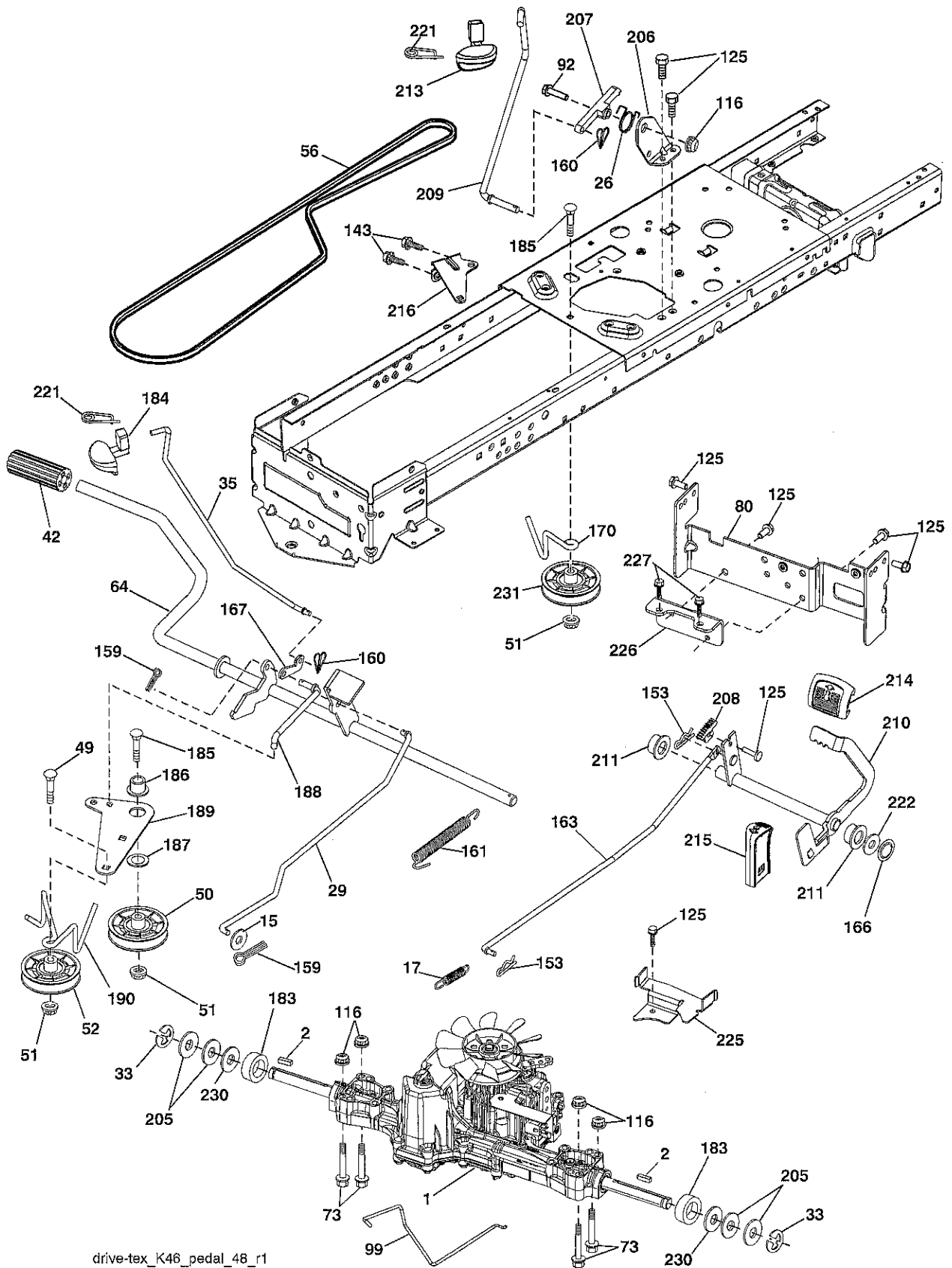
KEY NO.	PART NO.	DESCRIPTION
5	421810X428	Dash
14	421154X615	Hood
15	421493X599	Lens LH
18	441721X428	Grille
25	421494X599	Lens RH
34	196125	Plate Engine
36	17060512	Screw 5/16-18 x 3/4
37	414878X615	Fender
52	73680500	Nut Crown Lock 5/16-18
58	412280	Drawbar Upper
68	17490508	Screw Thdrol 5/16-18 x 1/2
130	416358	Screw # 10 x .750 BOS Thread
138	193224X428	Cupholder
150	199411	Duct Heat Hood
151	196332	Bracket Pivot
152	199535	Shield Browning/Debris
159	17000612	Screw Hexwsh Thdrol 3/8-16 x 3/4
161	193229X428	Window Fuel
162	142432	Screw Hex Wsh Hi-Lo 1/4 x 1/2
165	196826	Support Tank Rear
175	196304	Crossmember
176	400776	Screw 10-24 x 5/8 Wshd Qdrx
177	195227	Bushing Steering
180	415063	Chassis
181	193102X428	Bushing Mtg. Fender Crgo.
182	406859	Dash Lower
183	74520520	Bolt Full Thread 5/16-18 x 1-1/4
189	17000512	Screw 5/16 - 18 x 3/4
191	425407	Insert Reflective RH
194	73900500	Nut Lock Hex Flange 5/16-18
195	401556X428	Plug Hole Dash 12V Adapter
196	414579	Console Asm. Deck Lift
202	441724X428	Vent Side Hood RH
203	441725X428	Vent Side Hood LH
213	74760512	Bolt hex HD 5/16-18 unc x 3/4
217	409167	Rod Pivot Chassis
218	196395	X piece hood stop
228	195161	Stud Fastener
235	406129	Spacer Fender
236	73930500	Nut Center Lock 5/16-18
237	403704	Plug Mount Cargo
287	17600406	Screw Hex Washhead 1/4-20 x 3/8
297	425406	Insert Reflective LH
314	441669	Trim SD LH
315	441668	Trim SD RH
317	421257X615	Bumper RH
318	421258X615	Bumper LH

**NOTE:** All component dimensions given in U.S. inches.  
1 inch = 25.4 mm.

# REPAIR PARTS

TRACTOR- -MODEL NO. 917.253692

## DRIVE



drive-tex\_K46\_pedal\_48\_r1



# REPAIR PARTS

## TRACTOR- -MODEL NO. 917.253692

### DRIVE

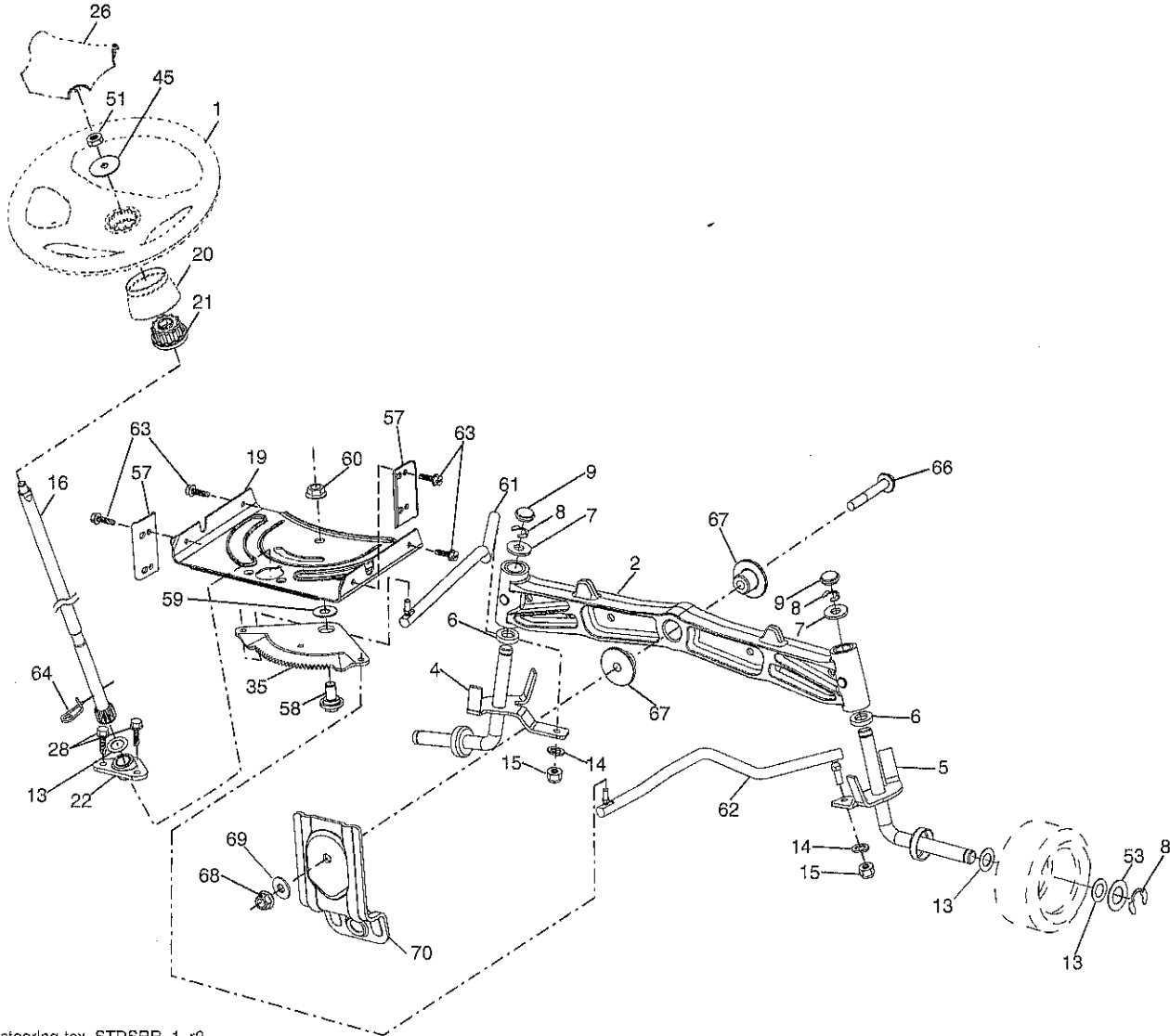
KEY NO.	PART NO.	DESCRIPTION	KEY NO.	PART NO.	DESCRIPTION
1	426120	Transaxle, Tufftorq K46BT (See Transaxle Breakdown)	170	413430	Keeper Belt Centerspan
2	123583X	Key	183	137057	Spacer Axle
15	19131316	Washer 13/32 x 13/16 x 16 Ga.	184	196439X667	Handle Parking Brake
17	413678	Spring, Brake	185	72110622	Bolt
26	199679	Spring Return Cruise	186	194321	Spacer Retainer
29	403806	Rod, Brake	187	19133210	Washer
33	12000001	Ring E	188	194323	Link Clutch Ground Drive
35	435486	Rod, Brake, Park	189	194317	Bellcrank Ground Drive
42	8883R	Cover, Foot Pedal	190	194318	Keeper Bellcrank Ground Drive
49	72110614	Bolt	205	121748X	Washer
50	194327	Pulley Idler Flat	206	197867	Bracket Mount Latch Cruise
51	73900600	Lock Nut 3/8-16	207	197868	Latch Control Cruise
52	194326	Idler V-Groove 910" Offset	208	197869	Bolt Sector Control Cruise
56	130969	V-Belt, Drive	209	199592	Rod Control Cruise
64	197865	Shaft Asm. Pedal Brake Control	210	400980	Rocker Asm. Pedal Control
73	74490544	Bolt Hex Flghd. 5/16-18 Gr. 5	211	120183X	Bearing, Nylon
80	440619	Strap Torque	213	196441X428	Knob Control Cruise
92	74760520	Bolt Fin. Hex 5/16-18 unc x 1.25	214	421263	Pad Pedal Forward
99	415742	Rod Asm. Bypass	215	197301X428	Pad Pedal Reverse
116	73900500	Nut Lock Hex Flange 5/16-18	216	196131	Bracket Pulley Idler
125	17000512	Screw 5/16-18 x 3/4	221	403187	Retainer Spring Clip Handle
143	17490508	Screw 5/16-18 x 1/2	222	79212010	Washer
153	4497H	Retainer Spring	225	403319	Keeper Belt Transaxle
159	76020412	Pin Cotter 1/8 x 3/4	226	401564	Bracket Mount Torque
160	169484	Retainer Clip	227	17490512	Screw Thdrol 5/16-18 x 3/4
161	105709x	Spring, Return, Clutch	230	188967	Washer Harden
163	401034	Rod Pedal Control	231	407287	Idler V-Groove 1.688" OFFSET
166	429164	Nut, Push			
167	405257	Latch Brake Parking			

**NOTE:** All component dimensions given in U.S. inches  
1 inch = 25.4 mm

# REPAIR PARTS

TRACTOR- -MODEL NO. 917.253692

## STEERING ASSEMBLY



steering-tex\_STDSRR\_1\_r2

# REPAIR PARTS

TRACTOR- -MODEL NO. 917.253692

## STEERING ASSEMBLY

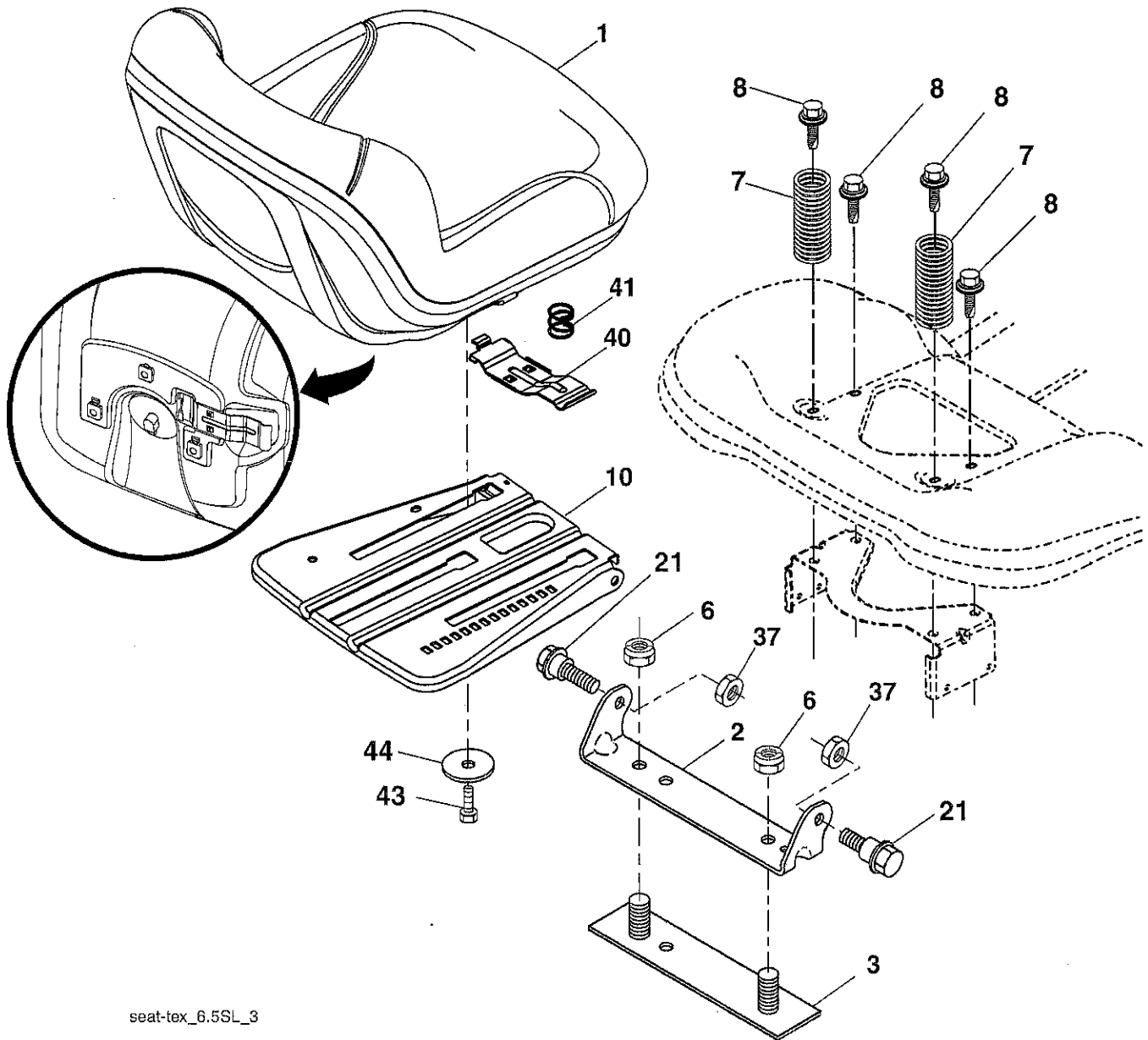
KEY NO.	PART NO.	DESCRIPTION
1	414803X428	Wheel, Steering
2	195968	Axle Asm., Front
4	403087	Spindle Asm., LH
5	403088	Spindle Asm., RH
6	6266H	Bearing, Race Thrust Harden
7	121748X	Washer 25/32 x 1-5/8 x 16 Ga.
8	12000029	Ring, Klip #T5304-75
9	184946X667	Cap, Spindle
13	121749X	Washer 25/32 x 1-1/4 x 16 Ga.
14	STD551137	Washer, Lock Hvy Hlcl Spr 3/8
15	73540600	Nut, Crown Lock 3/8-24 unf
16	194746	Shaft Steering
19	194729	Plate Steering
20	199676X428	Boot, Steering
21	186737	Adapter, Wheel Steering
22	420537	Strg. Supt. Lower
26	414852X428	Insert, Wheel Steering
28	17000612	Screw 3/8-16 x 3/4
35	194732	Gear, Sector Plate
45	19183812	Washer 9/16 x 2-3/8 x 12 Ga.
51	73940800	Nut Hex 1/2-20 unf
53	188967	Washer Hardened .793x1.637x.060
57	407465	Bracket Upstop
58	194747	Bolt Shoulder Sector Pivot CFM
59	194748	Washer Thrust Sector Steering
60	73971000	Nut Flange Lock 5/8-11
61	194740	Draglink LH
62	194741	Draglink, RH
63	17000512	Screw 5/16-18 x 3/4
64	199849	Retainer Clip Spring Steering
66	71020748	Bolt Hex Fghd 7/16-14 x 3 Serr
67	194737	Bushing PM Front Axle
68	73900700	Nut Lock Flange 7/16-14 Gr. 5
69	199162	Washer 1.5 x .505 x .118
70	196197	Bracket Deck Susp. Front

**NOTE:** All component dimensions given in U.S. inches.  
1 inch = 25.4 mm.

# REPAIR PARTS

TRACTOR- -MODEL NO. 917.253692

## SEAT ASSEMBLY



seat-tex\_6.5SL\_3

KEY NO.	PART NO.	DESCRIPTION
1	423645	Seat
2	180166	Bracket Pivot Fender
3	140675	Strap, Asm Fender
6	STD541437	Nut, Lock W/Ins. 3/8-16 unc
7	124181X	Spring, Seat Cprsn
8	171877	Bolt 5/16-18 unc x 3/4 w/Sems
10	196977	Pan, Seat
21	171852	Bolt, Shoulder 5/16-18

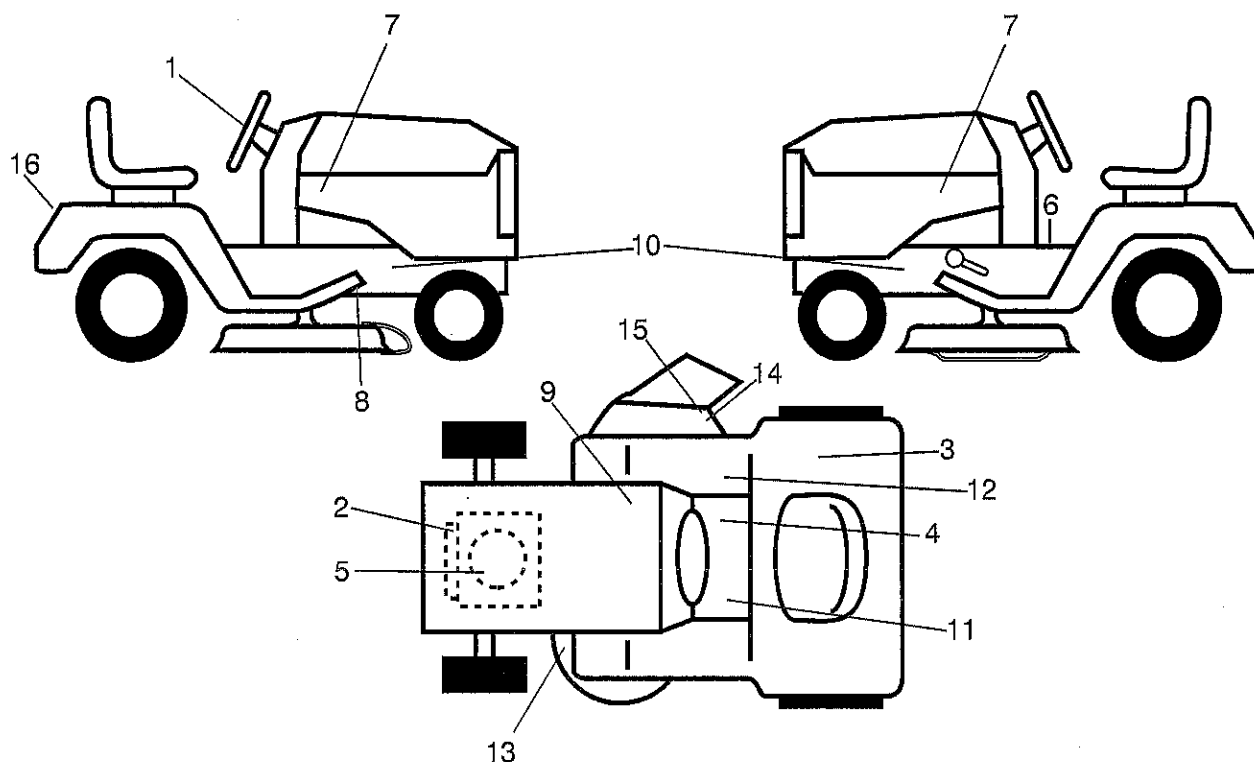
KEY NO.	PART NO.	DESCRIPTION
37	STD541431	Nut, Lock 5/16-18 unc
40	197661	Handle Slide Seat
41	198200	Spring Latch Seat
43	74760612	Bolt 3/8-16 x 3/4
44	19133812	Washer 13/32 x 2-3/8 x 12 Ga.

**NOTE:** All component dimensions given in U.S. inches.  
1 inch = 25.4 mm

# REPAIR PARTS

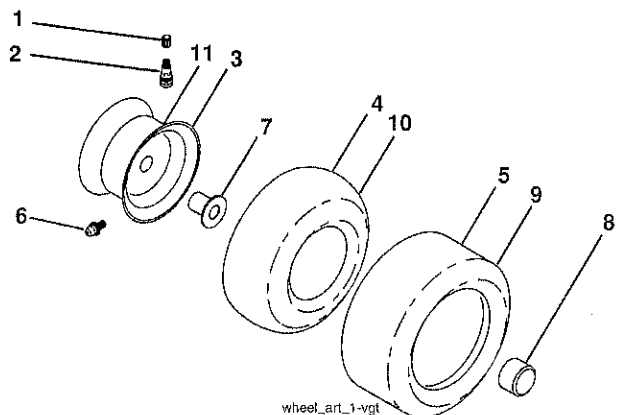
TRACTOR- -MODEL NO. 917.253692

## DECALS



KEY NO.	PART NO.	DESCRIPTION	KEY NO.	PART NO.	DESCRIPTION
1	439525	Decal, Steering	14	196357	Decal, Deflector Wrn. Cutfinger Sym.
2	196841	Decal, Warning Engine Sym.	15	182166	Decal, Cutfinger CE
3	180432	Decal, Fender 100 DB/CE	16	441121	Decal, Fender
4	178302	Decal, Operator Cruise Sym.	--	193226X428	Pad, Footrest LH
5	437426	Decal, Engine HP	--	400981X428	Pad, Footrest
6	400389	Decal, Fender Operator's	--	166960	Decal, Bypass
7	441123	Decal, Hood	--	162598	Decal, Drawbar Load Limit
8	421534	Decal, V-Belt Schematic Drive	--	442363	Manual, Operator's (Euro)
9	145005	Decal, Battery Dnge/Poi	--	442364	Manual, Operator's (Scand)
10	159736	Decal, Chassis Hot Muffler	--	442365	Manual, Operator's (E-Bloc)
11	159737	Decal, Brake/Clutch Sym.	--	442366	Manual, Operator's (Baltic)
12	140837	Decal, Saddle Brake Parking	--	442576	Manual, Parts
13	160396	Decal, Mower V-Belt SCH.			

## WHEELS & TIRES



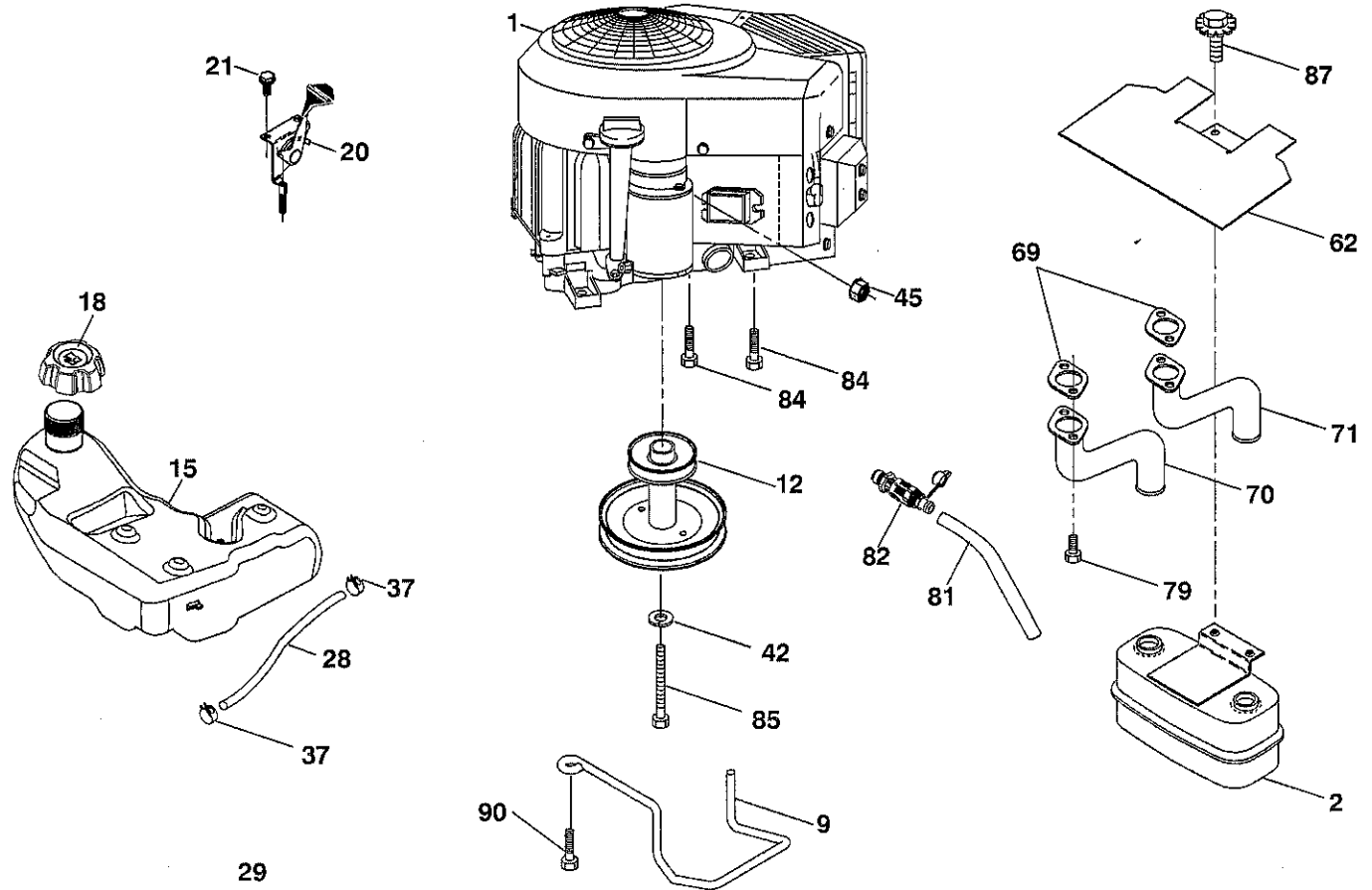
KEY NO.	PART NO.	DESCRIPTION
1	59192	Cap, Valve, Tire
2	65139	Stem, Valve
3	106732X613	Rim Assembly, Front
4	59904	Tube, Front
5	106222X	Tire, Front
6	278H	Fitting, Grease
7	9040H	Bearing, Flange
8	104757X428	Cap, Axle (Front Wheel Only)
9	420531	Tire, 18 x 9.5-8 TurfSaver LT
10	7152J	Tube, Rear
11	106108X613	Rim Assembly, Rear
--	144334	Sealant, Tire (10 oz. Tube)

**NOTE:** All component dimensions given in U.S. inches  
1 inch = 25.4 mm

# REPAIR PARTS

TRACTOR- -MODEL NO. 917.253692

## ENGINE



**SPARK ARRESTER KIT**

engine-tex\_bs-2cyl\_73

# REPAIR PARTS

## TRACTOR- -MODEL NO. 917.253692

### ENGINE

KEY NO.	PART NO.	DESCRIPTION
1	438773	Engine B&S Model No. 445677-2344-B1 (See engine Breakdown)
2	149723	Muffler
9	194320	Keeper Belt Engine
12	405472	Pulley Engine
15	442448	Tank Fuel
18	430214	Cap Asm Fuel
20	421473X428	Control Throttle
21	416358	Screw 10 x .750 BOS Thread
28	8543R	Fuel Line
29	137180	Spark Arrester Kit
37	123487X	Clamp Hose
42	10040700	Washer Lock 7/16
45	73510400	Nut Keps Hex 1/4-20 unc
62	434017	Shield Heat Muffler
69	165391	Gasket
70	159955	Exhaust Tube LH
71	160589	Exhaust Tube RH
79	183906	Screw 5/16-18 x .75
81	148456	Tube Drain Oil Easy
82	428287	Drain Oil Valve
84	17060620	Screw 3/8-16 x 1-1/4
85	173937	Bolt Hex 7/16-20 x 4 x Gr. 5-1.5
87	171877	Bolt 5/16-18 unc x 3/4 w/Sems
90	17000616	Screw 3/8-16 x 1.0

**NOTE:** All component dimensions given in U.S. inches  
1 inch = 25.4 mm

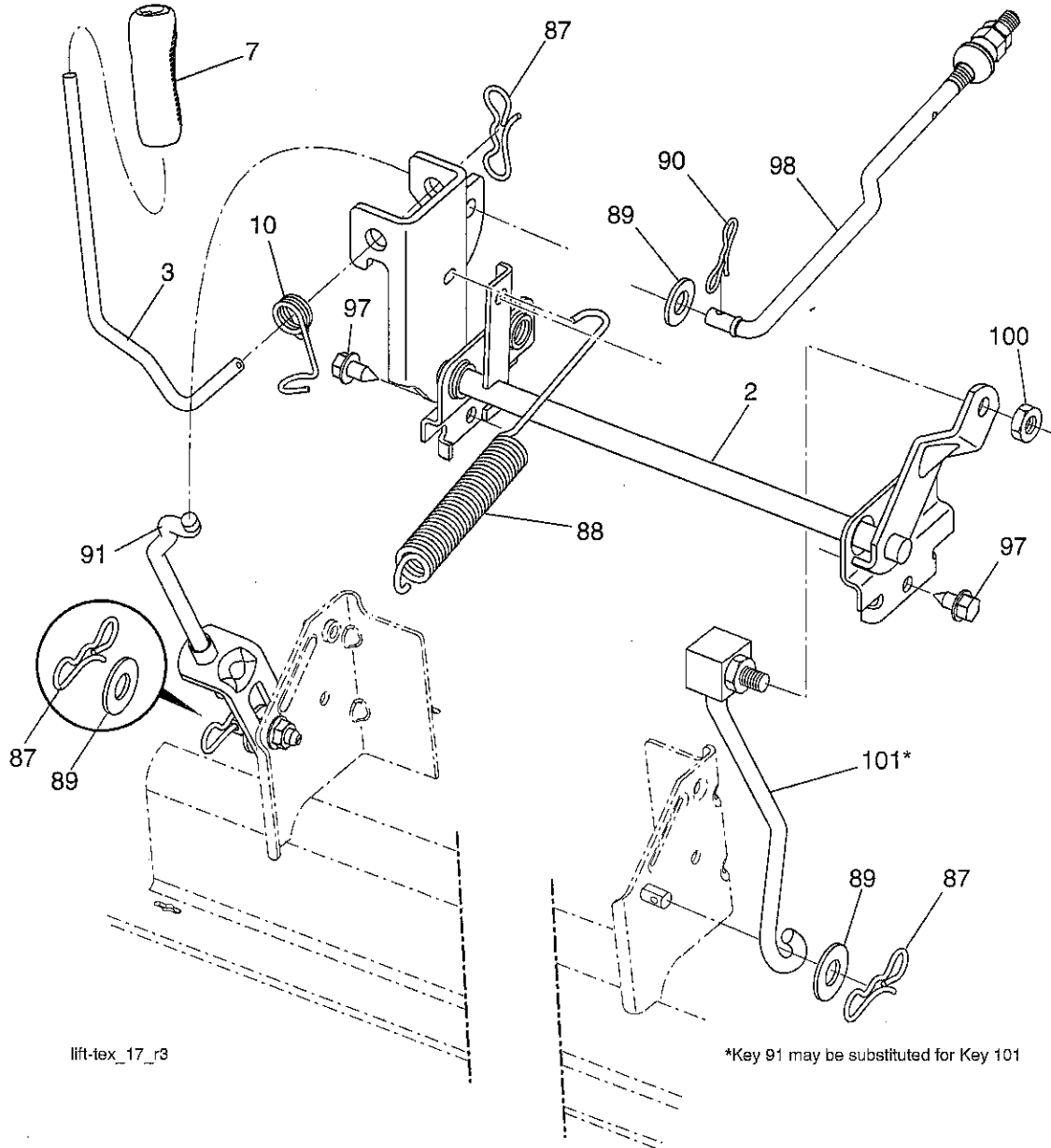
### Engine Power Rating Information

The gross power rating for individual gas engine models is labeled in accordance with SAE (Society of Automotive Engineers) code J11940 (Small Engine Power & Torque Rating Procedure), and rating performance has been obtained and corrected in accordance with SAE J1995 (Revision 2002-5). Actual gross engine power will be lower and is affected by, among other things, ambient operating conditions and engine-to-engine variability. Given both the wide array of products on which engines are placed and the variety of environmental issues applicable to operating the equipment, the gas engine will not develop the rated gross power when used in a given piece of power equipment (actual "on-site" or net horsepower). This difference is due to a variety of factors including, but not limited to, accessories (air cleaner, exhaust, charging, cooling, carburetor, fuel pump, etc.), application limitations, ambient operating conditions (temperature, humidity, altitude), and engine-to-engine variability. Due to manufacturing and capacity limitations, Briggs & Stratton may substitute an engine of higher rated power for this Series engine.

# REPAIR PARTS

TRACTOR- -MODEL NO. 917.253692

## MOWER LIFT



lift-tex\_17\_r3

\*Key 91 may be substituted for Key 101\*



# REPAIR PARTS

TRACTOR- -MODEL NO. 917.253692

## MOWER LIFT

KEY NO.	PART NO.	DESCRIPTION
2	422027	Shaft Asm., Lift
3	195231	Lever Asm., Lift RH
7	196492X428	Grip, Lever
10	196314	Spring Torsion
87	194209	Pin Cotter 7/16 Bow Tie Lock
88	410710	Spring Lift Assist
89	19191912	Washer Clear Zinc
90	194208	Pin Cotter 5/16 Bow Tie Lock
91	195181	Link Lift Susp Mower Rear
97	17000612	Screw 3/8-16 x .75
98	195270	Link Lift Susp. Front Mower
100	73930600	Nut Centerlock 3/8-16 unc
101	407003	Link Asm. Lift FXD

**NOTE:** All component dimensions given in U.S. inches  
1 inch = 25.4 mm



# REPAIR PARTS

## TRACTOR- -MODEL NO. 917.253692

### MOWER

KEY NO.	PART NO.	DESCRIPTION	KEY NO.	PART NO.	DESCRIPTION
1	441611X615	Mower Housing	69	72140505	Bolt
2	405507	Cover Mandrel LH	70	199972	Clutch Asm. Manual
3	405506	Cover Mandrel RH	101	405454	Cover Mulch 46"
6	195186	Arm Suspension	102	71081010	Screw Pan HD Phillip 10-24 x 5/8
7	416358	Screw #10 x 0.750 BOS Thread	103	10071000	Washer Lock #10
8	193003	Bolt/Washer Asm. 7/16-20 unf	104	19061216	Washer #10
11	403107	Blade Mulching	105	160793	Latch Asm.
13	192872	Shaft Assembly, Mandrel	106	2029J	Nut Weld .327/.304 #10-24
14	187281	Housing, Mandrel	113	17000510	Screw 5/16-18
15	110485X	Bearing, Ball, Mandrel	116	4898H	Bolt, Shoulder
19	196539	Bolt, Shoulder	117	188606	Wheel, Gauge
21	73680500	Nut	118	73930600	Nut, Crownlock 3/8-1
23	192557	Bracket, Deflector	119	19121414	Washer 13/32 x 7/8 x 14 Ga.
24	105304X	Cap, Sleeve	122	197258	Keeper Belt Eng. LH
25	197026	Spring, Torsion, Deflector	123	197259	Keeper Belt Eng. RH
26	110452X	Nut, Push	144	199204	Keeper Belt
27	405357	Shield, Deflector	145	193197	Pulley Idler
29	131491	Rod, Hinge	147	401872	Spring Return
30	173984	Screw Thdrol. Rolling Wsh. Hd.	152	435111	Cable Clutch Manual w/Spr.
31	187690	Washer, Spacer	188	195161	Stud Fastener
32	197473	Pulley, Mandrel	189	73900500	Nut Lock Hex Flange
33	400234	Nut, Toplock, Flanged	195	17000612	Screw Hex Wsh. Thdr. 3/8 -16 x 3/4
34	72110612	Bolt Carr. Sh. 3/8-16 x 1-1/2 Gr. 5	197	19131312	Washer 13/32 x 13/16 x 12 Ga.
36	197379	Pulley, Idler, Flat	198	403149	Baffle Center Front
37	19131316	Washer 13/32 x 13/16 x 16 Ga.	199	403150	Baffle Front RH
38	432520	Keeper Belt Mandrel	200	413524	Washer 13/32 x 1 x 1/2 x 11 Ga
40	73900600	Nut, Lock Flg. 3/8-16 unc	240	74520636	Bolt Fin. Hex 3/8-16 x 2-1/4 Gr. 5
42	198410	Spring Torsion Brake	241	152927	Screw
43	197256	Spring Torsion Retainer	242	415598	Port Washout
46	137729	Screw	--	192870	Mandrel Assembly (Includes housing, shaft assembly, and bearing only - pulley/nut/washer and blade bolt/washers not included)
47	197250	Bracket Clutch Cable	--	427650	Replacement Mower, Complete
55	197249	Arm, Idler			
56	199092	Spacer, Retainer			
57	17000616	Screw Hex Wsh. Thd. 3/8-16 x 1			
59	141043	Guard, Tuv. Idler (94)			
60	199471	Arm Brake Mower			
63	199477	Arm Brake Mower			
64	405138	Linkage Brake			
67	198398X667	Handle, Clutch Cable			
68	405143	V-Belt			

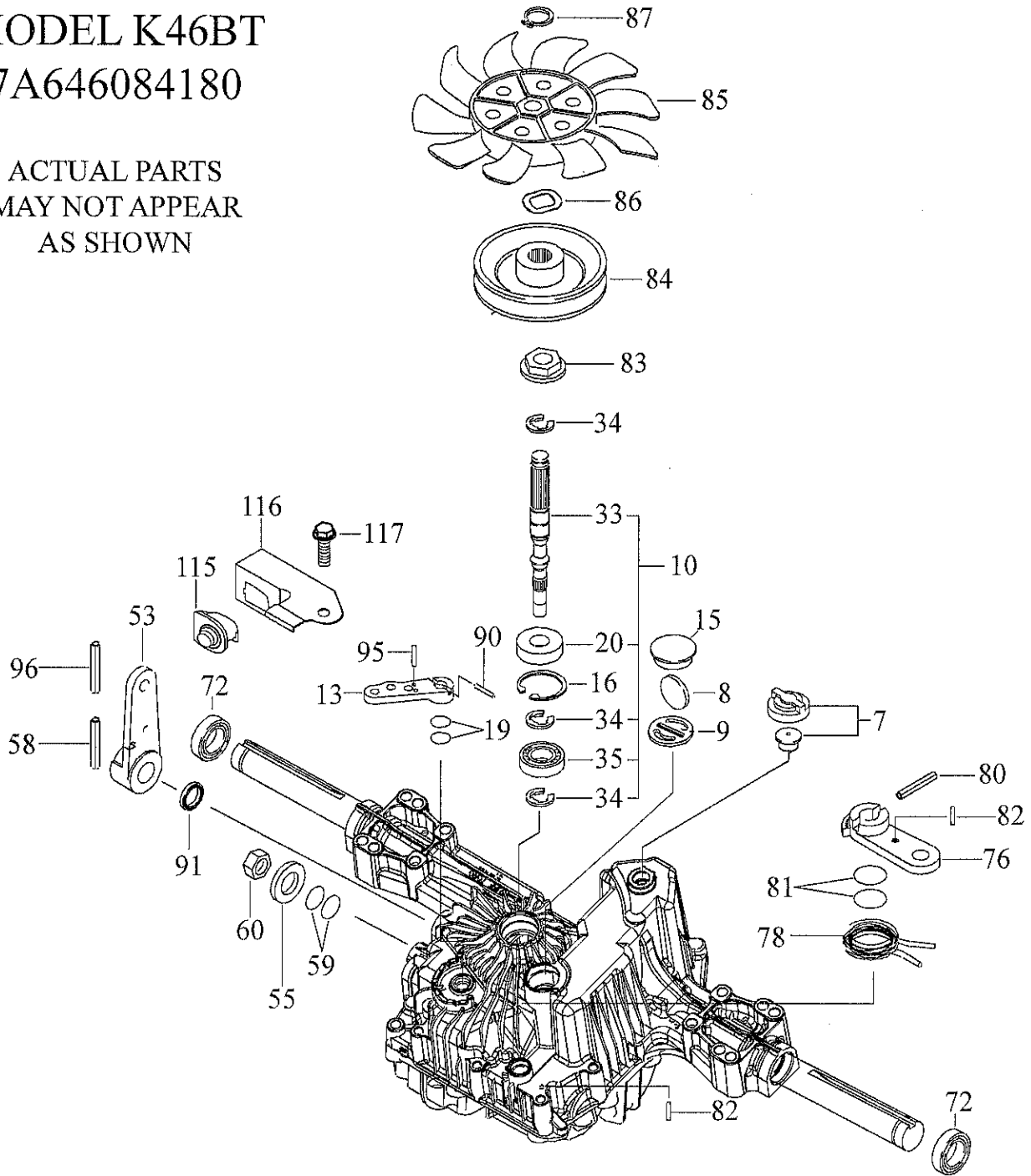
**NOTE:** All component dimensions given in U.S. inches  
1 inch = 25.4 mm

TRACTOR - - MODEL NUMBER 917.253692

TUFF TORQ TRANSAXLE - MODEL NUMBER K46BT

MODEL K46BT  
7A646084180

ACTUAL PARTS  
MAY NOT APPEAR  
AS SHOWN



**TRACTOR - - MODEL NUMBER 917.253692****TUFF TORQ TRANSAXLE - MODEL NUMBER K46BT**

<b>KEY NO.</b>	<b>PART NO.</b>	<b>DESCRIPTION</b>
7	414395	Vent Valve 15
8	414396	Magnet
9	414397	Magnet Holder
10	415923	Pump Shaft/bearing Kit
13	414398	Bypass Lever
15	414399	Sealing Cap 30
16	414400	Snap Ring C 35
19	414401	O-ring 1a P10a
20	414402	Seal Tc 153507
33	414403	Pump Shaft (Standard)
34	414404	E-ring 15
35	414405	Bearing 6202c3
53	414431	Control Lever F
55	415924	Washer 12
58	415925	Roll Pin 6 * 40
59	415926	O-ring 1a P14
60	415927	Nut 12
72	414407	Seal 19 * 32 * 8
76	414408	Brake Lever
78	414409	Brake Return Spring
80	414410	Spring Pin 5 * 32
81	414411	O-ring 1a P12
82	414412	Spring Pin 4 * 16
83	414413	Spine Collar
84	414414	Pulley L
85	414415	Fan, Black
86	414416	Wave Washer
87	414417	Snap Ring
90	414418	Spring Pin 3.0a * 20
91	414419	Oil Seal 16 * 22 * .03
95	414850	Spring Pin 3.0a*16
96	414420	Roll Pin 3.5 * 40
115	415928	Switch 6440-11 Delta
116	415929	Switch Bracket
117	415930	Tapping Screw 8 * 20

**NOTE:** All component dimensions given in U.S. inches  
1 inch = 25.4 mm

# REPAIR PARTS

TRACTOR- -MODEL NO. 917.253692

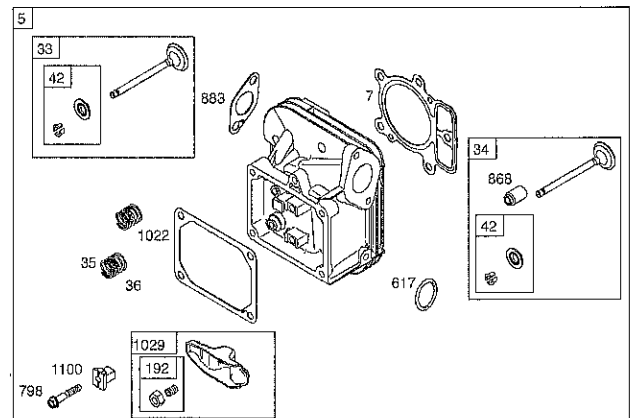
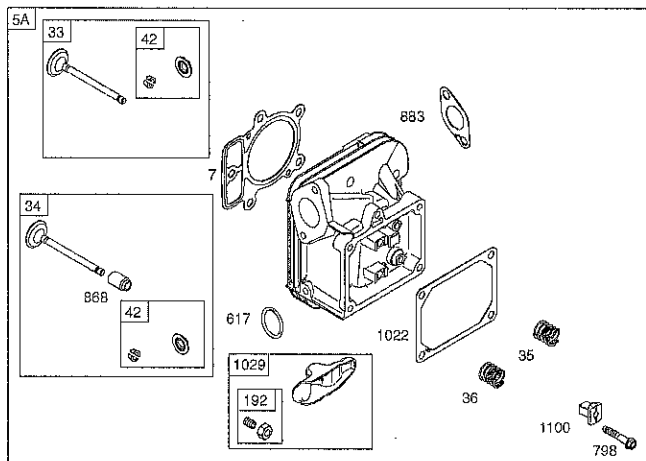
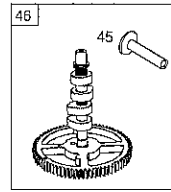
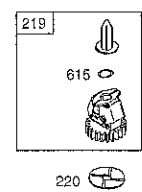
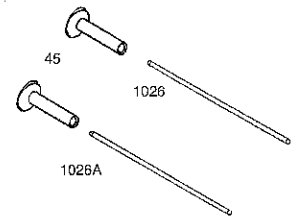
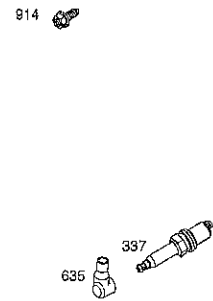
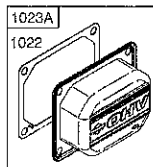
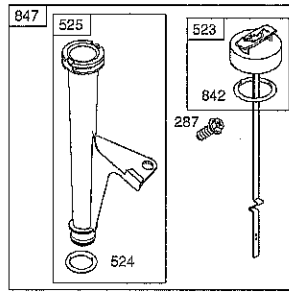
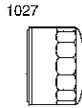
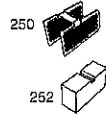
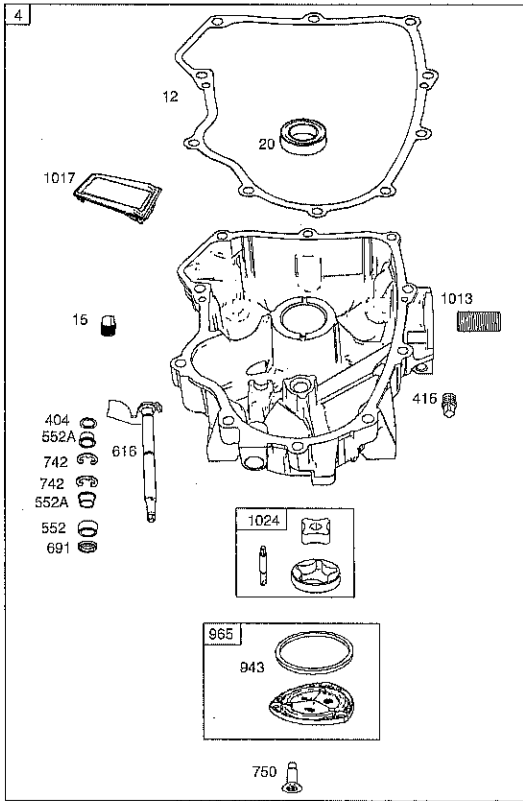
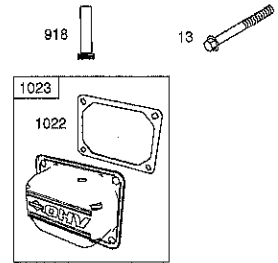
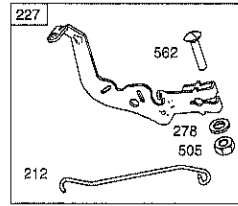
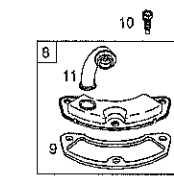
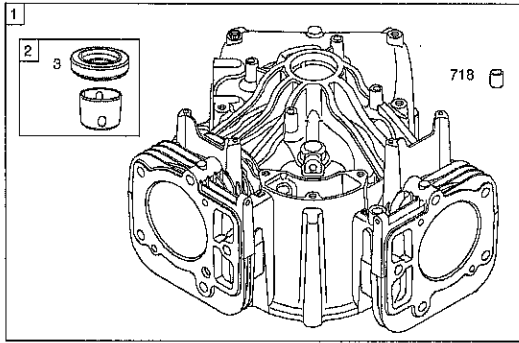
BRIGGS & STRATTON ENGINE - - MODEL NUMBER 445677, TYPE NUMBER 2344-B1

48 SHORT BLOCK

1058 OPERATOR'S MANUAL

1329 REPLACEMENT ENGINE

1330 REPAIR MANUAL

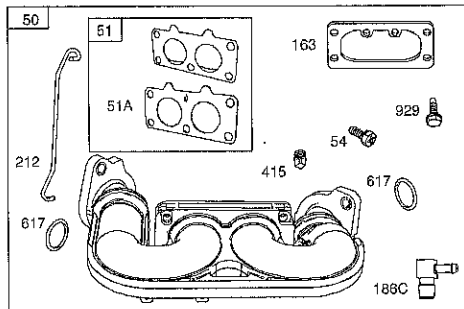
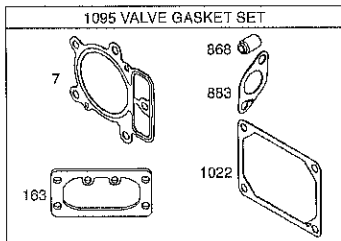
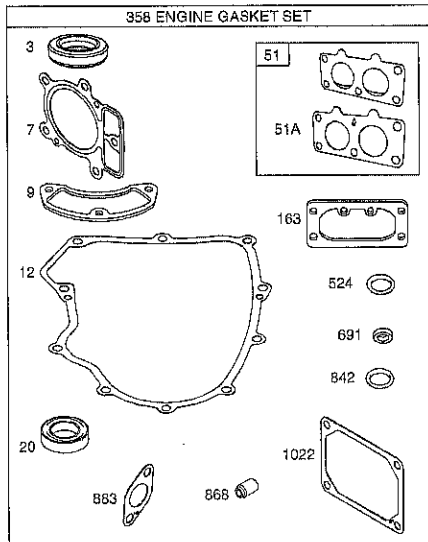
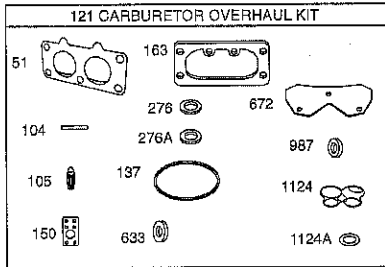


# REPAIR PARTS

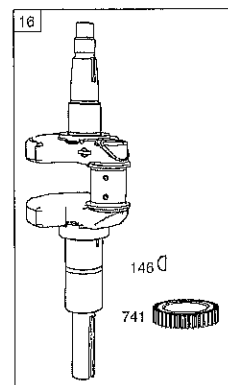
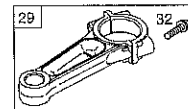
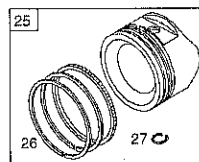
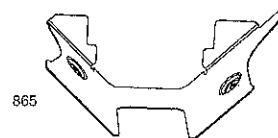
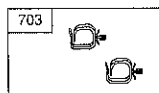
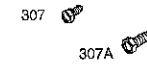
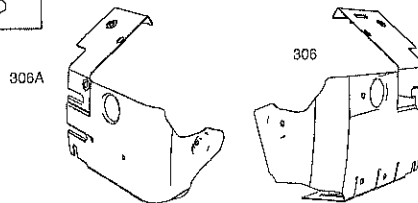
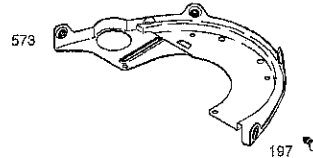
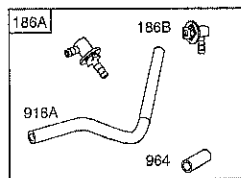
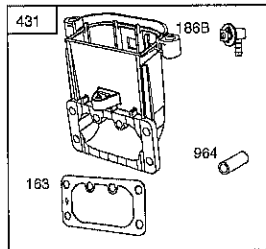
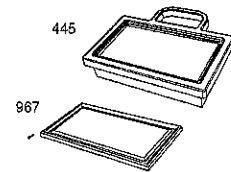
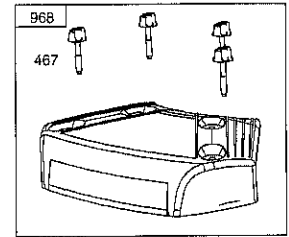
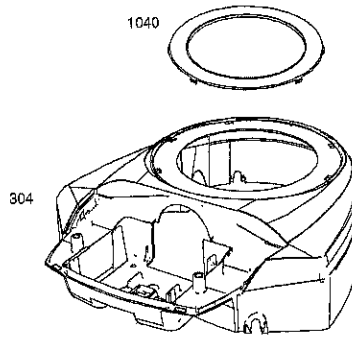
TRACTOR- -MODEL NO. 917.253692

BRIGGS & STRATTON ENGINE - - MODEL NUMBER 445677, TYPE NUMBER 2344-B1

1036 EMISSIONS LABEL



1040

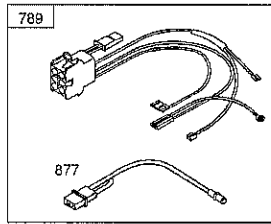
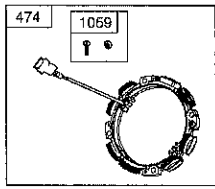


24

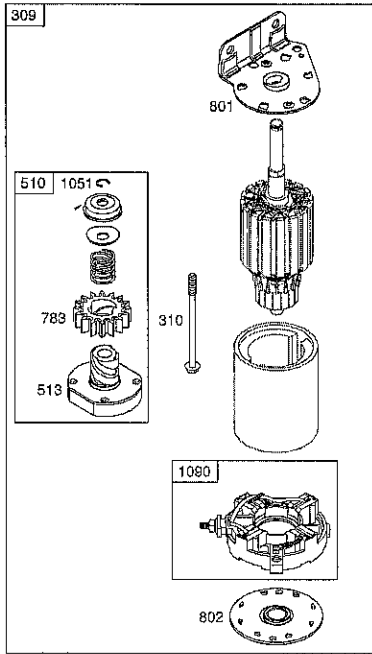
# REPAIR PARTS

TRACTOR- -MODEL NO. 917.253692

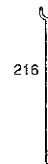
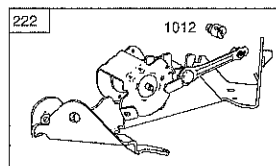
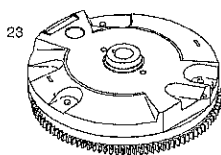
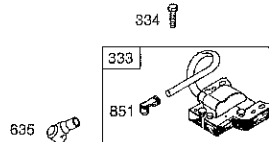
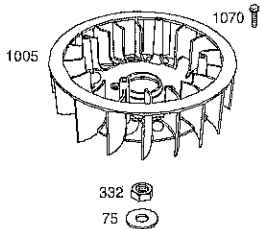
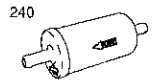
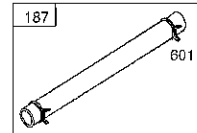
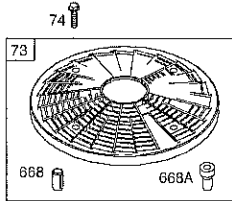
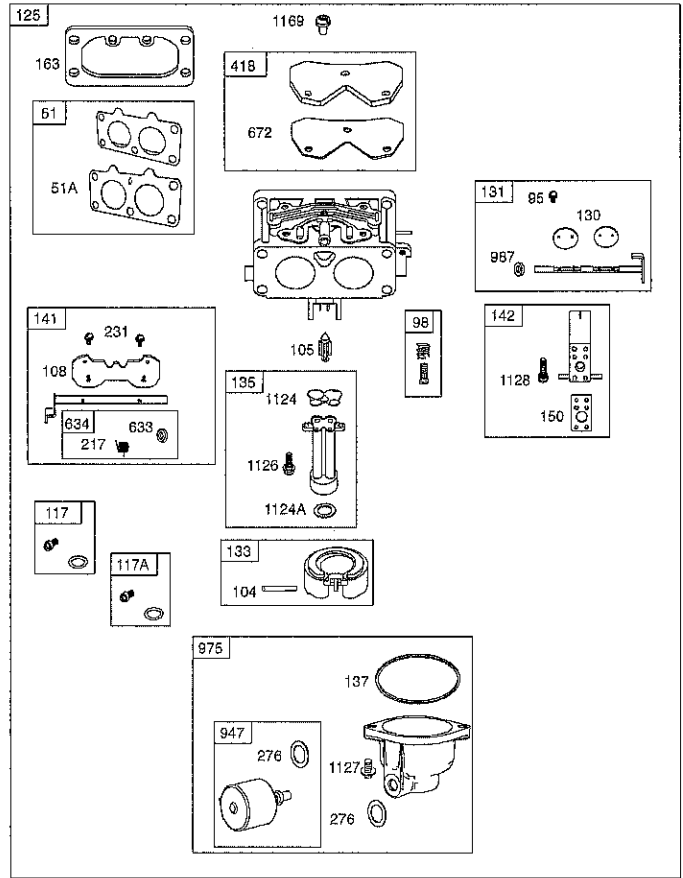
BRIGGS & STRATTON ENGINE - - MODEL NUMBER 445677, TYPE NUMBER 2344-B1



1119



697



188

265

267

209

211



# REPAIR PARTS

## TRACTOR- -MODEL NO. 917.253692

### BRIGGS & STRATTON ENGINE - - MODEL NUMBER 445677, TYPE NUMBER 2344-B1

KEY NO.	PART NO.	DESCRIPTION	KEY NO.	PART NO.	DESCRIPTION
1	793564	Cylinder Assembly	118A	843099	Jet-Main (High Altitude) (Right Jet)
2	797673	Bushing/Seal Kit (Magneto Side)	121	797890	Kit-Carburetor Overhaul
3	391086s	Seal-Oil (Magneto Side)	125	796258	Carburetor
4	796307	Sump-Engine	130	690993	Valve-Throttle
5	796231	Head-Cylinder (Cylinder 1)	131	499805	Kit-Throttle Shaft
5A	796232	Head-Cylinder (Cylinder 2)	133	699724	Float-Carburetor
7	693997	Gasket-Cylinder Head	135	699729	Tube-Fuel Transfer
8	792185	Breather Assembly	137	690994	Gasket-Float Bowl
9	690937	Gasket-Breather	141	796228	Kit-Choke Shaft
10	697551	Screw (Breather Assembly)	142	699726	Nozzle-Carburetor
11	792184	Tube-Breather	146	690979	Key-Timing
12	697227	Gasket-Crankcase	150	690995	Gasket-Nozzle
13	793988	Screw (Cylinder Head)	163	691001	Gasket-Air Cleaner
15	690946	Plug-Oil Drain	186A	799158	Hose-Connector (EVAP System)
16	796237	Crankshaft	186B	845141	Hose-Connector (EVAP System)
20	795387	Seal-Oil (PTO Side)	186C	795985	Hose-Connector (Intake Manifold)
22	694966	Screw (Crankcase Cover Sump)	187	791766	Line-Fuel (Cut to Required Length)
23	691054	Flywheel	188	697551	Screw (Control Bracket)
24	222698s	Key-Flywheel	192	690083	Adjuster-Rocker Arm
25	792023	Piston Assembly (Standard)	197	697820	Screw (Back Plate)
	792072	Piston Assembly (020" Ovesize)	209	799169	Spring-Governor (Dark Blue)
26	792026	Ring Set (Standard)	211	691019	Spring-Governed Idle (No Color)
	792073	Ring Set (.020" Oversize)	212	695238	Link-Throttle
27	690975	Lock-Piston Pin	216	796229	Link-Choke
28	696581	Pin-Piston	217	695409	Spring-Choke Return
29	796209	Rod-Connecting	219	793338	Gear-Governor
32	690976	Screw (Connecting Rod)	220	690412	Washer (Governor Gear)
33	697576	Valve-Exhaust	221	841026	Cup-Governor
34	792200	Valve-Intake	222	798915	Bracket-Control
35	694865	Spring-Valve (Intake)	227	798856	Lever-Governor Control
36	694865	Spring-Valve (Exhaust)	231	690718	Screw (Choke Valve)
42	499586	Keeper-Valve	240	691035	Filter-Fuel
45	690977	Tappet-Valve	250	690957	Retainer-Breather
46	792555	Camshaft	252	794389	Collector-Oil
48	698172	Short Block	265	691024	Clamp-Casing
50	695241	Manifold-Intake	267	792629	Screw (Casing Clamp)
51	795123	Gasket-Intake	276	695410	Washer-Sealing
51A	690950	Gasket-Intake	278	792651	Washer (Governor Control Lever)
53	690951	Stud (Carburetor)	287	697551	Screw (Dipstick Tube)
54	699816	Screw (Intake Manifold)	304	797406	Housing-Blower
73	494439	Screen-Rotating	305	691005	Screw (Blower Housing) (1/4-20x.68)
74	698425	Screw (Rotating Screen)			
75	691056	Washer (Flywheel)	305B	790690	Screw (Blower Housing to Intake Elbow) (#10-16x.62)
95	690718	Screw (Throttle Valve)			
98	699721	Kit-Idle Speed	306	798855	Shield-Cylinder (Cylinder 2)
104	694918	Pin-Float Hinge	306A	796852	Shield-Cylinder(Cylinder 1)
105	797410	Valve-Float Needle	307	691003	Screw(CylinderShield) (10-24x.43)
108	699723	Valve-Choke	307A	697551	Screw (Cylinder Shield) (1/4-20x.66)
117	791501	Jet-Main (Standard) (Left Jet)			
117A	791502	Jet-Main (Standard) (Right Jet)	309	497595	Motor-Starter
118	695415	Jet-Main (High Altitude) (Left Jet)	310	690323	Screw (Starter Motor)

# REPAIR PARTS

## TRACTOR- -MODEL NO. 917.253692

### BRIGGS & STRATTON ENGINE - - MODEL NUMBER 445677, TYPE NUMBER 2344-B1

KEY NO.	PART NO.	DESCRIPTION	KEY NO.	PART NO.	DESCRIPTION
332	691059	Nut (Flywheel)	742	690328	Retainer-E Ring
333	691060	Armature-Magneto	750	796208	Screw (Oil Pump Cover)
334	691061	Screw (Magneto Armature)	783	695708	Gear-Pinion
337	691043	Plug-Spark	789	698330	Harness-Wiring
358	694012	Gasket Set-Engine	798	697890	Screw (Rocker Arm)
385	797409	Screw (Fuel Pump)	801	691283	Cap-Drive
387	808656	Pump-Fuel	802	691286	Cap-End
404	690442	Washer (Governor Crank)	842	691031	Seal-O Ring (Dipstick)
415	794903	Plug	847	499602	Dipstick/Tube Assembly
418	795912	Plate-Carburetor	850	100106	Sealant-Liquid
431	798859	Elbow-Intake	851	493880s	Terminal-Spark Plug
445	499486	Filter-Air Cleaner Cartridge	865A	691015	Cover-Air Guide (Valley)
467	691008	Knob-Air Cleaner	868	690968	Seal-Valve
474	696459	Alternator	877	790544	Wire/Connector-Alternator
505	691029	Nut (Governor Control Lever)	883	690970	Gasket-Exhaust
510	696541	Drive-Starter	914	691127	Screw (Rocker Cover)
513	692024	Clutch-Drive	918	797408	Hose-Vacuum
523	691036	Dipstick	918A	799160	Hose-Vacuum (EVAP System)
524	691032	Seal-Dipstick Tube	943	796222	Seal-O Ring (Oil Pump Cover)
525	691037	Tube-Dipstick	947	798779	Solenoid-Fuel
552	796638	Bushing-Governor Crank	964	799159	Cap-Connector
552A	690553	Bushing-Governor Crank	965	796221	Cover-Oil Pump
562	690311	Screw (Governor Control Lever)	967	273638s	Filter-Pre Cleaner
573	790444	Plate-Back	968	791242	Cover-Air Cleaner
601	691038	Hose-Clamp (Black)	975	798778	Bowl-Fuel
615	698290	Retainer-Governor Shaft	987	691000	Seal-Throttle Shaft
616	691045	Crank-Governor	1005	791236	Fan-Flywheel
617	697891	Seal-O Ring (Intake Manifold) (Red)	1012	797926	Retainer-Link
633	699813	Seal-Choke/Throttle Shaft (Choke Shaft)	1013	690954	Nipple-Oil Filter
634	698779	Spring/Seal Assembly	1017	796214	Screen-Oil Pump
635	66538s	Boot-Spark Plug	1022	690971	Gasket-Rocker Cover
654	690958	Nut (Carburetor)	1023	793146	Cover-Rocker (Cylinder 1)
668	691215	Spacer (Rotating Screen)	1023A	499600	Cover-Rocker (Cylinder 2)
668A	691500	Spacer (Rotating Screen)	1024	796220	Pump-Oil
672	690234	Gasket-Carburetor Plate	1026	690981	Rod-Push (Steel) (Exhaust)
691	790574	Seal-Governor Shaft	1026A	690982	Rod-Push (Aluminum) (Intake)
697	690372	Screw (Drive Cap)	1027	492932s	Filter-Oil
703	691010	Clip	1029	690972	Arm-Rocker
718	690959	Pin-Locating	1036		Label-Emissions (Available from a Briggs & Stratton Authorized Dealer)
741	690980	Gear-Timing	1040	791237	Plate-Trim

# REPAIR PARTS

TRACTOR- -MODEL NO. 917.253692

BRIGGS & STRATTON ENGINE - - MODEL NUMBER 445677, TYPE NUMBER 2344-B1

KEY NO.	PART NO.	DESCRIPTION
1051	691265	Ring-Retaining
1054	280275	Tie-Cable
1058	278776TRI	Operator's Manual
1059	698516	Kit-Screw/Washer
1070	791680	Screw (Flywheel Fan)
1090	691293	Retainer-Brush
1095	694013	Gasket Set-Valve
1100	791959	Pivot-Rocker Arm
1119	691183	Screw (Alternator)
1124	690988	Seal-O Ring (Fuel Transfer Tube)
1124A	841653	Seal-O Ring (Fuel Transfer Tube)
1126	690991	Screw (Fuel Transfer Tube)
1127	695407	Screw (Float Bowl)
1128	690990	Screw (Carburetor Nozzle)
1169	690990	Screw (Carburetor Cover Plate)
1329	44Q777 -3137-G5	Replacement Engine
1330	273521	Repair Manual

Engine Gasket Set	Key No. 358
Valve Gasket Set	Key No. 1095
Carburetor Overhaul Kit	Key No. 121

**NOTE:** All component dimensions given in U.S. inches  
1 inch = 25.4 mm

### **LIMITED WARRANTY ON CRAFTSMAN RIDING EQUIPMENT**

For two (2) years from the date of purchase, if this Craftsman Riding Equipment is maintained, lubricated and tuned up according to the instructions in the owner's manual, Sears will repair or replace free of charge any parts that are found to be defective in material or workmanship according to the guidelines of coverage listed below. Sears will also provide free labor for these applicable warranted parts for the two full years. During the first 30 days of purchase, there will be no charges to service the product at your home for issues covered by this warranty. (See exclusions below). For your convenience, IN HOME warranty service will still be available after the first 30 days of purchase, but a trip charge will apply. This charge will be waived if the Craftsman product is dropped off at an authorized Sears location. For the nearest authorized Sears location, please call 1-800-4-MY-HOME®. This warranty applies only while this product is within the United States.

This Warranty does not cover:

- Expendable items which become worn during normal use, including but not limited to blades, spark plugs, air cleaners, belts, and oil filters.
- Standard Maintenance Servicing, oil changes, or tune-ups
- Tire replacement or repair caused by punctures from outside objects, such as nails, thorns, stumps, or glass.
- Repairs necessary because of operator abuse, including but not limited to, damage caused by towing objects beyond the capability of the riding equipment, impacting objects that bend the frame or crankshaft, or over-speeding the engine.
- Repairs necessary because of operator negligence, including but not limited to, electrical and mechanical damage caused by improper storage, failure to use the proper grade and amount of engine oil, failure to keep the deck clear of flammable debris, or failure to maintain the equipment according to the instructions contained in the owner's manual.
- Engine (fuel system) cleaning or repairs caused by fuel determined to be contaminated or oxidized (stale). In general, fuel should be used within 30 days of its purchase date.
- Normal deterioration and wear of the exterior finishes, or product label replacement.
- Riding equipment used for commercial or rental purposes.

### **LIMITED WARRANTY ON BATTERY**

For ninety (90) days from date of purchase, if any battery included with this riding equipment proves defective in material or workmanship and our testing determines the battery will not hold a charge, Sears will replace the battery at no charge. During the first 30 days of purchase, there will be no charges to replace the battery at your HOME. After the first 30 days, for your convenience, IN-HOME warranty service will still be available but a trip charge will apply. This charge will be waived if the Craftsman product is dropped off at an authorized Sears location. For the nearest authorized Sears location, please call 1-800-4-MY-HOME®.

This battery warranty applies only while this product is within the United States.

This warranty gives you specific legal rights, and you may also have other rights, which vary, from state to state.

Sears, Roebuck and Co., Dept. 817WA, Hoffman Estates, IL 60179

